

PAYMENTS

User Guide

P630 PIN Pad Launcher Application User Guide

A smart PIN Pad that puts convenience and security
at your fingertips.



 globalpayments

Table of contents

Launcher Application	3
Device Operating Modes	3
Standard Android Mode	3
Lock Task Mode	3
Home Screen	4
Downloading the Launcher App	4
User Actions	4
Installation of the Launcher App from Fresh Install	5
User Actions	5
Setting the Launcher App as Default Home App via Settings	7
User Actions	7
Disabling the Launcher App	8
Removing the Launcher App as the Default Home screen via Settings	9
User Actions	9
Change Lock Task Mode to Standard Mode - also removes Launcher	10
Service and support	12
Returning a terminal for service	12

Launcher Application

The **Launcher Application** is a secure, restricted environment designed to function as the default home screen on a device – ensuring uninterrupted access to your payments screen. Also, in this mode, only approved applications can be accessed, ensuring that users interact solely with the intended functions of the device.

Device Operating Modes

The Device Operating Modes are managed to ensure seamless operation of the software in merchant transactions.

Standard Android Mode

This is the default mode. In this mode, the device is capable of running payment applications but isn't restricted to any specific primary function. For instance, it can boot to the standard Android home screen or launcher and freely run any application:

- The device boots into the standard home or launcher application.
- The user decides which applications to launch and when.



Lock Task Mode

Lock Task Mode

This mode is ideal for merchants who require a multi-lane terminal setup where customers are strictly prevented from accessing other applications, settings, or system functions. This mode is also suited for scenarios where the device is used in tabletop mode and connected to an external ECR or POS system that closely resembles the functionality and usage of a traditional retail terminal.

Lock Task Mode offers these benefits:

- **Only payment-related applications are accessible.** This eliminates unnecessary features, or access to them.
- **Prevents unauthorized access to system settings, notifications, and external apps.** Users cannot exit the Lock Task Mode, preventing access to Android settings or third-party applications.
- **Security risks are minimized.** This reduces the likelihood of accidental tampering, malware installation, or unauthorized system changes.
- **Operational consistency.** Devices in different locations can function uniformly, following the same security and usability protocols.

Home Screen

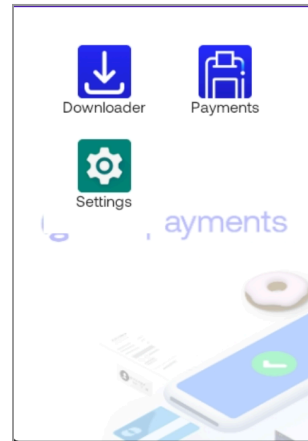
The **Launcher Home Screen** appears below:

The **Launcher app** must contain these supported applications:

- Downloader (UDS)
- Payments (UPA)

These buttons are disabled:

- Recent Apps
- Home Screen



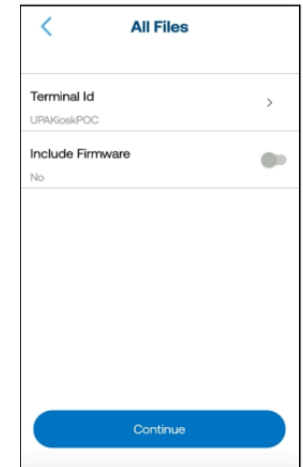
2. Set the **TERMINAL ID** for the Launcher app to download then tap **Continue**.

Example:

TERMINAL ID: GRTCLPS6

Toggle Firmware to **Yes**, if firmware is not on **5.8.2** and above

To check: Go to settings > on the search bar, enter build and search, check the terminal build.

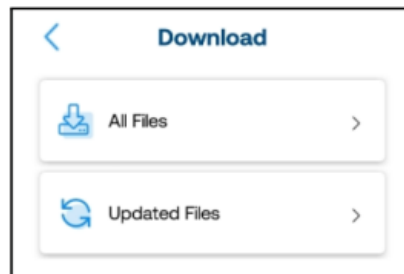


Downloading the Launcher App

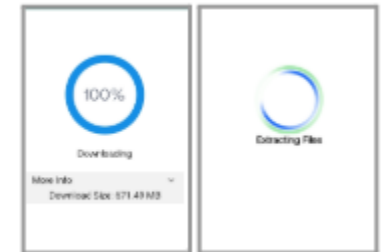
Programming to add the Launcher APP ID - CAP63Launch to the terminal ID

User Actions

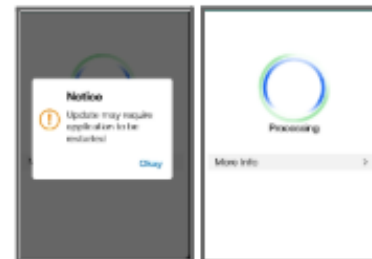
1. Open the Downloader
Select **All Files**



3. Download and install the **Launcher** application. After installation, tap **Okay**.



These following screens also appear:

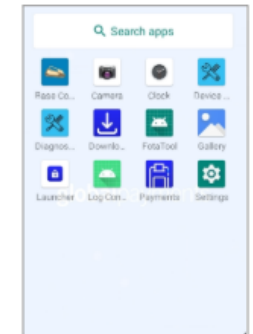


Installation of the Launcher App from Fresh Install

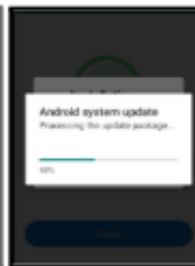
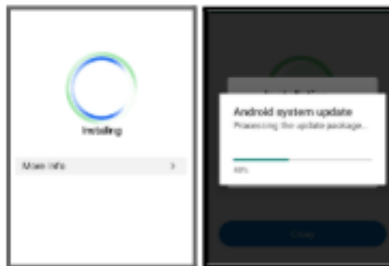
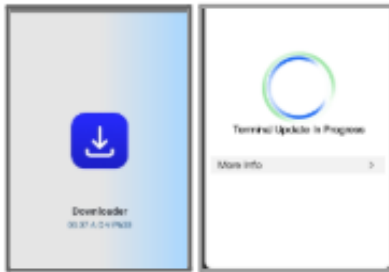
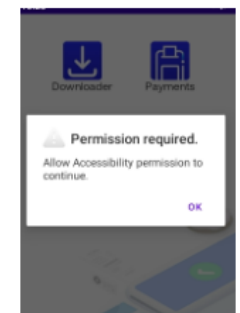
User Actions

The instructions below show the steps in installing the Launcher application on a P630 terminal with accessibility permissions.

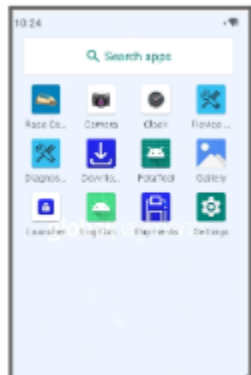
1. Open the **Launcher app** via the **App drawer**.



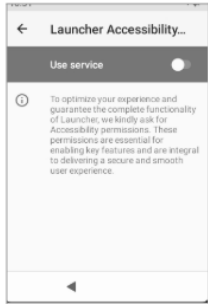
2. On **Permission required** prompt, tap **OK** to proceed.



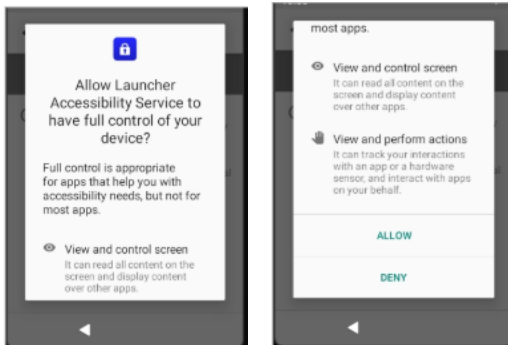
4. After the restart, open the **Launcher app** via the **App drawer**.



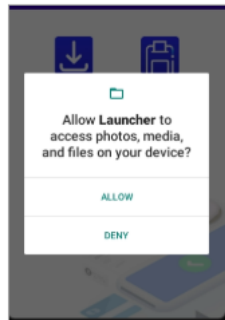
- On the **Accessibility** screen, turn on the **Launcher Accessibility Service**



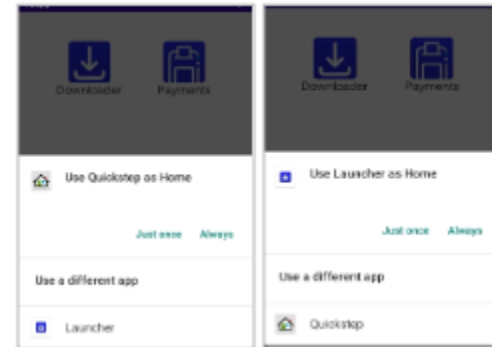
- On the confirmation window, scroll down and tap **ALLOW**. The window will automatically close.



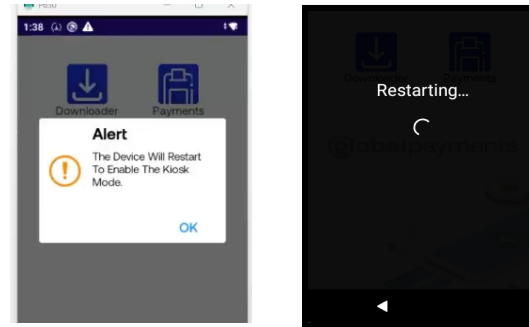
- On the confirmation prompt that will appear, tap **ALLOW**.



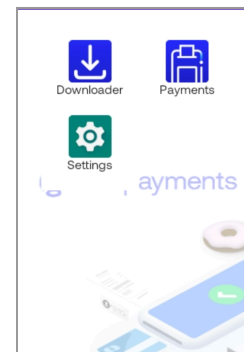
- On the prompt, select **Launcher App** as Home and Tap **Always**.



- On the **Alert** prompt, tap **OK**. The device will restart.



- After the restart, the **Launcher app** should be displayed and available. The navigation and status bar should be disabled. Select **Payments** to be directed to the payment screen



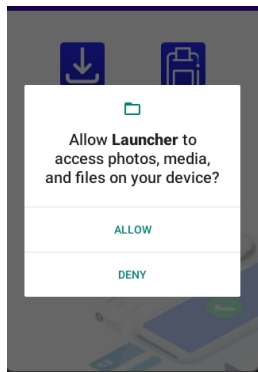
Setting the Launcher App as Default Home App via Settings

User Actions

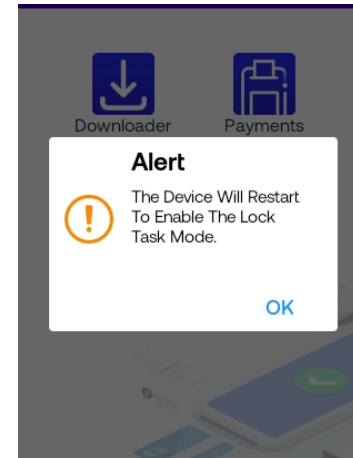
1. On your device, go to **Settings > Apps & notifications > Default apps**. Tap on **Home app**. Select **Launcher**.



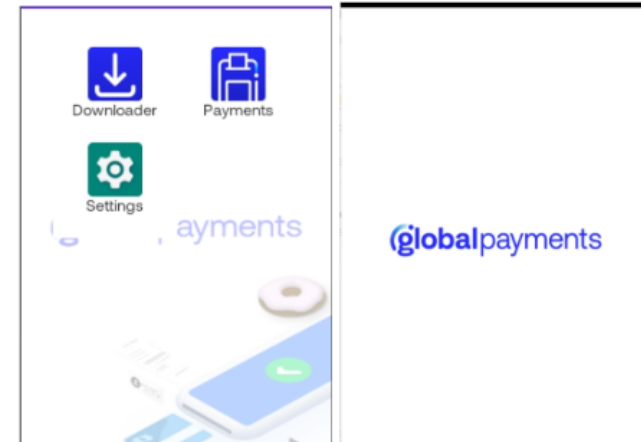
2. Tap **ALLOW**.



3. On the **Alert** dialog box, tap **OK**.



4. After the Restart, the Launcher should be successfully set as the default Home app. Select **Payments**



Disabling the Launcher App

To disable the launcher, you would need to exit from the payment app screen. This section describes different ways to minimize UPA. This information is needed because the Home button, soft buttons, and navigation bar are disabled in Lock Task Mode.

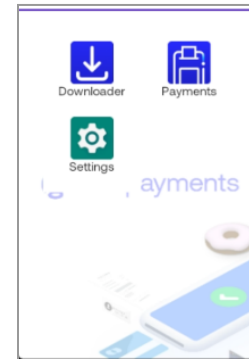
Minimizing UPA

SI External

1. On the UPA idle screen, perform the gesture to minimize the UPA. Up, Right, Down, Left, Left, Down, Right, Up.



2. After performing the correct gesture to minimize the UPA, you will be redirected to the **Launcher** screen.



NOTE:

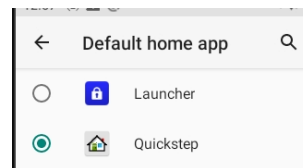
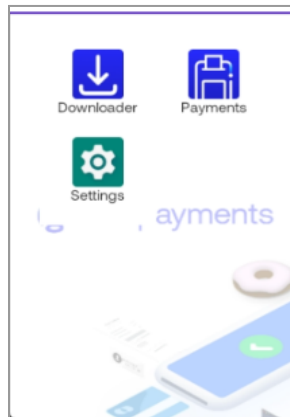
If the Launcher is not installed, or not set as the default launcher, performing the Minimize gesture will redirect you to the default Android Home screen.

Removing the Launcher App as the Default Home screen via Settings

User Actions

Follow the instructions below.

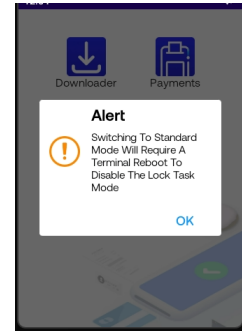
1. You can change the Devices' Lock Task mode to Standard mode via Setting using the steps below, but first use **minimize UPA** gesture to exit from the payment app screen. On the launcher home screen, select **Settings**.
2. On the **Settings** page, select **Apps & notifications > Default apps > Home app**. Select your terminal's default Home App.
3. On the **Settings** page, select **Apps & notifications > Default apps > Home app**. Select your terminal's default Home App.



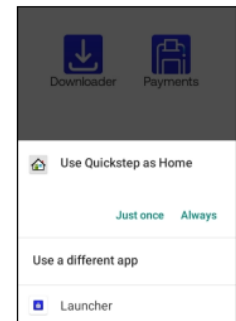
NOTE:

In this example, the terminal's default Home App is Quickstep.

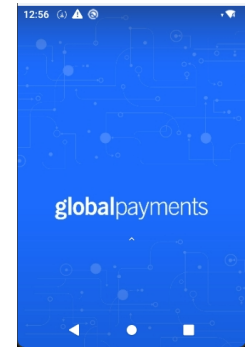
4. After selecting the Terminal's default Home App, a prompt to restart the terminal will appear. Tap **OK** to proceed.



5. On the P630 device, select the terminal's default Home App again after the restart. To apply the changes, tap **Always**.



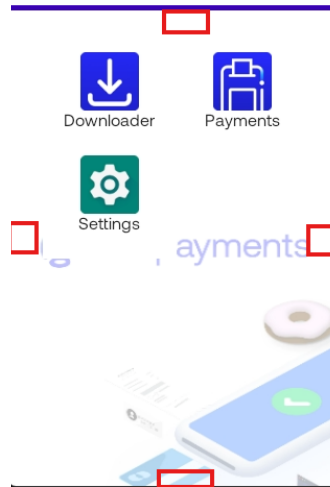
6. After the restart, the device Home app is now the terminal's default Home app and the navigation and status bar are now enabled.



Change Lock Task Mode to Standard Mode – also removes Launcher

The instructions below show the procedure to change from Lock Task mode to Standard Mode from the Launcher page.

1. To remove the **Launcher Application** as the default home screen, you must change the **Device Operating Mode** to **Standard Android Mode** first. To change the **Device Operating Mode** to **Standard Android Mode**, perform a gesture detection function on your Launcher Home screen.



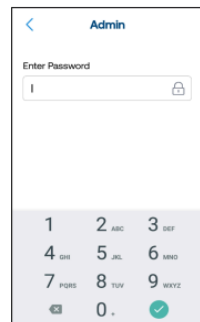
2. Perform this secret gesture sequence to change your Device Operating Mode to Standard Mode.

Gesture: Right, Left, Right, Left, Down, Down

Once the right gesture combination has been tapped, the user will proceed to the **Password** screen.

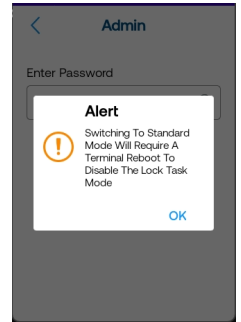
3. In the **Admin Password** screen, provide the correct credentials.

If the correct credentials are provided, the application will display the **Use Launcher or Quickstep as Home** dialog box. Select **Quickstep**.



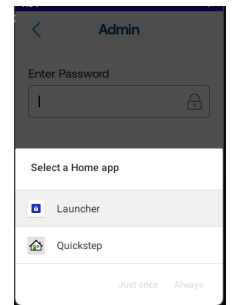
For more information on the Admin Password credentials, see the **Admin Password** section below

4. On the **Alert** dialog box with the message "Switching to Standard Mode will require a Terminal Reboot To Disable the Lock Task mode", tap **OK**.

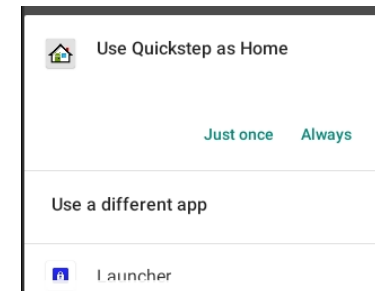


5. On the **Home selector** dialog box, select the terminal's default Home app then tap **ALWAYS**. Here would be the **Quickstep**. The terminal will restart automatically.

NOTE: The terminal will not proceed to restart if the user selects the Launcher again.



6. After the restart, the Home selector dialog box will prompt. Select the terminal's default home app then tap **ALWAYS**. The Terminal's default home screen should be displayed.



Admin Password

Important Notes

After performing the gesture keys to Exit/Disabling the Lock Task Mode of the Launcher app, the application will prompt for an Admin password.

Use this formula to compute the Admin password:

$$\text{Admin Password} = (\text{Julian Day of the Year}) \times 2$$

For example: If today is December 25, 2000

To get the Admin Password:


1. Convert the current calendar date to a Julian Day (Day of the Year). December 25, 2000 is 360 in Julian calendar date.

NOTE:

You can use a calendar, MS Excel, or any online Julian Day converter to find the equivalent Julian calendar date.

2. Multiply the Julian calendar date (360) by 2. The Admin Password for today (December 25, 2000) is 720.

This table shows the Admin Password screen for the **Launcher Application**.

Device	Launcher Application Home Screen
Verifone P630	

NOTE:

No virtual keyboard will be displayed on the **Admin Password** screen. Use the physical keyboard to type the Admin Password.

Service and support

For Global Payments Terminal service and repair information, contact Global Payments' Customer Care at **1.888.682.3309**.

Returning a terminal for service

When you receive a replacement terminal, it is important to promptly return the defective devices. Failure to do so may result in additional charges being applied to your account. If you have any questions regarding terminal returns, the Global Payments' Customer Care Centre is available to assist you.

NOTE:

Under no circumstances should you attempt to service, adjust, or repair the product yourself. Unauthorized service conducted by parties other than authorized Global Payments representatives is strictly prohibited. To ensure proper service, please contact Global Payments' Customer Care at **1.888.682.3309** for assistance.