



Bypass Instructions tado° X

To help us identify the cause of the problem, please follow these instructions to bypass your tado° X device. By rewiring your tado° X device to exclude it from your heating system, you help us to determine if the problem is related to tado°.

How to use the instructions

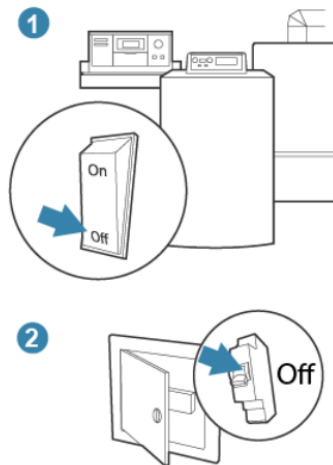
To navigate this document, please avoid scrolling. Instead, use the "Next Page" and "Back" buttons to move through the instructions. This will ensure that you follow the instructions in the intended order.

If you have any trouble following this document, please contact our support team and send them a clear photo of the wiring inside your tado° device.

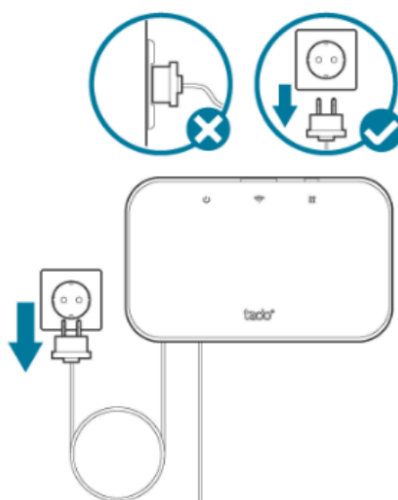
Next Page

Switch off the mains power and unplug the tado° device

Make sure that the power to your heating system is turned off completely. You may need to switch off the circuit breaker and the boiler, like in this example of a generic system with a boiler and circuit breaker switch.



If your tado° device is connected to a power socket, make sure that you unplug it before moving on to the next step.



[Back](#)

[Next Page](#)

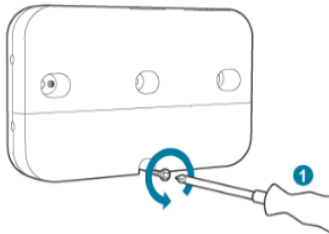
Open your tado° device

tado° Wireless Receiver X

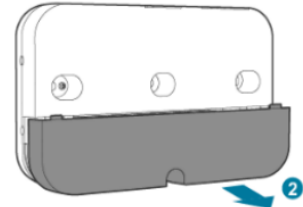
1. Remove the front cover of the Wireless Receiver X.



2. Loosen the fastening screw on the bottom of the terminal cover as shown in the picture below.

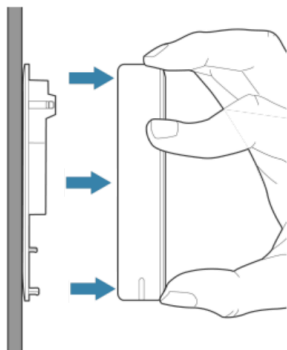


3. Remove the terminal cover to access the connection terminals.

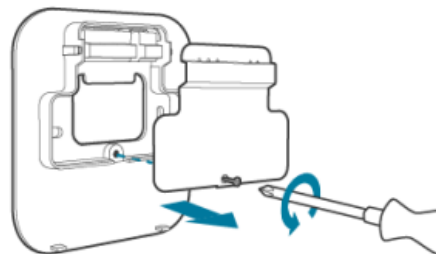


tado° Wired Thermostat X

1. Remove the front cover of the Wired Thermostat X.



2. To open the terminal cover, remove the screw as shown.

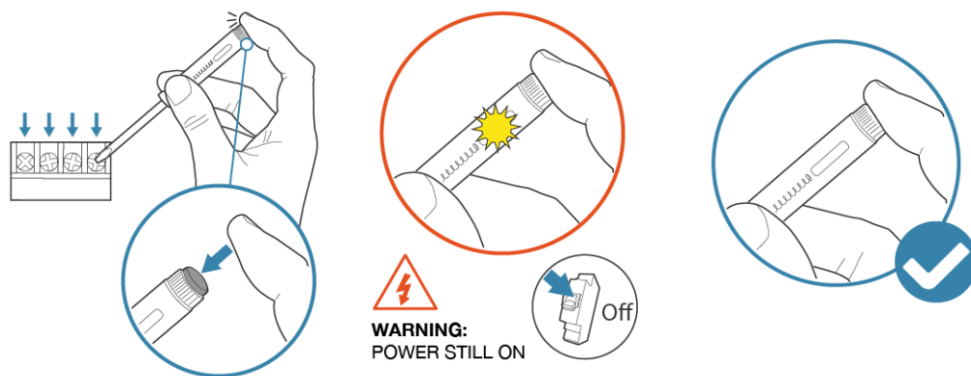


[Back](#)


[Next Page](#)

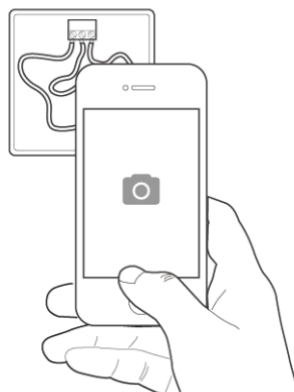
Make sure the power is off and document the wiring of the existing setup

Use the voltage tester to check if there is still power going to any wiring terminal. If the voltage tester lights up at all, there is still power. Before you continue, switch off the circuit breaker. If the voltage tester doesn't light up, then the power is off and it is safe to proceed.



As soon as you have removed the cover of your device please take detailed photos of the existing wiring with the cables still attached. Try to ensure that the terminal numbers are legible.

 You will need these photos to restore the wiring of your existing setup after the test.



[Back](#)

[Next Page](#)

Select the issue of your heating system

tado° Wireless Receiver X (EU version)



- Heating always OFF
- Heating always ON

tado° Wireless Receiver X (UK version)

- Heating always **OFF**
- Heating always **ON**
- Hot water always **OFF**
- Hot water always **ON**

tado° Wired Thermostat X



- Heating always OFF
- Heating always ON

Back

Bypassing the tado° Wireless Receiver X (EU version)

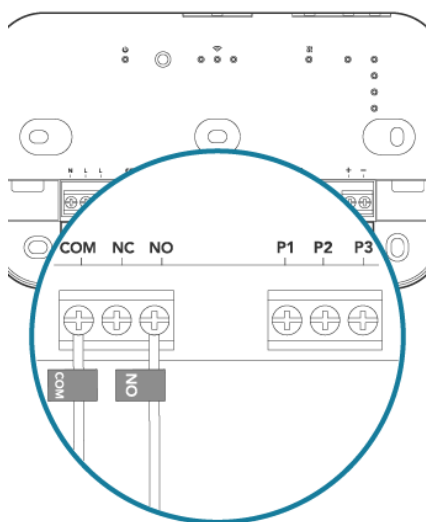
Heating always OFF

Identify the wiring

Look at the wiring on your tado° receiver. Select one of the following options:

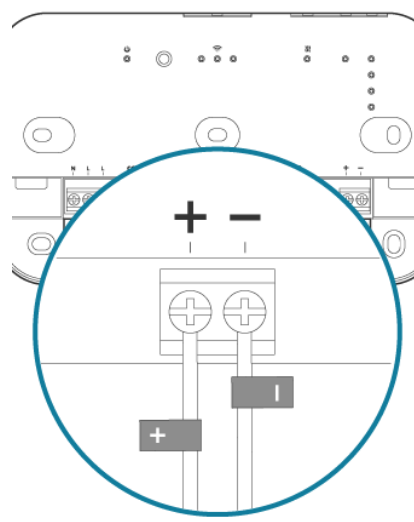
Relay

Cables are connected to terminals **COM** and **NO**.



Opentherm

Cables are connected to terminals **+** and **-**.

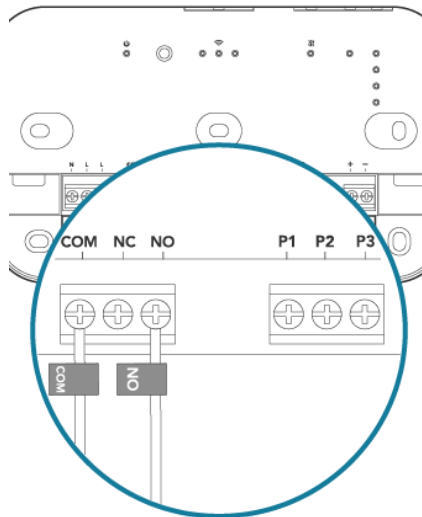


Back

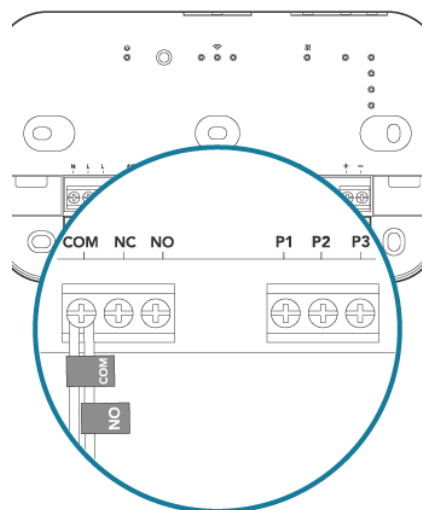
Bypassing the tado° Wireless Receiver X (EU version)

Heating always OFF

Loosen the screw of the terminal labelled **NO**. Leave the remaining wires as they are.



Remove the wire from terminal **NO** and insert it into the terminal labelled **COM** in addition to the wire that is already connected there. Tighten the screw. There should now be **two** wires connected to terminal **COM**.



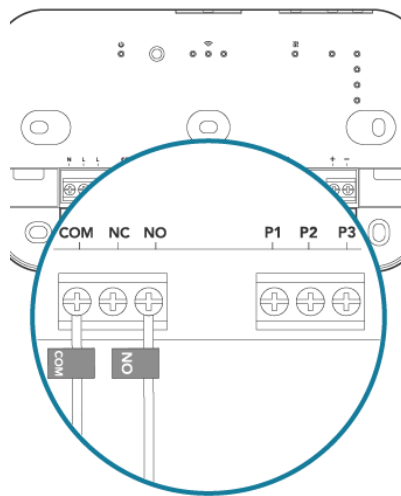
Bypassing the tado° Wireless Receiver X (EU version)

Heating always ON

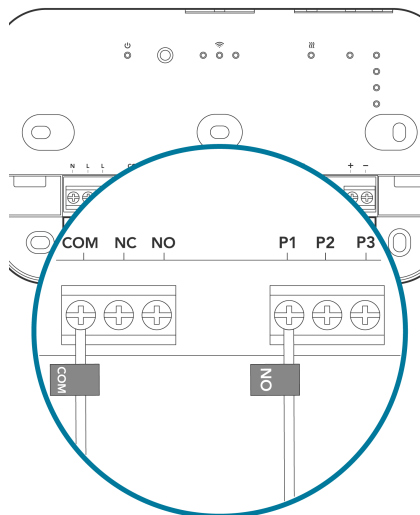


If there are cables connected to terminals **+** and **-** please **don't proceed and contact support**

Loosen the screw of the terminal labelled **NO**. Leave the remaining wires as they are.



Remove the wire from terminal **NO** and insert it into one free parking terminal (**P1**, **P2** or **P3**).



Bypassing the tado° Wireless Receiver X (UK version)

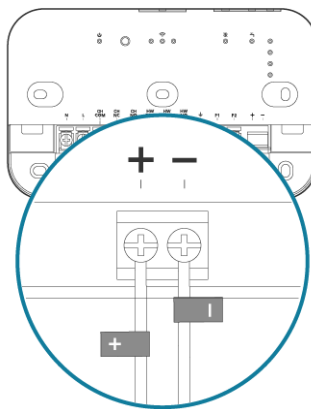
Heating always OFF

Identify the wiring

Look at the wiring on your tado° receiver. Select one of the following options:

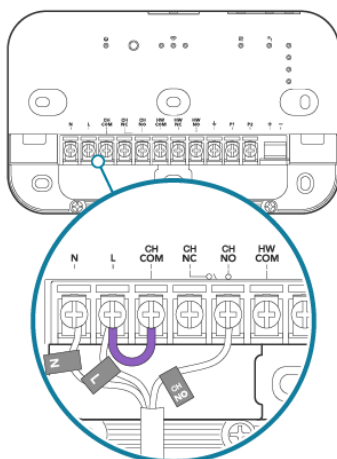
Opentherm

Cables are connected to terminals + and -.



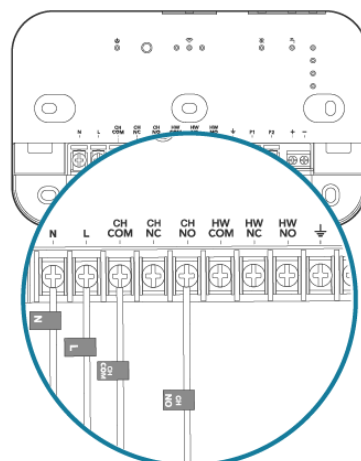
Switched live

A bridge cable is present between terminal **L** and **CH COM**.



Potential free

A bridge cable is **NOT** present between terminal **L** and **CH COM**.

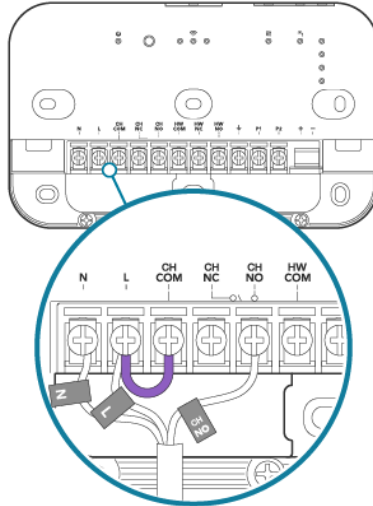


Back

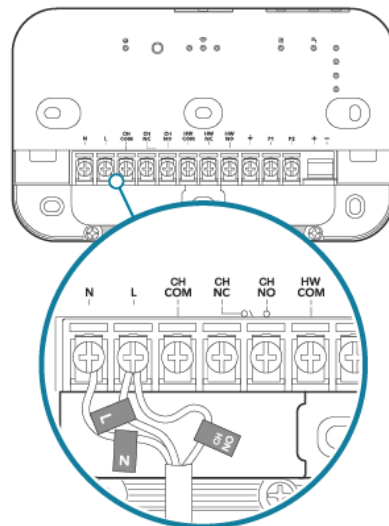
Bypassing the tado° Wireless Receiver X (UK version)

Heating always OFF - Switched live wiring

Loosen the screw of the terminal labelled **CH NO**. Leave the remaining wires as they are.



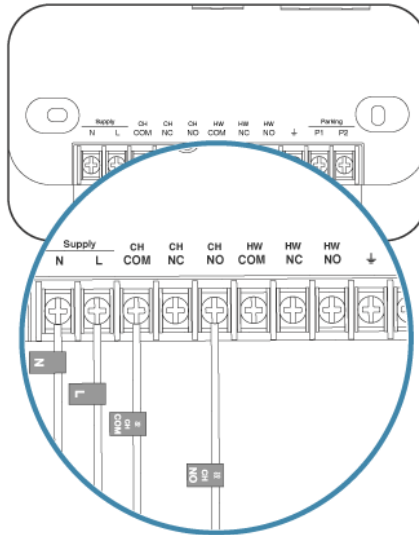
Remove the wire from terminal **CH NO** and insert it into the terminal labelled **L** in addition to the L wire that is already connected there. However, please **remove the purple bridge wire** to allow a better fit for the additional cable. Make sure to keep the bridge safe. Tighten the screw. There should now be **two** wires connected to terminal **L**.



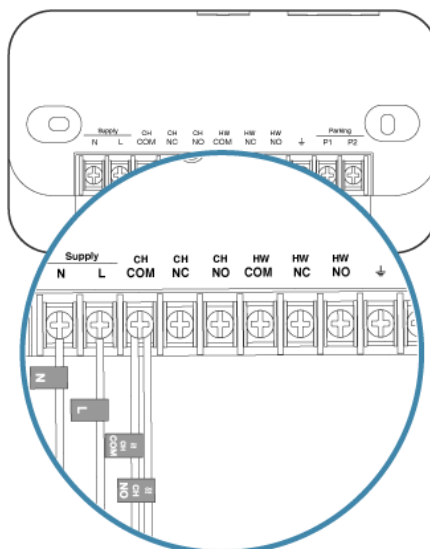
Bypassing the tado° Wireless Receiver (UK version)

Heating always OFF - Potential Free wiring

Loosen the screw of the terminal labelled **CH NO**. Leave the remaining wires as they are.



Remove the wire from terminal **CH NO** and insert it into the terminal labelled **CH COM** in addition to the wire that is already connected there. Tighten the screw. There should now be **two** wires connected to terminal **CH COM**.



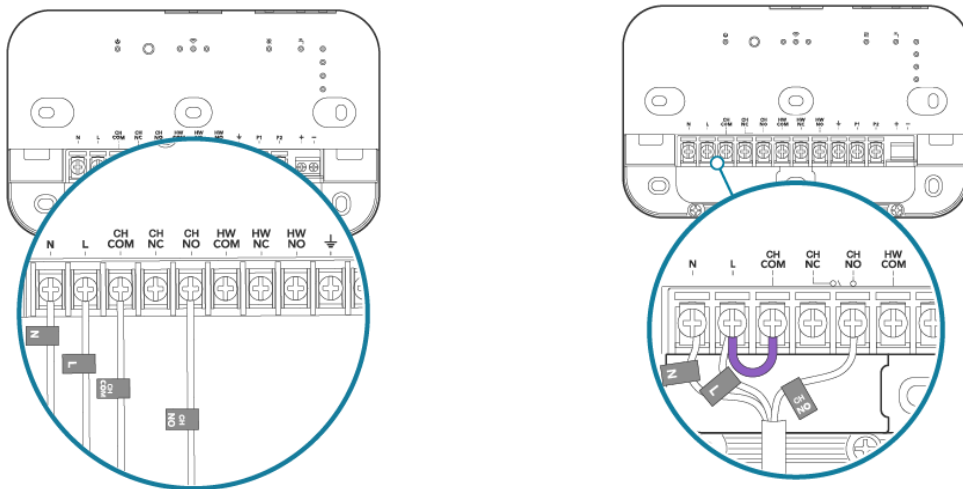
Bypassing the tado° Wireless Receiver X (UK version)

Heating always ON

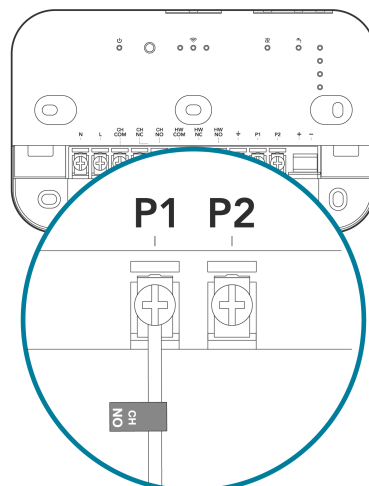


If there are cables connected to terminals **+** and **-** please **don't** proceed and contact support

Loosen the screw of the terminal labelled **CH NO**. Leave the remaining wires as they are. If purple bridges are present, leave them in place. The pictures below are just wiring examples:



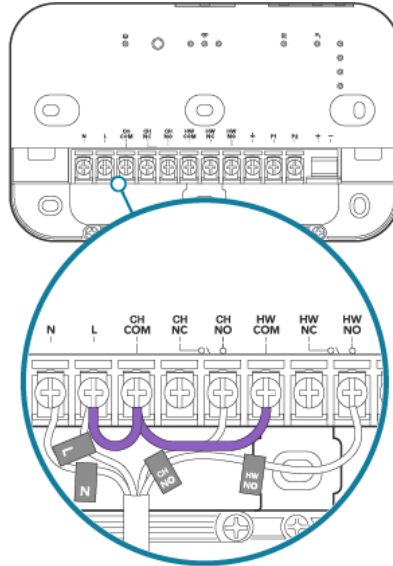
Remove the wire from terminal **CH NO** and insert it into one free parking terminals (**P1** or **P2**).

[Back](#)[Next Page](#)

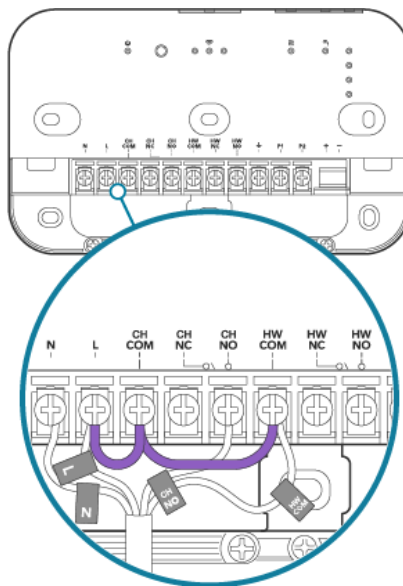
Bypassing the tado° Wireless Receiver X (UK version)

Hot water always OFF

Loosen the screw of the terminal labelled **HW NO**. Leave the remaining wires as they are.



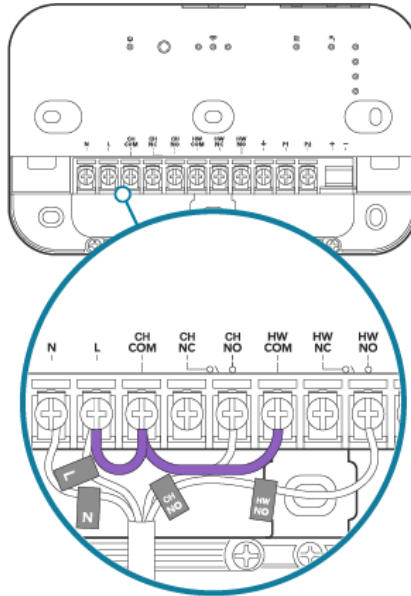
Remove the wire from terminal **HW NO** and insert it into the terminal labelled **HW COM** in addition to the purple bridge wire that is already connected there. Tighten the screw. There should now be **two** wires connected to terminal **HW COM**. Make sure that all wires are firmly connected.

[Back](#)[Next Page](#)

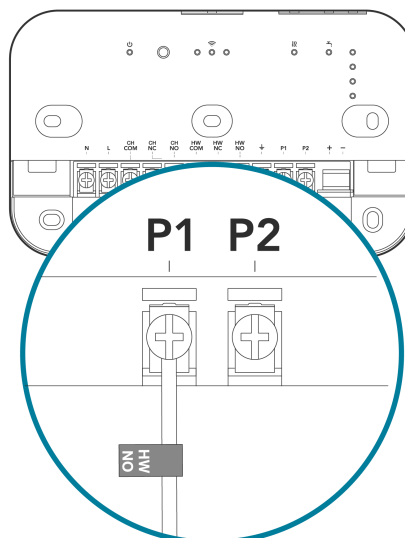
Bypassing the tado° Wireless Receiver X (UK version)

Hot water always ON

Loosen the screw of the terminal labelled **HW NO**. Leave the remaining wires as they are.



Remove the wire from terminal **HW NO** and insert it into one free parking terminals (**P1** or **P2**).



Bypassing the tado° Wired Thermostat X

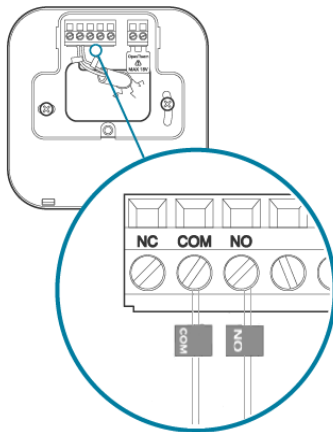
Heating always OFF

Identify the wiring

Look at the wiring on your tado° Thermostat. Select one of the following options:

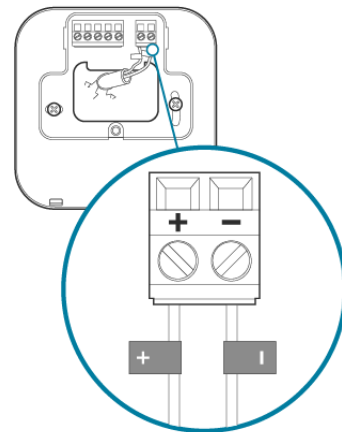
Relay

Cables are connected to terminals **COM** and **NO**.



Opentherm

Cables are connected to terminals **+** and **-**.

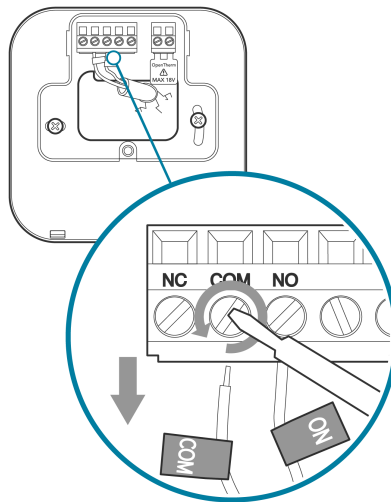


Back

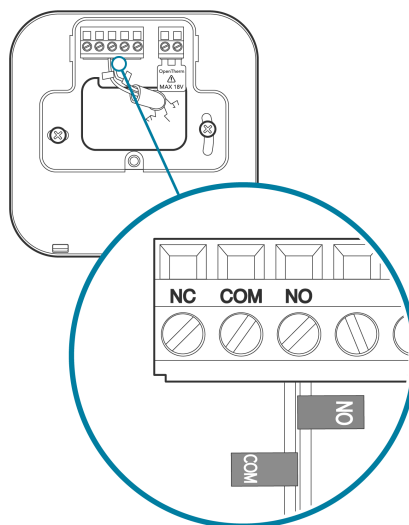
Bypassing the tado° Wired Thermostat X

Heating always OFF

Please loosen the screw of the cable connections. Remove the cable from the screw terminal labelled **COM**.



Insert the cable labelled **COM** into the screw terminal named **NO**. Tighten the screw. There should now be **two** cables connected to screw terminal **NO**. Leave the other wires untouched.



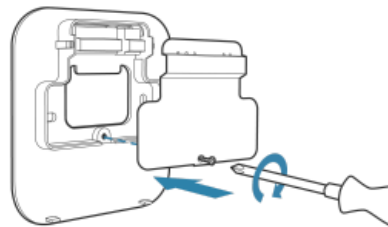
Bypassing the tado° Wired Thermostat X

Heating always ON



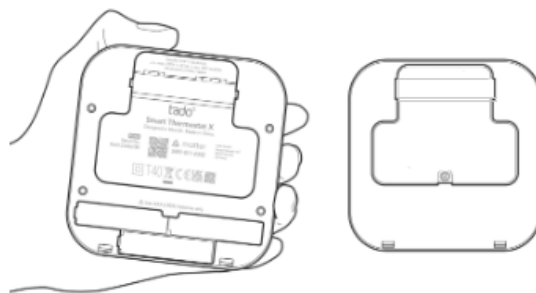
If there are cables connected to terminals + and - please **don't proceed and contact support**

Please check the wiring inside your thermostat to ensure that no wires are touching each other, as this may be causing the heating system to remain on. Then, reattach the **terminal cover** and tighten the security screw, as shown in the image below.



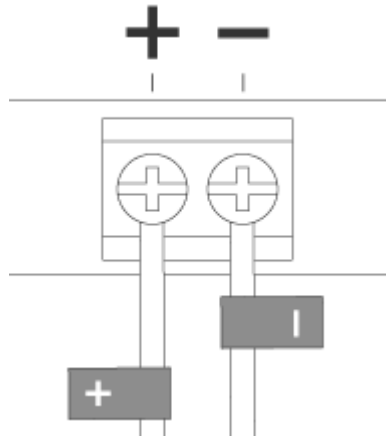
Important note: please **don't reattach the backplate** at this stage.

Removing the backplate of your tado° thermostat disconnects it from your heating system. The steps on the following pages have to be performed while the backplate of the tado° thermostat **remains removed**.

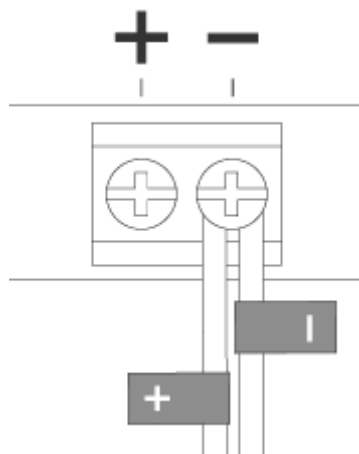
[Back](#)[Next Page](#)

Heating always OFF - Opentherm

Please loosen the screw of the cable connections. Remove the cable from the screw terminal labelled + .



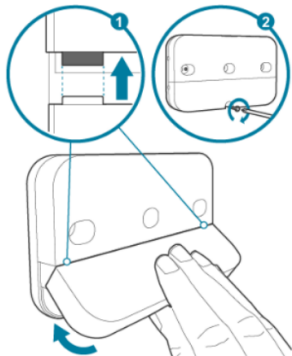
Insert the cable labelled + into the screw terminal named - . Tighten the screw. There should now be **two** cables connected to the screw terminal - . Leave the other wires untouched.



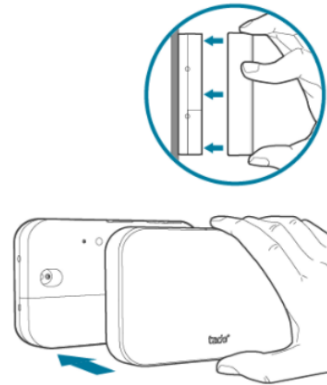
Close your tado° device

tado° Wireless Receiver X

1. Hook the terminal cover into the two notches, as shown in the picture below. Push the bottom down into place. Tighten the screw on the bottom to secure it.

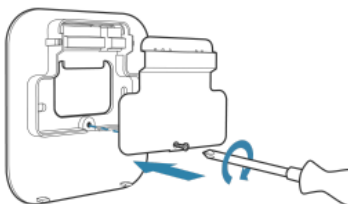


2. Put the front cover on the Wireless Receiver X.

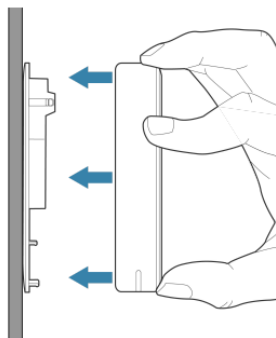


tado° Wired Thermostat X

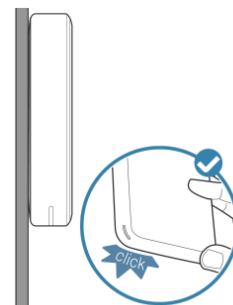
1. Mount the terminal cover and tighten the security screw as shown in the image.



2. Put the device back on its backplate and press it into place.

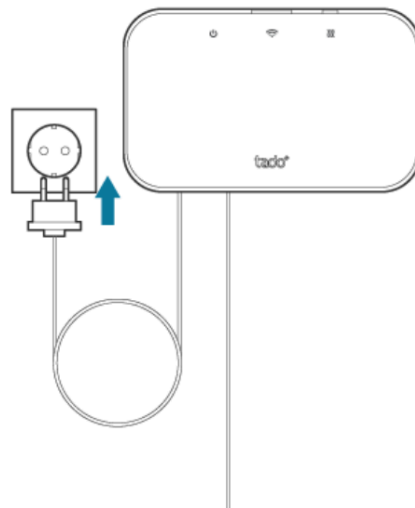


3. Push the lower part of the front cover into place. The locking mechanism produces a “click” when pushed into place.

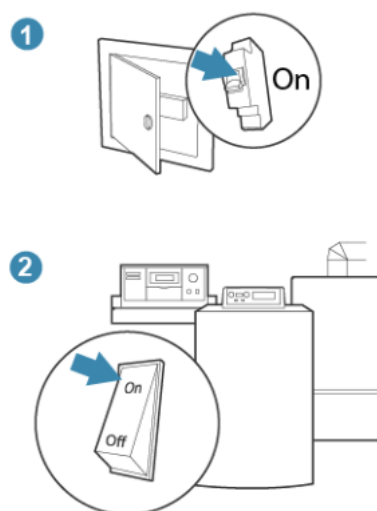


Plug in the tado° device and switch the mains power back on

If your tado° device was connected to a power socket, please connect the power plug to the mains socket to power tado°.



You can now turn the power back on. Please reverse the steps that you took to turn the power to the boiler off.



Back

Next Page

Test the system

The issue is: **Heating or Hot water always OFF:**

After the test the heating/hot water **turned ON**



Please send us **the exact time and date** when you did the test, and **a picture of the wiring inside tado°** to allow us to further investigate and determine if a replacement is necessary.

After the test the heating/hot water **remained OFF**



The problem **is not caused by tado°**, you might have to ask a heating engineer to check your system. If the heating engineer has any questions about tado°, they can find detailed information in our [Manual for Professional Installers](#).

The issue is: **Heating or Hot water always ON:**

After the test the heating/hot water **turned OFF**



Please send us **the exact time and date** when you did the test, and **a picture of the wiring inside tado°** to allow us to further investigate and determine if a replacement is necessary.

After the test the heating/hot water **remained ON**



The problem **is not caused by tado°**, you might have to ask a heating engineer to check your system. If the heating engineer has any questions about tado°, they can find detailed information in our [Manual for Professional Installers](#).

Back