



Step-by-step **Installation Instructions**

These are your installation instructions to remove your **room thermostat**.
Please follow the instructions carefully and finish all the steps.

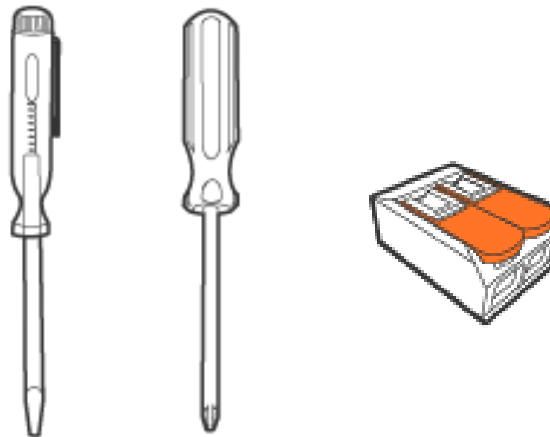


If you have any questions regarding the use or installation of tado° please consult our Help Center at help.tado.com

Prepare your tools for the installation

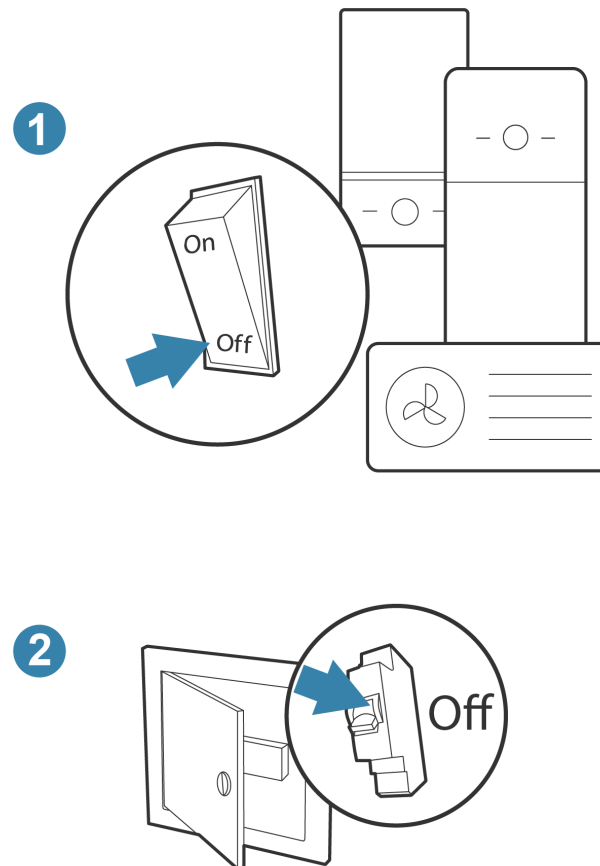
You will need the following:

- A phase tester, to ensure the electricity supply is correctly switched off.
- A Phillips screwdriver.
- 2-terminal connector blocks or electrical insulation tape



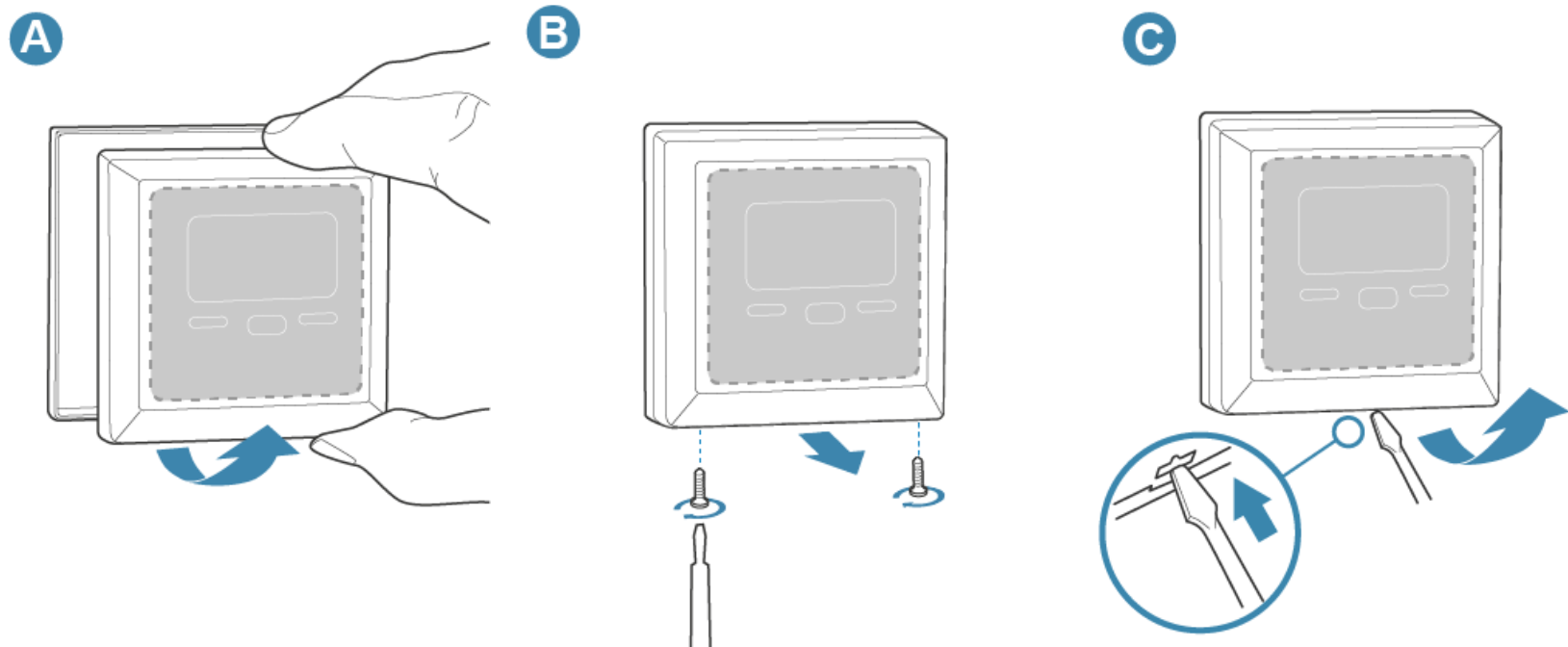
Switching off mains power

Make sure that the power to your heating system is turned off completely. You may need to switch the circuit breaker and the heat pump off, as shown in this generic example.



Open the external room thermostat

Remove the cover to open your room thermostat. There are different opening methods for every device. In most cases a few screws need to be removed. Have a look at our different examples to get an idea.

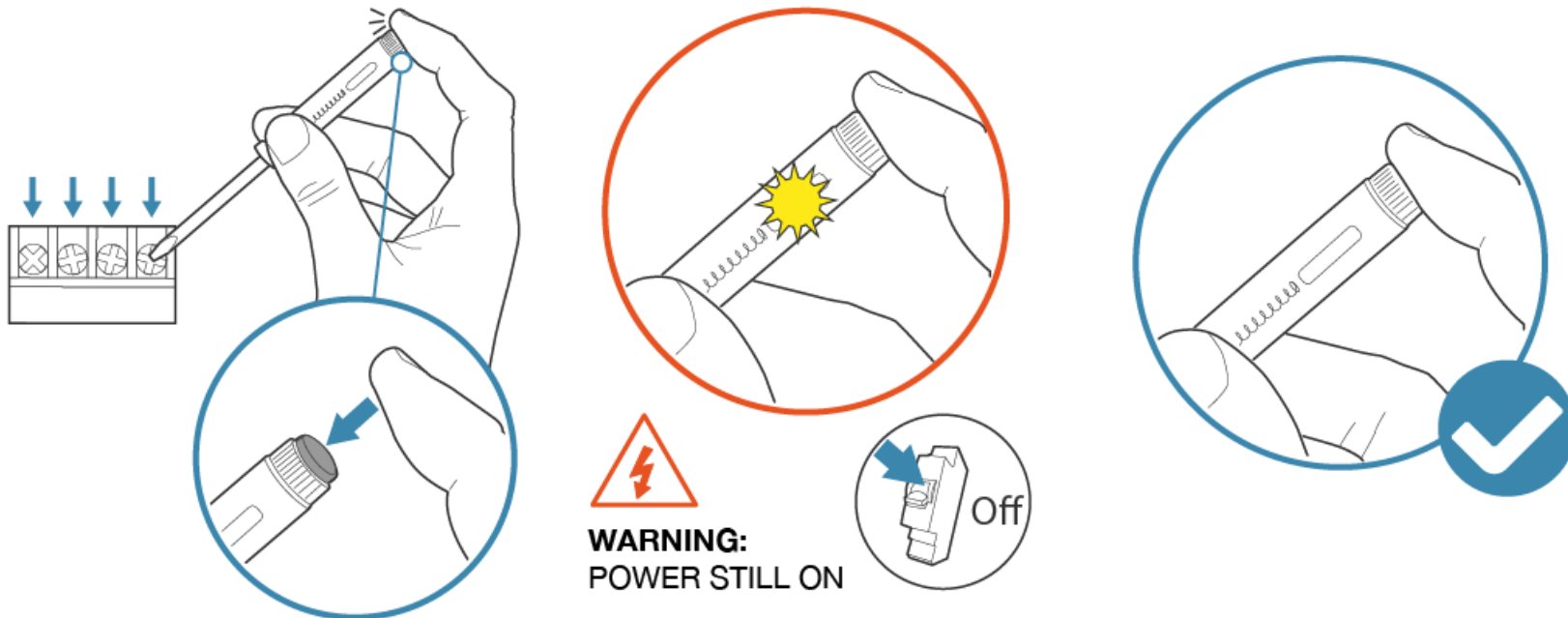


Make sure the power is off

Check all wiring terminals to make sure that the power is off, using e.g. a phase tester.

If the tester lights up, the terminals are still powered, check your fuse box or circuit breaker again. Switch the power to your heating system off before proceeding.

When you have confirmed the power is off, it is safe to proceed. The phase tester should no longer light up.

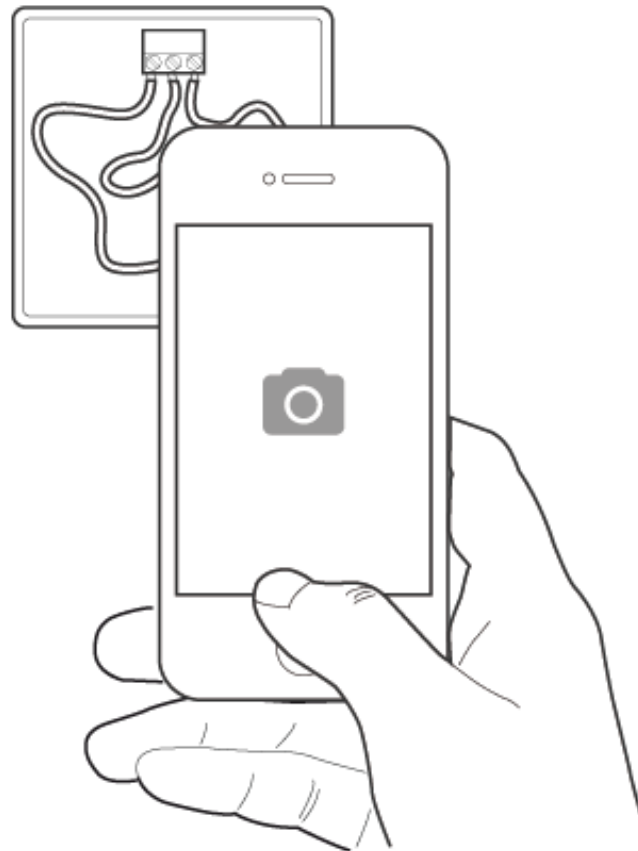


Document existing wiring

As soon as you have removed the cover, please take detailed pictures of the existing wiring with the cables still attached. Try your best to make sure that the terminal numbers are legible.

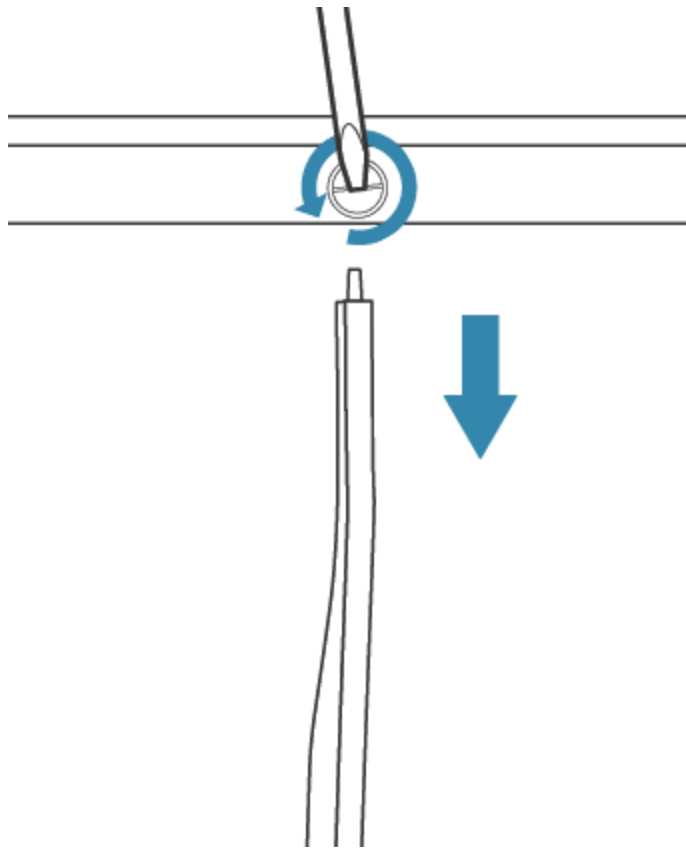


Keep these photos safe. You will need them if you need to change your system or restore your old system setup.

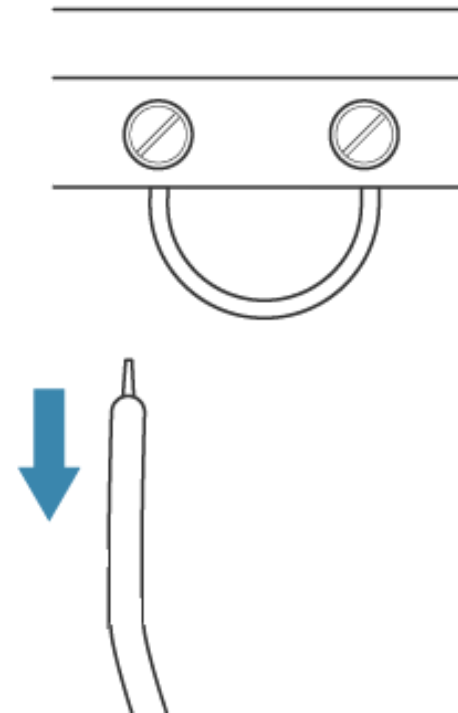


Release the wires

Loosen the screws to open the terminals. Then, disconnect the wires from the terminals.

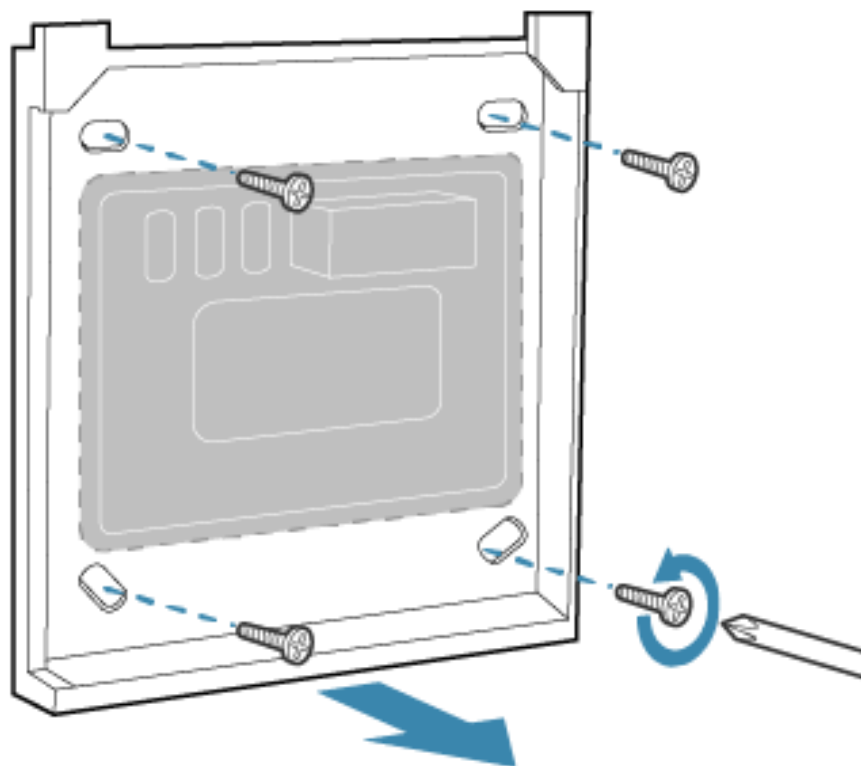


If there's a bridge, leave it in place, as shown.



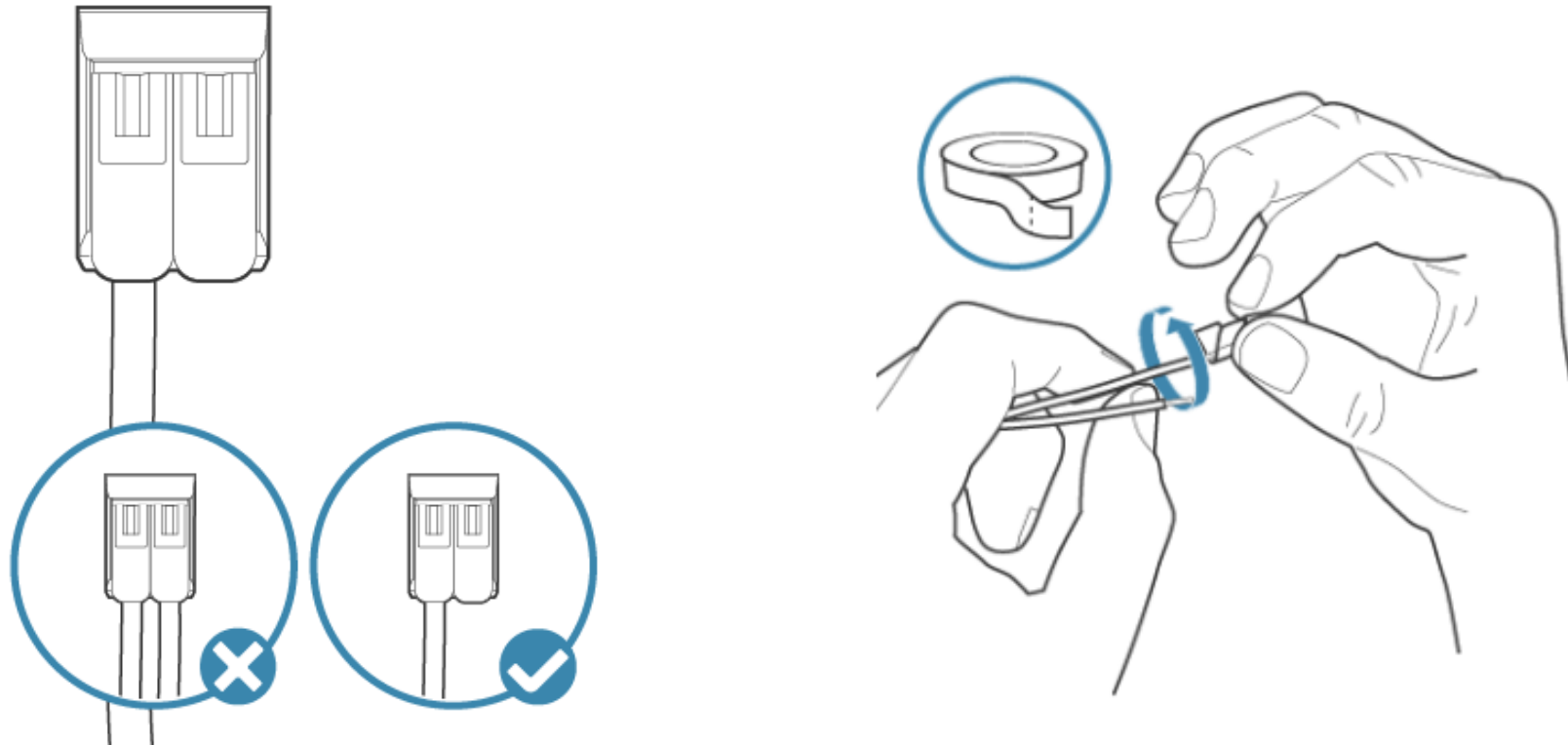
Remove the room thermostat

Loosen the screws and take the room thermostat off the wall.



Insulate the wires

Please get some 2-terminal connector blocks or electrical insulation tape at a hardware store to insulate the wires.



Cover the opening in the wall

Cover the opening where your thermostat was previously installed. You can either use a blank cover plate or, if you plan to install a tado° Wireless Temperature Sensor, mount it here.



Switch on the mains power

You can now turn the power and your heat pump back on.

