

FUYL Tower™ Pro

SMART LOCKERS POWERED BY



A complete hardware and software solution to efficiently charge, store, secure and manage mobile devices.

Automate device management to save time and money.



Check In/Out



Break/Fix



Shared Devices



Loaner Devices



Public Charging

Automate manual processes for managing mobile devices to reduce wasted time, minimize device downtime, provide convenient access to devices 24/7/365, offer secure charging on demand and much more.

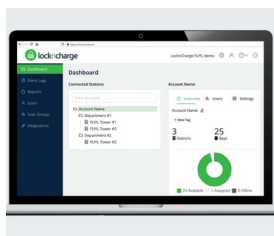


Manage User Access to Towers with External Directory Integration. Integrating your organization's Active Directory, Google Workspace*, or other LDAP-compatible directory simplifies and centralizes Admin control of user access to FUYL Towers. This integration enhances security, allows for faster setup and offers easier maintenance of Tower users and user group(s). If you prefer not to integrate, a built-in User Directory is also available to manually add and manage users.



Charge Quickly and Store Safely so Devices Are Always Ready for Use.

All bays contain a power outlet and a 36W USB-C Power Delivery (PD) port so you can securely charge almost any device at the fastest rate possible: iPads, tablets, laptops, mobile phones, Chromebooks and more.¹

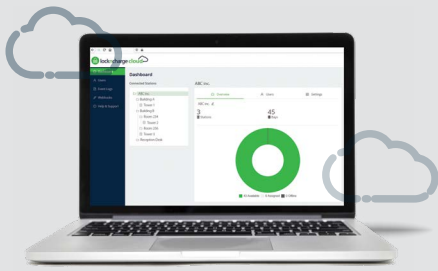


Manage Multiple Towers from One Centralized, Web-Based Portal. Give designated admins detailed access to view and manage any number of Towers.



Integrate LocknCharge Cloud with External Systems. Take device management to the next level. Using Cloud API and webhooks, LocknCharge Cloud can be integrated into external and/or existing IT infrastructure.

* Must be on a compatible Google Workspace plan.










lockncharge cloud

Manage Towers from the Cloud

LocknCharge Cloud grants access to the web-based management portal. Initial subscription is included with every FUYL Tower Pro.²

- ✓ Create a tree structure to organize and manage Towers easily.
- ✓ Set up and manage Towers with three levels of administration: Owner, Admin or Station Admin.
- ✓ Easily cascade settings to all Towers, nodes of Towers or specific Towers to make setting up and managing Towers quick and efficient.
- ✓ Admins can create User Groups and Roles to better manage users
- and to authorize large sets of users to specific Towers or nodes of Towers.
- ✓ Simplify roster management by integrating any LDAP-compatible directory or using our native integration to Google's directory services.
- ✓ Grant specific users access to certain bays or Towers by using their RFID badge or assigned PIN code.
- ✓ Cloud provides thorough accountability by tracking bay reservations, door access, breaches or multiple failed PIN attempts in the event logs. Knowing who opened a bay and when it was opened reduces device breakage, loss and theft.
- ✓ Reporting tools provide visibility into data such as existing reservations in real time or station usage statistics to maximize your investment.
- ✓ View Tower status at the company, Tower or bay level to see detailed information, such as whether bays are assigned, available or offline.
- ✓ Remotely control Tower access to unlock bays, take a bay offline, clear a user from a reserved bay, set a curfew, or even to completely lock down a Tower.
- ✓ Update Tower firmware and software over the air.
- ✓ Integrate existing IT infrastructure into Tower workflow through Cloud API and webhooks.

Additional Benefits

-  **Multi-Level Security.** All data stored in the Cloud is protected by industry-standard encryption certificates. LocknCharge Cloud remotely applies updates and security patches to Towers as they become available to better prepare against cyber attacks. Heavy-duty steel construction ensures devices are kept safe while inside the Tower, and Two-Factor Authentication (2FA) protects your account from unauthorized access.
-  **Bay Visibility.** Each bay has an external LED indicator to know if a bay is available (green), reserved (white) or offline (no light). A window provides visibility inside each bay—or if privacy is preferred, window-blocking plates are also included.
-  **RFID or PIN Code Access.** Bays can be opened via RFID or PIN code. FUYL Tower supports almost every RFID standard on the market.
-  **Future Proof.** Modular replacement parts and quick access panels allow for hardware serviceability in the field.
-  **Easy-to-Follow Tower Display.** Administrative functions are available from the 4.3" Graphical Colour Tower Control Module and Keypad. The Tower's user interface is simple to navigate for both admins and users.
-  **Curfew Settings.** LocknCharge Cloud allows admins to configure Tower settings to restrict access to the Tower or a Tower node.
-  **Optional Network Kit.** An optional Network Kit expands the data transfer capabilities through individual Ethernet connections to each bay. The Network Kit enables installation of a network switch (not included), making it possible to re-image devices remotely.



Robust Warranty.

Should any issues arise, our products are backed by a robust warranty and supported by a dedicated customer support team.*



World-Class Customer Support.

Our helpful and friendly Customer Support team will promptly assist with any product issues or questions that may arise.

FUYL Tower Pro 5 Specs: 23" (H) x 21" (W) x 19" (D) | 77 lbs
FUYL Tower Pro 15 Specs: 67" (H) x 21" (W) x 19" (D) | 194 lbs

FUYL Tower 5 Network Kit: 21.2" (H) x 19.2" (W) x 5.9" (D) | 12.1 lbs
FUYL Tower 15 Network Kit: 6" (H) x 21" (W) x 19" (D) | 30 lbs

Bay Specs: 3" (H) x 14" (W) x 17" (D)

www.lockncharge.com

Phone: (888) 943-6803 | info@lockncharge.com



Specifications and images are for illustration purposes only. Final product may differ. iPad is a trademark of Apple Inc., registered in the U.S. and other countries. *Please see www.lockncharge.com/lockncharge-product-warranty for complete warranty details. ¹ May not fit all devices and cases. Please check compatibility. ² LocknCharge Cloud can be renewed for an annual fee after initial subscription expires. Contact our awesome customer service team for more details.

