

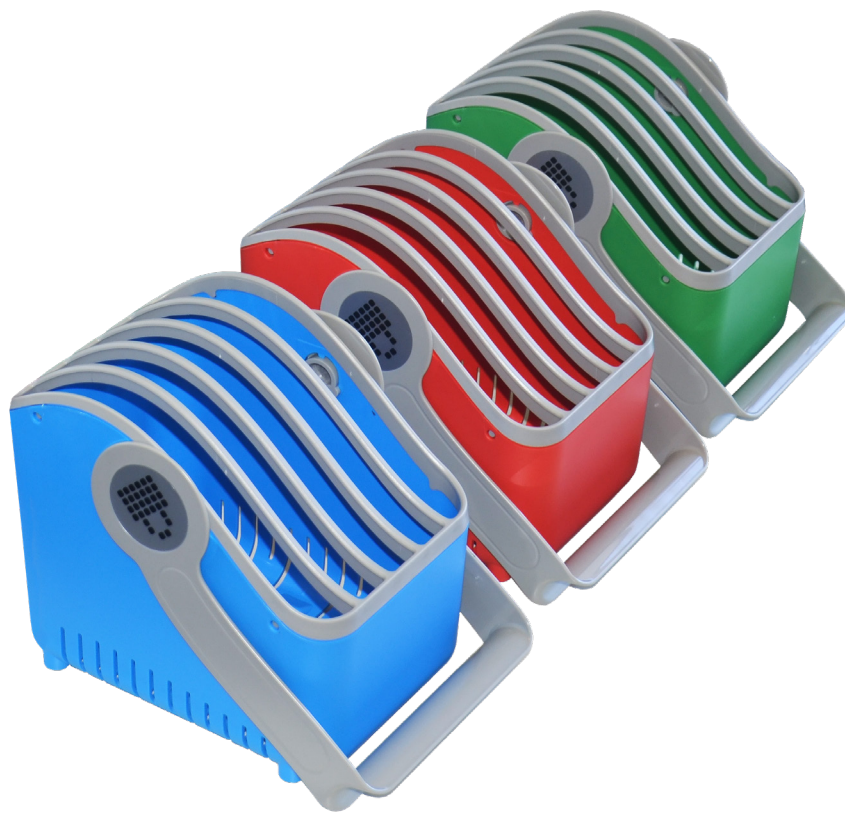
# Does your device fit in the Small Basket by LocknCharge? Check it here.

To ensure accurate measurements, please print to scale and on a Ledger size page (portrait).

24.5 mm or  
0.96 inches

## STEP 1 – Check the device thickness

Check the thickness of your device here. If the device thickness fits within the boundaries of this shape, you're almost there. Go to STEP 2.



## STEP 2 – Check the device dimensions

Place your device here. If the device fits within the boundaries of this shape, proceed to STEP 3.

## STEP 3 – Check device charging point

Ensure that the charging point is above the dashed line. If it does, then you're good to go.

[www.lockncharge.com](http://www.lockncharge.com)

### PLEASE NOTE:

It is your responsibility to ensure you measure your device correctly.

If you are planning to use a case with your device, ensure you have it on whilst checking the compatibility.

If the device is too thick with the cases installed, but fits with STEP 2 and 3, there is one more option, and that is to remove the moulded device divider from the top of the basket. For details about this option, please contact us for more details.

219 mm or 8.62 inches

294.9 mm or 11.61 inches