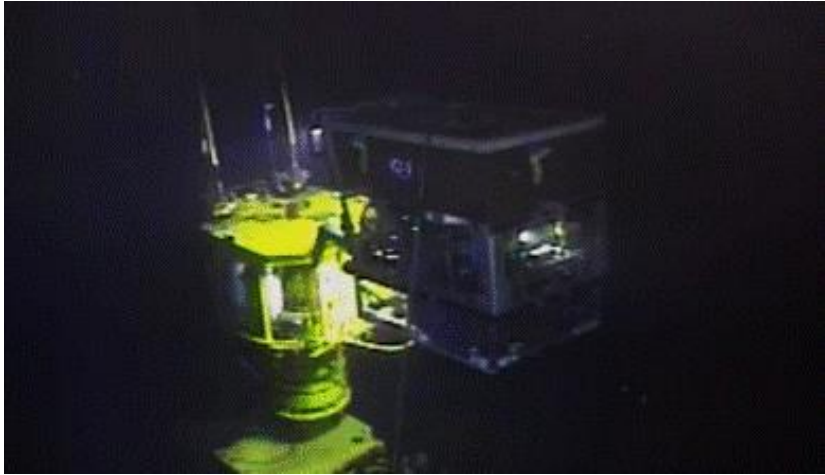


Case Study: Subsea Flowline Hydrate Remediation



Challenge

- Hydrate in the flowline prevented the well from being able to flow to the production facility.
- The customer estimated that we needed to remove 650 bbls of fluid to reduce the flowline pressure enough to disassociate the hydrate.
- A traditional ROV Subsea pump was envisioned but due to the volumes needed to be removed it was decided that an alternate method would be needed.

Solution

- A unique combination of a stimulation manifold, along with CT downlines was suggested to produce a continuous gas lift system and remove fluid from the line.

Results

- This configuration was able to remove a total of 850 bbls of fluid and remove the hydrate.
- Equipment configuration enabled reduced NPT due to our larger weather operating window.
-