

Abstract Collegiate Cubes Inform Modern Medical Lighting Design

A PureEdge Lighting Case Study



Location: Austin Regional Clinic Ambulatory Surgery Center, Austin, TX

Lighting System: Pipeline 1 Suspension

Lighting Specifier: Bell & McCoy

Lighting Designer: Marco Cue

The Austin Regional Clinic has numerous buildings for different specialties in Austin. For the Ambulatory Surgery Center, they purchased an existing building to improve, then analyzed costs and realized it would be a better investment to demolish the building and build a new 63,000 square foot, two-level building, but with a higher end design. The Lawrence Group was hired, and Design Professional Marco Cue was tasked with designing lighting for the main entry stairway landing and elevator lobby. While the lobby system is considered a simple 2D design, the stairway lighting was much more elaborate.

Marco explains, “We wanted something that was like a modern chandelier that had more depth and true dimensionality to it. We chose PureEdge’s **Pipeline 1 Suspension** because we were really impressed and liked the way that it worked and gave us freedom to design several things on our end. So I played around with it and remembered a concept design that I did back in college where we had to create 30 different cube ideas, where the idea was representing a cube without necessarily defining it strongly with all of it’s sides. It’s the way you envision an idea and the way you portray and reflect it without necessarily giving all the points, making it in a way that you can imagine it, even if it’s not entirely there. So I played with that idea and we came out with each fixture piece are separated into abstract cubes that are interconnected.”

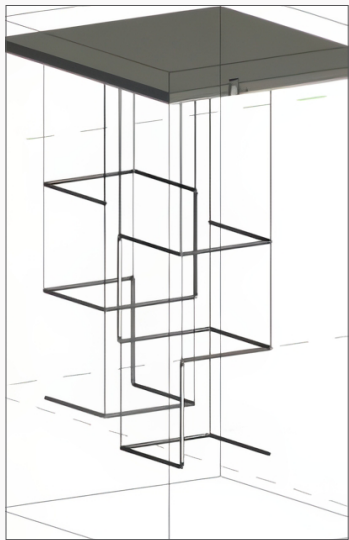
The USA Patented **Pipeline 1** (176° Lens) **Suspension Rotatable Modular System** is a sleek, low-profile lighting solution featuring 1.25" diameter diffused LED tubes and a variety of connectors that enable highly customizable configurations. Designed for versatility, this plug-and-play system allows users to run channels along exposed ceilings, turn corners, or even climb walls using L, T, X, Y, and flexible connectors. With adjustable 360° rotatable channels, it offers both direct and indirect lighting options, making it ideal for creative installations. The system supports remote power supplies up to 100 watts (End Feed) or dual 100 watts (Center Feed) and comes in lengths ranging from 12" to 120" (10 feet). It delivers high lumen output up to 1313 lumens per foot, with three wattage options (5, 7, or 10 watts), a wide 176° lens and 143° beam spread, and impressive efficiency. Users can choose from nine color temperature options ranging from **2200K** to **5700K**, including Warm Dim (**27D** and **30D**), all with high CRI values up to 95+. Designed for longevity, the system also boasts a 60,000-hour lamp life. Finishes include Satin Black, Chrome, Satin Nickel, White, Satin Brass with Black Canopy, and Satin Brass with White Canopy.

Marco continues, *"I'm terrible with hand drawings and like to design in 3D, so having the **PureEdge** family Revit files made things easy to manage. I had several concepts in mind, but the whole thing took shape because we had the connectors and we had the fixtures in 3D. It was entertaining and efficient to work with and just gave us the freedom to explore different options, create your own fixture, create your own chandelier. You can do something very simple like the elevator lobby lighting or something more complex like the stairway landing lighting. Having the freedom to design with this and in a way that we as architects and designers might not know all the intricacies of electrical connections and how all those things might work was nice. Having the simplicity with the joints, connections and attachment points the system has was great."*



Pipeline 1 Suspension

3D Rendering Concept





Marco concludes, "We got to play with a little bit of everything, which is the greatest and most rewarding part of being in this profession. **Pipeline** was a great product to work with and it was really fun designing these light fixtures. Having the spec sheets and the Revit families makes our lives easier and let us design with more elements in hand to create better products with less effort."

