

Serving Double Duty

as a means of wayfinding and center of illumination

A PureEdge Lighting Case Study

Location: University of Missouri, Lowry Hall, Columbia, MO

Lighting System: Pure Edge TruCurve I

Lighting Designer: IMEG

Architect: International Architects Atelier (IAA)

Owner : University of Missouri

Photography: ©Michael Robinson Photography

Lowry Hall, situated on the University of Missouri campus in Columbia, Missouri has a rich history. Originally constructed in 1904, Lowry Hall has undergone many renovations over the years with the latest major renovation/addition completed in 1981. To accommodate its growing student population, the University of Missouri hired International Architects Atelier to lead the revitalization of the first floor, creating a modern and functional space for the university community. IMEG served as the lighting consultant for IAA.

The project scope included the renovation of approximately 3,800 square feet of space on the first floor of Lowry Hall, including the existing main entry corridor, open office to the north, and offices, to the south. As all spaces were occupied during construction, the team created a phased approach to the build which was essential to the project's success to properly manage the relocation and use requirements of current and future occupants.

According to the design team at IAA, the existing floor plan layout split the floor into two areas devoted mainly to office space flanking each side of the main entry corridor. This split made the entry devoid of light and an uninviting feel for students.



“The design intent was to completely open up the first-floor entrance and transform the closed in office spaces into a student collaboration space for the College of Arts & Sciences.”



PureEdgeLighting.com

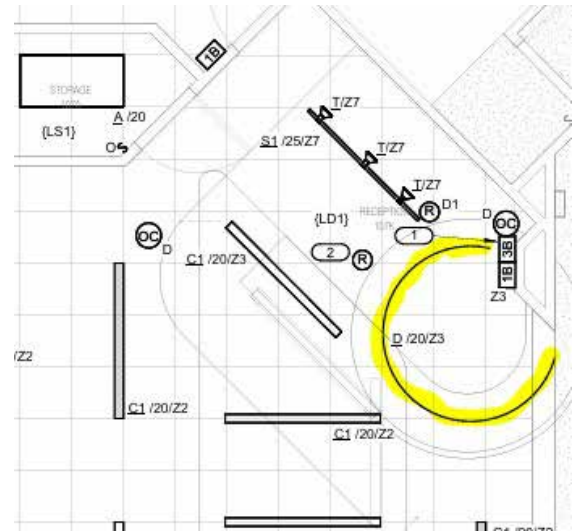
773.770.1195 | Contact us at design@pureedgelighting.com

Jordan Lake, AIA |
Senior Associate, IAA

”

The newly renovated facility houses a welcome desk, an open lobby to function as a gathering spot and collaboration hub for students and faculty, and a gallery to display the students' artwork. The northern half of the floor is devoted to a student lounge with supporting consultation offices and meeting rooms. The southern portion features private offices for the College of Arts & Sciences staff.

The design intent of the reception area was to create a wayfinding language for guiding students from the main entry into the open student lounge space. As guests enter the renovated space, they are visually drawn to the reception desk area that features the **PureEdge TruCurve 1** luminaire blending seamlessly into the ceiling drywall, becoming part of the architecture.



The curve effect was created with one 8' TRUCURVE 1 - 60W Channel and Lens | 3000K 7.5W/Ft



TruCurve is an innovative 24VDC LED system that can be recessed within 5/8" drywall without the need for joist modification. The system is available in 1' increments up to 40' before re-feeding and can be field-cut to any length. **TruCurve** brings a modern and minimal aesthetic to residential and commercial environments, offering unlimited creativity, and the freedom to design a one-of-a-kind, personalized space.

“

“The ceiling elements reflected the curve of the reception desk and the TruCurve fixture was critical in providing an elegant lighting approach that also strengthened the form of the desk below. We are happy with the end result and would look to specify this fixture again in the future.”

Jordan Lake, AIA |
Senior Associate, IAA

”

