

Art As The Centerpiece of Lighting Design

A PureEdge Lighting Case Study



✓ USA PATENTED

Location: Chicago – Private Residence

Lighting System: Pure Smart™ Architectural

Interior/Lighting Designer: Lisa Jaffe, Jaffe Architecture

Installation: Vigo Electric

TruTrack®

When a Chicago homeowner with a vast collection of art, including several Andy Warhol paintings, wanted to gut her space and start fresh with a clean, modern design, they called Lisa Jaffe of Jaffe Architecture. Jaffe explains, *“I’ve worked with this client before, so I was familiar with her preferences. She likes to keep the background of the space really relatively simple because her artwork is quite bold. So that was our goal. She prefers a contemporary aesthetic. With the homeowner being an art collector, it was very important to her that the lighting system be flexible. So that request lends itself to a track light. But most track lights are really not aesthetically pleasing. This one though, the **TruTrack®** with **Tubo Large** heads, because of the stealth nature of the recessed system is really very attractive. There’s nothing but the heads hanging down, and once you set your light where you want them, you insert the trim and the system looks even more flush.”*

This innovative, two-circuit **TruTrack**® system features magnetic track head connectors. **TruTrack**® is a plaster-in recessed 24VDC two circuit track system which allows for two groups of fixtures to switch and dim independently. Only as thick as the 5/8" drywall, the **TruTrack**® patented design is precision engineered to blend seamlessly within drywall surfaces, eliminating the need for joist modification, and provides more flexibility to make turns along the ceiling. For a clean architectural aesthetic, a paintable slot cover is supplied with **TruTrack**® leaving only the track head visible once installed.

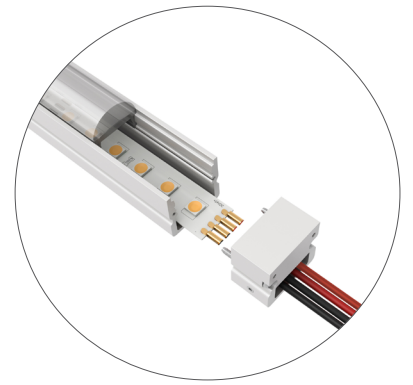


The Pure Smart **Tubo Large TruColor**™ RGBTW Track Head with Magnetic track adapter is available in 12W and 17W options. This luminaire that delivers up to 1271 lumens while exhibiting a simple yet appealing modern design. Being part of an entirely low voltage, class 2, 24VDC system, it offers unsurpassed efficiency in comparison to traditional track lighting systems. The low voltage track connector is compatible with 2-Circuit Magnetic TruTrack, TruTrack Trim Magnetic, and Magnetic Surface Track. Offered in multiple beam spreads and the optics/lenses can be changed in the field.



Jaffe continues, "For the kitchen we used the **Light Channel Micro Grazer** to highlight the architectural material, adding some ambient light. We almost always use a **PureEdge** product to do that type of lighting. And we certainly did in this home."

PureEdge Lighting's DIY (Do-It-Yourself) **Light Channel Micro Grazer** brings to life textural walls, panels, masonry, undulating tiles and so much more. Our slim, aluminum channel extrusions, LED strips, and lenses are field-cutttable and ordered in various increments anywhere from 2 to 7 watts per foot. Offered in a broad range of wattages and Color Temperatures from 2400K through 4000K, Warm Dim (**27D** or **30D**), Pro-Dim (**27KPD** or **30KPD**), Tunable White (**2K6K** or **27K6**), Dynamic RGB, RGB+White in 2000K (special order in 27K, 30K and 40K), and TruColor™ RGBTW Color Changing RGB with Tunable White 1500K-6500K. Available with a diffused white, clear or gel filter lens. With it's combination of flexibility, customization, and lighting quality, the **Light Channel Micro Grazer** is an excellent choice for illuminating a wide range of textured applications.



Twiggy S1 Vanity

For the bathrooms, PureEdge Lighting's **Twiggy** was used, along with **Lazer Strip** to backlight an oval mirror. **Twiggy S1** Tunable White features a Square 1" Diffused White Lens that provides uniform, Tunable White 2000K-6500K (**2K6K**) or 2700K-6500K (**27K6**) grants independent control and adjustment of color temperature and intensity from 2000K (Sunset) through 6500K (Day Light White). 2K6K is ideal for residential spaces including, dining rooms, bedrooms, living spaces, and bathrooms by allowing the user to achieve a warm glow during the golden hours of the early mornings and evenings. For commercial environments, 27K6 promotes focus and alertness which is ideal for offices, healthcare and education, while still achieving warmer color temperatures best for hospitality and retail environments. Human-Centric lighting, or tunable white, promotes performance, mood, and overall well-being by fine-tuning the emotional effects that light has on the circadian cycle.

The low voltage **Lazer Strip** has 148 LEDs per foot which provides uniform light distribution without pixelation. With a 120 degree beam angle, **Lazer Strip** is precision engineered to provide superior color rendering up to 94+ CRI. Static White Color Temperatures include 2400K, 2700K, 3000K, 3500K and 4000K, while Warm Dim Temperatures 3000K dims down to 2000K.

Jaffe concludes, "I like the quality of **PureEdge's** products, and that there are so many versions of a similar fixture. There's so many different things you can do right with one fixture that it gives us a lot of flexibility. We also get a lot of really good technical assistance, they're a good partner for us."



Lazer Strip