

Challenge

Outside of fully developed road weather monitoring networks, high-quality data from the road is scarce. Potentially, these gaps put drivers at risk. Gathering data securely and cost effectively can be difficult.

Solution

RWIS Lite is a concept to fill data gaps through streamlined road weather monitoring stations, that combine an optical road sensor, an all-in-one weather station, a communication unit, and harmonized software.

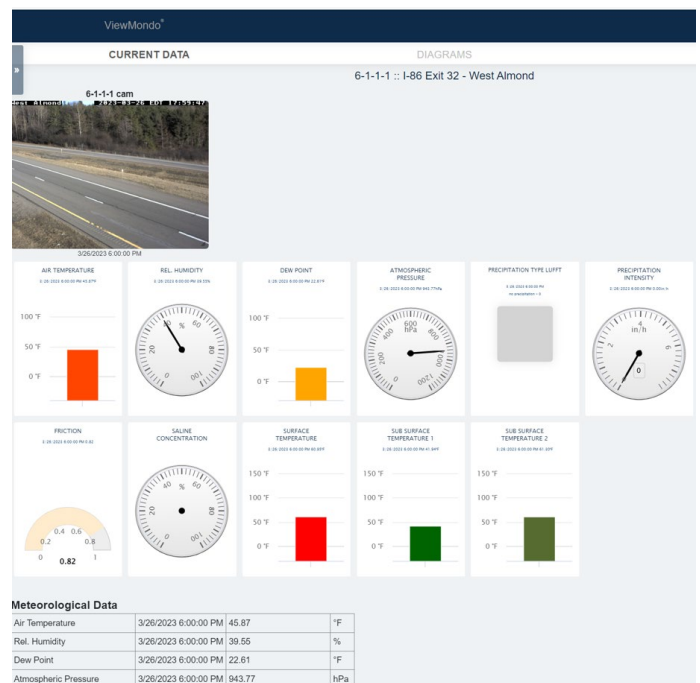
Benefits

The whole system serves as a stand-alone solution and transfers the essential data from the road to the user's screen. The tailored software package enables a secure encrypted and cost-efficient sensor communication.

RWIS Lite Setup

RWIS Lite is a stand-alone, streamlined road weather monitoring station, that provides the most vital meteorological parameters such as the road temperature, air temperature and relative humidity. An optional precipitation and wind sensor is included in the Lufft WS600 weather sensor. Because the system is modular, any sensor can be added including the Lufft NIRS non-contact road sensor or more basic road temp only sensors.

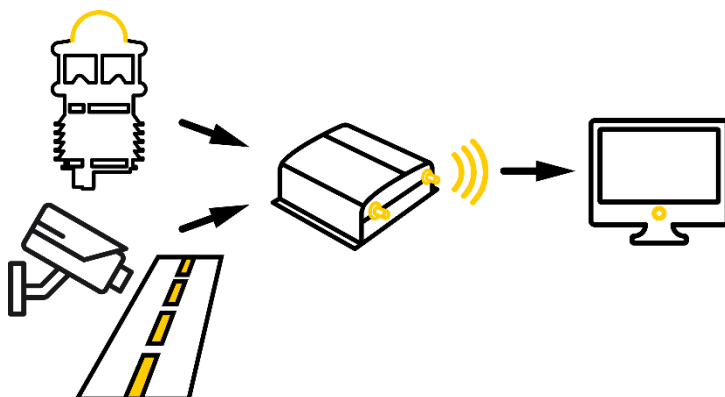
The Cloudgate mobile router combined with the UpCom® software plugin create a powerful communication module. The ViewMondo® software package completes the simple yet effective setup. The UpCom software enables secure and cost-efficient data communication with a data push that can be used with private networks such as fiber, dynamic IP addresses, or even WiFi.



ViewMondo provides clean and modifiable dashboards to visualize the gathered data from sensors and cameras.

Recommended System

Weather station WS600, Non-contact road weather sensor such as Lufft NIRS or other → Compact Cloudgate communication module and UpCom® plugin → ViewMondo software




an OTT HydroMet brand

Further information

[Podcast: Increasing Safety with Streamlined RWIS Lite](#)

Contact

[Questions? Ask them!](#)

