

# dime<sup>®</sup>

DESIGNS IN MACHINE EMBROIDERY



## HOOPING SYSTEMS COMPATIBILITY CHART





## SNAP HOOP MONSTER

### Designed for Ease

Snap Hoop Monster comes with a flat magnetic top and metal bottom frame. The bottom frame includes a machine attachment that is recognized by the embroidery machine. Simply lay the stabilizer and fabric over the bottom frame and snap the top frame in place. Voila! Even the heaviest of fabric is secured.

### Be Creative with Heavy-Duty Fabrics

Multiple hoopings are a breeze with the Snap Hoop Monster. Easily achieve flawless continuous embroidery when stitching quilts, towels and more. Stitch all the way to the edge of fabric by securing just two or more sides in the hoop.

### Snap Hoop Monster includes:

- One metal base frame with machine attachment
- One magnetic top frame
- One magnetic safety shield
- Four adhesive centering rulers
- 1 sheet of Target Stickers
- Printed instructions



## STICKY HOOP

### Hoop-free, hoop sideless, hoop sticky!

Sticky Hoops provide a flat surface for hoopless embroidery. Pre-cut, tearaway adhesive stabilizer gives a strong stable hold for embroidery projects.

The flat metal frame streamlines trimming for applique and in-the-hoop projects. No embroidery rings to interfere with trimming! And, since materials can extend beyond the sewing field, the Sticky Hoop is "sideless"!

### Designed for Ease

Sticky Hoop comes with a metal bottom frame. The bottom frame includes a machine attachment that is recognized by the embroidery machine.

### Sticky Hoop includes:

- Sticky Hoop frame
- 5 sheets of Peel 'n Stick tear-away adhesive stabilizer pre-cut for your hoop size
- 4 adhesive centering guides



## QUICK SNAP 2.0

### Conquer difficult to hoop items

Embroider sleeves and pant legs without opening a seam!

### Quick Snap 2.0 includes:

- Three metal bottom frames and three magnetic tops:
  - 2" x 8" (Perfect for Sleeves)
  - 4" x 8" (Great for Pant Legs)
  - 5.5" x 8" (Ideal for Children's Wear & Pockets)
- Quick Snap Extension

# FIND A HOOPING SYSTEM FOR YOUR MACHINE MODEL



## MULTI-NEEDLE MONSTER

**A monster-grip for heavy-duty projects!**  
Experience the effortless one-step method to hoop and align heavyweight fabrics. The secret is in the patented design of the Snap Hoop Monster.

**Designed for Ease  
and Recognized by Your Machine**  
Multi Needle Monster comes with one flat magnetic frame and one metal frame that slips right into the embroidery frame holder. Simply lay the stabilizer and fabric over the teal-colored magnetic frame and snap the metal frame in place. Slide it into the embroidery frame holder, and voila!

Multi Needle Monster is completely flat, eliminating the nuisance of excess fabric falling into the embroidery field.

### Multi-Needle Monster includes:

- One metal frame recognized by your machine
- One magnetic frame
- One magnet safety shield
- Four adhesive centering rulers

### Snap Hoop Monster for Single-Needle Machines

Baby Lock	.....	4 - 5
Bernina	.....	16
Brother	.....	8 - 11
Husqvarna Viking	.....	17
Janome / Elna	.....	18
Pfaff	.....	19

### Sticky Hoop for Single-Needle Machines

Baby Lock	.....	6 - 7
Bernina	.....	16
Brother	.....	12 - 15
Husqvarna Viking	.....	17
Janome / Elna	.....	18
Pfaff	.....	19

### Snap Hoop Monster for Single-Needle Tubular Machines

Baby Lock	.....	20
Brother	.....	20

### Snap Hoop Monster for Multi-Needle Machines

Baby Lock	.....	20
Brother	.....	20
Janome	.....	20
SWF	.....	20

### Quick Snap 2.0 for Multi-Needle Machines

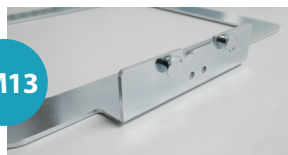
Baby Lock	.....	21
Brother	.....	21

Hoop Size Chart	.....	22 - 23
-----------------	-------	---------

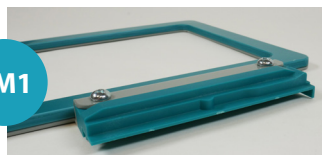
**baby lock**

**FOR THE LOVE OF SEWING**

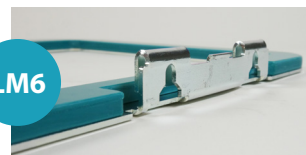
**LM13**



**LM1**



**LM6**



Single-Needle Machine Models	SNAP HOOP MONSTER				
	4" x 4"	5" x 7"	6" x 6"	6" x 10"	7" x 12"*
Accord	-----	<b>LM6</b> SKU: SH00A6M	-----	-----	-----
Aerial	<b>LM3</b> SKU: SH00A3M	<b>LM1</b> SKU: SH00A1M	<b>LM14</b> SKU: SH00A14M	<b>LM8</b> SKU: SH00A8M	<b>LM5</b> SKU: SH00A5M
Altair, Altair 2	<b>LM3</b> SKU: SH00A3M	<b>LM1</b> SKU: SH00A1M	<b>LM14</b> SKU: SH00A14M	<b>LM8</b> SKU: SH00A8M	<b>LM5</b> SKU: SH00A5M
Aventura I and II	<b>LM3</b> SKU: SH00A3M	<b>LM1</b> SKU: SH00A1M	<b>LM14</b> SKU: SH00A14M	<b>LM8</b> SKU: SH00A8M	-----
Bloom	-----	<b>LM6</b> SKU: SH00A6M	-----	-----	-----
Destiny BLDY	<b>LM3</b> SKU: SH00A3M	<b>LM1</b> SKU: SH00A1M	<b>LM14</b> SKU: SH00A14M	<b>LM8</b> SKU: SH00A8M	<b>LM5</b> SKU: SH00A5M
Destiny BLDY 2	<b>LM3</b> SKU: SH00A3M	<b>LM1</b> SKU: SH00A1M	<b>LM14</b> SKU: SH00A14M	<b>LM8</b> SKU: SH00A8M	<b>LM5</b> SKU: SH00A5M
Ellageo BLL all versions	<b>LM3</b> SKU: SH00A3M	<b>LM1</b> SKU: SH00A1M	-----	<b>LM8</b> SKU: SH00A8M	-----
Ellageo Plus ESG, ESG2, ESG3	<b>LM3</b> SKU: SH00A3M	-----	-----	-----	-----
Ellegante all versions	<b>LM3</b> SKU: SH00A3M	<b>LM1</b> SKU: SH00A1M	-----	<b>LM8</b> SKU: SH00A8M	<b>LM5</b> SKU: SH00A5M
Ellisimo all versions	<b>LM3</b> SKU: SH00A3M	<b>LM1</b> SKU: SH00A1M	<b>LM14</b> SKU: SH00A14M	<b>LM8</b> SKU: SH00A8M	<b>LM5</b> SKU: SH00A5M
Ellure BLR, Ellure Plus BLR2, BLR3	-----	<b>LM6</b> SKU: SH00A6M	-----	-----	-----
Emore BLMR	-----	<b>LM6</b> SKU: SH00A6M	-----	-----	-----
Esante all versions except ESe2	<b>LM3</b> SKU: SH00A3M	<b>LM1</b> SKU: SH00A1M	-----	<b>LM8</b> SKU: SH00A8M	-----
Esante ESe2	-----	<b>LM6</b> SKU: SH00A6M	-----	-----	-----
Flare	<b>LM3</b> SKU: SH00A3M	<b>LM1</b> SKU: SH00A1M	<b>LM14</b> SKU: SH00A14M	<b>LM8</b> SKU: SH00A8M	-----
Flourish, Flourish II	<b>LM3</b> SKU: SH00A3M	<b>LM1</b> SKU: SH00A1M	<b>LM14</b> SKU: SH00A14M	<b>LM8</b> SKU: SH00A8M	-----
Journey	<b>LM3</b> SKU: SH00A3M	<b>LM1</b> SKU: SH00A1M	<b>LM14</b> SKU: SH00A14M	<b>LM8</b> SKU: SH00A8M	<b>LM5</b> SKU: SH00A5M
Meridian, Meridian 2	<b>LM3</b> SKU: SH00A3M	<b>LM1</b> SKU: SH00A1M	<b>LM14</b> SKU: SH00A14M	<b>LM8</b> SKU: SH00A8M	<b>LM5</b> SKU: SH00A5M
Pathfinder	<b>LM3</b> SKU: SH00A3M	<b>LM1</b> SKU: SH00A1M	<b>LM14</b> SKU: SH00A14M	<b>LM8</b> SKU: SH00A8M	<b>LM5</b> SKU: SH00A5M
Radiance	<b>LM3</b> SKU: SH00A3M	<b>LM1</b> SKU: SH00A1M	<b>LM14</b> SKU: SH00A14M	<b>LM8</b> SKU: SH00A8M	<b>LM5</b> SKU: SH00A5M
Solaris Series	<b>LM3</b> SKU: SH00A3M	<b>LM1</b> SKU: SH00A1M	<b>LM14</b> SKU: SH00A14M	<b>LM8</b> SKU: SH00A8M	<b>LM5</b> SKU: SH00A5M
Sophia	<b>LM13</b> SKU: SH00A13M	-----	-----	-----	-----
Spirit	<b>LM3</b> SKU: SH00A3M	<b>LM1</b> SKU: SH00A1M	<b>LM14</b> SKU: SH00A14M	<b>LM8</b> SKU: SH00A8M	<b>LM5</b> SKU: SH00A5M
Unity BLTY	<b>LM3</b> SKU: SH00A3M	<b>LM1</b> SKU: SH00A1M	<b>LM14</b> SKU: SH00A14M	<b>LM8</b> SKU: SH00A8M	<b>LM5</b> SKU: SH00A5M
Vesta	<b>LM3</b> SKU: SH00A3M	<b>LM1</b> SKU: SH00A1M	<b>LM14</b> SKU: SH00A14M	<b>LM8</b> SKU: SH00A8M	-----

\* Due to magnet width restrictions, the LM5 sewing field is 6.69" x 12" 170 x 300mm - 10mm narrower than the standard 7" x 12" 180 x 300mm hoop.



FOR THE LOVE OF SEWING

Single-Needle Machine Models	SNAP HOOP MONSTER					
	8" x 8"	8" x 12"	9.5" x 9.5"	9.5" x 14"	10 <sup>5/8</sup> " x 10 <sup>5/8</sup> "	10 <sup>5/8</sup> " x 16"
Accord	-----	-----	-----	-----	-----	-----
Aerial	<b>LM2</b> SKU: SH00A2M	<b>LM7</b> SKU: SH00A7M	-----	-----	-----	-----
Altair, Altair 2	<b>LM2</b> SKU: SH00A2M	<b>LM7</b> SKU: SH00A7M	<b>LM10</b> SKU: SH00A10M	<b>LM9</b> SKU: SH00A9M	-----	-----
Aventura I and II	-----	-----	-----	-----	-----	-----
Bloom	-----	-----	-----	-----	-----	-----
Destiny BLDY	<b>LM2</b> SKU: SH00A2M	<b>LM7</b> SKU: SH00A7M	<b>LM10</b> <sup>1</sup> SKU: SH00A10M	<b>LM9</b> SKU: SH00A9M	-----	-----
Destiny BLDY 2	<b>LM2</b> SKU: SH00A2M	<b>LM7</b> SKU: SH00A7M	<b>LM10</b> SKU: SH00A10M	<b>LM9</b> SKU: SH00A9M	-----	-----
Ellageo BLL all versions	-----	-----	-----	-----	-----	-----
Ellageo Plus ESG, ESG2, ESG3	-----	-----	-----	-----	-----	-----
Ellegante all versions	-----	-----	-----	-----	-----	-----
Ellisimo all versions	<b>LM2</b> SKU: SH00A2M	<b>LM7</b> SKU: SH00A7M	-----	-----	-----	-----
Ellure BLR, Ellure Plus BLR2, BLR3	-----	-----	-----	-----	-----	-----
Emore BLMR	-----	-----	-----	-----	-----	-----
Esante all versions except ESe2	-----	-----	-----	-----	-----	-----
Esante ESe2	-----	-----	-----	-----	-----	-----
Flare	-----	-----	-----	-----	-----	-----
Flourish, Flourish II	-----	-----	-----	-----	-----	-----
Journey	<b>LM2</b> <sup>1</sup> SKU: SH00A2M	<b>LM7</b> <sup>1</sup> SKU: SH00A7M	-----	-----	-----	-----
Meridian, Meridian 2	<b>LM2</b> SKU: SH00A2M	<b>LM7</b> SKU: SH00A7M	<b>LM10</b> SKU: SH00A10M	<b>LM9</b> SKU: SH00A9M	-----	-----
Pathfinder	<b>LM2</b> SKU: SH00A2M	<b>LM7</b> SKU: SH00A7M	-----	-----	-----	-----
Radiance	<b>LM2</b> SKU: SH00A2M	<b>LM7</b> SKU: SH00A7M	<b>LM10</b> SKU: SH00A10M	<b>LM9</b> SKU: SH00A9M	<b>LM12</b> SKU: SH00A12M	<b>LM11</b> SKU: SH00A11M
Solaris Series	<b>LM2</b> SKU: SH00A2M	<b>LM7</b> SKU: SH00A7M	<b>LM10</b> SKU: SH00A10M	<b>LM9</b> SKU: SH00A9M	<b>LM12</b> <sup>2</sup> SKU: SH00A12M	<b>LM11</b> SKU: SH00A11M
Sophia	-----	-----	-----	-----	-----	-----
Spirit	<b>LM2</b> <sup>1</sup> SKU: SH00A2M	<b>LM7</b> <sup>1</sup> SKU: SH00A7M	-----	-----	-----	-----
Unity BLTY	<b>LM2</b> <sup>1</sup> SKU: SH00A2M	<b>LM7</b> <sup>1</sup> SKU: SH00A7M	-----	-----	-----	-----
Vesta	-----	-----	-----	-----	-----	-----

<sup>1</sup> with upgrade kit

<sup>2</sup> BLSA requires upgrade kit

Single-Needle Machine Models	STICKY HOOPS				
	4" x 4"	5" x 7"	6" x 6"	6" x 10"	7" x 12"***
Accord	-----	<b>LS6</b> SKU: SH00A6S	-----	-----	-----
Aerial	<b>LS3</b> SKU: SH00A3S	<b>LS1</b> SKU: SH00A1S	<b>LS14</b> SKU: SH00A14S	<b>LS8</b> SKU: SH00A8S	<b>LS5</b> SKU: SH00A5S
Altair, Altair 2	<b>LS3</b> SKU: SH00A3S	<b>LS1</b> SKU: SH00A1S	<b>LS14</b> SKU: SH00A14S	<b>LS8</b> SKU: SH00A8S	<b>LS5</b> SKU: SH00A5S
Aventura I and II	<b>LS3</b> SKU: SH00A3S	<b>LS1</b> SKU: SH00A1S	<b>LS14</b> SKU: SH00A14S	<b>LS8</b> SKU: SH00A8S	-----
Bloom	-----	<b>LS6</b> SKU: SH00A6S	-----	-----	-----
Destiny BLDY	<b>LS3</b> SKU: SH00A3S	<b>LS1</b> SKU: SH00A1S	<b>LS14</b> SKU: SH00A14S	<b>LS8</b> SKU: SH00A8S	<b>LS5</b> SKU: SH00A5S
Destiny BLDY 2	<b>LS3</b> SKU: SH00A3S	<b>LS1</b> SKU: SH00A1S	<b>LS14</b> SKU: SH00A14S	<b>LS8</b> SKU: SH00A8S	<b>LS5</b> SKU: SH00A5S
Ellageo BLL all versions	<b>LS3</b> SKU: SH00A3S	<b>LS1</b> SKU: SH00A1S	-----	<b>LS8</b> SKU: SH00A8S	-----
Ellageo Plus ESG, ESG2, ESG3	<b>LS3</b> SKU: SH00A3S	-----	-----	-----	-----
Ellegante all versions	<b>LS3</b> SKU: SH00A3S	<b>LS1</b> SKU: SH00A1S	-----	<b>LS8</b> SKU: SH00A8S	<b>LS5</b> SKU: SH00A5S
Ellisimo all versions	<b>LS3</b> SKU: SH00A3S	<b>LS1</b> SKU: SH00A1S	<b>LS14</b> SKU: SH00A14S	<b>LS8</b> SKU: SH00A8S	<b>LS5</b> SKU: SH00A5S
Ellure BLR, Ellure Plus BLR2, BLR3	-----	<b>LS6</b> SKU: SH00A6S	-----	-----	-----
Emore BLMR	-----	<b>LS6</b> SKU: SH00A6S	-----	-----	-----
Esante all versions except ESe2	<b>LS3</b> SKU: SH00A3S	<b>LS1</b> SKU: SH00A1S	-----	<b>LS8</b> SKU: SH00A8S	-----
Esante ESe2	-----	<b>LS6</b> SKU: SH00A6S	-----	-----	-----
Flare	<b>LS3</b> SKU: SH00A3S	<b>LS1</b> SKU: SH00A1S	<b>LS14</b> SKU: SH00A14S	<b>LS8</b> SKU: SH00A8S	-----
Flourish, Flourish II	<b>LS3</b> SKU: SH00A3S	<b>LS1</b> SKU: SH00A1S	<b>LS14</b> SKU: SH00A14S	<b>LS8</b> SKU: SH00A8S	-----
Journey	<b>LS3</b> SKU: SH00A3S	<b>LS1</b> SKU: SH00A1S	<b>LS14</b> SKU: SH00A14S	<b>LS8</b> SKU: SH00A8S	<b>LS5</b> SKU: SH00A5S
Meridian, Meridian 2	<b>LS3</b> SKU: SH00A3S	<b>LS1</b> SKU: SH00A1S	<b>LS14</b> SKU: SH00A14S	<b>LS8</b> SKU: SH00A8S	<b>LS5</b> SKU: SH00A5S
Pathfinder	<b>LS3</b> SKU: SH00A3S	<b>LS1</b> SKU: SH00A1S	<b>LS14</b> SKU: SH00A14S	<b>LS8</b> SKU: SH00A8S	<b>LS5</b> SKU: SH00A5S
Radiance	<b>LS3</b> SKU: SH00A3S	<b>LS1</b> SKU: SH00A1S	<b>LS14</b> SKU: SH00A14S	<b>LS8</b> SKU: SH00A8S	<b>LS5</b> SKU: SH00A5S
Solaris Series	<b>LS3</b> SKU: SH00A3S	<b>LS1</b> SKU: SH00A1S	<b>LS14</b> SKU: SH00A14S	<b>LS8</b> SKU: SH00A8S	<b>LS5</b> SKU: SH00A5S
Sophia	<b>LS13</b> SKU: SH00A13S	-----	-----	-----	-----
Spirit	<b>LS3</b> SKU: SH00A3S	<b>LS1</b> SKU: SH00A1S	<b>LS14</b> SKU: SH00A14S	<b>LS8</b> SKU: SH00A8S	<b>LS5</b> SKU: SH00A5S
Unity BLTY	<b>LS3</b> SKU: SH00A3S	<b>LS1</b> SKU: SH00A1S	<b>LS14</b> SKU: SH00A14S	<b>LS8</b> SKU: SH00A8S	<b>LS5</b> SKU: SH00A5S
Vesta	<b>LS3</b> SKU: SH00A3S	<b>LS1</b> SKU: SH00A1S	<b>LS14</b> SKU: SH00A14S	<b>LS8</b> SKU: SH00A8S	-----

\* Due to magnet width restrictions, the LM5 sewing field is 6.69" x 12" 170 x 300mm - 10mm narrower than the standard 7" x 12" 180 x 300mm hoop.



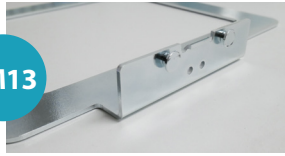
FOR THE LOVE OF SEWING

Single-Needle Machine Models	STICKY HOOPS					
	8" x 8"	8" x 12"	9.5" x 9.5"	9.5" x 14"	10 <sup>5</sup> / <sub>8</sub> " x 10 <sup>5</sup> / <sub>8</sub> "	10 <sup>5</sup> / <sub>8</sub> " x 16"
Accord	-----	-----	-----	-----	-----	-----
Aerial	<b>LS2</b> SKU: SH00A2S	<b>LS7</b> SKU: SH00A7S	-----	-----	-----	-----
Altair, Altair 2	<b>LS2</b> SKU: SH00A2S	<b>LS7</b> SKU: SH00A7S	<b>LS10</b> SKU: SH00A10S	<b>LS9</b> SKU: SH00A9S	-----	-----
Aventura I and II	-----	-----	-----	-----	-----	-----
Bloom	-----	-----	-----	-----	-----	-----
Destiny BLDY	<b>LS2</b> SKU: SH00A2S	<b>LS7</b> SKU: SH00A7S	<b>LS10</b> <sup>1</sup> SKU: SH00A10S	<b>LS9</b> SKU: SH00A9S	-----	-----
Destiny BLDY 2	<b>LS2</b> SKU: SH00A2S	<b>LS7</b> SKU: SH00A7S	<b>LS10</b> SKU: SH00A10S	<b>LS9</b> SKU: SH00A9S	-----	-----
Ellageo BLL all versions	-----	-----	-----	-----	-----	-----
Ellageo Plus ESG, ESG2, ESG3	-----	-----	-----	-----	-----	-----
Ellegante all versions	-----	-----	-----	-----	-----	-----
Ellisimo all versions	<b>LS2</b> SKU: SH00A2S	<b>LS7</b> SKU: SH00A7S	-----	-----	-----	-----
Ellure BLR, Ellure Plus BLR2, BLR3	-----	-----	-----	-----	-----	-----
Emore BLMR	-----	-----	-----	-----	-----	-----
Esante all versions except ESe2	-----	-----	-----	-----	-----	-----
Esante ESe2	-----	-----	-----	-----	-----	-----
Flare	-----	-----	-----	-----	-----	-----
Flourish, Flourish II	-----	-----	-----	-----	-----	-----
Journey	<b>LS2</b> <sup>1</sup> SKU: SH00A2S	<b>LS7</b> <sup>1</sup> SKU: SH00A7S	-----	-----	-----	-----
Meridian, Meridian 2	<b>LS2</b> SKU: SH00A2S	<b>LS7</b> SKU: SH00A7S	<b>LS10</b> SKU: SH00A10S	<b>LS9</b> SKU: SH00A9S	-----	-----
Pathfinder	<b>LS2</b> SKU: SH00A2S	<b>LS7</b> SKU: SH00A7S	-----	-----	-----	-----
Radiance	<b>LS2</b> SKU: SH00A2S	<b>LS7</b> SKU: SH00A7S	<b>LS10</b> SKU: SH00A10S	<b>LS9</b> SKU: SH00A9S	<b>LS12</b> SKU: SH00A12S	<b>LS11</b> SKU: SH00A11S
Solaris Series	<b>LS2</b> SKU: SH00A2S	<b>LS7</b> SKU: SH00A7S	<b>LS10</b> SKU: SH00A10S	<b>LS9</b> SKU: SH00A9S	<b>LS12</b> <sup>2</sup> SKU: SH00A12S	<b>LS11</b> SKU: SH00A11S
Sophia	-----	-----	-----	-----	-----	-----
Spirit	<b>LS2</b> <sup>1</sup> SKU: SH00A2S	<b>LS7</b> <sup>1</sup> SKU: SH00A7S	-----	-----	-----	-----
Unity BLTY	<b>LS2</b> <sup>1</sup> SKU: SH00A2S	<b>LS7</b> <sup>1</sup> SKU: SH00A7S	-----	-----	-----	-----
Vesta	-----	-----	-----	-----	-----	-----

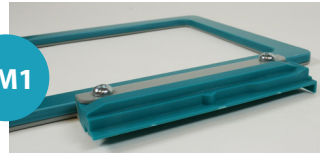
<sup>1</sup> with upgrade kit

<sup>2</sup> BLSA requires upgrade kit

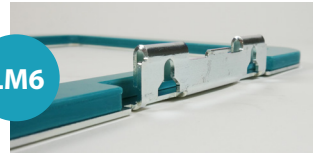
LM13



LM1



LM6



Single-Needle Machine Models	SNAP HOOP MONSTER				
	4" x 4"	5" x 7"	6" x 6"	6" x 10"	7" x 12"*
<b>AVENEER</b>					
Aveneer	<b>LM3</b> SKU: SH00A3M	<b>LM1</b> SKU: SH00A1M	<b>LM14</b> SKU: SH00A14M	<b>LM8</b> SKU: SH00A8M	<b>LM5</b> SKU: SH00A5M
<b>DESIGNIO</b>					
Designio DZ820E	-----	<b>LM6</b> SKU: SH00A6M	-----	-----	-----
<b>DUETTA</b>					
Duetta all versions	<b>LM3</b> SKU: SH00A3M	<b>LM1</b> SKU: SH00A1M	-----	<b>LM8</b> SKU: SH00A8M	<b>LM5</b> SKU: SH00A5M
<b>ESSENCE SERIES</b>					
Essence Innov-is VE2300	<b>LM3</b> SKU: SH00A3M	<b>LM1</b> SKU: SH00A1M	-----	<b>LM8</b> SKU: SH00A8M	<b>LM5</b> SKU: SH00A5M
Essence Innov-is VM5200	<b>LM3</b> SKU: SH00A3M	<b>LM1</b> SKU: SH00A1M	<b>LM14</b> SKU: SH00A14M	<b>LM8</b> SKU: SH00A8M	<b>LM5</b> SKU: SH00A5M
<b>INNOV-IS</b>					
Innov-is 1000, 1200	-----	<b>LM6</b> SKU: SH00A6M	-----	-----	-----
Innov-is 1500D, 2500D	<b>LM3</b> SKU: SH00A3M	<b>LM1</b> SKU: SH00A1M	-----	<b>LM8</b> SKU: SH00A8M	-----
Innov-is 4000D	<b>LM3</b> SKU: SH00A3M	<b>LM1</b> SKU: SH00A1M	<b>LM14</b> <sup>1</sup> SKU: SH00A14M	<b>LM8</b> SKU: SH00A8M	<b>LM5</b> SKU: SH00A5M
Innov-is PE400D, PE500, PE525, PE535, PE540, PE550	<b>LM13</b> SKU: SH00A13M	-----	-----	-----	-----
Innov-is PE700, PE700II, PE750D, PE770, PE780D, PE800, PE900	-----	<b>LM6</b> SKU: SH00A6M	-----	-----	-----
Innov-is SE270D, SE350, SE400, SE425, SE600, SE625, SE630	<b>LM13</b> SKU: SH00A13M	-----	-----	-----	-----
Innov-is SE1800, SE1900, SE2000	-----	<b>LM6</b> SKU: SH00A6M	-----	-----	-----
<b>INNOV-IS DREAM SERIES (Creator, Machine, Maker, Weaver)</b>					
Dream Creator XE Innov-is VM5100, Dream Creator2 XE Innov-is VM5100	<b>LM3</b> SKU: SH00A3M	<b>LM1</b> SKU: SH00A1M	<b>LM14</b> SKU: SH00A14M	<b>LM8</b> SKU: SH00A8M	<b>LM5</b> SKU: SH00A5M
THE Dream Machine 1 Innov-is V8500D	<b>LM3</b> SKU: SH00A3M	<b>LM1</b> SKU: SH00A1M	<b>LM14</b> SKU: SH00A14M	<b>LM8</b> SKU: SH00A8M	<b>LM5</b> SKU: SH00A5M
THE Dream Machine 2 Innov-is XV8550D	<b>LM3</b> SKU: SH00A3M	<b>LM1</b> SKU: SH00A1M	<b>LM14</b> SKU: SH00A14M	<b>LM8</b> SKU: SH00A8M	<b>LM5</b> SKU: SH00A5M
Dream Maker XE Innov-is VE2200	<b>LM3</b> SKU: SH00A3M	<b>LM1</b> SKU: SH00A1M	<b>LM14</b> SKU: SH00A14M	<b>LM8</b> SKU: SH00A8M	<b>LM5</b> SKU: SH00A5M
Dream Weaver XE Innov-is VM6200D	<b>LM3</b> SKU: SH00A3M	<b>LM1</b> SKU: SH00A1M	<b>LM14</b> SKU: SH00A14M	<b>LM8</b> SKU: SH00A8M	<b>LM5</b> SKU: SH00A5M
<b>INNOV-IS HE SERIES</b>					
HE-1, HE-120, HE-240	<b>LM13</b> SKU: SH00A13M	-----	-----	-----	-----

\* Due to magnet width restrictions, the LM5 sewing field is 6.69" x 12" 170 x 300mm - 10mm narrower than the standard 7" x 12" 180 x 300mm hoop.

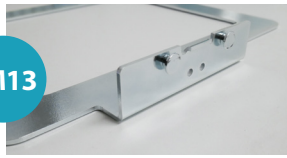
<sup>1</sup> with firmware update



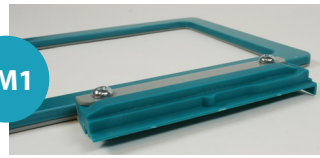
Single-Needle Machine Models	SNAP HOOP MONSTER					
	8" x 8"	8" x 12"	9.5" x 9.5"	9.5" x 14"	10 <sup>5</sup> / <sub>8</sub> " x 10 <sup>5</sup> / <sub>8</sub> "	10 <sup>5</sup> / <sub>8</sub> " x 16"
AVENEER						
Aveneer	<b>LM2</b> SKU: SH00A2M	<b>LM7</b> SKU: SH00A7M	<b>LM10</b> SKU: SH00A10M	<b>LM9</b> SKU: SH00A9M	<b>LM12</b> SKU: SH00A12M	<b>LM11</b> SKU: SH00A11M
DESIGNIO						
Designio DZ820E	-----	-----	-----	-----	-----	-----
DUETTA						
Duetta all versions	-----	-----	-----	-----	-----	-----
ESSENCE SERIES						
Essence Innov-is VE2300	<b>LM2</b> SKU: SH00A2M	<b>LM7</b> SKU: SH00A7M	-----	-----	-----	-----
Essence Innov-is VM5200	<b>LM2</b> SKU: SH00A2M	<b>LM7</b> SKU: SH00A7M	-----	-----	-----	-----
INNOV-IS						
Innov-is 1000, 1200	-----	-----	-----	-----	-----	-----
Innov-is 1500D, 2500D	-----	-----	-----	-----	-----	-----
Innov-is 4000D	-----	-----	-----	-----	-----	-----
Innov-is PE400D, PE500, PE525, PE535, PE540, PE550	-----	-----	-----	-----	-----	-----
Innov-is PE700, PE700II, PE750D, PE770, PE780D, PE800, PE900	-----	-----	-----	-----	-----	-----
Innov-is SE270D, SE350, SE400, SE425, SE600, SE625, SE630	-----	-----	-----	-----	-----	-----
Innov-is SE1800, SE1900, SE2000	-----	-----	-----	-----	-----	-----
INNOV-IS DREAM SERIES (Creator, Machine, Maker, Weaver)						
Dream Creator XE Innov-is VM5100, Dream Creator2 XE Innov-is VM5100	<b>LM2</b> <sup>2</sup> SKU: SH00A2M	<b>LM7</b> <sup>2</sup> SKU: SH00A7M	-----	-----	-----	-----
THE Dream Machine 1 Innov-is V8500D	<b>LM2</b> SKU: SH00A2M	<b>LM7</b> SKU: SH00A7M	-----	<b>LM9</b> SKU: SH00A9M	-----	-----
THE Dream Machine 2 Innov-is XV8550D	<b>LM2</b> SKU: SH00A2M	<b>LM7</b> SKU: SH00A7M	<b>LM10</b> SKU: SH00A10M	<b>LM9</b> SKU: SH00A9M	-----	-----
Dream Maker XE Innov-is VE2200	<b>LM2</b> <sup>2</sup> SKU: SH00A2M	<b>LM7</b> <sup>2</sup> SKU: SH00A7M	-----	-----	-----	-----
Dream Weaver XE Innov-is VM6200D	<b>LM2</b> <sup>2</sup> SKU: SH00A2M	<b>LM7</b> <sup>2</sup> SKU: SH00A7M	-----	-----	-----	-----
INNOV-IS HE SERIES						
HE-1, HE-120, HE-240	-----	-----	-----	-----	-----	-----

<sup>2</sup> with upgrade kit

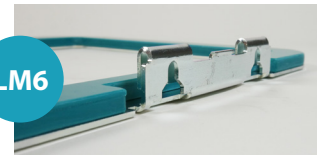
LM13



LM1



LM6



Single-Needle Machine Models	SNAP HOOP MONSTER				
	4" x 4"	5" x 7"	6" x 6"	6" x 10"	7" x 12"*
<b>INNOV-IS LIMITED EDITION</b>					
LB5000M, LB5000S, LB6770 PRW, LB6800, LB7000	<b>LM13</b> SKU: SH00A13M	-----	-----	-----	-----
Isodore Innov-is NV5000 Laura Ashley	<b>LM3</b> SKU: SH00A3M	<b>LM1</b> SKU: SH00A1M	-----	<b>LM8</b> SKU: SH00A8M	<b>LM5</b> SKU: SH00A5M
<b>INNOV-IS NS SERIES</b>					
Innov-is NS1150E, NS1250E, NS2750D, NS2850D	-----	<b>LM6</b> SKU: SH00A6M	-----	-----	-----
Innov-is NS1750, NS1850	<b>LM13</b> SKU: SH00A13M	-----	-----	-----	-----
<b>INNOV-IS NV SERIES</b>					
Innov-is NV2600, NV2800D	<b>LM3</b> SKU: SH00A3M	<b>LM1</b> SKU: SH00A1M	-----	<b>LM8</b> SKU: SH00A8M	-----
Innov-is NV500D, NV900D, NV950D, NV955, NV990D	<b>LM13</b> SKU: SH00A13M	-----	-----	-----	-----
Innov-is NV750E	-----	<b>LM6</b> SKU: SH00A6M	-----	-----	-----
<b>INNOV-IS NQ SERIES</b>					
NQ3500D	<b>LM3</b> SKU: SH00A3M	<b>LM1</b> SKU: SH00A1M	-----	<b>LM8</b> SKU: SH00A8M	-----
NQ1400E, NQ1600E, NQ1700E, NQ3600D, NQ3700D	<b>LM3</b> SKU: SH00A3M	<b>LM1</b> SKU: SH00A1M	<b>LM14</b> SKU: SH00A14M	<b>LM8</b> SKU: SH00A8M	-----
<b>LUMINAIRE</b>					
Luminaire Series	<b>LM3</b> SKU: SH00A3M	<b>LM1</b> SKU: SH00A1M	<b>LM14</b> SKU: SH00A14M	<b>LM8</b> SKU: SH00A8M	<b>LM5</b> SKU: SH00A5M
<b>PACESETTER</b>					
Pacesetter PC6500, PC8200, PC8500D	-----	<b>LM6</b> SKU: SH00A6M	-----	-----	-----
<b>QUATTRO</b>					
Quattro all versions	<b>LM3</b> SKU: SH00A3M	<b>LM1</b> SKU: SH00A1M	<b>LM14</b> SKU: SH00A14M	<b>LM8</b> SKU: SH00A8M	<b>LM5</b> SKU: SH00A5M
<b>SIMPLICITY</b>					
SB7500, SB7050E	<b>LM13</b> SKU: SH00A13M	-----	-----	-----	-----
SB7900E, SB8000	-----	<b>LM6</b> SKU: SH00A6M	-----	-----	-----
<b>STELLAIRE</b>					
Stellaire XE1 & XE2, XJ1 & XJ2	<b>LM3</b> SKU: SH00A3M	<b>LM1</b> SKU: SH00A1M	<b>LM14</b> SKU: SH00A14M	<b>LM8</b> SKU: SH00A8M	<b>LM5</b> SKU: SH00A5M

\* Due to magnet width restrictions, the LM5 sewing field is 6.69" x 12" 170 x 300mm - 10mm narrower than the standard 7" x 12" 180 x 300mm hoop.

<sup>1</sup> with firmware update

Single-Needle Machine Models	SNAP HOOP MONSTER					
	8" x 8"	8" x 12"	9.5" x 9.5"	9.5" x 14"	10 <sup>5</sup> / <sub>8</sub> " x 10 <sup>5</sup> / <sub>8</sub> "	10 <sup>5</sup> / <sub>8</sub> " x 16"
INNOV-IS LIMITED EDITION						
LB5000M, LB5000S, LB6770 PRW, LB6800, LB7000	-----	-----	-----	-----	-----	-----
Isodore Innov-is NV5000 Laura Ashley	-----	-----	-----	-----	-----	-----
INNOV-IS NS SERIES						
Innov-is NS1150E, NS1250E, NS2750D, NS2850D	-----	-----	-----	-----	-----	-----
Innov-is NS1750, NS1850	-----	-----	-----	-----	-----	-----
INNOV-IS NV SERIES						
Innov-is NV2600, NV2800D	-----	-----	-----	-----	-----	-----
Innov-is NV500D, NV900D, NV950D, NV955, NV990D	-----	-----	-----	-----	-----	-----
Innov-is NV750E	-----	-----	-----	-----	-----	-----
INNOV-IS NQ SERIES						
NQ3500D	-----	-----	-----	-----	-----	-----
NQ1400E, NQ1600E, NQ1700E, NQ3600D, NQ3700D	-----	-----	-----	-----	-----	-----
LUMINAIRE						
Luminaire Series	<b>LM2</b> SKU: SH00A2M	<b>LM7</b> SKU: SH00A7M	<b>LM10</b> SKU: SH00A10M	<b>LM9</b> SKU: SH00A9M	<b>LM12<sup>2</sup></b> SKU: SH00A12M	<b>LM11</b> SKU: SH00A11M
PACESETTER						
Pacesetter PC6500, PC8200, PC8500D	-----	-----	-----	-----	-----	-----
QUATTRO						
Quattro all versions	<b>LM2</b> SKU: SH00A2M	<b>LM7</b> SKU: SH00A7M	-----	-----	-----	-----
SIMPLICITY						
SB7500, SB7050E	-----	-----	-----	-----	-----	-----
SB7900E, SB8000	-----	-----	-----	-----	-----	-----
STELLAIRE						
Stellaire XE1 & XE2, XJ1 & XJ2	<b>LM2</b> SKU: SH00A2M	<b>LM7</b> SKU: SH00A7M	<b>LM10</b> SKU: SH00A10M	<b>LM9</b> SKU: SH00A9M	-----	-----

<sup>2</sup> Luminaire and Luminaire 2 XP2 require upgrade kit

Single-Needle Machine Models	STICKY HOOPS				
	4" x 4"	5" x 7"	6" x 6"	6" x 10"	7" x 12"*
AveneER					
AveneER	<b>LS3</b> SKU: SH00A3S	<b>LS1</b> SKU: SH00A1S	<b>LS14</b> SKU: SH00A14S	<b>LS8</b> SKU: SH00A8S	<b>LS5</b> SKU: SH00A5S
DESIGNIO					
Designio DZ820E	-----	<b>LS6</b> SKU: SH00A6S	-----	-----	-----
DUETTA					
Duetta all versions	<b>LS3</b> SKU: SH00A3S	<b>LS1</b> SKU: SH00A1S	-----	<b>LS8</b> SKU: SH00A8S	<b>LS5</b> SKU: SH00A5S
ESSENCE SERIES					
Essence Innov-is VE2300	<b>LS3</b> SKU: SH00A3S	<b>LS1</b> SKU: SH00A1S	-----	<b>LS8</b> SKU: SH00A8S	<b>LS5</b> SKU: SH00A5S
Essence Innov-is VM5200	<b>LS3</b> SKU: SH00A3S	<b>LS1</b> SKU: SH00A1S	<b>LS14</b> SKU: SH00A14S	<b>LS8</b> SKU: SH00A8S	<b>LS5</b> SKU: SH00A5S
INNOV-IS					
Innov-is 1000, 1200	-----	<b>LS6</b> SKU: SH00A6S	-----	-----	-----
Innov-is 1500D, 2500D	<b>LS3</b> SKU: SH00A3S	<b>LS1</b> SKU: SH00A1S	-----	<b>LS8</b> SKU: SH00A8S	-----
Innov-is 4000D	<b>LS3</b> SKU: SH00A3S	<b>LS1</b> SKU: SH00A1S	<b>LS14</b> <sup>1</sup> SKU: SH00A14S	<b>LS8</b> SKU: SH00A8S	<b>LS5</b> SKU: SH00A5S
Innov-is PE400D, PE500, PE525, PE535, PE540, PE550	<b>LS13</b> SKU: SH00A13S	-----	-----	-----	-----
Innov-is PE700, PE700II, PE750D, PE770, PE780D, PE800, PE900	-----	<b>LS6</b> SKU: SH00A6S	-----	-----	-----
Innov-is SE270D, SE350, SE400, SE425, SE600, SE625, SE630	<b>LS13</b> SKU: SH00A13S	-----	-----	-----	-----
Innov-is SE1800, SE1900, SE2000	-----	<b>LS6</b> SKU: SH00A6S	-----	-----	-----
INNOV-IS DREAM SERIES (Creator, Machine, Maker, Weaver)					
Dream Creator XE Innov-is VM5100, Dream Creator2 XE Innov-is VM5100	<b>LS3</b> SKU: SH00A3S	<b>LS1</b> SKU: SH00A1S	<b>LS14</b> SKU: SH00A14S	<b>LS8</b> SKU: SH00A8S	<b>LS5</b> SKU: SH00A5S
THE Dream Machine 1 Innov-is V8500D	<b>LS3</b> SKU: SH00A3S	<b>LS1</b> SKU: SH00A1S	<b>LS14</b> SKU: SH00A14S	<b>LS8</b> SKU: SH00A8S	<b>LS5</b> SKU: SH00A5S
THE Dream Machine 2 Innov-is XV8550D	<b>LS3</b> SKU: SH00A3S	<b>LS1</b> SKU: SH00A1S	<b>LS14</b> SKU: SH00A14S	<b>LS8</b> SKU: SH00A8S	<b>LS5</b> SKU: SH00A5S
Dream Maker XE Innov-is VE2200	<b>LS3</b> SKU: SH00A3S	<b>LS1</b> SKU: SH00A1S	<b>LS14</b> SKU: SH00A14S	<b>LS8</b> SKU: SH00A8S	<b>LS5</b> SKU: SH00A5S
Dream Weaver XE Innov-is VM6200D	<b>LS3</b> SKU: SH00A3S	<b>LS1</b> SKU: SH00A1S	<b>LS14</b> SKU: SH00A14S	<b>LS8</b> SKU: SH00A8S	<b>LS5</b> SKU: SH00A5S
INNOV-IS HE SERIES					
HE-1, HE-120, HE-240	<b>LS13</b> SKU: SH00A13S	-----	-----	-----	-----

\* Due to magnet width restrictions, the LM5 sewing field is 6.69" x 12" 170 x 300mm - 10mm narrower than the standard 7" x 12" 180 x 300mm hoop.

<sup>1</sup> with firmware update

Single-Needle Machine Models	STICKY HOOPS					
	8" x 8"	8" x 12"	9.5" x 9.5"	9.5" x 14"	10 <sup>5</sup> / <sub>8</sub> " x 10 <sup>5</sup> / <sub>8</sub> "	10 <sup>5</sup> / <sub>8</sub> " x 16"
AVENEER						
Aveneer	<b>LS2</b> SKU: SH00A2S	<b>LS7</b> SKU: SH00A7S	<b>LS10</b> SKU: SH00A10S	<b>LS9</b> SKU: SH00A9S	<b>LS12</b> SKU: SH00A12S	<b>LS11</b> SKU: SH00A11S
DESIGNIO						
Designio DZ820E	-----	-----	-----	-----	-----	-----
DUETTA						
Duetta all versions	-----	-----	-----	-----	-----	-----
ESSENCE SERIES						
Essence Innov-is VE2300	<b>LS2</b> SKU: SH00A2S	<b>LS7</b> SKU: SH00A7S	-----	-----	-----	-----
Essence Innov-is VM5200	<b>LS2</b> SKU: SH00A2S	<b>LS7</b> SKU: SH00A7S	-----	-----	-----	-----
INNOV-IS						
Innov-is 1000, 1200	-----	-----	-----	-----	-----	-----
Innov-is 1500D, 2500D	-----	-----	-----	-----	-----	-----
Innov-is 4000D	-----	-----	-----	-----	-----	-----
Innov-is PE400D, PE500, PE525, PE535, PE540, PE550	-----	-----	-----	-----	-----	-----
Innov-is PE700, PE700II, PE750D, PE770, PE780D, PE800, PE900	-----	-----	-----	-----	-----	-----
Innov-is SE270D, SE350, SE400, SE425, SE600, SE625, SE630	-----	-----	-----	-----	-----	-----
Innov-is SE1800, SE1900, SE2000	-----	-----	-----	-----	-----	-----
INNOV-IS DREAM SERIES (Creator, Machine, Maker, Weaver)						
Dream Creator XE Innov-is VM5100, Dream Creator2 XE Innov-is VM5100	<b>LS2</b> <sup>2</sup> SKU: SH00A2S	<b>LS7</b> <sup>2</sup> SKU: SH00A7S	-----	-----	-----	-----
THE Dream Machine 1 Innov-is V8500D	<b>LS2</b> SKU: SH00A2S	<b>LS7</b> SKU: SH00A7S	-----	<b>LS9</b> SKU: SH00A9S	-----	-----
THE Dream Machine 2 Innov-is XV8550D	<b>LS2</b> SKU: SH00A2S	<b>LS7</b> SKU: SH00A7S	<b>LS10</b> SKU: SH00A10S	<b>LS9</b> SKU: SH00A9S	-----	-----
Dream Maker XE Innov-is VE2200	<b>LS2</b> <sup>2</sup> SKU: SH00A2S	<b>LS7</b> <sup>2</sup> SKU: SH00A7S	-----	-----	-----	-----
Dream Weaver XE Innov-is VM6200D	<b>LS2</b> <sup>2</sup> SKU: SH00A2S	<b>LS7</b> <sup>2</sup> SKU: SH00A7S	-----	-----	-----	-----
INNOV-IS HE SERIES						
HE-1, HE-120, HE-240	-----	-----	-----	-----	-----	-----

<sup>2</sup> with upgrade kit

Single-Needle Machine Models	STICKY HOOPS				
	4" x 4"	5" x 7"	6" x 6"	6" x 10"	7" x 12"*
INNOV-IS LIMITED EDITION					
LB5000M, LB5000S, LB6770 PRW, LB6800, LB7000	<b>LS13</b> SKU: SH00A13S	-----	-----	-----	-----
Isodore Innov-is NV5000 Laura Ashley	<b>LS3</b> SKU: SH00A3S	<b>LS1</b> SKU: SH00A1S	-----	<b>LS8</b> SKU: SH00A8S	<b>LS5</b> SKU: SH00A5S
INNOV-IS NS SERIES					
Innov-is NS1150E, NS1250E, NS2750D, NS2850D	-----	<b>LS6</b> SKU: SH00A6S	-----	-----	-----
Innov-is NS1750, NS1850					
INNOV-IS NV SERIES					
Innov-is NV2600, NV2800D	<b>LS3</b> SKU: SH00A3S	<b>LS1</b> SKU: SH00A1S	-----	<b>LS8</b> SKU: SH00A8S	-----
Innov-is NV500D, NV900D, NV950D, NV955, NV990D	<b>LS13</b> SKU: SH00A13S	-----	-----	-----	-----
Innov-is NV750E	-----	<b>LS6</b> SKU: SH00A6S	-----	-----	-----
INNOV-IS NQ SERIES					
NQ3500D	<b>LS3</b> SKU: SH00A3S	<b>LS1</b> SKU: SH00A1S	-----	<b>LS8</b> SKU: SH00A8S	-----
NQ1400E, NQ1600E, NQ1700E, NQ3600D, NQ3700D	<b>LS3</b> SKU: SH00A3S	<b>LS1</b> SKU: SH00A1S	<b>LS14</b> SKU: SH00A14S	<b>LS8</b> SKU: SH00A8S	-----
LUMINAIRE					
Luminaire Series	<b>LS3</b> SKU: SH00A3S	<b>LS1</b> SKU: SH00A1S	<b>LS14</b> SKU: SH00A14S	<b>LS8</b> SKU: SH00A8S	<b>LS5</b> SKU: SH00A5S
PACESETTER					
Pacesetter PC6500, PC8200, PC8500D	-----	<b>LS6</b> SKU: SH00A6S	-----	-----	-----
QUATTRO					
Quattro all versions	<b>LS3</b> SKU: SH00A3S	<b>LS1</b> SKU: SH00A1S	<b>LS14</b> SKU: SH00A14S	<b>LS8</b> SKU: SH00A8S	<b>LS5</b> SKU: SH00A5S
SIMPLICITY					
SB7500, SB7050E	<b>LS13</b> SKU: SH00A13S	-----	-----	-----	-----
SB7900E, SB8000	-----	<b>LS6</b> SKU: SH00A6S	-----	-----	-----
STELLAIRE					
Stellaire XE1 & XE2, XJ1 & XJ2	<b>LS3</b> SKU: SH00A3S	<b>LS1</b> SKU: SH00A1S	<b>LS14</b> SKU: SH00A14S	<b>LS8</b> SKU: SH00A8S	<b>LS5</b> SKU: SH00A5S

\* Due to magnet width restrictions, the LM5 sewing field is 6.69" x 12" 170 x 300mm - 10mm narrower than the standard 7" x 12" 180 x 300mm hoop.

<sup>1</sup> with firmware update

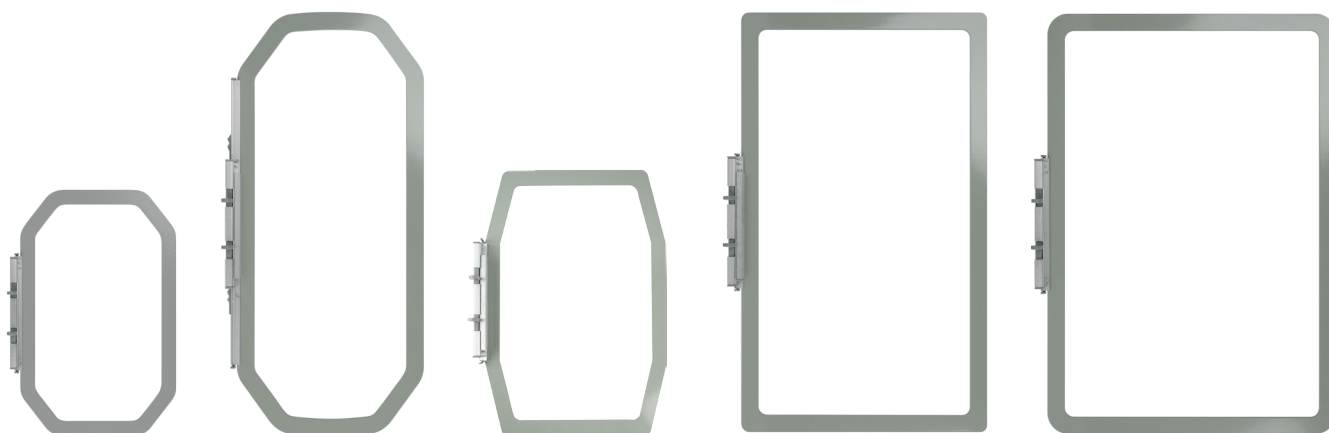
Single-Needle Machine Models	STICKY HOOPS					
	8" x 8"	8" x 12"	9.5" x 9.5"	9.5" x 14"	10 <sup>5</sup> / <sub>8</sub> " x 10 <sup>5</sup> / <sub>8</sub> "	10 <sup>5</sup> / <sub>8</sub> " x 16"
INNOV-IS LIMITED EDITION						
LB5000M, LB5000S, LB6770 PRW, LB6800, LB7000	-----	-----	-----	-----	-----	-----
Isodore Innov-is NV5000 Laura Ashley	-----	-----	-----	-----	-----	-----
INNOV-IS NS SERIES						
Innov-is NS1150E, NS1250E, NS2750D, NS2850D	-----	-----	-----	-----	-----	-----
Innov-is NS1750, NS1850						
INNOV-IS NV SERIES						
Innov-is NV2600, NV2800D	-----	-----	-----	-----	-----	-----
Innov-is NV500D, NV900D, NV950D, NV955, NV990D	-----	-----	-----	-----	-----	-----
Innov-is NV750E	-----	-----	-----	-----	-----	-----
INNOV-IS NQ SERIES						
NQ3500D	-----	-----	-----	-----	-----	-----
NQ1400E, NQ1600E, NQ1700E, NQ3600D, NQ3700D	-----	-----	-----	-----	-----	-----
LUMINAIRE						
Luminaire Series	<b>LS2</b> SKU: SH00A2S	<b>LS7</b> SKU: SH00A7S	<b>LS10</b> SKU: SH00A10S	<b>LS9</b> SKU: SH00A9S	<b>LS12<sup>2</sup></b> SKU: SH00A12S	<b>LS11</b> SKU: SH00A11S
PACESETTER						
Pacesetter PC6500, PC8200, PC8500D	-----	-----	-----	-----	-----	-----
QUATTRO						
Quattro all versions	<b>LS2</b> SKU: SH00A2S	<b>LS7</b> SKU: SH00A7S	-----	-----	-----	-----
SIMPLICITY						
SB7500, SB7050E	-----	-----	-----	-----	-----	-----
SB7900E, SB8000	-----	-----	-----	-----	-----	-----
STELLAIRE						
Stellaire XE1 & XE2, XJ1 & XJ2	<b>LS2</b> SKU: SH00A2S	<b>LS7</b> SKU: SH00A7S	<b>LS10</b> SKU: SH00A10S	<b>LS9</b> SKU: SH00A9S	-----	-----

<sup>2</sup> Luminaire and Luminaire 2 XP2 require upgrade kit

# BERNINA

made to create

Single-Needle Machine Models	SNAP HOOP MONSTER				
	145 x 255mm (LARGE OVAL)	150 x 400mm (MEGA HOOP)	165 x 265mm (MIDI HOOP)	210 x 400mm (MAXI HOOP)	260 x 400mm (JUMBO HOOP)
Artista: 200, 630, 640, 730 Aurora: 430, 440, 450	-----	<b>RM2</b> <sup>1</sup> SKU: SH00C2M	-----	-----	-----
5 Series: 500E, 535E, 540E, 570E, 590E	<b>RM1</b> SKU: SH00C1M	<b>RM3</b> <sup>1</sup> SKU: SH00C3M	<b>RM6</b> SKU: SH00C6M	-----	-----
7 Series: 700E, 720E, 735E, 750, 770, 780E, 790	<b>RM1</b> SKU: SH00C1M	<b>RM3</b> <sup>1</sup> SKU: SH00C3M	<b>RM6</b> <sup>2</sup> SKU: SH00C6M	<b>RM5</b> SKU: SH00C5M	-----
8 Series: 830, 830E, 880	<b>RM1</b> SKU: SH00C1M	<b>RM3</b> <sup>1</sup> SKU: SH00C3M	<b>RM6</b> <sup>3</sup> SKU: SH00C6M	-----	<b>RM4</b> SKU: SH00C4M



Single-Needle Machine Models	STICKY HOOPS				
	145 x 255mm (LARGE OVAL)	150 x 400mm (MEGA HOOP)	165 x 265mm (MIDI HOOP)	210 x 400mm (MAXI HOOP)	260 x 400mm (JUMBO HOOP)
Artista: 200, 630, 640, 730 Aurora: 430, 440, 450	-----	<b>RS2</b> <sup>1</sup> SKU: SH00C2S	-----	-----	-----
5 Series: 500E, 535E, 540E, 570E, 590E	<b>RS1</b> SKU: SH00C1S	<b>RS3</b> <sup>1</sup> SKU: SH00C3S	<b>RS6</b> SKU: SH00C6S	-----	-----
7 Series: 700E, 720E, 735E, 750, 770, 780E, 790	<b>RS1</b> SKU: SH00C1S	<b>RS3</b> <sup>1</sup> SKU: SH00C3S	<b>RS6</b> <sup>2</sup> SKU: SH00C6S	<b>RS5</b> SKU: SH00C5S	-----
8 Series: 830, 830E, 880	<b>RS1</b> SKU: SH00C1S	<b>RS3</b> <sup>1</sup> SKU: SH00C3S	<b>RS6</b> <sup>3</sup> SKU: SH00C6S	-----	<b>RS4</b> SKU: SH00C4S

<sup>1</sup> Repositionable

<sup>2</sup> 7 Series: 700E, 720E, 740E, 750QEE, 770QEE, 780E, 790E supported with firmware update

<sup>3</sup> 8 Series: 830E and 880E supported with firmware update

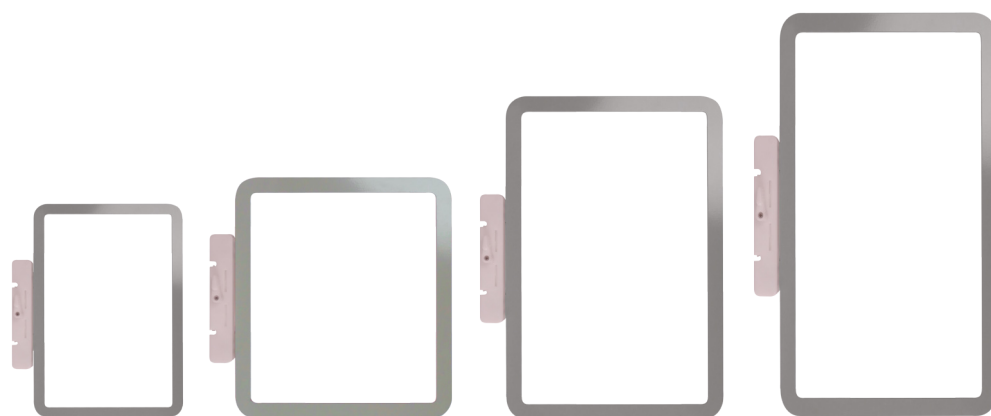




Single-Needle Machine Models	SNAP HOOP MONSTER				
	120 x 120mm	200 x 200mm	200 x 260mm	200 x 360mm	260 x 360mm
Designer Brilliance	<b>HM1</b> SKU: SH00D2M	<b>HM4</b> SKU: SH00D4M	<b>HM2</b> SKU: SH00D3M	<b>HM5</b> SKU: SH00D5M	-----
Designer Diamond Series, Royale & Deluxe	<b>HM1</b> SKU: SH00D2M	<b>HM4</b> SKU: SH00D4M	<b>HM2</b> SKU: SH00D3M	<b>HM5</b> SKU: SH00D5M	-----
Designer Epic, Epic 2	<b>HM1</b> SKU: SH00D2M	<b>HM4</b> SKU: SH00D4M	<b>HM2</b> SKU: SH00D3M	<b>HM5</b> SKU: SH00D5M	<b>HM6</b> SKU: SH00D6M
Designer Epic 3	-----	<b>HM4</b> SKU: SH00D4M	<b>HM2</b> SKU: SH00D3M	-----	-----
Designer Jade 35	<b>HM1</b> SKU: SH00D2M	-----	-----	-----	-----
Designer Ruby, Ruby Deluxe, Ruby Royale	<b>HM1</b> SKU: SH00D2M	<b>HM4</b> SKU: SH00D4M	<b>HM2</b> SKU: SH00D3M	<b>HM5</b> SKU: SH00D5M	-----
Designer Ruby 90	<b>HM1</b> SKU: SH00D2M	<b>HM4</b> SKU: SH00D4M	<b>HM2</b> SKU: SH00D3M	<b>HM5</b> SKU: SH00D5M	<b>HM6</b> SKU: SH00D6M
Designer Sapphire Series	<b>HM1</b> SKU: SH00D2M	<b>HM4</b> SKU: SH00D4M	<b>HM2</b> SKU: SH00D3M	<b>HM5</b> SKU: SH00D5M	-----
Designer Topaz 20, 30, 50	<b>HM1</b> SKU: SH00D2M	<b>HM4</b> SKU: SH00D4M	<b>HM2</b> SKU: SH00D3M	<b>HM5</b> SKU: SH00D5M	-----
Designer Topaz 25, 40	<b>HM1</b> SKU: SH00D2M	-----	-----	-----	-----

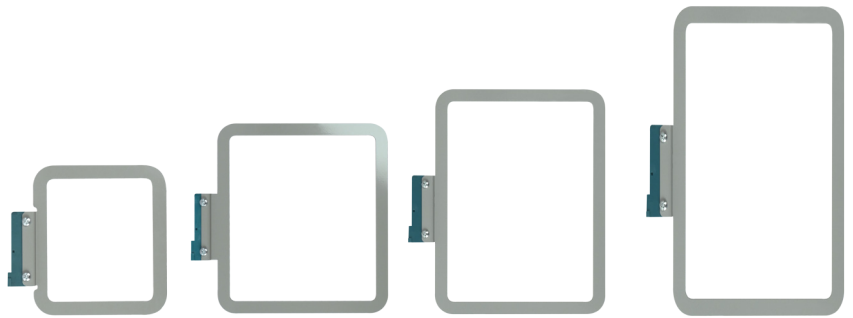
Single-Needle Machine Models	STICKY HOOPS			
	120 x 120mm	200 x 200mm	200 x 260mm	200 x 360mm
Designer Brilliance	<b>HS1</b> SKU: SH00D2S	<b>HS4</b> SKU: SH00D4S	<b>HS2</b> SKU: SH00D3S	<b>HS5</b> SKU: SH00D5S
Designer Diamond Series, Royale & Deluxe	<b>HS1</b> SKU: SH00D2S	<b>HS4</b> SKU: SH00D4S	<b>HS2</b> SKU: SH00D3S	<b>HS5</b> SKU: SH00D5S
Designer Epic, Epic 2	<b>HS1</b> SKU: SH00D2S	<b>HS4</b> SKU: SH00D4S	<b>HS2</b> SKU: SH00D3S	<b>HS5</b> SKU: SH00D5S
Designer Epic 3	-----	<b>HS4</b> SKU: SH00D4S	<b>HS2</b> SKU: SH00D3S	-----
Designer Jade 35	<b>HS1</b> SKU: SH00D2S	-----	-----	-----
Designer Ruby, Ruby Deluxe, Ruby Royale	<b>HS1</b> SKU: SH00D2S	<b>HS4</b> SKU: SH00D4S	<b>HS2</b> SKU: SH00D3S	<b>HS5</b> SKU: SH00D5S
Designer Ruby 90	<b>HS1</b> SKU: SH00D2S	<b>HS4</b> SKU: SH00D4S	<b>HS2</b> SKU: SH00D3S	<b>HS5</b> SKU: SH00D5S
Designer Sapphire Series	<b>HS1</b> SKU: SH00D2S	<b>HS4</b> SKU: SH00D4S	<b>HS2</b> SKU: SH00D3S	<b>HS5</b> SKU: SH00D5S
Designer Topaz 20, 30, 50	<b>HS1</b> SKU: SH00D2S	<b>HS4</b> SKU: SH00D4S	<b>HS2</b> SKU: SH00D3S	<b>HS5</b> SKU: SH00D5S
Designer Topaz 25, 40	<b>HS1</b> SKU: SH00D2S	-----	-----	-----

Single-Needle Machine Models	SNAP HOOP MONSTER						
	5" x 7"	5.5" x 7.9"	8" x 8"	8" x 11"	8" x 14"	11" x 11"	11" x 18.1"
Elna 830 Series	<b>JM1</b> SKU: SH00B1M	-----	<b>JM2</b> SKU: SH00B2M	<b>JM7</b> SKU: SH00B7M	-----	-----	-----
Elna 830L	<b>JM1</b> SKU: SH00B1M	-----	<b>JM2</b> SKU: SH00B2M	<b>JM7</b> SKU: SH00B7M	<b>JM8</b> SKU: SH00B8M	-----	-----
Janome 400e	<b>JM1</b> SKU: SH00B1M	-----	<b>JM2</b> SKU: SH00B2M	-----	-----	-----	-----
Janome 500E	<b>JM1</b> SKU: SH00B1M	-----	<b>JM2</b> SKU: SH00B2M	<b>JM7</b> SKU: SH00B7M	-----	-----	-----
Janome 550e	<b>JM1</b> SKU: SH00B1M	-----	<b>JM2</b> SKU: SH00B2M	<b>JM7</b> SKU: SH00B7M	<b>JM8</b> SKU: SH00B8M	-----	-----
Janome MC450e	<b>JM1</b> SKU: SH00B1M	-----	<b>JM2</b> SKU: SH00B2M	<b>JM7</b> SKU: SH00B7M	-----	-----	-----
Janome M17	-----	<b>JM9</b> SKU: SH00B9M	-----	-----	-----	<b>JM10</b> SKU: SH00B10M	<b>JM11</b> SKU: SH00B11M

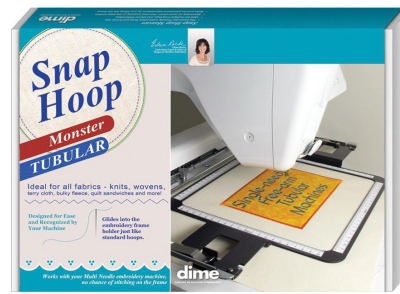


Single-Needle Machine Models	STICKY HOOPS						
	5" x 7"	5.5" x 7.9"	8" x 8"	8" x 11"	8" x 14"	11" x 11"	11" x 18.1"
Elna 830 Series	<b>JS1</b> SKU: SH00B1S	-----	<b>JS2</b> SKU: SH00B2S	<b>JS7</b> SKU: SH00B7S	-----	-----	-----
Elna 830L	<b>JS1</b> SKU: SH00B1S	-----	<b>JS2</b> SKU: SH00B2S	<b>JS7</b> SKU: SH00B7S	<b>JS8</b> SKU: SH00B8S	-----	-----
Janome 400e	<b>JS1</b> SKU: SH00B1S	-----	<b>JS2</b> SKU: SH00B2S	-----	-----	-----	-----
Janome 500E	<b>JS1</b> SKU: SH00B1S	-----	<b>JS2</b> SKU: SH00B2S	<b>JS7</b> SKU: SH00B7S	-----	-----	-----
Janome 550e	<b>JS1</b> SKU: SH00B1S	-----	<b>JS2</b> SKU: SH00B2S	<b>JS7</b> SKU: SH00B7S	<b>JS8</b> SKU: SH00B8S	-----	-----
Janome MC450e	<b>JS1</b> SKU: SH00B1S	-----	<b>JS2</b> SKU: SH00B2S	<b>JS7</b> SKU: SH00B7S	-----	-----	-----
Janome M17	-----	<b>JS9</b> SKU: SH00B9S	-----	-----	-----	<b>JS10</b> SKU: SH00B10S	<b>JS11</b> SKU: SH00B11S

Single-Needle Machine Models	SNAP HOOP MONSTER				
	120 x 120mm	200 x 200mm	200 x 260mm	200 x 360mm	260 x 360mm
Creative 1.5	<b>HM1</b> SKU: SH00D2M	-----	-----	-----	-----
Creative 2.0, 4.0, 4.5 5.0, 5.5	<b>HM1</b> SKU: SH00D2M	<b>HM4</b> SKU: SH00D4M	<b>HM2</b> SKU: SH00D3M	<b>HM5</b> SKU: SH00D5M	-----
Creative 3.0	<b>HM1</b> SKU: SH00D2M	<b>HM4</b> SKU: SH00D4M	<b>HM2</b> SKU: SH00D3M	-----	-----
Creative Icon, Creative Icon 2	<b>HM1</b> SKU: SH00D2M	<b>HM4</b> SKU: SH00D4M	<b>HM2</b> SKU: SH00D3M	<b>HM5</b> SKU: SH00D5M	<b>HM6</b> SKU: SH00D6M
Creative Performance	<b>HM1</b> SKU: SH00D2M	<b>HM4</b> SKU: SH00D4M	<b>HM2</b> SKU: SH00D3M	<b>HM5</b> SKU: SH00D5M	-----
Sensation, Sensation Pro, Sensation Pro 2	<b>HM1</b> SKU: SH00D2M	<b>HM4</b> SKU: SH00D4M	<b>HM2</b> SKU: SH00D3M	<b>HM5</b> SKU: SH00D5M	-----
Vision	<b>HM1</b> SKU: SH00D2M	<b>HM4</b> SKU: SH00D4M	<b>HM2</b> SKU: SH00D3M	<b>HM5</b> SKU: SH00D5M	-----



Single-Needle Machine Models	STICKY HOOPS			
	120 x 120mm	200 x 200mm	200 x 260mm	200 x 360mm
Creative 1.5	<b>HS1</b> SKU: SH00D2S	-----	-----	-----
Creative 2.0, 4.0, 4.5 5.0, 5.5	<b>HS1</b> SKU: SH00D2S	<b>HS4</b> SKU: SH00D4S	<b>HS2</b> SKU: SH00D3S	<b>HS5</b> SKU: SH00D5S
Creative 3.0	<b>HS1</b> SKU: SH00D2S	<b>HS4</b> SKU: SH00D4S	<b>HS2</b> SKU: SH00D3S	-----
Creative Icon, Creative Icon 2	<b>HS1</b> SKU: SH00D2S	<b>HS4</b> SKU: SH00D4S	<b>HS2</b> SKU: SH00D3S	<b>HS5</b> SKU: SH00D5S
Creative Performance	<b>HS1</b> SKU: SH00D2S	<b>HS4</b> SKU: SH00D4S	<b>HS2</b> SKU: SH00D3S	<b>HS5</b> SKU: SH00D5S
Sensation, Sensation Pro, Sensation Pro 2	<b>HS1</b> SKU: SH00D2S	<b>HS4</b> SKU: SH00D4S	<b>HS2</b> SKU: SH00D3S	<b>HS5</b> SKU: SH00D5S
Vision	<b>HS1</b> SKU: SH00D2S	<b>HS4</b> SKU: SH00D4S	<b>HS2</b> SKU: SH00D3S	<b>HS5</b> SKU: SH00D5S

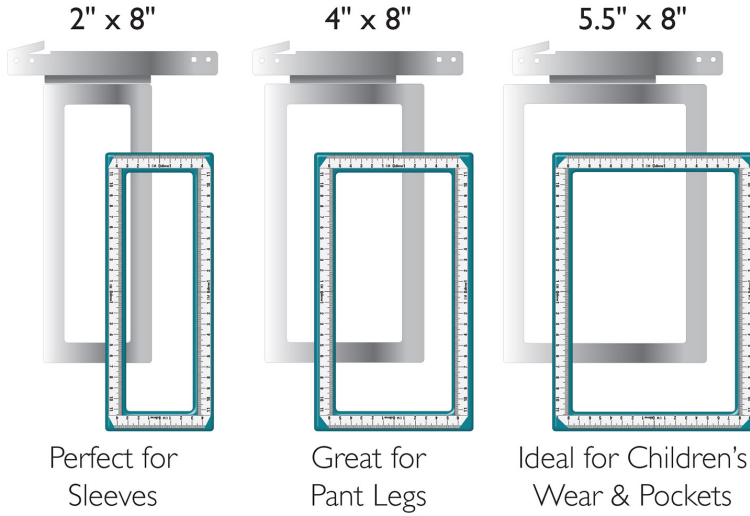


## SINGLE-NEEDLE TUBULAR & MULTI-NEEDLE MONSTER

	All models for use with Quick Snap frame set	4" x 4" (100 x 100mm)	5" x 7"	8" x 8"	8" x 12"	240 x 200mm
Baby Lock	Alliance-BNAL Single-Needle Tubular	<b>GM4</b> <sup>1</sup> SKU: MNM00A4	<b>GM1</b> <sup>1</sup> SKU: MNM00A1	<b>GM7</b> <sup>1</sup> SKU: MNM00A6	-----	-----
	Capella - Single Needle Tubular	<b>GM4</b> <sup>1</sup> SKU: MNM00A4	<b>GM1</b> <sup>1</sup> SKU: MNM00A1	<b>GM2</b> <sup>2</sup> SKU: MNM00A2	<b>GM3</b> <sup>1</sup> SKU: MNM00A5	-----
	Array - 6 Needle	<b>GM4</b> <sup>1</sup> SKU: MNM00A4	<b>GM1</b> <sup>1</sup> SKU: MNM00A1	<b>GM2</b> <sup>2</sup> SKU: MNM00A2	<b>GM3</b> <sup>1</sup> SKU: MNM00A5	-----
	BMP6, BMP8-10 EMP6, BND9, BND9-2, BMVT10, BMT6	<b>GM4</b> <sup>1</sup> SKU: MNM00A4	<b>GM1</b> <sup>1</sup> SKU: MNM00A1	-----	<b>GM3</b> <sup>1</sup> SKU: MNM00A5	-----
	Enterprise BNT10, BNT10L	<b>GM4</b> <sup>1</sup> SKU: MNM00A4	<b>GM1</b> <sup>1</sup> SKU: MNM00A1	<b>GM2</b> <sup>2</sup> SKU: MNM00A2	<b>GM3</b> <sup>1</sup> SKU: MNM00A5	-----
	Intrepid BMT6	<b>GM4</b> <sup>1</sup> SKU: MNM00A4	<b>GM1</b> <sup>1</sup> SKU: MNM00A1	<b>GM2</b> <sup>2</sup> SKU: MNM00A2	<b>GM3</b> <sup>1</sup> SKU: MNM00A5	-----
	Valiant BMV10	<b>GM4</b> <sup>1</sup> SKU: MNM00A4	<b>GM1</b> <sup>1</sup> SKU: MNM00A1	<b>GM2</b> <sup>2</sup> SKU: MNM00A2	<b>GM3</b> <sup>1</sup> SKU: MNM00A5	-----
	Venture MBVT10	<b>GM4</b> <sup>1</sup> SKU: MNM00A4	<b>GM1</b> <sup>1</sup> SKU: MNM00A1	<b>GM2</b> <sup>2</sup> SKU: MNM00A2	<b>GM3</b> <sup>1</sup> SKU: MNM00A5	-----
Brother	Persona-PRS100 Single-Needle Tubular	<b>GM4</b> <sup>1</sup> SKU: MNM00A4	<b>GM1</b> <sup>1</sup> SKU: MNM00A1	<b>GM7</b> <sup>1</sup> SKU: MNM00A6	-----	-----
	Entrepreneur One PR1-X	<b>GM4</b> <sup>1</sup> SKU: MNM00A4	<b>GM1</b> <sup>1</sup> SKU: MNM00A1	<b>GM2</b> <sup>2</sup> SKU: MNM00A2	<b>GM3</b> <sup>1</sup> SKU: MNM00A5	-----
	PR600, 600II, 600CII, 620, 650	<b>GM4</b> <sup>1</sup> SKU: MNM00A4	<b>GM1</b> <sup>1</sup> SKU: MNM00A1	-----	<b>GM3</b> <sup>1</sup> SKU: MNM00A5	-----
	PR655, 670, 680W	<b>GM4</b> <sup>1</sup> SKU: MNM00A4	<b>GM1</b> <sup>1</sup> SKU: MNM00A1	<b>GM2</b> <sup>2</sup> SKU: MNM00A2	<b>GM3</b> <sup>1</sup> SKU: MNM00A5	-----
	Entrepreneur Pro 1000, 1000e, X PR-1050x, PR-1055X	<b>GM4</b> <sup>1</sup> SKU: MNM00A4	<b>GM1</b> <sup>1</sup> SKU: MNM00A1	<b>GM2</b> <sup>2</sup> SKU: MNM00A2	<b>GM3</b> <sup>1</sup> SKU: MNM00A5	-----
Janome	MB4, MB7	<b>GM5</b> SKU: MNM00B1	-----	-----	-----	<b>GM6</b> SKU: MNM00B2
	Melco EP4	<b>GM5</b> SKU: MNM00B1	-----	-----	-----	<b>GM6</b> SKU: MNM00B2
	Elna Expressive 940, 970	<b>GM5</b> SKU: MNM00B1	-----	-----	-----	<b>GM6</b> SKU: MNM00B2
SWF	MAS-12	<b>GM8</b> SKU: MNM00E1	<b>GM9</b> SKU: MNM00E2	-----	<b>GM10</b> SKU: MNM00E3	-----

<sup>1</sup> use with frame holder A

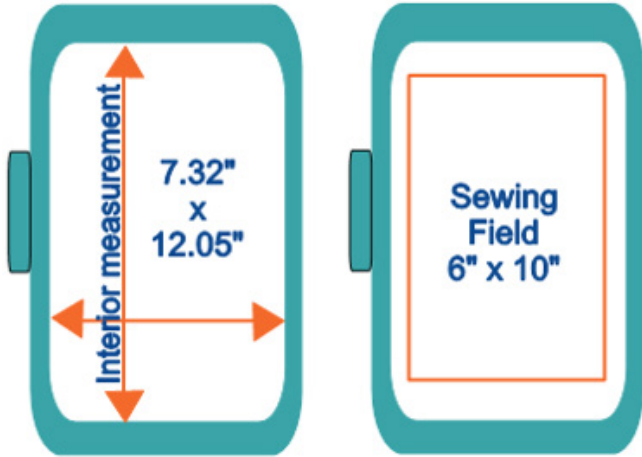
<sup>2</sup> use with frame holder B



Multi-Needle Machine Models		QUICK SNAP 2.0
		3 Easy on/Easy off Snap Hoop Monster frames
Baby Lock	All models for use with Quick Snap frame set	-----
	Alliance-BNAL Single Needle Tubular	-----
	Array - 6 Needle	-----
	BMP6, BMP8-10 EMP6, BND9, BND9-2, BMVT10, BMT6	SKU: QSBLB002
	Enterprise BNT10, BNT10L	SKU: QSBLB002
	Intrepid BMT6	SKU: QSBLB002
	Valiant BMV10	SKU: QSBLB002
	Venture MBVT10	SKU: QSBLB002
Brother	All models for use with Quick Snap frame set	-----
	Persona-PRS100 Single Needle Tubular	-----
	PR600, 600II, 600CII, 620, 650, 655, 670, 680W	SKU: QSBLB002
	Entrepreneur Pro 1000, 1000e, X PR-1050x, PR-1055X	SKU: QSBLB002

# Hoop Size Chart

LM8 SH00A8M  
Baby Lock Brother 6" x 10"



Example

Not sure what Snap Hoop Monster you own?  
Just measure the hoop interior space and use  
this handy chart to identify your hoop.



FOR THE LOVE OF SEWING



SINGLE-NEEDLE SNAP HOOP MONSTER			Interior Measurement			
			mm	mm	inches	inches
SKU	Description & Sewing Field	Width	Length	Width	Length	
LM13	SH00A13M Babylock/Brother 4" x 4" Basic Actual: 3.94" x 3.94" or 100x100mm	125.22	155	4.93	6.10	
LM3	SH00A3M Babylock/Brother 4" x 4" Actual: 3.94" x 3.94" or 100x100mm	125.22	155	4.93	6.10	
LM1	SH00A1M Babylock/Brother 5" x 7" Actual: 5.12" x 7.09" or 130x180mm	154.9	225	6.10	8.86	
LM6	SH00A6M Babylock/Brother 5" x 7" w clamp down Actual: 5.12" x 7.09" or 130x180mm	156.4	218	6.16	8.58	
LM14	SH00A14M Babylock/Brother 6" x 6" Actual: 5.91" x 5.91" or 150x150mm	174.75	196	6.88	7.72	
LM8	SH00A8M Babylock/Brother 6" x 10" Actual: 5.91" x 10" or 150x255mm	186.01	306	7.32	12.05	
LM5	SH00A5M Babylock/Brother 7" x 12" Actual: 7.09" x 11.81" or 130x300mm	200.08	350	7.88	13.78	
LM2	SH00A2M Babylock/Brother 8" x 8" Actual: 7.87" x 7.87" or 200x200mm	224.94	255	8.86	10.04	
LM7	SH00A7M Babylock/Brother 8" x 12" Actual: 7.87" x 11.81" or 200x300mm	225.43	355	8.88	13.98	
LM10	SH00A10M Babylock/Brother 9.5" x 9.5" Actual: same or 240x240mm	284	268	11.18	10.55	
LM9	SH00A9M Babylock/Brother 9.5" x 14" Actual: 9.45 x 13.98" or 240x355mm	292.58	437	10.61	17.20	
LM12	SH00A12M Babylock/Brother 10 5/8" x 10 5/8" Actual: same or 272x272mm	292.69	333	11.52	13.11	
LM11	SH00A11M Babylock/Brother 10 5/8" x 16" Actual: same or 272x408mm	304.75	473	12.00	18.62	

SINGLE-NEEDLE SNAP HOOP MONSTER			Interior Measurement			
			mm	mm	inches	inches
	SKU	Description & Sewing Field	Width	Length	Width	Length
JM1	SH00B1M	Janome 5" x 7" Actual: 5.12" x 7.09" or 130x180mm	154.9	225	6.10	8.86
JM9	SH00B9M	Janome 5.5" x 7.9" Actual: same or 140x200mm	170	245	6.69	9.65
JM2	SH00B2M	Janome 8" x 8" Actual: 7.87" x 7.87" or 200x200mm	224.94	255	8.86	10.04
JM7	SH00B7M	Janome 8" x 11" Actual: 7.87" x 11" or 200x280mm	225.43	355	8.88	13.98
JM8	SH00B8M	Janome 8" x 14" Actual: 7.87" x 13.98" or 200x355mm	232.68	410	9.16	16.14
JM10	SH00B10M	Janome 11" x 11" Actual: same or 280x280mm	309	325	12.17	12.80
JM11	SH00B11M	Janome 11" x 18.1" Actual: same or 280x460mm	309	506	12.17	19.92
HM1	SH00D2M	Snap Hoop Monster Pfaff/Viking 120x120mm	145.26	170	5.72	6.69
HM4	SH00D4M	Snap Hoop Monster Pfaff/Viking 200x200mm	244.94	255	9.64	10.04
HM5	SH00D5M	Snap Hoop Monster Pfaff/Viking 200x360mm	232.68	410	9.16	16.14
HM2	SH00D3M	Snap Hoop Monster Pfaff/Viking 260x200mm	224.86	310	8.85	12.20
HM6	SH00D6M	Snap Hoop Monster Pfaff/Viking 260x360mm	284.16	398.46	11.1875	15.6875
RM1	SH00C1M	Snap Hoop Monster Bernina 145x255mm large oval	161.92	277.81	6.375	10.3125
RM2	SH00C2M	Snap Hoop Monster Bernina 150x400 Mega hoop Artista	169.7	430	6.68	16.93
RM3	SH00C3M	Snap Hoop Monster Bernina 150x400 Mega hoop	169.7	430	6.68	16.93
RM5	SH00C5M	Snap Hoop Monster Bernina 210x400mm Maxi hoop	233.4	425	9.19	16.73
RM4	SH00C4M	Snap Hoop Monster Bernina 260x400mm Jumbo hoop	279.26	427	10.99	16.81
RM6	SH00C6M	Snap Hoop Monster Bernina 265x165mm Midi hoop	190.22	295	7.49	11.61

MULTI NEEDLE SNAP HOOP MONSTER			Interior Measurement			
			mm	mm	inches	inches
	SKU	Description & Sewing Field	Width	Length	Width	Length
GM4	MNM00A4	Babylock/Brother 4" x 4" Actual: 3.94" x 3.94" or 100x100mm	125.22	155	4.93	6.10
GM1	MNM00A1	Babylock/Brother 5" x 7" Actual: 5.12" x 7.09" or 130x180mm	154.9	225	6.1	8.86
GM2	MNM00A2	Babylock/Brother 8" x 8" Actual: 7.87" x 7.87" or 200x200mm	224.94	255	8.86	10.04
GM3	MNM00A5	Babylock/Brother 8" x 12" Actual: 7.87" x 11.81" or 200x300mm	219.76	331	8.65	13.03
GM7	MNM00A6	Persona/Alliance 8" x 8" Actual: 7.87" x 7.87" or 200x200mm	224.94	255	8.86	10.04
GM5	MNM00B1	Janome 100x100 Actual: 3.94" x 3.94" or 100x100mm	125.22	155	4.93	6.10
GM6	MNM00B2	Janome 240x200 Actual: 9.45" x 7.87" or 240x200mm	199.99	298	7.87	11.73