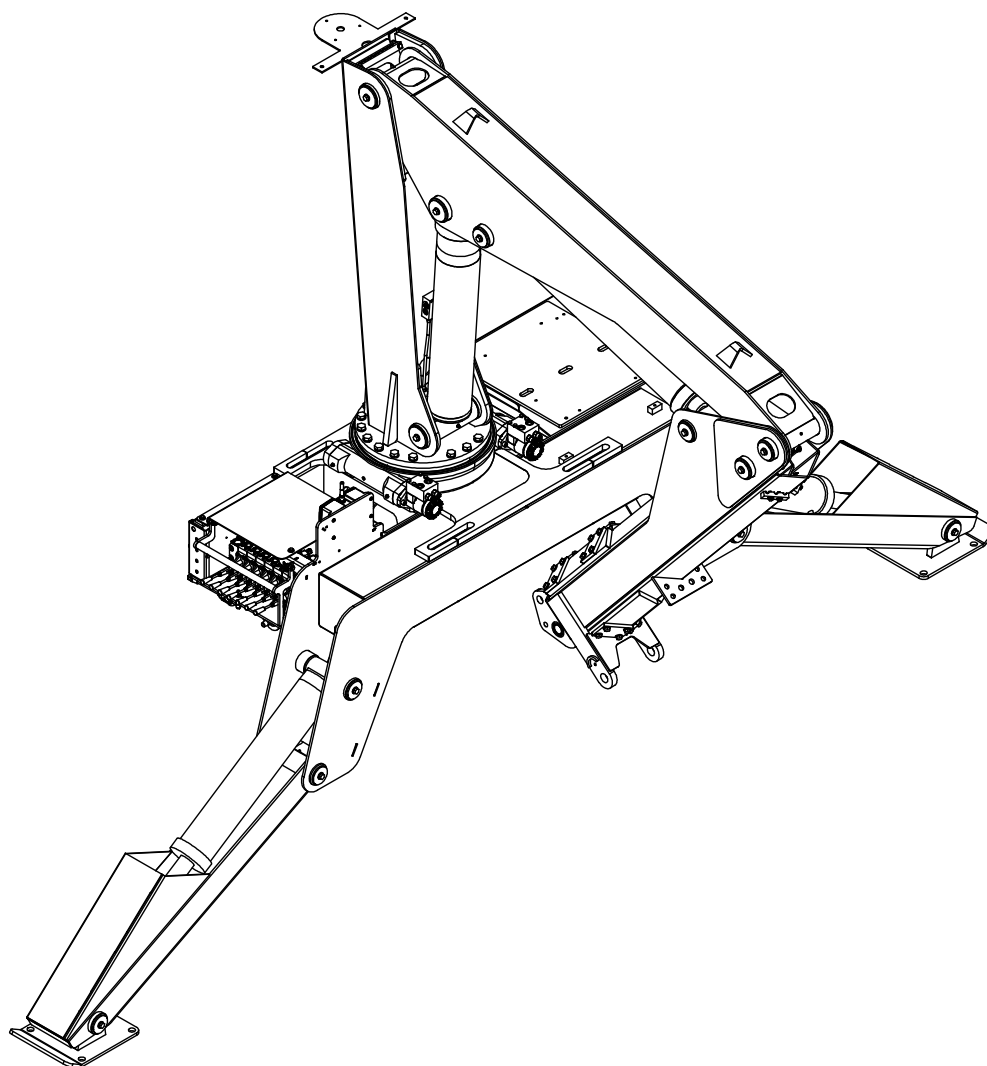




Model 9000 Articulating Crane Owner's Manual

Installation • Assembly Drawings • Parts



**Notice: A copy of this manual must remain with the equipment at all times.
For a printable download copy, please visit: www.stellarindustries.com**

Stellar Industries, Inc.

190 State Street

PO Box 169

Garner, IA 50438

800-321-3741

Fax: 641-923-2811

www.stellarindustries.com

Subject to Change without Notification.
© 2024 Stellar Industries, Inc.

Rev 5
PN 37811

Serial Tag Location / P65 Warning

WARNING

Operating, maintaining, and servicing a Stellar product may expose you to chemicals including, but not limited to, engine exhaust, carbon monoxide, phthalates, and lead. These chemicals are known to the State of California to cause cancer and birth defects (or other reproductive harm). To keep your exposure to a minimum, be sure to avoid breathing exhaust and service your Stellar product in a well-ventilated area while wearing gloves or washing your hands frequently. For more information, go to www.P65Warnings.ca.gov/passenger-vehicle.



www.p65warnings.ca.gov

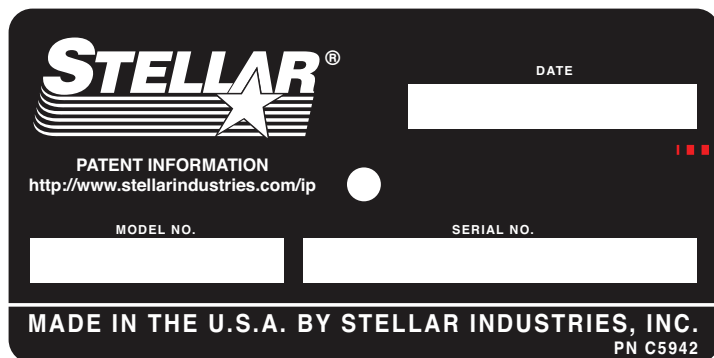
NOTICE

Cold Weather Performance

Although clear data on cold weather performance from every steel manufacturer is not available for all types and thicknesses of steel, Stellar Industries is confident that the weldments on our products will operate to 100% of their intended purpose to temperatures down to -40° F / C.

It is recommended if Stellar manufactured equipment needs to be used in temperatures below -40° F / C, the operator should pull the unit into a climate-controlled area and allow the weldments to warm up to and then maintain a temperature above this level.

Serial Tag Location



STELLAR[®]

DATE

PATENT INFORMATION
<http://www.stellarindustries.com/ip>

MODEL NO. SERIAL NO.

MADE IN THE U.S.A. BY STELLAR INDUSTRIES, INC.
PN C5942

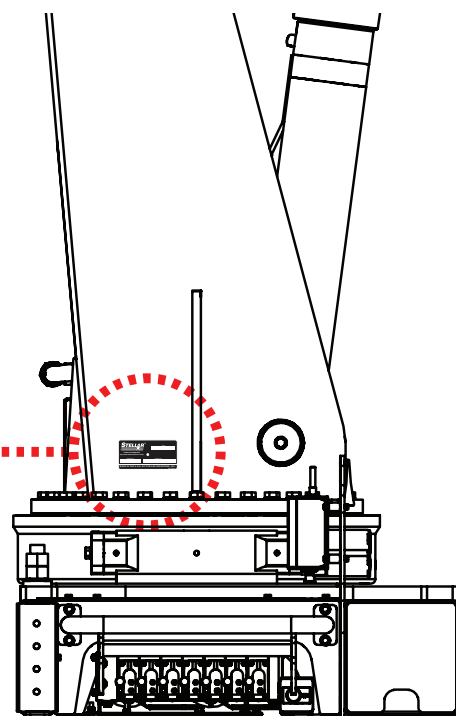


Table of Contents

Introduction	v
Chapter 1 - Specifications	1
Model 9000 Specifications	2
Capacity Chart - Decal PN 64835	3
Chapter 2 - Installation	5
General Installation	6
Installer Notice	6
Installation Overview	6
Torque Data Chart	7
Mounting Kit - PN 61405	8
Mounting Kit - PN 61405 Parts List	9
Hydraulic Pressure Settings	10
Face Seal/O-Ring Size Chart	10
Hydraulic Installation	11
Main Hydraulic Kit - PN 134267	12
Control Kit (900 MHz Version) - PN 92662	14
Control Kit (900 MHz Version) - PN 92662 Parts List	15
Control Kit (434 MHz Version) - PN 92663	16
Control Kit (434 MHz Version) - PN 92663 Parts List	17
Grease Kit - PN 61641	18
Grease Kit - PN 61641 Parts List	19
Decal Placement - PN 30488	20
Chapter 3 - Assembly Drawings	21
Base Asm 9000 - PN 134262	22
Base Asm 9000 - PN 134262 Parts List	23
Base Asm 9000 - PN 134262 Parts List	24
Base Asm 9000 Rear MNT RH Drive - PN 134272	26
Base Asm 9000 Rear MNT RH Drive - PN 134272 Parts	27
Base Asm 9000 Rear MNT RH Drive - PN 134272 Parts	28
Gear Bearing - PN 134007	30
Valve Bank - PN 51658	31
Stabilizer Valve Bank - PN 61642	32
Valve Assembly - PN 66286	33
Mast Assembly - PN 29350	34
Mast Assembly - PN 29350 Parts List	35
Main Cylinder Assembly - PN 29352	36
Main Cylinder Assembly - PN 29352 Parts List	37
Main Boom Assembly - PN 29354	38
Main Boom Assembly - PN 29354 Parts List	39
Cylinder Assembly - PN 29356	40
Cylinder Assembly - PN 29356 Parts List	41
Extension Boom Assembly - PN 61204	42
Extension Boom Assembly - PN 61204	43
Extension Cylinder Assembly - PN 73499	44
Extension Cylinder Assembly - PN 73499 Parts List	45
Stabilizer Assembly - PN 61089	46
Stabilizer Assembly - PN 61089 Parts List	47
Reservoir Assembly - PN 100786	48
Reservoir Assembly - PN 100786 Parts List	49
Optional 6.7 Ton Hook Kit - PN 128833	50
Optional 6.7 Ton Hook Kit - PN 128833 Parts List	51
Compressor Mounting - PN 134013	52
Compressor Mounting - PN 134013 Parts List	53
Cooler Assembly - PN 86510	54
Cooler Assembly - PN 86510 Parts List	55
Radio Transmitter - PN 89149/93084	56

Table of Contents

Transmitter Docking Station Asm (Opt.) - PN 9733458
Transmitter Docking Station (Opt.) - PN 97334 Parts List59
Wiring Diagram Docking Station - PN 65989.....60

Introduction

A copy of this manual is provided with every crane and can be found in the hard plastic manual case that is installed on the chassis. A copy of this manual shall remain with the crane at all times.

Throughout the manual, three signal words will be used to bring attention to important items:

NOTICE

A **NOTICE** signal word indicates a practice not related to physical injury.

WARNING

A **WARNING** signal word indicates a hazardous situation which, if not avoided, could result in death or serious injury.

DANGER

A **DANGER** signal word indicates a hazardous situation which, if not avoided, will result in death or serious injury.

Information contained within this manual does not cover operation, maintenance, or troubleshooting. Please refer to the Large OTR Crane Manual for details on these items.

This manual is not binding. Stellar Industries, Inc. reserves the right to change, at any time, any or all of the items, components, and parts deemed necessary for product improvement or commercial/production purposes. This right is kept with no requirement or obligation for immediate mandatory updating of this manual.

If more information is required or technical assistance is needed, or if you feel that any part of this manual is unclear or incorrect, please contact the Stellar Customer Service Department by phone at 800-321-3741 or email at service@stellarindustries.com.

**For Technical Questions, Information, Parts, or Warranty, Call Toll-Free at
800-321-3741**

Hours: Monday - Friday, 8:00 a.m. - 5:00 p.m. CST

Or email at the following addresses:

Technical Questions, and Information

service@stellarindustries.com

Order Parts

parts@stellarindustries.com

Warranty Information

warranty@stellarindustries.com

This page left intentionally blank.

Chapter 1 - Specifications

CHAPTER CONTENTS

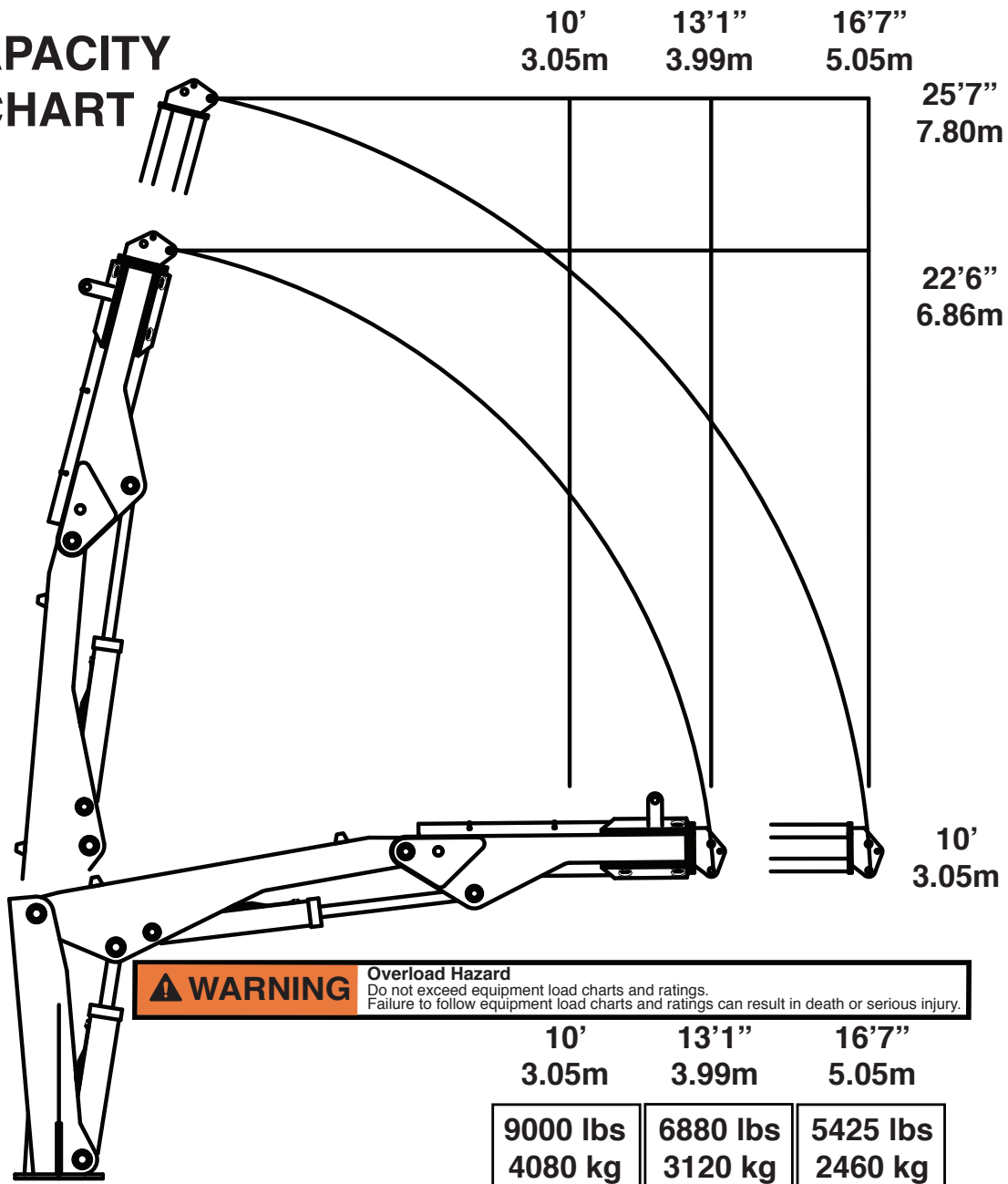
Model 9000 Specifications	2
Capacity Chart - Decal PN 64835	3

Model 9000 Specifications

SPECIFICATIONS SHEET- MODEL 9000 CRANE	
CRANE RATING:	90,000 FT-LB (12.44 tm)
STANDARD BOOM LENGTH:	13' (3.99 m) FROM CL OF CRANE
BOOM EXTENSION:	HYDRAULIC 41" (104 cm)
MAXIMUM HORIZONTAL REACH:	16'7" (5.05 m) FROM CL OF CRANE
MAXIMUM VERTICAL LIFT:	22'3" (6.78 m) FROM TRUCK FRAME
STOWED HEIGHT:	85" (216 cm)
MOUNTING SPACE REQUIRED:	42" (107 cm)
APPROXIMATE SHIPPING WEIGHT:	4,875 LB (2211 kg)
CONTROLS:	PROPORTIONAL RADIO CONTROLS STANDARD FOR ALL FUNCTIONS
CYLINDER SPECIFICATIONS:	
INNER LIFT CYLINDER:	6" (15.24 cm) BORE WITH INTEGRAL PILOT OPERATED COUNTERBALANCE VALVES.
OUTER LEFT CYLINDER:	5" (12.7 cm) BORE WITH INTEGRAL PILOT OPERATED COUNTERBALANCE VALVES.
EXTENSION CYLINDER:	3.5" (8.89 cm) BORE WITH INTEGRAL PILOT OPERATED COUNTERBALANCE VALVES.
ROTATION:	290 DEGREE POWER (WORM GEAR)
LIFTING CAPACITIES:	9,000 LB @ 10' (4080 kg @ 3.03 m) 5,425 LB @ 16'7" (2460kg @ 5.05 m)
POWER SUPPLY REQUIRED:	PTO & PUMP
	(12 GPM @ 3,000 PSI)
	(45.4 Lpm @ 206 Bar)
CHASSIS RBM	1,080,000 IN-LB

Capacity Chart - Decal PN 64835

CAPACITY CHART



WARNING Overload Hazard
Do not exceed equipment load charts and ratings.
Failure to follow equipment load charts and ratings can result in death or serious injury.



0'
0m
CRANE

GROUND 0'
0m

190 STATE STREET GARNER, IA 50438
PHONE: (800) 321-3741 FAX: (641) 923-2812 64835 - Rev A

THIS PAGE INTENTIONALLY LEFT BLANK.

Chapter 2 - Installation

CHAPTER CONTENTS

General Installation	6
Installer Notice.....	6
Installation Overview	6
Torque Data Chart.....	7
Mounting Kit - PN 61405.....	8
Mounting Kit - PN 61405 Parts List.....	9
Hydraulic Pressure Settings.....	10
Face Seal/O-Ring Size Chart.....	10
Hydraulic Installation.....	11
Main Hydraulic Kit - PN 134267.....	12
Control Kit (900 MHz Version) - PN 92662.....	14
Control Kit (900 MHz Version) - PN 92662 Parts List.....	15
Control Kit (434 MHz Version) - PN 92663.....	16
Control Kit (434 MHz Version) - PN 92663 Parts List.....	17
Grease Kit - PN 61641.....	18
Grease Kit - PN 61641 Parts List.....	19
Decal Placement - PN 30488.....	20

General Installation

This chapter is designed to serve as a general guide for the installation of a Stellar 9000 Crane on a Stellar Service Body. Each installation is considered unique so certain portions of this chapter may or may not apply to your direct application. If a question should arise during the installation process, please contact Stellar Customer Service at (800) 321 3741.

This crane is designed for use with a Stellar Service Body installed on a vehicle that meets the minimum chassis requirements of the crane. It is the installer's responsibility to assure that the crane is mounted on a platform that will support the maximum crane rating of this crane.

⚠ WARNING Do not install this crane on a body not capable of handling the loads imposed on it. Failure to do so may result in serious injury or death.

NOTICE When installing welder units to the service bodies, it is highly recommended that a surge protector is installed on the chassis batteries to protect the crane radio receiver, wiring and other electronic devices from an unexpected electrical spike or surge. Failure to do so could result in extensive damage to the service body and crane electrical circuit.

Installer Notice

According to Federal Law (49 cfr part 571), each final-stage manufacturer shall complete the vehicle in such a manner that it conforms to the standards in effect on the date of manufacture of the incomplete vehicle, the date of final completion, or a date between those two dates. This requirement shall, however, be superseded by any conflicting provisions of a standard that applies by its terms to vehicles manufactured in two or more stages.

Therefore, the installer of Stellar® Cranes and Bodies is considered one of the manufacturers of the vehicle. As such a manufacturer, the installer is responsible for compliance with all applicable federal and state regulations. They are required to certify that the vehicle is in compliance with the Federal Motor Vehicle Safety Standards and other regulations issued under the National Traffic and Motor Vehicle Safety Act.

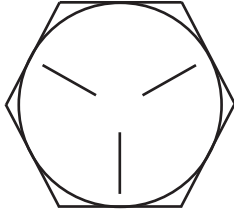
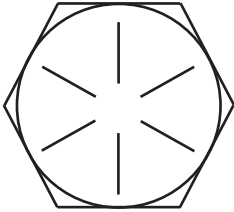
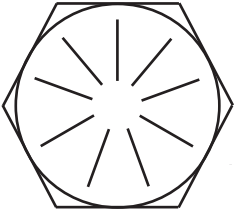
Please reference the Code of Federal Regulations, title 49 - Transportation, Volume 5 (400-999), for further information, or visit <http://www.gpoaccess.gov/nara/index.html> for the full text of Code of Federal Regulations.

Installation Overview

1. Locate mounting brackets and clamp to chassis. Consider the clearance between the cab/body and crane.
2. Set crane on chassis and check for interferences.
3. Using mounting bracket as a guide, mark holes to be drilled into truck frame.
4. Remove mounting brackets and drill holes.
5. Mount brackets using specified size Grade 8 bolts, flast washers, and nyloc nuts.
6. Lower crane onto mounting brackets.
7. Mount crane using specified size Grade 8 bolts, flat washers, and nyloc nuts.
8. Connect pressure and return lines per hydraulic kit.
9. Connect (+12V) Power and ground wires inside crane box.
10. Check reservoir for oil and fill if necessary.
11. Operate crane several cycles.

SEE APPROPRIATE MOUNTING KIT DRAWINGS.

Torque Data Chart

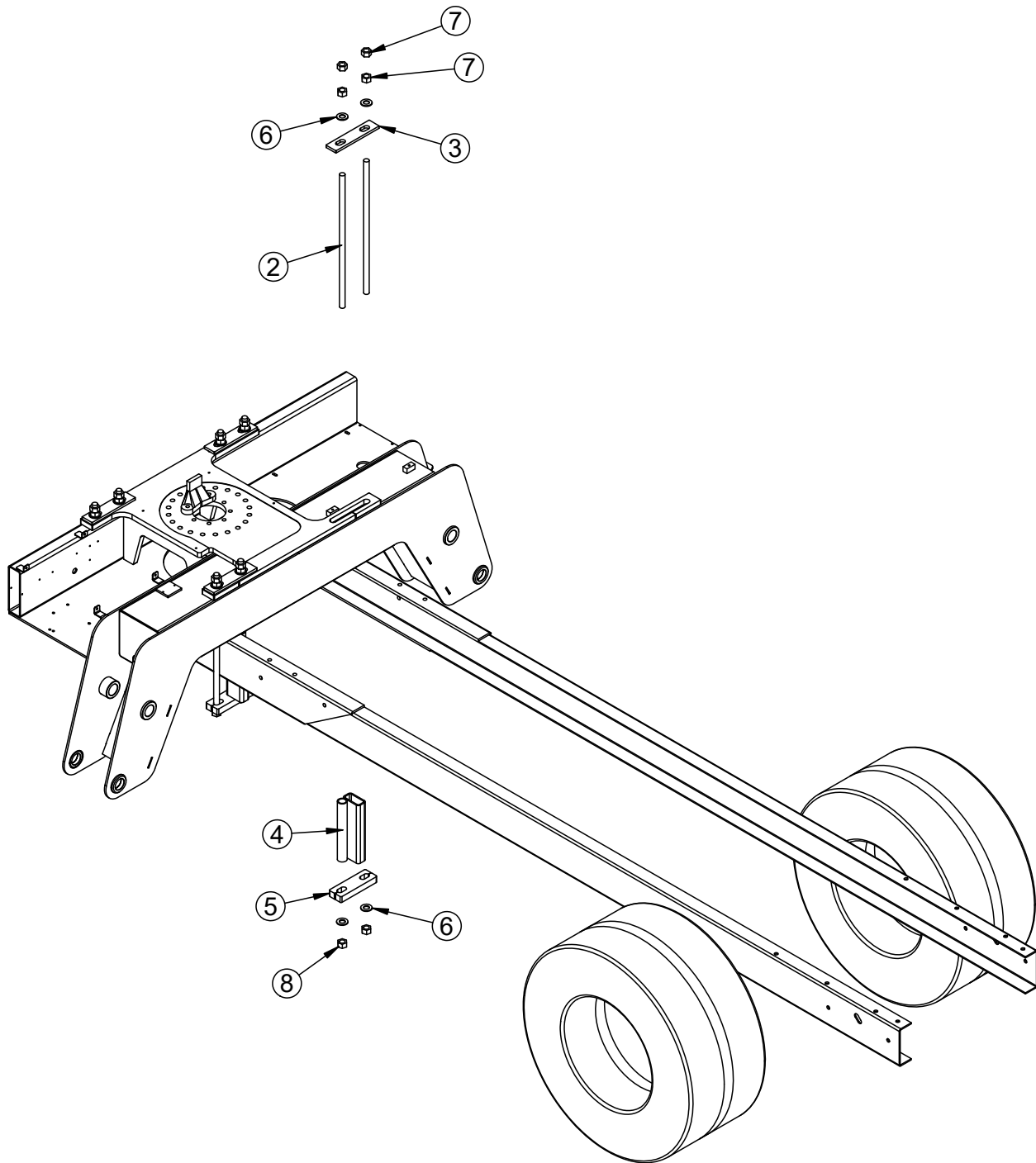
		GRADE 5		GRADE 8		GRADE 9
						
SIZE (DIA-TPI)	BOLT DIA (INCHES)	PLAIN (FT-LB)	PLATED (FT-LB)	PLAIN (FT-LB)	PLATED (FT-LB)	PLATED (FT-LB)
5/16-18	0.3125	17	13	25	18	22
3/8-16	0.3750	31	23	44	33	39
7/16-14	0.4375	49	37	70	52	63
1/2-13	0.5000	75	57	105	80	96
9/16-12	0.5625	110	82	155	115	139
5/8-11	0.6250	150	115	220	160	192
3/4-10	0.7500	265	200	375	280	340
7/8-9	0.8750	395	295	605	455	549
1-8	1.000	590	445	910	680	823
1 1/8-7	1.1250	795	595	1290	965	1167
1 1/4-7	1.2500	1120	840	1815	1360	1646
1 3/8-6	1.3750	1470	1100	2380	1780	2158
1 1/2-6	1.500	1950	1460	3160	2370	2865

NOTE:

When using the torque data in the chart, the following rules should be observed:

- Bolt manufacturer’s particular specifications should be consulted when provided.
- Flat washers of equal strength must be used.
- All torque measurements are given in foot-pounds. To convert to inch-pounds, multiply by 12.
- Torque values specified are for bolts with residual oils or no special lubricants applied.
- Torque values for socket-head capscrews are the same as for grade 8 capscrews.
- Do not use these values if a different torque value or tightening procedure is given for a specific application. Torque values listed are for general use only. Check tightness of fasteners periodically.
- Shear bolts are designed to fail under predetermined loads. Always replace shear bolts with identical grade.
- Fasteners should be replaced with the same or higher grade. If higher grade fasteners are used, these should only be tightened to the strength of the original.
- Tighten plastic insert or crimped steel-type lock nuts to approximately 110 percent of the dry torque values shown in the chart below, applied to the nut, not to the bolt head. Tighten toothed or serrated-type lock nuts to the full torque value. *Note: “Lubricated” means coated with a lubricant such as engine oil, or fasteners with phosphate and oil coatings. “Dry” means plain or zinc plated without lubrication. Tighten lubricated bolts to approximately 80% of dry bolts.*

Mounting Kit - PN 61405



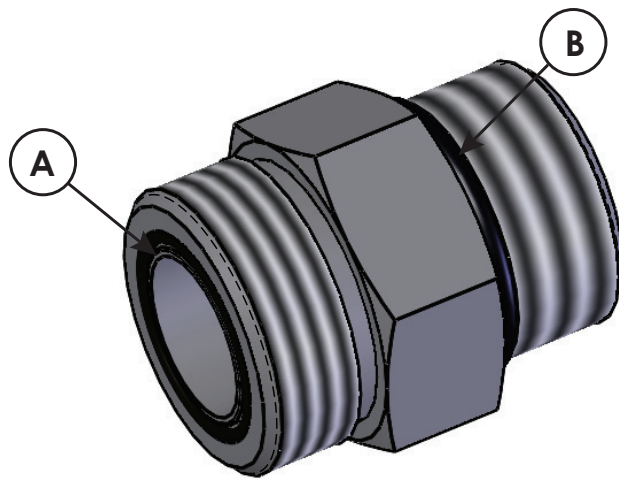
Mounting Kit - PN 61405 Parts List

PN 61405			
ITEM	PART	DESCRIPTION	QTY
1	60517	BASE 9000 FOLD OVER STABILIZER	1
2	58516	TIE DOWN ROD 1.00-8X28.50	8
3	58660	PLATE CRANE MOUNTING 1.00 IN RODS PC BLACK	4
4	8202	FRAME SUPPORT 15000 CRANE PC BLACK	4
5	58658	MTG BLOCK HIAB 122 PC BLACK	4
6	6538	WASHER 1.00 SAE FLAT YELLOW GR8	16
7	61558	NUT 1.00-8 HHGR8	16
8	61559	NUT 1.00-8 HHGR8 TOP LOCKING	8

Hydraulic Pressure Settings

Main Relief 3200 PSI			
		Pressure (PSI)	
Function	Flow	Extend	Retract
Inner	10.6	3000	3000
Outer	10.6	3000	3000
Extension	6.6	3000	3000
Rotation	6.6	1700	1700
TM Rot	6.6	2500	2500
TM Pad Rot	6.6	3000	3000
TM Clamp	6.6	3000	3000

Face Seal/O-Ring Size Chart



Hose Size	Fitting Size	Face Seal (A) Stellar® PN	O-ring Boss (B) Stellar® PN
1/4"	#4	C2027	D1245
3/8"	#6	C2028	D1246
1/2"	#8	C2029	D1247
5/8"	#10	32223	D1248
3/4"	#12	D1244	D1249
1"	#16		D1250

Hydraulic Installation

Never modify or alter any of the equipment, whether mechanical, electrical, or hydraulic, without Stellar Industries' approval.

⚠ WARNING Do not touch or grab any hoses that could be under pressure. Release system pressure before attempting to make adjustments or repairs.

Do not attempt service or repair when PTO is engaged.

Disassemble and assemble hydraulic components on a clean surface.

Clean all metal parts in a nonflammable cleaning fluid. Then lubricate all components to aid in assembly.



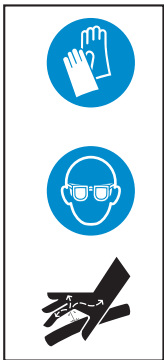
⚠ WARNING Hydraulic fluid expands when heated. This raises the pressure in an unventilated tank. Release the tank pressure before removing the cap completely. Failure to do so may cause the oil to shoot out of the tank very rapidly and cause severe burns.

⚠ WARNING Do not rely on the hydraulic fluid to support the boom or crane. If hydraulic fluid escapes, the boom or crane can fall immediately. Make sure the ground or blocking is supporting the boom before performing any maintenance or repair.

NOTICE Contaminants in a hydraulic system affect operation and will result in serious damage to the system components. Dirty hydraulic systems are a major cause of component failures.

If evidence of foreign particles is found in the hydraulic system, flush the system. When installing metal hydraulic tubes, tighten all fittings finger tight. Then, in order, tighten the fittings at the rigid end, the adjustable end, and the mounting brackets. After tubes are mounted, install the hoses. Connect both ends of the hose with all fittings finger tight. Position the hose so it does not rub the machine or another hose and has a minimum of bending and twisting. Tighten fittings in both couplings. Due to manufacturing methods, there is a natural curvature to a hydraulic hose. The hose should be installed so any bend is with this curvature.

⚠ WARNING



HYDRAULIC FLUID HAZARDS

- High pressure fluid leak will pierce skin.
- Release pressure before working on system.

STAND CLEAR OF POTENTIAL HIGH PRESSURE HYDRAULIC FLUID LEAKS

- Wear sturdy gloves and goggles. Detect leaks with wood or cardboard. NEVER use fingers.
- Fluid injected in skin will injure or kill and must be surgically removed by trained doctor immediately or gangrene will result.

BURN HAZARD

- Oil temperatures may exceed 120°F (35°C).
- Do not touch hydraulic system.
- Hot surface can burn.

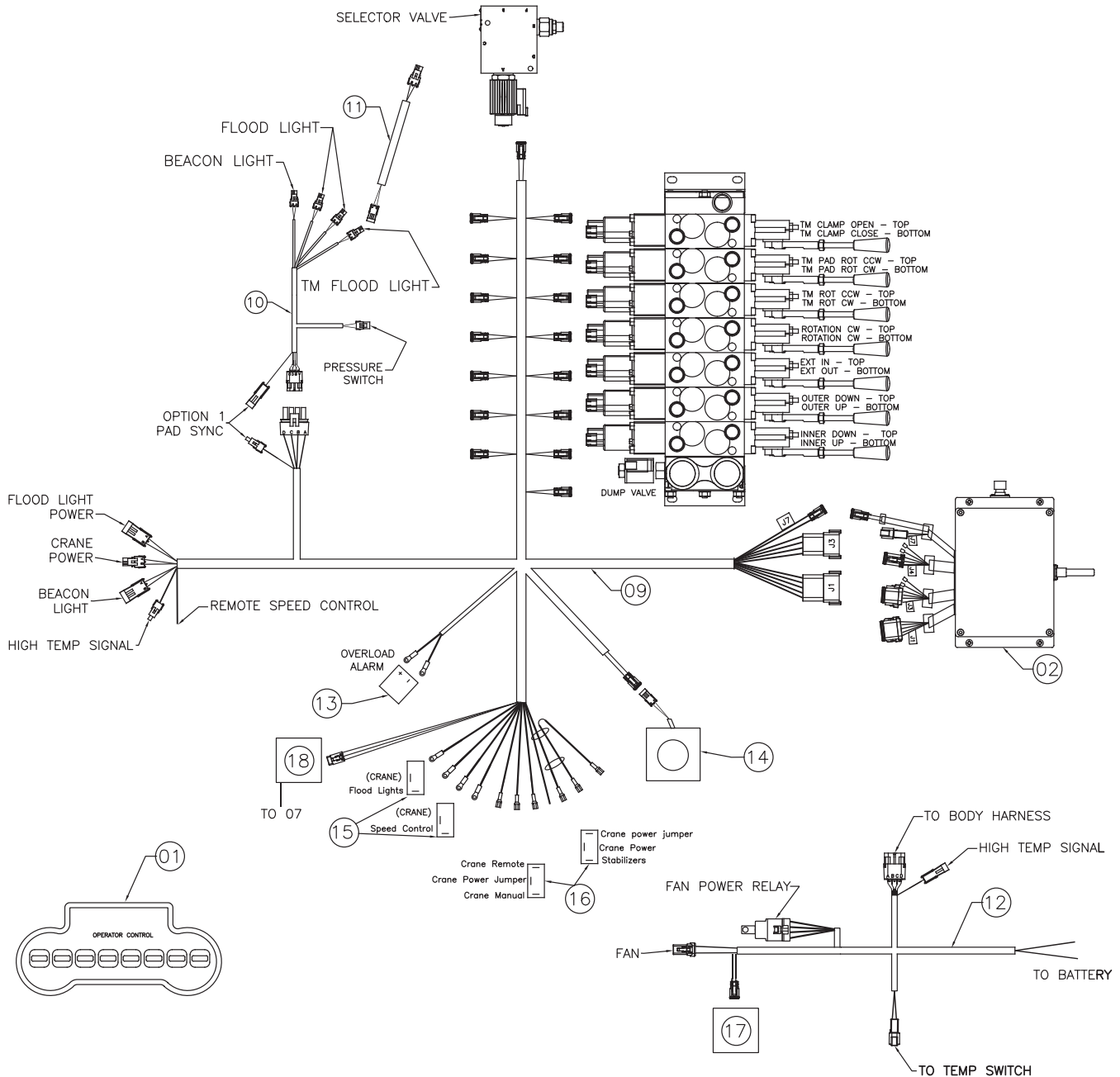
CHECK HYDRAULIC HOSES, TUBES, AND PIPES DAILY.

Main Hydraulic Kit - PN 134267 Parts List

PN 134267			
ITEM	PART	DESCRIPTION	QTY
01	134268	HOSE KIT,9000 CRANE V3 (INCL:2-14)	1
02	30014	HOSE-HYO .38 X 66	2R
03	74242	HOSE-HYO .38 X 170	2R
04	30476	HOSE-HYO .38 X 228	2R
05	79695	HOSE-HYO .38 X 34	6R
06	51818	HOSE-HYO .25 X 264	4R
07	65366	HOSE-HYO .38 X 100	2R
08	107505	HOSE-HYO .38 X 54	2R
09	62801	HOSE-HYO .50 X 40	1R
10	62802	HOSE-HYO .50 X 40	1R
11	52477	HOSE-HYO .50 X 22	2RE
12	62800	HOSE-HYO .25 X 264	2R
13	65570	HOSE-HYO .50 X 24	1R
14	66271	HOSE-HYO .75 X 75	1R
15	C1854	FTG 6-8 MFS-MORB STRAIGHT	12
16	0279	FTG 6-6 MFS-MORB STRAIGHT	4
17	51817	FTG 4-4 MAORB-FORB 90	1
18	3861	FTG 6-6 MAORB-FORB 90	1
19	D1302	FTG 6-10 MFS-MAORB 90	7
20	1554	FTG 8-8 MFS-MORB STRAIGHT	2
21	C1111	FTG 10-6 MORB-FORB STRAIGHT REDUCE[7
22	25361	FTG 6-6 MFS-MAORB 90 LONG	9
23	30542	FTG 12-12-12 MAORB-FORB-FORB TEE	1
24	44521	FTG 5-4 MORB-FORB STRAIGHT REDUCER	1
25	C2252	FTG 8-10 MFS-MAORB STRAIGHT	1
26	C1180	FTG 8-12 MFS-MORB STRAIGHT	4
27	C0885	FTG 8-6 MORB-FORB STRAIGHT REDUCER	2
28	C5968	FTG 12-12 MFS-MAORB 90	1
29	13554	QUICK CPLR FFH04-38-SAE-F	2
30	13555	QUICK CPLR FFH04-38-SAE-M	2
31	13556	QUICK CPLR FFN06-12SAE-F	1
32	13557	QUICK CPLR FFN06-12SAE-M	1
33	47405	FTG 6-6 MORB-MFS BULKHEAD STRAIGHT	4
34	1562	FTG 6-6-6 MFS-MFS-MFS TEE	2
35	39780	GAUGE OIL LF 2.5 0-5000 CBM SAE	1
36	C3643	FTG 8-10 MFS-MAORB 90	3
37	47406	FTG 8-8 MORB-MFS BULKHEAD STRAIGHT	2
38	44534	SWITCH PRES OVERLD CD-11 C-3200R/WD	1
39	D0165	FTG 8-8-8 MFS-FFSS-MFS RUN TEE	1
40	C2248	FTG 6-6 MFS-FFSS 90	2
41	C2376	FIG 8-8 MFS-FFSS 90	1

REV. INITIAL RELEASE

Control Kit (900 MHz Version) - PN 92662



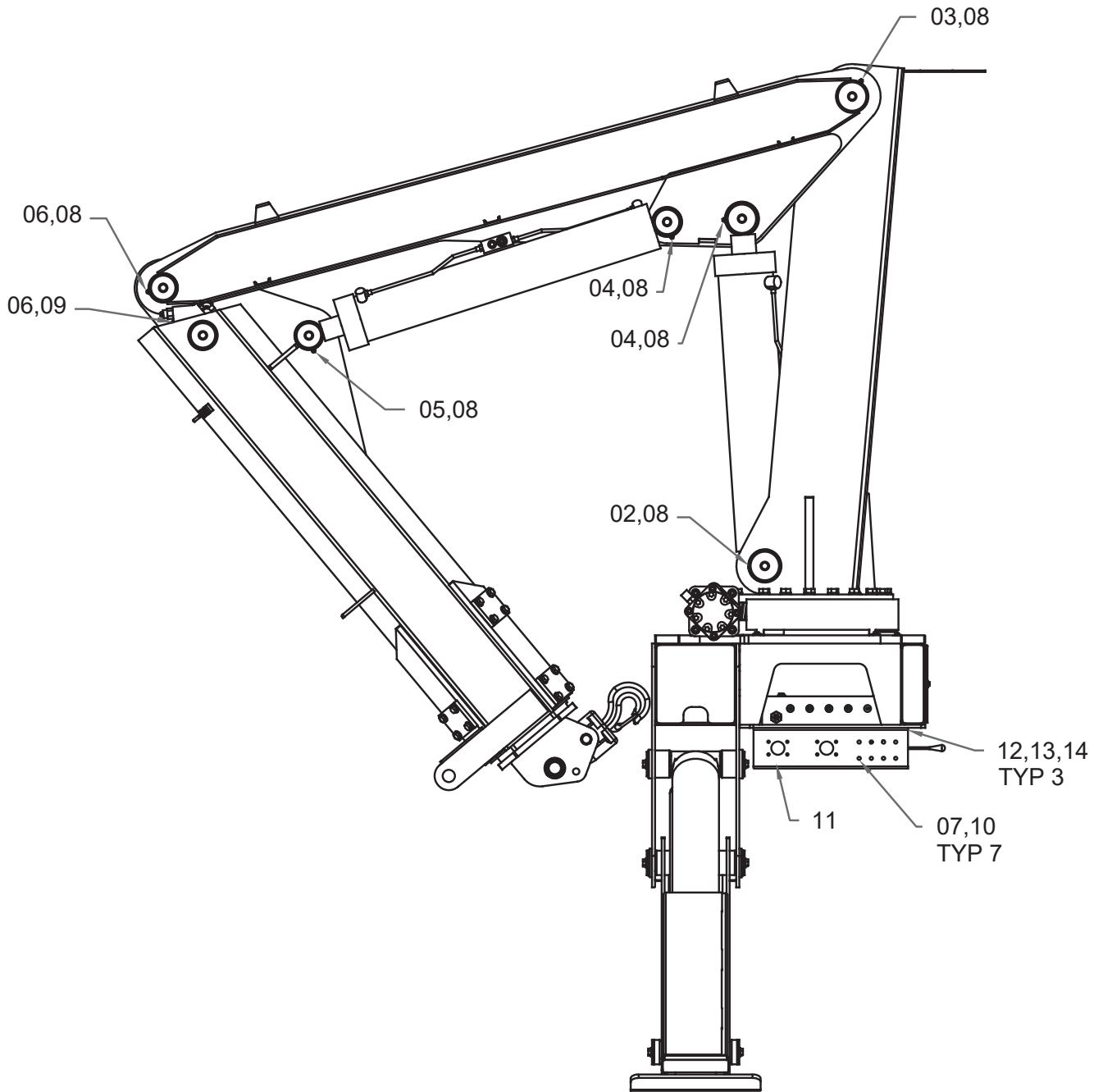
Control Kit (900 MHz Version) - PN 92662 Parts List

PN 92662			
ITEM	PART	DESCRIPTION	QTY
01	89149	TRANSMITTER SCANRECO 9/135/17 /23/2B	1
02	930B2	RECEIVER ASM SCANRECO OTR 900 MHZ	1
03	89152	CABLE BACKUP 10M SCANRECO	1
04	89154	BATTERY SCANRECO	2
05	89155	CHARGER BATTERY SCANRECO	1
06	89639	STRAP CARRYING SCANRECO	1
07	93191	CABLE ASM M 12 5P M-F RA 5FT	1REF
08	93192	DUST CAP M 12 SKT BLACK PLASTIC	1REF
09	93695	WIRE HRNS CRANE 9K-2BK	1
10	93204	WIRE HRNS CRANE MAST LRG OTR	1
11	68797	WIRE HARNESS MAIN BOOM 2B000 TM LTS	1
12	125411	WIRE HRNS OTR COOLER FAN HTP	1
13	78246	BACKUP ALARM 87 DECIBEL	1
14	93201	E-STOP SWITCH ASM 9/13.5K CRANE	1
15	C4815	SWITCH, TOGGLE ON/OFF	2
16	8623	SWITCH TOGGLE ON-OFF-ON SGL P DBL T	2
17	125412	RELAY ASM COOLER FAN PWR INTRLK	1
18	125415	RELAY ASM HTP ALARM INDICATOR1	1

Control Kit (434 MHz Version) - PN 92663 Parts List

PN 92663			
ITEM	PART	DESCRIPTION	QTY
01	93084	TRANSMITTER SCANRECO 9/135/17/23/28	1
02	93083	RECEIVER ASM SCANRECO OTR 434 MHZ	1
03	89152	CABLE BACKUP 10M SCANRECO	1
04	89154	BATTERY SCAN R ECO	2
05	89155	CHARGER BATTERY SCANRECO	1
06	89639	STRAP CARRYING SCANRECO	1
07	93191	CABLE ASM M 12 5P M-F RA 5FT	1REF
08	93192	DUST CAP M 12 SKT BLACK PLASTIC	1REF
09	93695	WIRE HRNS CRANE 9K-28K	1
10	93204	WIRE HRNS CRANE MAST LRG OTR	1
11	68797	WIRE HARNESS MAIN BOOM 28000 TM LTS	1
12	125411	WIRE HRNS OTR COOLER FAN HTP	1
13	78246	BACKUP ALARM 87 DECIBEL	1
14	93201	E-STOP SWITCH ASM 9/13.5K CRANE	1
15	C4815	SWITCH, TOGGLE ON/OFF	2
16	8623	SWITCH TOGGLE ON-OFF-ON SGL P DBL T	2
17	125412	RELAY ASM COOLER FAN PWR INTRLK	1
18	125415	RELAY ASM HTP ALARM INDICATOR	1

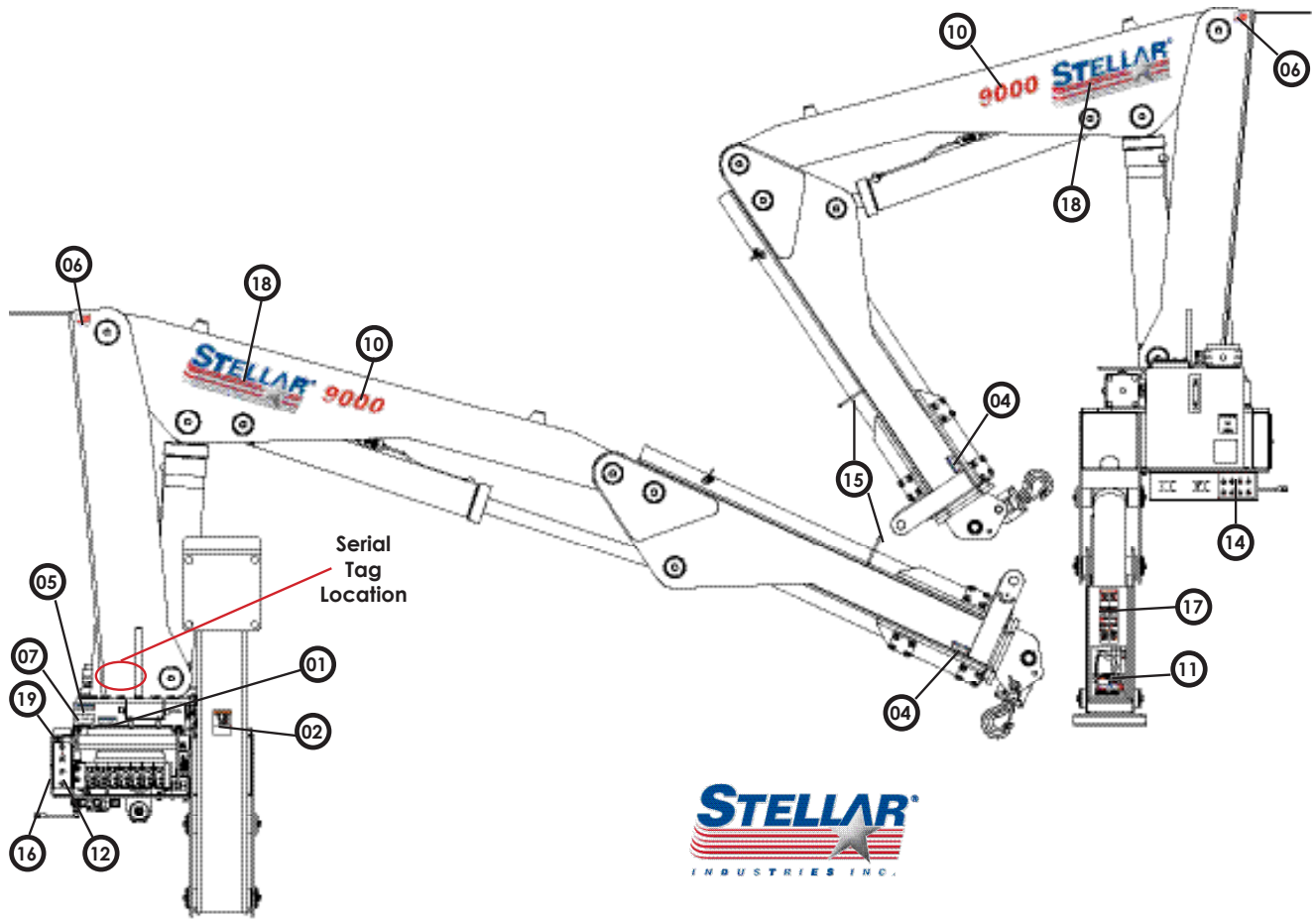
Grease Kit - PN 61641



Grease Kit - PN 61641 Parts List

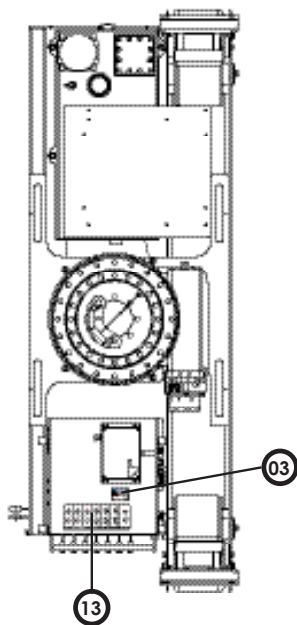
PN 61641			
ITEM	PART	DESCRIPTION	QTY
01	40083	HOSE KIT 9000 GREASE KIT (INCL:2-6)	1
02	40084	HOSE 0.13(549-01-01-2-2-2-84)	(1)
03	37554	HOSE 0.13(549-01-01-2-2-2-138)	(1)
04	41925	HOSE 0.13(549-01-01-2-2-2-185)	(2)
05	37558	HOSE 0.13(549-01-01-2-2-2-248)	(1)
06	42106	HOSE 0.13(549-01-01-2-2-2-224)	(2)
07	C2256	FTG CPLR PIPE 0.13	7
08	37561	FTG ADAPT 90 MNPTF/FNPSM 2107-2-2	6
09	37562	FTG ADAPT 45MNPTF/FNPSM 3107-2-2	1
10	56589	ZERK 1/8 NPT STRAIGHT LONG THREAD	7
11	61640PC	BRACKET GREASE LINE/TANK HEATER 9000 PC WHT	1
12	C0090	CAP SCR 0.31-18X1.00 BTNHD SS	3
13	0343	WASHER 0.31 USS FLAT ZINC	3
14	0342	NUT 0.31-18 HHGR5 NYLOC	3

Decal Placement - PN 30488



DECALS IN BOLD ARE NOT SHOWN - PLACE ON BODY

General Tire Crane Decal Kit - PN 85362				
Item No.	PN	Description	Location	QTY
01	15172	DECAL ASME/ANSI B30.22/B30.5	Crane Base	1
02	C4795	DECAL DANGER FOOT	Stabilizers - CS & SS	2
03	73929	DECAL RADIO PRESSURE WASHER NOTICE	Crane Base	1
04	16973	DECAL USE STELLAR APPROVED ATTACHMT	Main Boom - Both Sides	2
05	9188	DECAL WORM GEAR LUBRICATION	Crane Base	1
06	35234	MADE IN THE USA - STELLAR	Crane Mast - Both Sides	2
07	4214	DECAL CONTACT STELLAR	Crane Base	1
08	C4545	DECAL DANGER ELECTROCUTION	Four Corners of the Body	4
09	C5910	DECAL STELLAR LOGO 4.00X9.50 PRE-MASKED	Body - Optional	3



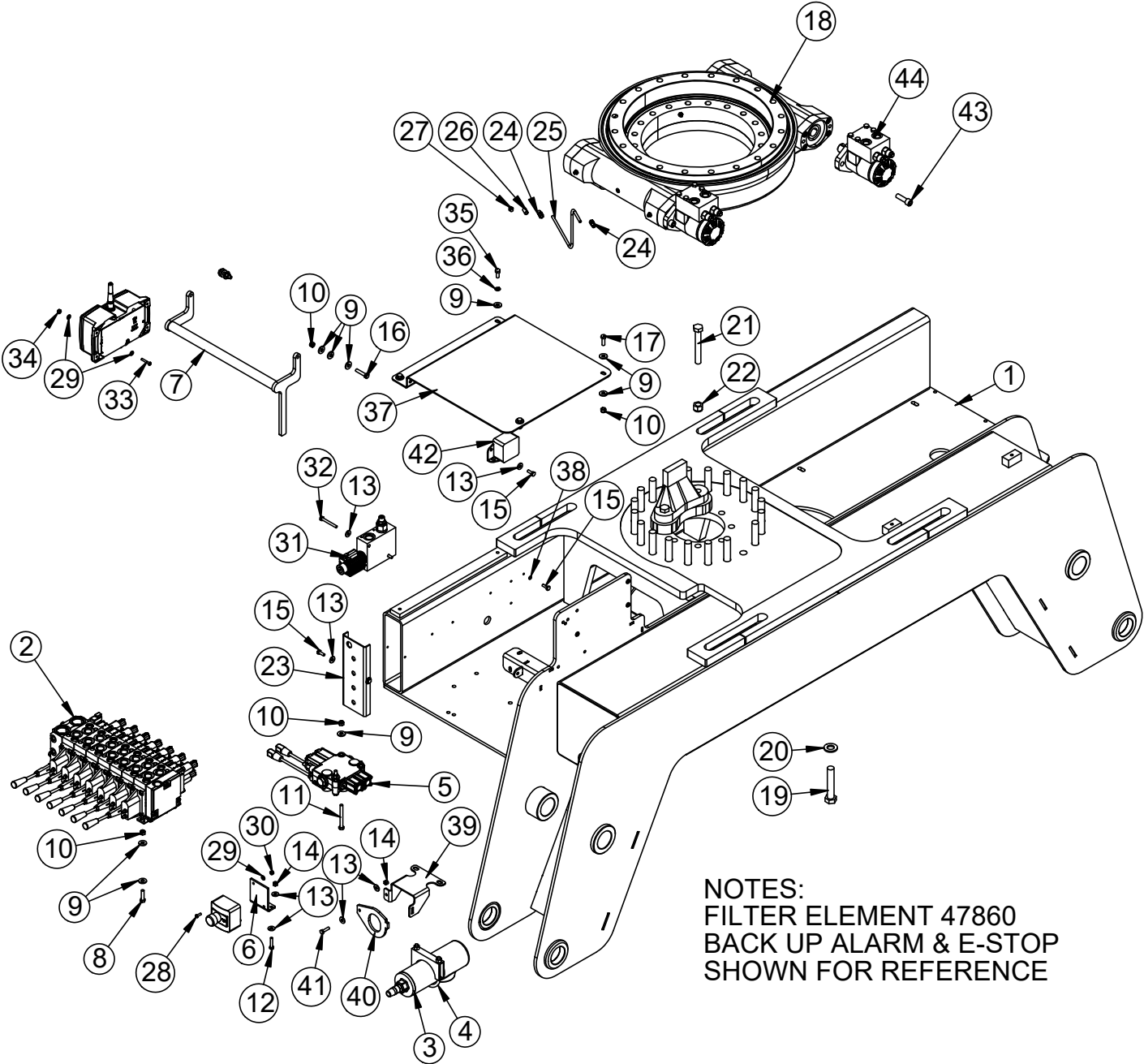
9000 Decal Kit - PN 85367				
Item No.	PN	Description	Location	QTY
10	54594	DECAL 9000 ID PRE-MASKED	Main Boom - Both Sides	2
11	64835	DECAL CAPACITY 9000 V2	Stabilizers CS & SS	2
12	65108	DECAL SWITCH PLATE 9000 V2	Crane Base	1
13	43469	DECAL VB CONTROL 23000	Crane Base	1
14	41918	DECAL 9000 GREASE KIT	Crane Base - CS	1
15	47404	DECAL COUPLERS 23000	Main Boom	1
16	13036	DECAL CRANE OUTRIGGER	Crane Base	1
17	54781	DECAL WARNING PLACARD	Stabilizers CS & SS	2
18	54589	DECAL STELLAR LOGO 8X22.25 PRE-MASKED	Main Boom - Both Sides	2
19	125941	DECAL OIL TEMP	Crane Base	1

Chapter 3 - Assembly Drawings

CHAPTER CONTENTS

Base Asm 9000 - PN 134262.....	22
Base Asm 9000 - PN 134262 Parts List.....	23
Base Asm 9000 - PN 134262 Parts List.....	24
Base Asm 9000 Rear MNT RH Drive - PN 134272.....	26
Base Asm 9000 Rear MNT RH Drive - PN 134272 Parts	27
Base Asm 9000 Rear MNT RH Drive - PN 134272 Parts	28
Gear Bearing - PN 134007.....	30
Valve Bank - PN 51658.....	31
Stabilizer Valve Bank - PN 61642	32
Valve Assembly - PN 66286.....	33
Mast Assembly - PN 29350.....	34
Mast Assembly - PN 29350 Parts List.....	35
Main Cylinder Assembly - PN 29352.....	36
Main Cylinder Assembly - PN 29352 Parts List.....	37
Main Boom Assembly - PN 29354	38
Main Boom Assembly - PN 29354 Parts List	39
Cylinder Assembly - PN 29356	40
Cylinder Assembly - PN 29356 Parts List	41
Extension Boom Assembly - PN 61204	42
Extension Boom Assembly - PN 61204	43
Extension Cylinder Assembly - PN 73499.....	44
Extension Cylinder Assembly - PN 73499 Parts List.....	45
Stabilizer Assembly - PN 61089.....	46
Stabilizer Assembly - PN 61089 Parts List.....	47
Reservoir Assembly - PN 100786	48
Reservoir Assembly - PN 100786 Parts List	49
Optional 6.7 Ton Hook Kit - PN 128833	50
Optional 6.7 Ton Hook Kit - PN 128833 Parts List	51
Compressor Mounting - PN 134013.....	52
Compressor Mounting - PN 134013 Parts List.....	53
Cooler Assembly - PN 86510	54
Cooler Assembly - PN 86510 Parts List.....	55
Radio Transmitter - PN 89149/93084.....	56
Transmitter Docking Station Asm (Opt.) - PN 97334	58
Transmitter Docking Station (Opt.) - PN 97334 Parts List	59
Wiring Diagram Docking Station - PN 65989.....	60

Base Asm 9000 - PN 134262



NOTES:
 FILTER ELEMENT 47860
 BACK UP ALARM & E-STOP
 SHOWN FOR REFERENCE

Base Asm 9000 - PN 134262 Parts List

134262			
ITEM	PART	DESCRIPTION	QTY
1	134263	BASE 9000 V3	1
2	51658	VB 7 SECT DANFOSS PVG32	1
3	78432	FILTER HIGH PRESSURE 1.06-12SAE 5000PSI 10 MICRON	1
4	78433	CLAMP HIGH PRESSURE FILTER 3.00	1
5	61642	VB 2 SECT HYDROCONTROL M45 PB REMOVE	1
6	22918	BRACKET E-STOP 28000 PC WHITE	1
7	61092	BAR PANIC 9000 FOLD OVER STABILIZER	1
8	0485	CAP SCR 0.31-18X1.25 HHGR5	3
9	0343	WASHER 0.31 USS FLAT	20
10	0342	NUT 0.31-18 HHGR5 NYLOC	9
11	C0930	CAP SCR 0.31-18X3.00 HHGR5	2
12	0437	CAP SCR 0.25-20X1.25 HHGR5	2
13	0340	WASHER 0.25 USS FLAT	12
14	0333	NUT 0.25-20 HHGR5 NYLOC	3
15	0479	CAP SCR 0.25-20X0.75 HHGR5	5
16	0486	CAP SCR 0.31-18X1.50 HHGR5	2
17	C0922	CAP SCR 0.31-18X1.00 HHGR5	2
18	134007	BEARING SWING DRIVE 17 IN DOUBLE WORM ENCLOSED	1
19	C6218	CAP SCR 0.75-10X4.00 HHGR8	20
20	C6219	WASHER 0.75 SAE FLAT YELLOW GR8	20
21	8522	CAP SCR 0.63-11X4.50 HHGR8	2
22	2826	NUT 0.63-11 HHGR5 NYLOC	2
23	49327	PLATE SWITCH MTG 15000 PC WHITE	1
24	D1345	FTG CPRSN 0.12NPT/0.25 TUBE	2
25	D1810	TBE AIR SAEJ844 TYPE A .25 (RM)	5
26	22161	FTG 2-2 FP-FP COUPLER STRAIGHT BRASS	1
27	C1592	ZERK 1/8 NPT STRAIGHT	1
28	59075	CAP SCR #10-24X0.63 BTNHD ZC	2
29	D0178	WASHER #10 SAE FLAT	10
30	C4956	NUT #10-24 HH NYLOC SS	2
31	66286	SOLENOID VALVE ASM 3 WAY 2 POS W/ RELIEF	1
32	0438	CAP SCR 0.25-20X2.25 HHGR5	2
33	30472	CAP SCR #10-24X1.25 BTNHD SS	4
34	26034	NUT #10-24 HH NYLOC	4
35	0420	CAP SCR 0.31-18X0.75 HHGR5	2
36	0522	WASHER 0.31 LOCK	2
37	93870	COVER VB 9000	1
38	0521	WASHER 0.25 LOCK	1
39	131087	PLATE PRESSURE FILTER GUARD	1
40	131088	PLATE PRESSURE FILTER GUARD REMOVABLE	1

Base Asm 9000 - PN 134262 Parts List

134262

ITEM	PART	DESCRIPTION	QTY
41	0480	CAP SCR 0.25-20X1.00 HHGR5	1
42	78246	BACKUP ALARM 87 DECIBEL	1
43	62484	CAP SCR 12MMX40MM SH	4
44	79698	MOTOR ASM GEAR BEARING 13500	2

REV. INITIAL RELEASE

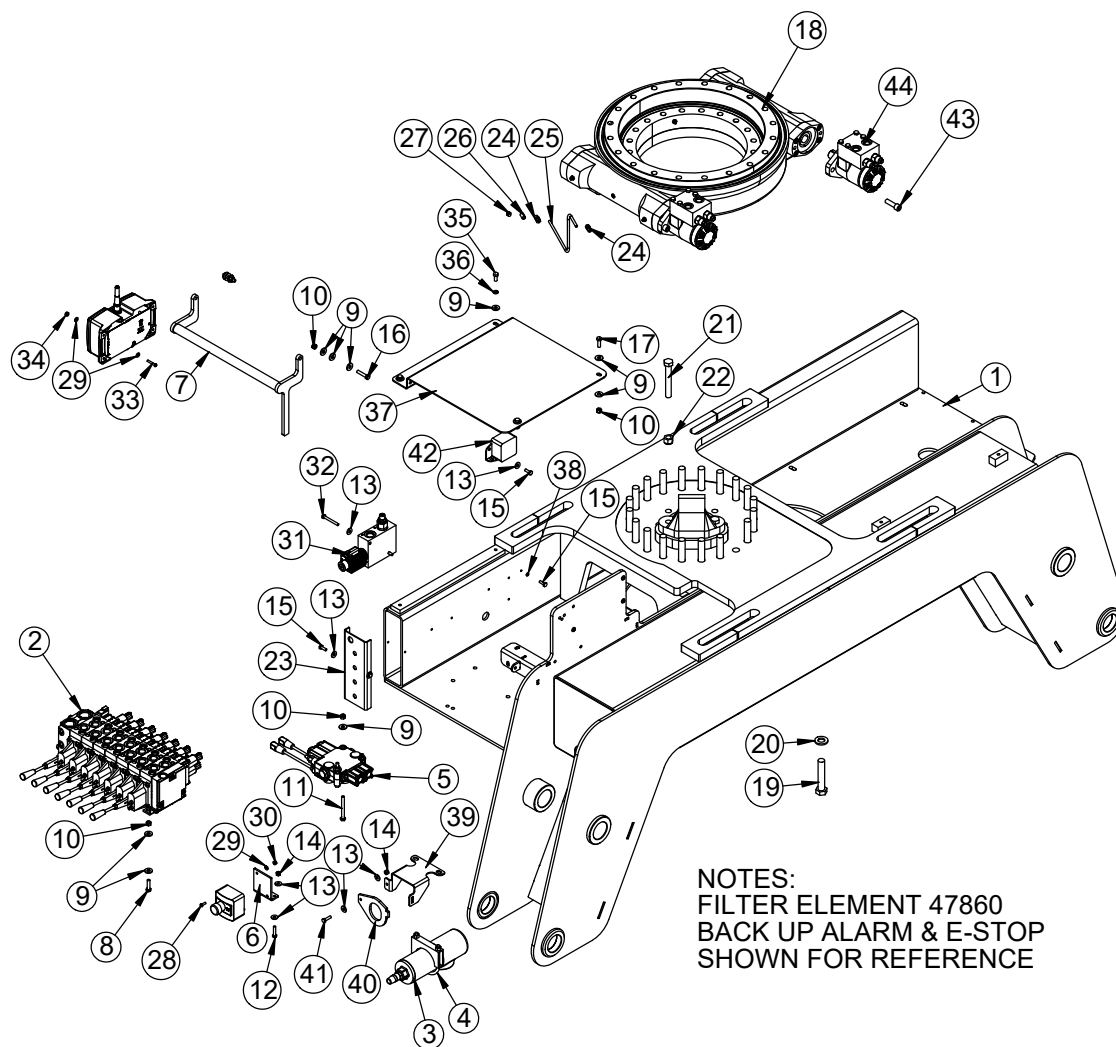
NOTES:

FILTER ELEMENT: 47860.

BACK UP ALARM & E-STOP SHOWN FOR REFERENCE.

This page left intentionally blank.

Base Asm 9000 Rear MNT RH Drive - PN 134272



NOTES:
FILTER ELEMENT 47860
BACK UP ALARM & E-STOP
SHOWN FOR REFERENCE

NOTES
FILTER ELEMENT: 47860
BACK UP ALARM & E-STOP SHOWN FOR REFERENCE.

Base Asm 9000 Rear MNT RH Drive - PN 134272 Parts

PN 134272			
ITEM	PART	DESCRIPTION	QTY
1	134273	BASE 9000 V3 REAR MNT RH DRIVE	1
2	51658	VB 7 SECT DANFOSS PVG32	1
3	78432	FILTER HIGH PRESSURE 1.06-12SAE 5000PSI 10 MICRON	1
4	78433	CLAMP HIGH PRESSURE FILTER 3.00	1
5	61642	VB 2 SECT HYDROCONTROL M45 PB REMOVE	1
6	22918	BRACKET E-STOP 28000 PC WHITE	1
7	61092	BAR PANIC 9000 FOLD OVER STABILIZER	1
8	0485	CAP SCR 0.31-18X1.25 HHGR5	3
9	0343	WASHER 0.31 USS FLAT	20
10	0342	NUT 0.31-18 HHGR5 NYLOC	9
11	C0930	CAP SCR 0.31-18X3.00 HHGR5	2
12	0437	CAP SCR 0.25-20X1.25 HHGR5	2
13	0340	WASHER 0.25 USS FLAT	12
14	0333	NUT 0.25-20 HHGR5 NYLOC	3
15	0479	CAP SCR 0.25-20X0.75 HHGR5	5
16	0486	CAP SCR 0.31-18X1.50 HHGR5	2
17	C0922	CAP SCR 0.31-18X1.00 HHGR5	2
18	134007	BEARING SWING DRIVE 17 IN DOUBLE WORM ENCLOSED	1
19	C6218	CAP SCR 0.75-10X4.00 HHGR8	20
20	C6219	WASHER 0.75 SAE FLAT YELLOW GR8	20
21	8522	CAP SCR 0.63-11X4.50 HHGR8	2
22	2826	NUT 0.63-11 HHGR5 NYLOC	2
23	49327	PLATE SWITCH MTG 15000 PC WHITE	1
24	D1345	FTG CPRSN 0.12NPT/0.25 TUBE	2
25	D1810	TBE AIR SAEJ844 TYPE A .25 (RM)	5
26	22161	FTG 2-2 FP-FP COUPLER STRAIGHT BRASS	1
27	C1592	ZERK 1/8 NPT STRAIGHT	1
28	59075	CAP SCR #10-24X0.63 BTNHD ZC	2
29	D0178	WASHER #10 SAE FLAT	10
30	C4956	NUT #10-24 HH NYLOC SS	2
31	66286	SOLENOID VALVE ASM 3 WAY 2 POS W/ RELIEF	1
32	0438	CAP SCR 0.25-20X2.25 HHGR5	2
33	30472	CAP SCR #10-24X1.25 BTNHD SS	4
34	26034	NUT #10-24 HH NYLOC	4
35	0420	CAP SCR 0.31-18X0.75 HHGR5	2
36	0522	WASHER 0.31 LOCK	2
37	93870	COVER VB 9000	1
38	0521	WASHER 0.25 LOCK	1
39	131087	PLATE PRESSURE FILTER GUARD	1
40	131088	PLATE PRESSURE FILTER GUARD REMOVABLE	1
41	0480	CAP SCR 0.25-20X1.00 HHGR5	1

Base Asm 9000 Rear MNT RH Drive - PN 134272 Parts

PN 134272

ITEM	PART	DESCRIPTION	QTY
42	78246	BACKUP ALARM 87 DECIBEL	1
43	62484	CAP SCR 12MMX40MM SH	4
44	79698	MOTOR ASM GEAR BEARING 13500	2

REV. INITIAL RELEASE

NOTES

FILTER ELEMENT: 47860

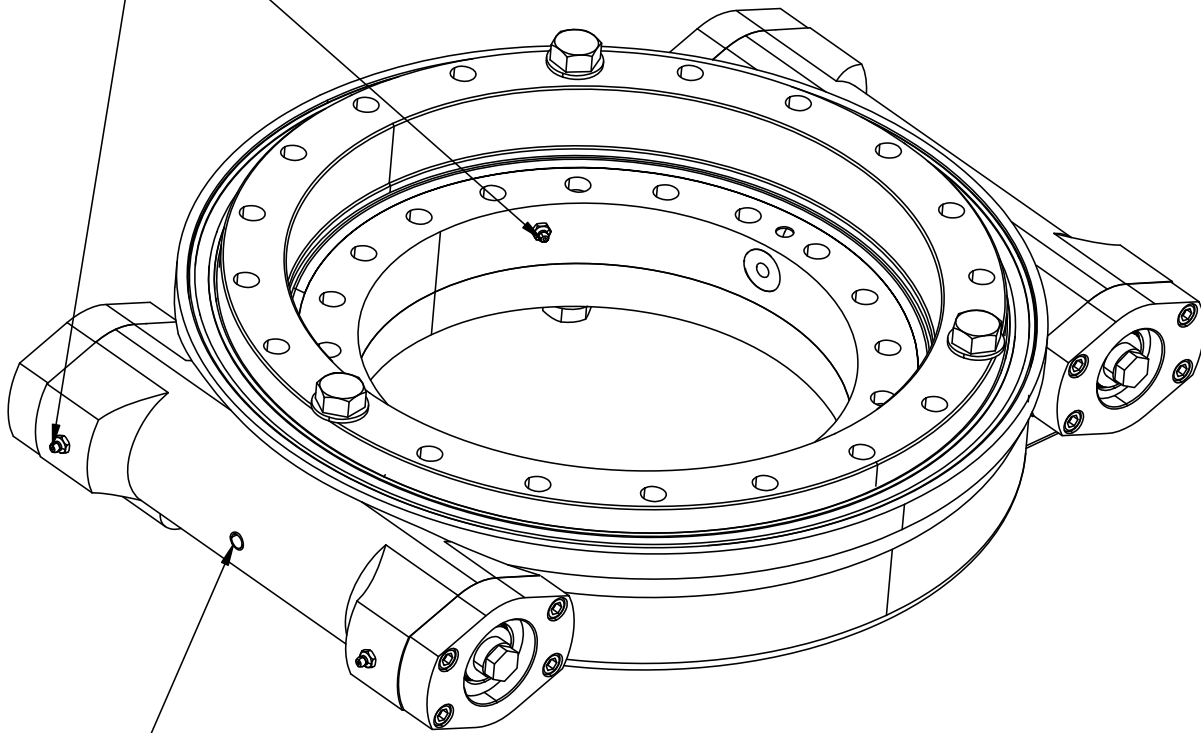
BACK UP ALARM & E-STOP SHOWN FOR REFERENCE.

Page Left Intentionally Blank.

Gear Bearing - PN 134007

USE EP2 LITHIUM COMPLEX GREASE, STELLAR PN 78090
ON WORM BEARINGS AND BEARING RACE

GREASE MAIN BEARING RACE THROUGH
REMOVED MOUNTED GREASE ZERK

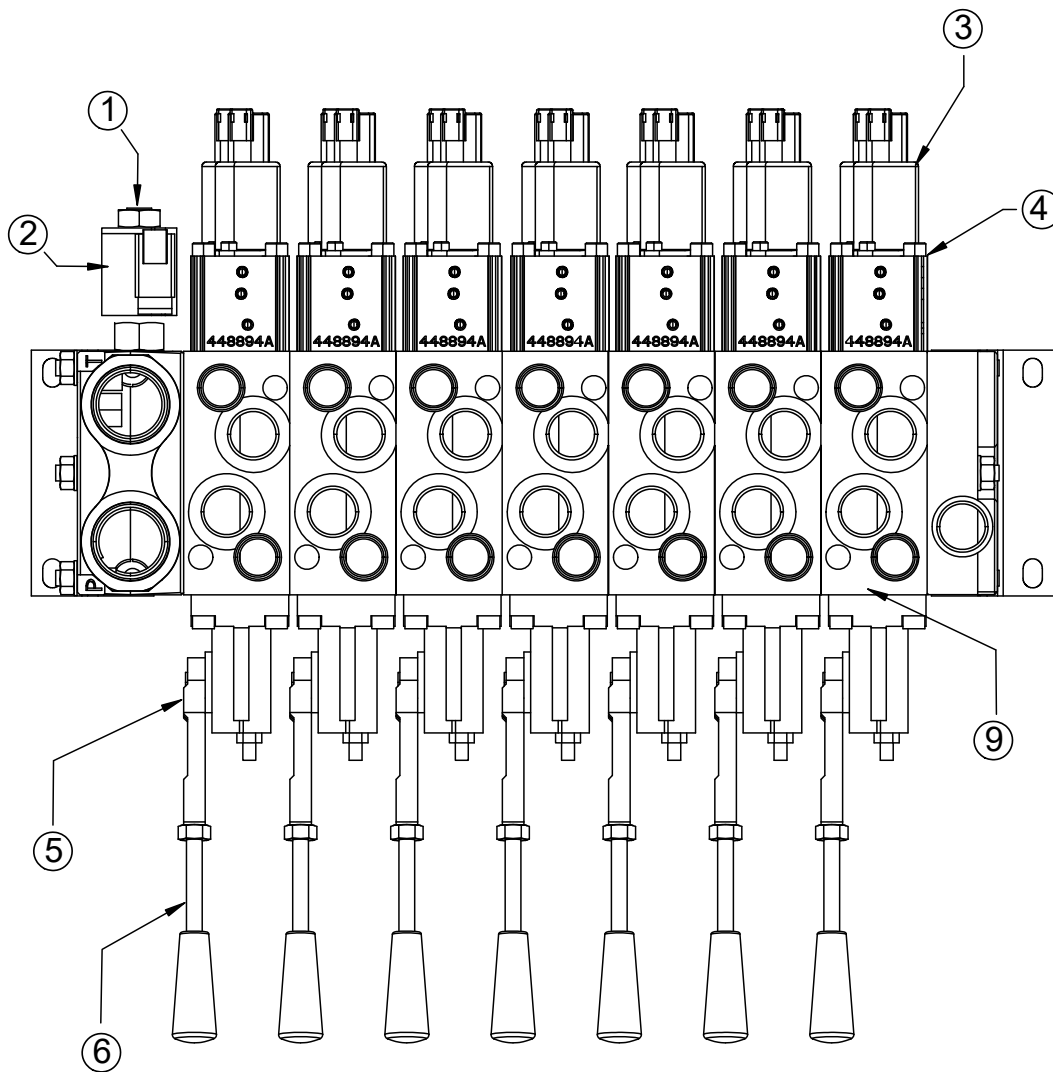


USE MOLY GREASE 936SF HEAVY, STELLAR PN 4460
ON WORM AND BEARING GEAR TEETH

PN 134007

ITEM	PART	DESCRIPTION	QTY
1	77741	BEARING AND SEAL KIT 14IN, 17IN, 25IN ENCLOSED KNMTS	2
2	137778	WORM 17IN ENCLOSED KNMTS 134007	2
3	67864	END CAP 9IN/14IN/17/IN/25IN KNMTS AFTER 2006	2
4	67863	SHIM KIT 6000 KINEMATICS W17B02 AFTER 2006	2
REV. INITIAL RELEASE			

Valve Bank - PN 51658



PN 51658

ITEM	PART	DESCRIPTION	QTY
1	50234	DUMP VALVE	1
2	55126	DUMP VALVE COIL	1
3	50231	ACTUATOR COIL	7
4	50233	ACTUATOR ASSEMBLY	7
5	48696	BASE HANDLE	7
6	47866	HANDLE/LEVER	7
7	93087	SEAL KIT & TIE RODS DANFOSS PVG32	1
8	93088	SEAL KIT PVHC ACTUATOR PVG32	7
9	103392	SEAL KIT MANUAL OPERATOR PVG32	7

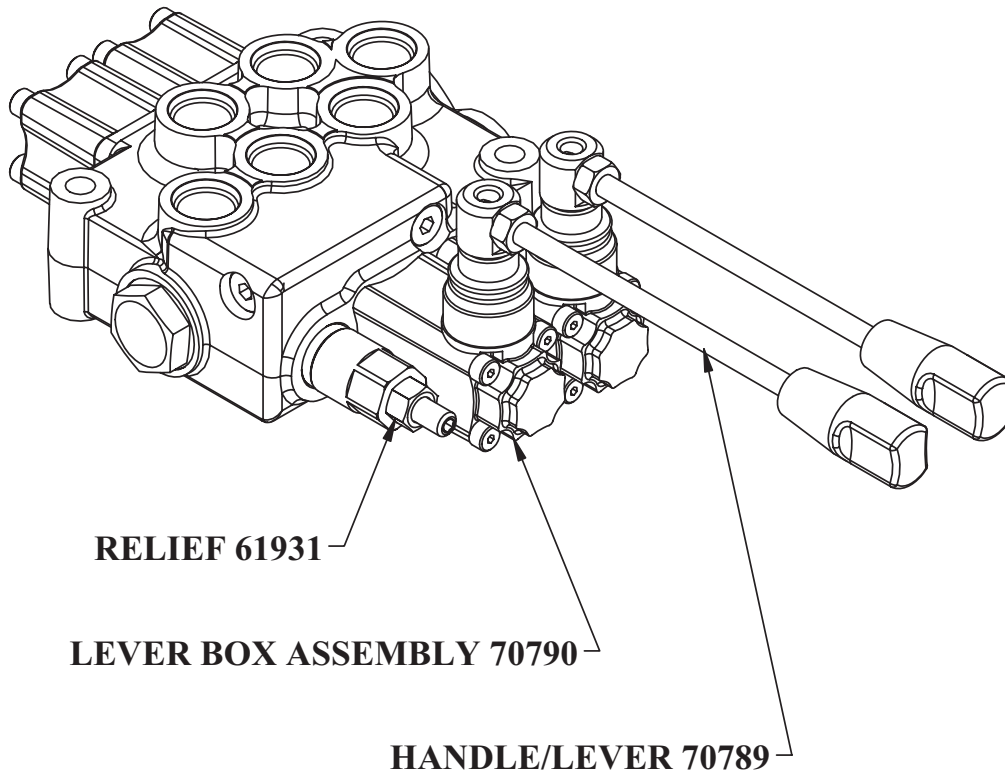
NOTES:

50233 INCLUDES MANIFOLD AND TWO ACTUATOR COILS.

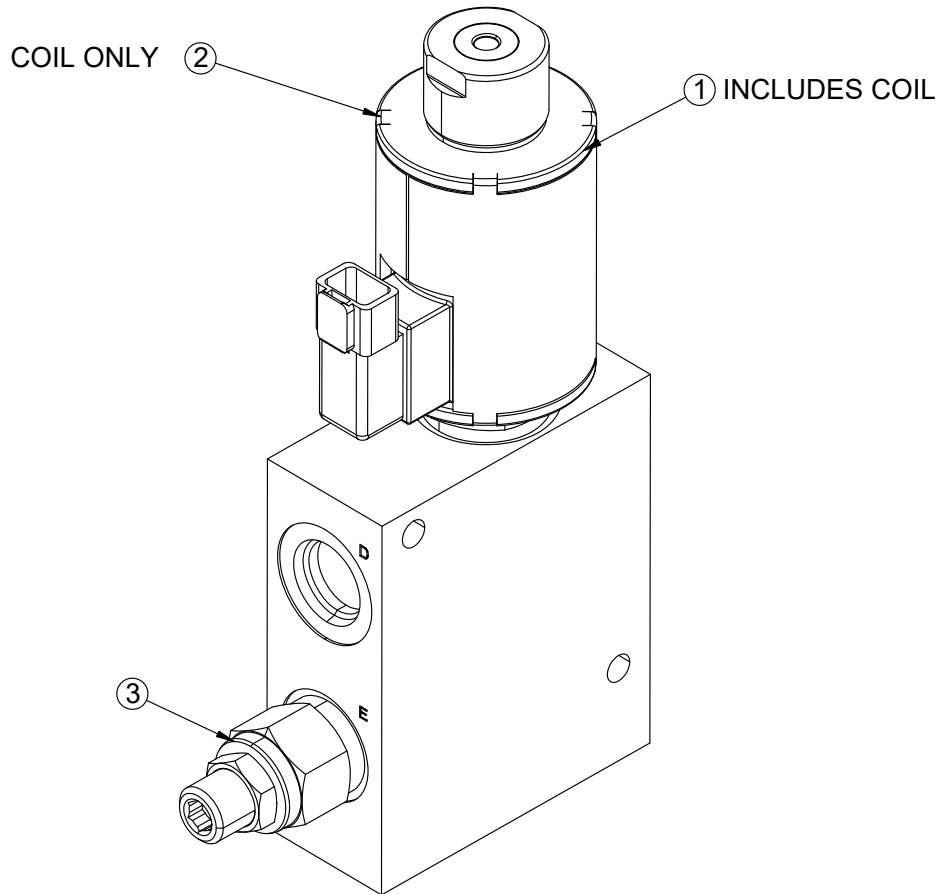
93087 INCLUDES TIE RODS AND SEALS FOR ALL SECTIONS.

93087 & 93088 NOT SHOWN IN DRAWING.

Stabilizer Valve Bank - PN 61642

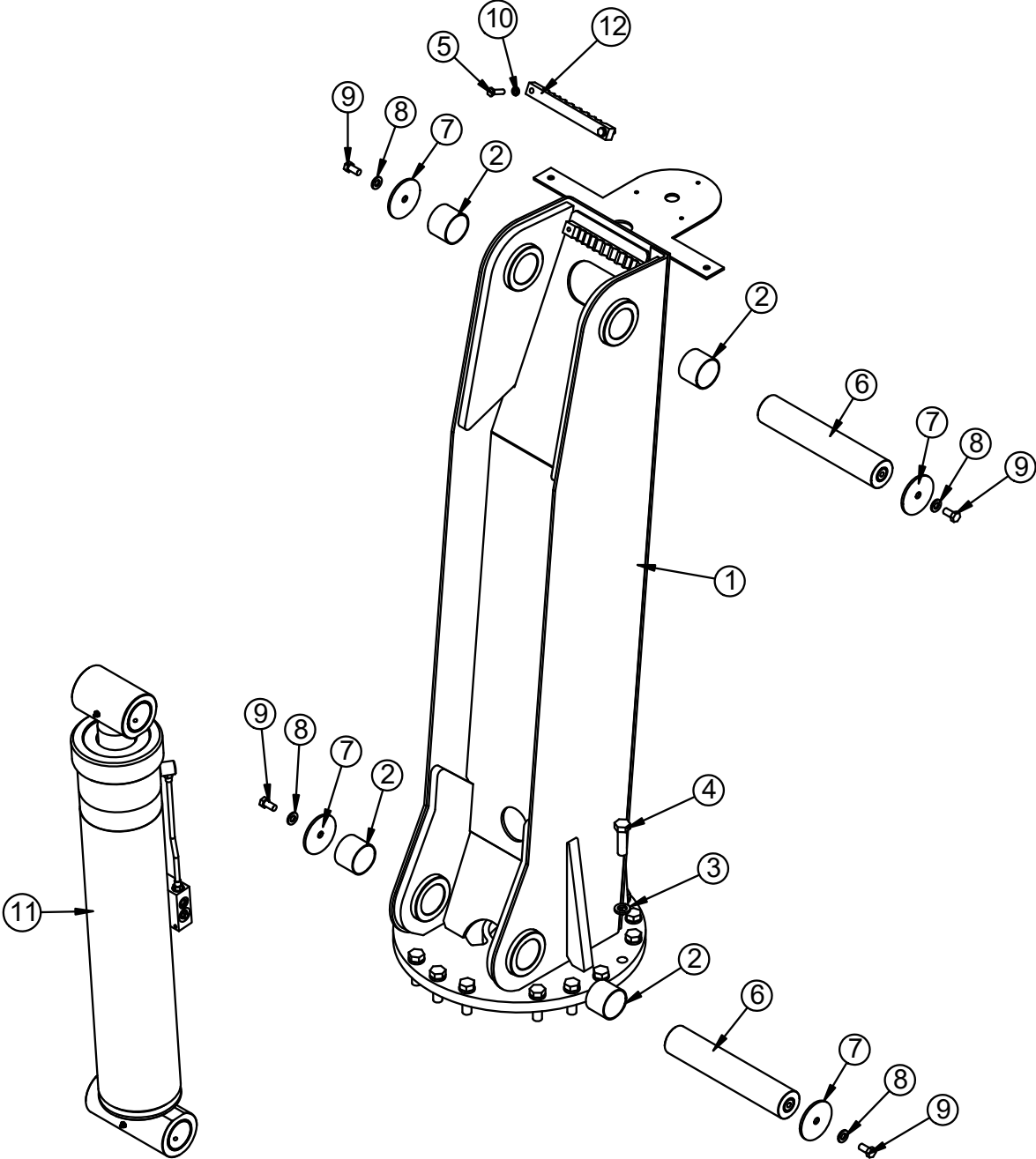


Valve Assembly - PN 66286



PN 66286			
ITEM	PART	DESCRIPTION	QTY
1	133878	VALVE SOLND W/COIL BUCHER ESDV-12-N-3D-12D-T	1
2	134118	COIL BUCHER 12VDC ESDV DEUTSCH	1
3	69030	VALVE RELIEF RVPS-10-N-S-0-50	1

Mast Assembly - PN 29350

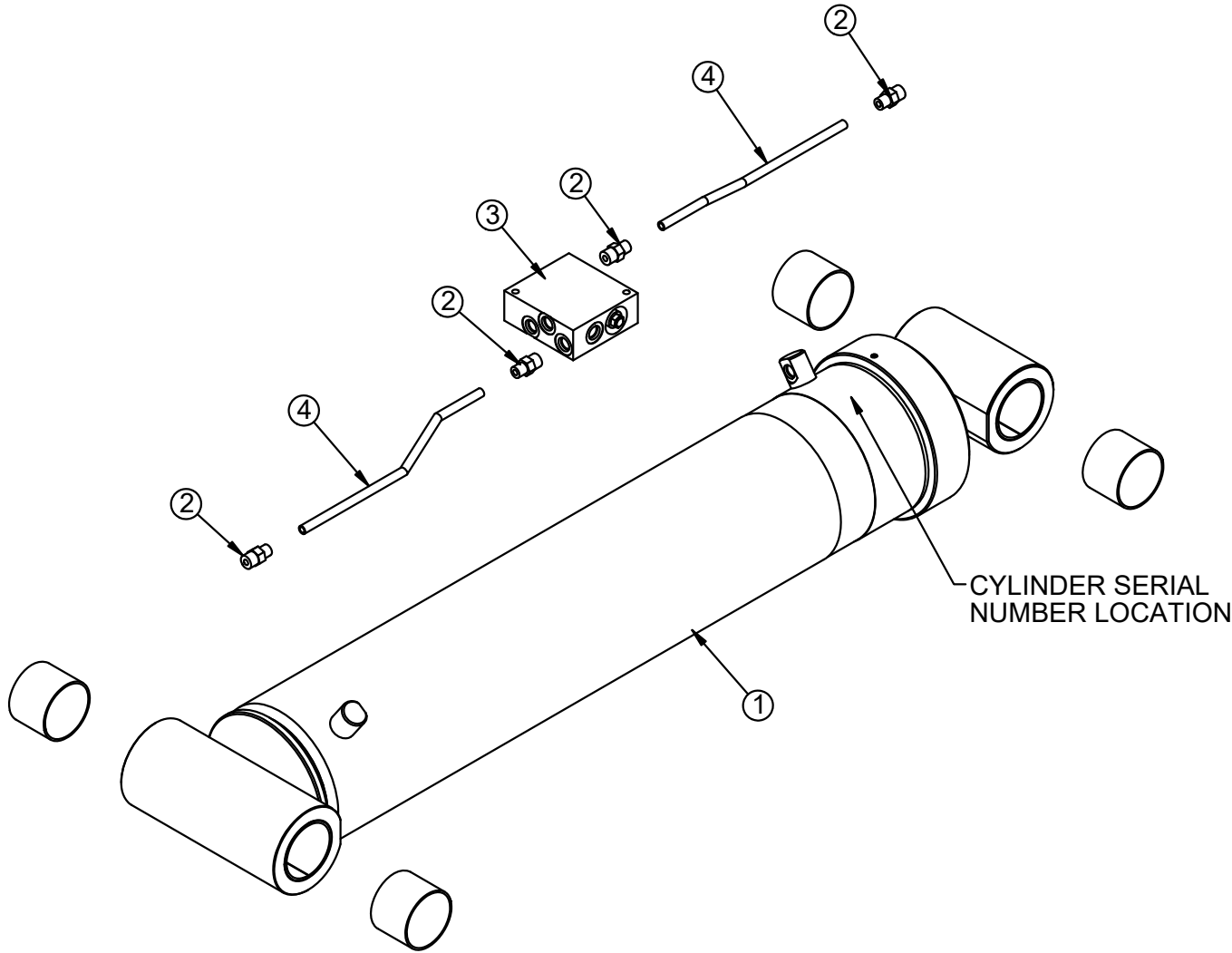


Mast Assembly - PN 29350 Parts List

PN 29350			
ITEM	PART	DESCRIPTION	QTY
1	27981	MAST 9000	1
2	0635	BUSHING 40DXR32 GARLOCK	4
3	C6219	WASHER 0.75 SAE FLAT YELLOW GR8	18
4	4974	CAP SCR 0.75-10X2.50 HHGR8 ZY	18
5	0345	CAP SCR 0.38-16X1.50 HHGR5	2
6	71876CR	PIN 2.50X13.13 D&T ZC	2
7	8377	PIN CAP 0.56X3.50X0.19 YZ	4
8	D0790	WASHER 0.50 FLAT GR8	4
9	10172	CAP SCR 0.50-13X1.00 HHGR8 ZY	4
10	0523	WASHER 0.38 LOCK	2
11	29352	CYLINDER ASM 6.00X28.63	1
12	30009	HOSE CLAMP 9000	1

NOTE:
BUSHINGS SHOWN FOR REFERENCE

Main Cylinder Assembly - PN 29352



Main Cylinder Assembly - PN 29352 Parts List

PN 29352			
ITEM	PART	DESCRIPTION	QTY
1	72398	CYLINDER 6.00X28.63 (4400 PSI)	1
2	0279	FTG 6-6 MFS-MORB STRAIGHT	4
3	16154	MANIFOLD DOUBLE T11A 3500 PSI	1
4	29353	TUBE ASM 0.38X11.39 YZ	2

NOTE:

C-BALANCE VALVE: 9803

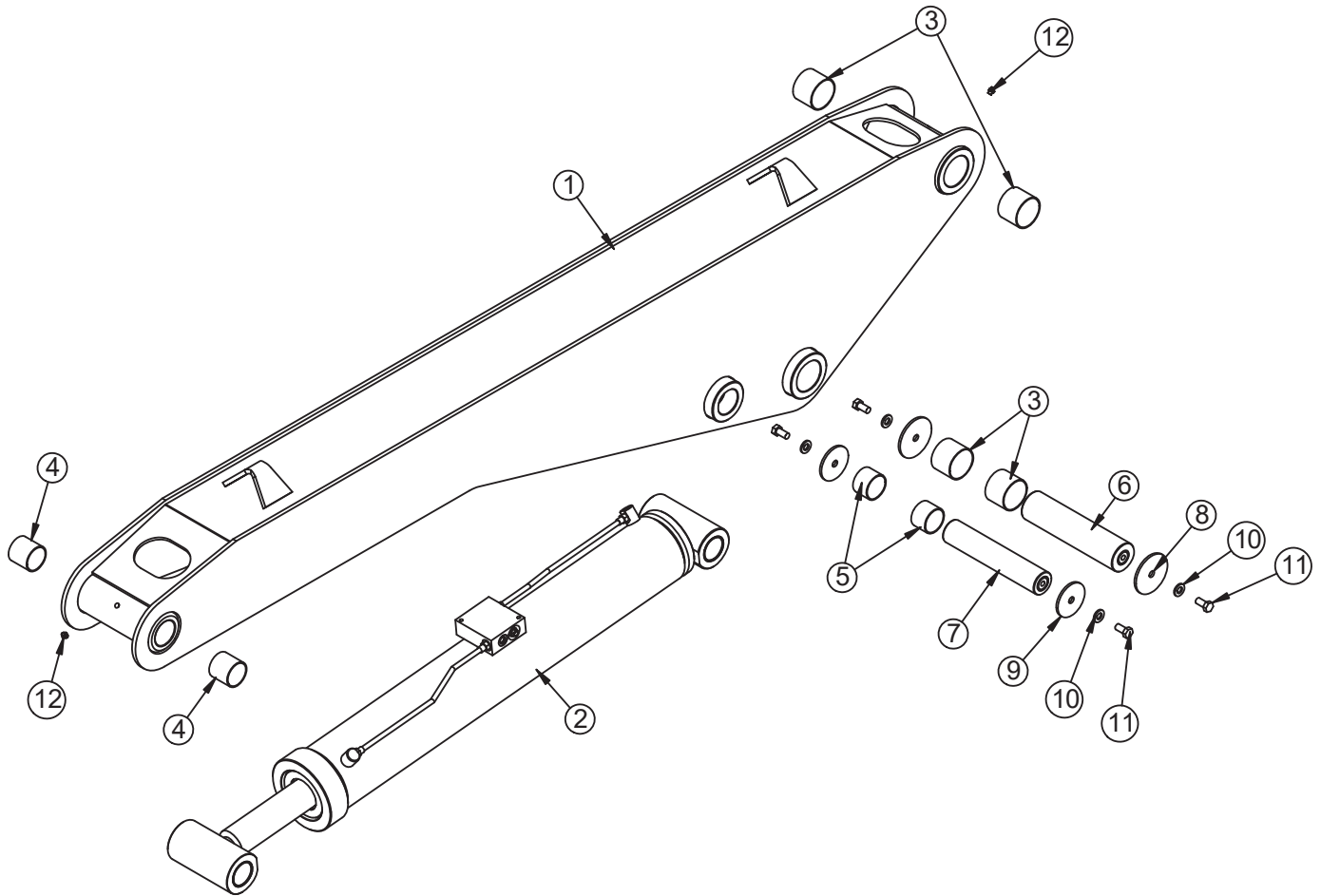
CYLINDER SEAL KIT: 65935

BUSING PART NUMBER: 9635

BUSHINGS INCLUDED IN 72398

BUSHINGS SHOWN FOR REFERENCE

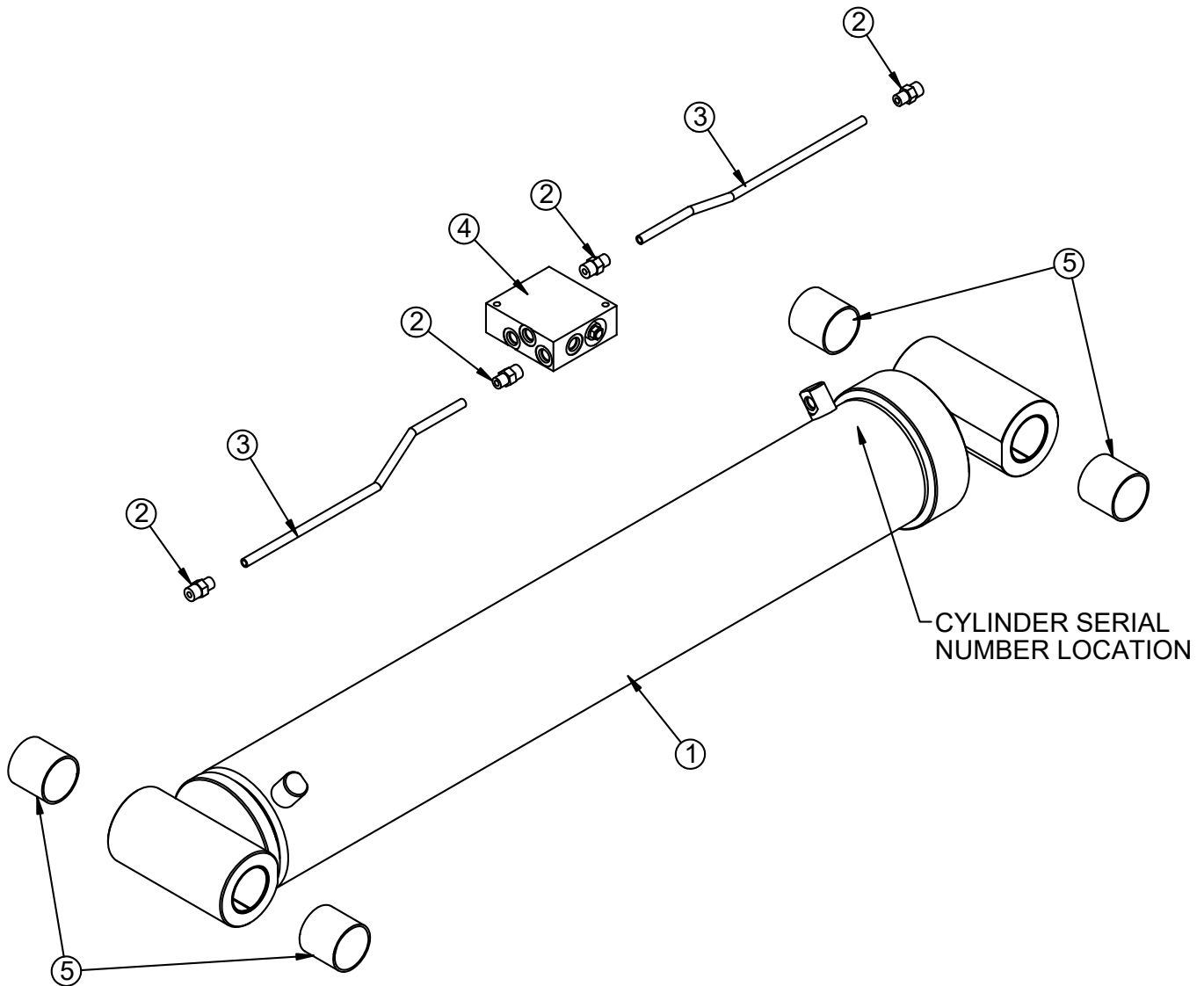
Main Boom Assembly - PN 29354



Main Boom Assembly - PN 29354 Parts List

PN 29354			
ITEM	PART	DESCRIPTION	QTY
1	28366	INNER BOOM 9000	1
2	29356	CYLINDER ASM 5.00X30.00	1
3	0635	BUSHING 40DXR32 GARLOCK	4
4	4381	BUSHING 32DXR32 2.00X2.00 GARLOCK	2
5	4380	BUSHING 32DXR24 2.00X1.50 GARLOCK	2
6	29358CR	PIN 2.50X10.13 D&T ZC	1
7	9709CR	PIN 2.00X10.19 D&T ZC	1
8	8377	PIN CAP 0.56X3.50X0.19 YZ	2
9	5145	PIN CAP 0.56X3.00X0.19 YZ	2
10	D0790	WASHER 0.50 FLAT GR8	4
11	10172	CAP SCR 0.50-13X1.00 HHGR8 ZY	4

Cylinder Assembly - PN 29356



Cylinder Assembly - PN 29356 Parts List

PN 29356			
ITEM	PART	DESCRIPTION	QTY
1	72401	CYLINDER 5.00X30.00 (4400 PSI)	1
2	0279	FTG 6-6 MFS-MORB STRAIGHT	4
3	29357	TUBE ASM 0.38X13.89 YZ	2
4	16154	MANIFOLD DOUBLE T11A 3500 PSI	1

NOTE:

C-BALANCE: 9803

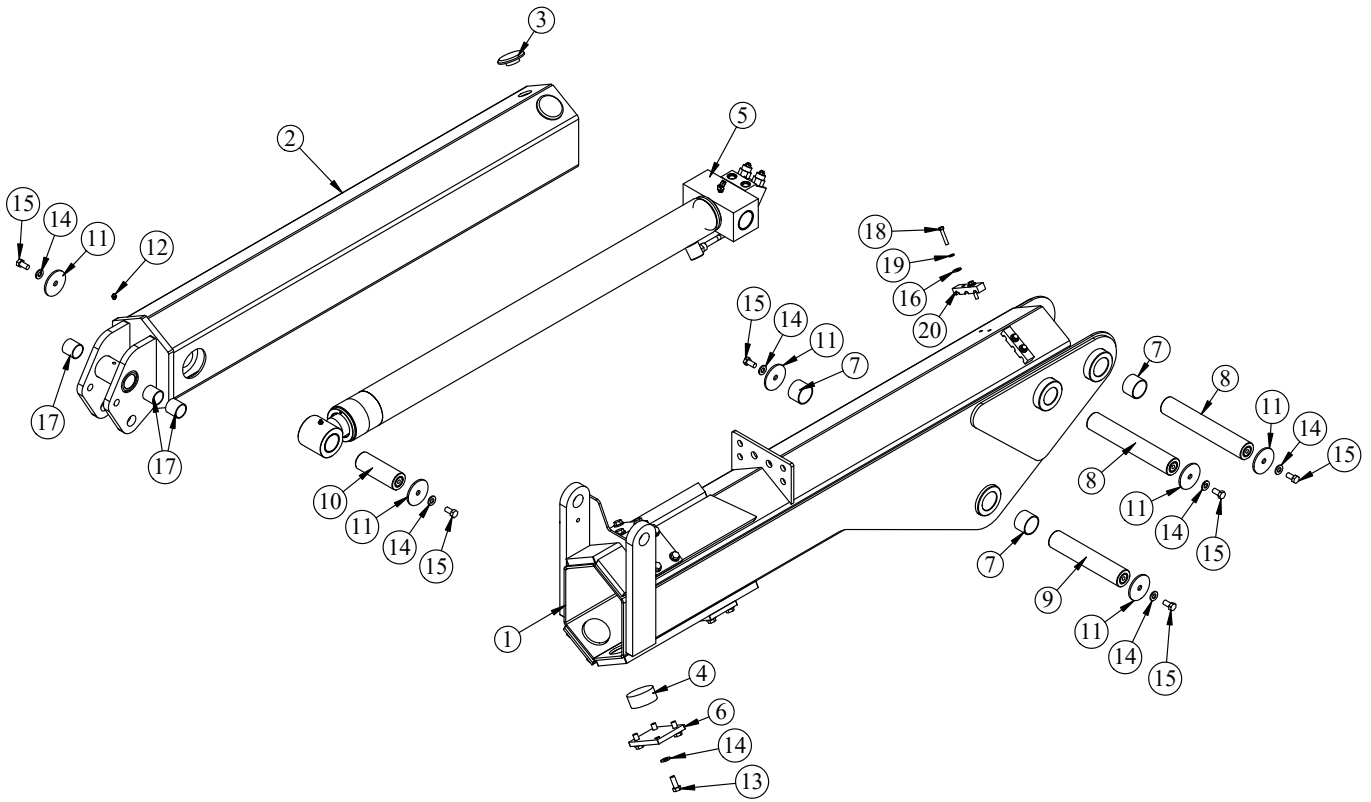
CYLINDER SEAL KIT: 76857

BUSHING PART NUMBER: 4381

BUSHINGS INCLUDED IN 72401

BUSHINGS SHOWN FOR REFERENCE

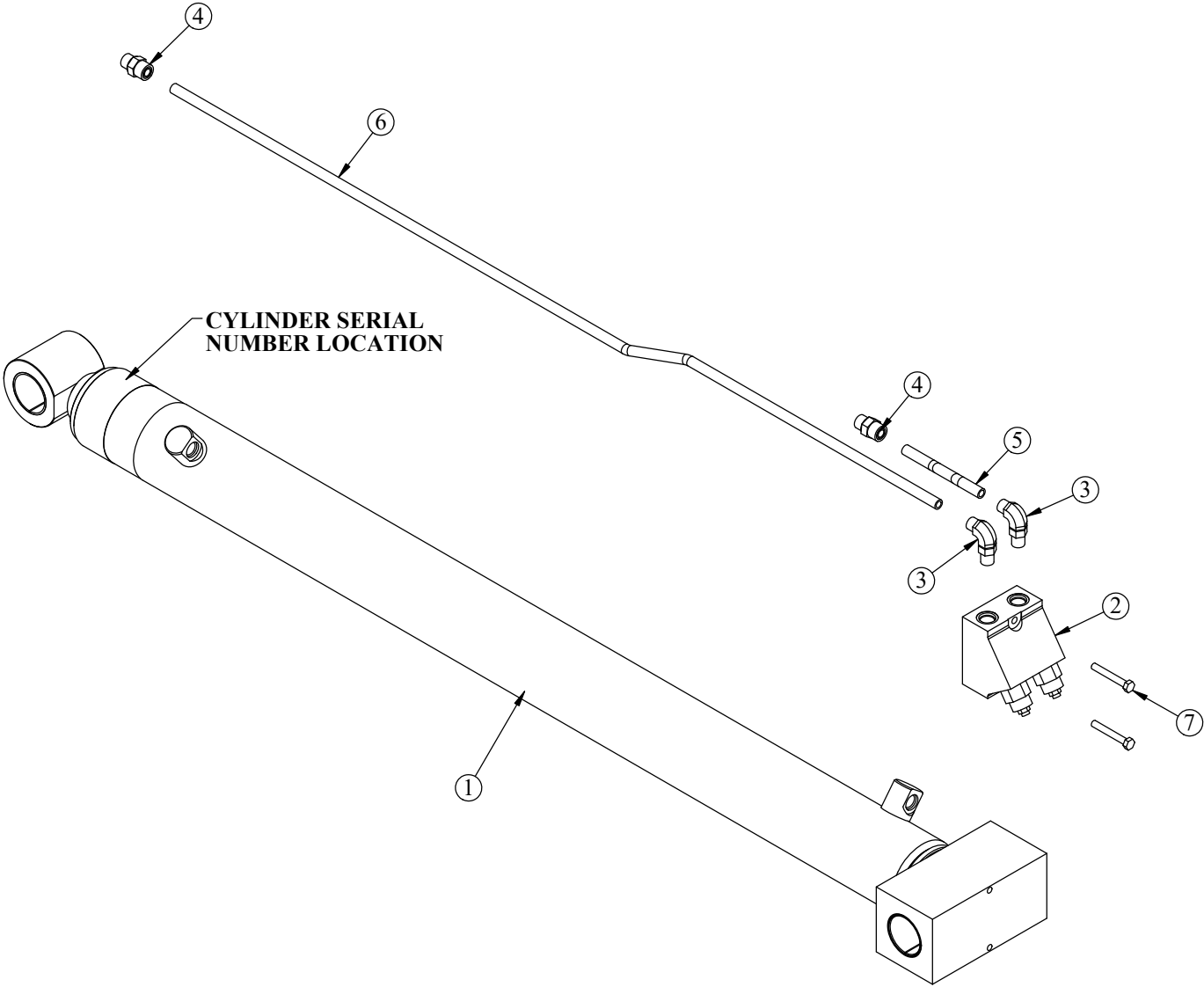
Extension Boom Assembly - PN 61204



Extension Boom Assembly - PN 61204

PN 61204			
ITEM	PART	DESCRIPTION	QTY
1	61205	OUTER BOOM 9000 V2	1
2	61206	EXT BOOM 9000 V2	1
3	30483	WEAR PAD 0.34X3.00 RND	2
4	9435	WEAR PAD 1.34X3.00 RND NYLATRON	6
5	73499	CYLINDER ASM EXT 13500	1
6	29551	COVER WEAR PAD 9000 PC WHITE	6
7	4380	BUSHING 32DXR24 2.00X1.50 GARLOCK	4
8	20042CR	PIN 2.00X12.13 D&T ZC	2
9	20043CR	PIN 2.00X10.38 D&T ZC	1
10	29552CR	PIN 2.00X5.63 D&T ZC	1
11	5145	PIN CAP 0.56X3.00X0.19 YZ	8
12	C1592	ZERK 1/8 NPT STRAIGHT	1
13	10666	CAP SCR 0.50-13X1.25 HHGR8	24
14	D0790	WASHER 0.50 SAE FLAT YELLOW GR8	32
15	10172	CAP SCR 0.50-13X1.00 HHGR8	8
16	0343	WASHER 0.31 USS FLAT	4
17	0067	BUSHING BPC-2426-24 1.50X1.50	3
18	0487	CAP SCR 0.31-18X1.75 HHGR5	4
19	0522	WASHER 0.31 LOCK	4
20	71305	CLAMP 3 HOSE 0.25 HYD 17000	2
REV. D			

Extension Cylinder Assembly - PN 73499



Extension Cylinder Assembly - PN 73499 Parts List

PN 73499			
ITEM	PART	DESCRIPTION	QTY
1	72402	CYLINDER 3.50X41.50 (4400 PSI)	1
2	53516	MANIFOLD CBAL DOUBLE T2A SUN CBDD-LJN-XAJ	1
3	1556	FTG 8-8 MFS-MAORB 90	2
4	1554	FTG 8-8 MFS-MORB STRAIGHT	2
5	53517	TUBE ASM 0.50X5.81 YZ	1
6	54312	TUBE ASM 0.50X50.28 YZ	1
7	C0927	CAP SCR 0.31-18X2.25 HHGR5	2
8	104021	FTG 2-2 MP-FP 45 GREASE LINE	1
9	104019	FTG 4-2 PTC-MP STRAIGHT GREASE LINE	1

NOTE:

C-BALANCE VALVE: C1090

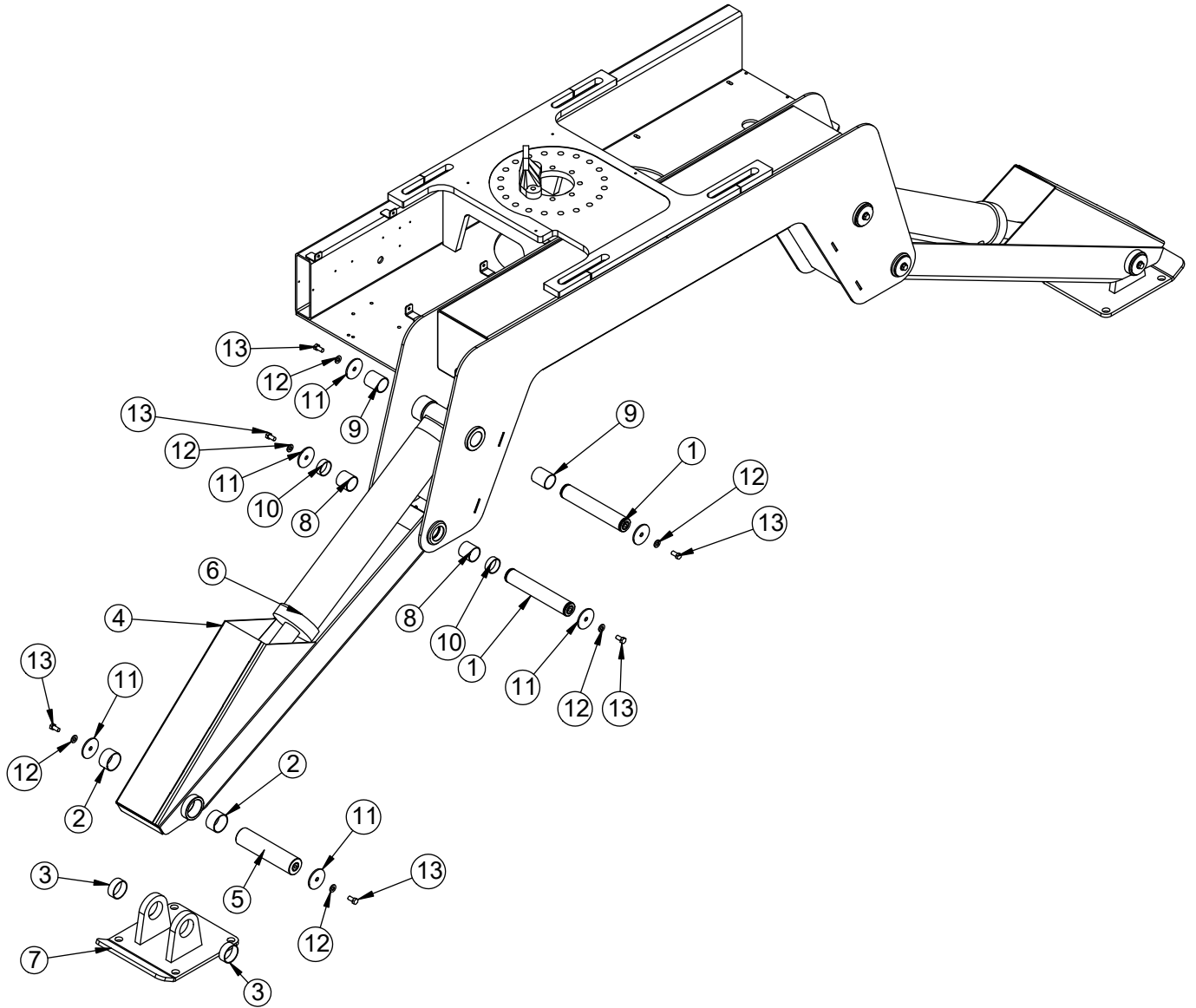
CYLINDER SEAL KIT: 76858

BUSHING PART NUMBER: 4380 (ROD END)

BUSHING PART NUMBER: 4381 (CAP END)

BUSHINGS INCLUDED IN 72402

Stabilizer Assembly - PN 61089



Stabilizer Assembly - PN 61089 Parts List

PN 61089			
ITEM	PART	DESCRIPTION	QTY
1	9710CR	PIN 2.00X11.69 SR/D&T	4
2	13817	BUSHING BPC40DXR24 2.50X1.50	4
3	13343	BUSHING BPC40DXR16 2.50X1.00	4
4	66281	OUTRIGGER LEG WLDMT 9000/TM20165	2
5	54322CR	PIN 2.50X10.38 D&T ZC	2
6	66283	CYLINDER 5.00X24.50 WHITE	2
7	66282	OUTRIGGER PAD 9000/TM20165	2
8	4381	BUSHING BPC32DXR32 2.00X2.00	4
9	4379	BUSHING BPC32DXR40 2.00X2.50	4
10	94747	BUSHING BPC32DXR16 2.00X0.75	4
11	5145	PIN CAP 0.56X3.00X0.19 YZ	12
12	D0790	WASHER 0.50 SAE FLAT YELLOW GR8	12
13	10172	CAP SCR 0.50-13X1.00 HHGR8	12
14	C1592	ZERK 1/8 NPT STRAIGHT	2

NOTES:

C-BALANCE VALVE C1090

CYLINDER SEAL KIT C6305

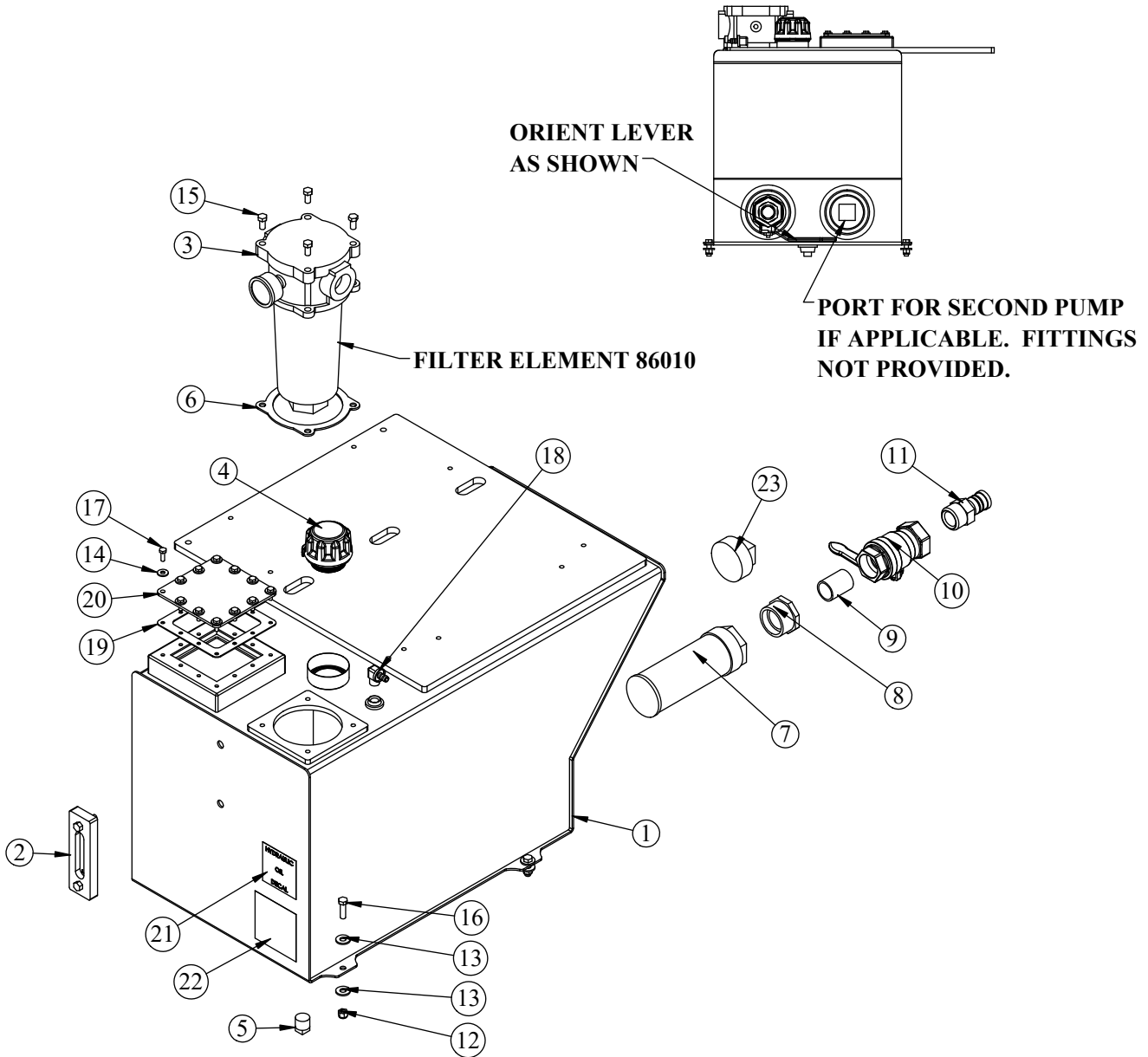
CYL BUSHINGS BASE END 4381

CYL BUSHINGS ROD END 0635

CYL BUSHINGS INCLUDED IN 66283

BASE WELDMENT SHOWN AS REFERENCE.

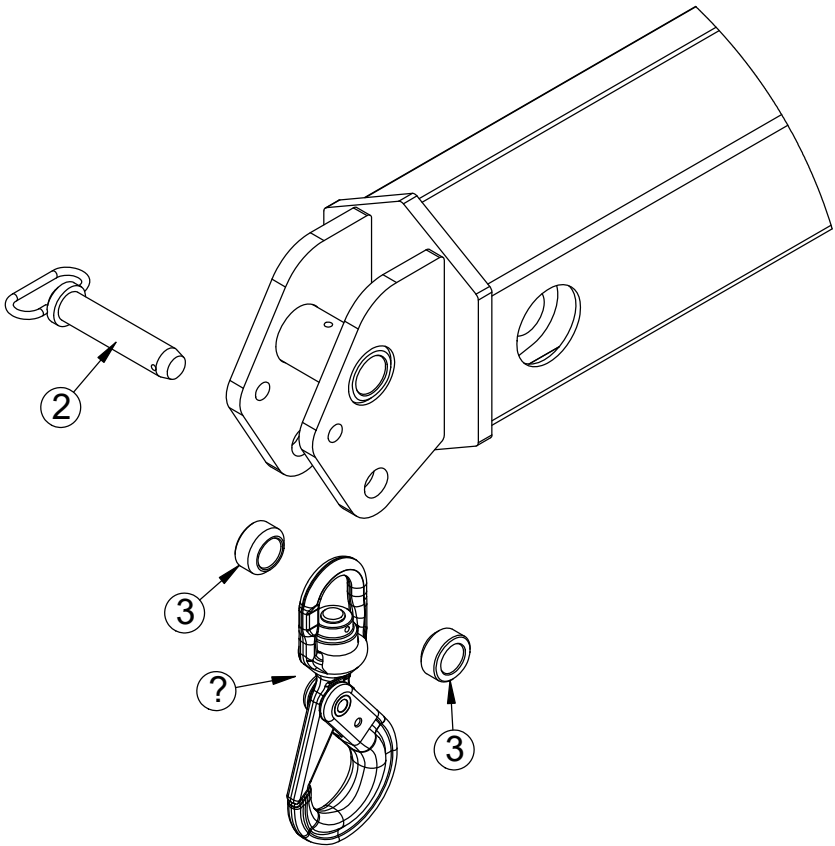
Reservoir Assembly - PN 100786



Reservoir Assembly - PN 100786 Parts List

PN 10076			
ITEM	PART	DESCRIPTION	QTY
1	100787	RSRVR 30 GAL V3 9000	1
2	15463	THERMO SIGHT GAUGE ZINGA SG-O5-A-T-N	1
3	85928	FILTER TANK TOP 20 FORB	1
4	81018	CAP FILL NO RELIEF ZINGA THREADED	1
5	C2126	PLUG 0.75 NPT SQ HD MAGNETIC	1
6	58396	GASKET RG-11 TANK TOP FILTER	1
7	C6327	FILTER STRAINER 35GAL TF-2030	1
8	60782	BUSHING 2.00X1.50 BLK	1
9	C1060	FTG 24-24XCLOSE MP-MP NIPPLE STRAIGHT BLK	1
10	37539	VALVE BALL 1.50	1
11	37541	FTG 24-24 MP-HB STRAIGHT	1
12	0347	NUT 0.38-16 HHGR5 NYLOC	4
13	0346	WASHER 0.38 USS FLAT	8
14	0340	WASHER 0.25 USS FLAT	12
15	0492	CAP SCR 0.38-16X0.75 HHGR5	4
16	0335	CAP SCR 0.38-16X1.25 HHGR5	4
17	0479	CAP SCR 0.25-20X0.75 HHGR5	12
18	71411	FTG HOSE 6-6 PL-MP 90 BRASS	1
19	11149	GASKET ARCTIC FOX HEATER #A-611	1
20	11442	PLATE COVER TANK HEATER FLANGE	1
21	42971	DECAL OIL FILTER CHANGE	1
22	5745	PLUG 3.00 NPT SQ HD CS BLK	1

Optional 6.7 Ton Hook Kit - PN 128833



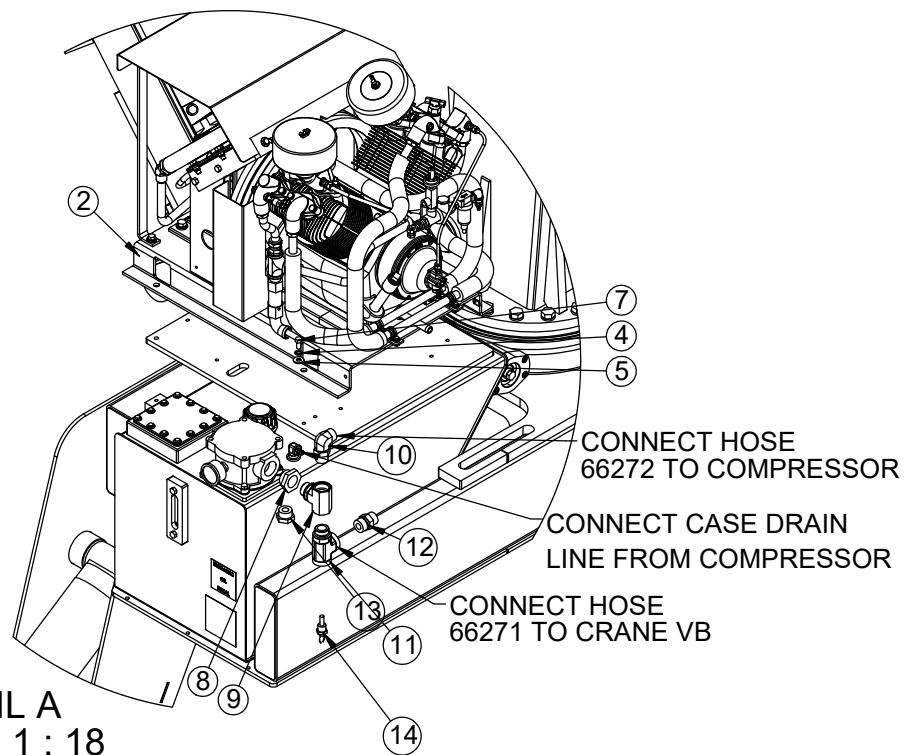
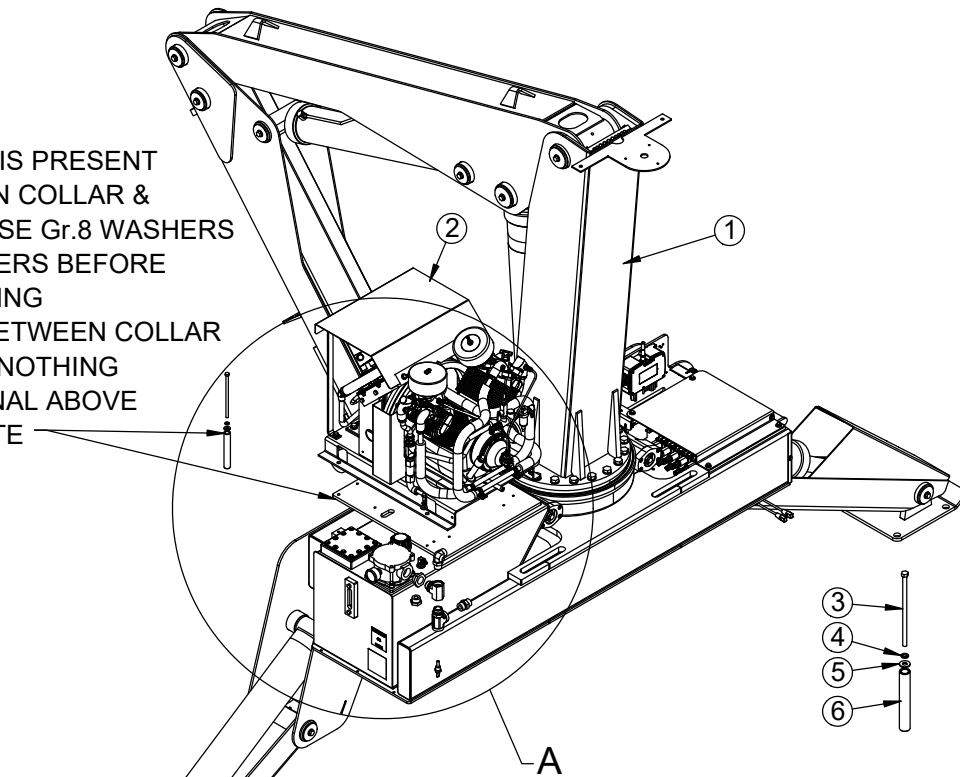
Optional 6.7 Ton Hook Kit - PN 128833 Parts List

PN 128833

ITEM	PART	DESCRIPTION	QTY
1	133522	HOOK 6.7 TON SWIVEL W/ BEARING SELF LOCKING	1
2	5192	PIN HITCH 1.25X5.13	1
3	28496	COLLAR 1.28X2.00X1.00 PC BLACK	2
REV. A			

Compressor Mounting - PN 134013

IF A GAP IS PRESENT
BETWEEN COLLAR &
PLATE, USE Gr.8 WASHERS
AS SPACERS BEFORE
TIGHTENING
- ONLY BETWEEN COLLAR
& PLATE NOTHING
ADDITIONAL ABOVE
THE PLATE



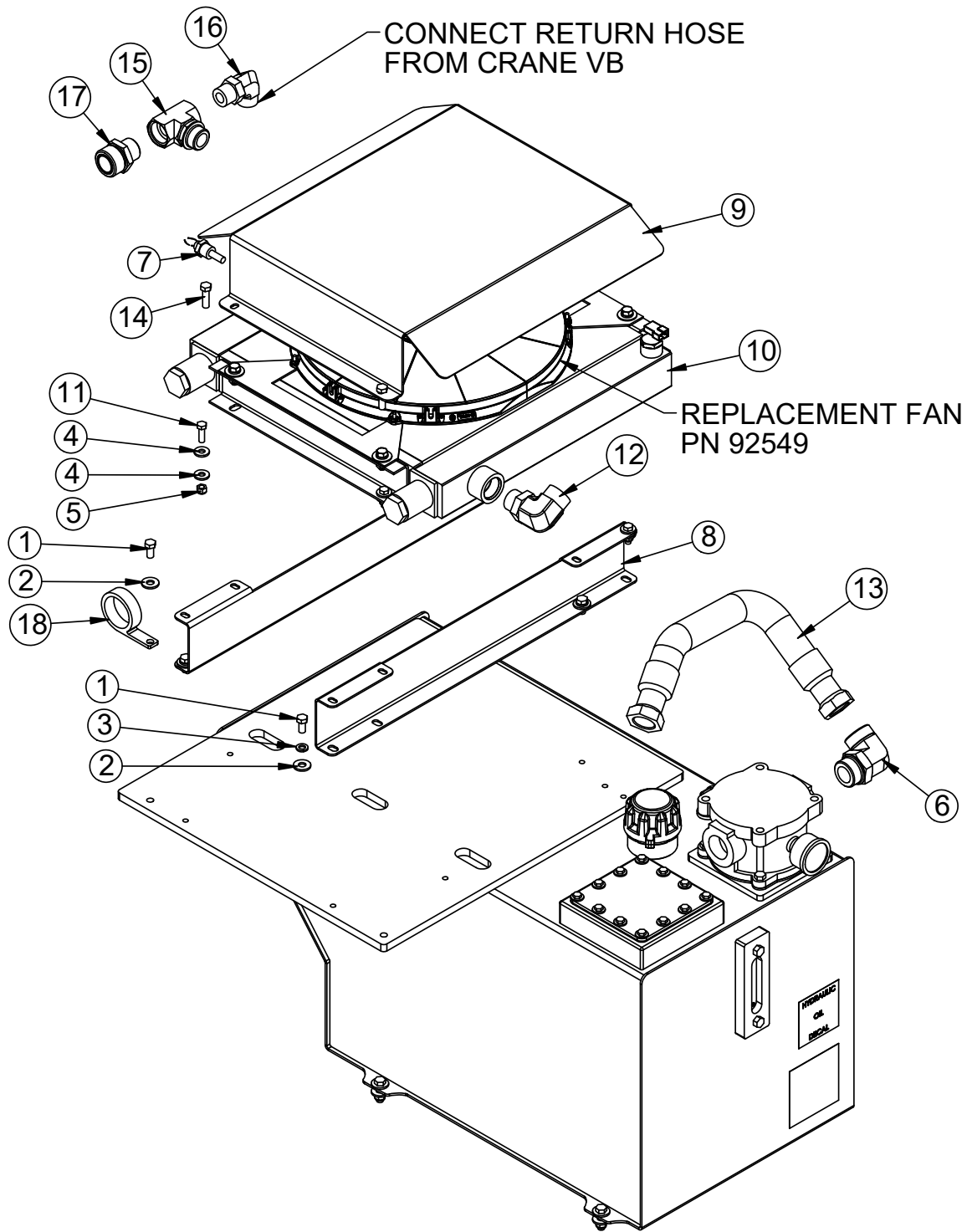
Compressor Mounting - PN 134013 Parts List

PN 134013			
ITEM	PART	DESCRIPTION	QTY
1	134014	CRANE 9000 V3 900MHZ	1
2	58970	CPRSR ASM SHD66 W/RSM WORSRVR	1
3	90913	CAP SCR 0.38-16X8.00 HHGR5	2
4	0523	WASHER 0.38 LOCK	4
5	0346	WASHER 0.38 USS FLAT	4
6	90915	COLLAR 0.69X1.00X6.56	2
7	0492	CAP SCR 0.38-16X0.75 HHGR5	2
8	D0199	FTG 20-16 MORB-FORB STRAIGHT REDUCER	1
9	65936	FTG 16-16-16 FORB-FORB-MAORB TEE	1
10	22063	FTG 12-16 MFS-MAORB 90	1
11	64511	FTG 16-16-16 MAORB-FORB-FORB TEE	1
12	C2269	FTG 12-16 MFS-MORB STRAIGHT	1
13	D0549	FTG 16-8 MORB-FORB STRAIGHT REDUCER	1
14	123756	SWITCH TEMP NC TT-F5B-170R-PD	1
REV. INITIAL RELEASE			

NOTES:

NOT SHOWN: 66272 RETURN HOSE - FROM COMP. TO TANK

Cooler Assembly - PN 86510



Cooler Assembly - PN 86510 Parts List

PN 86510			
ITEM	PART	DESCRIPTION	QTY
1	0492	CAP SCR 0.38-16X0.75 HHGR5	5
2	0346	WASHER 0.38 USS FLAT	5
3	0523	WASHER 0.38 LOCK	4
4	0343	WASHER 0.31 USS FLAT	8
5	0342	NUT 0.31-18 HHGR5 NYLOC	4
6	64276	FTG 20-20 MFS-MAORB 90	1
7	123756	SWITCH TEMP NC TT-F5B-170R-PD	1
8	86514	BRKT COOLER MNT V2 9000	2
9	86515	COVER COOLER V2 9000	1
10	85790	COOLER OIL MAR-32	1
11	C0922	CAP SCR 0.31-18X1.00 HHGR5	4
12	51275	FTG 20-16 MFS-MAORB 90	1
13	51294	HOSE 1.25(200PSI)-20FFSS SHORT-20FFSS SHORT-20CL	1
14	0335	CAP SCR 0.38-16X1.25 HHGR5	4
15	65936	FTG 16-16-16 FORB-FORB-MAORB TEE	1
16	22063	FTG 12-16 MFS-MAORB 90	1
17	19799	FTG 20-16 MFS-MORB STRAIGHT	1
18	D1447	CLAMP 2.00 HK 3317	1

NOTES:
RESERVOIR ASM SHOWN FOR REFERENCE.

Radio Transmitter - PN 89149/93084



PN 89149 / 93084

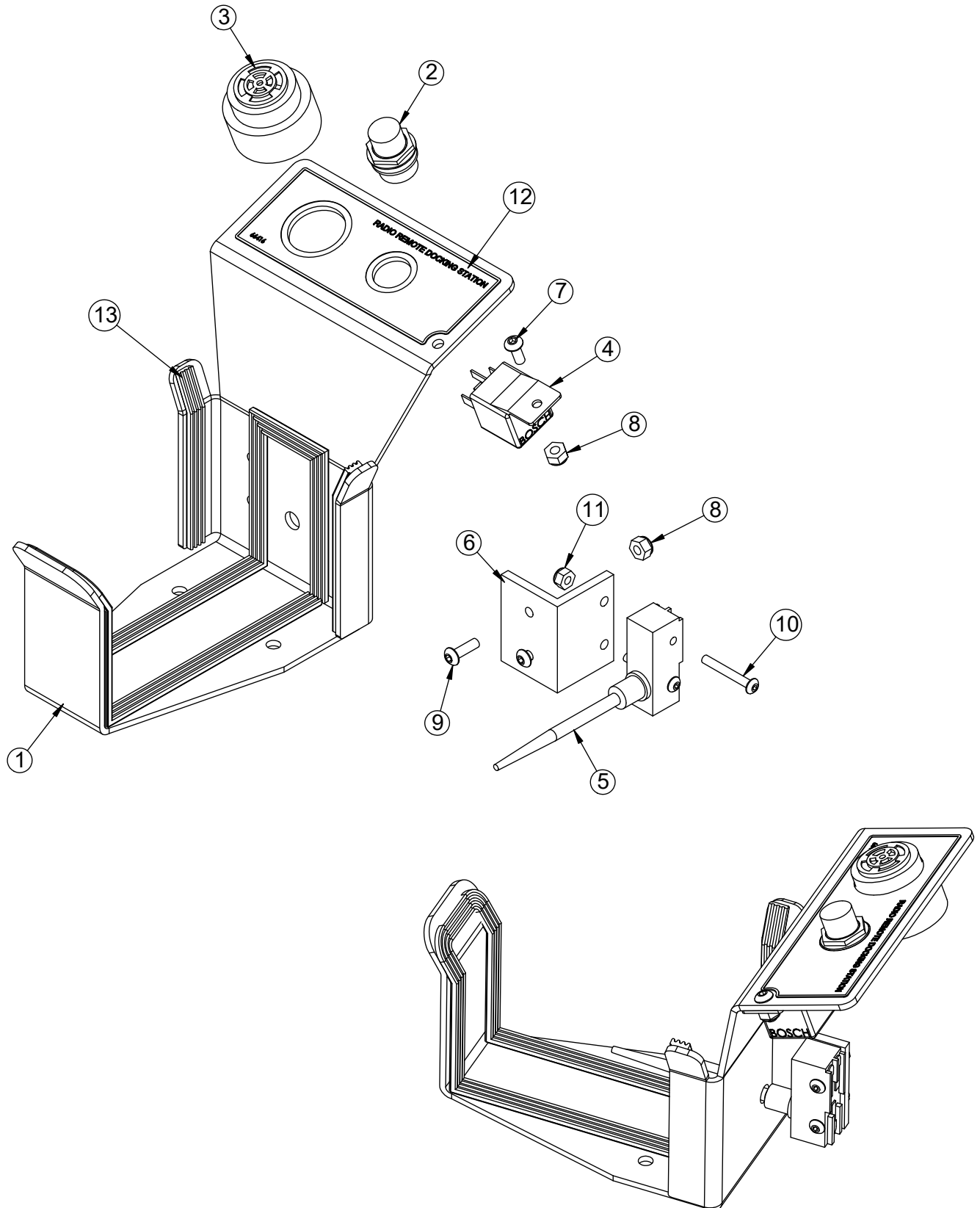
ITEM	PART	DESCRIPTION	QTY
1	95026	2-WAY MOMENTARY TOGGLE SWITCH	1
2	95027	TOGGLE SWITCH RUBBER BOOT	3
3	95025	SWITCH PADDLE SCANRECO (LABEL KIT INCLUDED)	6
4*	89474	3-WAY MOMENTARY TOGGLE SWITCH	2
5	95030	E-STOP SWITCH	1
6	95028	PUSH BUTTON START SWITCH	1
7	95029	PUSH BUTTON SWITCH BOOT	1

* "OPTION" SWITCH MAY OR MAY NOT BE ACTIVE DEPENDING ON FACTORY SETTINGS; ADDITIONAL FUNCTIONALITY DEPENDENT ON USER.

This page left intentionally blank.

Transmitter Docking Station Asm (Opt.) - PN 97334

SCANRECO BELLY BOX G2B-MINI



Transmitter Docking Station (Opt.) - PN 97334 Parts List

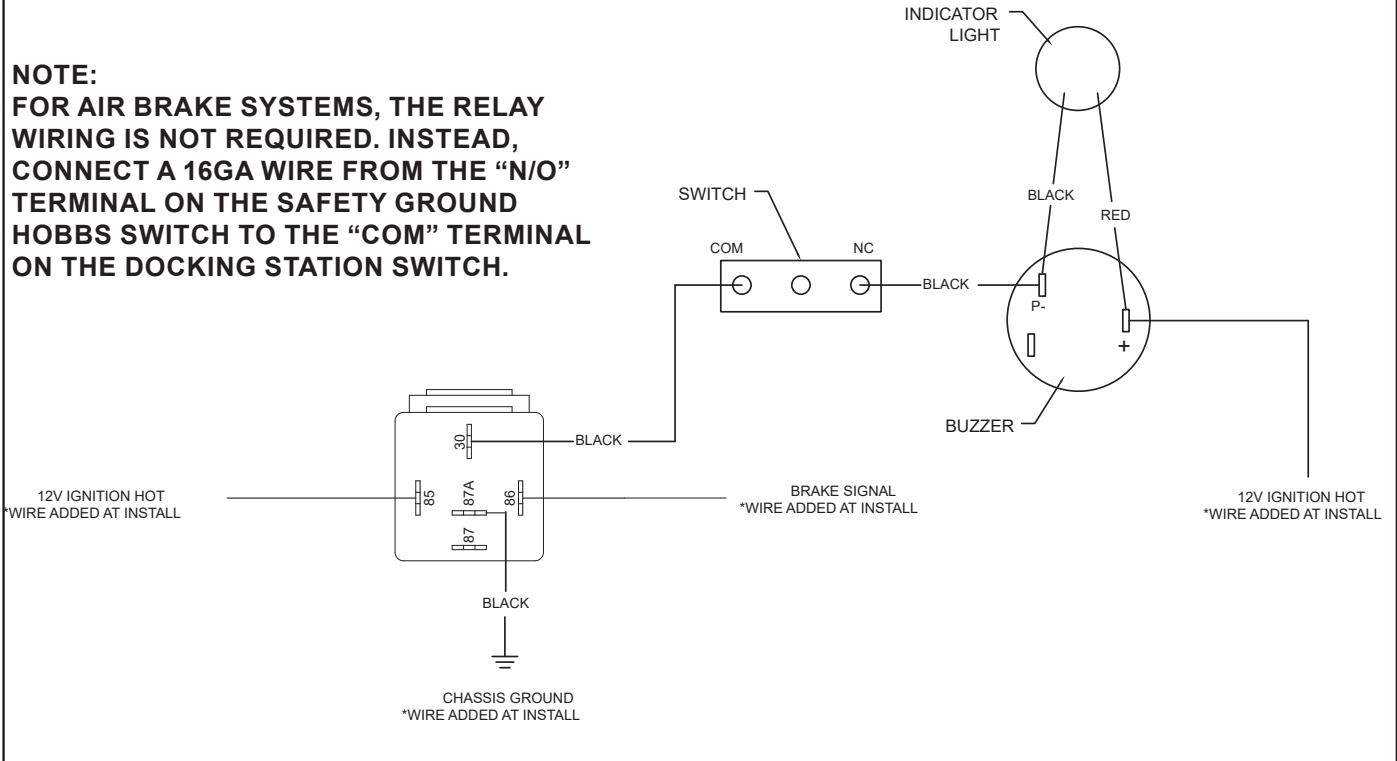
PN 97334			
ITEM	PART	DESCRIPTION	QTY
1	97470	BRKT RADIO STOW SCANRECO 89149/89150	1
2	26288	LIGHT INDICATOR RED FORCE PTO	1
3	26031	BACKUP ALARM PIEZO JAMECO 123537	1
4	C6072	RELAY BOSCH 20-30 AMP	1
5	66413	SWITCH SPRING ROD OMRON Z-15GNJ55	1
6	66411	ANGLE AL SWITCH MOUNT DOCK STATION HET NOVA	1
7	D1711	CAP SCR #10-24X0.50 BTNHD SS	1
8	C4956	NUT #10-24 HH NYLOC SS	3
9	59075	CAP SCR #10-24X0.63 BTNHD ZC	2
10	66412	SCREW #8-32X1.25 BTNHD SS	2
11	22186	NUT #8-32 HH NYLOC SS	2
12	66416	DECAL DOCKING STATION HET NOVA 41922	1
13	17162	WEATHERSTRIP RIBBED 0.38X0.13	3.5

PARTS NOT SHOWN		
PART	DESCRIPTION	QTY
65989	WIRING DIAGRAM DOCKING STATION 65984	1
C0072	TERML RING #10 16-14GA	6
C0080	TERML QC F 0.19 16-14GA 0.20 TAB FULLY INS	4
C2607	TERML QC PIGGYBK 0.25 16-14GA	1
C4689	WIRE 14GA (RM) RED SAE J-1128	1.5
C4691	WIRE 14GA (RM) BLACK SAE J-1128	3
C4860	DECAL BALLAST MSTR OPERATION	1

Wiring Diagram Docking Station - PN 65989

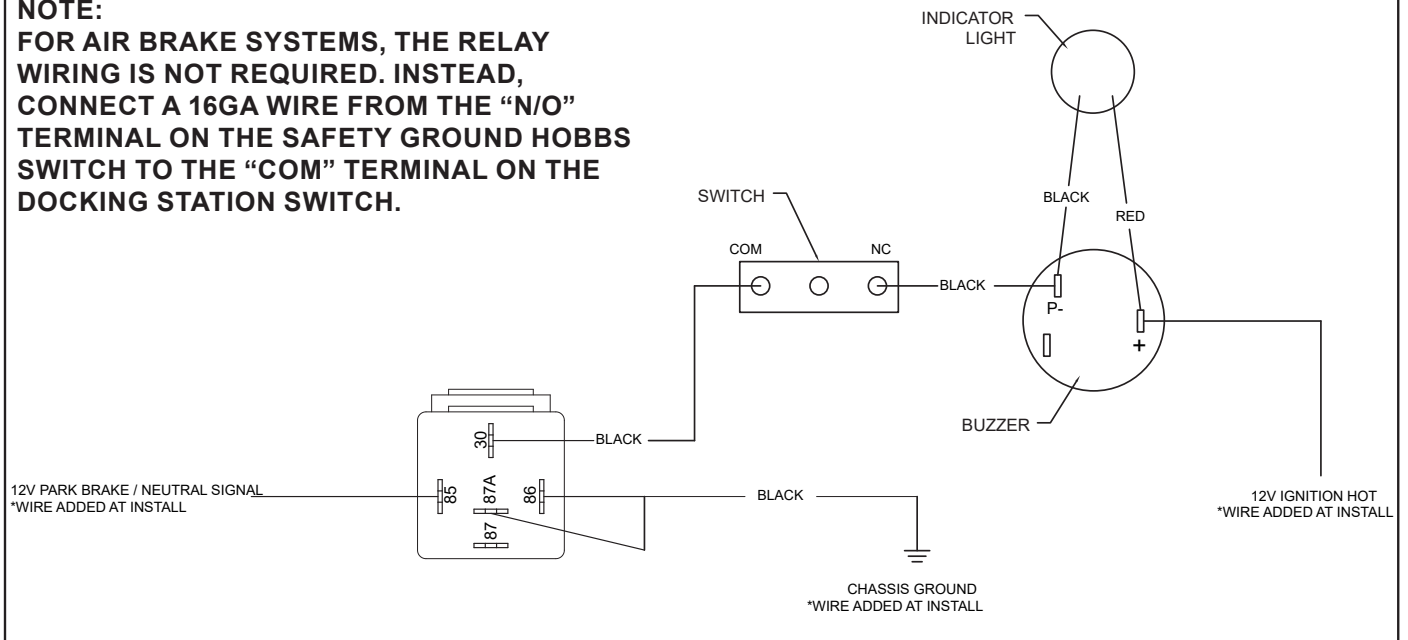
NEGATIVE BRAKE SIGNAL

NOTE:
FOR AIR BRAKE SYSTEMS, THE RELAY WIRING IS NOT REQUIRED. INSTEAD, CONNECT A 16GA WIRE FROM THE "N/O" TERMINAL ON THE SAFETY GROUND HOBBS SWITCH TO THE "COM" TERMINAL ON THE DOCKING STATION SWITCH.



POSITIVE BRAKE SIGNAL

NOTE:
FOR AIR BRAKE SYSTEMS, THE RELAY WIRING IS NOT REQUIRED. INSTEAD, CONNECT A 16GA WIRE FROM THE "N/O" TERMINAL ON THE SAFETY GROUND HOBBS SWITCH TO THE "COM" TERMINAL ON THE DOCKING STATION SWITCH.





Subject to Change without Notification.
© 2024 Stellar Industries, Inc.