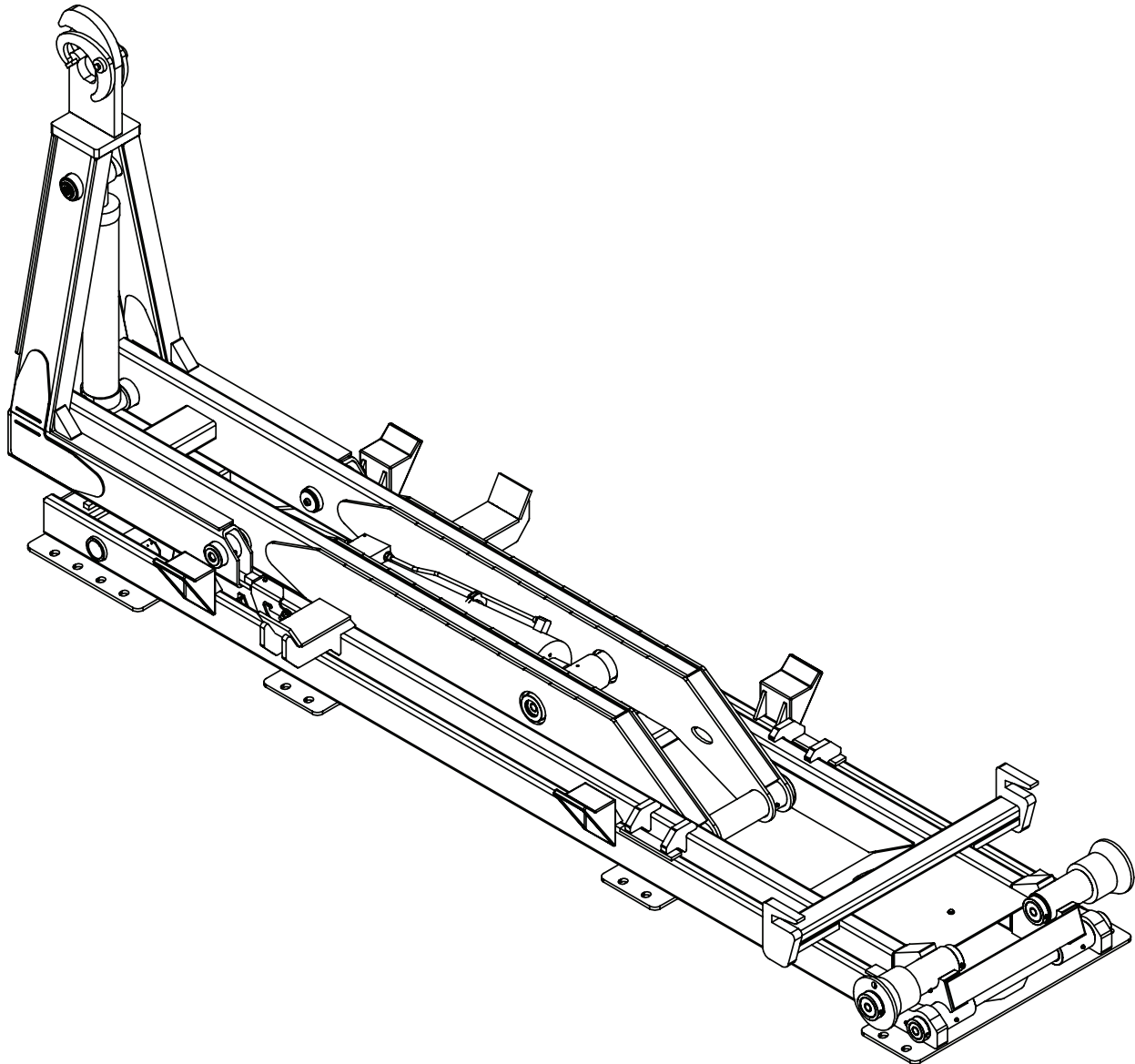




# 138-18-34 Shuttle Hooklift Owner's Manual

Installation • Assembly Drawings • Parts



**Stellar Industries, Inc.**  
190 State Street  
PO Box 169  
Garner, IA 50438  
800-321-3741  
Fax: 641-923-2811

[www.stellarindustries.com](http://www.stellarindustries.com)

Subject to Change without Notification.  
© 2022 Stellar Industries, Inc.

Rev 2  
PN 28071



# Table of Contents

---

Introduction	iv
Hooklift Nomenclature	v
Serial Tag Location	vi
<b>Chapter 1 - Specifications</b>	<b>1</b>
Model 138-18-34 Shuttle Specifications	1
Acceptable Subframe Dimensions - Model 138-18-34	2
<b>Chapter 2 - Installation</b>	<b>3</b>
General Installation	3
Installer Notice	3
Torque Data Chart	4
Installation Note	5
Step 1: Set the hooklift onto the truck frame	5
Step 2: Drill mounting holes	6
Step 3: Install bumper	7
Step 4: Install tie-downs	7
Step 5: Install taper tower (If applicable)	8
Step 6: Install hydraulic reservoir and valve bank	8
Reservoir Assembly with Cable Controls - PN 86463	9
Reservoir Assembly with Air Controls - PN 86467	10
Reservoir Subassembly - PN 86006	11
Valve Bank Parts Drawing	12
Step 7: Install PTO and pump	13
Face Seal/O-Ring Size Chart	14
Step 8: Route hydraulic hoses	14
Hose Kit - PN 98020	15
Power Beyond VDM8 Valve	16
Step 9: Route Electrical Components	17
Step 10: Install cab and PTO controls	18
Cable Controls	18
Air Controls	19
Step 11: Install Hoist Up Alarm - PN 83115	20
Step 12: Install mud flaps and fenders	21
Poly Tandem Fender Assembly - PN 58217	21
Steel Tandem Fender Assembly - PN 100617	22
Step 13A: Apply Hooklift Assembly Decals	23
Step 13B: Apply Chassis Decals	24
Step 14: Fill reservoir and activate hydraulic flow	25
Step 15: Operate hooklift	25
Set System Relief Pressure	26
<b>Chapter 3 - Assembly Drawings</b>	<b>27</b>
Base Assembly - PN 90450	27
Plunger Valve Assembly - PN 98018	27
Dump Assembly - PN 92702	28
Secondary Assembly - PN 93513	29
Tilt Assembly - PN 92762	30
Main Cylinder - PN 44341	31
Tilt Cylinder - PN 23462	32
Optional Tab Alarm Kit - PN 43120	33
Optional Tab Alarm Wire Harness - PN 26291	34
Optional Proximity Switch Wire Harness - PN 26416	35
Optional Fender Kit - PN 115695	36
Optional Fender Kit - PN 115695 cont.	37
Optional Threshold Plate Kit - PN 118281	38

# Introduction

A copy of this manual is provided with every hooklift and can be found in the hard plastic manual case that is installed on the chassis. A copy of this manual shall remain with the hooklift at all times.

Throughout the manual, three signal words will be used to bring attention to important items:

## **NOTICE**

A NOTICE signal word indicates a practice not related to physical injury.

## **⚠ WARNING**

A WARNING signal word indicates a hazardous situation which, if not avoided, could result in death or serious injury.

## **⚠ DANGER**

A DANGER signal word indicates a hazardous situation which, if not avoided, will result in death or serious injury.

Information contained within this manual does not cover operation, maintenance, or troubleshooting. Please refer to the General Shuttle Hooklift Manual for details on these items.

This manual is not binding. Stellar Industries, Inc. reserves the right to change, at any time, any or all of the items, components, and parts deemed necessary for product improvement or commercial/production purposes. This right is kept with no requirement or obligation for immediate mandatory updating of this manual.

In closing:

If more information is required or technical assistance is needed, or if you feel that any part of this manual is unclear or incorrect, please contact the Stellar Customer Service Department by phone at 800-321-3741 or email at [service@stellarindustries.com](mailto:service@stellarindustries.com).

**For Technical Questions, Information, Parts, or Warranty, Call Toll-Free at  
800-321-3741**

Hours: Monday - Friday, 8:00 a.m. - 5:00 p.m. CST

Or email at the following addresses:

**Technical Questions, and Information**

[service@stellarindustries.com](mailto:service@stellarindustries.com)

**Order Parts**

[parts@stellarindustries.com](mailto:parts@stellarindustries.com)

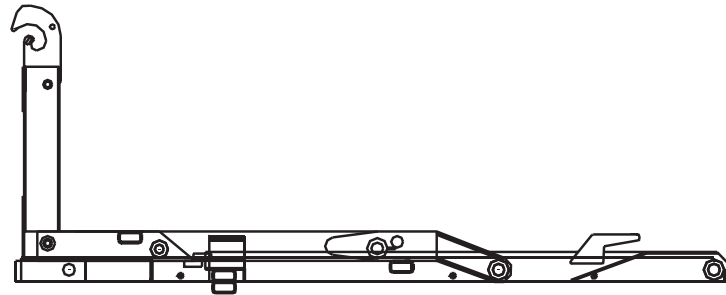
**Warranty Information**

[warranty@stellarindustries.com](mailto:warranty@stellarindustries.com)

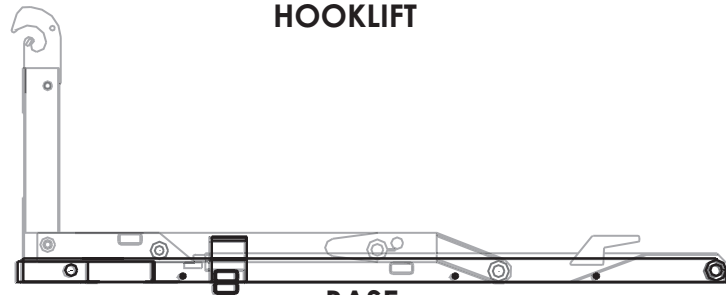
# Hooklift Nomenclature

The Stellar® Shuttle is a hydraulic, body-loading device when mounted on a truck chassis. It can handle a multitude of bodies ranging from flatbeds to recycling containers and dump bodies.

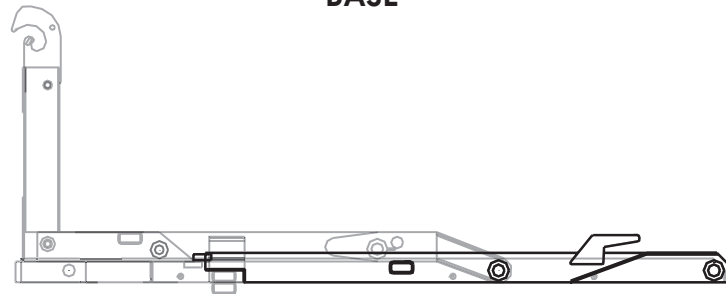
The Shuttle consists of four basic parts: the base, dump, secondary, and tilt sections. Please take the time to familiarize yourself with the various components. Knowing the proper terminology is necessary to get the full benefit of this manual.



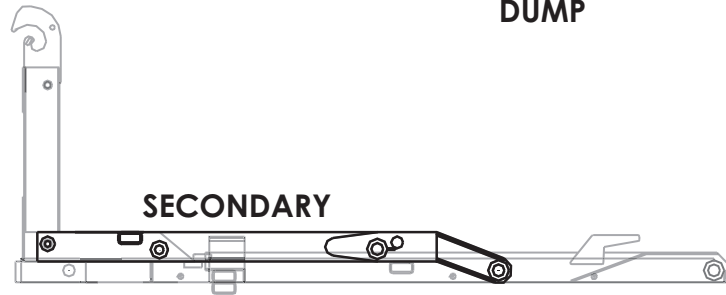
**HOOKLIFT**



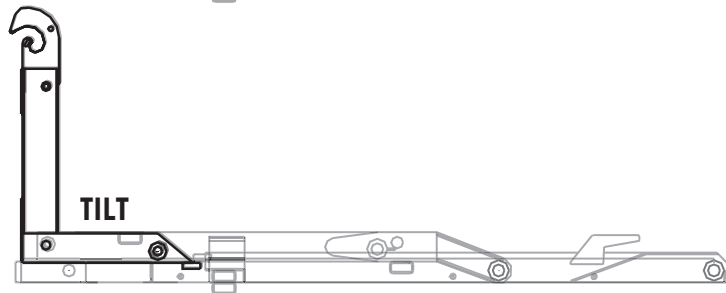
**BASE**



**DUMP**



**SECONDARY**



**TILT**

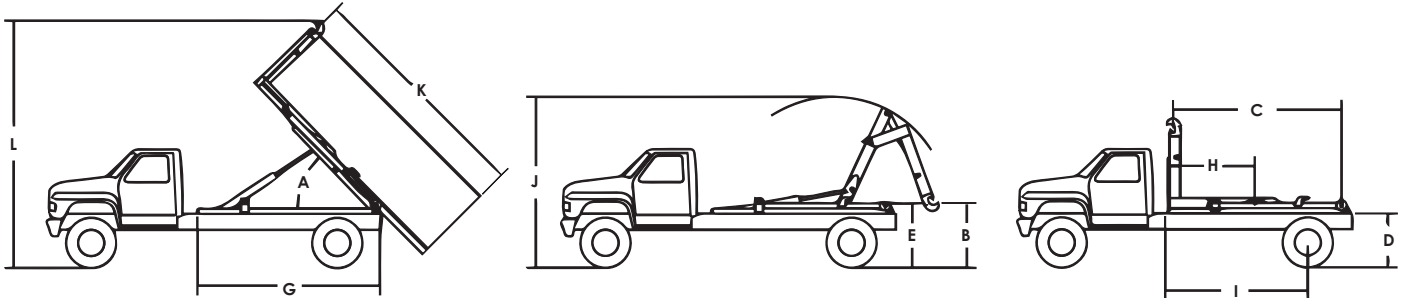
# Serial Tag Location

The serial tag should be located on the right side (passenger side) of the base assembly:



# Chapter 1 - Specifications

## Model 138-18-34 Shuttle Specifications

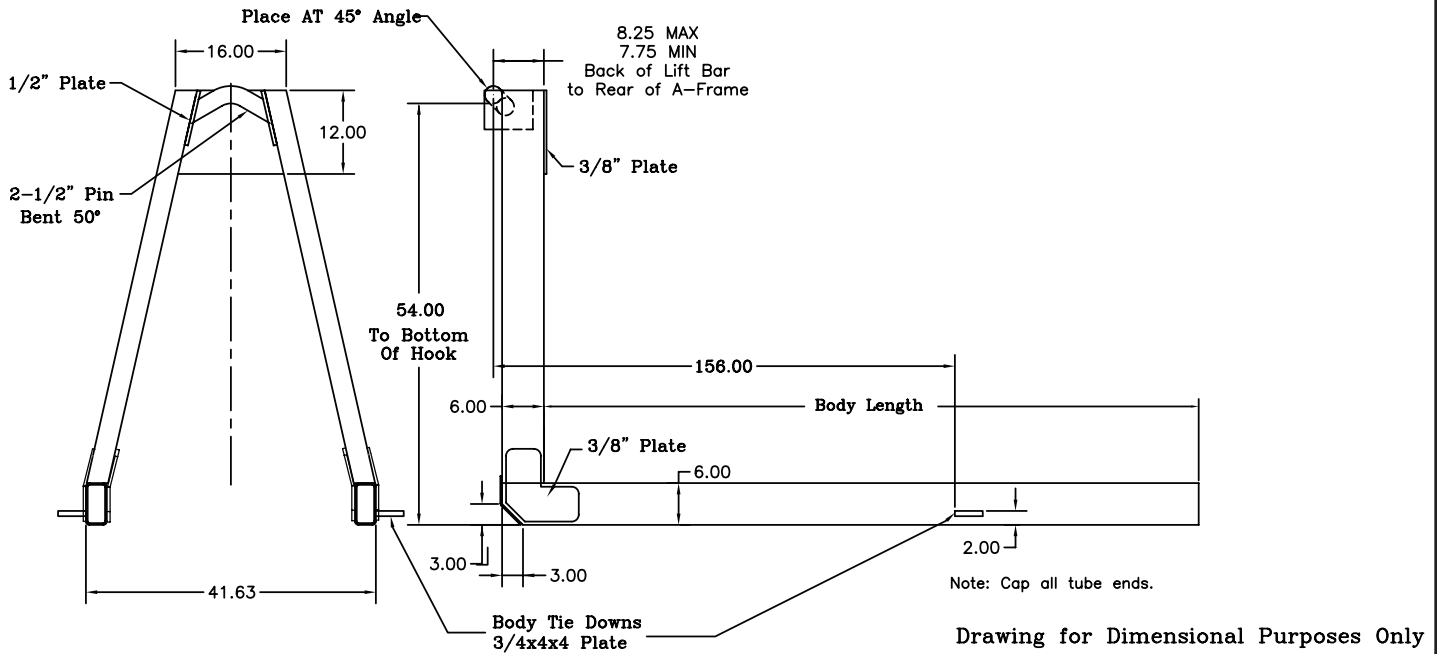


Model 138-18-34 Shuttle		
	Lifting/Dumping Capacity	34,000 lbs (15,422 kg)
<b>A</b>	Dump Angle	52°
<b>B</b>	Lowest hook Height	39" (99 cm)
<b>C</b>	Effective Length	176" (447 cm)
<b>D</b>	Truck Frame Height	41" (104 cm)
<b>E</b>	Hooklift Height	52.31" (132.87 cm)
<b>G</b>	Hooklift Length	188" (478 cm)
<b>H</b>	Hooklift Center of Gravity	81" (206 cm)
<b>I</b>	Chassis Cab to Axle	150" to 158" (381 to 401 cm)
<b>J</b>	Max Height When Loading	172" (437 cm)
<b>K</b>	Longest Body to Dump	234" (594 cm)
<b>L</b>	Max Height when Dumping	232" (589 cm)
	Operating Pressure	4200 psi
	Hydraulic Flow	Not to exceed 24 GPM
	Shipping Weight	4,100 lbs (1,860 kg)
	Hook Height	54" (137 cm)
	Shipping Dimensions (LxHxW)	188" x 76" x 49"
	Minimum Truck GVWR	34,000
	RBM	2,200,000
	Load Angle w/Shortest Body Length	36°
	Recommended Body Lengths*	15' to 17.5' (4.57 to 5.33 m)
	Recommended Flatbed Body Lengths**	to 19.5' (5.94 m)

\* Assumes 3ft. overhang from center of rear roller pin.

\*\* Assumes 5ft. overhang from center of rear roller pin - May require bumper and latch options.

# Acceptable Subframe Dimensions - Model 138-18-34



## PN 98939

Minimum recommended rail construction per number of rear rollers on loader.		
	Single	Double
138-18-34	6x3x3/8 & 1/2x3 Plt	6x3x3/8 & 1/2x3 Plt



# Chapter 2 - Installation

## General Installation

This chapter is designed to serve as a general guide for the installation of a Stellar® Shuttle 138-18-34 Hooklift. Each installation is considered unique so certain portions of this chapter may or may not apply to your direct application. If a question should arise during the installation process, please contact Stellar Customer Service at (800) 321 3741.

PTO and Pump installation instructions are provided by the corresponding manufacturers. For more information on which PTO and Pump fit your application, please contact your local Stellar Distributor or Stellar Customer Service.

**⚠ WARNING** Do not install this hooklift on a chassis not capable of handling the loads imposed on it. Failure to do so may result in serious injury or death.

**NOTICE** Do not weld or drill holes into the side wall of the base tubes.

### Hooklift Mounting and Assembly

Study names and locations of the parts and familiarize yourself with the hooklift before starting the assembly. Reading the step-by-step instructions that follow will be helpful.

#### Assembly

Select an area for assembly that will be large enough to accommodate the completed unit. The surface of the work area should be as level as possible. Use the proper hand tools to ensure proper bolt tightness. Refer to the torque data chart in this chapter for the recommended torque values for different sizes of bolts.

#### Model Number

Know the model number of the Stellar® Hooklift being mounted. Use this model number whenever referring to the assembly or parts listing pages. The number is stamped on the name plate which is located on the front frame member.

## Installer Notice

According to Federal Law (49 cfr part 571), each final-stage manufacturer shall complete the vehicle in such a manner that it conforms to the standards in effect on the date of manufacture of the incomplete vehicle, the date of final completion, or a date between those two dates. This requirement shall, however, be superseded by any conflicting provisions of a standard that applies by its terms to vehicles manufactured in two or more stages.

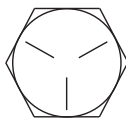
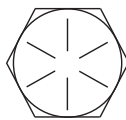
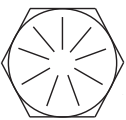
Therefore, the installer of Stellar® Hooklifts is considered one of the manufacturers of the vehicle. As such a manufacturer, the installer is responsible for compliance with all applicable federal and state regulations. They are required to certify that the vehicle is in compliance with the Federal Motor Vehicle Safety Standards and other regulations issued under the National Traffic and Motor Vehicle Safety Act.

Please reference the Code of Federal Regulations, title 49 - Transportation, Volume 5 (400-999), for further information, or visit <http://www.gpoaccess.gov/nara/index.html> for the full text of Code of Federal Regulations.

## Torque Data Chart

When using the torque data in the chart, the following rules should be observed:

- Bolt manufacturer's particular specifications should be consulted when provided.
- Flat washers of equal strength must be used.
- All torque measurements are given in foot-pounds. To convert to inch-pounds, multiply by 12.
- Torque values specified are for bolts with residual oils or no special lubricants applied. If special lubricants of high stress ability, such as Never-Seez compound graphite and oil, molybdenum disulphite, colloidal copper or white lead are applied, multiply the torque values in the charts by the factor .90. The use of Loctite does not affect the torque values listed above.
- Torque values for socket-head capscrews are the same as for Grade 8 capscrews.
- Do not use these values if a different torque value or tightening procedure is given for a specific application. Torque values listed are for general use only. Check tightness of fasteners periodically.
- Sheer bolts are designed to fail under predetermined loads. Always replace shear bolts with identical grade.
- Fasteners should be replaced with the same or higher grade. If higher grade fasteners are used, these should only be tightened to the strength of the original.
- Tighten plastic insert or crimped steel-type lock nuts to approximately 110 percent of the dry torque values shown in the chart below, applied to the nut, not to the bolt head. Tighten toothed or serrated-type lock nuts to the full torque value. *Note: "Lubricated" means coated with a lubricant such as engine oil, or fasteners with phosphate and oil coatings. "Dry" means plain or zinc plated without lubrication. Tighten lubricated bolts to approximately 80% of dry bolts.*

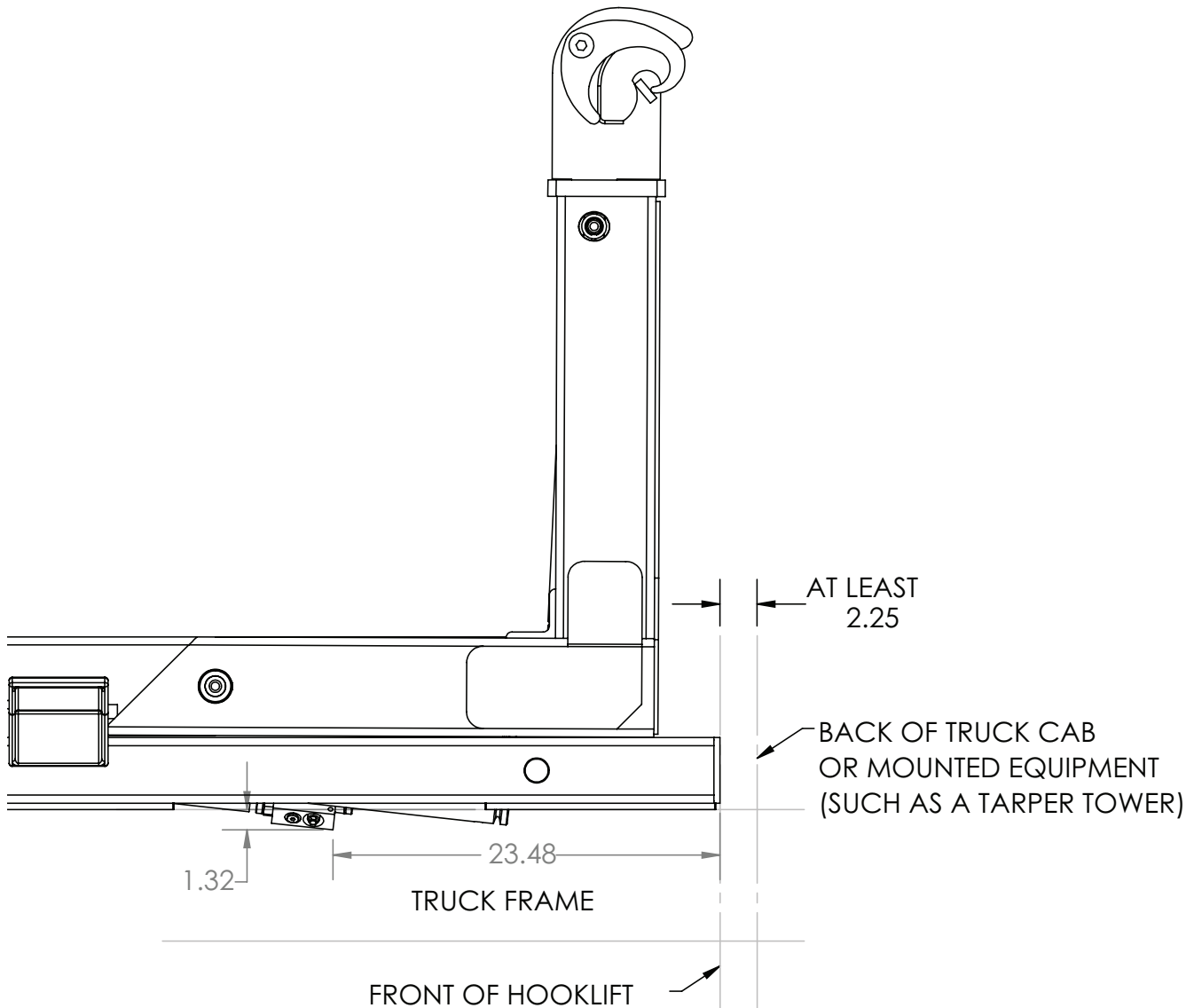
		GRADE 5		GRADE 8		GRADE 9
						
Size (DIA-TPI)	Bolt DIA (Inches)	Plain (Ft-Lb)	Plated (Ft-Lb)	Plain (Ft-Lb)	Plated (Ft-Lb)	Plated (Ft-Lb)
5/16-18	0.3125	17	13	25	18	22
3/8-16	0.3750	31	23	44	33	39
7/16-14	0.4375	49	37	70	52	63
1/2-13	0.5000	75	57	105	80	96
9/16-12	0.5625	110	82	155	115	139
5/8-11	0.6250	150	115	220	160	192
3/4-10	0.7500	265	200	375	280	340
7/8-9	0.8750	395	295	605	455	549
1-8	1.000	590	445	910	680	823
1 1/8-7	1.1250	795	595	1290	965	1167
1 1/4-7	1.2500	1120	840	1815	1360	1646
1 3/8-6	1.3750	1470	1100	2380	1780	2158
1 1/2-6	1.500	1950	1460	3160	2370	2865

## Installation Note

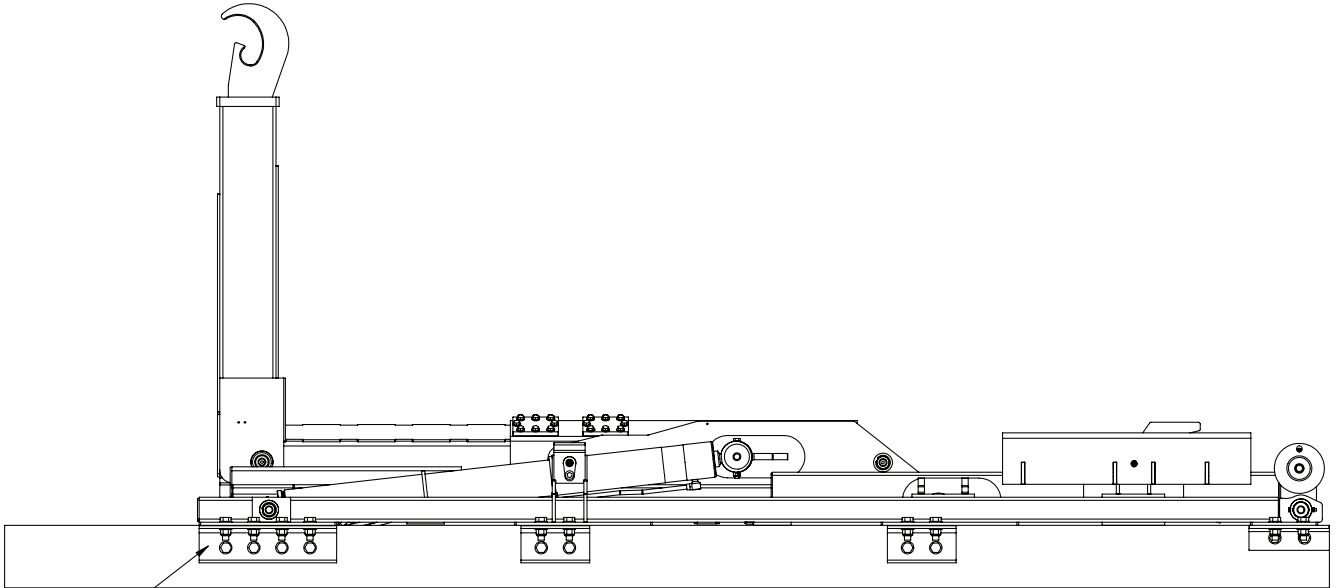
Every hooklift installation is unique. However, certain guidelines exist that apply to every model. Listed below is a general set of chronological steps that may be followed when installing a Stellar Hooklift. If any questions arise during the installation process, feel free to contact your local dealer or Stellar Customer Service at 800-321-3741.

### Step 1: Set the hooklift onto the truck frame.

- Visually inspect the truck and look for any potential issues. For example: Clearance problems, cross members extending too high, insufficient room in front of the hooklift for tarpers, exhaust manifolds, etc., or insufficient room in the rear to allow for bumper selection. *Note: Stellar Industries recommends allowing 12" behind the start of clear truck frame for installation of a tarping system.*
- Be sure to square the hooklift on the truck frame to allow for proper measurement. The front of the hooklift needs to be at least 2.50" behind the cab or any equipment mounted behind the cab.



## Step 2: Drill mounting holes.



NOTE: FOR THE FRONT MOUNT AT LEAST THREE BOLTS ARE REQUIRED TO ANGLE THE LOADER TO THE MOUNT AND TWO BOLTS TO MOUNT THE ANGLE TO THE TRUCK FRAME.

NOTE:

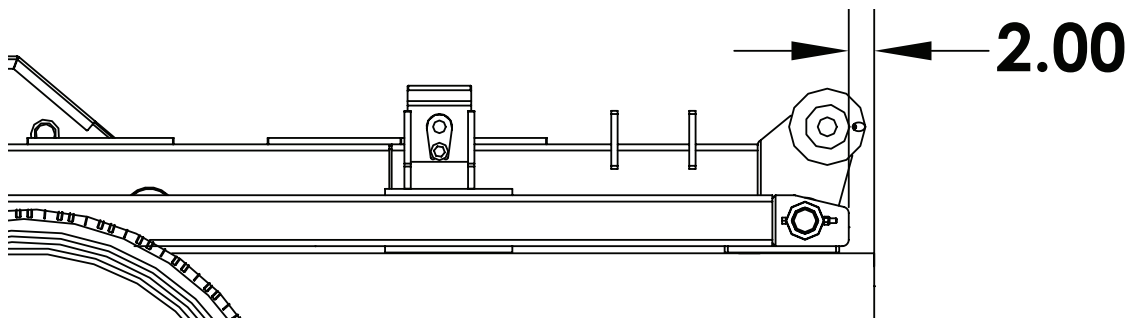
1. MULTIPLE HOLES ARE PREDRILLED ON THE BASE MOUNTING FLATS, ADDITIONAL HOLES MAY NOT BE ADDED.
2. ONLY THE FRONT ANGLE MOUNT REQUIRES 4 BOLTS TO INSTALL THE ANGLE MOUNT TO THE TRUCK FRAME AND 4 BOLTS TO INSTALL THE HOOK TO THE ANGLE MOUNT.
3. THE REAR 3 ANGLE MOUNTS REQUIRE 2 BOLTS EACH TO INSTALL THE ANGLE MOUNT TO THE TRUCK AND THE HOOKLIFT TO THE ANGLE MOUNT.

- When positioning mounts to frame, tie-down castings are bolted to the underside of each tie down plate located on the outside of the main rails of the base. The tie-down plate closest to the front of the base requires one mount on each side of the pin. This is the only time two tie down castings are required per a single tie-down plate. The tie-down plates are designed with multiple slots to offer more flexibility in mounting locations. Additional holes may not be added to the tie-down plates.

- Using the tie-down castings as a guide, drill 11/16" holes through the truck frame as shown.

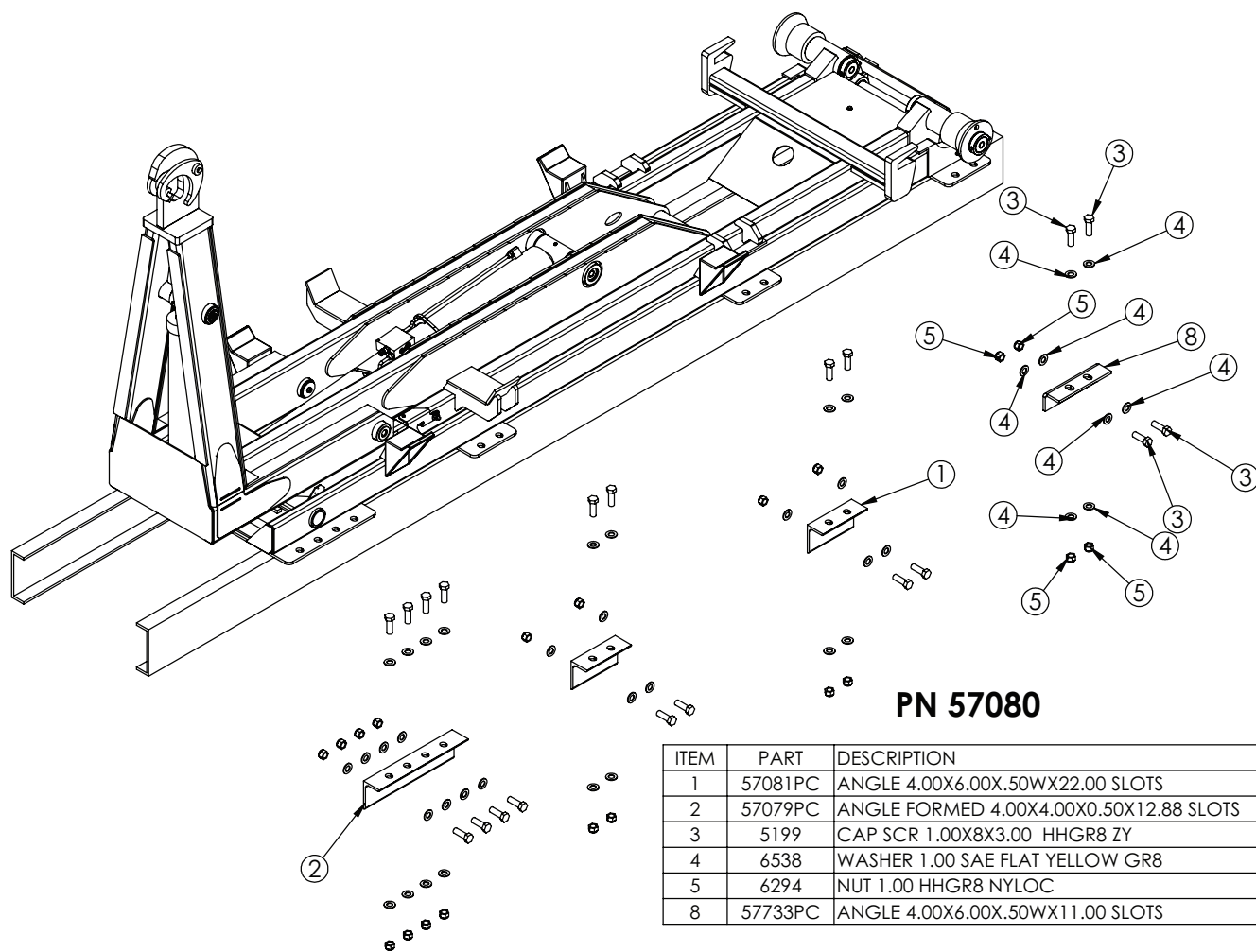
## Step 3: Install bumper.

- See NHTSA (National Highway Truck Safety Administration) Regulations for acceptable placement.
- Modify the truck frame as necessary so that it ends 2" from the rear of the hooklift.



## Step 4: Install tie-downs.

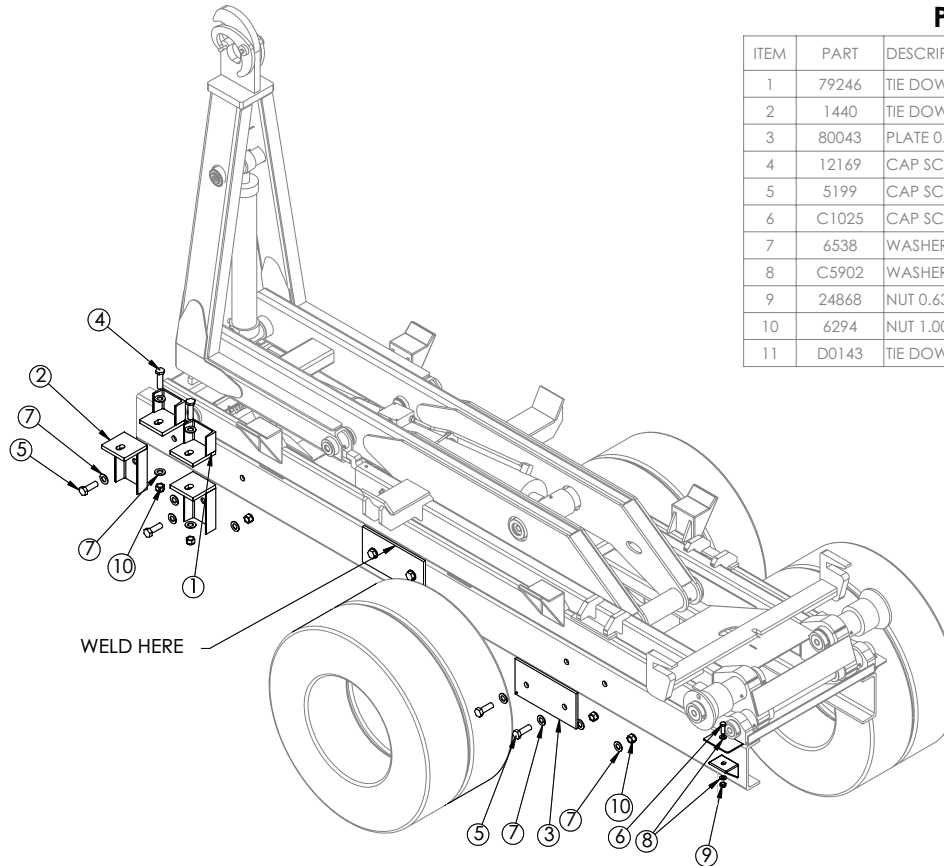
Note: See torque chart at beginning of chapter:



# Mounting Kit - PN 16898

## PN 16898

ITEM	PART	DESCRIPTION	QTY.
1	79246	TIE DOWN 40,000# PC BLACK	4
2	1440	TIE DOWN, 40000#	4
3	80043	PLATE 0.50X8.00X16.00 W/HOLE	4
4	12169	CAP SCR 1.00-8X3.50 HHGR8	4
5	5199	CAP SCR 1.00X8X3.00 HHGR8 ZY	12
6	C1025	CAP SCR 0.63-11X2.00 HHGR8 ZY	4
7	6538	WASHER 1.00 SAE FLAT YELLOW GR8	32
8	C5902	WASHER 0.63 SAE FLAT YELLOW GR8	8
9	24868	NUT 0.63-11 HHGR8 NYLOCK ZY	4
10	6294	NUT 1.00 HHGR8 NYLOC	16
11	D0143	TIE DOWN CHANNEL	2



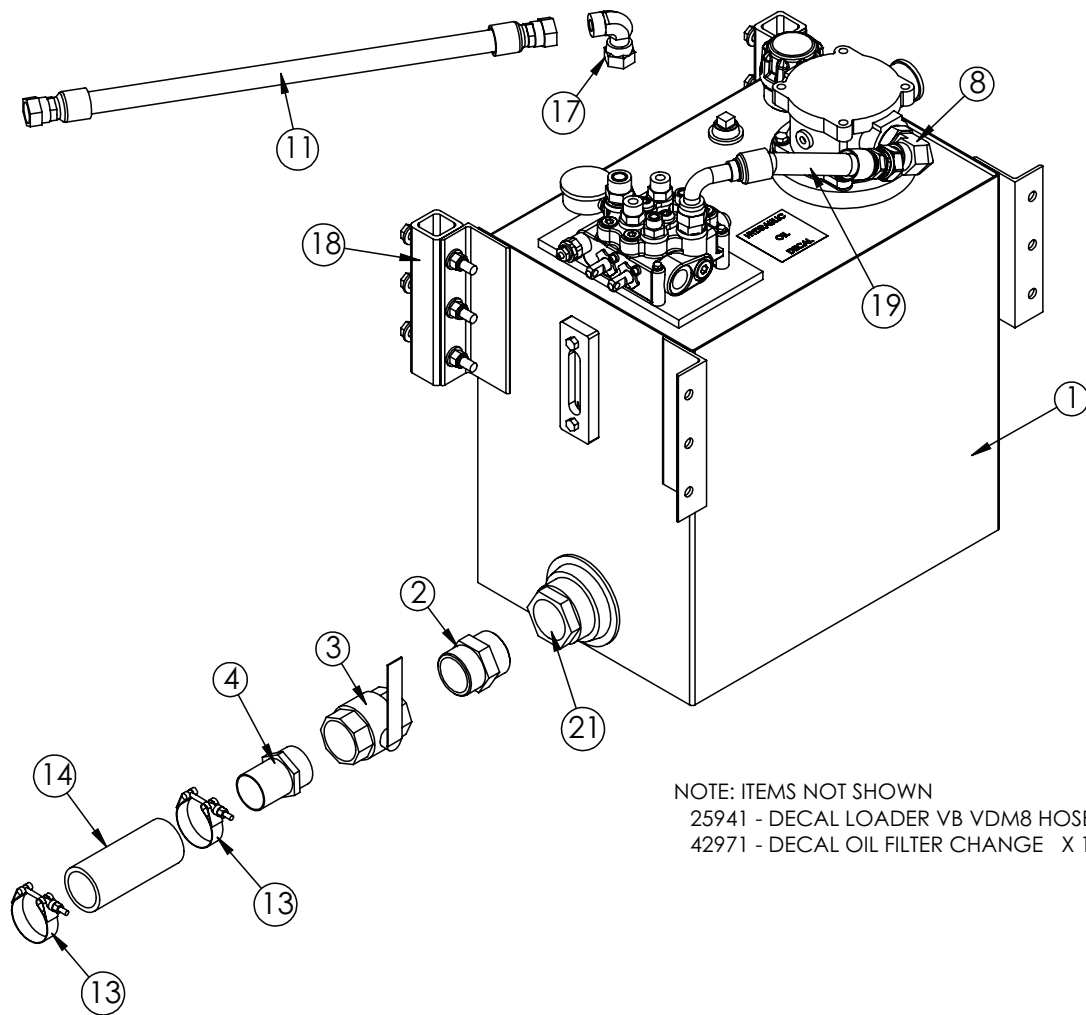
## Step 5: Install taper tower (If applicable).

See brand specific installation instructions.

## Step 6: Install hydraulic reservoir and valve bank.

- Before drilling and bolting to the frame, confirm adequate room for cable routing between in-cab controls and the valve bank. **Note: The top of the reservoir should not be above the truck frame. Refer to the Reservoir Assembly Drawings for details.**

## Reservoir Assembly with Cable Controls - PN 86463



NOTE: ITEMS NOT SHOWN

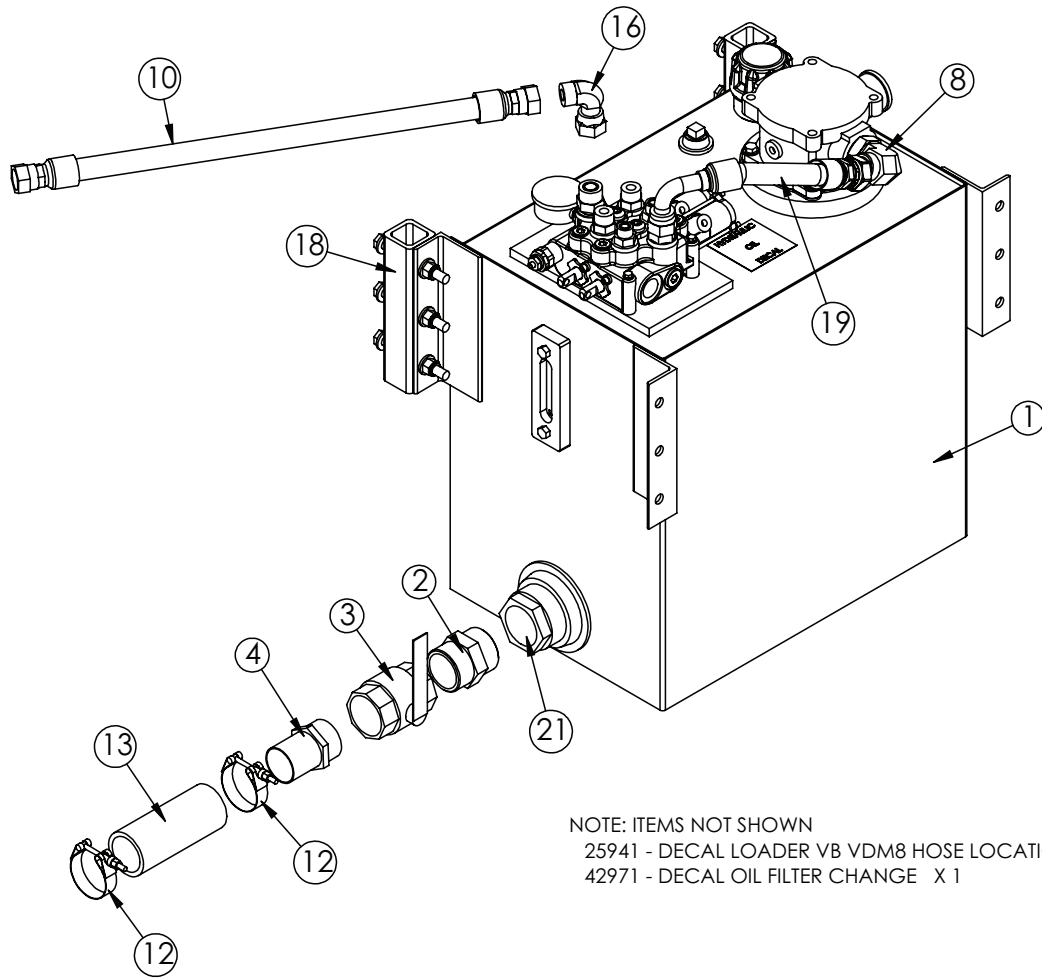
25941 - DECAL LOADER VB VDM8 HOSE LOCATION X 1

42971 - DECAL OIL FILTER CHANGE X 1

### PN 86463

ITEM	PART No.	DESCRIPTION	QTY.
01	86006	RSRVR ASM 25GAL K MODEL W/ TANK TOP FILTER	1
02	7353	FTG 32-32 MP-MP HEX NIPPLE STRAIGHT	1
03	C4750	VALVE BALL 2.00	1
04	C4730	FTG 32-32 MP-HB STRAIGHT	1
05	24611	VB 2-SECTION VDM8	1
06	0521	WASHER 0.25 LOCK	3
07	0339	CAP SCR 0.25-20X2.50 HHGR5	3
08	60395	FTG 16-20 MFS-MAORB 90	1
09	C2252	FTG 8-10 MFS-MORB STRAIGHT	2
10	16152	FTG 10-10 MFS-MORB STRAIGHT	2
11	27119	HOSE 0.75(78C-12-JC-JC-12-12-120)	1
12	10094	GAUGE OIL LF 2.5" 0-5000 BM	1
13	C4819	HOSE CLAMP 2.00	2
14	17766	HOSE SUCT 2.00 10FT	1
15	25630	FTG 10-4 MORB-FP STRAIGHT	1
16	D1435	FTG 12-10 MFS-MORB STRAIGHT	1
17	C4903	FTG 12-12 MFS-FFSS 90	1
18	83959	MNT KIT RSRVR 25G	1
19	86168	HOSE 0.75(300PSI)-16FFSS SHORT-12FFSS 90 SHORT-7.75CL	1
20	C2142	FTG 12-12 MFS-MORB STRAIGHT	1
21	C6327	FILTER STRAINER 35GAL TF-2030	1

## Reservoir Assembly with Air Controls - PN 86467



NOTE: ITEMS NOT SHOWN  
 25941 - DECAL LOADER VB VDM8 HOSE LOCATION X 1  
 42971 - DECAL OIL FILTER CHANGE X 1

### PN 86467

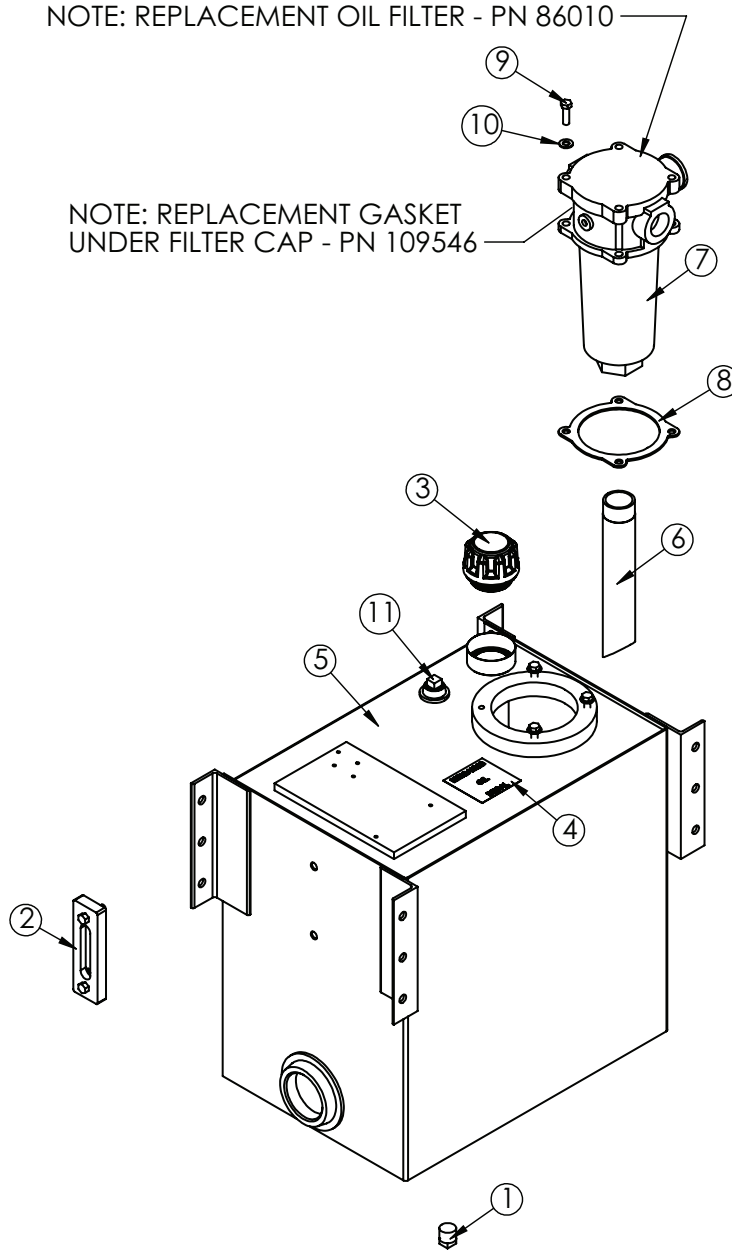
ITEM	PART No.	DESCRIPTION	QTY.
01	86006	RSRVR ASM 25GAL K MODEL W/ TANK TOP FILTER	1
02	7353	FTG 32-32 MP-MP HEX NIPPLE STRAIGHT	1
03	C4750	VALVE BALL 2.00	1
04	C4730	FTG 32-32 MP-HB STRAIGHT	1
05	25940	VB 2-SECTION VDM8 W/AIR ACTUATORS	1
06	0521	WASHER 0.25 LOCK	3
07	0339	CAP SCR 0.25-20X2.50 HHGR5	3
08	60395	FTG 16-20 MFS-MAORB 90	1
09	C2252	FTG 8-10 MFS-MORB STRAIGHT	2
10	27119	HOSE 0.75(78C-12-JC-JC-12-12-12-120)	1
11	10094	GAUGE OIL LF 2.5" 0-5000 BM	1
12	C4819	HOSE CLAMP 2.00	2
13	17766	HOSE SUCT 2.00 10FT	1
14	25630	FTG 10-4 MORB-FP STRAIGHT	1
15	d1435	FTG 12-10 MFS-MORB STRAIGHT	1
16	C4903	FTG 12-12 MFS-FFSS 90	1
17	16152	FTG 10-10 MFS-MORB STRAIGHT	2
18	83959	MNT KIT RSRVR 25G	1
19	86168	HOSE 0.75(300PSI)-16FFSS SHORT-12FFSS 90 SHORT-7.75CL	1
20	C2142	FTG 12-12 MFS-MORB STRAIGHT	1
21	C6327	FILTER STRAINER 35GAL TF-2030	1



# Reservoir Subassembly - PN 86006

NOTE: REPLACEMENT OIL FILTER - PN 86010

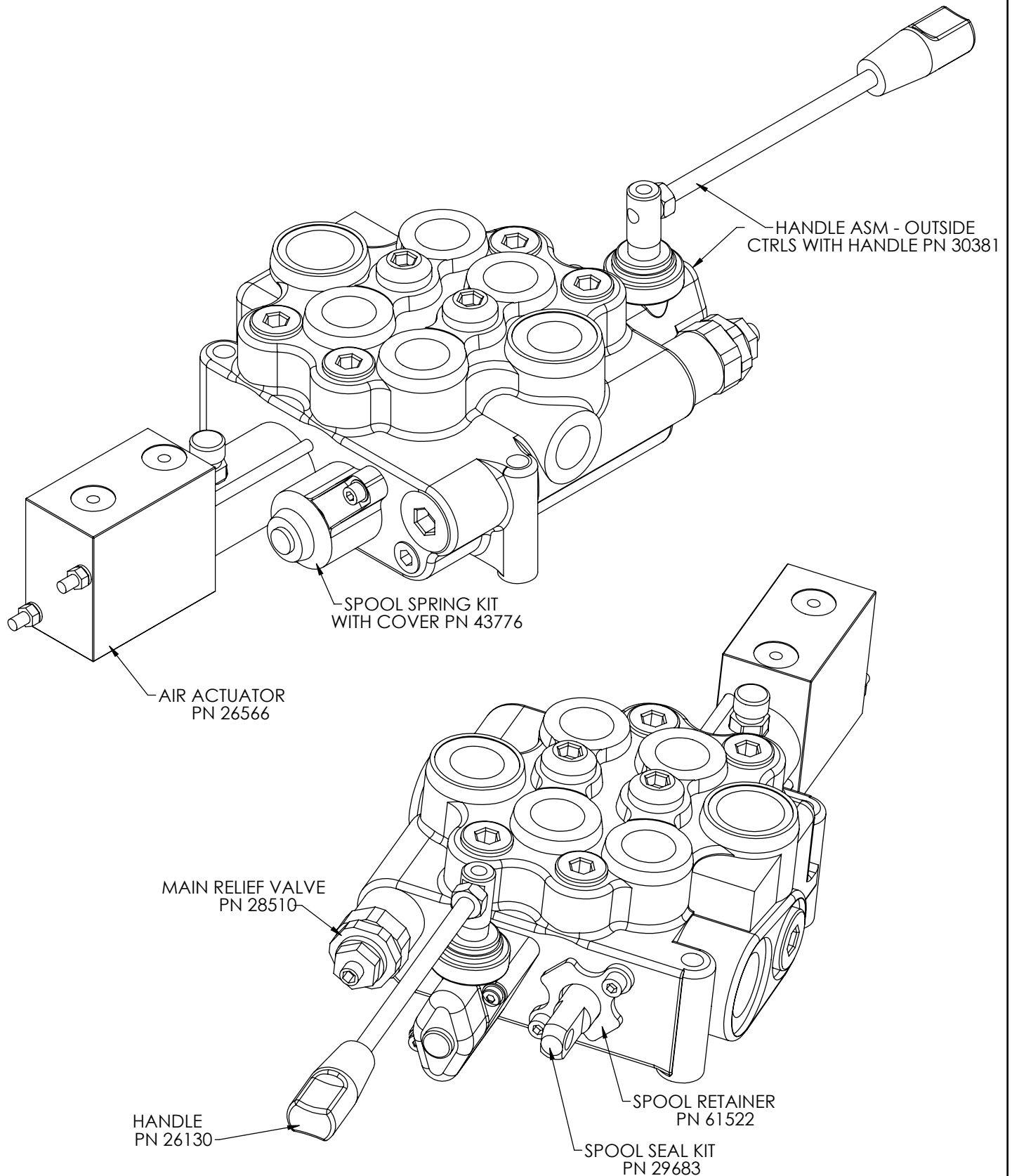
NOTE: REPLACEMENT GASKET UNDER FILTER CAP - PN 109546



## PN 86006

ITEM	PART	DESCRIPTION	QTY
1	C2126	MAGNETIC PLUG DRAIN 3/4"	1
2	15463	THERMO SIGHT GAUGE ZINGA SG-O5-A-T-N	1
3	73278	CAP FILL 1PSI ZINGA THREADED	1
4	13002	DECAL HYD OIL SPECIFICATION MOBIL	1
5	86007	RSRVR 25GAL K MODEL W/ TANK TOP FILTER	1
6	66656	FILTER PIPE TANK TOP	1
7	85928	FILTER TANK TOP 20 FORB	1
8	58396	GASKET RG-11 TANK TOP FILTER	1
9	0335	CAP SCR 0.38-16X1.25 HHGR5	4
10	C6353	WASHER 0.38 SAE FLAT YELLOW GR8	4
11	C4845	PLUG 0.75 NPT SQ HD BLK	1

# Valve Bank Parts Drawing



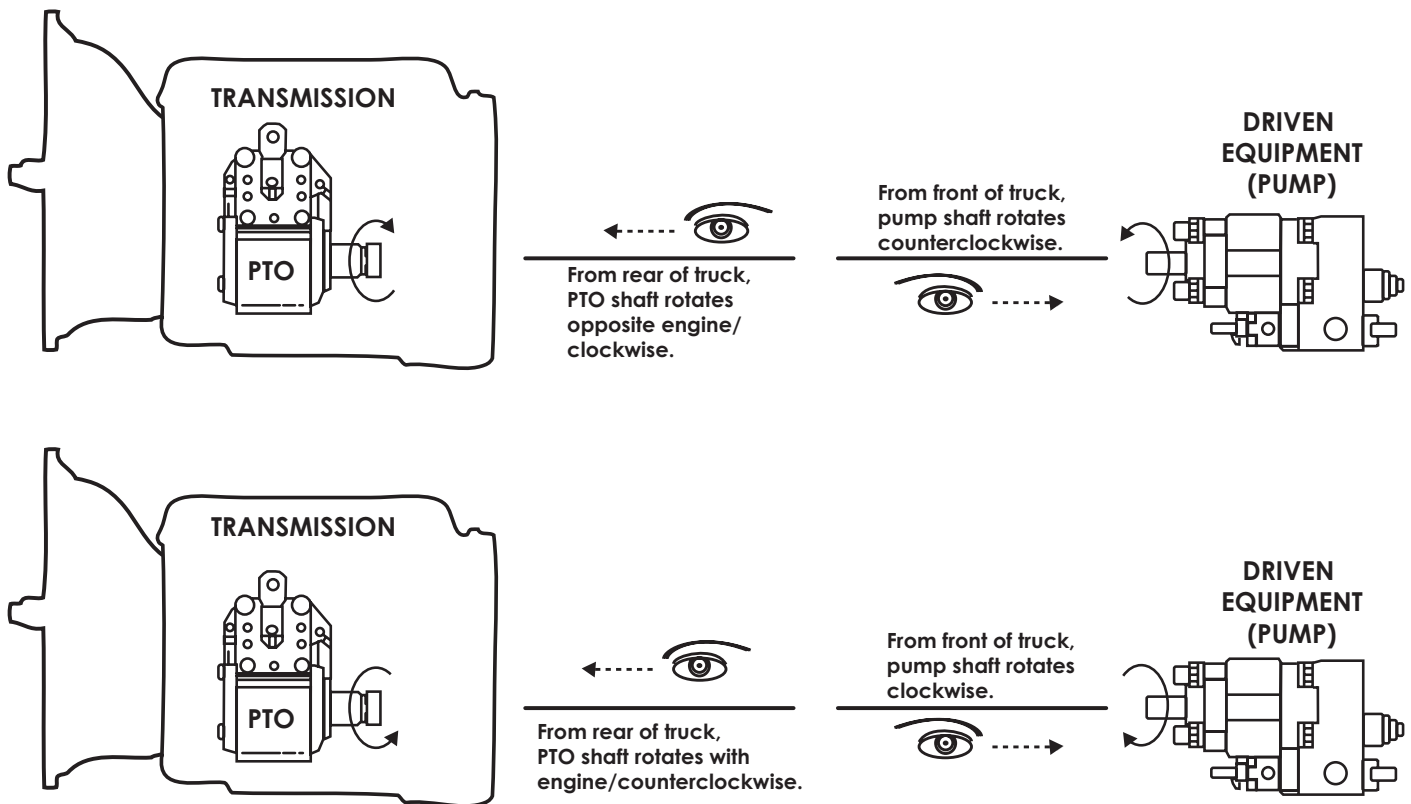
## Step 7: Install PTO and pump.

- Before installing the pump to the PTO, always check the direction of the PTO output shaft to determine which direction the hydraulic pump needs to rotate to operate the equipment. If this is not determined prior to installing the hydraulic pump, the hydraulic pump may rotate in the incorrect direction and damage the front shaft seal.

### PTO Direction of Rotation Tip:

Viewed by standing at the rear of the vehicle, looking forward at the PTO shaft, with the PTO shaft pointing toward the rear of the vehicle:

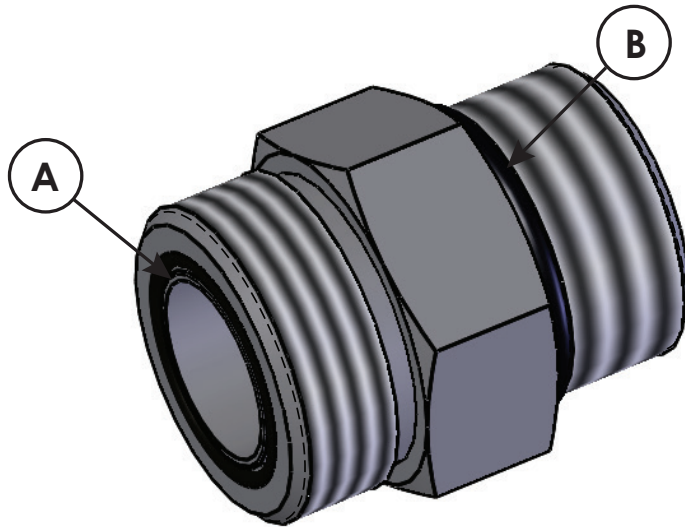
P.T.O.	Driven Equipment
Rotates Opposite Engine (looks "clockwise")	Driven equipment must rotate counterclockwise (also called left-hand rotation, "A" for anti-clockwise or C.C.W. for counter clockwise).
Rotates With Engine (looks "counterclockwise")	Driven equipment must rotate clockwise (also called right-hand rotation or "C" for clockwise).



*Remember that the PTO is specified by looking from the rear of the truck to the front of the truck. The driven equipment (pump) is specified by looking from the front of the truck to the rear of the truck.*

- Use the brand specific PTO/Pump installation instructions. If the directions are not quite clear, contact Stellar® Customer Service or consult with a hydraulic specialty house or company prior to installation.

## Face Seal/O-Ring Size Chart



Hose Size	Fitting Size	Face Seal (A) Stellar® PN	O-ring Boss (B) Stellar® PN
1/4"	#4	C2027	D1245
3/8"	#6	C2028	D1246
1/2"	#8	C2029	D1247
5/8"	#10	32223	D1248
3/4"	#12	D1244	D1249
1"	#16		D1250

### Step 8: Route hydraulic hoses.

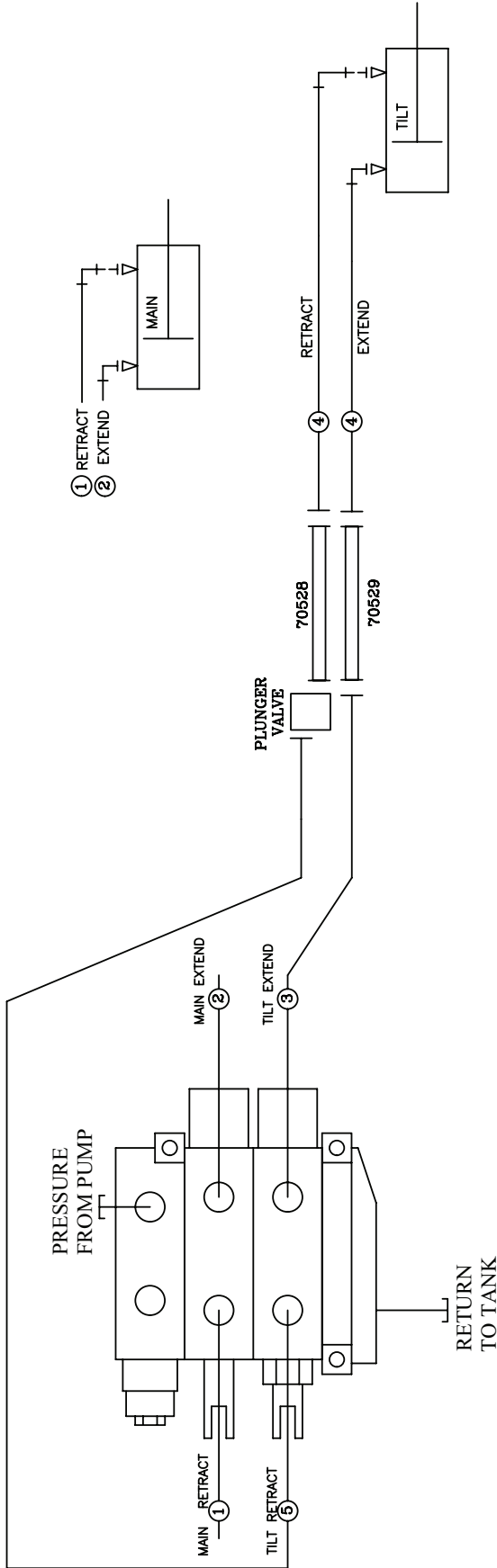
1. Route hose line from the reservoir to the pump (See hose kit drawing for details).
2. Route hose line from the pump to the valve bank (See hose kit drawing for details).
3. Route hose line from the valve bank to the reservoir (See hose kit drawing for details).
4. Route hose line from the valve bank and the hooklift (See hose kit drawing for details).

*Note: If using the Power Beyond feature for additional function, see "Power Beyond VDM8 Valve" later in this chapter for further details.*

#### Notes on hose line routing:

- Protect these lines with hose wrap when necessary.
- Keep these lines away from sharp edges.
- Keep these lines away from the exhaust or other temperature extreme items.
- Keep these lines away from the driveshaft or other moving items.

# Hose Kit - PN 98020



NOTE: SYSTEM PRESSURE IS 4500 P.S.I.

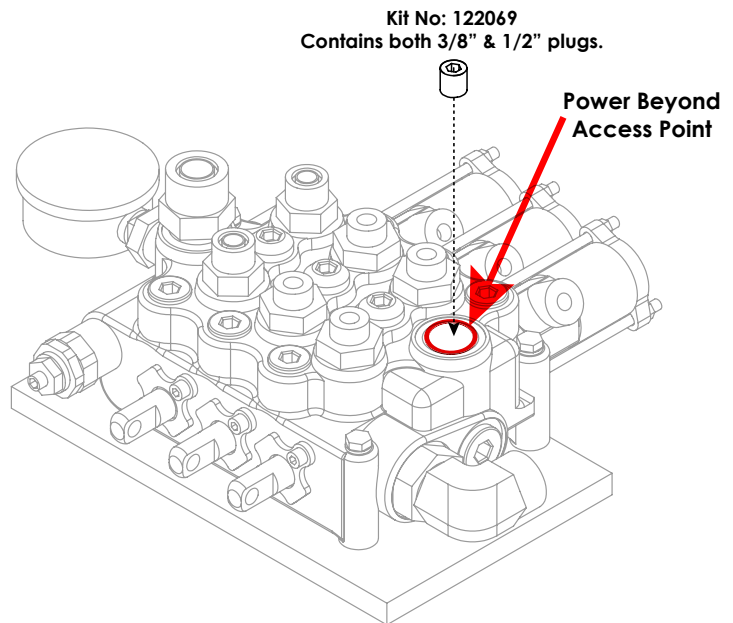
ITEM	PART No.	DESCRIPTION	QTY
05	95600	HOSE 0.50(4500PSI)-8FFSS-8FFSS 90 LONG-90CL	1
04	98024	HOSE 0.50(4500PSI)-8MFS-8MBX90-238CL	2
03	95458	HOSE 0.50(4500PSI)-8MFS-8FFSS 90 SHORT-90CL	1
02	41125	HOSE 0.63(4500PSI)-10FFSS-10FFSS 90 SHORT-96CL	1
01	41124	HOSE 0.63(4500PSI)-10FFSS-10FFSS 90 LONG-96CL	1

<p>STELLAR #41124- 0.63(4500PSI)-10FFSS-10FFSS 90 LONG-96CL QTY - 1</p> <p>FUNCTION: MAIN CYLINDER TO VB (MAIN RETRACT) ①</p>	<p>STELLAR #95458- 0.50(4500PSI)-8MFS-8FFSS 90 SHORT-90CL QTY - 1</p> <p>FUNCTION: PORT TUBE TO VB (TILT EXTEND) ③</p>
<p>STELLAR #41125- 0.63(4500PSI)-10FFSS-10FFSS 90 SHORT-96CL QTY - 1</p> <p>FUNCTION: MAIN CYLINDER TO VB (MAIN EXTEND) ②</p>	<p>STELLAR #95600- 0.50(4500PSI)-8FFSS SHORT-8FFSS 90 LONG-90CL QTY - 1</p> <p>FUNCTION: PLUNGER VALVE TO VB (TILT RETRACT) ⑤</p>
<p>STELLAR #98024- 0.50(4500PSI)-8MFS-8MBX90-238CL QTY - 2</p> <p>FUNCTION: PORT TUBES TO TILT CYLINDER ④</p>	

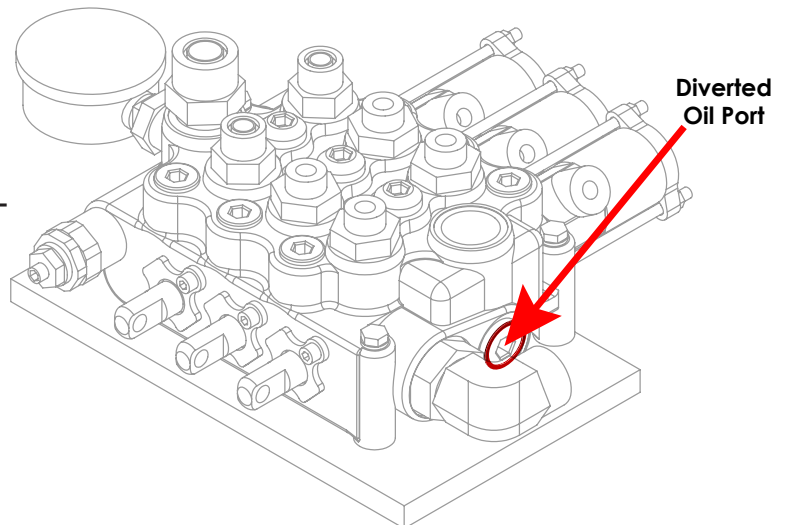
## Power Beyond VDM8 Valve

These instructions are intended for correct installation of power beyond on a Salami VDM8 valve bank. If any hydraulic component is integrated after this valve the power beyond must be installed correctly, or serious damage may incur to the hydraulic system.

1. Remove cover / access plug to reveal the power beyond access point. Can also be used as the Return / Tank port.
2. Install one (either 1/2" or 3/8") plug from kit number:122069 into lower portion of cavity to activate the power beyond feature. Use thread sealer. (Tape sealers not recommended.)



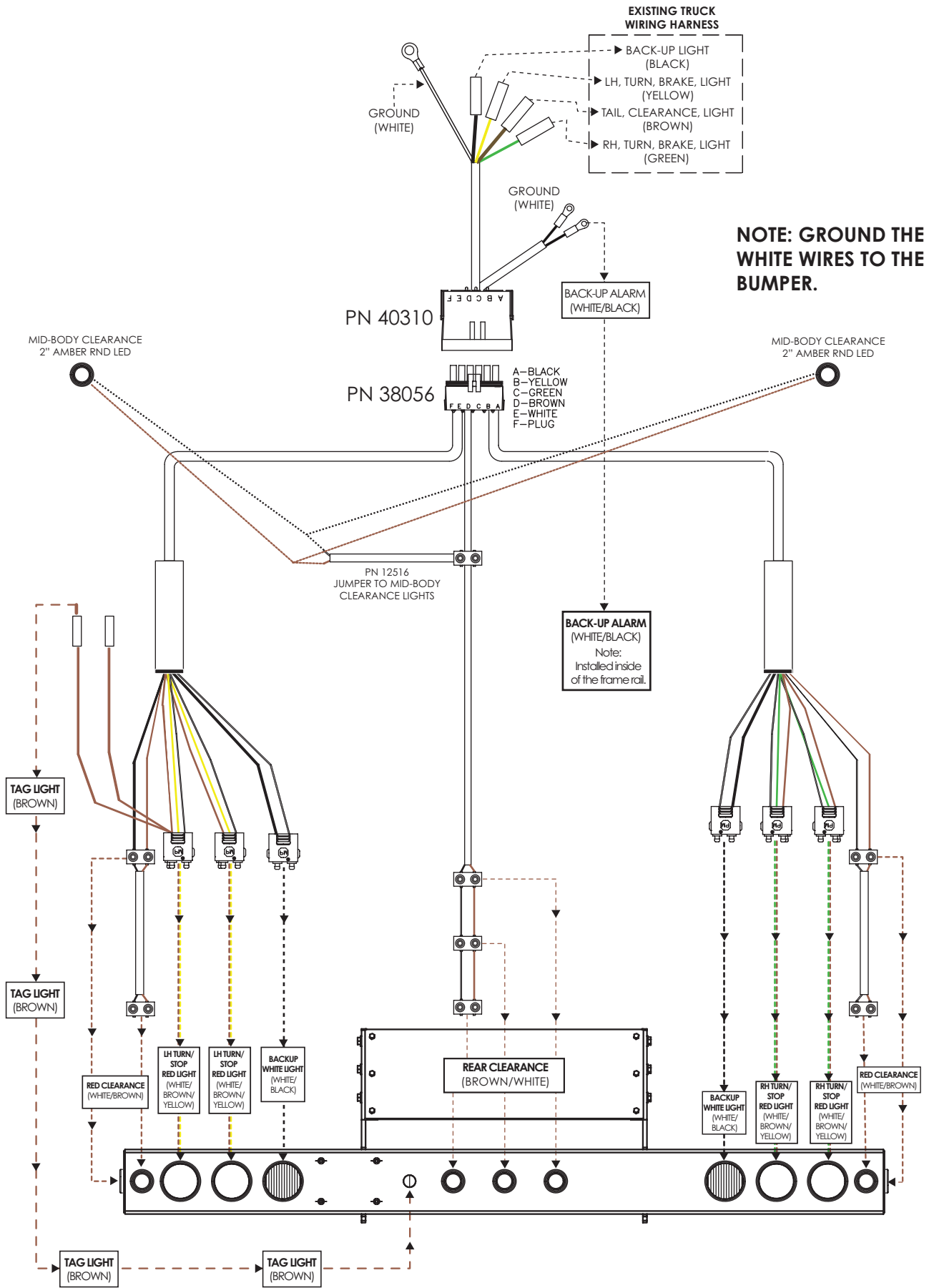
3. The Power Beyond feature is now activated and will divert oil to alternate system via the port shown.



### NOTES:

- THE RETURN / TANK LINE MUST BE CONNECTED TO THE TOP OR THE SIDE PORT, LABELED "T".
- USING THE RETURN LINE TO RUN AUXILIARY EQUIPMENT WILL DIRECTLY RESULT IN A FAILURE, AND WILL NOT IN ANY CIRCUMSTANCE, BE COVERED UNDER WARRANTY.
- A STANDARD STELLAR® HOOKLIFT WILL HAVE 6 HYDRAULIC LINES ATTACHED TO THE VALVE. WITH POWER BEYOND ACTIVATED, THEY WILL HAVE 7 HYDRAULIC LINES ATTACHED TO THE VALVE.

# Step 9: Route Electrical Components



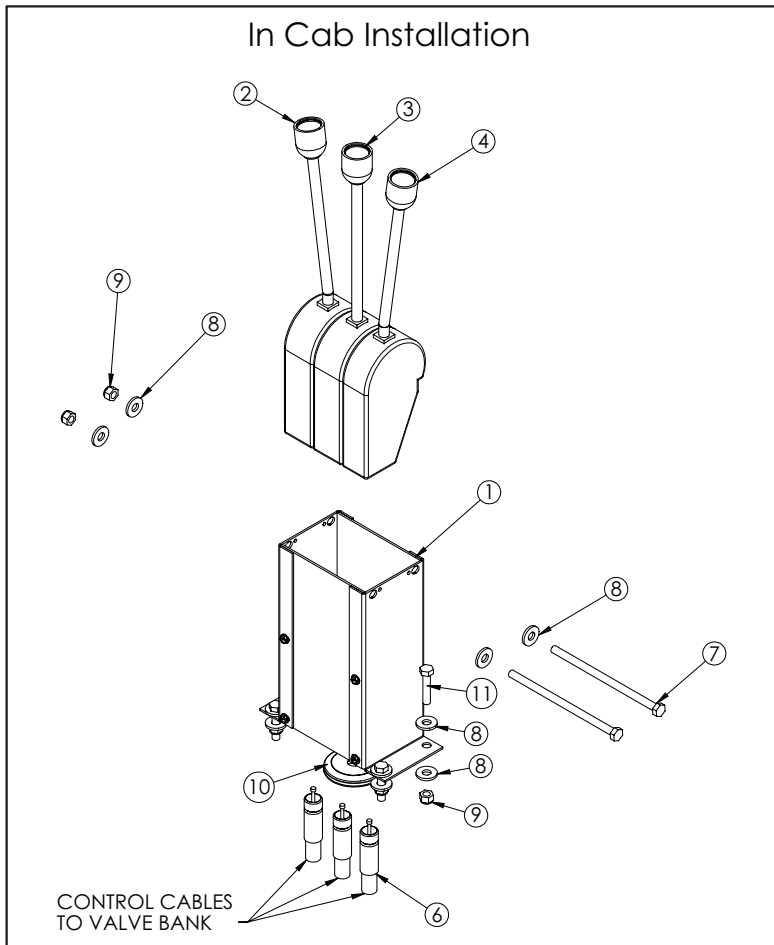
# Step 10: Install cab and PTO controls.

- Use PTO brand specific installation instructions.
- For cab controls, see controller assembly drawing for details:

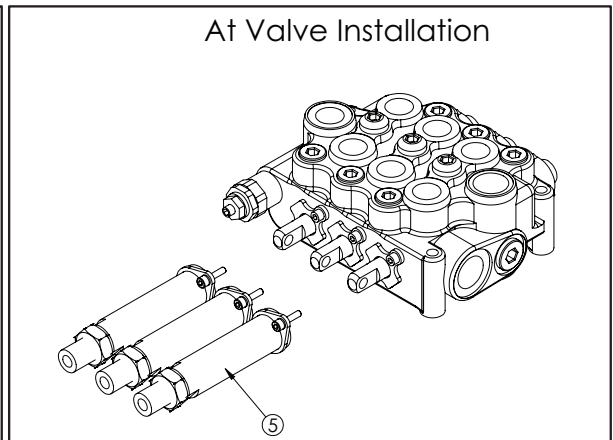
## Cable Controls

	2 SECTION	3 SECTION
<b>96 INCH</b>	PN 50835	PN 50836
<b>144 INCH</b>	PN 53444	PN 53445
<b>192 INCH</b>	PN 50837	PN 50838

In Cab Installation



At Valve Installation

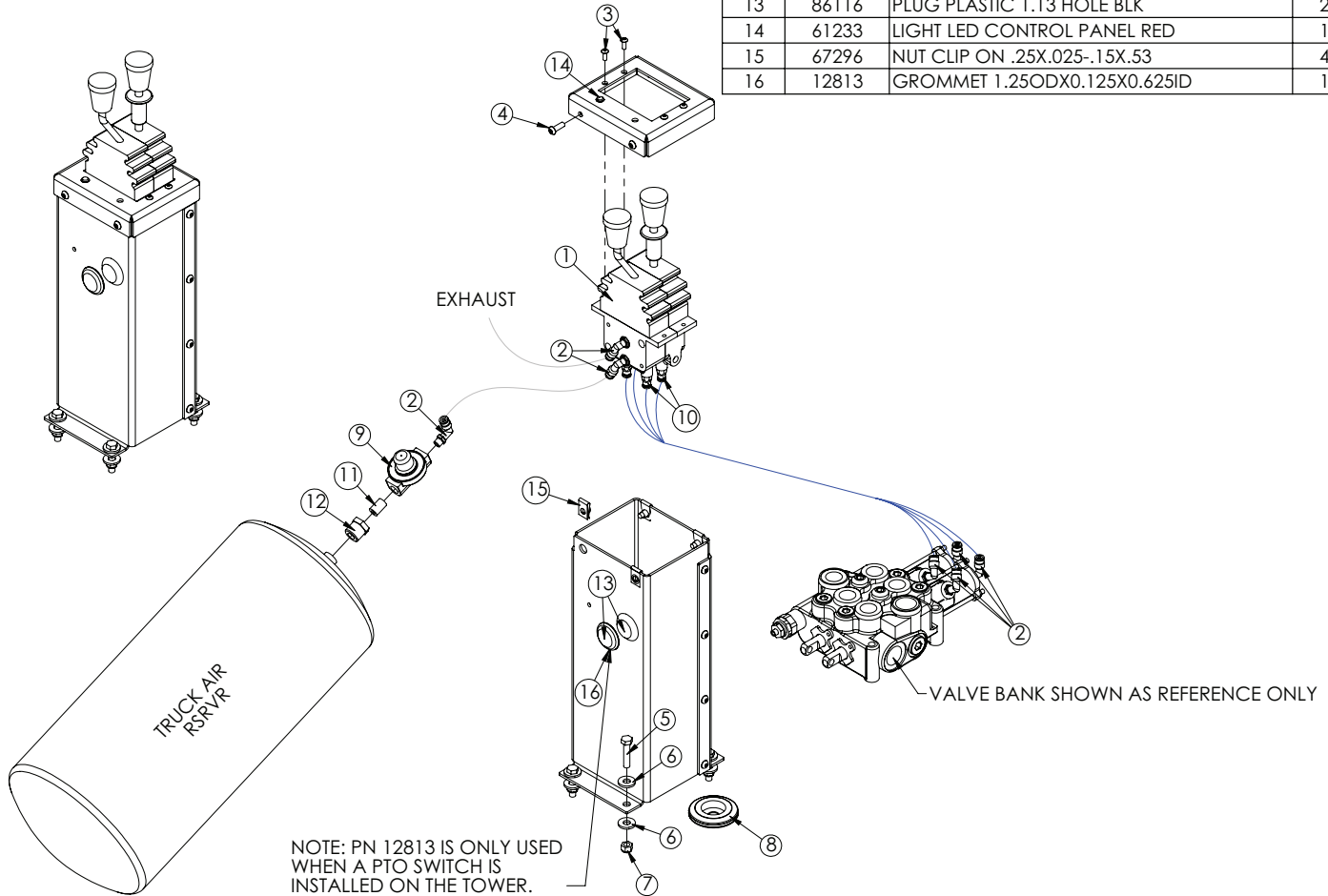


ITEM	PART	DESCRIPTION	QTY.
1	38351	VALVE CTRL CONSOLE 3LEVER RVC	1
2	37475	CTRL CNTR LOCK LEFT BEND	1
3	37476	CTRL CNTR LOCK NO BEND	1
4	37474	CTRL CNTR LOCK RIGHT BEND	1
5	37469	CABLE CONN. KIT FOR VD8A/VDM8	3
6	37471	CONTROL CABLE 96 IN WESCON	3
7	20057	CAP SCR 0.31-18X6.50 HHGR5	2
8	0343	WASHER 0.31 USS FLAT	12
9	0342	NUT 0.31-18 HHGR5 NYLOC	6
10	16948	GROMMET 2.50ODX0.125X0.25ID	1
11	0486	CAP SCR 0.31-18X1.50 HHGR5	4



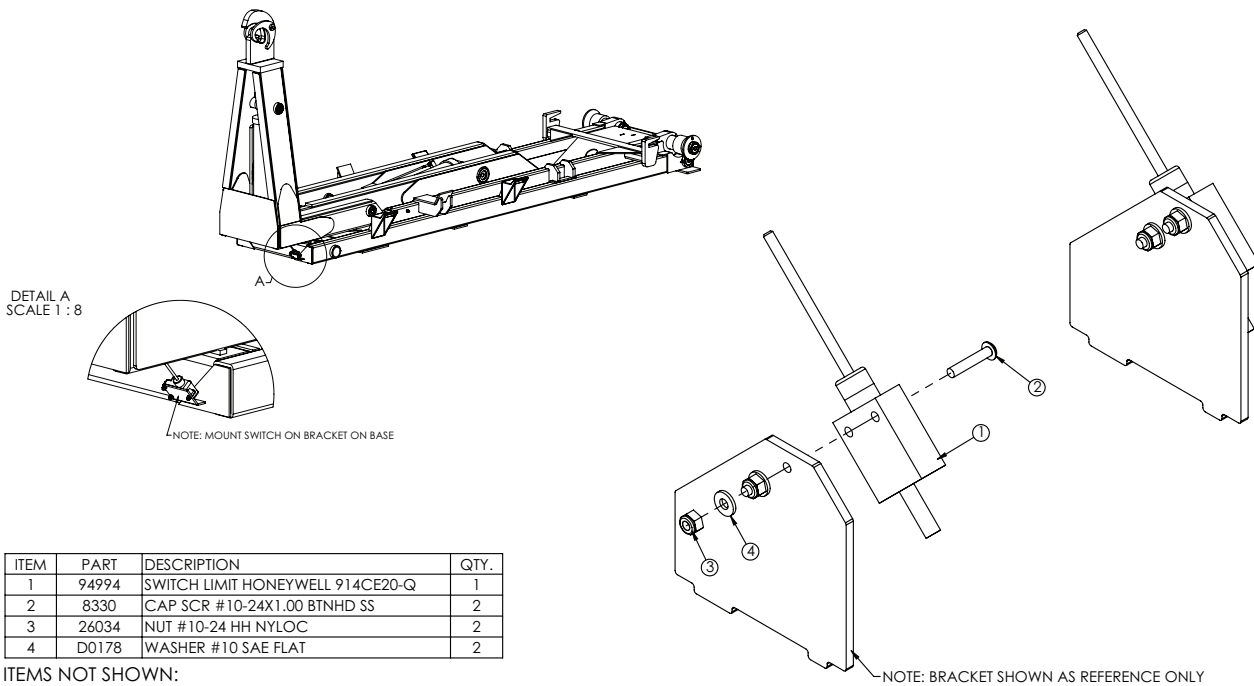
# Air Controls

ITEM	PART	DESCRIPTION	QTY.
1	41988	CTRL 2 BANK 4WAY AIR CNTR LOCK	1
2	45687	FTG 4-2 MP-PTC 90 BRASS 1169X4S	7
3	D1711	CAP SCR #10-24X0.50 BTNHD SS	4
4	C6021	CAP SCR 0.25-20X0.75 BTNHD SS	4
5	0486	CAP SCR 0.31-18X1.50 HHGR5	4
6	0343	WASHER 0.31 USS FLAT	8
7	0342	NUT 0.31-18 HHGR5 NYLOC	4
8	16948	GROMMET 2.50ODX0.125X0.25ID	1
9	35211	PTO AIR REGULATOR 378414	1
10	45333	FTG 4-2 PC DOT-MP STRAIGHT	4
11	C5934	FTG 4-4XCLOSE MP-MP NIPPLE STRAIGHT BLK	1
12	C1065	BUSHING 0.50X0.25 BLK	1
13	86116	PLUG PLASTIC 1.13 HOLE BLK	2
14	61233	LIGHT LED CONTROL PANEL RED	1
15	67296	NUT CLIP ON .25X.025-.15X.53	4
16	12813	GROMMET 1.25ODX0.125X0.625ID	1



# Step 11: Install Hoist Up Alarm - PN 83115

Install the hoist up alarm onto the base of the hooklift as shown:

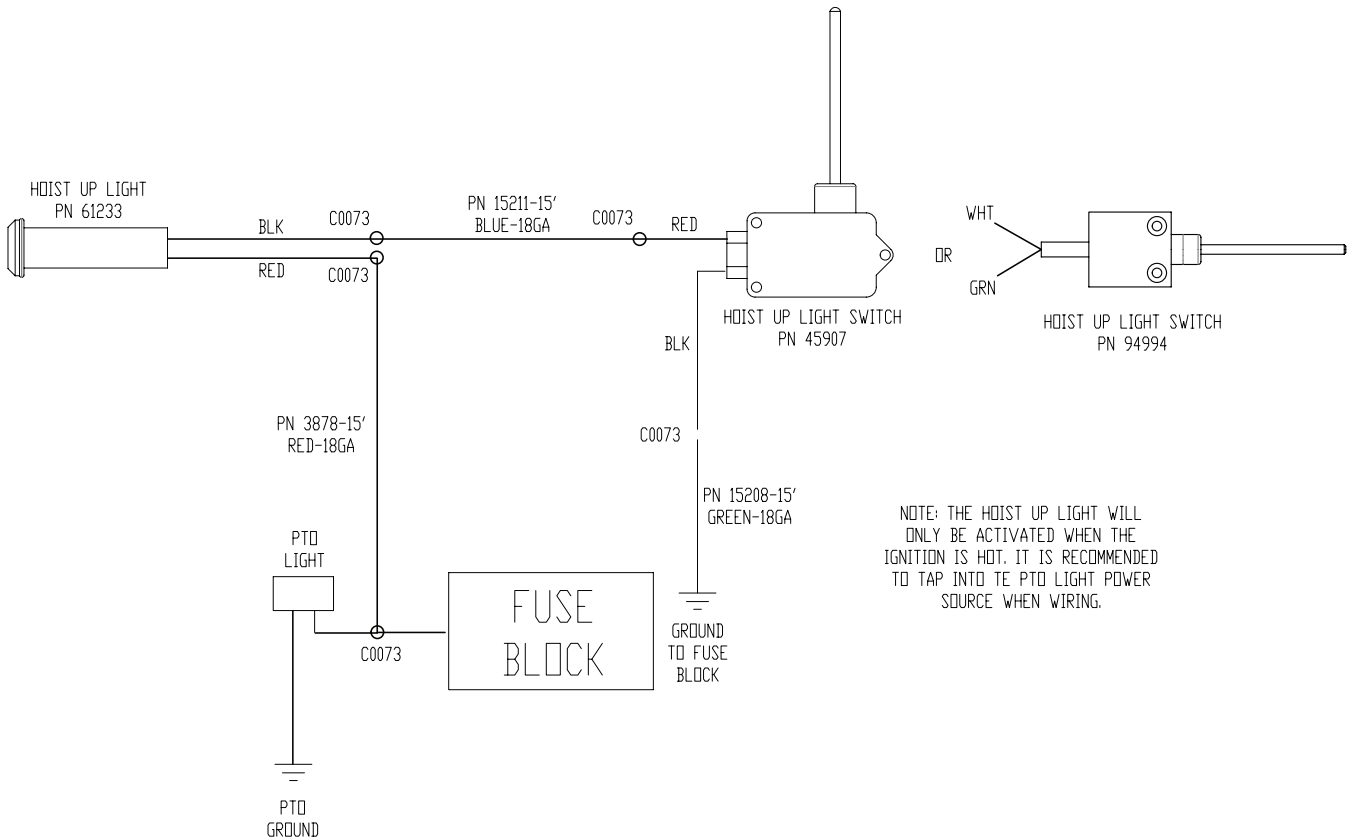


ITEM	PART	DESCRIPTION	QTY.
1	94994	SWITCH LIMIT HONEYWELL 914CE20-Q	1
2	8330	CAP SCR #10-24X1.00 BTNHD SS	2
3	26034	NUT #10-24 HH NYLOC	2
4	D0178	WASHER #10 SAE FLAT	2

**ITEMS NOT SHOWN:**

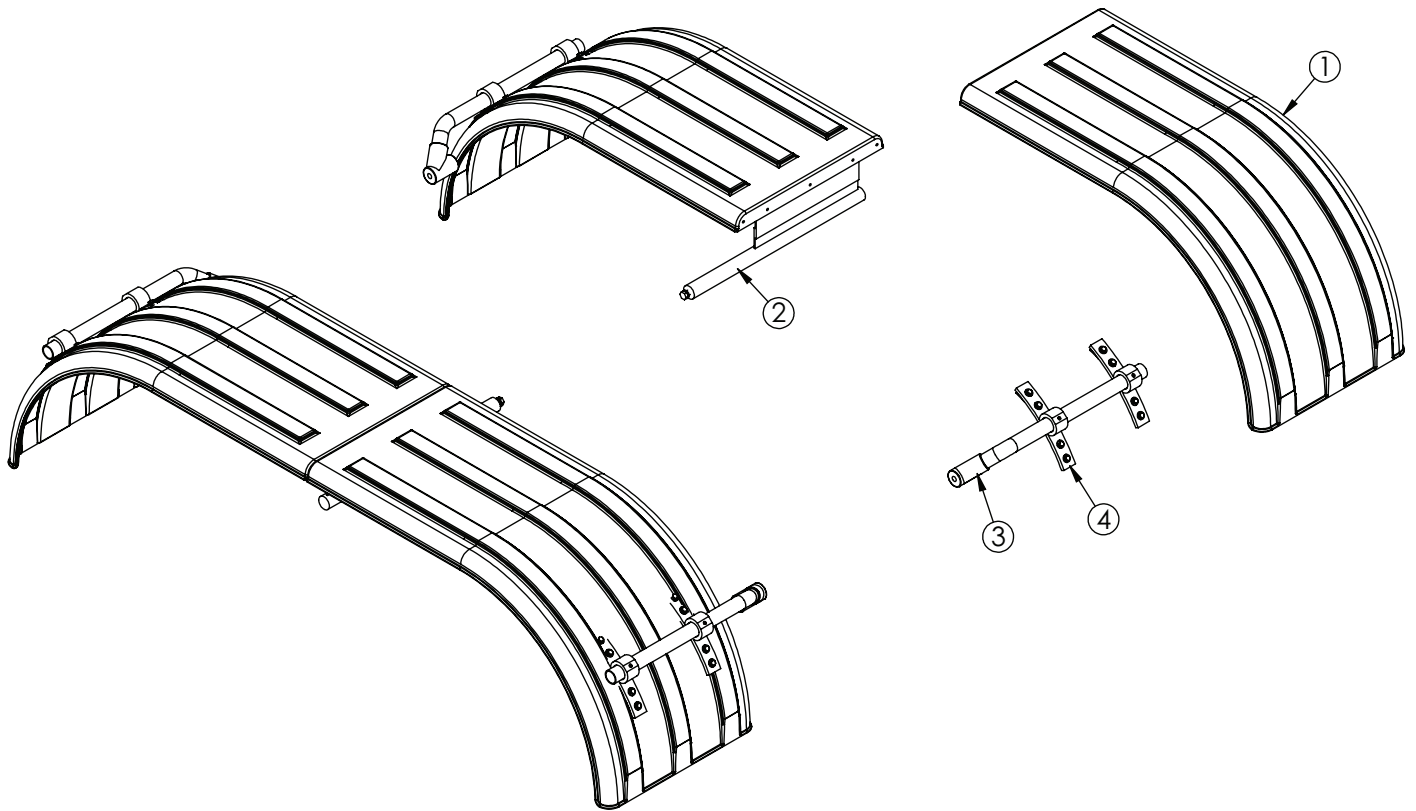
- C0073 - TERML 16-14 BUTT WATER TIGHT X 5
- 3878 - WIRE 18GA (RM) RED (PRIMARY) SAE J-1128 X 15FT
- 15211 - WIRE 18GA (RM) BLUE SAE J-1128 X 15FT
- 15208 - WIRE 18GA (RM) GREEN SAE J-1128 X 15FT
- 61233 - LIGHT LED CONTROL PANEL RED X 1
- 88324 - ELEC SCHEM CONTROL TOWER X 1

NOTE:  
INSTALL DUMP UP LIGHT (PN 61233) IN CONTROL TOWER IF AIR CONTROLS AND IN DASH ON STREET SIDE OF STEERING WHEEL IF CABLE OR ELECTRIC CONTROLS.



# Step 12: Install mud flaps and fenders.

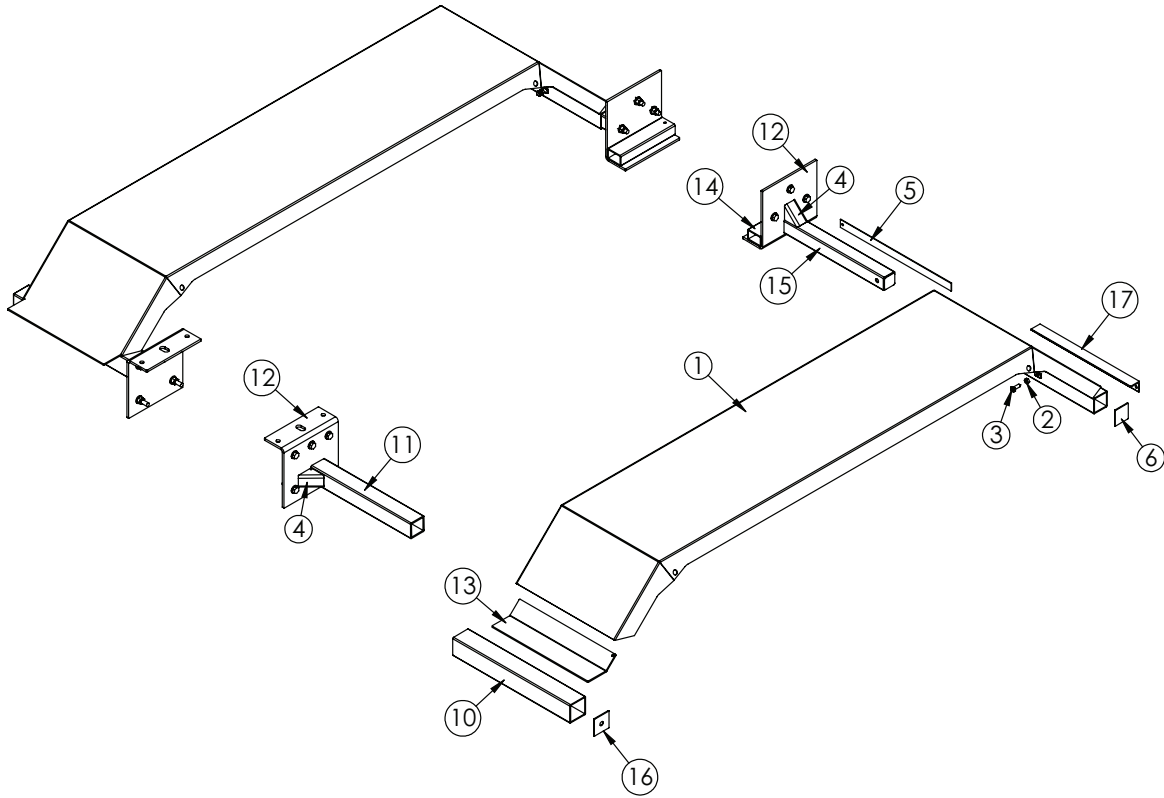
## Poly Tandem Fender Assembly - PN 58217



### PN 58217

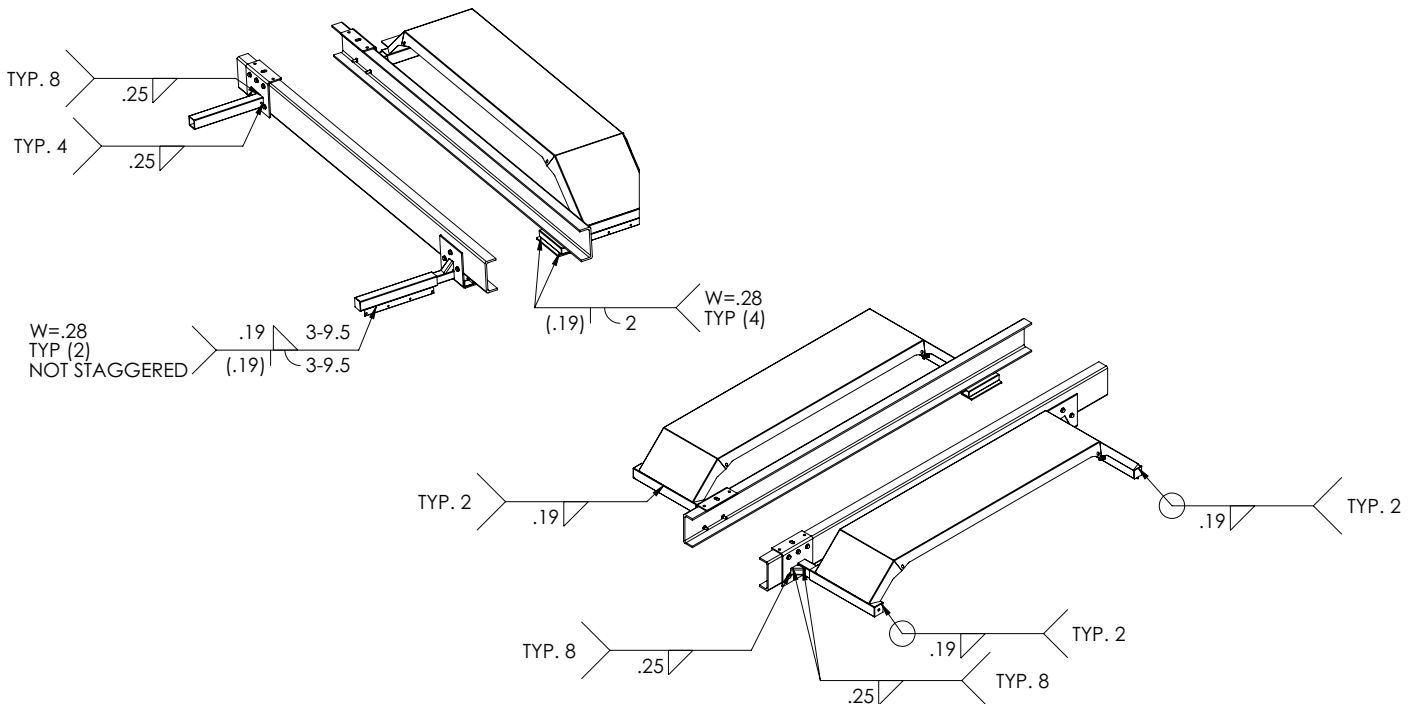
ITEM	PART No.	DESCRIPTION	QTY.
1	64060	FENDER POLY MIN 900 FRONT/REAR	4
2	102205	MNT KIT FENDER MID SUPPORT TANDEM POLY	1
3	5733	MTG KIT OFFSET POLY FENDER (FLEET)	2
4	7633	FENDER MOUNT ASM KIT	2

# Steel Tandem Fender Assembly - PN 100617

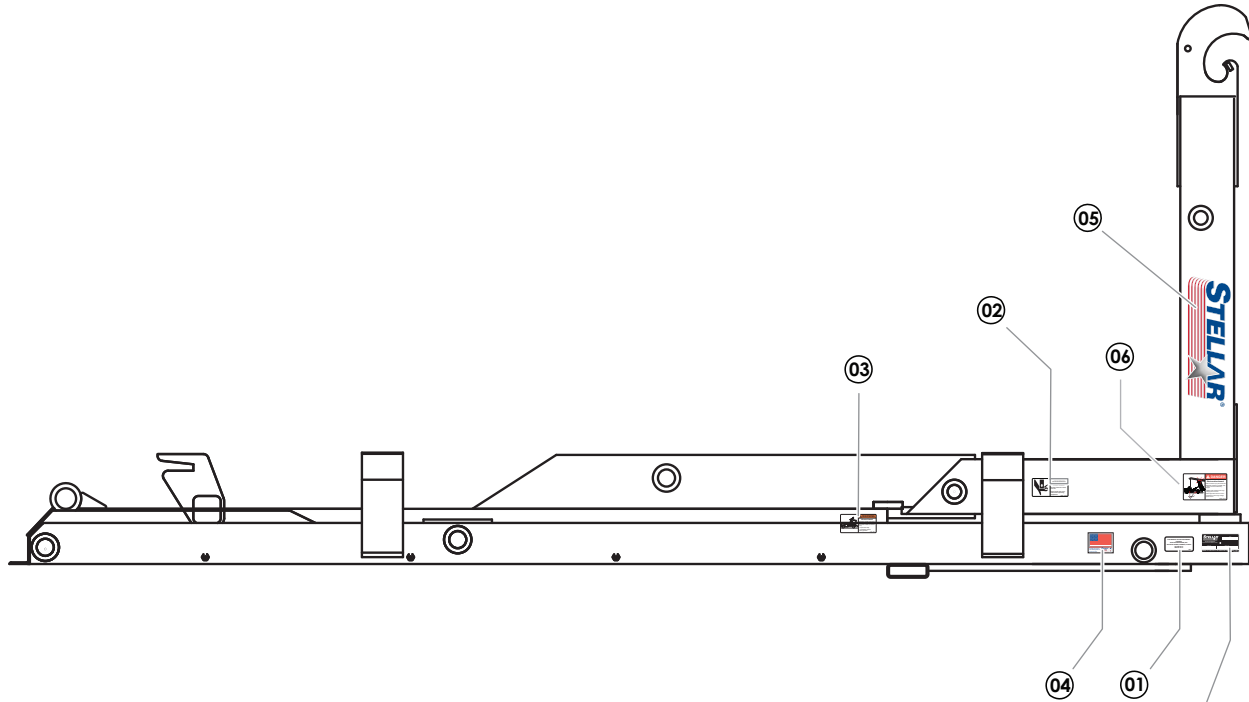


## PN 100617

ITEM	PART No.	DESCRIPTION	QTY.	ITEM	PART No.	DESCRIPTION	QTY.
1	46121	FENDER WLDMT STEEL TANDEM KP60	2	10	46119	WLDMT TUBE FRONT FENDER PC BLACK	2
2	0537	NUT 0.50-13 HH	4	11	46117	TUBE FRONT FENDER SUPPORT PC BLACK	2
3	46590	CAP SCR 0.50X1.50 SQ HD CP SS	4	12	46906	BRKT GANTRY MNT PC BLACK	4
4	47209	BRKT FENDER KP60	4	13	97704	BRKT FENDER MNT FRONT SI60/75 TANDEM STEEL	2
5	47210	FLAT 0.13X1.50X24.50 HR W/HOLE	2	14	100828	TUBE 3.00X2.00X0.19WX12.00 W/HOLE	2
6	47211	CAP .10X3.00X2.88 FENDER SI60	2	15	101886	WLDMT TUBE 2.50X2.50X0.19WX22.00	2
7	C1026	CAP SCR 0.63-11X2.50 HHGR8	16	16	101888	CAP .10X3.25X3.25 FENDER SI60	2
8	C5902	WASHER 0.63 SAE FLAT YELLOW GR8	32	17	45688	MOUNT MUD FLAP KP60	2
9	24868	NUT 0.63-11 HHGR8 NYLOC	16				

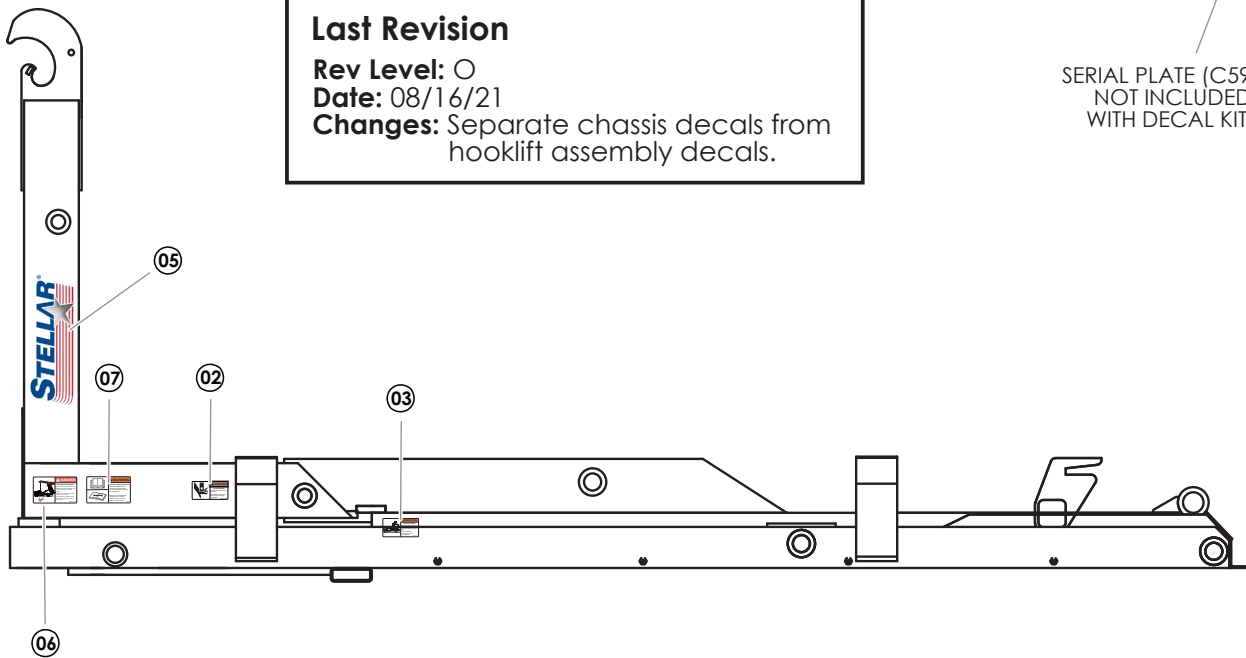


# Step 13A: Apply Hooklift Assembly Decals



**Last Revision**  
**Rev Level:** 0  
**Date:** 08/16/21  
**Changes:** Separate chassis decals from hooklift assembly decals.

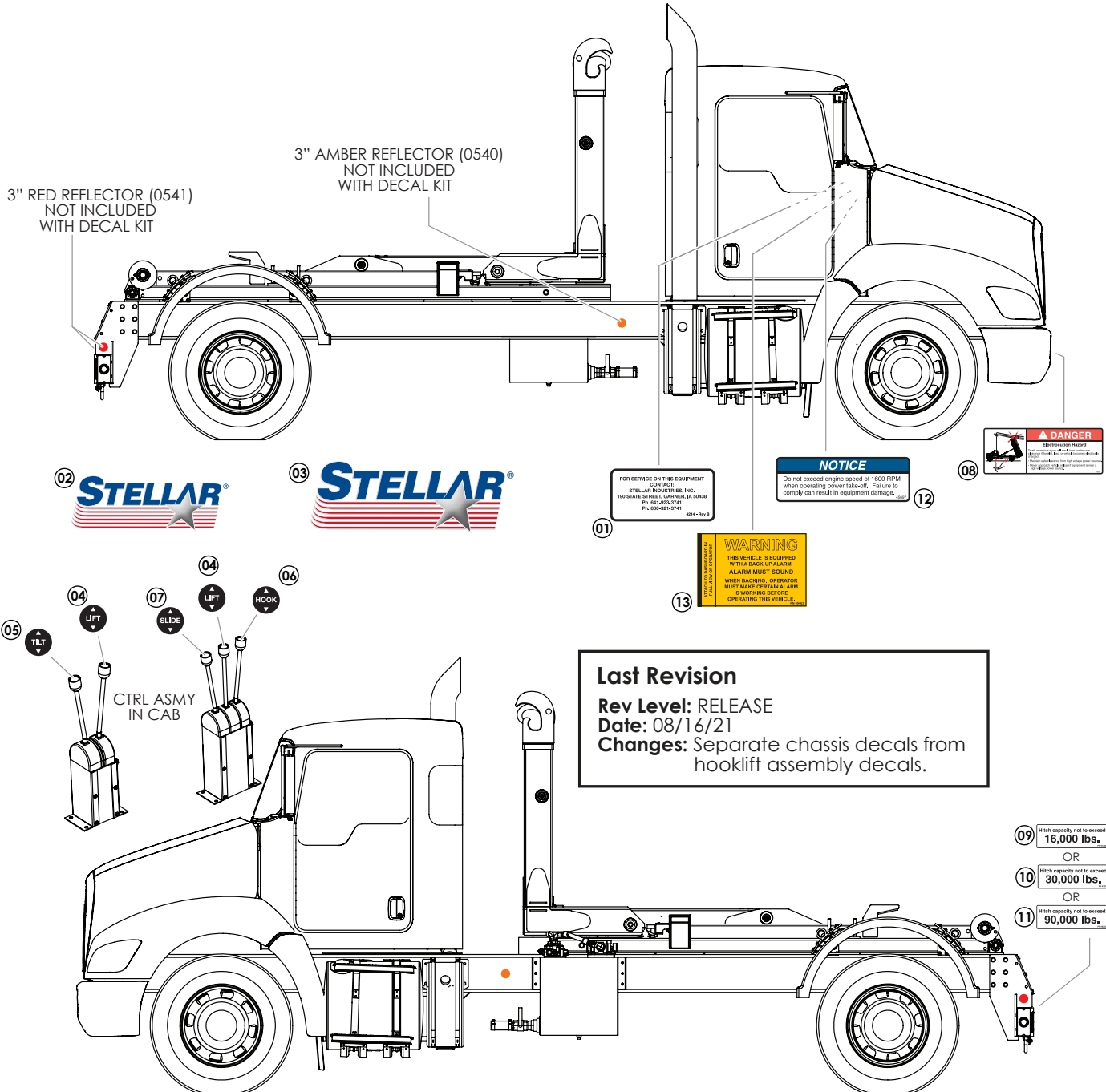
SERIAL PLATE (C5942)  
 NOT INCLUDED  
 WITH DECAL KIT



## PN D0779

ITEM	PART No.	DESCRIPTION	QTY.
01	4214	DECAL CONTACT STELLAR	1
02	25627	DECAL WARNING CRUSH	2
03	26134	DECAL WARNING MISUSE TABS	2
04	35234	DECAL STELLAR MADE IN THE USA	1
05	52681	DECAL STELLAR LOGO 6.00X16.50	2
06	55832	DECAL DANGER ELECTROCUTION HOOK	2
07	68024	DECAL WARNING UNTRAINED OPERATOR	1

# Step 13B: Apply Chassis Decals



**Last Revision**  
 Rev Level: RELEASE  
 Date: 08/16/21  
 Changes: Separate chassis decals from hooklift assembly decals.

## PN 121012

ITEM	PART No.	DESCRIPTION	SUGGESTED LOCATION	QTY.
01	4214	DECAL CONTACT STELLAR	IN CAB	1
02	53850	DECAL STELLAR LOGO 4.00X11.50	SHIPPED LOOSE - OPTIMAL PLACEMENT	1
03	52681	DECAL STELLAR LOGO 6.00X16.50	SHIPPED LOOSE - OPTIMAL PLACEMENT	1
04	39211	DECAL HOOKLIFT LEVER LIFT	CONTROL TOWER	2
05	39212	DECAL HOOKLIFT LEVER TILT	CONTROL TOWER	2
06	55414	DECAL HOOKLIFT LEVER HOOK	CONTROL TOWER	2
07	55754	DECAL HOOKLIFT LEVER SLIDE	CONTROL TOWER	2
08	79983	DECAL DANGER ELECTROCUTION	FRONT BUMPER - STREET SIDE OR REAR BUMPER - CURB SIDE	1
09	91220	DECAL HITCH CAPACITY 16K	] SELECT APPROPRIATE CAPACITY; REAR BUMPER - ABOVE PINTLE LOCATION; DISCARD OTHERS	1
10	91219	DECAL HITCH CAPACITY 30K		1
11	68222	DECAL HITCH CAPACITY 90K		1
12	45697	ENGINE SPEED PTO CAUTION	IN CAB	1
13	69463	DECAL BACK-UP ALARM VERIFY	IN CAB	1

## Step 14: Fill reservoir and activate hydraulic flow.

- Fill reservoir to site gauge, within 3" from the top (Roughly 10 Gallons). Note: ISO 32 hydraulic oil is recommended.
- When connections are secure, activate hydraulic flow by opening the ball valve on the bottom of the reservoir. This will allow oil to flow from the reservoir to the pump.

## Step 15: Operate hooklift.

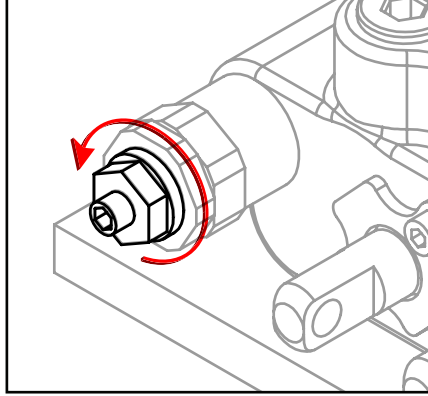
- **⚠ WARNING** Stellar® Hooklift operators must conform to the qualifications specified in the *Shuttle Hooklift Safety, Operation, Maintenance, Troubleshooting Manual*. Read and understand all manuals and safety signs before operating or servicing this equipment.
- Bleed the air out of the hydraulic system.
- Check the hydraulic oil level and add oil if needed. When checking hydraulic oil level, make certain that **all system cylinders** are fully retracted.
- Calibrate dump light system.
- Be sure to check all clearances.
- Be sure that relief pressure is no higher than 4200 PSI.

## Set System Relief Pressure

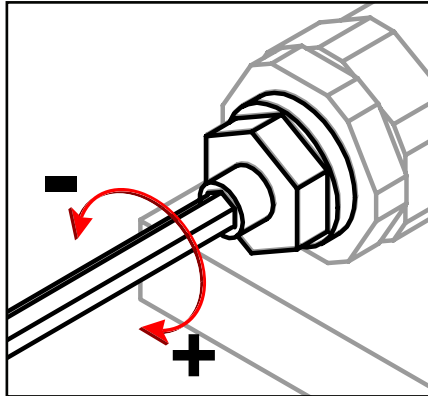
1. Engage the PTO. Run the PTO at 1200 RPM.

2. Push the lever labeled 'lift' until the boom bottoms out. Keep pushing the lever forward until the pressure is set.

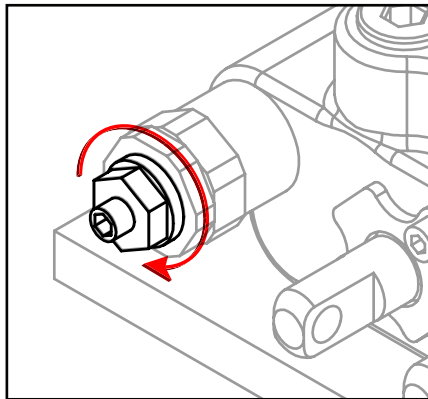
3. Locate the main relief valve and release the jam nut using a 13 mm wrench:



4. Adjust the system relief pressure using 4 mm allen wrench (See chart on previous page). Clockwise increases pressure, counter clockwise decreases pressure:



5. Once system pressure is set, tighten the jam nut to lock system pressure. Permanent thread lock should not be used:

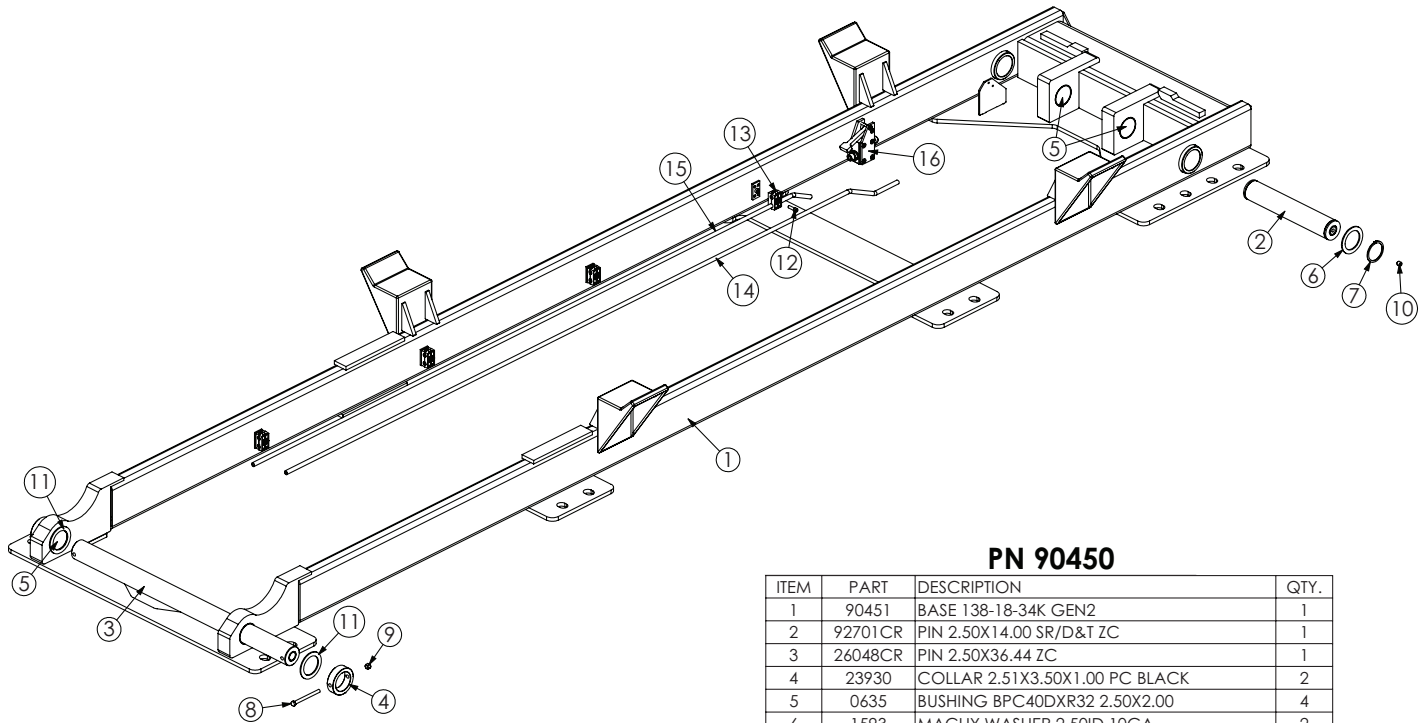


6. Release all functions and disengage the PTO. Snap tamper cap into position over the jam nut. The break away clip will be destroyed if the cap is removed.



# Chapter 3 - Assembly Drawings

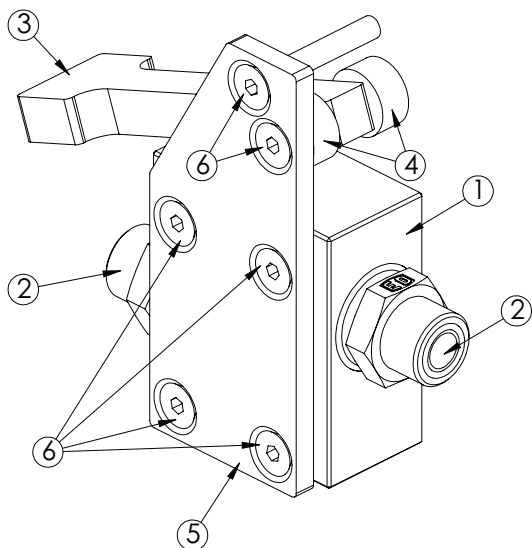
## Base Assembly - PN 90450



### PN 90450

ITEM	PART	DESCRIPTION	QTY.
1	90451	BASE 138-18-34K GEN2	1
2	92701CR	PIN 2.50X14.00 SR/D&T ZC	1
3	26048CR	PIN 2.50X36.44 ZC	1
4	23930	COLLAR 2.51X3.50X1.00 PC BLACK	2
5	0635	BUSHING BPC40DXR32 2.50X2.00	4
6	1593	MACHY WASHER 2.50ID 10GA	2
7	0636	SNAP RING 2.50 HD	2
8	32086	CAP SCR 0.38-16X4.25 HHGR5	2
9	0347	NUT 0.38-16 HHGR5 NYLOC	2
10	58052	SET SCREW 0.50-13X0.50 W/ RED PATCH	2
11	1547	THRUST WASHER 2.51DIA UHMW .12THK	4
12	6034	CAP SCR 0.31-18X1.00 SH	4
13	92791	CLAMP 0.50 PORT TUBE TWIN (1 SET)	4
14	70528	TUBE ASM 0.50 120-14 FLEX TILT RETRACT ZC	1
15	70529	TUBE ASM 0.50 120-14 FLEX TILT EXTEND ZC	1
16	98018	PLUNGER VALVE ASM 138-18-40	1

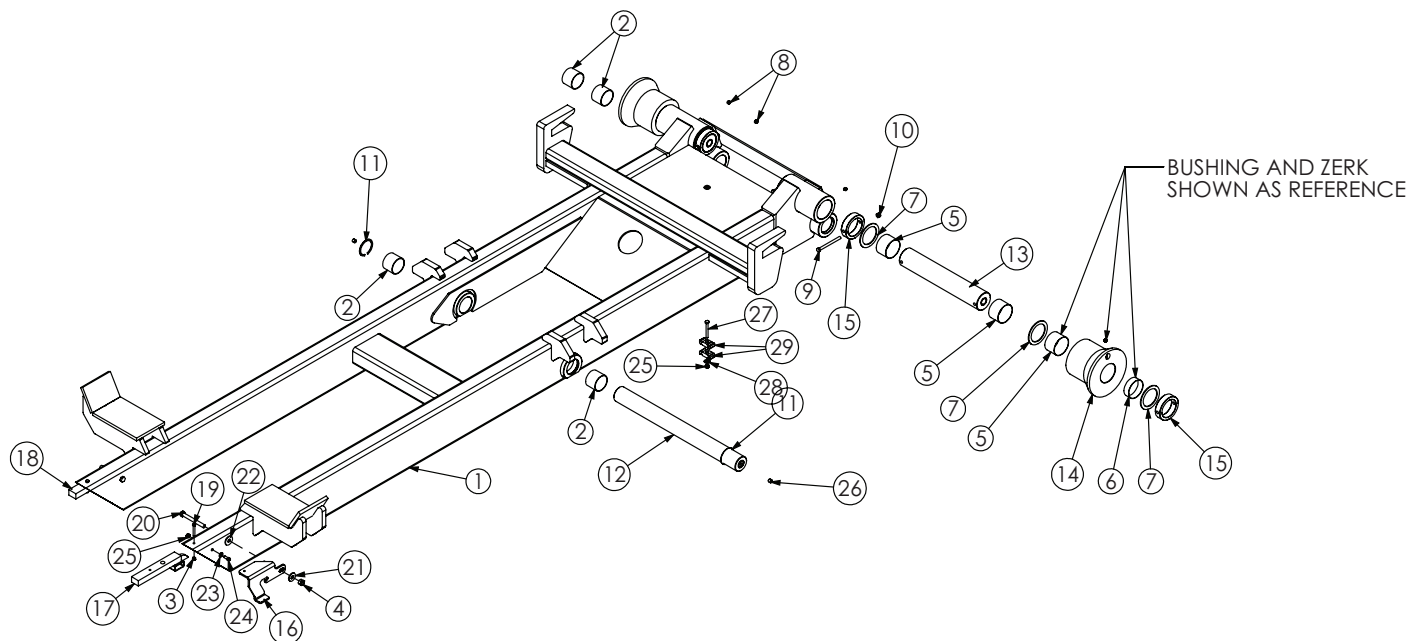
## Plunger Valve Assembly - PN 98018



### PN 98018

ITEM	PART	DESCRIPTION	QTY.
1	53853	VALVE PLUNGER VILLA HYD NORMALLY CLOSED	1
2	57735	FTG 8-8 MBSPP-MFS STRAIGHT	2
3	70293	LEVER PLUNGER VALVE FINGER	1
4	70294	COLLAR 0.28X0.75X0.38 UHMW	2
5	77784	PLATE MNT BRKT STOP SYSTEM CS HOLES	1
6	77785	CAP SCR 0.25-20X1.75 FHSH	6

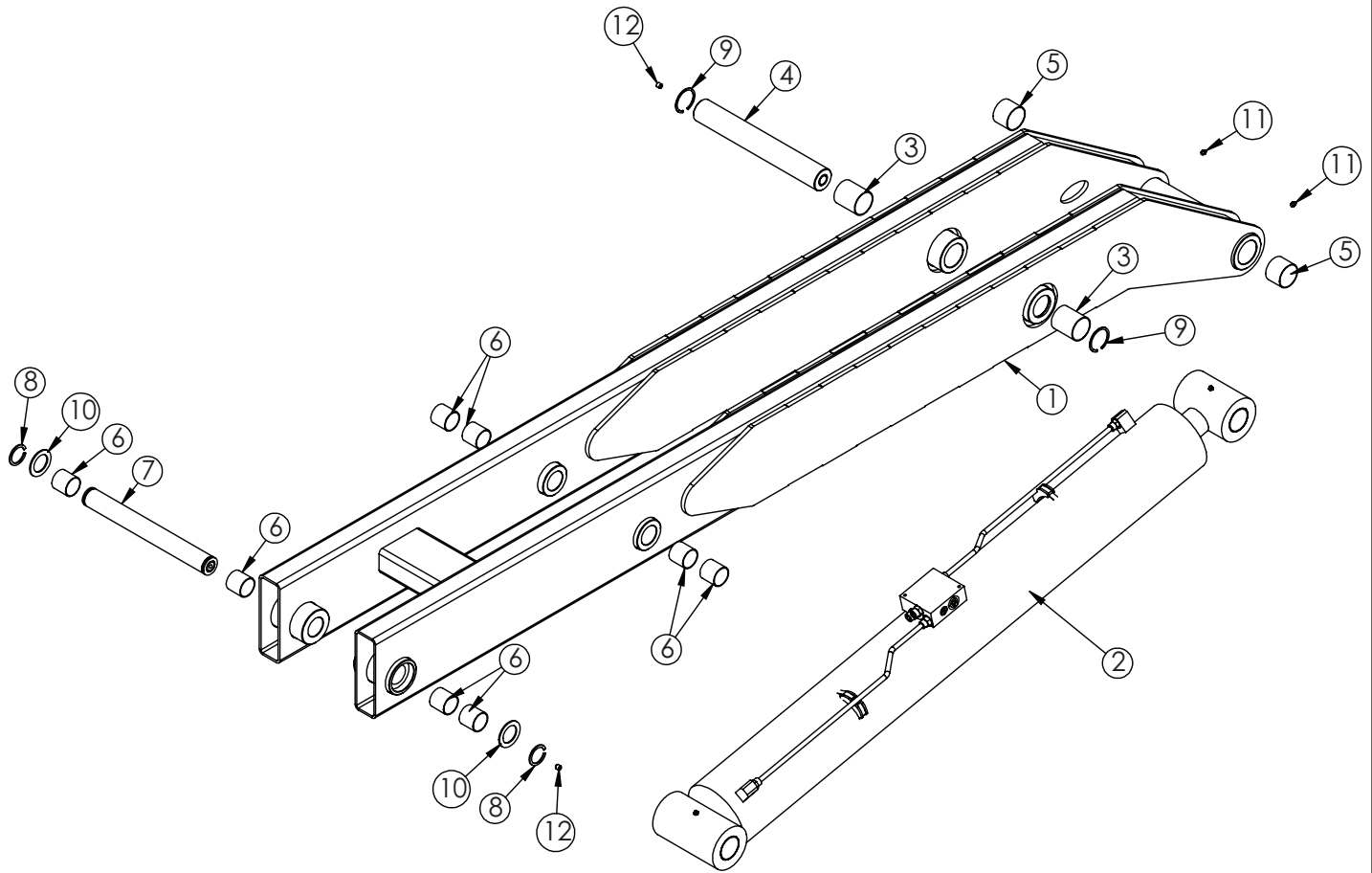
# Dump Assembly - PN 92702



## PN 92702

ITEM	PART	DESCRIPTION	QTY	ITEM	PART	DESCRIPTION	QTY
1	92703	DUMP 138-18-34K GEN2	1	16	93509	LEVER PLUNGER VALVE FORMED SHUTTLE40	1
2	0635	BUSHING 40DXR32 GARLOCK	6	17	93507	TAB LOADER WLDMT BREAK AWAY W/STOP	1
3	0333	NUT 0.25-20 HHGR5 NYLOC	2	18	95252	TAB LOADER BREAK AWAY STRAIGHT W/STOP	1
4	C6106	NUT 0.50-13 HHGR5 NYLOC	2	19	0481	CAP SCR 0.25-20X2.00 HHGR5	2
5	0865	BUSHING BPC48DXR32 3.00X2.00	6	20	0507	CAP SCR 0.50-13X4.50 HHGR5	2
6	13344	BUSHING 48DXR32 GARLOCK	2	21	0352	WASHER 0.50 USS FLAT	1
7	1548	THRUST WASHER 3.01DIA UHMW .12 THK	6	22	C4516	WASHER 0.56IDX1.50ODX0.13 THK NYLON	1
8	c1592	ZERK 1/8 NPT STRAIGHT	6	23	0340	WASHER 0.25 USS FLAT	1
9	C0954	CAP SCR 0.38-16X4.50 HHGR5	4	24	38263	CAP SCR 0.31-18X0.75 SH	1
10	0347	NUT 0.38-16 HHGR5 NYLOC	4	25	0342	NUT 0.31-18 HHGR5 NYLOC	2
11	22216	SNAP RING INSIDE 2.50	2	26	58052	SET SCREW 0.50-13X0.50 W/ RED PATCH	2
12	27376CR	PIN 2.50X26.25 D&T ZC	1	27	C0929	CAP SCR 0.31-18X2.75 HHGR5	1
13	26167CR	PIN 3.00X16.75 ZC	2	28	0343	WASHER 0.31 USS FLAT	2
14	22432	ROLLER 3.00X6.00X3.81X8.00	2	29	8622	CLAMP HOSE/TUBE AG-2	2
15	26168	COLLAR RETAINING 3.01X4.00X1.00 PC BLACK	4				

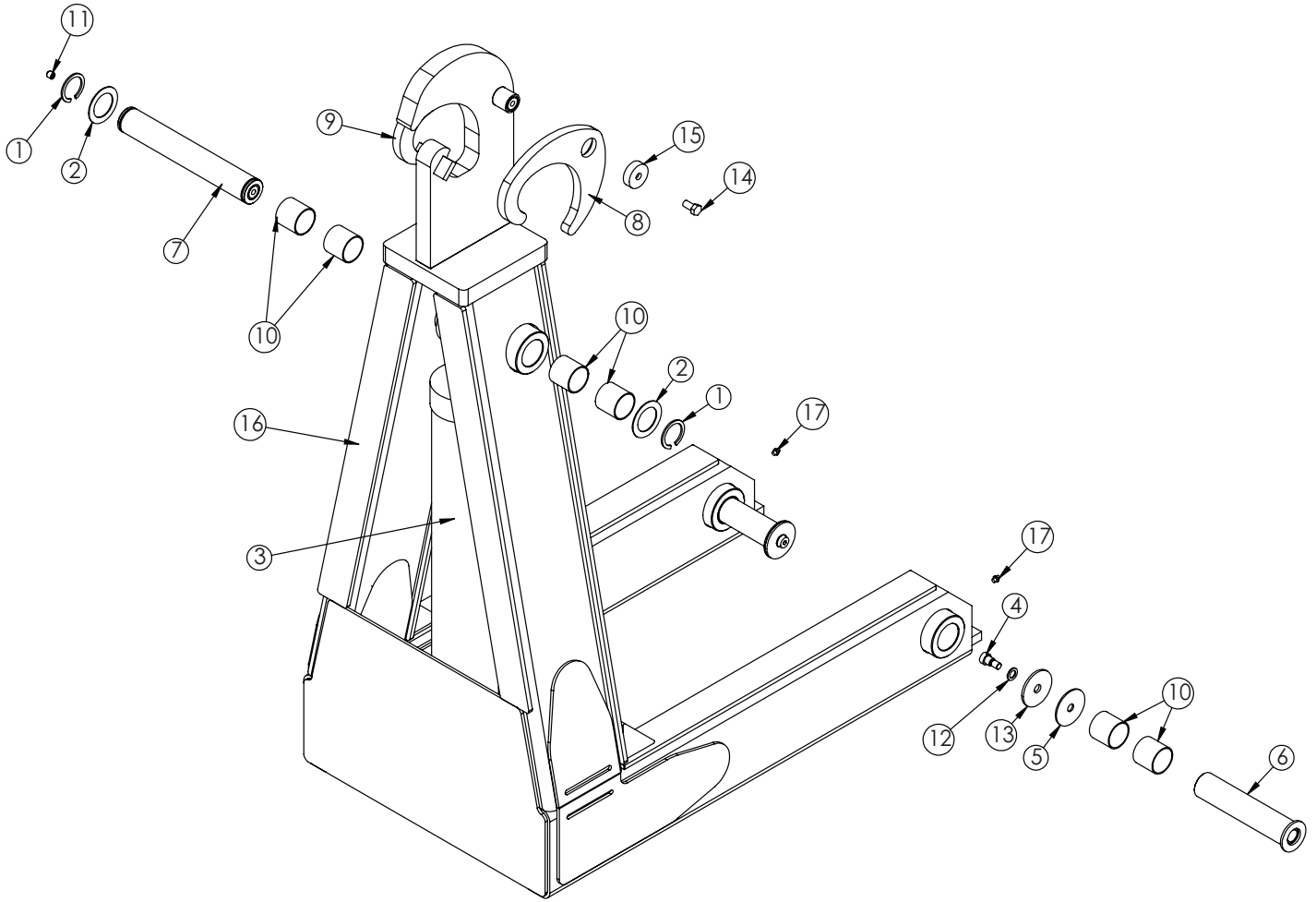
# Secondary Assembly - PN 93513



## PN 93513

ITEM	PART	DESCRIPTION	QTY
1	93514	SECONDARY 138-18-34K GEN2	1
2	44341	CYLINDER ASM 138-18-34/40	1
3	5739	BUSHING 40DXR48 GARLOCK	2
4	26378CR	PIN 2.50X17.75 ZC	1
5	0635	BUSHING 40DXR32 GARLOCK	2
6	4381	BUSHING 32DXR32 2.00X2.00 GARLOCK	8
7	30243CR	PIN 2.00X17.75 SR ZC	1
8	0108	SNAP RING 2.00 7200-200	2
9	22216	SNAP RING INSIDE 2.50	2
10	0427	MACHY WASHER 2.00ID 10GA	2
11	c1592	ZERK 1/8 NPT STRAIGHT	2
12	58052	SET SCREW 0.50-13X0.50 W/ RED PATCH	2

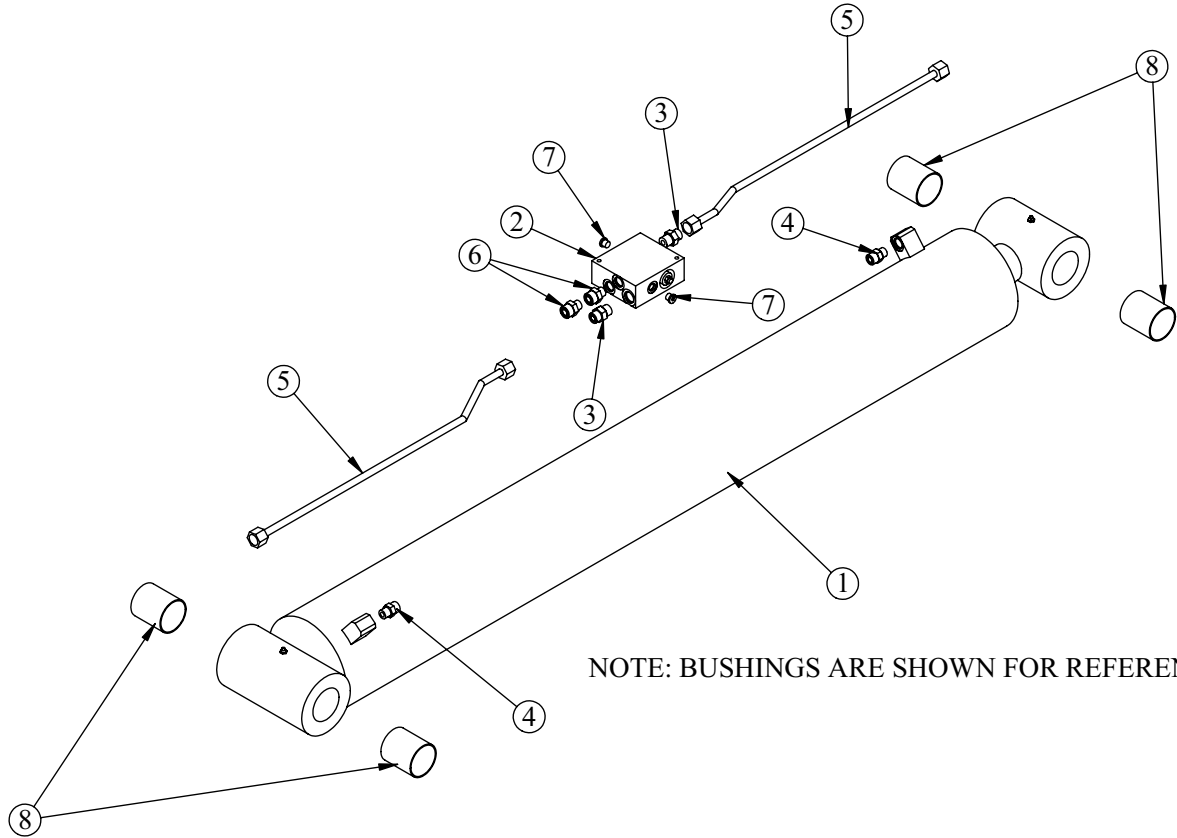
# Tilt Assembly - PN 92762



## PN 92762

ITEM	PART	DESCRIPTION	QTY
1	0108	SNAP RING 2.00 7200-200	2
2	0377	MACHY WASHER 2.00ID 14GA	2
3	0822	CYLINDER 4.00X26.50	1
4	12673	BOLT SHOULDER 0.63X0.50 0.50-13X0.75	2
5	12719	THRUST WASHER 0.64x3.00x0.125	2
6	27768CR	PIN WLDMT 2.00X9.38 ZC	2
7	28075CR	PIN 2.00X13.38 SR	1
8	28765	LATCH SS 40000K PC BLACK	1
9	28766	LATCH CS 40000K PC BLACK	1
10	4381	BUSHING 32DXR32 2.00X2.00 GARLOCK	8
11	58052	SET SCREW 0.50-13X0.50 W/ RED PATCH	1
12	75007	THRUST WASHER 0.63X1.13X0.09 MTI-10	2
13	8454	PIN CAP 0.69x3.00x0.19 YZ	2
14	8457	CAP SCR 0.50-13X1.00 SS	2
15	8818	PIN CAP 0.55X2.00X0.63 YZ	2
16	92763	TILT 138-18-34K GEN2	1
17	c1592	ZERK 1/8 NPT STRAIGHT	2

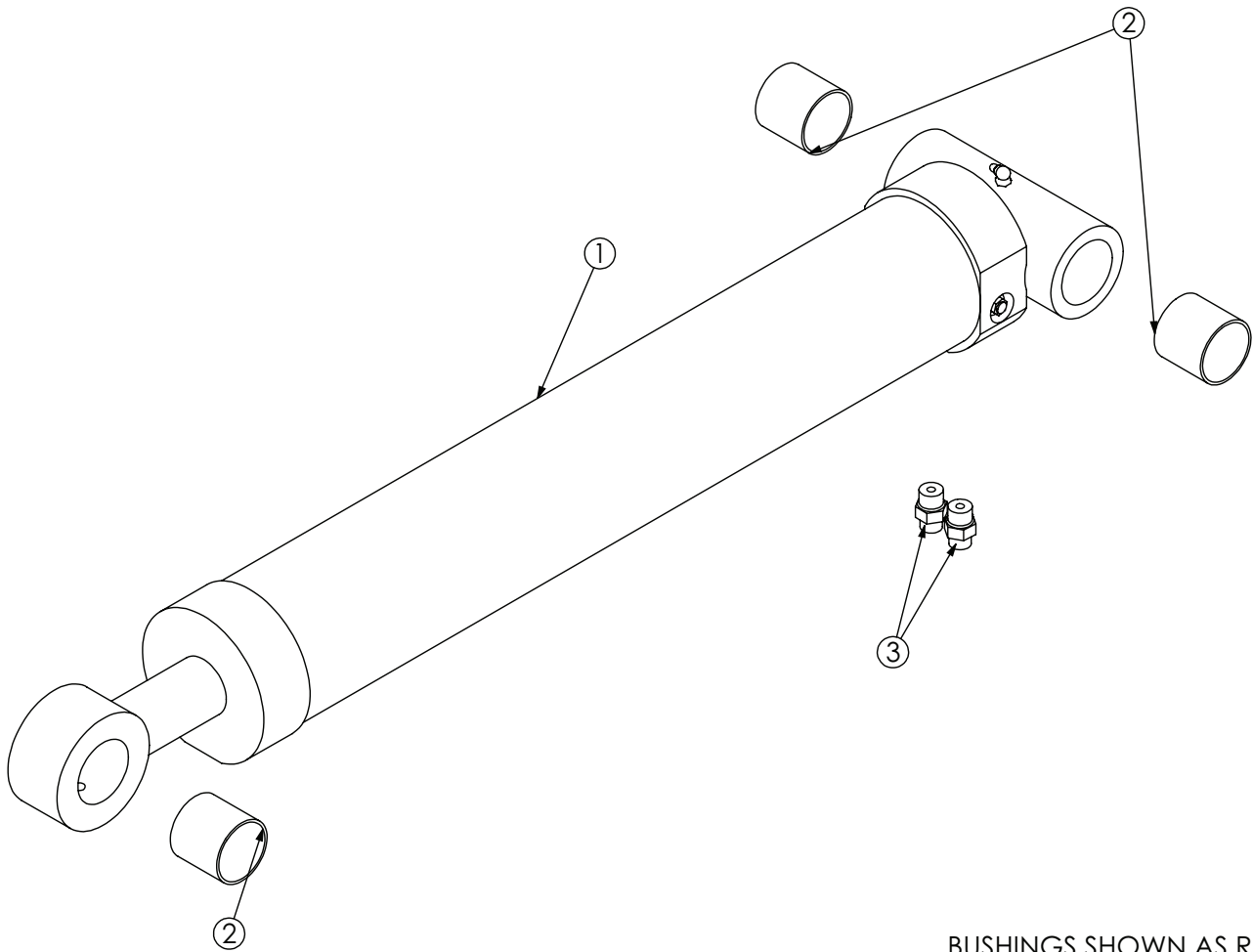
# Main Cylinder - PN 44341



## PN 44341

ITEM	PART	DESCRIPTION	QTY.
1	31242P	CYLINDER 31242 7.00X57.50 PAINT	1
2	15995	MANIFOLD ASM DUAL T2A 5000PSI	1
3	C2252	FTG ADAPT 8-10-F5OLO-S	2
4	1554	FTG ADAPT 8-F5OLO-S	2
5	18396	TUBE ASM 0.50X26.25	2
6	31053	FTG ADAPT 10-8 F5OLO-S	2
7	C4961	PLUG STR HOLLOW HEX 0.38 6-HP5ON	2
8	5739	BUSHING 40DXR48 GARLOCK	4

# Tilt Cylinder - PN 23462



BUSHINGS SHOWN AS REFERENCE

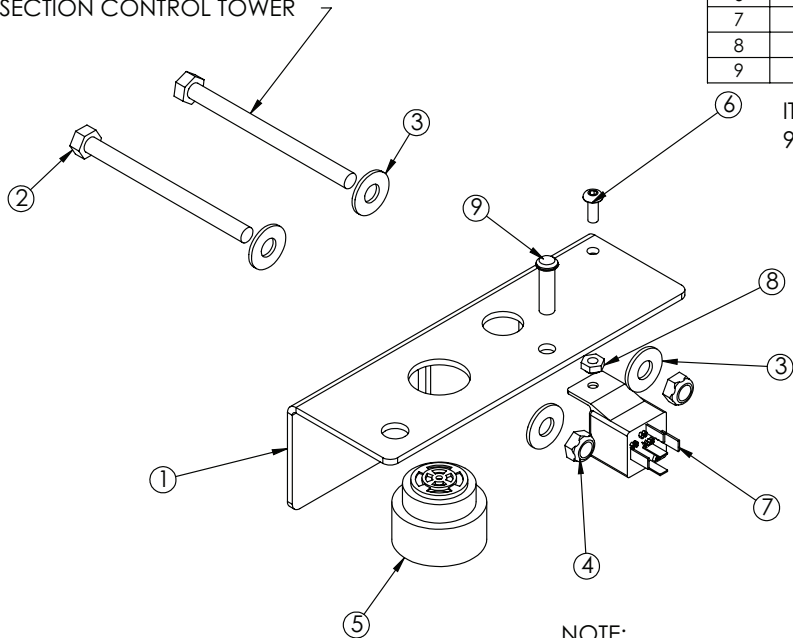
## PN 23462

ITEM	PART	DESCRIPTION	QTY.
1	0822	CYLINDER 4.00X26.50	1
2	4381	BUSHING 32DXR32 2.00X2.00 GARLOCK	3
3	C1854	FTG 6-8 MFS-MORB STRAIGHT	2

# Optional Tab Alarm Kit - PN 43120

ITEM	PART	DESCRIPTION	QTY.
1	26293	PLATE TAB ALARM MNT	1
2	0491	CAP SCR 0.31-18X4.00 HHGR5	2
3	0343	WASHER 0.31 USS FLAT ZINC	4
4	0342	NUT 0.31-18 HH NYLOC	2
5	26031	BACKUP ALARM PIEZO JAMECO 123537	1
6	D1711	CAP SCR #10-24X0.50 BTNHD SS	1
7	C6072	RELAY BOSCH 20-30 AMP	1
8	26034	NUT #10-24 HH NYLOC	1
9	61233	LIGHT LED CONTROL PANEL RED	1

NOTE: USE PN 20057 WITH 3 SECTION CONTROL TOWER

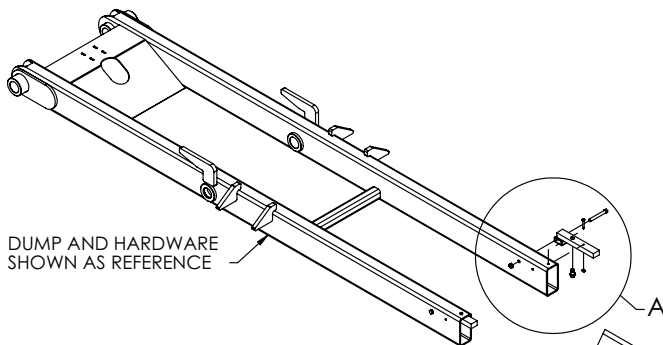


ITEMS NOT SHOWN:  
97097 -INSTRUCTIONS TAB ALARM KIT X 1

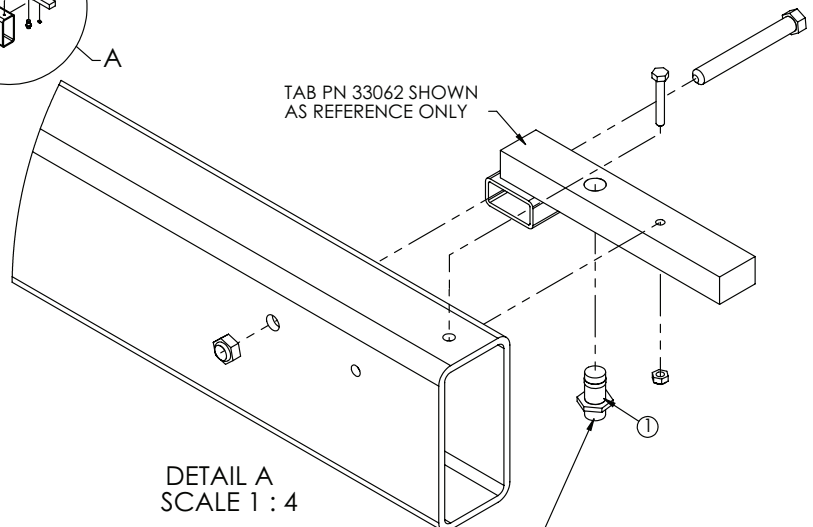
NOTE:  
WHEN USED WITH AIR CONTROL TOWERS BRACKET (PN 26293) IS NOT USED B/C COMPONENTS ARE TO BE INSTALLED IN TOWER ASSEMBLY

ITEM	PART	DESCRIPTION	QTY.
1	26287	SWITCH PROXIMITY CARLO GAVAZZI	1

NOTE: WIRE HARNESS PN 26416 RUNS FROM THE PROX SWITCH THROUGH THE BACK END OF THE DUMP TUBE AND OUT. FROM THERE THE HARNESS RUNS TO THE FRONT OF THE TRUCK ATTACHING TO THE BASE OR INBETWEEN THE TRUCK FRAME RAILS TO BE CONNECTED TO WIRE HARNESS PN 26291.



DUMP AND HARDWARE SHOWN AS REFERENCE



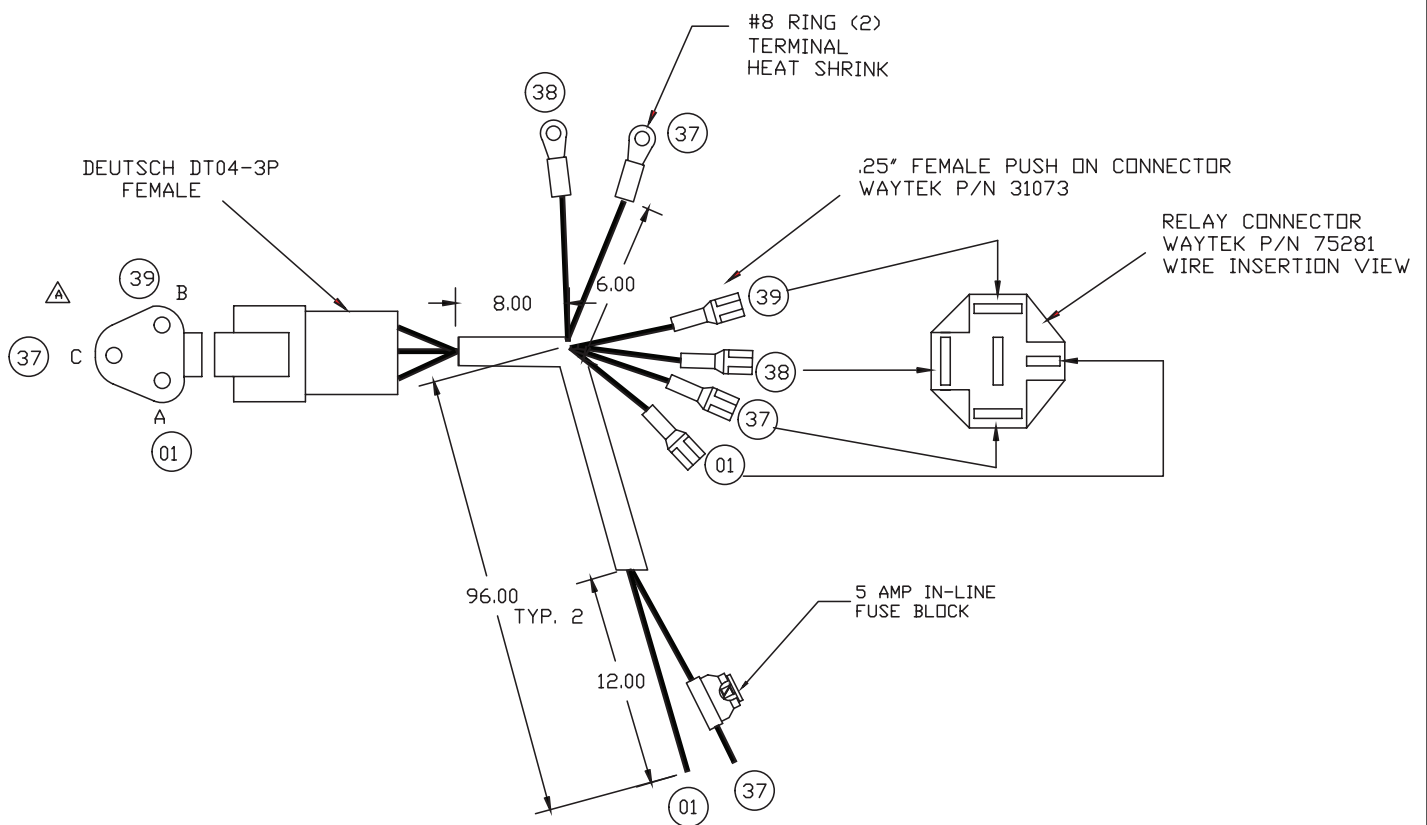
TAB PN 33062 SHOWN AS REFERENCE ONLY

DETAIL A  
SCALE 1 : 4

TO SET TAB ALARM ADJUST TO BE JUST FLUSH THEN UNSCREW 1/4 TURN AND TIGHTEN LOCK NUT.

# Optional Tab Alarm Wire Harness - PN 26291

- 1) ALL MEASUREMENTS ARE IN INCHES
- 2) ALL LOOM IS TO BE BRAIDED
- 3) EXCEPT WHERE NOTED ALL MEASUREMENTS ARE FROM THE BACK OF CONNECTORS TO THE CENTER OF HARNESS.
- 4) BRAIDING SHOULD BE 3' TO 4' BACK OF CONNECTORS EXCEPT WERE NOTED SO THAT THE CIRCUIT STAMPS ON THE WIRE ARE READABLE.
- 5) ALL LEADS ARE TO BE 16GA AND 6 INCHES UNLESS OTHERWISE NOTED.



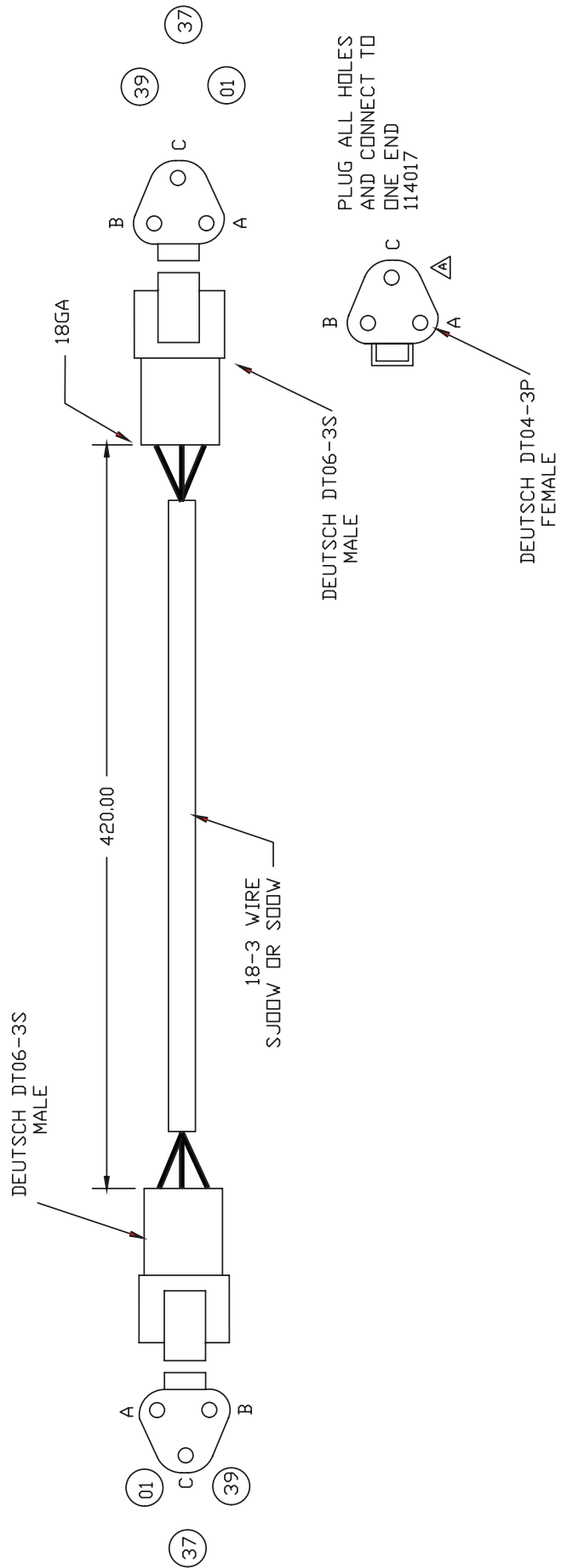
CIRCUIT #	CIRCUIT	WIRE GA	WIRE COLOR
01	GROUND	16GA	BLACK WITH WHITE TEXT
37	IGNITION	16GA	GREEN WITH WHITE TEXT
38	SAFETY GROUND	16GA	GREEN WITH WHITE TEXT
39	SAFETY SWITCH	16GA	GREEN WITH WHITE TEXT



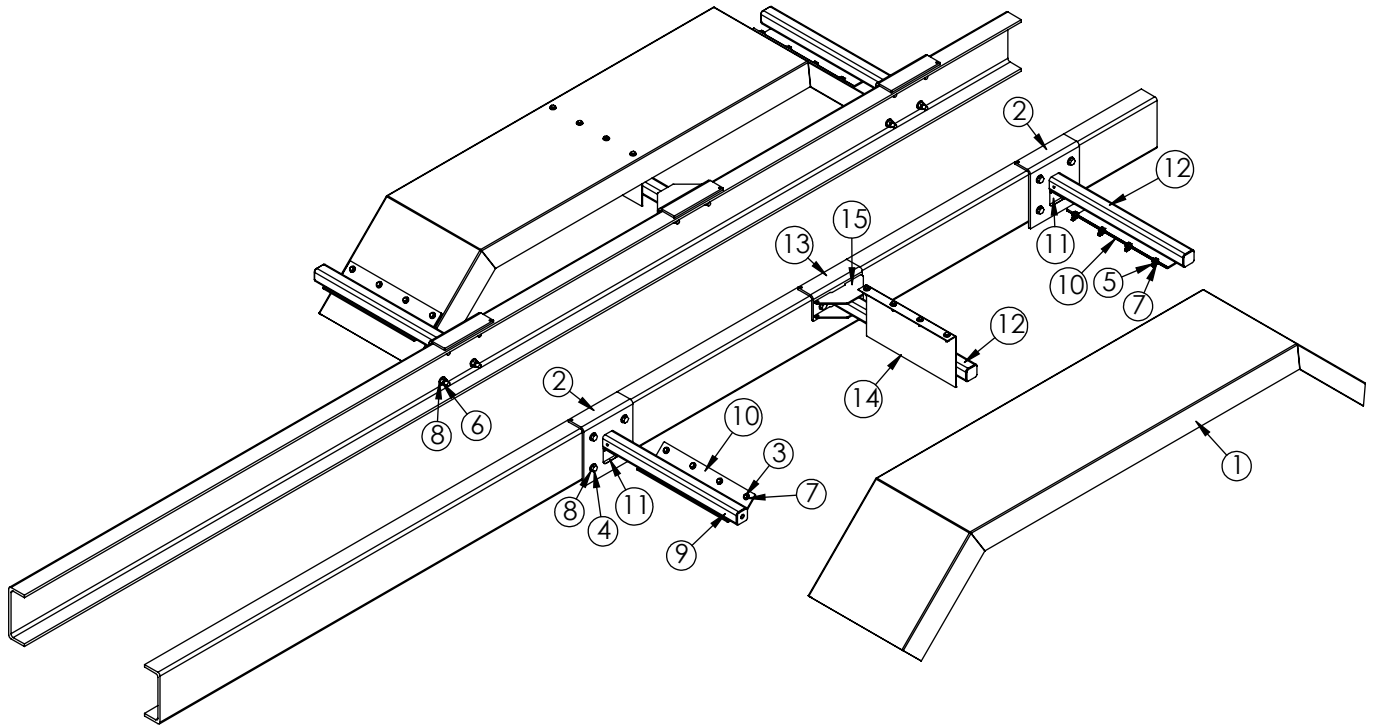
# Optional Proximity Switch Wire Harness - PN 26416

CIRCUIT #	CIRCUIT	WIRE GA	WIRE COLOR
01	GROUND	18GA	BLACK
37	IGNITION	18GA	WHITE
39	SAFETY SWITCH	18GA	GREEN

- 1) ALL MEASUREMENTS ARE IN INCHES
- 3) EXCEPT WHERE NOTED ALL MEASUREMENTS ARE FROM THE BACK OF CONNECTORS TO THE CENTER OF HARNESS.
- 4) JACKET SHOULD BE 3" TO 4" BACK OF CONNECTORS



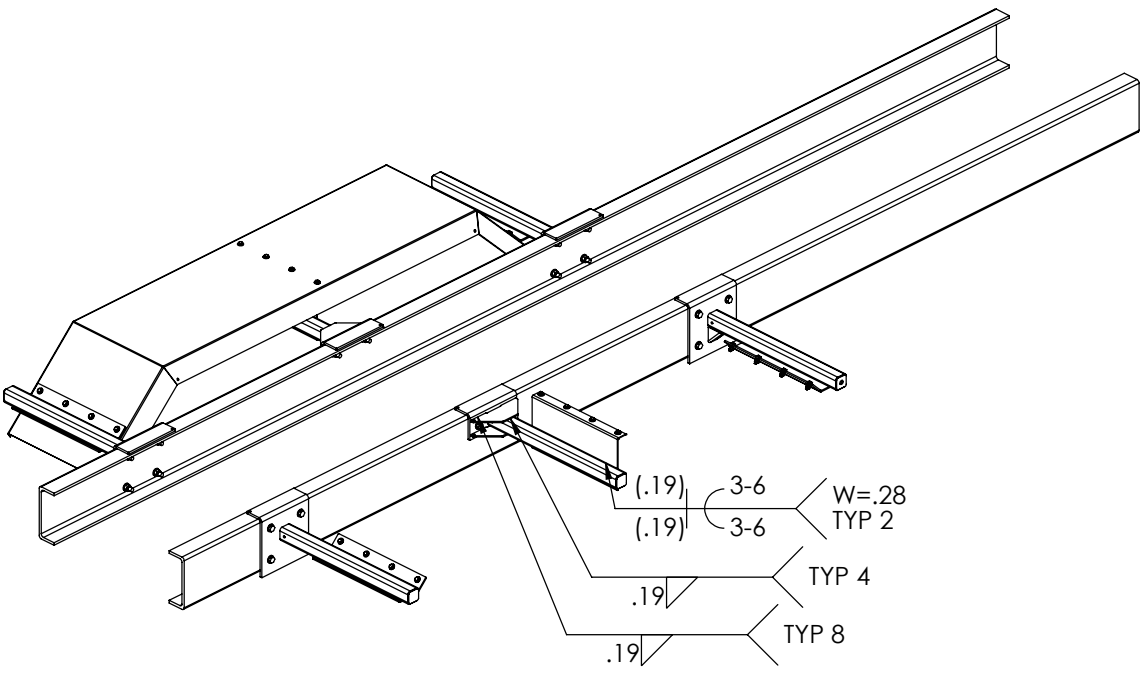
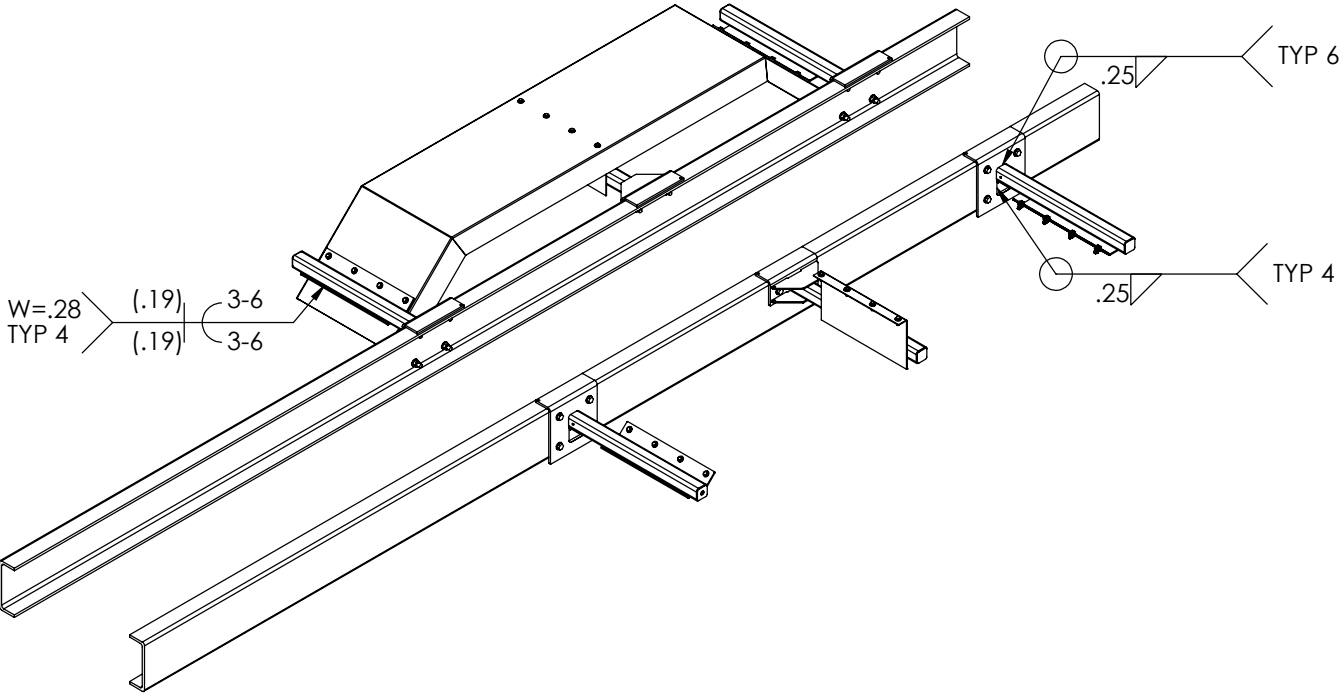
# Optional Fender Kit - PN 115695



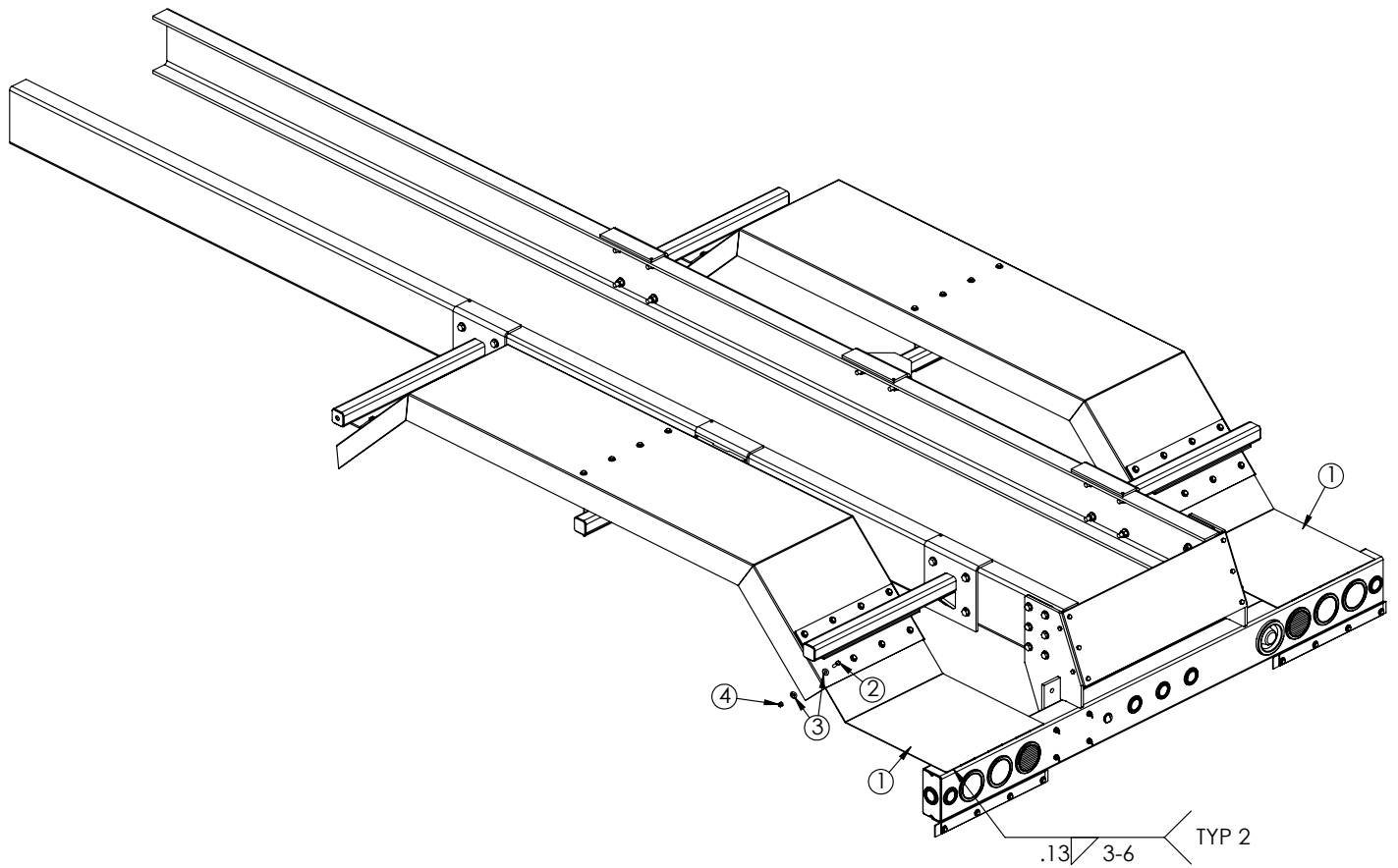
## PN 115695

ITEM	PART No.	DESCRIPTION	QTY.
01	118143	FENDER TANDEM DPS CNE W/ PAINT	2
02	118842	ANGLE FORMED 3.50X11.25X0.38X11.00	4
03	0335	CAP SCR 0.38-16X1.25 HHGR5	24
04	C1026	CAP SCR 0.63-11X2.50 HHGR8	20
05	0347	NUT 0.38-16 HHGR5 NYLOC	24
06	24868	NUT 0.63-11 HHGR8 NYLOC	20
07	0346	WASHER 0.38 USS FLAT	48
08	C5902	WASHER 0.63 SAE FLAT YELLOW GR8	40
09	118839	WLDMT TUBE 2.50X2.50X0.19WX30.00 W/HOLE	2
10	118676	BRKT FENDER MNT FRONT HOOKLIFT TANDEM STEEL	4
11	47209	BRKT FENDER KP60	3
12	118840	WLDMT TUBE 2.50X2.50X0.19WX30.00	4
13	118843	ANGLE FORMED 3.50X4.88X0.38X11.00	2
14	118837	ANGLE FORMED 10GAX2.00X10.00X20.00	2
15	118841	PLATE TAPER TUBE MID MOUNT SUPPORT	4

# Optional Fender Kit - PN 115695 cont.



# Optional Threshold Plate Kit - PN 118281



## PN 118281

ITEM	PART No.	DESCRIPTION	QTY.
01	118277	PLATE BUMPER THRESHOLD TANDEM FENDER 24IN	2
02	0335	CAP SCR 0.38-16X1.25 HHGR5	8
03	0346	WASHER 0.38 USS FLAT	16
04	0347	NUT 0.38-16 HHGR5 NYLOC	8









Subject to Change without Notification.  
© 2022 Stellar Industries, Inc.