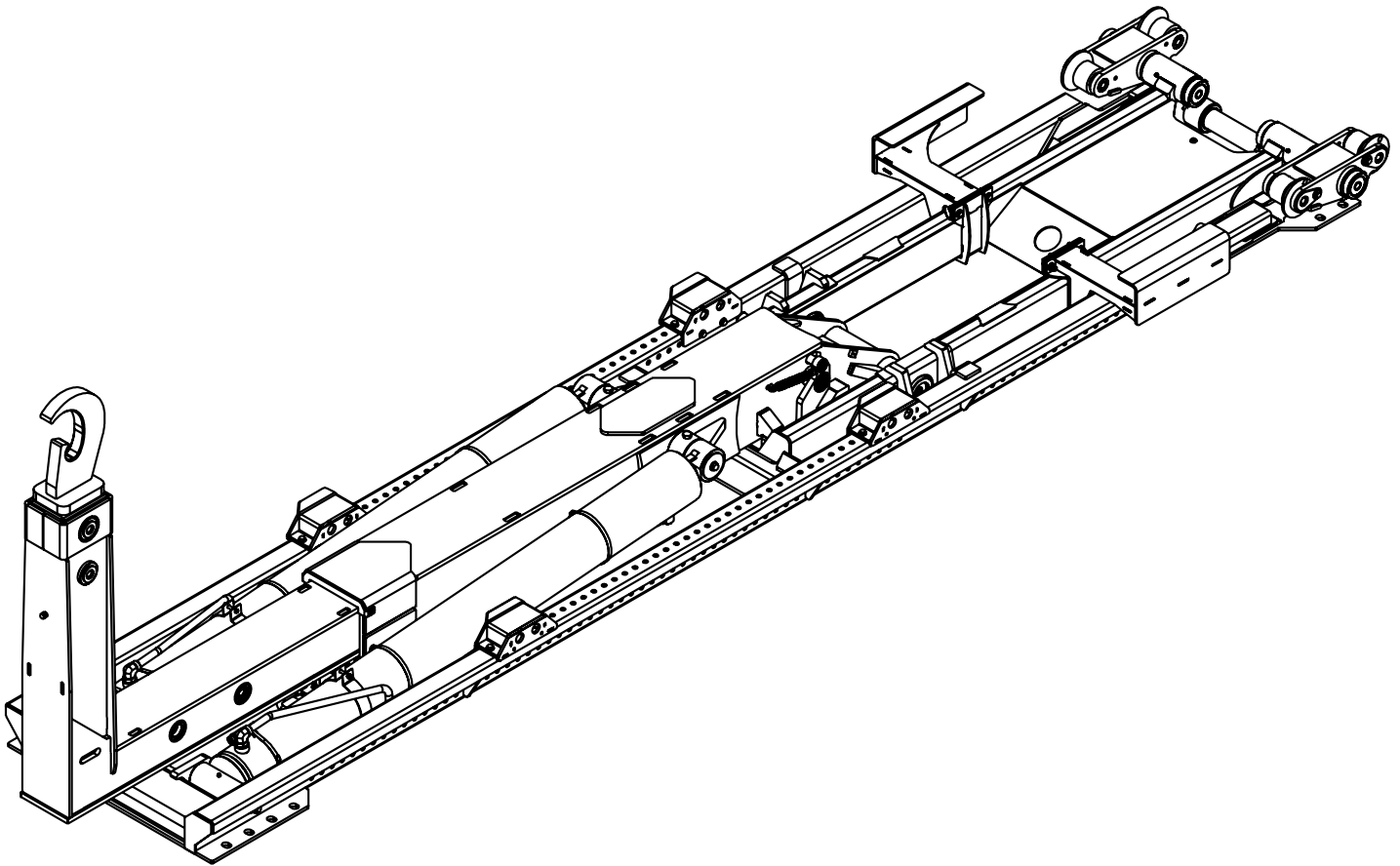




NXT40 Hooklift Parts Manual

Installation • Assembly Drawings • Parts



Stellar Industries, Inc.

190 State Street

PO Box 169

Garner, IA 50438

800-321-3741

Fax: 641-923-2811

www.stellarindustries.com

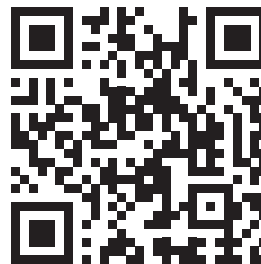
Subject to Change without Notification.
© 2023 Stellar Industries, Inc.

REV1
PN: 134594

P65 Warning / Warranty Info / Cold Weather Notice

WARNING

Operating, maintaining, and servicing a Stellar product may expose you to chemicals including, but not limited to, engine exhaust, carbon monoxide, phthalates, and lead. These chemicals are known to the State of California to cause cancer and birth defects (or other reproductive harm). To keep your exposure to a minimum, be sure to avoid breathing exhaust and service your Stellar product in a well-ventilated area while wearing gloves or washing your hands frequently. For more information, go to www.P65Warnings.ca.gov/passenger-vehicle.



www.p65warnings.ca.gov

NOTICE

Cold Weather Performance

Although clear data on cold weather performance from every steel manufacturer is not available for all types and thicknesses of steel, Stellar Industries is confident that the weldments on our products will operate to 100% of their intended purpose to temperatures down to -40° F / C.

It is recommended if Stellar manufactured equipment needs to be used in temperatures below -40° F / C, the operator should pull the unit into a climate-controlled area and allow the weldments to warm up to and then maintain a temperature above this level.

**For Technical Questions, Information, Parts, or Warranty, Call Toll-Free at
800-321-3741**

Hours: Monday - Friday, 8:00 a.m. - 5:00 p.m. CST

Or email at the following addresses:

Technical Questions, and Information

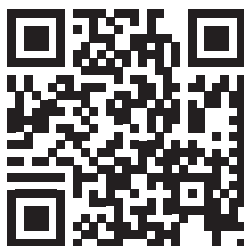
service@stellarindustries.com

Order Parts

parts@stellarindustries.com

Warranty Information

warranty@stellarindustries.com



www.stellarindustries.com

Table of Contents

Introduction	IV
Chapter 1 - Specifications	1
NXT40 Specifications	2
NXT40 Specifications - Continued	3
Serial Tag Location	4
Chapter 2 - Assembly Drawings.....	5
NXT40 Base Assembly - PN 129228	6
NXT40 Base Assembly - PN 129228 Parts List	7
NXT40 Dump Assembly - PN 128940	8
NXT40 Dump Assembly - PN 128940 Parts List	9
NXT40 Secondary/Dump Latch Asm - PN 131234	10
NXT40 Secondary/Dump Latch Asm - PN 131234 Parts	11
NXT40 Main Cylinder Assembly - PN 131233.....	12
NXT40 Main Cylinder Assembly - PN 131233 Parts List.....	13
NXT40 Jib Asm 54/62HH, Manual PN 129059	14
NXT40 Jib Asm 54/62HH, Manual PN 129059 Parts List.....	15
NXT40 Jib Asm 54/62HH, Hydraulic PN 129244	16
NXT40 Jib Asm 54/62HH, Hydraulic PN 129244	17
NXT40 Hose Track Assembly PN 130154	18
NXT40 Hose Track Assembly PN 130154 Parts List.....	19
NXT40 Cylinder Assembly PN 127967	20
NXT40 Cyl Asm 4.00 x 48.00 - PN 127968	22
NXT40 Cyl Asm 4.00 x 48.00 - PN 127968 Parts List.....	23
Chapter 3 - Auxillary Assemblies	25
Mounting Kit - PN 129440	26
Mounting Kit - PN 129440 Parts List	27
Reservoir Assembly - PN 130144	28
Reservoir Assembly - PN 130144 Parts List	29
Valve Bank - PN 135329	30
Valve Bank - PN 135329 Parts List	31
Valve Bank - PN 25940	32
3-Section Valve Bank Assembly- PN 135330.....	34
3-Section Valve Bank Assembly- PN 135330 Parts List.....	35
3-Sect Valve Bank Asm w Port Relief - PN 47562	36
Hose Kit - PN 129649.....	38
3-Section Hose Kit - PN 132321	39
Controller Asm, 2-Sect w/VB Asm PN 135331	40
Controller Asm, 2-Sect w/VB Asm PN 135331 Parts List.....	41
Controller Asm, 3-Sect w VB Asm PN 135332	42
Controller Asm, 3-Sect w VB Asm PN 135332 Parts List.....	43
Air Schematic Control Tower Asm PN 132688	44
Air Schematic Control Tower Asm PN 132688 Parts List.....	45
Electrical Schematic PN 132702.....	46
Face Seal / O-Ring Size Chart.....	48
Torque Data Chart.....	49
Torquing Information & Warnings	49
Raised Hoist Indicator Light Kit - PN 127153.....	50
Raised Hoist Indicator Light Kit - PN 127153 Parts List.....	51
Chapter 4 - Accessory Drawings	53
Saddle Asm Skid Plate - PN 129504.....	54
Saddle Asm Skid Plate - PN 129504 Parts List.....	55
Saddle Asm Roller - PN 129373.....	56
Saddle Asm Roller - PN 129373 Parts List.....	57
NXT40 Outside Latch Asm Bolt On - PN 129856.....	58
NXT40 Outside Latch Asm Bolt On - 129856 Parts List.....	59
NXT40 Outside Latch Assembly Location - PN 132902.....	60
Skid Drawing 61.75HH - PN 134591.....	61
Skid Drawing 54.00HH - PN 134590.....	62
NXT40 Hooklift Decals - PN 133455.....	63

Introduction

A copy of this manual is provided with every hooklift and can be found in the hard plastic manual case that is installed on the chassis. A copy of this manual shall remain with the hooklift at all times.

Throughout the manual, three signal words will be used to bring attention to important items:

NOTICE

NOTICE indicates a practice not related to physical injury.

⚠ WARNING

WARNING indicates a hazardous situation which, if not avoided, could result in death or serious injury.

⚠ DANGER

DANGER indicates a hazardous situation which, if not avoided, will result in death or serious injury.

Information contained within this manual does not cover operation, maintenance, or troubleshooting. Please refer to the General Hooklift Operator's Manual, part number 127718 for details on these items.

This manual is not binding. Stellar Industries, Inc. reserves the right to change, at any time, any or all of the items, components, and parts deemed necessary for product improvement or commercial/production purposes. This right is kept with no requirement or obligation for immediate mandatory updating of this manual.

If more information is required or technical assistance is needed, or if you feel that any part of this manual is unclear or incorrect, please contact the Stellar Customer Service Department by phone at 800-321-3741 or email at service@stellarindustries.com.



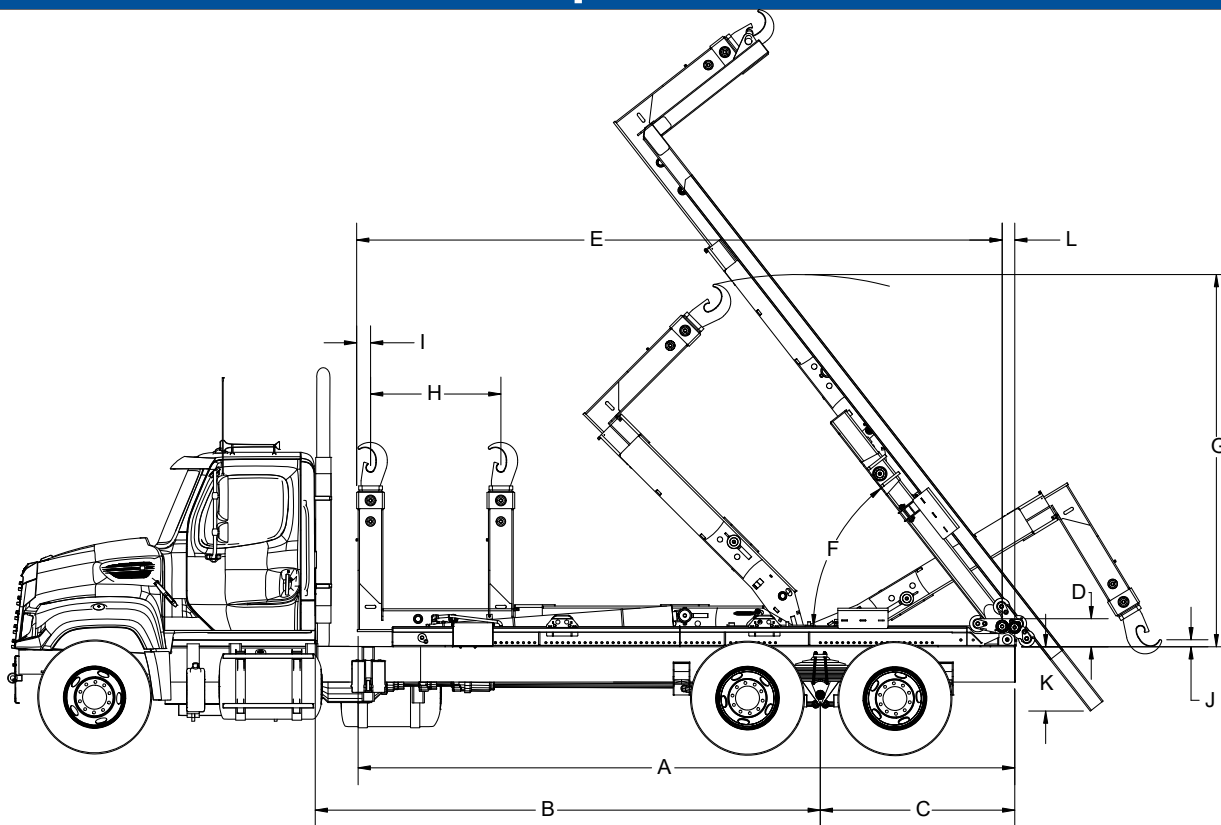
www.stellarindustries.com

Chapter 1 - Specifications

Chapter Contents

NXT40 Specifications.....	2
NXT40 Specifications - Continued	3
Serial Tag Location.....	4

NXT40 Specifications



		NXT40S	NXT40L
A	OVERALL LENGTH	229.50" (5,829 MM)	242.50" (6,160 MM)
B	CAB-TO-AXLE RANGE	174" TO 202" (4,449 TO 5,181 MM)	182" TO 214" (4,623 TO 5,436 MM)
C	AFTER FRAME RANGE	59" (1,498 MM)	64" (1,626 MM)
D	LOADER HEIGHT	10.50" (267 MM)	
E	FRONT OF JIB TO CENTERLINE OF ROLLER	227" (5,766 MM)	240" (6,096 MM)
F	DUMP ANGLE	52°	
G	MAX TILT HEIGHT	54" HH: 137.13" (3,483 MM) 62" HH: 141.38" (3,591 MM)	
H	JIB TRAVEL	35" (889 MM)	48" (1,219 MM)
I	FRONT OF JIB TO CENTERLINE OF HOOK	5.19" (132 MM)	
J	HOOK BELOW FRAME	54" HH: 3" (76 MM) ABOVE FRAME 62" HH: 3.56" (90 MM) BELOW FRAME	
K	LOWEST POINT OF DUMP*	23.63" (600 MM)	
L	CENTERLINE TO BACK OF ROLLER	6" (152 MM)	

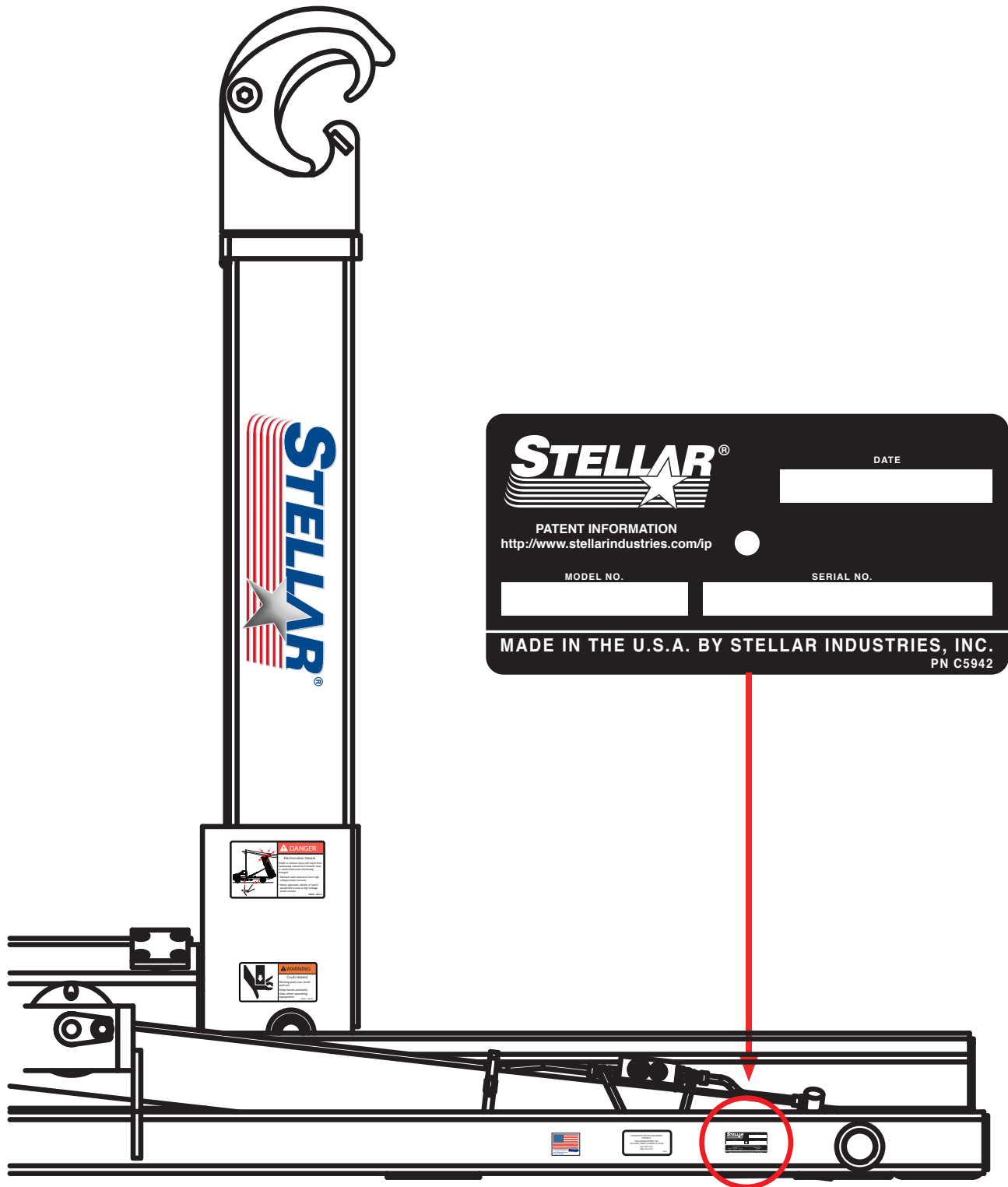
*ASSUMES 3' OVERHANG FROM CENTER OF REAR ROLLER PIN. (BUMPER TYPICALLY 12" FROM CENTER OF ROLLER PIN)

NXT40 Specifications - Continued

NXT40	
HOOK HEIGHT:	54" (1,372 mm) OR 61.75" (1,568 mm)
LIFT CAPACITY	54" HH: 40,000 LBS (18,144 kg)
	61.75" HH: 40,000 LBS (18,144 kg)
DUMP CAPACITY:	40,000 LBS (18,144 kg)
CYCLE TIMES	TILT/DUMP EXTEND - 25 SECONDS
	TILT/DUMP RETRACT - 70 SECONDS
	JIB EXTEND - 11 SECONDS
	JIB RETRACT - 10 SECONDS
	(TIMES BASED ON 24 GPM OF OIL FLOW.)
SHIPPING WEIGHT:	LONG/SHORT VERSION - MANUAL JIB: 5,590 LBS (2,535 kg)
	(WITHOUT RESERVOIR AND BODY LOCKS.)
	LONG/SHORT VERSION- HYDRAULIC JIB: 5,695 LBS (2,583 kg)
BODY LENGTHS:	SHORT VERSION: 16' - 20' (4,877 - 6,096 mm)
	LONG VERSION: 16' - 22' (4,877 - 6,706 mm)
MIN. TRUCK GVWR:	50,000 LBS (22,680 kg)
MAXIMUM HYDRAULIC FLOW:	24 GPM (90.8 Lpm)
OPERATING PRESSURE	4,500 PSI (310 Bar)
COMPONENTS	MAIN COMPONENTS ARE MANUFACTURED WITH HIGH-STRENGTH STEEL. GREASABLE BUSHINGS AT ALL PIVOT POINTS. ALL PINS ARE ZINC-PLATED CARBON STEEL AS STANDARD WITH AN OPTION TO UPGRADE TO TYPE 17-4 STAINLESS PINS.

Serial Tag Location

The serial tag should be located on the right side (passenger side) of the base assembly:

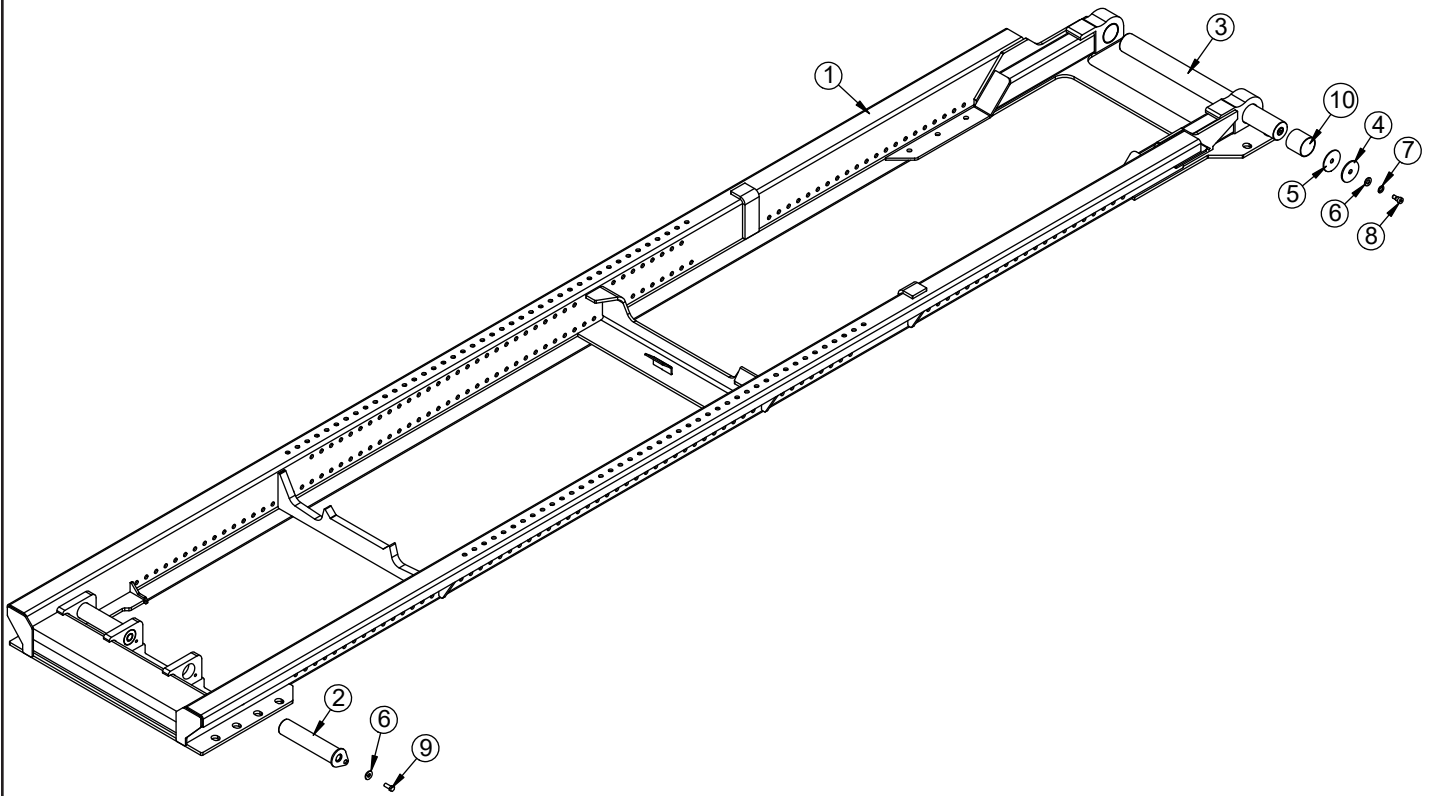


Chapter 2 - Assembly Drawings NXT52

Chapter Contents

NXT40 Base Assembly - PN 129228	6
NXT40 Base Assembly - PN 129228 Parts List	7
NXT40 Dump Assembly - PN 128940.....	8
NXT40 Dump Assembly - PN 128940 Parts List.....	9
NXT40 Secondary/Dump Latch Asm - PN 131234	10
NXT40 Secondary/Dump Latch Asm - PN 131234 Parts.....	11
NXT40 Main Cylinder Assembly - PN 131233	12
NXT40 Main Cylinder Assembly - PN 131233 Parts List	13
NXT40 Jib Asm 54/62HH, Manual PN 129059	14
NXT40 Jib Asm 54/62HH, Manual PN 129059 Parts List	15
NXT40 Jib Asm 54/62HH, Hydraulic PN 129244	16
NXT40 Jib Asm 54/62HH, Hydraulic PN 129244	17
NXT40 Hose Track Assembly PN 130154	18
NXT40 Hose Track Assembly PN 130154 Parts List	19
NXT40 Cylinder Assembly PN 127967	20
NXT40 Cyl Asm 4.00 x 48.00 - PN 127968.....	22
NXT40 Cyl Asm 4.00 x 48.00 - PN 127968 Parts List.....	23

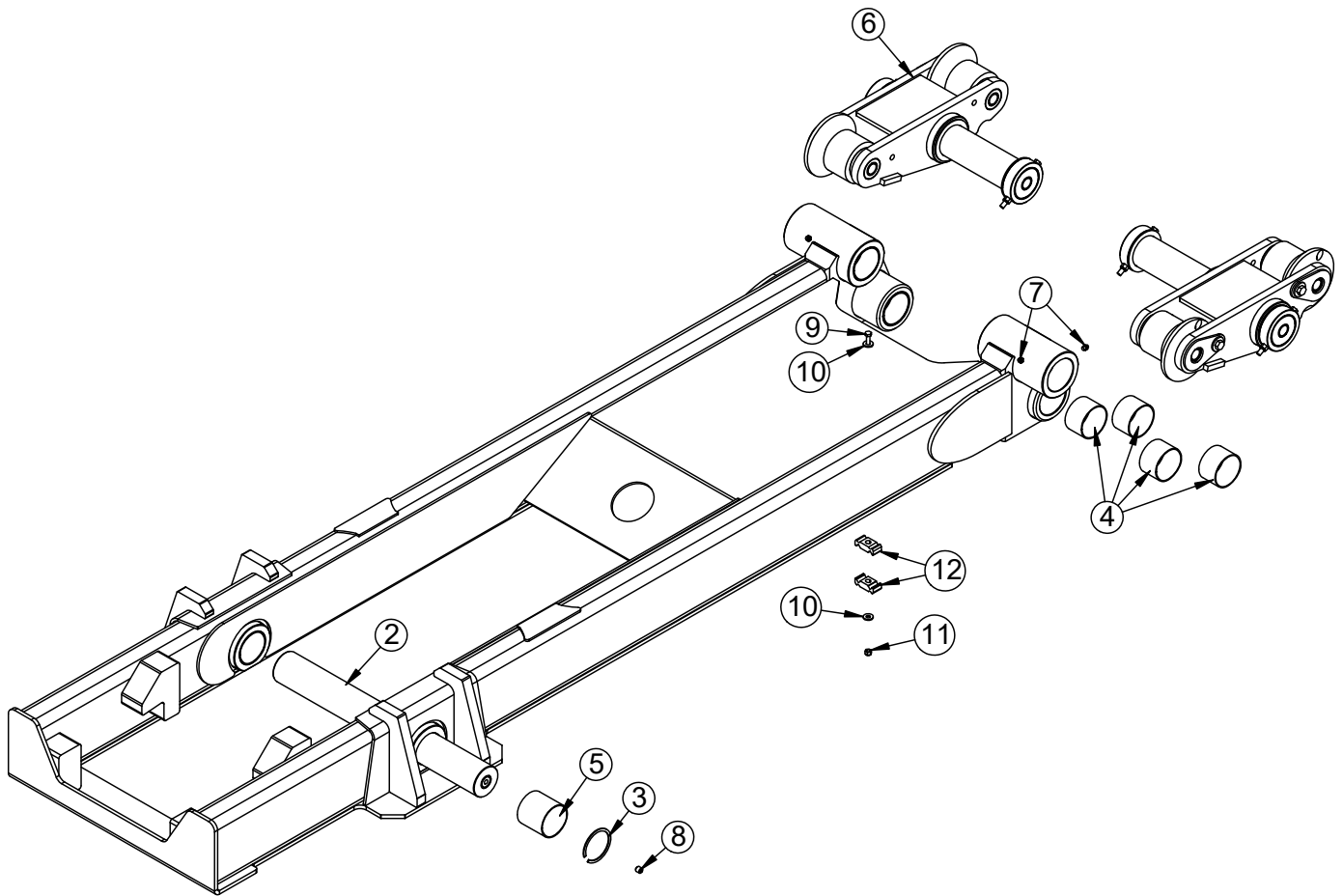
NXT40 Base Assembly - PN 129228



NXT40 Base Assembly - PN 129228 Parts List

PN 129228			
ITEM	PART	DESCRIPTION	QTY
1	129229	BASE NXT52	1
2	129433CR	PIN TEAR DROP 2.50X11.38 ZC	2
3	129370CR	PIN 3.00X32.63 D&T ZC	1
4	8455	PIN CAP 0.69X3.50X0.19 YZ	2
5	12921	THRUST WASHER 0.64X3.50X0.125	2
6	0352	WASHER 0.50 USS FLAT	4
7	12711	THRUST WASHER 0.63 DIA	2
8	12673	BOLT SHOULDER 0.63X0.50 0.50-13X0.75	2
9	0498	CAP SCR 0.50-13X1.25 HHGR5	2
10	2227	BUSHING BPC48DXR48 3.00X3.00	2
INITIAL RELEASE			

NXT40 Dump Assembly - PN 128940

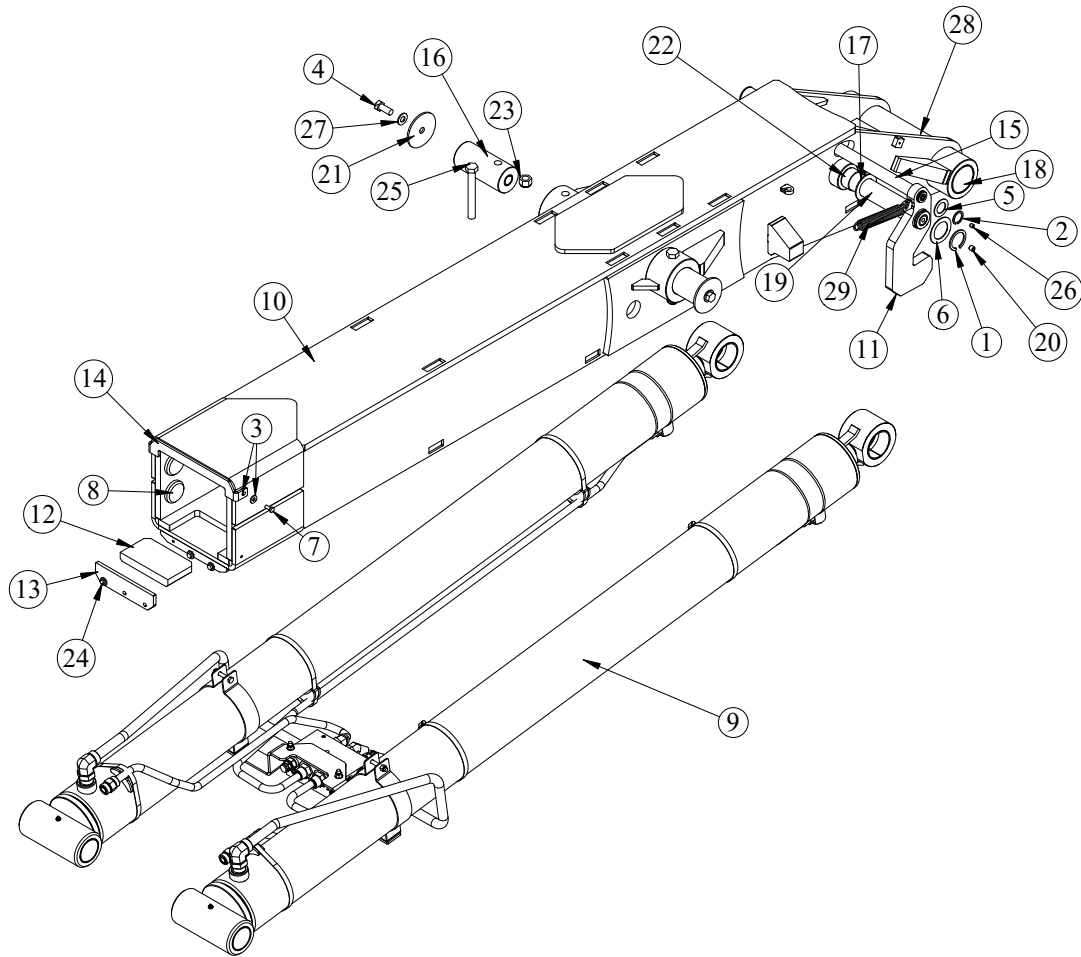


NXT40 Dump Assembly - PN 128940 Parts List

PN 128940

ITEM	PART	DESCRIPTION	QTY
1	128941	DUMP NXT52	1
2	129439CR	PIN 3.00X24.88 D&T ZC	1
3	2200	SNAP RING INSIDE 3.00 3000-X300	2
4	0865	BUSHING BPC48DXR32 3.00X2.00	8
5	2227	BUSHING BPC48DXR48 3.00X3.00	2
6	129436	ROLLER ASM NXT52	1
7	C1592	ZERK 1/8 NPT STRAIGHT	4
8	58052	SET SCREW 0.50-13X0.50 W/ RED PATCH	1
9	C0929	CAP SCR 0.31-18X2.75 HHGR5	1
10	0343	WASHER 0.31 USS FLAT	2
11	0342	NUT 0.31-18 HHGR5 NYLOC	1
12	8622	CLAMP HOSE/TUBE AG-2	2
REV A			

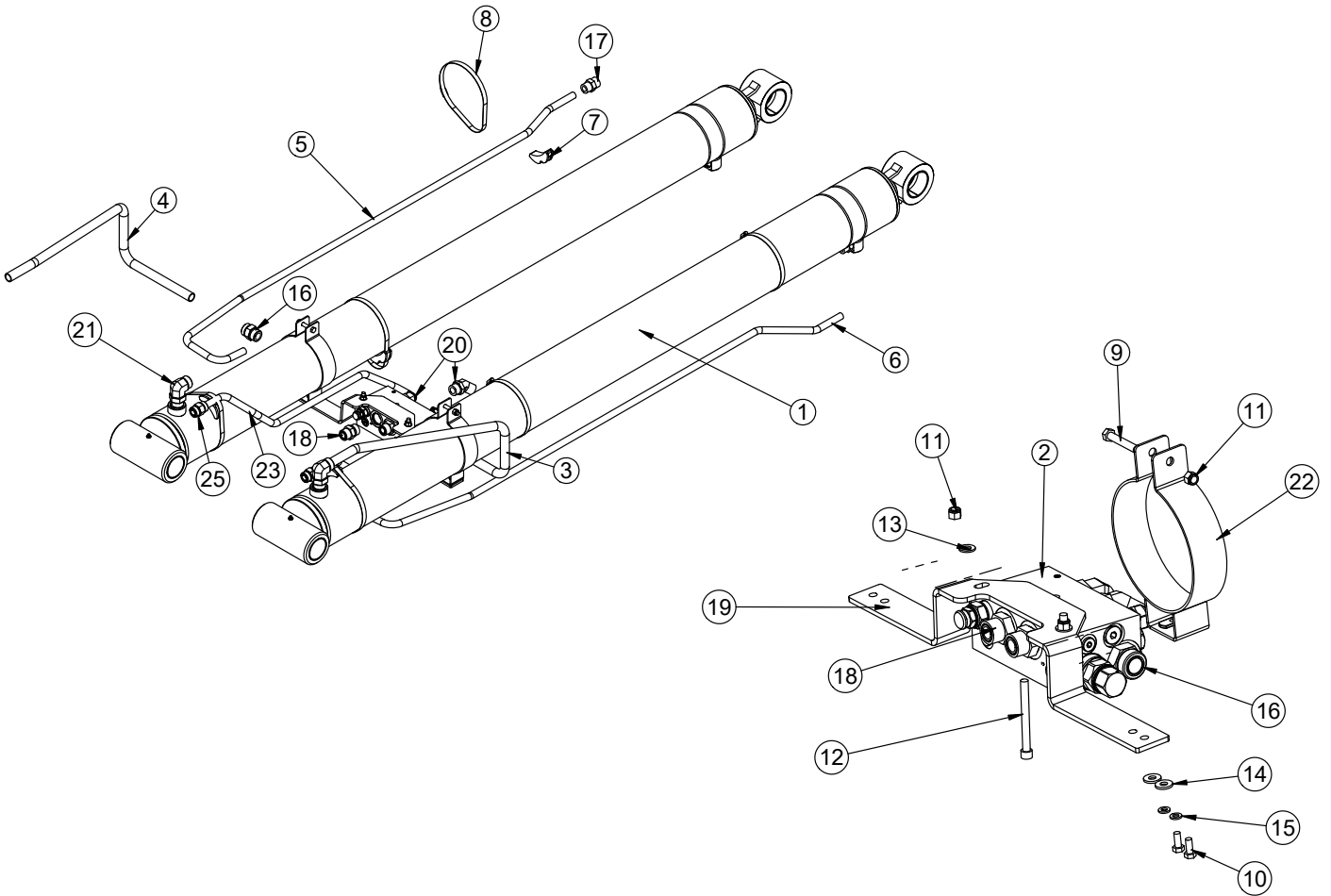
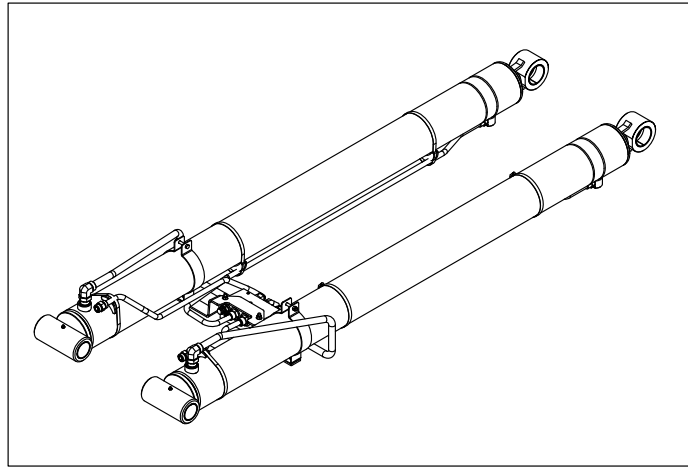
NXT40 Secondary/Dump Latch Asm - PN 131234



NXT40 Secondary/Dump Latch Asm - PN 131234 Parts

PN 131234			
ITEM	PART	DESCRIPTION	QTY
1	0108	SNAP RING 2.00 7200-200	2
2	0171	SNAP RING 1.25 ID 7200-125	2
3	0343	WASHER 0.31 USS FLAT	7
4	0356	CAP SCR 0.63-11X1.50 HHGR8	2
5	0374	MACHY WASHER 1.25ID 14GA	2
6	0377	MACHY WASHER 2.00ID 14GA	2
7	0420	CAP SCR 0.31-18X0.75 HHGR5	2
8	114019	WEAR PAD 0.50X2.50 RND	4
9	131233	CYLINDER ASM NXT40	1
10	129353	SECONDARY NXT52	1
11	129354	LATCH DUMP NXT52	2
12	129481	WEAR PAD 1.00IN NXT52 SECONDARY	2
13	129482	PLATE WEAR PAD COVER SEC NXT52	1
14	129483	PLATE WEAR PAD COVER NXT52	1
15	129484	PIN 1.25X16.63 SR ZP	1
16	129485CR	PIN 3.00X6.56 D&T W/HOLE ZP	2
17	1546	THRUST WASHER 2.01DIA UHMW .12THK	2
18	2227	BUSHING BPC48DXR48 3.00X3.00	2
19	24610CR	PIN 2.00X16.88 SR/D&T ZC	1
20	58052	SET SCREW 0.50-13X0.50 W/ RED PATCH	2
21	8597	PIN CAP 0.69X4.00X0.19 YZ	2
22	8819	BUSHING BPC32DXR16 2.00X1.00	2
23	C0538	NUT 0.75-10 HHGR8 NYLOC	2
24	C0922	CAP SCR 0.31-18X1.00 HHGR5	3
25	C1029	CAP SCR 0.75-10X6.00 HHGR8	2
26	C3397	SET SCREW 0.38-16X0.38 W/ RED PATCH	1
27	C5902	WASHER 0.63 SAE FLAT YELLOW GR8	2
28	C1592	ZERK 1/8 NPT STRAIGHT	3
29	54817	SPRING 1.00ODX0.125X4.50	2
REV. INITIAL RELEASE			

NXT40 Main Cylinder Assembly - PN 131233

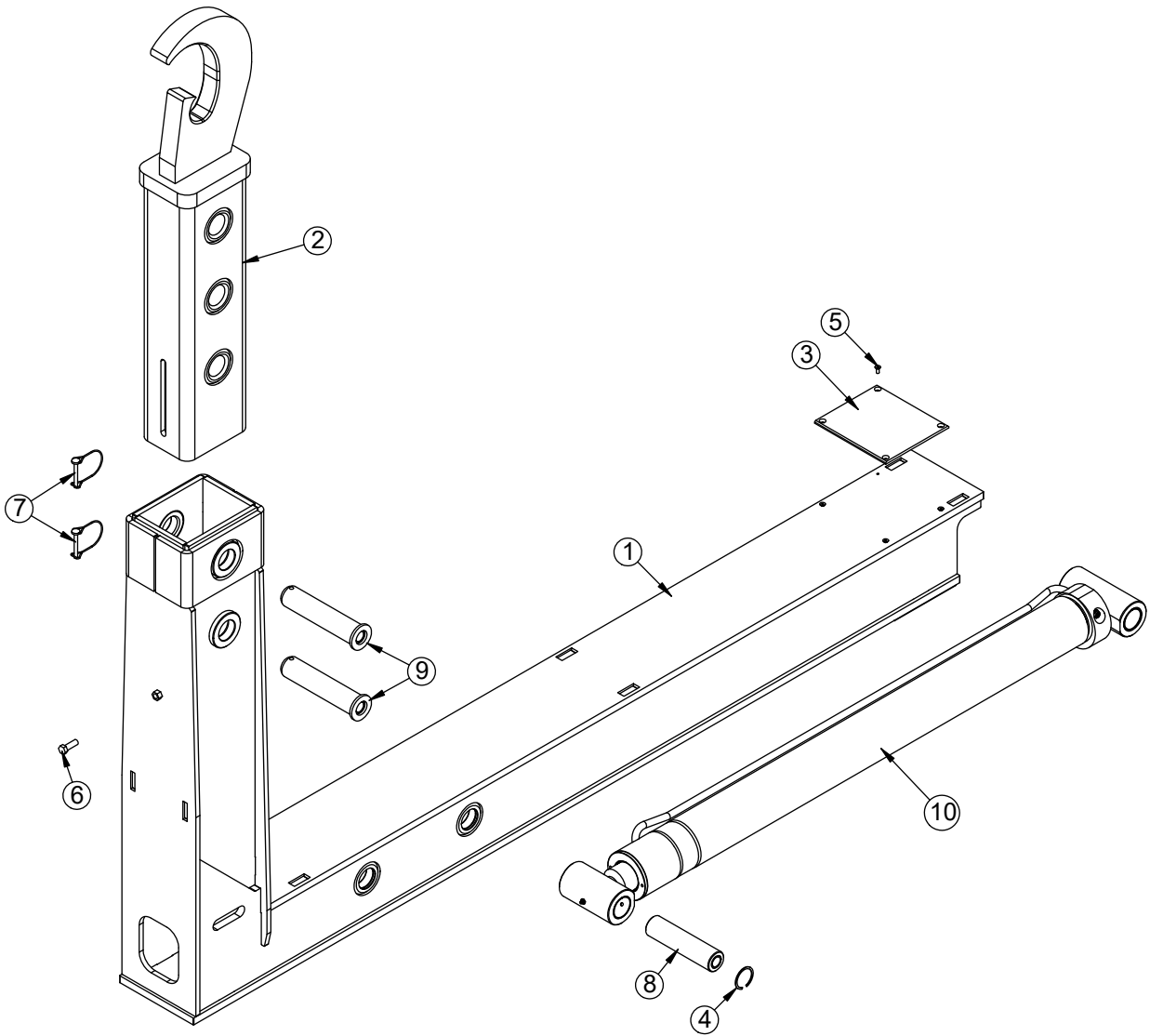


NXT40 Main Cylinder Assembly - PN 131233 Parts List

PN 131233			
ITEM	PART	DESCRIPTION	QTY
1	130145	CYLINDER 6.00X82.00 REGEN	2
2	74788	VALVE REGEN SLIDER50	1
3	129551	TUBE ASM 1.00 NXT52 SS ZC	1
4	129550	TUBE ASM 1.00 NXT52 CS ZC	1
5	129553	TUBE ASM 0.75 NXT52 CS ZC	1
6	129552	TUBE ASM 0.75 NXT52 SS ZC	1
7	18701	CLAMP PORT TUBE ZR518	6
8	19370	HOSE CLAMP 5.63-8.50 5416K39	6
9	C0946	CAP SCR 0.38-16X2.25 HHGR5	2
10	0420	CAP SCR 0.31-18X0.75 HHGR5	4
11	0347	NUT 0.38-16 HHGR5 NYLOC	4
12	11898	CAP SCR 0.38-16X3.75 SH	2
13	C6353	WASHER 0.38 SAE FLAT YELLOW GR8	2
14	0343	WASHER 0.31 USS FLAT	4
15	0522	WASHER 0.31 LOCK	4
16	63180	FTG 16-16 MFS-MORB STRAIGHT	2
17	C2142	FTG 12-12 MFS-MORB STRAIGHT	2
18	C2269	FTG 12-16 MFS-MORB STRAIGHT	2
19	129554	BRKT CYL CROSSMEMBER NXT52	1
20	7351	FTG ST TH ELBOW 45 DEG 12V5OLO	2
21	59959	FTG 16-16 MFS-MAORB 90	2
22	131235	WLDMT BRKT CYL MOUNT NXT40 BLACK	2
23	132686	TUBE ASM 0.75 NXT52 REGEN VALVE CS ZC	1
24	132687	TUBE ASM 0.75 NXT52 REGEN VALVE SS ZC	1
25	C4864	FTG 12-12 MFS-MFS STRAIGHT	2
REV. A			

NOTE:
SEAL KIT PN 134587-BOBLEE.

NXT40 Jib Asm 54/62HH, Manual PN 129059



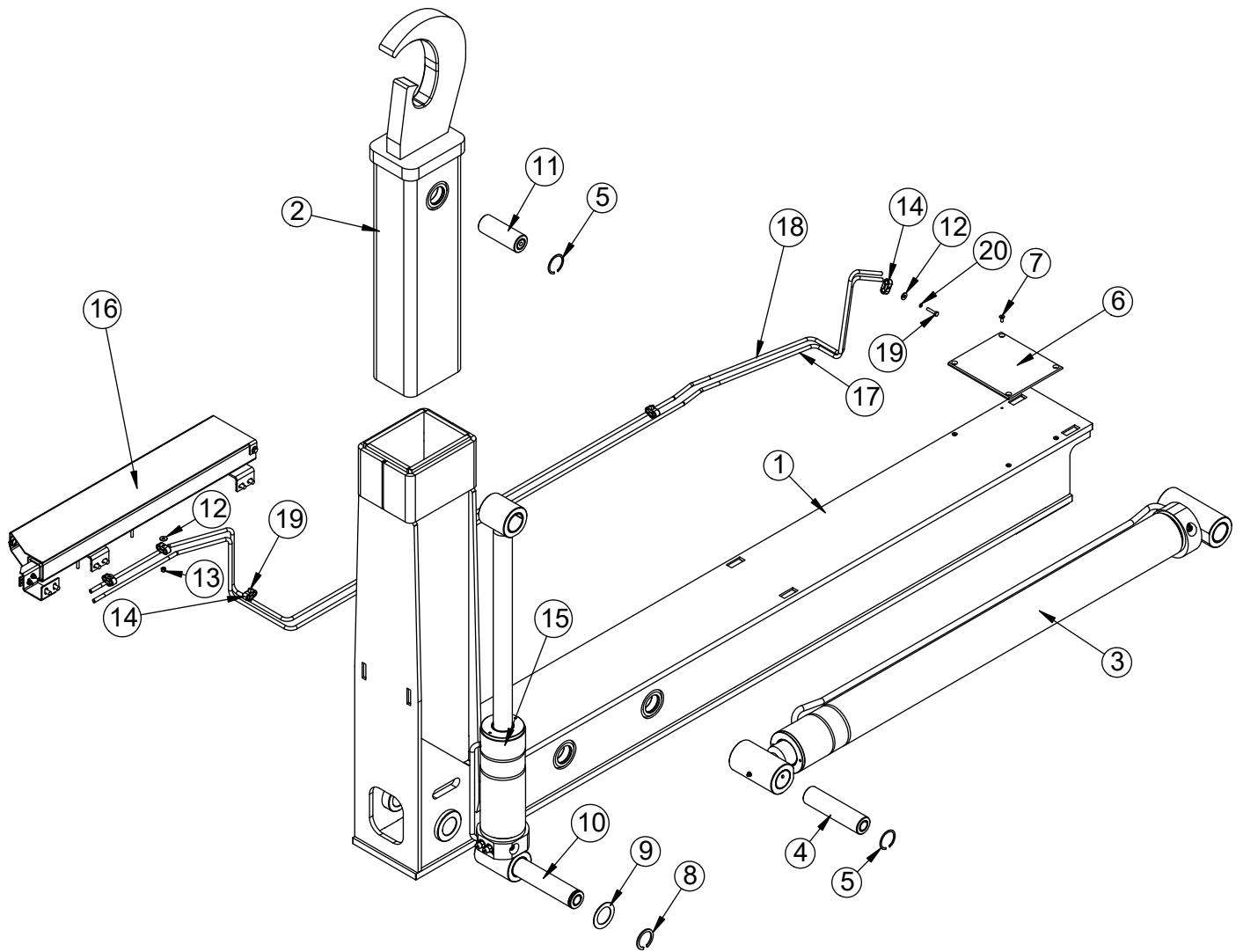
NXT40 Jib Asm 54/62HH, Manual PN 129059 Parts List

PN 129059

ITEM	PART	DESCRIPTION	QTY
1	129060	JIB NXT 52 MANUAL	1
2	129238	JIB TOP NXT52 MANUAL 54/62HH	1
3	129243	WEAR PAD JIB NXT52 0.25IN	2
4	2257	SNAP RING INSIDE 2.00	2
5	25741	CAP SCR 0.25-20X0.63 FSH SS	8
6	10548	CAP SCR 0.50-13X1.50 HHGR8	1
7	45216	PIN 0.31X2.75 WIRE LOCK	2
8	131913CR	PIN 2.00X8.00 D&T ZC	1
9	129241CR	PIN WLDMT 2.00X9.19 ZC	2
10	127968	CYLINDER ASM 4.00X48.00 NXT52	1

REV. A

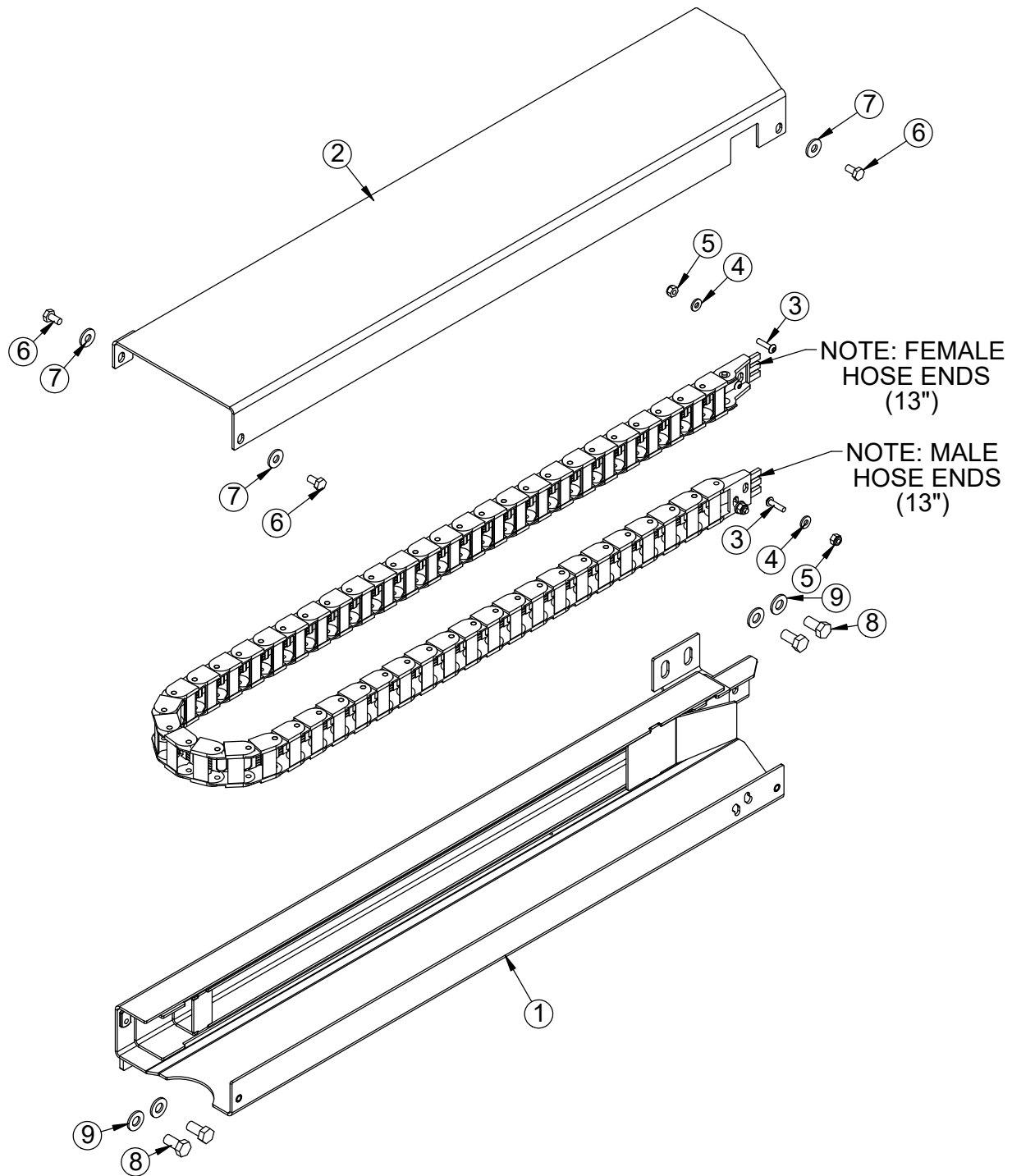
NXT40 Jib Asm 54/62HH, Hydraulic PN 129244



NXT40 Jib Asm 54/62HH, Hydraulic PN 129244

PN 129244			
ITEM	PART	DESCRIPTION	QTY
1	129245	JIB NXT 52 HYD	1
2	129246	JIB TOP NXT52 54/62HH HYD	1
3	127968	CYLINDER ASM 4.00X48.00 NXT52	1
4	131913CR	PIN 2.00X8.00 D&T ZC	1
5	2257	SNAP RING INSIDE 2.00	4
6	129243	WEAR PAD JIB NXT52 0.25IN	2
7	25741	CAP SCR 0.25-20X0.63 FSH SS	8
8	0108	SNAP RING 2.00 7200-200	2
9	0377	MACHY WASHER 2.00ID 14GA	2
10	0862CR	PIN 2.00X10.50	1
11	129349CR	PIN 2.00X5.38 ZC	1
12	0340	WASHER 0.25 USS FLAT	5
13	0333	NUT 0.25-20 HHGR5 NYLOC	2
14	96567	CLAMP 0.38 PORT TUBE TWIN - STAUFF LNGF	5
15	127967	CYLINDER ASM 4.00X7.75 NXT52	1
16	130154	HOSE TRACK ASM NXT52	1
17	130146	TUBE ASM 0.38 JIB HH CS NXT52	1
18	130147	TUBE ASM 0.38 JIB HH SS NXT52	1
19	0437	CAP SCR 0.25-20X1.25 HHGR5	3
20	0521	WASHER 0.25 LOCK	3
REV. B			

NXT40 Hose Track Assembly PN 130154



NXT40 Hose Track Assembly PN 130154 Parts List

PN 130154

ITEM	PART	DESCRIPTION	QTY
1	130155	HOSE TRACK WLDMT NXT52	1
2	130236	PLATE COVER HOSE TRACK NXT52	1
3	D0894	CAP SCR #10-24X0.75 BTNHD SS	4
4	D0178	WASHER #10 SAE FLAT	4
5	C4956	NUT #10-24 HH NYLOC SS	4
6	0478	CAP SCR 0.25-20X0.50 HHGR5	3
7	0340	WASHER 0.25 USS FLAT	3
8	9843	CAP SCR 0.38-16X0.75 HHGR8	6
9	C6353	WASHER 0.38 SAE FLAT YELLOW GR8	6

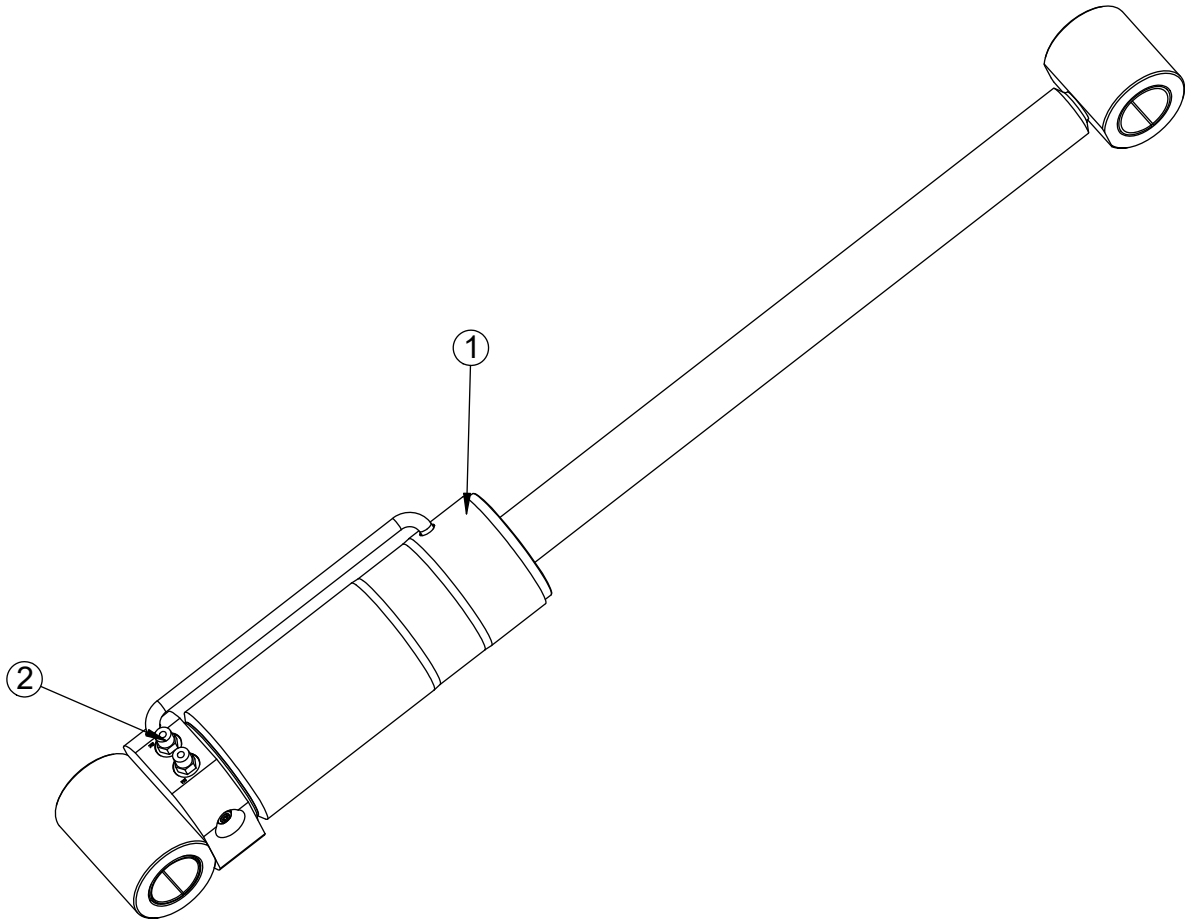
REV. B

NOTES:

HOSE TRACK AND HOSE ASSEMBLY INCLUDED IN HOSE KIT: 132321.

WHEN PLACING HOSES INTO THE HOSE TRACK, LEAVE INDICATED LENGTH OF HOSE BEYOND EACH END.

NXT40 Cylinder Assembly PN 127967



PN 127967

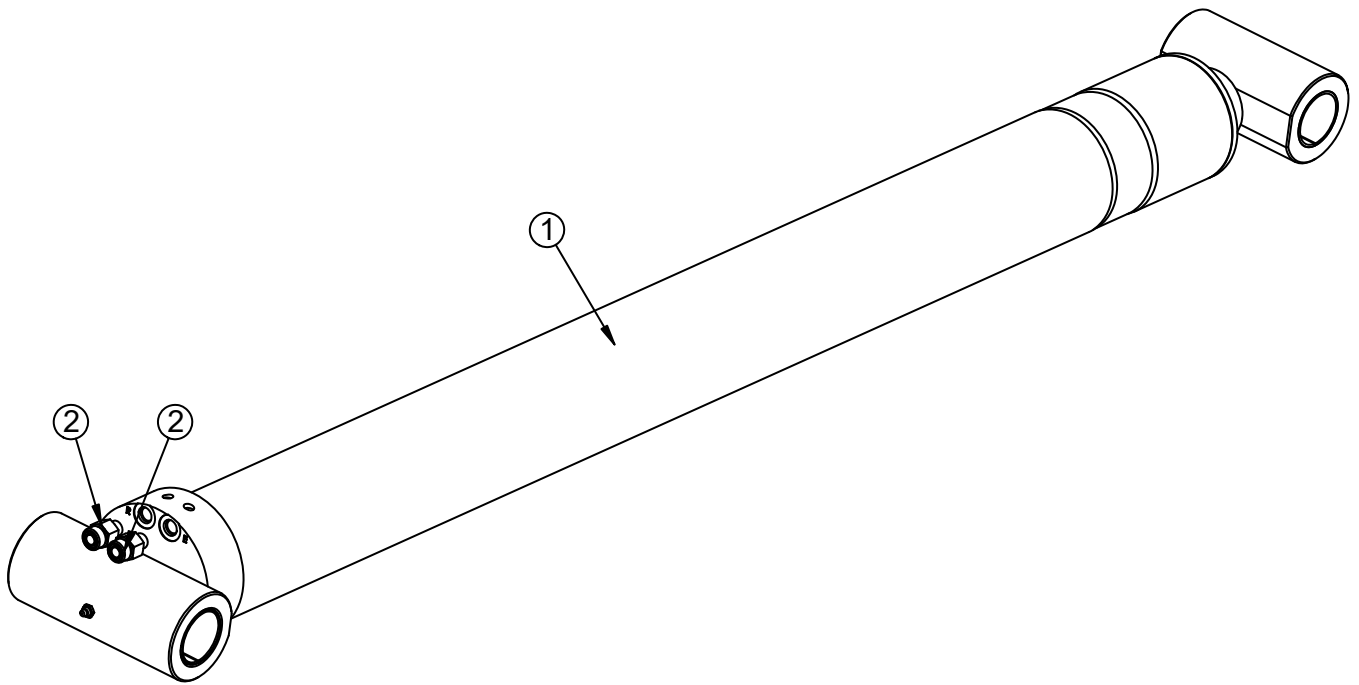
ITEM	PART	DESCRIPTION	QTY
1	127964	CYLINDER 4.00X7.75	1
2	0279	FTG 6-6 MFS-MORB STRAIGHT	2

REV. INITIAL RELEASE

NOTES:
SEAL KIT: 32565

This page left intentionally blank.

NXT40 Cyl Asm 4.00 x 48.00 - PN 127968



NXT40 Cyl Asm 4.00 x 48.00 - PN 127968 Parts List

PN 127968

ITEM	PART	DESCRIPTION	QTY
1	127965	CYLINDER 4.00X48.00 NXT52	1
2	D1290	FTG 8-6 MFS-MORB STRAIGHT	2

INITIAL RELEASE

NOTE:

SEAL KIT PART NO:132901 - BOBALEE.

C-BALANCE VALVE PART NO: C6184 (X2)

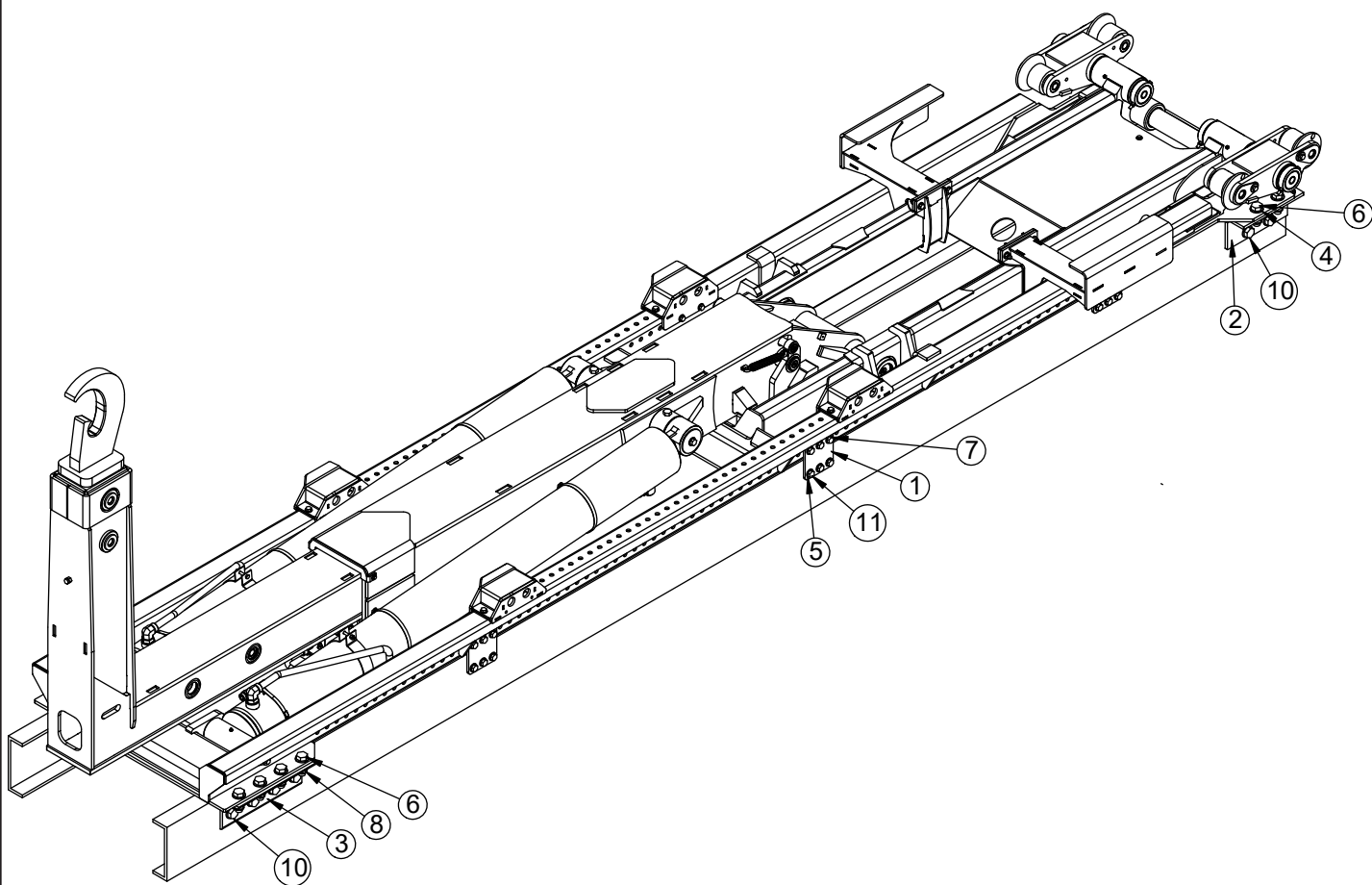
This page left intentionally blank.

Chapter 3 - Auxillary Assemblies NXT52

Chapter Contents

Mounting Kit - PN 129440	26
Mounting Kit - PN 129440 Parts List	27
Reservoir Assembly - PN 130144	28
Reservoir Assembly - PN 130144 Parts List	29
Valve Bank - PN 135329	30
Valve Bank - PN 135329 Parts List	31
Valve Bank - PN 25940	32
3-Section Valve Bank Assembly- PN 135330	34
3-Section Valve Bank Assembly- PN 135330 Parts List	35
3-Sect Valve Bank Asm w Port Relief - PN 47562	36
Hose Kit - PN 129649	38
3-Section Hose Kit - PN 132321	39
Controller Asm, 2-Sect w/VB Asm PN 135331	40
Controller Asm, 2-Sect w/VB Asm PN 135331 Parts List	41
Controller Asm, 3-Sect w VB Asm PN 135332	42
Controller Asm, 3-Sect w VB Asm PN 135332 Parts List	43
Air Schematic Control Tower Asm PN 132688	44
Air Schematic Control Tower Asm PN 132688 Parts List	45
Electrical Schematic PN 132702	46
Face Seal / O-Ring Size Chart	48
Torque Data Chart	49
Torquing Information & Warnings	49
Raised Hoist Indicator Light Kit - PN 127153	50
Raised Hoist Indicator Light Kit - PN 127153 Parts List	51

Mounting Kit - PN 129440



Mounting Kit - PN 129440 Parts List

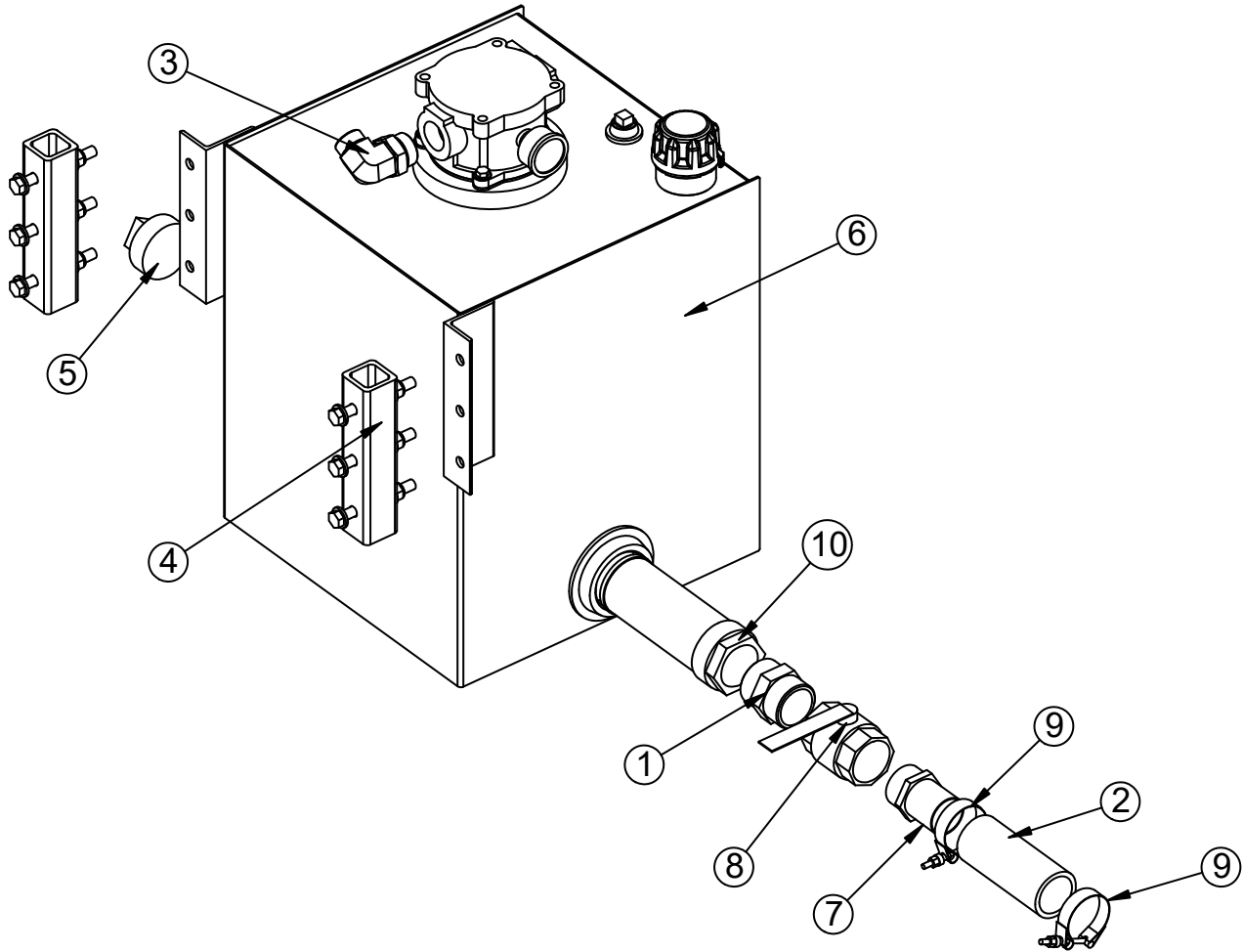
PN 129440

ITEM	PART	DESCRIPTION	QTY
1	129435	PLATE 0.50X6.25X6.00 HOLES	6
2	132326	ANGLE FORMED 4.00X6.00X0.50X12.88 SLOTS	2
3	129502	ANGLE 4.00X6.00X.50WX17.00 SLOTS	2
4	6538	WASHER 1.00 SAE FLAT YELLOW GR8	48
5	C5902	WASHER 0.63 SAE FLAT YELLOW GR8	72
6	5199	CAP SCR 1.00-8X3.00 HHGR8	12
7	84053	CAP SCR 0.63-11X2.25 HHGR8	18
8	6294	NUT 1.00-8 HHGR8 NYLOC	24
9	24868	NUT 0.63-11 HHGR8 NYLOC	36
10	12169	CAP SCR 1.00-8X3.50 HHGR8	12
11	50375	CAP SCR 0.63-11X2.75 HHGR8	18
REV. B			

ITEMS NOT SHOWN

PART	DESCRIPTION	QTY
130468	PLATE 0.25X2.00X6.00 HOLES	6
130469	PLATE 12GAX2.00X6.00 HOLES	6

Reservoir Assembly - PN 130144



Reservoir Assembly - PN 130144 Parts List

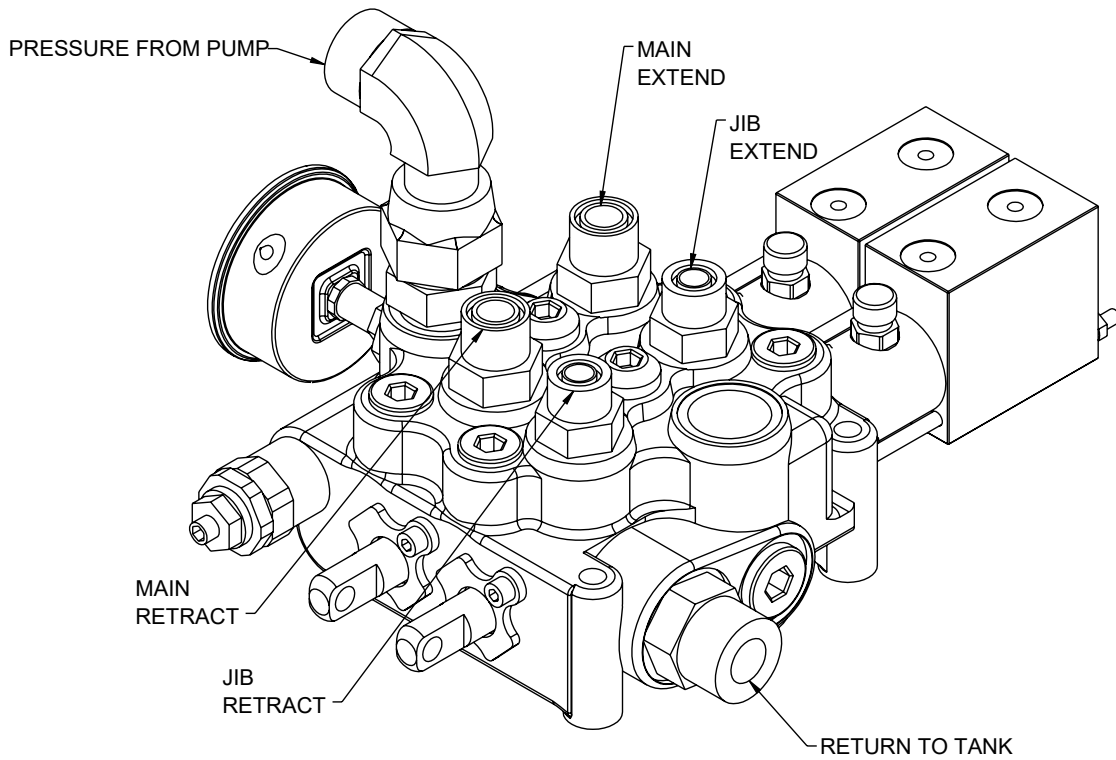
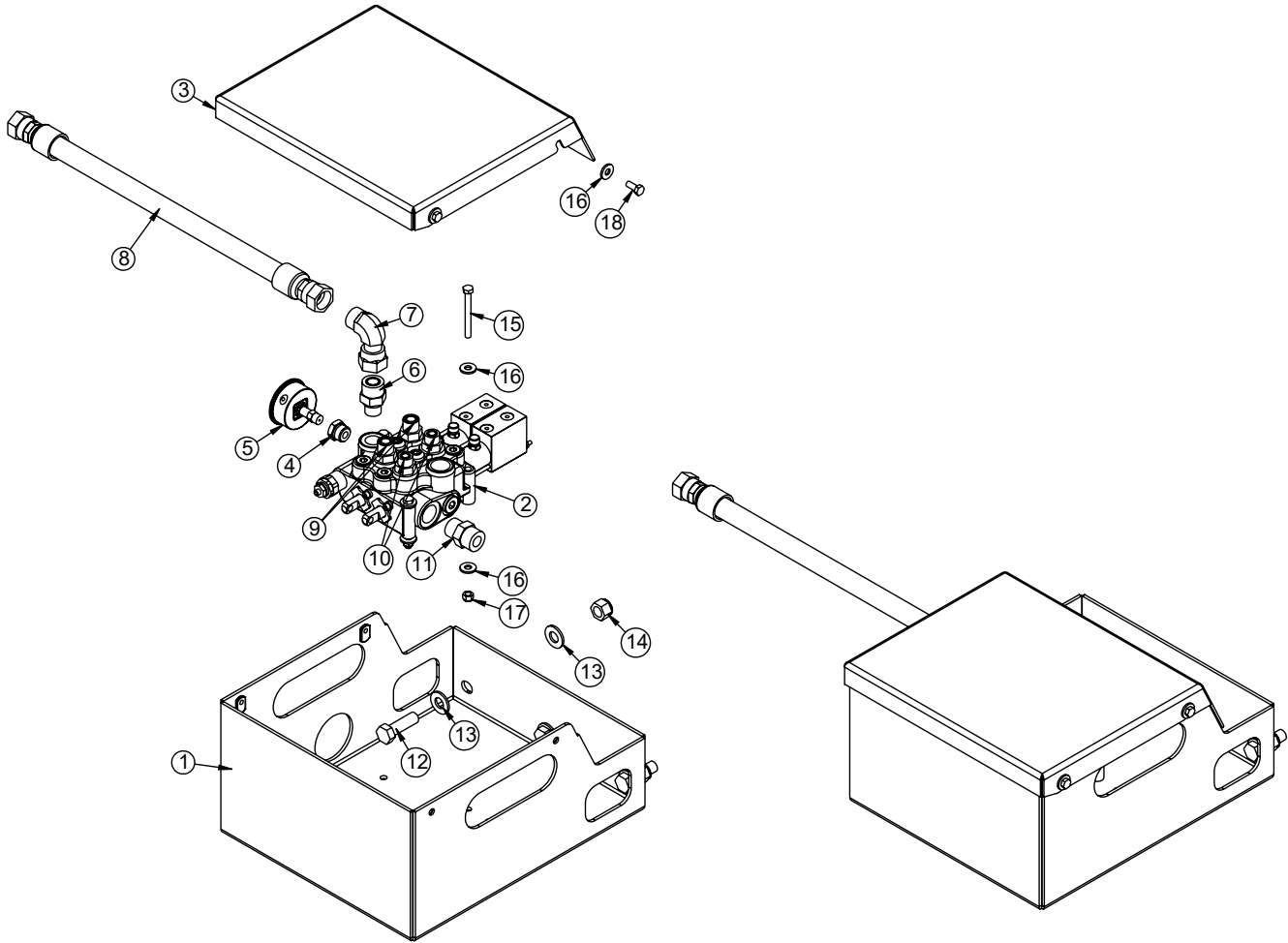
PN 130144

ITEM	PART	DESCRIPTION	QTY
1	7353	FTG 32-32 MP-MP HEX NIPPLE STRAIGHT	1
2	17766	HOSE SUCT 2.00 10FT	1
3	60395	FTG 16-20 MFS-MAORB 90	1
4	83959	MNT KIT RSRVR 25G	1
5	5745	PLUG 3.00 NPT SQ HD CS BLK	1
6	130143	RSRVR ASM 25GAL SQUARE W/ TANK TOP FILTER	1
7	C4730	FTG 32-32 MP-HB STRAIGHT	1
8	C4750	VALVE BALL 2.00	1
9	C4819	HOSE CLAMP 2.00	2
10	C6327	FILTER STRAINER 35GAL TF-2030	1
INITIAL RELEASE			

ITEMS NOT SHOWN

PART	DESCRIPTION	QTY
129652	HOSE 0.75 (300PSI) - 16FFSS SHORT-12FFSS 90 SHORT-48.00CL	
42971	DECAL OIL FILTER CHANGE X 1	1

Valve Bank - PN 135329



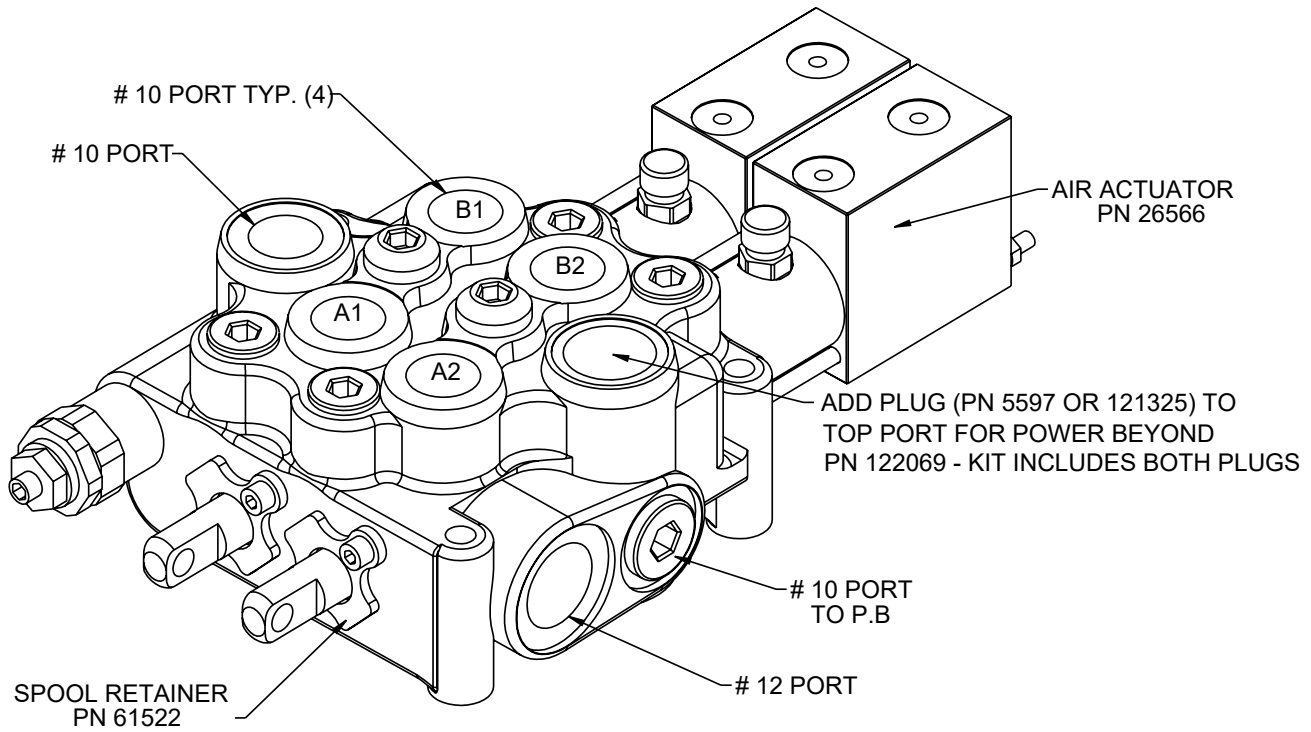
Valve Bank - PN 135329 Parts List

PN 129905

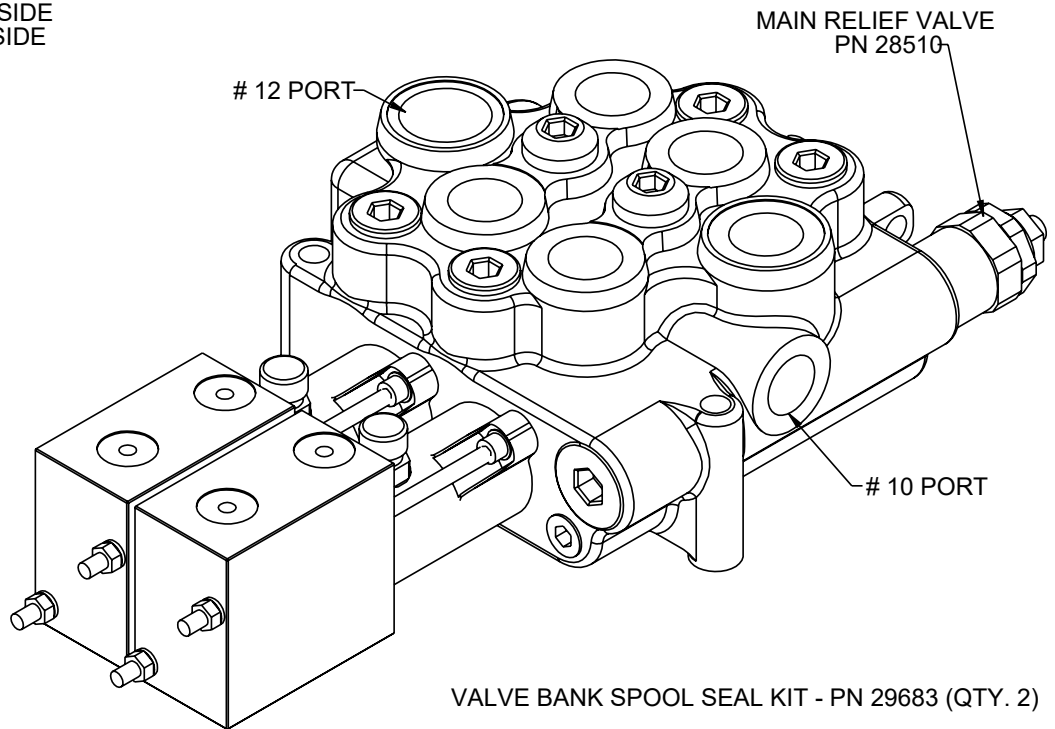
ITEM	PART	DESCRIPTION	QTY
1	129906	WLDMT VB MNT NXT	1
2	25940	VB 2-SECT VDM8 PAC4-PAC4-4200MRV-(1-A-B-2000-2-A-B-2500)-WLCHA-ZNCT	1
3	129908	COVER VB MNT NXT52	1
4	55833	FTG 10-4 MORB-FORB STRAIGHT REDUCER	1
5	39780	GAUGE OIL LF 2.5 0-6000 CBM SAE	1
6	D1435	FTG 12-10 MFS-MORB STRAIGHT	1
7	C4903	FTG 12-12 MFS-FFSS 90	1
8	27119	HOSE 0.75(5000PSI)-12FFSS SHORT-12FFSS SHORT-120CL	1
9	16152	FTG 10-10 MFS-MORB STRAIGHT	2
10	C2252	FTG 8-10 MFS-MORB STRAIGHT	2
11	C2142	FTG 12-12 MFS-MORB STRAIGHT	1
12	C1025	CAP SCR 0.63-11X2.00 HHGR8	3
13	C5902	WASHER 0.63 SAE FLAT YELLOW GR8	6
14	24868	NUT 0.63-11 HHGR8 NYLOC	3
15	C0930	CAP SCR 0.31-18X3.00 HHGR5	3
16	0343	WASHER 0.31 USS FLAT	10
17	0342	NUT 0.31-18 HHGR5 NYLOC	3
18	0420	CAP SCR 0.31-18X0.75 HHGR5	4

REV. INITIAL RELEASE

Valve Bank - PN 25940

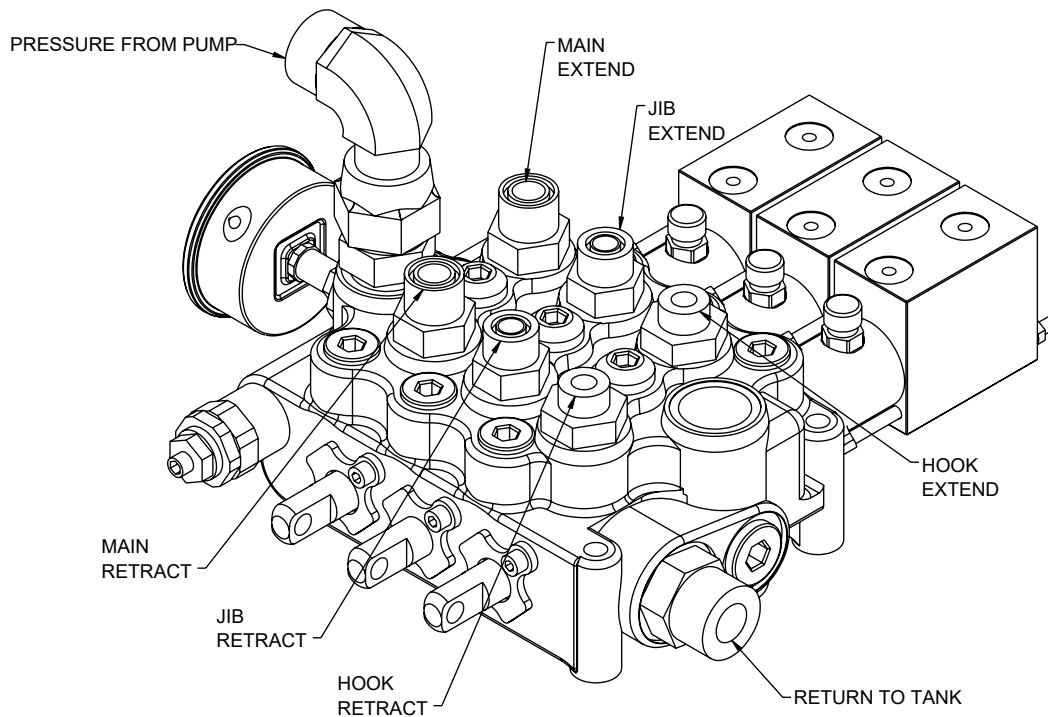
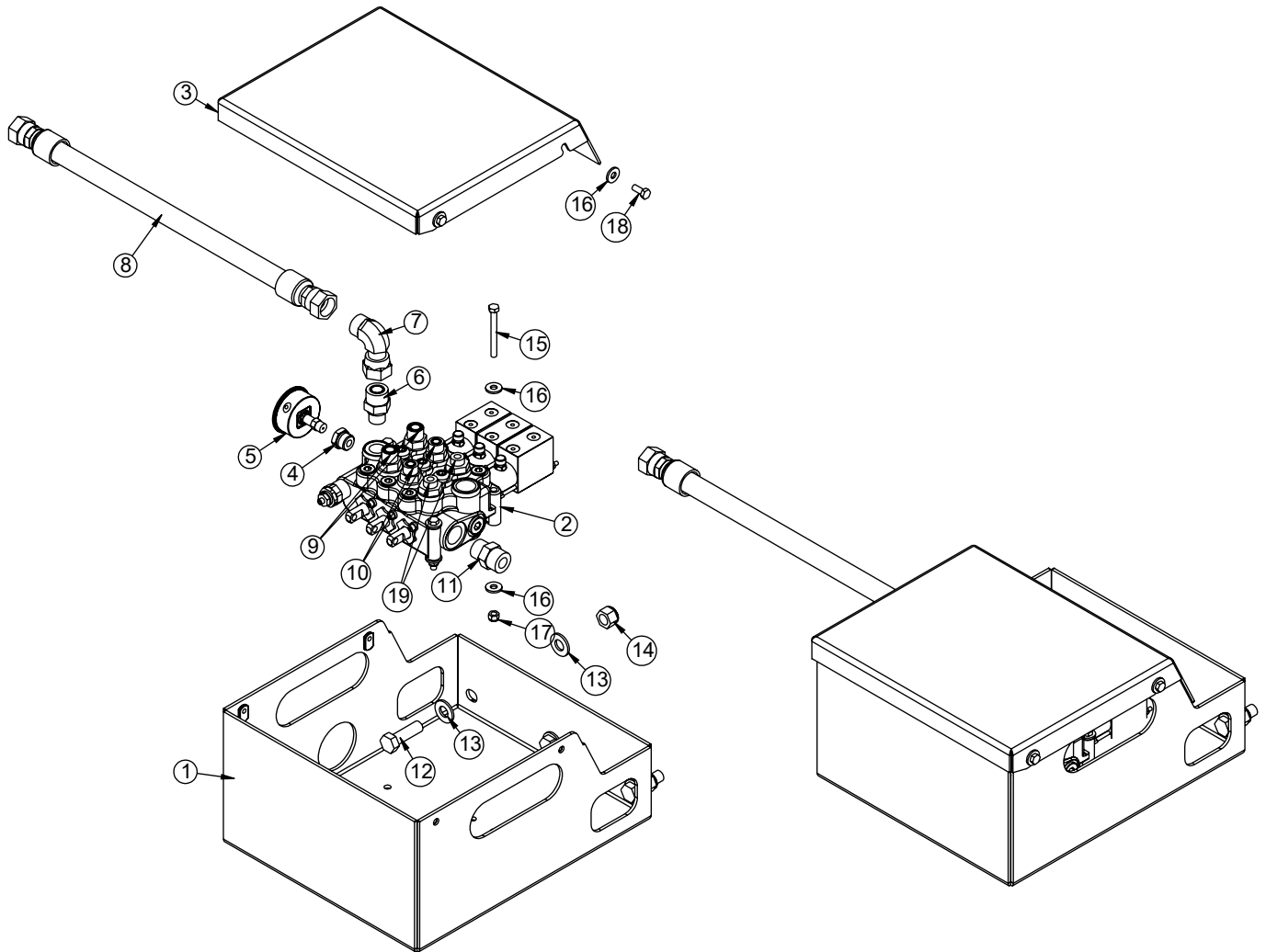


- PUSHING SPOOL ACT. A SIDE
- PULLING SPOOL ACT. B SIDE



This page left intentionally blank.

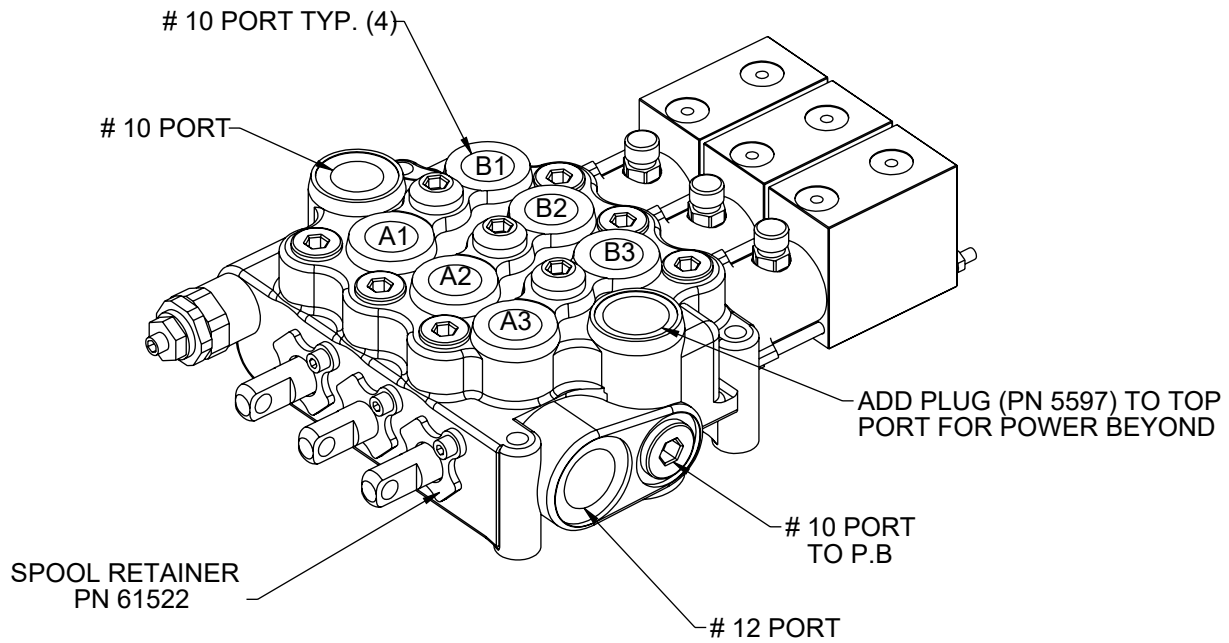
3-Section Valve Bank Assembly- PN 135330



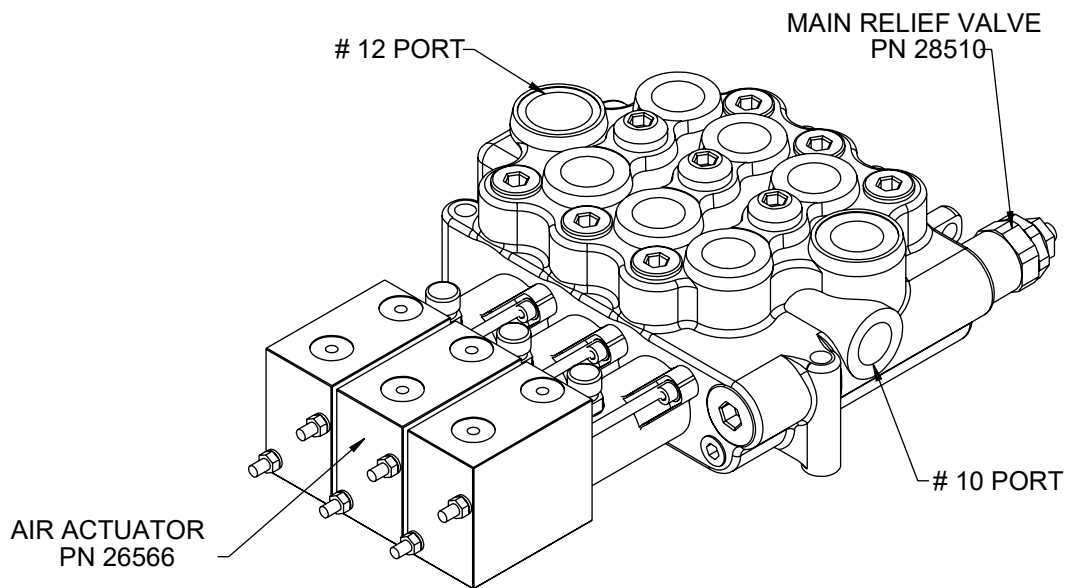
3-Section Valve Bank Assembly- PN 135330 Parts List

PN 132329			
ITEM	PART	DESCRIPTION	QTY
1	129906	WLDMT VB MNT NXT52	1
2	47562	VB 3-SECT VDM8 C4-C4-C4-3400MRV-WCHAYE-BLK	1
3	129908	COVER VB MNT NXT52	1
4	55833	FTG 10-4 MORB-FORB STRAIGHT REDUCER	1
5	39780	GAUGE OIL LF 2.5 0-6000 CBM SAE	1
6	D1435	FTG 12-10 MFS-MORB STRAIGHT	1
7	C4903	FTG 12-12 MFS-FFSS 90	1
8	27119	HOSE 0.75(5000PSI)-12FFSS SHORT-12FFSS SHORT-120CL	1
9	16152	FTG 10-10 MFS-MORB STRAIGHT	2
10	C2252	FTG 8-10 MFS-MORB STRAIGHT	2
11	C2142	FTG 12-12 MFS-MORB STRAIGHT	1
12	C1025	CAP SCR 0.63-11X2.00 HHGR8	3
13	C5902	WASHER 0.63 SAE FLAT YELLOW GR8	6
14	24868	NUT 0.63-11 HHGR8 NYLOC	3
15	C0930	CAP SCR 0.31-18X3.00 HHGR5	3
16	0343	WASHER 0.31 USS FLAT	10
17	0342	NUT 0.31-18 HHGR5 NYLOC	3
18	0420	CAP SCR 0.31-18X0.75 HHGR5	4
19	C1855	FTG 6-10 MFS-MORB STRAIGHT	2
REV. INITIAL RELEASE			

3-Sect Valve Bank Asm w Port Relief - PN 47562



- PUSHING SPOOL ACT. A SIDE
- PULLING SPOOL ACT. B SIDE

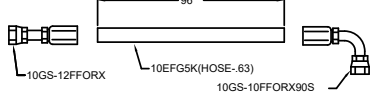


VALVE BANK SPOOL SEAL KIT - PN 29683 (QTY. 3)

This page left intentionally blank.

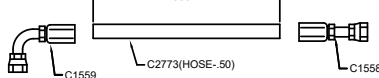
Hose Kit - PN 129649

STELLAR #70410 -0.63(4500PSI)-12FFSS-10FFSS 90 SHORT-96CL
QTY - 2

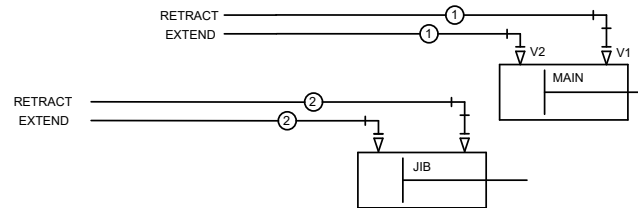
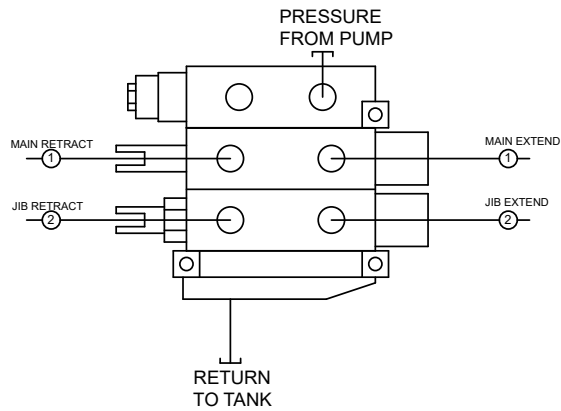


FUNCTION: MAIN CYL. TO VALVE BANK (MAIN EXTEND/RETRACT)

STELLAR #41121 -0.50(4500PSI)-8FFSS-8FFSS 90 SHORT-360CL
QTY - 2



FUNCTION: VALVE BANK (JIB EXTEND/RETRACT) TO JIB CYL



NOTE: SYSTEM PRESSURE IS 4500 P.S.I.

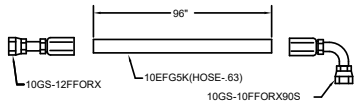
PN 129649

ITEM	PART	DESCRIPTION	QTY
01	70410	HOSE 0.63(4500PSI)-12FFSS-10FFSS 90 SHORT-96CL	2
02	41121	HOSE 0.50(4500PSI)-8FFSS-8FFSS 90 SHORT-360CL	2

REV. A

3-Section Hose Kit - PN 132321

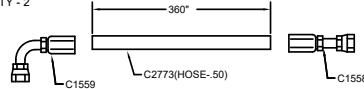
STELLAR #70410 -0.63(4500PSI)-12FFSS-10FFSS 90 SHORT-96CL
QTY - 2



FUNCTION: MAIN CYL. TO VALVE BANK (MAIN EXTEND/RETRACT)

①

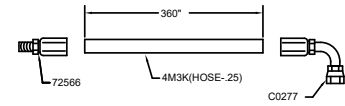
STELLAR #41121 -0.50(4500PSI)-8FFSS-8FFSS 90 SHORT-360CL
QTY - 2



FUNCTION: VALVE BANK (JIB EXTEND/RETRACT) TO JIB CYL

②

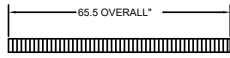
STELLAR #132322 -0.25(3000PSI)-6MFS-6FFSS 90 SHORT-360CL
QTY - 2



FUNCTION: HOOK PORT TUBE TO VALVE BANK (HOOK EXTEND/RETRACT)

③

STELLAR #130159 -HOSE TRACK NXT52
QTY - 1



NOTE: BOTH HOOK HOSES TO STICK OUT 15" FROM EACH END OF HOSE TRACK

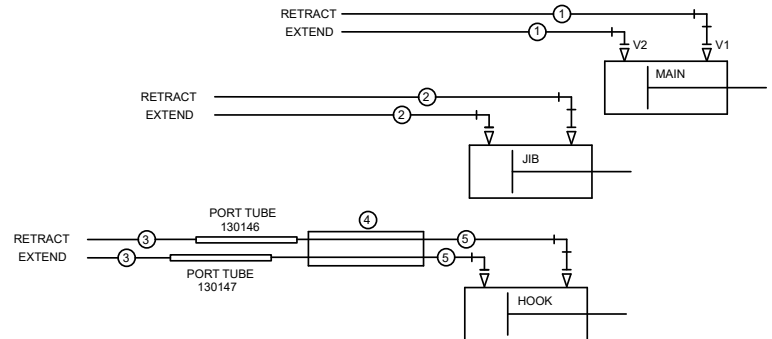
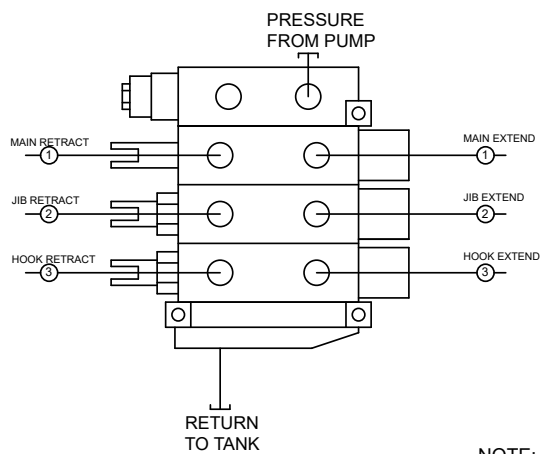
④

STELLAR #132323 -0.25(3000PSI)-6MFS-6FFSS-93CL
QTY - 2



FUNCTION: HOOK CYL. TO PORT TUBE (HOOK EXTEND/RETRACT)

⑤



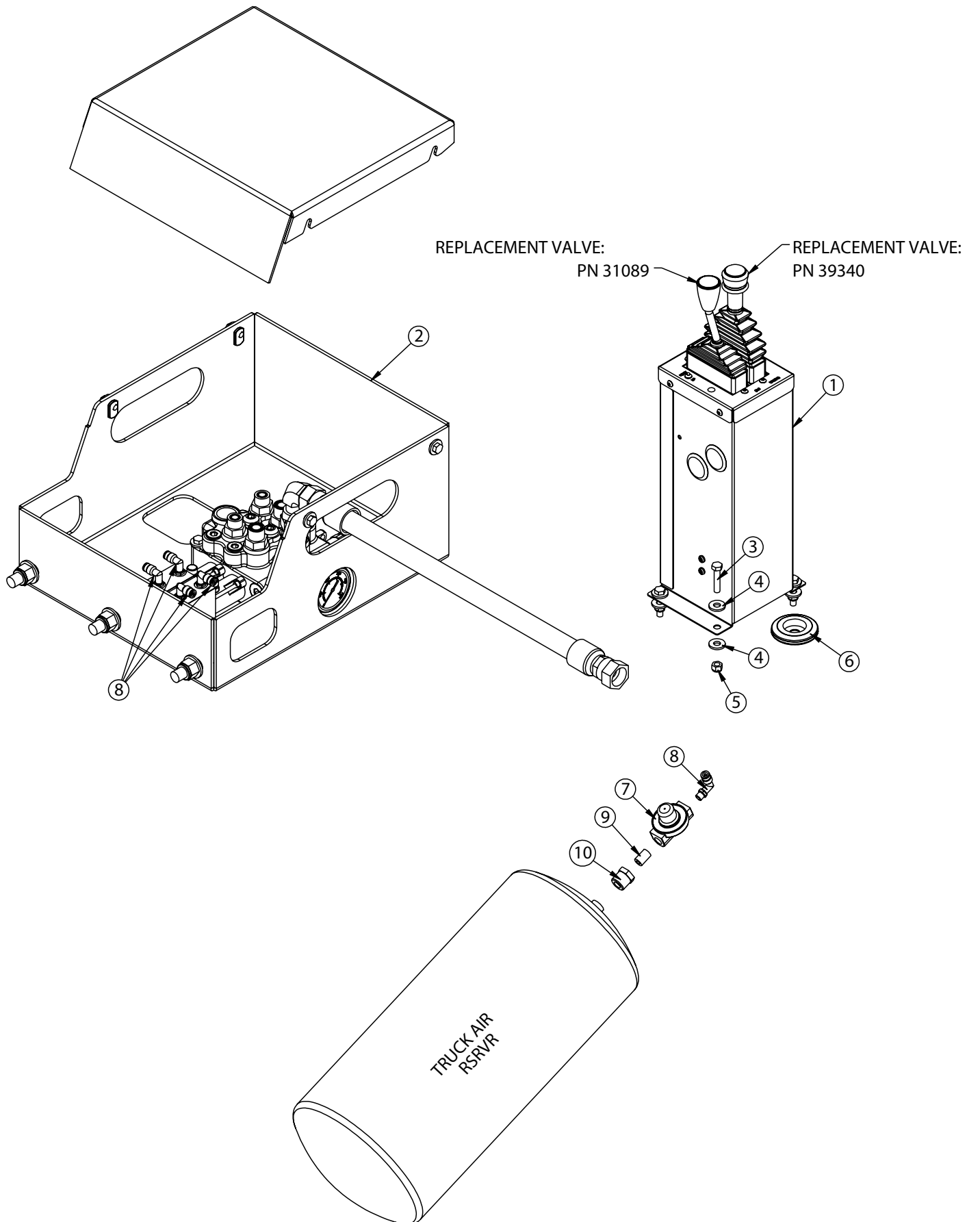
NOTE: SYSTEM PRESSURE IS 4500 P.S.I.

PN 132321

ITEM	PART	DESCRIPTION	QTY
01	70410	HOSE 0.63(4500PSI)-12FFSS-10FFSS 90 SHORT-96CL	2
02	41121	HOSE 0.50(4500PSI)-8FFSS-8FFSS 90 SHORT-360CL	2
03	132322	HOSE 0.25(3000PSI)-6MFS-6FFSS 90 SHORT-360CL	2
04	130159	HOSE TRACK NXT52	1
05	132323	HOSE 0.25(3000PSI)-6MFS-6FFSS-93CL	2

REV. INITIAL RELEASE

Controller Asm, 2-Sect w/VB Asm PN 135331



Controller Asm, 2-Sect w/VB Asm PN 135331 Parts List

PN 135331

ITEM	PART	DESCRIPTION	QTY
1	131279	CONTROLLER ASM AIR 2 SECT NXT52	1
2	135329	VB ASM 2S VDM8 NXT40	1
3	0486	CAP SCR 0.31-18X1.50 HHGR5	4
4	0343	WASHER 0.31 USS FLAT	8
5	0342	NUT 0.31-18 HHGR5 NYLOC	4
6	16948	GROMMET 2.50ODX1.50GDX0.13X0.56ID	1
7	35211	PTO AIR REGULATOR 378414	1
8	45687	FTG 4-2 MP-PTC 90 BRASS 1169X4S	5
9	C5934	FTG 4-4XCLOSE MP-MP NIPPLE STRAIGHT BLK	1
10	C1065	BUSHING 0.50X0.25 BLK	1

REV. INITIAL RELEASE

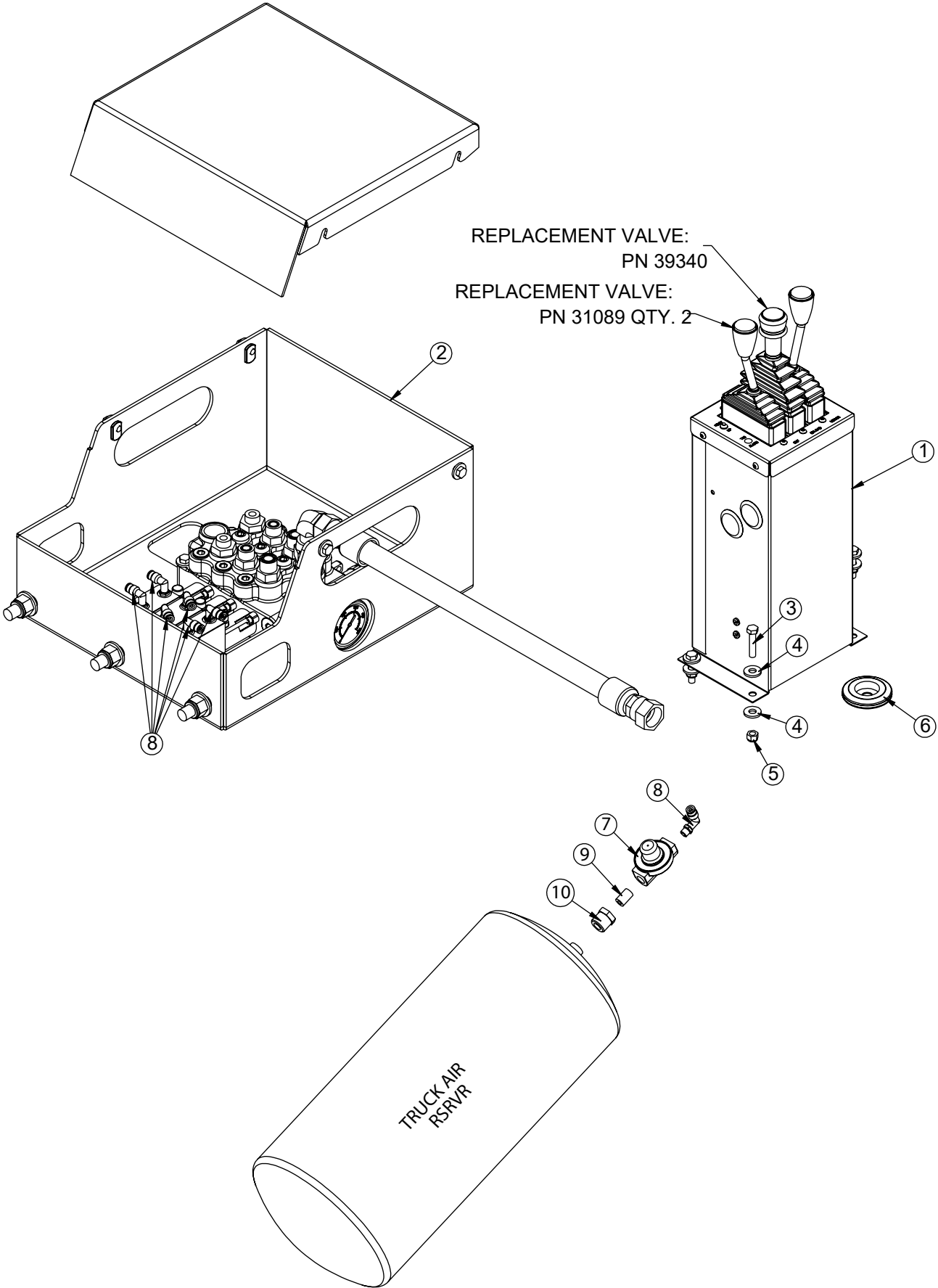
ITEMS NOT SHOWN

PART	DESCRIPTION	QTY
132702	ELECTRICAL KIT AIR NXT 52	
132688	AIR SCHEM CONTROL TOWER ASM NXT52	

NOTES:

ITEMS 3-10 INCLUDED WITH 131279.

Controller Asm, 3-Sect w VB Asm PN 135332



Controller Asm, 3-Sect w VB Asm PN 135332 Parts List

PN 131705

ITEM	PART	DESCRIPTION	QTY
1	131707	CONTROLLER ASM AIR 3 SECT NXT52	1
2	135330	VB ASM 3S VDM8 NXT40	1
3	0486	CAP SCR 0.31-18X1.50 HHGR5	4
4	0343	WASHER 0.31 USS FLAT	8
5	0342	NUT 0.31-18 HHGR5 NYLOC	4
6	16948	GROMMET 2.50ODX1.50GDX0.13X0.56ID	1
7	35211	PTO AIR REGULATOR 378414	1
8	45687	FTG 4-2 MP-PTC 90 BRASS 1169X4S	7
9	C5934	FTG 4-4XCLOSE MP-MP NIPPLE STRAIGHT BLK	1
10	C1065	BUSHING 0.50X0.25 BLK	1

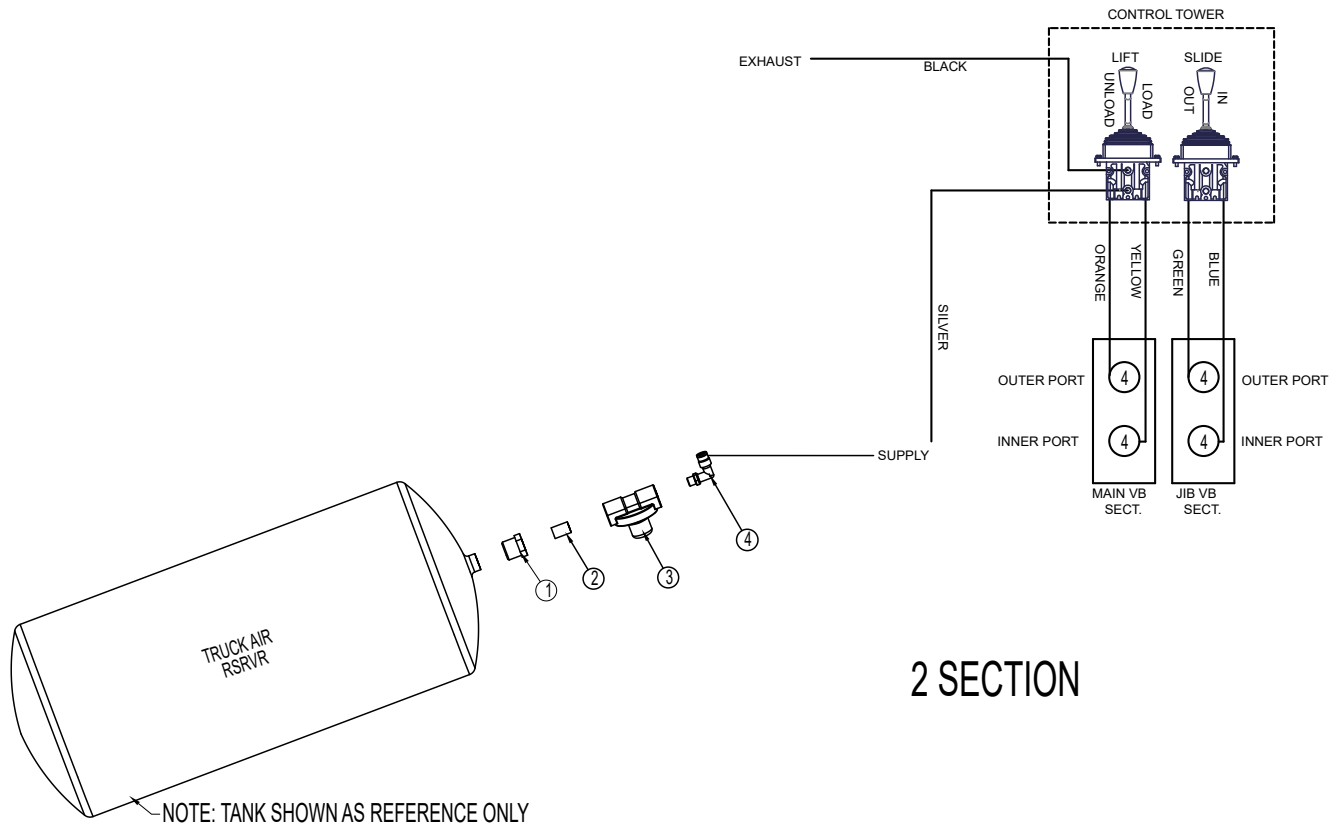
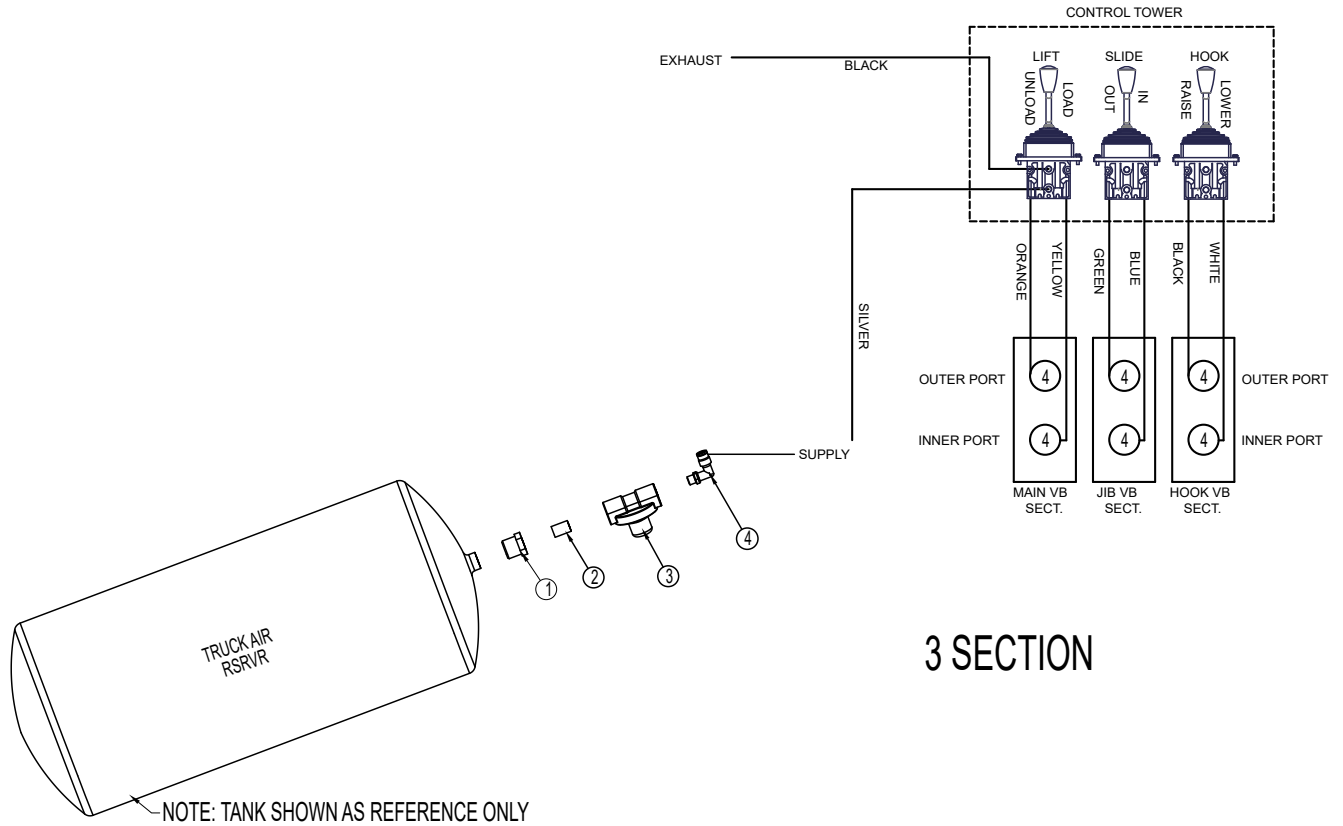
REV. INITIAL RELEASE

ITEMS NOT SHOWN

PART	DESCRIPTION	QTY
132702	ELECTRICAL KIT AIR NXT 52	1
132688	AIR SCHEM CONTROL TOWER ASM NXT52	1

NOTE:
ITEMS 3-10 INCLUDED WITH 131707.

Air Schematic Control Tower Asm PN 132688



Air Schematic Control Tower Asm PN 132688 Parts List

3-SECTION PN 132688

ITEM	PART	DESCRIPTION	QTY
1	C1065	BUSHING 0.50X0.25 BLK	1
2	C5934	FTG 4-4XCLOSE MP-MP NIPPLE STRAIGHT BLK	1
3	35211	PTO AIR REGULATOR 378414	1
4	45687	FTG 4-2 MP-PTC 90 BRASS 1169X4S1	7

TUBING COLOR CODE

COLOR	APPLICATION
SILVER	SUPPLY
BLACK	EXHAUST
GREEN	SLIDE OUT
BLUE	SLIDE IN
ORANGE	LIFT UNLOAD
YELLOW	LIFT LOAD
WHITE	HOOK LOWER
BLACK	HOOK RAISE

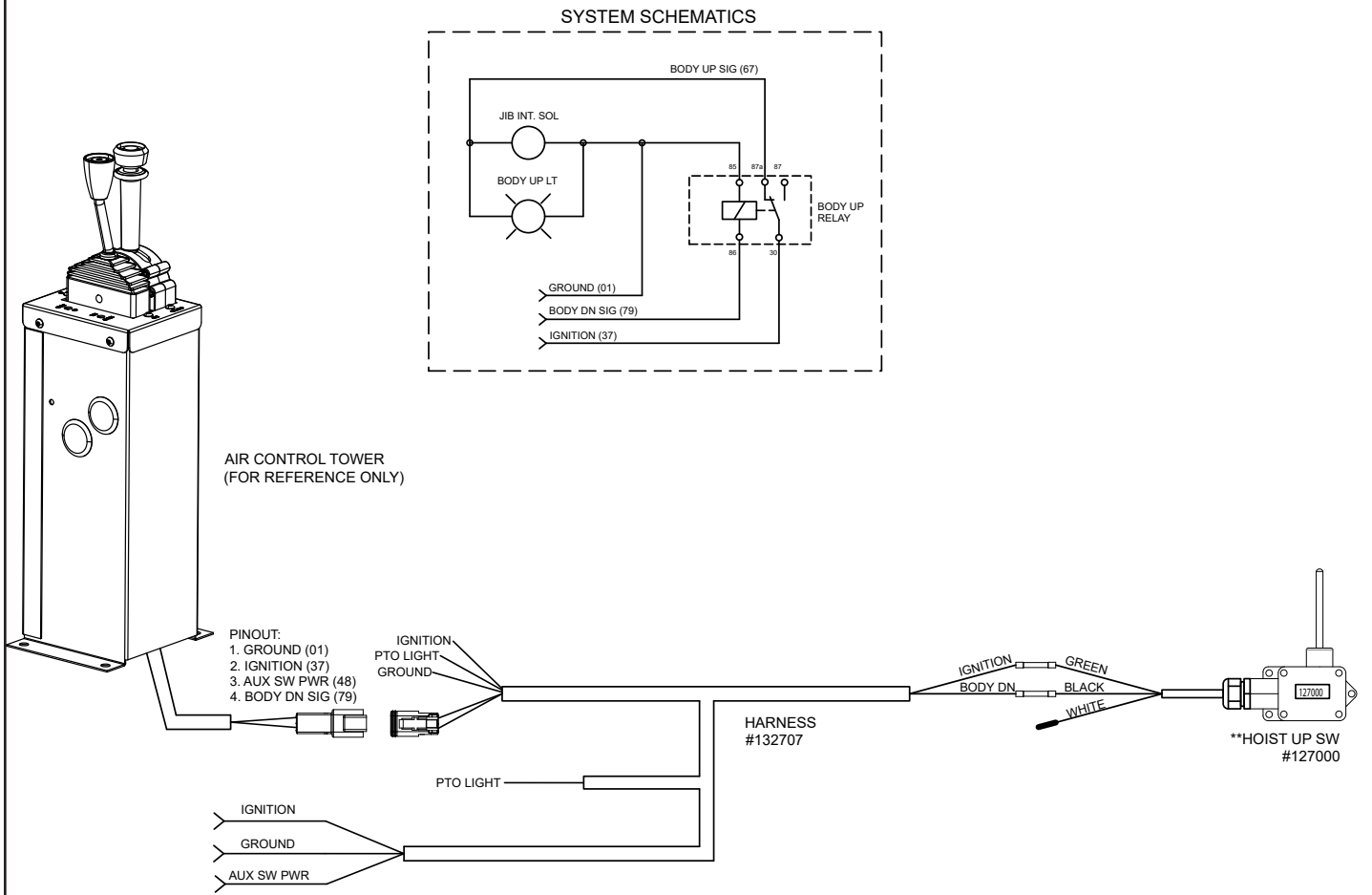
2-SECTION PN 132688

ITEM	PART	DESCRIPTION	QTY
1	C1065	BUSHING 0.50X0.25 BLK	1
2	C5934	FTG 4-4XCLOSE MP-MP NIPPLE STRAIGHT BLK	1
3	35211	PTO AIR REGULATOR 378414	1
4	45687	FTG 4-2 MP-PTC 90 BRASS 1169X4S1	7

TUBING COLOR CODE

COLOR	APPLICATION
SILVER	SUPPLY
BLACK	EXHAUST
GREEN	SLIDE OUT
BLUE	SLIDE IN
ORANGE	LIFT UNLOAD
YELLOW	LIFT LOAD

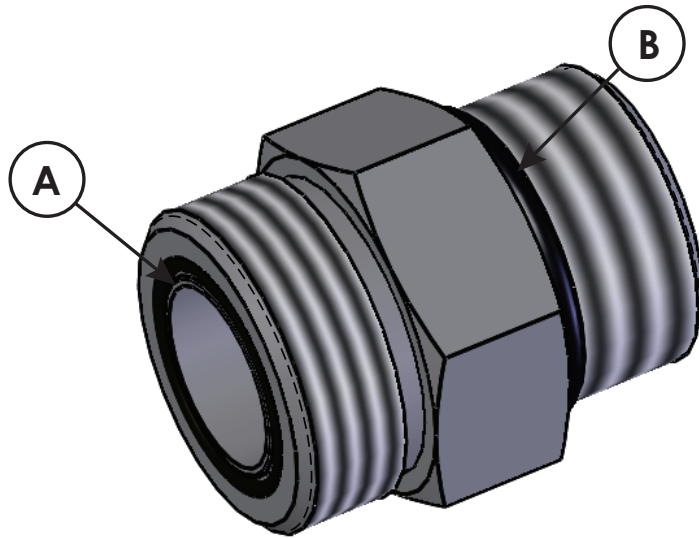
Electrical Schematic PN 132702



PN 132702		
PART	DESCRIPTION	QTY
132707	WIRE HRNS CHASSIS EXT NXT 52	1
127153	KIT RAISED HOIST INDICATOR LIGHT NXT	1
C0073	TERML BUTT 16-14GA HS BLUE	3
REV. B R880		

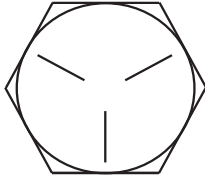
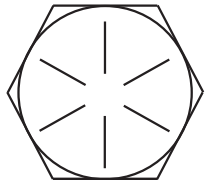
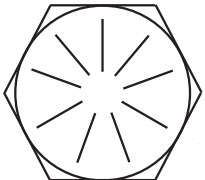
This page left intentionally blank.

Face Seal / O-Ring Size Chart



HOSE SIZE	FITTING SIZE	FACE SEAL (A) STELLAR PART NUMBER	O-RING BOSS (B) STELLAR PART NUMBER
1/4"	#4	C2027	D1245
3/8"	#6	C2028	D1246
1/2"	#8	C2029	D1247
5/8"	#10	32223	D1248
3/4"	#12	D1244	D1249
1"	#16		D1250

Torque Data Chart

		GRADE 5		GRADE 8		GRADE 9
						
SIZE (DIA - TPI)	BOLT DIA (INCHES)	PLAIN (FT-LB)	PLATED (FT-LB)	PLAIN (FT-LB)	PLATED (FT-LB)	PLATED (FT-LB)
5/16-18	0.3125	17	13	25	18	22
3/8-16	0.3750	31	23	44	33	39
7/16-14	0.4375	49	37	70	52	63
1/2-13	0.5000	75	57	105	80	96
9/16-12	0.5625	110	82	155	115	139
5/8-11	0.6250	150	115	220	160	192
3/4-10	0.7500	265	200	375	280	340
7/8-9	0.8750	395	295	605	455	549
1-8	1.000	590	445	910	680	823
1 1/8-7	1.1250	795	595	1290	965	1167
1 1/4-7	1.2500	1120	840	1815	1360	1646
1 3/8-6	1.3750	1470	1100	2380	1780	2158
1 1/2-6	1.500	1950	1460	3160	2370	2865

Torquing Information & Warnings

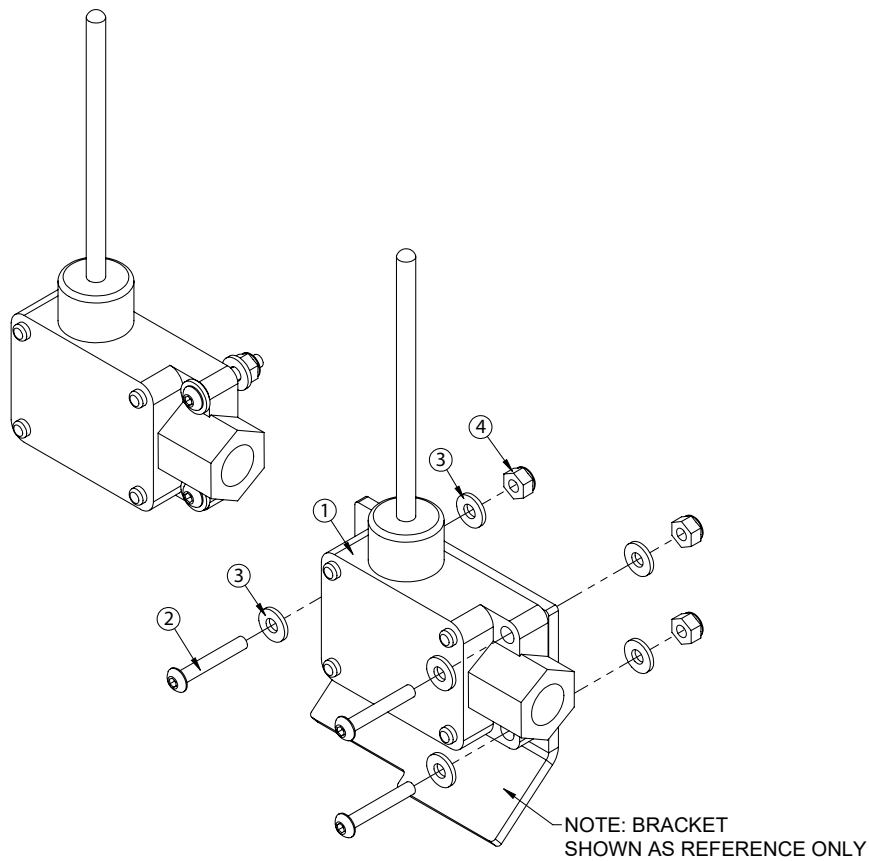
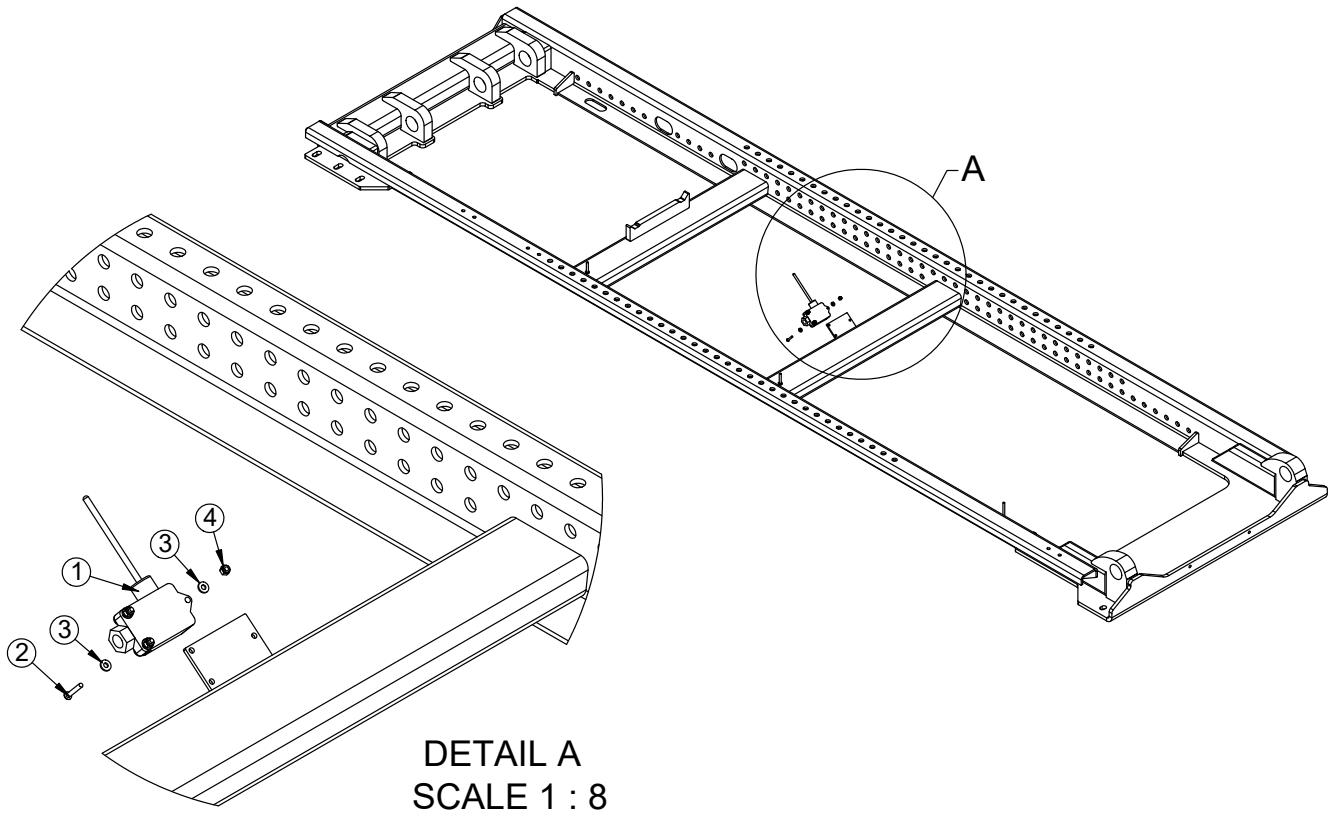
⚠ WARNING When using the torque data in the chart, the following rules should be observed:

- **Bolt manufacturer's** particular specifications should be consulted when provided.
- **Flat washers** of equal strength must be used.
- **All torque measurements** are given in foot-pounds. To convert to inch-pounds, multiply by 12.
- **Torque values** specified are for bolts with residual oils or no special lubricants* applied. If special lubricants of high stress ability, such as Never-Seez compound graphite and oil, molybdenum disulphite, colloidal copper or white lead are applied, multiply the torque values in the charts by the factor .90. The use of Loctite does not affect the torque values listed above.
- **Torque values** for socket-head capscrews are the same as for Grade 8 capscrews.
- **Do not use these values** if a different torque value or tightening procedure is given for a specific application. Torque values listed are for general use only. Check tightness of fasteners periodically.
- **Shear bolts** are designed to fail under predetermined loads. Always replace shear bolts with identical grade.
- **Fasteners** should be replaced with the same or higher grade. If higher grade fasteners are used, these should only be tightened to the strength of the original.
- **Tighten** plastic insert or crimped steel-type lock nuts to approximately 110 percent of the dry torque values shown in the chart on page 8, applied to the nut, not to the bolt head. Tighten toothed or serrated-type lock nuts to the full torque value.

NOTICE

**Lubricated means coated with a lubricant such as engine oil, or fasteners with phosphate and oil coatings. "Dry" means plain or zinc plated without lubrication. Tighten lubricated bolts to approximately 80% of dry bolts.*

Raised Hoist Indicator Light Kit - PN 127153



Raised Hoist Indicator Light Kit - PN 127153 Parts List

PN 127153

ITEM	PART	DESCRIPTION	QTY
1	127000	SWITCH ASM HOIST UP NXT	1
2	30472	CAP SCR #10-24X1.25 BTNHD SS	3
3	D0178	WASHER #10 SAE FLAT	6
4	26034	NUT #10-24 HH NYLOC	3
INITIAL RELEASE			

NOTES:

SEE CONTROLLER ASM FOR WIRING.

FOR REFERENCE:

- GREEN TO IGNITION
- BLACK TO BODY DN
- WHITE TO BODY UP

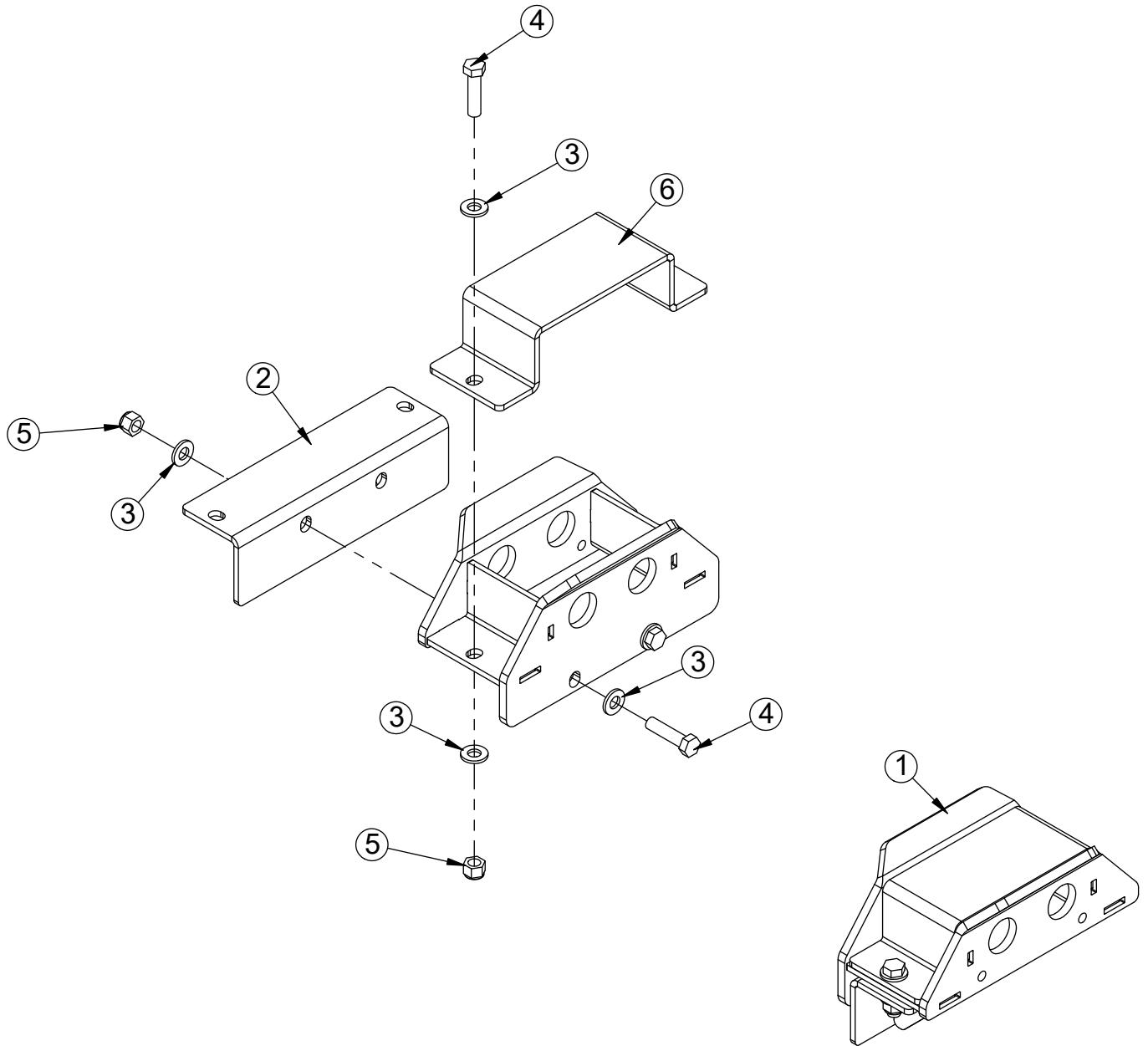
This page left intentionally blank.

Chapter 4 - Accessory Drawings

CHAPTER CONTENTS

Saddle Asm Skid Plate - PN 129504.....	54
Saddle Asm Skid Plate - PN 129504 Parts List.....	55
Saddle Asm Roller - PN 129373	56
Saddle Asm Roller - PN 129373 Parts List	57
NXT40 Outside Latch Asm Bolt On - PN 129856.....	58
NXT40 Outside Latch Asm Bolt On - 129856 Parts List.....	59
NXT40 Outside Latch Assembly Location - PN 132902.....	60
Skid Drawing 61.75HH - PN 134591.....	61
Skid Drawing 54.00HH - PN 134590.....	62
NXT40 Hooklift Decals - PN 133455.....	63

Saddle Asm Skid Plate - PN 129504

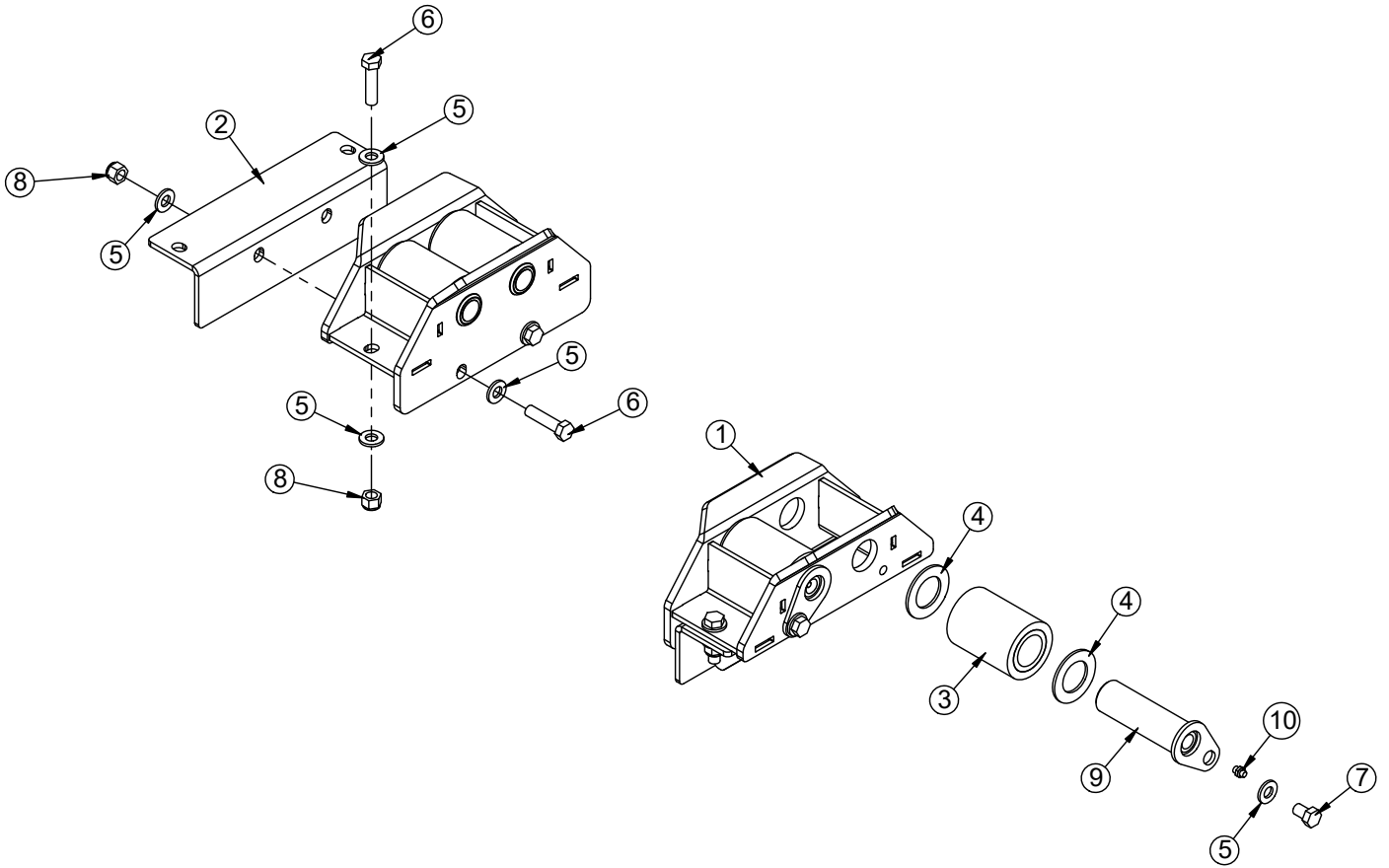


Saddle Asm Skid Plate - PN 129504 Parts List

PN 129504

ITEM	PART	DESCRIPTION	QTY
1	129374	WLDMT SADDLE CARRIAGE NXT52	2
2	129378	WLDMT SADDLE SUPPORT NXT52	2
3	D0790	WASHER 0.50 SAE FLAT YELLOW GR8	16
4	8833	CAP SCR 0.50-13X2.00 HHGR8	8
5	5468	NUT 0.50-13 HHGR8 NYLOC	8
6	129503	FORMED SADDLE WEAR PLATE NXT52	2
INITIAL RELEASE			

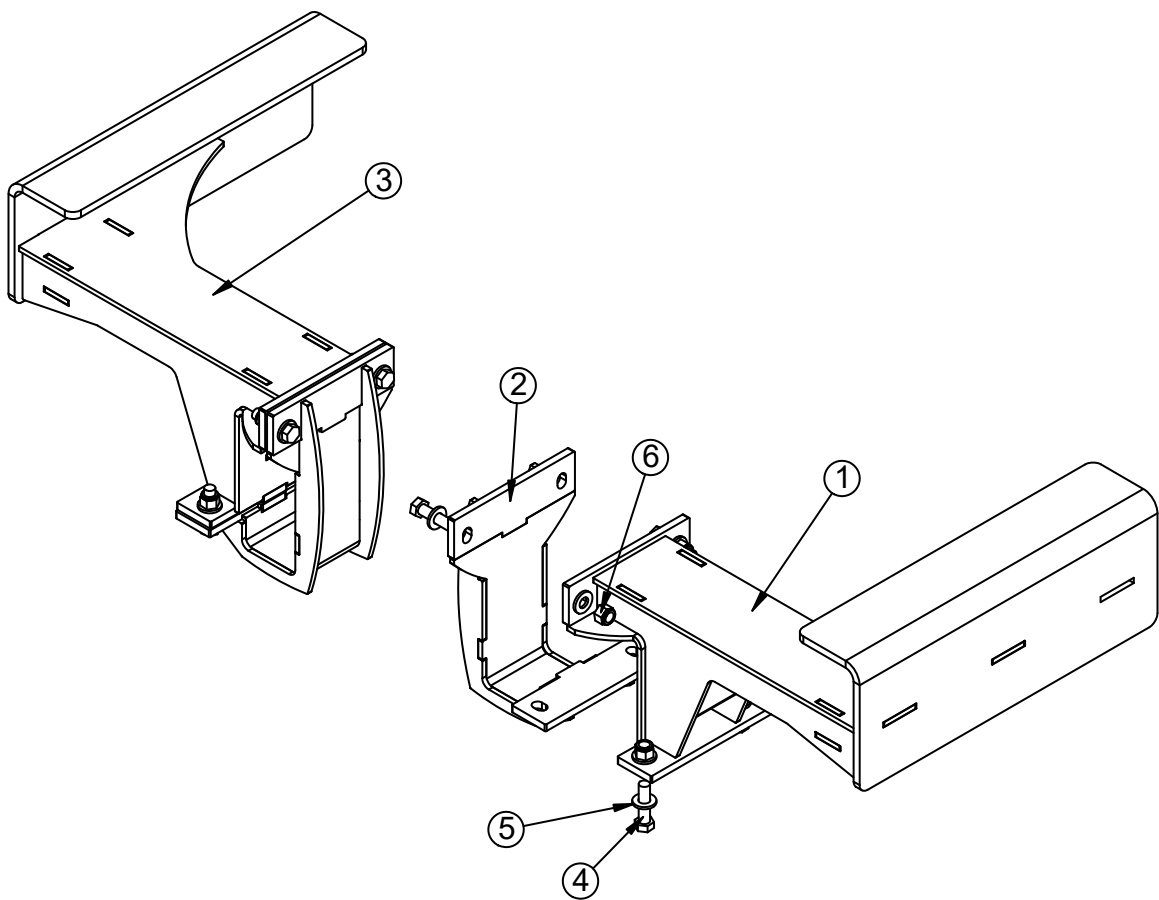
Saddle Asm Roller - PN 129373



Saddle Asm Roller - PN 129373 Parts List

PN 129373			
ITEM	PART	DESCRIPTION	QTY
1	129374	WLDMT SADDLE CARRIAGE NXT52	2
2	129378	WLDMT SADDLE SUPPORT NXT52	2
3	124209	ROLLER ASM 1.50X2.75X3.69	4
4	D0419	THRUST WASHER	8
5	D0790	WASHER 0.50 SAE FLAT YELLOW GR8	20
6	8833	CAP SCR 0.50-13X2.00 HHGR8	8
7	9844	CAP SCR 0.50-13X0.75 HHGR8	4
8	5468	NUT 0.50-13 HHGR8 NYLOC	8
9	123773CR	PIN TEAR DROP 1.50X4.94 W/ZERK ZC	4
10	C1592	ZERK 1/8 NPT STRAIGHT	4
INITIAL RELEASE			

NXT40 Outside Latch Asm Bolt On - PN 129856



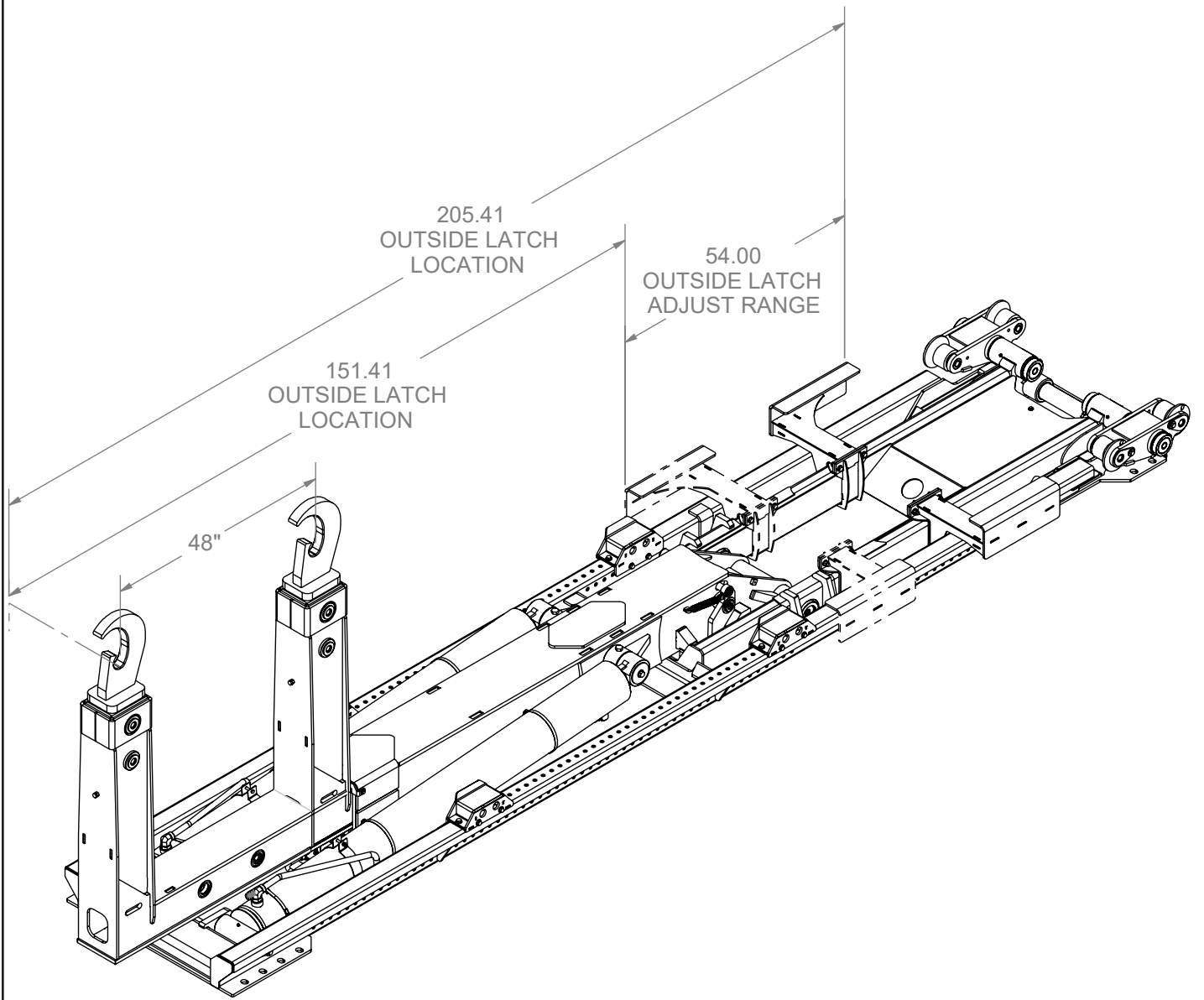
NXT40 Outside Latch Asm Bolt On - 129856 Parts List

PN 129856

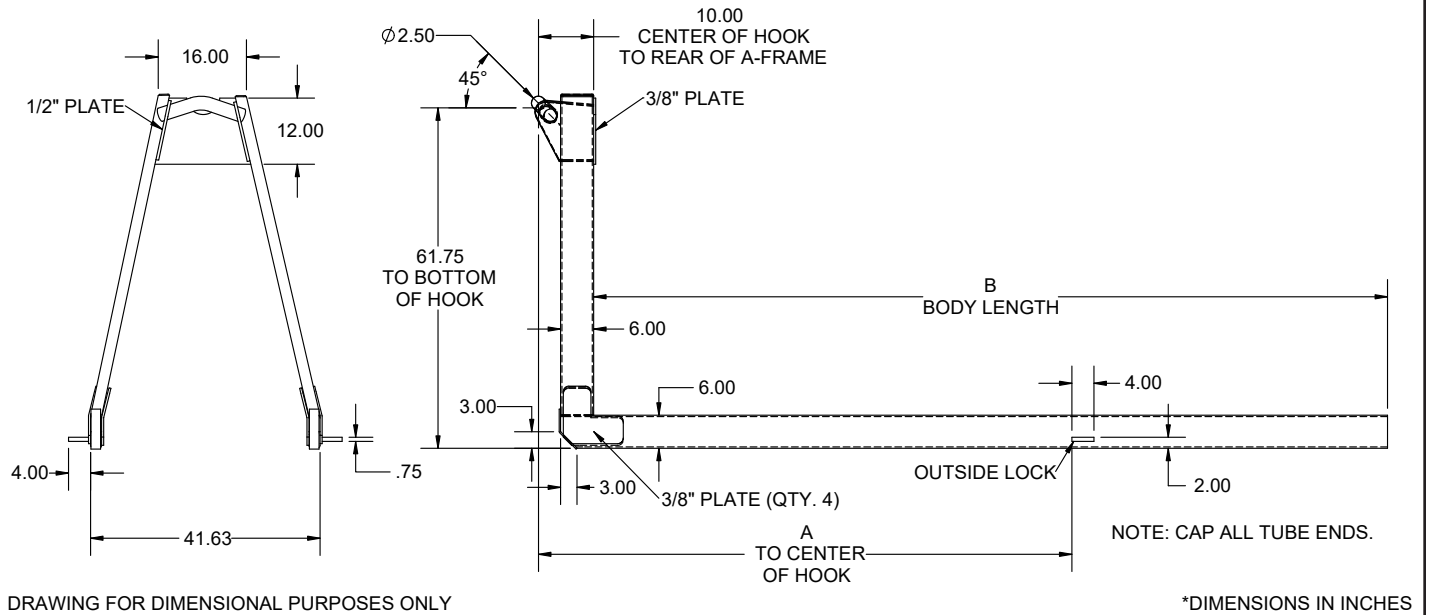
ITEM	PART	DESCRIPTION	QTY
1	129557	WLDMNT LOCK OUTER SS NXT52	1
2	129558	WLDMT SUPPORT LATCH INNER NXT52	2
3	129858	WLDMNT LOCK OUTER CS NXT52	1
4	8833	CAP SCR 0.50-13X2.00 HHGR8	8
5	D0790	WASHER 0.50 SAE FLAT YELLOW GR8	16
6	5468	NUT 0.50-13 HHGR8 NYLOC	8

REV. A

NXT40 Outside Latch Assembly Location - PN 132902



Skid Drawing 61.75HH - PN 134591



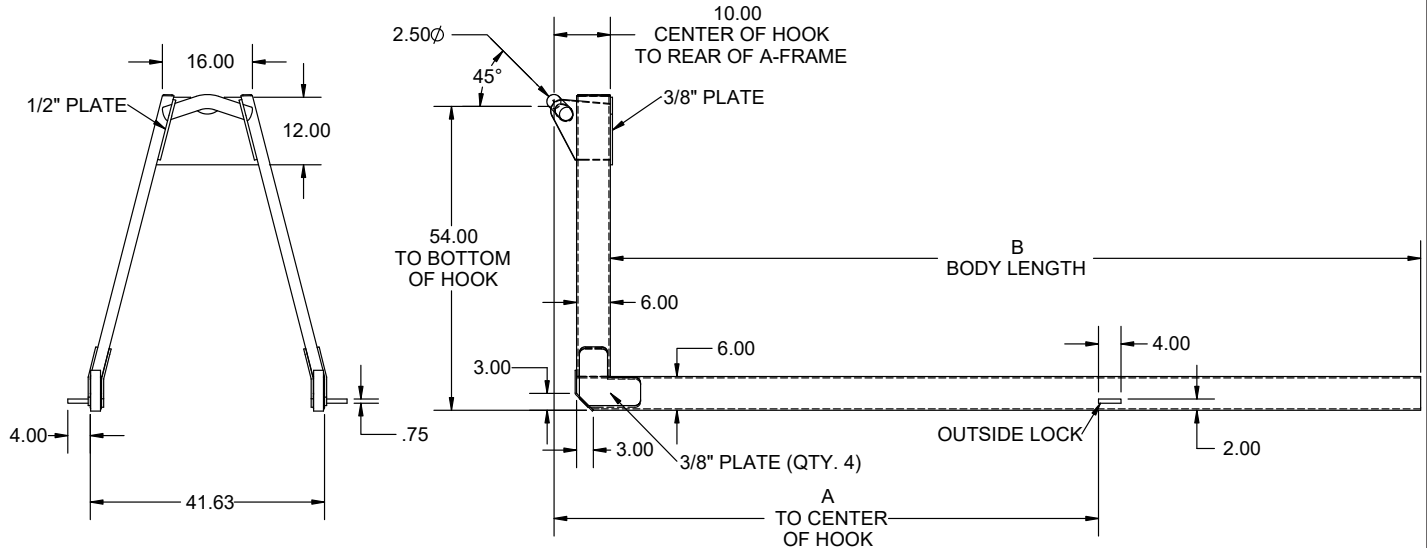
DRAWING FOR DIMENSIONAL PURPOSES ONLY

*DIMENSIONS IN INCHES

PART	DESCRIPTION	A	B
8575	SKID 61.75HH 6X2 16' 156" OUTSIDE LOCK	156	192
8576	SKID 61.75HH 6X2 17' 156" OUTSIDE LOCK	156	204
8577	SKID 61.75HH 6X2 18' 156" OUTSIDE LOCK	156	216
8578	SKID 61.75HH 6X2 19' 156" OUTSIDE LOCK	156	228
8579	SKID 61.75HH 6X2 20' 197.25" OUTSIDE LOCK	197.25	240
8580	SKID 61.75HH 6X2 21' 197.25" OUTSIDE LOCK	197.25	252
8581	SKID 61.75HH 6X2 22' 197.25" OUTSIDE LOCK	197.25	264

NOTES:
DRAWING FOR DIMENSIONAL PURPOSES ONLY.
DIMENSIONS IN INCHES.

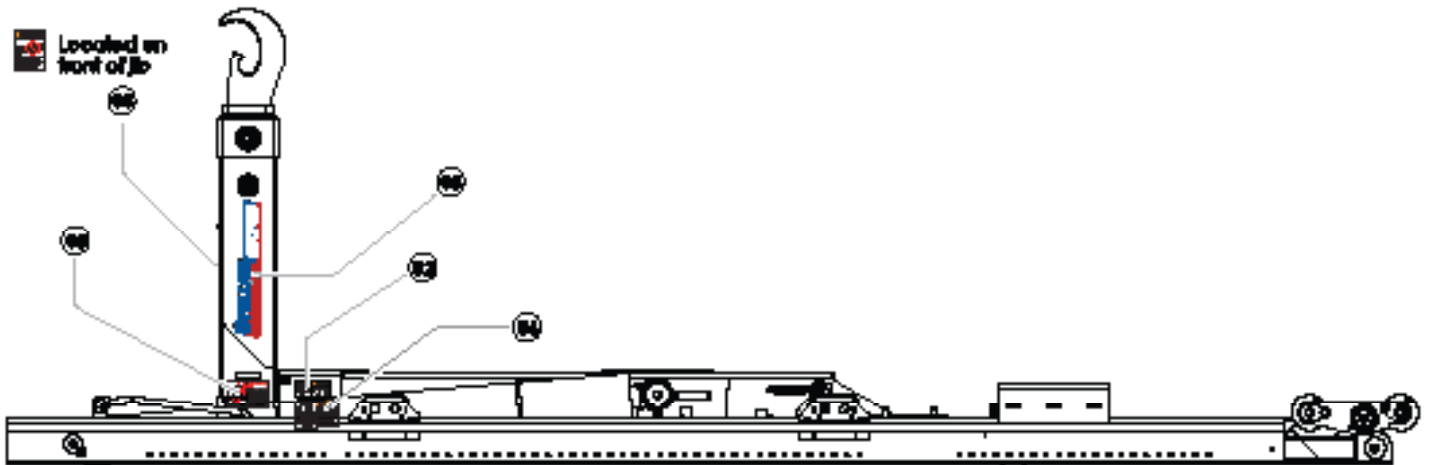
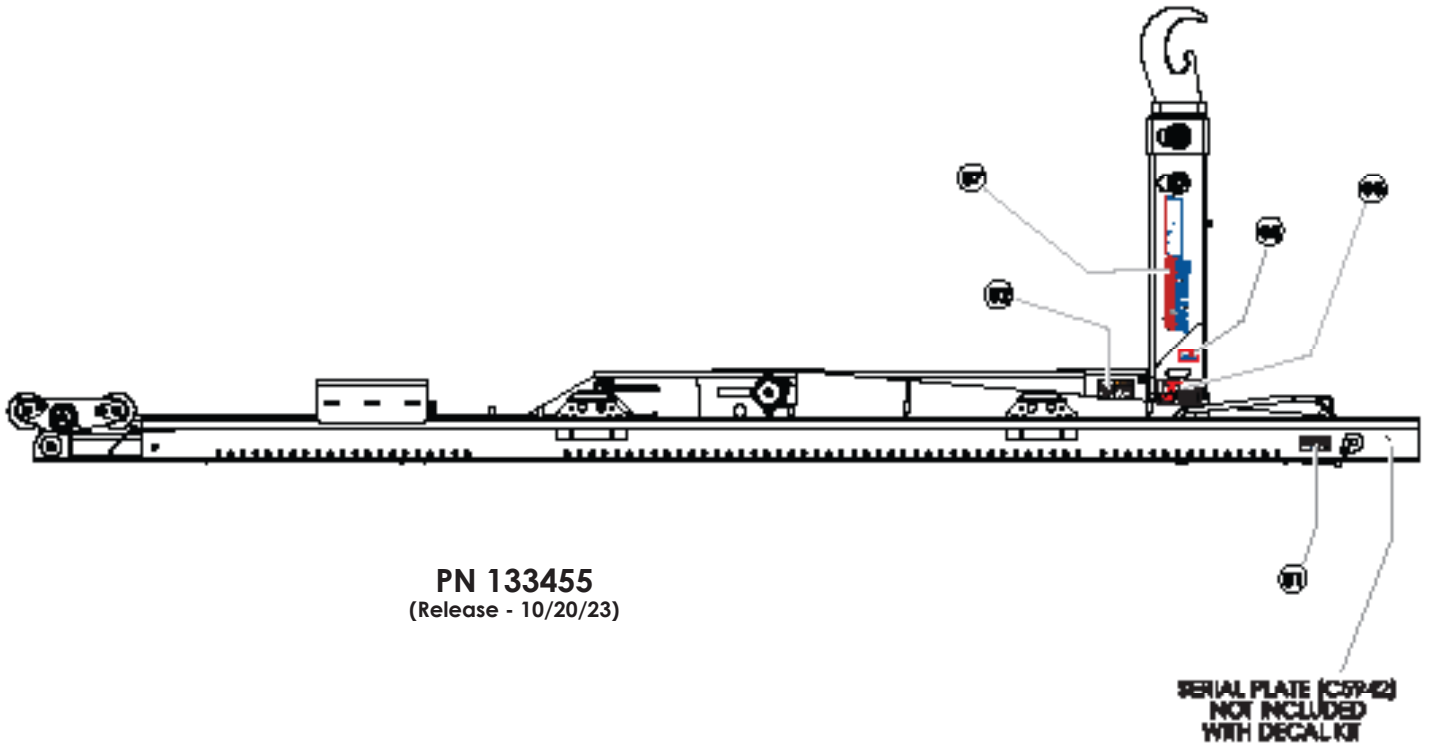
Skid Drawing 54.00HH - PN 134590



PART NO.	DESCRIPTION	A	B
8565	SKID 54.00HH 6X2 16' 156" OUTSIDE LOCK	156	192
8566	SKID 54.00HH 6X2 17' 156" OUTSIDE LOCK	156	204
8567	SKID 54.00HH 6X2 18' 156" OUTSIDE LOCK	156	216
8568	SKID 54.00HH 6X2 19' 156" OUTSIDE LOCK	156	228
8569	SKID 54.00HH 6X2 20' 197.25" OUTSIDE LOCK	197.25	240
134592	SKID 54.00HH 6X2 21' 197.25" OUTSIDE LOCK	197.25	252
134593	SKID 54.00HH 6X2 22' 197.25" OUTSIDE LOCK	197.25	264

NOTES:
DRAWING FOR DIMENSIONAL PURPOSES ONLY.
DIMENSIONS IN INCHES.
CAP ALL TUBE ENDS.

NXT40 Hooklift Decals - PN 133455



ITEM	PN	DESCRIPTION	QTY
01	4214	DECAL CONTACT STELLAR	1
02	25627	DECAL WARNING CRUSH	2
03	45955	DECAL WARNING HOOK HEIGHT MATCH	1
04	35234	DECAL STELLAR MADE IN THE USA	1
05	55832	DECAL DANGER ELECTROCUTION HOOK	2
06	68024	DECAL WARNING UNTRAINED OPERATOR	1
07	133456	DECAL NXT40 STRIPE CS	1
08	133457	DECAL NXT40 STRIPE SS	1



Subject to Change without Notification.
© 2023 Stellar Industries, Inc.