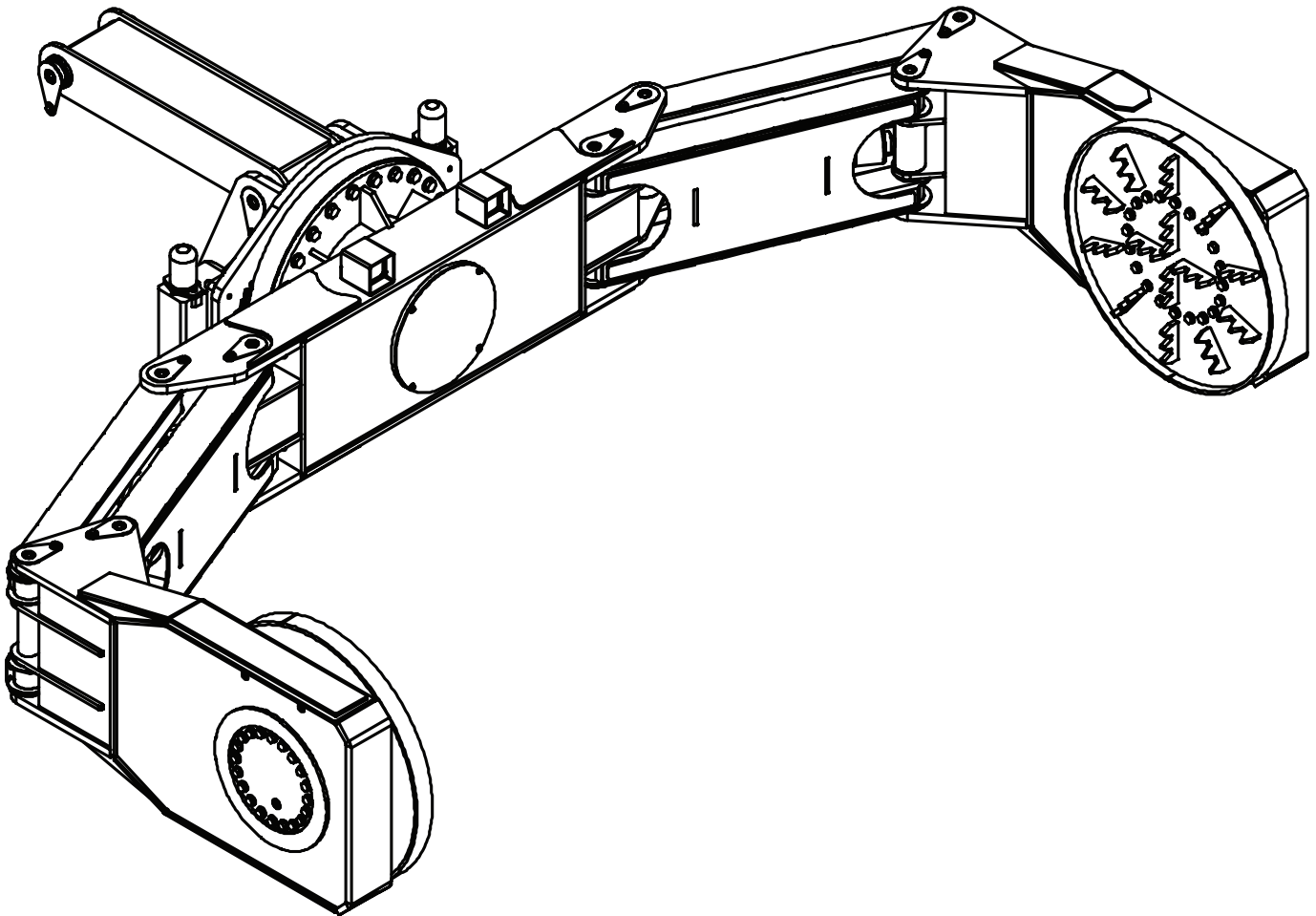


TireMan 20165 Owner's Manual

Installation • Assembly Drawings • Parts



Notice: A copy of this manual must remain with the equipment at all times.
For a printable download copy, please visit: www.stellarindustries.com

Stellar Industries, Inc.

190 State Street

PO Box 169

Garner, IA 50438

800-321-3741

Fax: 641-923-2811

www.stellarindustries.com

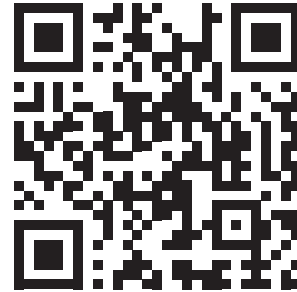
Subject to Change without Notification.
© 2024 Stellar Industries, Inc.

Rev 2
PN: 90385

Model TM20165 Manual Revisions

WARNING

Operating, maintaining, and servicing a Stellar product may expose you to chemicals including, but not limited to, engine exhaust, carbon monoxide, phthalates, and lead. These chemicals are known to the State of California to cause cancer and birth defects (or other reproductive harm). To keep your exposure to a minimum, be sure to avoid breathing exhaust and service your Stellar product in a well-ventilated area while wearing gloves or washing your hands frequently. For more information, go to www.P65Warnings.ca.gov/passenger-vehicle.



www.p65/warning.ca.gov

NOTICE

Cold Weather Performance

Although clear data on cold weather performance from every steel manufacturer is not available for all types and thicknesses of steel, Stellar Industries is confident that the weldments on our products will operate to 100% of their intended purpose to temperatures down to -40° F / C.

It is recommended if Stellar manufactured equipment needs to be used in temperatures below -40° F / C, the operator should pull the unit into a climate-controlled area and allow the weldments to warm up to and then maintain a temperature above this level.

Table of Contents

Introduction.....	iv
Chapter 1 - Specifications	1
Model TM20165 Specifications	2
TM20165 Dimensional Layout.....	3
Chapter 2 - Installation	5
General Installation.....	6
Installer Notice.....	6
Torque Data Chart	7
Hydraulic Installation	8
Face Seal/O-Ring Size Chart	9
Hydraulic Kit - PN 138341	10
Hydraulic Kit - PN 138341 Parts List	11
Hydraulic Kit - PN 138341 Continued.....	12
Hydraulic Kit - PN 138341 Continued.....	13
Hydraulic Installation Drawing - PN 82658	14
TireMan Hydraulic Kit - PN 65365	15
Cooler Wiring.....	16
PTO Schematic.....	17
24V Converter Wiring	18
Decal Placement - PN 77565	19
Chapter 3 - Assembly Drawings.....	21
TM20165 Assembly Standard - PN 63528	22
TM20165 Assembly Standard - PN 63528 Parts List.....	23
TM20165 Asm Standard - PN 63528 Parts List - Cont.....	24
TM20165 Assembly w/Fallback Protection - PN 76685.....	26
TM20165 Asm w/Fallback Protection - PN 76685 Parts.....	27
TM20165 Asm w/Fallback Protection - PN 76685 Parts.....	28
TM20165 Crane Assembly - PN 134694	30
TM20165 Crane Assembly - PN 134694 - Continued	31
TM20165 Crane Assembly - PN 134694 - Continued	32
TM20165 Crane Assembly - PN 134694 - Continued	33
Mounting Kit Subframe Assembly PN 66349.....	34
Mounting Kit Subframe Assembly PN 65349 - Continued	35
Crane Base Stabilizer Assembly - PN 65107	36
Crane Base Stabilizer Assembly - PN 65107 Parts List.....	37
Crane Base Stabilizer Cylinder Assembly - PN 64367	38
Crane Base Stabilizer Ext. Cylinder Asm - PN 64970	39
Non-Crane Base Stabilizer Assembly - PN 64262	40
Reservoir Assembly - PN 86517.....	42
Reservoir Assembly - PN 86517 Parts List.....	43

Introduction

A copy of this manual is provided with every tire manipulator and can be found in the hard plastic manual case that is installed on the chassis. A copy of this manual shall remain with the tire manipulator at all times.

Throughout the manual, three signal words will be used to bring attention to important items:

NOTICE

A *NOTICE* signal word indicates a practice not related to physical injury.

⚠ WARNING

A *WARNING* signal word indicates a hazardous situation which, if not avoided, could result in death or serious injury.

⚠ DANGER

A *DANGER* signal word indicates a hazardous situation which, if not avoided, will result in death or serious injury.

Information contained within this manual does not cover operation, maintenance, or troubleshooting. Please refer to the Large OTR Crane Manual for details on these items.

This manual is not binding. Stellar Industries, Inc. reserves the right to change, at any time, any or all of the items, components, and parts deemed necessary for product improvement or commercial/production purposes. This right is kept with no requirement or obligation for immediate mandatory updating of this manual.

If more information is required or technical assistance is needed, or if you feel that any part of this manual is unclear or incorrect, please contact the Stellar Customer Service Department by phone at 800-321-3741 or email at service@stellarindustries.com.

**For Technical Questions, Information, Parts, or Warranty, Call Toll-Free at
800-321-3741**

Hours: Monday - Friday, 8:00 a.m. - 5:00 p.m. CST

Or email at the following addresses:

Technical Questions, and Information

service@stellarindustries.com

Order Parts

parts@stellarindustries.com

Warranty Information

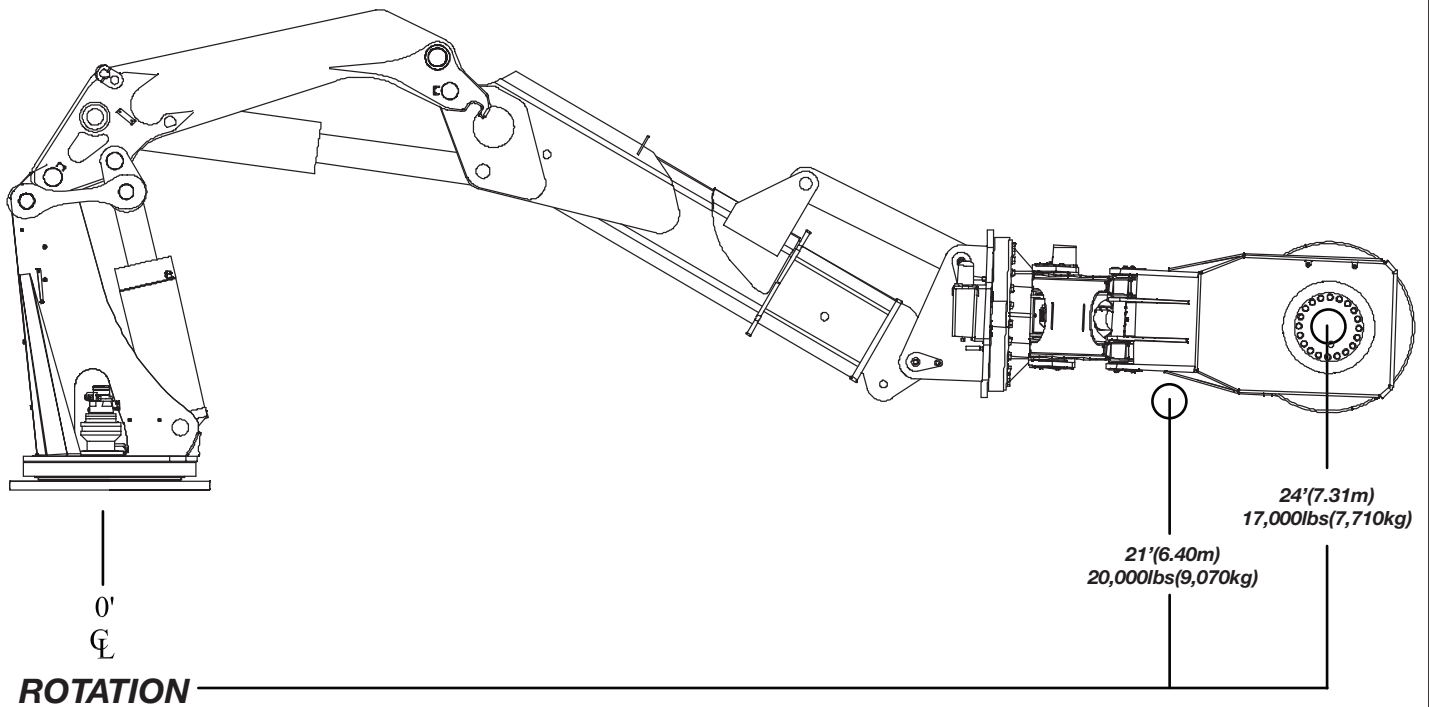
warranty@stellarindustries.com

Chapter 1 - Specifications

CHAPTER CONTENTS

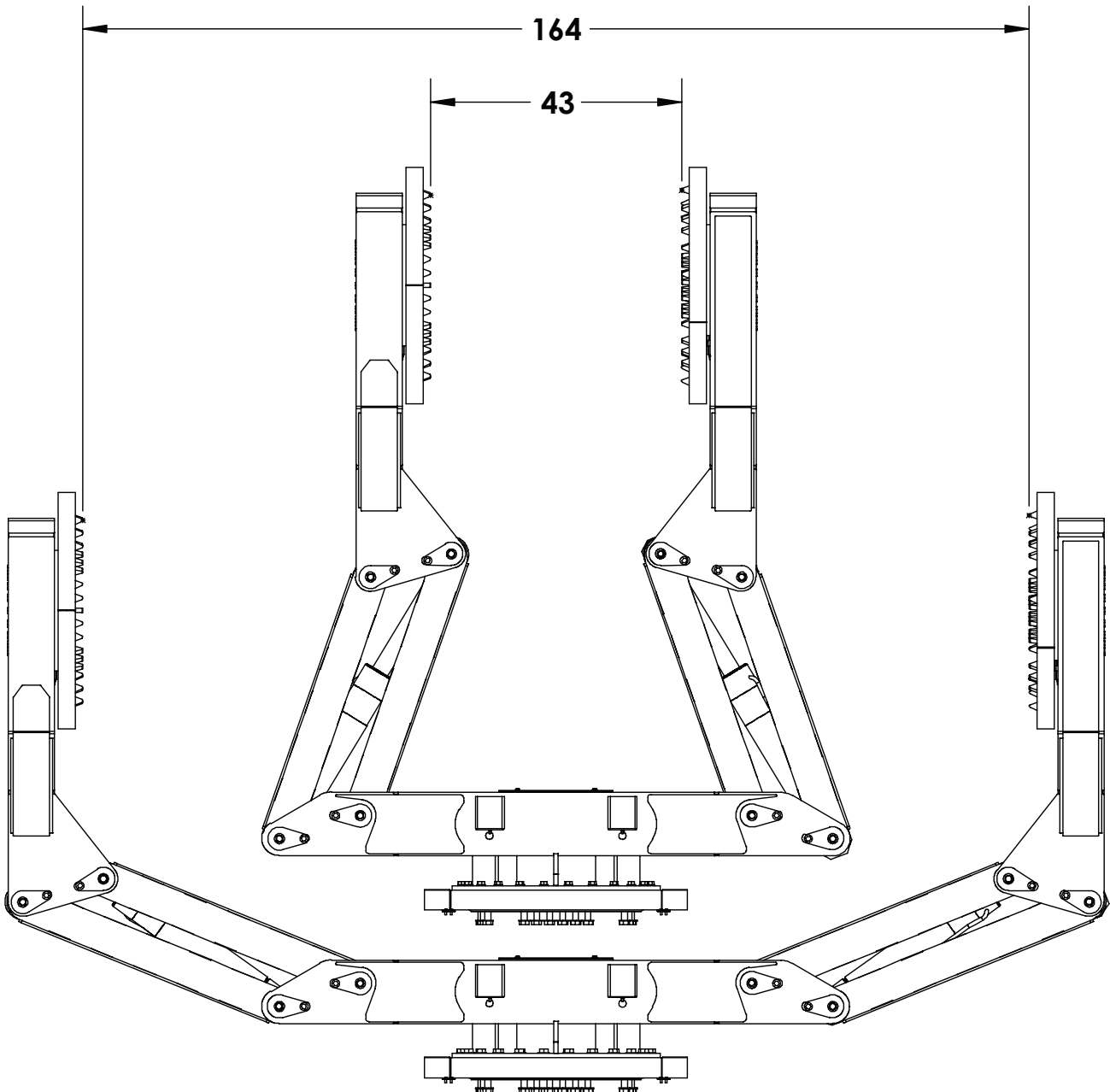
Model TM4110 Specifications	2
TM4110 Dimensional Layout.....	3
TM4110 Dimensional Layout (Continued).....	4

Model TM20165 Specifications



SPECIFICATIONS	
CAPACITY:	20,000 LBS @ 21' (9,070 kg @ 6.4 m)
CLAMPING SPAN:	43" TO 164" (110 cm to 417 cm)
CLAMP CYLINDERS:	5" (12.7 cm) BORE WITH PILOT OPERATED CHECK VALVES
TILT CYLINDER:	PROVIDED BY CRANE EXTENSION BOOM
BODY ROTATION:	320° POWER
ROTATION SYSTEM:	WORM GEAR
CLAMPING PAD ROTATION:	CONTINUOUS 360° POWER
TIREMAN TILT:	+74° TO -27.5°
SYSTEM PRESSURE:	5000 PSI (350 Bar)
HYDRAULIC FLOW:	26-32 GPM (100-120 L/min)
HYDRAULIC CONTROLS:	INCORPORATED WITH THE CRANE CONTROLS
APPROXIMATE SHIPPING WEIGHT:	10,700 LB (4,854 kg)

TM20165 Dimensional Layout



This page left intentionally blank.

Chapter 2 - Installation

CHAPTER CONTENTS

General Installation	6
Installer Notice.....	6
Torque Data Chart	7
Hydraulic Installation	8
Hydraulic Pressure Settings.....	9
Face Seal/O-Ring Size Chart.....	9
Hydraulic Kit w/Fixed Pads - PN 99146	10
Hydraulic Kit w/Fixed Pads - PN 99146 Parts List	11
Hydraulic Kit w/Rotating Pads - PN 99136.....	12
Hydraulic Kit w/Rotating Pads - PN 99136 Parts List.....	13
Decal Placement - PN 35432.....	14

General Installation

This chapter is designed to serve as a general guide for the installation of a Stellar TM20165 on a Stellar Service Crane. Each installation is considered unique so certain portions of this chapter may or may not apply to your direct application. If a question should arise during the installation process, please contact Stellar Customer Service at (800) 321 3741.

This crane is designed for use with a Stellar Service Crane installed on a vehicle that meets the minimum chassis requirements of the crane. It is the installer's responsibility to assure that the unit is mounted on a platform that will support the maximum crane rating of this crane.

⚠ WARNING Do not install this crane/manipulator on a body not capable of handling the loads imposed on it. Failure to do so may result in serious injury or death.

Installer Notice

According to Federal Law (49 cfr part 571), each final-stage manufacturer shall complete the vehicle in such a manner that it conforms to the standards in effect on the date of manufacture of the incomplete vehicle, the date of final completion, or a date between those two dates. This requirement shall, however, be superseded by any conflicting provisions of a standard that applies by its terms to vehicles manufactured in two or more stages.

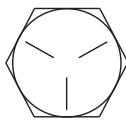
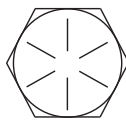
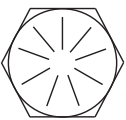
Therefore, the installer of Stellar® Cranes and Bodies is considered one of the manufacturers of the vehicle. As such a manufacturer, the installer is responsible for compliance with all applicable federal and state regulations. They are required to certify that the vehicle is in compliance with the Federal Motor Vehicle Safety Standards and other regulations issued under the National Traffic and Motor Vehicle Safety Act.

Please reference the Code of Federal Regulations, title 49 - Transportation, Volume 5 (400-999), for further information, or visit <http://www.gpoaccess.gov/nara/index.html> for the full text of Code of Federal Regulations.

Torque Data Chart

When using the torque data in the chart, the following rules should be observed:

- Bolt manufacturer's particular specifications should be consulted when provided.
- Flat washers of equal strength must be used.
- All torque measurements are given in foot-pounds. To convert to inch-pounds, multiply by 12.
- Torque values specified are for bolts with residual oils or no special lubricants applied.
- Torque values for socket-head capscrews are the same as for Grade 8 capscrews.

		GRADE 5		GRADE 8		GRADE 9
						
Size (DIA-TPI)	Bolt DIA (Inches)	Plain (Ft-Lb)	Plated (Ft-Lb)	Plain (Ft-Lb)	Plated (Ft-Lb)	Plated (Ft-Lb)
5/16-18	0.3125	17	13	25	18	22
3/8-16	0.3750	31	23	44	33	39
7/16-14	0.4375	49	37	70	52	63
1/2-13	0.5000	75	57	105	80	96
9/16-12	0.5625	110	82	155	115	139
5/8-11	0.6250	150	115	220	160	192
3/4-10	0.7500	265	200	375	280	340
7/8-9	0.8750	395	295	605	455	549
1-8	1.000	590	445	910	680	823
1 1/8-7	1.1250	795	595	1290	965	1167
1 1/4-7	1.2500	1120	840	1815	1360	1646
1 3/8-6	1.3750	1470	1100	2380	1780	2158
1 1/2-6	1.500	1950	1460	3160	2370	2865

- **NOTICE** Do not use these values if a different torque value or tightening procedure is given for a specific application. Torque values listed are for general use only. Check tightness of fasteners periodically.
- Shear bolts are designed to fail under predetermined loads. Always replace shear bolts with identical grade.
- Fasteners should be replaced with the same or higher grade. If higher grade fasteners are used, these should only be tightened to the strength of the original.
- Tighten plastic insert or crimped steel-type lock nuts to approximately 110 percent of the dry torque values shown in the chart below, applied to the nut, not to the bolt head. Tighten toothed or serrated-type lock nuts to the full torque value. *Note: "Lubricated" means coated with a lubricant such as engine oil, or fasteners with phosphate and oil coatings. "Dry" means plain or zinc plated without lubrication. Tighten lubricated bolts to approximately 80% of dry bolts.*

Hydraulic Installation

Never modify or alter any of the equipment, whether mechanical, electrical, or hydraulic, without Stellar Industries' approval.

⚠ WARNING Do not touch or grab any hoses that could be under pressure. Release system pressure before attempting to make adjustments or repairs.

Do not attempt service or repair when PTO is engaged.

Disassemble and assemble hydraulic components on a clean surface.

Clean all metal parts in a nonflammable cleaning fluid. Then lubricate all components to aid in assembly.

⚠ WARNING Hydraulic fluid expands when heated. This raises the pressure in an unventilated tank. Release the tank pressure before removing the cap completely. Failure to do so may cause the oil to shoot out of the tank very rapidly and cause severe burns.

⚠ WARNING Do not rely on the hydraulic fluid to support the boom or crane. If hydraulic fluid escapes, the boom or crane can fall immediately. Make sure the ground or blocking is supporting the boom before performing any maintenance or repair.

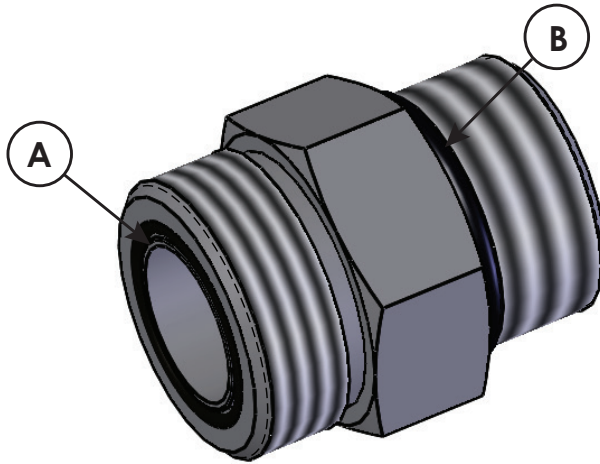
NOTICE Contaminants in a hydraulic system affect operation and will result in serious damage to the system components. Dirty hydraulic systems are a major cause of component failures.

If evidence of foreign particles is found in the hydraulic system, flush the system.

When installing metal hydraulic tubes, tighten all fittings finger tight. Then, in order, tighten the fittings at the rigid end, the adjustable end, and the mounting brackets. After tubes are mounted, install the hoses. Connect both ends of the hose with all fittings finger tight. Position the hose so it does not rub the machine or another hose and has a minimum of bending and twisting. Tighten fittings in both couplings.

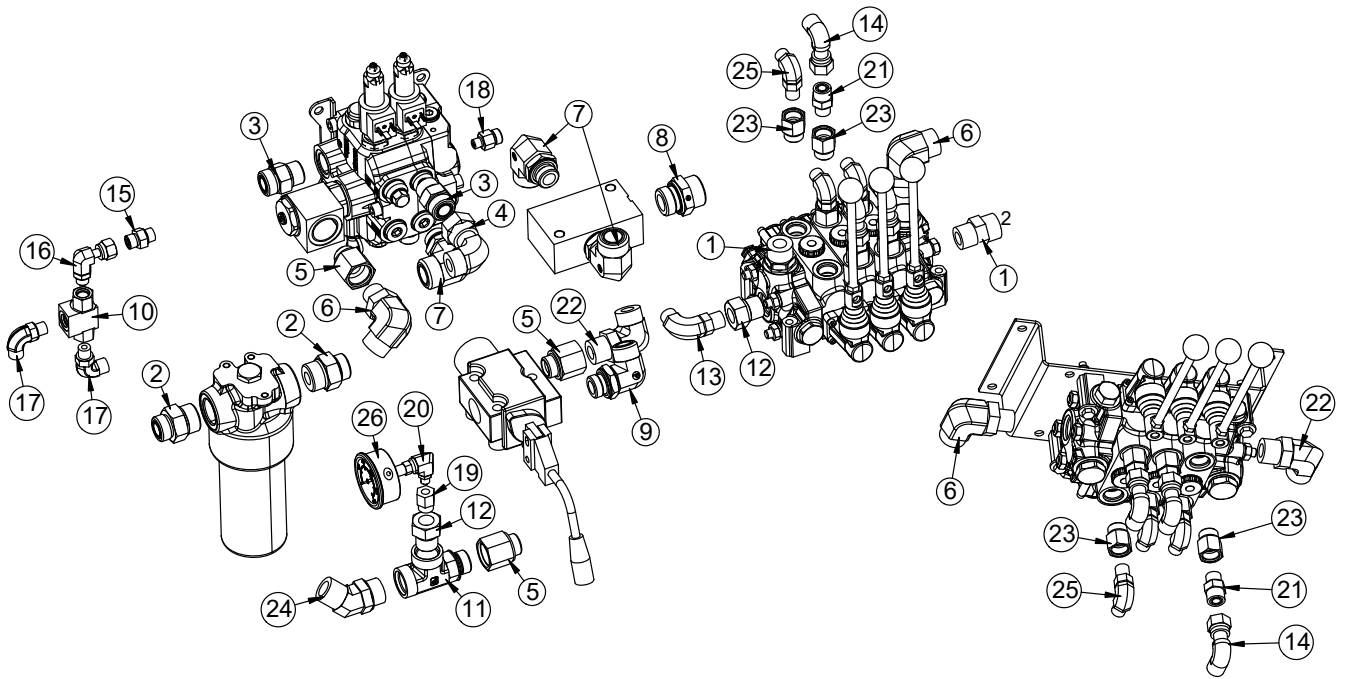
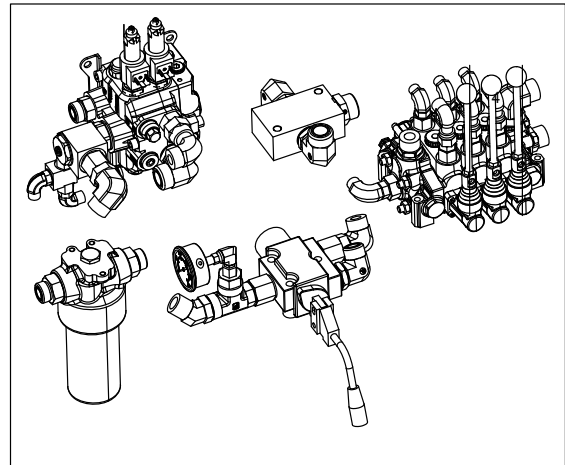
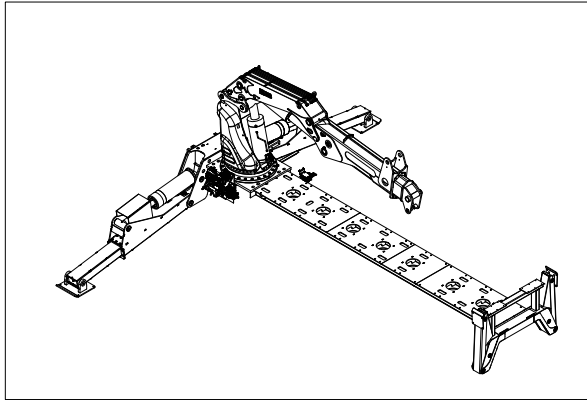
Due to manufacturing methods, there is a natural curvature to a hydraulic hose. The hose should be installed so any bend is with this curvature.

Face Seal/O-Ring Size Chart



Hose Size	Fitting Size	Face Seal (A) Stellar® PN	O-ring Boss (B) Stellar® PN
1/4"	#4	C2027	D1245
3/8"	#6	C2028	D1246
1/2"	#8	C2029	D1247
5/8"	#10	32223	D1248
3/4"	#12	D1244	D1249
1"	#16		D1250

Hydraulic Kit - PN 138341



ITEMS NOT SHOWN

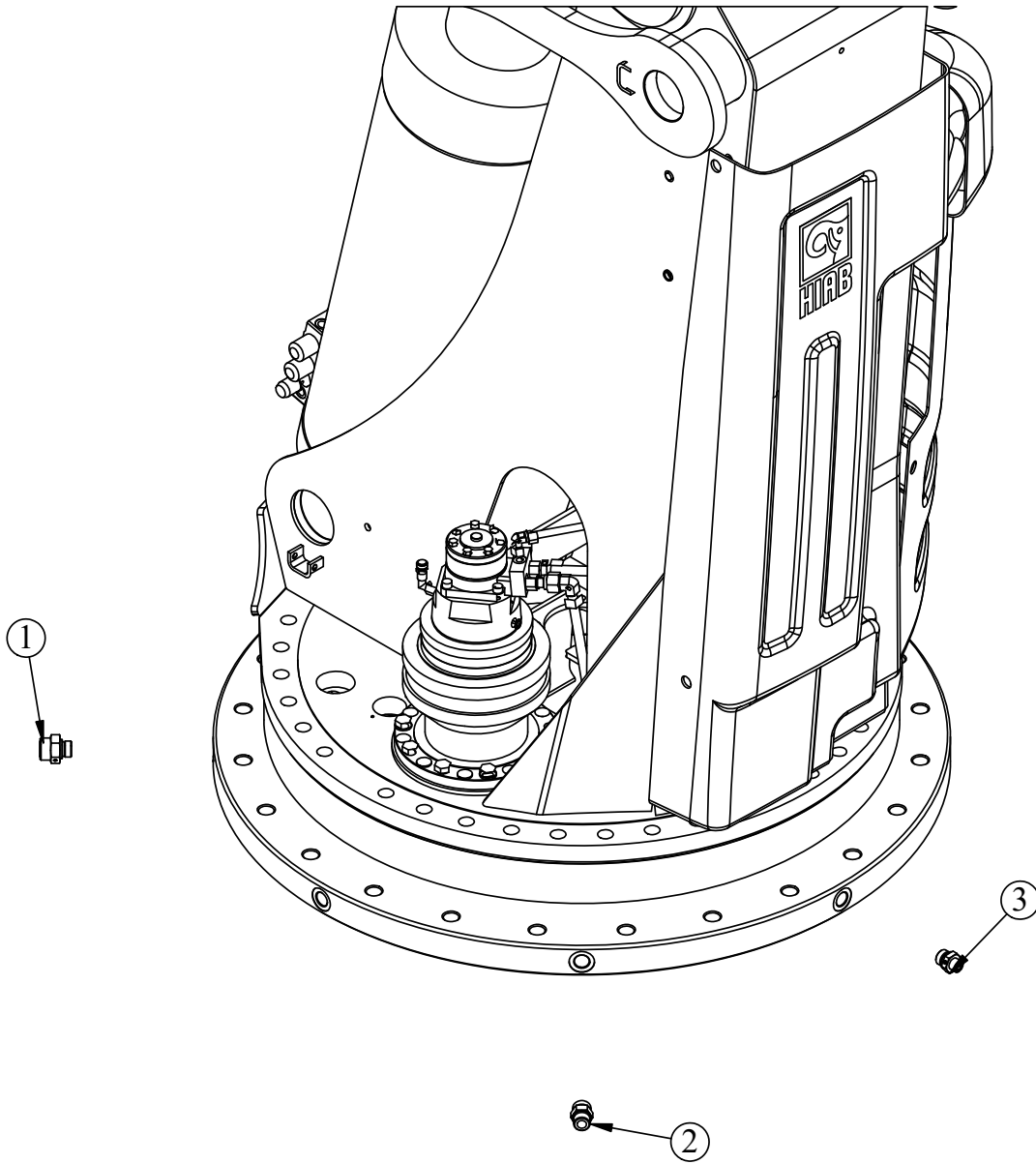
PART	DESCRIPTION	QTY
80998	HOSE KIT TMP20165 V2	1
82658	INST DWG HYD TMP20165	1
4042	HOSE PROTECTOR 0.38 AS-B-15 WIDTH 1.94	12
4043	HOSE PROTECTOR 0.50 AS-B-17 WIDTH 2.25	120
17288	HOSE PROTECTOR 1.00 AS-B-27 WIDTH 2.81	56

Hydraulic Kit - PN 138341 Parts List

PN 138341			
ITEM	PART	DESCRIPTION	QTY
1	C2142	FTG 12-12 MFS-MORB STRAIGHT	2
2	59763	FTG 12-16 MFS-MBSPP STRAIGHT	2
3	31658	FTG 12-12 MFS-MBSPP STRAIGHT	3
4	C4903	FTG 12-12 MFS-FFSS 90	1
5	42053	FTG 12-12 MBSPP W/BS-FORB	3
6	51274	FTG 16-12 MFS-MAORB 90	3
7	65584	FTG 16-12 MFS-MBSPP 90	3
8	65580	FTG 16-16 MFS-MBSPP STRAIGHT	1
9	65582	FTG 12-12 MFS-MBSPP 90	1
10	67060	VALVE SHUTTLE VONBERG 65125-6T	1
11	30542	FTG 12-12-12 MAORB-FORB-FORB TEE	1
12	C2053	FTG 12-8 MORB-FORB STRAIGHT REDUCER	2
13	C5547	FTG 6-8 MFS-MAORB 90	1
14	C2376	FTG 8-8 MFS-FFSS 90	6
15	65587	FTG 6-6 MFS-MBSPP STRAIGHT	1
16	12866	FTG 6-6 FFSS-MAORB 90	1
17	C0338	FTG 6-6 MFS-MAORB 90	2
18	65670	FTG 6-4 MFS-MBSPP STRAIGHT	1
19	10980	FTG 8-4 MORB-FORB STRAIGHT REDUCER	1
20	51817	FTG 4-4 MAORB-FORB 90	1
21	1554	FTG 8-8 MFS-MORB STRAIGHT	14
22	C5968	FTG 12-12 MFS-MAORB 90	2
23	14441	FTG 10-8 MORB-FORB STRAIGHT REDUCER	12
24	7351	FTG ST TH ELBOW 45 DEG 12V5OLO	1
25	1556	FTG 8-8 MFS-MAORB 90	6
26	39780	GAUGE OIL LF 2.5 0-6000 CBM SAE	1

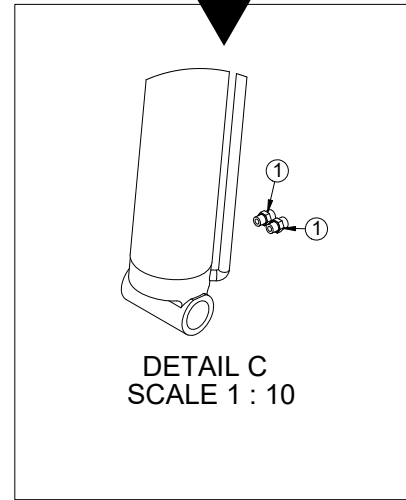
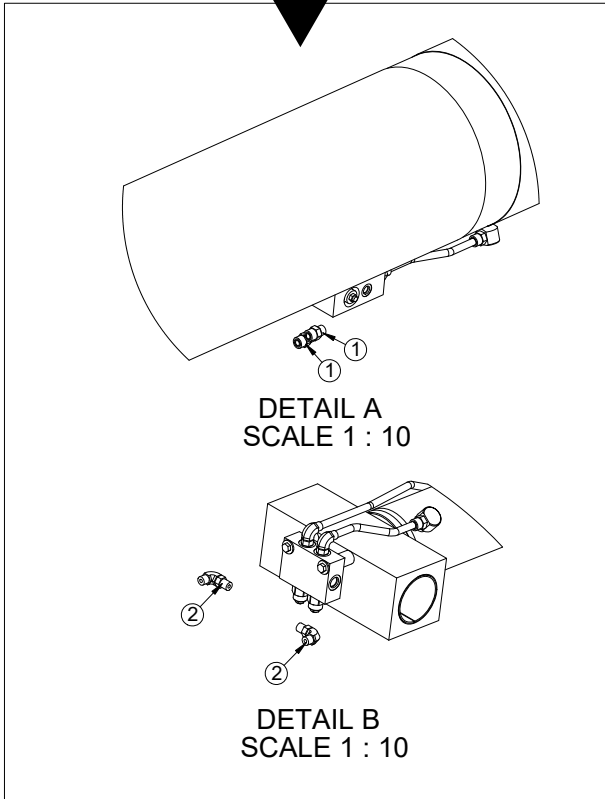
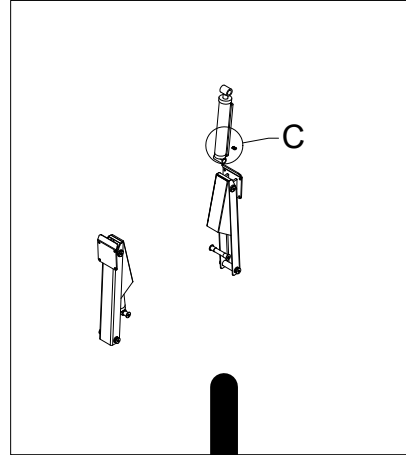
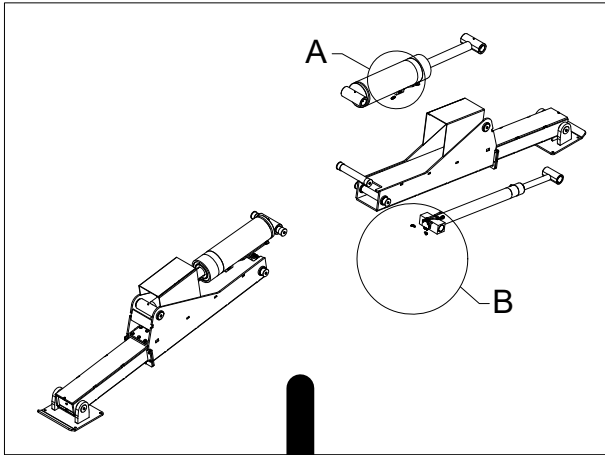
NOTES: CRANE ASM SHOWN FOR REFERENCE ONLY.

Hydraulic Kit - PN 138341 Continued



PN 138341			
ITEM	PART	DESCRIPTION	QTY
1	65579	FTG 16-12 MFS-MBSPP STRAIGHT	1
2	31658	FTG 12-12 MFS-MBSPP STRAIGHT	3
3	31659	FTG 8-12 MFS-MBSPP STRAIGHT	1

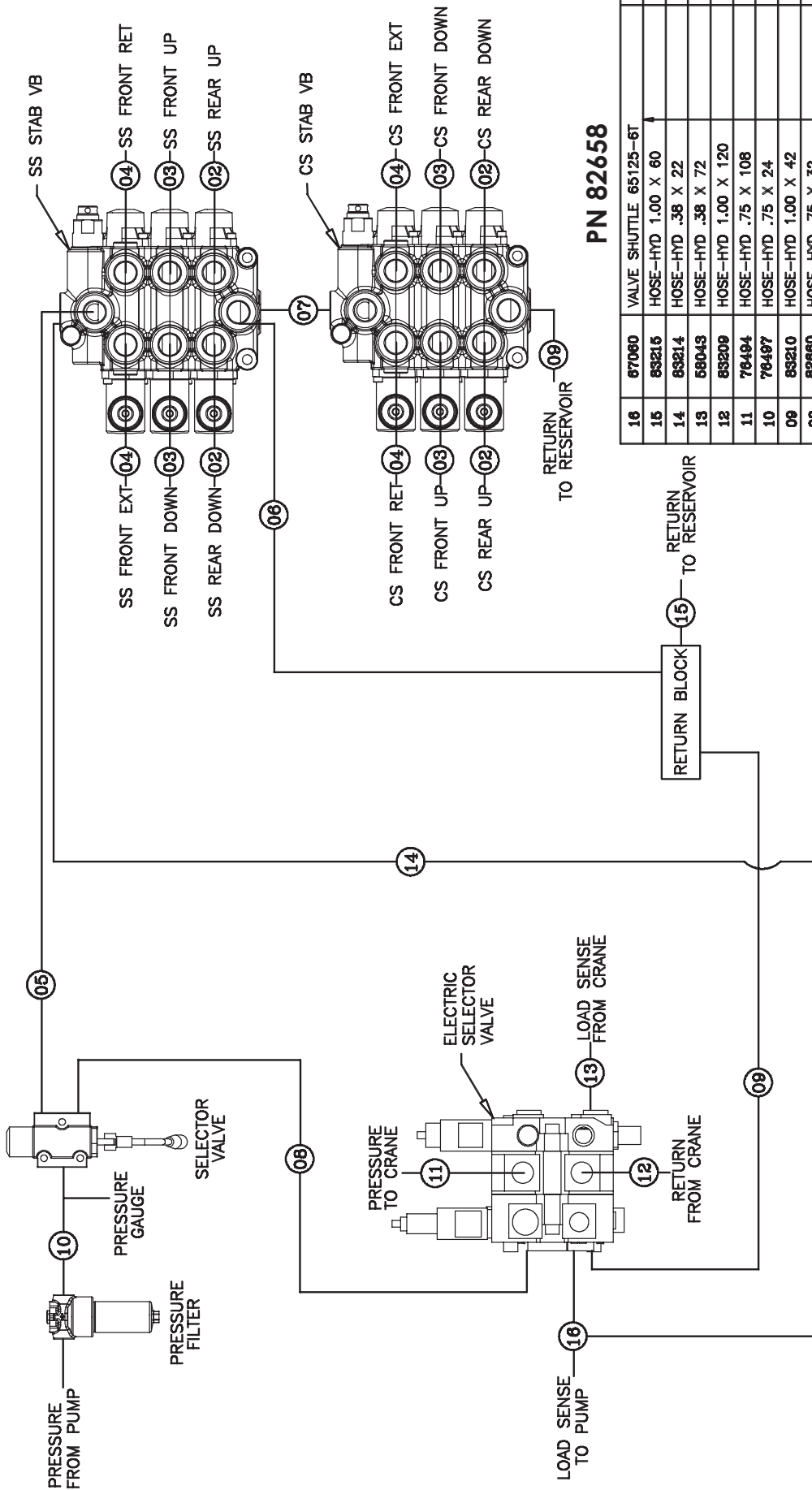
Hydraulic Kit - PN 138341 Continued



PN 138341

ITEM	PART	DESCRIPTION	QTY
1	1554	FTG 8-8 MFS-MORB STRAIGHT	14
2	65663	FTG 8-8 MORB-MFS 90 SWIVEL	4

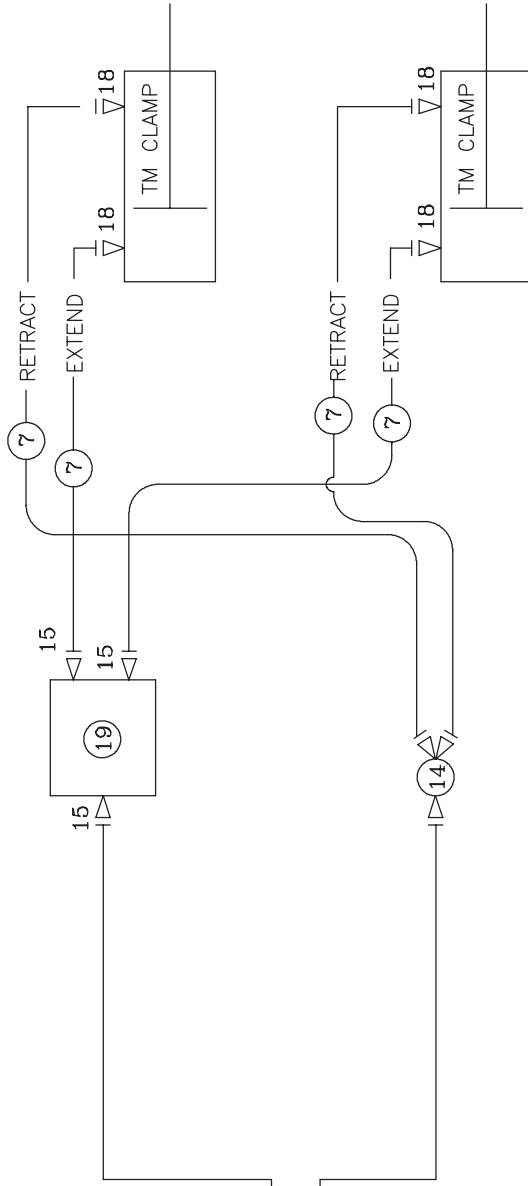
Hydraulic Installation Drawing - PN 82658



PN 82658

ITEM	PART No.	DESCRIPTION	QTY
16	87060	VALVE SHUTTLE 65125-6T	1
15	83216	HOSE-HYD 1.00 X 60	1ref
14	83214	HOSE-HYD .38 X 22	1ref
13	58043	HOSE-HYD .38 X 72	1ref
12	83209	HOSE-HYD 1.00 X 120	1ref
11	76494	HOSE-HYD .75 X 108	1ref
10	76497	HOSE-HYD .75 X 24	1ref
09	83210	HOSE-HYD 1.00 X 42	2ref
08	82860	HOSE-HYD .75 X 32	1ref
07	83213	HOSE-HYD .75 X 132	1ref
06	83208	HOSE-HYD 1.00 X 22	1ref
05	83207	HOSE-HYD .75 X 32	1ref
04	83212	HOSE-HYD .50 X 120	4ref
03	83211	HOSE-HYD .50 X 144	4ref
02	82859	HOSE-HYD .50 X 396	4ref
01	80908	HOSE KIT TMP20165 V2 (inci2-15)	1

TireMan Hydraulic Kit - PN 65365



TM CLAMP EXT(CLOSE) 16,17,11 12,18

TM CLAMP RET(OPEN) 16,17,12 11,18

TM BODY ROT CCW 16,17,10 9,18

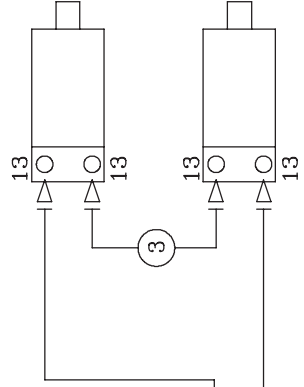
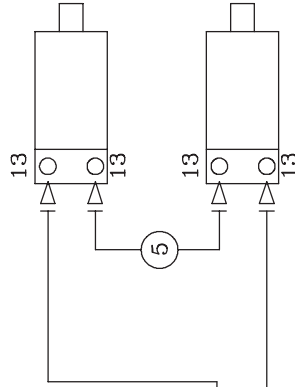
TM BODY ROT CW 16,17,9 10,18

TM PAD ROT CCW 16,17,10 9,18

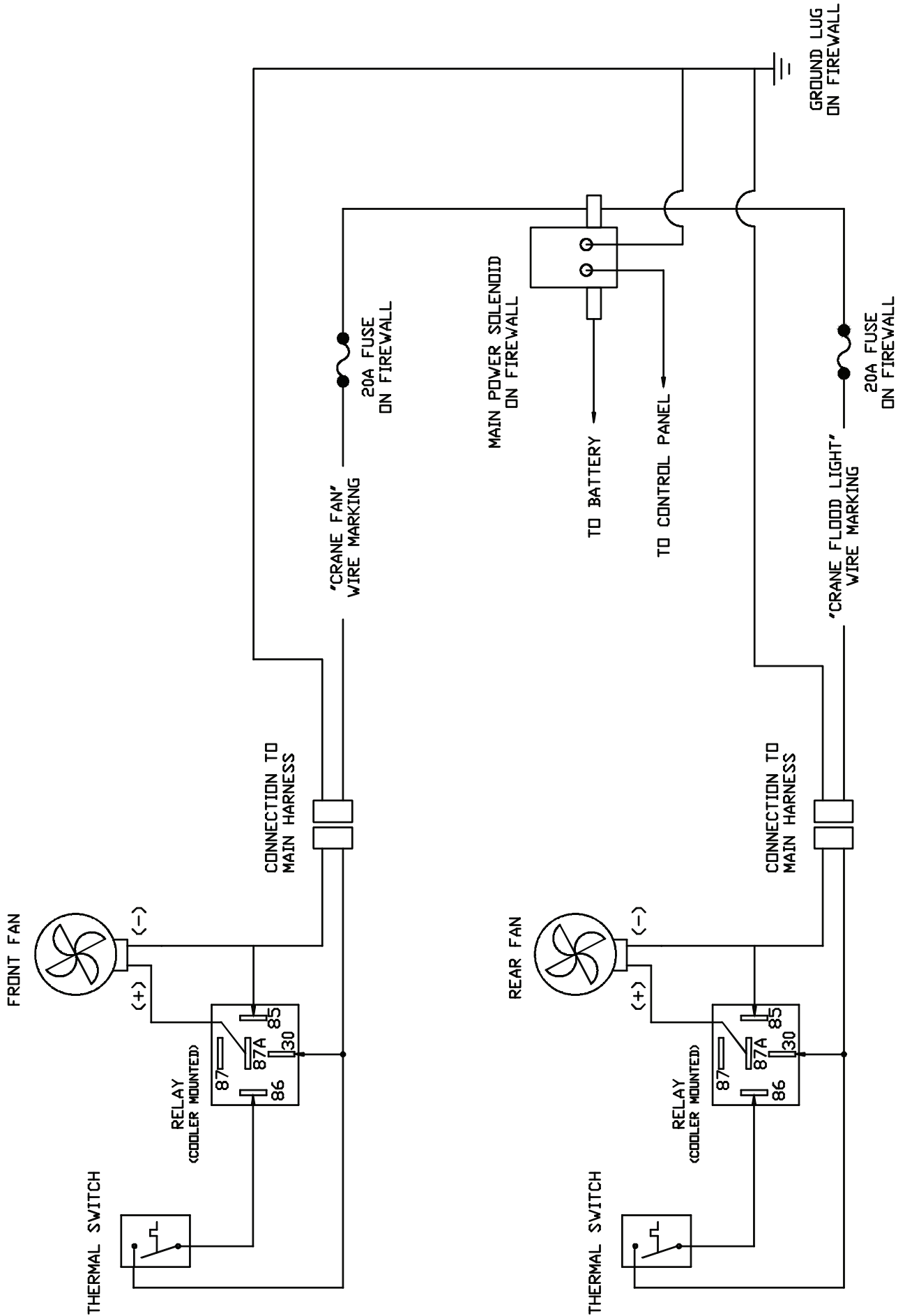
TM PAD ROT CW 16,17,9 10,18

PN 65365

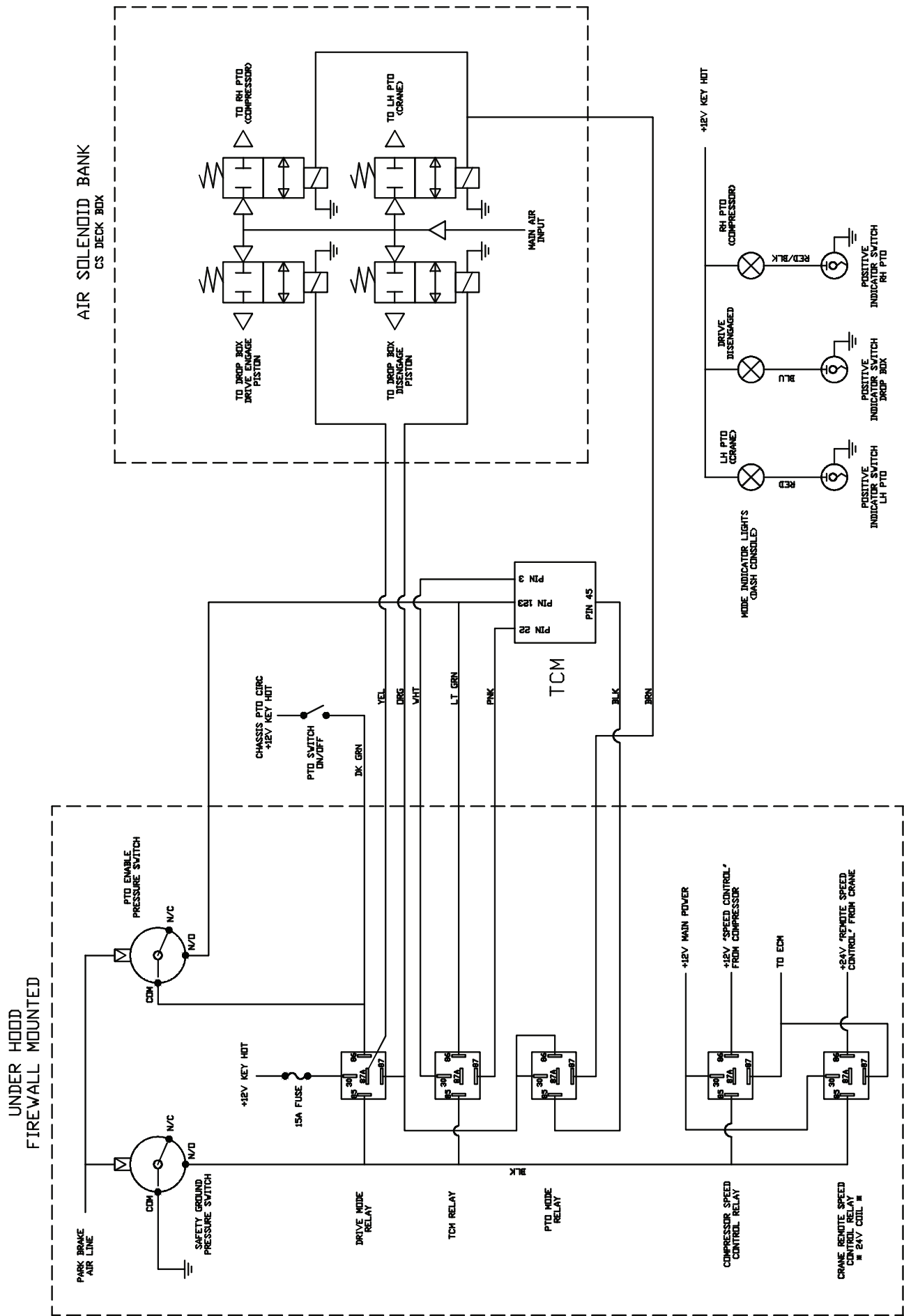
ITEM	PART No.	DESCRIPTION	QTY
19	65095	VALVE COMB DIV FD50-45-8TD-P-66	1
18	1554	FTG 8-8 MFS-MORB STRAIGHT	10
17	21400	FTG 8-8 MORB-FJS STRAIGHT	6
16	D1871	FTG 10-8 FJ-MJ STRAIGHT REDUCER	6
15	1556	FTG 8-8 MFS-MAORB 90	3
14	C2218	FTG 8-8-8 MFS-MFS-TEE	1
13	C3643	FTG 8-10 MFS-MAORB 90	8
12	65573	QUICK COUPLER 2FFN12-12SAE-M	2
11	65572	QUICK COUPLER 2FFN12-12SAE-F	2
10	13557	QUICK COUPLER 2FFN38-12SAE-M	4
09	13556	QUICK COUPLER 2FFN38-12SAE-F	4
08			
07	78077	HOSE-HYD 0.50 X 60	4ref
06	31676	HOSE-HYD 0.50 X 120	2ref
05	78074	HOSE-HYD 0.50 X 52	1ref
04	78073	HOSE-HYD 0.50 X 124	2ref
03	78076	HOSE-HYD 0.50 X 310	1ref
02	78075	HOSE-HYD 0.50 X 272	2ref
01	65571	HOSE KIT, TM20165 (incl: 2-7)	1



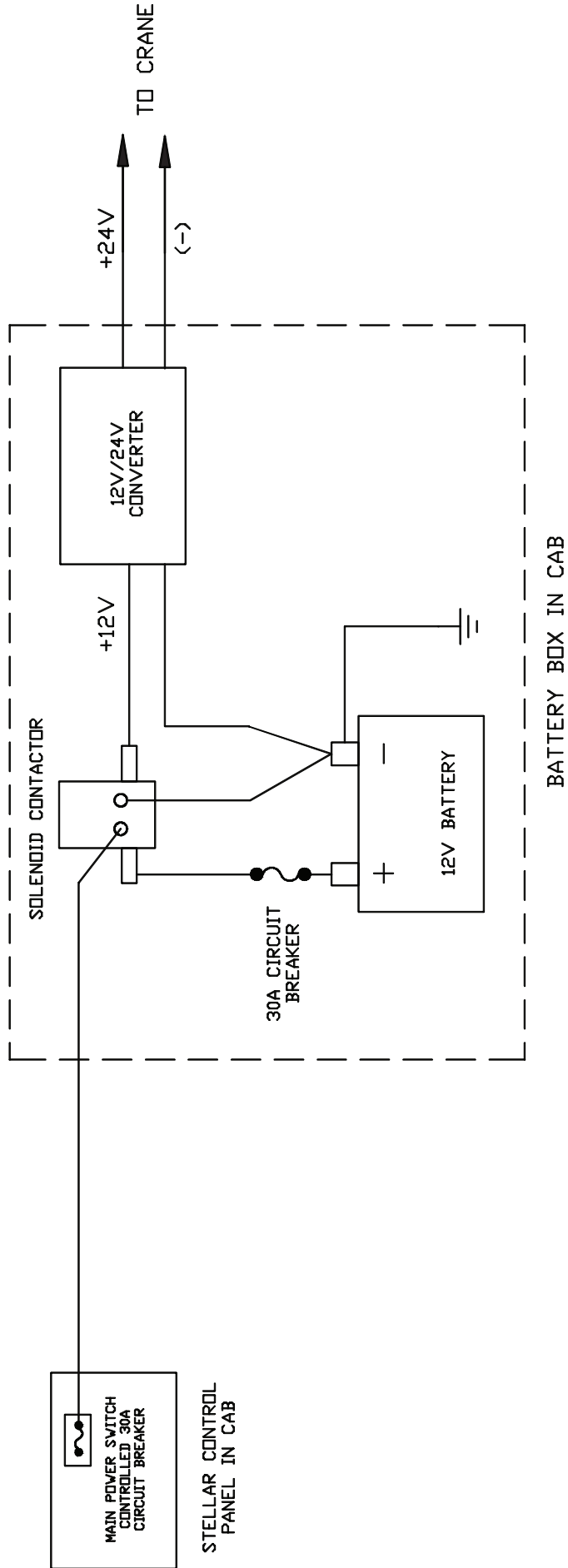
Cooler Wiring



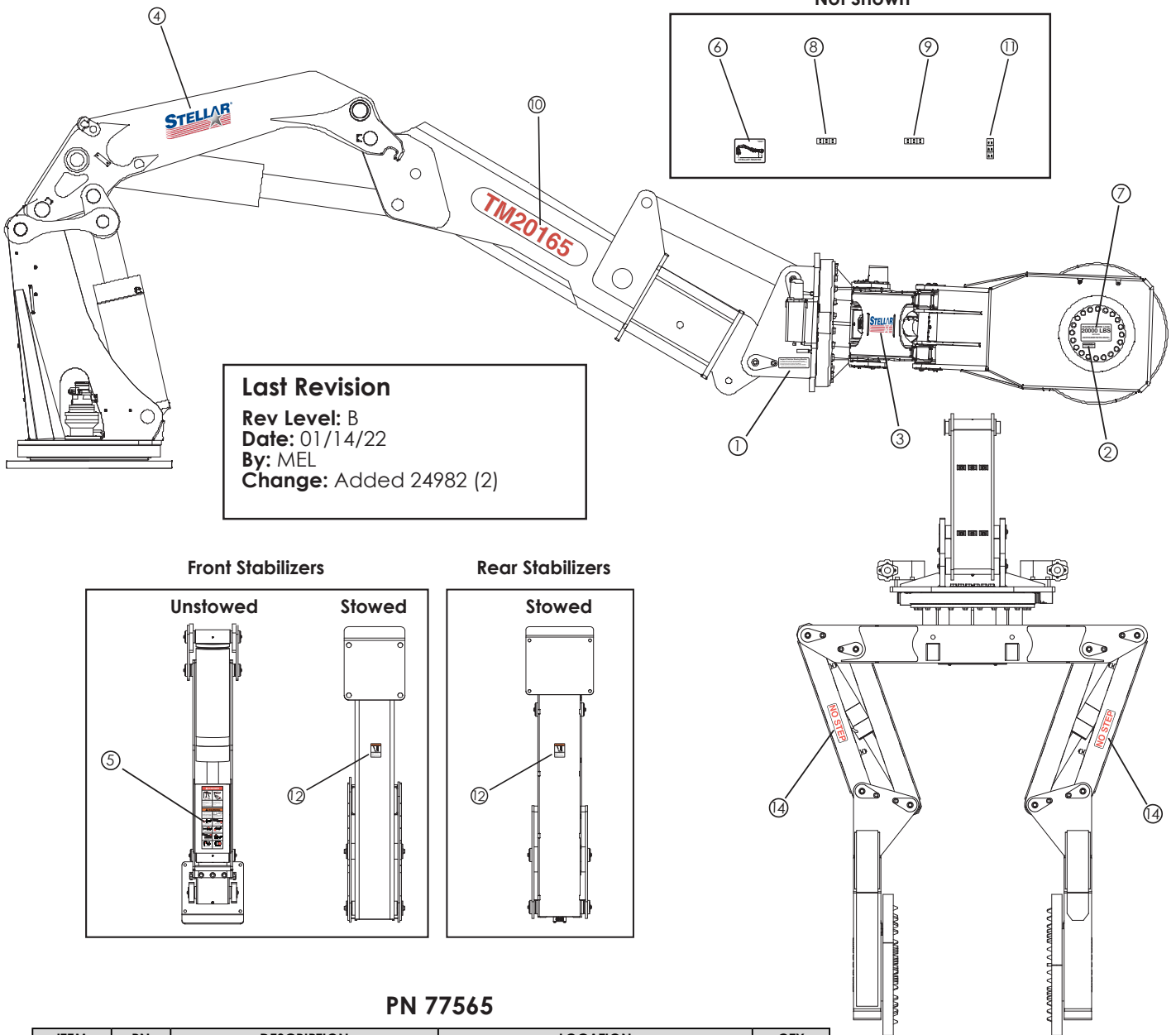
PTO Schematic



24V Converter Wiring



Decal Placement - PN 77565



PN 77565

ITEM	PN	DESCRIPTION	LOCATION	QTY
1	22617	DECAL ROTATION BEARING	Rotation Bearing Base	1
2	22618	DECAL GREASE WEEKLY	Tire Man Arms - Both Sides	2
3	52681	DECAL STELLAR LOGO 6.00X16.50	TireMan Link - Both Sides	2
4	54589	DECAL STELLAR LOGO 8.00x22.25	Main Boom - Both Sides	2
5	54781	DECAL WARNING PLACARD	Front Stabilizer Leg - Both Sides	2
6	69749	DECAL CAPACITY TM20165	On body near control center - Not Shown	2
7	77562	DECAL RATED LOAD TM20165	Tire Man Arms - Both Sides	2
8	77563	DECAL STABILIZERS TM20165 SS	Near valve banks - Not Shown	1
9	77564	DECAL STABILIZERS TM20165 CS	Near valve banks - Not Shown	1
10	77566	DECAL IDENTIFICATION TM20165	Main Boom - Both Sides	2
11	77569	DECAL VB CONTROL TM20165	Near valve banks - Not Shown	1
12	C4795	DECAL WARNING STABILIZER	Front/Rear Stabilizer Legs - Both Sides	4
13	81771	DECAL TM20165 PUSH/PULL	Near Selector Valve - Not shown	1
14	24982	DECAL NO STEP 5.00X1.25	Tire Man Arms - Both Sides	2

For use with body:

ITEM	PN	DESCRIPTION	LOCATION	QTY
15	C4545	DECAL DANGER ELECTROCUTION	Four corners of the body.	4
16	C5910	DECAL STELLAR LOGO 3.75X9.00	Optional	1
17	C5911	DECAL STELLAR LOGO 1.65X4.50	Optional	3

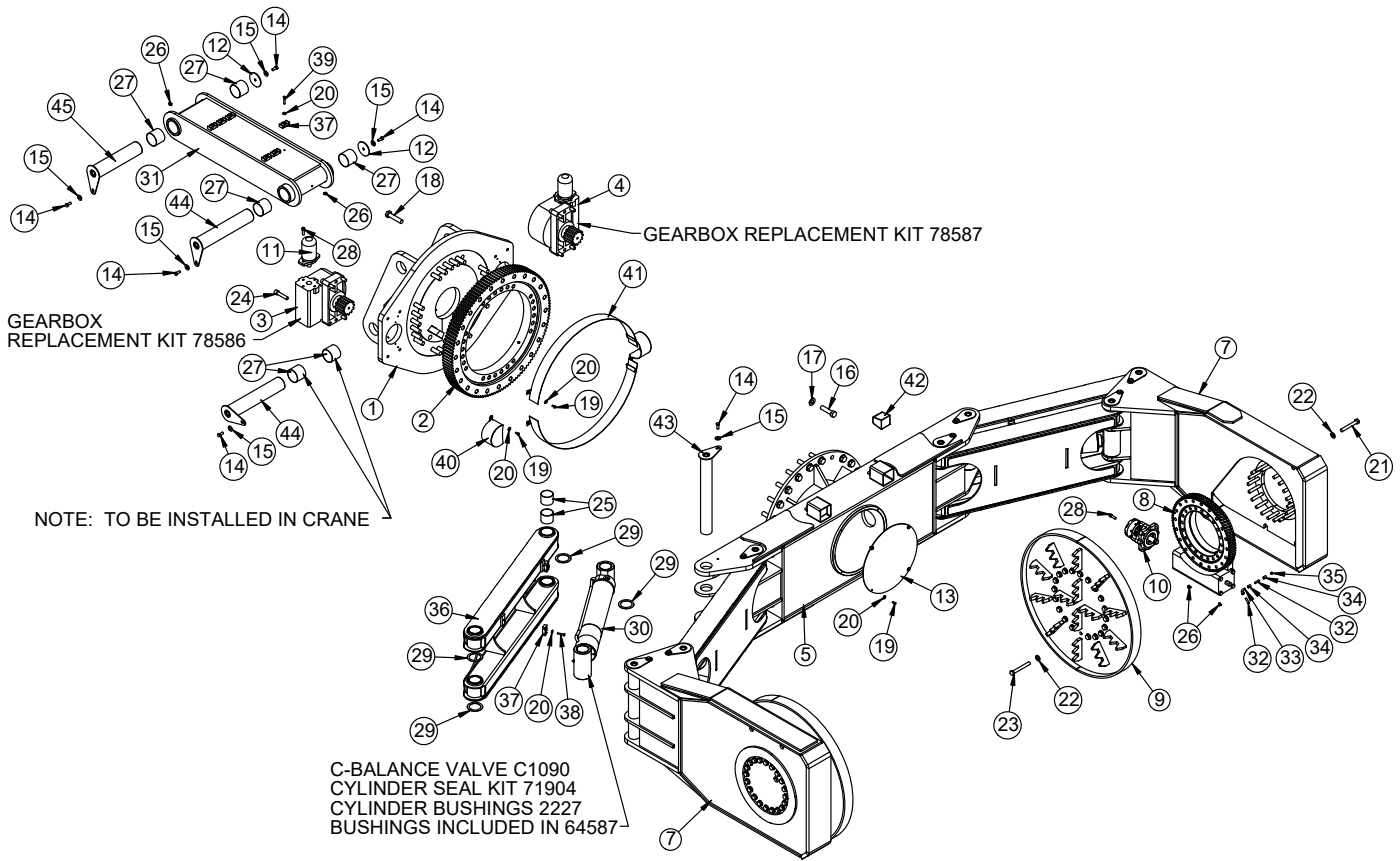
This page left intentionally blank.

Chapter 3 - Assembly Drawings

Chapter Contents

TM4110 Standard Assembly - PN 135084	16
TM4110 Standard Assembly - PN 135084 Parts List	17
TM4110 Standard Assembly - PN 130915	18
TM4110 Standard Assembly - PN 130915 Parts List	19
TM4110 Standard Assembly - PN 130915 Parts List	20

TM20165 Assembly Standard - PN 63528



TM20165 Assembly Standard - PN 63528 Parts List

PN 63528			
ITEM	PART	DESCRIPTION	QTY
1	63519	BASE TM20165	1
2	63518	BEARING TURNTABLE TM20165	1
3	6537	GEAR BOX 015-00120-1	1
4	64364	GEAR BOX 015-00120-3	1
5	62491	BODY TM20165	1
6	63523	LINK TM20165	2
7	63529	ARM TM20165	2
8	63815	BEARING SWING DRIVE 9000 170-00055-5	2
9	63668	PAD TIRE GRIPPING TM20165 CONT ROT	2
10	64365	MOTOR 9000, WHITE 500260C3120DEAAA	2
11	5311	MOTOR HYD ROSS MG140611AAAB	2
12	13315	PIN CAP 0.56X4.00X0.19 YZ	11
13	64838	COVER TUBE TM20165	1
14	498	CAP SCR 0.50-13X1.25 HHGR5	22
15	352	WASHER 0.50 USS FLAT	22
16	64851	CAP SCR 1.00-8X4.00 HHGR8	24
17	6538	WASHER 1.00 SAE FLAT YELLOW GR8	48
18	18462	CAP SCR 1.00-8X4.50 HHGR8	24
19	0420	CAP SCR 0.31-18X0.75 HHGR5	12
20	0343	WASHER 0.31 USS FLAT	22
21	64848	CAP SCR 0.75-10X5.50 HHGR8	40
22	C6219	WASHER 0.75 SAE FLAT YELLOW GR8	80
23	C1029	CAP SCR 0.75-10X6.00 HHGR8	40
24	11298	CAP SCR 0.75-10X3.50 SH	8
25	54374	BUSHING COMPOSITE FIBER 3.00X2.50	32
26	C1597	ZERK 1/8 NPT 90 DEG	6
27	18373	BUSHING BPC56DXR48 3.50X3.00	6
28	D1295	CAP SCR 0.50-13X1.50 SH	12
29	1589	MACHY WASHER 3.00ID 14GA	20
30	64587	CYLINDER 5.00X20.00	2
31	63680	LINK BASE TM20165	1
32	C2250	FTG 2-2X1.50 MP-MP NIPPLE STRAIGHT BLK	4
33	C2239	FTG 2-2 MP-FP STREET ELBOW 90	2
34	C2256	FTG CPLR PIPE 0.13	4
35	C1592	ZERK 1/8 NPT STRAIGHT	2
36	78010	LINK TM20165 OUTSIDE	2
37	8621	CLAMP HOSE/TUBE AG-3	10
38	0487	CAP SCR 0.31-18X1.75 HHGR5	4
39	0488	CAP SCR 0.31-18X2.00 HHGR5	6
40	22272	GUARD TTB TM14160B PC BLACK	2
41	64845	GEAR GUARD TM20165 PC WHITE	2
42	78431	LIGHT FLOOD LED 3.2X2.9 850LM 16W 10-30V	2

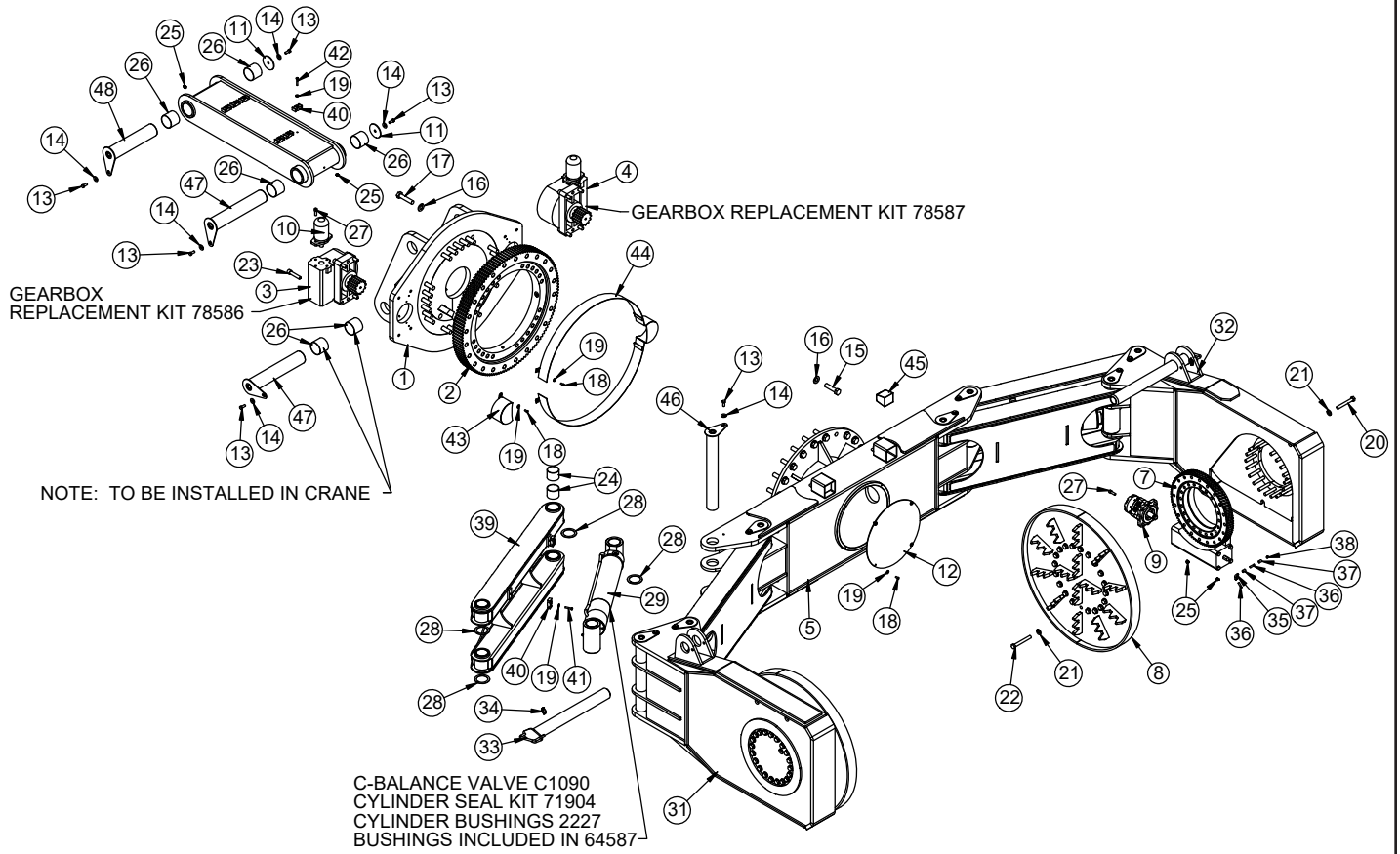
TM20165 Asm Standard - PN 63528 Parts List - Cont.

PN 63528			
ITEM	PART	DESCRIPTION	QTY
43	64591CR	PIN TEAR DROP 3.00X24.13 CR ZC	8
44	63943CR	PIN TEAR DROP 3.50X19.13 CR ZC	2
45	64849CR	PIN TEAR DROP 3.50X16.13 CR ZC	1

63528 - ITEMS NOT SHOWN		
PART	DESCRIPTION	QTY
65365	HYD KIT TM20165	1
21409	WIRE HARNESS FLOOD LIGHT TM14160	1
D0240	FTG 4-2 CPRSN-MP 90	1
D1810	TBE AIR SAEJ844 TYPE A .25 (RM)	0.67 FT
D1345	FTG 4-2 CPRSN-MP STRAIGHT	1
22161	FTG 2-2 FP-FP COUPLER STRAIGHT BRASS	1
56589	ZERK 1/8 NPT STRAIGHT LONG THREAD	1
9752	CONNECT 2 PIN SHROUD PACKARD	2
9756	CONTACT M TERM SHROUD 18-20	4
8384	CABLE SEAL 18-20 PACKARD 39000	4

This page left intentionally blank.

TM20165 Assembly w/Fallback Protection - PN 76685



TM20165 Asm w/Fallback Protection - PN 76685 Parts

PN 76685			
ITEM	PART	DESCRIPTION	QTY
1	63519	BASE TM20165	1
2	63518	BEARING TURNTABLE TM20165	1
3	6537	GEAR BOX 015-00120-1	1
4	64364	GEAR BOX 015-00120-3	1
5	62491	BODY TM20165	1
6	63523	LINK TM20165	2
7	63815	BEARING SWING DRIVE 9000 170-00055-5	2
8	63668	PAD TIRE GRIPPING TM20165 CONT ROT	2
9	64365	MOTOR 9000, WHITE 500260C3120DEAAA	2
10	5311	MOTOR HYD ROSS MG140611AAAB	2
11	13315	PIN CAP 0.56X4.00X0.19 YZ	11
12	64838	COVER TUBE TM20165	1
13	0498	CAP SCR 0.50-13X1.25 HHGR5	22
14	0352	WASHER 0.50 USS FLAT	22
15	64851	CAP SCR 1.00-8X4.00 HHGR8	24
16	6538	WASHER 1.00 SAE FLAT YELLOW GR8	48
17	18462	CAP SCR 1.00-8X4.50 HHGR8	24
18	0420	CAP SCR 0.31-18X0.75 HHGR5	12
19	0343	WASHER 0.31 USS FLAT	22
20	64848	CAP SCR 0.75-10X5.50 HHGR8	40
21	C6219	WASHER 0.75 SAE FLAT YELLOW GR8	80
22	C1029	CAP SCR 0.75-10X6.00 HHGR8	40
23	11298	CAP SCR 0.75-10X3.50 SH	8
24	54374	BUSHING COMPOSITE FIBER 3.00X2.50	32
25	C1597	ZERK 1/8 NPT 90 DEG	6
26	18373	BUSHING BPC56DXR48 3.50X3.00	6
27	D1295	CAP SCR 0.50-13X1.50 SH	12
28	1589	MACHY WASHER 3.00ID 14GA	20
29	64587	CYLINDER 5.00X20.00	2
30	63680	LINK BASE TM20165	1
31	76686	ARM TM20165 W/FALLBACK RH	1
32	76687	ARM TM20165 W/FALLBACK LH	1
33	53056	WELDMENT PIN FALLBACK TM16160	2
34	5753	PIN 0.19X1.56 LYNCH	2
35	C2239	FTG 2-2 MP-FP STREET ELBOW 90	2
36	C2250	FTG 2-2X1.50 MP-MP NIPPLE STRAIGHT BLK	4
37	C2256	FTG CPLR PIPE 0.13	4
38	C1592	ZERK 1/8 NPT STRAIGHT	2
39	78010	LINK TM20165 OUTSIDE	2
40	8621	CLAMP HOSE/TUBE AG-3	10
41	0487	CAP SCR 0.31-18X1.75 HHGR5	4
42	0488	CAP SCR 0.31-18X2.00 HHGR5	6

TM20165 Asm w/Fallback Protection - PN 76685 Parts

PN 76685

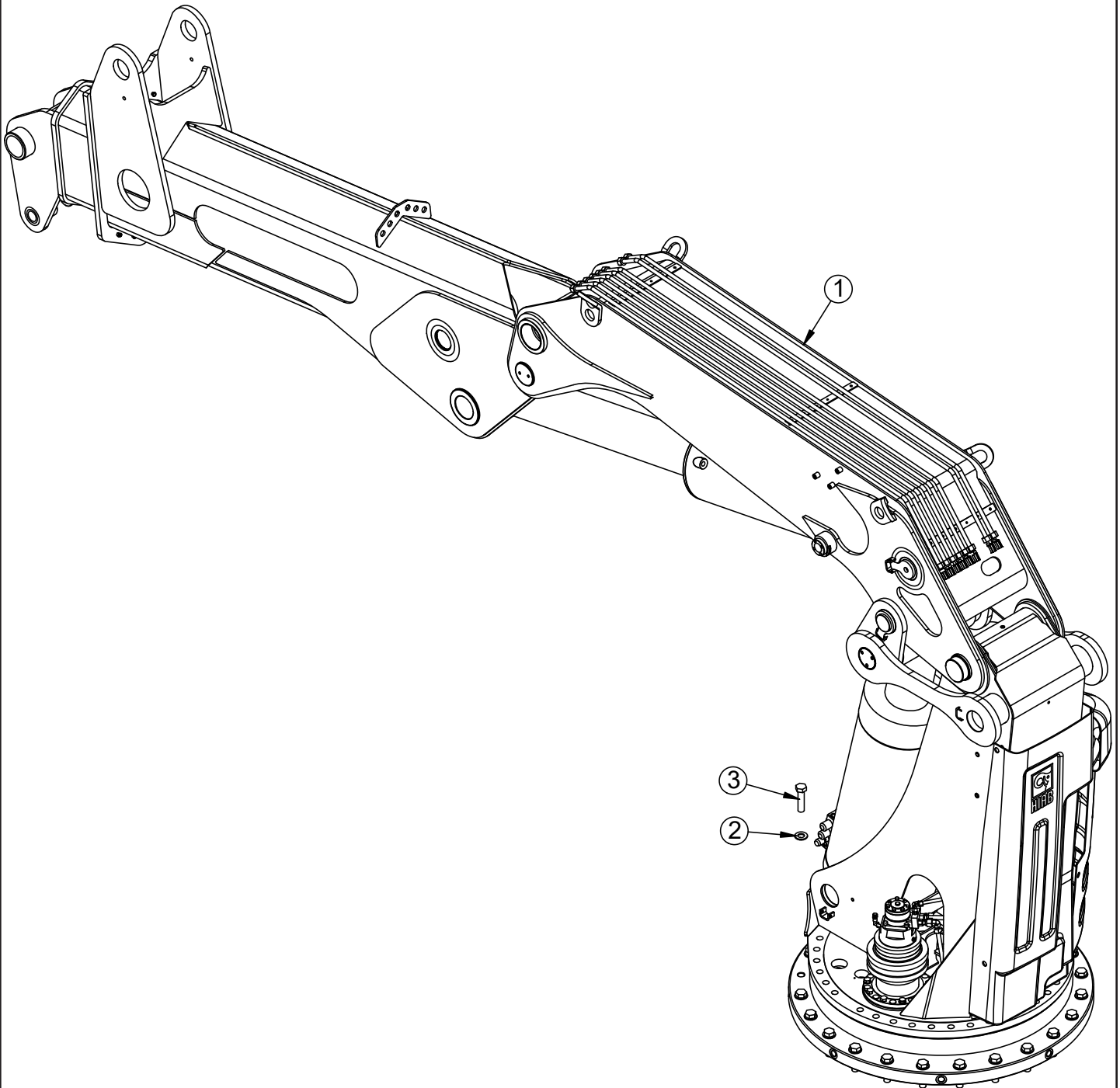
ITEM	PART	DESCRIPTION	QTY
43	22272	GUARD TTB TM14160B PC BLACK	2
44	64845	GEAR GUARD TM20165 PC WHITE	2
45	78431	LIGHT FLOOD LED 3.2X2.9 850LM 16W 10-30V	2
46	64591CR	PIN TEAR DROP 3.00X24.13 CR ZC	8
47	63943CR	PIN TEAR DROP 3.50X19.13 CR ZC	2
48	64849CR	PIN TEAR DROP 3.50X16.13 CR ZC	1

76685 - ITEMS NOT SHOWN

PART	DESCRIPTION	QTY
65365	HYD KIT TM20165	1
21409	WIRE HARNESS FLOOD LIGHT TM14160	1
D0240	FTG 4-2 CPRSN-MP 90	1
D1810	TBE AIR SAEJ844 TYPE A .25 (RM)	0.67 FT
D1345	FTG 4-2 CPRSN-MP STRAIGHT	1
22161	FTG 2-2 FP-FP COUPLER STRAIGHT BRASS	1
56589	ZERK 1/8 NPT STRAIGHT LONG THREAD	1
9752	CONNECT 2 PIN SHROUD PACKARD	2
9756	CONTACT M TERM SHROUD 18-20	4
8384	CABLE SEAL 18-20 PACKARD 39000	4

This page left intentionally blank.

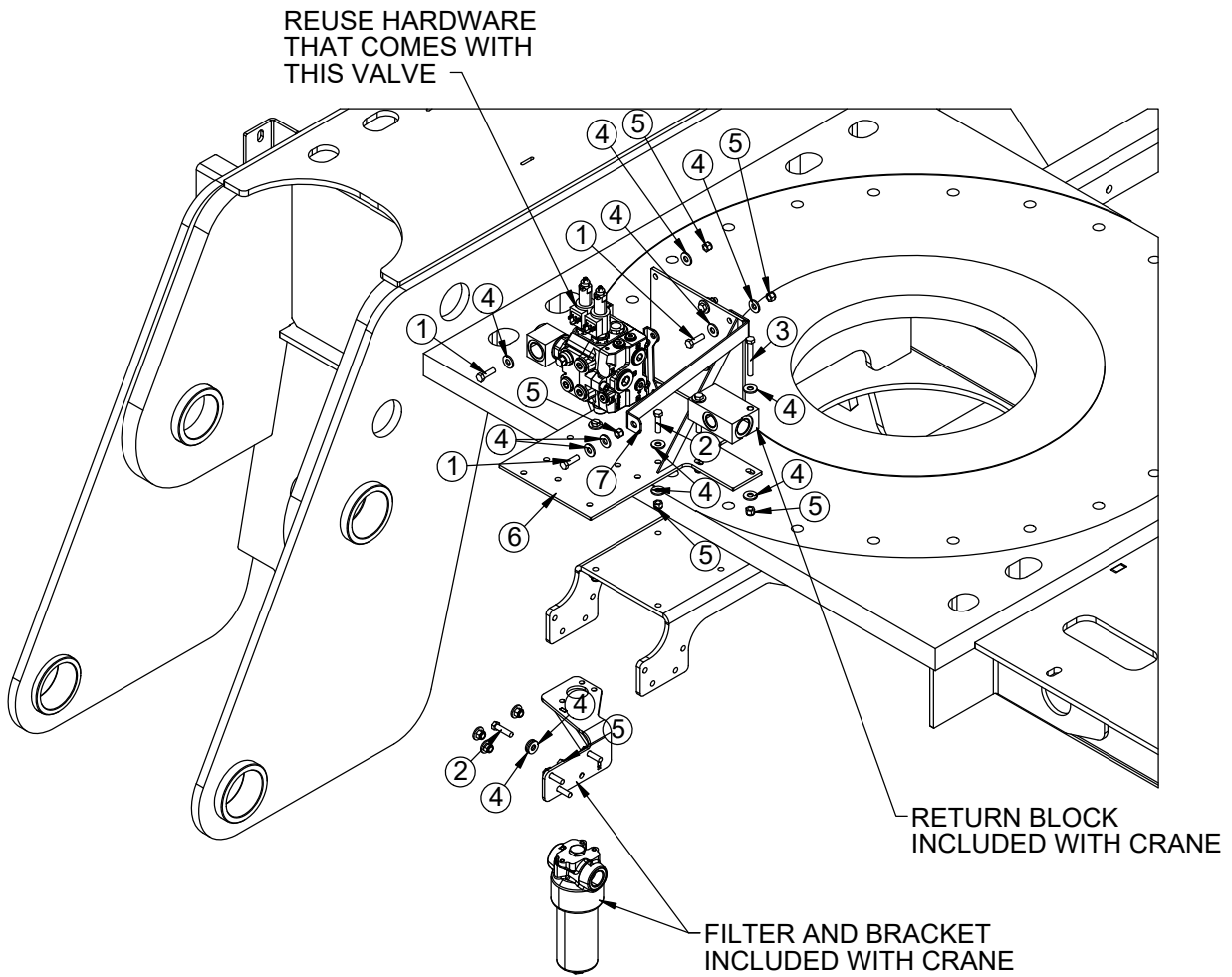
TM20165 Crane Assembly - PN 134694



PN 134694

ITEM	PART	DESCRIPTION	QTY
1	134127	CRANE HIAB 1055	1
2	65358	WASHER 1.00 SAE FLAT YELLOW GR9	24
3	65357	CAP SCR 1.00-8X4.00 HHGR9	24

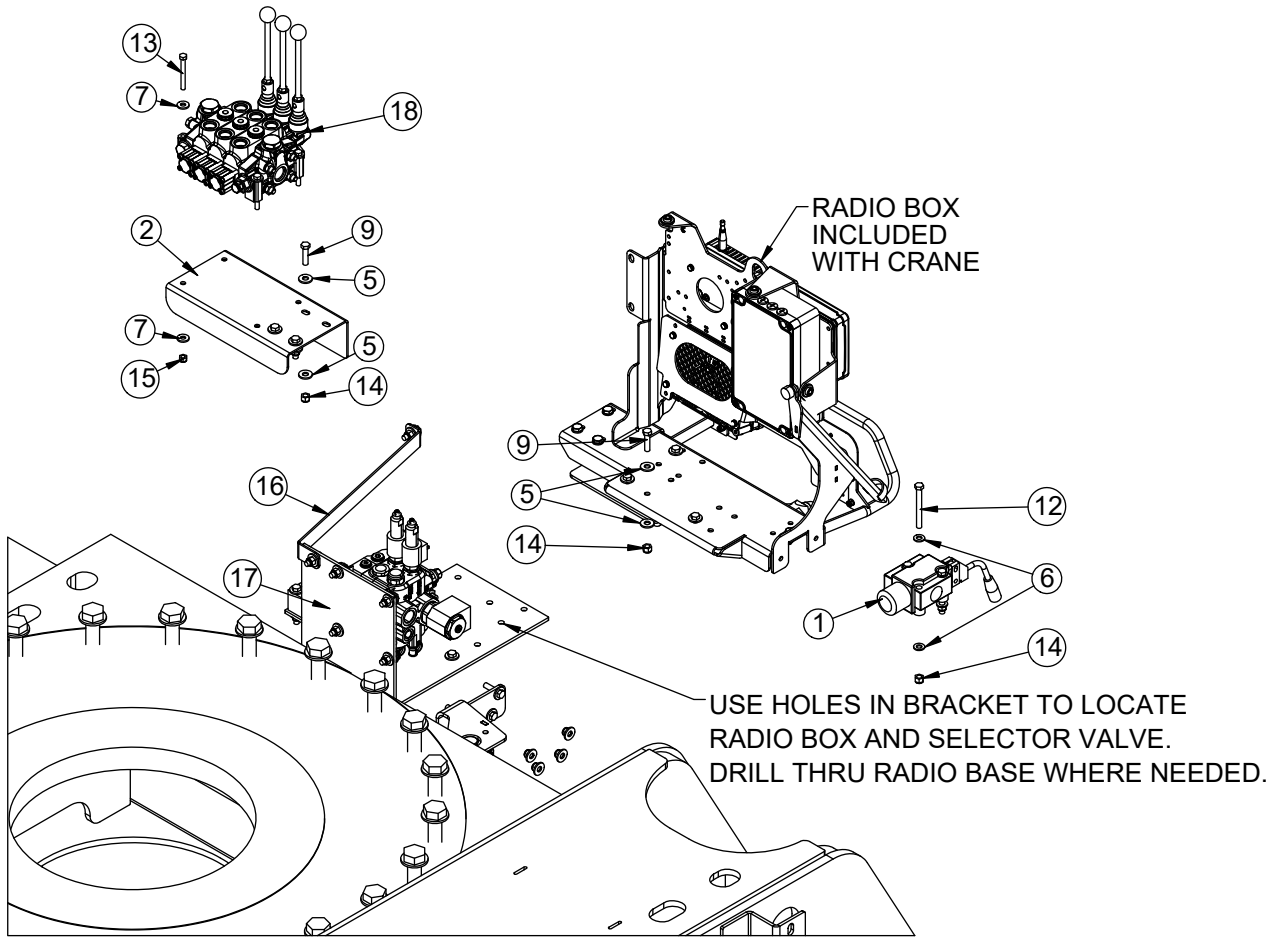
TM20165 Crane Assembly - PN 134694 - Continued



PN 134694

ITEM	PART	DESCRIPTION	QTY
1	0335	CAP SCR 0.38-16X1.25 HHGR5	10
2	0345	CAP SCR 0.38-16X1.50 HHGR5	15
3	C0949	CAP SCR 0.38-16X3.00 HHGR5	2
4	0346	WASHER 0.38 USS FLAT	54
5	0347	NUT 0.38-16 HHGR5 NYLOC	30
6	138337	BRKT WLDMT LOAD SENSE VALVE 65000 V3	1
7	138340	STRAP RADIO STABILIZING 65000 V3	1

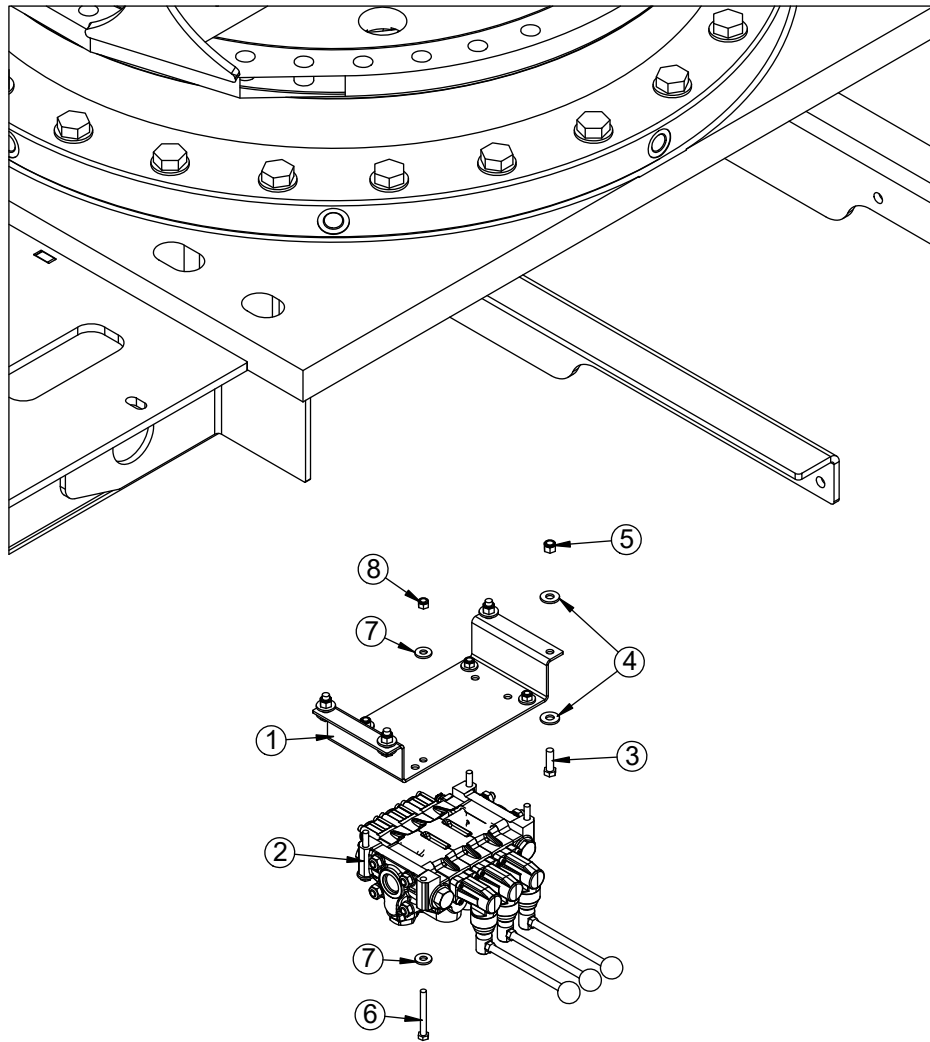
TM20165 Crane Assembly - PN 134694 - Continued



PN 134694

ITEM	PART	DESCRIPTION	QTY
1	81025	VALVE DIVERTER HIAB TM20165	1
2	138336	BRACKET VB MNT 65000 OUTRIGGER SS V3	1
3	137779	VB STABILIZER TM20164	1
4	65358	WASHER 1.00 SAE FLAT YELLOW GR9	24
5	0346	WASHER 0.38 USS FLAT	54
6	C6353	WASHER 0.38 SAE FLAT YELLOW GR8	6
7	0343	WASHER 0.31 USS FLAT	16
8	65357	CAP SCR 1.00-8X4.00 HHGR9	24
9	0345	CAP SCR 0.38-16X1.50 HHGR5	15
10	0335	CAP SCR 0.38-16X1.25 HHGR5	10
11	C0949	CAP SCR 0.38-16X3.00 HHGR5	2
12	0531	CAP SCR 0.38-16X3.50 HHGR5	3
13	C0929	CAP SCR 0.31-18X2.75 HHGR5	8
14	0347	NUT 0.38-16 HHGR5 NYLOC	30
15	0342	NUT 0.31-18 HHGR5 NYLOC	8
16	138340	STRAP RADIO STABILIZING 65000 V3	1
17	138337	BRKT WLDMT LOAD SENSE VALVE 65000 V3	1
18	137779	VB STABILIZER TM20164	1

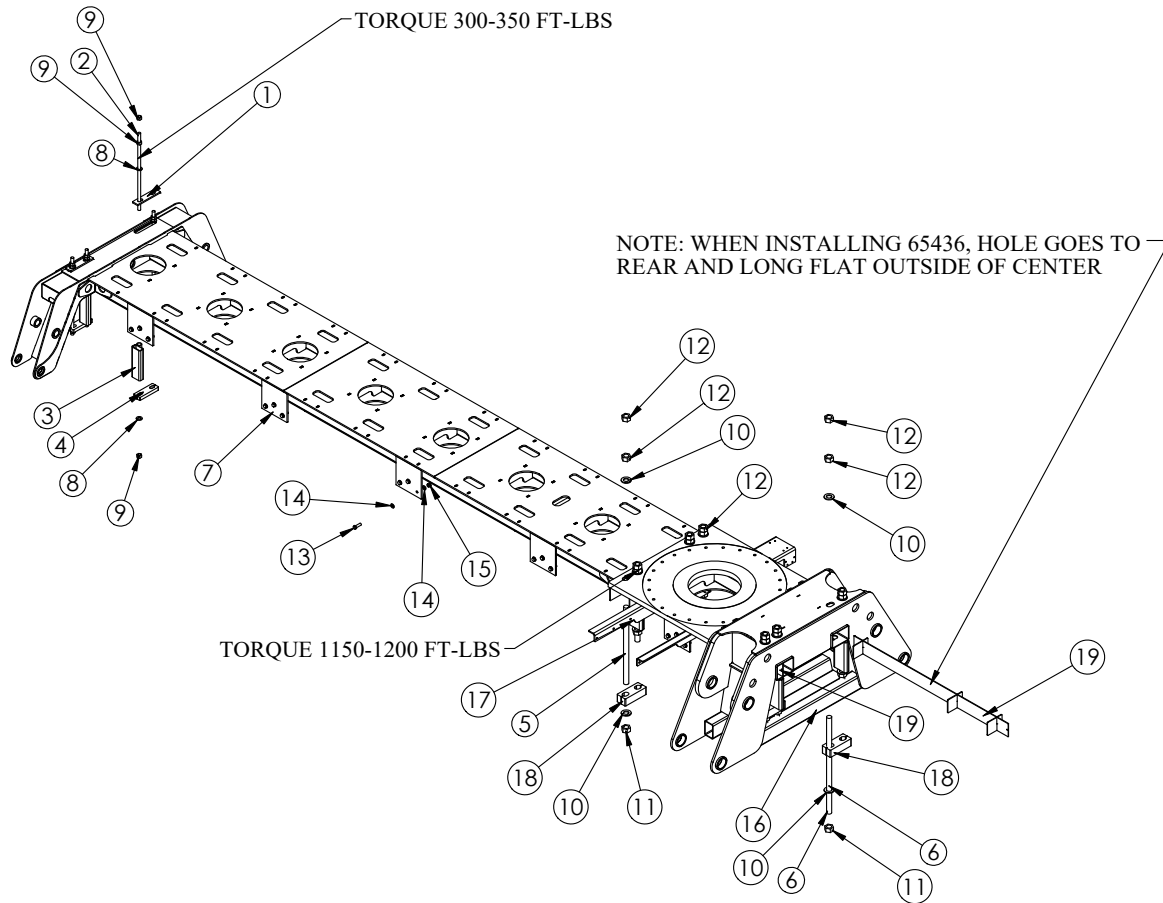
TM20165 Crane Assembly - PN 134694 - Continued



PN 134694

ITEM	PART	DESCRIPTION	QTY
1	80992	BRACKET VB MNT 65000 OUTRIGGER CS	1
2	137779	VB STABILIZER TM20164	1
3	0335	CAP SCR 0.38-16X1.25 HHGR5	10
4	0346	WASHER 0.38 USS FLAT	54
5	0347	NUT 0.38-16 HHGR5 NYLOC	30
6	C0929	CAP SCR 0.31-18X2.75 HHGR5	8
7	0343	WASHER 0.31 USS FLAT	16
8	0342	NUT 0.31-18 HHGR5 NYLOC	8

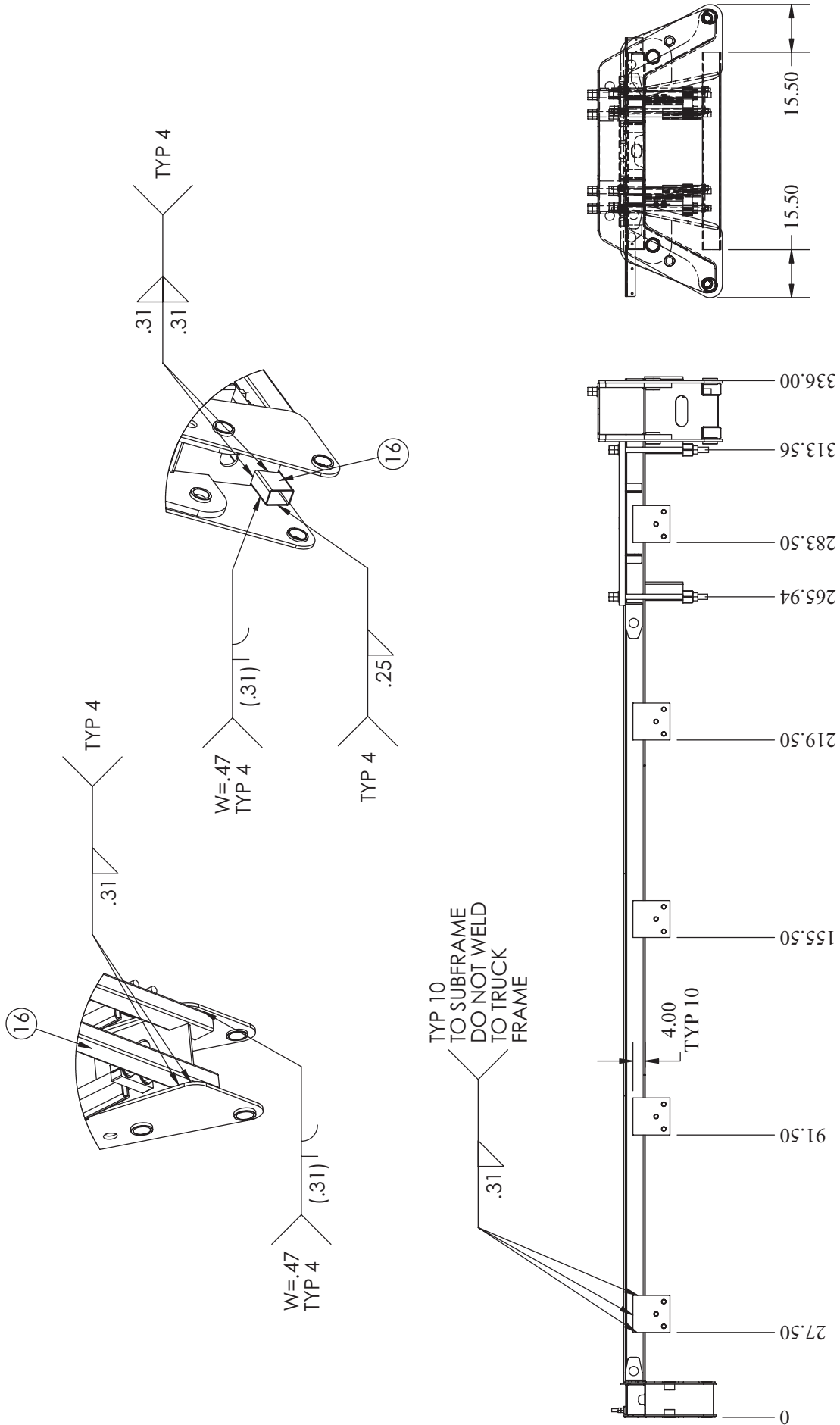
Mounting Kit Subframe Assembly PN 66349



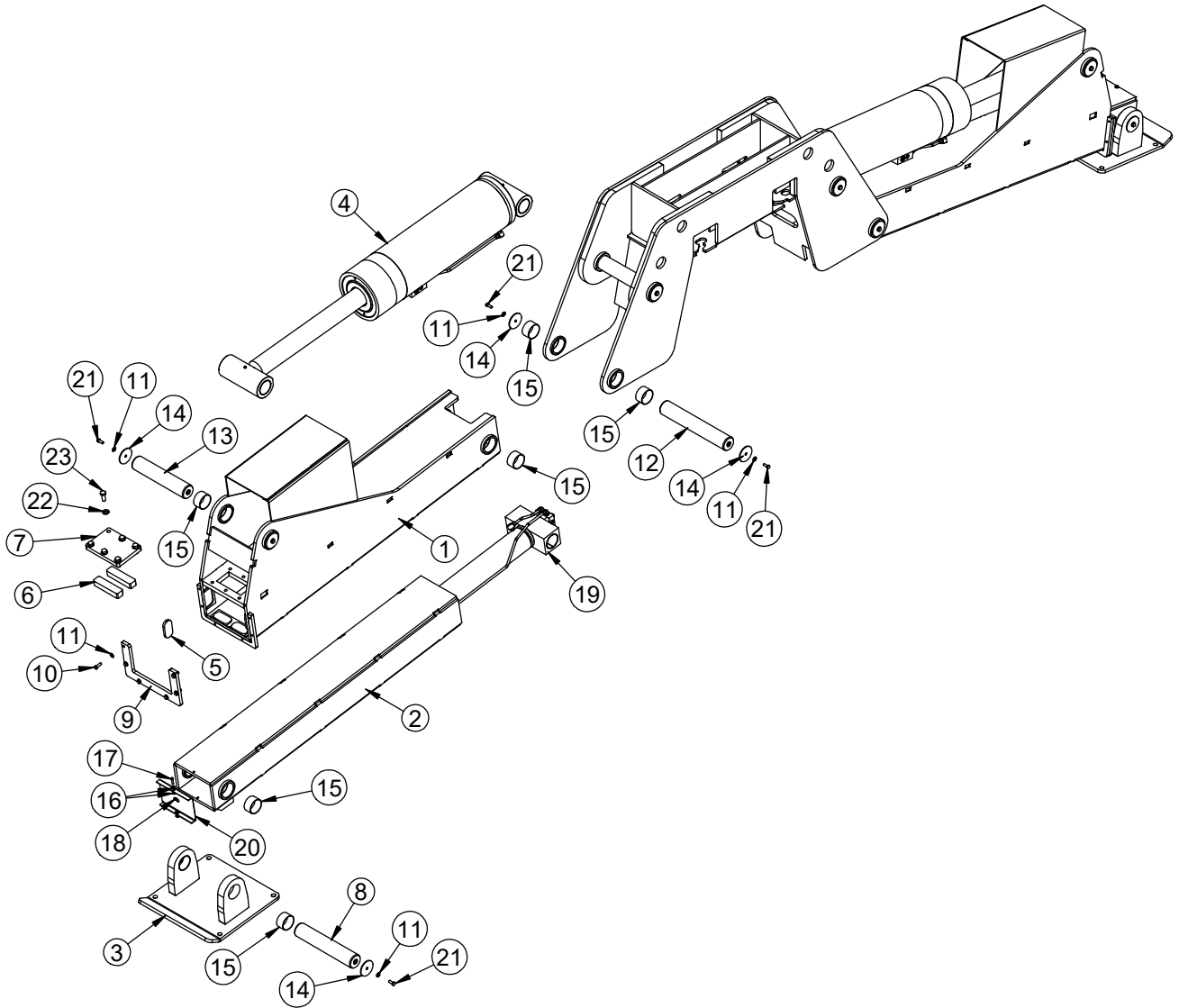
PN 65349

ITEM	PART	DESCRIPTION	QTY
1	58660	PLATE CRANE MOUNTING 1.00 IN RODS PC BLACK	2
2	58516	TIE DOWN ROD 1.00-8X28.50	4
3	58658	MTG BLOCK HIAB 122 PC BLACK	2
4	65350	TIE DOWN ROD 1.75-5X32.00	8
5	65354	TIE DOWN ROD 1.75-5X40.00	4
6	65433	SHEAR PLATE 0.50X12.00X12.00	10
7	6538	WASHER 1.00 SAE FLAT YELLOW GR8	8
8	61558	NUT 1.00-8 HHGR8	12
9	65098	WASHER 1.75 USS FLAT	24
10	65100	NUT 1.75-5 HHGR8 TOP LOCKING	12
11	65099	NUT 1.75-5 HHGR8	24
12	58681	CAP SCR 0.75-10X2.50 HHGR8	30
13	C6219	WASHER 0.75 SAE FLAT YELLOW GR8	60
14	C0538	NUT 0.75-10 HHGR8 NYLOC	30
15	64982	TUBE 6.00X4.00X0.25WX64.00 100,000 PSI	2
16	65436	BRKT TUBE REINF WLDMT 65000	2
17	8202	FRAME SUPPORT 15000 CRANE PC BLACK	2
18	65352	MTG BLOCK 65000 PC BLACK	6
19	65356	FRAME SUPPORT 65000 PC BLACK	6

Mounting Kit Subframe Assembly PN 65349 - Continued



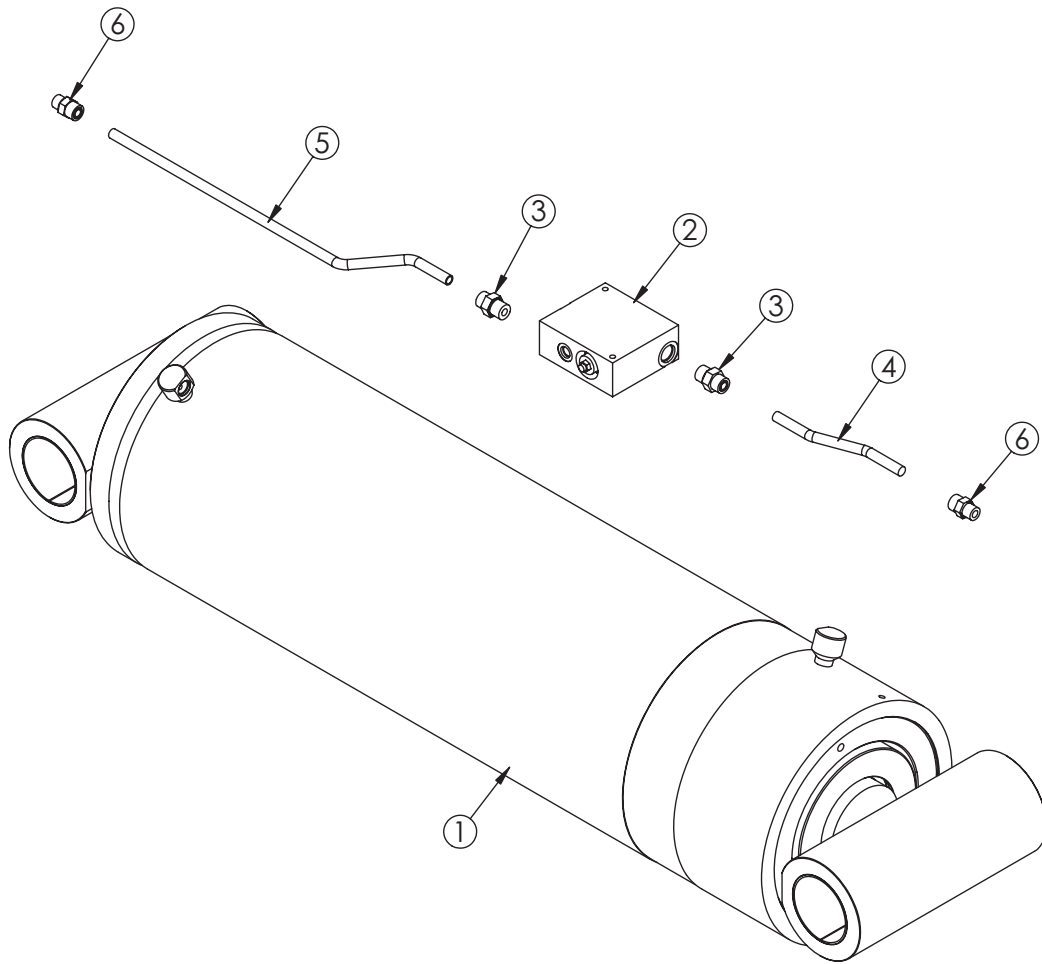
Crane Base Stabilizer Assembly - PN 65107



Crane Base Stabilizer Assembly - PN 65107 Parts List

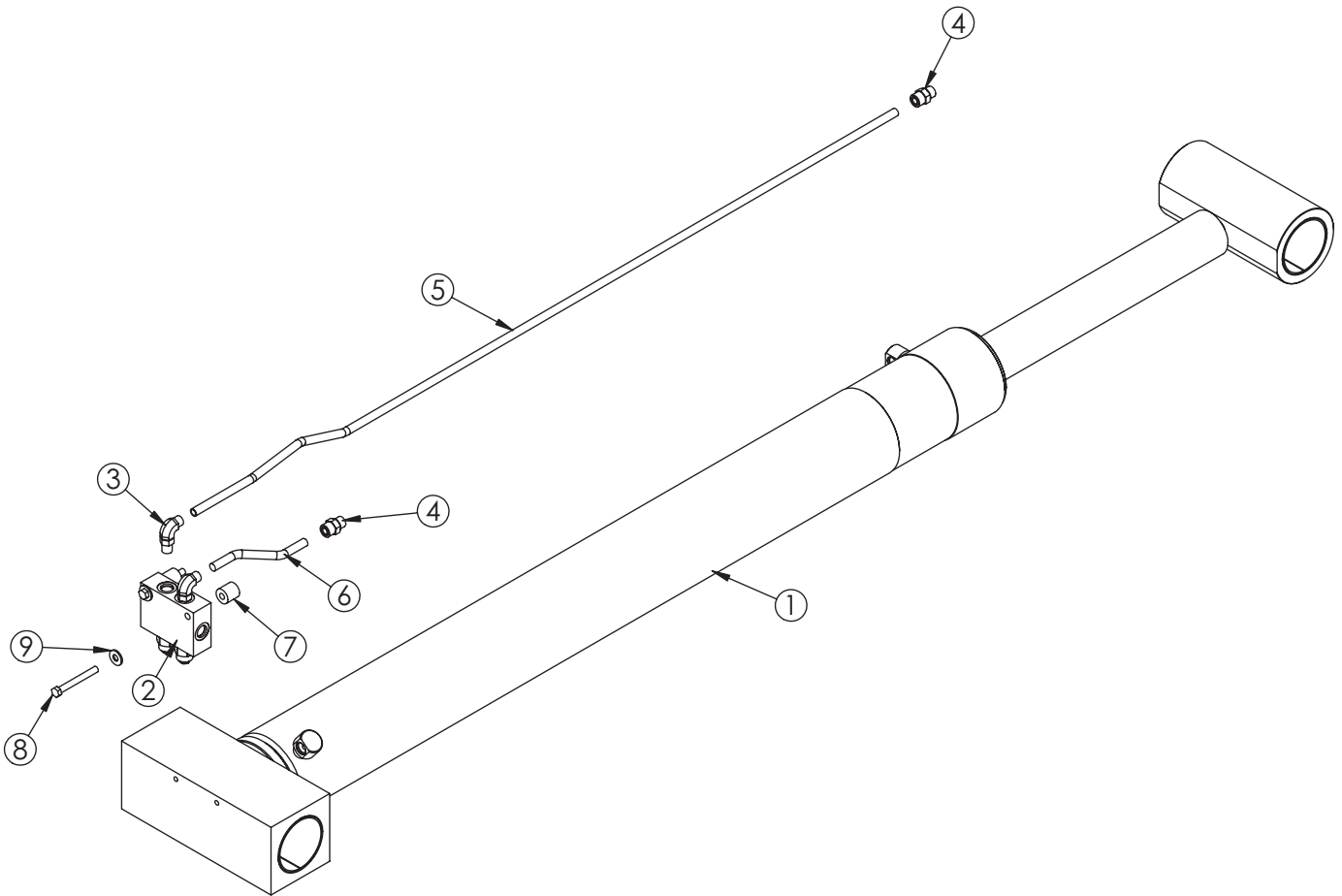
PN 65107			
ITEM	PART	DESCRIPTION	QTY
1	64369	HOUSING STABILIZER LEG 65000	2
2	64372	LEG STABILIZER EXT 65000	2
3	64964	PAD STABILIZER 65000	2
4	64367	CYLINDER ASM STABILIZER 65000	2
5	38739	WEAR PAD SLIDER65	8
6	40455	WEAR PAD 2.00X8.00X1.50	4
7	64971	PLATE WEAR PAD COVER 65000 PC WHITE	2
8	65103CR	PIN 3.50X18.69 D&T ZC	2
9	64974	PLATE WEAR PAD COVER STABILIZER 65000 PC WHITE	2
10	10548	CAP SCR 0.50-13X1.50 HHGR8	12
11	D0790	WASHER 0.50 SAE FLAT YELLOW GR8	28
12	65101CR	PIN 3.50X21.38 D&T ZC	4
13	65102CR	PIN 3.50X17.13 D&T ZC	2
14	13315	PIN CAP 0.56X4.00X0.19 YZ	16
15	64980	BUSHING COMPOSITE FIBER 3.50X2.00	24
16	0343	WASHER 0.31 USS FLAT	8
17	0486	CAP SCR 0.31-18X1.50 HHGR5	4
18	0342	NUT 0.31-18 HHGR5 NYLOC	4
19	64970	CYLINDER ASM EXT 65000	2
20	65934	COVER STABILIZER LEG TM20165	2
21	10666	CAP SCR 0.50-13X1.25 HHGR8	16
22	C6219	WASHER 0.75 SAE FLAT YELLOW GR8	12
23	4543	CAP SCR 0.75-10X2.00 HHGR8	12

Crane Base Stabilizer Cylinder Assembly - PN 64367



PN 64367			
ITEM	PART	DESCRIPTION	QTY
1	64368	CYLIDNER 11.00X34.00	1
2	15995	MANIFOLD ASM DUAL T2A 5000PSI	1
3	C2252	FTG 8-10 MFS-MORB STRAIGHT	2
4	54416	TUBE ASM 0.50X7.56 17000 YZ	1
5	64972	TUBE ASM 0.50X20.80 ZC	1
6	1554	FTG 8-8 MFS-MORB STRAIGHT	2

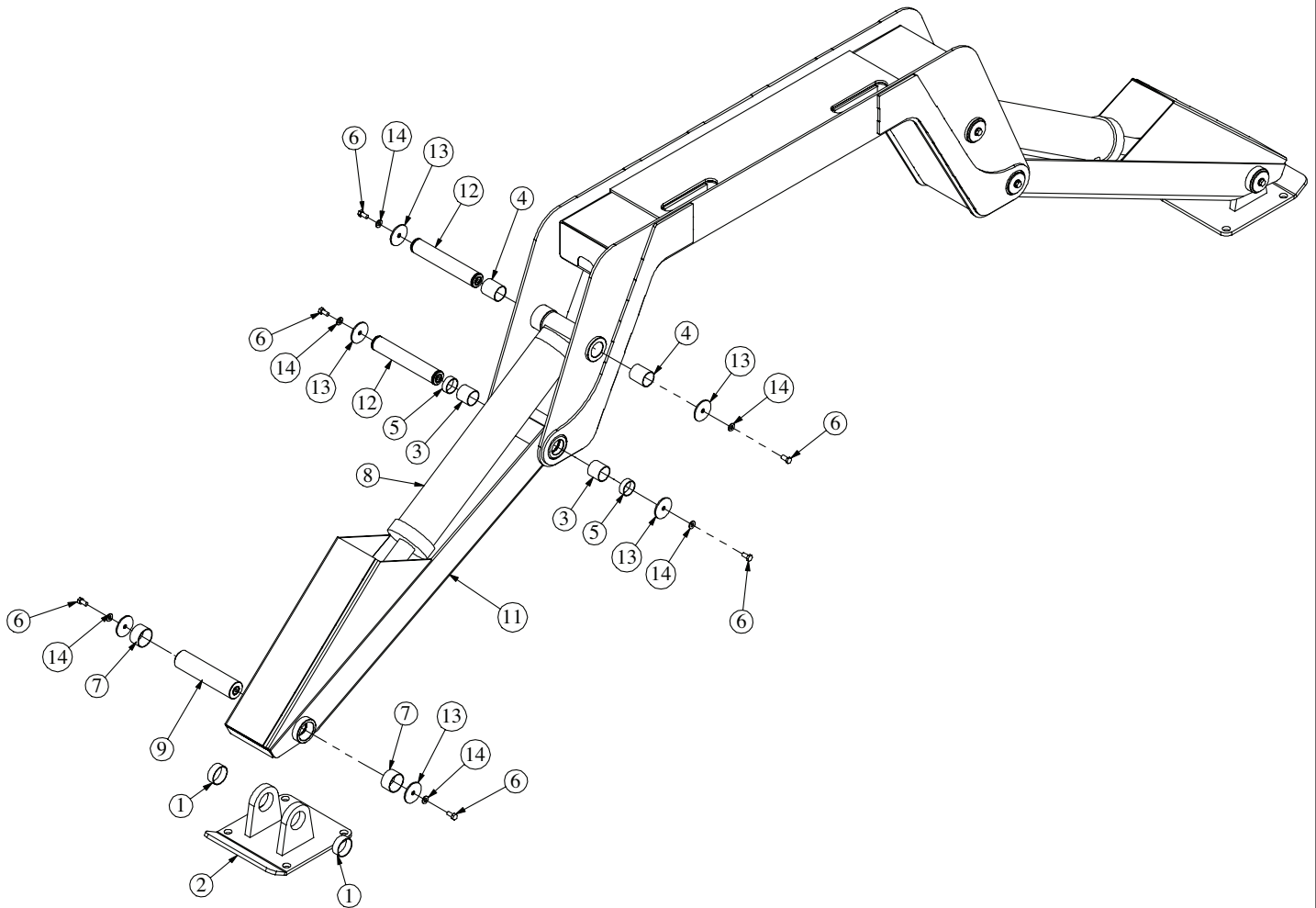
Crane Base Stabilizer Ext. Cylinder Asm - PN 64970



PN 64970

ITEM	PART	DESCRIPTION	QTY
1	64599	CYLINDER 5.00X43.00	1
2	64978	MANIFOLD ASM DUAL T2A 5000PSI YAJ BLOCK	1
3	1556	FTG 8-8 MFS-MAORB 90	2
4	1554	FTG 8-8 MFS-MORB STRAIGHT	2
5	64973	TUBE ASM 0.50X63.06 ZC	1
6	16256	TUBE ASM 0.50X6.25 YZ	1
7	12936	SPACER1.00 X 1.00OD X .406ID	2
8	C0950	CAP SCR 0.38-16X3.25 HHGR5	2
9	0346	WASHER 0.38 USS FLAT	2

Non-Crane Base Stabilizer Assembly - PN 64262

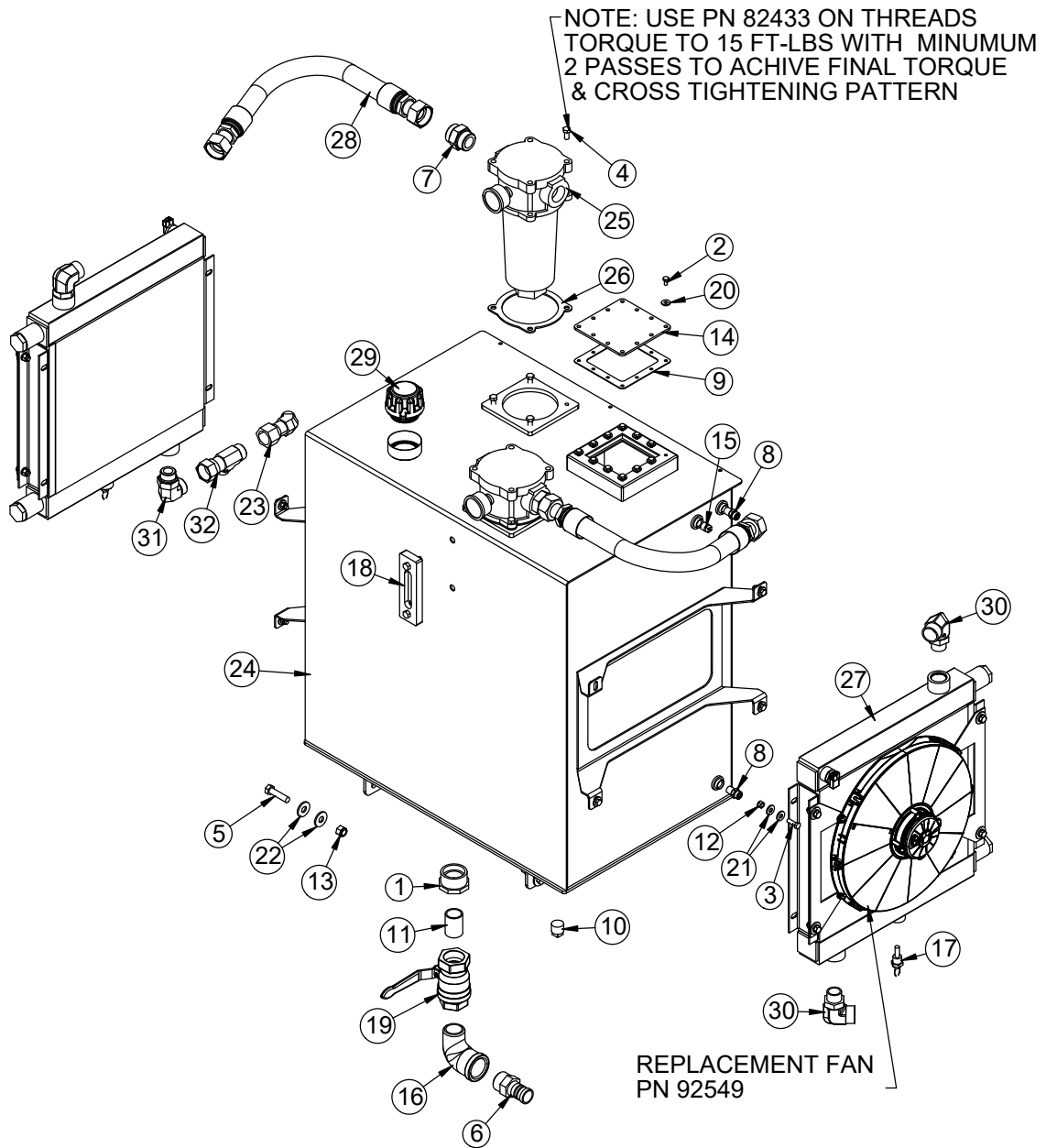


PN 64262

ITEM	PART	DESCRIPTION	QTY
1	13343	BUSHING BPC40DXR16 2.50X1.00	4
2	66282	OUTRIGGER PAD 9000/TM20165	2
3	4381	BUSHING BPC32DXR32 2.00X2.00	4
4	4379	BUSHING BPC32DXR40 2.00X2.50	4
5	94747	BUSHING BPC32DXR16 2.00X0.75	4
6	10172	CAP SCR 0.50-13X1.00 HHGR8	12
7	13817	BUSHING BPC40DXR24 2.50X1.50	4
8	66283	CYLINDER 5.00X24.50 WHITE	2
9	54322CR	PIN 2.50X10.38 D&T ZC	2
11	66281	OUTRIGGER LEG WLDMT 9000/TM20165	2
12	9710CR	PIN 2.00X11.69 SR/D&T	4
13	5145	PIN CAP 0.56X3.00X0.19 YZ	12
14	D0790	WASHER 0.50 SAE FLAT YELLOW GR8	12

This page left intentionally blank.

Reservoir Assembly - PN 86517



Reservoir Assembly - PN 86517 Parts List

ITEM	PART	DESCRIPTION	QTY
1	60782	BUSHING 2.00X1.50 BLK	2
2	0478	CAP SCR 0.25-20X0.50 HHGR5	12
3	C0922	CAP SCR 0.31-18X1.00 HHGR5	8
4	0492	CAP SCR 0.38-16X0.75 HHGR5	8
5	0501	CAP SCR 0.50-13X2.00 HHGR5	6
6	37541	FTG 24-24 MP-HB STRAIGHT	2
7	19242	FTG 20-20 MFS-MORB STRAIGHT	2
8	0554	FTG 6-6 MFS-MP STRAIGHT	2
9	11149	GASKET ARCTIC FOX HEATER #A-611	1
10	C2126	PLUG 0.75 NPT SQ HD MAGNETIC	1
11	C1060	FTG 24-24XCLOSE MP-MP NIPPLE STRAIGHT BLK	2
12	0342	NUT 0.31-18 HHGR5 NYLOC	8
13	C6106	NUT 0.50-13 HHGR5 NYLOC	6
14	11442	PLATE COVER TANK HEATER FLANGE	1
15	C4841	PLUG 0.38 NPT SQ HD BLK	1
16	4195	FTG 24-24 MP-FP STREET ELBOW 90 BLK	2
17	54393	SWITCH TEMP NC TT-F5B-100R-MP	2
18	15463	THERMO SIGHT GAUGE ZINGA SG-O5-A-T-N	1
19	37539	VALVE BALL 1.50	2
20	0340	WASHER 0.25 USS FLAT	12
21	0343	WASHER 0.31 USS FLAT	16
22	0352	WASHER 0.50 USS FLAT	12
23	65672	FTG 16-16 MFS-FFSS 45	1
24	86518	RSRVR 80GAL V2 65000	1
25	85928	FILTER TANK TOP 20 FORB	2
26	58396	GASKET RG-11 TANK TOP FILTER	2
27	85790	COOLER OIL MAR-32	2
28	51294	HOSE 1.25(200PSI)-20FFSS SHORT-20FFSS SHORT-20CL	2
29	81018	CAP FILL NO RELIEF ZINGA THREADED	1
30	51275	FTG 20-16 MFS-MAORB 90	3
31	59959	FTG 16-16 MFS-MAORB 90	1
32	60394	FTG 16-16-16 MFS-FFSS-MFS RUN TEE	1



Subject to Change without Notification.
© 2024 Stellar Industries, Inc.