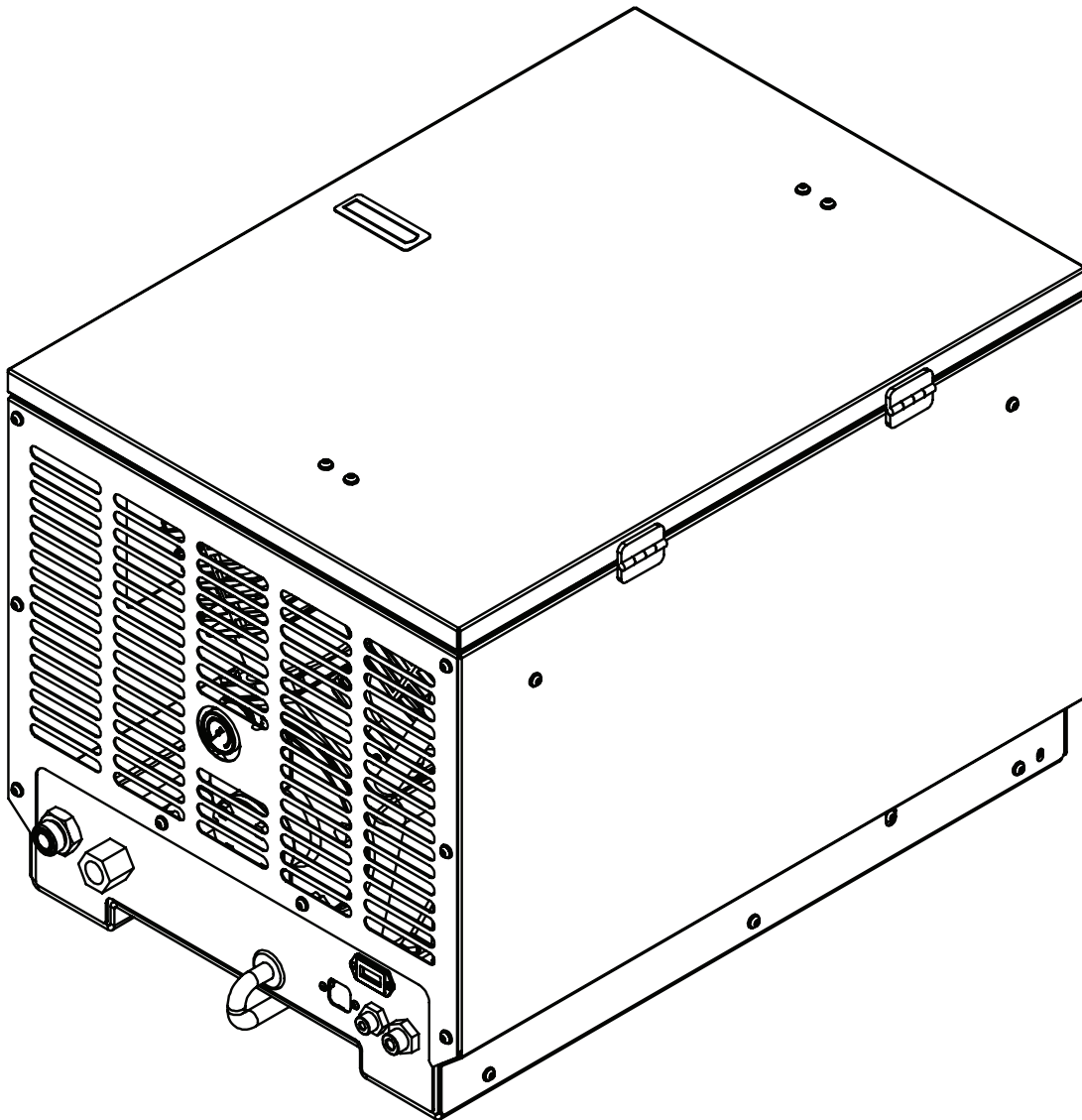




Model 70P Single-Stage Piston Compressor Manual

Specifications • Installation • Assembly



Stellar Industries, Inc.
740 North State Street
PO Box 169
Garner, IA 50438
800-392-3015

www.stellarindustries.com

Subject to Change without Notification.
© 2012 Stellar Industries

Rev 1
PN 92626

P65 Warning / Serial Tag / Cold Weather

WARNING

Operating, maintaining, and servicing a Stellar product may expose you to chemicals including, but not limited to, engine exhaust, carbon monoxide, phthalates, and lead. These chemicals are known to the State of California to cause cancer and birth defects (or other reproductive harm). To keep your exposure to a minimum, be sure to avoid breathing exhaust and service your Stellar product in a well-ventilated area while wearing gloves or washing your hands frequently. For more information, go to www.P65Warnings.ca.gov/passenger-vehicle.



www.p65warnings.ca.gov

NOTICE

Cold Weather Performance

Although clear data on cold weather performance from every steel manufacturer is not available for all types and thicknesses of steel, Stellar Industries is confident that the weldments on our products will operate to 100% of their intended purpose to temperatures down to -40° F / C.

It is recommended if Stellar manufactured equipment needs to be used in temperatures below -40° F / C, the operator should pull the unit into a climate-controlled area and allow the weldments to warm up to and then maintain a temperature above this level.


	MODEL <input type="text"/>
SERIAL NO. <input type="text"/>	
PATENT / IP INFORMATION: www.stellarindustries.com/ip	DATE <input type="text"/>
MADE IN THE USA by the Employee Owners of Stellar Industries PN 112060	

Table of Contents

Introduction	iv
Chapter 1 - Specifications	1
Chapter 2 - Installation.....	3
Component Installation	3
Component Installation, continued.....	4
70P Electrical Schematic	5
Hydraulic System	6
Air System.....	6
Compressor Pressure Switch.....	7
Typical Hydraulic Circuit for Single-Section Pump	8
Typical Hydraulic Circuit for Tandem (Two-Part) Pump	9
Typical Hyd. Circuit for Compressor with Aux. Cooler.....	10
Chapter 3 - Assembly Drawings.....	11
70P Case Assembly - PN 70738.....	11
70P Assembly Drawing - PN 70734	12
SUH-132 Compressor Assembly	14
Crankcase Group (Straight Shaft).....	15
Cylinder Group	16
Head Group.....	17
Head Options	18
Flywheel Options.....	19

For Technical Questions, Information, Parts, or Warranty, Call Toll-Free at

800-321-3741

Hours: Monday - Friday, 8:00 a.m. - 5:00 p.m. CST

Or email at the following addresses:

Technical Questions, and Information:

service@stellarindustries.com

Order Parts:

parts@stellarindustries.com

Warranty Information:

warranty@stellarindustries.com

Introduction

Stellar Industries® Air Compressors are designed to provide safe and dependable service for a variety of operations. With proper use and maintenance, these air compressors will operate at peak performance for many years.

To promote this longevity, carefully study the information contained in this manual before putting the equipment into service. Though it is not intended to be a training manual for beginners, this manual should provide solid guidelines for the safe and proper usage of the air compressor.

Once you feel comfortable with the material contained in this manual, strive to exercise your knowledge as you safely operate and maintain the air compressor. This process is vital to the proper use of the unit.

A few notes on this manual:

A copy of this manual is provided with every air compressor and can be found in the hard plastic manual case that is installed on the chassis. A copy of this manual shall remain with the air compressor at all times.

Throughout the manual, three signal words will be used to bring attention to important items:

A NOTICE signal word indicates a practice not related to physical injury.

NOTICE

A WARNING signal word indicates a hazardous situation which, if not avoided, could result in death or serious injury.

⚠ WARNING

A DANGER signal word indicates a hazardous situation which, if not avoided, will result in death or serious injury.

⚠ DANGER

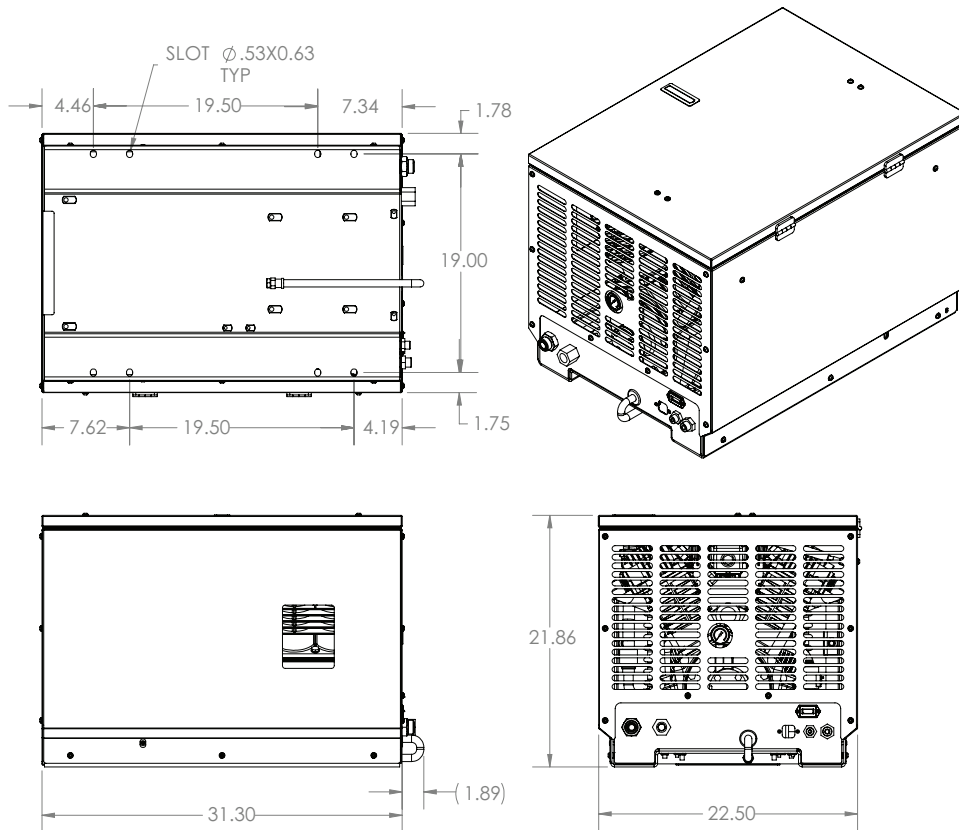
Information contained within this manual does not cover all maintenance, operating, or repair instructions pertinent to all possible situations. Please be aware that some sections of this manual contain information pertaining to Stellar Industries® manufactured air compressors in general and may or may not apply to your specific model.

This manual is not binding. Stellar Industries reserves the right to change, at any time, any or all of the items, components, and parts deemed necessary for product improvement or commercial/production purposes. This right is kept with no requirement or obligation for immediate mandatory updating of this manual.

In closing:

If more information is required or technical assistance is needed, or if you feel that any part of this manual is unclear or incorrect, please contact the Stellar Industries Customer Service Department by phone at 800-392-3015 or email at service@stellarindustries.com.

Chapter 1 - Specifications



SPECIFICATIONS	70P
Hydraulic System	18 GPM @ 2650 PSI
Max Compressor Speed	1200 RPM
Hydraulic Operating Pressure	2650 PSI
Hydraulic Relief Pressure	3500 PSI
Max Working Pressure	150 PSI
Air Delivery (At Max Speed)	70 CFM @ 100 PSI
Weight (Hydraulic Driven Asm)	325 lbs.
Weight (Air Pump Only)	117 lbs.
Dimensions (Length)	33.19"
Dimensions (Width)	22.5"
Dimensions (Height)	21.88"
Electrical	12V DC
Crankcase Oil Capacity	2 Quarts
Cooler Fan	1200 CFM, 12 Volt (Pull)
Drive Type	Direct Driven

NOTICE

Duty cycle of Piston Compressors is 50:50 over 10 minutes.

This page intentionally left blank.

Chapter 2 - Installation

Component Installation

This section pertains to the installation of the air compressor, PTO, pump and other related items. The instructions are intended as a guide to assist you with particular installation. These instructions will provide only general information.

Compressor Torque Procedure

Pulsation Chamber Assembly:

Torque Value: 31 ft-lbs

Procedure: See Head Assembly Procedure

Head Assembly:

Torque Value: 34 ft-lbs

Procedure: Assemble head on the cylinder with head bolts started only, not tight. Working in the pattern shown, torque three times, increasing the torque each time as follows:

First Torque: 10 ft-lbs

Second Torque: 20 ft-lbs

Third Torque: 34 ft-lbs

After five hours of use re-torque bolts to 34 ft-lbs.

Cylinder Assembly:

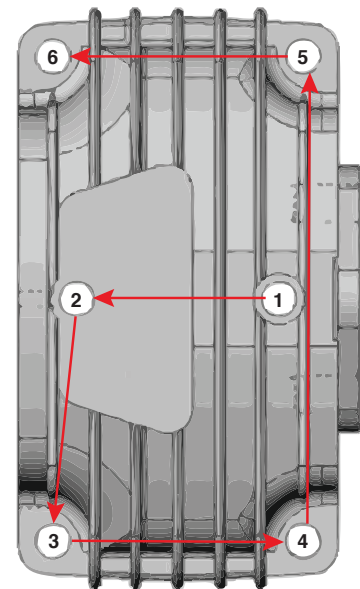
Torque Value: 20 ft-lbs

Procedure: After assembling cylinder over pistons and setting into place, tighten (6) cap screws finger tight. In a criss-cross pattern, tighten bolts evenly so all bolts are hand snug. Again in a criss-cross pattern torque each bolt to 20 ft-lbs, checking each bolt twice. After five hours of use, re-torque bolts to 20 ft-lbs.

Connecting Rod Control:

Torque Value: 18 ft-lbs

Procedure: Assemble rod onto the crankshaft taking care to align the machined surfaces together and tighten cap screws finger tight. Tighten bolts until hand tight and torque to 18 ft-lbs. Check twice the torque reading before final assembly of the cylinders.



Component Installation, continued

Pump Assembly:

The pump assembly may either be installed directly on the PTO or as an optional method, may be driven by a driveline from the PTO. Pump manufacturers provide specific installation information for their products and should be consulted if questions arise. Note: A dual or tandem hydraulic pump is recommended when additional hydraulically operated equipment are added to the hydraulic system.

PTO Assembly:

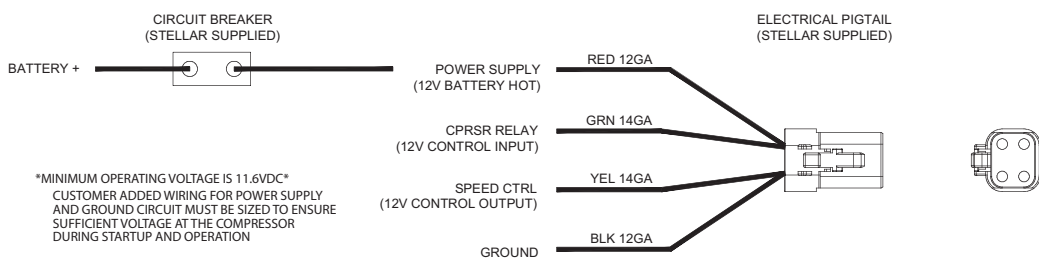
Check with the PTO manufacturer's representative for specific instructions regarding your particular make, model, and year of vehicle. As some trucks may require modification of the transmission cross member and the exhaust system, the manufacturer's instructions should be followed to ensure proper installation of the PTO.

Compressor Assembly:

Prepare the mounting location of the compressor by locating and drilling four (4) holes, 1/2" diameter as per the mounting pattern of the air compressor base. Using four (4) 3/8" x 1.25 GR-5 cap screws, 3/8" flat washer, and 3/8" nyloc nut, secure the compressor in place. The compressor is air cooled, and must have a clean supply of cooling air to the fan with minimum restrictions. Adequate space must be provided for proper circulation of air.

Electric Speed Control:

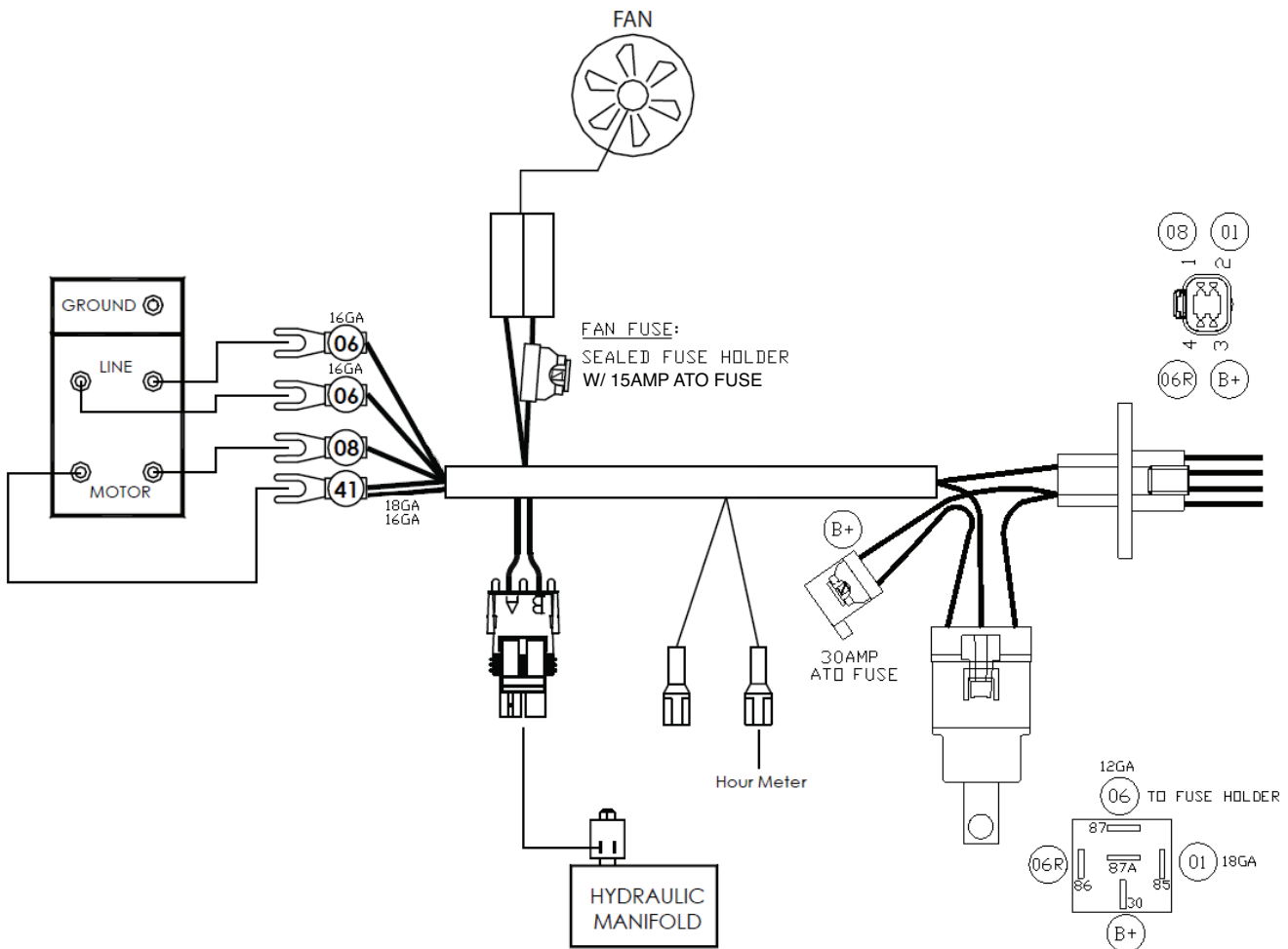
An optional electric or electronic speed control must be used to maintain proper operating speed of the air compressor. The engine speed control will automatically increase from idle to preset speed when engaged and decrease when disengaged.



70P Electrical Schematic

Electrical Connections:

Supplied with the compressor is a wire harness pigtail which has 4 leads coming off of it. Connect the black wire to the vehicle frame or other suitable ground. Connect the red lead to a fused power source. Mount a single throw toggle switch in a convenient location and connect the green wire from the compressor to this switch. Connect the other switch terminal to a fuse holder and then to a 12V power supply. The yellow wire is required from the compressor when connecting the speed control into the system.



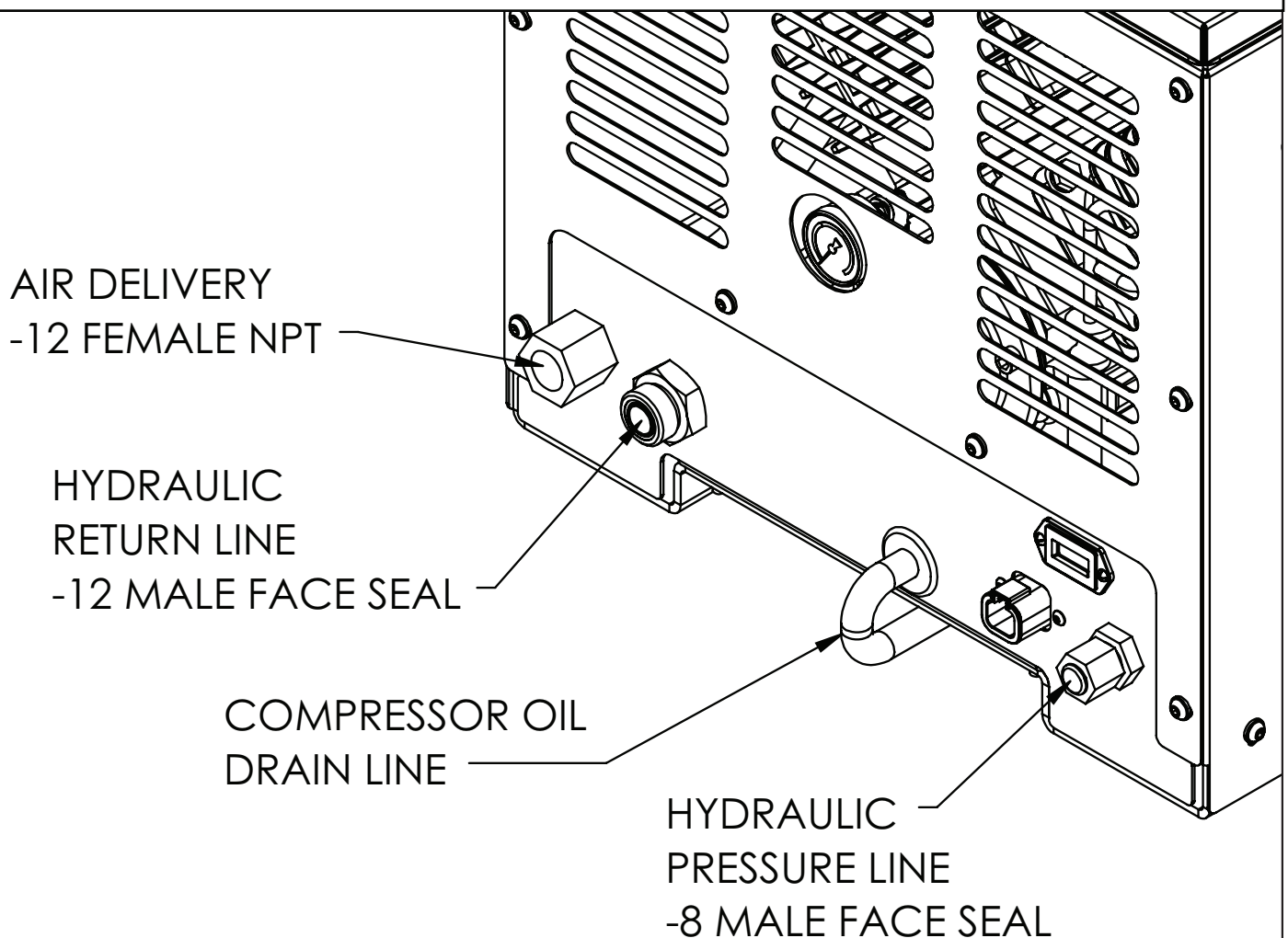
CIRCUIT #	CIRCUIT	WIRE GA	WIRE COLOR
01	GROUND	SEE DWG	BLACK WITH WHITE TEXT
06	COMPRESSOR	SEE DWG	GREEN WITH BLACK TEXT
06R	CPRSR RLY	14GA	GREEN WITH BLACK TEXT
B+	BAT POS	12GA	RED WITH BLACK TEXT
08	SPEED CNTRL	14GA	GREEN WITH BLACK TEXT
41	HYDRAULIC SOLENOID	SEE DWG	GREEN WITH BLACK TEXT

Hydraulic System

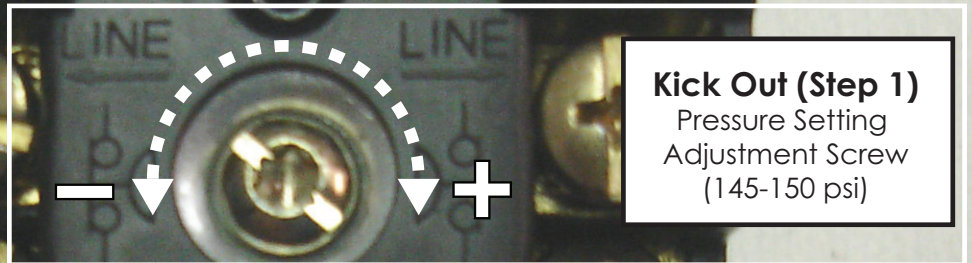
The hydraulic system consists of the oil reservoir, pump, manifold, motor, filters, and hoses. A $\frac{1}{2}$ " 3000psi pressure line should be connected to the pressure line fitting on the bulkhead. This line is plumbed through an internal manifold block, and then to the motor. After the motor there is an internal cooler which the oil passes through before going to the return line bulkhead fitting. A $\frac{3}{4}$ " minimum low-pressure return line is to connect to the return bulkhead fitting and filter before being returned to the oil reservoir. Stellar Industries recommends a sufficiently-sized reservoir be provided that includes the proper suction and return filters. The cooler on the compressor is designed and sized to cool the air compressor efficiently. An auxiliary oil cooler is required when additional hydraulically operated equipment is added to the hydraulic system. Pressure on the return line exceeding 200PSI can and will cause damage to the filter, cooler, and components of the compressor's hydraulic system.

Air System

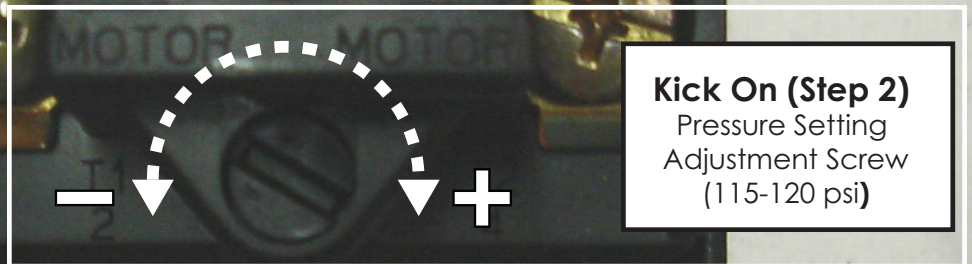
The airline is routed using a $\frac{3}{4}$ " 200 psi air/steam hose. This delivery line should be free from all obstructions. Note: There should be no check valve installed between the compressor and the air tank (One is already included in the compressor package). Stellar Industries recommends the installation of a ten-gallon air tank (minimum) to maintain proper operation of the air compressor.



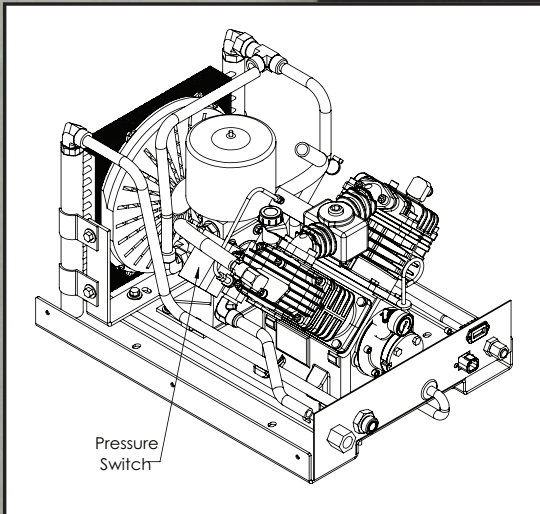
Compressor Pressure Switch



Kick Out (Step 1)
Pressure Setting
Adjustment Screw
(145-150 psi)



Kick On (Step 2)
Pressure Setting
Adjustment Screw
(115-120 psi)

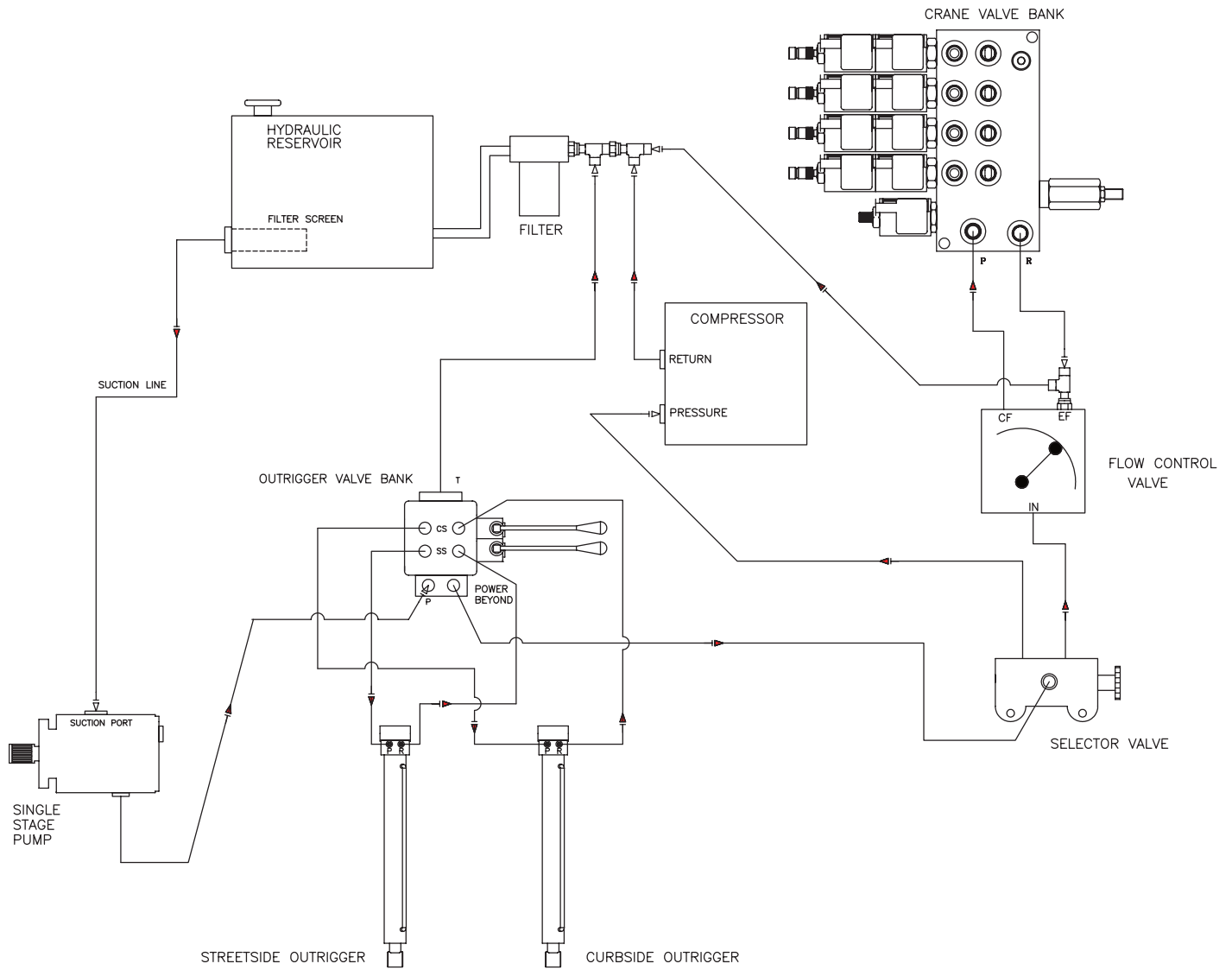


Note: Turning adjustment screws clockwise increases psi settings.
Turning adjustment screws counterclockwise decreased psi settings.

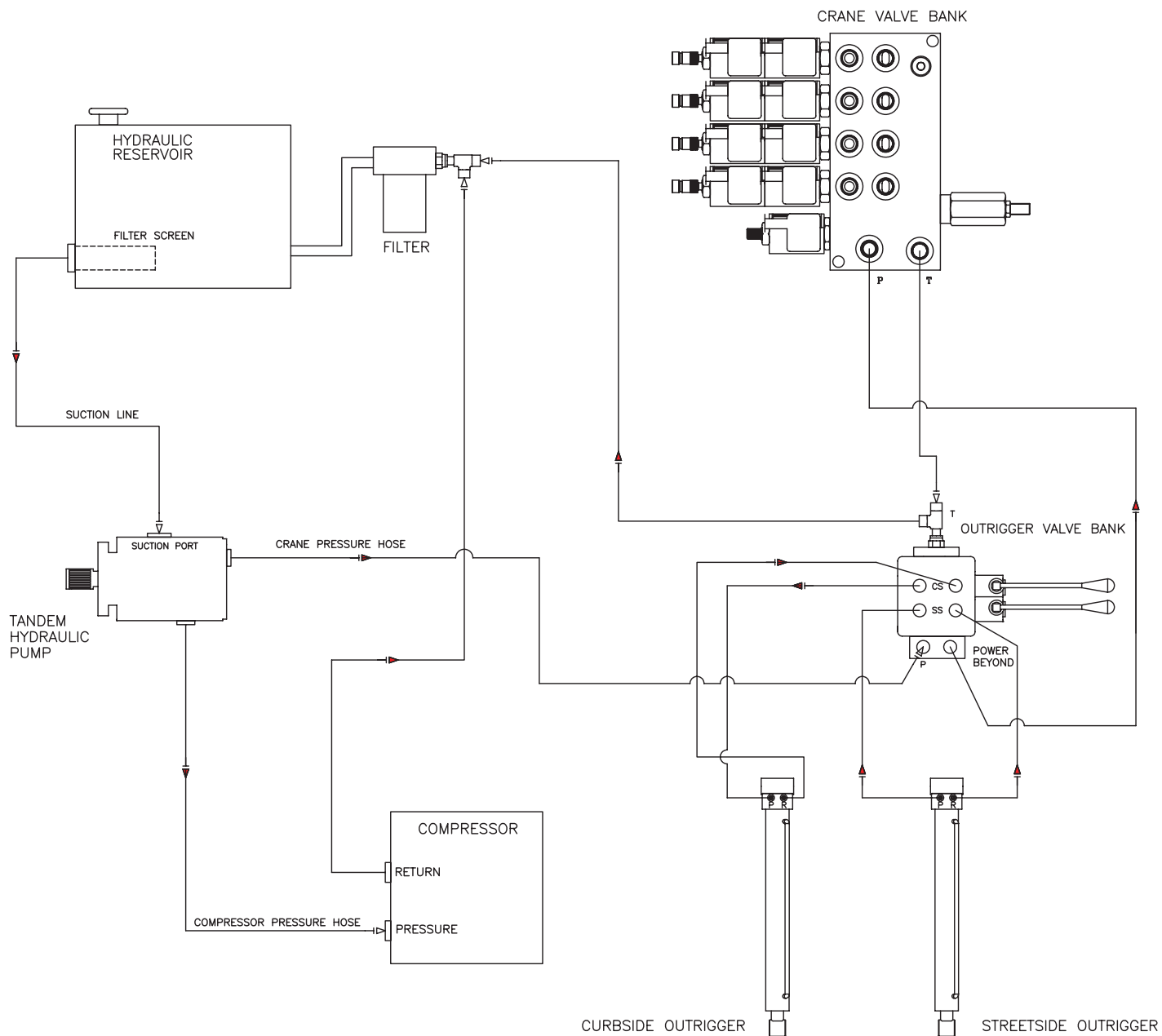
Pressure Setting Instructions:

1. Always set the kick out pressure setting first. Adjust the kick out screw setting to 145 psi minimum/150 psi maximum.
2. After kick out pressure is set, adjust the kick on screw setting to 115 psi minimum/120 psi maximum.
3. Cycle compressor to verify correct settings.
4. For questions about this procedure, please contact Stellar Industries Customer Service at 800-321-3741.

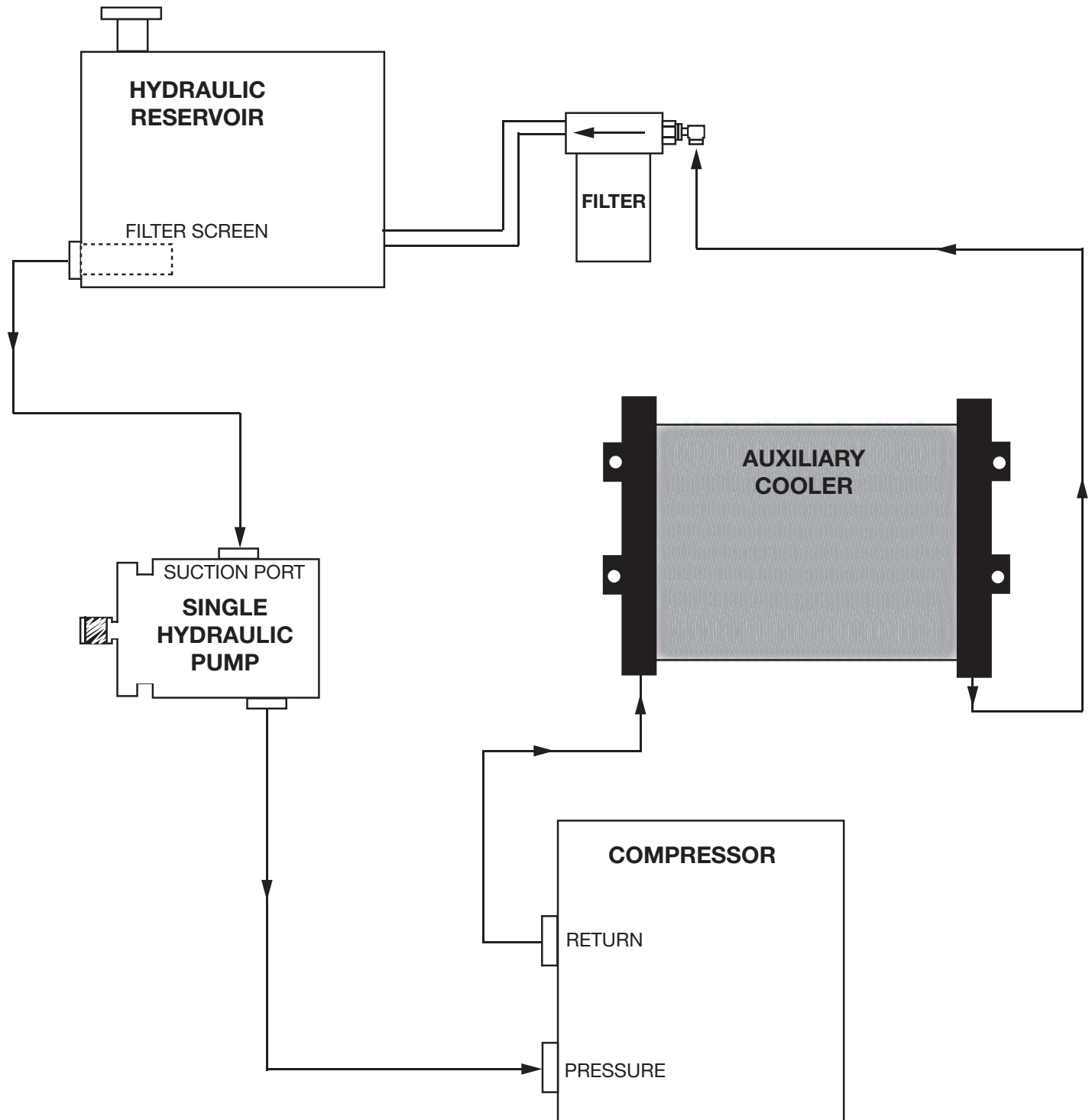
Typical Hydraulic Circuit for Single-Section Pump



Typical Hydraulic Circuit for Tandem (Two-Part) Pump

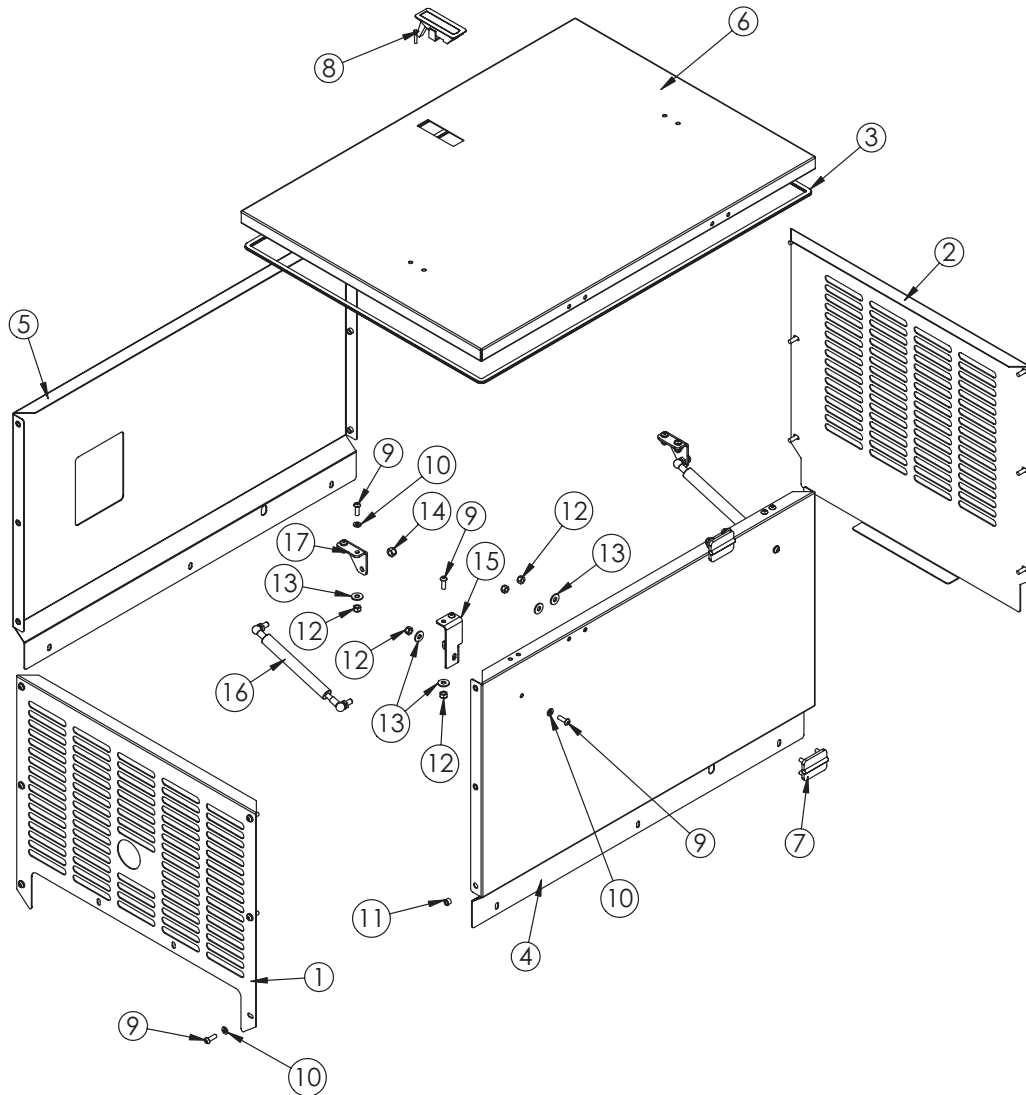


Typical Hyd. Circuit for Compressor with Aux. Cooler



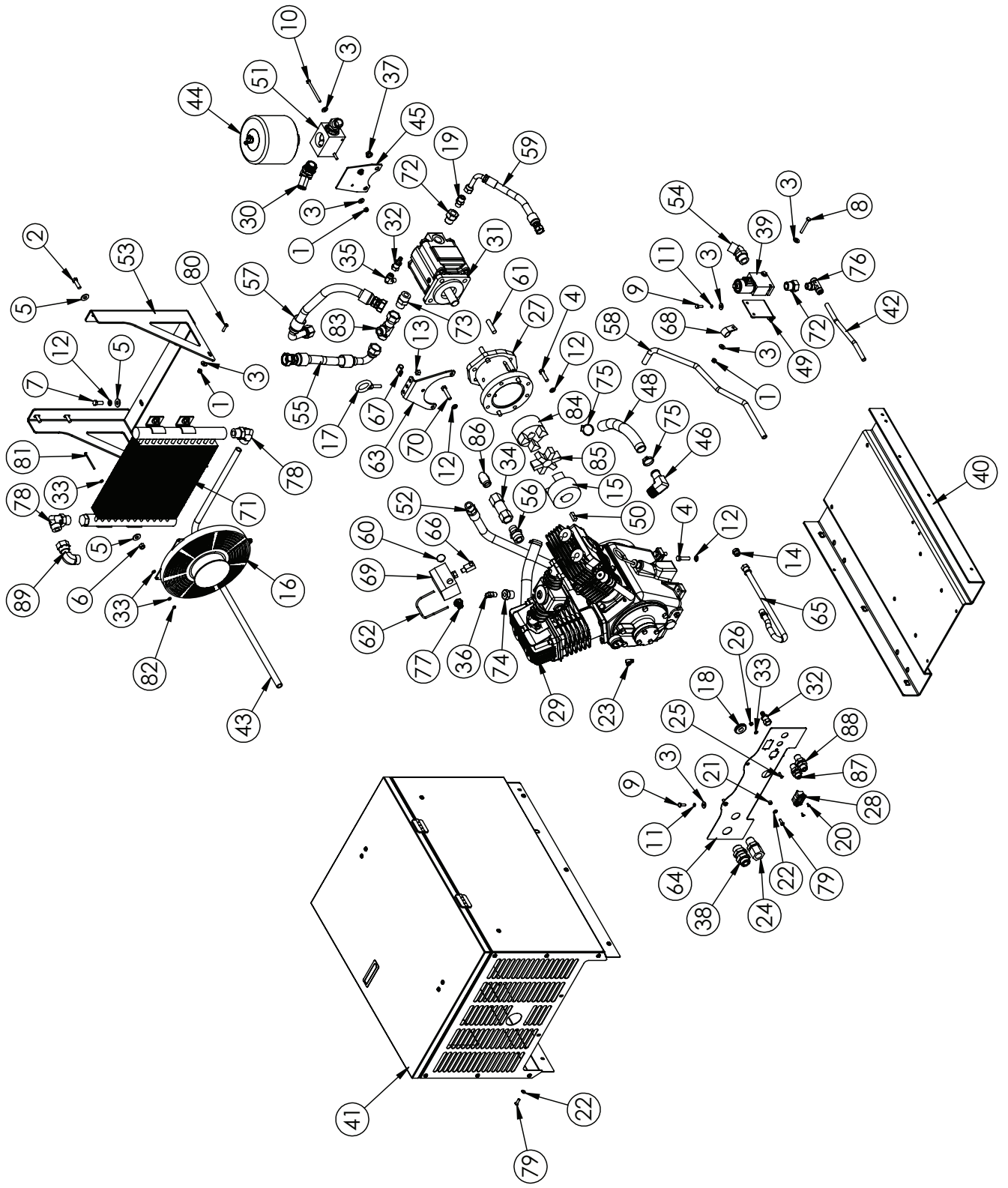
Chapter 3 - Assembly Drawings

70P Case Assembly - PN 70738



ITEM	PART	DESCRIPTION	QTY.
1	70747	PANEL FRONT CPRSR SHD132 SHROUD PC WHITE	1
2	70741	PANEL BACK CPRSR SHD132 SHROUD PC WHITE	1
3	73655	WEATHERSTRIP RIBBED 0.38X0.13X105.00	1
4	70740	PANEL SIDE RH SHD132 SHROUD PC WHITE	1
5	70739	PANEL SIDE LH SHD132 SHROUD PC WHITE	1
6	70748	PANEL LID CPRSR SHD132 SHROUD PC WHITE	1
7	70379	HINGE ZINC BLK FLUSH SURFACE MNT DC-50-P8	2
8	69101	LATCH SWING LEVER FLUSH TRIGGER 0.91-1.81	1
9	C6021	CAP SCR 0.25-20X0.75 BTNHD SS	22
10	19592	WASHER 0.25 FLAT NYLON	18
11	19589	NUT SERT 0.25-20X0.38 OD	12
12	0333	NUT 0.25-20 HHGR5 NYLOC	18
13	D0917	WASHER 0.25 FLAT SS	18
14	0342	NUT 0.31-18 HHGR5 NYLOC	4
15	73653	BRKT LOWER GASPROP CPRSR SHROUD V2 PC WHITE	2
16	69103	GAS SPRING 7.50-12.00 30# FORCE	2
17	73654	BRKT LID GASPROP CPRSR SHROUD V2 PC WHITE	2

70P Assembly Drawing - PN 70734

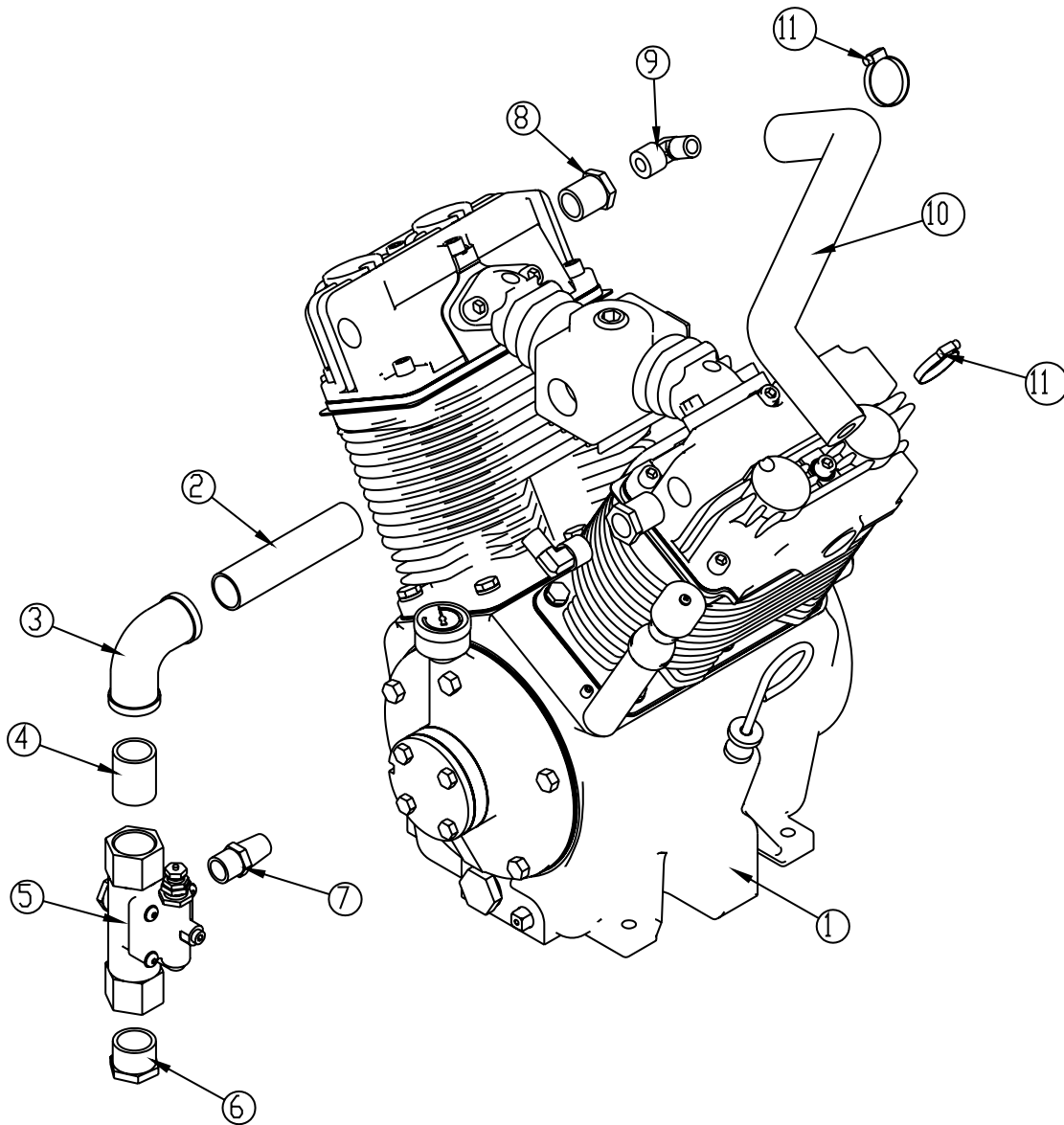


70P Assembly Bill - PN 70734

ITEM	PART	DESCRIPTION	QTY.	ITEM	PART	DESCRIPTION	QTY.	ITEM	PART	DESCRIPTION	QTY.
1	0333	NUT 0.25-20 HHGR5 NYLOC	6	34	5480	VALVE CHECK 0.75 STANDARD	1	67	C0081	CLAMP 0.50 BLK VINYL	1
2	0335	CAP SCR 0.38-1.6X1.25 HHGR5	4	35	55200	FIG 6-4 MFS-MP 90	1	68	C0082	CLAMP 0.75 BLK VINYL	1
3	0340	WASHER 0.25 USS FLAT	14	36	60187	FIG 4-4 MP-CRPSN 90	1	69	C0863	SWITCH PRES COMPRESSOR	1
4	0345	CAP SCR 0.38-1.6X1.50 HHGR5	5	37	61470	NUT 0.50-13 HHGR8 DISC LOCK	4	70	C0944	CAP SCR 0.38-1.6X1.75 HHGR5	3
5	0346	WASHER 0.38 USS FLAT	10	38	65025	FIG 12-12 MFS-MFS BULKHEAD UNION	1	71	C1129	COOLER OIL 24 GPM MAX FLOW	1
6	0347	NUT 0.38-16 HHGR5 NYLOC	4	39	70472	MANIFOLD ASM SVRV10-12SAE 3500PSI	1	72	C2053	FTG 12-8 MORB-FORB STRAIGHT REDUCER	2
7	0351	CAP SCR 0.38-1.6X1.00 HHGR5	2	40	70735	ALUM BODY BASE W/DMT SHD132 BULKHEAD PC BLACK	1	73	C2142	FTG 12-12 MFS-MORB STRAIGHT	1
8	0438	CAP SCR 0.25-20X2.25 HHGR5	2	41	70738	SHROUD ASM CPRSR SHD132	1	74	C2220	FTG 12-4 MP-FP REDUCER BUSHING	1
9	0479	CAP SCR 0.25-20X0.75 HHGR5	4	42	70749	TUBE ASM 0.50 BLKHEAD TO MANIFOLD SHD132 YZ	1	75	C4659	HOSE CLAMP #16 SS	4
10	0483	CAP SCR 0.25-20X3.50 HHGR5	2	43	70753	TUBE ASM 0.75 COOLER TO BLKHEAD SHD132 YZ	1	76	C4909	FTG TEE S L LOK 8-SOLO-S	1
11	0521	WASHER 0.25 LOCK	4	44	70757	FILTER AIR SHD132	1	77	C5616	CLAMP ROMEX 0.50	1
12	0523	WASHER 0.38 LOCK	10	45	70759	BRKT AIR FILTER MNT SHD132 PC BLACK	1	78	C5968	FTG 12-12 MFS-MAORB 90	2
13	0535	NUT 0.38-16 HHGR5	1	46	70760	FIG 16-16 HB-MP 90	2	79	C6021	CAP SCR 0.25-20X0.75 BTNHD SS	8
14	0560	FTG 6 MFS PLUG	1	47	70764	HOSE SUCTION 1.00X16.00	1	80	C6022	CAP SCR 0.25-20X1.00 BTNHD SS	2
15	10078	COUPG 3/8 KW L150 1.438	1	48	70764	HOSE SUCTION 1.00X16.00	1	81	D0075	SCREW #6-32X2.75 RH HD MACHINE	2
16	10084	FAN 12.00 PULL 12 VOLT 132A COMP	1	49	70765	BRKT HYD VALVE MNT SHD132 PC BLACK	1	82	D0076	NUT #6-32 HH NYLOC	2
17	12122	BOLT 0.38X1.00 EVE 567-23-ZN	1	50	71374	KEY FLYWHEEL 3/8 X 1.125	1	83	D0525	FTG 12-12-12 MFS-FFSS-MFS RUN TEE	1
18	12813	GROMMET 1.25ODX0.125X0.625ID	1	51	72382	FLTR MANIFOLD SHD132 1 INCH OUTLET	1	84	D0791	COUPG 1/4 KW L150-0.75	1
19	1554	FIG 8-8 MFS-MORB STRAIGHT	1	52	72383	HOSE STEAM 0.75-12FJ SHORT-12MP SHORT-23CL STST	1	85	D0793	COUPG SPIDER L150-U BLUE URETHANE	1
20	18611	SCREW #6-32X0.38 HH MACH SELF TAP	2	53	73363	BRKT COOLER MOUNT SHD132 V2 PC BLACK	1	86	D1267	FTG .75X90 DEG ST EL BRASS 44164	1
21	19589	NUT SERT 0.25-20X0.38 OD	2	54	7351	FIG ST TH ELBOW 45 DEG 12VSOLO	1	87	D1299	FTG 6-6 MFS-MFS BULKHEAD UNION	1
22	19592	WASHER 0.25 FLAT NYLON	8	55	73646	HOSE 0.75(3000PSI)-12FFSS SHORT-12FFSS 90 SHORT-8.25CL	1	88	D1318	FTG 8-8 MFS-MFS BULKHEAD UNION	1
23	20451	FIG 2-2 MP-FP STREET ELBOW 90 BRASS	1	56	73647	FIG 16-12 MP-MP HEX NIPPLE STRAIGHT	1	89	c4903	FTG 12-12 MFS-FFSS 90	1
24	21393	FIG 12-12 FP-MJ BULKHEAD STRAIGHT	1	57	73649	HOSE 0.75(3000PSI)-12FFSS SHORT-12FFSS 90 LONG-12CL	1				
25	22183	SCREW #8-32X0.75 BTNHD SS	2	58	73650	HOSE PL 0.38X24.00 MULTIPURPOSE BLACK	1				
26	22186	NUT #8-32 HH NYLOC SS	2	59	73651	HOSE 0.50(3000PSI)-8FFSS SHORT-8FFSS 90 LONG-8.50CL	1				
27	27718	MOTOR MNT SHD132 10081 MACHINED	1	60	73652	PLUG NICKEL PLATED BUTTON 0.88	1				
28	28855	HOUR METER 12VDC TST 180-1911	1	61	73722	STUD 0.50-13X2.00 SELF LOCKING	4				
29	30236	CPRSR HV60A88NP	1	62	74090	TUBING COPPER SHD132 CPRSR BULKHEAD	1				
30	34498	FIG 16-16 HB-MAORB 45	2	63	74091	BRKT LIFTING CPRSR SHD132 PC BLACK	1				
31	4570	MOTOR HYD M3000A731SPLZA15-32	1	64	77506	PANEL BULKHEAD 70P PC WHITE	1				
32	52474	FIG HOSE 6-6 FFSS-PL SHORT	2	65	78190	HOSE 0.38(200PSI)-6PL SHORT-6PL STRAIGHT-23.5CL	1				
33	5290	WASHER #8 SAE FLAT	8	66	8276	FIG 4-2 MP-MP 90	1				

CHANGE FAN FUSE FROM 4470 TO 4471
(20 AMP TO 25 AMP)

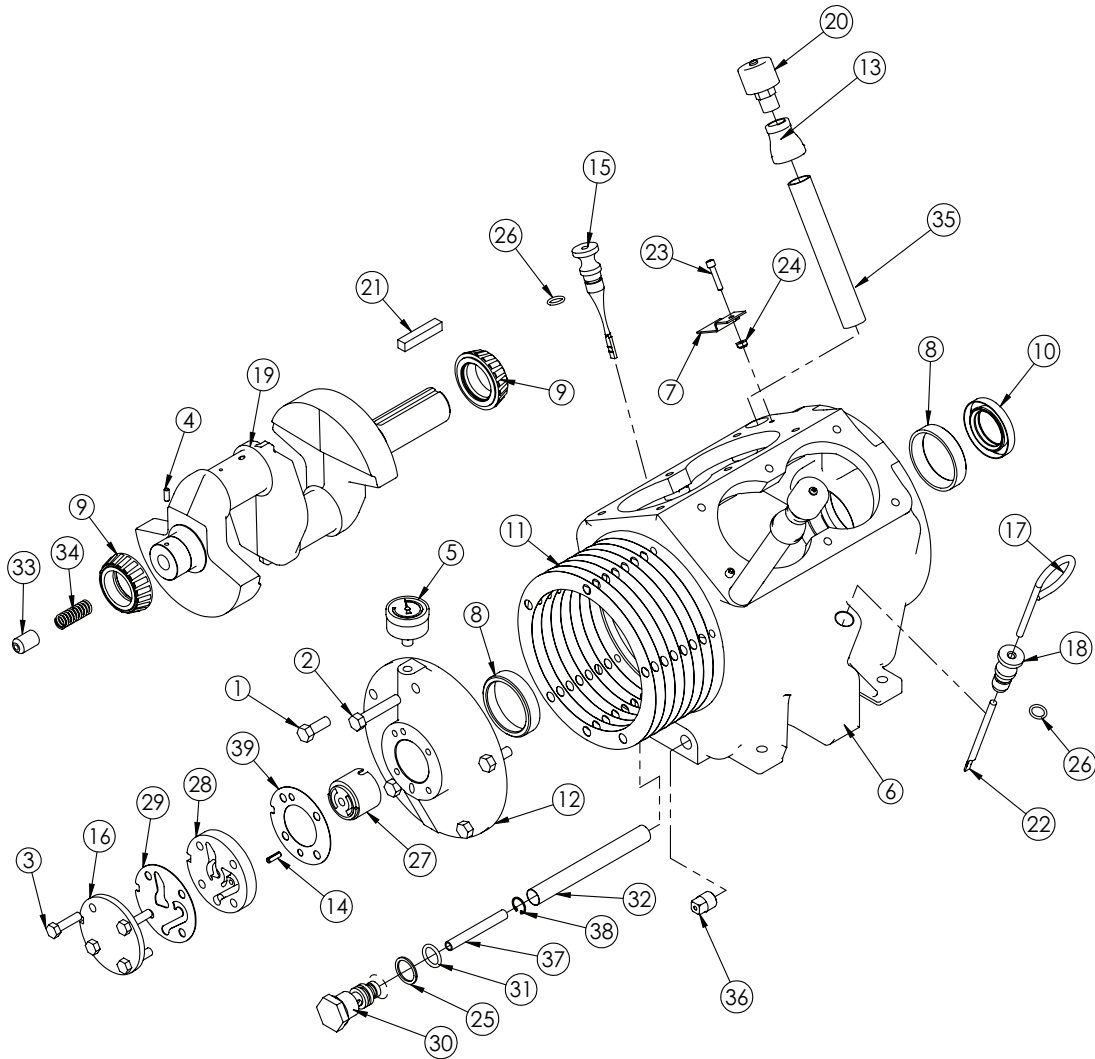
SUH-132 Compressor Assembly



COMPRESSOR ASSEMBLY

ITEM	PART	DESCRIPTION	QTY.	ITEM	PART	DESCRIPTION	QTY.
1	10365	CPRSR HV60W88NP	1	7	10082	MUFFLER EXHAUST AIR 0.50 NPT 1A328	1
2	24096	NIPPLE 1.00X5.00 SS 304	1	8	C2236	FTG .75-.50 BUSH HEX BLK	2
3	4555	ELBOW 1.00 90 DEG BRASS	1	9	C6235	FTG BRASS ELL 90 DEG A/C	2
4	D1450	NIPPLE 1.00XCLOSE BRASS 40-100	1	10	25450	HOSE 0.63X18.00	1
5	10155	UNLOADER-CHECK VALVE NL-14 CONRDR	1	11	C4665	HOSE CLAMP #8 SS	2
6	D1273	FTG 1.00-0.75 BUSH RED BRASS	1				

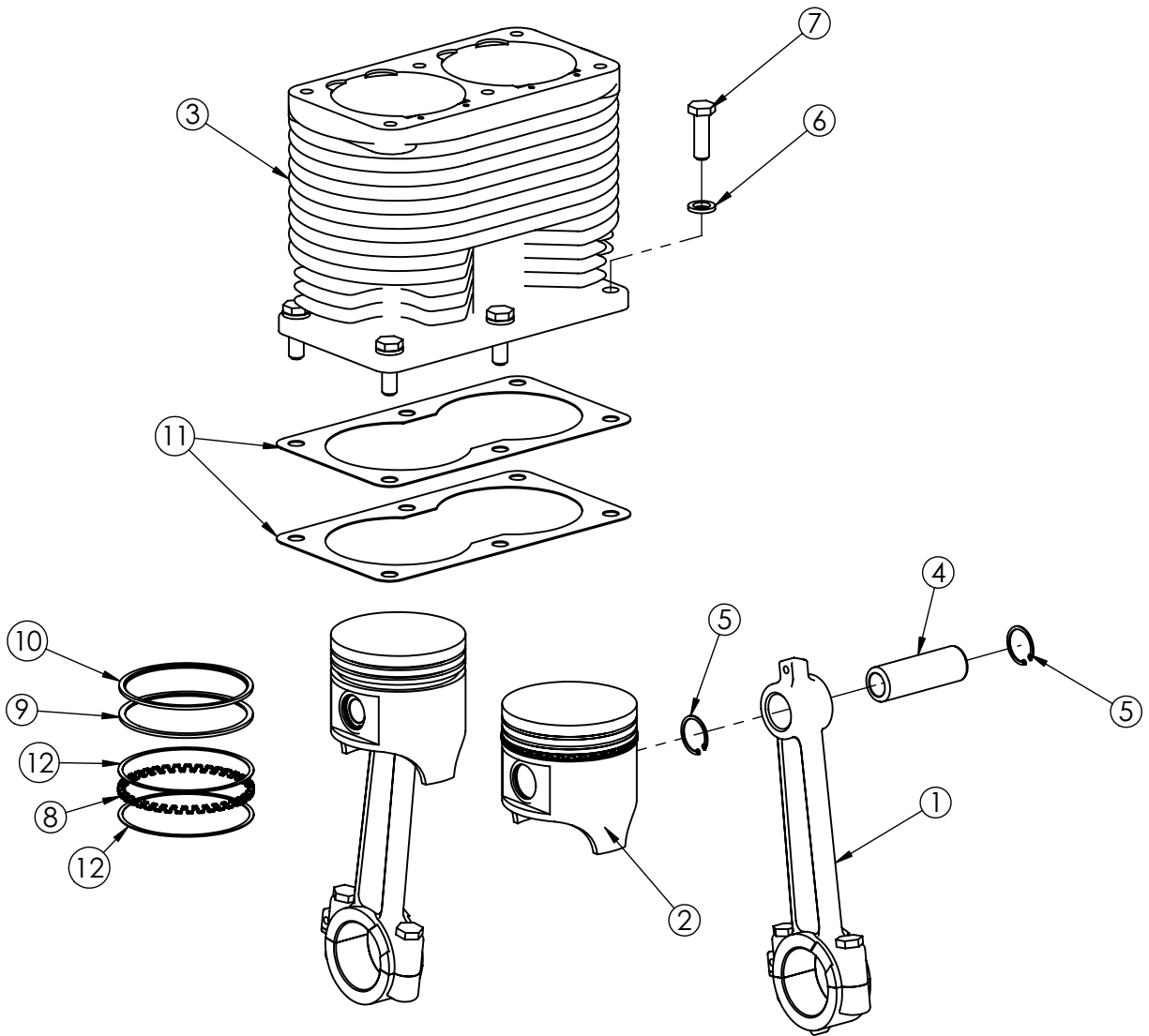
Crankcase Group (Straight Shaft)



CRANKCASE GROUP

ITEM	PART	DESCRIPTION	QTY.	ITEM	PART	DESCRIPTION	QTY.
1	0351	CAP SCR 0.38-16X1.00 HHGR5	4	20	23483	BREATHER CPRSR .38NPT BF6	2
2	0353	CAP SCR 0.38-16X2.00 HHGR5	1	21	23669	KEY FLYWHEEL 3/8 X 2	1
3	0485	CAP SCR 0.31-18X1.25 HHGR5	4	22	23685	DIPSTICK ROD HV60	1
4	5817	ROLL PIN 0.19X.50	1	23	26033	CAP SCR #10-24X1.00 SH	2
5	5819	GAUGE OIL PSI 1.5	1	24	26034	NUT #10-24 HH NYLOC	2
6	11878	CRANKCASE HV60	1	25	50389	WASHER 0.885X1.115X0.064 COPPER	1
7	11885	BREATHER CARRIER HV60	2	26	C0041	O-RING-112	2
8	11888	BEARING CUP HV60	2	27	C0050	OIL PUMP	1
9	11889	BEARING CONE	2	28	C0052	PORT PLATE MACHINED	1
10	11890	BEARING SEAL HV60	1	29	C0054	PORT PLATE COVER GASKET (SMALL)	1
11	11891	BEARING CARRIER GASKET .015 HV60	7	30	C0055	OIL INTAKE PLUG	1
12	11893	BEARING CARRIER HV60	1	31	C0057	O-RING 2-115 FOR OIL PICKUP TUBE	1
13	21659	REDU BUSHING 0.75X0.38 BRASS	2	32	C0058	OIL INTAKE FILTER SCREEN	1
14	22209	ROLL PIN 0.19X.63	1	33	C0059	OIL PUMP TRANSFER BUSHING	1
15	22210	DIPSTICK OIL CHECK V480	1	34	C0060	SPRING OIL PUMP	1
16	22626	PORT PLATE COVER	1	35	C1054	FTG 12-12X6.00 MP-MP NIPPLE STRAIGHT BLK	2
17	22686	HANDLE DIPSTICK OIL CHECK V480	1	36	C4841	PLUG 0.38 NPT SQ HD BLK	1
18	23050	DIPSTICK BODY (200)	1	37	C5416	TUBE OIL INTAKE .38ODX3.00	1
19	23368	CRANKSHAFT HV60	1	38	C6273	SNAP RING PISTON PIN N5000-62	1
				39	C6275	PORT PLATE GASKET	1

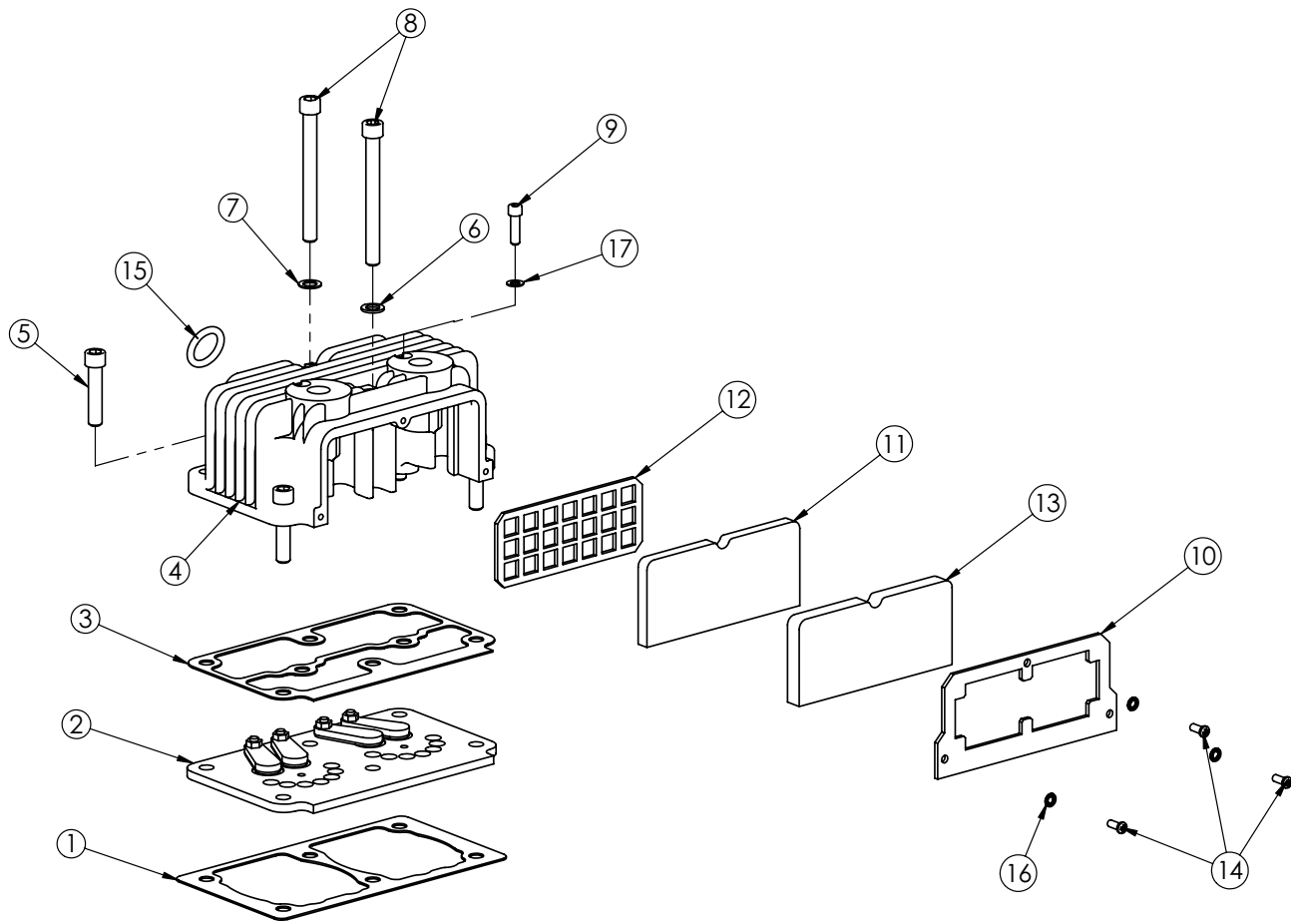
Cylinder Group



CYLINDER GROUP

ITEM	PART	DESCRIPTION	QTY.
1	11907	CONNECTING ROD HV60 O/S	2
2	23369	PISTON HV60	2
3	11877	CYLINDER HV60	1
4	23370	PISTON PIN HV60	2
5	23481	SNAP RING PISTON HV60	4
6	0523	WASHER 0.38 LOCK	6
7	0335	CAP SCR 0.38-16X1.25 HHGR5	6
8	23043	RING OIL HV 60 FLEX DIVIDER	2
9	23044	RING COMPRESSION LOWER HV 60	2
10	23042	RING COMPRESSION UPPER HV 60	2
11	11884	GASKET CYLINDER BASE HV60	2
12	36369	RING OIL HV 60 RING RAIL	4

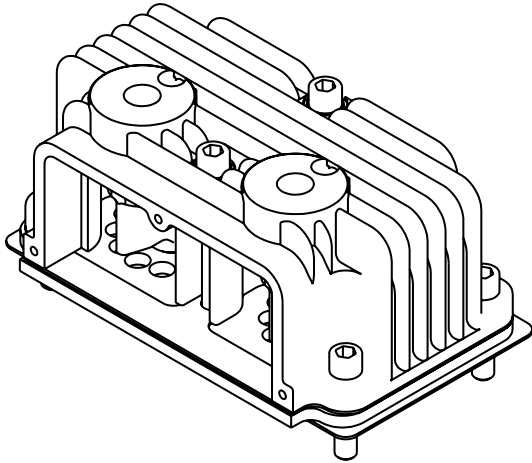
Head Group



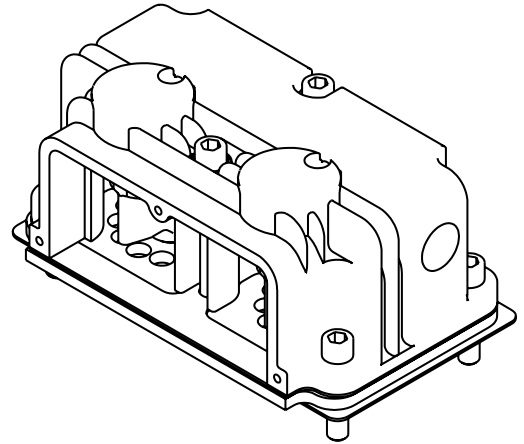
HEAD GROUP

ITEM	PART	DESCRIPTION	QTY.
1	9980	GASKET CYL HEAD HV-60	1
2	11897	VALVE PLATE ASSEMBLY HV60	1
3	9979	GASKET CYL HEAD (VALVE PLATE) HV-60	1
4	11894	HEAD A/C HV60	1
5	C1586	CAP SCR 0.38-16X1.75 SH HEAD BOLT	4
6	C0040	WASHER HD BOLT STL	1
7	5828	WASHER LONG HD BOLT (BRASS)	1
8	11898	CAP SCR 0.38-16X3.75 SH HEAD BOLT	2
9	11886	CAP SCR 0.25-28X0.88 SH	2
10	11900	FILTER RETAINER HV60	1
11	11901	FILTER INNER ELEMENT HV60	1
12	11903	FILTER SCREEN HV60	1
13	11902	FILTER OUTER ELEMENT HV60	1
14	6684	CAP SCR #10-32X0.50 SH	3
15	C0291	O-RING-214 VITON 9009-75	1
16	23875	WASHER #10 STAR CPRSR	3
17	26032	WASHER 0.255 ID BRASS	2

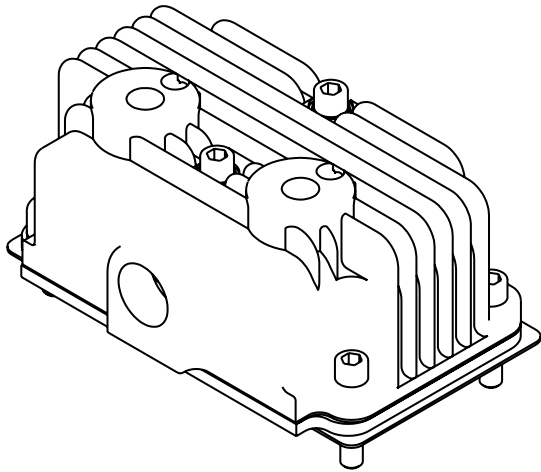
Head Options



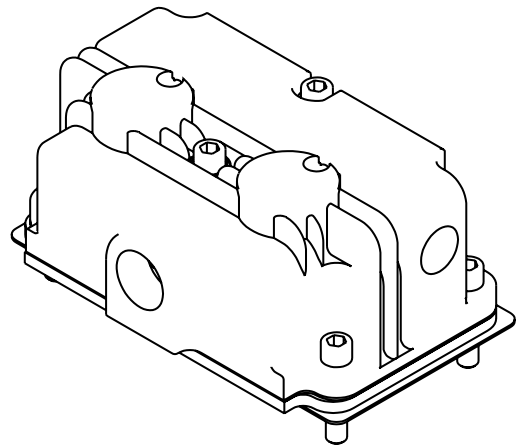
#11894
Aluminum Air Cooled
Imbedded Filter & 1"
Threaded NPT Discharge



#11895
Aluminum Water Cooled
Imbedded Filter & 1"
Threaded NPT Discharge

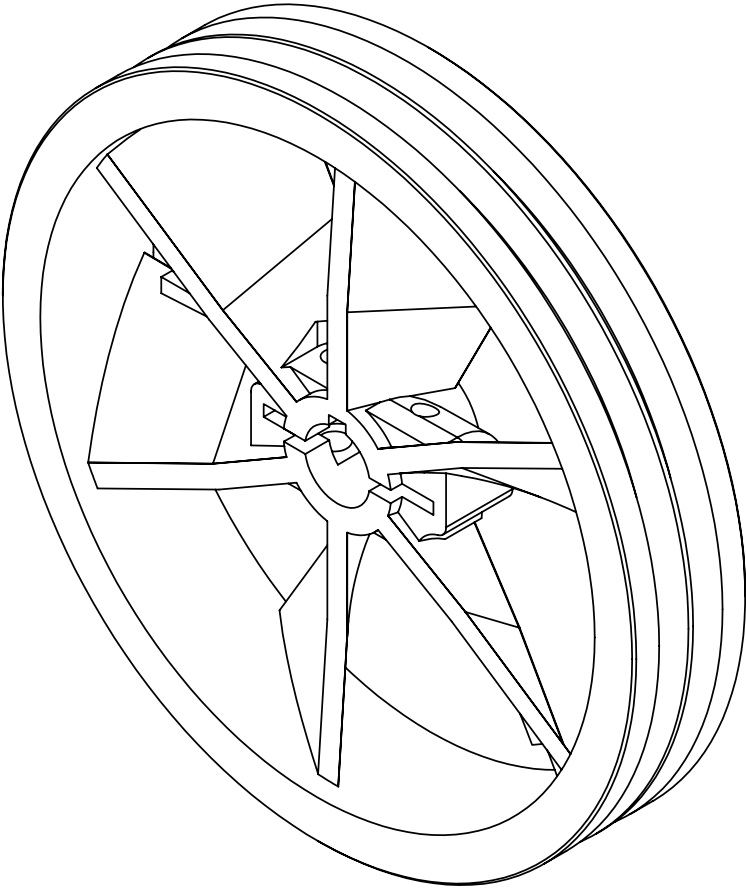


#11896
Aluminum Air Cooled
1" Threaded Inlet & 1"
Threaded NPT Discharge



#10381
Aluminum Water Cooled
1" Threaded Inlet & 1"
Threaded NPT Discharge

Flywheel Options



28688
14" B-DUAL GROOVE



Subject to Change without Notification.
© 2023 Stellar Industries