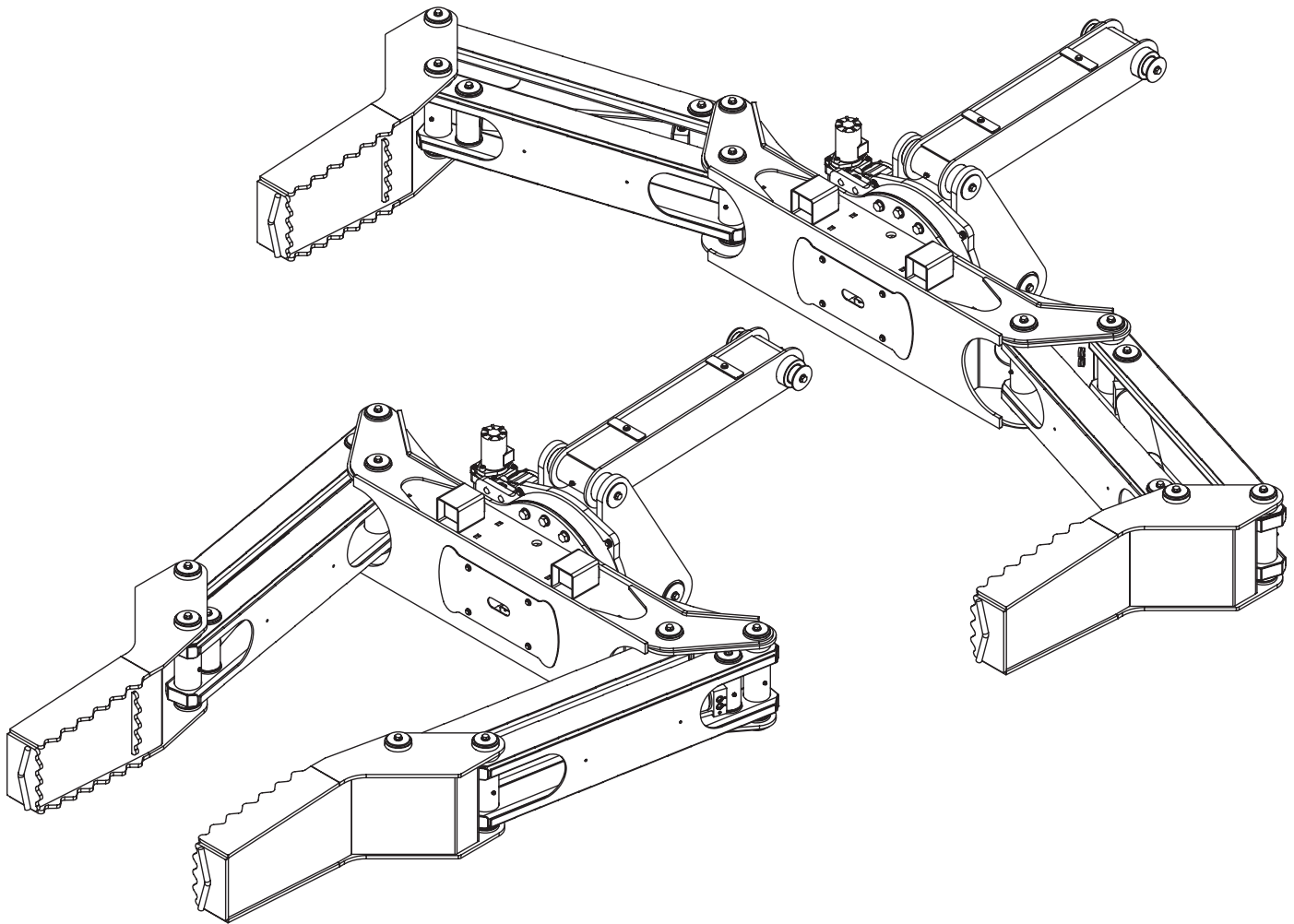


# TireMan 7120 Owner's Manual

Installation • Assembly Drawings • Parts



**Notice: A copy of this manual must remain with the equipment at all times.  
For a printable download copy, please visit: [www.stellarindustries.com](http://www.stellarindustries.com)**

**Stellar Industries, Inc.**

**190 State Street**

**PO Box 169**

**Garner, IA 50438**

**800-321-3741**

**Fax: 641-923-2811**

**[www.stellarindustries.com](http://www.stellarindustries.com)**

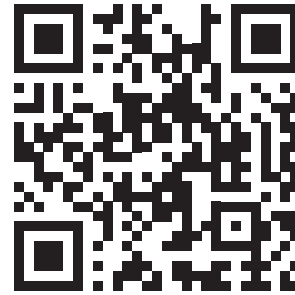
Subject to Change without Notification.  
© 2024 Stellar Industries, Inc.

Rev 3  
PN 90382

# P65 Warning / Cold Weather Notice

## **WARNING**

Operating, maintaining, and servicing a Stellar product may expose you to chemicals including, but not limited to, engine exhaust, carbon monoxide, phthalates, and lead. These chemicals are known to the State of California to cause cancer and birth defects (or other reproductive harm). To keep your exposure to a minimum, be sure to avoid breathing exhaust and service your Stellar product in a well-ventilated area while wearing gloves or washing your hands frequently. For more information, go to [www.P65Warnings.ca.gov/passenger-vehicle](http://www.P65Warnings.ca.gov/passenger-vehicle).



[www.p65/warning.ca.gov](http://www.p65/warning.ca.gov)

## **NOTICE**

### **Cold Weather Performance**

**Although clear data on cold weather performance from every steel manufacturer is not available for all types and thicknesses of steel, Stellar Industries is confident that the weldments on our products will operate to 100% of their intended purpose to temperatures down to -40° F / C.**

**It is recommended if Stellar manufactured equipment needs to be used in temperatures below -40° F / C, the operator should pull the unit into a climate-controlled area and allow the weldments to warm up to and then maintain a temperature above this level.**

# Table of Contents

---

Introduction .....	iv
<b>Chapter 1 - Specifications .....</b>	<b>1</b>
Model TM7120 Specifications .....	2
TM7120 Dimensional Layout .....	3
TM7120 Dimensional Layout (Continued) .....	4
General Installation .....	5
Installer Notice .....	5
Torque Data Chart .....	6
Hydraulic Installation .....	7
Hydraulic Pressure Settings .....	8
Face Seal/O-Ring Size Chart .....	8
Hydraulic Kit w/Fixed Pads - PN 106124 .....	9
Hydraulic Kit w/Rotating Pads - PN 108688 .....	10
Hydraulic Kit w/Continuous Rotating Pads - PN 106491 .....	11
Tire Man TM7120 V3 Fixed- PN 108917 .....	12
Tire Man TM7120 V3 Fixed- PN 108917 Parts List .....	13
Tire Man TM7120 V3 Fixed- PN 108917 Parts List .....	14
Tire Man TM7120 V3 90 Deg - PN 108918 .....	16
Tire Man TM7120 V3 90 Deg - PN 108918 Parts List .....	17
Tire Man TM7120 V3 90 Deg - PN 108918 Parts List .....	18
Tire Man TM7120 V3 Cont - PN 108919 .....	20
Tire Man TM7120 V3 Cont - PN 108919 Parts List .....	21
Tire Man TM7120 V3 Cont - PN 108919 Parts List .....	22
Bearing Swing Drive - PN 76755 .....	23
Decal Placement - PN 54772 .....	24

# Introduction

A copy of this manual is provided with every tire manipulator and can be found in the hard plastic manual case that is installed on the chassis. A copy of this manual shall remain with the tire manipulator at all times.

Throughout the manual, three signal words will be used to bring attention to important items:

## **NOTICE**

A NOTICE signal word indicates a practice not related to physical injury.

## **⚠ WARNING**

A WARNING signal word indicates a hazardous situation which, if not avoided, could result in death or serious injury.

## **⚠ DANGER**

A DANGER signal word indicates a hazardous situation which, if not avoided, will result in death or serious injury.

Information contained within this manual does not cover operation, maintenance, or troubleshooting. Please refer to the Large OTR Crane Manual for details on these items.

This manual is not binding. Stellar Industries, Inc. reserves the right to change, at any time, any or all of the items, components, and parts deemed necessary for product improvement or commercial/production purposes. This right is kept with no requirement or obligation for immediate mandatory updating of this manual.

If more information is required or technical assistance is needed, or if you feel that any part of this manual is unclear or incorrect, please contact the Stellar Customer Service Department by phone at 800-321-3741 or email at [service@stellarindustries.com](mailto:service@stellarindustries.com).

**For Technical Questions, Information, Parts, or Warranty, Call Toll-Free at  
800-321-3741**

*Hours: Monday - Friday, 8:00 a.m. - 5:00 p.m. CST*

*Or email at the following addresses:*

**Technical Questions, and Information**

*[service@stellarindustries.com](mailto:service@stellarindustries.com)*

**Order Parts**

*[parts@stellarindustries.com](mailto:parts@stellarindustries.com)*

**Warranty Information**

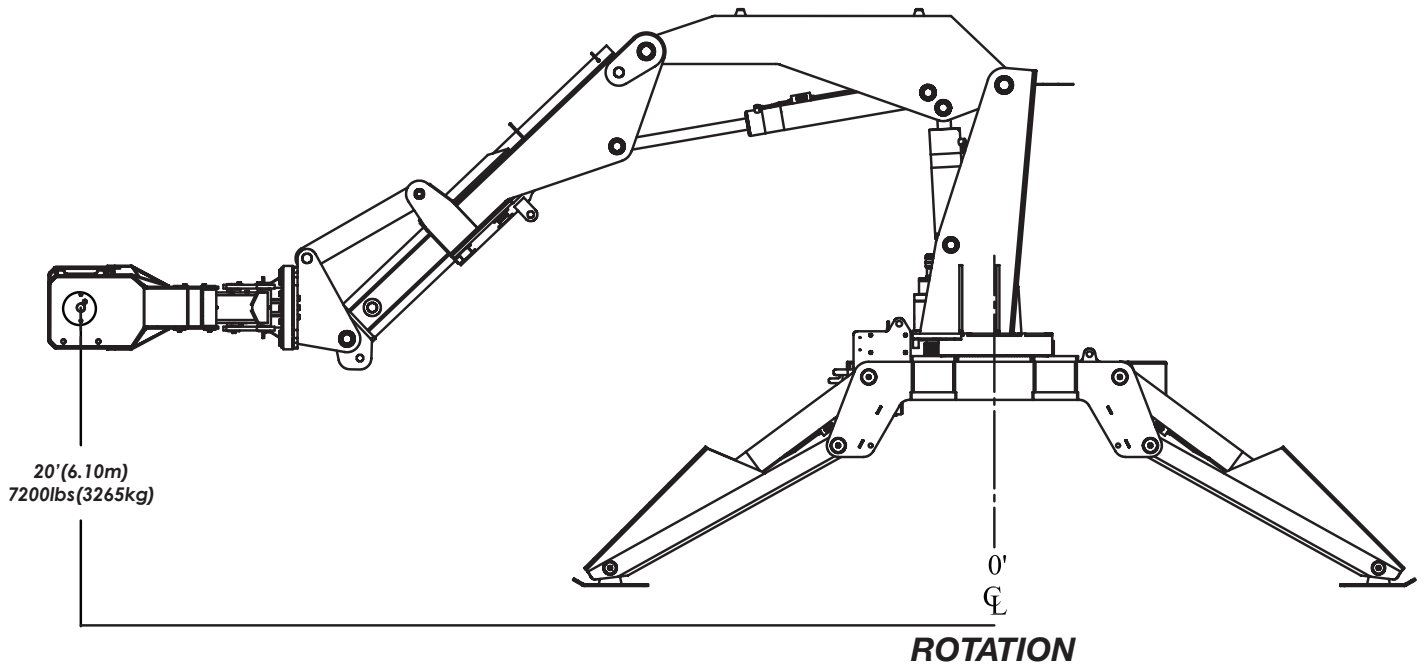
*[warranty@stellarindustries.com](mailto:warranty@stellarindustries.com)*

# Chapter 1 - Specifications

## CHAPTER CONTENTS

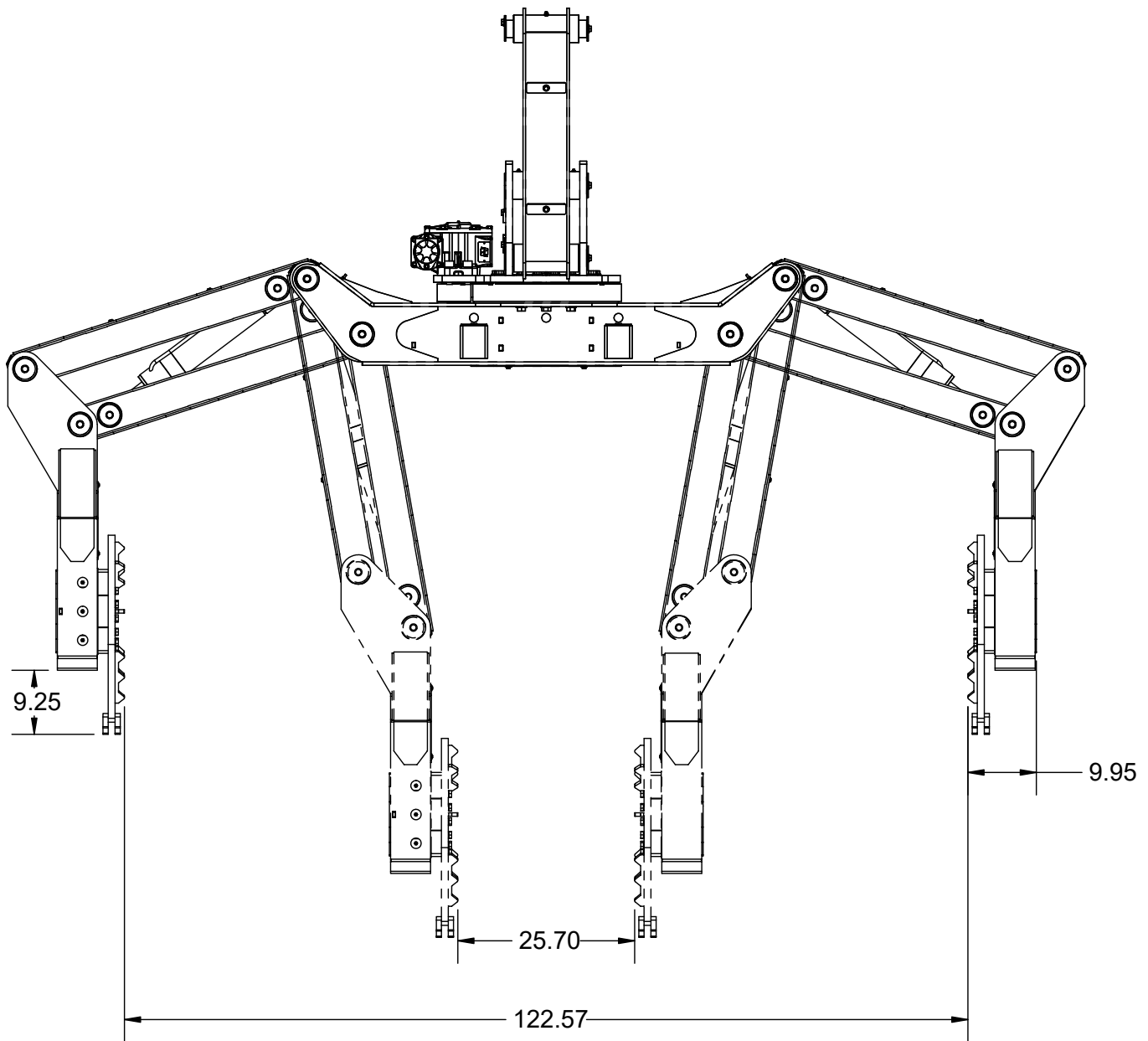
Model TM7120 Specifications .....	2
TM7120 Dimensional Layout .....	3
TM7120 Dimensional Layout (Continued).....	4
General Installation .....	5
Installer Notice .....	5
Torque Data Chart .....	6
Hydraulic Installation.....	7
Hydraulic Pressure Settings.....	8
Face Seal/O-Ring Size Chart.....	8
Hydraulic Kit w/Fixed Pads - PN 106124 .....	9
Hydraulic Kit w/Rotating Pads - PN 108688 .....	10
Hydraulic Kit w/Continuous Rotating Pads - PN 106491 .....	11
Tire Man TM7120 V3 Fixed- PN 108917 .....	12
Tire Man TM7120 V3 Fixed- PN 108917 Parts List .....	13
Tire Man TM7120 V3 Fixed- PN 108917 Parts List .....	14
Tire Man TM7120 V3 90 Deg - PN 108918.....	16
Tire Man TM7120 V3 90 Deg - PN 108918 Parts List.....	17
Tire Man TM7120 V3 90 Deg - PN 108918 Parts List.....	18
Tire Man TM7120 V3 Cont - PN 108919.....	20
Tire Man TM7120 V3 Cont - PN 108919 Parts List.....	21
Tire Man TM7120 V3 Cont - PN 108919 Parts List.....	22
Bearing Swing Drive - PN 76755 .....	23
Decal Placement - PN 54772.....	24

# Model TM7120 Specifications



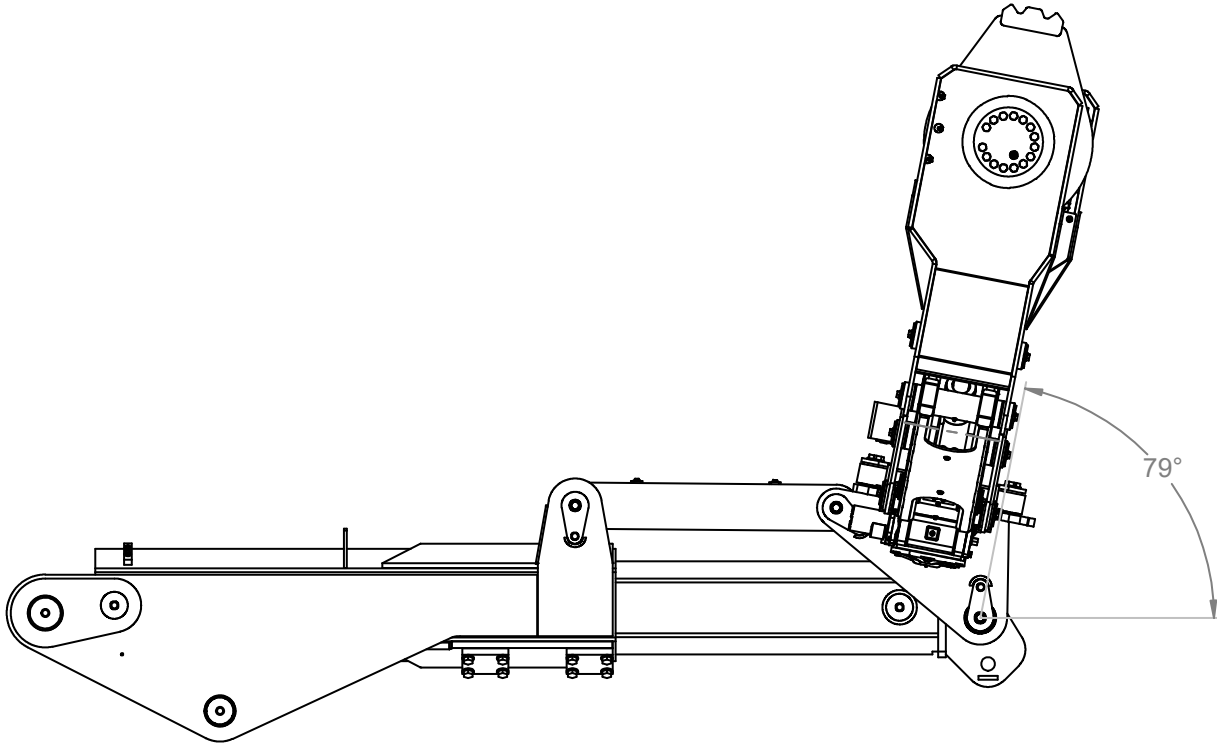
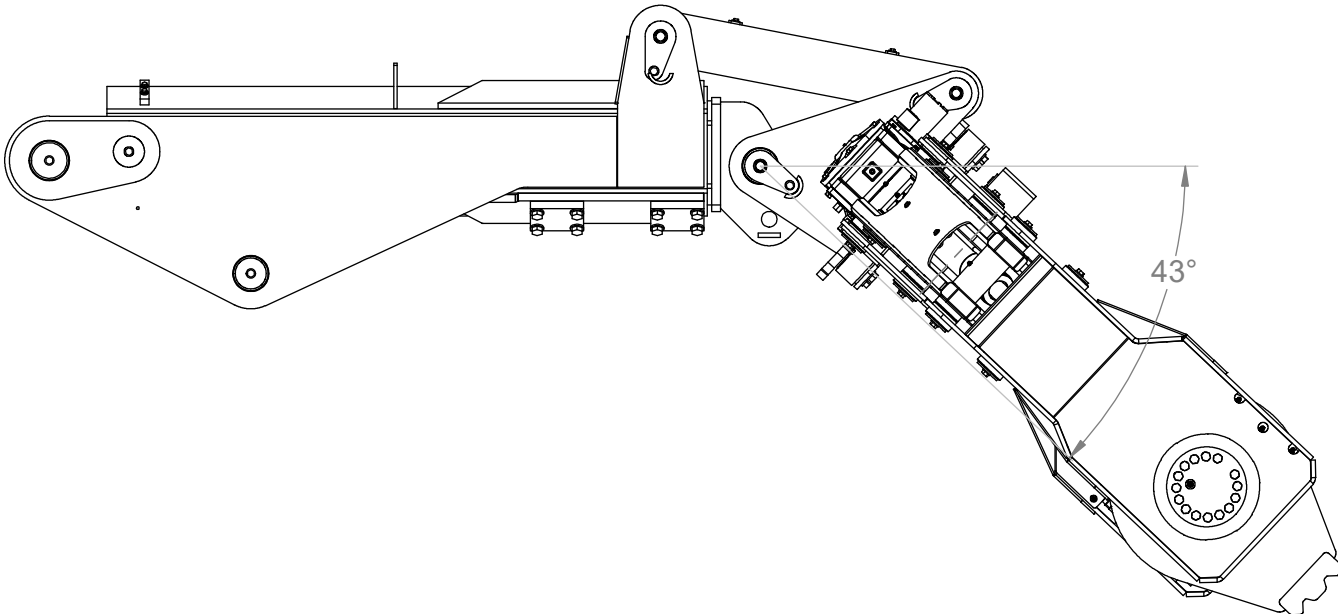
<b>Capacity:</b>	7,200 lbs @20 ft (3,265 kg @ 6.10m)
<b>Clamping Span:</b>	Fixed Pads - 28" to 125" (71 cm to 318 cm)
	Rotating Pads - 28" to 125" (71 cm to 318 cm)
	Cont. Rotating Pads - 26" to 123" (65 cm to 311 cm)
<b>Clamp Cylinders:</b>	3.5" (8.9 cm) bore with integral pilot operated counter balance valves
<b>Tilt Cylinder:</b>	Provided by crane extension boom
<b>Body Rotation:</b>	300° power
<b>Rotation System:</b>	Hourglass worm gear
<b>Clamping Pad Rotation:</b>	Continuous 360° power
<b>TireMan Tilt:</b>	+79° to -43°
<b>Hydraulic Controls:</b>	Incorporated with the crane controls
<b>Approx Shipping Weight:</b>	2,600 lbs (1,179 kg) FP Version
	3,150 lbs (1,429 kg) RP Version
	3,300 lbs (1,497 kg) CRP Version

# TM7120 Dimensional Layout



# TM7120 Dimensional Layout (Continued)

## TIREMAN TILT





## General Installation

This chapter is designed to serve as a general guide for the installation of a Stellar TM7120 on a Stellar Service Crane. Each installation is considered unique so certain portions of this chapter may or may not apply to your direct application. If a question should arise during the installation process, please contact Stellar Customer Service at (800) 321 3741.

This crane is designed for use with a Stellar Service Crane installed on a vehicle that meets the minimum chassis requirements of the crane. It is the installer's responsibility to assure that the unit is mounted on a platform that will support the maximum crane rating of this crane.

**⚠ WARNING** Do not install this crane/manipulator on a body not capable of handling the loads imposed on it. Failure to do so may result in serious injury or death.

## Installer Notice

According to Federal Law (49 cfr part 571), each final-stage manufacturer shall complete the vehicle in such a manner that it conforms to the standards in effect on the date of manufacture of the incomplete vehicle, the date of final completion, or a date between those two dates. This requirement shall, however, be superseded by any conflicting provisions of a standard that applies by its terms to vehicles manufactured in two or more stages.

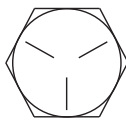
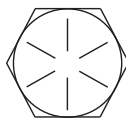
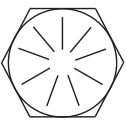
Therefore, the installer of Stellar® Cranes and Bodies is considered one of the manufacturers of the vehicle. As such a manufacturer, the installer is responsible for compliance with all applicable federal and state regulations. They are required to certify that the vehicle is in compliance with the Federal Motor Vehicle Safety Standards and other regulations issued under the National Traffic and Motor Vehicle Safety Act.

Please reference the Code of Federal Regulations, title 49 - Transportation, Volume 5 (400-999), for further information, or visit <http://www.gpoaccess.gov/nara/index.html> for the full text of Code of Federal Regulations.

## Torque Data Chart

When using the torque data in the chart, the following rules should be observed:

- Bolt manufacturer's particular specifications should be consulted when provided.
- Flat washers of equal strength must be used.
- All torque measurements are given in foot-pounds. To convert to inch-pounds, multiply by 12.
- Torque values specified are for bolts with residual oils or no special lubricants applied.
- Torque values for socket-head capscrews are the same as for Grade 8 capscrews.

		GRADE 5		GRADE 8		GRADE 9
						
Size (DIA-TPI)	Bolt DIA (Inches)	Plain (Ft-Lb)	Plated (Ft-Lb)	Plain (Ft-Lb)	Plated (Ft-Lb)	Plated (Ft-Lb)
5/16-18	0.3125	17	13	25	18	22
3/8-16	0.3750	31	23	44	33	39
7/16-14	0.4375	49	37	70	52	63
1/2-13	0.5000	75	57	105	80	96
9/16-12	0.5625	110	82	155	115	139
5/8-11	0.6250	150	115	220	160	192
3/4-10	0.7500	265	200	375	280	340
7/8-9	0.8750	395	295	605	455	549
1-8	1.000	590	445	910	680	823
1 1/8-7	1.1250	795	595	1290	965	1167
1 1/4-7	1.2500	1120	840	1815	1360	1646
1 3/8-6	1.3750	1470	1100	2380	1780	2158
1 1/2-6	1.500	1950	1460	3160	2370	2865

- **NOTICE** Do not use these values if a different torque value or tightening procedure is given for a specific application. Torque values listed are for general use only. Check tightness of fasteners periodically.
- Shear bolts are designed to fail under predetermined loads. Always replace shear bolts with identical grade.
- Fasteners should be replaced with the same or higher grade. If higher grade fasteners are used, these should only be tightened to the strength of the original.
- Tighten plastic insert or crimped steel-type lock nuts to approximately 110 percent of the dry torque values shown in the chart below, applied to the nut, not to the bolt head. Tighten toothed or serrated-type lock nuts to the full torque value. Note: "Lubricated" means coated with a lubricant such as engine oil, or fasteners with phosphate and oil coatings. "Dry" means plain or zinc plated without lubrication. Tighten lubricated bolts to approximately 80% of dry bolts.

# Hydraulic Installation

Never modify or alter any of the equipment, whether mechanical, electrical, or hydraulic, without Stellar Industries' approval.

**⚠ WARNING** Do not touch or grab any hoses that could be under pressure. Release system pressure before attempting to make adjustments or repairs.

Do not attempt service or repair when PTO is engaged.

Disassemble and assemble hydraulic components on a clean surface.

Clean all metal parts in a nonflammable cleaning fluid. Then lubricate all components to aid in assembly.

**⚠ WARNING** Hydraulic fluid expands when heated. This raises the pressure in an unventilated tank. Release the tank pressure before removing the cap completely. Failure to do so may cause the oil to shoot out of the tank very rapidly and cause severe burns.

**⚠ WARNING** Do not rely on the hydraulic fluid to support the boom or crane. If hydraulic fluid escapes, the boom or crane can fall immediately. Make sure the ground or blocking is supporting the boom before performing any maintenance or repair.

**NOTICE** Contaminants in a hydraulic system affect operation and will result in serious damage to the system components. Dirty hydraulic systems are a major cause of component failures.

If evidence of foreign particles is found in the hydraulic system, flush the system.

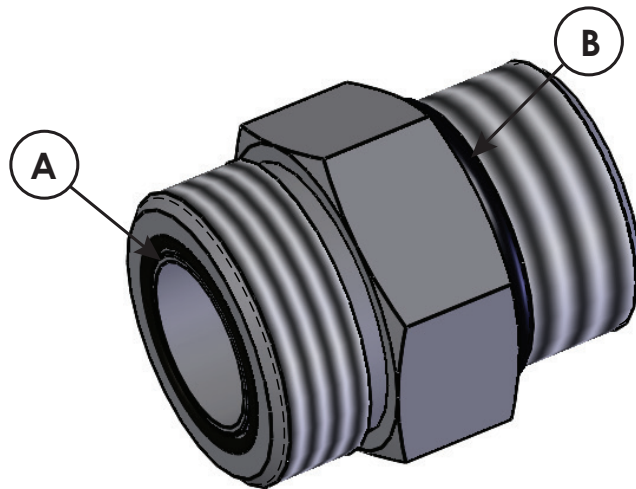
When installing metal hydraulic tubes, tighten all fittings finger tight. Then, in order, tighten the fittings at the rigid end, the adjustable end, and the mounting brackets. After tubes are mounted, install the hoses. Connect both ends of the hose with all fittings finger tight. Position the hose so it does not rub the machine or another hose and has a minimum of bending and twisting. Tighten fittings in both couplings.

Due to manufacturing methods, there is a natural curvature to a hydraulic hose. The hose should be installed so any bend is with this curvature.

## Hydraulic Pressure Settings

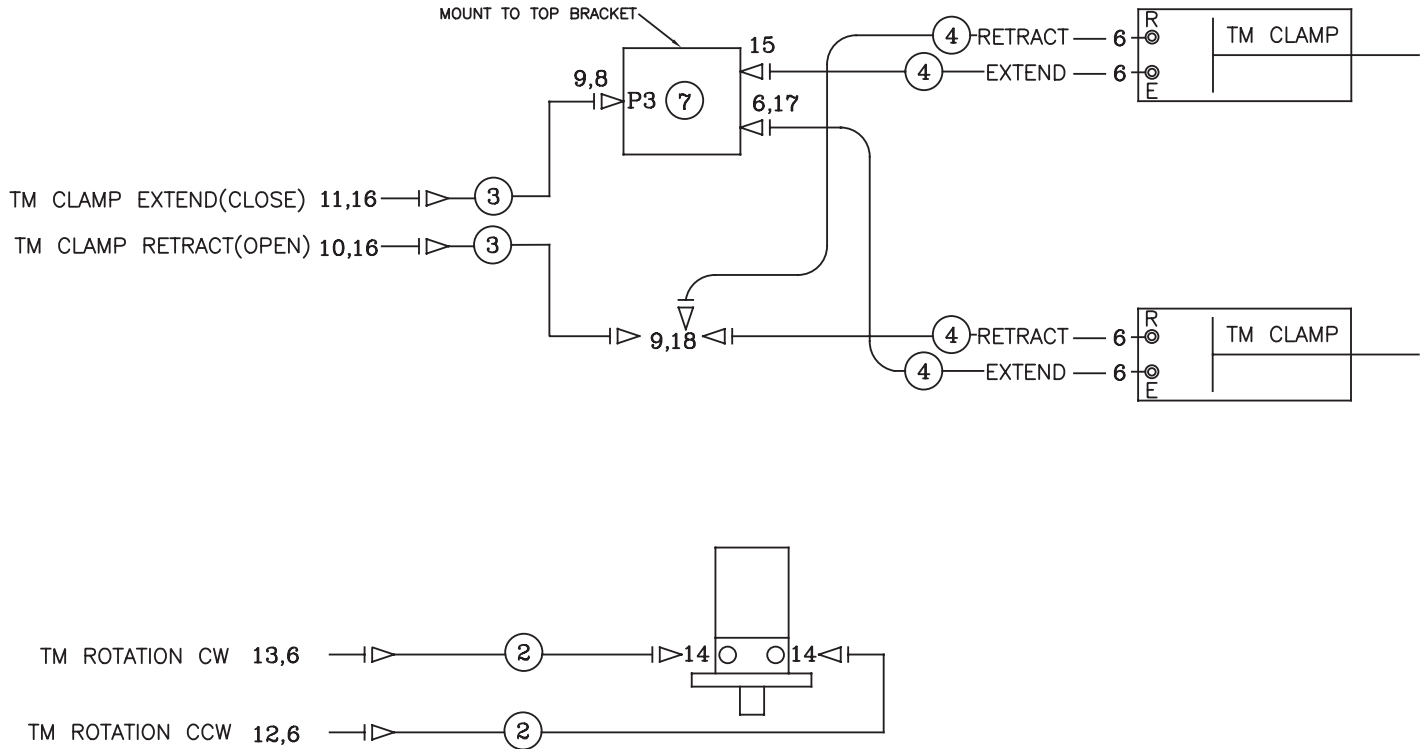
Main Relief 4600 psi			
		Pressure (psi)	
<b>Function</b>	<b>Flow (gpm)</b>	<b>Extend</b>	<b>Retract</b>
<i>Inner</i>	10.6	4400	2200
<i>Outer</i>	10.6	4400	2200
<i>Extension</i>	10.6	4400	4400
<i>Rotation</i>	10.6	2200	2200
<i>TM Rot</i>	6.6	2200	2200
<i>TM Pad Rot</i>	6.6	2500	2500
<i>TM Clamp</i>	6.6	4200	4200

## Face Seal/O-Ring Size Chart



Hose Size	Fitting Size	Face Seal (A) Stellar® PN	O-ring Boss (B) Stellar® PN
1/4"	#4	C2027	D1245
3/8"	#6	C2028	D1246
1/2"	#8	C2029	D1247
5/8"	#10	32223	D1248
3/4"	#12	D1244	D1249
1"	#16		D1250

# Hydraulic Kit w/Fixed Pads - PN 106124

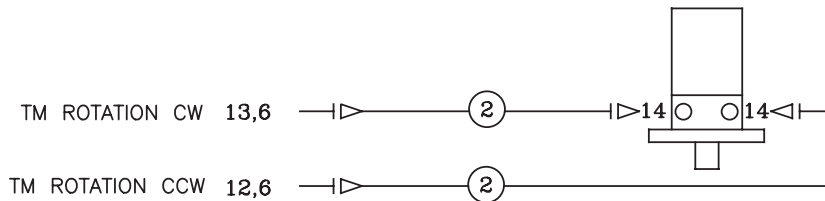
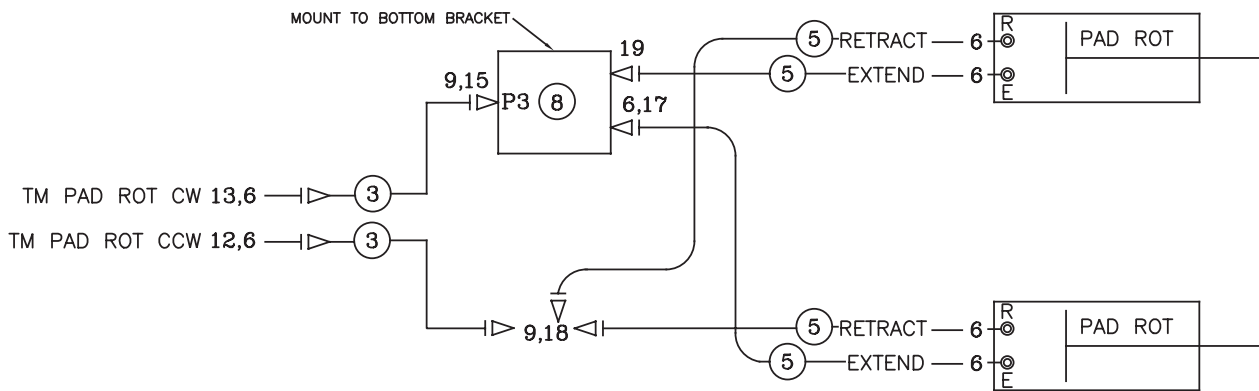
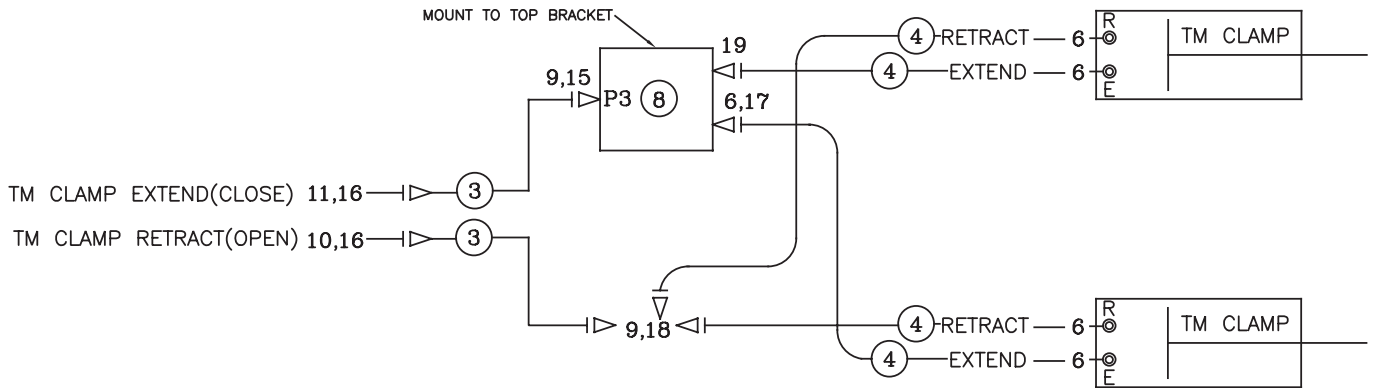


## PN 106124

18	D0107	FTG 6-6-6 MFS-MFS-FFSS BRANCH TEE	1
17	C2248	FTG 6-6 MFS-FFSS 90	1
16	C1854	FTG 6-8 MFS-MORB STRAIGHT	2
15	C0338	FTG 6-6 MFS-MAORB 90	1
14	C1855	FTG 6-10 MFS-MORB STRAIGHT	2
13	13555	QUICK CPLR FFH04-38-SAE-M	1
12	13554	QUICK CPLR FFH04-38-SAE-F	1
11	13557	QUICK CPLR FFN06-12SAE-M	1
10	13556	QUICK CPLR FFN06-12SAE-F	1
09	12171	FTG 6-6 MFS-MFS SWIVEL STRAIGHT	2
08	33743	FTG 6-6 FFSS-MORB STRAIGHT	1
07	35111	VALVE COMB DIV FD50-44-6T-N-44	1
06	0279	FTG 6-6 MFS-MORB STRAIGHT	7
05	53479	LOOM 1.00 SPIRAL WRAP POLYETHYLENE	4
04	79930	HOSE-HYD 0.25 X 48	4ref
03	79572	HOSE-HYD 0.25 X 85	2ref
02	55891	HOSE-HYD 0.25 X 77	2ref
01	106125	HOSE KIT, TM7120 V3 FIXED (incl:2-4)	1
ITEM	PART No.	DESCRIPTION	QTY

USE SPIRAL HOSE WRAP (53479) OVER HOSES THRU BODY ROTATION AREA

# Hydraulic Kit w/Rotating Pads - PN 108688

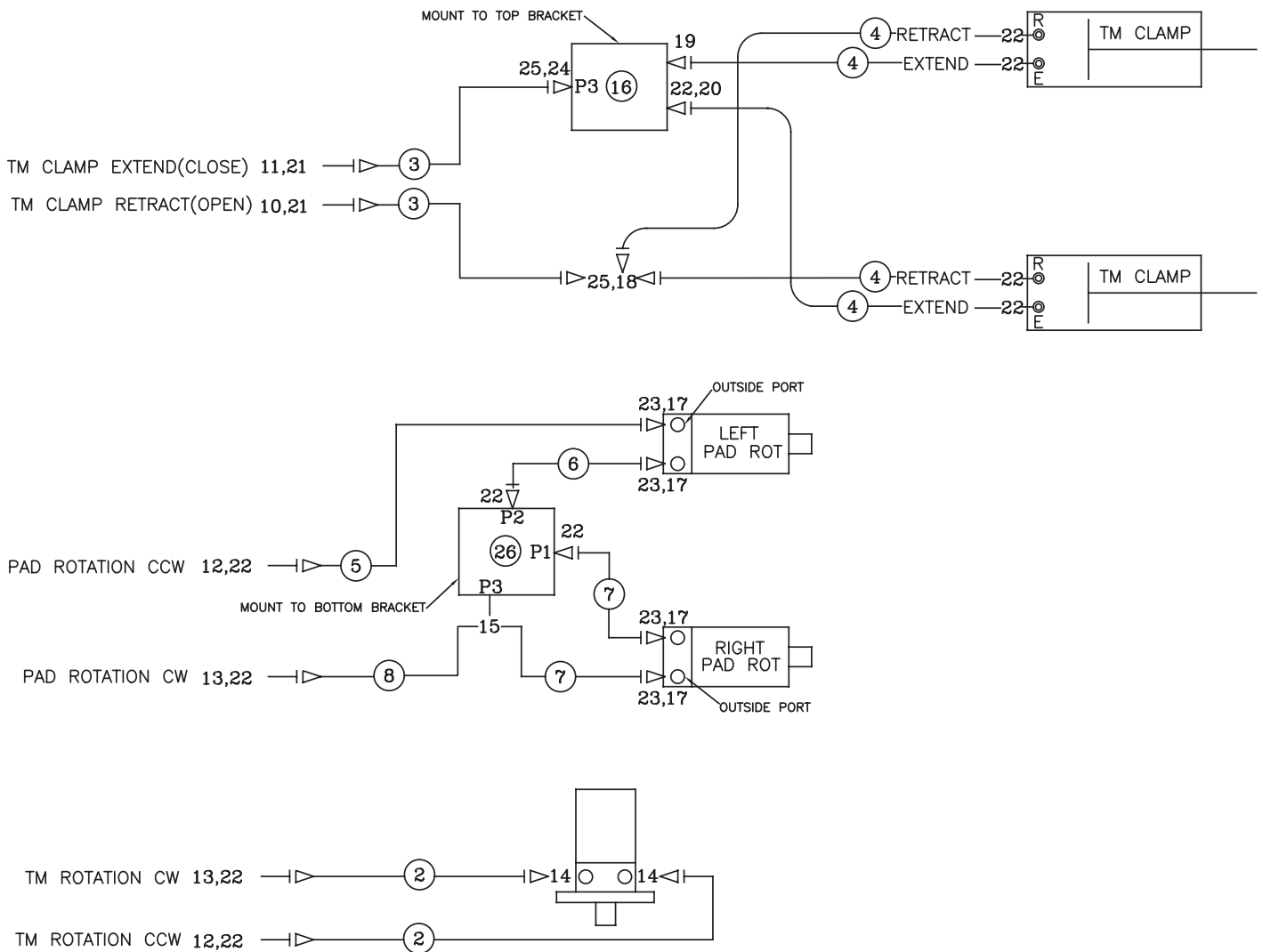


## PN 108688

19	C0338	FTG 6-6 MFS-MAORB 90	2
18	D0107	FTG 6-6-6 MFS-MFS-FFSS BRANCH TEE	2
17	C2248	FTG 6-6 MFS-FFSS 90	2
16	C1854	FTG 6-8 MFS-MORB STRAIGHT	2
15	33743	FTG 6-6 FFSS-MORB STRAIGHT	2
14	C1855	FTG 6-10 MFS-MORB STRAIGHT	2
13	13555	QUICK CPLR FFH04-38-SAE-M	2
12	13554	QUICK CPLR FFH04-38-SAE-F	2
11	13557	QUICK CPLR FFN06-12SAE-M	1
10	13556	QUICK CPLR FFN06-12SAE-F	1
09	12171	FTG 6-6 MFS-MFS SWIVEL STRAIGHT	4
08	35111	VALVE COMB DIV FD50-44-6T-N-44	2
07	53479	LOOM 1.00 SPIRAL WRAP POLYETHYLENE	4
06	0279	FTG 6-6 MFS-MORB STRAIGHT	14
05	79934	HOSE-HYD 0.25 X 105	4ref
04	79930	HOSE-HYD 0.25 X 48	4ref
03	79572	HOSE-HYD 0.25 X 85	4ref
02	55891	HOSE-HYD 0.25 X 77	2ref
01	108689	HOSE KIT, TM7120 V3 90 DEG (incl:2-5)	1
ITEM	PART No.	DESCRIPTION	QTY

USE SPIRAL HOSE WRAP (53479) OVER HOSES THRU BODY ROTATION AREA

# Hydraulic Kit w/Continuous Rotating Pads - PN 106491



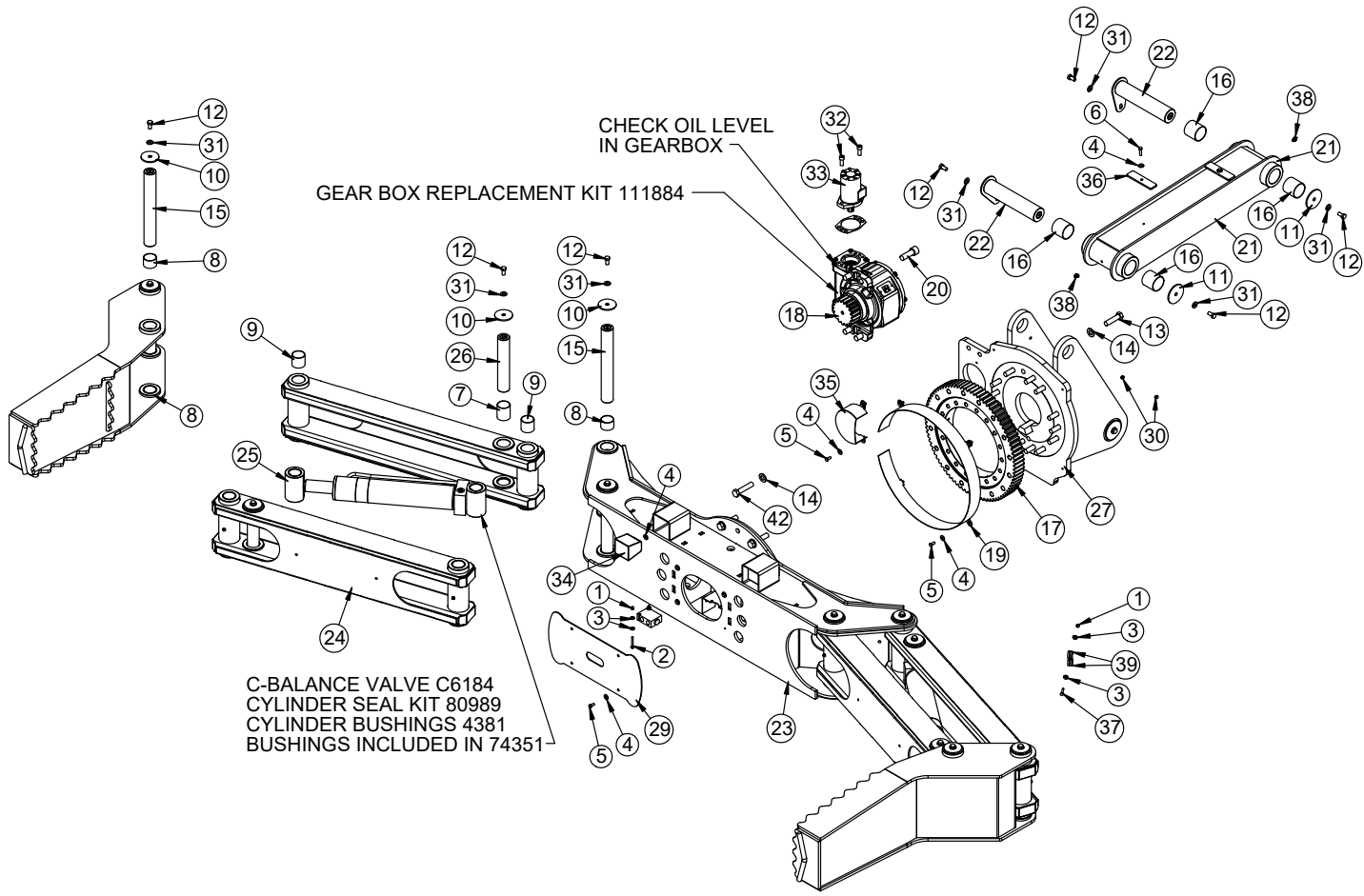
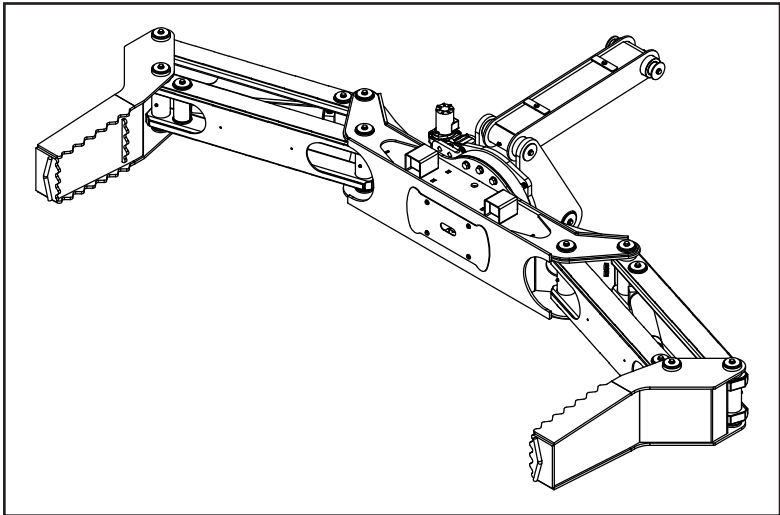
## PN 106491

ITEM	PART No.	DESCRIPTION	QTY
13	13555	QUICK CPLR FFH04-38-SAE-M	2
12	13554	QUICK CPLR FFH04-38-SAE-F	2
11	13557	QUICK CPLR FFN06-12SAE-M	1
10	13556	QUICK CPLR FFN06-12SAE-F	1
09	53479	LOOM 1.00 SPIRAL WRAP POLYETHYLENE	4
08	106495	HOSE-HYD 0.25 X 93	1ref
07	106494	HOSE-HYD 0.25 X 112	2ref
06	106493	HOSE-HYD 0.25 X 112	1ref
05	79931	HOSE-HYD 0.25 X 205	1ref
04	79930	HOSE-HYD 0.25 X 48	4ref
03	79572	HOSE-HYD 0.25 X 85	2ref
02	55891	HOSE-HYD 0.25 X 77	2ref
01	106492	HOSE KIT, TM7120 V2 CRP (incl:2-8)	1

ITEM	PART No.	DESCRIPTION	QTY
26	105063	VALVE SOLND 2 POS 3 WAY SV10-34-BT-N-12DR	1
25	12171	FTG 6-6 MFS-MFS SWIVEL STRAIGHT	2
24	33743	FTG 6-6 FFSS-MORB STRAIGHT	1
23	D1193	FTG 6-6 MFS-MAORB 45	4
22	0279	FTG 6-6 MFS-MORB STRAIGHT	11
21	C1854	FTG 6-8 MFS-MORB STRAIGHT	2
20	C2248	FTG 6-6 MFS-FFSS 90	1
19	C0338	FTG 6-6 MFS-MAORB 90	1
18	D0107	FTG 6-6-6 MFS-MFS-FFSS BRANCH TEE	1
17	C1111	FTG 10-6 MORB-FORB STRAIGHT REDUCER	4
16	35111	VALVE COMB DIV FD50-44-6T-N-44	1
15	C2345	FTG 6-6-6 MFS-MFS-MAORB TEE	1
14	C1855	FTG 6-10 MFS-MORB STRAIGHT	2

USE SPIRAL HOSE WRAP (53479) OVER HOSES THRU BODY ROTATION AREA

# Tire Man TM7120 V3 Fixed- PN 108917





# Tire Man TM7120 V3 Fixed- PN 108917 Parts List

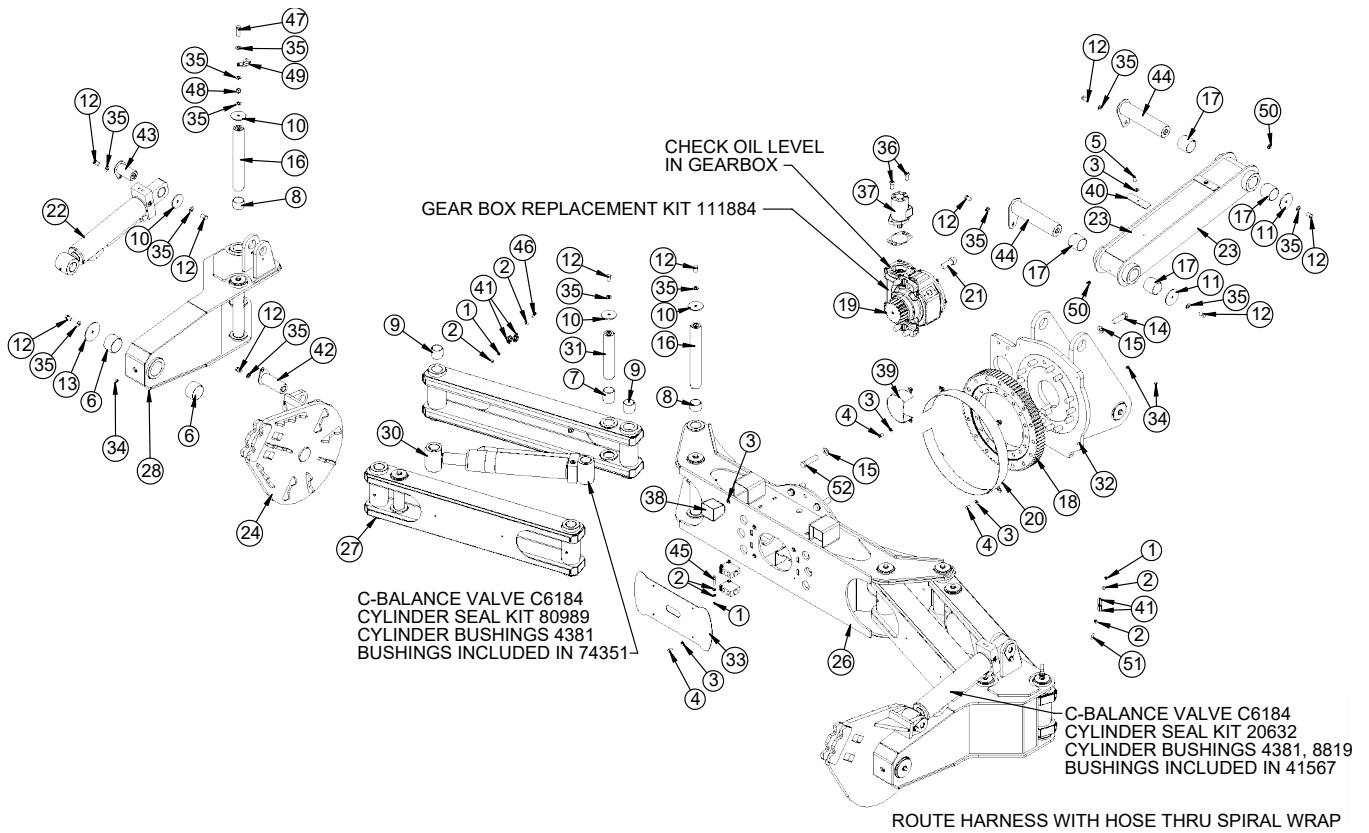
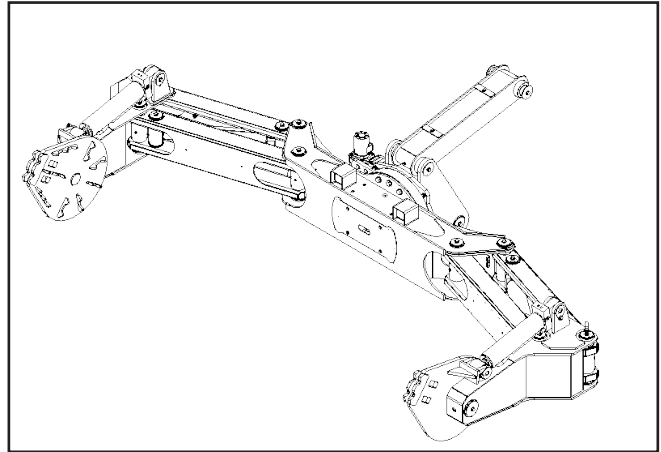
PN 109817			
ITEM	PART	DESCRIPTION	QTY
1	0333	NUT 0.25-20 HHGR5 NYLOC	4
2	0481	CAP SCR 0.25-20X2.00 HHGR5	2
3	0340	WASHER 0.25 USS FLAT	8
4	0343	WASHER 0.31 USS FLAT	14
5	0420	CAP SCR 0.31-18X0.75 HHGR5	10
6	0485	CAP SCR 0.31-18X1.25 HHGR5	2
7	4379	BUSHING BPC32DXR40 2.00X2.50	8
8	4380	BUSHING BPC32DXR24 2.00X1.50	16
9	4381	BUSHING BPC32DXR32 2.00X2.00	16
10	5145	PIN CAP 0.56X3.00X0.19 YZ	24
11	8377	PIN CAP 0.56X3.50X0.19 YZ	3
12	10172	CAP SCR 0.50-13X1.00 HHGR8	30
13	17148	CAP SCR 0.75-10X3.00 HHGR9	14
14	17150	WASHER 0.75 SAE FLAT YELLOW GR9	26
15	17315CR	PIN 2.00X14.75 D&T ZC	8
16	17320	BUSHING BPC40DXR40 2.50X2.50	4
17	105773	BEARING TURNTABLE TM7120 V3	1
18	105772	GEAR BOX TM7120 V3	1
19	29725	GUARD TTB TM6120C LZR	1
20	30495	CAP SCR 0.88-9X2.50 SH	4
21	53510	LINK BASE TM7120	1
22	54385CR	PIN TEAR DROP 2.50X11.81 ZC	3
23	105625	BODY TM7120 V3	1
24	74345	LINK TM7120 V2	4
25	74351	CYLINDER 3.50X13.25	2
26	74650CR	PIN 2.00X10.63 D&T	4
27	105774	BASE TM7120 V3	1
28	76762	ARM TM7120 V2	2
29	105979	PLATE COVER BODY TM7120 V3	1
30	C1592	ZERK 1/8 NPT STRAIGHT	10
31	D0790	WASHER 0.50 SAE FLAT YELLOW GR8	30
32	D1307	CAP SCR 0.50-13X1.25 SH	2
33	D1453	MOTOR HYD EATON 101-2493	1
34	78431	LIGHT FLOOD LED 3.2X2.9 850LM 16W 10-30V	2
35	108925	GUARD PINION TM7120 V3 PC BLACK	1
36	18042	HOSE CLAMP TM14160 PC WHITE	2
37	0220	CAP SCR 0.25-20X1.50 HHGR5	2
38	C1597	ZERK 1/8 NPT 90 DEG	2
39	7623	CLAMP 1.00 RUBBER	4
40	21151	GASKET MOTOR 008-10056-1	1
41	35111	VALVE COMB DIV FD50-44-6T-N-44	1
42	22278	CAP SCR 0.75-10X3.50 HHGR9	12

# Tire Man TM7120 V3 Fixed- PN 108917 Parts List

ITEMS NOT SHOWN		
PART	DESCRIPTION	QTY
21409	WIRE HARNESS FLOOD LIGHT TM14160	1
54772	DECAL KIT TM7120	1
106124	HYD KIT TM7120 V3 FIXED	1
D0240	FTG 4-2 CPRSN-MP 90	1
D1810	TBE AIR SAEJ844 TYPE A .25 (RM)	0.67 FT
D1345	FTG 4-2 CPRSN-MP STRAIGHT	1
22161	FTG 2-2 FP-FP COUPLER STRAIGHT BRASS	1
56589	ZERK 1/8 NPT STRAIGHT LONG THREAD	1
9752	CONNECT 2 PIN SHROUD PACKARD	2
9756	CONTACT M TERM SHROUD 18-20	4
8384	CABLE SEAL 18-20 PACKARD 39000	4
90382	MANUAL TM7120	1
REV. INITIAL RELEASE		

**This page left intentionally blank.**

# Tire Man TM7120 V3 90 Deg - PN 108918



# Tire Man TM7120 V3 90 Deg - PN 108918 Parts List

PN 108918			
ITEM	PART	DESCRIPTION	QTY
1	0333	NUT 0.25-20 HHGR5 NYLOC	10
2	0340	WASHER 0.25 USS FLAT	20
3	0343	WASHER 0.31 USS FLAT	14
4	0420	CAP SCR 0.31-18X0.75 HHGR5	10
5	0485	CAP SCR 0.31-18X1.25 HHGR5	2
6	0865	BUSHING BPC48DXR32 3.00X2.00	4
7	4379	BUSHING BPC32DXR40 2.00X2.50	8
8	4380	BUSHING BPC32DXR24 2.00X1.50	16
9	4381	BUSHING BPC32DXR32 2.00X2.00	16
10	5145	PIN CAP 0.56X3.00X0.19 YZ	26
11	8377	PIN CAP 0.56X3.50X0.19 YZ	3
12	10172	CAP SCR 0.50-13X1.00 HHGR8	36
13	13315	PIN CAP 0.56X4.00X0.19 YZ	2
14	17148	CAP SCR 0.75-10X3.00 HHGR9	14
15	17150	WASHER 0.75 SAE FLAT YELLOW GR9	26
16	17315CR	PIN 2.00X14.75 D&T ZC	8
17	17320	BUSHING BPC40DXR40 2.50X2.50	4
18	105773	BEARING TURNTABLE TM7120 V3	1
19	105772	GEAR BOX TM7120 V3	1
20	29725	GUARD TTB TM6120C LZR	1
21	30495	CAP SCR 0.88-9X2.50 SH	4
22	41567	CYLINDER 3.50X13.25	2
23	53510	LINK BASE TM7120	1
24	67818	PAD TM7120 SS ROT PADS	1
25	67819	PAD TM7120 CS ROT PADS	1
26	105625	BODY TM7120 V3	1
27	74345	LINK TM7120 V2	4
28	74347	ARM TM7120 CS PAD ROT V2	1
29	74348	ARM TM7120 SS PAD ROT V2	1
30	74351	CYLINDER 3.50X13.25	2
31	74650CR	PIN 2.00X10.63 D&T	4
32	105774	BASE TM7120 V3	1
33	105979	PLATE COVER BODY TM7120 V3	1
34	C1592	ZERK 1/8 NPT STRAIGHT	12
35	D0790	WASHER 0.50 SAE FLAT YELLOW GR8	42
36	D1307	CAP SCR 0.50-13X1.25 SH	2
37	D1453	MOTOR HYD EATON 101-2493	1
38	78431	LIGHT FLOOD LED 3.2X2.9 850LM 16W 10-30V	2
39	108925	GUARD PINION TM7120 V3 PC BLACK	1
40	18042	HOSE CLAMP TM14160 PC WHITE	2
41	7623	CLAMP 1.00 RUBBER	12
42	41634CR	PIN TEAR DROP 2.00X5.50 ZC	2

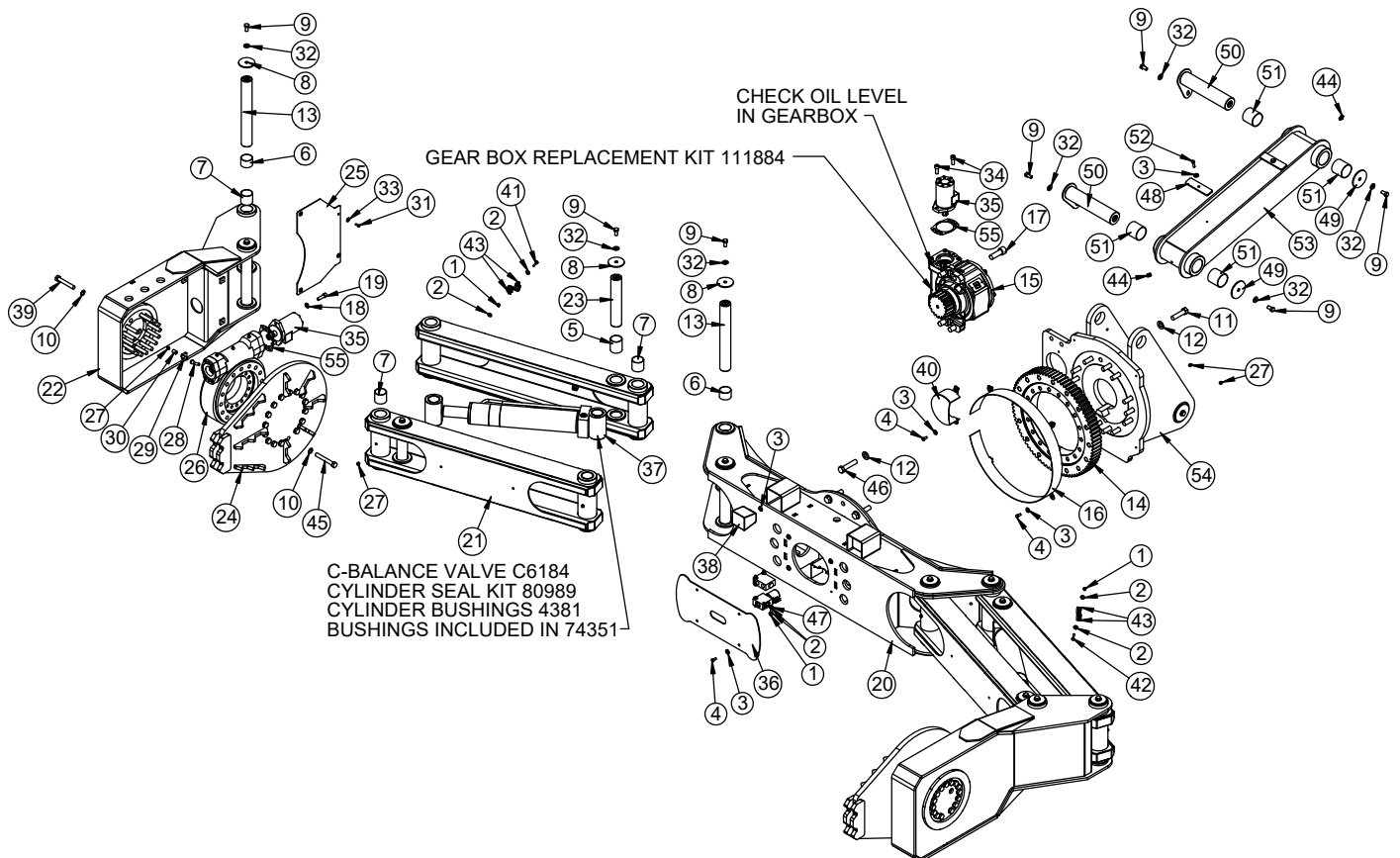
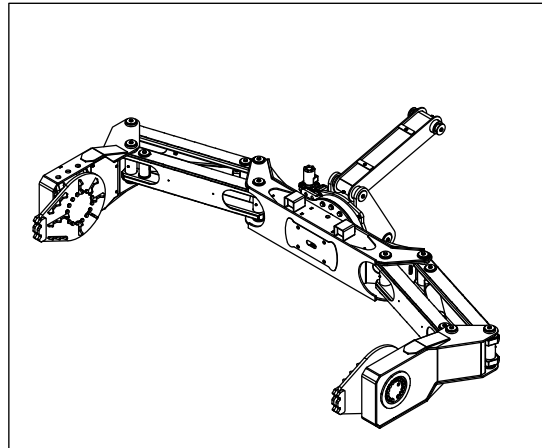
# Tire Man TM7120 V3 90 Deg - PN 108918 Parts List

PN 108918			
ITEM	PART	DESCRIPTION	QTY
43	41632CR	PIN TEAR DROP 2.00X3.88 ZC	2
44	54385CR	PIN TEAR DROP 2.50X11.81 ZC	3
45	0481	CAP SCR 0.25-20X2.00 HHGR5	4
46	0437	CAP SCR 0.25-20X1.25 HHGR5	4
47	8833	CAP SCR 0.50-13X2.00 HHGR8	2
48	5468	NUT 0.50-13 HHGR8 NYLOC	2
49	C5586	CLAMP 1.38	2
50	C1597	ZERK 1/8 NPT 90 DEG	2
51	0220	CAP SCR 0.25-20X1.50 HHGR5	2
52	22278	CAP SCR 0.75-10X3.50 HHGR9	12
53	35111	VALVE COMB DIV FD50-44-6T-N-44	2
54	21151	GASKET MOTOR 008-10056-1	1
REV. INITIAL RELEASE			

ITEMS NOT SHOWN		
PART	DESCRIPTION	QTY
21409	WIRE HARNESS FLOOD LIGHT TM14160	1
54772	DECAL KIT TM7120	1
108688	HYD KIT TM7120 V3 90 DEG	1
D0240	FTG 4-2 CPRSN-MP 90	1
D1810	TBE AIR SAEJ844 TYPE A .25 (RM)	0.67 FT
D1345	FTG 4-2 CPRSN-MP STRAIGHT	1
22161	FTG 2-2 FP-FP COUPLER STRAIGHT BRASS	1
56589	ZERK 1/8 NPT STRAIGHT LONG THREAD	1
9752	CONNECT 2 PIN SHROUD PACKARD	2
9756	CONTACT M TERM SHROUD 18-20	4
8384	CABLE SEAL 18-20 PACKARD 39000	4
90382	MANUAL TM7120	1
REV. INITIAL RELEASE		

**This page left intentionally blank.**

# Tire Man TM7120 V3 Cont - PN 108919



**NOTE:**  
**ROUTE HARNESS WITH HOSE THRU SPIRAL WRAP.**



# Tire Man TM7120 V3 Cont - PN 108919 Parts List

PN 108919			
ITEM	PART	DESCRIPTION	QTY
1	0333	NUT 0.25-20 HHGR5 NYLOC	10
2	0340	WASHER 0.25 USS FLAT	20
3	0343	WASHER 0.31 USS FLAT	14
4	0420	CAP SCR 0.31-18X0.75 HHGR5	10
5	4379	BUSHING BPC32DXR40 2.00X2.50	8
6	4380	BUSHING BPC32DXR24 2.00X1.50	16
7	4381	BUSHING BPC32DXR32 2.00X2.00	16
8	5145	PIN CAP 0.56X3.00X0.19 YZ	24
9	10172	CAP SCR 0.50-13X1.00 HHGR8	30
10	12152	WASHER 0.63 FLAT SP	62
11	17148	CAP SCR 0.75-10X3.00 HHGR9	14
12	17150	WASHER 0.75 SAE FLAT YELLOW GR9	26
13	17315CR	PIN 2.00X14.75 D&T ZC	8
14	105773	BEARING TURNTABLE TM7120 V3	1
15	105772	GEAR BOX TM7120 V3	1
16	29725	GUARD TTB TM6120C LZR	1
17	30495	CAP SCR 0.88-9X2.50 SH	4
18	42788	WASHER 0.44 SAE FLAT YELLOW GR8	4
19	62484	CAP SCR 12MMX40MM SH	4
20	105625	BODY TM7120 V3	1
21	74345	LINK TM7120 V2	4
22	74437	ARM TM7120 V2 PAD ROT PADS	2
23	74650CR	PIN 2.00X10.63 D&T	4
24	76178	PAD TM7120 V2 ROT PADS TEARDROP CONT	2
25	76180	COVER TM7120 V2 RP	2
26	76755	BEARING SWING DRIVE 9 IN ENCLOSED	2
27	C1592	ZERK 1/8 NPT STRAIGHT	12
28	C2239	FTG 2-2 MP-FP STREET ELBOW 90	2
29	C2250	FTG 2-2X1.50 MP-MP NIPPLE STRAIGHT BLK	2
30	C2256	FTG CPLR PIPE 0.13	2
31	C6021	CAP SCR 0.25-20X0.75 BTNHD SS	8
32	D0790	WASHER 0.50 SAE FLAT YELLOW GR8	30
33	D0917	WASHER 0.25 FLAT SS	8
34	D1307	CAP SCR 0.50-13X1.25 SH	2
35	D1453	MOTOR HYD EATON 101-2493	3
36	105979	PLATE COVER BODY TM7120 V3	1
37	74351	CYLINDER 3.50X13.25	2
38	78431	LIGHT FLOOD LED 3.2X2.9 850LM 16W 10-30V	2
39	77555	CAP SCR 0.63-11X4.00 HHGR8 W/RED PATCH	30
40	108925	GUARD PINION TM7120 V3 PC BLACK	1
41	0437	CAP SCR 0.25-20X1.25 HHGR5	4

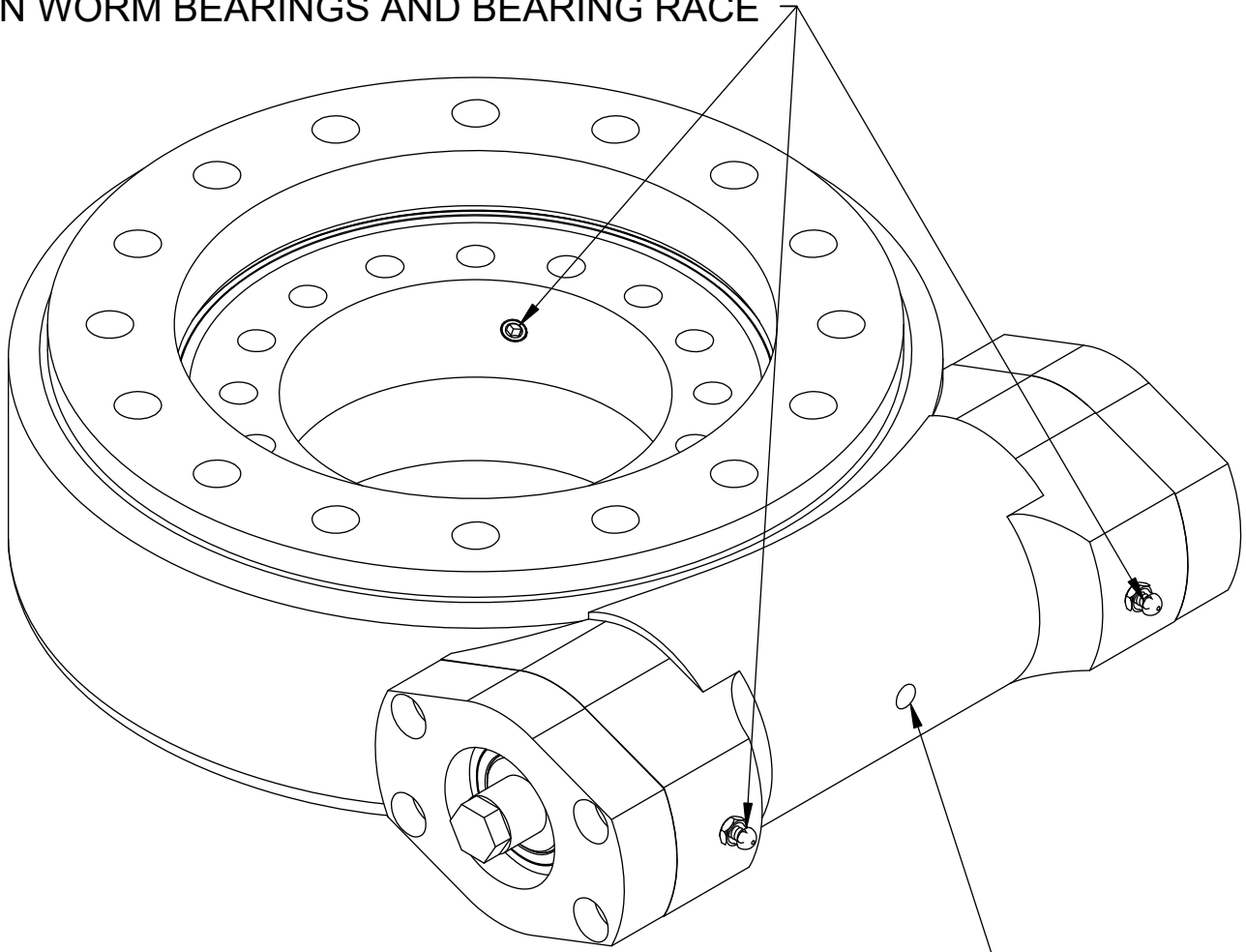
# Tire Man TM7120 V3 Cont - PN 108919 Parts List

PN 108919			
ITEM	PART	DESCRIPTION	QTY
42	0220	CAP SCR 0.25-20X1.50 HHGR5	2
43	7623	CLAMP 1.00 RUBBER	12
44	C1597	ZERK 1/8 NPT 90 DEG	2
45	8522	CAP SCR 0.63-11X4.50 HHGR8	32
46	22278	CAP SCR 0.75-10X3.50 HHGR9	12
47	0481	CAP SCR 0.25-20X2.00 HHGR5	4
48	18042	HOSE CLAMP TM14160 PC WHITE	2
49	8377	PIN CAP 0.56X3.50X0.19 YZ	3
50	54385CR	PIN TEAR DROP 2.50X11.81 ZC	3
51	17320	BUSHING BPC40DXR40 2.50X2.50	4
52	0485	CAP SCR 0.31-18X1.25 HHGR5	2
53	53510	LINK BASE TM7120	1
54	105774	BASE TM7120 V3	1
55	21151	GASKET MOTOR 008-10056-1	3
56	105063	VALVE SOLND 2 POS 3 WAY SV10-34-6T-N-12DR	1
57	35111	VALVE COMB DIV FD50-44-6T-N-44	1
REV. A (R873)			

ITEMS NOT SHOWN		
PART	DESCRIPTION	QTY
21409	WIRE HARNESS FLOOD LIGHT TM14160	1
106349	WIRE HRNS EXT 7FT 2P WP TO DT	1
54772	DECAL KIT TM7120	1
106491	HYD KIT TM7120 V3 CONT	1
D0240	FTG 4-2 CPRSN-MP 90	1
D1810	TBE AIR SAEJ844 TYPE A .25 (RM)	0.67 FT
D1345	FTG 4-2 CPRSN-MP STRAIGHT	1
22161	FTG 2-2 FP-FP COUPLER STRAIGHT BRASS	1
56589	ZERK 1/8 NPT STRAIGHT LONG THREAD	1
9752	CONNECT 2 PIN SHROUD PACKARD	2
9756	CONTACT M TERM SHROUD 18-20	4
8384	CABLE SEAL 18-20 PACKARD 39000	4
90382	MANUAL TM7120	1

# Bearing Swing Drive - PN 76755

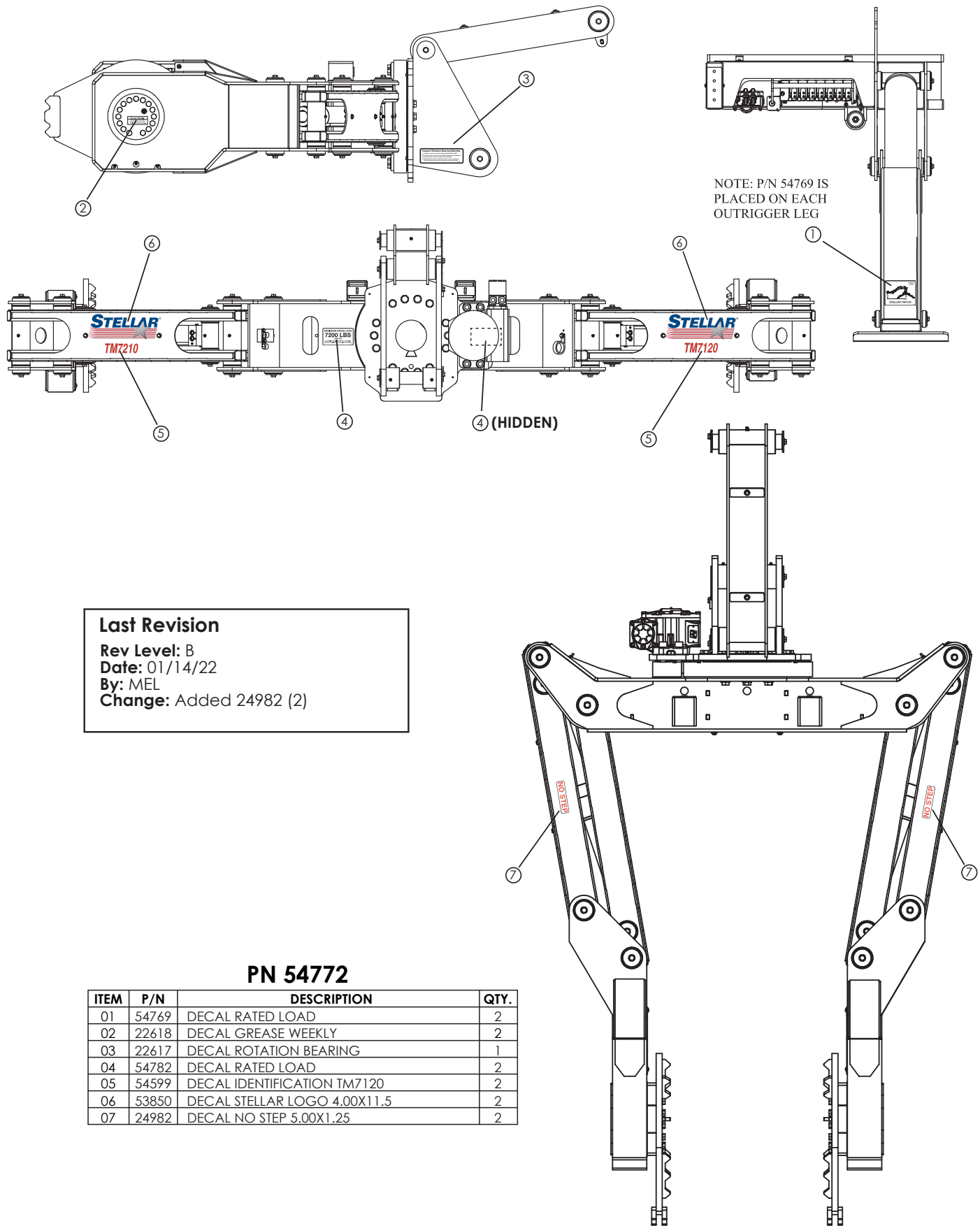
USE EP2 LITHIUM COMPLEX GREASE, STELLAR PN 78090  
ON WORM BEARINGS AND BEARING RACE



USE MOLY GREASE 936SF HEAVY, STELLAR PN 4460  
ON WORM AND BEARING GEAR TEETH

PN 76755			
ITEM	PART	DESCRIPTION	QTY
1	67866	BEARING AND SEAL KIT 9IN/14IN/17IN TTB KNMTS AFTER 2006	1
2	128930	WORM 9" ENCLOSED KINEMATICS	1
3	67864	END CAP 9IN/14IN/17/IN/25IN KNMTS AFTER 2006	1
4	67863	SHIM KIT 6000 KINEMATICS W17B02 AFTER 2006	1

# Decal Placement - PN 54772



**Last Revision**  
 Rev Level: B  
 Date: 01/14/22  
 By: MEL  
 Change: Added 24982 (2)

## PN 54772

ITEM	P/N	DESCRIPTION	QTY.
01	54769	DECAL RATED LOAD	2
02	22618	DECAL GREASE WEEKLY	2
03	22617	DECAL ROTATION BEARING	1
04	54782	DECAL RATED LOAD	2
05	54599	DECAL IDENTIFICATION TM7120	2
06	53850	DECAL STELLAR LOGO 4.00X11.5	2
07	24982	DECAL NO STEP 5.00X1.25	2





Subject to Change without Notification.  
© 2024 Stellar Industries, Inc.