

Serial Number Guide

Example Serial Number Plate	2
Month Table	3
Crane and Manipulator Model Table.....	4
Hooklift and Cable Hoist Model Table.....	5
Serial Plate General Locations	6

Example Serial Number Plate



Explanation of example serial number:

J GK 13 A30

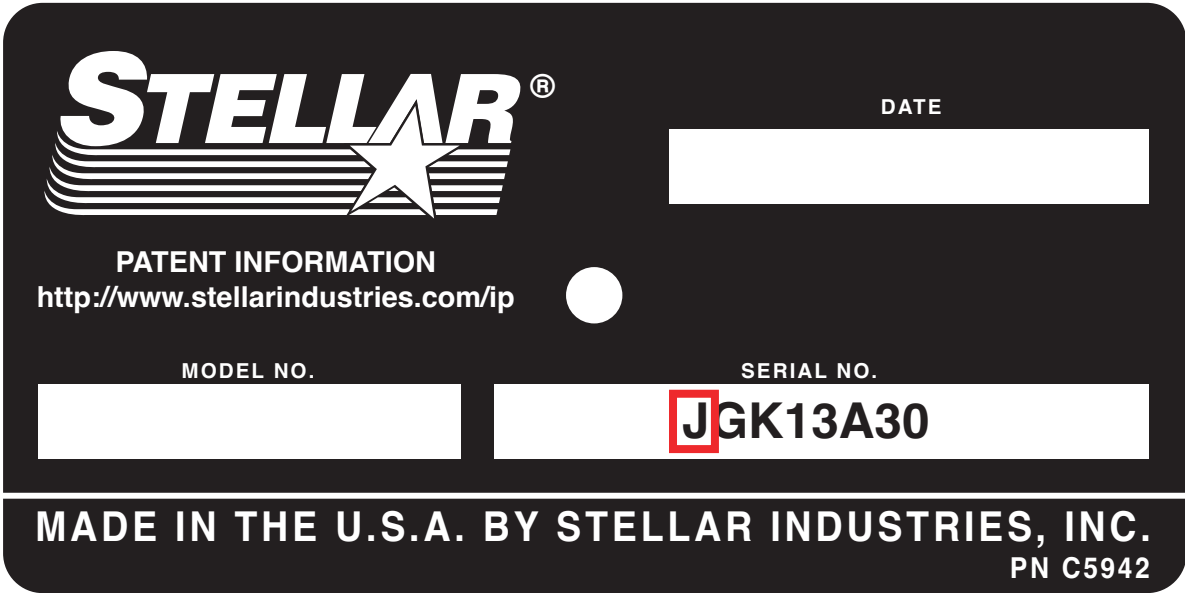
J = Month (October - See Month Table for details)

GK = Model (Crane 17000 - See Model Tables for details)

13 =YEAR (2013)

Month Table

Letter	Month
A	January
B	February
C	March
D	April
E	May
F	June
G	July
H	August
I	September
J	October
K	November
L	December



Crane and Manipulator Model Table

Code	Model
AJ	Crane 2120
AK	Crane 9000
AL	Crane 3200
AS	TM12154
AV	Crane 6000
BA	Crane 2620
BB	Crane 7500
BH	TM12154
BI	TM6120
BJ	TM3107C
BK	Crane 15000
BS	Crane 23000
BT	TM12154
BX	Crane 6620
BZ	Crane 2200
CE	Crane 9620
CF	Crane 5520
CH	Crane 10620
CI	Crane 28000
CJ	TM14160
CS	Crane EC2000
CU	Crane 5728
CW	Crane 3315
CX	Crane 3315
CY	Crane 6002H
DA	Crane 4500
DI	Crane 10628
DJ	TM6120RP
DK	Crane 4420
DQ	Crane 9628
DR	Crane EC2000
DS	Crane 14528
EA	Crane 9000
EH	Crane 6628

Code	Model
ES	TM4110
EU	TM6160
FA	TM12154
FB	Crane EC3200
FC	Crane 12628
FW	Crane EC4000-20
FX	Crane EC4000-16
FY	Crane EC5000-20
GB	Crane 9000
GC	TM4110 ROT PADS
GG	Crane 12621
GH	Crane 6000MH
GJ	TM7120 ROT PADS
GK	Crane 17000
GM	Crane 7621
GN	Crane 7628
GO	Crane EC6000
GQ	Crane 5521
GV	TM20165
GX	Crane 6521
HB	Crane 7621
HC	Crane 12630
HD	Crane 3315
HE	Crane 4421
HF	Crane 6000
HG	Crane 14530
HH	Crane 12621
HI	Crane 10621
HJ	Crane 7630
HK	Crane 10630
HL	Crane 13500
HM	TM6116
HN	Crane 9621
HO	Crane 14530

Code	Model
HQ	Crane TC13
HR	Crane TC23
HS	Crane TC33
HT	Crane TC38
IK	Crane 7630 HSS
IL	Crane 7621 HSS
IM	Crane 8621 HSS
IN	Crane 8630 HSS
IR	CRANE 9621 HSS
IS	CRANE 9630 HSS
IT	CRANE 10621 HSS
IU	CRANE 10630 HSS
IV	CRANE 12621 HSS
IW	CRANE 12630 HSS
IX	CRANE 14530 HSS



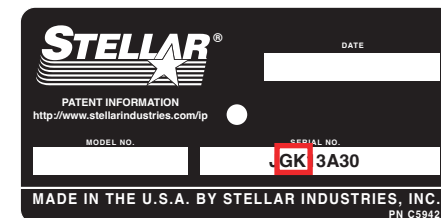
Hooklift and Cable Hoist Model Table

Code	Model
A	56-9-3
AA	60-10-5
AB	60-10-8
AC	138-18-32/35
AD	120-15-12/35
AF	138-18-40/35
AG	108-15-8
AH	174-20-40/35
AI	120-16-16
AM	108-11-32
AN	190-24-24/32
AT	190-24-20
AU	174-20-65/35
AW	120-15-13
AX	84-9-12
AY	108-12-16
AZ	108-14-65/35
B	84-12-8
BC	120-15-16
BD	174-20-52/35
BE	120-15-9
BG	202-24-20/40
BL	138-18-20/35
BM	190-24-52/35
BN	84-12-16
BO	84-12-9
BP	84-9-8
BQ	138-18-26
BR	150-18-40/32
BU	120-16-13
BV	108-10-20
BW	190-24-40/35
BY	138-18-34
C	60-10-4.5

Code	Model
CA	108-14-26
CC	138-18-65
CD	190-24-65/52
CG	120-16-H/L
CK	102-12-20/36
CL	190-24-20 ND
CM	108-14-65
CN	56-9-3ND
CO	108-14-40/35
CR	84-12-13
CT	120-15-20
CZ	130-16-32
D	108-16-8
DB	138-18-26
DC	138-18-20SP
DD	150-15-18
DF	130-16-40
DG	84-12-14
DH	190-22-40ND
DL	120-14-14K
DM	108-13-14K
DN	174-20-34/54
DP	108-14-34
DT	130-16-34
DU	190-22-40
E	120-16-12
ED	138-18-52
EE	168-22-32
EK	138-18-38/56
EL	60-8-36 Flex
EM	84-10-36 Flex
EN	108-12-36 Flex
EO	120-14-36 Flex
EW	Slider 65

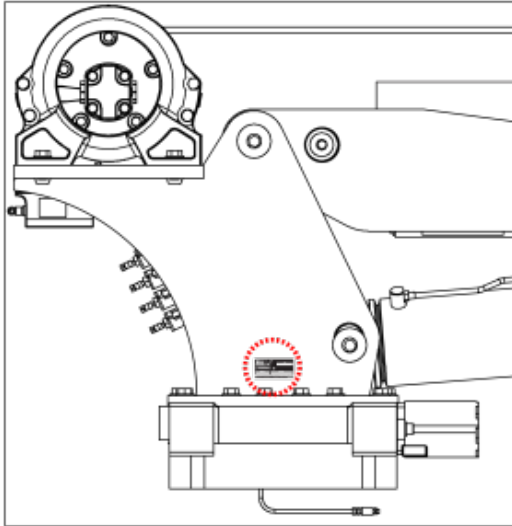
Code	Model
EX	Slider 34
F	108-11-20
FD	SI 60-174
FE	SI810-108
FF	168-20-20E
FG	SI 60-194ORT
FJ	SI816-108
FK	SI806-108
FL	SI806-120
FM	SI810-120
FO	SI810-156
FP	SI810-138
FR	SI710-120
FT	SI 75-174 & SI 75-174ORT
FU	SI810-108-36
FZ	SI710-156-54
GD	SI75 174 OR HP
GE	SI60 182 OR
GF	SI816-138/156
GG	174-20-52
GI	SI710-138-54
GL	SLIDER26
GR	SI75 194 IOT
GS	SLIDER40
GT	AFM 60-174
GU	AFM 60-194
GW	AFM 60-194-EXT
GZ	SLIDER20S
HA	SLIDER50
HH	174-20-65
I	120-16-20
II	168-19-32
IO	NXT18L
IQ	NXT18S

Code	Model
IY	NXT52
IZ	NXT40
J	168-20-20
JJ	138-18-32
K	168-22-40
KK	108-14-40
L	84-12-12
LL	190-24-32
M	138-18-20
MM	96-10-24
NN	168-18-32
OO	132-14-32
PP	168-18-32/35
Q	120-15-12
SS	190-24-65
T	138-18-40
U	168-18-40
UU	190-20-32
VV	174-20-32
WW	174-20-40
X	190-24-52

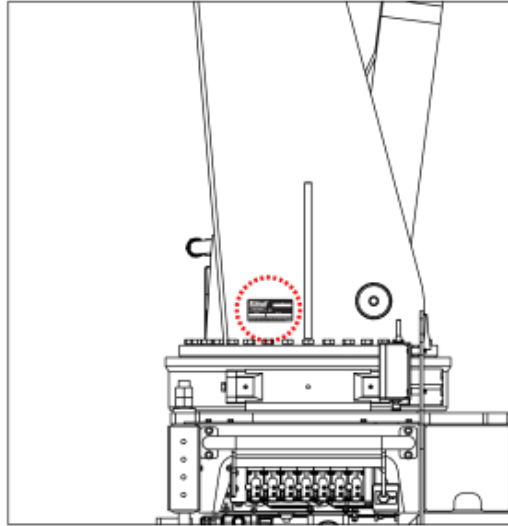


Serial Plate General Locations

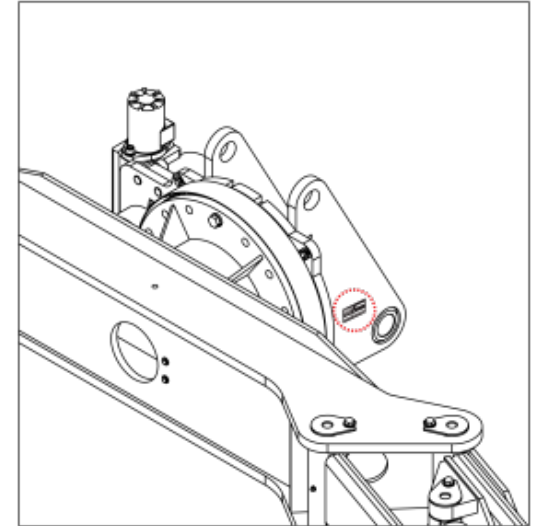
Telescopic Crane – Serial plate located on mast:



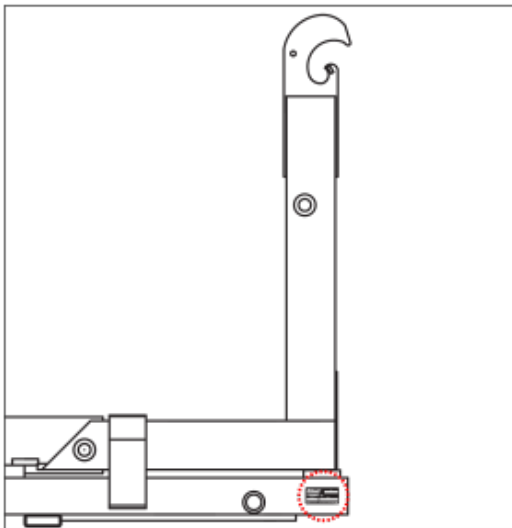
Articulating Crane – Serial plate located on mast:



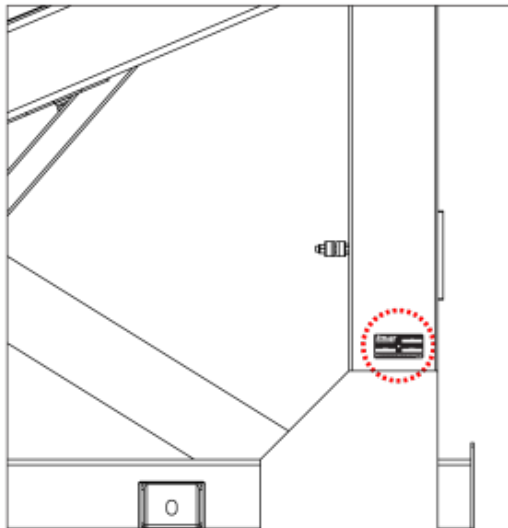
Tire Manipulator – Serial plate located on base:



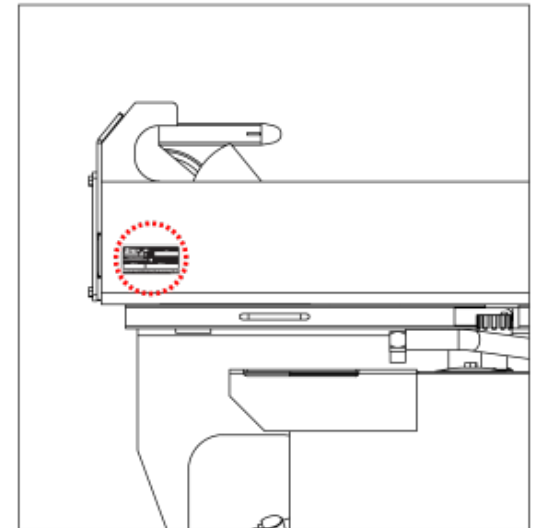
Hooklift – Serial plate located on base:



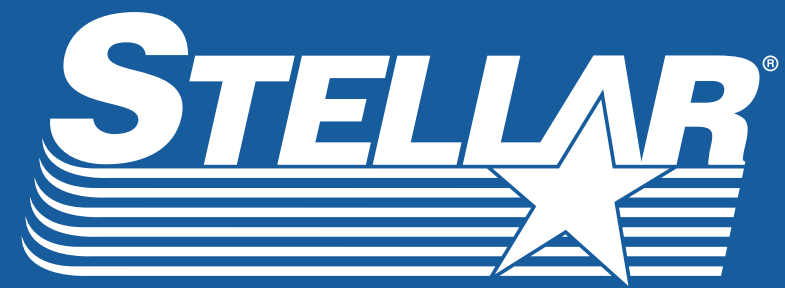
Container Carrier – Serial plate located on base:



Cable Hoist – Serial plate located on base:



STELLAR[®]

The logo consists of the word "STELLAR" in a bold, italicized, sans-serif font. A registered trademark symbol (®) is located at the top right of the word. Below the text, there is a graphic element featuring a five-pointed star. The star is positioned such that its bottom point is centered under the letter 'A'. The star is superimposed on a series of horizontal lines that appear to be moving from left to right, creating a sense of speed or motion. The lines are white and have a slight curve, giving them a dynamic, flowing appearance.