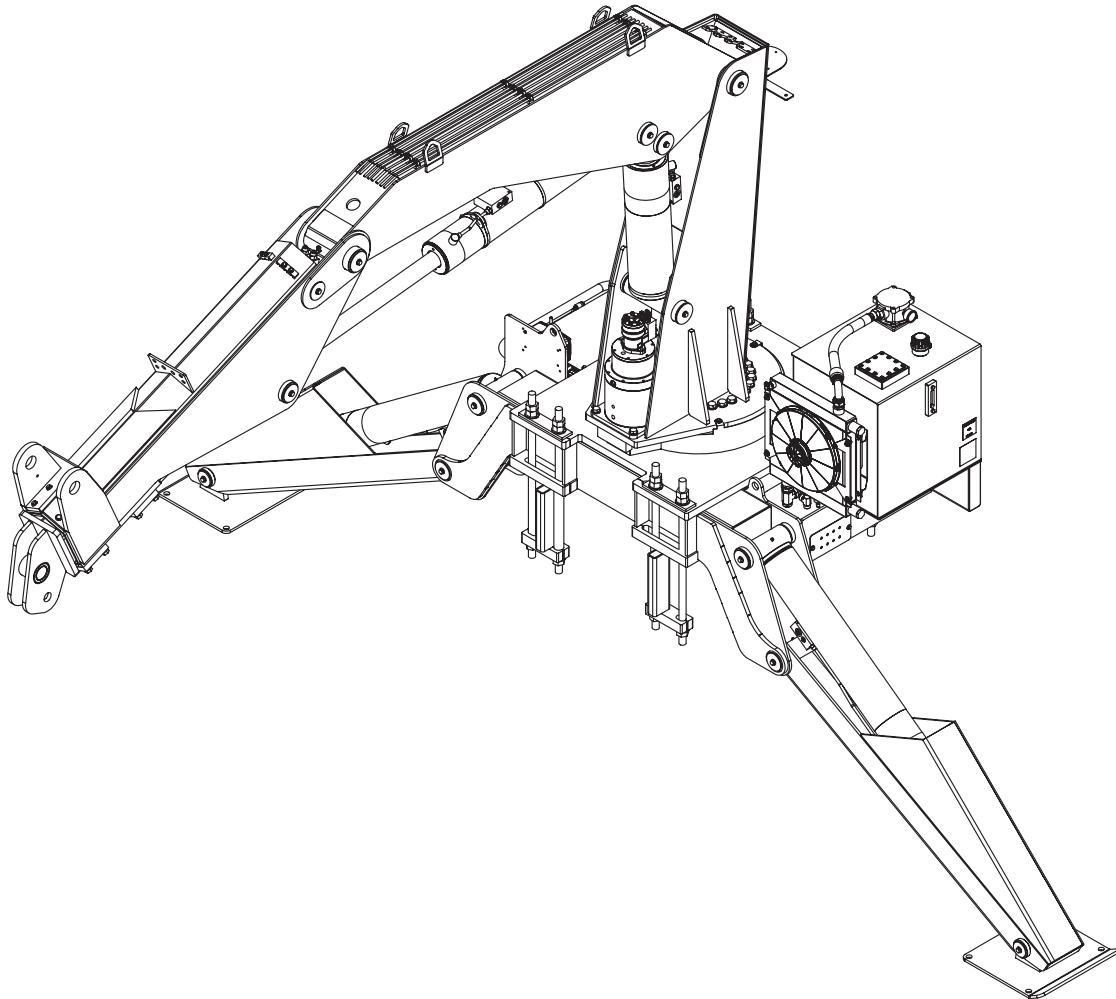




Model 17000 Articulating Crane Owner's Manual

Installation • Assembly Drawings • Parts



Notice: A copy of this manual must remain with the equipment at all times.
For a printable download copy, please visit: www.stellarindustries.com

Stellar Industries, Inc.

190 State Street

PO Box 169

Garner, IA 50438

800-321-3741

Fax: 641-923-2811

www.stellarindustries.com

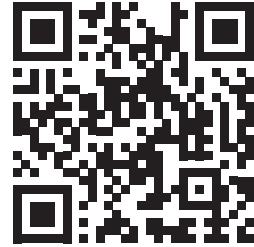
Subject to Change without Notification.
© 2023 Stellar Industries, Inc.

Rev 5
PN 90306

P65 Warning / Serial Tag Location

⚠ WARNING

Operating, maintaining, and servicing a Stellar product may expose you to chemicals including, but not limited to, engine exhaust, carbon monoxide, phthalates, and lead. These chemicals are known to the State of California to cause cancer and birth defects (or other reproductive harm). To keep your exposure to a minimum, be sure to avoid breathing exhaust and service your Stellar product in a well-ventilated area while wearing gloves or washing your hands frequently. For more information, go to www.P65Warnings.ca.gov/passenger-vehicle.



www.p65warnings.ca.gov

NOTICE

Cold Weather Performance

Although clear data on cold weather performance from every steel manufacturer is not available for all types and thicknesses of steel, Stellar Industries is confident that the weldments on our products will operate to 100% of their intended purpose to temperatures down to -40° F / C.

It is recommended if Stellar manufactured equipment needs to be used in temperatures below -40° F / C, the operator should pull the unit into a climate-controlled area and allow the weldments to warm up to and then maintain a temperature above this level.

Serial Tag Location

STELLAR [®]		DATE
PATENT INFORMATION http://www.stellarindustries.com/ip		<input type="text"/>
MODEL NO.	SERIAL NO.	
<input type="text"/>	<input type="text"/>	
MADE IN THE U.S.A. BY STELLAR INDUSTRIES, INC. PN C5942		

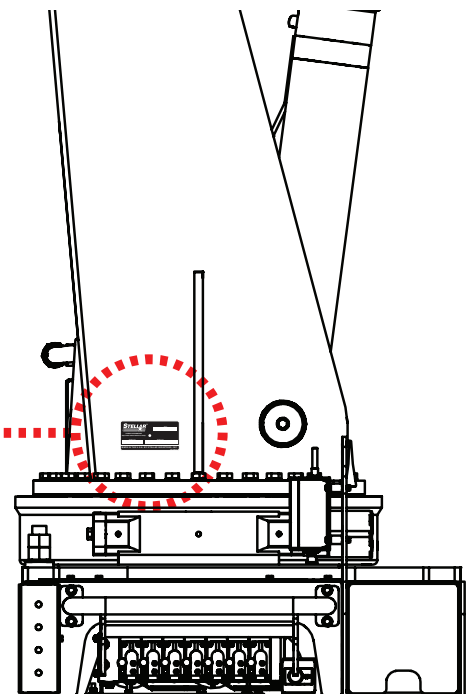


Table of Contents

Introduction	iv
Chapter 1 - Specifications	1
17000 Specifications	2
Capacity Chart - Decal PN 54620	3
Chapter 2 - Installation	5
General Installation	6
Installer Notice	6
Torque Data Chart	7
Installation Overview.....	8
Mounting Kit Drawing - PN 54420	9
Hydraulic Installation	10
Hydraulic Pressure Settings	11
Face Seal/O-Ring Size Chart	11
Hydraulic Kit - PN 97745	12
Hydraulic Kit - PN 97745 Parts List.....	13
Hydraulic Kit - PN 97745 Parts List.....	14
Hydraulic Backup Valve (Opt.) PN - 101760	16
Hydraulic Backup Valve (Opt.) PN - 101760 Parts List	17
Hydraulic Backup Valve (Opt.) PN - 101760 (Continued)	18
Hydraulic Backup Valve (Opt.) PN - 101760 (Continued)	19
Hydraulic Backup Valve (Opt.) PN - 101760 (Continued)	20
Valve Mobile Backup - 101759.....	21
Control Kit (900 MHz Version) - PN 92664.....	22
Control Kit (900 MHz Version) - PN 92664 Parts List.....	23
Control Kit (434 MHz Version) - PN 92665.....	24
Control Kit (434 MHz Version) - PN 92665 Parts List.....	25
Grease Kit - PN 127063	26
Decal Placement - PN 54621	27
Chapter 3 - Assembly Drawings.....	29
Base Assembly - PN 54372.....	30
Base Assembly - PN 54372 Parts List.....	31
Base Assembly Rear MNT RH Drive - PN 130733	32
Base Assembly Rear MNT RH Drive - PN 130733 Parts	33
Bearing Assembly - PN 53500	34
Valve Bank - PN 53514	35
Stabilizer Valve Bank - PN 55400	36
Gearbox - PN 53499	37
Mast Assembly - PN 97741	38
Mast Assembly - PN 97741 Parts List.....	39
Main Cylinder Assembly - PN 54310.....	40
Main Cylinder Assembly - PN 54310 Parts List.....	41
Main Boom Assembly - PN 97658.....	42
Main Boom Assembly - PN 97658.....	43
Outer Cylinder Assembly - PN 54313.....	44
Outer Cylinder Assembly - PN 54313 Parts List.....	45
Extension Boom Assembly - PN 71261.....	46
Extension Boom Assembly - PN 71261 Parts List.....	47
Extension Cylinder Assembly - PN 53515.....	48
Extension Cylinder Assembly - PN 53515 Parts List.....	49
Stabilizer Assembly - PN 54414	50
Stabilizer Assembly - PN 54414 Parts List.....	51
Stabilizer Cylinder Assembly - PN 54415.....	52
Stabilizer Cylinder Assembly - PN 54415 Parts List.....	53
Reservoir Assembly - PN 85936	54
Reservoir Assembly - PN 85936 Parts List	55
Optional 15 Ton Hook Kit - PN 54768	56
Radio Transmitter - PN 89149/93084.....	57
Transmitter Docking Station Asm (Opt.) - PN 97334.....	58
Transmitter Docking Station (Opt.) - PN 97334 Parts List.....	59
Wiring Diagram Docking Station - PN 65989	60

Introduction

A copy of this manual is provided with every crane and can be found in the hard plastic manual case that is installed on the chassis. A copy of this manual shall remain with the crane at all times.

Throughout the manual, three signal words will be used to bring attention to important items:

NOTICE

A NOTICE signal word indicates a practice not related to physical injury.

⚠ WARNING

A WARNING signal word indicates a hazardous situation which, if not avoided, could result in death or serious injury.

⚠ DANGER

A DANGER signal word indicates a hazardous situation which, if not avoided, will result in death or serious injury.

Information contained within this manual does not cover operation, maintenance, or troubleshooting. Please refer to the Large OTR Crane Manual for details on these items.

This manual is not binding. Stellar Industries, Inc. reserves the right to change, at any time, any or all of the items, components, and parts deemed necessary for product improvement or commercial/production purposes. This right is kept with no requirement or obligation for immediate mandatory updating of this manual.

If more information is required or technical assistance is needed, or if you feel that any part of this manual is unclear or incorrect, please contact the Stellar Customer Service Department by phone at 800-321-3741 or email at service@stellarindustries.com.

For Technical Questions, Information, Parts, or Warranty, Call Toll-Free at
800-321-3741

Hours: Monday - Friday, 8:00 a.m. - 5:00 p.m. CST

Or email at the following addresses:

Technical Questions, and Information

service@stellarindustries.com

Order Parts

parts@stellarindustries.com

Warranty Information

warranty@stellarindustries.com

Chapter 1 - Specifications

Chapter Contents

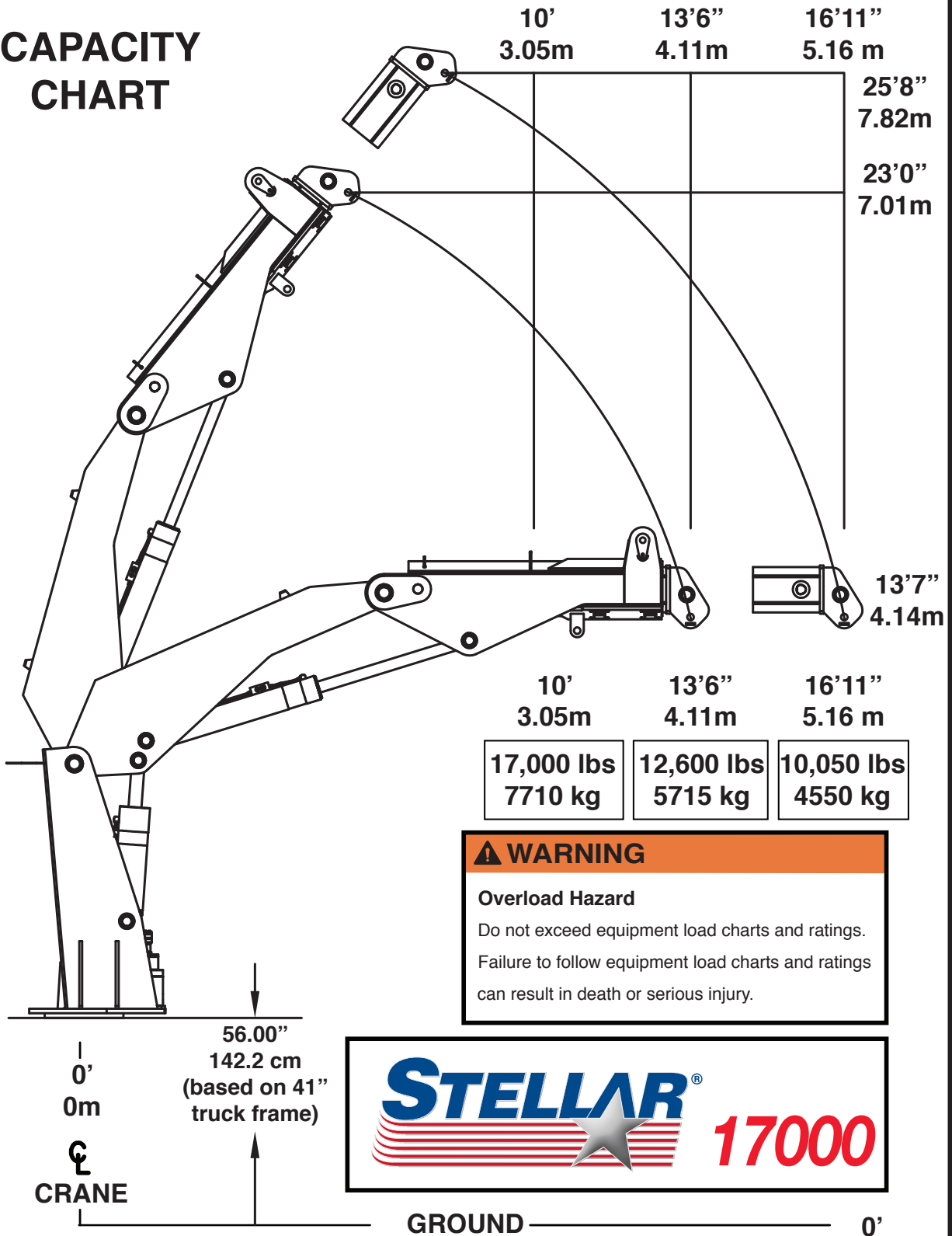
17000 Specifications	2
Capacity Chart - Decal PN 54620	3

17000 Specifications

SPECIFICATIONS SHEET- MODEL 13500 CRANE	
CRANE RATING:	170,000 FT-LBS (23.5 ton meters)
STANDARD BOOM LENGTH:	13'6" (4.11 m) FROM CL OF CRANE
BOOM EXTENSION:	HYDRAULIC 41" (104.14 cm)
MAXIMUM HORIZONTAL REACH:	16'11" (5.15 m) FROM CL OF CRANE
MAXIMUM VERTICAL LIFT:	25'8" (7.82 m) FROM TRUCK FRAME
STOWED HEIGHT:	102" (259.08 cm)
MOUNTING SPACE REQUIRED:	60" (152.4 cm)
APPROXIMATE SHIPPING WEIGHT:	9,500 LBS (4,310 kg)
CONTROLS:	PROPORTIONAL RADIO CONTROLS STANDARD FOR ALL FUNCTIONS
CYLINDER SPECIFICATIONS:	
INNER LIFT CYLINDER:	INNER LIFT CYLINDER: 7" (17.78 cm) BORE WITH INTEGRAL PILOT OPERATED COUNTERBALANCE VALVES
OUTER LEFT CYLINDER:	5.5" (13.97 cm) BORE WITH INTEGRAL PILOT OPERATED COUNTERBALANCE VALVES.
EXTENSION CYLINDER:	4" (10.16 cm) BORE WITH INTEGRAL PILOT OPERATED COUNTERBALANCE VALVES.
ROTATION:	315 DEGREE POWER
LIFTING CAPACITIES:	17,000 LBS @ 10' (7,710 kg @ 3.05 m) 10,050 LBS @ 16' 11" (4555 kg @ 5.15 m)
POWER SUPPLY REQUIRED:	PTO & PUMP
	20 GPM @ 4,400 PSI
	(76 LPM @ 304 BAR)
CHASSIS RBM	2,040,000 IN-LB

Capacity Chart - Decal PN 54620

CAPACITY CHART



190 STATE STREET GARNER, IA 50438
 PHONE: (800) 321-3741 FAX: (641) 923-2812

54620 - Rev A

This page left intentionally blank.

Chapter 2 - Installation

Chapter Contents

General Installation	6
Hydraulic Installation	10
Hydraulic Pressure Settings.....	11
Face Seal/O-Ring Size Chart.....	11
Hydraulic Kit - PN 97745.....	12
Hydraulic Kit - PN 97745 Parts List.....	13
Hydraulic Kit - PN 97745 Parts List.....	14
Hydraulic Backup Valve (Opt.) PN - 101760.....	16
Hydraulic Backup Valve (Opt.) PN - 101760 Parts List.....	17
Hydraulic Backup Valve (Opt.) PN - 101760 (Continued).....	18
Hydraulic Backup Valve (Opt.) PN - 101760 (Continued).....	19
Hydraulic Backup Valve (Opt.) PN - 101760 (Continued).....	20
Valve Mobile Backup - 101759.....	21
Control Kit (900 MHz Version) - PN 92664	22
Control Kit (900 MHz Version) - PN 92664 Parts List	23
Control Kit (434 MHz Version) - PN 92665	24
Control Kit (434 MHz Version) - PN 92665 Parts List	25
Grease Kit - PN 127063.....	26
Decal Placement - PN 54621.....	27

General Installation

This chapter is designed to serve as a general guide for the installation of a Stellar 17000 Crane on a Stellar Service Body. Each installation is considered unique so certain portions of this chapter may or may not apply to your direct application. If a question should arise during the installation process, please contact Stellar Customer Service at (800) 321 3741.

This crane is designed for use with a Stellar Service Body installed on a vehicle that meets the minimum chassis requirements of the crane. It is the installer's responsibility to assure that the crane is mounted on a platform that will support the maximum crane rating of this crane.

⚠ WARNING Do not install this crane on a body not capable of handling the loads imposed on it. Failure to do so may result in serious injury or death.

NOTICE When installing welder units to the service bodies, it is highly recommended that a surge protector is installed on the chassis batteries to protect the crane radio receiver, wiring and other electronic devices from an unexpected electrical spike or surge. Failure to do so could result in extensive damage to the service body and crane electrical circuit.

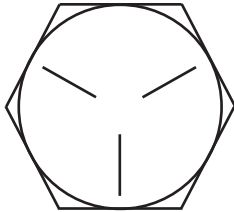
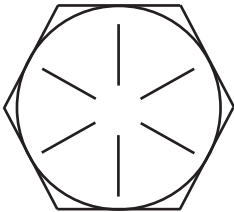
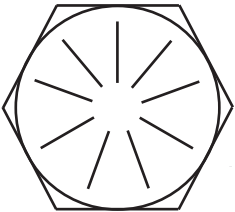
Installer Notice

According to Federal Law (49 cfr part 571), each final-stage manufacturer shall complete the vehicle in such a manner that it conforms to the standards in effect on the date of manufacture of the incomplete vehicle, the date of final completion, or a date between those two dates. This requirement shall, however, be superseded by any conflicting provisions of a standard that applies by its terms to vehicles manufactured in two or more stages.

Therefore, the installer of Stellar® products are considered one of the manufacturers of the vehicle. As such a manufacturer, the installer is responsible for compliance with all applicable federal and state regulations, as well as any OEM instructions such as chassis body builder guides. They are required to certify that the vehicle is in compliance with the Federal Motor Vehicle Safety Standards and other regulations issued under the National Traffic and Motor Vehicle Safety Act and also complies with recommended best practices from the chassis OEM.

Please reference the Code of Federal Regulations, title 49 - Transportation, Volume 5 (400-999), for further information, or visit <http://www.gpoaccess.gov/nara/index.html> for the full text of Code of Federal Regulations.

Torque Data Chart

		GRADE 5		GRADE 8		GRADE 9
						
SIZE (DIA-TPI)	BOLT DIA (INCHES)	PLAIN (FT-LB)	PLATED (FT-LB)	PLAIN (FT-LB)	PLATED (FT-LB)	PLATED (FT-LB)
5/16-18	0.3125	17	13	25	18	22
3/8-16	0.3750	31	23	44	33	39
7/16-14	0.4375	49	37	70	52	63
1/2-13	0.5000	75	57	105	80	96
9/16-12	0.5625	110	82	155	115	139
5/8-11	0.6250	150	115	220	160	192
3/4-10	0.7500	265	200	375	280	340
7/8-9	0.8750	395	295	605	455	549
1-8	1.000	590	445	910	680	823
1 1/8-7	1.1250	795	595	1290	965	1167
1 1/4-7	1.2500	1120	840	1815	1360	1646
1 3/8-6	1.3750	1470	1100	2380	1780	2158
1 1/2-6	1.500	1950	1460	3160	2370	2865

NOTE:

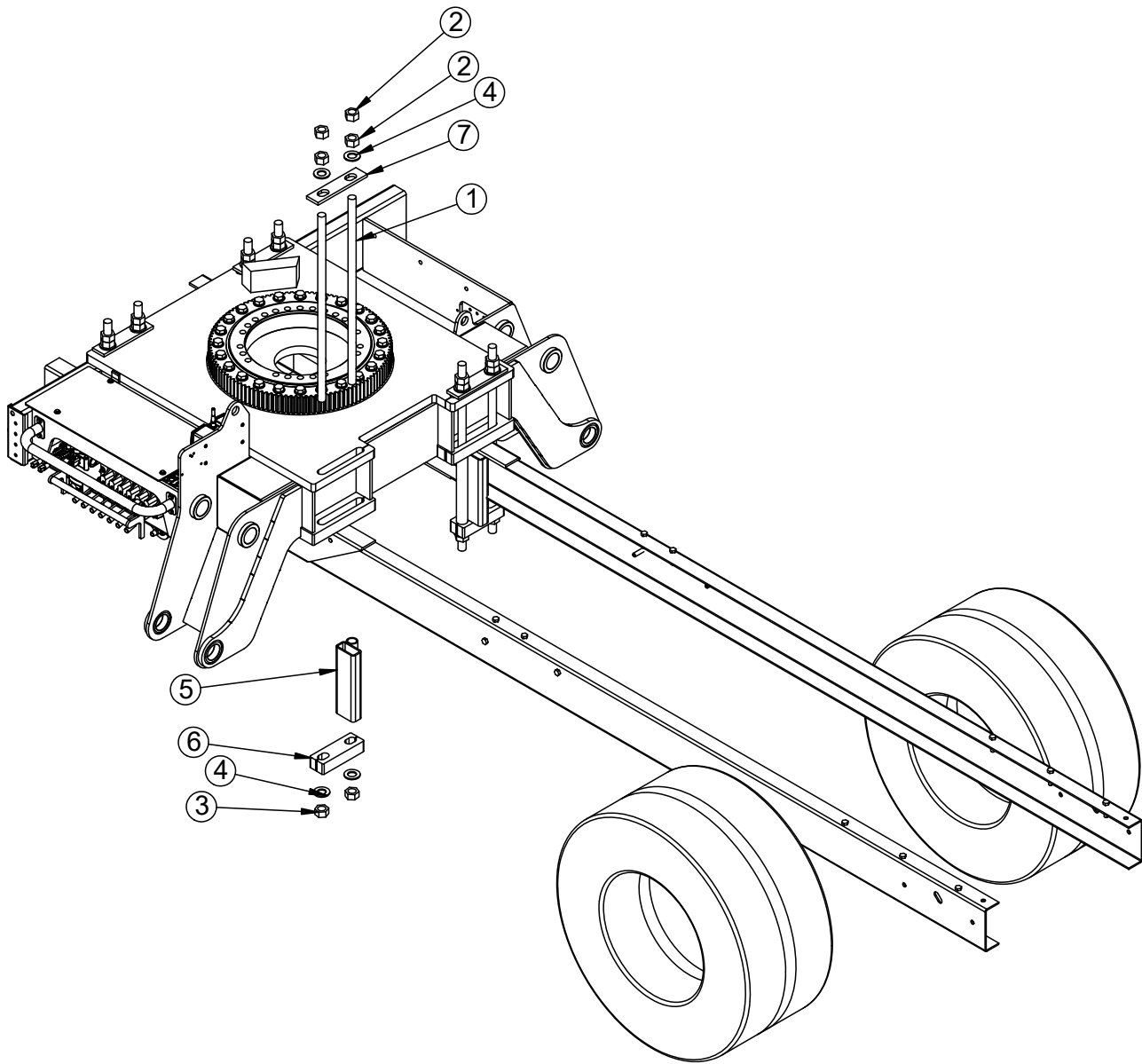
When using the torque data in the chart, the following rules should be observed:

- Bolt manufacturer’s particular specifications should be consulted when provided.
- Flat washers of equal strength must be used.
- All torque measurements are given in foot-pounds. To convert to inch-pounds, multiply by 12.
- Torque values specified are for bolts with residual oils or no special lubricants applied.
- Torque values for socket-head capscrews are the same as for grade 8 capscrews.
- **NOTICE** Do not use these values if a different torque value or tightening procedure is given for a specific application. Torque values listed are for general use only. Check tightness of fasteners periodically.
- Shear bolts are designed to fail under predetermined loads. Always replace shear bolts with identical grade.
- Fasteners should be replaced with the same or higher grade. If higher grade fasteners are used, these should only be tightened to the strength of the original.
- Tighten plastic insert or crimped steel-type lock nuts to approximately 110 percent of the dry torque values shown in the chart below, applied to the nut, not to the bolt head. Tighten toothed or serrated-type lock nuts to the full torque value. *Note: “Lubricated” means coated with a lubricant such as engine oil, or fasteners with phosphate and oil coatings. “Dry” means plain or zinc plated without lubrication. Tighten lubricated bolts to approximately 80% of dry bolts.*

Installation Overview

1. Relocate any obstructions on the frame that will be in the way of mounting the crane.
2. Measure the inside of the frame rails and cut the frame support to this length. Ensure that the frame supports have a tight fit between the frame rails.
3. Set the crane on the chassis and allow a minimum of 3" from the cab.
4. Make certain that the frame supports are installed square, cut to length in such a way as to support the frame flanges with the tie down rods are torqued.
5. Install the crane tie downs. Start at one corner and tighten both tie downs to 200 ft-lbs. Move to the diagonal set and tighten to 200 ft-lbs. Tighten the remaining 2 corners. Continue this pattern at 200 ft-lb increments until 500-550 ft-lbs is achieved. Be sure the mounting block stays perpendicular to the frame rail as they are tightened down.
6. Connect the pressure and return lines per the hydraulic kit.
7. Connect the electrical power and ground wires. Ground preferably connected to battery.
8. With the crane and outriggers in the stored position, check the reservoir for oil and fill if necessary.
9. Operate the crane for several cycles. Fully cycle the cylinder in both directions (blow past relief) to remove any air from the system.

Mounting Kit Drawing - PN 54420



PN 54420			
ITEM	PART	DESCRIPTION	QTY
1	8900	TIE DOWN ROD 15000	8
2	8978	NUT 1.25-7 HHGR8	16
3	8834	NUT 1.25-7 HHGR8 TOP LOCKING	8
4	9180	WASHER 1.25 SAE FLAT YELLOW GR8	16
5	8202	FRAME SUPPORT 15000 CRANE PC BLACK	4
6	8054	MTG BLOCK 15000 PC BLACK	4
7	11677	PLATE MTG 23000 PC BLACK	4
REV. A			

Hydraulic Installation

Never modify or alter any of the equipment, whether mechanical, electrical, or hydraulic, without Stellar Industries' approval.

⚠ WARNING Do not touch or grab any hoses that could be under pressure. Release system pressure before attempting to make adjustments or repairs.

Do not attempt service or repair when PTO is engaged.

Disassemble and assemble hydraulic components on a clean surface.

Clean all metal parts in a nonflammable cleaning fluid. Then lubricate all components to aid in assembly.

⚠ WARNING Hydraulic fluid expands when heated. This raises the pressure in an unventilated tank. Release the tank pressure before removing the cap completely. Failure to do so may cause the oil to shoot out of the tank very rapidly and cause severe burns.

⚠ WARNING Do not rely on the hydraulic fluid to support the boom or crane. If hydraulic fluid escapes, the boom or crane can fall immediately. Make sure the ground or blocking is supporting the boom before performing any maintenance or repair.

NOTICE Contaminants in a hydraulic system affect operation and will result in serious damage to the system components. Dirty hydraulic systems are a major cause of component failures.

If evidence of foreign particles is found in the hydraulic system, flush the system.

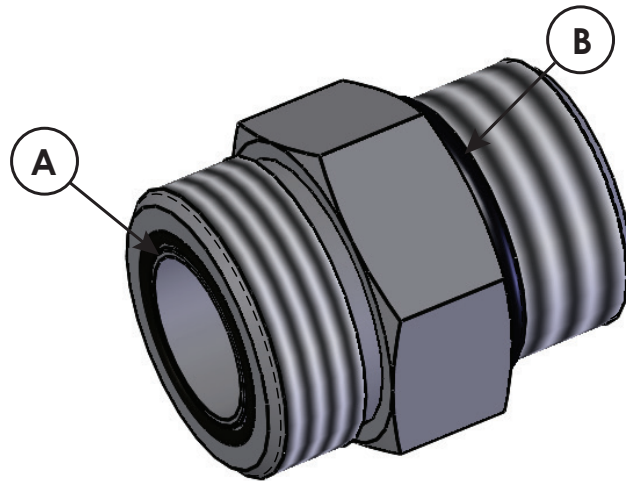
When installing metal hydraulic tubes, tighten all fittings finger tight. Then, in order, tighten the fittings at the rigid end, the adjustable end, and the mounting brackets. After tubes are mounted, install the hoses. Connect both ends of the hose with all fittings finger tight. Position the hose so it does not rub the machine or another hose and has a minimum of bending and twisting. Tighten fittings in both couplings.

Due to manufacturing methods, there is a natural curvature to a hydraulic hose. The hose should be installed so any bend is with this curvature.

Hydraulic Pressure Settings

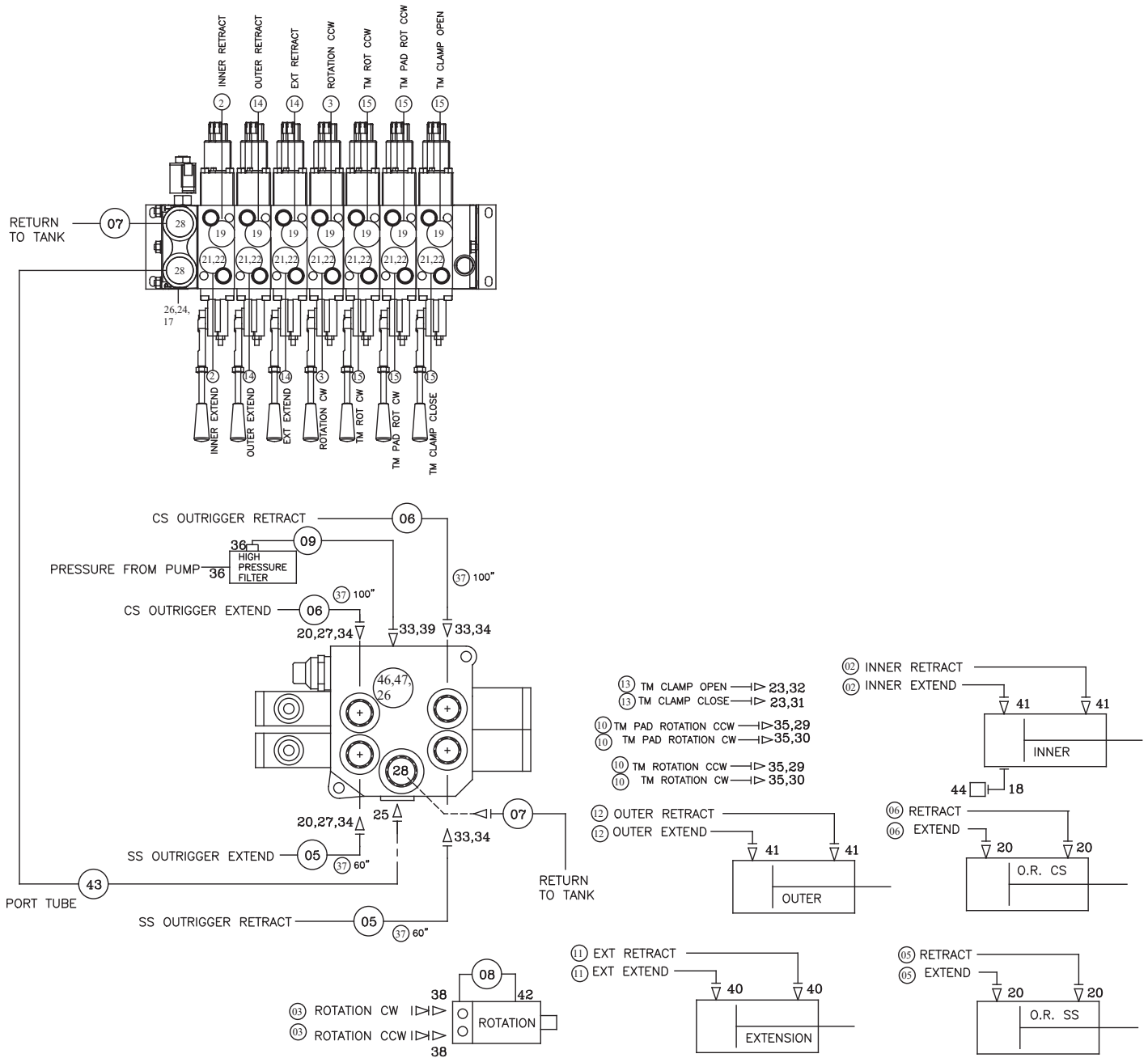
Main Relief 4600 PSI			
		Pressure (PSI)	
Function	Flow	Extend	Retract
Inner	10.6	4400	2200
Outer	10.6	4400	2200
Extension	10.6	4400	4400
Rotation	10.6	2200	2200
TM Rot	6.6	2200	2200
TM Pad Rot	6.6	2500	2500
TM Clamp	6.6	4200	4200

Face Seal/O-Ring Size Chart



Hose Size	Fitting Size	Face Seal (A) Stellar® PN	O-ring Boss (B) Stellar® PN
1/4"	#4	C2027	D1245
3/8"	#6	C2028	D1246
1/2"	#8	C2029	D1247
5/8"	#10	32223	D1248
3/4"	#12	D1244	D1249
1"	#16		D1250

Hydraulic Kit - PN 97745



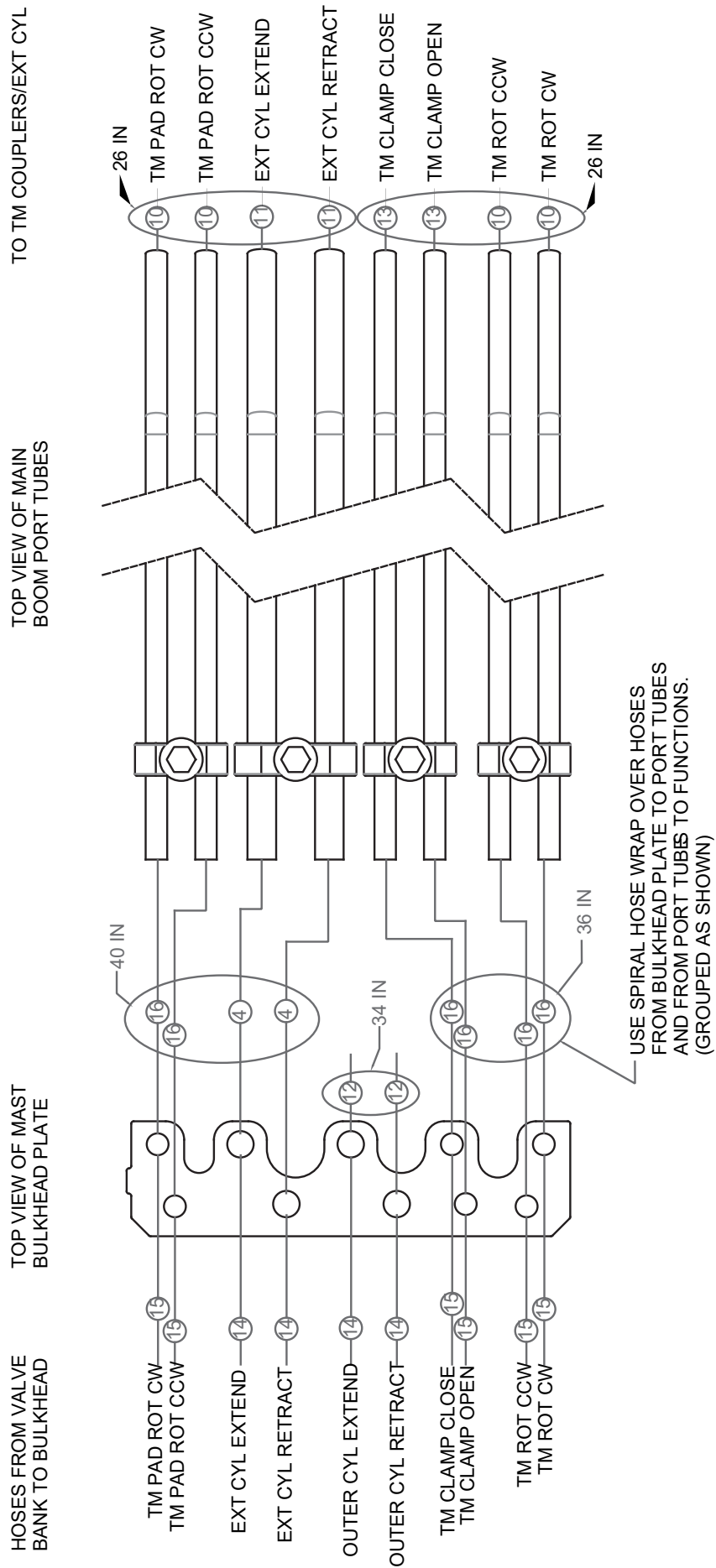
Hydraulic Kit - PN 97745 Parts List

PN 97745			
ITEM	PART	DESCRIPTION	QTY
01	97746	HOSE KIT 17000 V3 (INCL:2-16)	1
02	72441	HOSE-HYD .38 X 87	2REF
03	72663	HOSE-HYD .38 X 60	2REF
04	97596	HOSE-HYD .38 X 36	2REF
05	55675	HOSE-HYD .50 X 70	2REF
06	55674	HOSE-HYD .50 X 110	2REF
07	72662	HOSE-HYD .75 X 68	2REF
08	55677	HOSE-HYD .25 X 12	1REF
09	72665	HOSE-HYD .50 X 21	1REF
10	97599	HOSE-HYD .25 X 63	4REF
11	97598	HOSE-HYD .38 X 28	2REF
12	98233	HOSE-HYD .38 X 75	2REF
13	97654	HOSE-HYD .25 X 63	2REF
14	98234	HOSE-HYD .38 X 112	4REF
15	98235	HOSE-HYD .25 X 112	6REF
16	97597	HOSE-HYD .25 X 36	6REF
17	51817	FTG 4-4 MAORB-FORB 90	1
18	3861	FTG 6-6 MAORB-FORB 90	1
19	D1302	FTG 6-10 MFS-MAORB 90	7
20	1554	FTG 8-8 MFS-MORB STRAIGHT	6
21	C1111	FTG 10-6 MORB-FORB STRAIGHT REDUCER	7
22	25361	FTG 6-6 MFS-MAORB 90 LONG	7
23	47406	FTG 8-8 MORB-MFS BULKHEAD STRAIGHT	2
24	44521	FTG 5-4 MORB-FORB STRAIGHT REDUCER	1
25	14354	FTG 12-10 MFS-MAORB 90	1
26	39780	GAUGE OIL LF 2.5 0-6000 CBM SAE	2
27	14441	FTG 10-8 MORB-FORB STRAIGHT REDUCER	2
28	C5968	FTG 12-12 MFS-MAORB 90	3
29	13555	QUICK CPLR FFH04-38-SAE-M	2
30	13554	QUICK CPLR FFH04-38-SAE-F	2
31	13556	QUICK CPLR FFN06-12SAE-F	1
32	13557	QUICK CPLR FFN06-12SAE-M	1
33	C2252	FTG 8-10 MFS-MORB STRAIGHT	3
34	C2376	FTG 8-8 MFS-FFSS 90	4
35	47405	FTG 6-6 MORB-MFS BULKHEAD STRAIGHT	4
36	C1180	FTG 8-12 MFS-MORB STRAIGHT	2
37	4043	HOSE PROTECTOR 0.50 AS-B-17	27'
38	C1855	FTG 6-10 MFS-MORB STRAIGHT	2
39	60504	FTG 10-10 MAORB-FORB 90	1
40	7343	FTG 6-8 MFS-MAORB 45	2
41	C1854	FTG 6-8 MFS-MORB STRAIGHT	4
42	C1198	FTG 4-4 MFS-MAORB 90	1

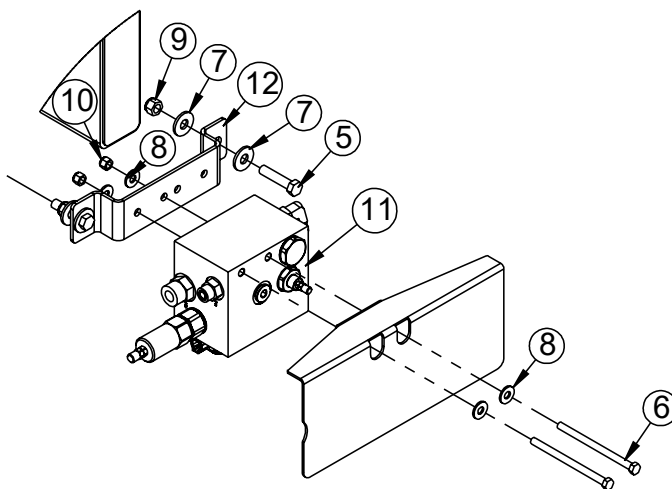
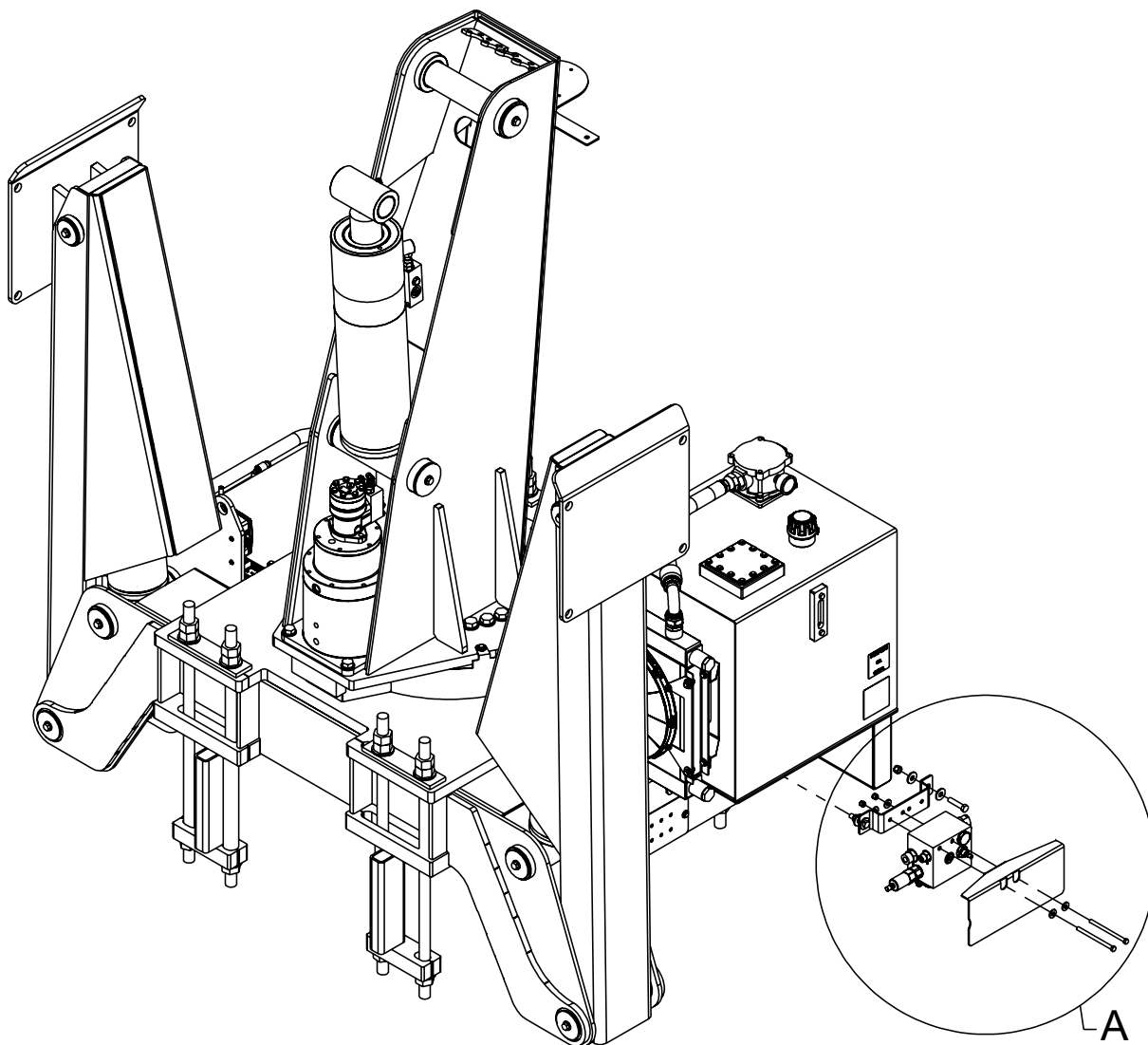
Hydraulic Kit - PN 97745 Parts List

PN 97745			
ITEM	PART	DESCRIPTION	QTY
43	55402	TUBE ASM 0.75 17000 HPCO	1
44	55394	SWITCH PRES OVERLD CD-11C-5500R/WD	1
45	53479	LOOM 1.00 SPIRAL WRAP POLYETHYLENE	13.5FT
46	55833	FTG 10-4 MORB-FORB STRAIGHT REDUCER	1
47	51817	FTG 4-4 MAORB-FORB 90	1
REV. A			

Hydraulic Kit - PN 97745 (cont.)



Hydraulic Backup Valve (Opt.) PN - 101760



DETAIL A
SCALE 1 : 12

Hydraulic Backup Valve (Opt.) PN - 101760 Parts List

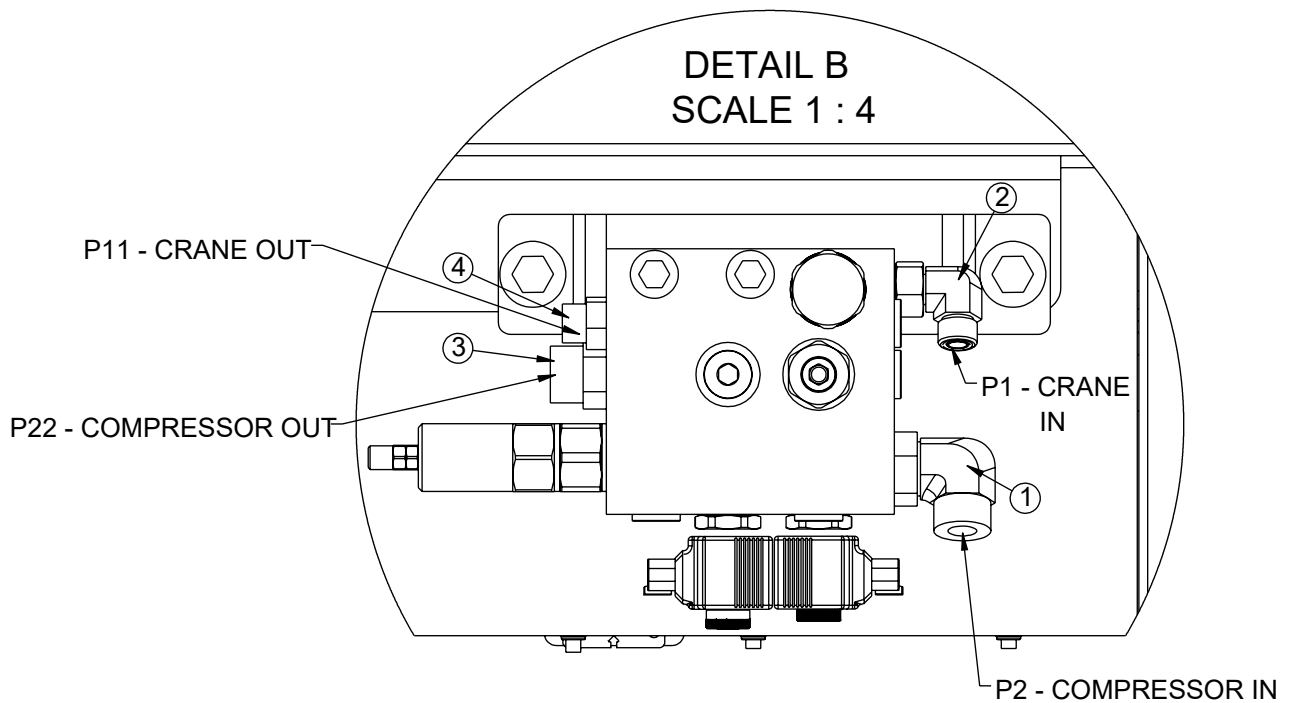
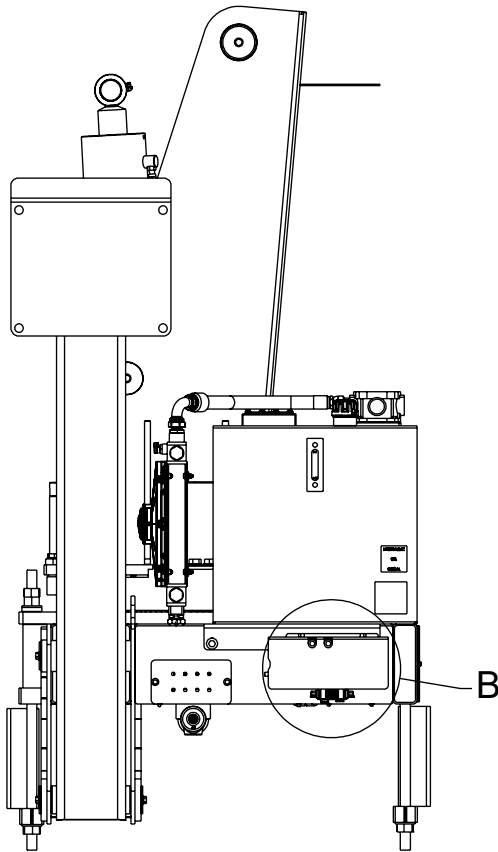
PN 101760

ITEM	PART	DESCRIPTION	QTY
1	C5968	FTG 12-12 MFS-MAORB 90	1
2	C3643	FTG 8-10 MFS-MAORB 90	1
3	C2142	FTG 12-12 MFS-MORB STRAIGHT	1
4	C2252	FTG 8-10 MFS-MORB STRAIGHT	1
5	26025	CAP SCR 0.50-13X2.25 HHGR5	2
6	C0956	CAP SCR 0.38-16X5.50 HHGR5	2
7	0352	WASHER 0.50 USS FLAT	4
8	0346	WASHER 0.38 USS FLAT	4
9	C6106	NUT 0.50-13 HHGR5 NYLOC	2
10	0347	NUT 0.38-16 HHGR5 NYLOC	2
11	101759	VALVE MOBILE CRANE BACKUP	1
12	101761	FORMED MNT BRKT CRANE EMER BLOCK 17000	1
13	103418	PLATE COVER VALVE CRANE BACKUP 17/23/28	1

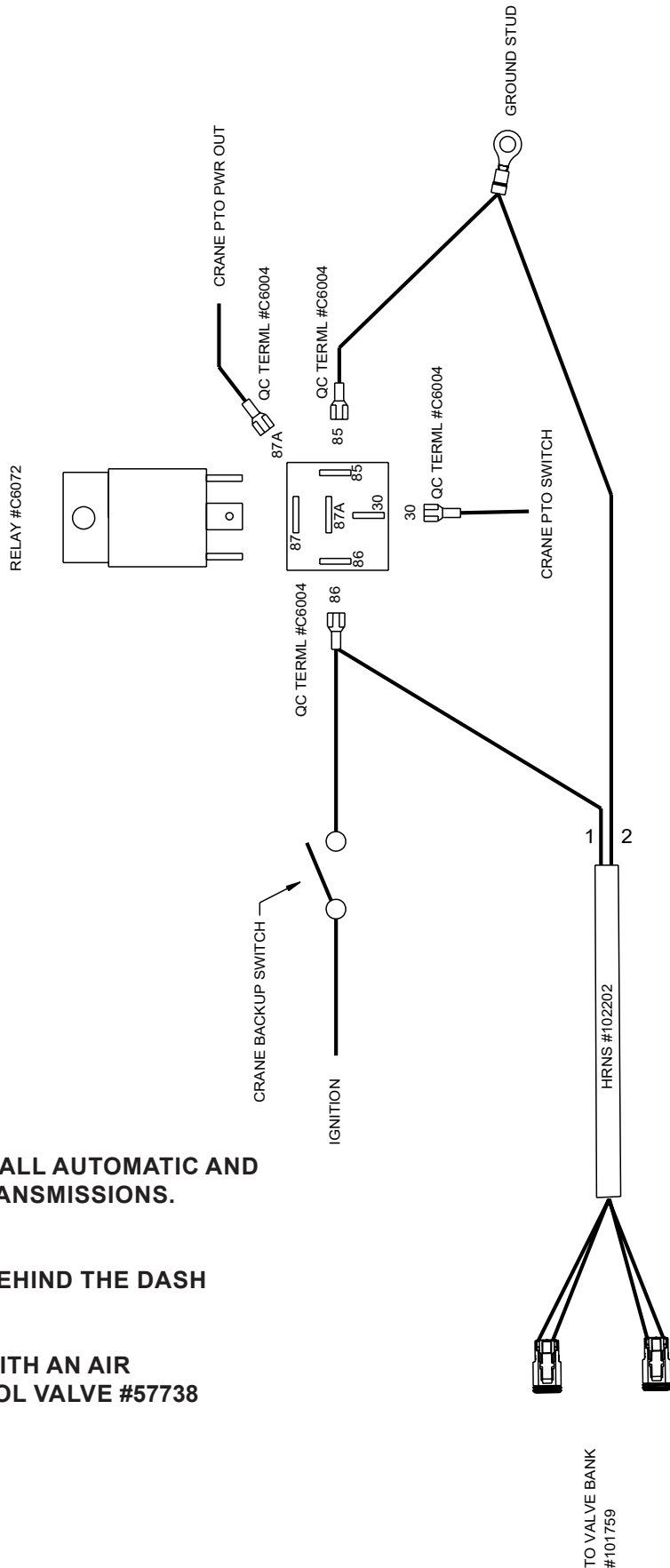
ITEMS NOT SHOWN

PART	DESCRIPTION	QTY
102202	WIRE HARNESS VALVE CRANE EMER BLOCK	1
75110	TERML BUTT 16-14GA STP 22-18GA HS	2

Hydraulic Backup Valve (Opt.) PN - 101760 (Continued)



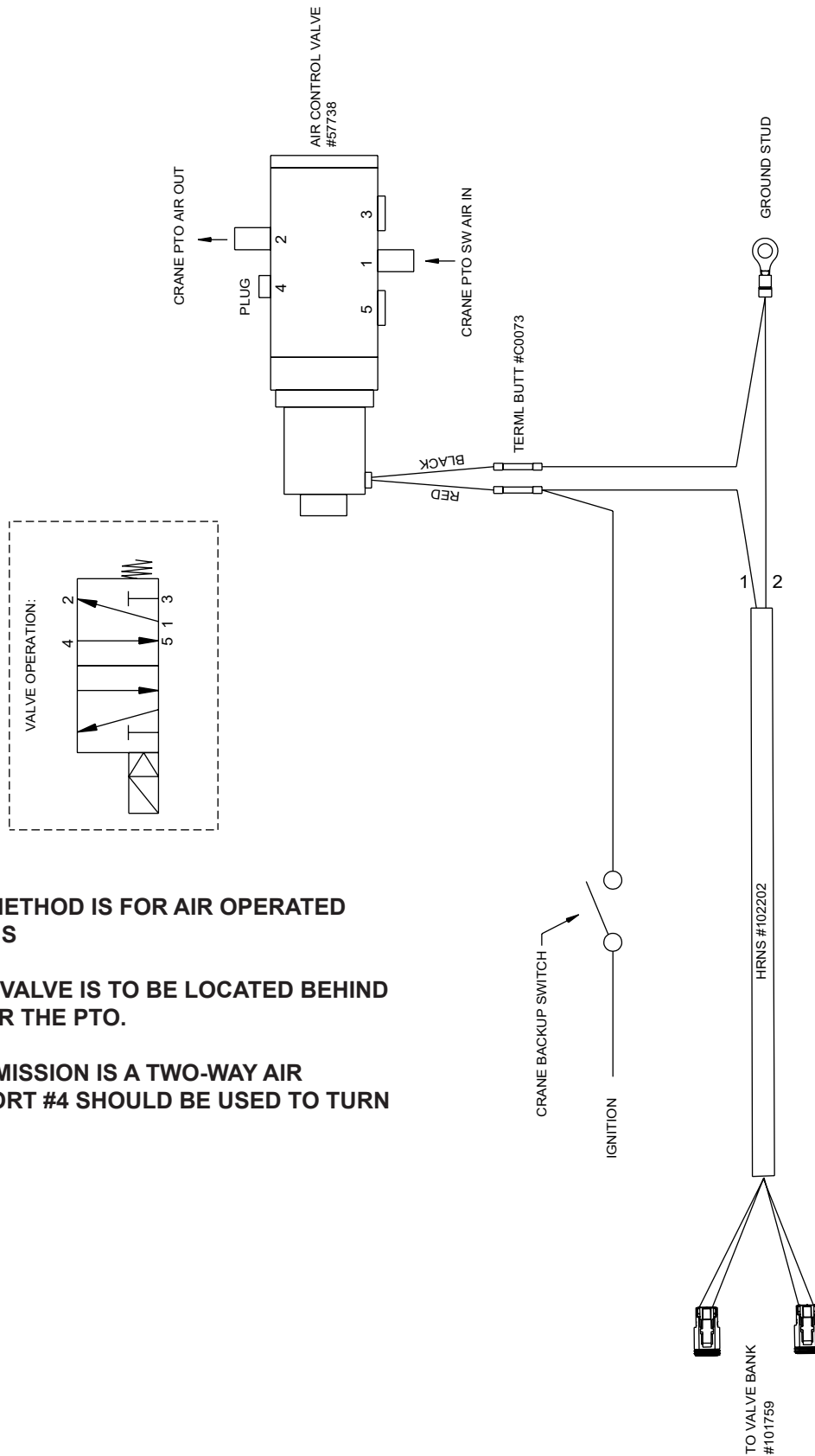
Hydraulic Backup Valve (Opt.) PN - 101760 (Continued)



NOTES:

- THIS WIRING METHOD IS FOR ALL AUTOMATIC AND ELECTRIC OVER AIR MANUAL TRANSMISSIONS.
- RELAY IS TO BE INSTALLED BEHIND THE DASH NEAR THE PTO SWITCH.
- IF INSTALLING ON A TRUCK WITH AN AIR OPERATED PTO, ADD AIR CONTROL VALVE #57738 SEE PAGE 14.

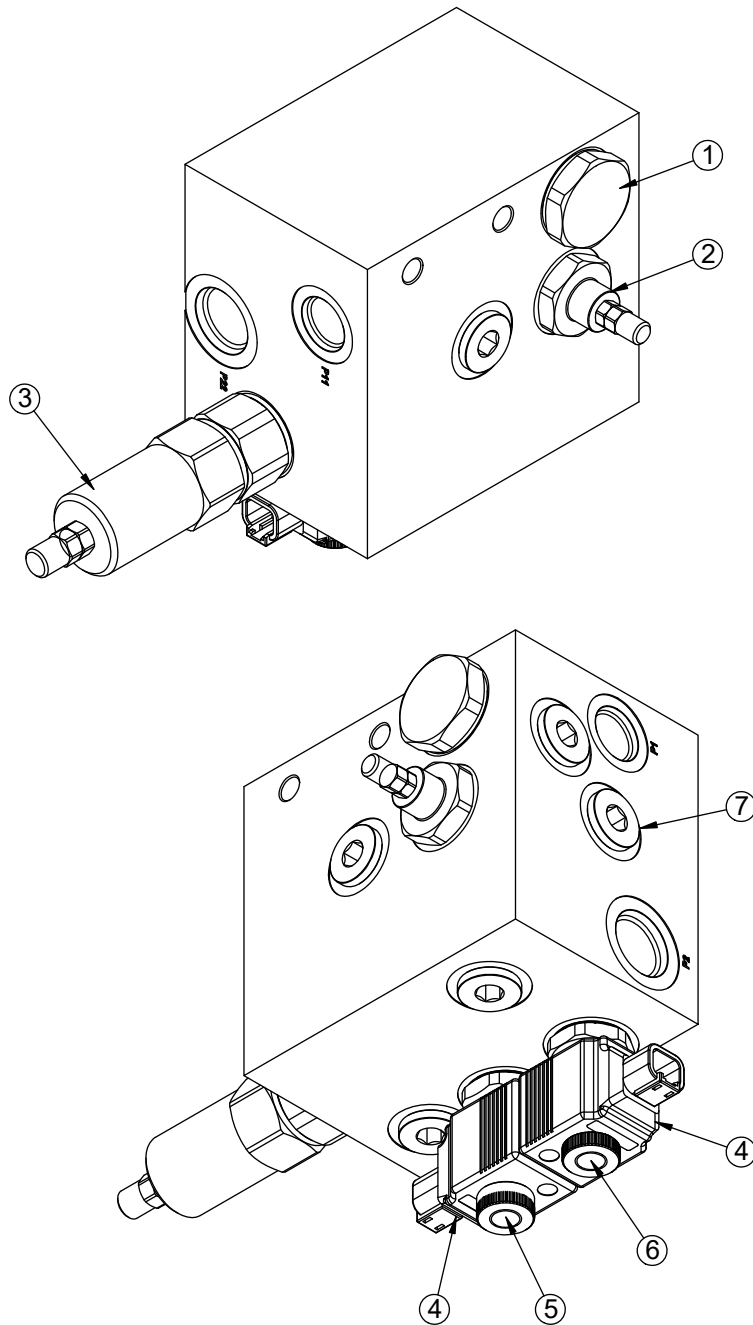
Hydraulic Backup Valve (Opt.) PN - 101760 (Continued)



NOTES:

- *THIS WIRING METHOD IS FOR AIR OPERATED TRANSMISSIONS**
- *AIR CONTROL VALVE IS TO BE LOCATED BEHIND THE DASH NEAR THE PTO.**
- *IF THE TRANSMISSION IS A TWO-WAY AIR OPERATION, PORT #4 SHOULD BE USED TO TURN THE PTO OFF.**

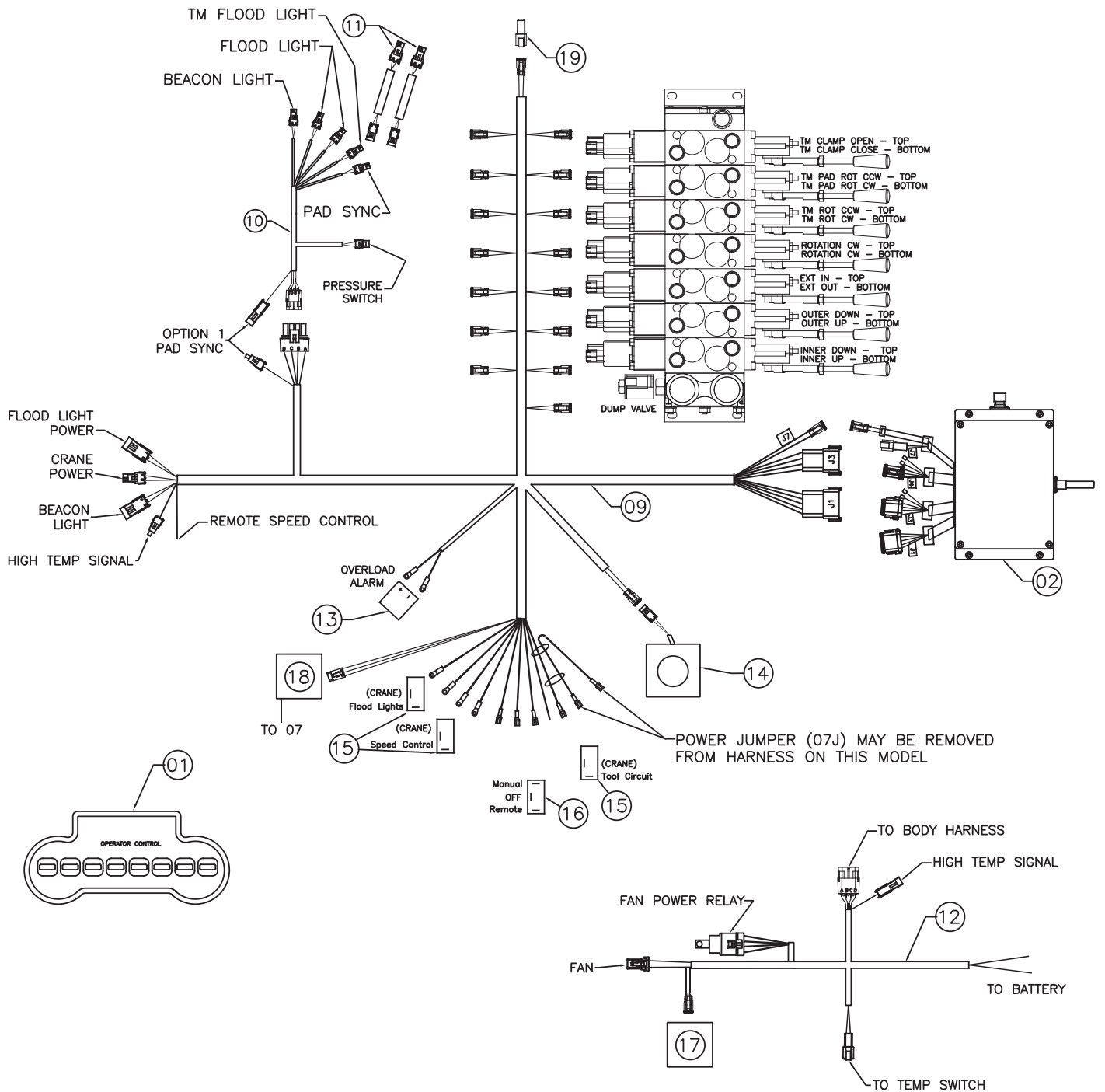
Valve Mobile Backup - 101759



PN 101759

ITEM	PART	DESCRIPTION	QTY
1	131389	VALVE CHECK MOBILE CRANE BACKUP	1
2	131390	FLOW DIVIDER MOBILE CRANE BACKUP	1
3	131391	VALVE RELIEF MOBILE CRANE BACKUP	1
4	131392	COIL 12VDC DEUTSCH MOBILE CRANE BACKUP	2
5	131393	VALVE CARTRIDGE MOBILE CRANE BACKUP	1
6	131394	VALVE CARTRIDGE MOBILE CRANE BACKUP	1
7	12153	FTG 10 MORB PLUG HOLLOW HEX	5

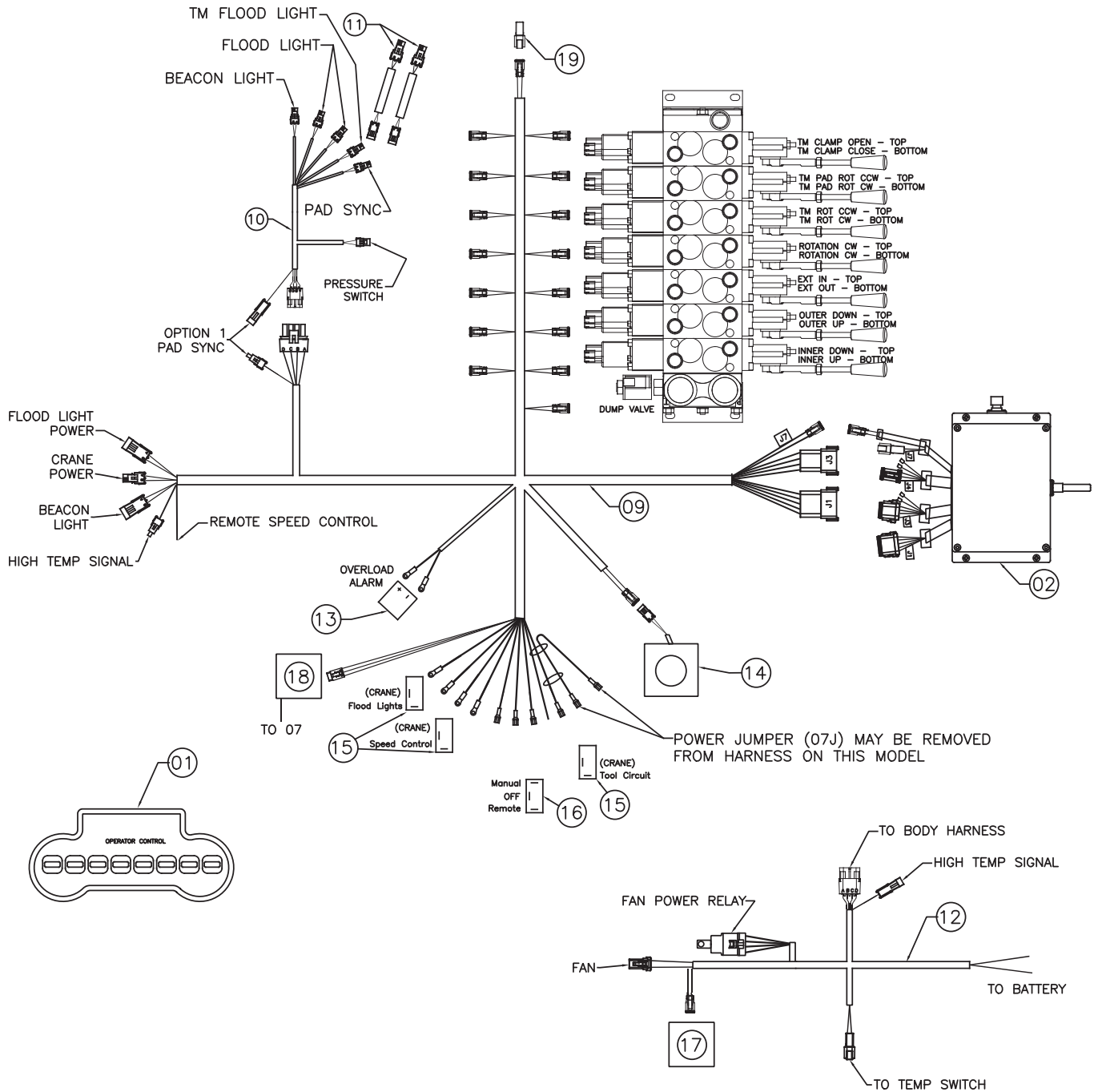
Control Kit (900 MHz Version) - PN 92664



Control Kit (900 MHz Version) - PN 92664 Parts List

PN 92664			
ITEM	PART	DESCRIPTION	QTY
01	89149	TRANSMITTER SCANRECO 9/135/17/23/28	1
02	93082	RECEIVER ASM SCANRECO OTR 900 MHZ	1
03	89152	CABLE BACKUP 10M SCANRECO	1
04	89154	BATTERY SCANRECO	2
05	89155	CHARGER BATTERY SCANRECO	1
06	89639	STRAP CARRYING SCANRECO	1
07	93191	CABLE ASM M12 5P M-F RA 5FT	1REF
08	93192	DUST CAP M12 SKT BLACK PLASTIC	1REF
09	93695	WIRE HRNS CRANE 9K-28K	1
10	93204	WIRE HRNS CRANE MAST LRG OTR	1
11	68797	WIRE HARNESS MAIN BOOM 28000 TM LTS	2
12	125411	WIRE HRNS OTR COOLER FAN HTP	1
13	78246	BACKUP ALARM 87 DECIBEL	1
14	94004	E-STOP SWITCH ASM 17/23/28K CRANE	1
15	C4815	SWITCH, TOGGLE ON/OFF	3
16	8623	SWITCH TOGGLE ON-OFF-ON SGL P DBL T	1
17	125412	RELAY ASM COOLER FAN PWR INTRLK	1
18	125415	RELAY ASM HTP ALARM INDICATOR	1
19	76063	CAP 2P PLUG AT CONNECTOR	1
REV. B			

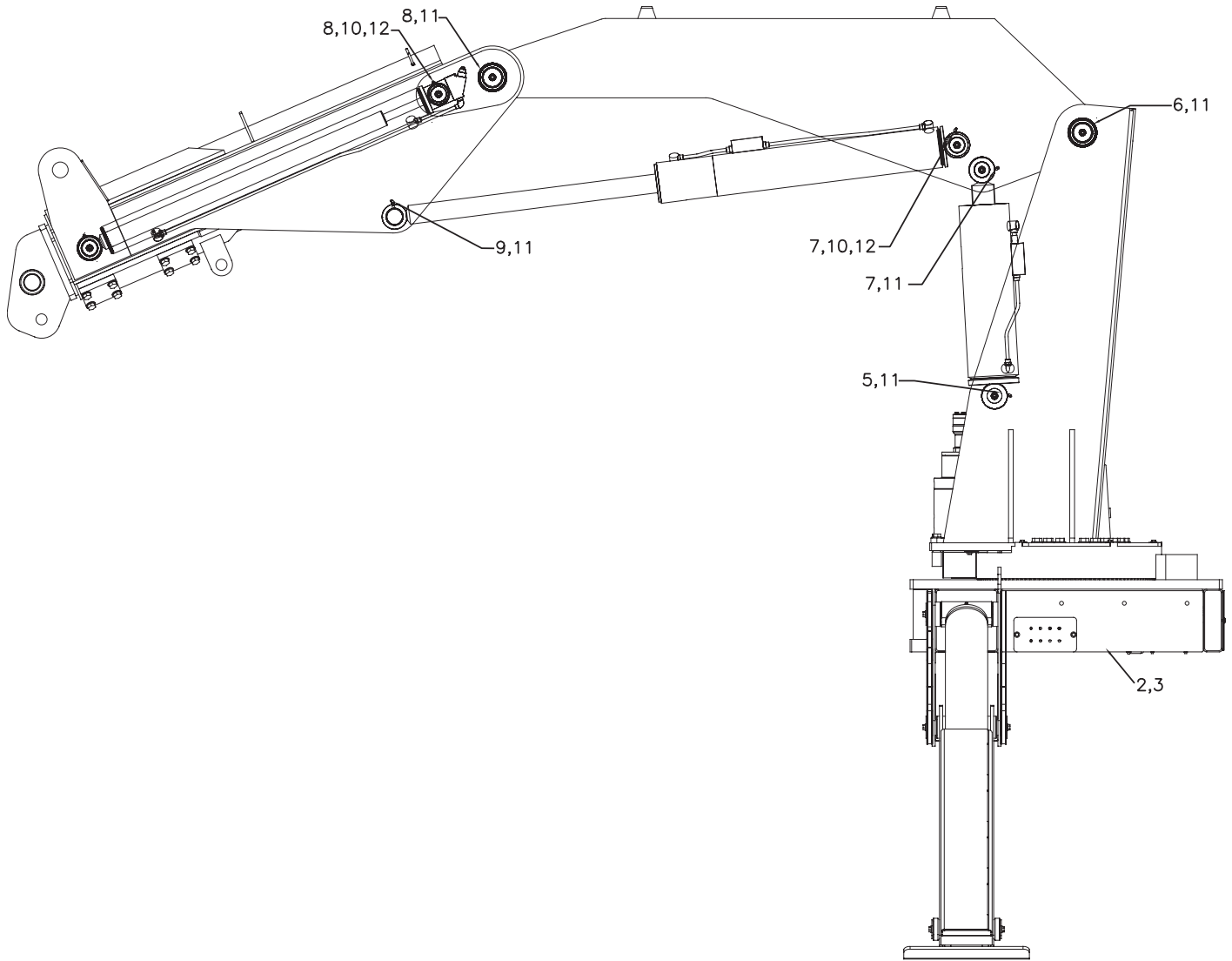
Control Kit (434 MHz Version) - PN 92665



Control Kit (434 MHz Version) - PN 92665 Parts List

PN 92664			
ITEM	PART	DESCRIPTION	QTY
01	93084	TRANSMITTER SCANRECO 9/135/17/23/28	1
02	93083	RECEIVER ASM SCANRECO OTR 434 MHZ	1
03	89152	CABLE BACKUP 10M SCANRECO	1
04	89154	BATTERY SCANRECO	2
05	89155	CHARGER BATTERY SCANRECO	1
06	89639	STRAP CARRYING SCANRECO	1
07	93191	CABLE ASM M12 5P M-F RA 5FT	1REF
08	93192	DUST CAP M12 SKT BLACK PLASTIC	1REF
09	93695	WIRE HRNS CRANE 9K-28K	1
10	93204	WIRE HRNS CRANE MAST LRG OTR	1
11	68797	WIRE HARNESS MAIN BOOM 28000 TM LTS	2
12	125411	WIRE HRNS OTR COOLER FAN HTP	1
13	78246	BACKUP ALARM 87 DECIBEL	1
14	94004	E-STOP SWITCH ASM 17/23/28K CRANE	1
15	C4815	SWITCH, TOGGLE ON/OFF	3
16	8623	SWITCH TOGGLE ON-OFF-ON SGL P DBL T	1
17	125412	RELAY ASM COOLER FAN PWR INTRLK	1
18	125415	RELAY ASM HTP ALARM INDICATOR	1
19	76063	CAP 2P PLUG AT CONNECTOR	1
REV. B			

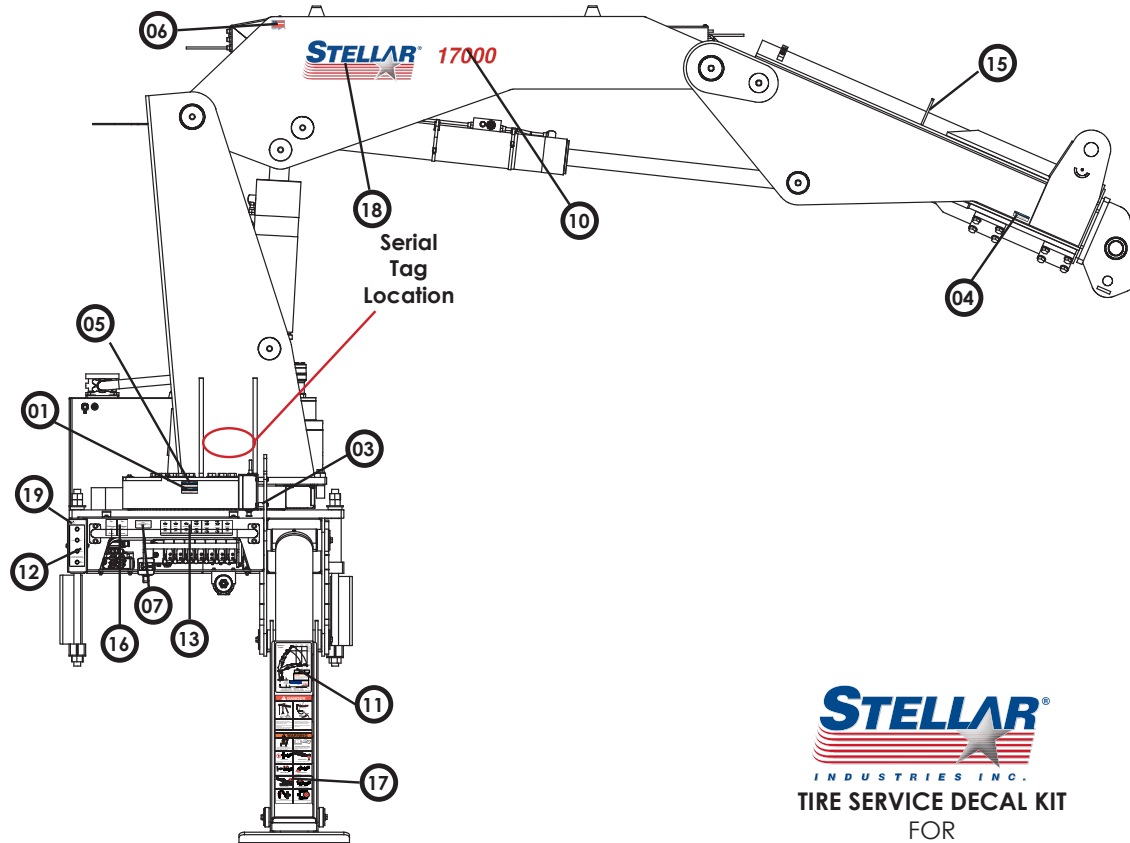
Grease Kit - PN 127063



PN 127063

ITEM	PART No.	DESCRIPTION	QTY.
1	104015	HOSE & FTG KIT GREASE LINE GEAR BRG. (incl:2-3)	1
2	-	HOSE-HYD 0.13 X 30	1ref
3	104019	FTG 4-2 PTC-MP STRAIGHT GREASE LINE	1ref
4	103071	HOSE & FTG KIT GREASE LINE 23000 V3 (incl:5-12)	1
5	105342	HOSE-HYD 0.13 X 68	1ref
6	105343	HOSE-HYD 0.13 X 138	1ref
7	105344	HOSE-HYD 0.13 X 156	2ref
8	105345	HOSE-HYD 0.13 X 245	2ref
9	105346	HOSE-HYD 0.13 X 259	1ref
10	104019	FTG 4-2 PTC-MP STRAIGHT GREASE LINE	2ref
11	104020	FTG 4-2 PTC-MP 90 GREASE LINE	5ref
12	104021	FTG 2-2 MP-FP 45 GREASE LINE	2ref

Decal Placement - PN 54621



TIRE SERVICE DECAL KIT
FOR
17000 - PN 54621

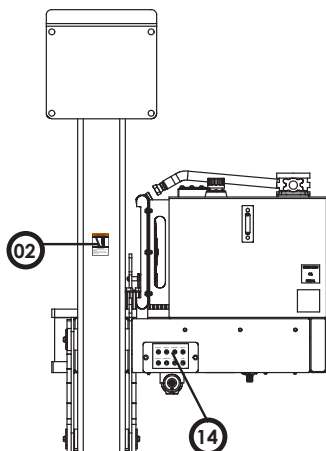
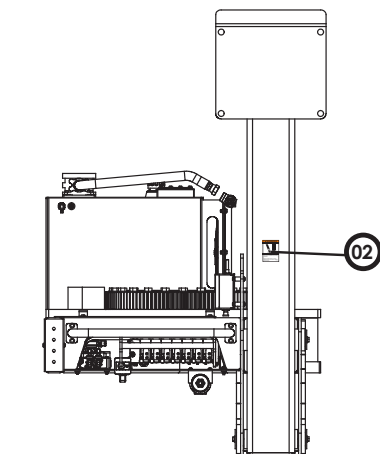
DECALS IN BOLD ARE NOT SHOWN - PLACE ON BODY

General Tire Crane Decal Kit - PN 85362

Item No.	PN	Description	Location	QTY
01	15172	DECAL ASME/ANSI B30.22/B30.5	Crane Base	1
02	C4795	DECAL DANGER FOOT	Stabilizers - CS & SS	2
03	73929	DECAL RADIO PRESSURE WASHER NOTICE	Near Remote Receiver	1
04	16973	DECAL USE STELLAR APPROVED ATTACHMT	Main Boom - Both Sides	2
05	9188	DECAL WORM GEAR LUBRICATION	Crane Base	1
06	35234	MADE IN THE USA - STELLAR	Main Boom - Both Sides	2
07	4214	DECAL CONTACT STELLAR	Crane Base	1
08	C4545	DECAL DANGER ELECTROCUTION	Four Corners of the Body	4
09	C5910	DECAL STELLAR LOGO 4.00X9.50 PRE-MASKED	Body - Optional	3

17000 Decal Kit - PN 85369

Item No.	PN	Description	Location	QTY
10	54595	DECAL 17000 ID PRE-MASKED	Main Boom - Both Sides	2
11	54620	DECAL CAPACITY 17000	Stabilizers CS & SS	2
12	16620	DECAL SWITCH PLATE 28000	Crane Control Station	1
13	54771	DECAL V8 CONTROL 17000	Crane Control Station	1
14	41918	DECAL 9000 GREASE KIT	Crane Base - CS	1
15	47404	DECAL COUPLERS 23000	Main Boom	1
16	13036	DECAL CRANE OUTRIGGER	Crane Base	1
17	54781	DECAL WARNING PLACARD	Stabilizers - CS & SS	2
18	54589	DECAL STELLAR LOGO 8X22.25 PRE-MASKED	Main Boom - Both Sides	2
19	125941	DECAL OIL TEMP	Crane Base	1



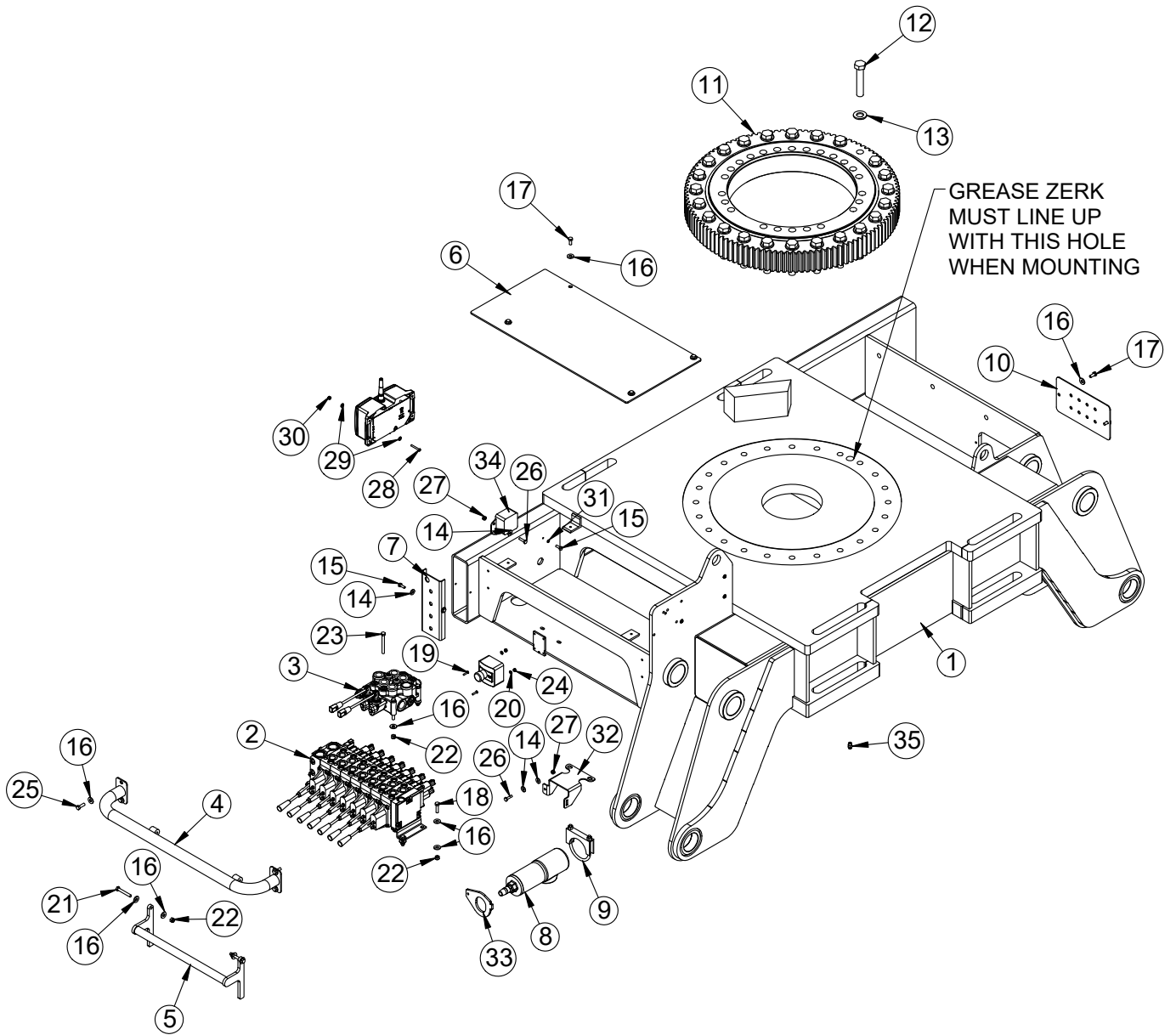
Page left intentionally blank.

Chapter 3 - Assembly Drawings

Chapter Contents

Base Assembly - PN 54372	30
Base Assembly - PN 54372 Parts List	31
Base Assembly Rear MNT RH Drive - PN 130733	32
Base Assembly Rear MNT RH Drive - PN 130733 Parts.....	33
Bearing Assembly - PN 53500	34
Valve Bank - PN 53514	35
Stabilizer Valve Bank - PN 55400	36
Gearbox - PN 53499	37
Mast Assembly - PN 97741.....	38
Mast Assembly - PN 97741 Parts List.....	39
Main Cylinder Assembly - PN 54310.....	40
Main Cylinder Assembly - PN 54310 Parts List.....	41
Main Boom Assembly - PN 97658	42
Main Boom Assembly - PN 97658	43
Outer Cylinder Assembly - PN 54313	44
Outer Cylinder Assembly - PN 54313 Parts List	45
Extension Boom Assembly - PN 71261	46
Extension Boom Assembly - PN 71261 Parts List	47
Extension Cylinder Assembly - PN 53515.....	48
Extension Cylinder Assembly - PN 53515 Parts List.....	49
Stabilizer Assembly - PN 54414.....	50
Stabilizer Assembly - PN 54414 Parts List.....	51
Stabilizer Cylinder Assembly - PN 54415.....	52
Stabilizer Cylinder Assembly - PN 54415 Parts List.....	53
Reservoir Assembly - PN 85936	54
Reservoir Assembly - PN 85936 Parts List	55
Optional 15 Ton Hook Kit - PN 54768	56
Radio Transmitter - PN 89149/93084.....	57
Transmitter Docking Station Asm (Opt.) - PN 97334	58
Transmitter Docking Station (Opt.) - PN 97334 Parts List	59
Wiring Diagram Docking Station - PN 65989.....	60

Base Assembly - PN 54372



Base Assembly - PN 54372 Parts List

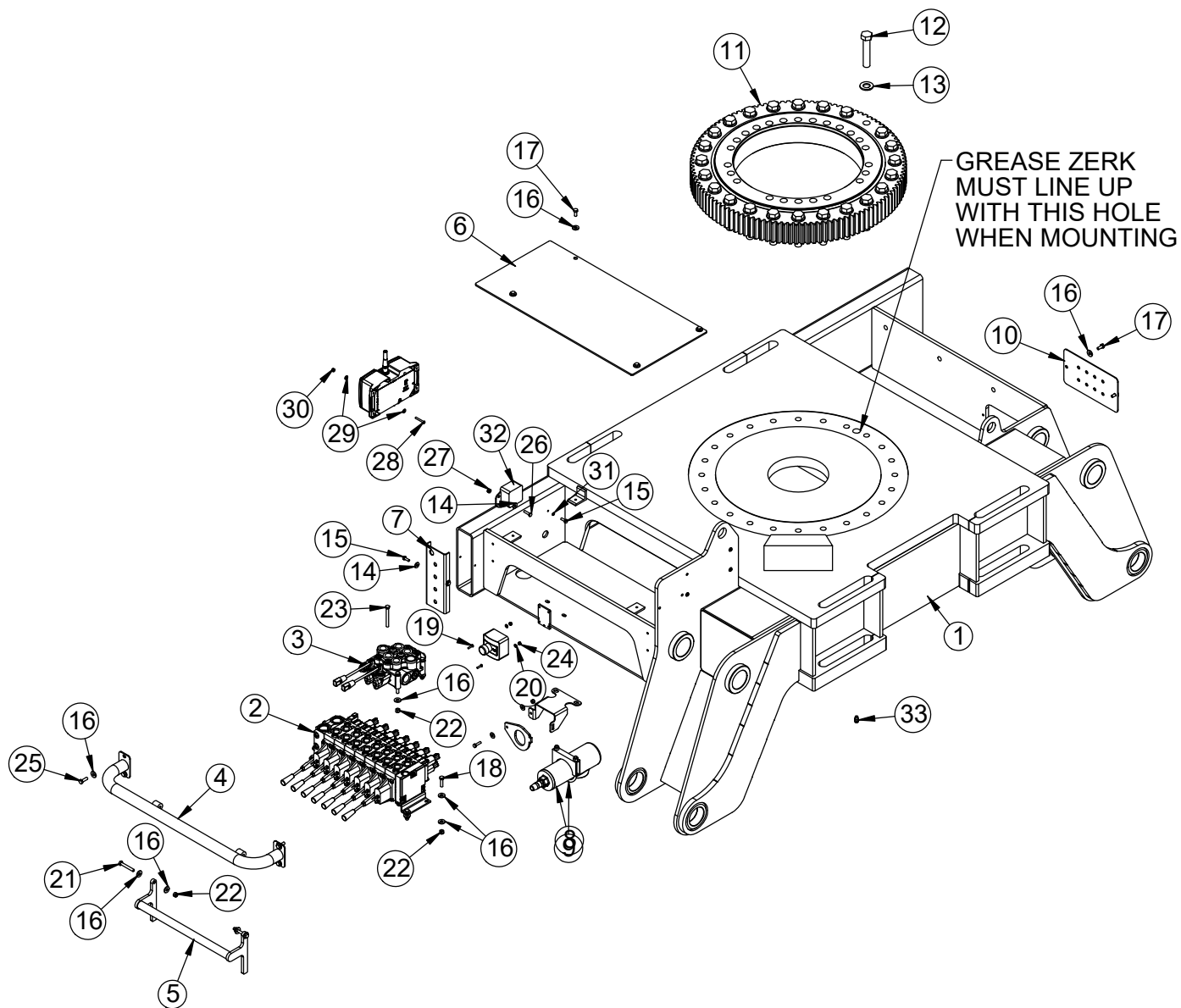
PN 54372			
ITEM	PART	DESCRIPTION	QTY
1	54360	BASE 17000	1
2	53514	VB 7 SECT DANFOSS PVG32 17000	1
3	55400	VB 2-SECT VDM8-1-1-YE-WCHA	1
4	54354	GUARD VB 17000	1
5	41082	BAR PANIC 23000 PC RED	1
6	54356	PLATE COVER 17000	1
7	49327	PLATE SWITCH MTG 15000 PC WHITE	1
8	78432	FILTER HIGH PRESSURE 1.06-12SAE 5000PSI 10 MICRON	1
9	78433	CLAMP HIGH PRESSURE FILTER 3.00	1
10	54410	PLATE GREASE LINE MTG 17000	1
11	53500	BEARING TURNTABLE 17000	1
12	17962	CAP SCR 0.88-9X4.50 HHGR9	24
13	18041	WASHER 0.88 SAE FLAT YELLOW GR9	24
14	0340	WASHER 0.25 USS FLAT	6
15	0479	CAP SCR 0.25-20X0.75 HHGR5	3
16	0343	WASHER 0.31 USS FLAT	25
17	0420	CAP SCR 0.31-18X0.75 HHGR5	6
18	0485	CAP SCR 0.31-18X1.25 HHGR5	4
19	22183	SCREW #8-32X0.75 BTNHD SS	2
20	5290	WASHER #8 SAE FLAT	2
21	C0927	CAP SCR 0.31-18X2.25 HHGR5	2
22	0342	NUT 0.31-18 HHGR5 NYLOC	9
23	C0930	CAP SCR 0.31-18X3.00 HHGR5	3
24	22186	NUT #8-32 HH NYLOC SS	2
25	C0922	CAP SCR 0.31-18X1.00 HHGR5	4
26	0480	CAP SCR 0.25-20X1.00 HHGR5	3
27	0333	NUT 0.25-20 HHGR5 NYLOC	3
28	21039	CAP SCR #10-24X1.50 BTNHD SS	4
29	D0178	WASHER #10 SAE FLAT	8
30	26034	NUT #10-24 HH NYLOC	4
31	0521	WASHER 0.25 LOCK	1
32	131087	PLATE PRESSURE FILTER GUARD	1
33	131088	PLATE PRESSURE FILTER GUARD REMOVABLE	1
34	78246	BACKUP ALARM 87 DECIBEL	1
35	104019	FTG 4-2 PTC-MP STRAIGHT GREASE LINE	1
REV. H			

NOTES:

FILTER ELEMENT: 47860.

BACK UP ALARM, E-STOP, AND GREASE FITTINGS SHOWN FOR REFERENCE.

Base Assembly Rear MNT RH Drive - PN 130733



Base Assembly Rear MNT RH Drive - PN 130733 Parts

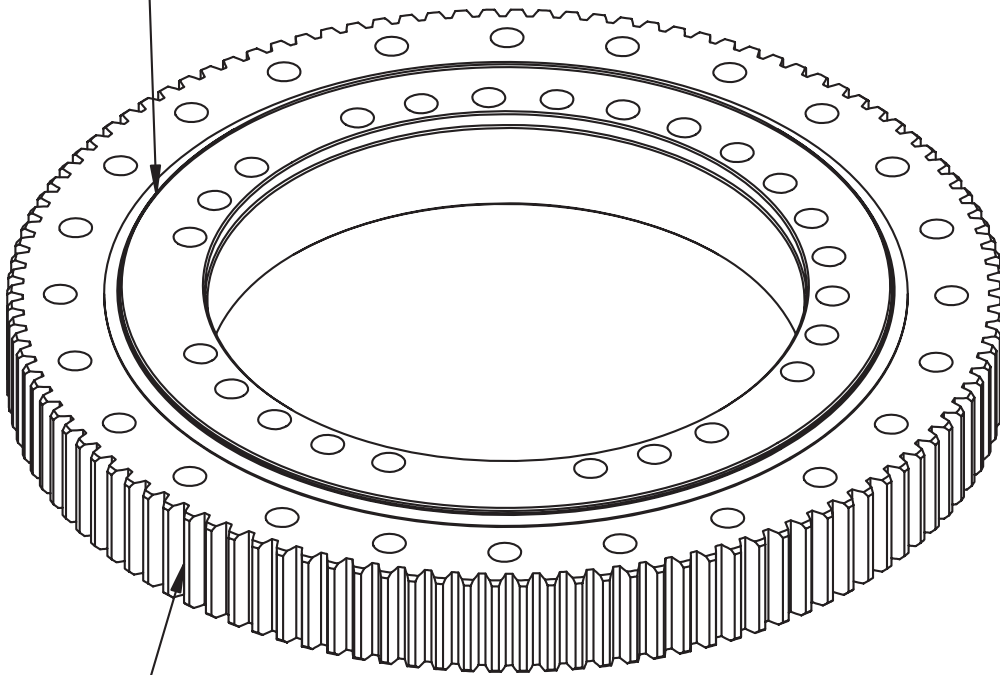
PN 130733			
ITEM	PART	DESCRIPTION	QTY
1	130734	BASE 17000 REAR MNT RH DRIVE	1
2	53514	VB 7 SECT DANFOSS PVG32 17000	1
3	55400	VB 2-SECT VDM8-1-1-YE-WCHA	1
4	54354	GUARD VB 17000	1
5	41082	BAR PANIC 23000 PC RED	1
6	54356	PLATE COVER 17000	1
7	49327	PLATE SWITCH MTG 15000 PC WHITE	1
8	78432	FILTER HIGH PRESSURE 1.06-12SAE 5000PSI 10 MICRON	1
9	78433	CLAMP HIGH PRESSURE FILTER 3.00	1
10	54410	PLATE GREASE LINE MTG 17000	1
11	53500	BEARING TURNTABLE 17000	1
12	17962	CAP SCR 0.88-9X4.50 HHGR9	24
13	18041	WASHER 0.88 SAE FLAT YELLOW GR9	24
14	0340	WASHER 0.25 USS FLAT	6
15	0479	CAP SCR 0.25-20X0.75 HHGR5	3
16	0343	WASHER 0.31 USS FLAT	25
17	0420	CAP SCR 0.31-18X0.75 HHGR5	6
18	0485	CAP SCR 0.31-18X1.25 HHGR5	4
19	22183	SCREW #8-32X0.75 BTNHD SS	2
20	5290	WASHER #8 SAE FLAT	2
21	C0927	CAP SCR 0.31-18X2.25 HHGR5	2
22	0342	NUT 0.31-18 HHGR5 NYLOC	9
23	C0930	CAP SCR 0.31-18X3.00 HHGR5	3
24	22186	NUT #8-32 HH NYLOC SS	2
25	C0922	CAP SCR 0.31-18X1.00 HHGR5	4
26	0480	CAP SCR 0.25-20X1.00 HHGR5	3
27	0333	NUT 0.25-20 HHGR5 NYLOC	3
28	21039	CAP SCR #10-24X1.50 BTNHD SS	4
29	D0178	WASHER #10 SAE FLAT	8
30	26034	NUT #10-24 HH NYLOC	4
31	0521	WASHER 0.25 LOCK	1
32	78246	BACKUP ALARM 87 DECIBEL	1
33	104019	FTG 4-2 PTC-MP STRAIGHT GREASE LINE	1
34	131087	PLATE PRESSURE FILTER GUARD	1
35	131088	PLATE PRESSURE FILTER GUARD REMOVABLE	1
REV. A			

NOTES:
FILTER ELEMENT: 47860.
BACK UP ALARM & E-STOP SHOWN FOR REFERENCE.

Bearing Assembly - PN 53500

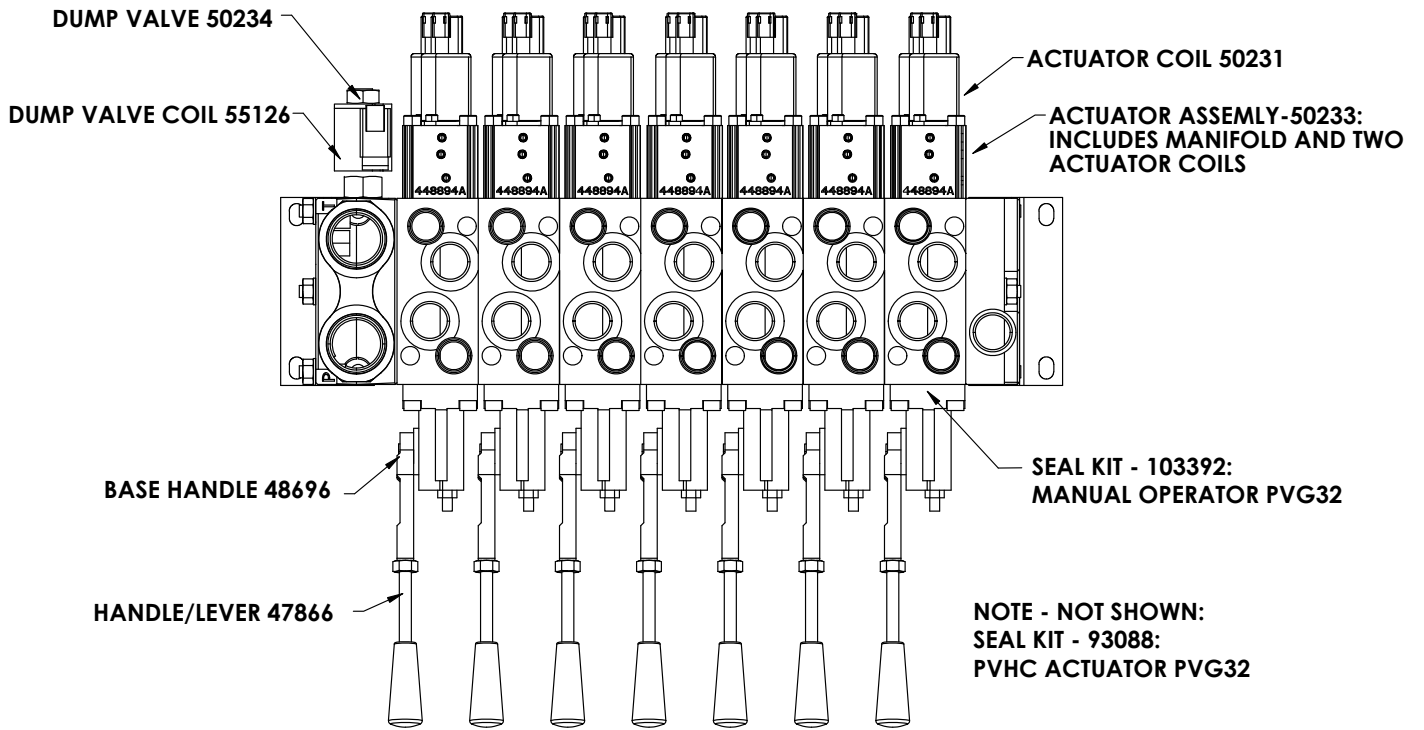
**USE EP2 LITHIUM COMPLEX GREASE, STELLAR PN 78090
ON BEARING RACE**

**GREASE MAIN BEARING RACE THROUGH
REMOTELY MOUNTED GREASE ZERK**

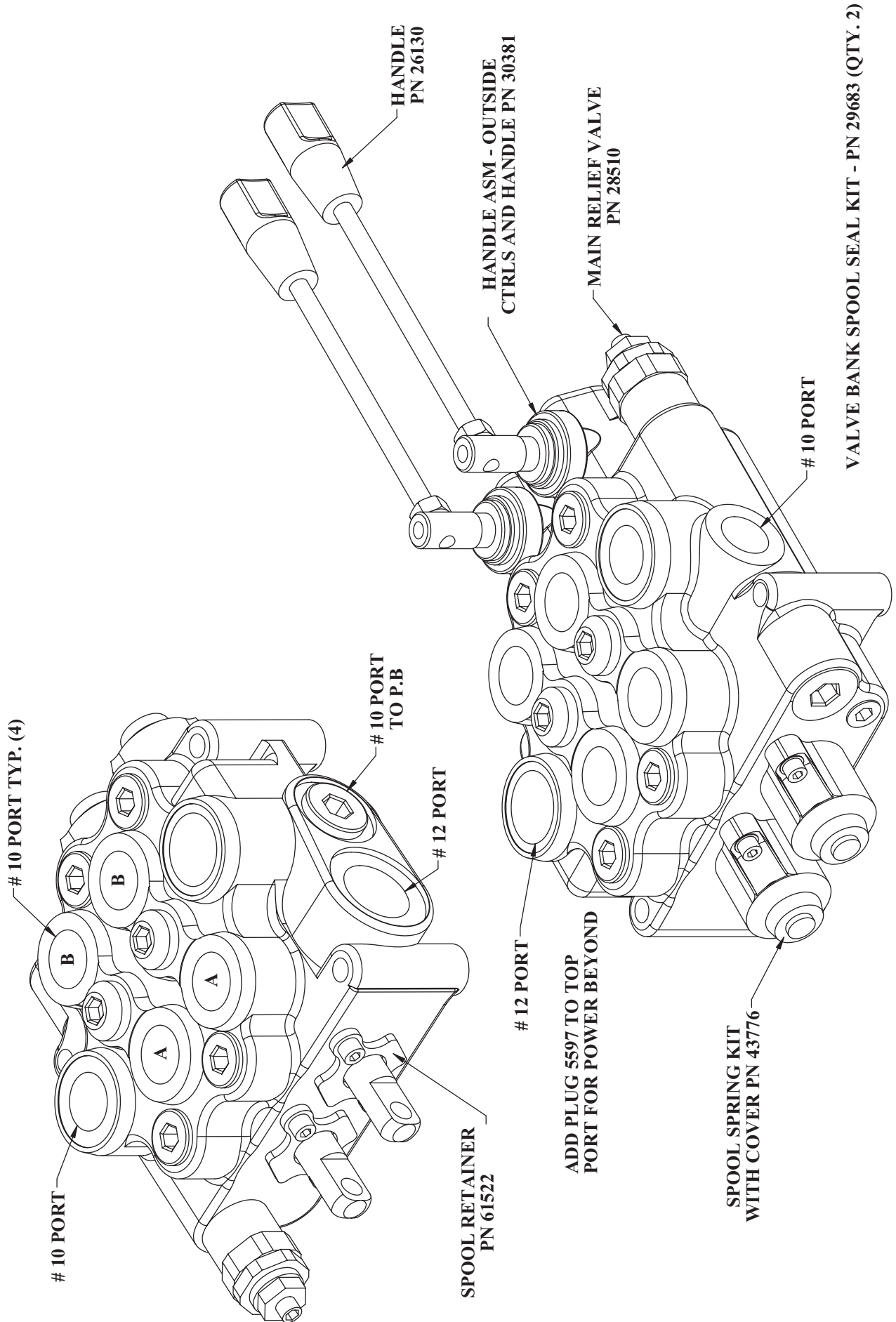


**USE MOLY GREASE 936SF HEAVY, STELLAR PN 4460
ON BEARING GEAR TEETH**

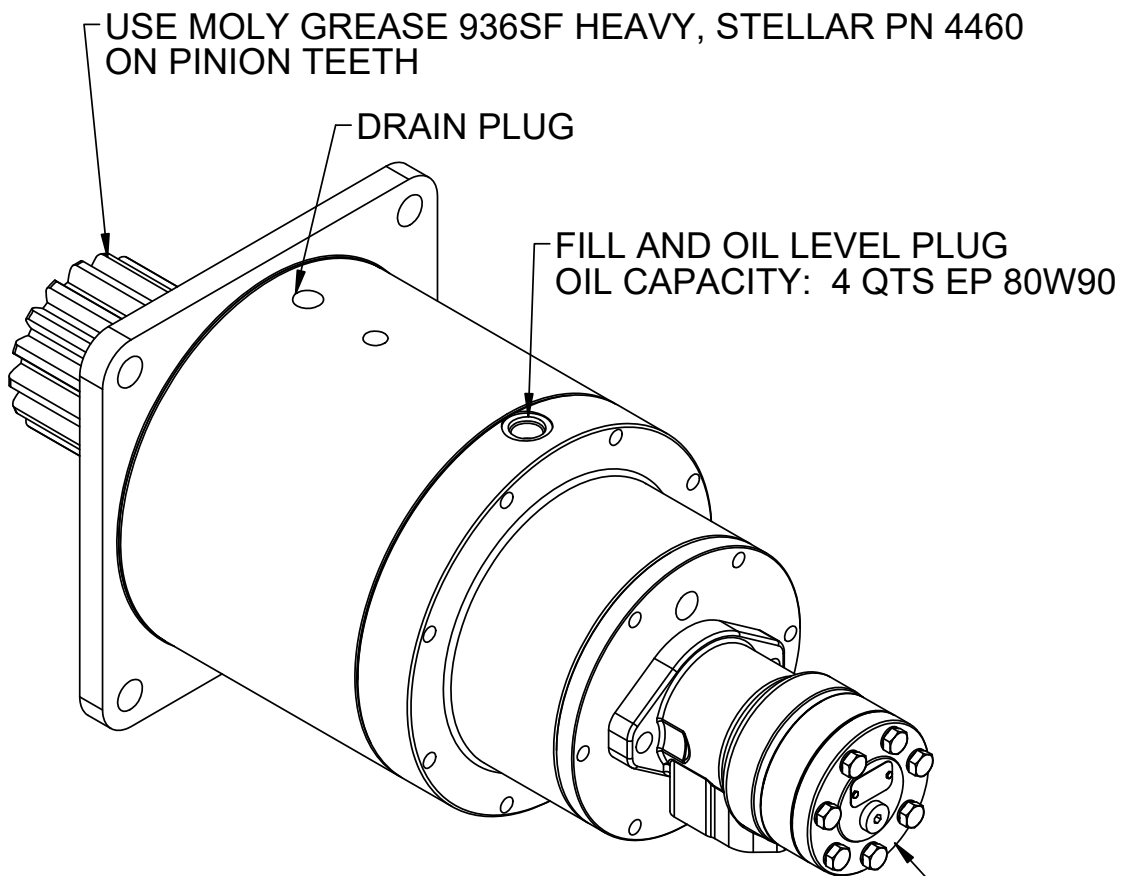
Valve Bank - PN 53514



Stabilizer Valve Bank - PN 55400

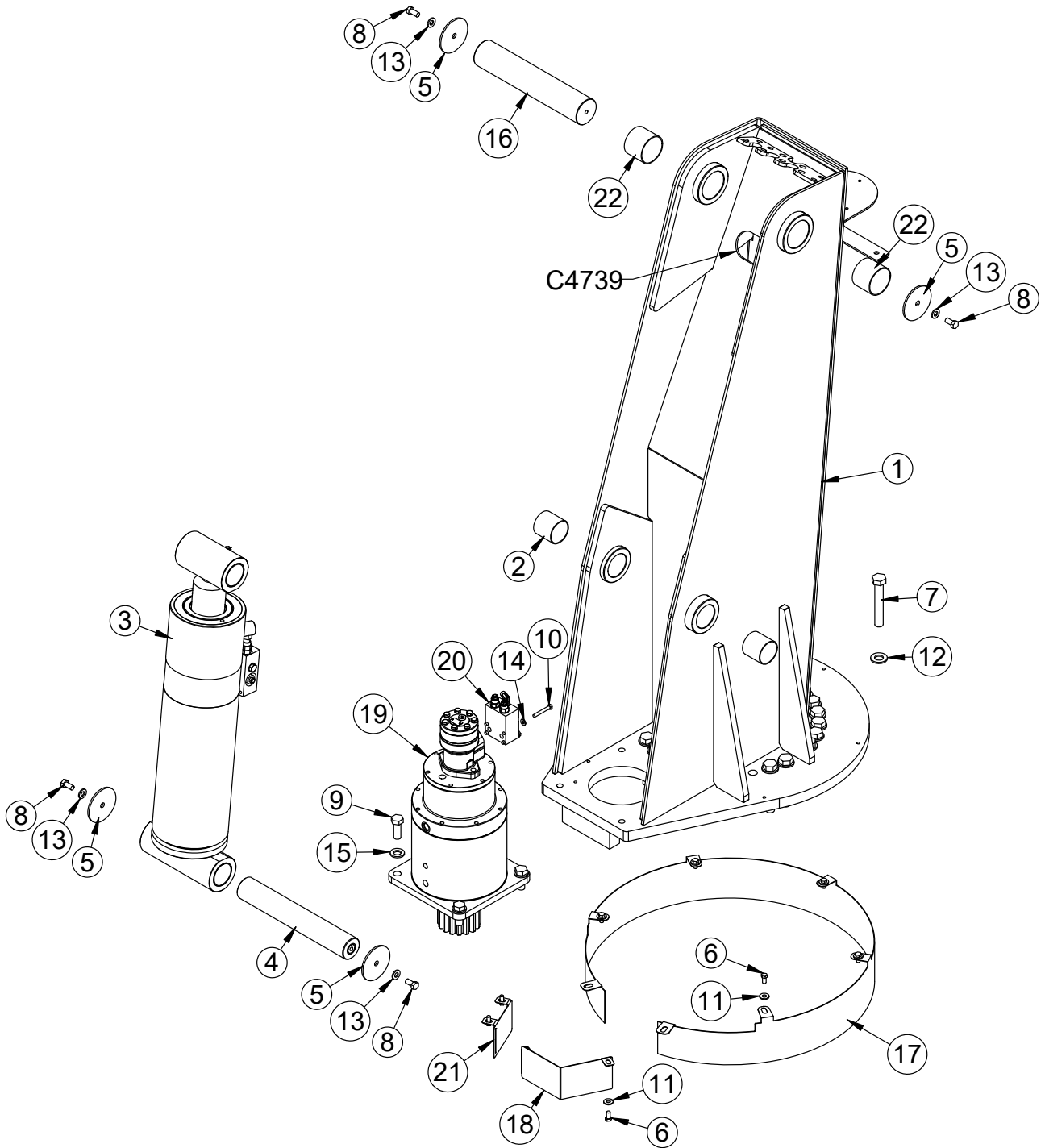


Gearbox - PN 53499



P/N 81028, MOTOR 130CC MANIFOLD MOUNT PNT BLACK
P/N 81029, SEAL KIT WHITE 255 MOTOR

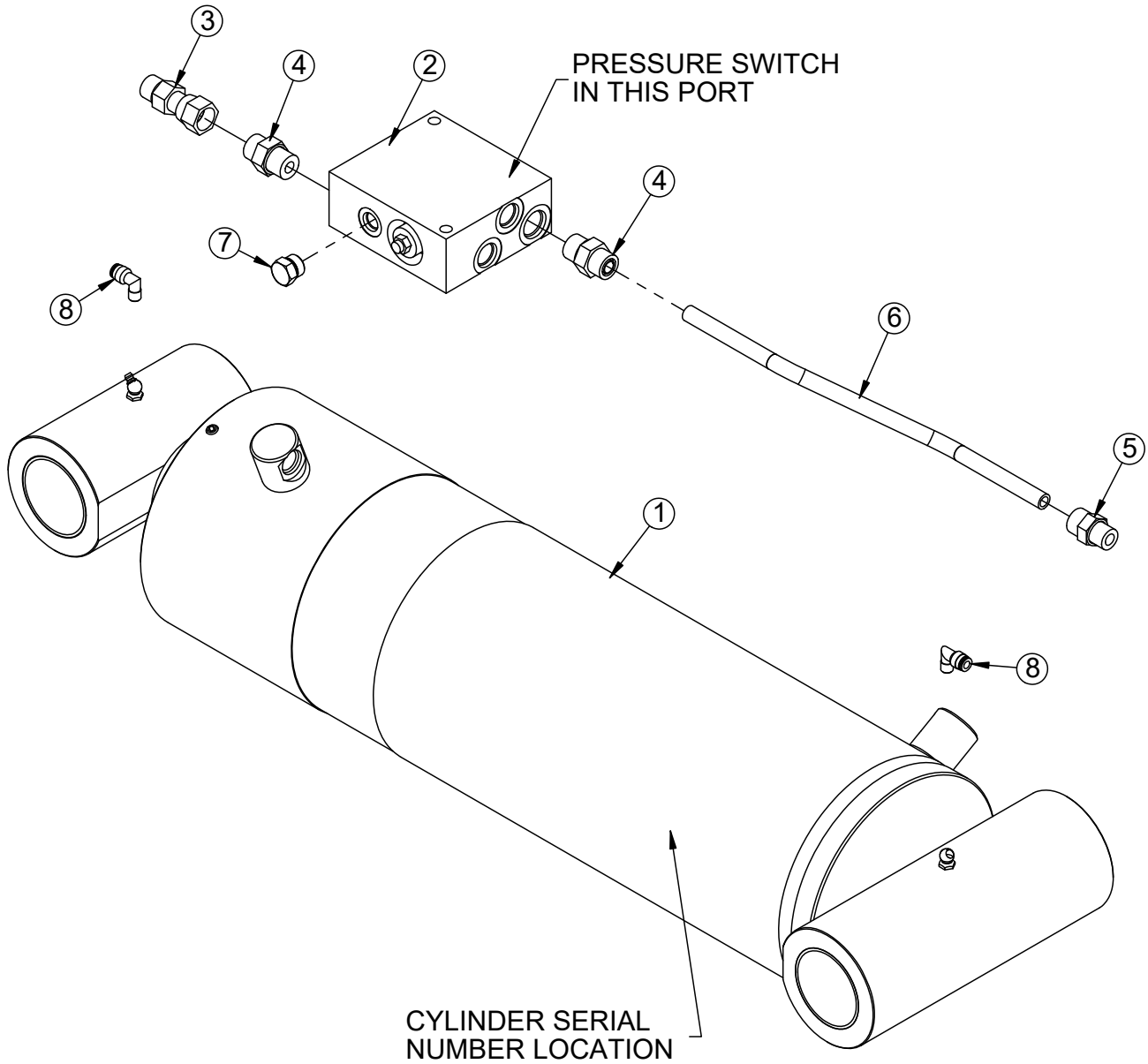
Mast Assembly - PN 97741



Mast Assembly - PN 97741 Parts List

PN 97741			
ITEM	PART	DESCRIPTION	QTY
1	97742	MAST 17000 V3	1
2	54401	BUSHING COMPOSITE FIBER 2.50X2.50	2
3	54310	CYLINDER ASM 7.00X20.00	1
4	54317CR	PIN 2.50X15.75 D&T ZC	1
5	13315	PIN CAP 0.56X4.00X0.19 YZ	4
6	492	CAP SCR 0.38-16X0.75 HHGR5	8
7	17964	CAP SCR 0.88-9X5.50 HHGR9	24
8	10172	CAP SCR 0.50-13X1.00 HHGR8	4
9	4543	CAP SCR 0.75-10X2.00 HHGR8	4
10	C0927	CAP SCR 0.31-18X2.25 HHGR5	4
11	346	WASHER 0.38 USS FLAT	8
12	18041	WASHER 0.88 SAE FLAT YELLOW GR9	24
13	D0790	WASHER 0.50 SAE FLAT YELLOW GR8	4
14	5591	WASHER 0.31 SAE FLAT YELLOW GR8	4
15	C6219	WASHER 0.75 SAE FLAT YELLOW GR8	4
16	54318	PIN 3.00X15.25 D&T SS	1
17	54376	GUARD SIDE PLATE TTB 17000 PC BLACK	1
18	54424	GEAR COVER 17000	1
19	53499	GEARBOX W/MOTOR 17000	1
20	55397	VALVE BLOCK CBCA-LAN-YVN W/FITTING	1
21	54425	GEAR COVER SMALL 17000	1
22	54374	BUSHING COMPOSITE FIBER 3.00X2.50	2
REV. A			

Main Cylinder Assembly - PN 54310



Main Cylinder Assembly - PN 54310 Parts List

PN 54310			
ITEM	PART	DESCRIPTION	QTY
1	53502	CYLINDER 7.00X20.00	1
2	15995	MANIFOLD ASM DUAL T2A 5000PSI	1
3	19917	FTG 8-8 FFSS-MORB STRAIGHT	1
4	C2252	FTG 8-10 MFS-MORB STRAIGHT	2
5	1554	FTG 8-8 MFS-MORB STRAIGHT	1
6	54311	TUBE ASM 0.50X12.44 YZ	1
7	560	FTG 6 MFS PLUG	1
8	104020	FTG 4-2 PTC-MP 90 GREASE LINE	2
REV. C			

NOTES:

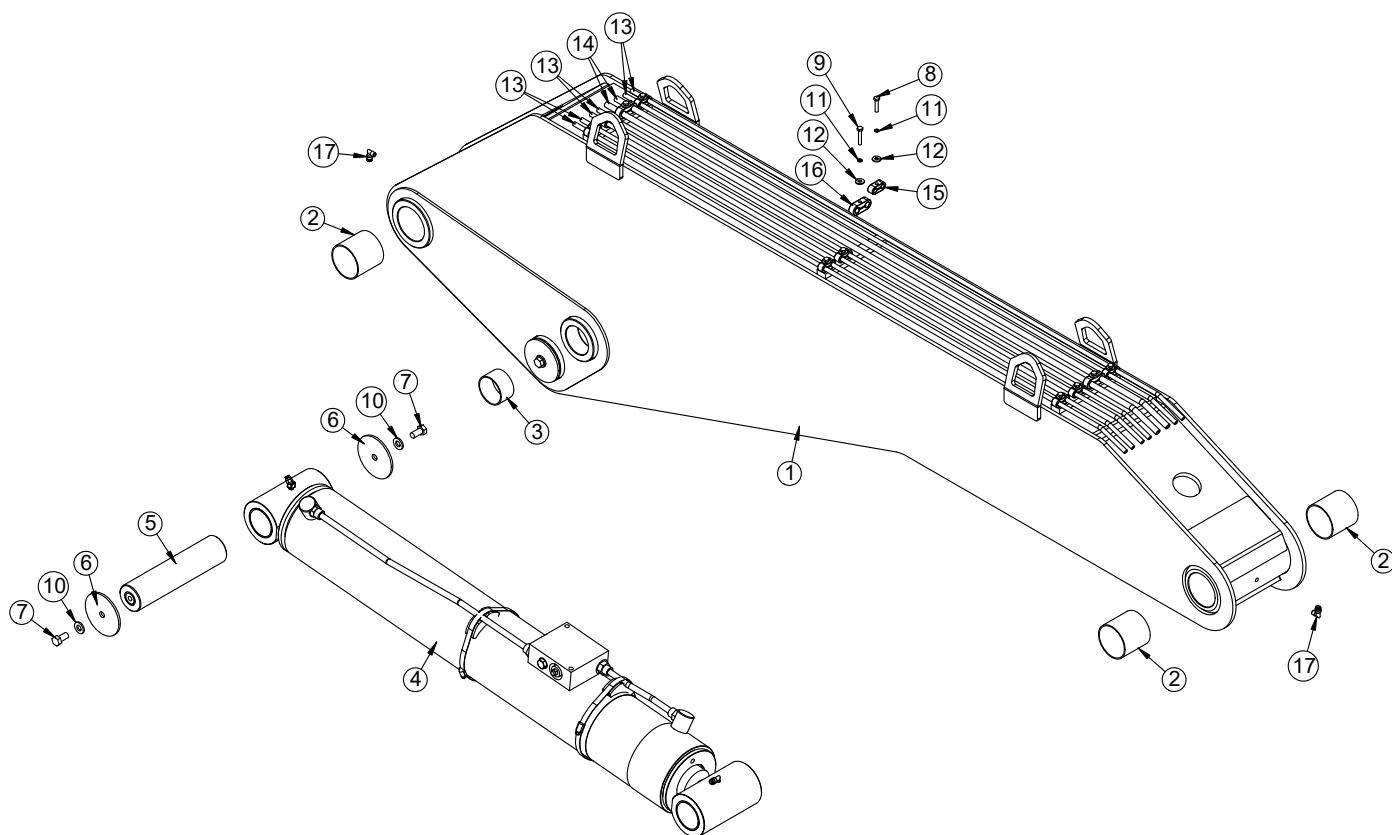
C-BALANCE VALVE: C1090

CYLINDER SEAL KIT: 57271

BUSHINGS INCLUDED IN: 53502

GREASE FITTINGS SHOWN FOR REFERENCE.

Main Boom Assembly - PN 97658



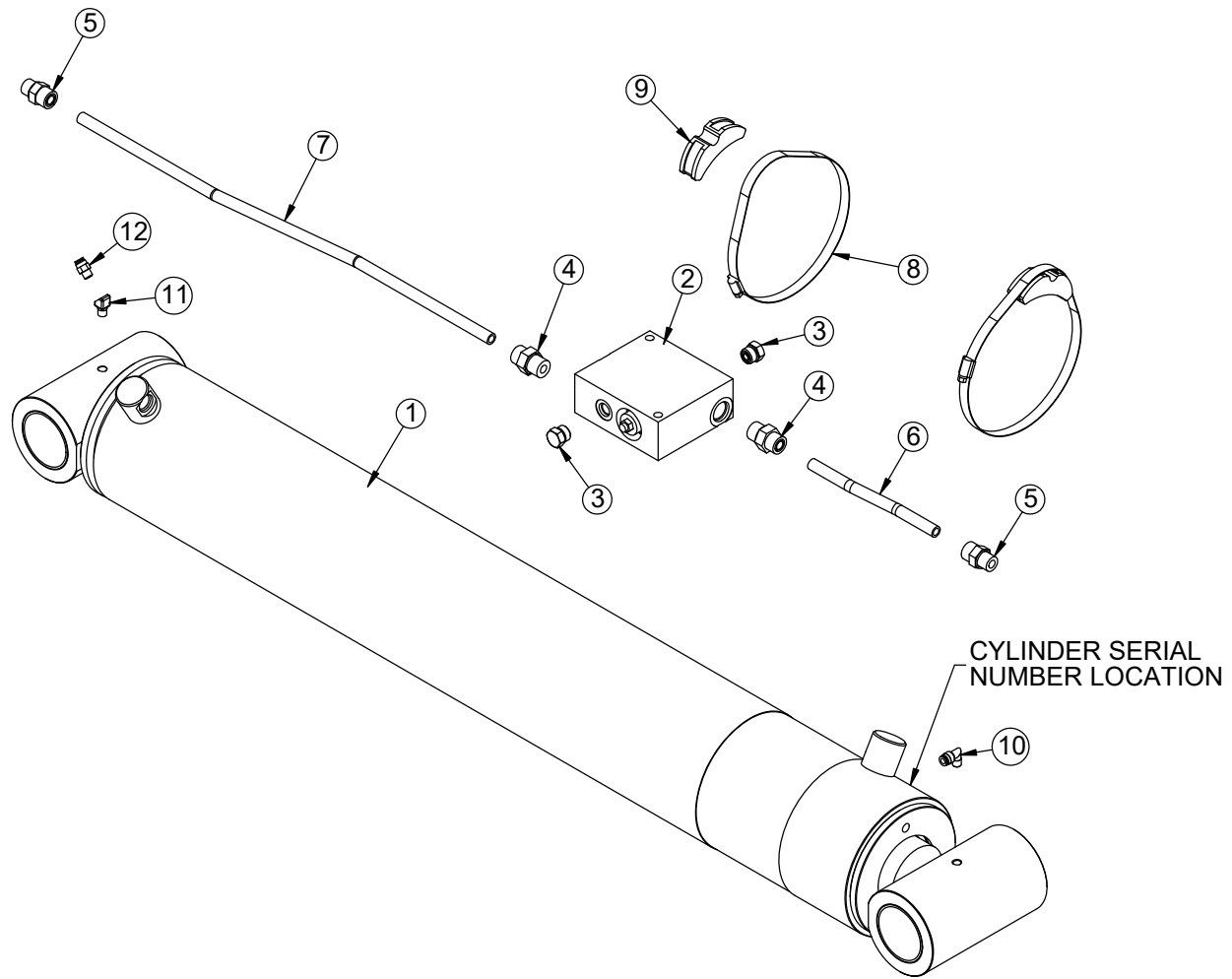
Main Boom Assembly - PN 97658

PN 97658			
ITEM	PART	DESCRIPTION	QTY
1	97659	INNER BOOM 17000 V3	1
2	2227	BUSHING BPC48DXR48 3.00X3.00	4
3	54319	BUSHING COMPOSITE 2.50X1.50	4
4	54313	CYLINDER ASM 5.50X39.50	1
5	54322CR	PIN 2.50X10.38 D&T ZC	2
6	13315	PIN CAP 0.56X4.00X0.19 YZ	4
7	10172	CAP SCR 0.50-13X1.00 HHGR8	4
8	0437	CAP SCR 0.25-20X1.25 HHGR5	9
9	0220	CAP SCR 0.25-20X1.50 HHGR5	3
10	D0790	WASHER 0.50 SAE FLAT YELLOW GR8	4
11	0521	WASHER 0.25 LOCK	12
12	0340	WASHER 0.25 USS FLAT	12
13	96569	TUBE ASM 0.38X66.00 MAIN BOOM 13500 YZ	6
14	96568	TUBE ASM 0.50X66.00 MAIN BOOM 13500 YZ	2
15	96567	CLAMP 0.38 PORT TUBE TWIN - STAUFF LNGF	9
16	96566	CLAMP 0.50 PORT TUBE TWIN - STAUFF LNGF	3
17	104020	FTG 4-2 PTC-MP 90 GREASE LINE	2
REV. A			

ITEMS NOT SHOWN		
ITEMS	DESCRIPTION	QTY
63038	TRIM EDGE 0.50X0.59 AL (RM)	1.3 FT

NOTES:
GREASE FITTINGS SHOWN FOR REFERENCE.

Outer Cylinder Assembly - PN 54313



Outer Cylinder Assembly - PN 54313 Parts List

PN 54313			
ITEM	PART	DESCRIPTION	QTY
1	53503	CYLINDER 5.50X39.00	1
2	15995	MANIFOLD ASM DUAL T2A 5000PSI	1
3	0560	FTG 6 MFS PLUG	2
4	C2252	FTG 8-10 MFS-MORB STRAIGHT	2
5	1554	FTG 8-8 MFS-MORB STRAIGHT	2
6	54314	TUBE ASM 0.50X6.96 YZ	1
7	54315	TUBE ASM 0.50X24.14 YZ	1
8	19369	HOSE CLAMP 4.13-7.00 5416K38	2
9	18701	CLAMP PORT TUBE ZR518	2
10	104020	FTG 4-2 PTC-MP 90 GREASE LINE	1
11	104021	FTG 2-2 MP-FP 45 GREASE LINE	1
12	104019	FTG 4-2 PTC-MP STRAIGHT GREASE LINE	1
REV. C			

NOTES:

C-BALANCE VALVE: C1090

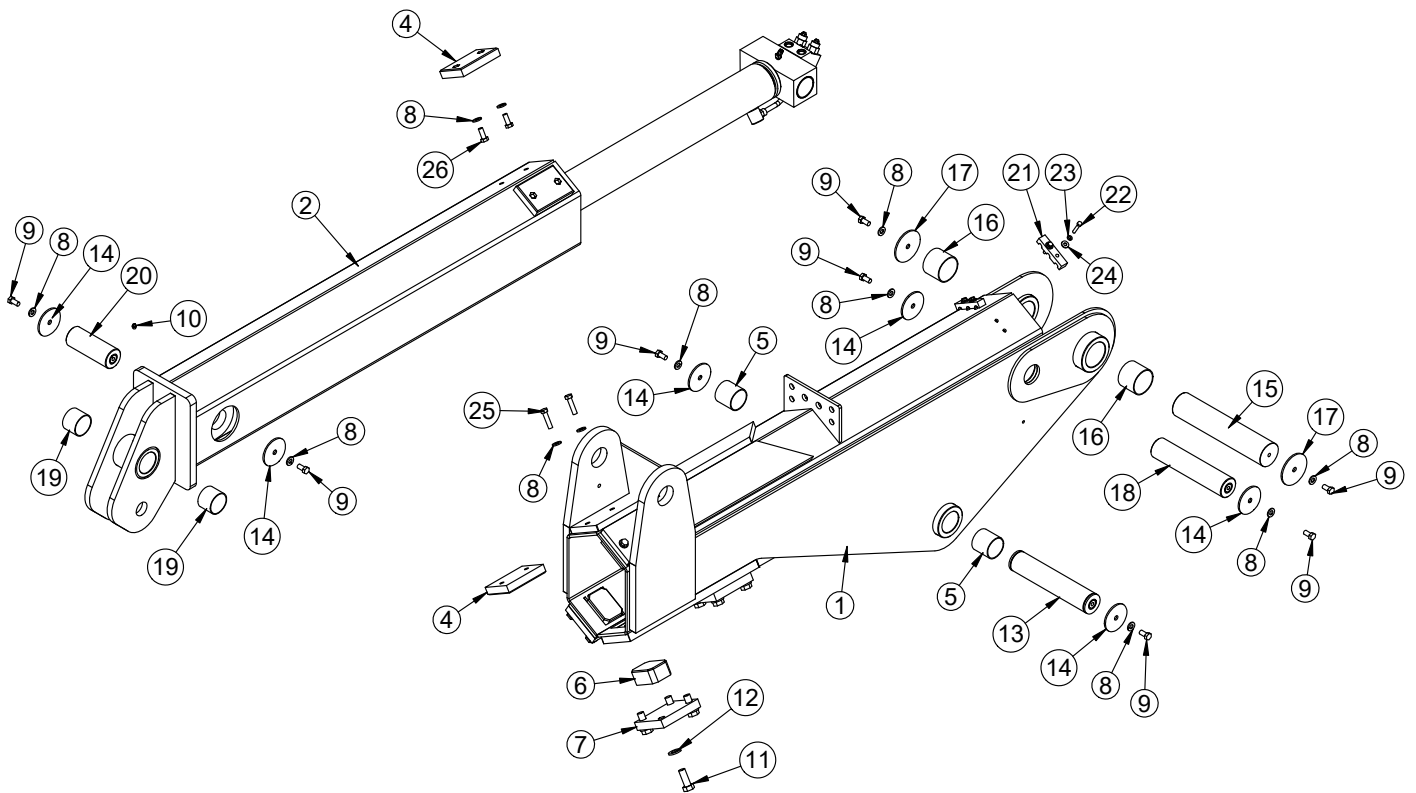
CYLINDER SEAL KIT: 57269

BUSHING PART NUMBER: 17320

BUSHINGS INCLUDED IN: 53503

GREASE FITTINGS SHOWN FOR REFERENCE.

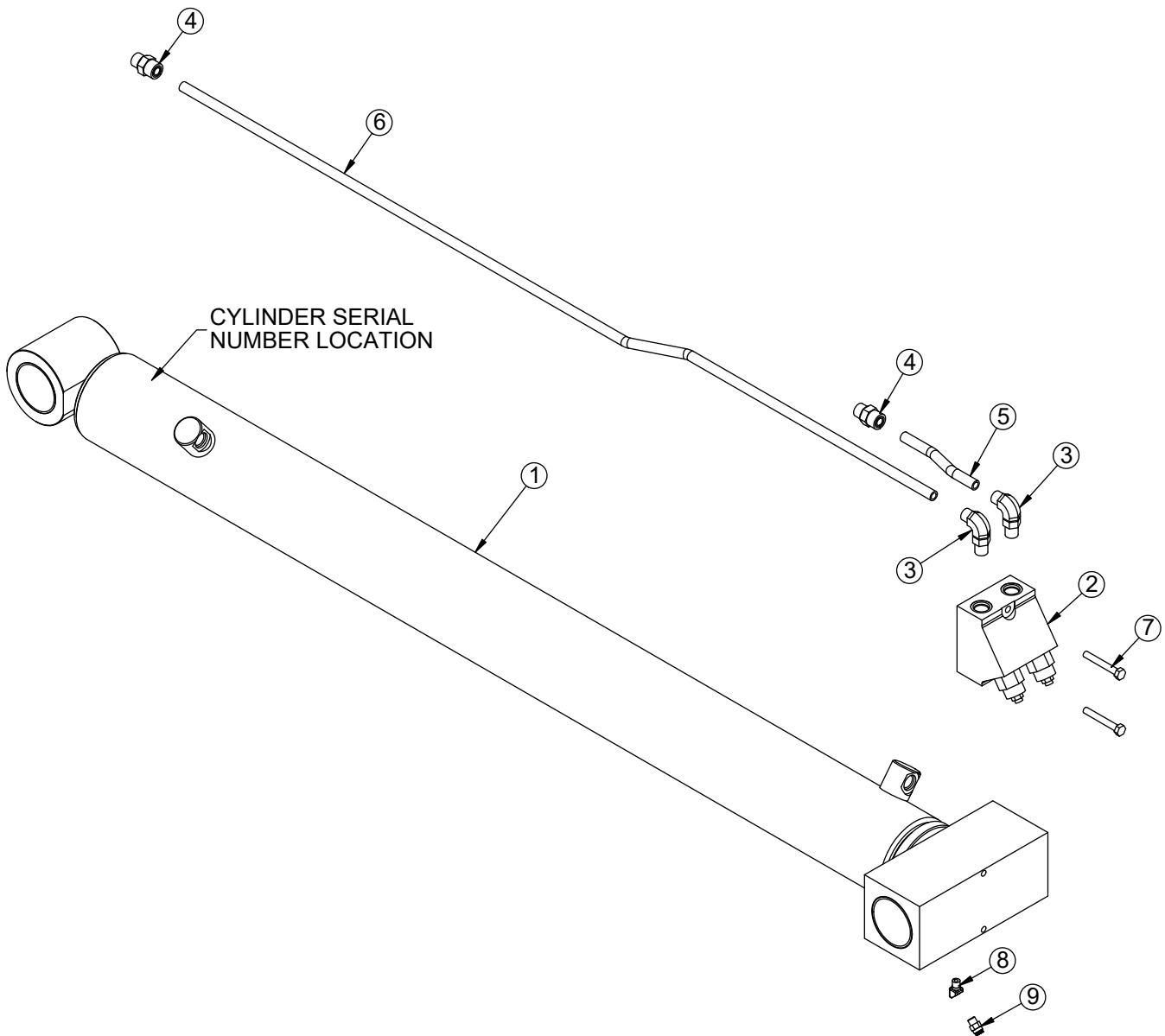
Extension Boom Assembly - PN 71261



Extension Boom Assembly - PN 71261 Parts List

PN 71261			
ITEM	PART	DESCRIPTION	QTY
1	71301	OUTER BOOM 17000 V2	1
2	54268	EXT BOOM 17000	1
3	53515	CYLINDER ASM EXT 17000	1
4	41058	WEAR PAD 1.00X4.00X6.00	4
5	54401	BUSHING COMPOSITE FIBER 2.50X2.50	2
6	41059	WEAR PAD 3.00X4.00X1.75 NYLATRON	4
7	41064	PLATE WEAR PAD COVER 23000	4
8	D0790	WASHER 0.50 SAE FLAT YELLOW GR8	16
9	10172	CAP SCR 0.50-13X1.00 HHGR8	8
10	C1592	ZERK 1/8 NPT STRAIGHT	1
11	4543	CAP SCR 0.75-10X2.00 HHGR8	16
12	C6219	WASHER 0.75 SAE FLAT YELLOW GR8	16
13	0857CR	PIN 2.50X12.38 SR/D&T ZC	1
14	8377	PIN CAP 0.56X3.50X0.19 YZ	6
15	54403	PIN 3.00X14.31 D&T SS	1
16	54374	BUSHING COMPOSITE FIBER 3.00X2.50	2
17	13315	PIN CAP 0.56X4.00X0.19 YZ	2
18	54404CR	PIN 2.50X11.44 D&T ZC	1
19	0635	BUSHING 40DXR32 GARLOCK	2
20	54405CR	PIN 2.50X6.50 D&T ZC	1
21	71305	CLAMP 3 HOSE 0.25 HYD 17000	2
22	0487	CAP SCR 0.31-18X1.75 HHGR5	4
23	0522	WASHER 0.31 LOCK	4
24	0343	WASHER 0.31 USS FLAT	4
25	8833	CAP SCR 0.50-13X2.00 HHGR8	4
26	10666	CAP SCR 0.50-13X1.25 HHGR8	4
REV. A			

Extension Cylinder Assembly - PN 53515



Extension Cylinder Assembly - PN 53515 Parts List

PN 53515			
ITEM	PART	DESCRIPTION	QTY
1	53504	CYLINDER 4.00X41.50	1
2	53516	MANIFOLD CBAL DOUBLE T2A SUN CBDD-LJN-XAJ	1
3	1556	FTG 8-8 MFS-MAORB 90	2
4	1554	FTG 8-8 MFS-MORB STRAIGHT	2
5	53517	TUBE ASM 0.50X5.81 YZ	1
6	54312	TUBE ASM 0.50X50.28 YZ	1
7	C0927	CAP SCR 0.31-18X2.25 HHGR5	2
8	104021	FTG 2-2 MP-FP 45 GREASE LINE	1
9	104019	FTG 4-2 PTC-MP STRAIGHT GREASE LINE	1
REV. B			

NOTES:

C-BALANCE VALVE: C1090

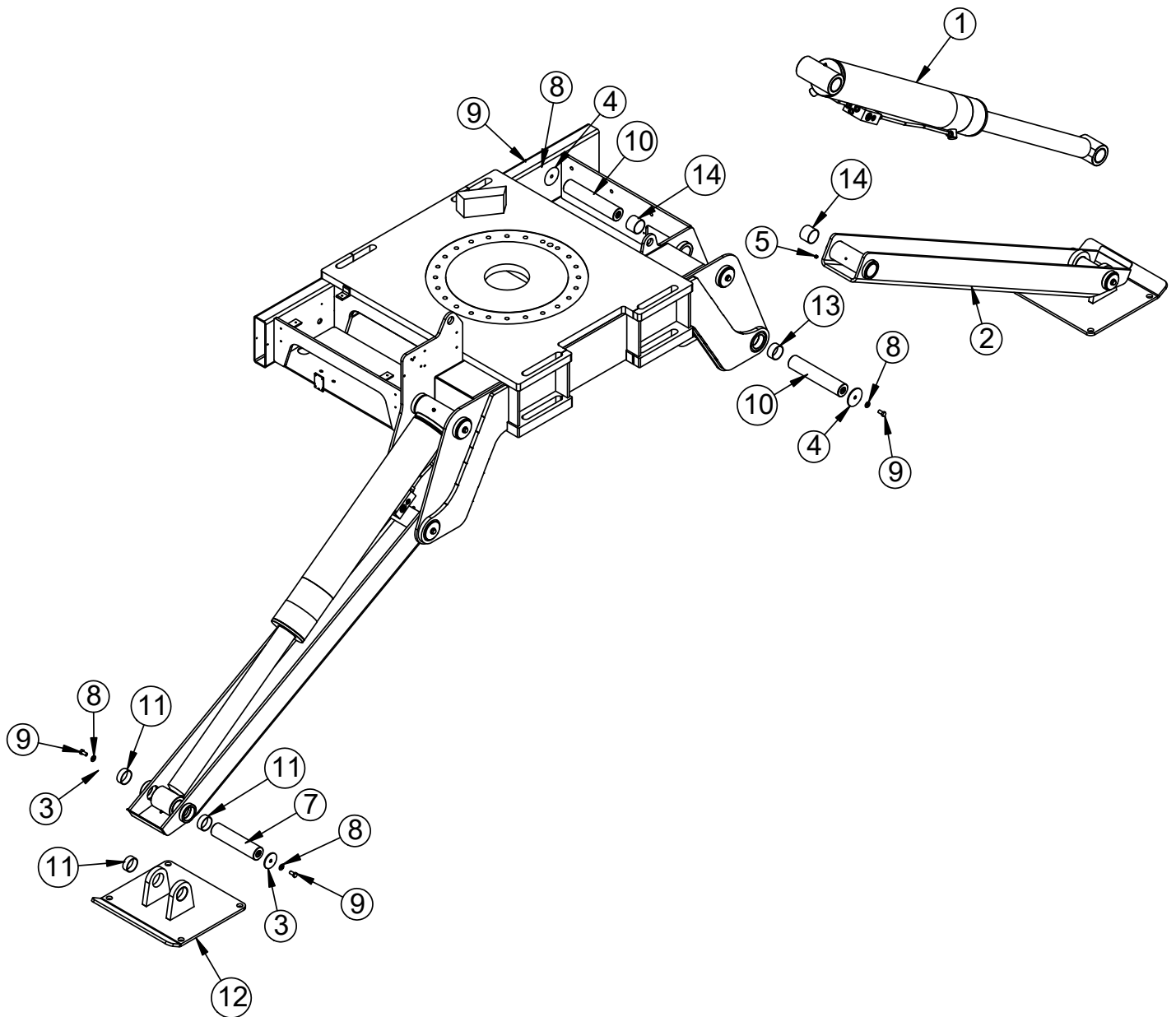
CYLINDER SEAL KIT: 57268

BUSHING PART NUMBER: 0635

BUSHINGS INCLUDED IN: 53504

GREASE FITTINGS SHOWN FOR REFERENCE.

Stabilizer Assembly - PN 54414

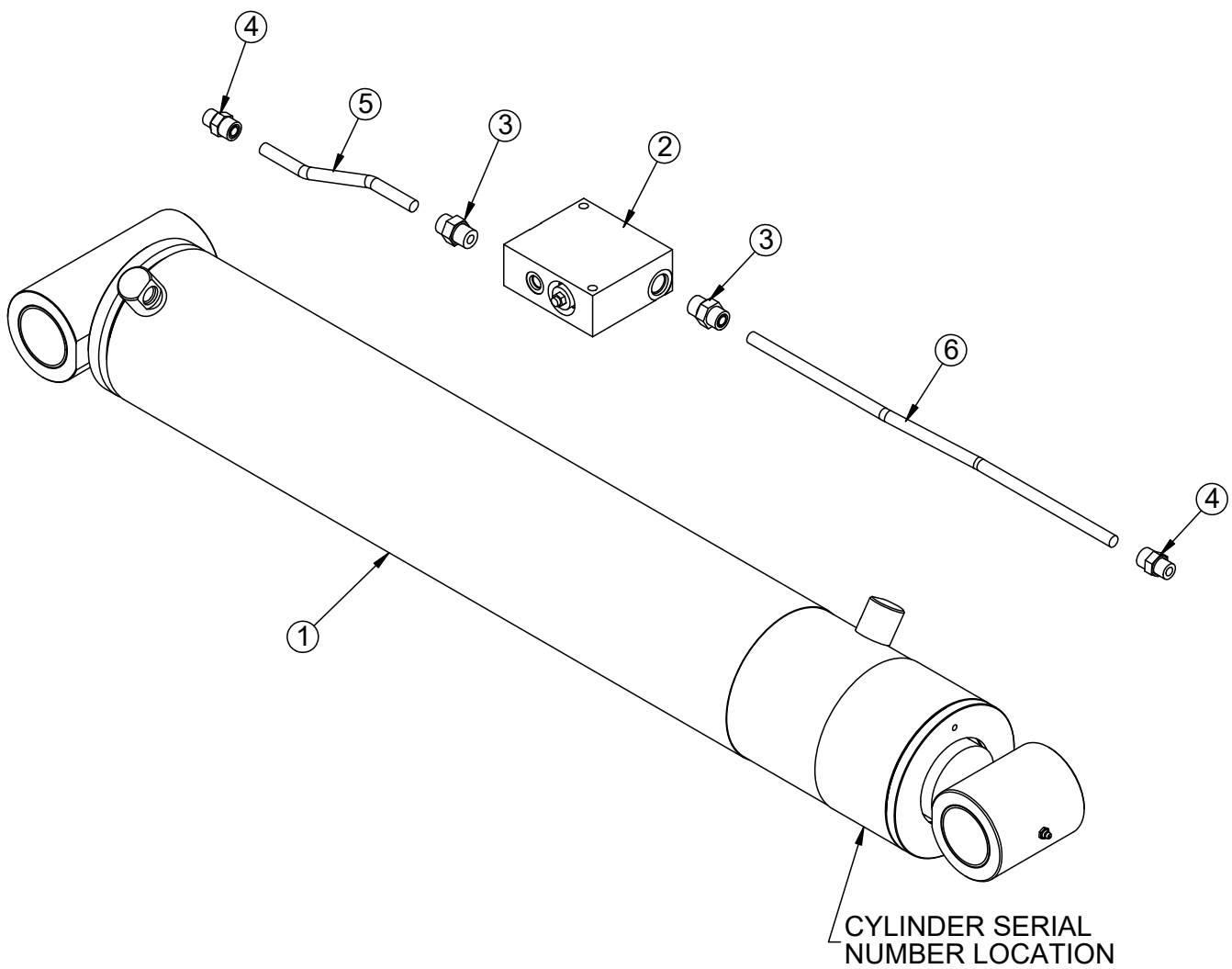


Stabilizer Assembly - PN 54414 Parts List

PN 54114			
ITEM	PART	DESCRIPTION	QTY
1	54415	CYLINDER ASM 6.00X34.09 17000 OUTRIGGER	2
2	54168	OUTRIGGER LEG WLDMT 17000 CRANE	2
3	5145	PIN CAP 0.56X3.00X0.19 YZ	4
4	8377	PIN CAP 0.56X3.50X0.19 YZ	8
5	C1592	ZERK 1/8 NPT STRAIGHT	2
7	54418CR	PIN 2.50X10.69 D&T ZC	2
8	D0790	WASHER 0.50 SAE FLAT YELLOW GR8	12
9	10172	CAP SCR 0.50-13X1.00 HHGR8	12
10	54419CR	PIN 2.50X12.56 D&T ZC	4
11	13343	BUSHING BPC40DXR16 2.50X1.00	8
12	55668	OUTRIGGER PAD 17000	2
13	25574	BUSHING BPC40DXR20 2.50X1.25	4
14	0635	BUSHING BPC40DXR32 2.50X2.00	8
REV. A			

NOTE:
BASE WELDMENT SHOWN AS REFERENCE.

Stabilizer Cylinder Assembly - PN 54415



Stabilizer Cylinder Assembly - PN 54415 Parts List

PN 54415			
ITEM	PART	DESCRIPTION	QTY
1	54166	CYLINDER 6.00X34.09 17000 OUTRIGGER	1
2	15995	MANIFOLD ASM DUAL T2A 5000PSI	1
3	C2252	FTG 8-10 MFS-MORB STRAIGHT	2
4	1554	FTG 8-8 MFS-MORB STRAIGHT	2
5	54416	TUBE ASM 0.50X7.56 17000 YZ	1
6	54417	TUBE ASM 0.50X19.56 17000 YZ	1
REV. INITIAL RELEASE			

NOTES:

C-BALANCE VALVE: C1090

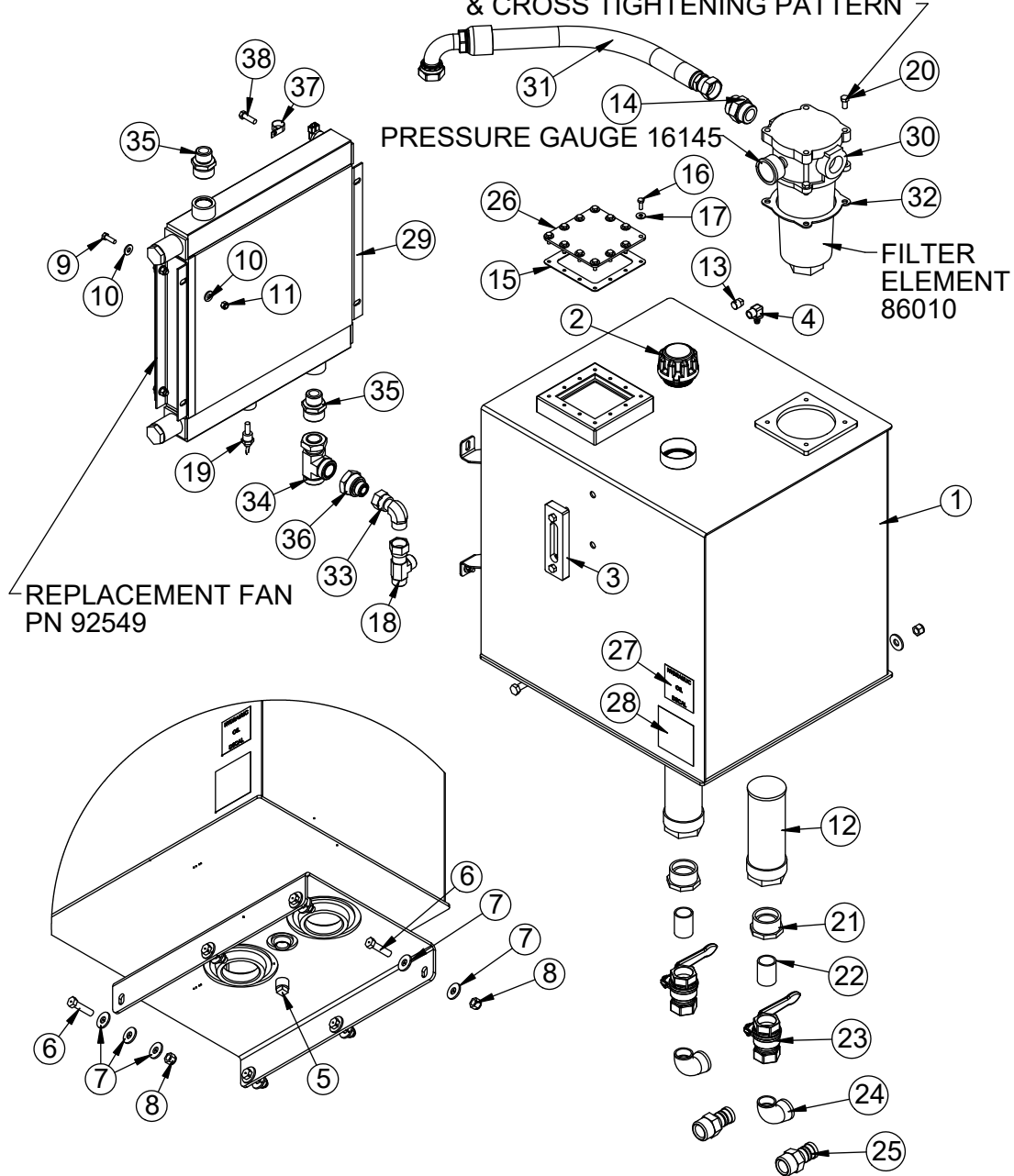
CYLINDER SEAL KIT: 57270

CYLINDER BUSHINGS: 0635

CYLINDER BUSHINGS INCLUDED IN: 54166.

Reservoir Assembly - PN 85936

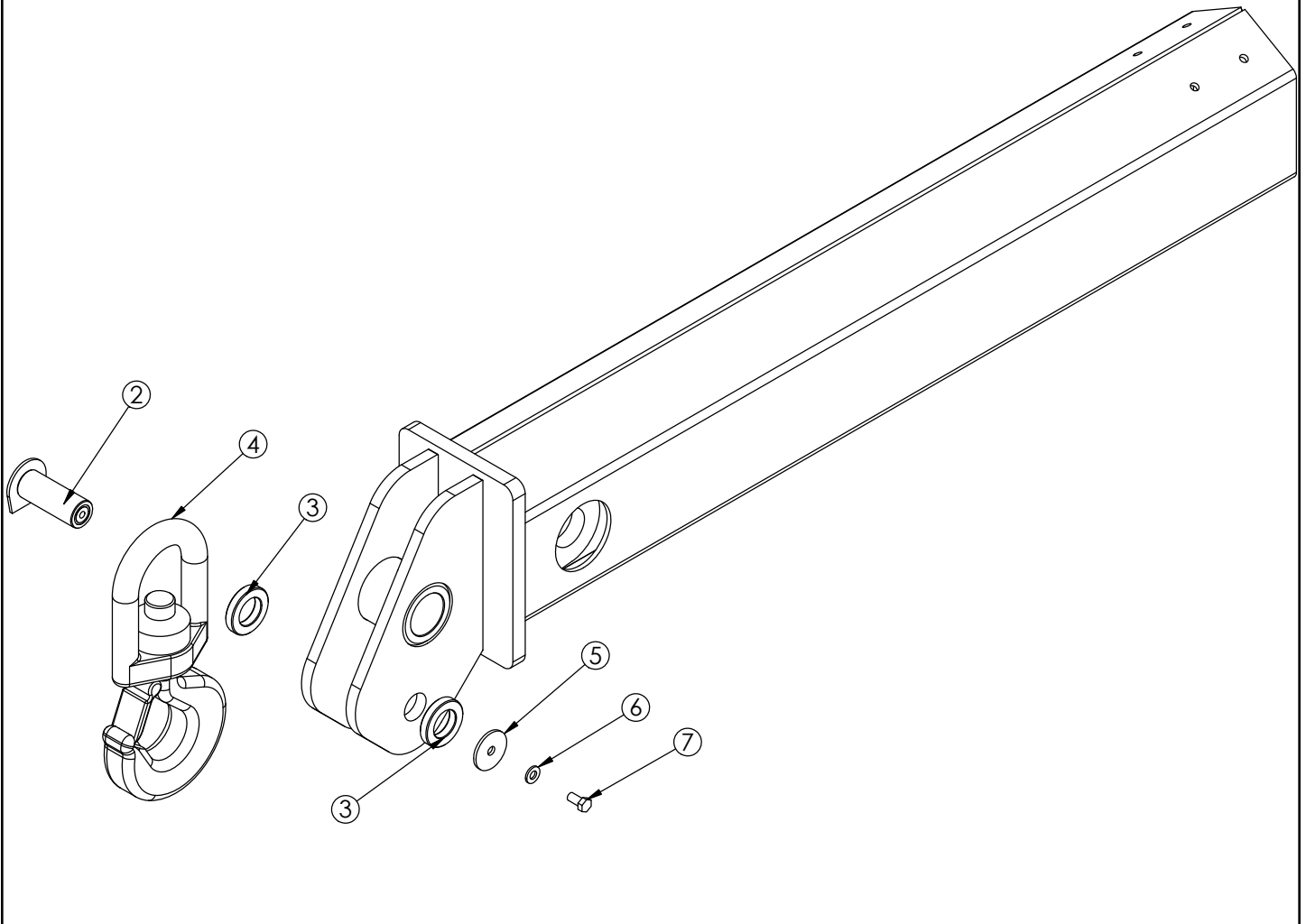
NOTE: USE PN 82433 ON THREADS
TORQUE TO 15 FT-LBS WITH MINIMUM
2 PASSES TO ACHIVE FINAL TORQUE
& CROSS TIGHTENING PATTERN



Reservoir Assembly - PN 85936 Parts List

PN 85936			
ITEM	PART	DESCRIPTION	QTY
1	85937	RSRVR 50GAL ORING V2 17000	1
2	81018	CAP FILL NO RELIEF ZINGA THREADED	1
3	15463	THERMO SIGHT GAUGE ZINGA SG-05-A-T-N	1
4	71411	FTG HOSE 6-6 PL-MP 90 BRASS	1
5	C2126	PLUG 0.75 NPT SQ HD MAGNETIC	1
6	0501	CAP SCR 0.50-13X2.00 HHGR5	6
7	0352	WASHER 0.50 USS FLAT	15
8	C6106	NUT 0.50-13 HHGR5 NYLOC	6
9	C0922	CAP SCR 0.31-18X1.00 HHGR5	4
10	0343	WASHER 0.31 USS FLAT	8
11	0342	NUT 0.31-18 HHGR5 NYLOC	4
12	C6327	FILTER STRAINER 35GAL TF-2030	2
13	C4841	PLUG 0.38 NPT SQ HD BLK	1
14	19242	FTG 20-20 MFS-MORB STRAIGHT	1
15	11149	GASKET ARCTIC FOX HEATER #A-611	1
16	0479	CAP SCR 0.25-20X0.75 HHGR5	12
17	340	WASHER 0.25 USS FLAT	12
18	D0525	FTG 12-12-12 MFS-FFSS-MFS RUN TEE	1
19	123756	SWITCH TEMP NC TT-F5B-170R-PD	1
20	0492	CAP SCR 0.38-16X0.75 HHGR5	4
21	C4907	BUSHING 2.00X1.25 BLK	2
22	C1057	FTG 20-20XCLOSE MP-MP NIPPLE STRAIGHT BLK	2
23	C5511	VALVE BALL 1.25	2
24	C4694	ST EL 1.25 90 DEG BLK	2
25	C2282	FTG 1.25 NPT TO 1.25 BARB	2
26	11442	PLATE COVER TANK HEATER FLANGE	1
27	13002	DECAL HYD OIL SPECIFICATION MOBIL	1
28	42971	DECAL OIL FILTER CHANGE	1
29	85790	COOLER OIL MAR-32	1
30	85928	FILTER TANK TOP 20 FORB	1
31	86364	HOSE 1.25(200PSI)-20FFSS SHORT-20FFSS 90 SHORT-20CL	1
32	58396	GASKET RG-11 TANK TOP FILTER	1
33	C4903	FTG 12-12 MFS-FFSS 90	1
34	64517	FTG 20-20-20 MFS-FFSS-MFS RUN TEE	1
35	19799	FTG 20-16 MFS-MORB STRAIGHT	2
36	73633	FTG 20-12 FFSS-MFS STRAIGHT	1
37	C5946	HOSE CLAMP #8 RUBBER COATED	2
38	0335	CAP SCR 0.38-16X1.25 HHGR5	2
REV. C			

Optional 15 Ton Hook Kit - PN 54768



PN 54768

ITEM	PART	DESCRIPTION	QTY
1	54268	EXT BOOM 17000	1
2	54765	COLLAR 1.78X3.00X.56 PC BLACK	2
3	54766CR	PIN TEAR DROP 1.75X4.44 ZC	1
4	41499	HOOK 15 TON SWIVEL CROSBY 1028654	1
5	9142	PIN CAP 0.56X2.50X0.19 YZ	1
6	D0790	WASHER 0.50 SAE FLAT YELLOW GR8	1
7	10172	CAP SCR 0.50-13X1.00 HHGR8	1

REV. C

Radio Transmitter - PN 89149/93084



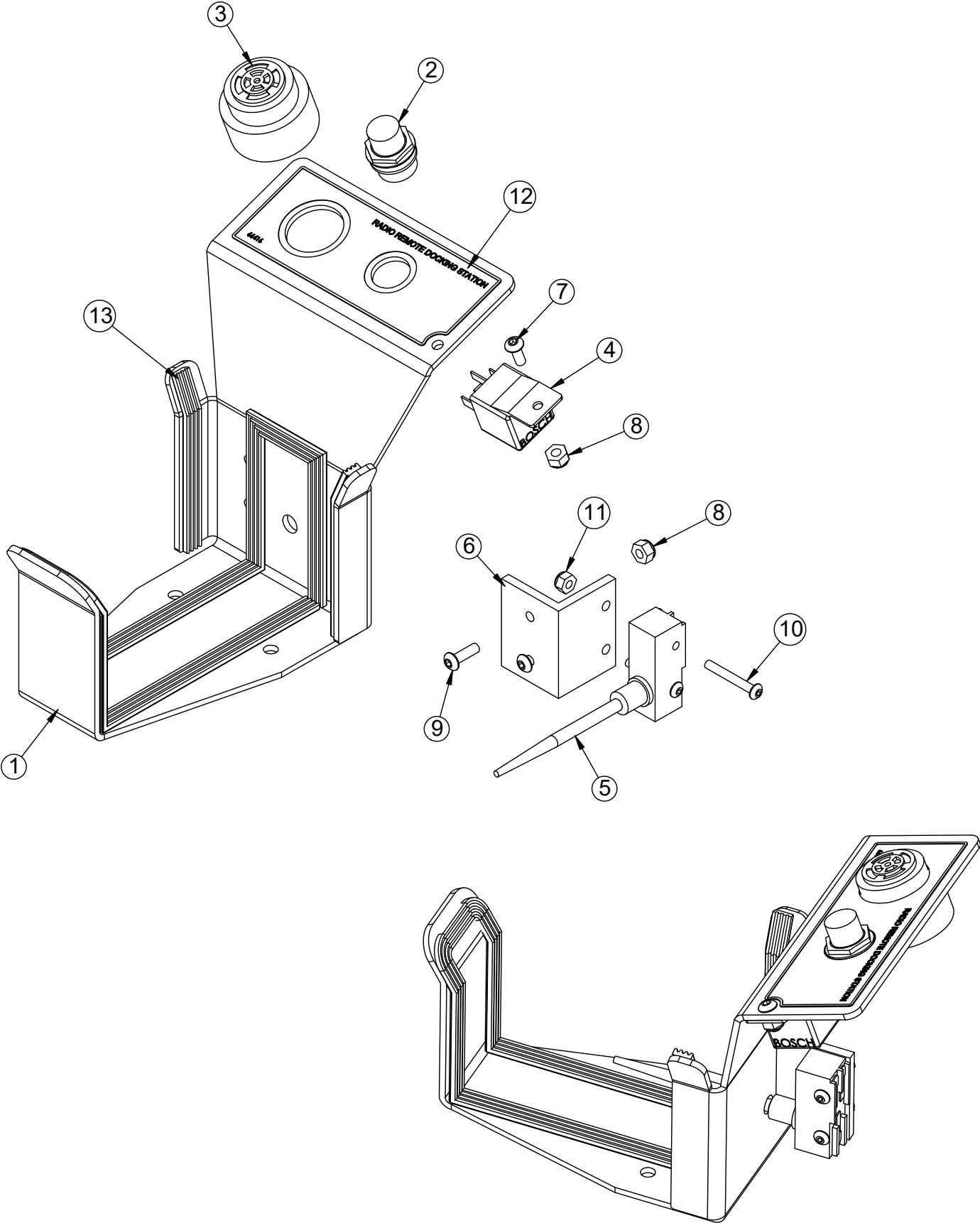
PN 89149 / 93084

ITEM	PART	DESCRIPTION	QTY
1	95026	2-WAY MOMENTARY TOGGLE SWITCH	1
2	95027	TOGGLE SWITCH RUBBER BOOT	3
3	95025	SWITCH PADDLE SCANRECO (LABEL KIT INCLUDED)	6
4*	89474	3-WAY MOMENTARY TOGGLE SWITCH	2
5	95030	E-STOP SWITCH	1
6	95028	PUSH BUTTON START SWITCH	1
7	95029	PUSH BUTTON SWITCH BOOT	1

* "OPTION" switch may or may not be active depending on factory settings; additional functionality dependent on user.

Transmitter Docking Station Asm (Opt.) - PN 97334

SCANRECO BELLY BOX G2B-MINI



Transmitter Docking Station (Opt.) - PN 97334 Parts List

PN 97334

ITEM	PART	DESCRIPTION	QTY
1	97470	BRKT RADIO STOW SCANRECO 89149/89150	1
2	26288	LIGHT INDICATOR RED FORCE PTO	1
3	26031	BACKUP ALARM PIEZO JAMECO 123537	1
4	C6072	RELAY BOSCH 20-30 AMP	1
5	66413	SWITCH SPRING ROD OMRON Z-15GNJ55	1
6	66411	ANGLE AL SWITCH MOUNT DOCK STATION HET NOVA	1
7	D1711	CAP SCR #10-24X0.50 BTNHD SS	1
8	C4956	NUT #10-24 HH NYLOC SS	3
9	59075	CAP SCR #10-24X0.63 BTNHD ZC	2
10	66412	SCREW #8-32X1.25 BTNHD SS	2
11	22186	NUT #8-32 HH NYLOC SS	2
12	66416	DECAL DOCKING STATION HET NOVA 41922	1
13	17162	WEATHERSTRIP RIBBED 0.38X0.13	3.5

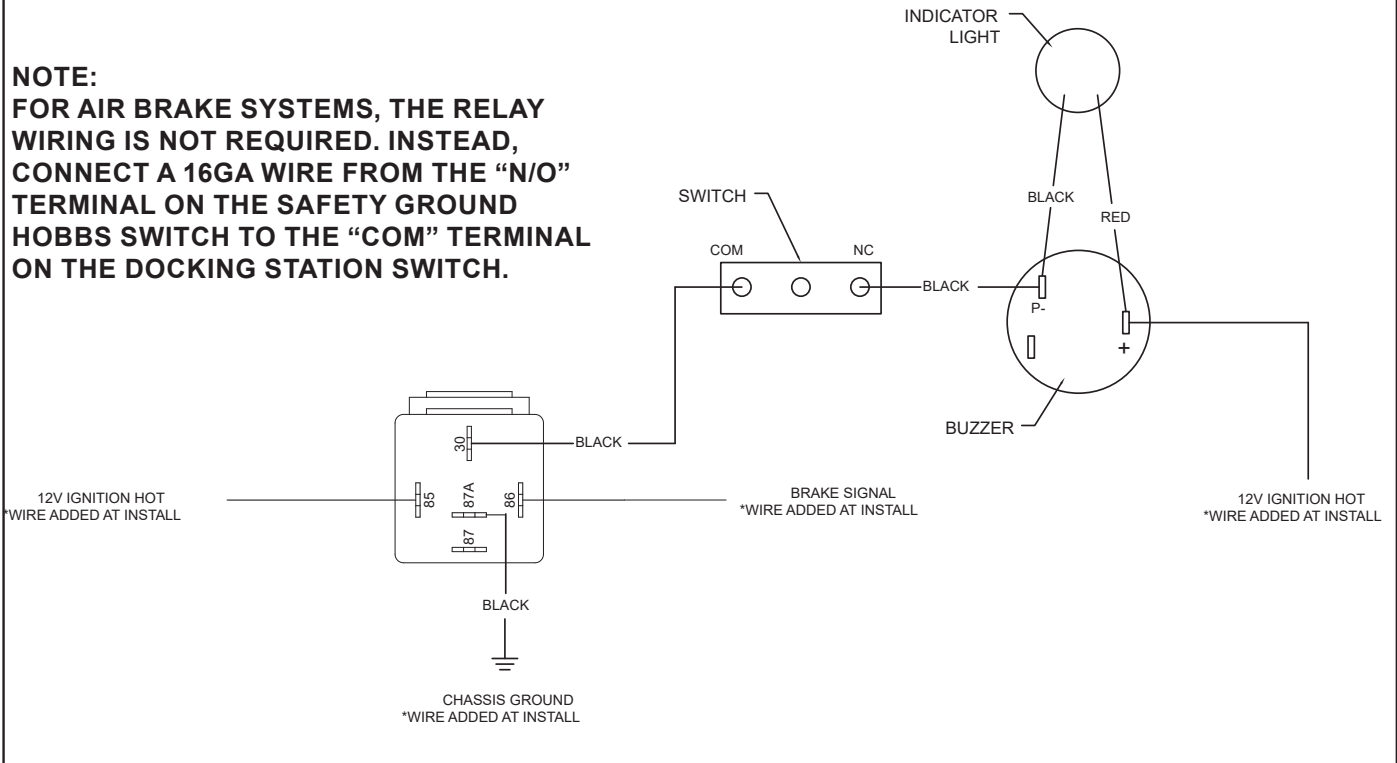
PARTS NOT SHOWN

PART	DESCRIPTION	QTY
65989	WIRING DIAGRAM DOCKING STATION 65984	1
C0072	TERML RING #10 16-14GA	6
C0080	TERML QC F 0.19 16-14GA 0.20 TAB FULLY INS	4
C2607	TERML QC PIGGYBK 0.25 16-14GA	1
C4689	WIRE 14GA (RM) RED SAE J-1128	1.5
C4691	WIRE 14GA (RM) BLACK SAE J-1128	3
C4860	DECAL BALLAST MSTR OPERATION	1

Wiring Diagram Docking Station - PN 65989

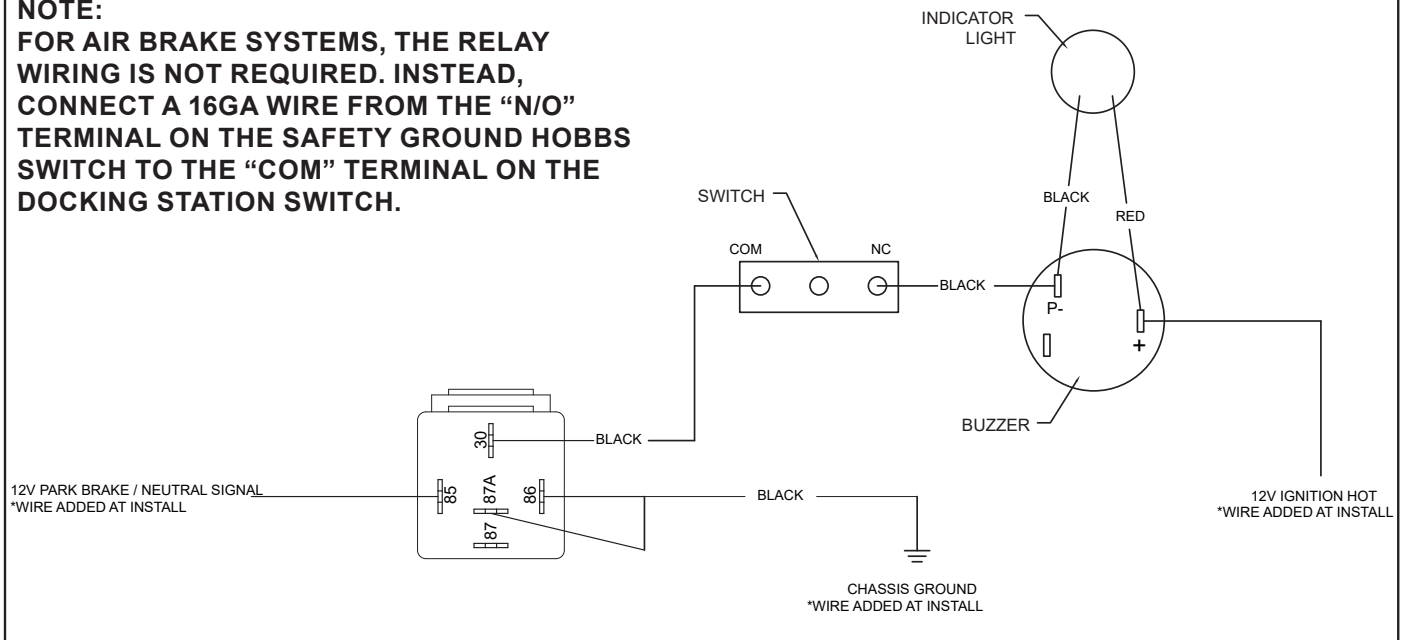
NEGATIVE BRAKE SIGNAL

NOTE:
FOR AIR BRAKE SYSTEMS, THE RELAY WIRING IS NOT REQUIRED. INSTEAD, CONNECT A 16GA WIRE FROM THE "N/O" TERMINAL ON THE SAFETY GROUND HOBBS SWITCH TO THE "COM" TERMINAL ON THE DOCKING STATION SWITCH.



POSITIVE BRAKE SIGNAL

NOTE:
FOR AIR BRAKE SYSTEMS, THE RELAY WIRING IS NOT REQUIRED. INSTEAD, CONNECT A 16GA WIRE FROM THE "N/O" TERMINAL ON THE SAFETY GROUND HOBBS SWITCH TO THE "COM" TERMINAL ON THE DOCKING STATION SWITCH.



This page left intentionally blank.



Subject to Change without Notification.
© 2023 Stellar Industries, Inc.