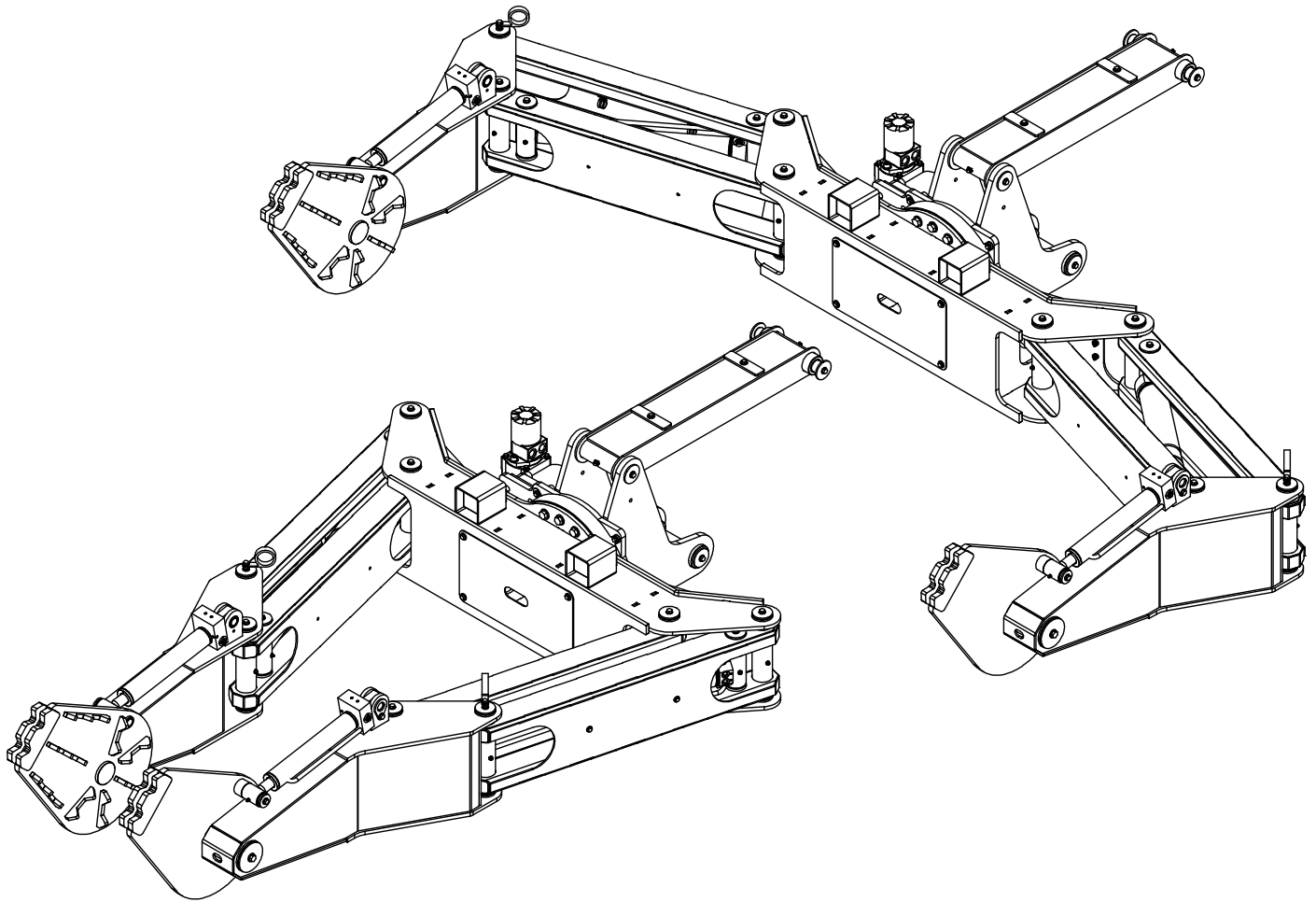




TireMan 4110 Owner's Manual

Installation • Assembly Drawings • Parts



**Notice: A copy of this manual must remain with the equipment at all times.
For a printable download copy, please visit: www.stellarindustries.com**

Stellar Industries, Inc.

190 State Street

PO Box 169

Garner, IA 50438

800-321-3741

Fax: 641-923-2811

www.stellarindustries.com

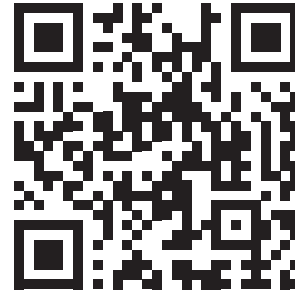
Subject to Change without Notification.
© 2024 Stellar Industries, Inc.

Rev 1
PN 131949

P65 Warning / Cold Weather Notice

WARNING

Operating, maintaining, and servicing a Stellar product may expose you to chemicals including, but not limited to, engine exhaust, carbon monoxide, phthalates, and lead. These chemicals are known to the State of California to cause cancer and birth defects (or other reproductive harm). To keep your exposure to a minimum, be sure to avoid breathing exhaust and service your Stellar product in a well-ventilated area while wearing gloves or washing your hands frequently. For more information, go to www.P65Warnings.ca.gov/passenger-vehicle.



www.p65/warning.ca.gov

NOTICE

Cold Weather Performance

Although clear data on cold weather performance from every steel manufacturer is not available for all types and thicknesses of steel, Stellar Industries is confident that the weldments on our products will operate to 100% of their intended purpose to temperatures down to -40° F / C.

It is recommended if Stellar manufactured equipment needs to be used in temperatures below -40° F / C, the operator should pull the unit into a climate-controlled area and allow the weldments to warm up to and then maintain a temperature above this level.

Table of Contents

Introduction.....	iv
Chapter 1 - Specifications	1
Model TM4110 Specifications.....	2
TM4110 Dimensional Layout.....	3
TM4110 Dimensional Layout (Continued)	4
Chapter 2 - Installation.....	5
General Installation.....	6
Installer Notice.....	6
Torque Data Chart	7
Hydraulic Installation	8
Hydraulic Pressure Settings	9
Face Seal/O-Ring Size Chart	9
Hydraulic Kit w/Fixed Pads - PN 99146.....	10
Hydraulic Kit w/Fixed Pads - PN 99146 Parts List.....	11
Hydraulic Kit w/Rotating Pads - PN 99136	12
Hydraulic Kit w/Rotating Pads - PN 99136 Parts List.....	13
Decal Placement - PN 35432	14
Chapter 3 - Assembly Drawings.....	15
TM4110 Standard Assembly - PN 135084	16
TM4110 Standard Assembly - PN 135084 Parts List	17
TM4110 Standard Assembly - PN 130915	18
TM4110 Standard Assembly - PN 130915 Parts List	19
TM4110 Standard Assembly - PN 130915 Parts List	20

Introduction

A copy of this manual is provided with every tire manipulator and can be found in the hard plastic manual case that is installed on the chassis. A copy of this manual shall remain with the tire manipulator at all times.

Throughout the manual, three signal words will be used to bring attention to important items:

NOTICE

A NOTICE signal word indicates a practice not related to physical injury.

⚠ WARNING

A WARNING signal word indicates a hazardous situation which, if not avoided, could result in death or serious injury.

⚠ DANGER

A DANGER signal word indicates a hazardous situation which, if not avoided, will result in death or serious injury.

Information contained within this manual does not cover operation, maintenance, or troubleshooting. Please refer to the Large OTR Crane Manual for details on these items.

This manual is not binding. Stellar Industries, Inc. reserves the right to change, at any time, any or all of the items, components, and parts deemed necessary for product improvement or commercial/production purposes. This right is kept with no requirement or obligation for immediate mandatory updating of this manual.

If more information is required or technical assistance is needed, or if you feel that any part of this manual is unclear or incorrect, please contact the Stellar Customer Service Department by phone at 800-321-3741 or email at service@stellarindustries.com.

**For Technical Questions, Information, Parts, or Warranty, Call Toll-Free at
800-321-3741**

Hours: Monday - Friday, 8:00 a.m. - 5:00 p.m. CST

Or email at the following addresses:

Technical Questions, and Information

service@stellarindustries.com

Order Parts

parts@stellarindustries.com

Warranty Information

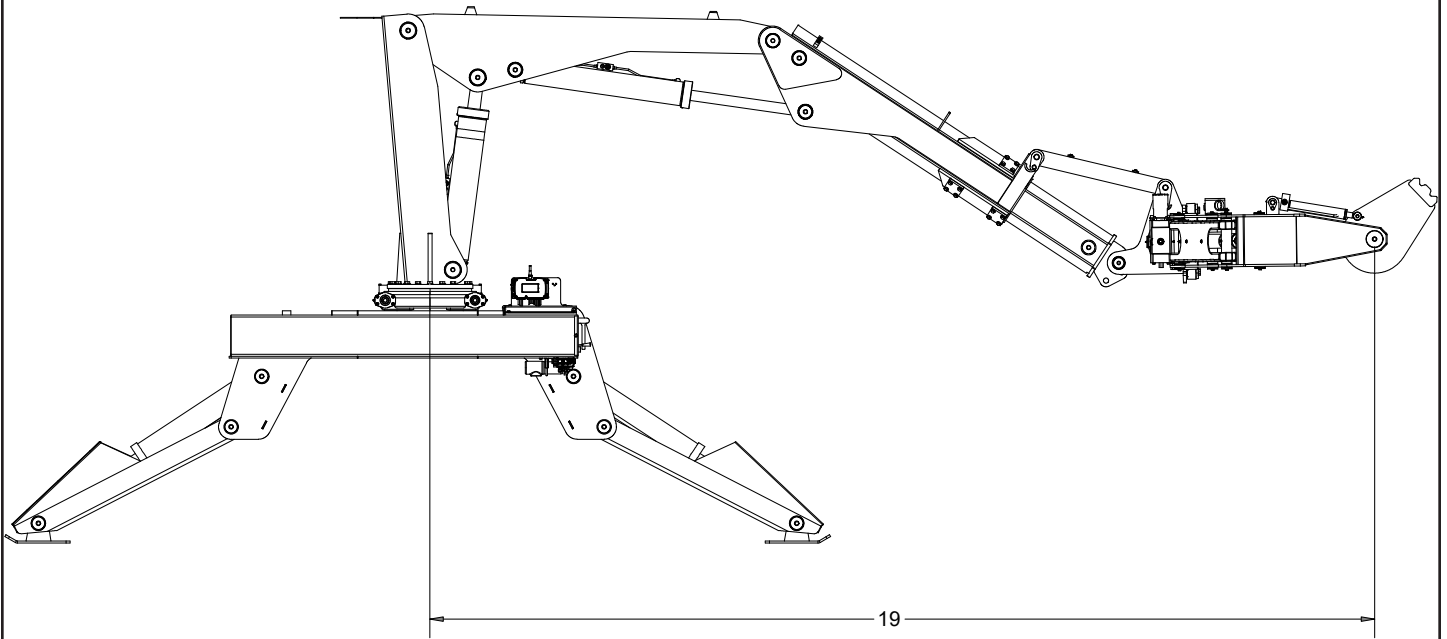
warranty@stellarindustries.com

Chapter 1 - Specifications

CHAPTER CONTENTS

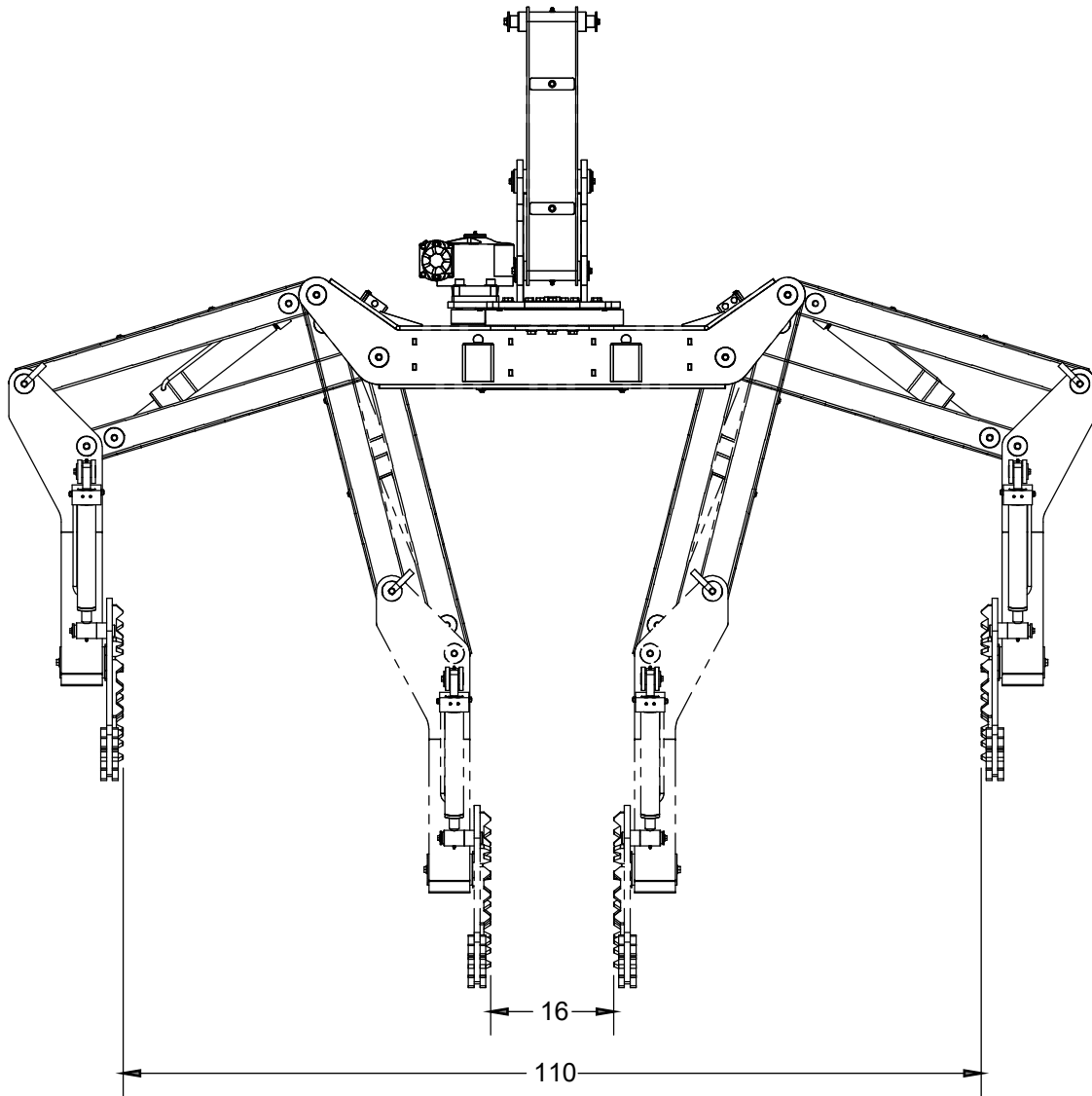
Model TM4110 Specifications	2
TM4110 Dimensional Layout.....	3
TM4110 Dimensional Layout (Continued).....	4

Model TM4110 Specifications

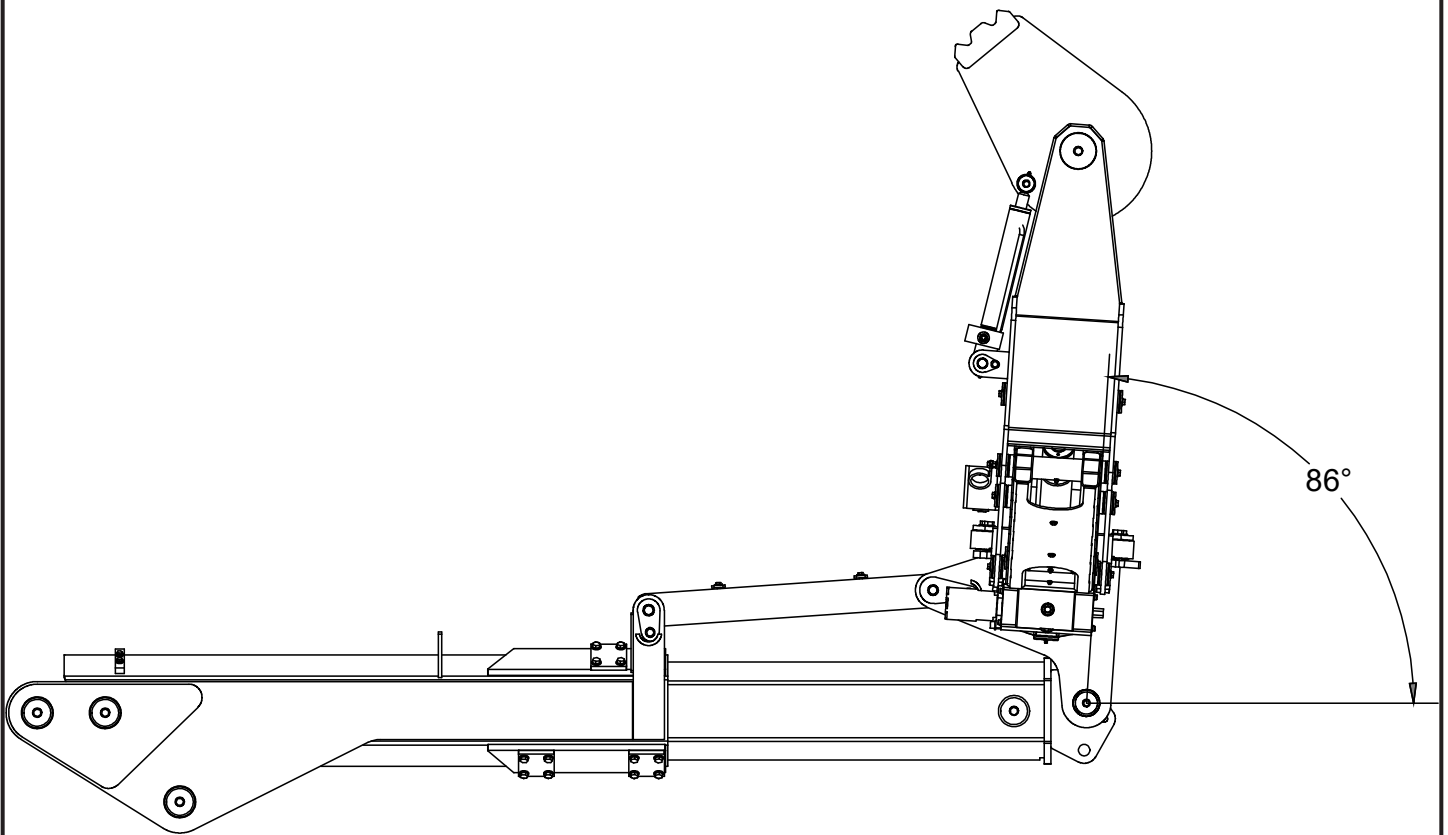
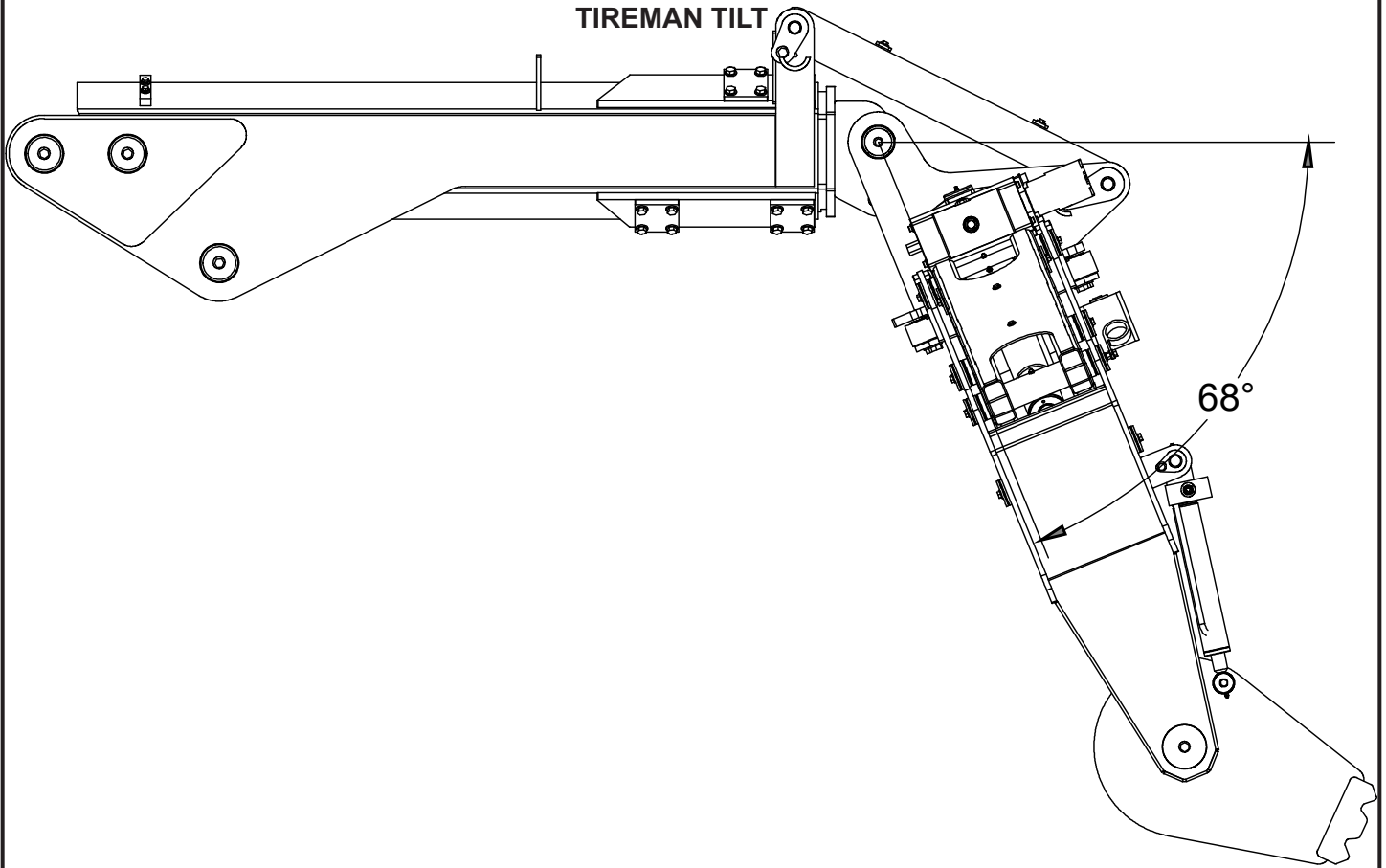


Capacity:	4,600 lbs @19 ft (2,086 kg @ 5.79m)
Clamping Span:	16" to 110" (40 cm to 280 cm)
Clamp Cylinders:	3.00" (7.62 cm) bore with integral pilot operated counterbalance valves
Tilt Cylinder:	Provided by crane extension boom
Body Rotation:	300° power
Rotation System:	Rotation bearing and worm-driven gear box
Clamping Pad Rotation:	Optional: 90° Rotating Pads
TireMan Tilt:	+86° to -68°
Hydraulic Controls:	Incorporated with the crane controls
Approximate Shipping Weight:	1,670 lb (757 kg) Standard 1,890 lb (857 kg) With 90 deg Rotating Pads

TM4110 Dimensional Layout



TM4110 Dimensional Layout (Continued)



Chapter 2 - Installation

CHAPTER CONTENTS

General Installation	6
Installer Notice.....	6
Torque Data Chart	7
Hydraulic Installation	8
Hydraulic Pressure Settings.....	9
Face Seal/O-Ring Size Chart.....	9
Hydraulic Kit w/Fixed Pads - PN 99146	10
Hydraulic Kit w/Fixed Pads - PN 99146 Parts List	11
Hydraulic Kit w/Rotating Pads - PN 99136.....	12
Hydraulic Kit w/Rotating Pads - PN 99136 Parts List.....	13
Decal Placement - PN 35432.....	14

General Installation

This chapter is designed to serve as a general guide for the installation of a Stellar TM4110 on a Stellar Service Crane. Each installation is considered unique so certain portions of this chapter may or may not apply to your direct application. If a question should arise during the installation process, please contact Stellar Customer Service at (800) 321 3741.

This crane is designed for use with a Stellar Service Crane installed on a vehicle that meets the minimum chassis requirements of the crane. It is the installer's responsibility to assure that the unit is mounted on a platform that will support the maximum crane rating of this crane.

⚠ WARNING Do not install this crane/manipulator on a body not capable of handling the loads imposed on it. Failure to do so may result in serious injury or death.

Installer Notice

According to Federal Law (49 cfr part 571), each final-stage manufacturer shall complete the vehicle in such a manner that it conforms to the standards in effect on the date of manufacture of the incomplete vehicle, the date of final completion, or a date between those two dates. This requirement shall, however, be superseded by any conflicting provisions of a standard that applies by its terms to vehicles manufactured in two or more stages.

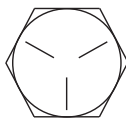
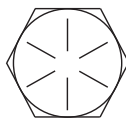
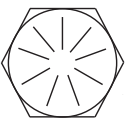
Therefore, the installer of Stellar® Cranes and Bodies is considered one of the manufacturers of the vehicle. As such a manufacturer, the installer is responsible for compliance with all applicable federal and state regulations. They are required to certify that the vehicle is in compliance with the Federal Motor Vehicle Safety Standards and other regulations issued under the National Traffic and Motor Vehicle Safety Act.

Please reference the Code of Federal Regulations, title 49 - Transportation, Volume 5 (400-999), for further information, or visit <http://www.gpoaccess.gov/nara/index.html> for the full text of Code of Federal Regulations.

Torque Data Chart

When using the torque data in the chart, the following rules should be observed:

- Bolt manufacturer's particular specifications should be consulted when provided.
- Flat washers of equal strength must be used.
- All torque measurements are given in foot-pounds. To convert to inch-pounds, multiply by 12.
- Torque values specified are for bolts with residual oils or no special lubricants applied.
- Torque values for socket-head capscrews are the same as for Grade 8 capscrews.

		GRADE 5		GRADE 8		GRADE 9
						
Size (DIA-TPI)	Bolt DIA (Inches)	Plain (Ft-Lb)	Plated (Ft-Lb)	Plain (Ft-Lb)	Plated (Ft-Lb)	Plated (Ft-Lb)
5/16-18	0.3125	17	13	25	18	22
3/8-16	0.3750	31	23	44	33	39
7/16-14	0.4375	49	37	70	52	63
1/2-13	0.5000	75	57	105	80	96
9/16-12	0.5625	110	82	155	115	139
5/8-11	0.6250	150	115	220	160	192
3/4-10	0.7500	265	200	375	280	340
7/8-9	0.8750	395	295	605	455	549
1-8	1.000	590	445	910	680	823
1 1/8-7	1.1250	795	595	1290	965	1167
1 1/4-7	1.2500	1120	840	1815	1360	1646
1 3/8-6	1.3750	1470	1100	2380	1780	2158
1 1/2-6	1.500	1950	1460	3160	2370	2865

- **NOTICE** Do not use these values if a different torque value or tightening procedure is given for a specific application. Torque values listed are for general use only. Check tightness of fasteners periodically.
- Shear bolts are designed to fail under predetermined loads. Always replace shear bolts with identical grade.
- Fasteners should be replaced with the same or higher grade. If higher grade fasteners are used, these should only be tightened to the strength of the original.
- Tighten plastic insert or crimped steel-type lock nuts to approximately 110 percent of the dry torque values shown in the chart below, applied to the nut, not to the bolt head. Tighten toothed or serrated-type lock nuts to the full torque value. *Note: "Lubricated" means coated with a lubricant such as engine oil, or fasteners with phosphate and oil coatings. "Dry" means plain or zinc plated without lubrication. Tighten lubricated bolts to approximately 80% of dry bolts.*

Hydraulic Installation

Never modify or alter any of the equipment, whether mechanical, electrical, or hydraulic, without Stellar Industries' approval.

⚠ WARNING Do not touch or grab any hoses that could be under pressure. Release system pressure before attempting to make adjustments or repairs.

Do not attempt service or repair when PTO is engaged.

Disassemble and assemble hydraulic components on a clean surface.

Clean all metal parts in a nonflammable cleaning fluid. Then lubricate all components to aid in assembly.

⚠ WARNING Hydraulic fluid expands when heated. This raises the pressure in an unventilated tank. Release the tank pressure before removing the cap completely. Failure to do so may cause the oil to shoot out of the tank very rapidly and cause severe burns.

⚠ WARNING Do not rely on the hydraulic fluid to support the boom or crane. If hydraulic fluid escapes, the boom or crane can fall immediately. Make sure the ground or blocking is supporting the boom before performing any maintenance or repair.

NOTICE Contaminants in a hydraulic system affect operation and will result in serious damage to the system components. Dirty hydraulic systems are a major cause of component failures.

If evidence of foreign particles is found in the hydraulic system, flush the system.

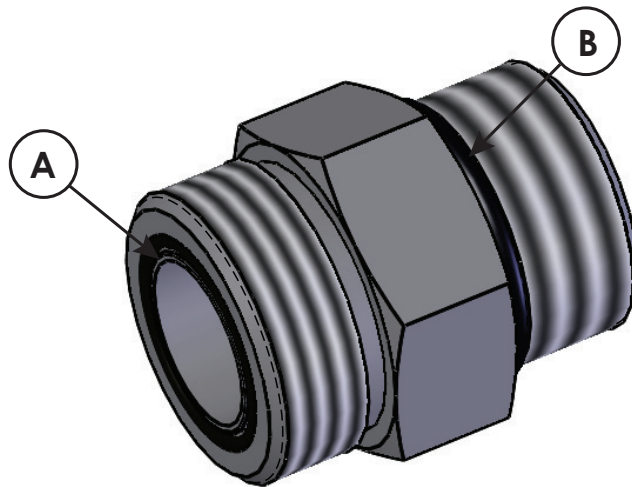
When installing metal hydraulic tubes, tighten all fittings finger tight. Then, in order, tighten the fittings at the rigid end, the adjustable end, and the mounting brackets. After tubes are mounted, install the hoses. Connect both ends of the hose with all fittings finger tight. Position the hose so it does not rub the machine or another hose and has a minimum of bending and twisting. Tighten fittings in both couplings.

Due to manufacturing methods, there is a natural curvature to a hydraulic hose. The hose should be installed so any bend is with this curvature.

Hydraulic Pressure Settings

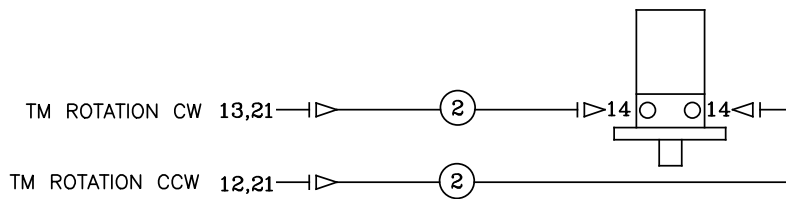
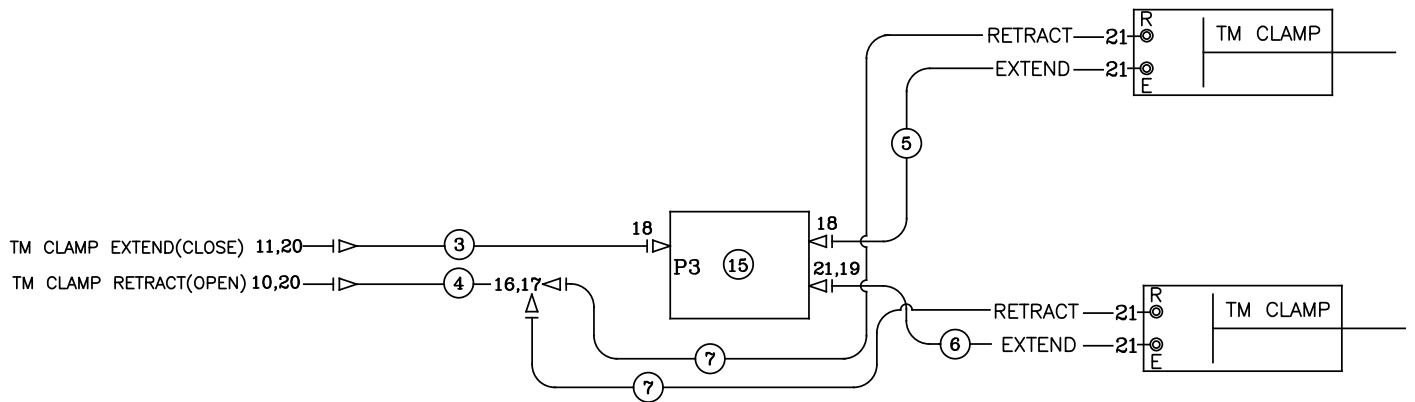
Main Relief 3200 psi			
		Pressure (psi)	
Function	Flow (gpm)	Extend	Retract
<i>Inner</i>	10.6	3000	3000
<i>Outer</i>	10.6	3000	3000
<i>Extension</i>	6.6	3000	3000
<i>Rotation</i>	6.6	1700	1700
<i>TM Rot</i>	6.6	2500	2500
<i>TM Pad Rot</i>	6.6	3000	3000
<i>TM Clamp</i>	6.6	3000	3000

Face Seal/O-Ring Size Chart



Hose Size	Fitting Size	Face Seal (A) Stellar® PN	O-ring Boss (B) Stellar® PN
1/4"	#4	C2027	D1245
3/8"	#6	C2028	D1246
1/2"	#8	C2029	D1247
5/8"	#10	32223	D1248
3/4"	#12	D1244	D1249
1"	#16		D1250

Hydraulic Kit w/Fixed Pads - PN 99146

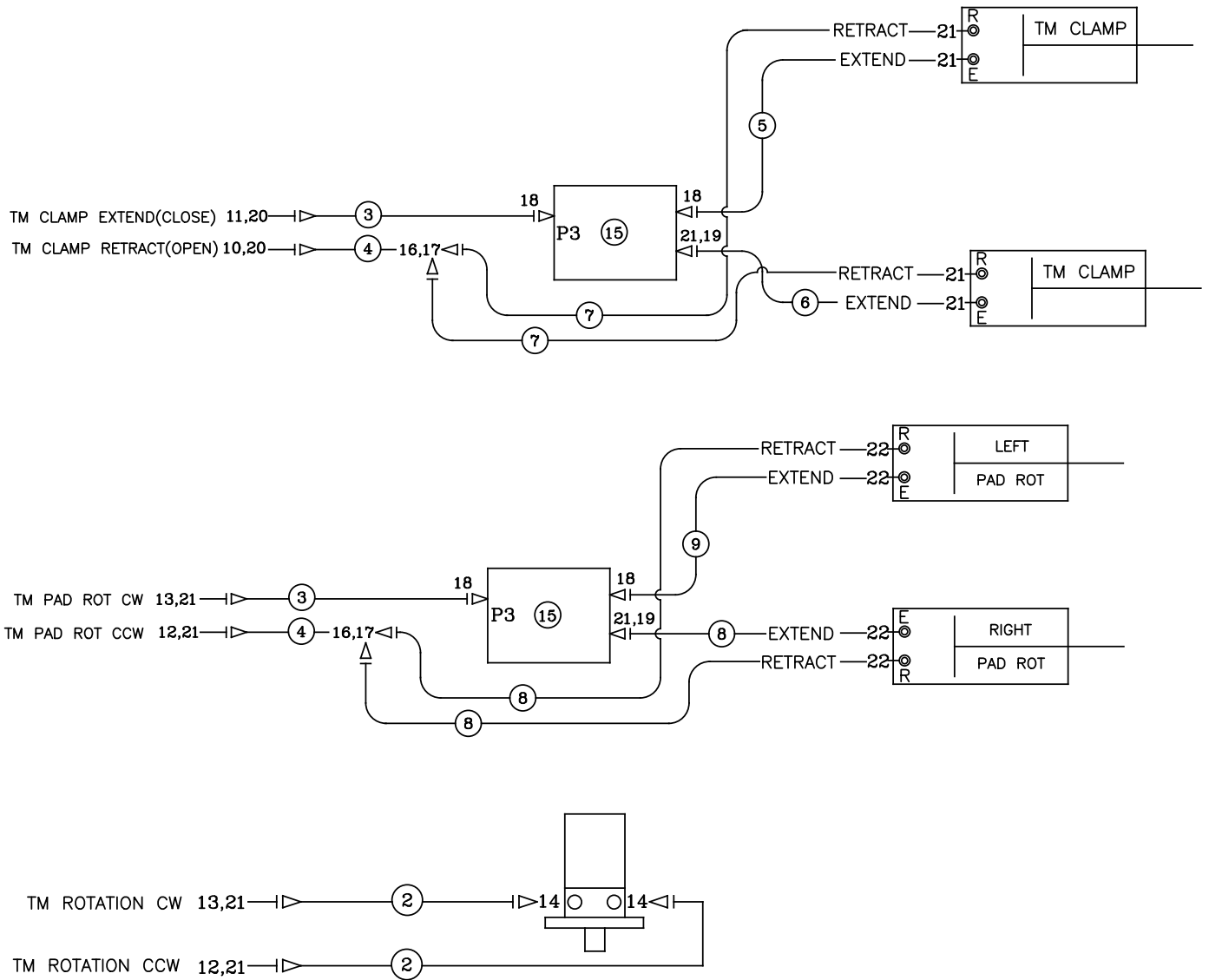


Hydraulic Kit w/Fixed Pads - PN 99146 Parts List

PN 99146			
ITEM	PART	DESCRIPTION	QTY
01	99147	HOSE KIT, TM6116V2 (INCL: 2-7)	1
02	55891	HOSE-HYD 0.25 X 77	2REF
03	79571	HOSE-HYD 0.25 X 113	1REF
04	79572	HOSE-HYD 0.25 X 85	1REF
05	99138	HOSE-HYD 0.25 X 33	1REF
06	99139	HOSE-HYD 0.25 X 63	1REF
07	99140	HOSE-HYD 0.25 X 38	2REF
08			
09			
10	13556	QUICK COUPLER 2FFN38-12SAE-F	1
11	13557	QUICK COUPLER 2FFN38-12SAE-M	1
12	13554	QUICK COUPLER 2FFI14-38SAE-F	1
13	13555	QUICK COUPLER 2FFI14-38SAE-M	1
14	C1855	FTG 6-10 MFS-MORB STRAIGHT	2
15	35111	VALVE COMB DIV FD50-44-6T-N-44	1
16	12171	FTG 6-6 MFS-MFS SWIVEL STRAIGHT	1
17	D0107	FTG 6-6-6 MFS-MFS-FFSS BRANCH TEE	1
18	C0338	FTG 6-6 MFS-MAORB 90	2
19	C2248	FTG 6-6 MFS-FFSS 90	1
20	C1854	FTG 6-8 MFS-MORB STRAIGHT	2
21	0279	FTG 6-6 MFS-MORB STRAIGHT	7
22	53479	LOOM 1.00 SPIRAL WRAP POLYETHYLENE	4
REV. A			

NOTE:
USE SPIRAL HOSE WRAP (53479) OVER HOSES THRU BODY ROTATION AREA

Hydraulic Kit w/Rotating Pads - PN 99136

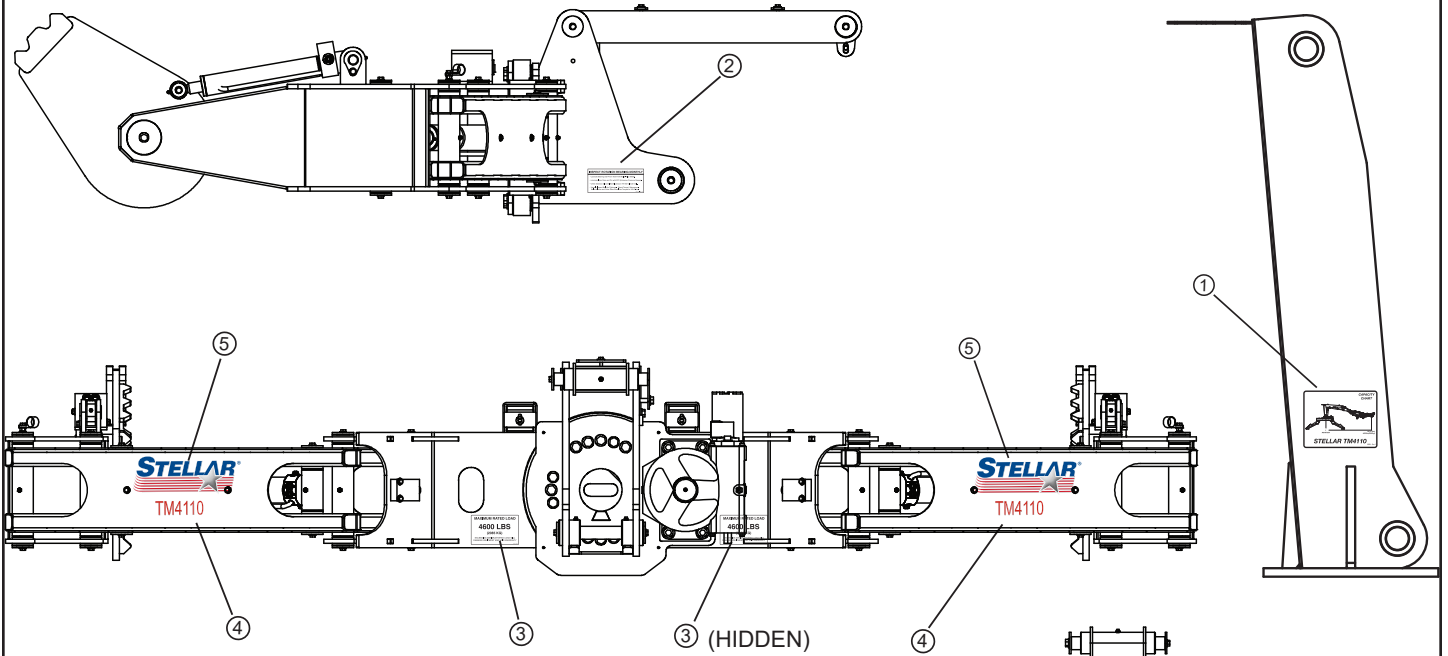


Hydraulic Kit w/Rotating Pads - PN 99136 Parts List

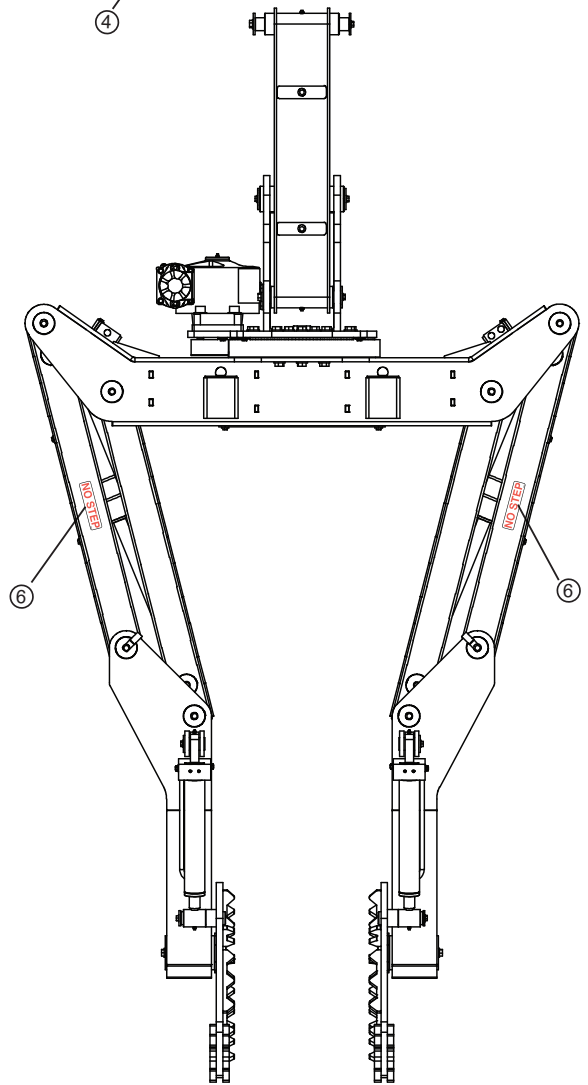
PN 99146			
ITEM	PART	DESCRIPTION	QTY
01	99137	HOSE KIT, TM6116 V2 RP (INCL:2-9)	1
02	55891	HOSE-HYD 0.25 X 77	2REF
03	79571	HOSE-HYD 0.25 X 113	2REF
04	79572	HOSE-HYD 0.25 X 85	1REF
05	99138	HOSE-HYD 0.25 X 33	1REF
06	99139	HOSE-HYD 0.25 X 63	2REF
07	99140	HOSE-HYD 0.25 X 38	2REF
08	99141	HOSE-HYD 0.25 X 96	3REF
09	99142	HOSE-HYD 0.25 X 122	1REF
10	13556	QUICK COUPLER 2FFN38-12SAE-F	1
11	13557	QUICK COUPLER 2FFN38-12SAE-M	1
12	13554	QUICK COUPLER 2FFI14-38SAE-F	2
13	13555	QUICK COUPLER 2FFI14-38SAE-M	2
14	C1855	FTG 6-10 MFS-MORB STRAIGHT	2
15	35111	VALVE COMB DIV FD50-44-6T-N-44	2
16	12171	FTG 6-6 MFS-MFS SWIVEL STRAIGHT	2
17	D0107	FTG 6-6-6 MFS-MFS-FFSS BRANCH TEE	2
18	C0338	FTG 6-6 MFS-MAORB 90	4
19	C2248	FTG 6-6 MFS-FFSS 90	2
20	C1854	FTG 6-8 MFS-MORB STRAIGHT	2
21	0279	FTG 6-6 MFS-MORB STRAIGHT	10
22	C4922	FTG 4-6 MFS-MORB STRAIGHT	4
23	53479	LOOM 1.00 SPIRAL WRAP POLYETHYLENE	4
REV. A			

NOTE:
USE SPIRAL HOSE WRAP (53479) OVER HOSES THRU BODY ROTATION AREA

Decal Placement - PN 35432



Last Revision
 Rev Level: D
 Date: 10/20/23
 By: MEL
 Change: new manipulator design,
 resized 35114



PN 35432

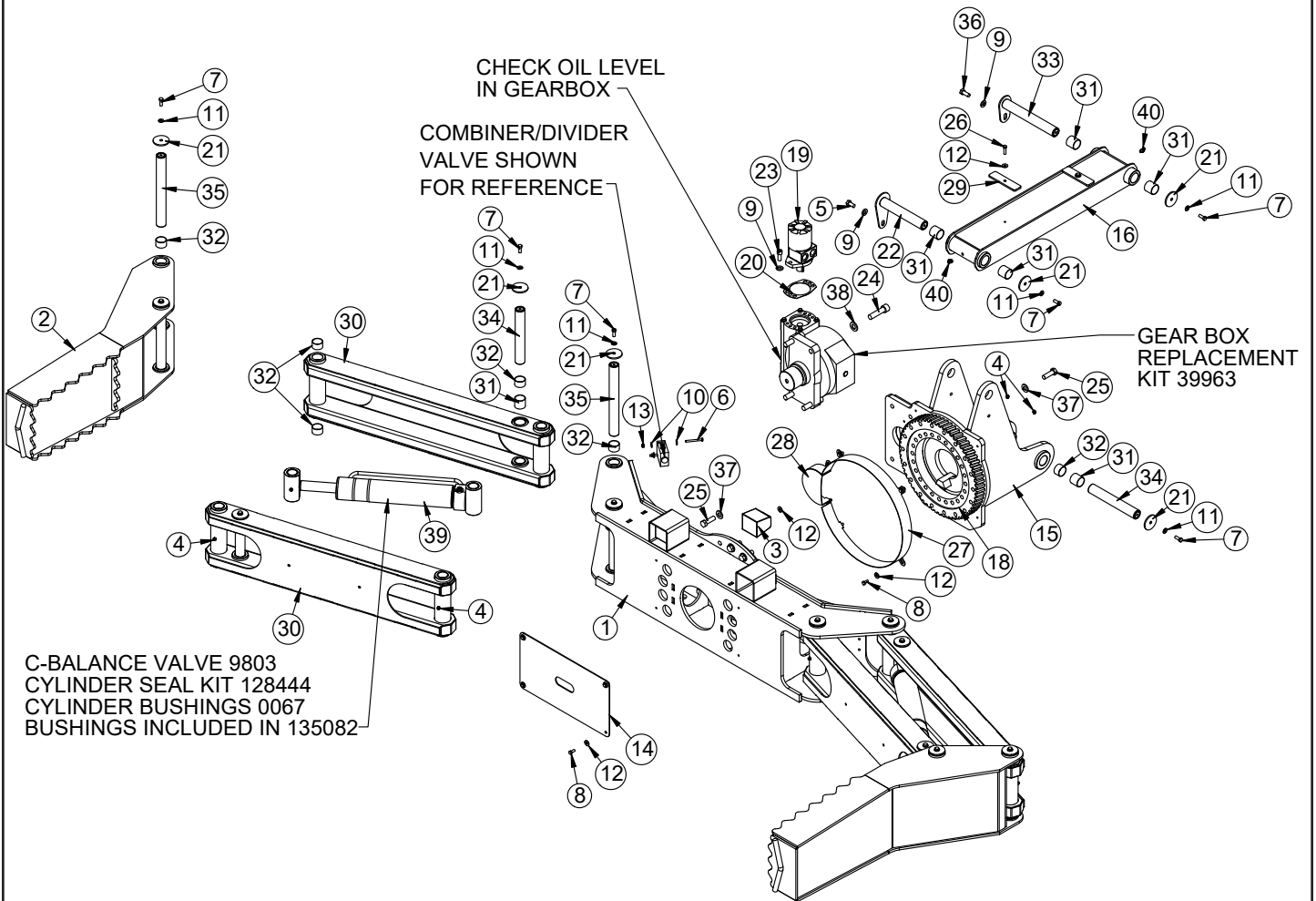
ITEM	P/N	DESCRIPTION	QTY.
01	38664	DECAL CAPACITY TM4110	2
02	35113	DECAL TM4110 TIREMAN ROTATION	1
03	35114	DECAL TM4110 RATED LOAD	2
04	54598	DECAL IDENTIFICATION TM4110	2
05	53850	DECAL STELLAR LOGO 4.00X11.5	2
06	24982	DECAL NO STEP 5.00X1.25	2

Chapter 3 - Assembly Drawings

Chapter Contents

TM4110 Standard Assembly - PN 135084	16
TM4110 Standard Assembly - PN 135084 Parts List	17
TM4110 Standard Assembly - PN 130915	18
TM4110 Standard Assembly - PN 130915 Parts List	19
TM4110 Standard Assembly - PN 130915 Parts List	20

TM4110 Standard Assembly - PN 135084



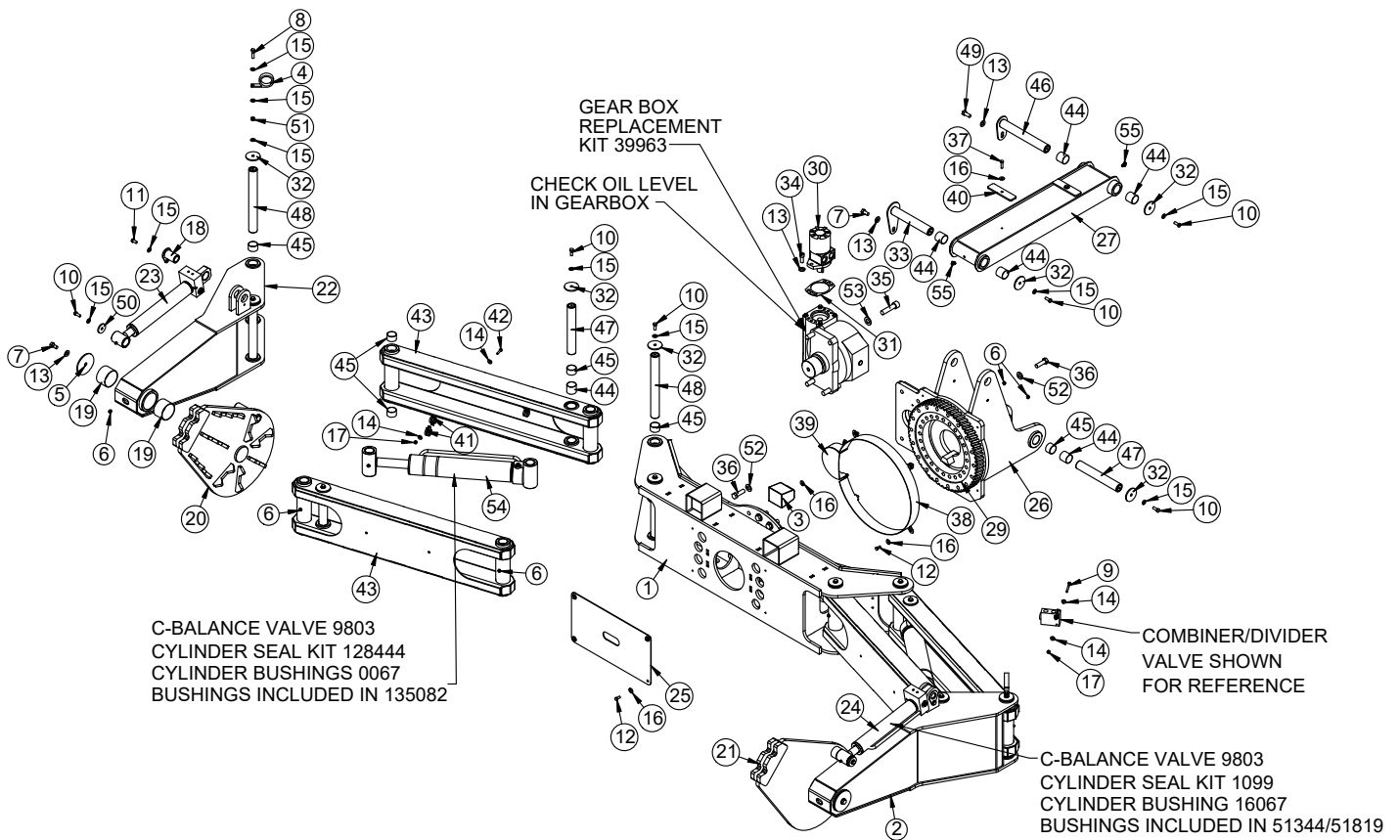
ITEMS NOT SHOWN

PART	DESCRIPTION	QTY
131949	WIRE HARNESS FLOOD LIGHT TM14160	1
35432	DECAL KIT TM4110	1
99146	HYD KIT TM6116 V2	1
D0240	FTG 4-2 CPRSN-MP 90	1
D1810	TBE AIR SAEJ844 TYPE A .25 (RM)	0.67 FT
D1345	FTG 4-2 CPRSN-MP STRAIGHT	1
22161	FTG 2-2 FP-FP COUPLER STRAIGHT BRASS	1
56589	ZERK 1/8 NPT STRAIGHT LONG THREAD	1
9752	CONNECT 2 PIN SHROUD PACKARD	2
9756	CONTACT M TERM SHROUD 18-20	4
8384	CABLE SEAL 18-20 PACKARD 39000	4
131949	MANUALTM411 V3	1

TM4110 Standard Assembly - PN 135084 Parts List

PN 135084			
ITEM	PART	DESCRIPTION	QTY
1	130916	BODY TM4110 V3	1
2	133368	ARM TM4110 V3 FIXED	2
3	78431	LIGHT FLOOD LED 3.2X2.9 850LM 16W 10-30V	2
4	C1592	ZERK 1/8 NPT STRAIGHT	10
5	10172	CAP SCR 0.50-13X1.00 HHGR8	1
6	0339	CAP SCR 0.25-20X2.50 HHGR5	2
7	13573	CAP SCR 0.38-16X1.00 HHGR8	28
8	0420	CAP SCR 0.31-18X0.75 HHGR5	10
9	D0790	WASHER 0.50 SAE FLAT YELLOW GR8	4
10	0340	WASHER 0.25 USS FLAT	4
11	C6353	WASHER 0.38 SAE FLAT YELLOW GR8	28
12	0343	WASHER 0.31 USS FLAT	14
13	0333	NUT 0.25-20 HHGR5 NYLOC	2
14	132394	COVER BODY FRONT TM4110 V3	1
15	132729	BASE TM4110 V3	1
16	132399	LINK BASE TM4110 V3	1
17	33944	GEAR BOX TM4110 008-00253-1	1
18	33945	TURNTABLE BEARING 450-05110-1	1
19	32308	MOTOR HYD EATON 158-1035	1
20	21151	GASKET MOTOR 008-10056-1	1
21	7403	PIN CAP 0.56X3.50X.25	28
22	35102CR	PIN TEAR DROP 1.50X9.06 ZC	1
23	D1307	CAP SCR 0.50-13X1.25 SH	2
24	35097	CAP SCR 0.75-10X3.00 SH	4
25	C1025	CAP SCR 0.63-11X2.00 HHGR8	30
26	0485	CAP SCR 0.31-18X1.25 HHGR5	2
27	132395	GUARD TTB TM4110 V3	1
28	132396	GUARD TTB TM4110 V3 PC BLACK	1
29	18042	HOSE CLAMP TM14160 PC WHITE	2
30	131776	LINK TM4110 V3	4
31	0067	BUSHING BPC24DXR24 1.50X1.50	14
32	16067	BUSHING BPC24DXR16 1.50X1.00	42
33	61404CR	PIN TEAR DROP 1.50X11.06 ZC	1
34	13873CR	PIN 1.50X10.00 D&T ZC	5
35	132393CR	PIN 1.50X13.13 D&T	8
36	10666	CAP SCR 0.50-13X1.25 HHGR8	1
37	C5902	WASHER 0.63 SAE FLAT YELLOW GR8	30
38	C6219	WASHER 0.75 SAE FLAT YELLOW GR8	4
39	135082	CYLINDER 3.00X13.63	2
40	C1597	ZERK 1/8 NPT 90 DEG	2
REV. INITIAL RELEASE			

TM4110 Standard Assembly - PN 130915



TM4110 Standard Assembly - PN 130915 Parts List

PN 130915			
ITEM	PART	DESCRIPTION	QTY
1	130916	BODY TM4110 V3	1
2	131788	ARM TM4110 V3 90 DEG CS	1
3	78431	LIGHT FLOOD LED 3.2X2.9 850LM 16W 10-30V	2
4	D1447	CLAMP 2.00 HK 3317	2
5	13315	PIN CAP 0.56X4.00X0.19 YZ	2
6	C1592	ZERK 1/8 NPT STRAIGHT	12
7	10172	CAP SCR 0.50-13X1.00 HHGR8	3
8	16962	CAP SCR 0.38-16X1.50 HHGR8	2
9	0339	CAP SCR 0.25-20X2.50 HHGR5	4
10	13573	CAP SCR 0.38-16X1.00 HHGR8	28
11	9843	CAP SCR 0.38-16X0.75 HHGR8	2
12	420	CAP SCR 0.31-18X0.75 HHGR5	10
13	D0790	WASHER 0.50 SAE FLAT YELLOW GR8	6
14	0340	WASHER 0.25 USS FLAT	16
15	C6353	WASHER 0.38 SAE FLAT YELLOW GR8	36
16	0343	WASHER 0.31 USS FLAT	14
17	0333	NUT 0.25-20 HHGR5 NYLOC	8
18	51652CR	PIN TEAR DROP 1.50X2.31 ZC	2
19	0865	BUSHING BPC48DXR32 3.00X2.00	4
20	125795	PAD TM6116 V2 ROT PAD SHORT GRIP SS	1
21	125794	PAD TM6116 V2 ROT PAD SHORT GRIP CS	1
22	131789	ARM TM4110 V3 90 DEG SS	1
23	51344	CYLINDER 2.00X9.75 SS	1
24	51819	CYLINDER 2.00X9.75 CS	1
25	132394	COVER BODY FRONT TM4110 V3	1
26	132729	BASE TM4110 V3	1
27	132399	LINK BASE TM4110 V3	1
28	33944	GEAR BOX TM4110 008-00253-1	1
29	33945	TURNTABLE BEARING 450-05110-1	1
30	32308	MOTOR HYD EATON 158-1035	1
31	21151	GASKET MOTOR 008-10056-1	1
32	7403	PIN CAP 0.56X3.50X.25	28
33	35102CR	PIN TEAR DROP 1.50X9.06 ZC	1
34	D1307	CAP SCR 0.50-13X1.25 SH	2
35	35097	CAP SCR 0.75-10X3.00 SH	4
36	C1025	CAP SCR 0.63-11X2.00 HHGR8	30
37	0485	CAP SCR 0.31-18X1.25 HHGR5	2
38	132395	GUARD TTB TM4110 V3	1
39	132396	GUARD TTB TM4110 V3 PC BLACK	1
40	18042	HOSE CLAMP TM14160 PC WHITE	2
41	7623	CLAMP 1.00 RUBBER	8

TM4110 Standard Assembly - PN 130915 Parts List

PN 130915

ITEM	PART	DESCRIPTION	QTY
42	0437	CAP SCR 0.25-20X1.25 HHGR5	4
43	131776	LINK TM4110 V3	4
44	0067	BUSHING BPC24DXR24 1.50X1.50	14
45	16067	BUSHING BPC24DXR16 1.50X1.00	42
46	61404CR	PIN TEAR DROP 1.50X11.06 ZC	1
47	13873CR	PIN 1.50X10.00 D&T ZC	5
48	132393CR	PIN 1.50X13.13 D&T	8
49	10666	CAP SCR 0.50-13X1.25 HHGR8	1
50	9320	PIN CAP 0.56X3.50X.25	2
51	56673	NUT 0.38-16 HHGR8 NYLOC	2
52	C5902	WASHER 0.63 SAE FLAT YELLOW GR8	30
53	C6219	WASHER 0.75 SAE FLAT YELLOW GR8	4
54	135082	CYLINDER 3.00X13.63	2
55	C1597	ZERK 1/8 NPT 90 DEG	2

REV. A

ITEMS NOT SHOWN

PART	DESCRIPTION	QTY
21409	WIRE HARNESS FLOOD LIGHT TM14160	1
35432	DECAL KIT TM4110	1
99146	HYD KIT TM6116 V2	1
D0240	FTG 4-2 CPRSN-MP 90	1
D1810	TBE AIR SAEJ844 TYPE A .25 (RM)	0.67 FT
D1345	FTG 4-2 CPRSN-MP STRAIGHT	1
22161	FTG 2-2 FP-FP COUPLER STRAIGHT BRASS	1
56589	ZERK 1/8 NPT STRAIGHT LONG THREAD	1
9752	CONNECT 2 PIN SHROUD PACKARD	2
9756	CONTACT M TERM SHROUD 18-20	4
8384	CABLE SEAL 18-20 PACKARD 39000	4
131949	MANUALTM411 V3	1



Subject to Change without Notification.
© 2024 Stellar Industries, Inc.