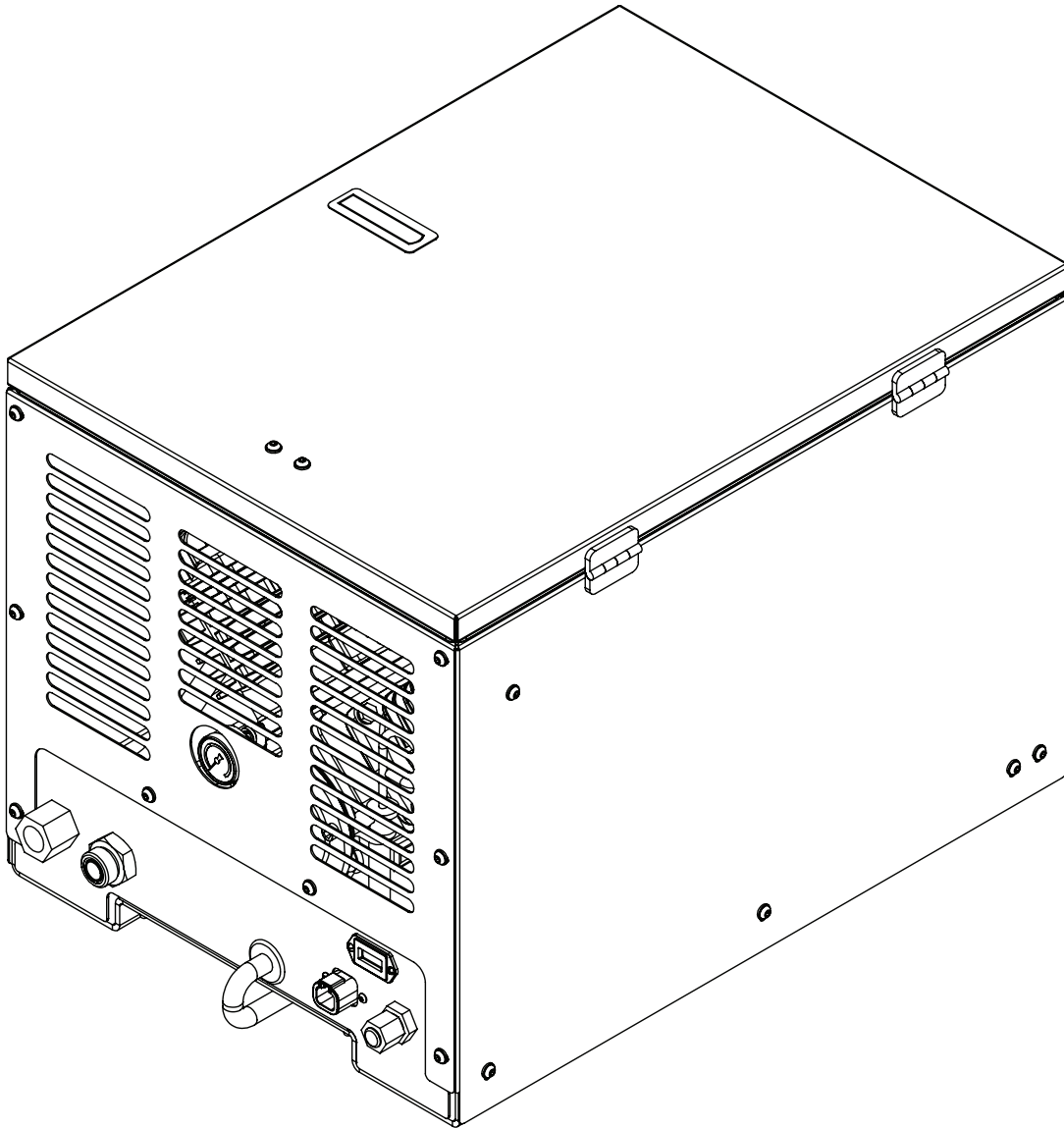


Model 30P

Single-Stage Piston Compressor Manual

Specifications • Installation • Assembly



Stellar Industries Inc.
740 North State Street
PO Box 169
Garner, IA 50438
800-392-3015
www.stellarindustries.com

Model 30P Manual Revisions

Date of Revision	Section Revised	Description of Revision

STELLAR[®] MODEL

SERIAL NO.

PATENT / IP INFORMATION: www.stellarindustries.com/ip DATE

MADE IN THE USA
by the Employee Owners of Stellar Industries PN 112060

Table of Contents

Introduction	iv
Chapter 1 - Specifications	1
Chapter 2 - Installation	3
Component Installation	3
Component Installation, continued	4
30P Electrical Schematic	5
Hydraulic System	6
Air System	6
Compressor Pressure Switch	7
Typical Hydraulic Circuit for Single-Section Pump	8
Typical Hydraulic Circuit for Tandem (Two Part) Pump	9
Typical Hydraulic Circuit for Compressor with Auxiliary Cooler	10
Chapter 3 - Assembly Drawings	11
30P Case Assembly - PN 66354	11
30P Assembly Drawing - PN 66338	12
SUH-60 Compressor Assembly	14
Crankcase Group (Tapered Shaft)	15
Crankcase Group (Straight Shaft)	16
Cylinder Group	17
Head Group	18
Head Options	19
Optional Head Unloader	20
Flywheel Options	21
Clutch Options	22
Chapter 4 - Replacement Parts	23

For Technical Questions, Information, Parts, or Warranty, Call Toll-Free at

800-321-3741

Hours: Monday - Friday, 8:00 a.m. - 5:00 p.m. CST

Or email at the following addresses:

Technical Questions, and Information:

service@stellarindustries.com

Order Parts:

parts@stellarindustries.com

Warranty Information:

warranty@stellarindustries.com

Introduction

Stellar Industries® Air Compressors are designed to provide safe and dependable service for a variety of operations. With proper use and maintenance, these air compressors will operate at peak performance for many years.

To promote this longevity, carefully study the information contained in this manual before putting the equipment into service. Though it is not intended to be a training manual for beginners, this manual should provide solid guidelines for the safe and proper usage of the air compressor.

Once you feel comfortable with the material contained in this manual, strive to exercise your knowledge as you safely operate and maintain the air compressor. This process is vital to the proper use of the unit.

A few notes on this manual:

A copy of this manual is provided with every air compressor and can be found in the hard plastic manual case that is installed on the chassis. A copy of this manual shall remain with the air compressor at all times.

Throughout the manual, three signal words will be used to bring attention to important items:

NOTICE

A NOTICE signal word indicates a practice not related to physical injury.

⚠ WARNING

A WARNING signal word indicates a hazardous situation which, if not avoided, could result in death or serious injury.

⚠ DANGER

A DANGER signal word indicates a hazardous situation which, if not avoided, will result in death or serious injury.

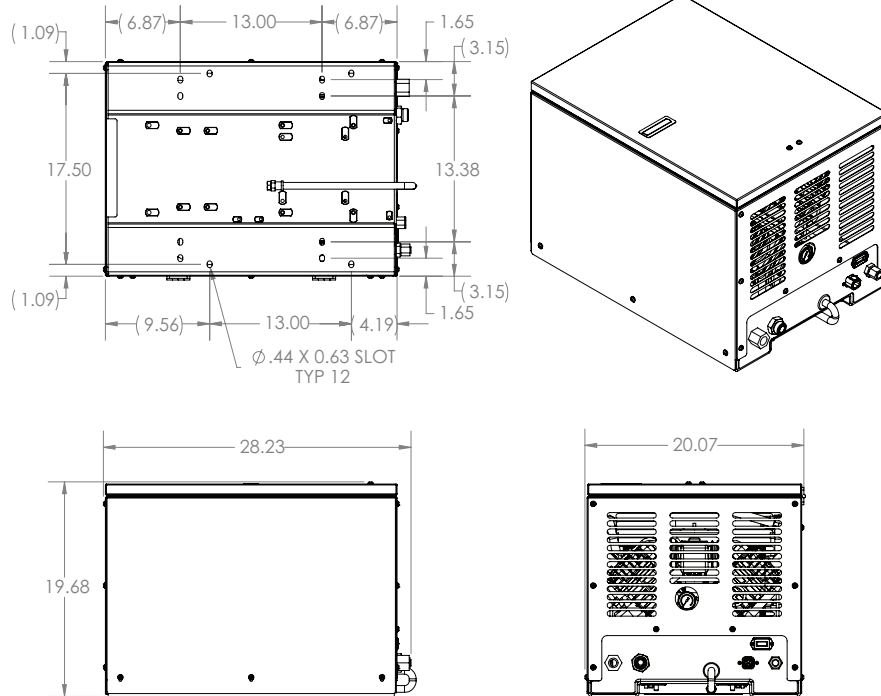
Information contained within this manual does not cover all maintenance, operating, or repair instructions pertinent to all possible situations. Please be aware that some sections of this manual contain information pertaining to Stellar Industries® manufactured air compressors in general and may or may not apply to your specific model.

This manual is not binding. Stellar Industries reserves the right to change, at any time, any or all of the items, components, and parts deemed necessary for product improvement or commercial/production purposes. This right is kept with no requirement or obligation for immediate mandatory updating of this manual.

In closing:

If more information is required or technical assistance is needed, or if you feel that any part of this manual is unclear or incorrect, please contact the Stellar Industries Customer Service Department by phone at 800-392-3015 or email at service@stellarindustries.com.

Chapter 1 - Specifications



SPECIFICATIONS	30P
Hydraulic System	10-11 GPM @ 1650 PSI
Compressor RPM	1300 RPM
Hydraulic Operating Pressure	1650 PSI
Hydraulic Relief Pressure	3000 PSI
Max Working Pressure	150 PSI
Air Delivery (At Max Speed)	30 CFM @ 100 PSI
Weight (Hydraulic Driven Asm)	225 lbs.
Weight (Air Pump Only)	89 lbs.
Dimensions (Length)	28.25"
Dimensions (Width)	20.13"
Dimensions (Height)	19.75"
Electrical	12V DC
Crankcase Oil Capacity	1 Quart
Cooler Fan	800 CFM, 12 Volt (Pull)
Drive Type	Direct Driven

NOTICE

Duty cycle on Piston Compressors is 50:50 over 10 minutes.

This page intentionally left blank.

Chapter 2 - Installation

Component Installation

This section pertains to the installation of the air compressor, PTO, pump and other related items. The instructions are intended as a guide to assist you with particular installation. These instructions will provide only general information.

Compressor Torque Procedure

Head Assembly:

Torque Value: 34 ft-lbs

Procedure: Assemble head on the cylinder with head bolts started only, not tight. Working in the pattern shown, torque three times, increasing the torque each time as follows:

First Torque: 10 ft-lbs

Second Torque: 20 ft-lbs

Third Torque: 34 ft-lbs

After five hours of use re-torque bolts to 34 ft-lbs.

Cylinder Assembly:

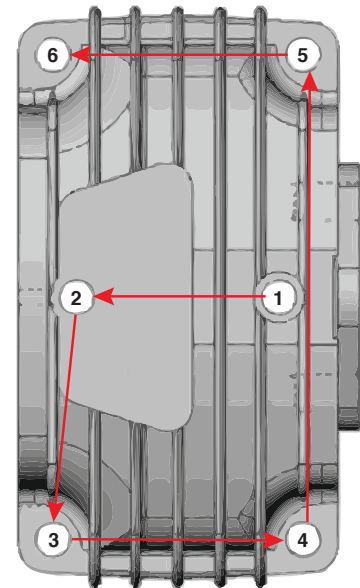
Torque Value: 20 ft-lbs

Procedure: After assembling cylinder over pistons and setting into place, tighten (6) cap screws finger tight. In a criss-cross pattern, tighten bolts evenly so all bolts are hand snug. Again in a criss-cross pattern torque each bolt to 20 ft-lbs, checking each bolt twice. After five hours of use, re-torque bolts to 20 ft-lbs.

Connecting Rod Control:

Torque Value: 18 ft-lbs

Procedure: Assemble rod onto the crankshaft taking care to align the machined surfaces together and tighten cap screws finger tight. Tighten bolts until hand tight and torque to 18 ft-lbs. Check twice the torque reading before final assembly of the cylinders.



Component Installation, continued

Pump Assembly:

The pump assembly may either be installed directly on the PTO or as an optional method, may be driven by a driveline from the PTO. Pump manufacturers provide specific installation information for their products and should be consulted if questions arise. Note: A dual or tandem hydraulic pump is recommended when additional hydraulically operated equipment are added to the hydraulic system.

PTO Assembly:

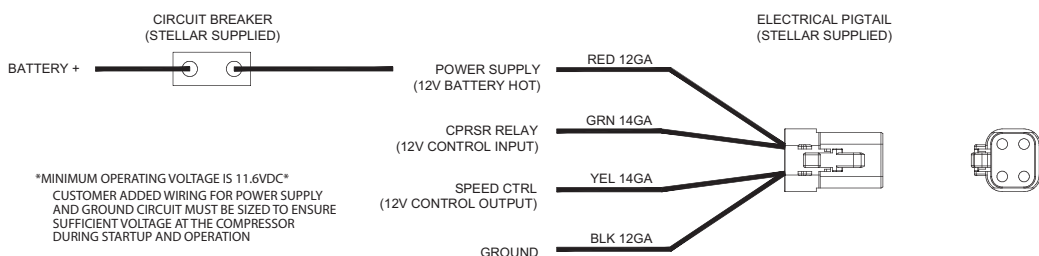
Check with the PTO manufacturer's representative for specific instructions regarding your particular make, model, and year of vehicle. As some trucks may require modification of the transmission cross member and the exhaust system, the manufacturer's instructions should be followed to ensure proper installation of the PTO.

Compressor Assembly:

Prepare the mounting location of the compressor by locating and drilling four (4) holes, 1/2" diameter as per the mounting pattern of the air compressor base. Using four (4) 3/8" x 1.25 GR-5 cap screws, 3/8" flat washer, and 3/8" nyloc nut, secure the compressor in place. The compressor is air cooled, and must have a clean supply of cooling air to the fan with minimum restrictions. Adequate space must be provided for proper circulation of air.

Electric Speed Control:

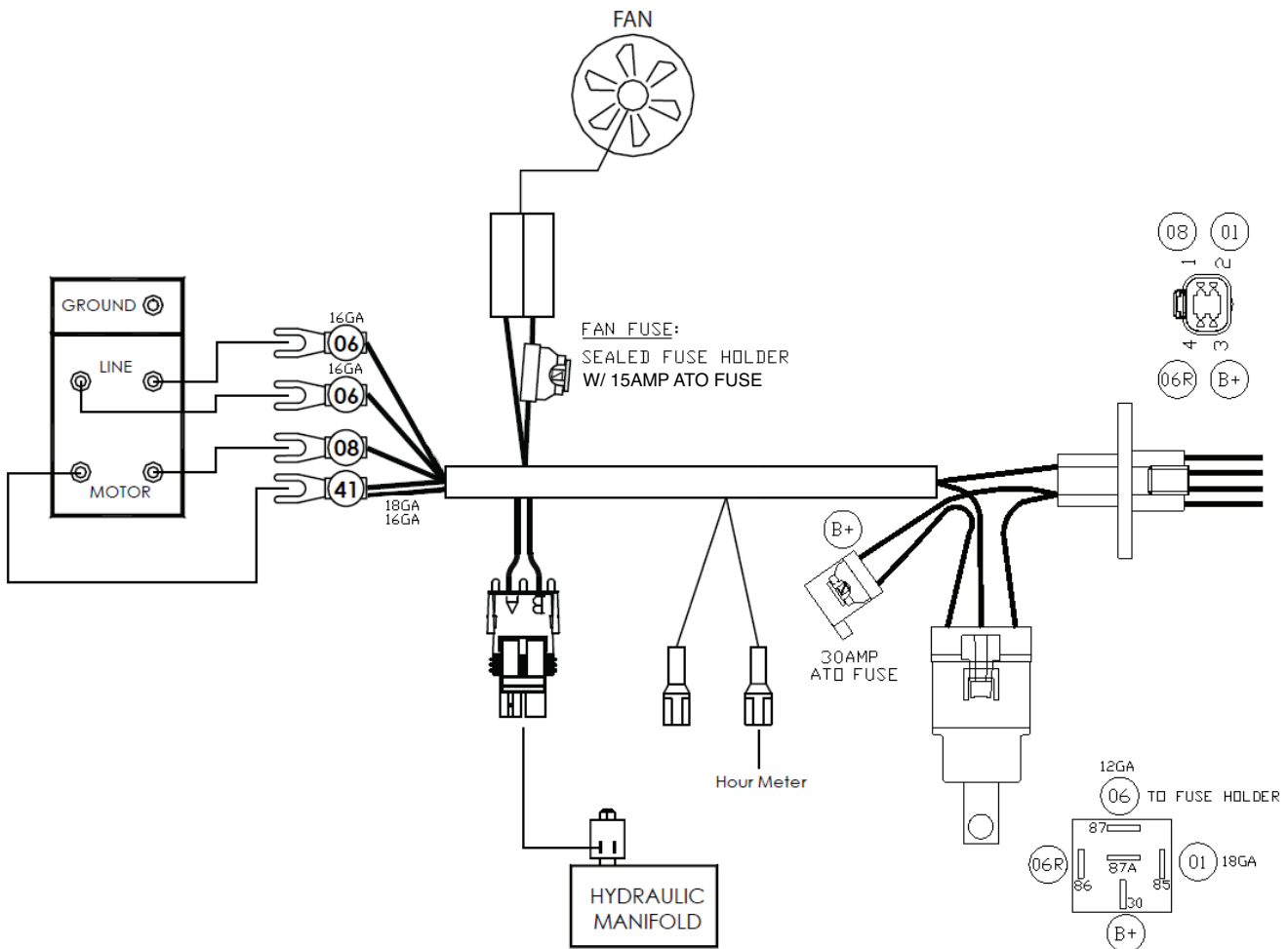
An optional electric or electronic speed control must be used to maintain proper operating speed of the air compressor. The engine speed control will automatically increase from idle to preset speed when engaged and decrease when disengaged.



30P Electrical Schematic

Electrical Connections:

Supplied with the compressor is a wire harness pigtail which has 4 leads coming off of it. Connect the black wire to the vehicle frame or other suitable ground. Connect the red lead to a fused power source. Mount a single throw toggle switch in a convenient location and connect the green wire from the compressor to this switch. Connect the other switch terminal to a fuse holder and then to a 12V power supply. The yellow wire is required from the compressor when connecting the speed control into the system.



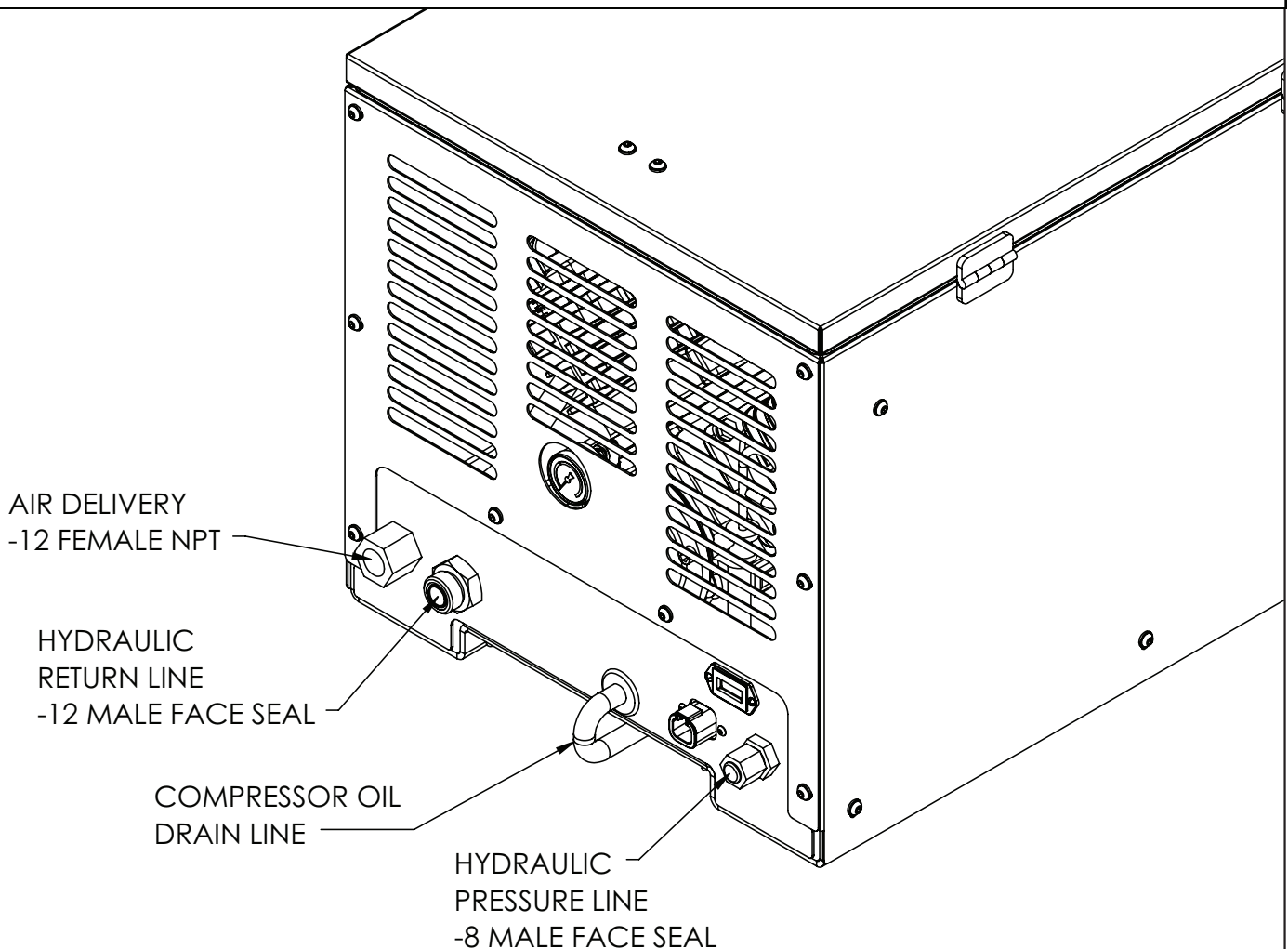
CIRCUIT #	CIRCUIT	WIRE GA	WIRE COLOR
01	GROUND	SEE DWG	BLACK WITH WHITE TEXT
06	COMPRESSOR	SEE DWG	GREEN WITH BLACK TEXT
06R	CPRSR RLY	14GA	GREEN WITH BLACK TEXT
B+	BAT POS	12GA	RED WITH BLACK TEXT
08	SPEED CNTRL	14GA	GREEN WITH BLACK TEXT
41	HYDRAULIC SOLENOID	SEE DWG	GREEN WITH BLACK TEXT

Hydraulic System

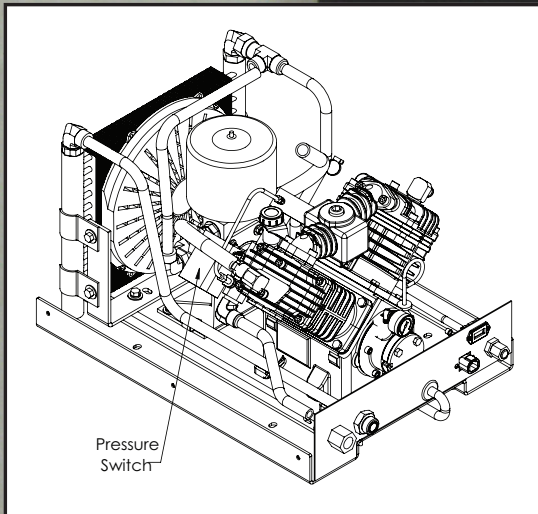
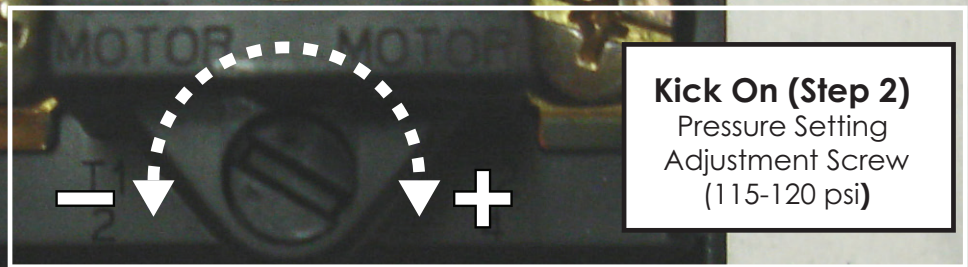
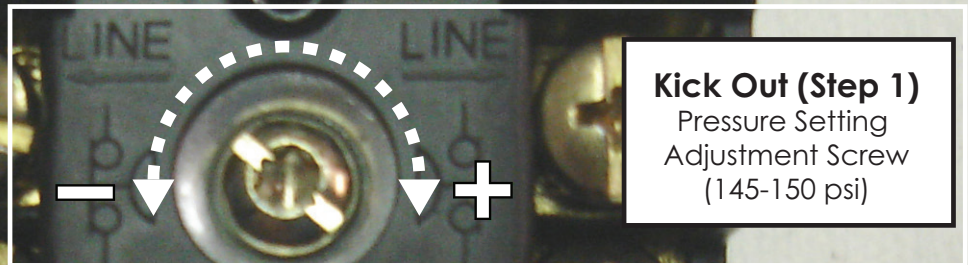
The hydraulic system consists of the oil reservoir, pump, manifold, motor, filters, and hoses. A 1/2" 3000psi pressure line should be connected to the pressure line fitting on the bulkhead. This line is plumbed through an internal manifold block, and then to the motor. After the motor there is an internal cooler which the oil passes through before going to the return line bulkhead fitting. A 3/4" minimum low-pressure return line is to connect to the return bulkhead fitting and filter before being returned to the oil reservoir. Stellar Industries recommends a sufficiently-sized reservoir be provided that includes the proper suction and return filters. The cooler on the compressor is designed and sized to cool the air compressor efficiently. An auxiliary oil cooler is required when additional hydraulically operated equipment is added to the hydraulic system. Pressure on the return line exceeding 200PSI can and will cause damage to the filter, cooler, and components of the compressor's hydraulic system.

Air System

The airline is routed using a 3/4" 200 psi air/steam hose. This delivery line should be free from all obstructions. Note: There should be no check valve installed between the compressor and the air tank (One is already included in the compressor package). Stellar Industries recommends the installation of a ten-gallon air tank (minimum) to maintain proper operation of the air compressor.



Compressor Pressure Switch

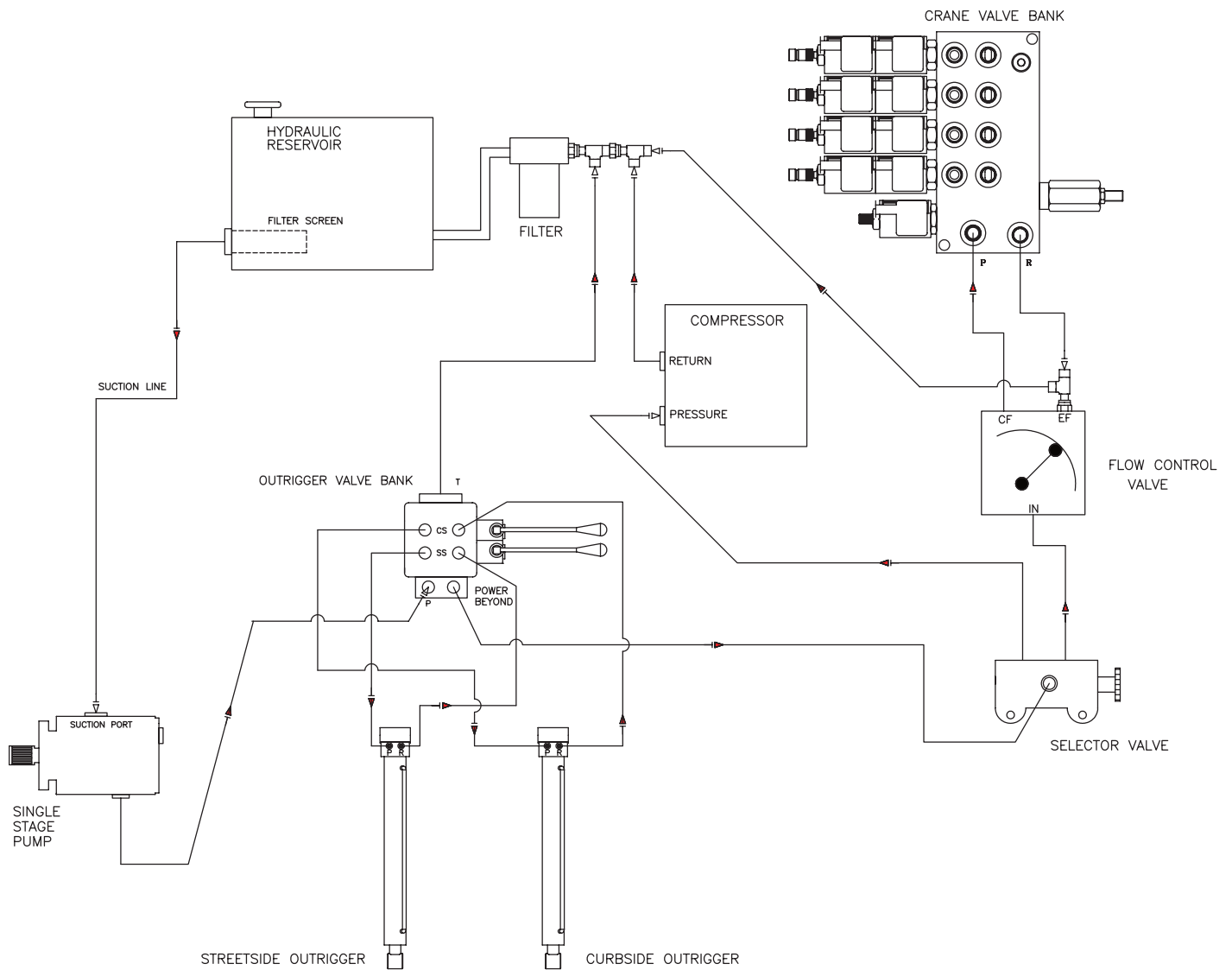


Note: Turning adjustment screws clockwise increases psi settings.
Turning adjustment screws counterclockwise decreased psi settings.

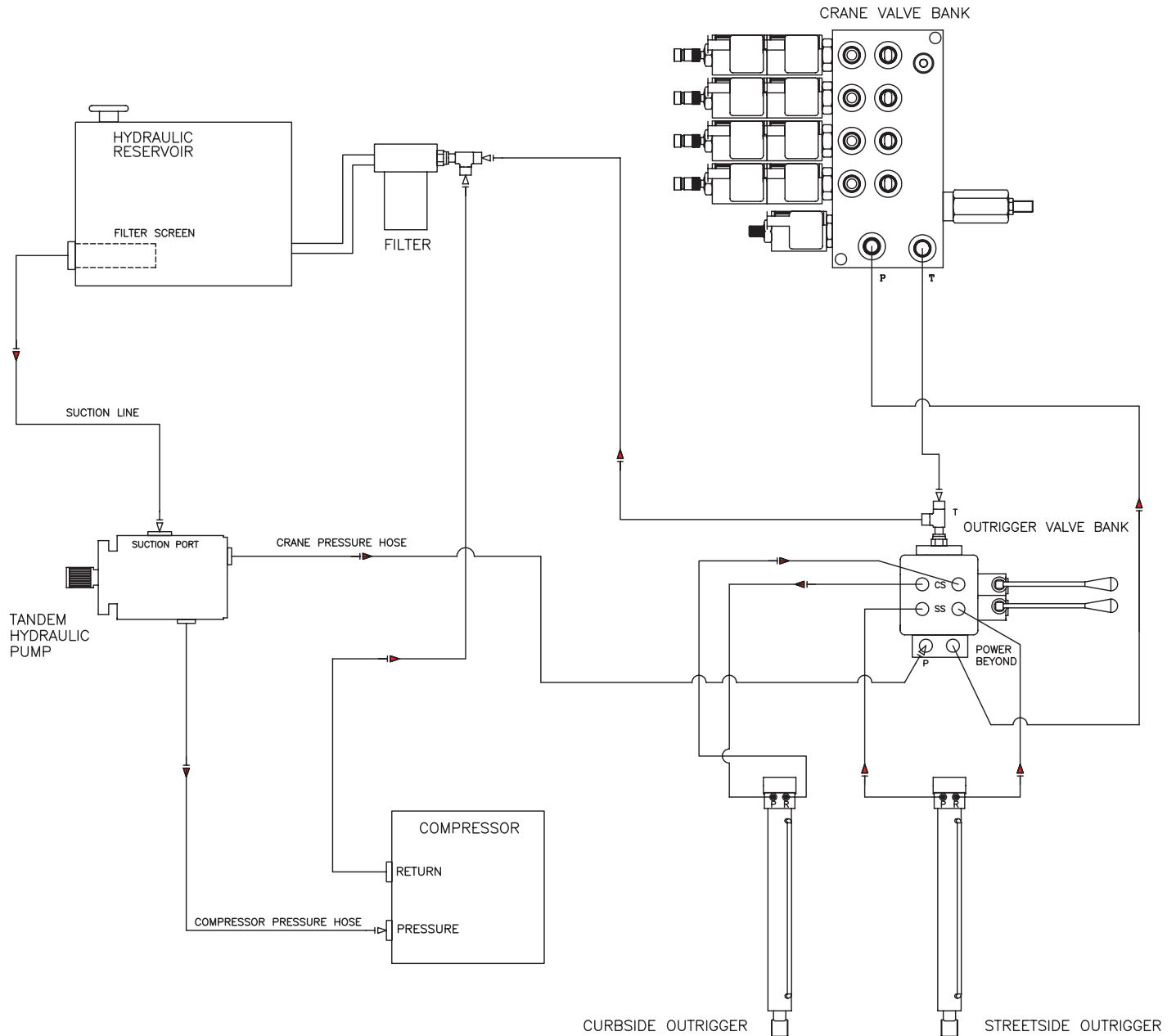
Pressure Setting Instructions:

1. Always set the kick out pressure setting first. Adjust the kick out screw setting to 145 psi minimum/150 psi maximum.
2. After kick out pressure is set, adjust the kick on screw setting to 115 psi minimum/120 psi maximum.
3. Cycle compressor to verify correct settings.
4. For questions about this procedure, please contact Stellar Industries Customer Service at 800-321-3741.

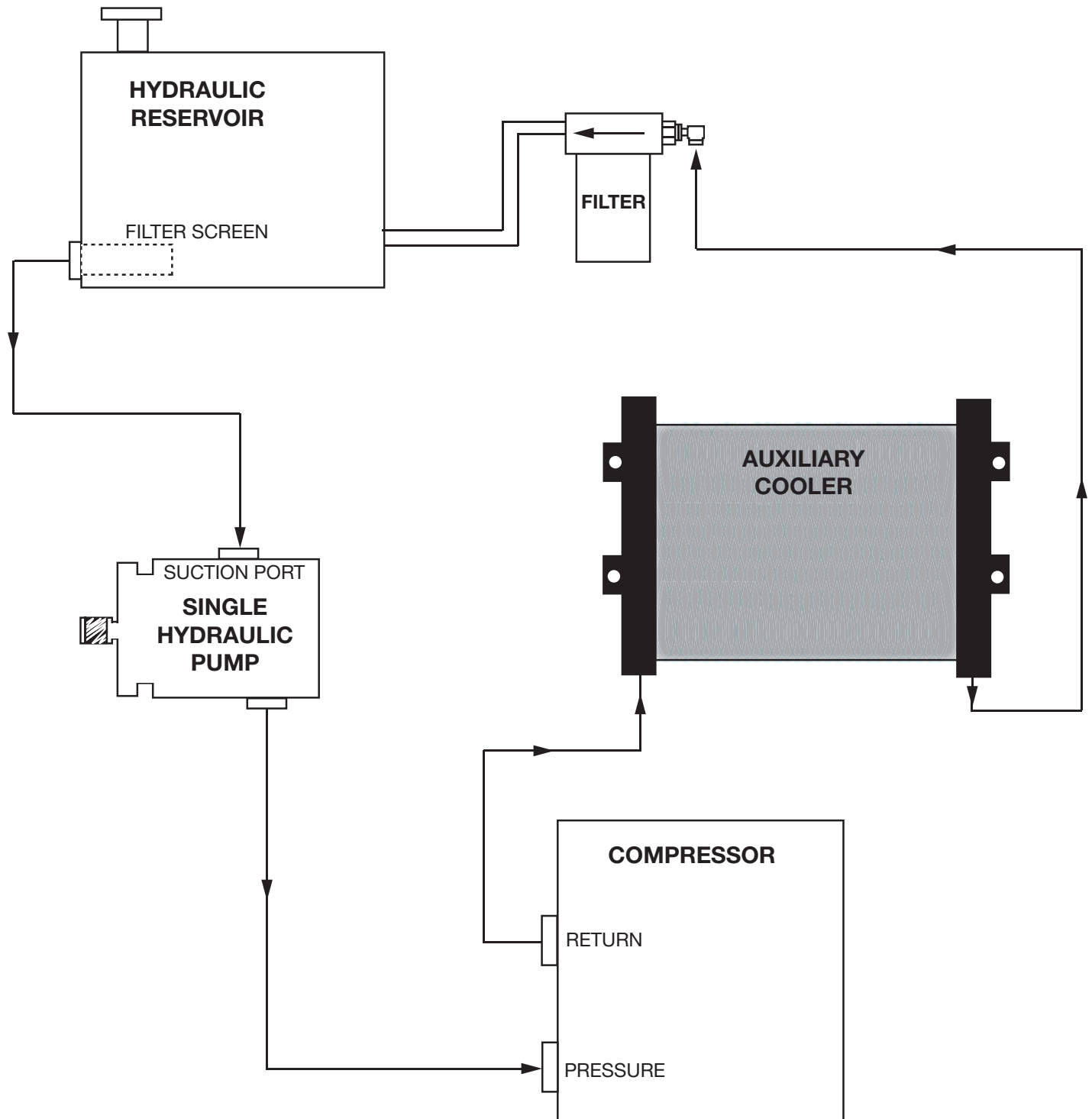
Typical Hydraulic Circuit for Single-Section Pump



Typical Hydraulic Circuit for Tandem (Two Part) Pump

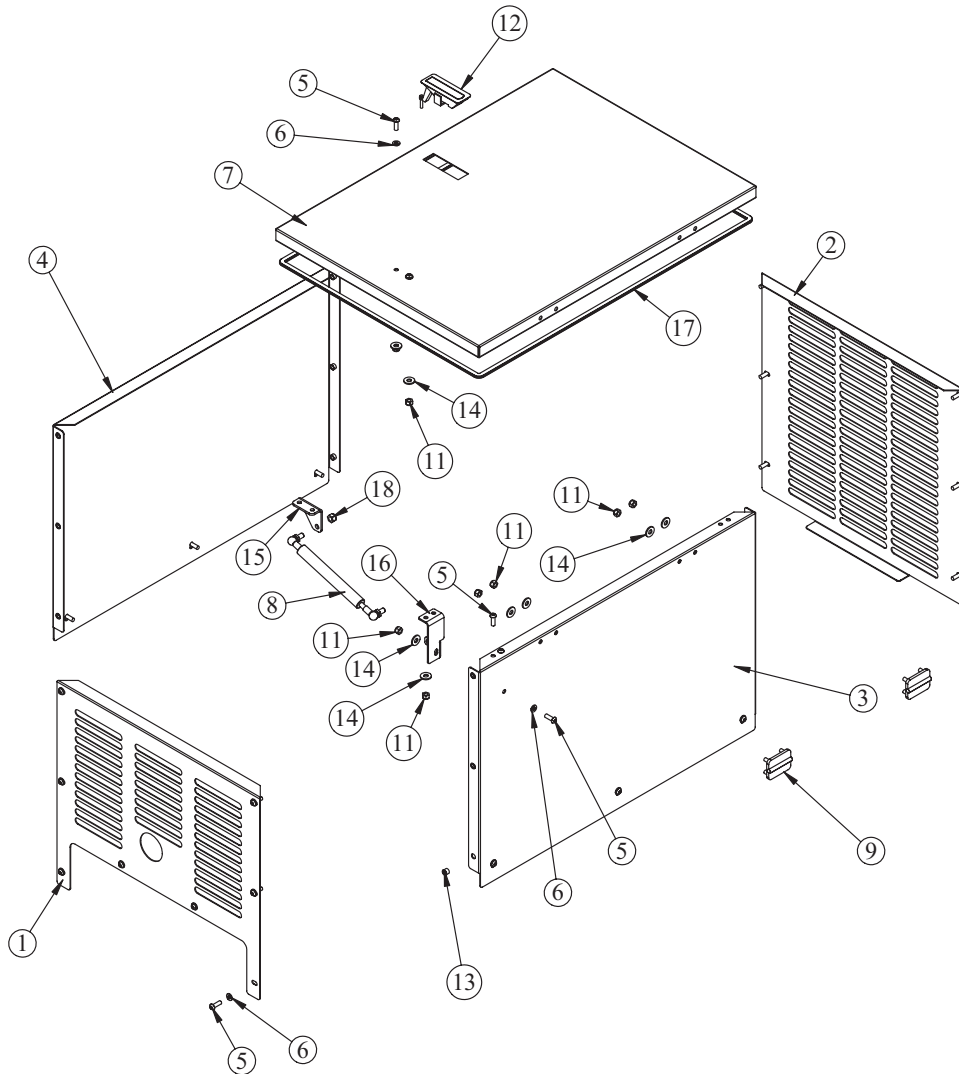


Typical Hydraulic Circuit for Compressor with Auxiliary Cooler



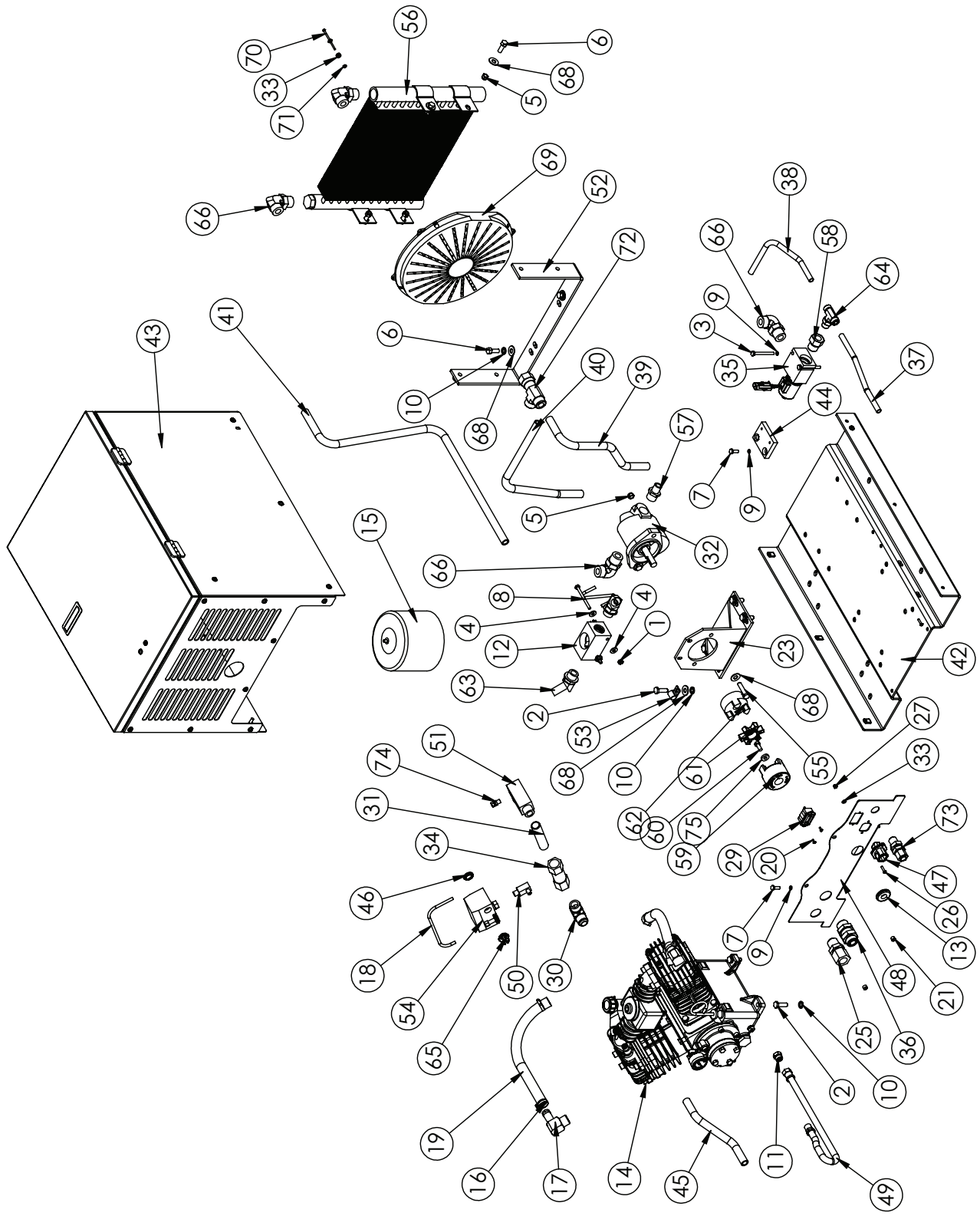
Chapter 3 - Assembly Drawings

30P Case Assembly - PN 66354



ITEM	PART	DESCRIPTION	QTY.
1	66352	PANEL FRONT CPRSR SHD43/60 SHROUD	1
2	66353	PANEL BACK CPRSR SRS40/SHD43/60 SHROUD	1
3	67903	PANEL SIDE RH SRS40/SHD43/60 SHROUD	1
4	67511	PANEL SIDE LH SRS40/SHD43/60 SHROUD	1
5	C6021	CAP SCR 0.25-20X0.75 BTNHD SS	25
6	19592	WASHER 0.25 FLAT NYLON	23
7	67904	PANEL LID CPRSR SRS40/SHD43/60 SHROUD	1
8	69103	GAS SPRING 7.50-12.00 30# FORCE	1
9	70379	HINGE ZINC BLK FLUSH SURFACE MNT DC-50-P8	1
10	70379	HINGE ZINC BLK FLUSH SURFACE MNT DC-50-P8	1
11	0333	NUT 0.25-20 HHGR5 NYLOC	13
12	69101	LATCH SWING LEVER FLUSH TRIGGER 0.91-1.81	1
13	19589	NUT SERT 0.25-20X0.38 OD	12
14	D0917	WASHER 0.25 FLAT SS	13
15	73654	BRKT LID GASPROP CPRSR SHROUD V2 PC WHITE	1
16	73653	BRKT LOWER GASPROP CPRSR SHROUD V2 PC WHITE	1
17	73723	WEATHERSTRIP RIBBED 0.38X0.13X90.00	1
18	0342	NUT 0.31-18 HHGR5 NYLOC	2

30P Assembly Drawing - PN 66338

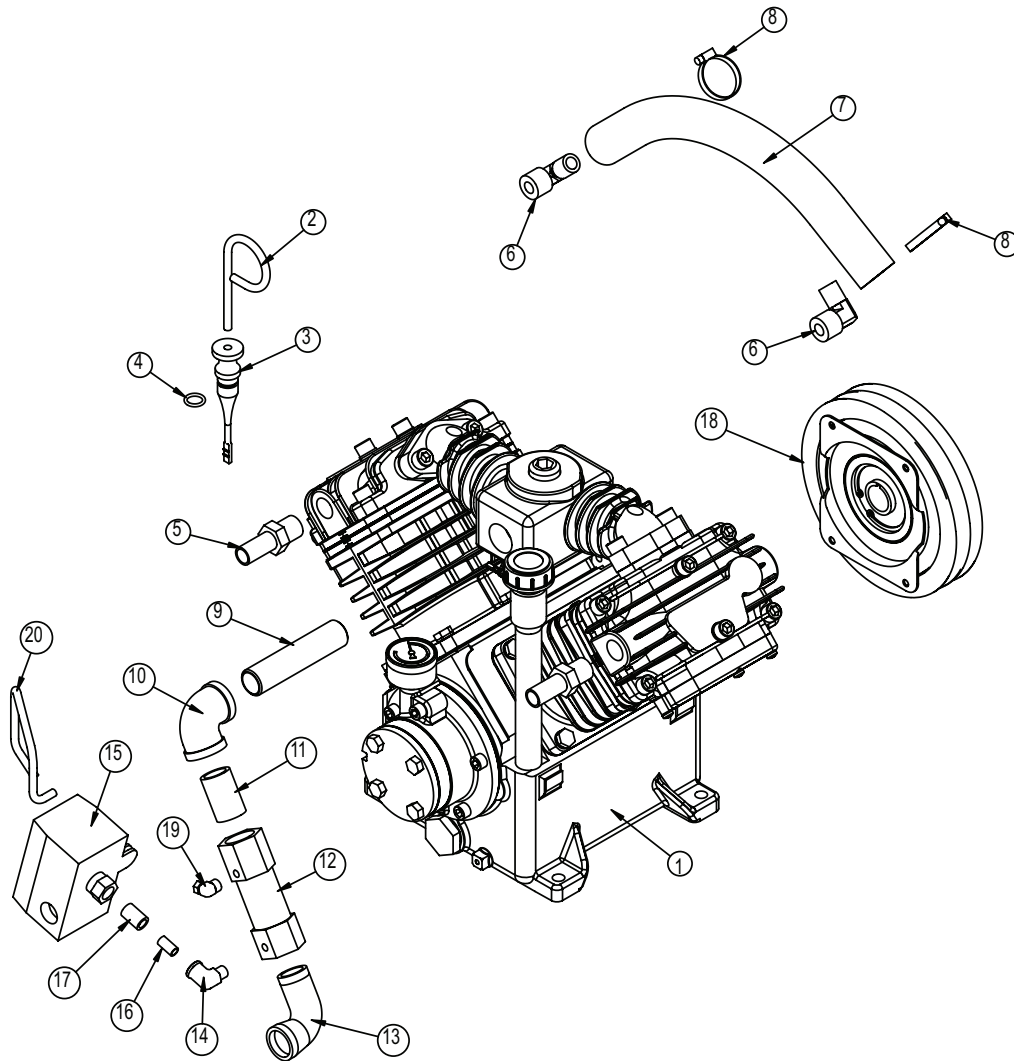


30P Assembly Bill - PN 66338

ITEM	PART	DESCRIPTION	QTY.
1	0333	NUT 0.25-20 HHGR5 NYLOC	2
2	0335	CAP SCR 0.38-16X1.25 HHGR5	8
3	0339	CAP SCR 0.25-20X2.50 HHGR5	2
4	0340	WASHER 0.25 FLAT	4
5	0347	NUT 0.38-16 HH NYLOC	6
6	0351	CAP SCR 0.38-16X1.00 HHGR5	6
7	0479	CAP SCR 0.25-20X0.75 HHGR5	4
8	0482	CAP SCR 0.25-20 X 3.00 HHGR5	2
9	0521	WASHER 0.25 LOCK	6
10	0523	WASHER 0.38 LOCK	10
11	0560	FTG 6 MFS PLUG	1
12	12180	FILTER MANIFOLD SHD60 CPRSR	1
13	12813	GROMMET 1.25ODX0.125X0.625ID	1
14	13523	CPRSR V480CT66NP	1
15	13529	FILTER AIR SHD60	1
16	13577	CLAMP UNI 1.19 O.D. .5019	4
17	13638	FTG 12-12 HB-MP 90 MODIFIED CUT	2
18	14267	TUBING COPPER 0.25 X 9.00	1
19	14600	HOSE SUCTION 0.75 X 13.00	2
20	18611	SCREW #6-32X0.38 HH MACH SELF TAP	2
21	19589	NUT SERT 0.25-20X0.38 OD	2
22	19592	WASHER 0.25 FLAT NYLON	1
23	19644	BRKT MOTOR MOUNT 19644 POWDERCOAT	1
24	20451	FTG 2-2 MP-FP STREET ELBOW 90 BRASS	1
25	21393	FTG 12-12 FP-MJ BULKHEAD STRAIGHT	1
26	22183	SCREW #8-32X0.75 BTNHID SS	2
27	22186	NUT #8-32 HH NYLOC SS	2
28	2772	CAP 8FNL-S	1
29	28855	HOUR METER 12VDC TST 180-1911	1
30	3864	FTG 12-12 MJ-MP 90	1
31	4581	NIPPLE 0.75X4.00 BRASS	1
32	51841	MOTOR HYD SHD60 & SHD43 1.93 CID	1
33	5290	WASHER #8 SAE FLAT	8
34	5480	VALVE CHECK 0.75 STANDARD	1
35	61792	MANIFOLD ASM SVRYT0-T2SAE 3000PSI ALUM BODY	1
36	65025	FTG 12-12 MFS-MFS BULKHEAD UNION	1
37	66331	TUBE ASM 0.50 BLKHEAD TO MANIFLD SHD 21-60 ZC	1

ITEM	PART	DESCRIPTION	QTY.
38	66332	TUBE ASM 0.50 MANIFLD TO MOTOR SHD60 ZC	1
39	66333	TUBE ASM 0.75 MANIFLD TO COOLER SHD60 ZC	1
40	66334	TUBE ASM 0.75 MOTOR TO COOLER SHD60 ZC	1
41	66335	TUBE ASM 0.75 COOLER TO BLKHEAD SHD60 ZC	1
42	66337	BASE WILDMT SHD43/60 STL SHROUD	1
43	66354	SHROUD ASM CPRSR SHD43/60	1
44	66991	PLATE AL 61792 MANIFOLD MOUNT	1
45	67510	TUBE ASM 0.75 AIR CPRSR TO BLKHEAD SHD60 ZC	1
46	73652	PLUG NICKEL PLATED BUTION 0.88	1
47	76364	WIRE HARNESS 30R/45R/65R CPRSR	1
48	77503	PANEL BULKHEAD 30P PC WHITE	1
49	78190	HOSE 0.38[200PSI]-6PL SHORT-6PL STRAIGHT-23.5CL	1
50	8276	FTG 4-2 MP-MP 90	1
51	8278	FTG 12-12 FP-MP W/ .125 FP SPL	1
52	B0682	BRKT COOLER MOUNT SHD60	1
53	C0081	CLAMP 0.50 BLK VINYL	1
54	C0863	SWITCH PRES COMPRESSOR	1
55	C0944	CAP SCR 0.38-16X1.75 HHGR5	2
56	C1129	COOLER OIL	1
57	C1180	FTG 8-12 MFS-MORB STRAIGHT	1
58	C2053	FTG 12-8 MORB-FORB STRAIGHT REDUCER	1
59	C3480	COUPG HYD CPRSR TAPER	1
60	C4570	CAP SCR 0.31-24X0.75 HH NF	1
61	C4779	COUPG SPIDER SUL 99 BLUE URETHANE	1
62	C4781	COUPLING LOVEJOY 5/8	1
63	C4794	FTG 12-12 HB-MAORB 45	2
64	C4909	FTG TEE SL LOK 8-S5OLO-S	1
65	C5616	CLAMP ROMEX 0.50	2
66	C5968	FTG 12-12 MFS-MAORB 90	4
67	C6021	CAP SCR 0.25-20X0.75 BTNHID SS	1
68	C6353	WASHER 0.38 FLAT GR8	12
69	C6359	FAN 12.00 PULL 12 VOLT	1
70	D0075	SCREW #6-32X2.75 RH HD MACHINE	2
71	D0076	NUT #6-32 HH NYLOC	2
72	D0525	FTG 12-12 MFS-FESS-MFS RUN TEE	1
73	D1318	FTG 8-8 MFS-MFS BULKHEAD UNION	1
74	D1345	FTG CPRSN 0.12NPT/0.25 TUBE	1
75	D1465	WASHER 0.31-0.178 THICK	1
76	new Square D copper tube		1

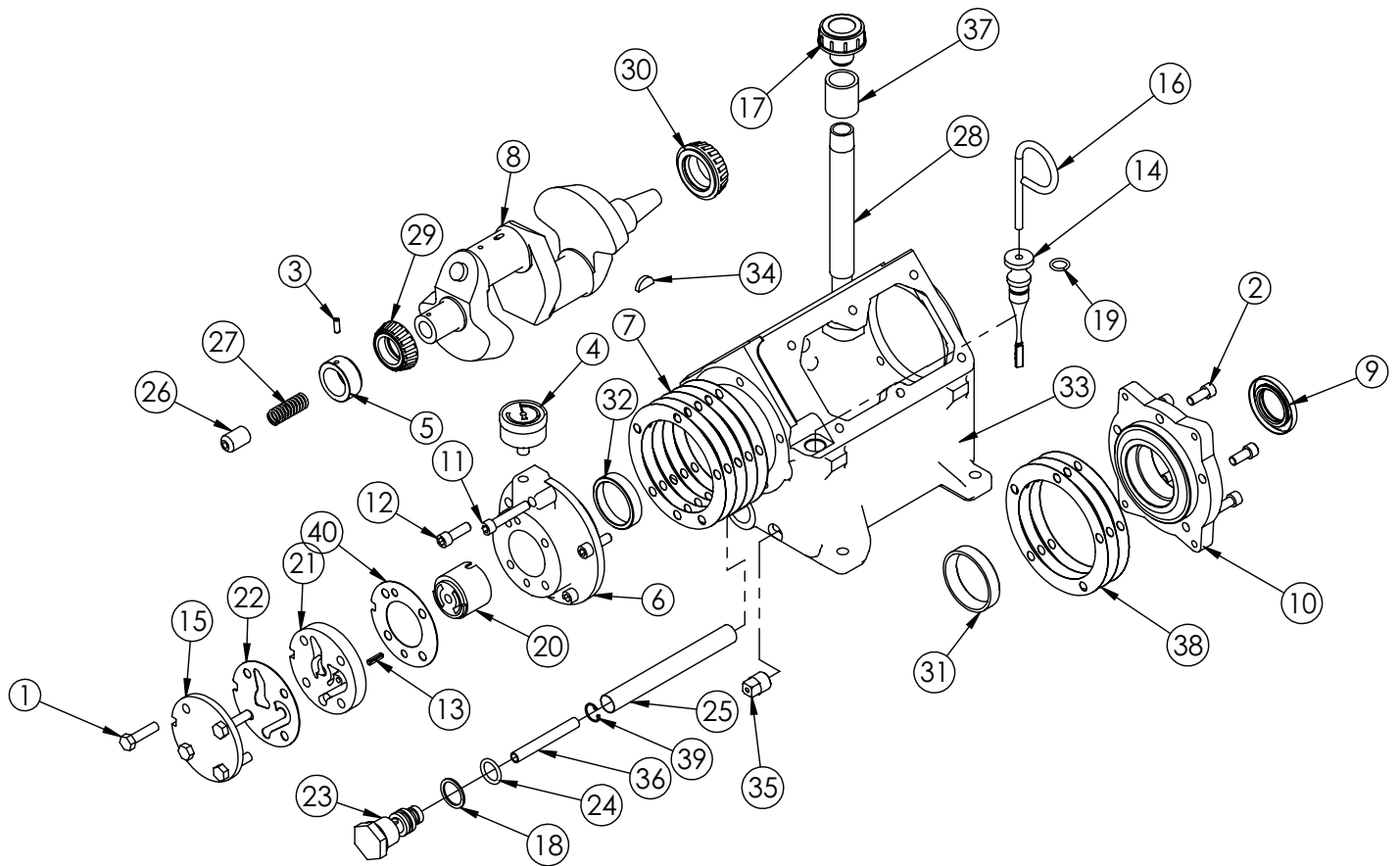
SUH-60 Compressor Assembly



COMPRESSOR ASSEMBLY

ITEM	PART	DESCRIPTION	QTY.
1	C4868	CPRSR V480CW16NP	1
2	22686	HANDLE DIPSTICK OIL CHECK V480	1
3	22839	DIPSTICK (V230/V360)	1
4	C0041	O'RING-112	1
5	C2279	FTG HOSE BARB 0.50 HOSE X 0.50 MNPT	2
6	C6235	FTG BRASS ELL 90 DEG A/C	2
7	25196	HOSE 0.63X12.00	1
8	C4665	HOSE CLAMP #8 SS	2
9	23878	NIPPLE 0.75X4.00 SS 304	1
10	D1266	FTG 0.75 ELBOW BRASS	1
11	D1264	FTG 0.75-CLOSE RED BRASS NIPPLE	1
12	5480	VALVE CHECK 0.75 STANDARD	1
13	D1267	FTG .75X90 DEG ST EL BRASS 44164	1
14	C4692	FTG 0.75 JIC-ML NPT 12CTX 90 DEG EL	1
15	C0863	SWITCH PRES COMPRESSOR	1
16	C5559	FTG ADAPT 1/8ML-1/4FM NPT 1404-2-4	1
17	C5576	FTG 0.25 HEX NIPPLE	1
18		SEE PAGE 22 FOR CLUTCH OPTIONS	1
19	D0240	FTG ELL 0.13 CPRSN TUBE TO NPT	1
20	25448	TUBE COPPER 0.25X9.00 SUH-60	1

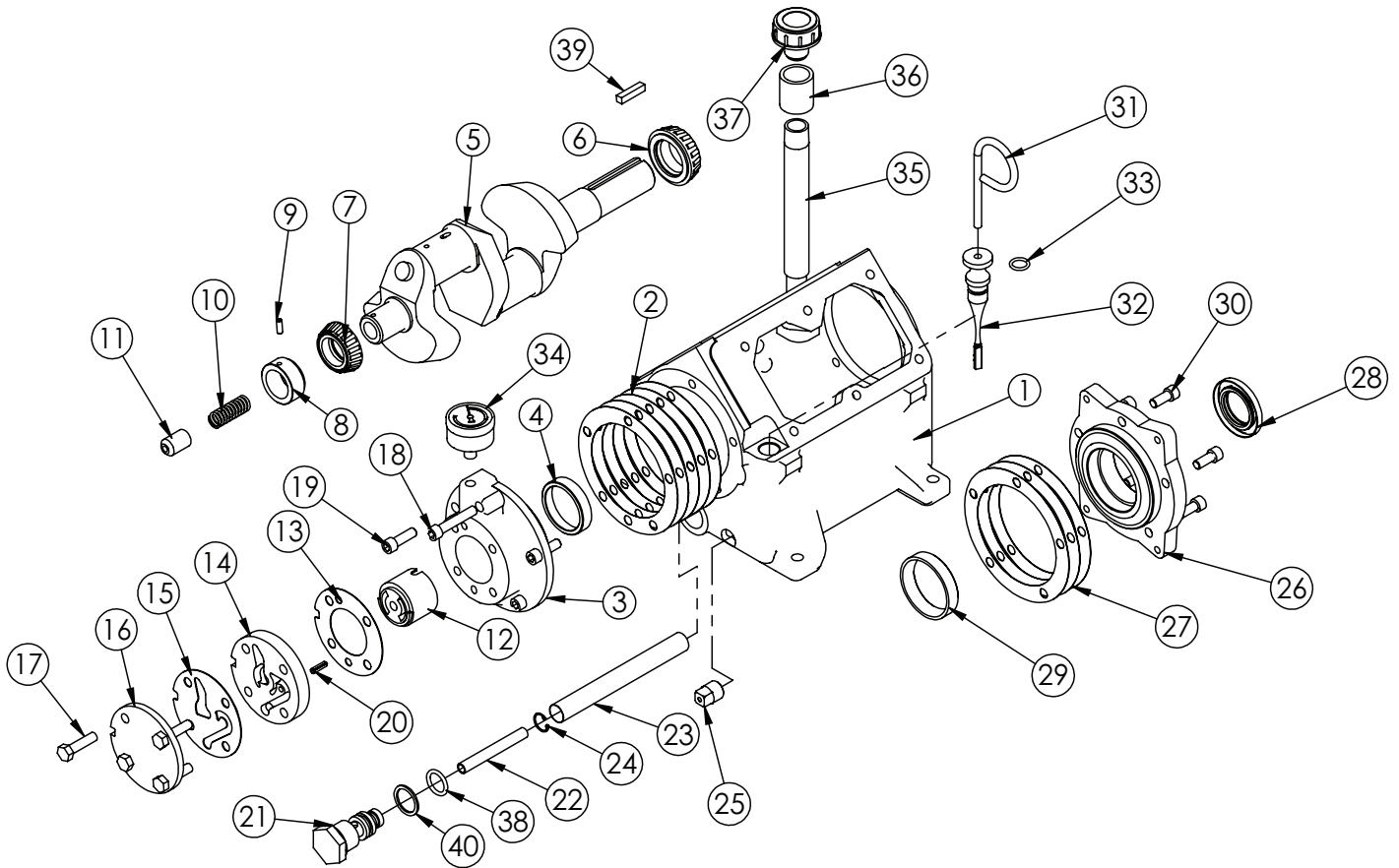
Crankcase Group (Tapered Shaft)



CRANKCASE GROUP

ITEM	PART	DESCRIPTION	QTY.	ITEM	PART	DESCRIPTION	QTY.	ITEM	PART	DESCRIPTION	QTY.
1	0485	CAP SCR 0.31-18X1.25 HHGR5	4	15	22626	PORT PLATE COVER	1	29	C0855	BEARING CONE	1
2	5813	CAP SCR 0.31-18X0.75 SH	5	16	22686	HANDLE DIPSTICK OIL CHECK V480	1	30	C0856	BEARING CONE LM67048	1
3	5817	ROLL PIN 0.19X.50	1	17	22868	BREATHER CPRSR .50NPT NY8	1	31	C1163	BEARING CUP (LM67010)	1
4	5819	GAUGE OIL PSI 1.5	1	18	50389	WASHER 0.885X1.115X0.064 COPPER	1	32	C1164	BEARING CUP (L44610)	1
5	5820	OIL PUMP DRIVE SLEEVE V480/V360/200	1	19	C0041	O'RING-112	1	33	C1174	CRANK CASE V480/360	1
6	5821	BEARING CARRIER OIL PUMP V360/V480	1	20	C0050	OIL PUMP	1	34	C4703	KEY WOODRUFF 5/32 X 3/4 #8	1
7	5822	GASKET BEARING CARRIER-V480 (.015)	5	21	C0052	PORT PLATE MACHINED	1	35	C4841	PLUG 0.38 NPT SQ HD BLK	1
8	5824	CRANKSHAFT V480 TAPER	1	22	C0054	PORT PLATE COVER GASKET (SMALL)	1	36	C5416	TUBE OIL INTAKE .38ODX3.00	1
9	5825	BEARING SEAL V480	1	23	C0055	OIL INTAKE PLUG	1	37	C5929	FTG 8-8 FP-FP CPLR STRAIGHT BLK	1
10	5826	BEARING CARRIER CLUTCH PLT V480	1	24	C0057	O'RING 2-115 FOR OIL PICKUP TUBE	1	38	C6271	FRONT PL GASKET	3
11	6031	SCREW 0.31-18X1.00 SHC	1	25	C0058	OIL INTAKE FILTER SCREEN	1	39	C6273	SNAP RING PISTON PIN N5000-62	1
12	6034	SCREW 0.31-18X1.00 SHC	4	26	C0059	OIL PUMP TRANSFER BUSHING	1	40	C6275	PORT PLATE GASKET	1
13	22209	ROLL PIN 0.19X.63	1	27	C0060	SPRING OIL PUMP	1				
14	22210	DIPSTICK OIL CHECK V480	1	28	C0062	BREATHER BODY	1				

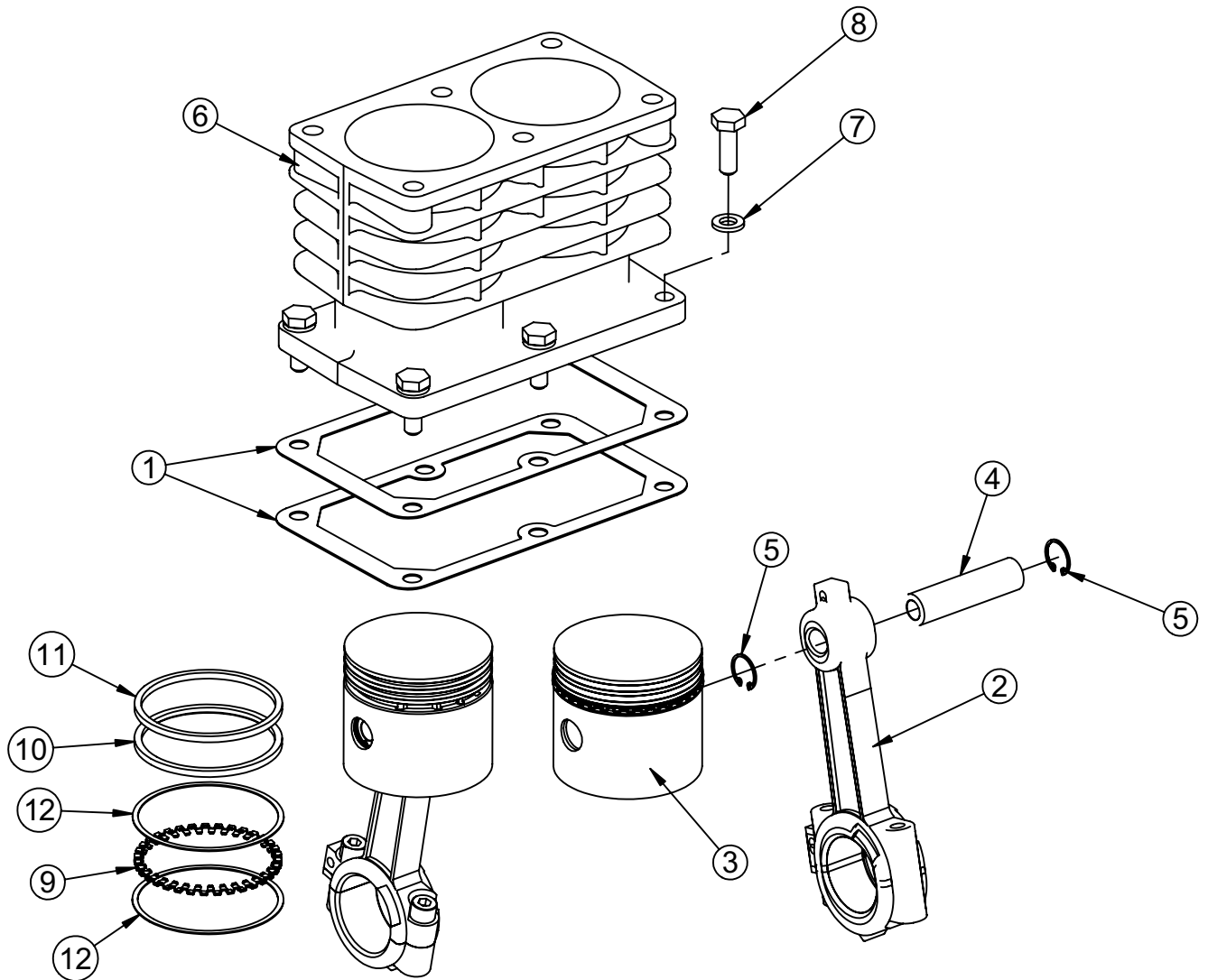
Crankcase Group (Straight Shaft)



CRANKCASE GROUP

ITEM	PART	DESCRIPTION	QTY.	ITEM	PART	DESCRIPTION	QTY.	ITEM	PART	DESCRIPTION	QTY.
1	C1174	CRANK CASE V480/360	1	15	C0054	PORT PLATE COVER GASKET (SMALL)	1	29	C1163	BEARING CUP (LM67010)	1
2	5822	GASKET BEARING CARRIER-V480 (.015)	5	16	22626	PORT PLATE COVER	1	30	5813	CAP SCR 0.31-18X0.75 SH	5
3	5821	BEARING CARRIER OIL PUMP V360/V480	1	17	0485	CAP SCR 0.31-18X1.25 HHGR5	4	31	22686	HANDLE DIPSTICK OIL CHECK V480	1
4	C1164	BEARING CUP (L44610)	1	18	6031	SCREW 0.31-18X1.00 SHC	1	32	22210	DIPSTICK OIL CHECK V480	1
5	22834	CRANKSHAFT V480 S	1	19	6034	SCREW 0.31-18X1.00 SHC	4	33	C0041	O-RING-112	1
6	C0856	BEARING CONE LM67048	1	20	22209	ROLL PIN 0.19X.63	1	34	5819	GAUGE OIL PSI 1.5	1
7	C0855	BEARING CONE	1	21	C0055	OIL INTAKE PLUG	1	35	C0062	BREATHER BODY	1
8	5820	OIL PUMP DRIVE SLEEVE V480/V360/200	1	22	C5416	TUBE OIL INTAKE .38ODX3.00	1	36	C5929	FTG 8-8 FP-FP CPLR STRAIGHT BLK	1
9	5817	ROLL PIN 0.19X.50	1	23	C0058	OIL INTAKE FILTER SCREEN	1	37	22868	BREATHER CPRSR .50NPT NY8	1
10	C0060	SPRING OIL PUMP	1	24	C6273	SNAP RING PISTON PIN N5000-62	1	38	C0057	O-RING 2-115 FOR OIL PICKUP TUBE	1
11	C0059	OIL PUMP TRANSFER BUSHING	1	25	C4841	PLUG 0.38 NPT SQ HD BLK	1	39	23047	KEY FLYWHEEL 1/4	1
12	C0050	OIL PUMP	1	26	5826	BEARING CARRIER CLUTCH PLT V480	1	40	50389	WASHER 0.885X1.115X0.064 COPPER	1
13	C6275	PORT PLATE GASKET	1	27	C6271	FRONT PL GASKET	3				
14	C0052	PORT PLATE MACHINED	1	28	5825	BEARING SEAL V480	1				

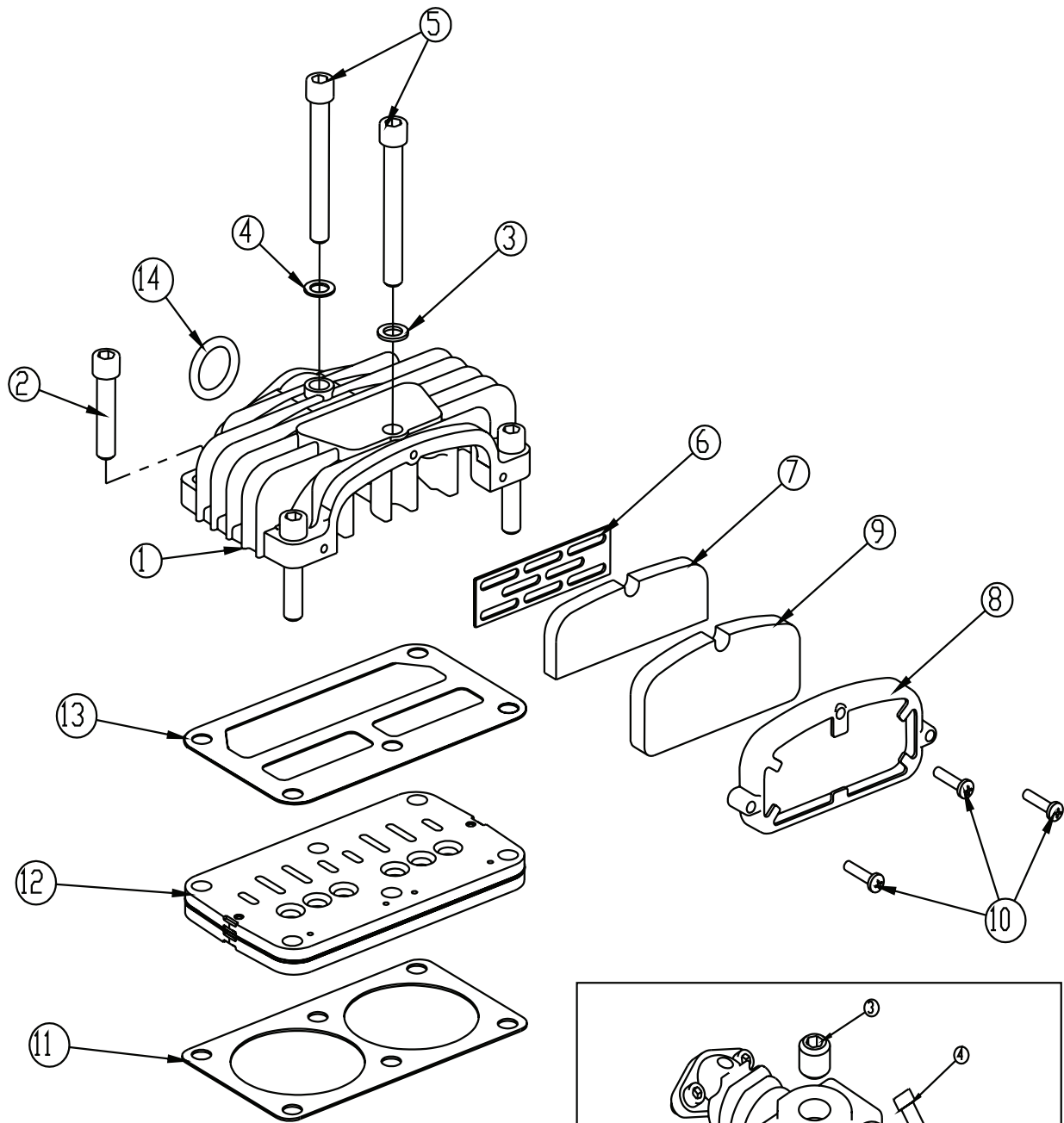
Cylinder Group



CYLINDER GROUP

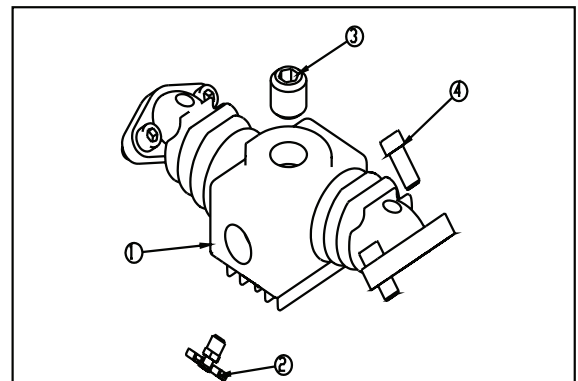
ITEM	PART	DESCRIPTION	QTY.
1	C0047	CYLINDER GASKET	2
2	C6364	CONNECTING ROD 200/V480 O/S	2
3	5767	PISTON 200/V480	2
4	C6367	PISTON PIN 200/V480	2
5	C6273	SNAP RING PISTON PIN N5000-62	4
6	C6360	CYLINDER V480 FINISHED O/S	1
7	0522	WASHER 0.31 LOCK	6
8	C0922	CAP SCR 0.31-18X1.00 HHGR5	6
9	5827	RING OIL V480/200 FLEX DIVIDER	2
10	32931	RING SCRAPER V480/200 H#48638	2
11	32930	RING CPRSN V480/200 BARREL H#38347	2
12	36368	RING OIL V480/200 RING RAIL	4

Head Group



HEAD GROUP

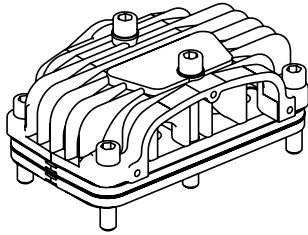
ITEM	PART	DESCRIPTION	QTY.
1	5808	HEAD A/C ALUM V480 O/S	1
2	C1586	CAP SCR 0.38-16X1.75 SH HEAD BOLT	4
3	C0040	WASHER HD BOLT STL	1
4	5828	WASHER LONG HD BOLT (BRASS)	1
5	C1582	BOLT 3.00 HEAD SACKED	2
6	C0297	FILTER SCREEN	1
7	C0715	FILTER FOAM	1
8	C0294	FILTER RETAINER	1
9	C0296	FILTER FOAM	1
10	C0300	SCREW #10-32X0.88 NF	3
11	D0887	GASKET VALVE PLATE 200/480	1
12	24103	VALVE PLATE SUB ASM O/S	1
13	C0310	GASKET HEAD 143/230/360/480	1
14	C0291	O'RING-214 VITON 9009-75	1



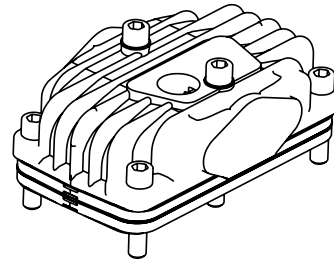
Manifold Discharge

ITEM	PART	DESCRIPTION	QTY.
1	D0846	MANIFOLD V480 DISCHARGE O/S	1
2	5797	DRAIN COCK-V480	1
3	6000	PLUG 0.75 NPT SQ HD CS BLK	1
4	C1166	0.44 X 1.00 PULSATION TANK BOLT	4

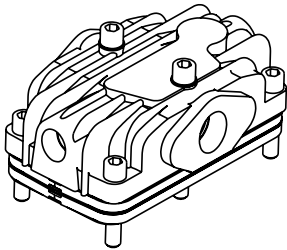
Head Options



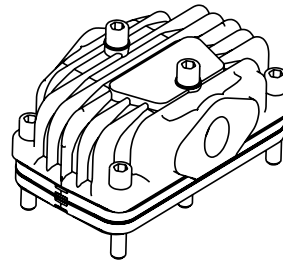
#5808
Aluminum Air Cooled
Imbedded Filter & 3/4"
Threaded NPT Discharge



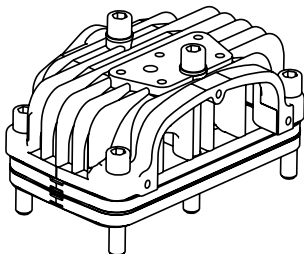
#15195
Cast Iron Air Cooled
3/4" Threaded Intake Port
on Top of Head with
3/4" Discharge Port



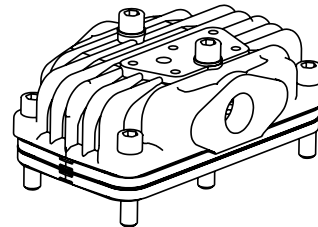
#C1632
Aluminum Water Cooled
3/4" Threaded Inlet & 3/4"
Threaded NPT Discharge



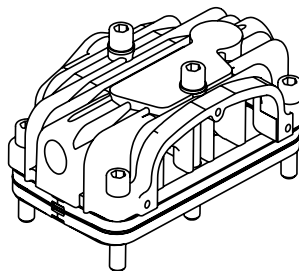
#3897
Cast Iron Air Cooled
3/4" Threaded Inlet & 3/4"
Threaded NPT Discharge



#22996
Cast Iron Air Cooled
Imbedded Filter & 3/4"
Threaded NPT Discharge
with Head Unloader Ports

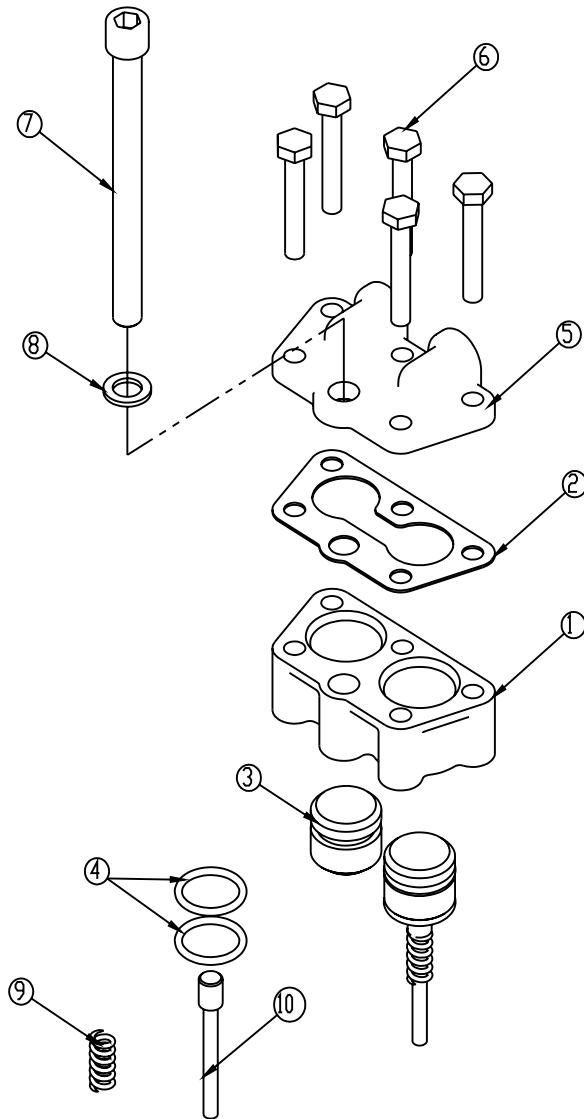


#23039
Cast Iron Air Cooled
3/4" Threaded Inlet & 3/4"
Threaded NPT Discharge
with Head Unloader Ports



#C1631
Aluminum Water Cooled
Imbedded Filter & 3/4"
Threaded NPT Discharge

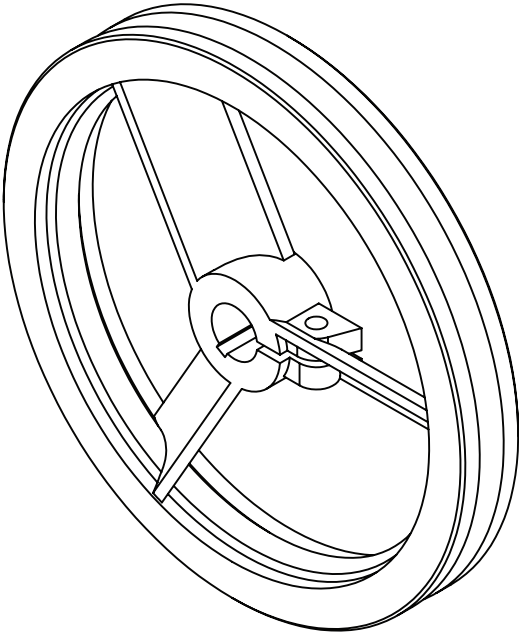
Optional Head Unloader



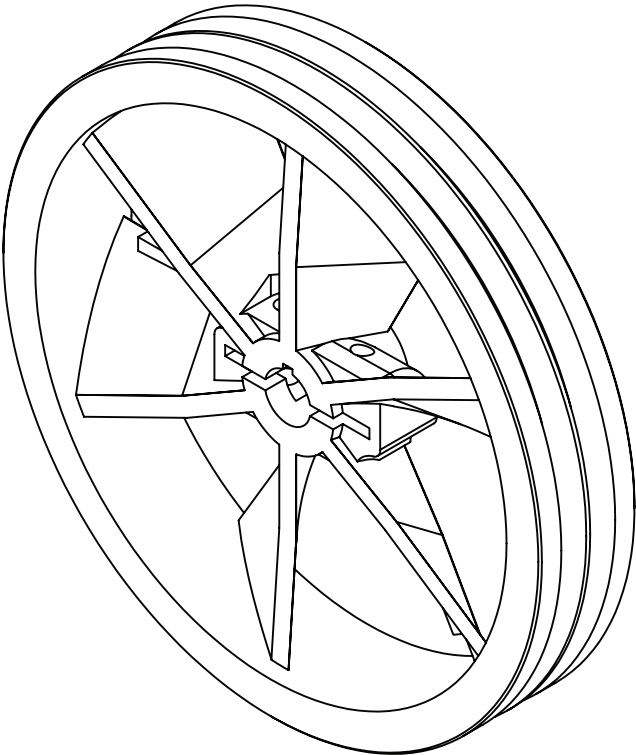
PN 23200

ITEM	PART	DESCRIPTION	QTY.	ITEM	PART	DESCRIPTION	QTY.
1	22591	BODY HEAD UNLOADER CPRSR	1	6	0220	CAP SCR 0.25-20 X 1.50 HHGR5	5
2	22599	GASKET UNLOADER	1	7	22596	CAP SCR 0.38-16X4.00 SH HEAD BOLT	1
3	22593	PISTON HEAD UNLOADER CPRSR	2	8	C0040	WASHER HD BOLT STL	1
4	22598	O'RING 2-116 HEAD UNLOADER CPRSR	4	9	22597	SPRING PLUNGER PIN UNLOADER CPRSR	2
5	22592	COVER HEAD UNLOADER CPRSR	1	10	22594	PIN PLUNGER HEAD UNLOADER CPRSR	2

Flywheel Options

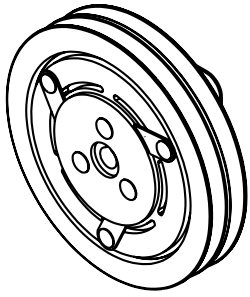


22997
12" - B GROOVE

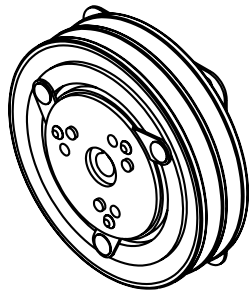


22838
14" - DUAL GROOVE

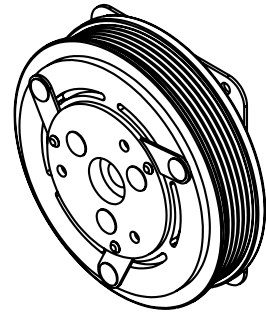
Clutch Options



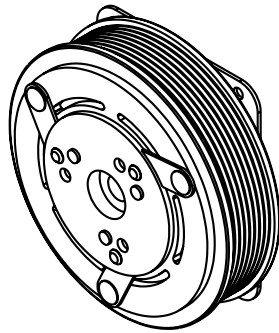
C4705
7" DUAL V



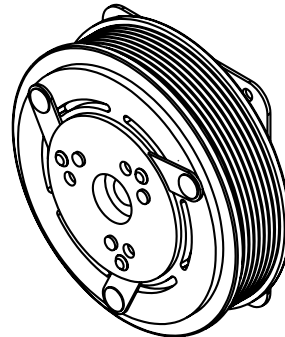
C4704
6" DUAL V



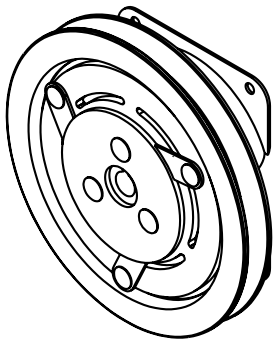
C4723
6" - 8 GROOVE
SERPENTINE



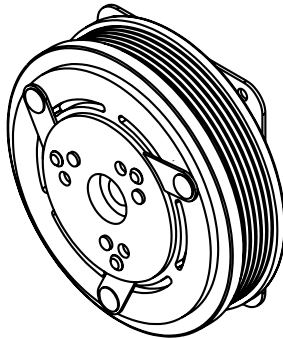
8198
6" - 8 GROOVE
24V SERPENTINE



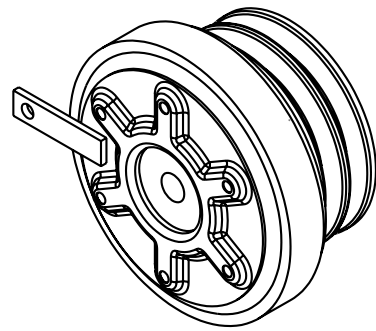
5793
6" - 8 GROOVE
12V SERPENTINE



C4775
7" SINGLE V



5774
6" - 6 GROOVE
12V SERPENTINE



C4762
STRAIGHT BORE

Chapter 4 - Replacement Parts

Assembly Items		
Part Number	Description	Kit Contents (If Applicable)
5380	Overhaul Kit	Gasket Set (Qty 1), Ring Set (Qty 1), Valve Plate (Qty 2), O-Ring (Qty 2), Bearing Oil Seal (Qty 1), Oil (1 Quart), Inner Filter (Qty 2), Outer Filter (Qty 2)
C6363	Gasket Set Complete	
C6365	Ring Set Complete	
D1489	Valve Plate Assembly	Valve Plate (Qty 1), Top Head Gasket (Qty 1), Bottom Head Gasket (Qty 1)
23873	Crankshaft with Bearings - Straight Shaft	
23874	Crankshaft with Bearings - Tapered Shaft	

Maintenance Items		
Part Number	Description	Kit Contents (If Applicable)
14509	Service Kit w/Canister Filter	Canister Filter Element (Qty 1), Compressor Oil (1 Quart), Hydraulic Oil Filter (Qty 1)
32891	Service Kit w/Foam Filters	Inner Foam Filter Element (Qty 2), Outer Foam Filter Element (Qty 2), Compressor Oil (1 Quart), Hydraulic Oil Filter (Qty 1)
4562	Canister Filter Element Only	
13529	Canister Filter Assembly	
C0297	Embedded Filter Screen	
C0296	Embedded Filter Foam - Outer	
C0715	Embedded Filter Foam - Inner	
C0294	Embedded Filter Retainer	
C0087	Synthetic Compressor Oil (Quart)	
7259	Synthetic Compressor Oil (Case of 12 Quarts)	



Subject to Change without Notification.
© 2023 Stellar Industries Inc.