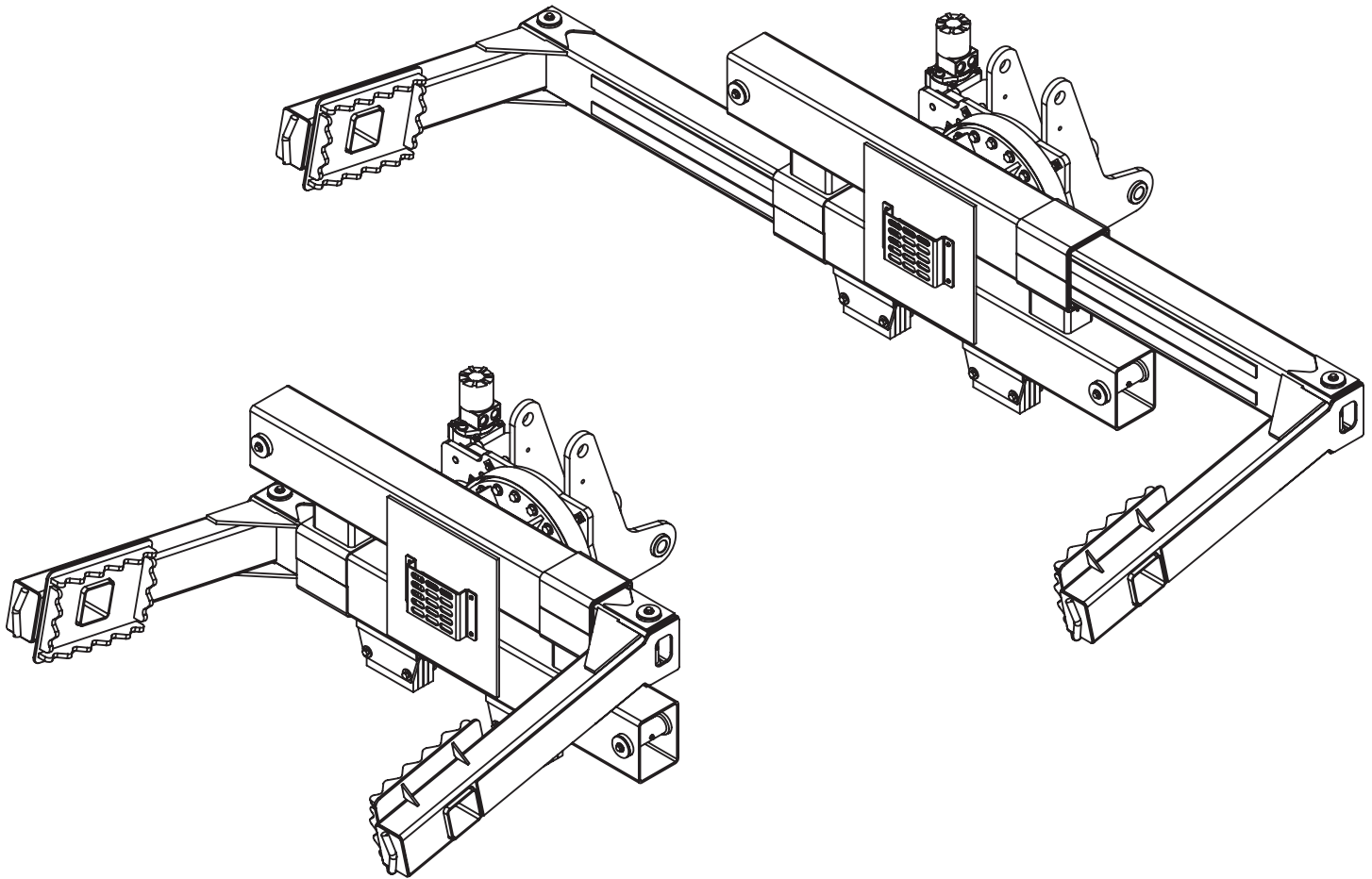




TireMan 4110 Owner's Manual

Installation • Assembly Drawings • Parts



Notice: A copy of this manual must remain with the equipment at all times.
For a printable download copy, please visit: www.stellarindustries.com

Stellar Industries, Inc.

190 State Street

PO Box 169

Garner, IA 50438

800-321-3741

Fax: 641-923-2811

www.stellarindustries.com

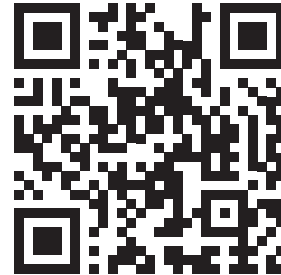
Subject to Change without Notification.
© 2022 Stellar Industries, Inc.

Rev 1
PN 90308

P65 Warning / Cold Weather Notice

WARNING

Operating, maintaining, and servicing a Stellar product may expose you to chemicals including, but not limited to, engine exhaust, carbon monoxide, phthalates, and lead. These chemicals are known to the State of California to cause cancer and birth defects (or other reproductive harm). To keep your exposure to a minimum, be sure to avoid breathing exhaust and service your Stellar product in a well-ventilated area while wearing gloves or washing your hands frequently. For more information, go to www.P65Warnings.ca.gov/passenger-vehicle.



www.p65/warning.ca.gov

NOTICE

Cold Weather Performance

Although clear data on cold weather performance from every steel manufacturer is not available for all types and thicknesses of steel, Stellar Industries is confident that the weldments on our products will operate to 100% of their intended purpose to temperatures down to -40° F / C.

It is recommended if Stellar manufactured equipment needs to be used in temperatures below -40° F / C, the operator should pull the unit into a climate-controlled area and allow the weldments to warm up to and then maintain a temperature above this level.

Table of Contents

- Introduction iv
- Model TM4110 Specifications 1
- TM4110 Dimensional Layout 2
- TM4110 Dimensional Layout (Continued) 3
- General Installation 4
 - Installer Notice 4
 - Torque Data Chart 5
- Hydraulic Installation 6
- Hydraulic Pressure Settings 7
- Face Seal/O-Ring Size Chart 7
- Hydraulic Kit w/Fixed Pads - PN 67411 8
- Hydraulic Kit w/Rotating Pads - PN 63809 9
- Decal Placement - PN 35432 10
- TM4110 Standard Breakdown - PN 61223 11
- TM4110 Standard Bill - PN 61223 12
- TM4110 w/Rotation Pads Breakdown - PN 61386 13
- TM4110 w/Rotation Pads Bill - PN 61386 14
- Mounting Kit - PN 61401 15
- Optional Pad Extensions - PN 35434 16
- Optional Pad Extensions - PN 58288 17
- Optional Pad Extensions - PN 81015 18

Introduction

A copy of this manual is provided with every tire manipulator and can be found in the hard plastic manual case that is installed on the chassis. A copy of this manual shall remain with the tire manipulator at all times.

Throughout the manual, three signal words will be used to bring attention to important items:

NOTICE

A NOTICE signal word indicates a practice not related to physical injury.

⚠ WARNING

A WARNING signal word indicates a hazardous situation which, if not avoided, could result in death or serious injury.

⚠ DANGER

A DANGER signal word indicates a hazardous situation which, if not avoided, will result in death or serious injury.

Information contained within this manual does not cover operation, maintenance, or troubleshooting. Please refer to the Large OTR Crane Manual for details on these items.

This manual is not binding. Stellar Industries, Inc. reserves the right to change, at any time, any or all of the items, components, and parts deemed necessary for product improvement or commercial/production purposes. This right is kept with no requirement or obligation for immediate mandatory updating of this manual.

In closing:

If more information is required or technical assistance is needed, or if you feel that any part of this manual is unclear or incorrect, please contact the Stellar Customer Service Department by phone at 800-321-3741 or email at service@stellarindustries.com.

**For Technical Questions, Information, Parts, or Warranty, Call Toll-Free at
800-321-3741**

Hours: Monday - Friday, 8:00 a.m. - 5:00 p.m. CST

Or email at the following addresses:

Technical Questions, and Information

service@stellarindustries.com

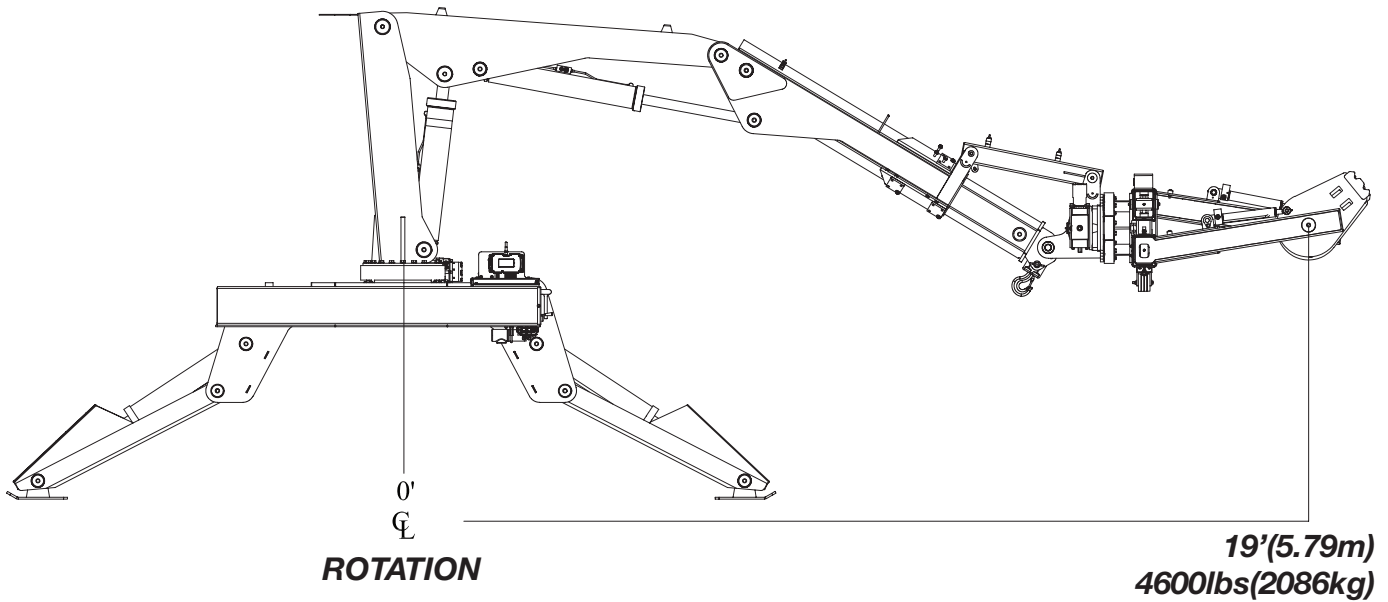
Order Parts

parts@stellarindustries.com

Warranty Information

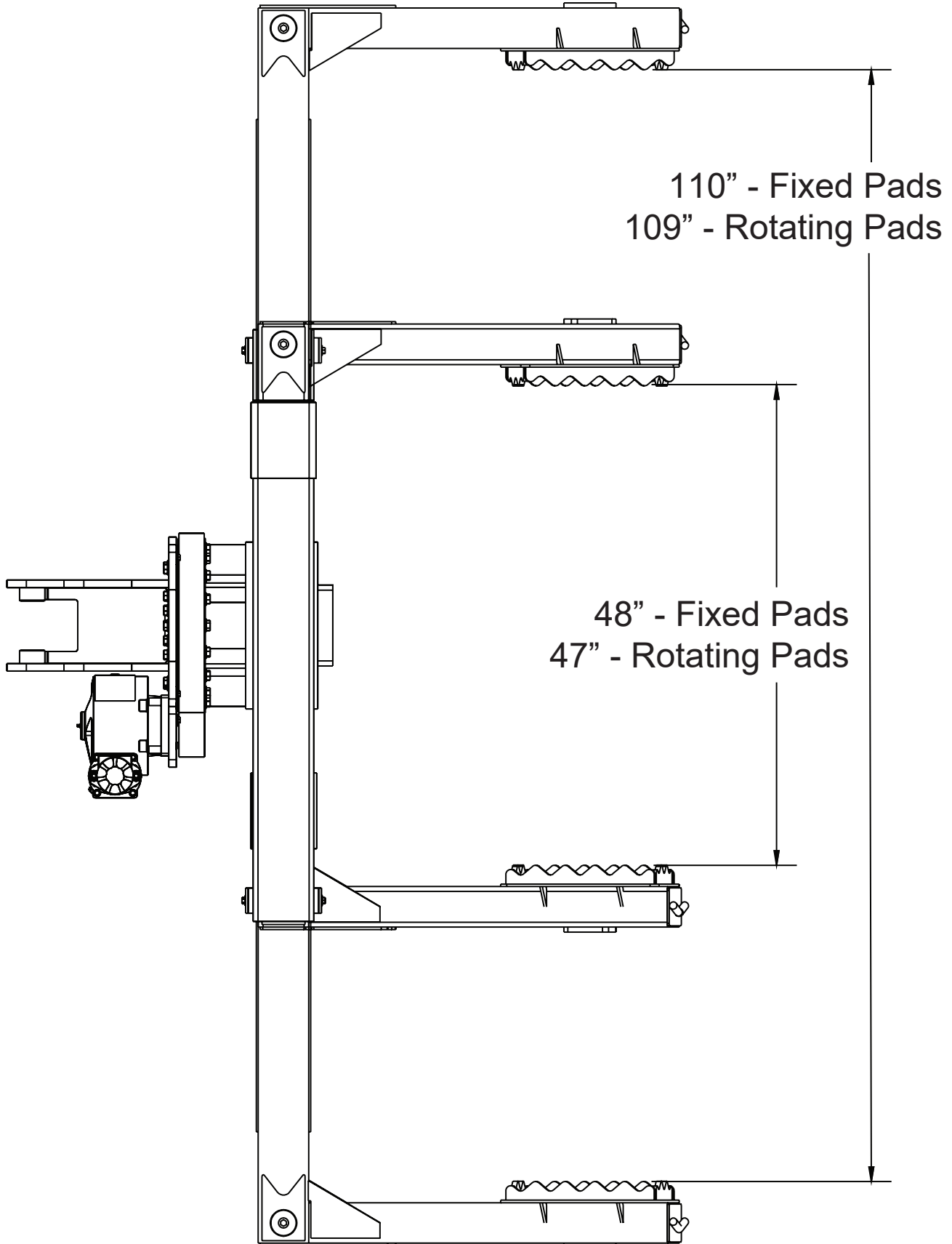
warranty@stellarindustries.com

Model TM4110 Specifications



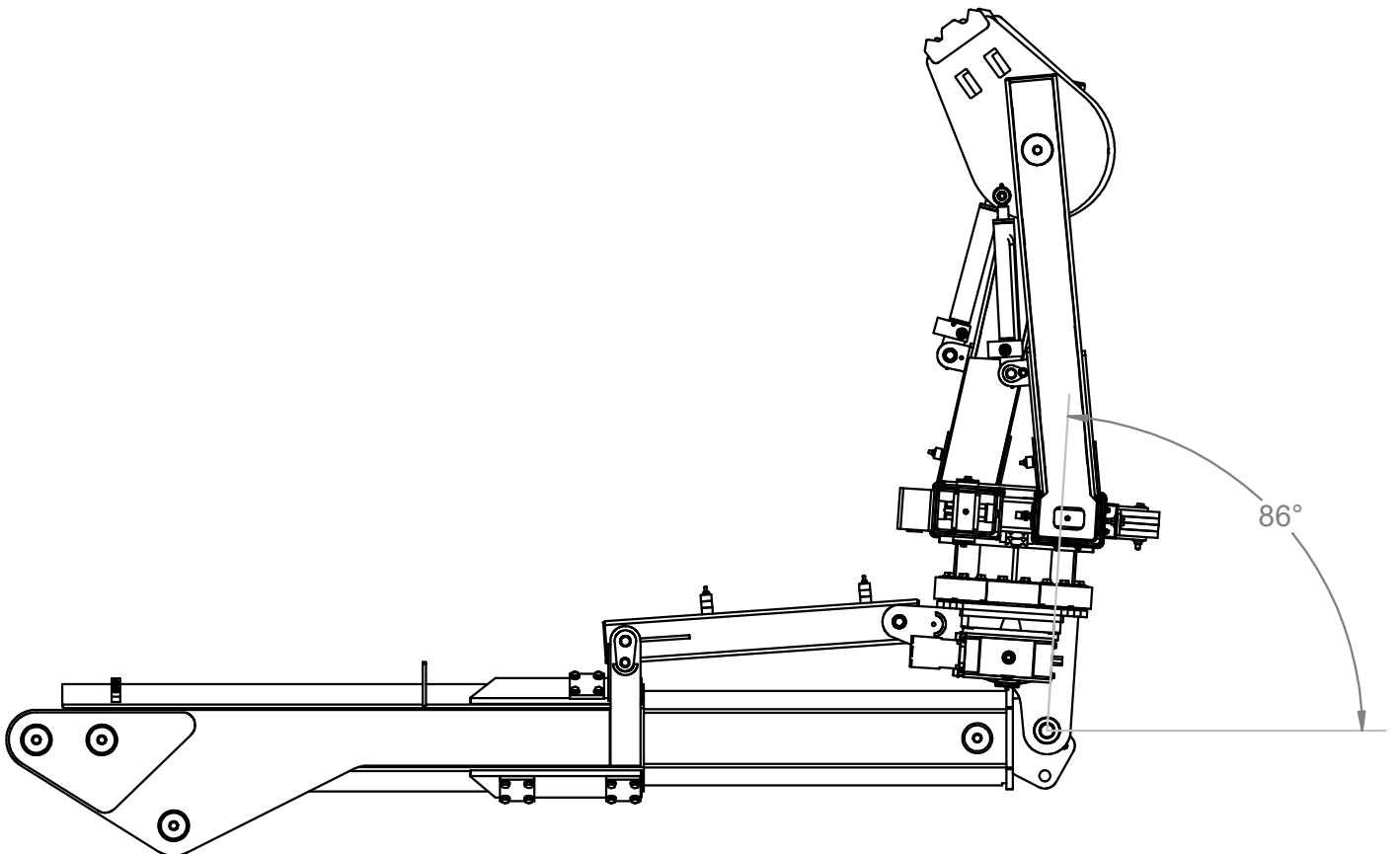
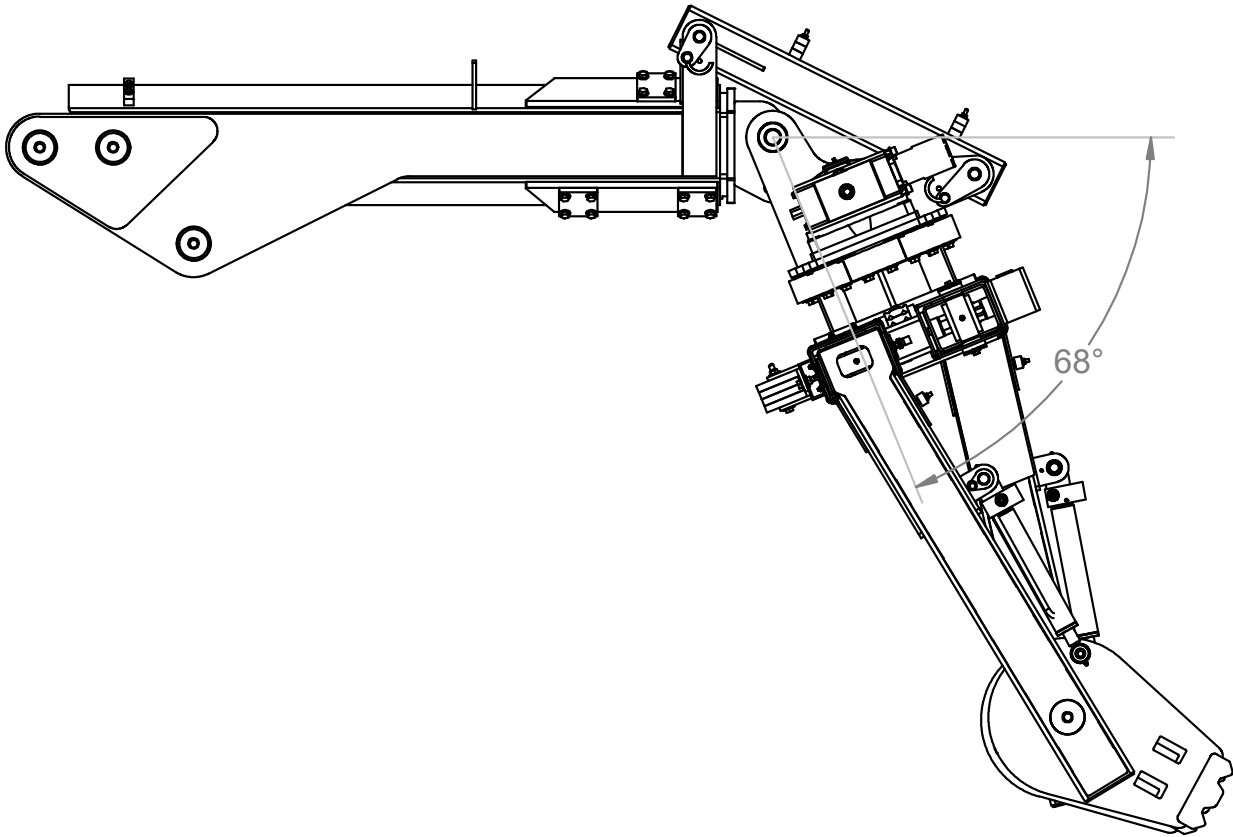
Capacity:	4,600 lbs @ 19 ft (2,086 kg @ 5.79m)
Clamping Span:	Fixed Pads - 48" to 110" (121.92 cm to 279.4 cm)
	Rotating Pads - 47" to 109" (119.38 cm to 276.86 cm)
Optional Pad Extension:	29" (73.66 cm) arms closed
Clamp Cylinders:	2.5" (6.35 cm) bore with pilot operated check valves
Tilt Cylinder:	Provided by crane extension boom
Body Rotation:	285° power
Rotation System:	Rotation bearing and worm-driven gear box
Clamping Pad Rotation:	Optional: 90° Rotating Pads
TireMan Tilt:	+86° to -68°
Hydraulic Controls:	Incorporated with the crane controls
Approximate Shipping Weight:	1,550 lbs (703 kg) Standard
	1,825 lbs (827 kg) With 90° Rotating Pad

TM4110 Dimensional Layout



TM4110 Dimensional Layout (Continued)

TIREMAN TILT



General Installation

This chapter is designed to serve as a general guide for the installation of a Stellar TM4110 on a Stellar Service Crane. Each installation is considered unique so certain portions of this chapter may or may not apply to your direct application. If a question should arise during the installation process, please contact Stellar Customer Service at (800) 321 3741.

This crane is designed for use with a Stellar Service Crane installed on a vehicle that meets the minimum chassis requirements of the crane. It is the installer's responsibility to assure that the unit is mounted on a platform that will support the maximum crane rating of this crane.

⚠ WARNING Do not install this crane/manipulator on a body not capable of handling the loads imposed on it. Failure to do so may result in serious injury or death.

Installer Notice

According to Federal Law (49 cfr part 571), each final-stage manufacturer shall complete the vehicle in such a manner that it conforms to the standards in effect on the date of manufacture of the incomplete vehicle, the date of final completion, or a date between those two dates. This requirement shall, however, be superseded by any conflicting provisions of a standard that applies by its terms to vehicles manufactured in two or more stages.

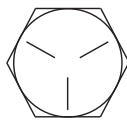
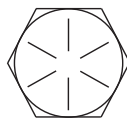
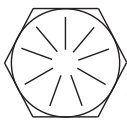
Therefore, the installer of Stellar® Cranes and Bodies is considered one of the manufacturers of the vehicle. As such a manufacturer, the installer is responsible for compliance with all applicable federal and state regulations. They are required to certify that the vehicle is in compliance with the Federal Motor Vehicle Safety Standards and other regulations issued under the National Traffic and Motor Vehicle Safety Act.

Please reference the Code of Federal Regulations, title 49 - Transportation, Volume 5 (400-999), for further information, or visit <http://www.gpoaccess.gov/nara/index.html> for the full text of Code of Federal Regulations.

Torque Data Chart

When using the torque data in the chart, the following rules should be observed:

- Bolt manufacturer's particular specifications should be consulted when provided.
- Flat washers of equal strength must be used.
- All torque measurements are given in foot-pounds. To convert to inch-pounds, multiply by 12.
- Torque values specified are for bolts with residual oils or no special lubricants applied.
- Torque values for socket-head capscrews are the same as for Grade 8 capscrews.

		GRADE 5		GRADE 8		GRADE 9
						
Size (DIA-TPI)	Bolt DIA (Inches)	Plain (Ft-Lb)	Plated (Ft-Lb)	Plain (Ft-Lb)	Plated (Ft-Lb)	Plated (Ft-Lb)
5/16-18	0.3125	17	13	25	18	22
3/8-16	0.3750	31	23	44	33	39
7/16-14	0.4375	49	37	70	52	63
1/2-13	0.5000	75	57	105	80	96
9/16-12	0.5625	110	82	155	115	139
5/8-11	0.6250	150	115	220	160	192
3/4-10	0.7500	265	200	375	280	340
7/8-9	0.8750	395	295	605	455	549
1-8	1.000	590	445	910	680	823
1 1/8-7	1.1250	795	595	1290	965	1167
1 1/4-7	1.2500	1120	840	1815	1360	1646
1 3/8-6	1.3750	1470	1100	2380	1780	2158
1 1/2-6	1.500	1950	1460	3160	2370	2865

- **NOTICE** Do not use these values if a different torque value or tightening procedure is given for a specific application. Torque values listed are for general use only. Check tightness of fasteners periodically.
- Shear bolts are designed to fail under predetermined loads. Always replace shear bolts with identical grade.
- Fasteners should be replaced with the same or higher grade. If higher grade fasteners are used, these should only be tightened to the strength of the original.
- Tighten plastic insert or crimped steel-type lock nuts to approximately 110 percent of the dry torque values shown in the chart below, applied to the nut, not to the bolt head. Tighten toothed or serrated-type lock nuts to the full torque value. *Note: "Lubricated" means coated with a lubricant such as engine oil, or fasteners with phosphate and oil coatings. "Dry" means plain or zinc plated without lubrication. Tighten lubricated bolts to approximately 80% of dry bolts.*

Hydraulic Installation

Never modify or alter any of the equipment, whether mechanical, electrical, or hydraulic, without Stellar Industries' approval.

⚠ WARNING Do not touch or grab any hoses that could be under pressure. Release system pressure before attempting to make adjustments or repairs.

Do not attempt service or repair when PTO is engaged.

Disassemble and assemble hydraulic components on a clean surface.

Clean all metal parts in a nonflammable cleaning fluid. Then lubricate all components to aid in assembly.

⚠ WARNING Hydraulic fluid expands when heated. This raises the pressure in an unventilated tank. Release the tank pressure before removing the cap completely. Failure to do so may cause the oil to shoot out of the tank very rapidly and cause severe burns.

⚠ WARNING Do not rely on the hydraulic fluid to support the boom or crane. If hydraulic fluid escapes, the boom or crane can fall immediately. Make sure the ground or blocking is supporting the boom before performing any maintenance or repair.

NOTICE Contaminants in a hydraulic system affect operation and will result in serious damage to the system components. Dirty hydraulic systems are a major cause of component failures.

If evidence of foreign particles is found in the hydraulic system, flush the system.

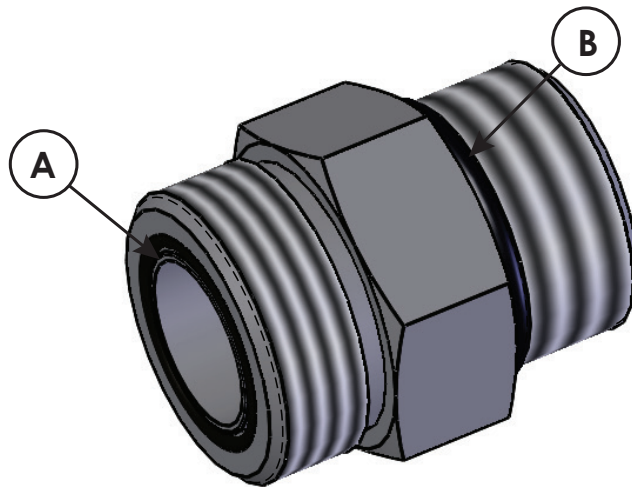
When installing metal hydraulic tubes, tighten all fittings finger tight. Then, in order, tighten the fittings at the rigid end, the adjustable end, and the mounting brackets. After tubes are mounted, install the hoses. Connect both ends of the hose with all fittings finger tight. Position the hose so it does not rub the machine or another hose and has a minimum of bending and twisting. Tighten fittings in both couplings.

Due to manufacturing methods, there is a natural curvature to a hydraulic hose. The hose should be installed so any bend is with this curvature.

Hydraulic Pressure Settings

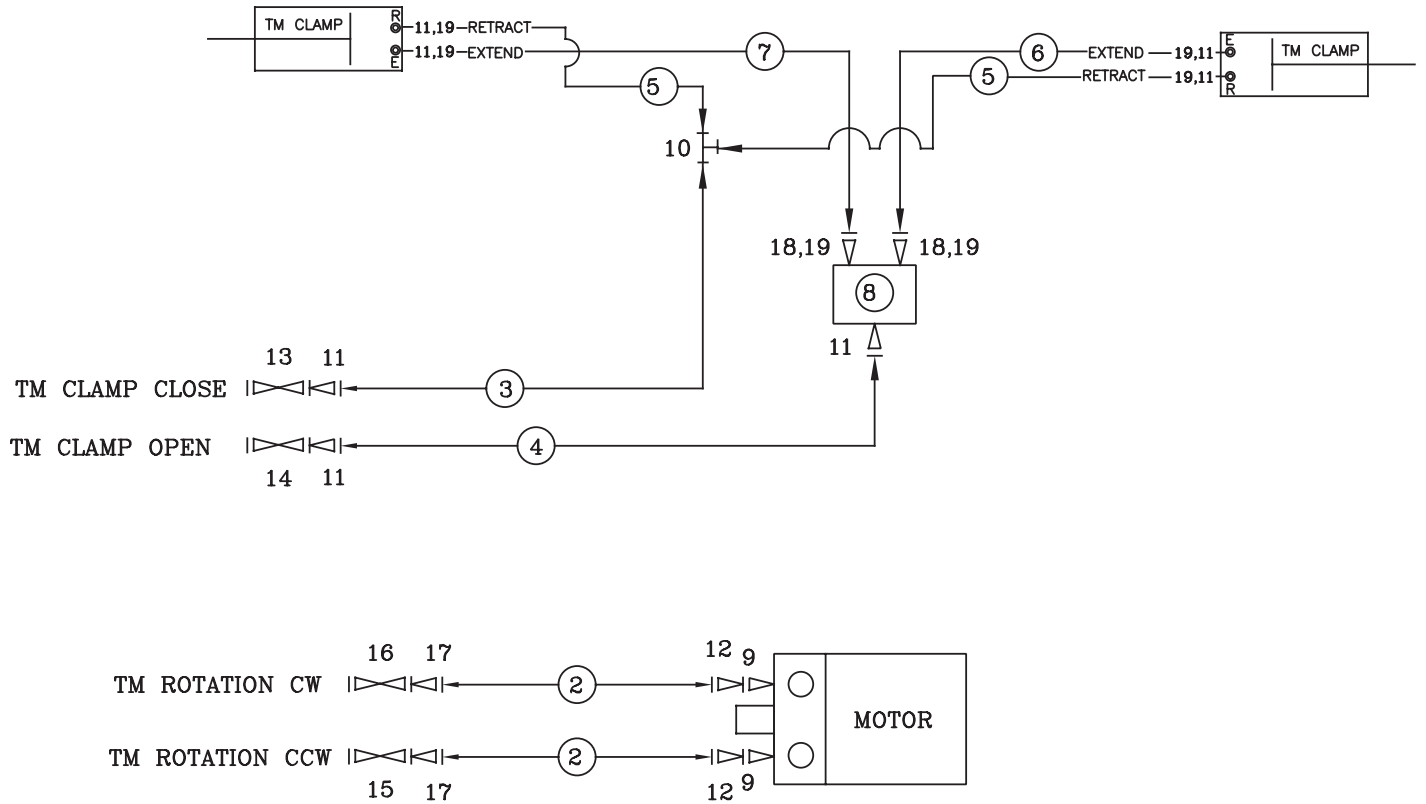
Main Relief 3200 psi			
		Pressure (psi)	
Function	Flow (gpm)	Extend	Retract
<i>Inner</i>	10.6	3000	3000
<i>Outer</i>	10.6	3000	3000
<i>Extension</i>	6.6	3000	3000
<i>Rotation</i>	6.6	1700	1700
<i>TM Rot</i>	6.6	2500	2500
<i>TM Pad Rot</i>	6.6	3000	3000
<i>TM Clamp</i>	6.6	3000	3000

Face Seal/O-Ring Size Chart



Hose Size	Fitting Size	Face Seal (A) Stellar® PN	O-ring Boss (B) Stellar® PN
1/4"	#4	C2027	D1245
3/8"	#6	C2028	D1246
1/2"	#8	C2029	D1247
5/8"	#10	32223	D1248
3/4"	#12	D1244	D1249
1"	#16		D1250

Hydraulic Kit w/Fixed Pads - PN 67411

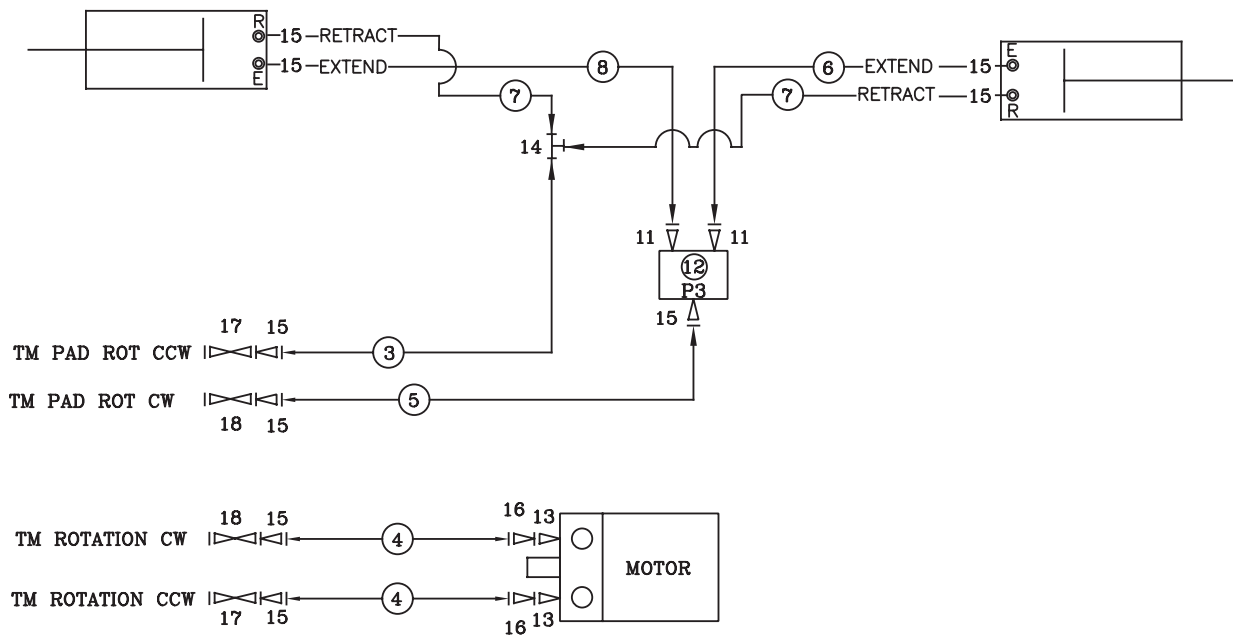
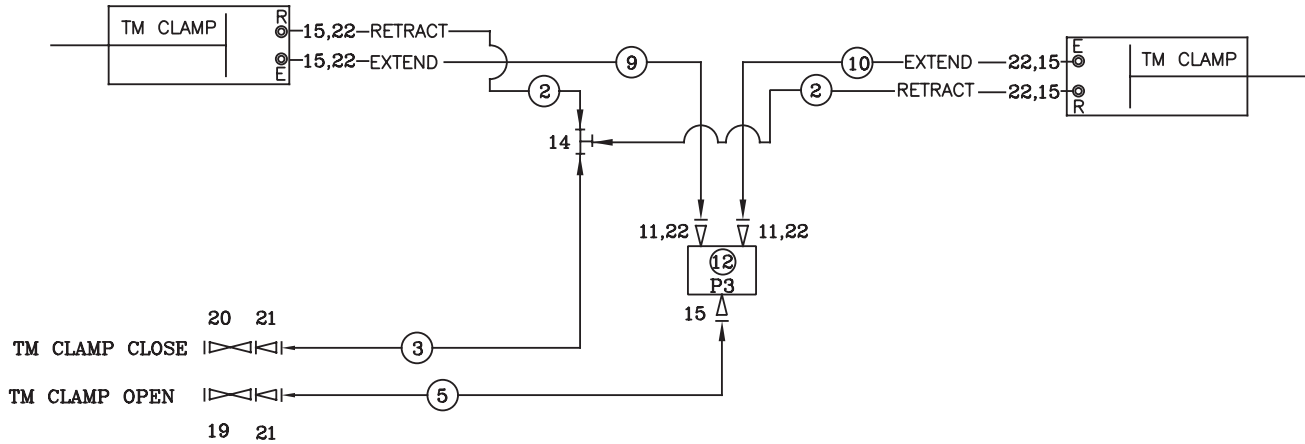


PN 67411

20	53479	LOOM 1.00 SPIRAL WRAP POLYETHYLENE	4
19	D1314	FTG 4-4 MFS-FFSS 90	6
18	3338	FTG 4-6 MFS-MAORB 90	2
17	12160	FTG 4-8 MFS-MORB STRAIGHT	2
16	13557	QUICK COUPLER 2FFN38-12SAE-M	1
15	13556	QUICK COUPLER 2FFN38-12SAE-F	1
14	13555	QUICK COUPLER 2FFI14-38SAE-M	1
13	13554	QUICK COUPLER 2FFI14-38SAE-F	1
12	D1190	FTG 4-6 MFS-MAORB 45	2
11	C4922	FTG 4-6 MFS-MORB STRAIGHT	7
10	7354	FTG 4-4-4 MFS-MFS-MFS TEE	1
09	C1111	FTG 10-6 MORB-FORB STRAIGHT REDUCER	2
08	35111	VALVE COMB DIV FD10-44-6T-N-44	1
07	52615	HOSE-HYD .25 X 50	1ref
06	83421	HOSE-HYD .25 X 26	1ref
05	63806	HOSE-HYD .25 X 38	2ref
04	24518	HOSE-HYD .25 X 88	1ref
03	52610	HOSE-HYD .25 X 85	1ref
02	63805	HOSE-HYD .25 X 70	2ref
01	67410	HOSE KIT, TM4110(incl:2-7)	1
ITEM	PART No.	DESCRIPTION	QTY

USE SPIRAL HOSE WRAP (53479) OVER HOSES THRU BODY ROTATION AREA

Hydraulic Kit w/Rotating Pads - PN 63809



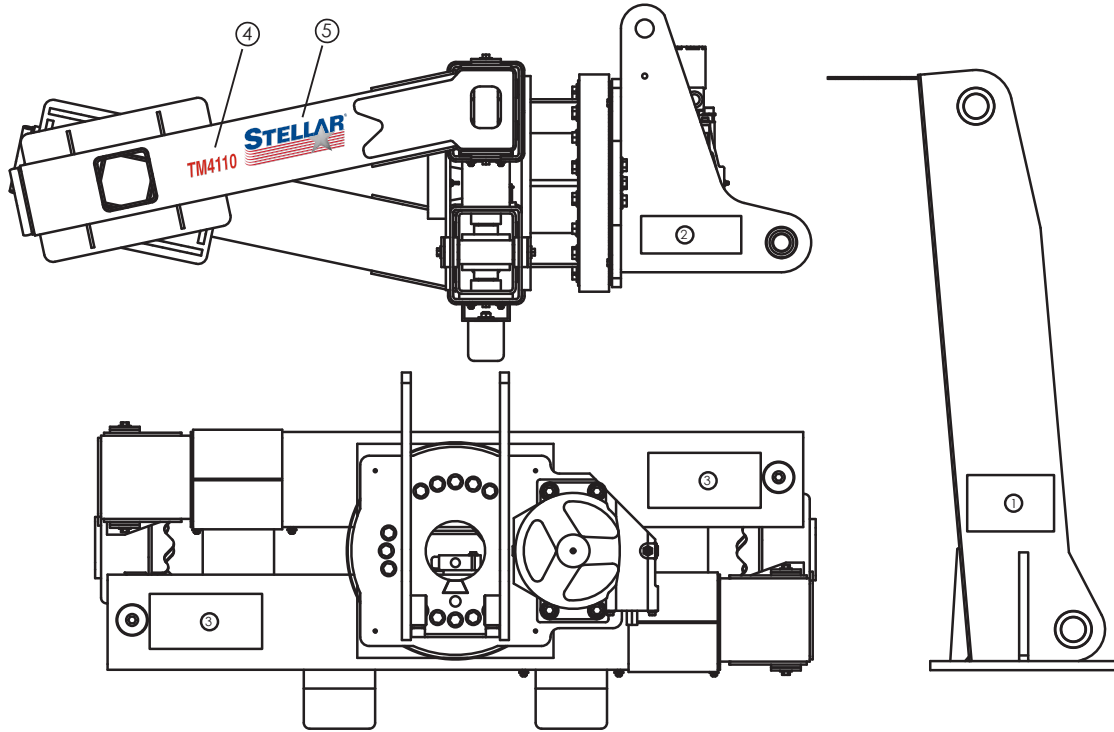
PN 63809

ITEM	PART No.	DESCRIPTION	QTY
12	35111	VALVE COMB DIV FD50-44-6T-N-44	2
11	3338	FTG 4-6 MFS-MAORB 90	4
10	52615	HOSE-HYD .25 X 50.00	1ref
09	83421	HOSE-HYD .25 X 26.00	1ref
08	65097	HOSE-HYD .25 X 69.00	1ref
07	83422	HOSE-HYD .25 X 80.00	2ref
06	63807	HOSE-HYD .25 X 94.00	1ref
05	24518	HOSE-HYD .25 X 88.00	2ref
04	63805	HOSE-HYD .25 X 70.00	2ref
03	52610	HOSE-HYD .25 X 85.00	2ref
02	63806	HOSE-HYD .25 X 38.00	2ref
01	62806	HOSE KIT, TM4110(incl:2-10)	1

ITEM	PART No.	DESCRIPTION	QTY
23	53479	LOOM 1.00 SPIRAL WRAP POLYETHYLENE	4
22	D1314	FTG 4-4 MFS-FFSS 90	6
21	12160	FTG 4-8 MFS-MORB STRAIGHT	2
20	13557	QUICK COUPLER 2FFN38-12SAE-M	1
19	13556	QUICK COUPLER 2FFN38-12SAE-F	1
18	13555	QUICK COUPLER 2FFI14-38SAE-M	2
17	13554	QUICK COUPLER 2FFI14-38SAE-F	2
16	D1190	FTG 4-6 MFS-MAORB 45	2
15	C4922	FTG 4-6 MFS-MORB STRAIGHT	14
14	7354	FTG 4-4-4 MFS-MFS-MFS TEE	2
13	C1111	FTG 10-6 MORB-FORB STRAIGHT REDUCER	2

USE SPIRAL HOSE WRAP (53479) OVER HOSES THRU BODY ROTATION AREA

Decal Placement - PN 35432

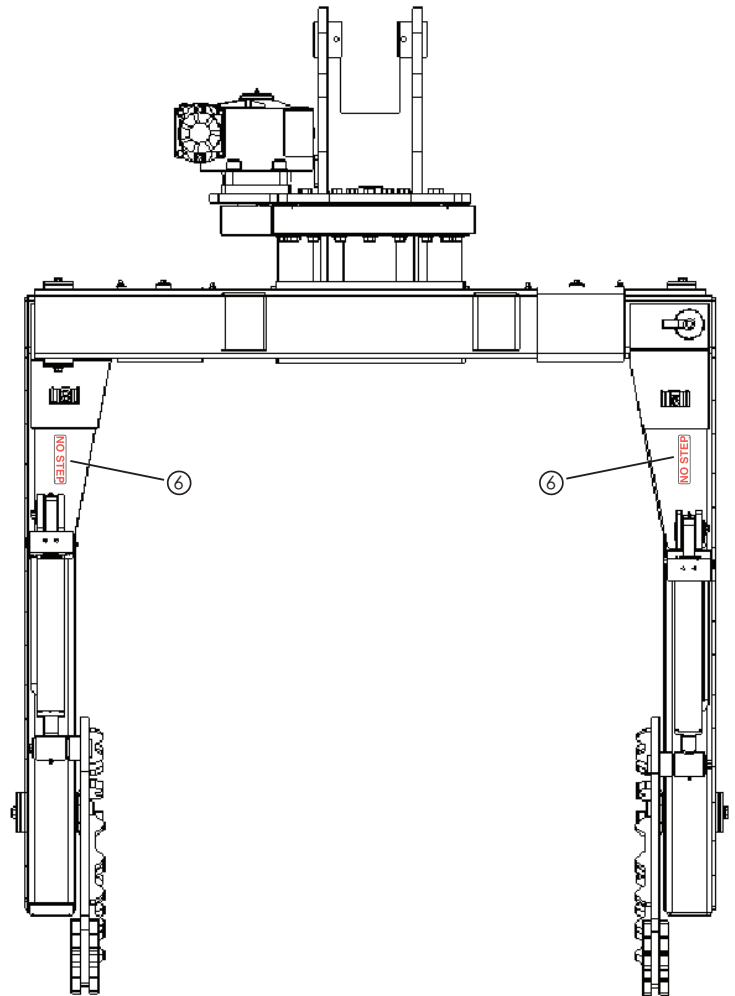


Last Revision

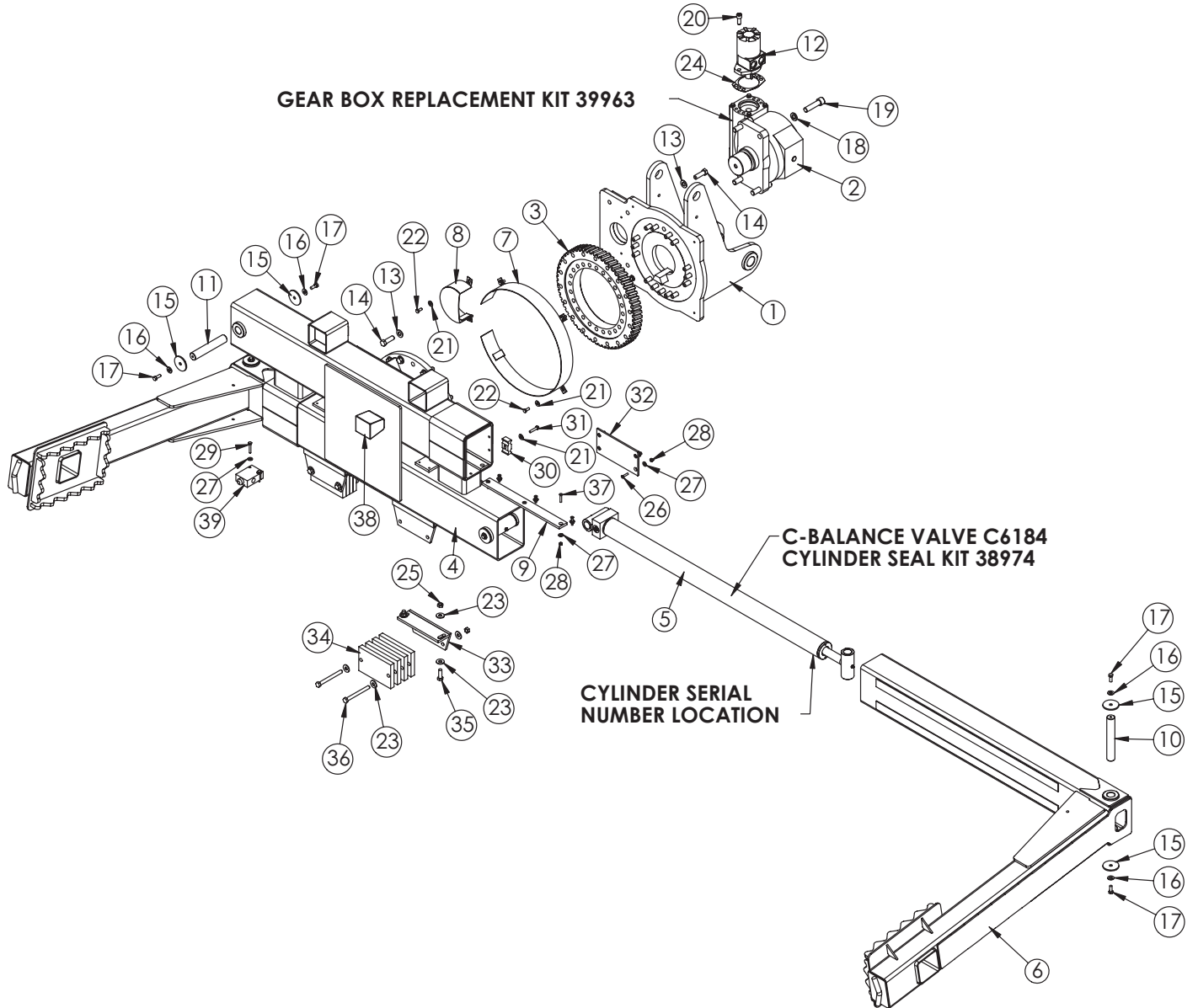
Rev Level: C
 Date: 01/14/22
 By: MEL
 Change: Added 24982 (2)

PN 35432

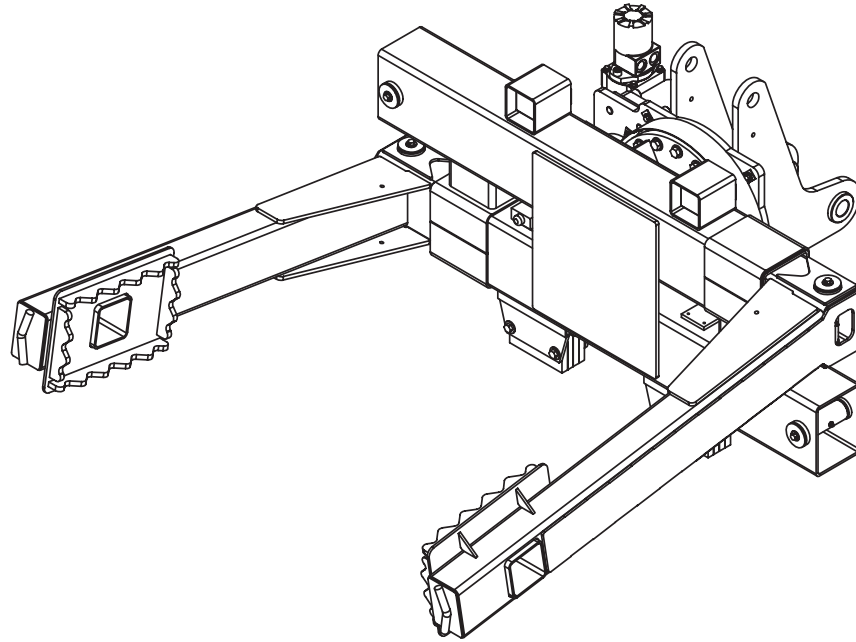
ITEM	P/N	DESCRIPTION	QTY.
01	38664	DECAL CAPACITY TM4110	2
02	35113	DECAL TM4110 TIREMAN ROATATION	1
03	35114	DECAL TM4110 RATED LOAD	2
04	54598	DECAL IDENTIFICATION TM4110	2
05	53850	DECAL STELLAR LOGO 4.00X11.5	2
06	24982	DECAL NO STEP 5.00X1.25	2



TM4110 Standard Breakdown - PN 61223



TM4110 Standard Bill - PN 61223



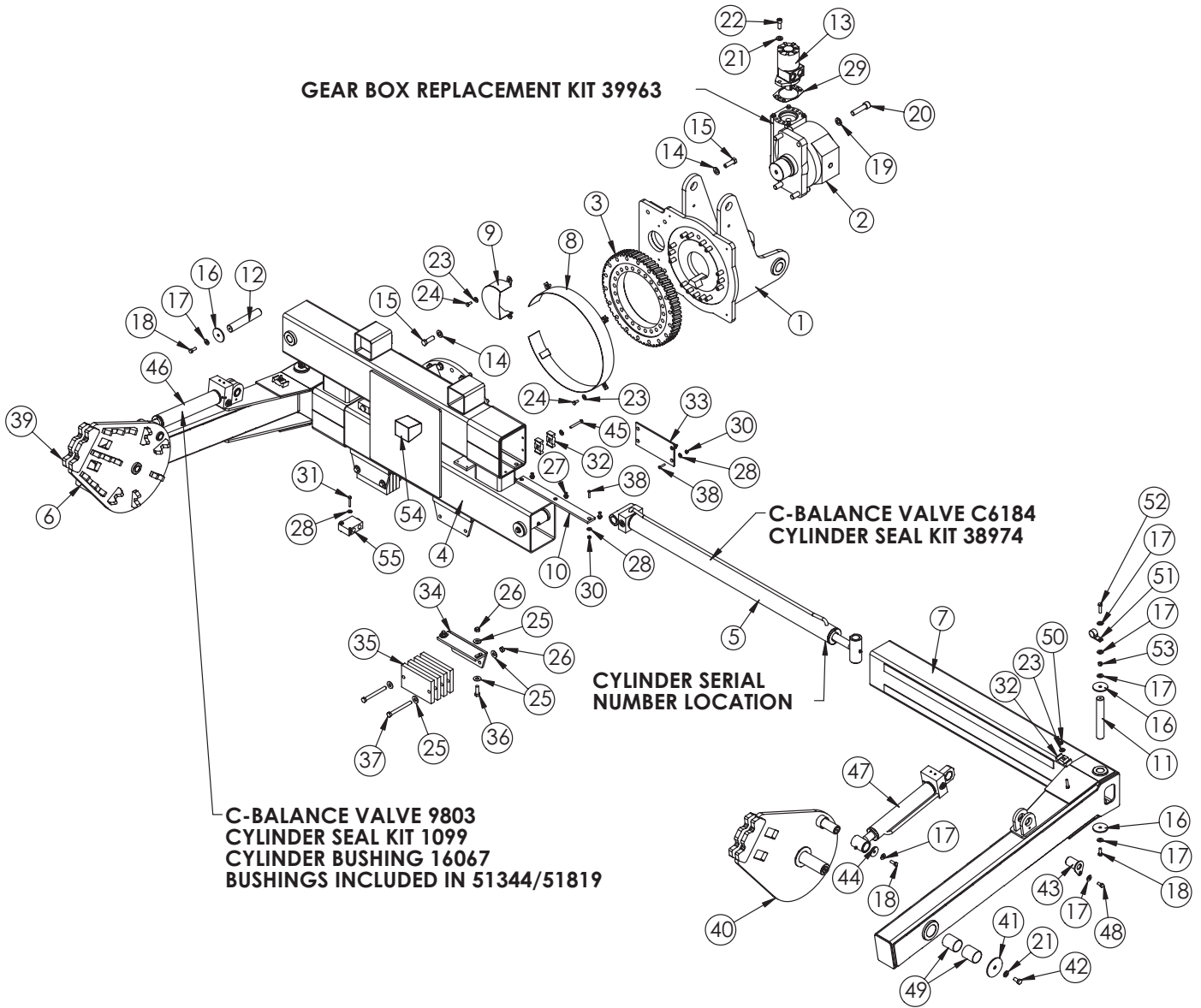
PN 61233

ITEM	PART	DESCRIPTION	QTY.	ITEM	PART	DESCRIPTION	QTY.
1	61227	BASE TM4110 V2	1	25	C6106	NUT 0.50-13 HHGR5 NYLOC	8
2	33944	GEARBOX 010(EAR 02356)	1	26	D1315	CAP SCR 0.25-20X1.00 FSH CAP	16
3	33945	TURNTABLE BEARING 450-05110-1	1	27	0340	WASHER 0.25 FLAT	22
4	51650	BODY TM4110 ROT PADS	1	28	0333	NUT 0.25-20 HHGR5 NYLOC	20
5	72399	CYLINDER 2.50X31.25	2	29	0332	CAP SCR 0.25-20X1.75 HHGR5	2
6	61224	ARM TM4110 V2	2	30	8621	CLAMP HOSE/TUBE AG-3	2
7	35002	GEAR GUARD TM4110	1	31	0486	CAP SCR 0.31-18X1.50 HHGR5	2
8	29727	GEAR GUARD TM6120C	1	32	39545	WEAR PAD TM4110 BACK	2
9	64305	WEAR PAD TM4110 0.38X1.75X17.00 W/COUNTERSINKS	4	33	28034	ANGLE WLDMT BUMPER TM6120	2
10	7402	PIN 1.25X8.00 D&T	2	34	27989	FLAT BELTED RUBBERTM6120 BUMPER	8
11	35092	PIN 1.25X7.00 D&T	2	35	0359	CAP SCR 0.50-13X1.50 HHGR5	4
12	32308	MOTOR HYD EATON 158-1035	1	36	C1000	CAP SCR 0.50-13X5.00 HHGR5	4
13	C5902	WASHER 0.63 SAE FLAT YELLOW GR8	34	37	41687	CAP SCR 0.25-20X1.25 FSH CAP	4
14	C1025	CAP SCR 0.63-11X2.00 HHGR8 ZY	34	38	78431	LIGHT FLOOD LED 3.2X2.9 850LM 16W 10-30V	2
15	7403	PIN CAP 0.44X2.50X0.19 YZ	8	39	35111	VALVE COMB DIV FD10-44-6T-N-44	1
16	C6353	WASHER 0.38 FLAT GR8	8				
17	0351	CAP SCR 0.38-16X1.00 HHGR5	8				
18	C6219	WASHER 0.75 SAE FLAT YELLOW GR8	4				
19	35097	CAP SCR 0.75-10X3.00 SHGR8 ZINC	4				
20	D1307	CAP SCR 0.50-13X1.25 SHGR8 W/ RED PATCH	2				
21	0343	WASHER 0.31 USS FLAT ZINC	8				
22	0420	CAP SCR 0.31-18X0.75 HHGR5	6				
23	0352	WASHER 0.50 USS FLAT ZINC	16				
24	21151	GASKET MOTOR 008-10056-1	1				

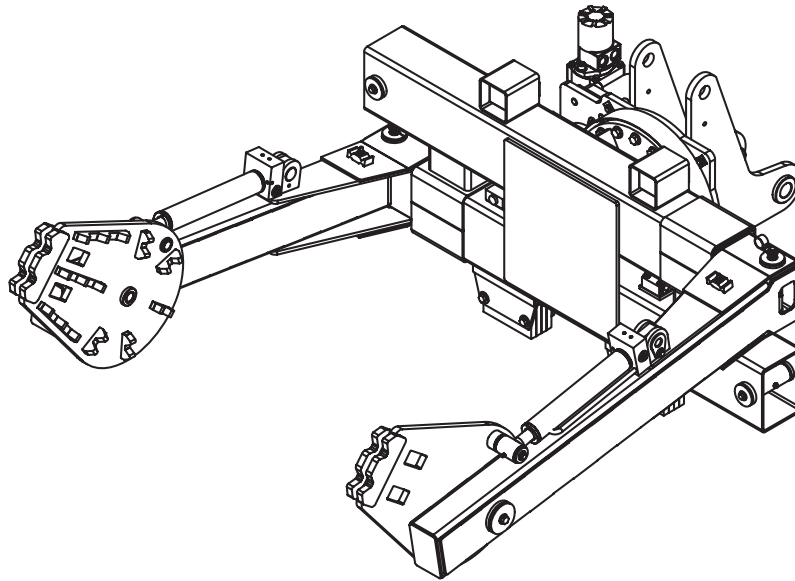
NOT SHOWN:

D0240 (1) FTG 4-2 CPRSN-MP 90
D1810 (0.67 FT) TBE AIR SAEJ844 TYPE A .25 (RM)
D1345 (1) FTG 4-2 CPRSN-MP STRAIGHT
22161 (1) FTG 2-2 FP-FP COUPLER STRAIGHT BRASS
56589 (1) ZERK 1/8 NPT STRAIGHT LONG THREAD
9752 (2) CONNECT 2 PIN SHROUD PACKARD
9756 (4) CONTACT M TERM SHROUD 18-20
8384 (4) CABLE SEAL 18-20 PACKARD 39000

TM4110 w/Rotation Pads Breakdown - PN 61386



TM4110 w/Rotation Pads Bill - PN 61386



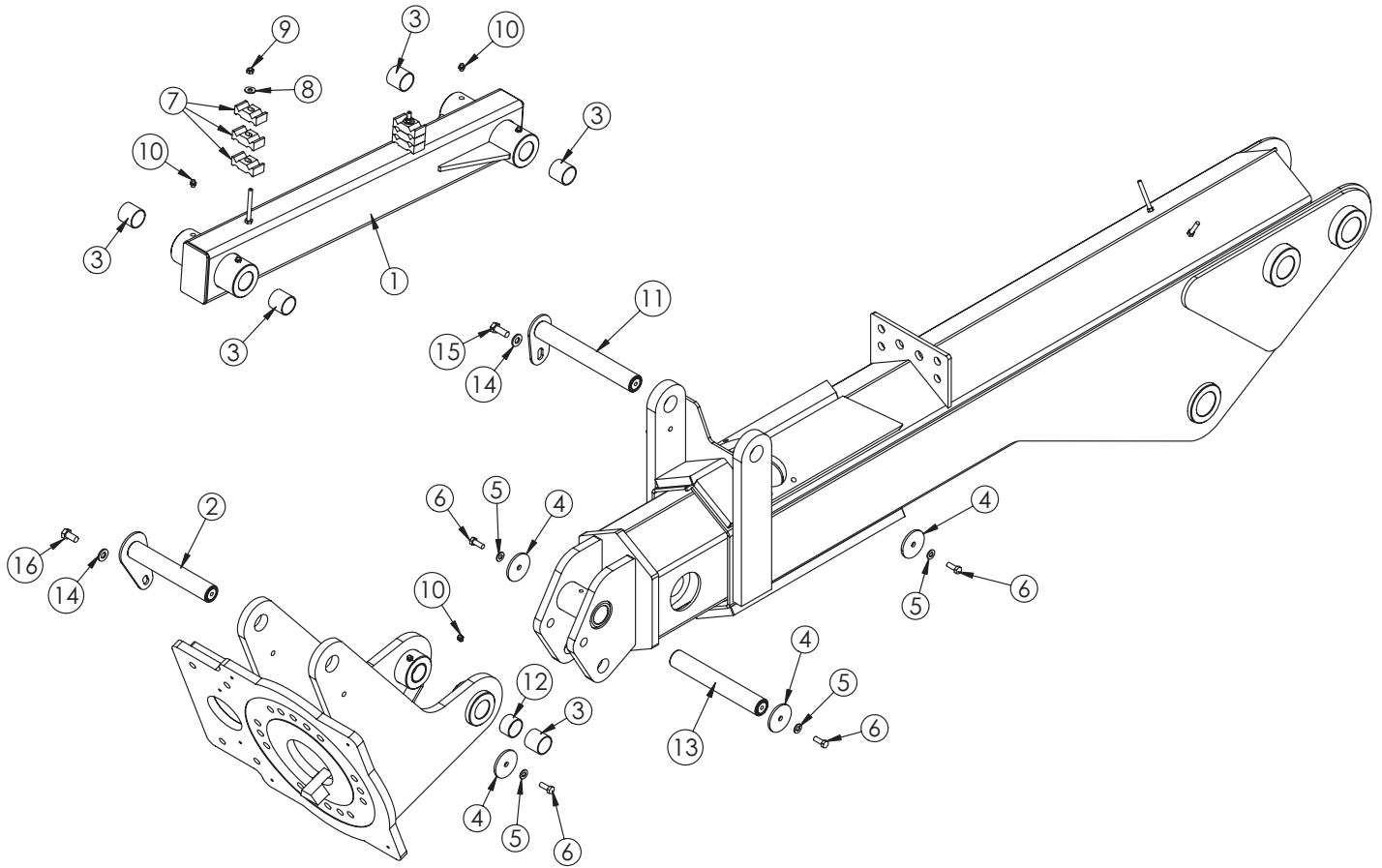
PN 61233

ITEM	PART	DESCRIPTION	QTY.	ITEM	PART	DESCRIPTION	QTY.
1	61227	BASE TM4110 V2	1	30	0333	NUT 0.25-20 HHGR5 NYLOC	20
2	33944	GEAR BOX TM4110 008-00253-1	1	31	0332	CAP SCR 0.25-20X1.75 HHGR5	4
3	33945	TURNTABLE BEARING 450-05110-1	1	32	8621	CLAMP HOSE/TUBE AG-3	6
4	51650	BODY TM4110 ROT PADS	1	33	39545	WEAR PAD TM4110 BACK	2
5	72399	CYLINDER 2.50X31.25	2	34	28034	ANGLE WLDMT BUMPER TM6120	2
6	61387	ARM TM4110 ROT PADS SS V2	1	35	27989	FLAT BELTED RUBBERTM6120 BUMPER	8
7	61388	ARM TM4110 ROT PADS CS V2	1	36	0359	CAP SCR 0.50-13X1.50 HHGR5	4
8	35002	GUARD TTB TM4110 PC BLACK	1	37	C1000	CAP SCR 0.50-13X5.00 HHGR5	4
9	29727	GUARD TTB TM6120C PC BLACK	1	38	41687	CAP SCR 0.25-20X1.25 FHSH CAP	8
10	64305	WEAR PAD TM4110 0.38X1.75X17.00 W/COUNTERSINKS	4	39	61391	PAD TM4110 ROT PAD SS V2	1
11	7402	PIN 1.25X8.00 D&T	2	40	61394	PAD TM4110 ROT PAD CS V2	1
12	35092	PIN 1.25X7.00 D&T	2	41	8377	PIN CAP 0.56X3.50X0.19 YZ	2
13	32308	MOTOR HYD EATON 158-1035	1	42	10172	CAP SCR 0.50-13X1.00 HHGR8 ZY	2
14	C5902	WASHER 0.63 SAE FLAT YELLOW GR8	34	43	51652CR	PIN TEAR DROP 1.50X2.31 ZC	2
15	C1025	CAP SCR 0.63-11X2.00 HHGR8 ZY	34	44	9320	PIN CAP 0.44X1.75X0.19 YZ	2
16	7403	PIN CAP 0.44X2.50X0.19 YZ	8	45	0489	CAP SCR 0.31-18X2.50 HHGR5	2
17	C6353	WASHER 0.38 FLAT GR8	16	46	51344	CYLINDER 2.00X9.75 SS	1
18	0351	CAP SCR 0.38-16X1.00 HHGR5	8	47	51819	CYLINDER 2.00X9.75 CS	1
19	C6219	WASHER 0.75 SAE FLAT YELLOW GR8	4	48	0492	CAP SCR 0.38-16X0.75 HHGR5	2
20	35097	CAP SCR 0.75-10X3.00 SHGR8 ZINC	4	49	51445	BUSHING COMPOSITE FIBER 2.00X2.50	4
21	D0790	WASHER 0.50 FLAT GR8	4	50	0342	NUT 0.31-18 HH NYLOC	2
22	D1307	CAP SCR 0.50-13X1.25 SHGR8 W/ RED PATCH	2	51	C5586	CLAMP 1.38	2
23	0343	WASHER 0.31 USS FLAT ZINC	10	52	16962	CAP SCR 0.38-16X1.50 HHGR8	2
24	0420	CAP SCR 0.31-18X0.75 HHGR5	6	53	56673	NUT 0.38-16 HHGR8 NYLOC	2
25	0352	WASHER 0.50 USS FLAT ZINC	16	54	78431	LIGHT FLOOD LED 3.2X2.9 850LM 16W 10-30V	2
26	C6106	NUT 0.50-13 HHGR5 NYLOC	8	55	35111	VALVE COMB DIV FD50-44-6T-N-44	2
27	D1315	CAP SCR 0.25-20X1.00 FHSH CAP	12				
28	0340	WASHER 0.25 FLAT	24				
29	21151	GASKET MOTOR 008-10056-1	1				

NOT SHOWN:

D0240 (1) FTG 4-2 CPRSN-MP 90
D1810 (0.67 FT) TBE AIR SAEJ844 TYPE A .25 (RM)
D1345 (1) FTG 4-2 CPRSN-MP STRAIGHT
22161 (1) FTG 2-2 FP-FP COUPLER STRAIGHT BRASS
56589 (1) ZERK 1/8 NPT STRAIGHT LONG THREAD
9752 (2) CONNECT 2 PIN SHROUD PACKARD
9756 (4) CONTACT M TERM SHROUD 18-20
8384 (4) CABLE SEAL 18-20 PACKARD 39000

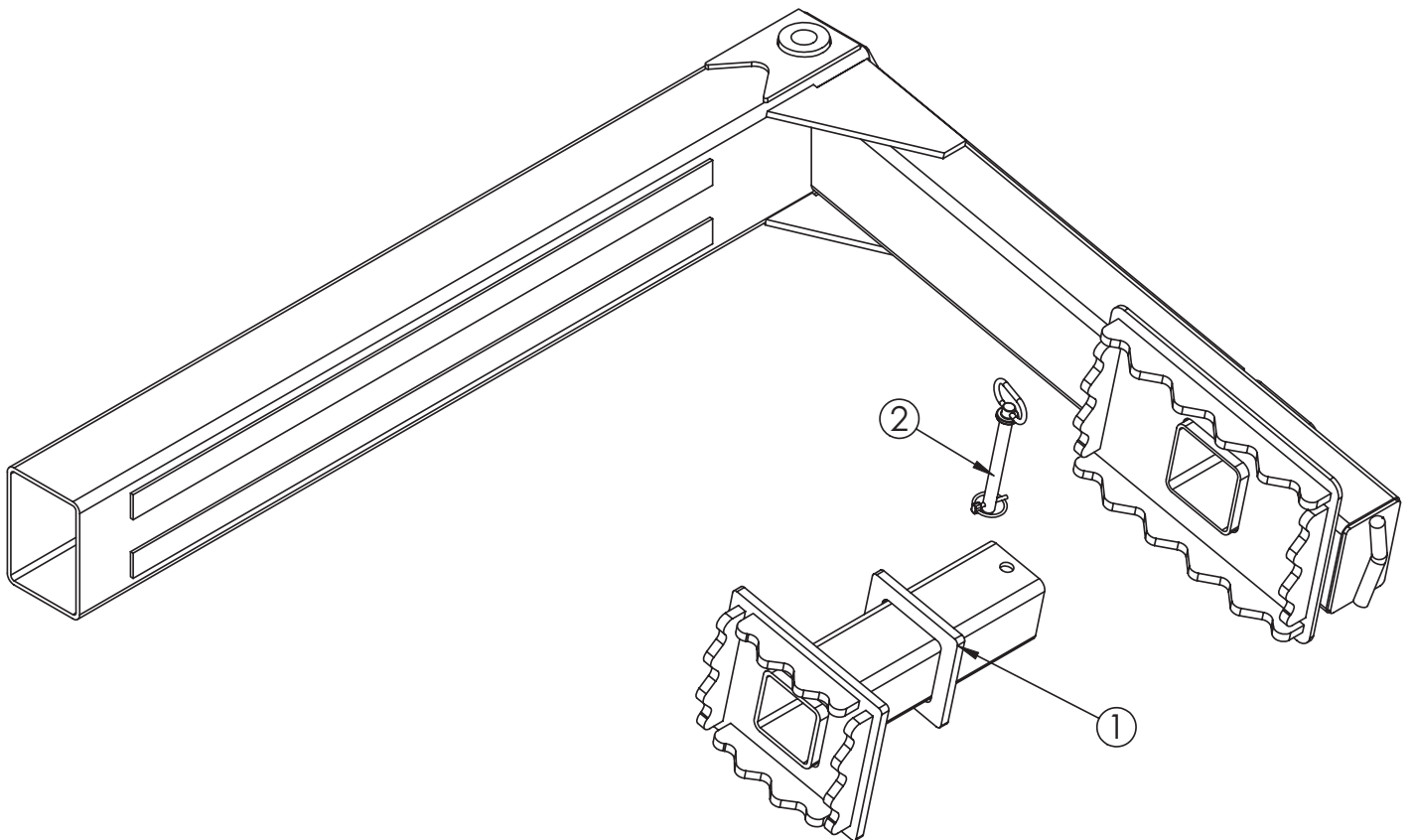
Mounting Kit - PN 61401



PN 61401

ITEM	PART	DESCRIPTION	QTY.
1	61382	LINK TM4110 V2	1
2	35102ZP	PIN TEAR DROP 1.50X9.06	1
3	0067	BUSHING BPC24DXR24 1.50X1.50	6
4	7403	PIN CAP 0.56X3.50X.25	4
5	C6353	WASHER 0.38 SAE FLAT YELLOW GR8	4
6	13573	CAP SCR 0.38-16X1.00 HHGR8	4
7	8621	CLAMP HOSE/TUBE AG-3	6
8	0343	WASHER 0.31 USS FLAT ZINC	2
9	0342	NUT 0.31-18 HH NYLOC	2
10	c1592	ZERK 1/8 NPT STRAIGHT	6
11	61404ZP	PIN TEAR DROP 1.50X11.06	1
12	16067	BUSHING BPC24DXR16 1.50X1.00	2
13	13873ZP	PIN 1.50X10.00 D&T	1
14	D0790	WASHER 0.50 SAE FLAT YELLOW GR8	2
15	10666	CAP SCR 0.50-13X1.25 HHGR8	1
16	10172	CAP SCR 0.50-13X1.00 HHGR8	1

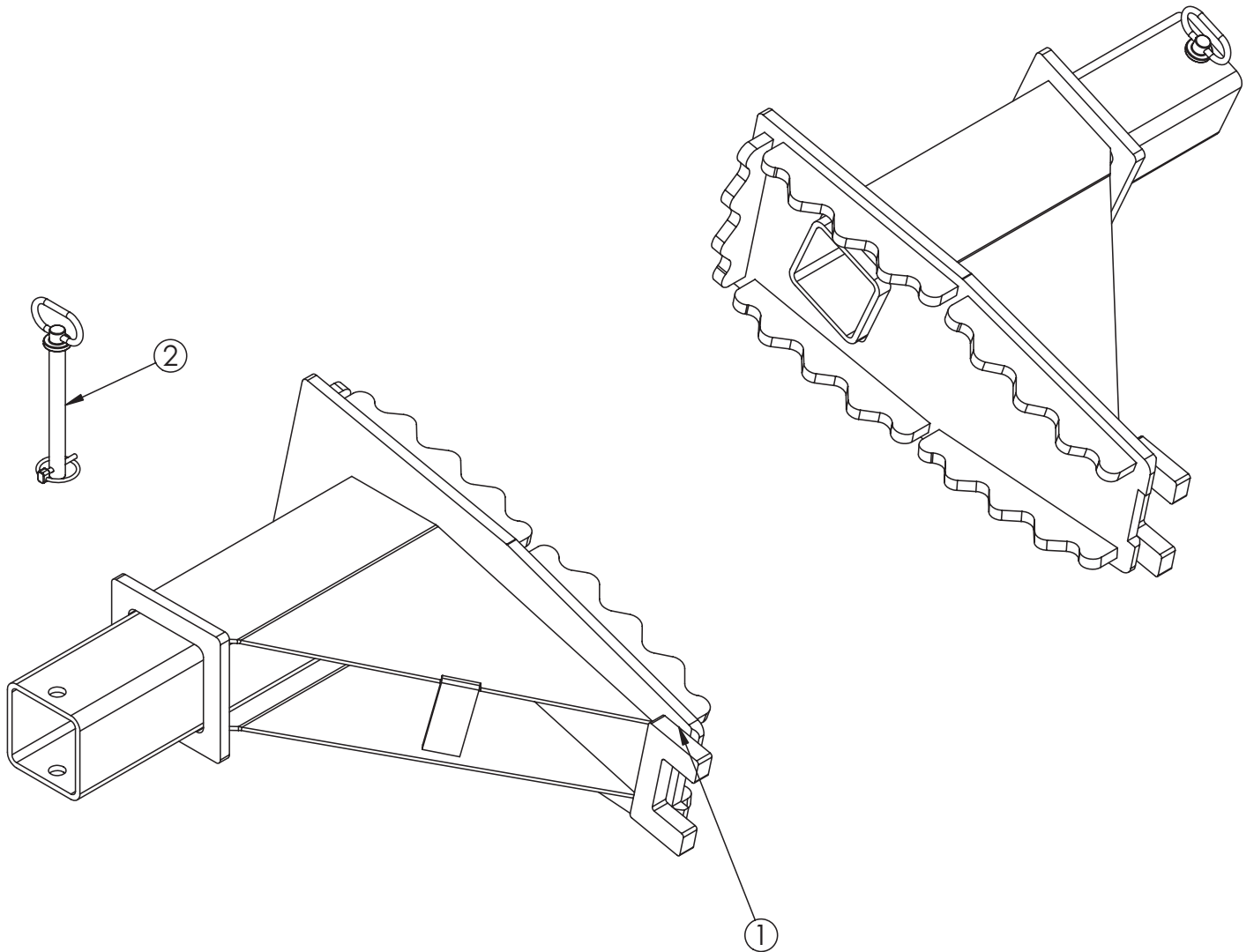
Optional Pad Extensions - PN 35434



PN 35434

ITEM	PART	DESCRIPTION	QTY.
1	34942	PAD EXTENSION TM4110 20"	1
2	54922	PIN HITCH 0.63X6.50 W/LYNCH PIN	1

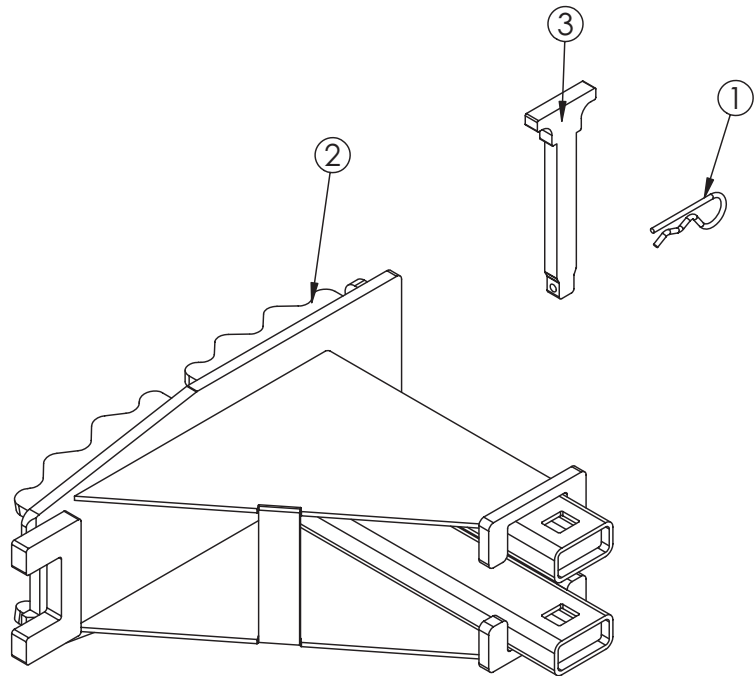
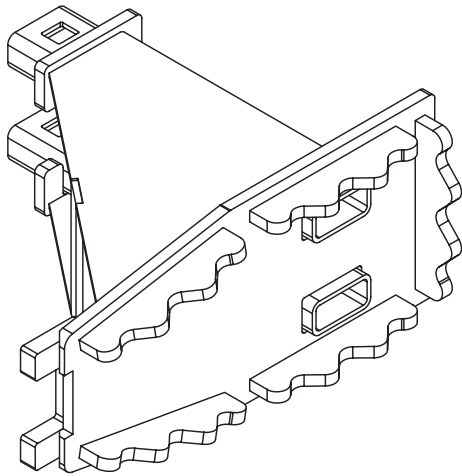
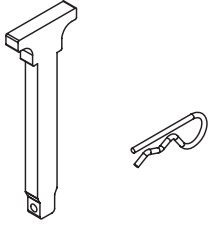
Optional Pad Extensions - PN 58288



PN 58288

ITEM	PART	DESCRIPTION	QTY.
1	57921	PAD EXTENSION TM4110 TEAR DROP	2
2	54922	PIN HITCH 0.63X6.50 W/LYNCH PIN	2

Optional Pad Extensions - PN 81015



PN 81015

ITEM	PART	DESCRIPTION	QTY.
1	71894	HAIR PIN CLIP 0.19 x 3.75	2
2	81010	PAD EXT TM4110 ROT PAD SQUARE PIN	2
3	81016	PIN SQUARE PAD EXT TM4110	2



Subject to Change without Notification.
© 2022 Stellar Industries, Inc.