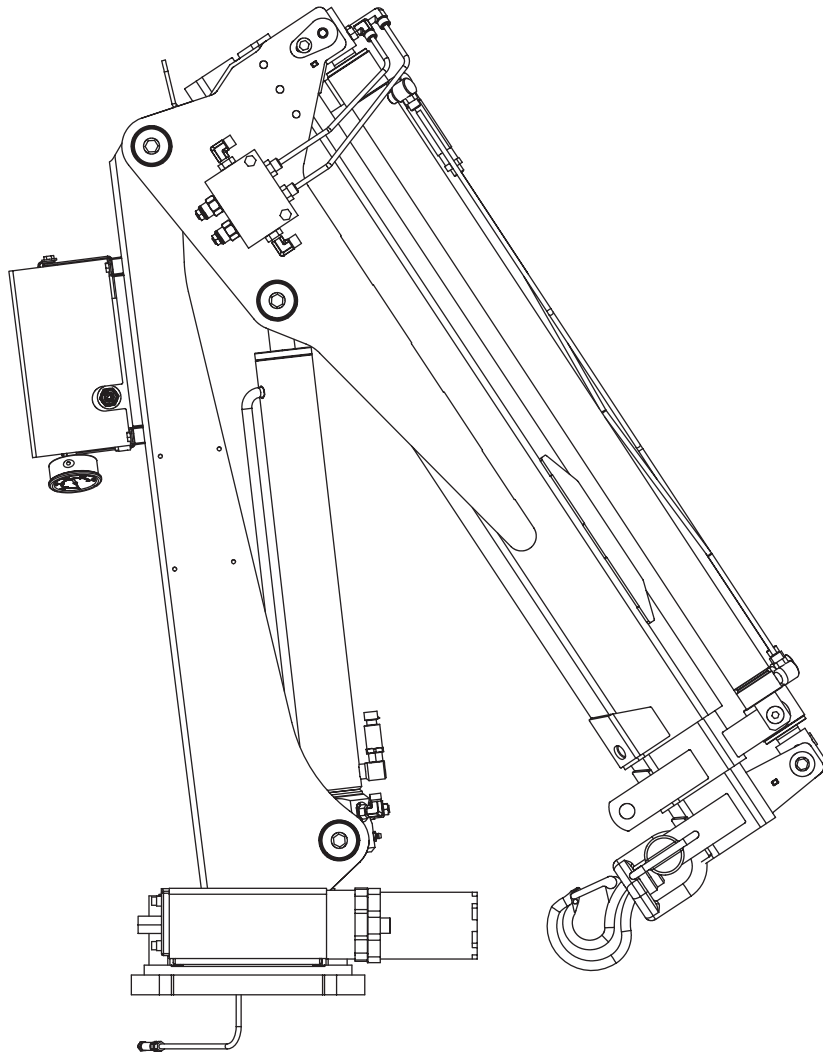




Model TC13 Telescopic Crane Owner's Manual

Installation • Assembly Drawings • Parts



**Notice: A copy of this manual must remain with the equipment at all times.
For a printable download copy, please visit: www.stellarindustries.com**

Stellar Industries, Inc.

190 State Street

PO Box 169

Garner, IA 50438

800-321-3741

Fax: 641-923-2811

www.stellarindustries.com

Subject to Change without Notification.
© 2023 Stellar Industries, Inc.

Rev 3
PN 93296

P65 Warning / Notice / Serial Tag Location

WARNING

Operating, maintaining, and servicing a Stellar product may expose you to chemicals including, but not limited to, engine exhaust, carbon monoxide, phthalates, and lead. These chemicals are known to the State of California to cause cancer and birth defects (or other reproductive harm). To keep your exposure to a minimum, be sure to avoid breathing exhaust and service your Stellar product in a well-ventilated area while wearing gloves or washing your hands frequently. For more information, go to www.P65Warnings.ca.gov/passenger-vehicle.



www.p65warnings.ca.gov

NOTICE

Cold Weather Performance

Although clear data on cold weather performance from every steel manufacturer is not available for all types and thicknesses of steel, Stellar Industries is confident that the weldments on our products will operate to 100% of their intended purpose to temperatures down to -40° F / C.

It is recommended if Stellar manufactured equipment needs to be used in temperatures below -40° F / C, the operator should pull the unit into a climate-controlled area and allow the weldments to warm up to and then maintain a temperature above this level.

Serial Tag Location

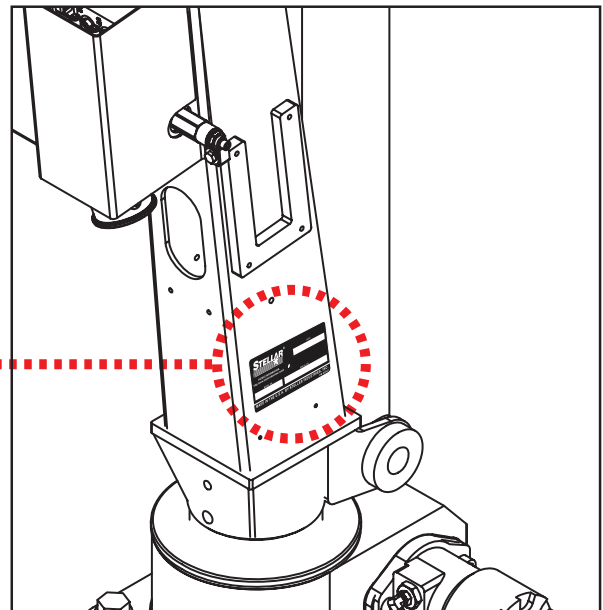
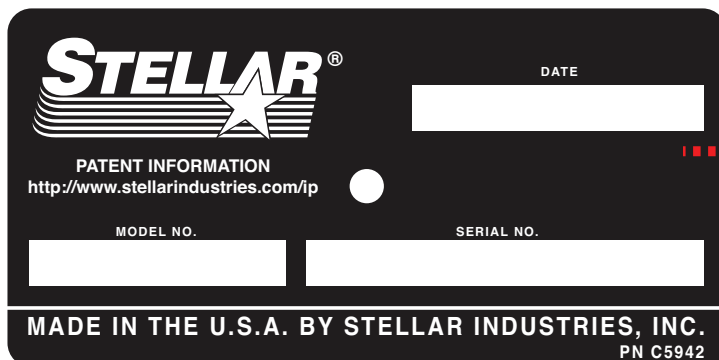


Table of Contents

Introduction.....	iv
Chapter 1 - Specifications	1
Model TC13 Specifications.....	2
Model TC13 w/Winch Specifications	3
TC13 Capacity.....	4
Chapter 2 - Installation.....	5
General Installation.....	6
Installer Notice.....	6
Torque Data Chart	7
Installation Overview	8
TC13 Mounting Detail.....	9
TC13 Installation Drawing - PN 90459	10
TC13 Installation Drawing - PN 90459 Parts List	11
Control Kit - PN 96174.....	12
Control Kit - PN 96174 Parts List.....	13
Control Kit Installation Drawing - PN 96175	14
Control Kit w/Winch Installation Drwg - PN 96175 (13/23).....	15
TC Series Wiring Diagram.....	16
Hydraulic Kit - PN 96494	18
Hydraulic Kit - PN 96494 Parts List	19
Hydraulic Kit w/Winch - PN 96495.....	20
Hydraulic Kit w/Winch - PN 96495 Parts List.....	21
TC13 Hydraulic Schematic	22
Hydraulic Kit Installation Drawing - PN 90469.....	23
Hyd. Kit w/ Winch Installation Drawing - PN 94137	24
Optional Power Unit Assembly - PN 77897	25
Face Seal/O-Ring Size Chart	26
Stability Procedure	27
Crane Load Level Indicator	28
Decal Placement - PN 76875	29
Chapter 3 - Assembly Drawings.....	31
Base Assembly - PN 88695.....	32
Base Assembly - PN 88695 Parts List.....	33
Gear Bearing Assembly - PN 41640.....	34
Mast Assembly - PN 88884	36
Mast Assembly - PN 88884 Parts List	37
Boom Assembly (No Winch) - PN 88944.....	38
Boom Assembly (No Winch) - PN 88944 Parts List.....	39
Boom Assembly w/Winch - PN 92671	40
Boom Assembly w/Winch - PN 92671 Parts List	41
Winch Kit Assembly - PN 75172	42
Winch Kit Assembly - PN 75172 Parts List.....	43
Winch Kit Assembly - PN 75172 Parts List - cont.	44
Stabilizer Base Assembly - PN 78440	46
Stabilizer Base Assembly - PN 78440 Parts List	47
Stabilizer Cylinder Assembly - PN 78850	48
Stabilizer Hydraulic Kit - PN 78858	49
Stabilizer Hydraulic Installation - PN 78854	50
Manual Crank Stabilizer Kit - PN 93291	51

Introduction

A copy of this manual is provided with every crane and can be found in the hard plastic manual case that is installed on the chassis. A copy of this manual shall remain with the crane at all times.

Throughout the manual, three signal words will be used to bring attention to important items:

NOTICE

A NOTICE signal word indicates a practice not related to physical injury.

⚠ WARNING

A WARNING signal word indicates a hazardous situation which, if not avoided, could result in death or serious injury.

⚠ DANGER

A DANGER signal word indicates a hazardous situation which, if not avoided, will result in death or serious injury.

Information contained within this manual does not cover operation, maintenance, or troubleshooting. Please refer to the General Light Duty Crane Manual for details on these items.

This manual is not binding. Stellar Industries, Inc. reserves the right to change, at any time, any or all of the items, components, and parts deemed necessary for product improvement or commercial/production purposes. This right is kept with no requirement or obligation for immediate mandatory updating of this manual.

If more information is required or technical assistance is needed, or if you feel that any part of this manual is unclear or incorrect, please contact the Stellar Customer Service Department by phone at 800-321-3741 or email at service@stellarindustries.com.

**For Technical Questions, Information, Parts, or Warranty, Call Toll-Free at
800-321-3741**

Hours: Monday - Friday, 8:00 a.m. - 5:00 p.m. CST

Or email at the following addresses:

Technical Questions, and Information

service@stellarindustries.com

Order Parts

parts@stellarindustries.com

Warranty Information

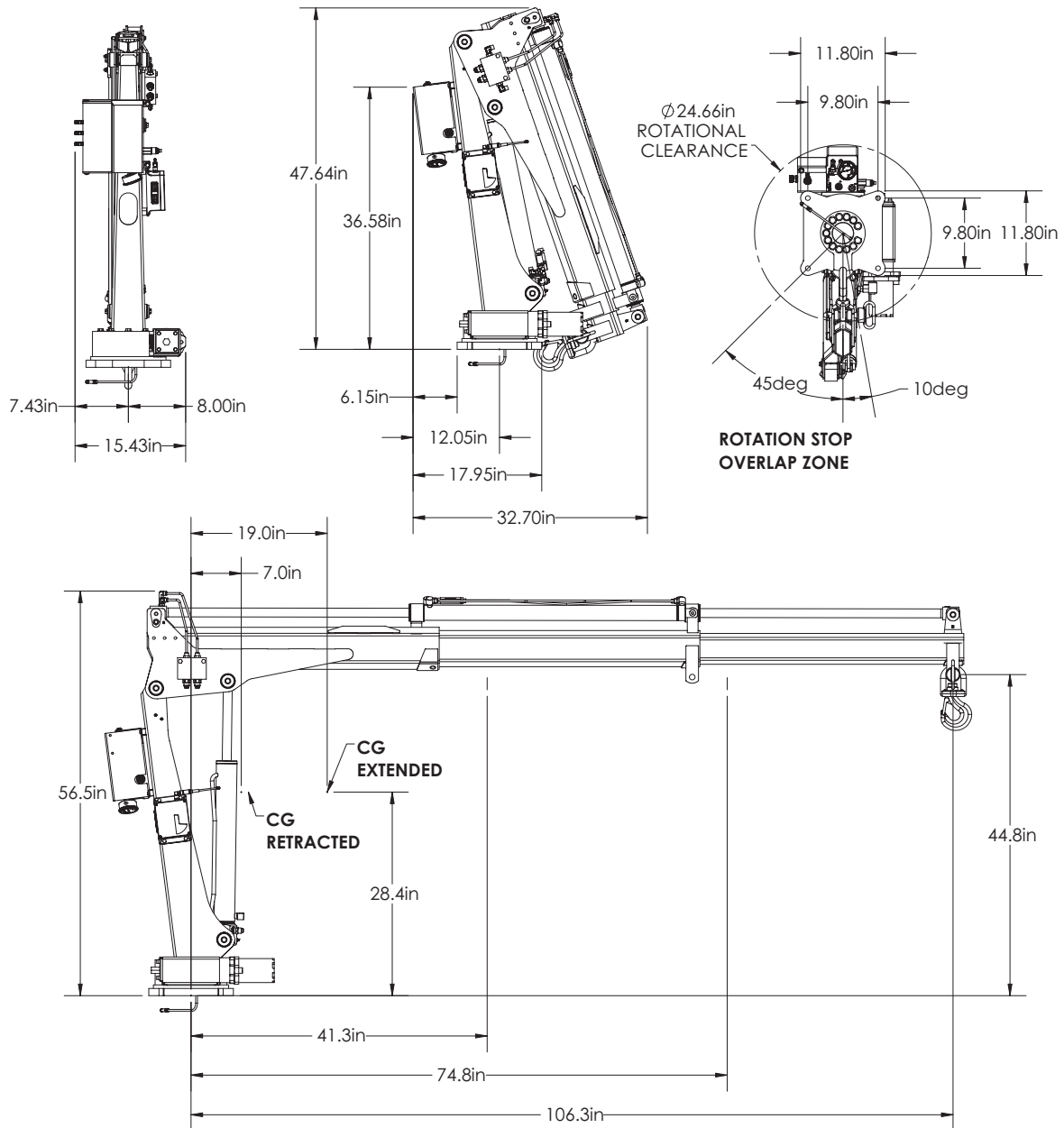
warranty@stellarindustries.com

Chapter 1 - Specifications

Chapter Contents

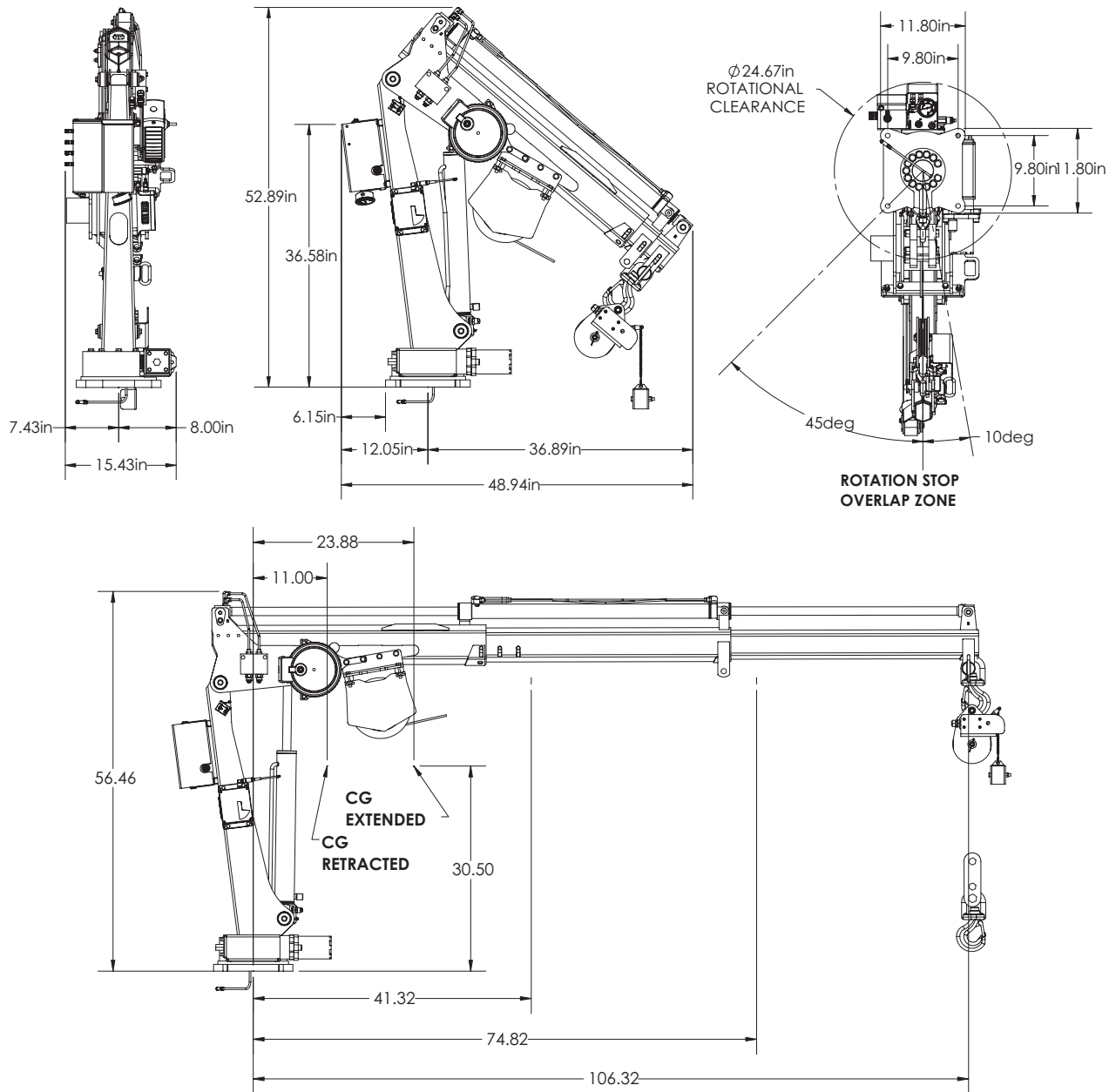
Model TC13 Specifications	2
Model TC13 w/Winch Specifications.....	3
TC13 Capacity	4

Model TC13 Specifications



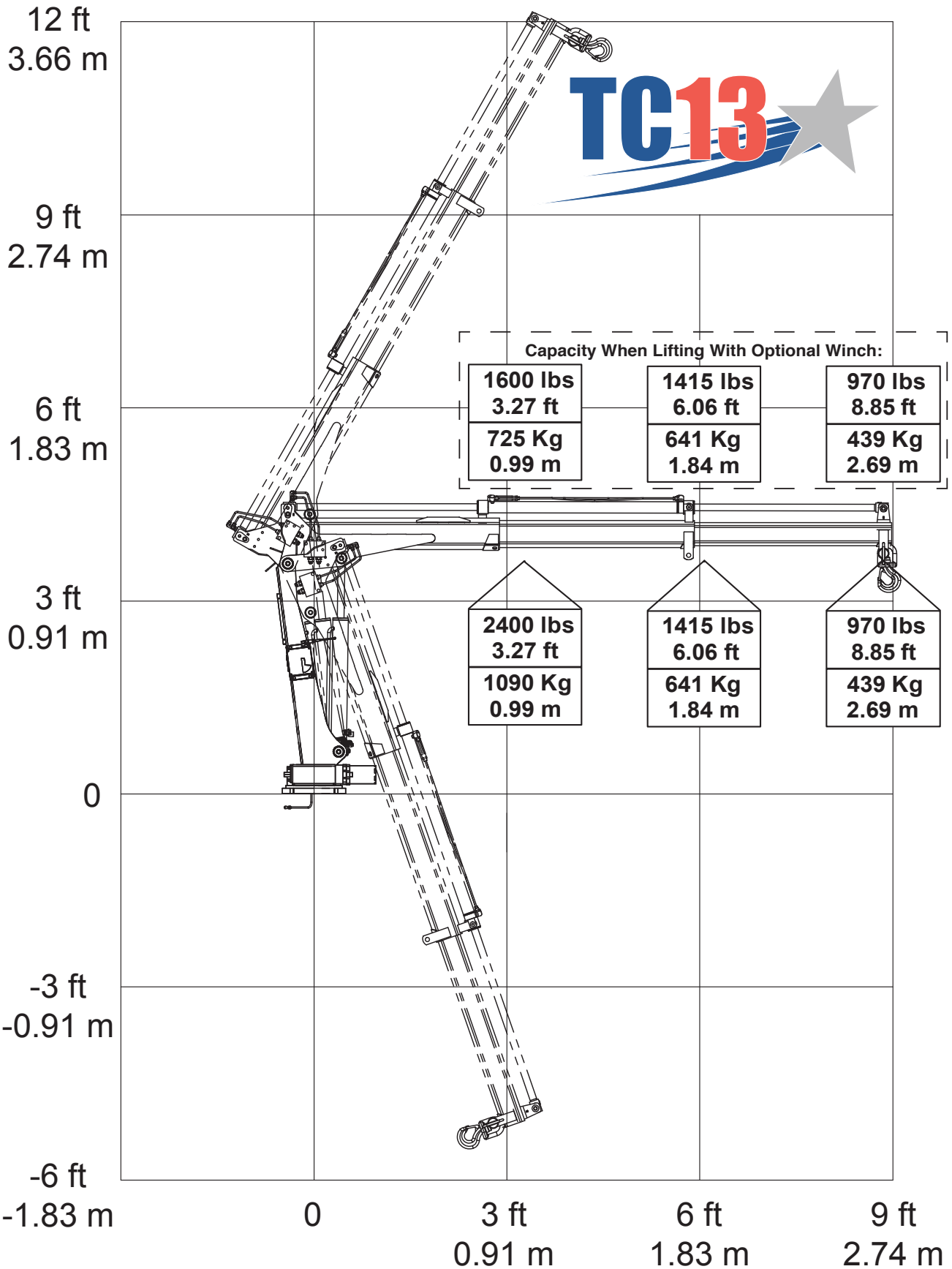
TC13 2H	
Crane Rating:	8,600 ft-lbs (11.66 kNm)
Max Lifting Capacity:	2,400 lbs (1,090 kg)
Max Reach:	8.86 ft (2.7 m)
Slewing Angle:	410°
Operating Pressure:	2,750 psi 19.0 Mpa (190 bar)
Pump Capacity:	2.5 gpm (9.5 Lpm)
Crane Weight:	420 lbs (190 kg)

Model TC13 w/Winch Specifications



TC13 2H Crane w/Winch	
Crane Rating:	8,600 ft.lbs (11.66 kNm)
Max Lifting Capacity:	1,600 lbs (725 kg)
Max Reach:	8.86 ft (2.7 m)
Slewing Angle:	410°
Operating Pressure:	2,750 psi 19.0 Mpa (190 bar)
Pump Capacity:	2.5 gpm (9.5 lpm)
Crane Weight (w/Winch):	560 lbs (254 kg)
Line Pull Speed:	30 ft/min (9.1 m/min)
Wire Rope:	1/4" (0.63 cm) 7X19 GAC X 65' (19.81 m)

TC13 Capacity



Chapter 2 - Installation

Chapter Contents

General Installation.....	6
TC13 Mounting Detail.....	9
TC13 Installation Drawing - PN 90459.....	10
TC13 Installation Drawing - PN 90459 Parts List.....	11
Control Kit - PN 96174.....	12
Control Kit - PN 96174 Parts List.....	13
Control Kit Installation Drawing - PN 96175.....	14
Control Kit w/Winch Installation Drwg - PN 96175 (13/23).....	15
TC Series Wiring Diagram.....	16
Hydraulic Kit - PN 96494.....	18
Hydraulic Kit - PN 96494 Parts List.....	19
Hydraulic Kit w/Winch - PN 96495.....	20
Hydraulic Kit w/Winch - PN 96495 Parts List.....	21
TC13 Hydraulic Schematic.....	22
Hydraulic Kit Installation Drawing - PN 90469.....	23
Hyd. Kit w/ Winch Installation Drawing - PN 94137.....	24
Optional Power Unit Assembly - PN 77897.....	25
Face Seal/O-Ring Size Chart.....	26
Stability Procedure.....	27
Crane Load Level Indicator.....	28
Decal Placement - PN 76875.....	29

General Installation

This chapter is designed to serve as a general guide for the installation of a Stellar TC13 Crane on a Stellar Service Body. Each installation is considered unique so certain portions of this chapter may or may not apply to your direct application. If a question should arise during the installation process, please contact Stellar Customer Service at (800) 321 3741.

This crane is designed for use with a Stellar Service Body installed on a vehicle that meets the minimum chassis requirements of the crane. It is the installer's responsibility to assure that the crane is mounted on a platform that will support the maximum crane rating of this crane.

⚠ WARNING Do not install this crane on a body not capable of handling the loads imposed on it. Failure to do so may result in serious injury or death.

NOTICE When installing welder units to the service bodies, it is highly recommended that a surge protector is installed on the chassis batteries to protect the crane radio receiver, wiring and other electronic devices from an unexpected electrical spike or surge. Failure to do so could result in extensive damage to the service body and crane electrical circuit.

Installer Notice

According to Federal Law (49 cfr part 571), each final-stage manufacturer shall complete the vehicle in such a manner that it conforms to the standards in effect on the date of manufacture of the incomplete vehicle, the date of final completion, or a date between those two dates. This requirement shall, however, be superseded by any conflicting provisions of a standard that applies by its terms to vehicles manufactured in two or more stages.

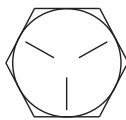
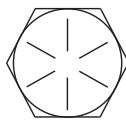
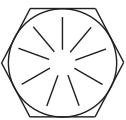
Therefore, the installer of Stellar® Cranes and Bodies is considered one of the manufacturers of the vehicle. As such a manufacturer, the installer is responsible for compliance with all applicable federal and state regulations. They are required to certify that the vehicle is in compliance with the Federal Motor Vehicle Safety Standards and other regulations issued under the National Traffic and Motor Vehicle Safety Act.

Please reference the Code of Federal Regulations, title 49 - Transportation, Volume 5 (400-999), for further information, or visit <http://www.gpoaccess.gov/nara/index.html> for the full text of Code of Federal Regulations.

Torque Data Chart

When using the torque data in the chart, the following rules should be observed:

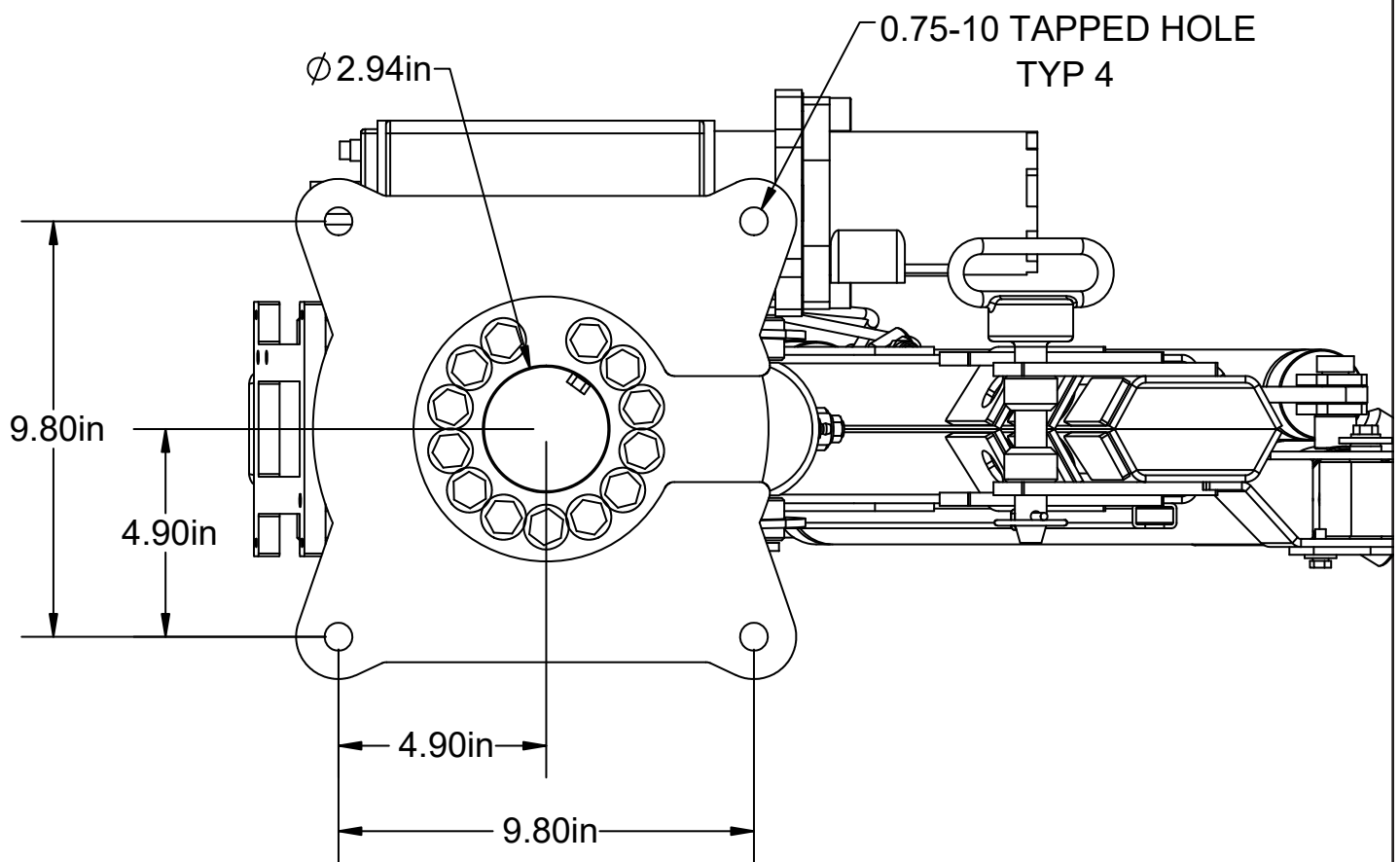
- Bolt manufacturer's particular specifications should be consulted when provided.
- Flat washers of equal strength must be used.
- All torque measurements are given in foot-pounds. To convert to inch-pounds, multiply by 12.
- Torque values specified are for bolts with residual oils or no special lubricants applied. If special lubricants of high stress ability, such as Never-Seez compound graphite and oil, molybdenum disulphite, colloidal copper or white lead are applied, multiply the torque values in the charts by the factor .90. The use of Loctite does not affect the torque values listed above.
- Torque values for socket-head capscrews are the same as for Grade 8 capscrews.
- Do not use these values if a different torque value or tightening procedure is given for a specific application. Torque values listed are for general use only. Check tightness of fasteners periodically.
- Shear bolts are designed to fail under predetermined loads. Always replace shear bolts with identical grade.
- Fasteners should be replaced with the same or higher grade. If higher grade fasteners are used, these should only be tightened to the strength of the original.
- Tighten plastic insert or crimped steel-type lock nuts to approximately 110 percent of the dry torque values shown in the chart below, applied to the nut, not to the bolt head. Tighten toothed or serrated-type lock nuts to the full torque value. *Note: "Lubricated" means coated with a lubricant such as engine oil, or fasteners with phosphate and oil coatings. "Dry" means plain or zinc plated without lubrication. Tighten lubricated bolts to approximately 80% of dry bolts.*

		GRADE 5		GRADE 8		GRADE 9
						
Size (DIA-TPI)	Bolt DIA (Inches)	Plain (Ft-Lb)	Plated (Ft-Lb)	Plain (Ft-Lb)	Plated (Ft-Lb)	Plated (Ft-Lb)
5/16-18	0.3125	17	13	25	18	22
3/8-16	0.3750	31	23	44	33	39
7/16-14	0.4375	49	37	70	52	63
1/2-13	0.5000	75	57	105	80	96
9/16-12	0.5625	110	82	155	115	139
5/8-11	0.6250	150	115	220	160	192
3/4-10	0.7500	265	200	375	280	340
7/8-9	0.8750	395	295	605	455	549
1-8	1.000	590	445	910	680	823
1 1/8-7	1.1250	795	595	1290	965	1167
1 1/4-7	1.2500	1120	840	1815	1360	1646
1 3/8-6	1.3750	1470	1100	2380	1780	2158
1 1/2-6	1.500	1950	1460	3160	2370	2865

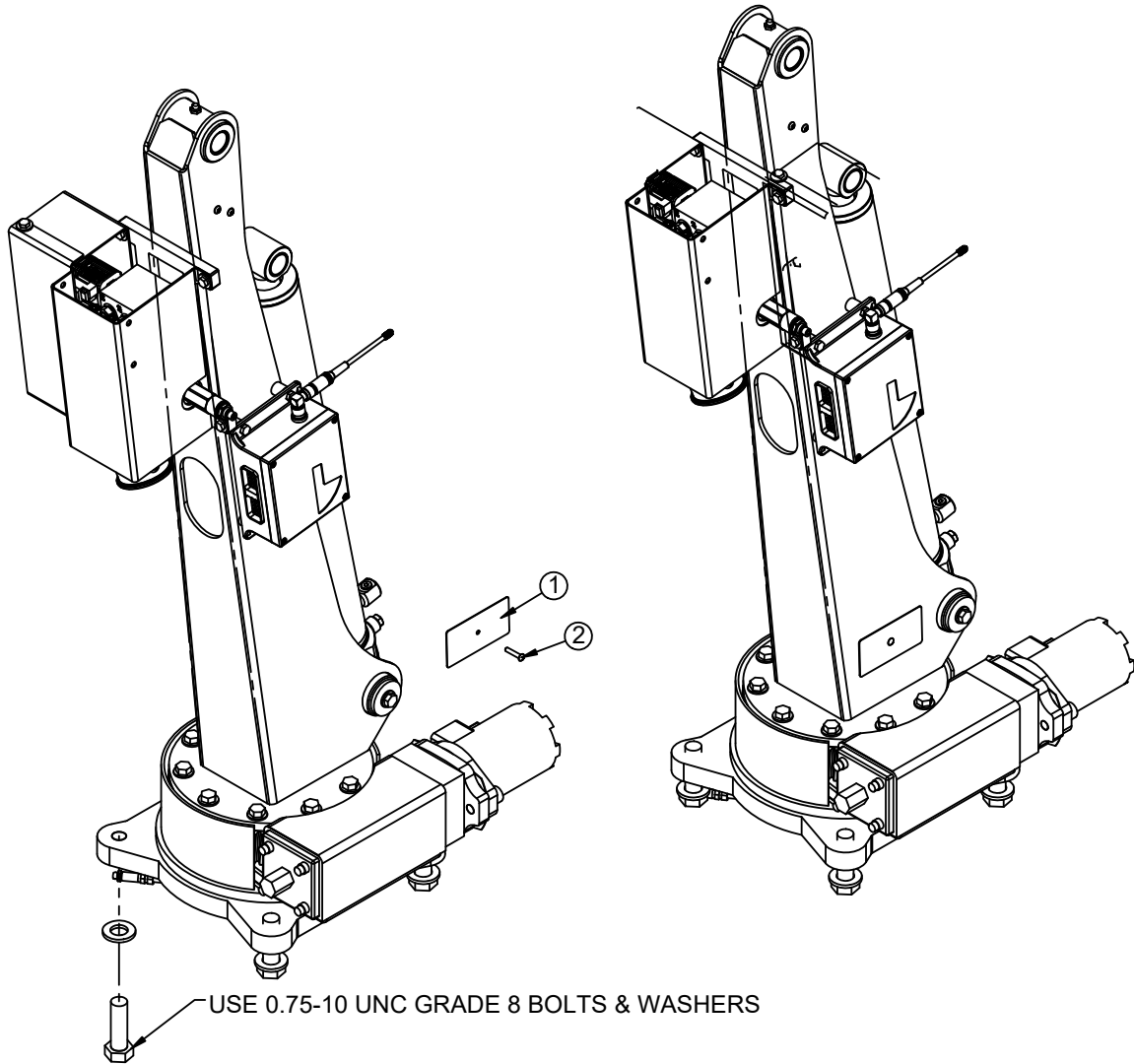
Installation Overview

1. Use the dimensional specifications to properly size and position the crane for mounting.
2. Use the detail on the following page to drill .82" diameter holes into the mounting plate.
3. Use a crane or lifting device capable of lifting the weight of the TC13 (See specifications for shipping weight details).
4. Connect straps or chain from the lifting device to the main boom of the TC13.
5. Remove motor to allow installation of the mounting bolts.
6. Use four (4) 0.75-10 UNC Grade 8 bolts, washers, and nuts. (See install drawing for details)
7. Using the lifting device, lower the TC13 just above the mounting surface and start the bolts.
Have someone assist in leveling the crane.
8. Secure the crane using the mounting hardware provided. Note: longer or shorter bolts may be required – recommended thread engagement into crane base is 0.75" – use grade 8, zinc plated bolts only.
9. Torque the bolts to proper torque.
10. Remove supporting crane.
11. Hook up hydraulics and electrical using the schematics provided later in this chapter.

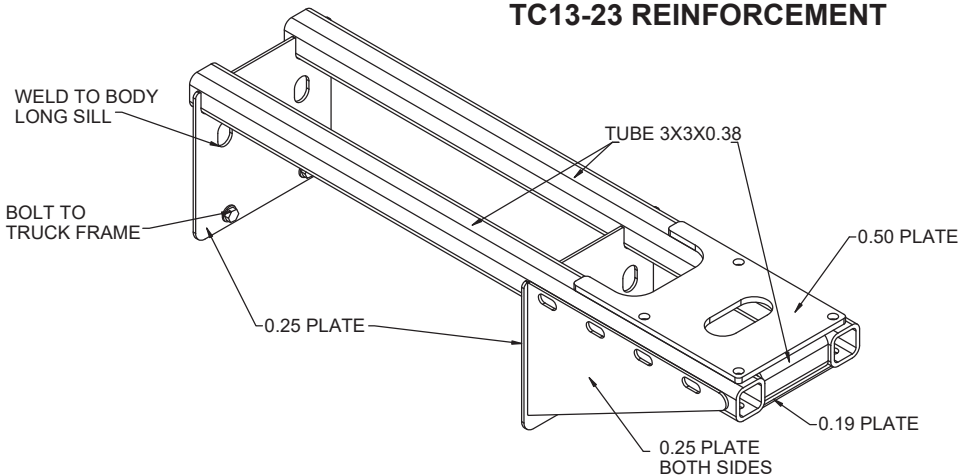
TC13 Mounting Detail



TC13 Installation Drawing - PN 90459



TC13-23 REINFORCEMENT



NOTE:

If it has been determined that the destination body won't support the crane with a fully rated load, the body must be reinforced. Use 1/4" fillet welds and an AWS qualified welder to proceed as shown in this drawing:

TC13 Installation Drawing - PN 90459 Parts List

PN 90450

ITEM	PART	DESCRIPTION	QTY
1	C5942	PLATE SERIAL # TRUCK (NOT SHOWN)	1
2	8176	SCREW DRIVE #4X0.31 RND HD U ZINC	1

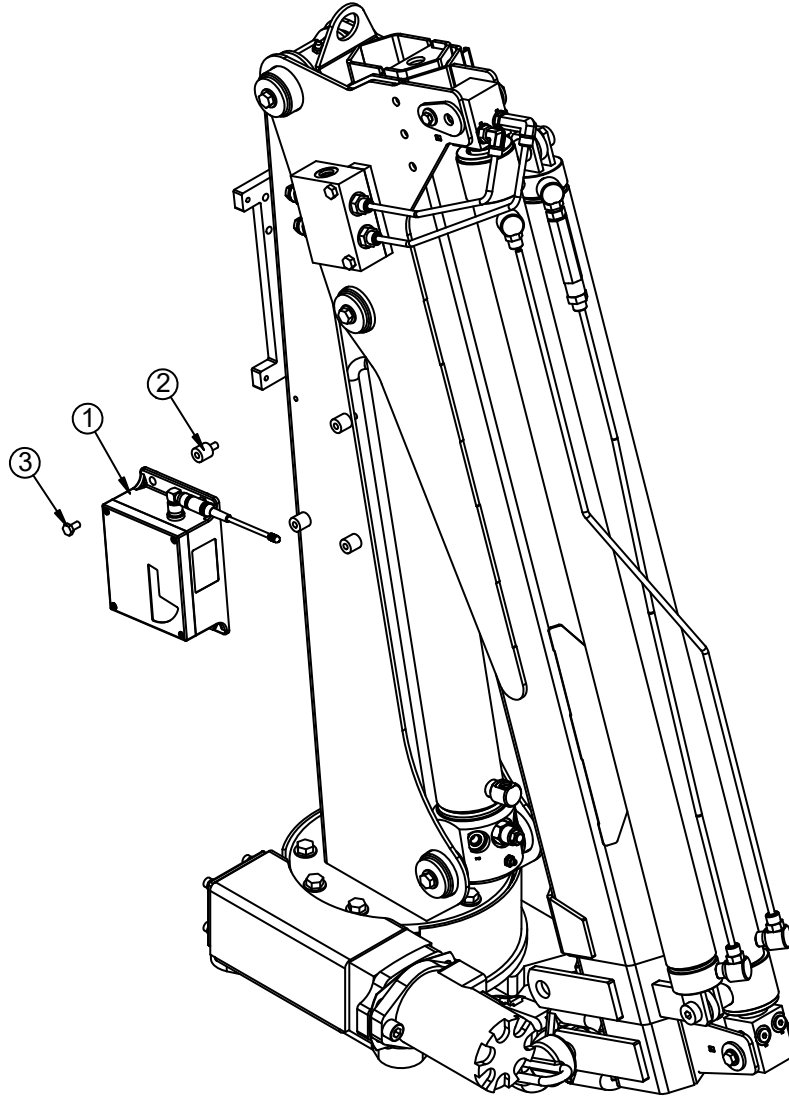
ITEMS NOT SHOWN

PART	DESCRIPTION	QTY
76875	DECAL KIT	1
76483	LEVEL	1
76334	MANUAL KIT	1

NOTES:

LENGTH NOT SPECIFIED DUE TO VARYING MOUNTING REQUIREMENTS.

Control Kit - PN 96174



Control Kit - PN 96174 Parts List

PN 96174

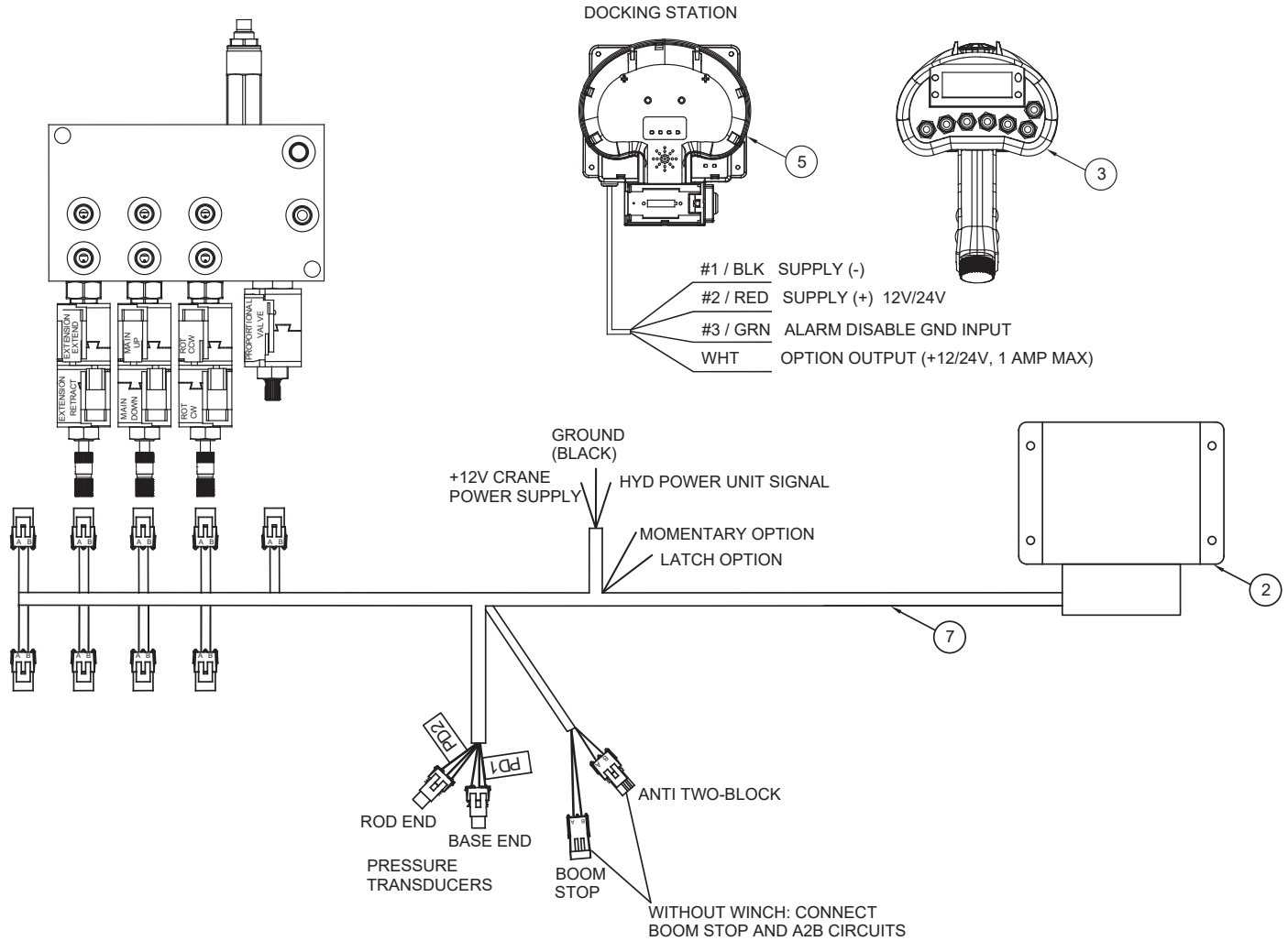
ITEM	PART	DESCRIPTION	QTY
1	96172	RADIO CTRL ASM 7 FCTN CDT TC CRANES V3	1
2	76554	ISOLATOR RUBBER 0.25-20X1.13	4
3	0478	CAP SCR 0.25-20X0.50 HHGR5	4

ITEMS NOT SHOWN

PART	DESCRIPTION	QTY
76678	WIRE HARNESS	1
84201	BACKUP CABLE	1
75105	DOCKING STATION	1

NOTE:
REFER TO INSTRUCTION DRAWING 96175.

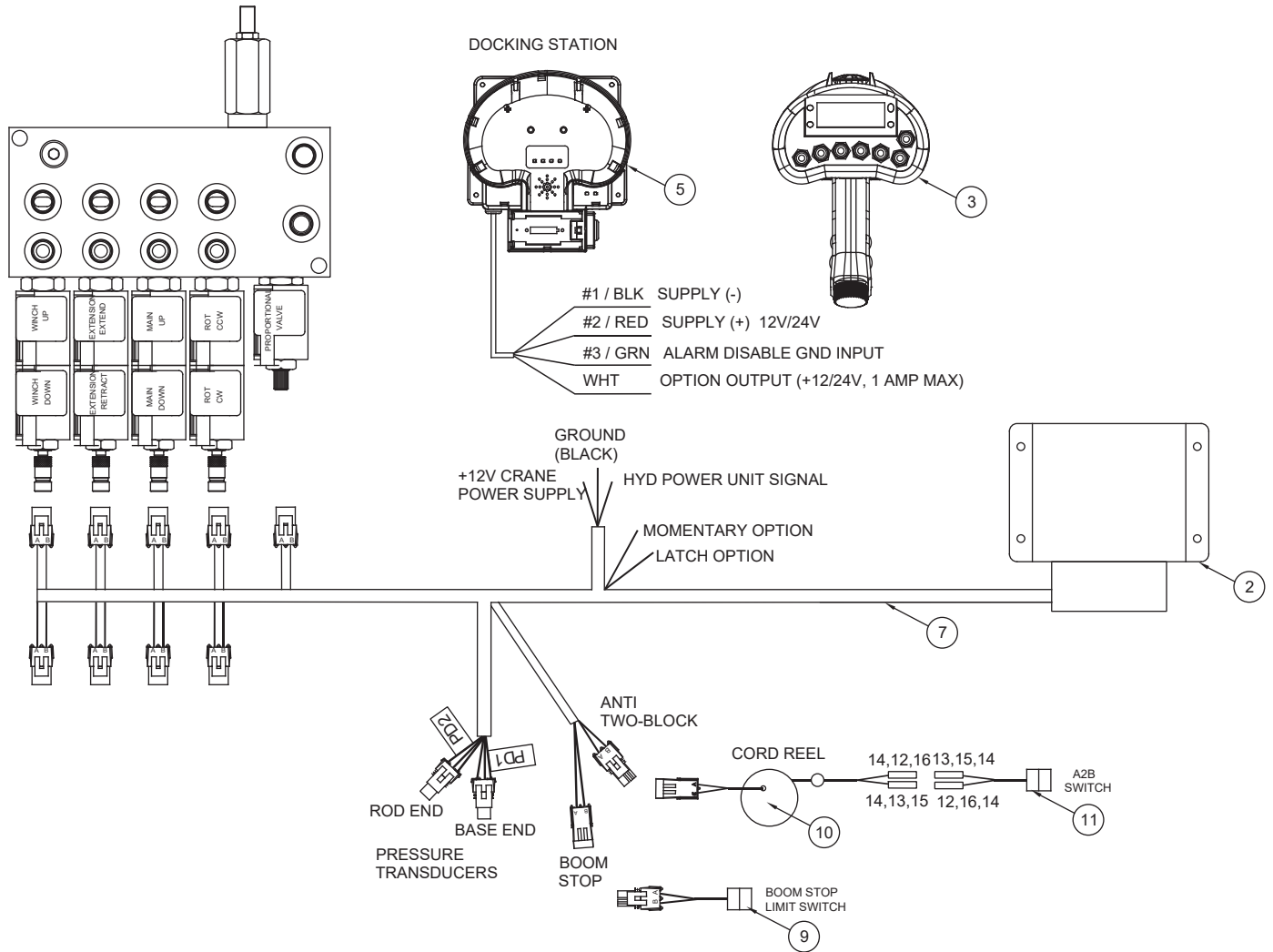
Control Kit Installation Drawing - PN 96175



PN 96175

ITEM	PART	DESCRIPTION	QTY
01	96172	RADIO CONTROLLER ASSEMBLY	1
02		RECEIVER - RADIO (PART OF 1)	REF
03	84200	TRANSMITTER - RADIO (PART OF 1)	REF
04	75104	BATTERY RECHARGEABLE (PART OF 1)	REF
05	75105	DOCKING STATION RADIO TRANS CDT PLUS	1
06	84201	CABLE BACKUP CDTPLUS V2 20M HET	1
07	76678	WIRE HARNESS TBOOM CRANE	1
08	28485	TRANSDUCER PRESSURE 5000PSI #4 SAE	2

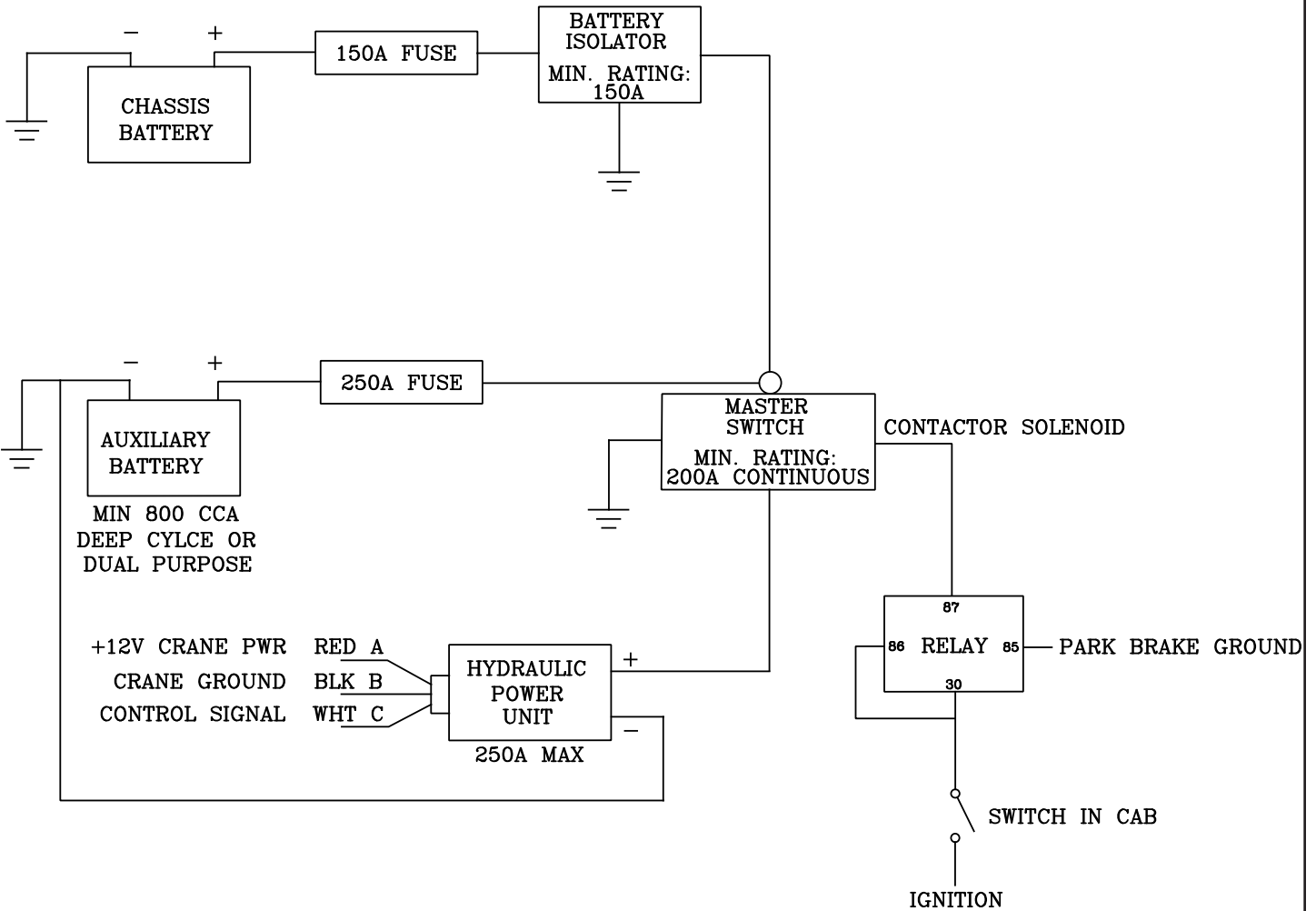
Control Kit w/Winch Installation Drwg - PN 96175 (13/23)



PN 96175 (13/23)

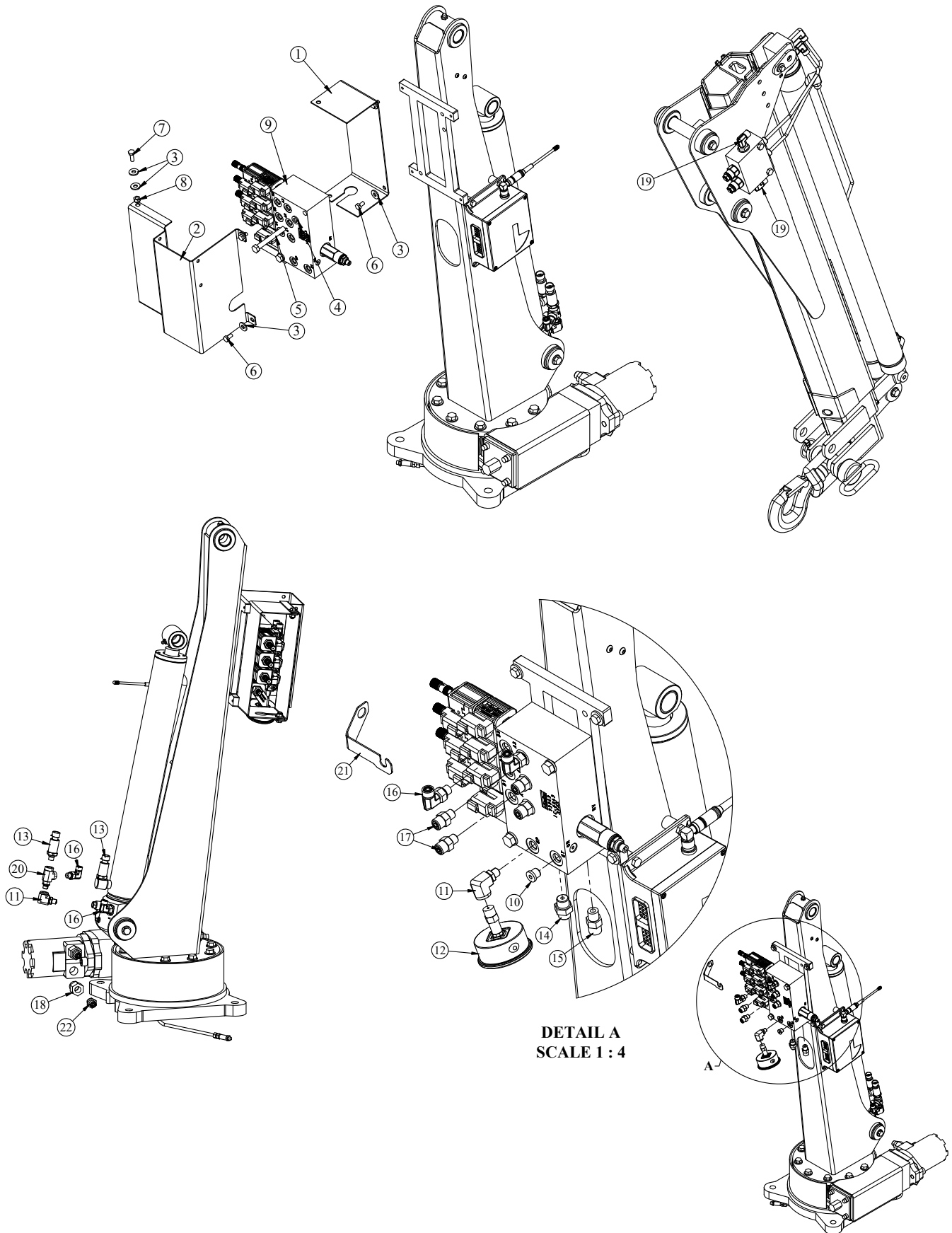
ITEM	PART	DESCRIPTION	QTY
01	96172	RADIO CONTROLLER ASSEMBLY	1
02		RECEIVER - RADIO (PART OF 1)	REF
03	84200	TRANSMITTER - RADIO (PART OF 1)	REF
04	75104	BATTERY RECHARGEABLE (PART OF 1)	REF
05	75105	DOCKING STATION RADIO TRANS CDT PLUS	1
06	84201	CABLE BACKUP CDTPLUS V2 20M HET	1
07	76678	WIRE HARNESS TBOOM CRANE	1
08	28485	TRANSDUCER PRESSURE 5000PSI #4 SAE	2
09	25440	SWITCH LIMIT (NC) ROLLER LVR RT BRKT E1117	1
10	72602	CORD REEL ASM 15/20/21 FT CRANE	1
11	11938	SWITCH LIMIT A2B F3SE3170	1
12	12173	CONNECT 1P SHRD WEATHER PACK	2
13	12174	CONNECT 1P TWR WEATHER PACK	2
14	8384	CABLE SEAL 18-16GA GREEN METRI-PACK 280	4
15	8383	CONTACT F 20-18GA WEATHER-PACK	2
16	9756	CONTACT M 20-18GA WEATHER-PACK1	2

TC Series Wiring Diagram



This page left intentionally blank.

Hydraulic Kit - PN 96494



DETAIL A
SCALE 1:4

Hydraulic Kit - PN 96494 Parts List

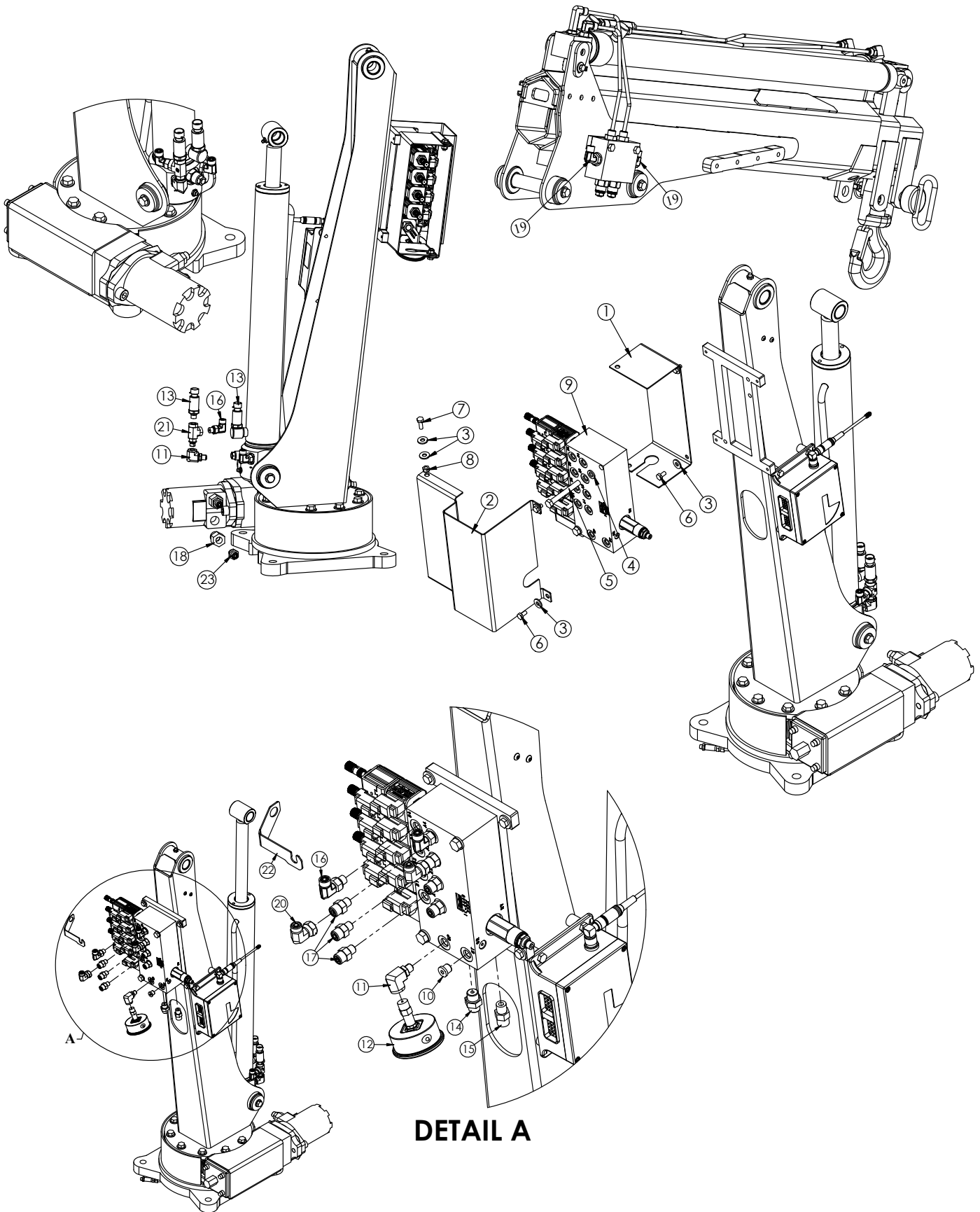
PN 96494			
ITEM	PART	DESCRIPTION	QTY
1	73946	COVER BACK TC CRANES	1
2	73947	COVER FRONT TC CRANES	1
3	0340	WASHER 0.25 USS FLAT	8
4	0523	WASHER 0.38 LOCK	2
5	C0949	CAP SCR 0.38-16X3.00 HHGR5	2
6	0478	CAP SCR 0.25-20X0.50 HHGR5	4
7	0479	CAP SCR 0.25-20X0.75 HHGR5	2
8	0333	NUT 0.25-20 HHGR5 NYLOC	2
9	73943	VB 3 SECT W/PROP STER4GPM-8 VALVE DEUTSCH	1
10	D0511	FTG 4 MORB PLUG HOLLOW HEX	1
11	51817	FTG 4-4 MAORB-FORB 90	2
12	39780	GAUGE OIL LF 2.5 0-6000 CBM SAE	1
13	28485	TRANSDUCER PRESSURE 5000 PSI	2
14	C4922	FTG 4-6 MFS-MORB STRAIGHT	1
15	0279	FTG 6-6 MFS-MORB STRAIGHT	1
16	C1198	FTG 4-4 MFS-MAORB 90	4
17	D1291	FTG 4-4 MFS-MORB STRAIGHT	4
18	C1111	FTG 10-6 MORB-FORB STRAIGHT REDUCER	2
19	3338	FTG 4-6 MFS-MAORB 90	2
20	96171	FTG 4-4-4 MAORB-FORB-FORB TEE	1
21	85930	STRAP VALVE RETAINING	1
22	108534	FTG 4-6 MFS-MORB STRAIGHT .046 ORIFICE BLK	2

REV. C

ITEMS NOT SHOWN		
PART	DESCRIPTION	QTY
90462	HOSE KIT TC13	1
32302	FTG 4-4 MFS-MFS SWIVEL STRAIGHT X 1	1
12171	FTG 6-6 MFS-MFS SWIVEL STRAIGHT X 1	1
0882	FTG 6 FFS CAP X 1	1
C2032	FTG 4 FFS CAP X 1	1

NOTES:
REFER TO INST DRAWING 90469
85930 STRAP SHOWN FOR REFERENCE.

Hydraulic Kit w/Winch - PN 96495



Hydraulic Kit w/Winch - PN 96495 Parts List

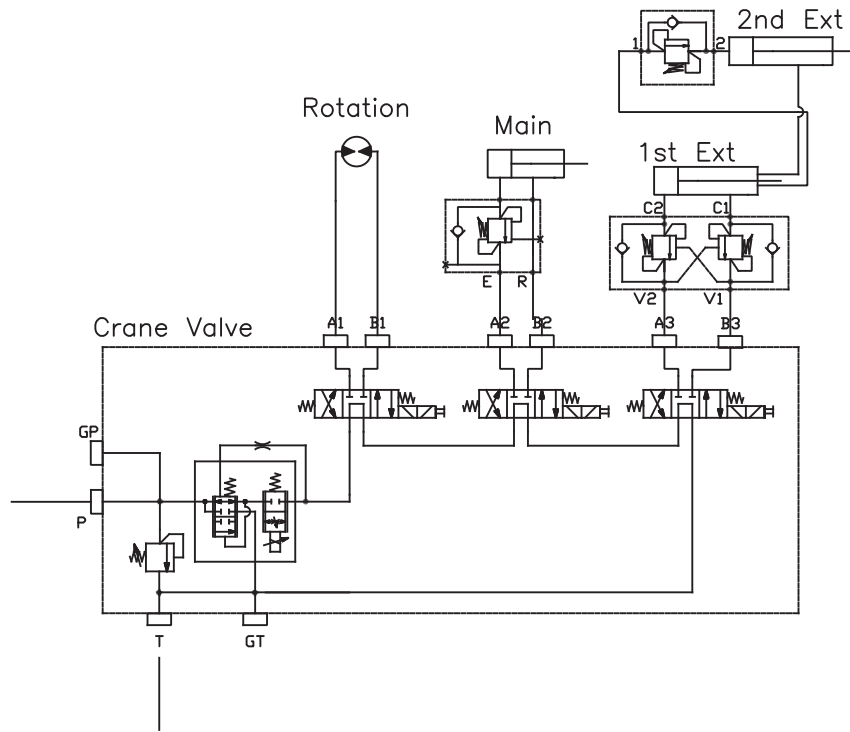
PN 96495			
ITEM	PART	DESCRIPTION	QTY
1	73946	COVER BACK TC CRANES	1
2	73947	COVER FRONT TC CRANES	1
3	0340	WASHER 0.25 USS FLAT	8
4	0523	WASHER 0.38 LOCK	2
5	C0949	CAP SCR 0.38-16X3.00 HHGR5	2
6	0478	CAP SCR 0.25-20X0.50 HHGR5	4
7	0479	CAP SCR 0.25-20X0.75 HHGR5	2
8	0333	NUT 0.25-20 HHGR5 NYLOC	2
9	72666	VB 4 SECT W/PROP STER4GPM-8 VALVE DEUTSCH	1
10	D0511	FTG 4 MORB PLUG HOLLOW HEX	1
11	51817	FTG 4-4 MAORB-FORB 90	2
12	39780	GAUGE OIL LF 2.5 0-6000 CBM SAE	1
13	28485	TRANSDUCER PRESSURE 5000 PSI	2
14	C4922	FTG 4-6 MFS-MORB STRAIGHT	1
15	0279	FTG 6-6 MFS-MORB STRAIGHT	1
16	C1198	FTG 4-4 MFS-MAORB 90	4
17	D1291	FTG 4-4 MFS-MORB STRAIGHT	6
18	C1111	FTG 10-6 MORB-FORB STRAIGHT REDUCER	2
19	3338	FTG 4-6 MFS-MAORB 90	2
20	D1314	FTG 4-4 MFS-FFSS 90	2
21	96171	FTG 4-4-4 MAORB-FORB-FORB TEE	1
22	85930	STRAP VALVE RETAINING	1
23	108534	FTG 4-6 MFS-MORB STRAIGHT .046 ORIFICE BLK	2
REV. D			

ITEMS NOT SHOWN		
PART	DESCRIPTION	QTY
90462	HOSE KIT TC13	1
97657	HOSE KIT WINCH TC13	1
32302	FTG 4-4 MFS-MFS SWIVEL STRAIGHT X 1	1
12171	FTG 6-6 MFS-MFS SWIVEL STRAIGHT X 1	1
0882	FTG 6 FFS CAP X 1	1
C2032	FTG 4 FFS CAP X 1	1
C4922	FTG 4-6 MFS-MORB STRAIGHT	2

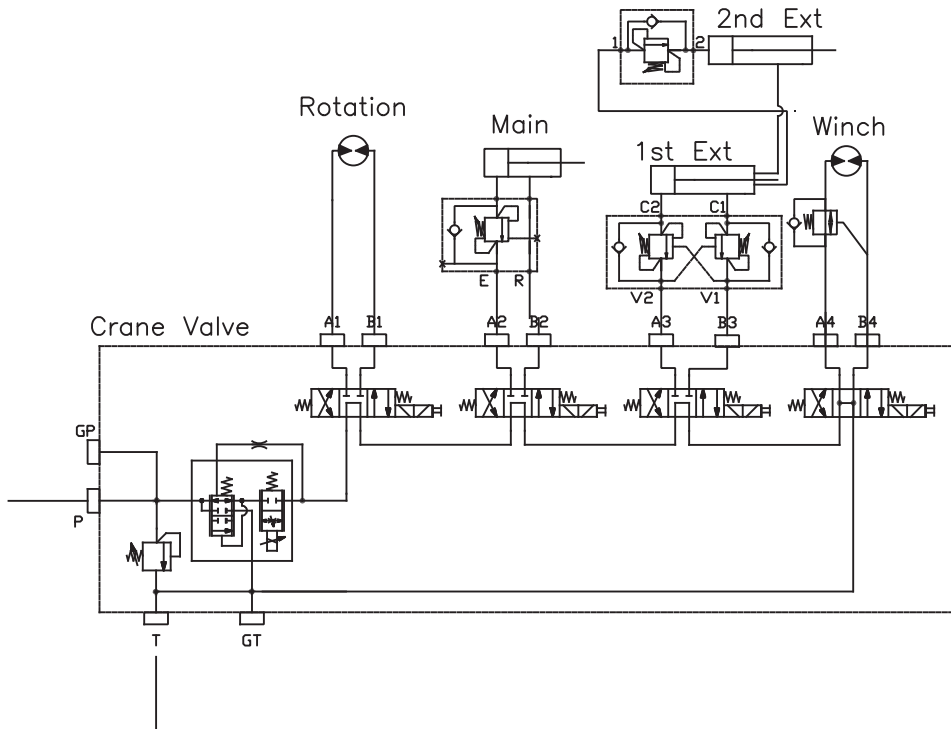
NOTES;
REFER TO INST DRAWING 94137.
85930 STRAP SHOWN FOR REFERENCE.

TC13 Hydraulic Schematic

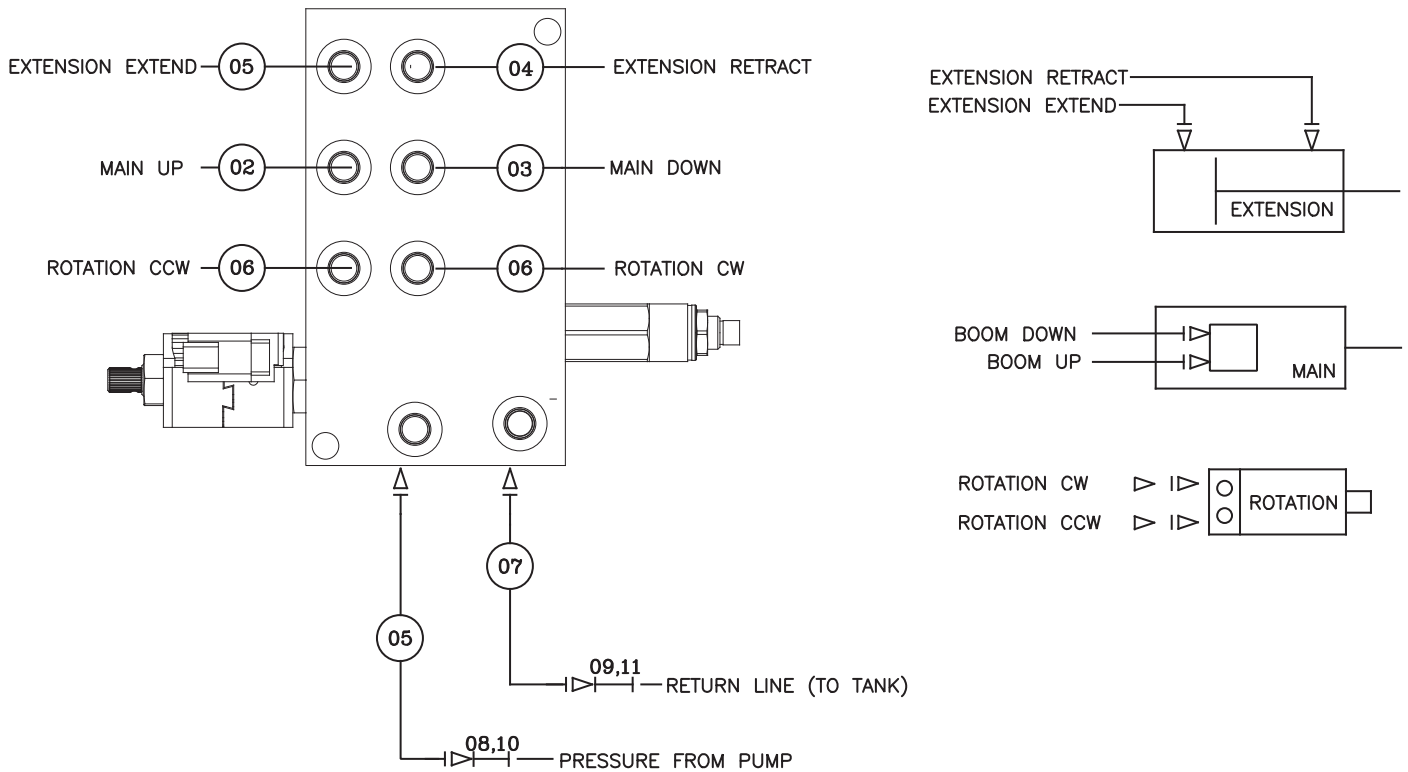
TC Standard



TC with Winch



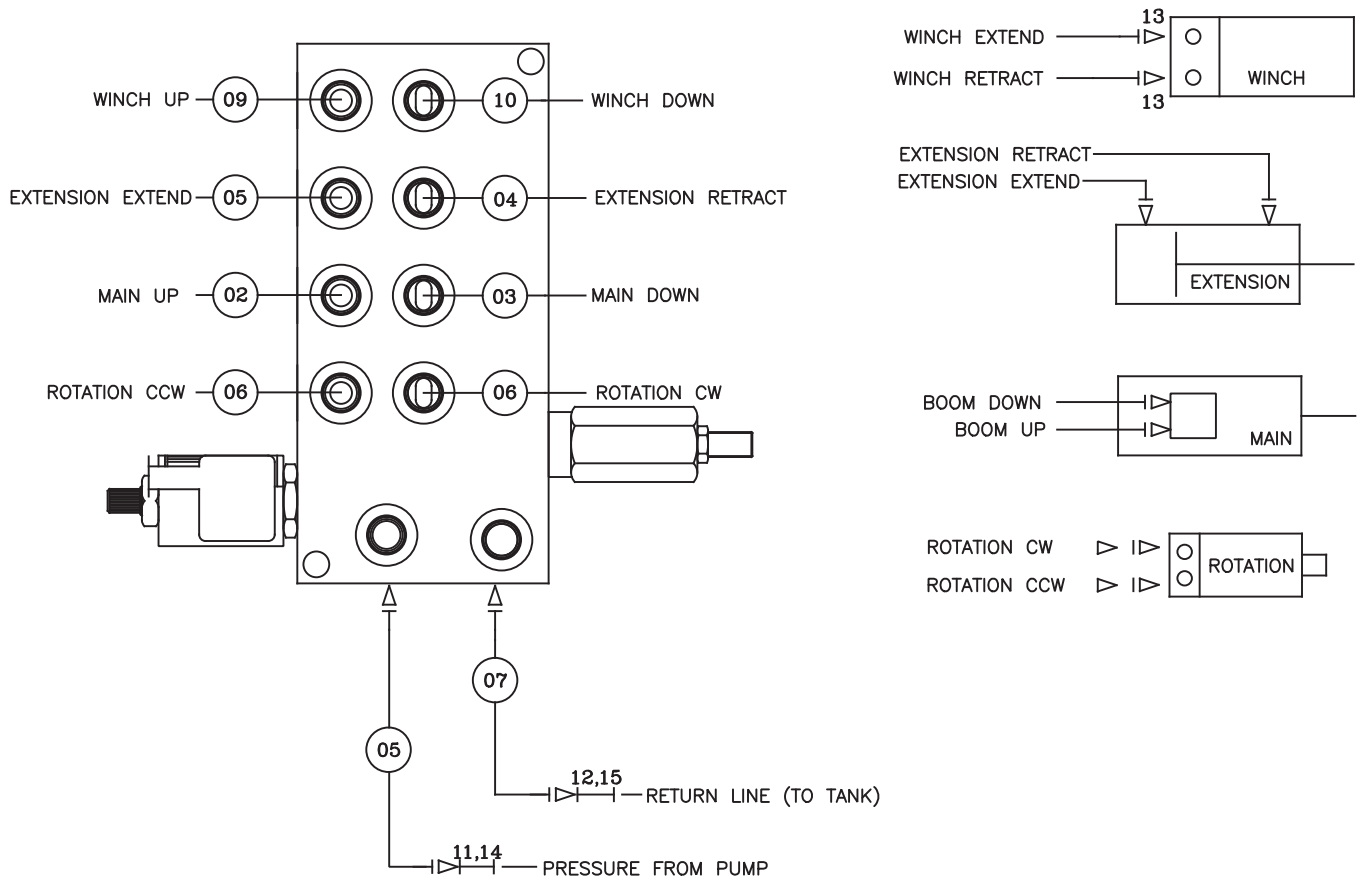
Hydraulic Kit Installation Drawing - PN 90469



PN 90469			
ITEM	PART	DESCRIPTION	QTY
01	90462	HOSE KIT TC13 (INCL: 2-7)	1
02	90463	HOSE-HYD .25 X 38	1REF
03	90464	HOSE-HYD .25 X 40	1REF
04	90465	HOSE-HYD .25 X 28	1REF
05	90466	HOSE-HYD .25 X 34	2REF
06	90467	HOSE-HYD .25 X 54	2REF
07	90468	HOSE-HYD .38 X 34	1REF
08	32302	FTG 4-4 MFS-MFS SWIVEL STRAIGHT X 1	1
09	12171	FTG 6-6 MFS-MFS SWIVEL STRAIGHT X 1	1
10	C2032	FTG 4 FFS CAP X 1	1
11	0882	FTG 6 FFS CAP X 1	1
REV. A			

NOTE:
USE HOSE PROTECTOR P/N 4043 OVER ALL HOSES.

Hyd. Kit w/ Winch Installation Drawing - PN 94137

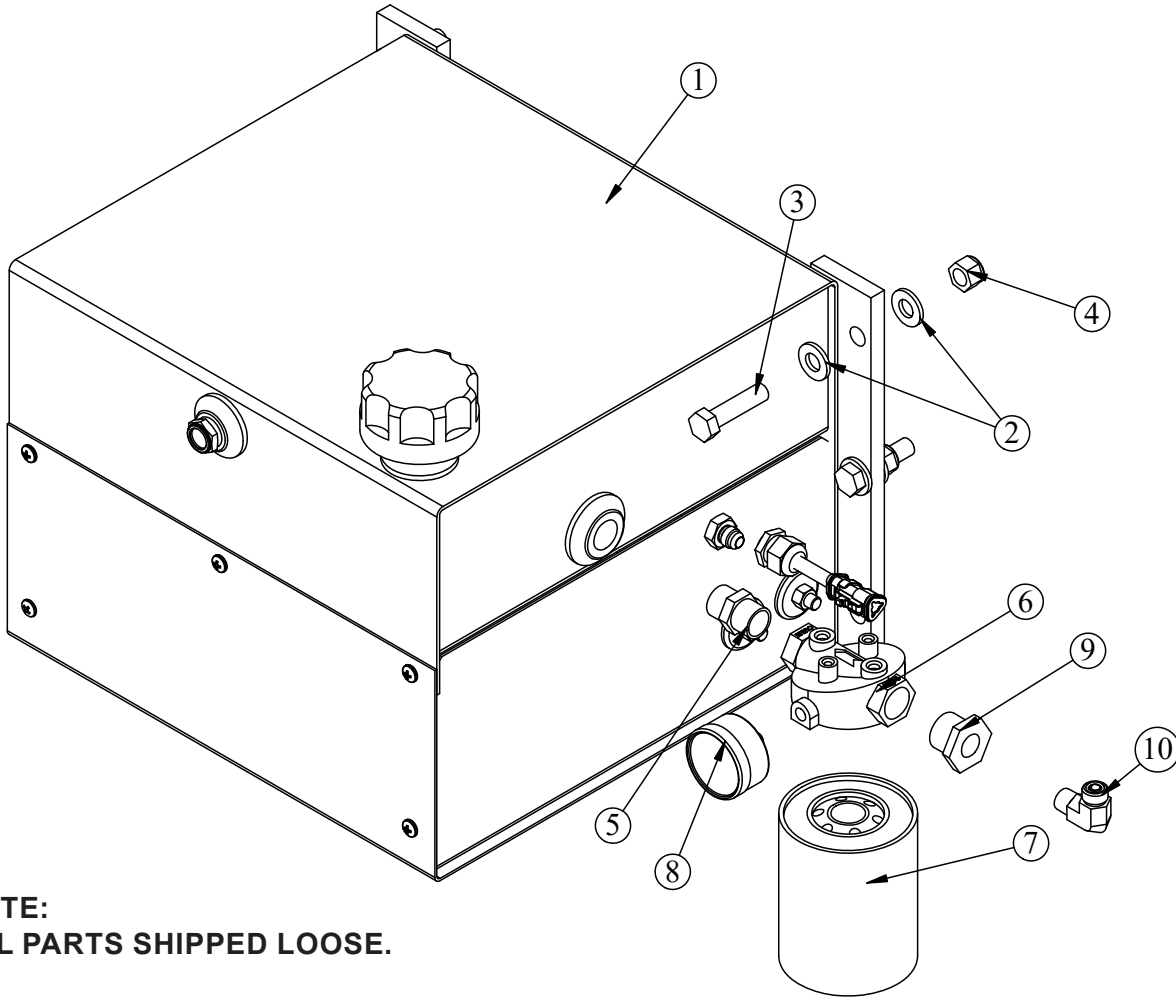


PN 90469

ITEM	PART	DESCRIPTION	QTY
01	90462	HOSE KIT TC13 (INCL: 2-7)	1
02	90463	HOSE-HYD .25 X 38	1REF
03	90464	HOSE-HYD .25 X 40	1REF
04	90465	HOSE-HYD .25 X 28	1REF
05	90466	HOSE-HYD .25 X 34	2REF
06	90467	HOSE-HYD .25 X 54	2REF
07	90468	HOSE-HYD .38 X 34	1REF
08	97657	HOSE KIT WINCH TC13 (INCL: 9-10)	1
09	112071	HOSE-HYD .25 X 50	1REF
10	94136	HOSE-HYD .25 X 50	1REF
11	32302	FTG 4-4 MFS-MFS SWIVEL STRAIGHT X 1	1
12	12171	FTG 6-6 MFS-MFS SWIVEL STRAIGHT X 1	1
13	C4922	FTG 4-6 MFS-MORB STRAIGHT	2
14	C2032	FTG 4 FFS CAP X 1	1
15	0882	FTG 6 FFS CAP X 1	1

REV. A

Optional Power Unit Assembly - PN 77897



NOTE:
ALL PARTS SHIPPED LOOSE.

PN 77897

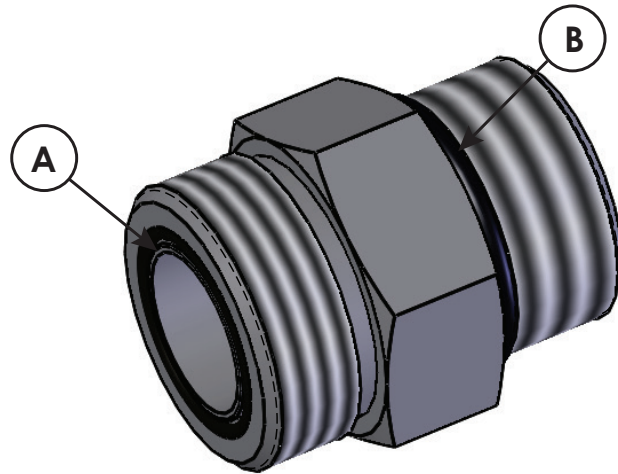
ITEM	PART	DESCRIPTION	QTY
1	77896	POWER UNIT 12V 2.5GPM 4 GAL RSRVR	1
2	D0790	WASHER 0.50 SAE FLAT YELLOW GR8	8
3	8833	CAP SCR 0.50-13X2.00 HHGR8	4
4	5468	NUT 0.50-13 HHGR8 NYLOC	4
5	C6162	FTG 12-12 MP-MP HEX NIPPLE STRAIGHT	1
6	C6226	FILTER HEAD 25GPM .75FNPT	1
7	C6227	FILTER SHORT ZAE-10	1
8	16145	GAUGE PRES FILTER SERVICE CI20	1
9	C1125	FTG 12-6 MP-FP REDUCER BUSHING	1
10	54938	FTG 6-6 MFS-MP 90	1

REV A

ITEMS NOT SHOWN

PART	DESCRIPTION	QTY
78242	WIRE HARNESS TC POWER UNIT	1
78243	WIRE HARNESS TC POWER UNIT OVERRIDE	1

Face Seal/O-Ring Size Chart



Hose Size	Fitting Size	Face Seal (A) Stellar® PN	O-ring Boss (B) Stellar® PN
1/4"	#4	C2027	D1245
3/8"	#6	C2028	D1246
1/2"	#8	C2029	D1247
5/8"	#10	32223	D1248
3/4"	#12	D1244	D1249
1"	#16		D1250

Stability Procedure

Definition of Stability for the Stellar® Telescopic Crane Products:

A truck is stable until the load cannot be lifted off the ground with the winch, without tipping over the truck. Every Stellar® Crane installed must be tested for stability to determine the actual load capacity of the final truck package. The actual test data must be recorded and supplied with the truck at the time of in-service and should be kept with the truck at all times. The following procedure will test the truck package for stability and will provide a stability capacity chart. The load limit information shown on the stability capacity chart is formulated on 85% tipping.

Set Up:

1. Locate the truck on a test course in position for loading and engage travel brakes.
2. Set stabilizers so that they make contact with firm, level footing.
3. Operate the crane under partial load to assure operator proficiency and proper machine function.
4. Put the radio into Stability Test Mode:
 - A. Push the bottom four switches up and hold until all lights come on (approximately 5 seconds.)
 - B. At this point, the crane will have enough capacity to handle the weight for the stability test.
 - C. The radio will timeout of stability mode after 30 minutes or when the E-Stop button is pushed.



NOTICE:

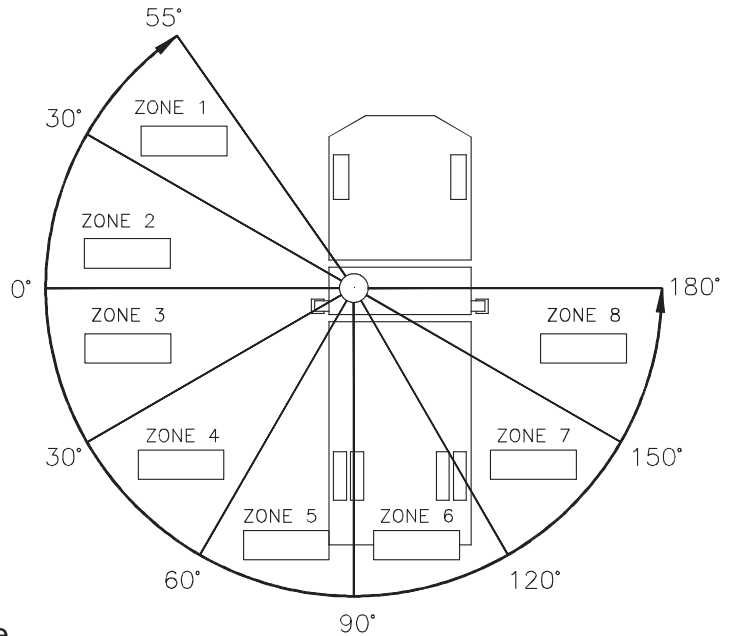
THE RADIO CAN ONLY BE PUT INTO STABILITY MODE FIVE TIMES. AFTER THAT, THE RADIO WOULD HAVE TO BE RETURNED TO STELLAR TO BE REPROGRAMMED TO ALLOW ADDITIONAL STABILITY TESTING. ALL OTHER RADIO FUNCTIONS WILL WORK PROPERLY EVEN IF STABILITY MODE IS NOT AVAILABLE.

Stability Procedure Continued...

TC13 Stability Data		
Model	Max Horiz. Reach	Test Weight
TC13		

Test Procedure

1. Rotate the crane into Zone 1 position.
2. With the crane fully retracted and the boom horizontal, winch the test weight off the ground. Note: Keep weight within six inches of the ground at all times.
3. Extend the boom outward until full extension has been reached or until the truck becomes unstable (Again, use the winch to keep the weight within six inches of the ground.)
4. If the boom goes full extension without becoming unstable, the crane is termed stable for this zone and 100% can be written in the Zone 1 data box.
5. If the truck becomes unstable prior to going full extension, retract the boom until the truck becomes stable and measure the horizontal reach in this position (center of rotation to boom tip). This is the stable horizontal reach for this zone. Stable horizontal reach divided by Maximum horizontal reach multiplied by 100 equals the percentage of rated capacity for this zone. Use the following formula to determine the percentage of rated capacity:



$$\frac{\text{Stable Horizontal Reach}}{\text{Max Horizontal Reach}} \times 100 = \text{Percentage of Rated Capacity}$$

6. Record this number in the data box for Zone 1. This is the revised capacity due to stability for this zone.
7. Repeat this procedure for each zone until the worksheet is completed.
8. This is the revised capacity based on stability of this package.

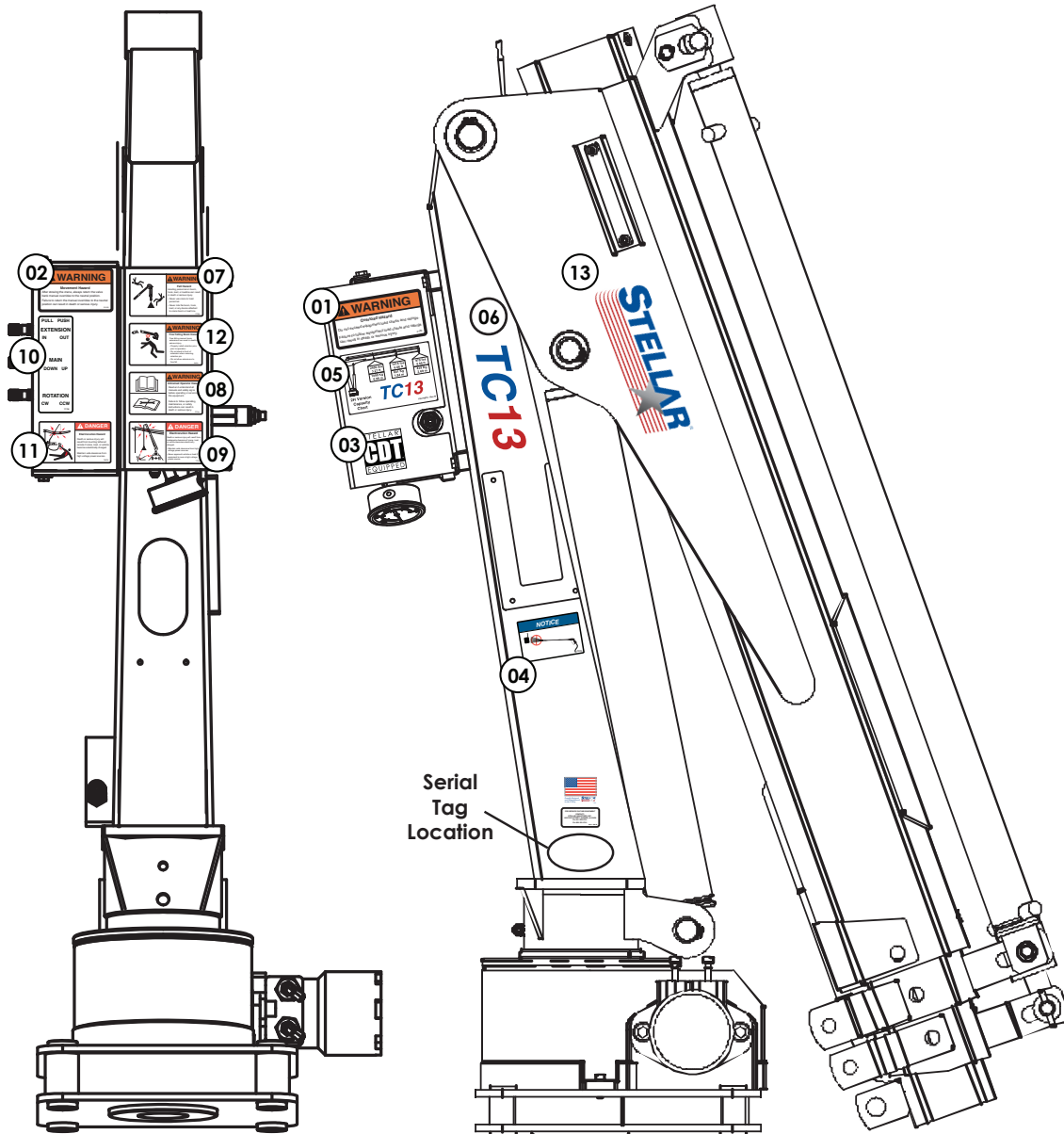
Crane Load Level Indicator

Stellar® Cranes are shipped with a load level indicator that is used to determine if the truck is level (side to side) before using the crane to pick/move a load. This level should be installed in the isolated crane compartment of the body. If level indicator is missing or damaged, please contact Stellar Customer Support for a replacement.



PN 76483

Decal Placement - PN 76875



PN 76875
Rev E - 03/28/23

For use with Crane Package

ITEM	PN	DESCRIPTION	LOCATION	QTY
01	4189	DECAL WARNING OVERLOAD	On mast valve bank cover - side	1
02	25159	DECAL WARNING MANUAL OVERRIDES	On mast next to valve bank controls	1
03	54588	DECAL CDT 2.00 x 2.00	On mast valve bank cover - side	1
04	73929	DECAL PRESSURE WASH	On mast under receiver box	1
05	76879	DECAL CAPACITY TC13 2H	On mast valve bank cover - side	1
06	103424	DECAL IDENTIFICATION TC13	On mast above receiver box - both sides	2
07	77733	DECAL WARNING HOISTING PERSONNEL	On mast valve bank cover - back	1
08	77734	DECAL WARNING UNTRAINED OPERATOR	On mast valve bank cover - back	1
09	77735	DECAL DANGER ELECTROCUTION SMALL	On mast valve bank cover - back	1
10	77736	DECAL VB 3 SECTION TC	On mast next to valve bank controls	1
11	78078	DECAL DANGER ELECTROCUTION REMOTE 2.00 X 3.50	On mast next to valve bank controls	1
12	78079	DECAL WARNING MANUAL EXT 2.00 X 3.50	On mast valve bank cover - back	1
13	98974	STELLAR LOGO	Crane boom - both sides	2
14	35234	DECAL STELLAR MADE IN THE USA	On mast side	1
15	4214	DECAL CONTACT STELLAR	On mast side	1
16*	C4545	DECAL DANGER ELECTROCUTION LARGE	Four corners of the body/chassis	4

* Not shown.

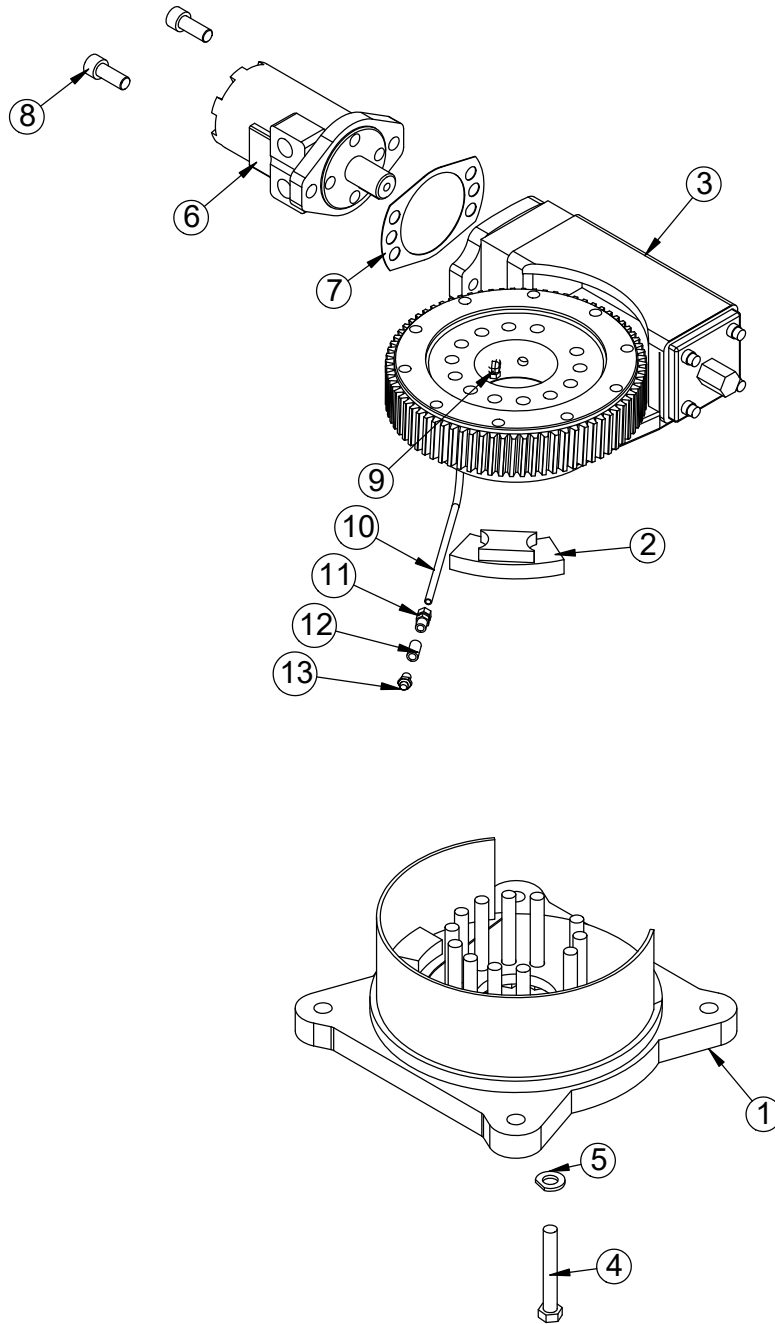
This page left intentionally blank.

Chapter 3 - Assembly Drawings

CHAPTER CONTENTS

Base Assembly - PN 53392.....	32
Base Assembly - PN 53392 Part List.....	33
Lift Cylinder Assembly - PN 23462.....	34
Lift Cylinder Assembly - PN 23462 Parts List.....	35
Base Asm 18" Drop Forks - PN 130151.....	36
18" Drop Forks.....	36
Base Asm 18" Drop Forks - PN 130151 Parts List.....	37
Lift Cyl Asm 18" Drop Forks - PN 130152.....	38
Lift Cyl Asm 18" Drop Forks - PN 130152 Parts List.....	39
Tilt Cylinder Assembly - PN 53242.....	40
Tilt Cylinder Assembly - PN 53242 Parts List.....	41
Lift Frame Assembly - PN 52927.....	42
Lift Frame Assembly - PN 52927 Parts List.....	43
Lift Frame Asm 18" Drop Forks - PN 130241.....	44
Lift Frame Asm 18" Drop Forks - PN 130241 Parts List.....	45
Extendable Fork Frame Assembly - PN 57775.....	46
Extendable Fork Frame Assembly - PN 57775 Parts List.....	47
Adjustable Fork Frame Assembly - PN 58145.....	48
Adjustable Fork Frame Assembly - PN 58145 Parts List.....	49
Fork Frame Assembly - PN 51308.....	50
Fork Frame Assembly - PN 51308 Part List.....	51
Fork Frame Assembly 8" Drop Forks - PN 67322.....	52
Fork Frame Assembly 8" Drop Forks - PN 67322 Parts.....	53
Fork Frame Asm 18" Drop Forks - PN 79374.....	54
Fork Frame Asm 18" Drop Forks - PN 79374 Parts List.....	55
Reservoir Assembly - PN 53704.....	56
Reservoir Assembly - PN 53704 Parts List.....	57
Reservoir Assembly (VB Details) - PN 53704.....	58
Reservoir Assembly (VB Details) - PN 53704 Parts List.....	59
Reservoir Assembly (Decal Details) - PN 53704.....	60
Reservoir Assembly (Port Tubes) - PN 53704.....	61
Reservoir Assembly - PN 53809.....	62
Reservoir Assembly - PN 53809.....	63
Reservoir Assembly (VB Details) - PN 53809.....	64
Reservoir Assembly (VB Details) - PN 53809 Parts List.....	65
Reservoir Assembly (Decal Details) - PN 53809.....	66
Reservoir Assembly (Port Tubes) - PN 53809.....	67
Reservoir Assembly - PN 98545.....	68
Reservoir Assembly - PN 98545 Parts List.....	69
Fender Kit Assembly - PN 80045.....	70
Fender Kit Assembly - PN 80045 Parts List.....	71

Base Assembly - PN 88695



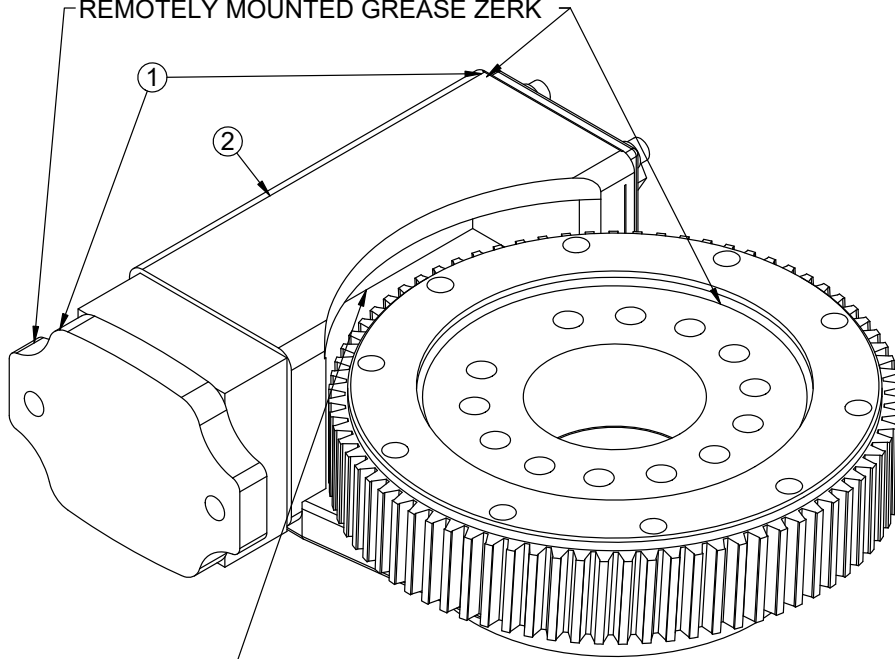
Base Assembly - PN 88695 Parts List

PN 88695			
ITEM	PART	DESCRIPTION	QTY
1	88882	BASE TC13	1
2	42795	STOP SLIDING EC3200	1
3	41640	BEARING SWING DRIVE 170-00058-1	1
4	30750	CAP SCR 0.50-13X3.50 HHGR8	13
5	105771	WASHER 0.50 SAE FLAT YELLOW GR8 CLIPPED	13
6	109358	MOTOR 50CC 1 IN KEYED ROT FLANGE PNT BLK	1
7	21151	GASKET MOTOR 008-10056-1	1
8	D1307	CAP SCR 0.50-13X1.25 SHGR8 W/ RED PATCH	2
9	D0240	FTG 4-2 CPRSN-MP 90	1
10	D1810	TBE AIR SAEJ844 TYPE A .25 (RM)	2.33
11	D1345	FTG CPRSN 0.12NPT/0.25 TUBE	1
12	22161	FTG 2-2 FP-FP COUPLER STRAIGHT BRASS	1
13	56589	ZERK 1/8 NPT STRAIGHT LONG THREAD	1
REV. C			

Gear Bearing Assembly - PN 41640

USE EP2 LITHIUM COMPLEX GREASE, STELLAR PN 78090
ON WORM BEARINGS AND BEARING RACE

GREASE MAIN BEARING RACE THROUGH
REMOTELY MOUNTED GREASE ZERK



USE MOLY GREASE 936SF HEAVY, STELLAR PN 4460
ON WORM AND BEARING GEAR TEETH

PN 41640

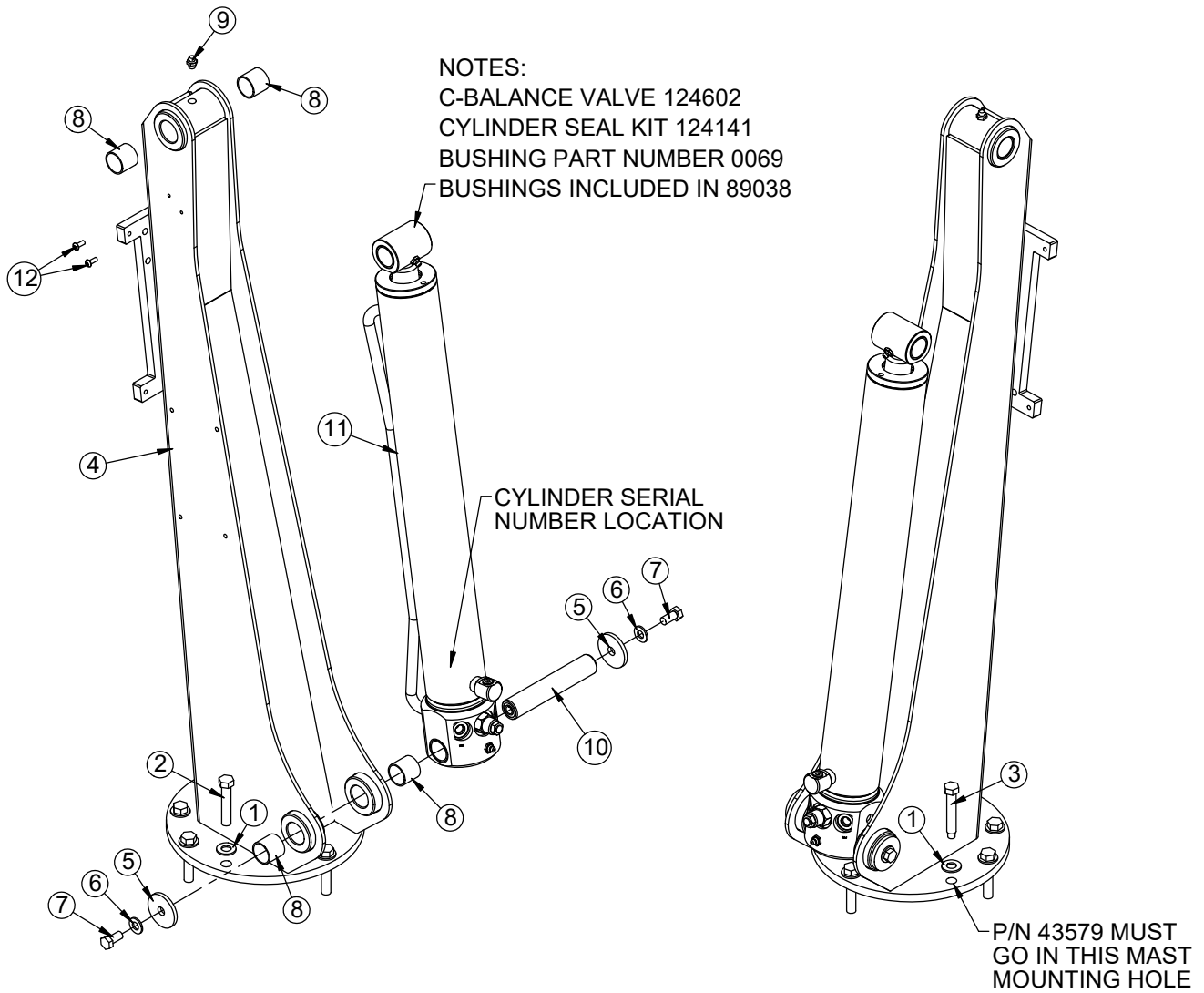
ITEM	PART	DESCRIPTION	QTY
1	44383	BEARING AND SEAL KIT EC3200 GP	1
2	44375	WORM EC3200 GEAR PROD 170-10081-1	1

PN 41640

ITEM	PART	DESCRIPTION	QTY
1	77737	BEARING AND SEAL KIT EC3200 KNMTS	1
2	77738	WORM EC3200 KNMTS	1

This page left intentionally blank.

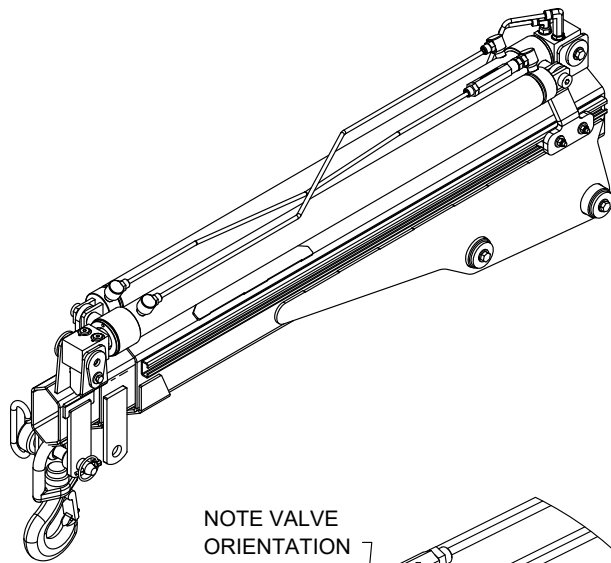
Mast Assembly - PN 88884



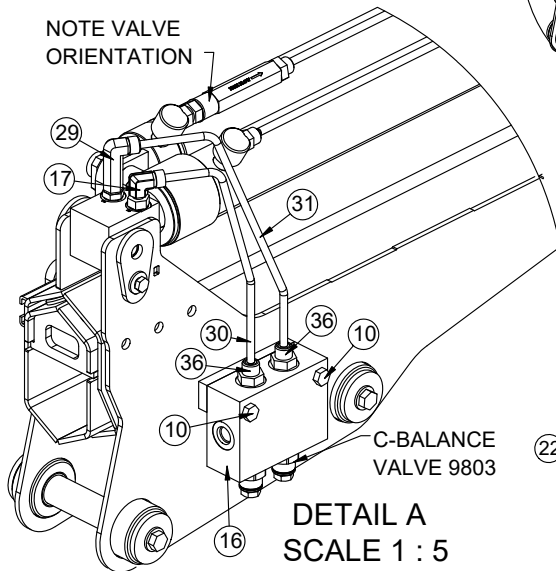
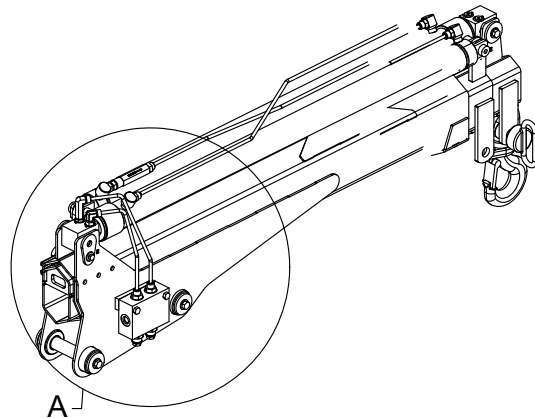
Mast Assembly - PN 88884 Parts List

PN 88884			
ITEM	PART	DESCRIPTION	QTY
1	42788	WASHER 0.44 SAE FLAT YELLOW GR8	8
2	42789	CAP SCR 0.44-14X2.25 HHGR8 ZY	7
3	43579	CAP SCR 0.44-14X2.63 EC3200 STOP	1
4	88885	MAST TC13	1
5	9320	PIN CAP 0.44X1.75X0.19 YZ	2
6	C6353	WASHER 0.38 SAE FLAT YELLOW GR8	2
7	9843	CAP SCR 0.38-16X0.75 HHGR8	2
8	0069	BUSHING BPC16DXR16 1.00X1.00	4
9	C1592	ZERK 1/8 NPT STRAIGHT	1
10	88937CR	PIN 1.00X5.38 D&T ZC	1
11	89038	CYLINDER 2.50X18.13	1
12	D1711	CAP SCR #10-24X0.50 BTNHD SS	2
REV. A			

Boom Assembly (No Winch) - PN 88944

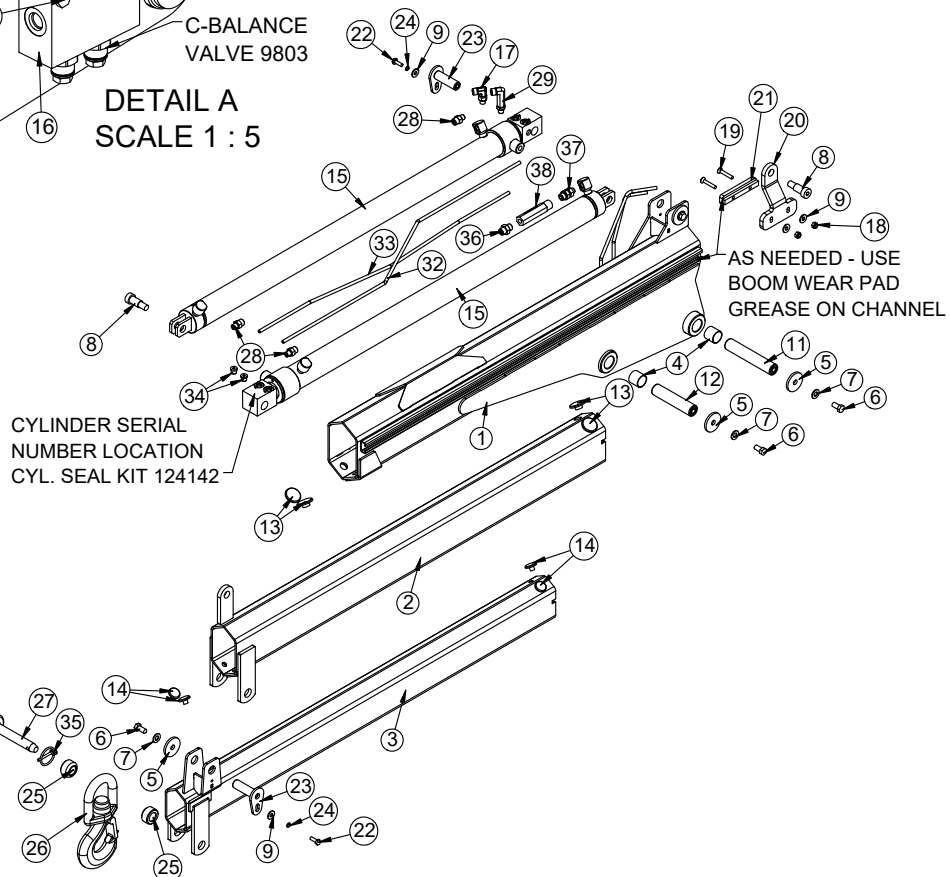


NOTE VALVE ORIENTATION



C-BALANCE VALVE 9803

DETAIL A
SCALE 1 : 5



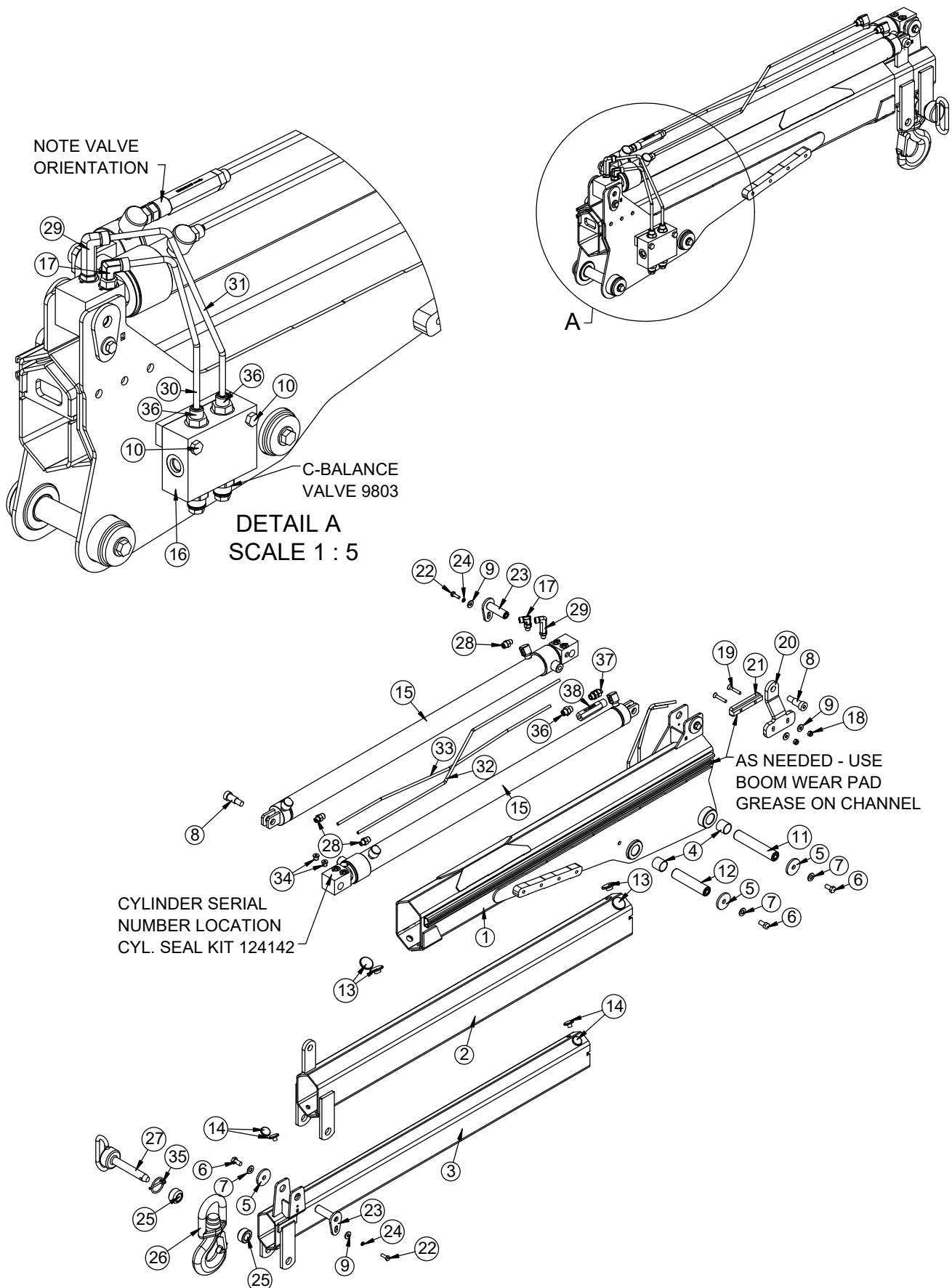
AS NEEDED - USE BOOM WEAR PAD GREASE ON CHANNEL

CYLINDER SERIAL NUMBER LOCATION
CYL. SEAL KIT 124142

Boom Assembly (No Winch) - PN 88944 Parts List

PN 88944			
ITEM	PART	DESCRIPTION	QTY
1	88943	INNER BOOM TC13	1
2	88989	BOOM WLDMT 1ST EXT TC13	1
3	88990	BOOM WLDMT 2ND EXT TC13	1
4	0069	BUSHING BPC16DXR16 1.00X1.00	4
5	9320	PIN CAP 0.44X1.75X0.19 YZ	6
6	9843	CAP SCR 0.38-16X0.75 HHGR8	6
7	C6353	WASHER 0.38 SAE FLAT YELLOW GR8	6
8	42155	BOLT SHOULDER 0.63X1.00 0.50-13X0.75	2
9	0340	WASHER 0.25 USS FLAT	4
10	0487	CAP SCR 0.31-18X1.75 HHGR5	2
11	88937CR	PIN 1.00X5.38 D&T ZC	1
12	89752CR	PIN 1.00X4.50 D&T ZC	1
13	19457	WEAR PAD 0.16X1.38 RND	4
14	25393	WEAR PAD 0.38X1.00 RND	4
15	88997	CYLINDER 1.75X33.50	2
16	89378	MANIFOLD ASM CBAL DOUBLE CBBDLJNZ4U	1
17	C1198	FTG 4-4 MFS-MAORB 90	1
18	0333	NUT 0.25-20 HHGR5 NYLOC	2
19	76182	CAP SCR 0.25-20X1.50 FSH	2
20	90004	PLATE CYLINDER GUIDE TC13	1
21	90120	WEAR PAD GUIDE CYL TC13	1
22	0479	CAP SCR 0.25-20X0.75 HHGR5	2
23	89702CR	PIN TEAR DROP .75X2.44 ZC	2
24	0521	WASHER 0.25 LOCK	2
25	89903	COLLAR 0.78X1.38X0.81	2
26	25842	HOOK 3 TON SWIVEL CROSBY 1028618	1
27	17007	PIN HITCH 0.75X4.00	1
28	D1291	FTG 4-4 MFS-MORB STRAIGHT	3
29	73948	FTG 4-4 MFS-MAORB 90	1
30	90211	TUBE ASM 0.25 TC13 BOOM VALVE RETRACT ZC	1
31	90212	TUBE ASM 0.25 TC13 BOOM VALVE EXTEND ZC	1
32	90213	TUBE ASM 0.25 TC13 BOOM CYL EXTEND ZC	1
33	90214	TUBE ASM 0.25 TC13 BOOM CYL RETRACT ZC	1
34	D0511	FTG 4 MORB PLUG HOLLOW HEX	2
35	5753	PIN 0.19X1.56 LYNCH	1
36	C4922	FTG 4-6 MFS-MORB STRAIGHT	3
37	92067	FTG 6-4 MAORB-MORB STRAIGHT	1
38	92949	VALVE SEQUENCE 5 GPM	1
REV. B			

Boom Assembly w/Winch - PN 92671

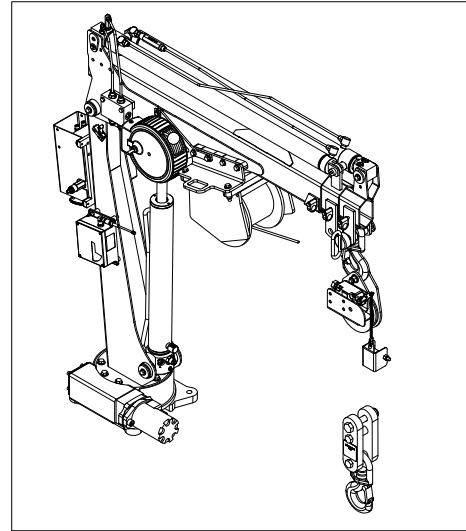


Boom Assembly w/Winch - PN 92671 Parts List

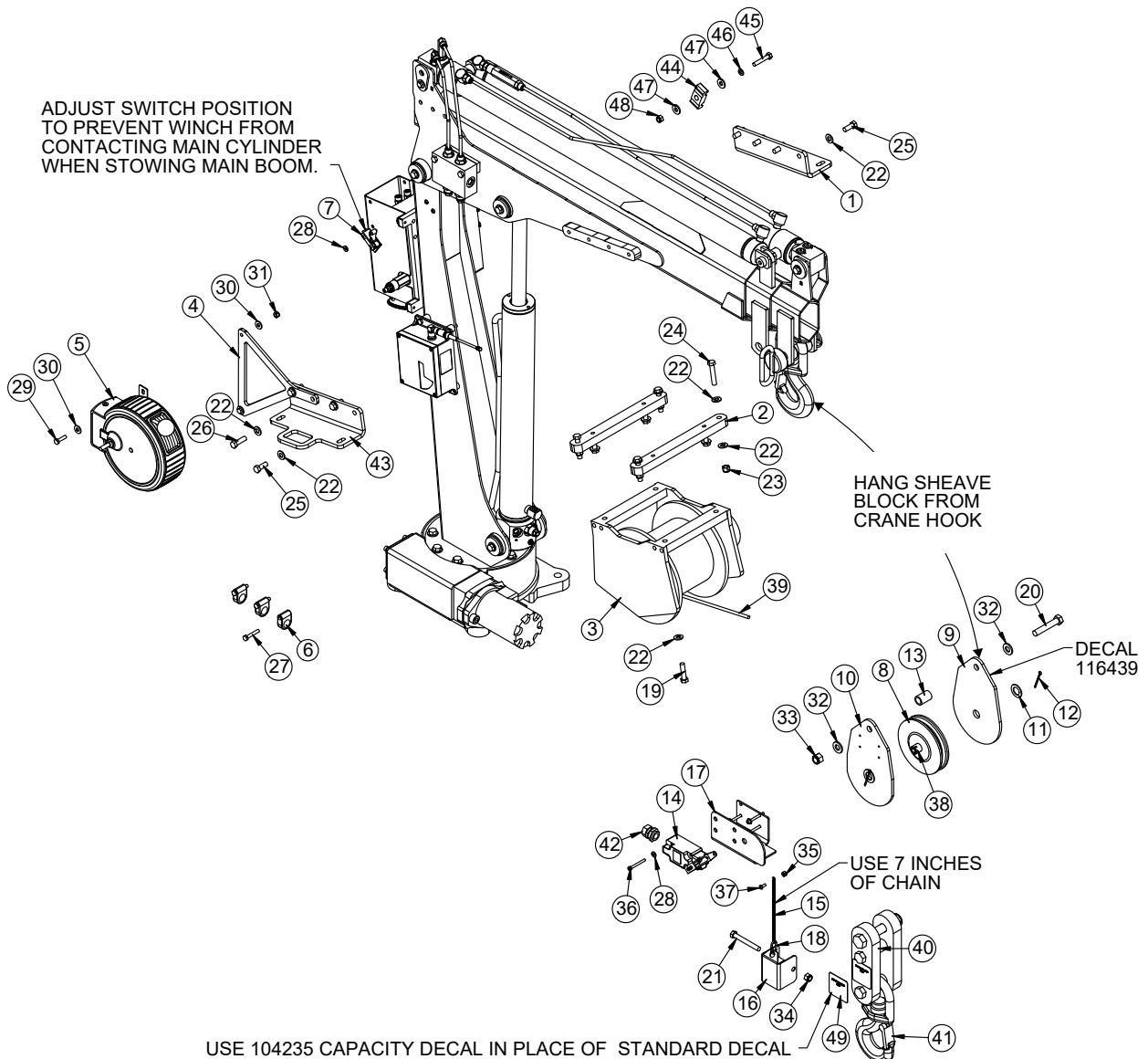
PN 92671			
ITEM	PART	DESCRIPTION	QTY
1	92672	INNER BOOM TC13 W/WINCH	1
2	88989	BOOM WLDMT 1ST EXT TC13	1
3	88990	BOOM WLDMT 2ND EXT TC13	1
4	0069	BUSHING BPC16DXR16 1.00X1.00	4
5	9320	PIN CAP 0.44X1.75X0.19 YZ	6
6	9843	CAP SCR 0.38-16X0.75 HHGR8	6
7	C6353	WASHER 0.38 SAE FLAT YELLOW GR8	6
8	42155	BOLT SHOULDER 0.63X1.00 0.50-13X0.75	2
9	040	WASHER 0.25 USS FLAT	4
10	0487	CAP SCR 0.31-18X1.75 HHGR5	2
11	88937CR	PIN 1.00X5.38 D&T ZC	1
12	89752CR	PIN 1.00X4.50 D&T ZC	1
13	19457	WEAR PAD 0.16X1.38 RND	4
14	25393	WEAR PAD 0.38X1.00 RND	4
15	88997	CYLINDER 1.75X33.50	2
16	89378	MANIFOLD ASM CBAL DOUBLE CBBDLJNZ4U	1
17	C1198	FTG 4-4 MFS-MAORB 90	1
18	0333	NUT 0.25-20 HHGR5 NYLOC	2
19	76182	CAP SCR 0.25-20X1.50 FSH	2
20	90004	PLATE CYLINDER GUIDE TC13	1
21	90120	WEAR PAD GUIDE CYL TC13	1
22	0479	CAP SCR 0.25-20X0.75 HHGR5	2
23	89702CR	PIN TEAR DROP .75X2.44 ZC	2
24	0521	WASHER 0.25 LOCK	2
25	89903	COLLAR 0.78X1.38X0.81	2
26	25842	HOOK 3 TON SWIVEL CROSBY 1028618	1
27	17007	PIN HITCH 0.75X4.00	1
28	D1291	FTG 4-4 MFS-MORB STRAIGHT	3
29	73948	FTG 4-4 MFS-MAORB 90	1
30	90211	TUBE ASM 0.25 TC13 BOOM VALVE RETRACT ZC	1
31	90212	TUBE ASM 0.25 TC13 BOOM VALVE EXTEND ZC	1
32	90213	TUBE ASM 0.25 TC13 BOOM CYL EXTEND ZC	1
33	90214	TUBE ASM 0.25 TC13 BOOM CYL RETRACT ZC	1
34	D0511	FTG 4 MORB PLUG HOLLOW HEX	2
35	5753	PIN 0.19X1.56 LYNCH	1
36	C4922	FTG 4-6 MFS-MORB STRAIGHT	3
37	92067	FTG 6-4 MAORB-MORB STRAIGHT	1
38	92949	VALVE SEQUENCE 5 GPM	1
REV. A			

Winch Kit Assembly - PN 75172

NOTES:
CRANE SHOWN FOR REFERENCE



ADJUST SWITCH POSITION
 TO PREVENT WINCH FROM
 CONTACTING MAIN CYLINDER
 WHEN STOWING MAIN BOOM.



Winch Kit Assembly - PN 75172 Parts List

PN 75172			
ITEM	PART	DESCRIPTION	QTY
1	85514	ANGLE FORMED WINCH MOUNT TC23	1
2	85784	PLATE WINCH MOUNT TC CRANE	2
3	19511	WINCH 1600 3315 CRANE	1
4	92669	PLATE CORD REEL MOUNTING TC13	1
5	72602	CORD REEL ASM 15/21 FT CRANE	1
6	0337	HOSE CLAMP LN 3160 PP	3
7	25440	SWITCH LIMIT XLIFT E1117-B9112-6C	1
8	16494	SHEAVE 3515 5.25 DIA .25R/1.12 THK	1
9	85786	PLATE SHEAVE ASM TC CRANE PC RED ET-5391	1
10	85787	PLATE SHEAVE ASM TC CRANE	1
11	0375	MACHY WASHER 0.75ID 14GA	2
12	37824	COTTER PIN .125X1.00	2
13	16607	SPACER 3315 SNATCH BLOCK BLACK	1
14	11938	SWITCH LIMIT A2B FURNAS 3SE3170	1
15	10972	CHAIN 0.105 (RM) 2607-21201	1
16	35264	WEIGHT ANTI 2 BLOCK PC RED ET-5391	1
17	33081	COVER ANTI 2 BLOCK RH PC WHITE	1
18	37850	CONNECTOR QUICK LINK 0.13	1
19	16962	CAP SCR 0.38-16X1.50 HHGR8	4
20	47868	CAP SCR 0.50-13X2.75 HHGR8	1
21	C0949	CAP SCR 0.38-16X3.00 HHGR5	1
22	C6353	WASHER 0.38 SAE FLAT YELLOW GR8	20
23	56673	NUT 0.38-16 HHGR8 NYLOC	4
24	C1006	CAP SCR 0.38-16X2.00 HHGR8	4
25	13573	CAP SCR 0.38-16X1.00 HHGR8	6
26	13576	CAP SCR 0.38-16X1.25 HHGR8	2
27	0220	CAP SCR 0.25-20X1.50 HHGR5	3
28	D0178	WASHER #10 SAE FLAT	6
29	0480	CAP SCR 0.25-20X1.00 HHGR5	2
30	0340	WASHER 0.25 USS FLAT	4
31	0333	NUT 0.25-20 HHGR5 NYLOC	2
32	D0790	WASHER 0.50 SAE FLAT YELLOW GR8	2
33	5468	NUT 0.50-13 HHGR8 NYLOC	1
34	0347	NUT 0.38-16 HHGR5 NYLOC	1
35	C4956	NUT #10-24 HH NYLOC SS	1
36	33749	CAP SCR #10-24X1.75 SH	4
37	D1711	CAP SCR #10-24X0.50 BTNHD SS	1
38	42524CR	PIN 0.75X2.50 COTTER ZC	1
39	17006	WIRE ROPE 1/4 7X19 GAC 65FT	1
40	39027	DOWN HAUL WEIGHT ASSEMBLY	1
41	25842	HOOK 3 TON SWIVEL CROSBY 1028618	1
42	10965	STRAIN RELIEF .50 NPT .20-.35 CABLE	1
43	85933	ANGLE FORMED WINCH MOUNT TC23 HOOK STOW	1

Winch Kit Assembly - PN 75172 Parts List - cont.

PN 75172

ITEM	PART	DESCRIPTION	QTY
44	8622	CLAMP HOSE/TUBE AG-2	1
45	0487	CAP SCR 0.31-18X1.75 HHGR5	1
46	0522	WASHER 0.31 LOCK	1
47	0343	WASHER 0.31 USS FLAT	2
48	0342	NUT 0.31-18 HHGR5 NYLOC	1
49	104235	DECAL SNATCH BLOCK CAP 3 TON 18 LB	1
REV. C			

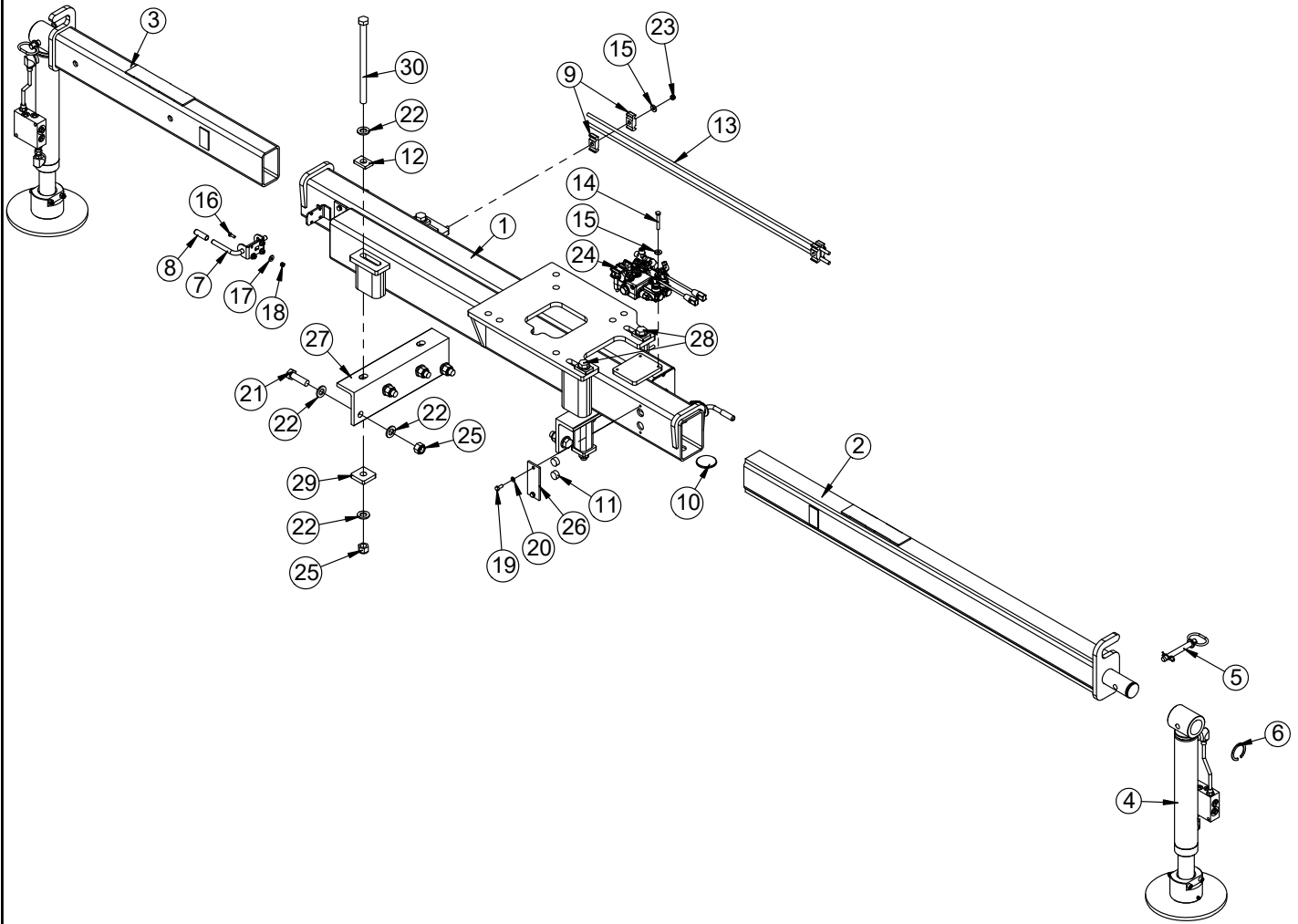
ITEMS NOT SHOWN

PART	DESCRIPTION	QTY
41068	DECAL VB CONTROL	1
116439	DECAL LOAD BLOCK	1

NOTES:
CRANE SHOWN FOR REFERENCE.

This page left intentionally blank.

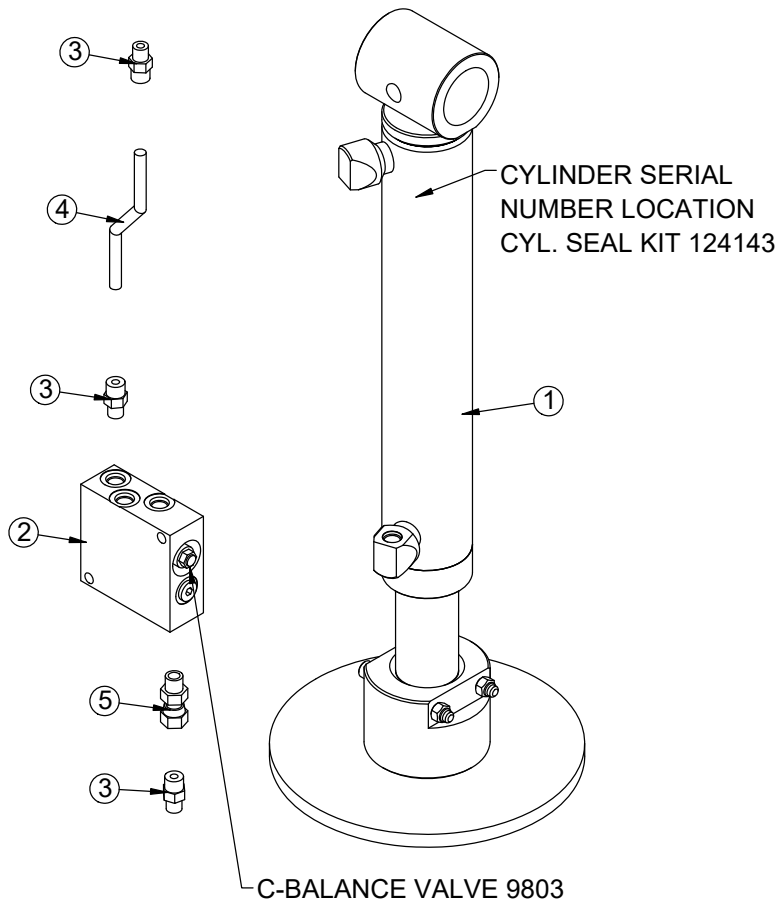
Stabilizer Base Assembly - PN 78440



Stabilizer Base Assembly - PN 78440 Parts List

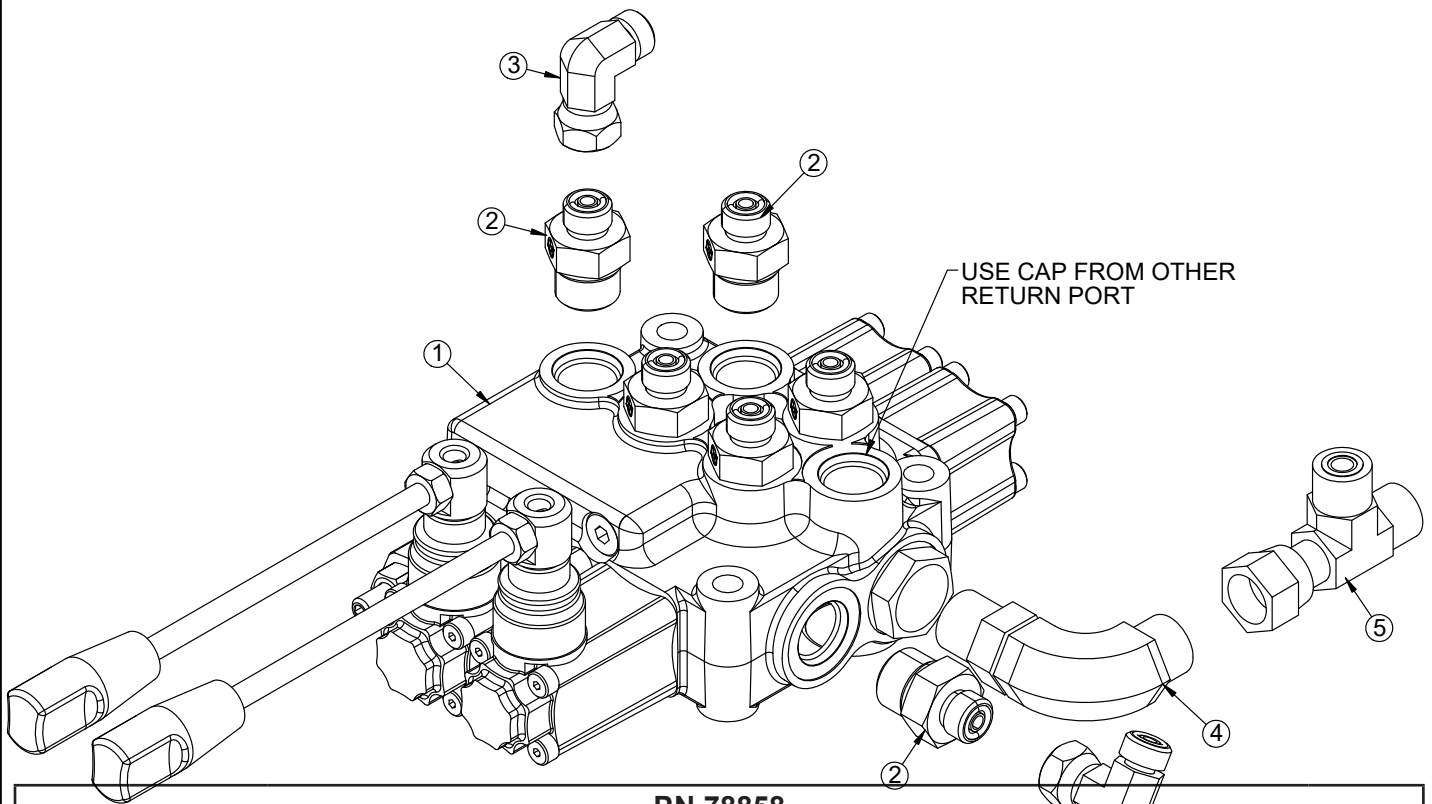
PN 78440			
ITEM	PART	DESCRIPTION	QTY
1	78441	BASE TC13/23/33/38	1
2	78620	STABILIZER TC BASE LONG	1
3	78624	STABILIZER TC BASE SHORT	1
4	78850	CYLINDER ASM TC STABILIZER	2
5	42977	PIN HITCH 0.63X4.00	2
6	0108	SNAP RING 2.00 7200-200	2
7	11154	LATCH SPRING 0.50 PIN 1.13 TRAVEL	2
8	C5587	CAP PLASTIC 0.375IDX0.50ODX2.00LONG	2
9	8622	CLAMP HOSE/TUBE AG-2	4
10	9991	WEAR PAD 0.19X2.50 RND NYLATRON	2
11	51169	WEAR PAD 0.50X1.00 RND	8
12	78130	PLATE TIE DOWN TC BASE	4
13	78639	TUBE ASM 0.38X42.00 TC BASE ASM ZC	2
14	C0927	CAP SCR 0.31-18X2.25 HHGR5	3
15	0343	WASHER 0.31 USS FLAT	5
16	C6021	CAP SCR 0.25-20X0.75 BTNHD SS	8
17	0340	WASHER 0.25 USS FLAT	8
18	0333	NUT 0.25-20 HHGR5 NYLOC	8
19	0420	CAP SCR 0.31-18X0.75 HHGR5	8
20	0522	WASHER 0.31 LOCK	8
21	58681	CAP SCR 0.75-10X2.50 HHGR8	8
22	C6219	WASHER 0.75 SAE FLAT YELLOW GR8	24
23	0342	NUT 0.31-18 HHGR5 NYLOC	2
24	78858	HYD KIT TC BASE	1
25	C0538	NUT 0.75-10 HHGR8 NYLOC	12
26	24094	PLATE OUTRIGGER WEARPAD COVER PC WHITE	4
27	97656	TIE DOWN WLDMT TC BASE	2
28	97664	CAP SCR 0.75-10X14.00 HHGR8	2
29	97666	PLATE TIE DOWN TC BASE BOTTOM	4
30	C1032	CAP SCR 0.75-10X12.00 HHGR8	2
REV. D			

Stabilizer Cylinder Assembly - PN 78850



PN 78850			
ITEM	PART	DESCRIPTION	QTY
1	78619	CYLINDER 2.50X12.50 W/ STAB PAD	1
2	16154	MANIFOLD DOUBLE T11A 3500 PSI	1
3	0279	FTG 6-6 MFS-MORB STRAIGHT	3
4	78853	TUBE ASM 0.38X6.00 TC STABILIZER ZC	1
5	33743	FTG 6-6 FFSS-MORB STRAIGHT	1

Stabilizer Hydraulic Kit - PN 78858



PN 78858

ITEM	PART	DESCRIPTION	QTY
1	61040	VB 2 SECT W/PB HYDROCONTROL	1
2	12160	FTG 4-8 MFS-MORB STRAIGHT	6
3	D1314	FTG 4-4 MFS-FFSS 90	2
4	C5547	FTG 6-8 MFS-MAORB 90	1
5	C2554	FTG 6-6-6 MFS-FFSS-MFS TEE	1

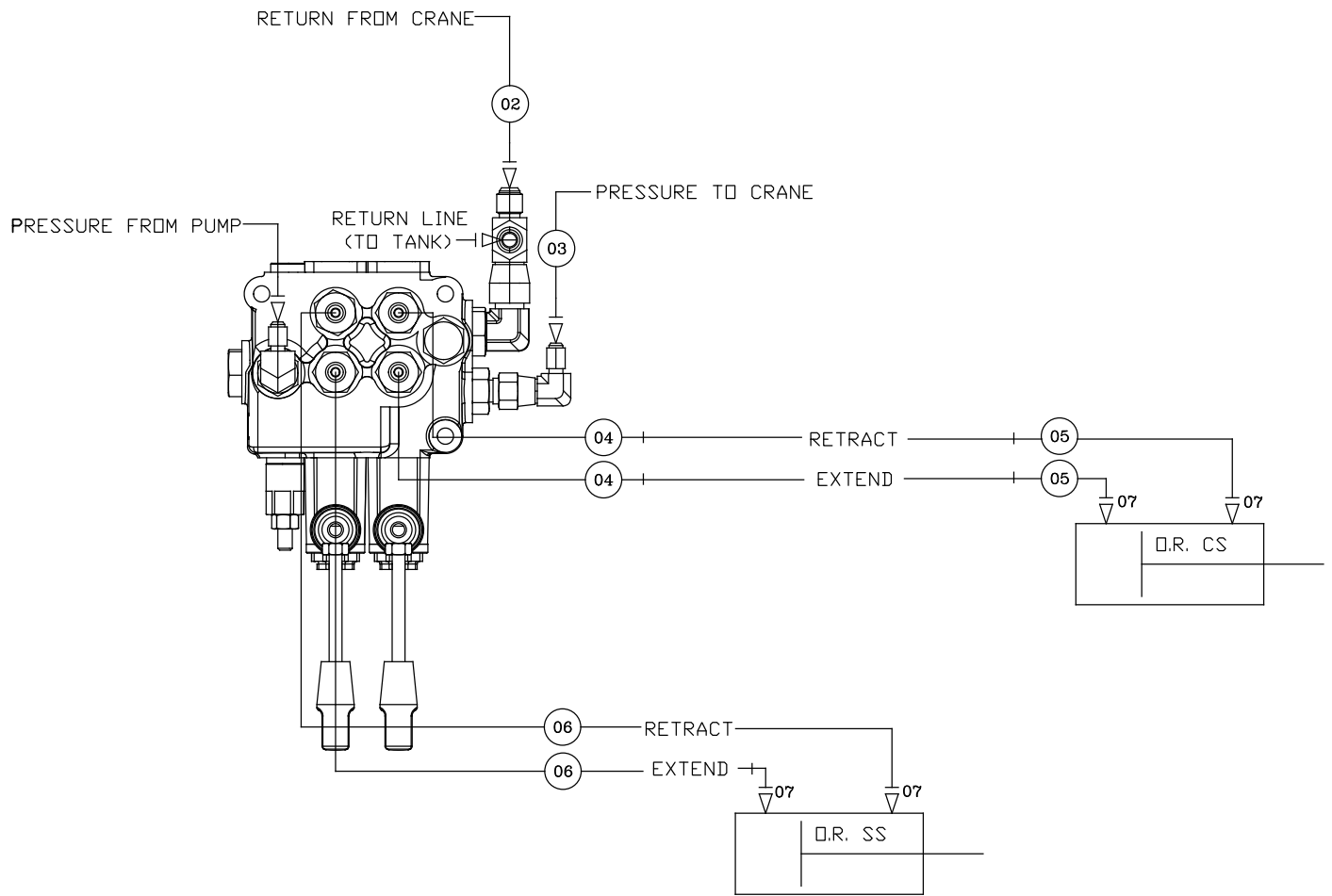
REV. B

ITEMS NOT SHOWN

PARTS	DESCRIPTION	QTY
78859	HOSE KIT	1
D1190	FTG 4-6 MFS-MAORB 45	1

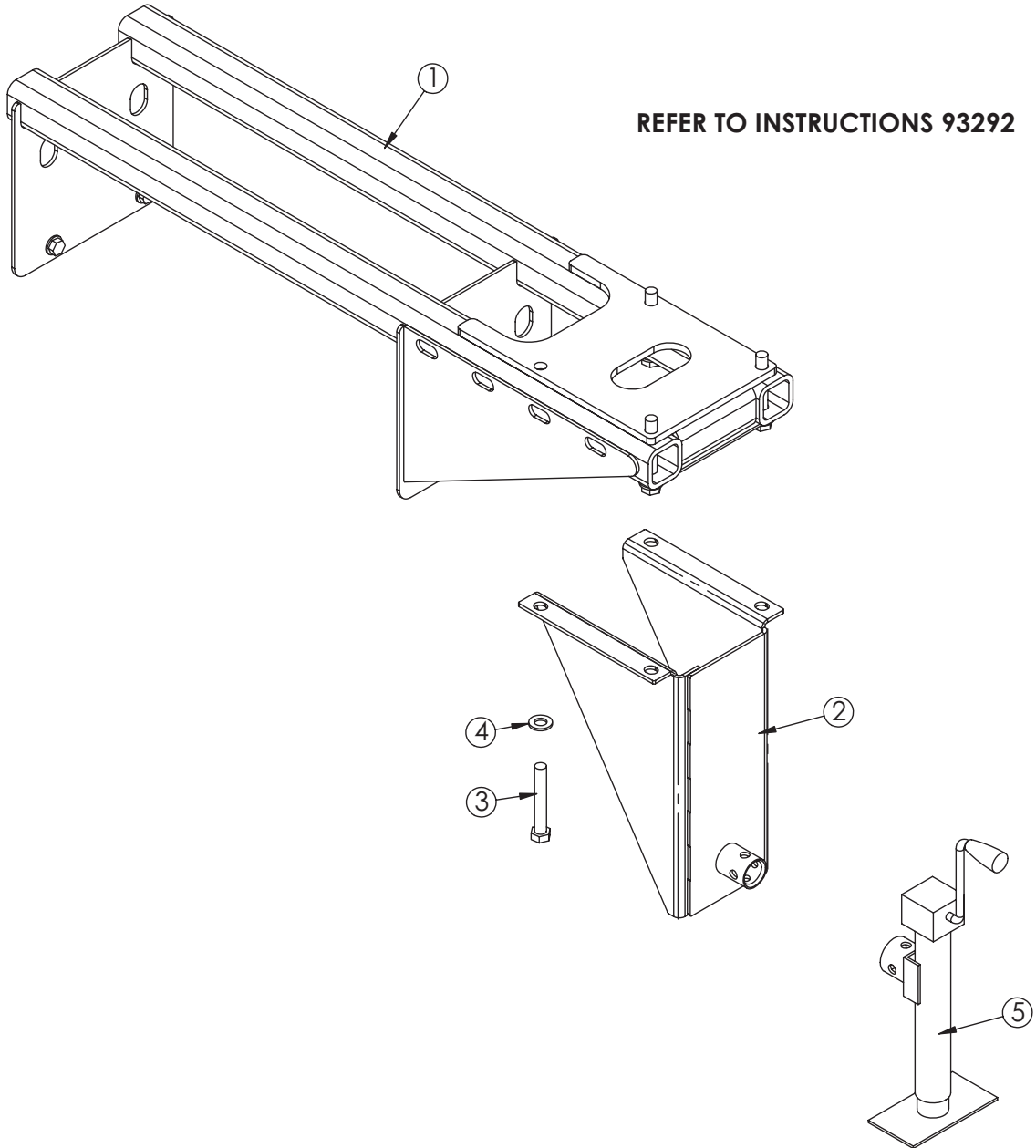
NOTES: SEE INSTRUCTION DRAWING 78854.

Stabilizer Hydraulic Installation - PN 78854



PN 78854		
PARTS	DESCRIPTION	QTY
78859	HOSE KIT TC BASE (INCL:2-6)	1
90034	HOSE-HYD .38 X 20	1REF
90033	HOSE-HYD .25 X 25	1REF
90031	HOSE-HYD .25 X 16	2REF
90032	HOSE-HYD .25 X 42	2REF
73098	HOSE-HYD .25 X 63	2REF
D1190	FTG 4-6 MFS-MAORB 45	4

Manual Crank Stabilizer Kit - PN 93291



PN 93291

ITEM	PART No.	DESCRIPTION	QTY.
1	76536	SUBFRAME KIT TC13/23	1
2	76954	STABILIZER MNT TC23	1
3	C1030	CAP SCR 0.75-10X5.00 HHGR8	4
4	C6219	WASHER 0.75 SAE FLAT YELLOW GR8	4
5	79936	JACK 20.63 SIDE CRANK	1



Subject to Change without Notification.
© 2022 Stellar Industries, Inc.