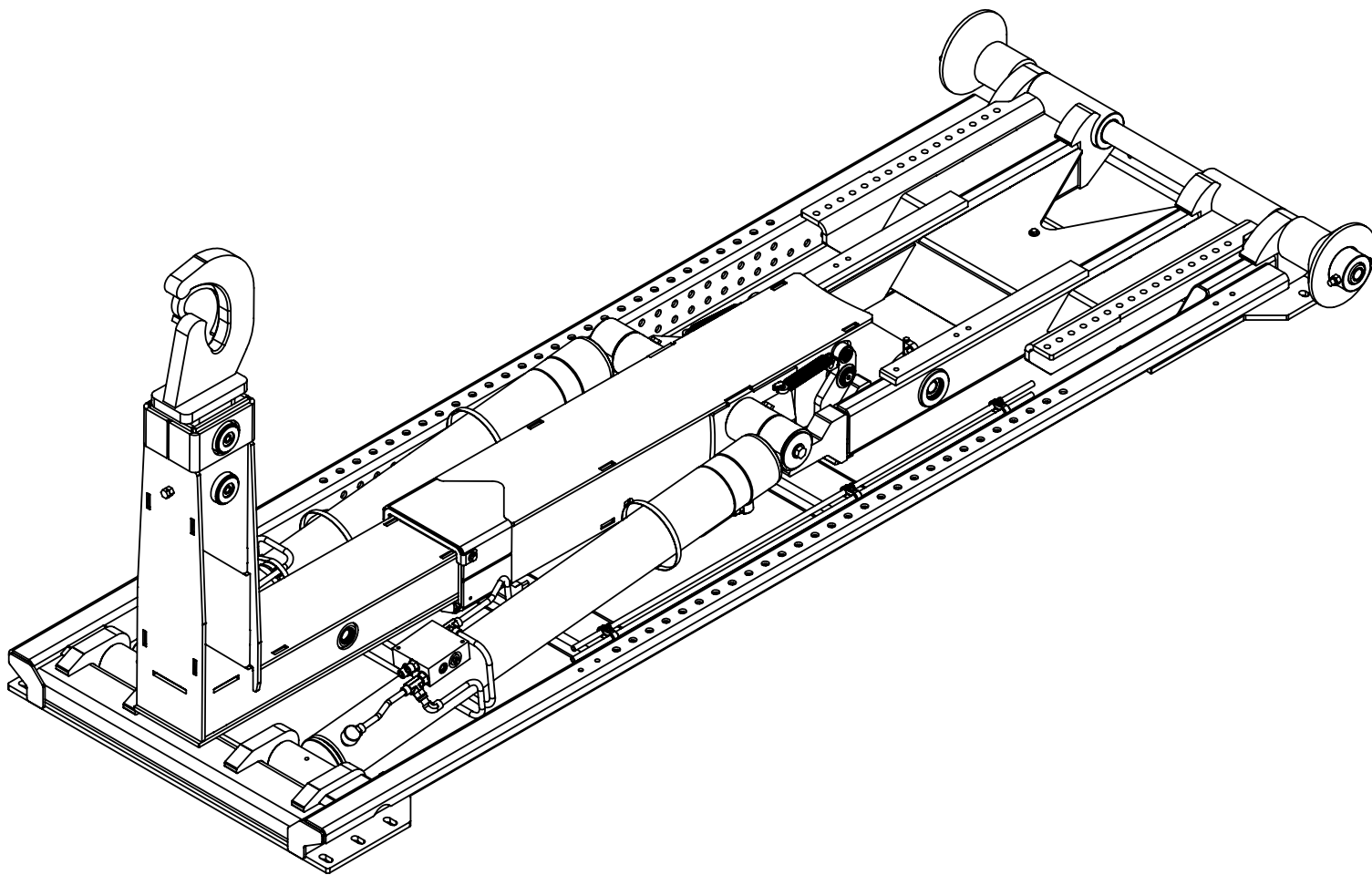




NXT Hooklift Options Manual

Options



Stellar Industries, Inc.

190 State Street

PO Box 169

Garner, IA 50438

800-321-3741

Fax: 641-923-2811

www.stellarindustries.com

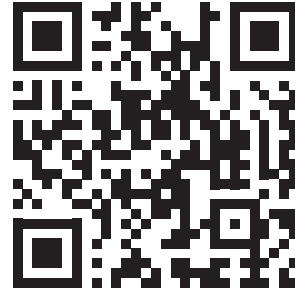
Subject to Change without Notification.
© 2023 Stellar Industries, Inc.

REV1
PN: 127721

P65 Warning & Cold Weather Notice

WARNING

Operating, maintaining, and servicing a Stellar product may expose you to chemicals including, but not limited to, engine exhaust, carbon monoxide, phthalates, and lead. These chemicals are known to the State of California to cause cancer and birth defects (or other reproductive harm). To keep your exposure to a minimum, be sure to avoid breathing exhaust and service your Stellar product in a well-ventilated area while wearing gloves or washing your hands frequently. For more information, go to www.P65Warnings.ca.gov/passenger-vehicle.



www.p65/warning.ca.gov

NOTICE

Although clear data on cold weather performance from every steel manufacturer is not available for all types and thicknesses of steel, Stellar Industries is confident that the weldments on our products will operate to 100% of their intended purpose to temperatures down to -40° F / C.

It is recommended if Stellar manufactured equipment needs to be used in temperatures below -40° F / C, the operator should pull the unit into a climate-controlled area and allow the weldments to warm up to and then maintain a temperature above this level.

Table of Contents

Introduction	iv
Serial Tag Location	v
Chapter 1 - Options	1
Toolbox Assembly - PN 10401	2
Toolbox Assembly - PN 10401 Parts List.....	3
Toolbox Assembly - PN 8480.....	4
Toolbox Assembly - PN 8480 Parts List.....	5
Toolbox Assembly - PN 10402.....	6
Toolbox Assembly - PN 10402.....	7
Fender Kit Low Pro Plastic - PN 127888	8
Fender Kit Low Pro Plastic - PN 127888 Parts List	9
Fender Asm Single Steel - PN 127890.....	10
Fender Asm Single Steel - PN 127890 Parts List.....	11
Fender Asm 2-Ton Plastic - PN 107101	12
Fender Asm 2-Ton Plastic - PN 107101 Parts List	13
Fender Kit Tandem Poly - PN 58217	14
Fender Kit Tandem Poly - PN 58217 Parts List	15
Fender Asm Single Steel 22.5 - PN 128015.....	16
Fender Asm Single Steel 22.5 - PN 128015 Parts List.....	17
Fender Asm AL Smooth Low-Pro - PN 66325	18
Fender Asm AL Smooth Low-Pro - PN 66325 Parts List	19
Fender Asm Single AL DPS - PN 127889.....	20
Fender Asm Single AL DPS - PN 127889 Parts List.....	21
Kit Bumper Threshold Single Fender 30" - PN 119066	22
Kit Bumper Threshold Single Fender 30" - PN 119066	23
Mtg Kit Pioneer Tarper - PN 128210.....	24
Mtg Kit Pioneer Tarper - PN 128210 Parts List.....	25
Mtg Kit Donovan Tarper - PN 128211	26
Mtg Kit Donovan Tarper - PN 128211 Parts List.....	27
Mud Flap MNT Kit - PN 96895.....	28
Mud Flap MNT Kit - PN 96895 Parts List	29
Bumper Asm - 16K Pintle Flex - PN 81300	30
Bumper Asm - 16K Pintle Flex - PN 81300	31
Bumper - Manual Fold Out w/Lights - PN 5348.....	32
Bumper - Manual Fold Out w/Lights PN 5348 Parts List.....	33
Bumper Asm HD 94.00 - PN 5407.....	34
Bumper Asm HD 94.00 - PN 5407 Parts List.....	35
Bumper Asm HD 94.00 - PN 5407 (continued).....	36
Bumper Asm HD 94.00 - PN 5407 Parts List (2)	37
Bumper Asm Bolt On 30K Pintle - PN 17441	38
Bumper Asm Bolt On 30K Pintle - PN 17441 Parts List	39
Bumper Asm Bolt On 30K Pintle - PN 17441 (continued)	40
Bumper Asm Bolt On 30K Pintle - PN 17441 Parts List (2).....	41
Bumper Asm Pintle w/Folding Bumper - PN 31920.....	42
Bumper Asm Pintle w/Folding Bumper - PN 31920 Parts	43
Bumper Asm Pintle w/Folding Bumper - PN 31920 (Cont.).....	44
Bumper Asm Pintle w/Folding Bumper - PN 31920 Parts	45

Introduction

A copy of this manual is provided with every hooklift and can be found in the hard plastic manual case that is installed on the chassis. A copy of this manual shall remain with the hooklift at all times.

Throughout the manual, three signal words will be used to bring attention to important items:

NOTICE

NOTICE indicates a practice not related to physical injury.

WARNING

WARNING indicates a hazardous situation which, if not avoided, could result in death or serious injury.

DANGER

DANGER indicates a hazardous situation which, if not avoided, will result in death or serious injury.

Information contained within this manual does not cover operation, maintenance, or troubleshooting. Please refer to the General Hooklift Manual for details on these items.

This manual is not binding. Stellar Industries, Inc. reserves the right to change, at any time, any or all of the items, components, and parts deemed necessary for product improvement or commercial/production purposes. This right is kept with no requirement or obligation for immediate mandatory updating of this manual.

If more information is required or technical assistance is needed, or if you feel that any part of this manual is unclear or incorrect, please contact the Stellar Customer Service Department by phone at 800-321-3741 or email at service@stellarindustries.com.



www.stellarindustries.com

**For Technical Questions, Information, Parts, or Warranty, Call Toll-Free at
800-321-3741**

Hours: Monday - Friday, 8:00 a.m. - 5:00 p.m. CST

Or email at the following addresses:

Technical Questions, and Information

service@stellarindustries.com

Order Parts

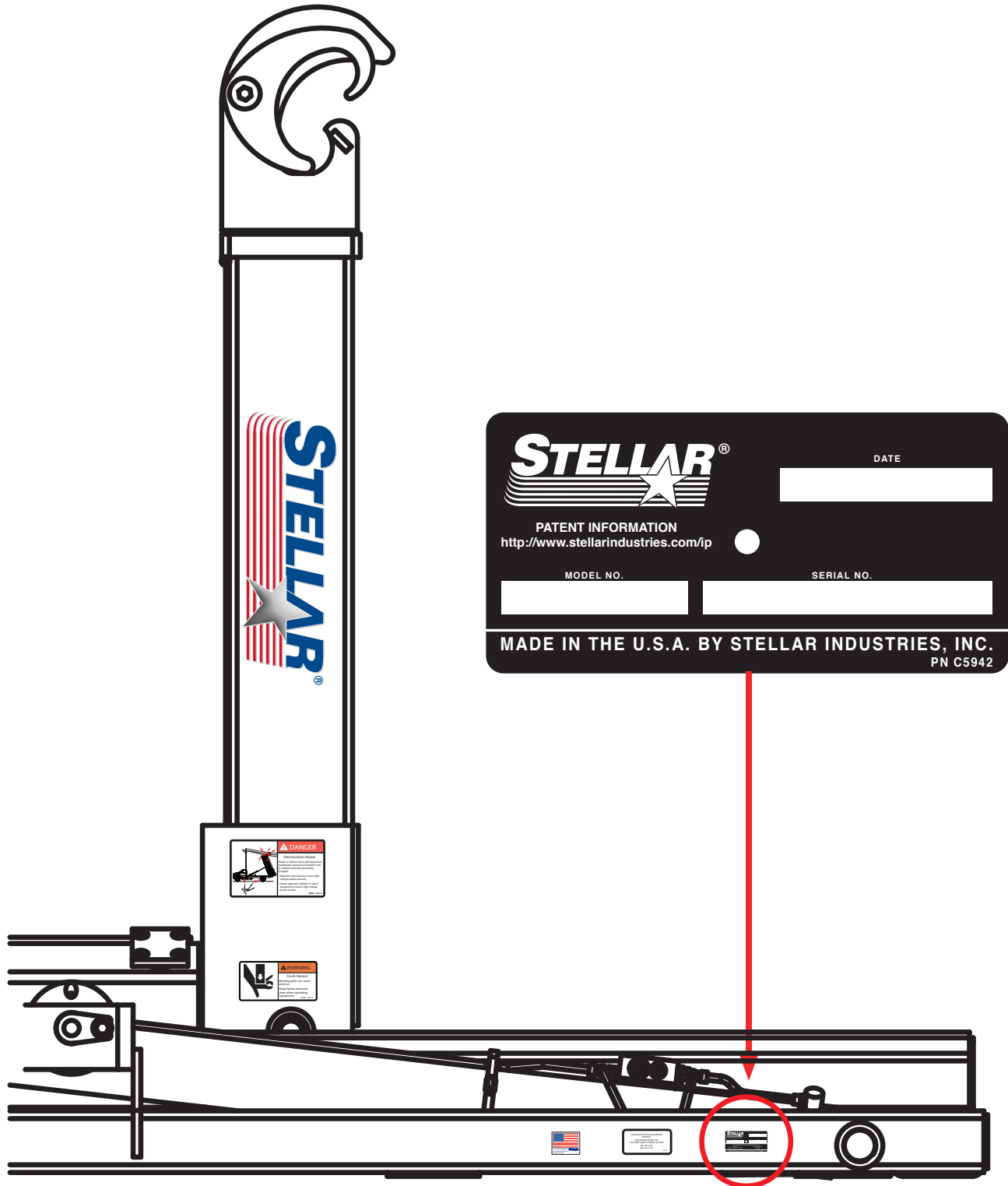
parts@stellarindustries.com

Warranty Information

warranty@stellarindustries.com

Serial Tag Location

The serial tag should be located on the right side (passenger side) of the base assembly:



This Page Intentionally Left Blank.

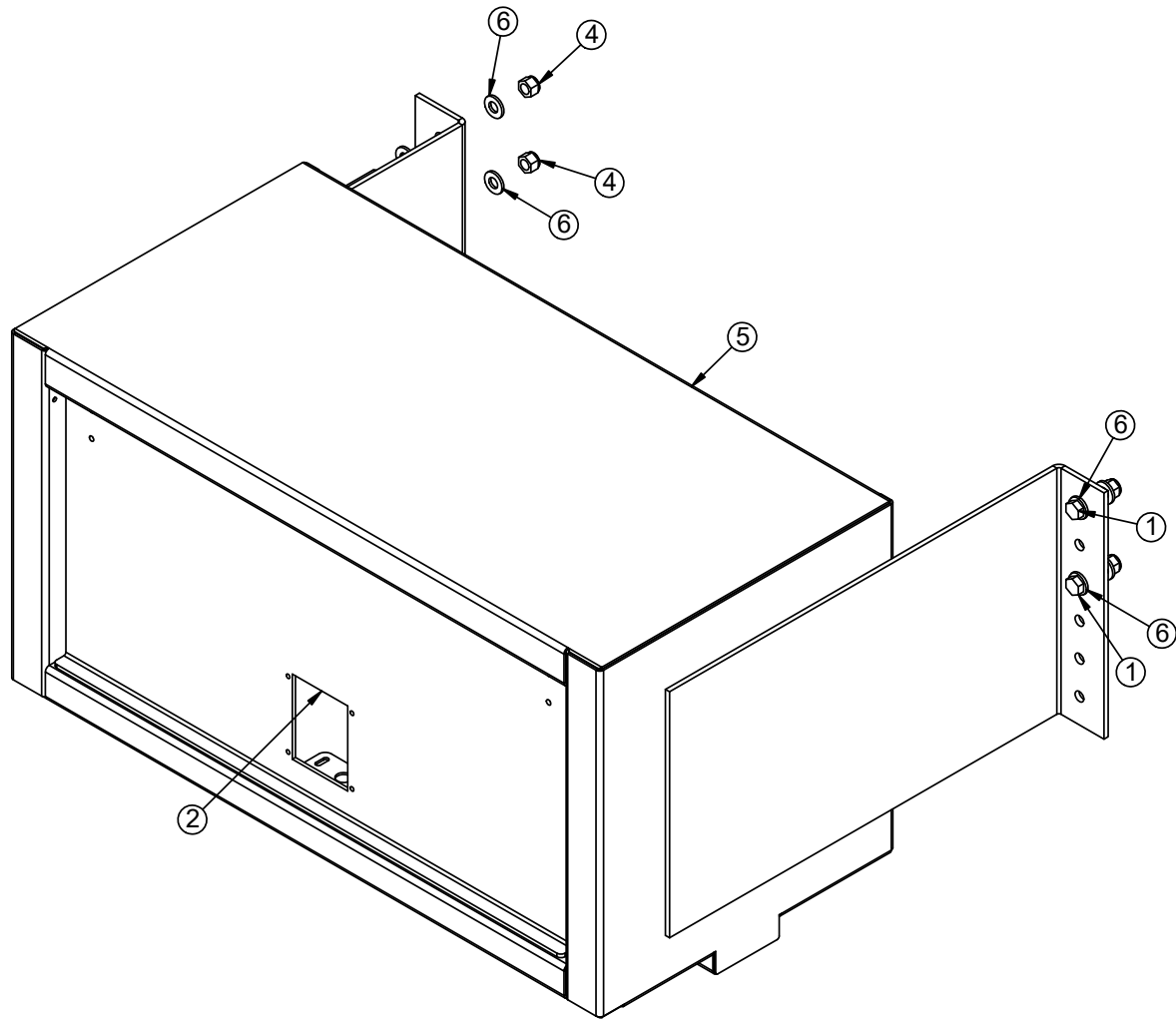
Chapter 1 - Options

CHAPTER CONTENTS

TOOLBOX ASSEMBLY (10401)	2
TOOLBOX ASSEMBLY (8480).....	4
TOOLBOX ASSEMBLY (10402)	6
FENDER KIT LOW-PRO PLASTIC (127888)	8
FENDER ASSEMBLY SINGLE STEEL (127890)	10
FENDER ASSEMBLY 2-TON PLASTIC (107101)	12
FENDER KIT, TANDEM POLY (58217)	14
FENDER ASSEMBLY, SIGNLE STEEL 22.5 (128015).	16
FENDER ASSEMBLY, AL SMOOTH LOW-PRO (66325)	18
FENDER ASSEMBL SINGLE AL DPS (127889)	20
KIT, BUMPER THRESHOLD SINGLE FENDER 30" (119066).....	22
MTG KIT, PIONEER TARPEN (128210)	24
MTG KIT, DONOVAN TARPEN (128211)	26
MUD FLAP MTG KIT (96895)	28
BUMPER ASSEMBLY, 16K PINTLE FLEX (81300)	30
BUMPER, MANUAL FOLD OUT W/LIGHTS (5348)	32
BUMPER ASSEMBLY HD 94.00 (5407)	34
BUMPER ASSEMBLY, BOLT ON 30K PINTLE (17441)	38
BUMPER ASSEMBLY PINGTLE W/FOLDING BUMPER (31920)	44

Toolbox Assembly - PN 10401

UTB ASM OH 18X36X18 W / MOUNTS



Toolbox Assembly - PN 10401 Parts List

PN 10401

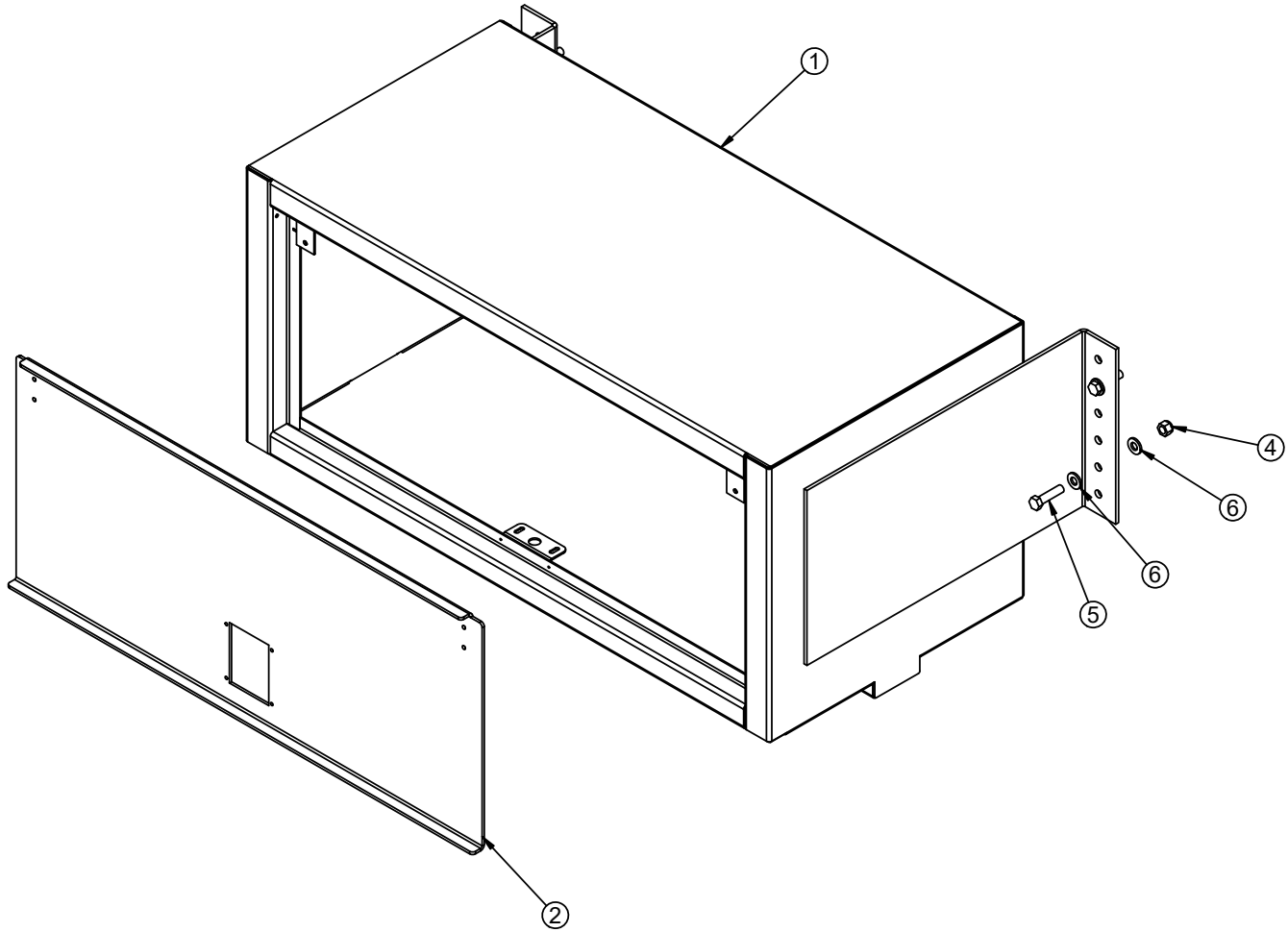
ITEM	PART	DESCRIPTION	QTY
1	68604	UBTB WLDMT OH 20X58X22 TAB W/MOUNTS	1
2	10427	DOOR AL OH 17.19X53.00	1
3	10638	HARDWARE ASM OH DOOR NOT SHOWN (NOT SHOWN)	1
4	0479	CAP SCR 0.25-20X0.75 HHGR5	2
5	0333	NUT 0.25-20 HHGR5 NYLOC	2
6	5468	NUT 0.50-13 HHGR8 NYLOC	4
7	8833	CAP SCR 0.50-13X2.00 HHGR8	4
8	D0790	WASHER 0.50 SAE FLAT YELLOW GR8	8

ITEMS NOT SHOWN

PART	DESCRIPTION	QTY
C5976	WEATHERSTRIP	5 FT
70174	OH DOOR STOP KIT	1

Toolbox Assembly - PN 8480

UBTB OH 20X45X22 W / MOUNTS

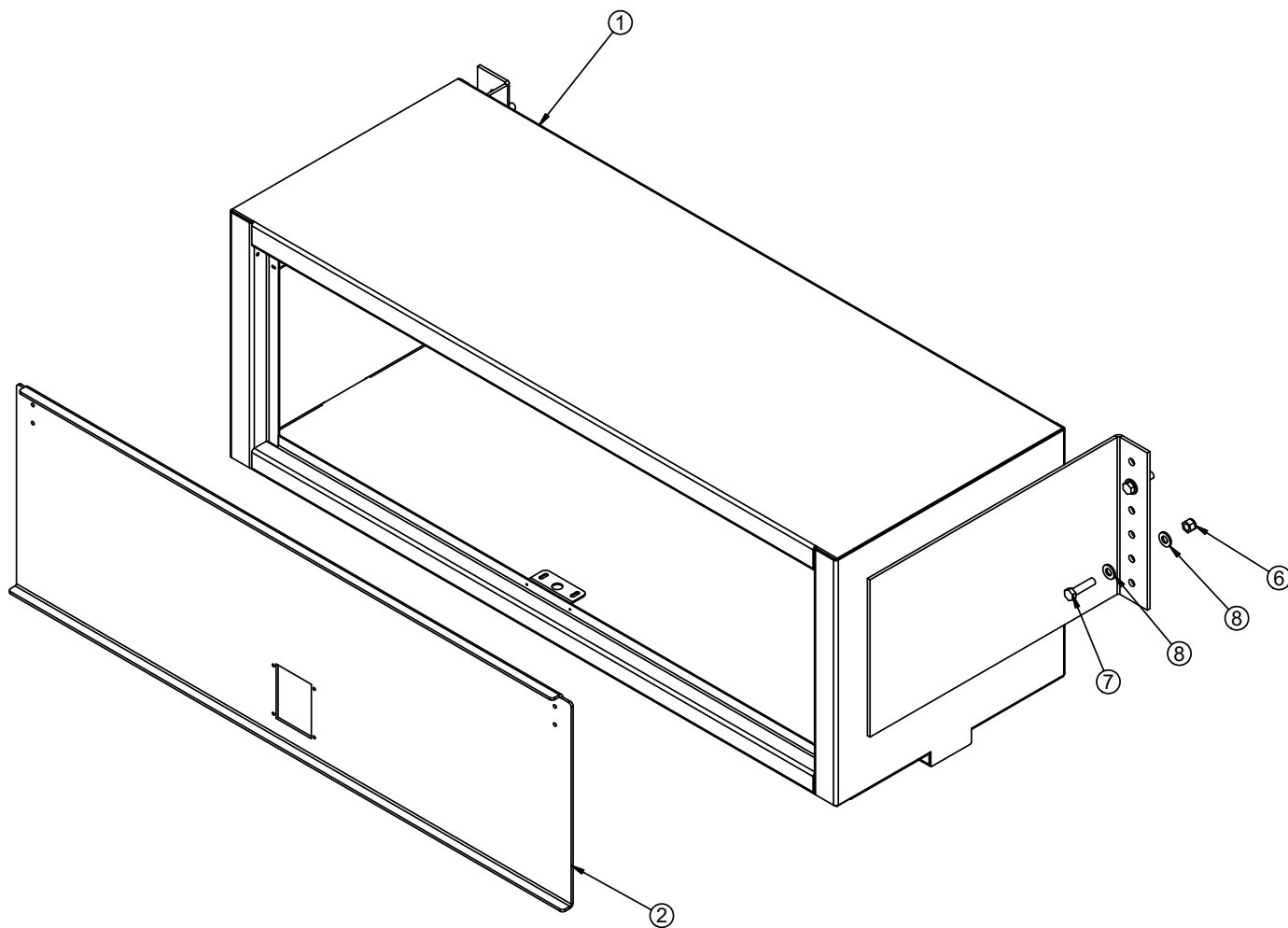


Toolbox Assembly - PN 8480 Parts List

PN 8480			
ITEM	PART	DESCRIPTION	QTY
1	66791	UBTB WLDMT OH 20X45X22 TAB W/MOUNTS	1
2	7193	DOOR AL OH 17.13X40.00	1
3	10638	HARDWARE ASM OH DOOR NOT SHOWN (NOT SHOWN)	1
4	5468	NUT 0.50-13 HHGR8 NYLOC	4
5	8833	CAP SCR 0.50-13X2.00 HHGR8	4
6	D0790	WASHER 0.50 SAE FLAT YELLOW GR8	8

Toolbox Assembly - PN 10402

UBTB ASM OH 20X58X22 W / MOUNTS



Toolbox Assembly - PN 10402

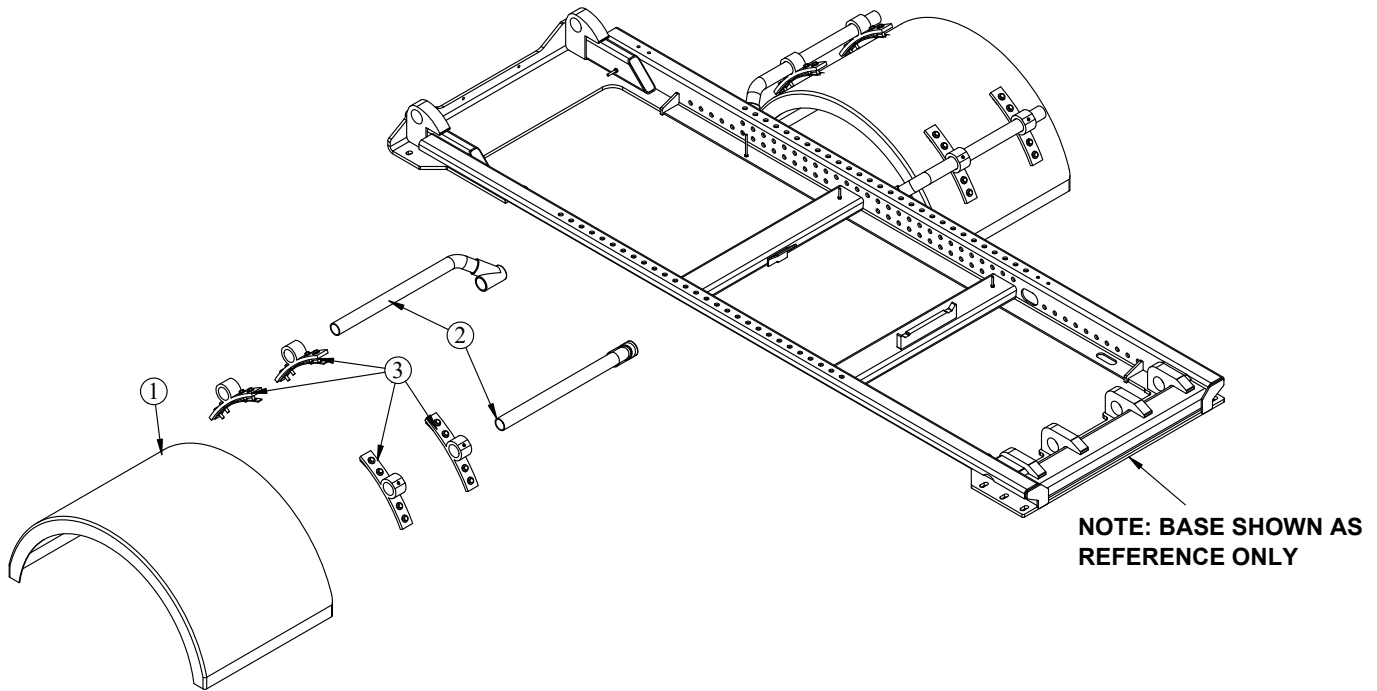
PN 10402

ITEM	PART	DESCRIPTION	QTY
1	68604	UBTB WLDMT OH 20X58X22 TAB W/MOUNTS	1
2	10427	DOOR AL OH 17.19X53.00	1
3	10638	HARDWARE ASM OH DOOR NOT SHOWN (NOT SHOWN)	1
4	0479	CAP SCR 0.25-20X0.75 HHGR5	2
5	0333	NUT 0.25-20 HHGR5 NYLOC	2
6	5468	NUT 0.50-13 HHGR8 NYLOC	4
7	8833	CAP SCR 0.50-13X2.00 HHGR8	4
8	D0790	WASHER 0.50 SAE FLAT YELLOW GR8	8

ITEMS NOT SHOWN

PART	DESCRIPTION	QTY
C5976	WEATHERSTRIP	8 FT
70174	OH DOOR STOP KIT	1

Fender Kit Low Pro Plastic - PN 127888

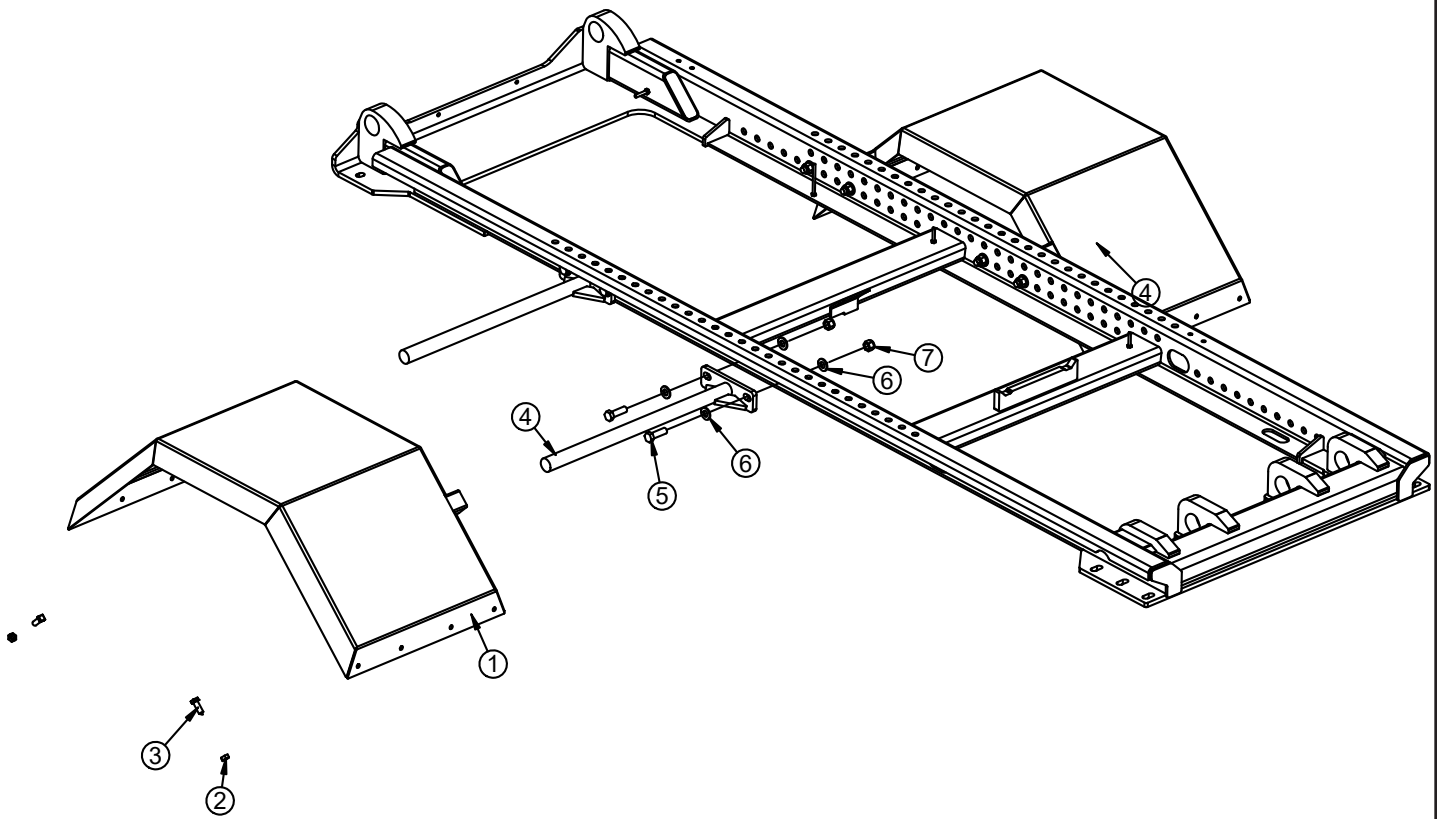


Fender Kit Low Pro Plastic - PN 127888 Parts List

PN 127888

ITEM	PART	DESCRIPTION	QTY
1	96896	FENDER SINGLE LOW PRO PLASTIC BLACK - MIN1900	2
2	5733	MTG KIT OFFSET POLY FENDER (FLEET)	2
3	7633	FENDER MOUNT ASM KIT	2

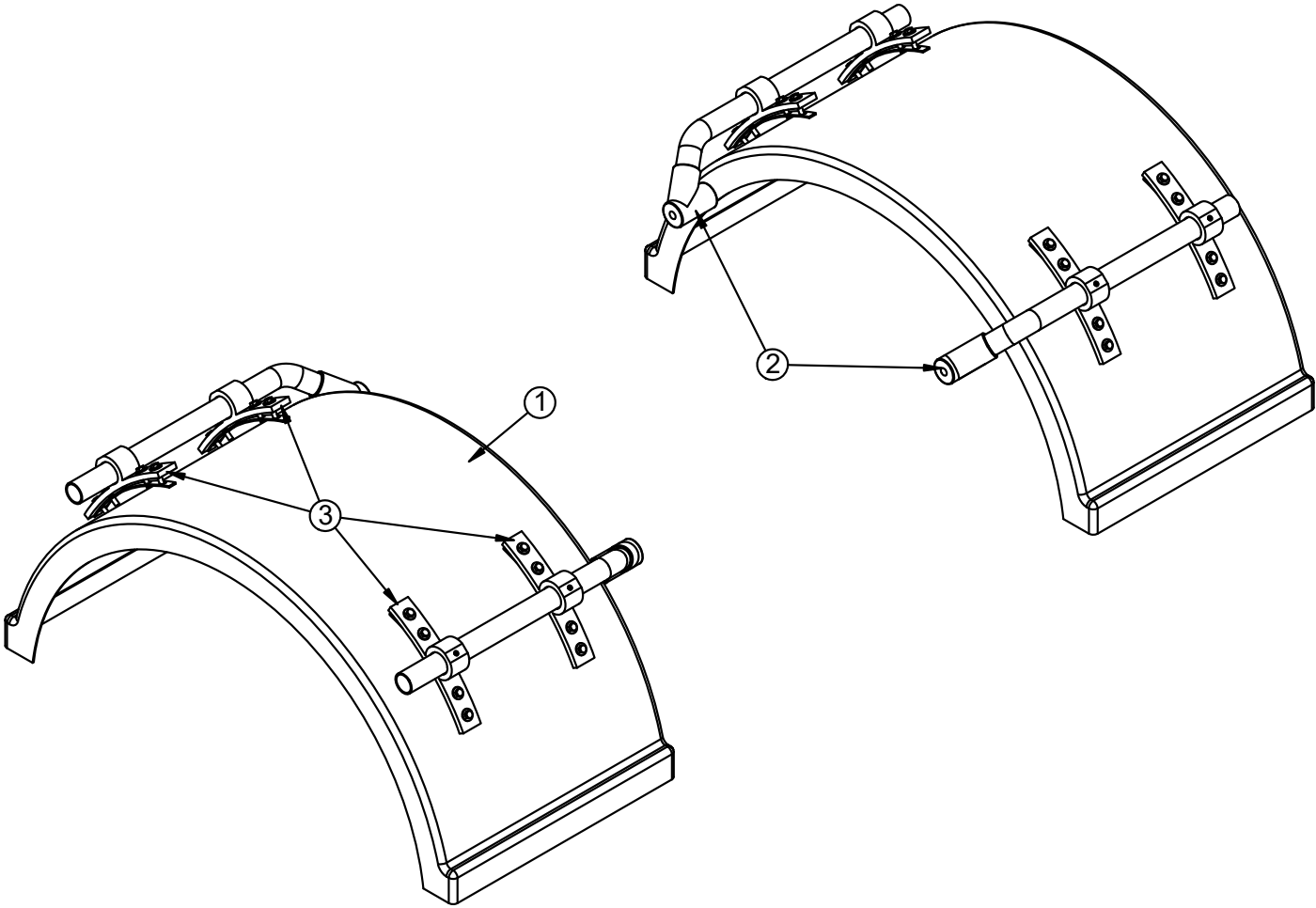
Fender Asm Single Steel - PN 127890



Fender Asm Single Steel - PN 127890 Parts List

PN 127890			
ITEM	PART	DESCRIPTION	QTY
1	47991	FENDER WLDMT STEEL 43.00 KPAC	2
2	0537	NUT 0.50-13 HH	4
3	46590	CAP SCR 0.50X1.50 SQ HD CP SS	4
4	127891	FENDER SUPPORT WELDMENT FOR NXT18	4
5	C1025	CAP SCR 0.63-11X2.00 HHGR8	8
6	C5902	WASHER 0.63 SAE FLAT YELLOW GR8	16
7	24868	NUT 0.63-11 HHGR8 NYLOC	8

Fender Asm 2-Ton Plastic - PN 107101



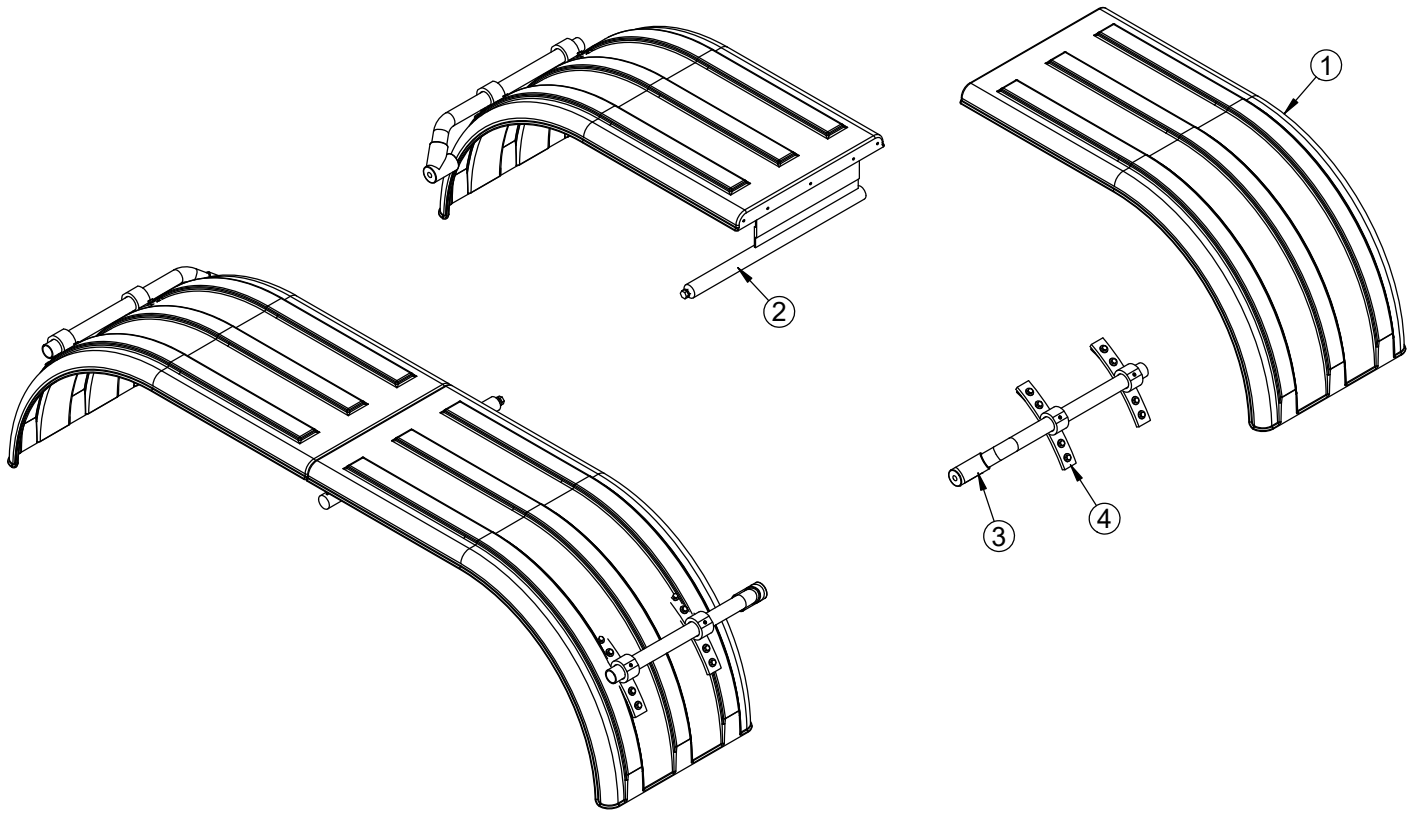
Fender Asm 2-Ton Plastic - PN 107101 Parts List

PN 107101

ITEM	PART	DESCRIPTION	QTY
1	4467	FENDER SINGLE 2 TON PLASTIC	2
2	5733	MTG KIT OFFSET POLY FENDER (FLEET)	2
3	7633	FENDER MOUNT ASM KIT	2

Fender Kit Tandem Poly - PN 58217

POLY SET MIN 900

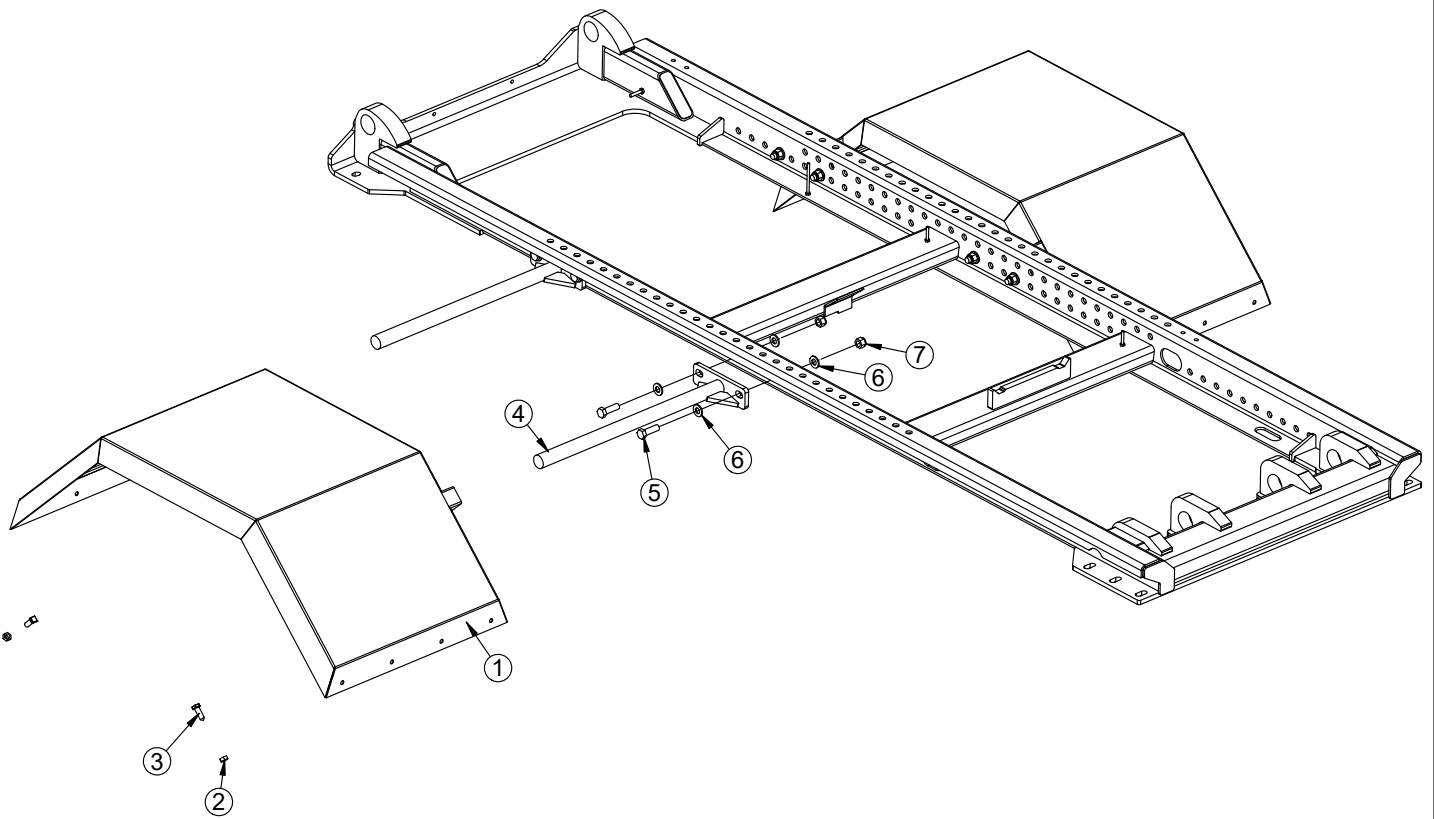


Fender Kit Tandem Poly - PN 58217 Parts List

PN 58217

ITEM	PART	DESCRIPTION	QTY
1	64060	FENDER POLY MIN 900 FRONT/REAR	4
2	102205	MNT KIT FENDER MID SUPPORT TANDEM POLY	1
3	5733	MTG KIT OFFSET POLY FENDER (FLEET)	2
4	7633	FENDER MOUNT ASM KIT	2

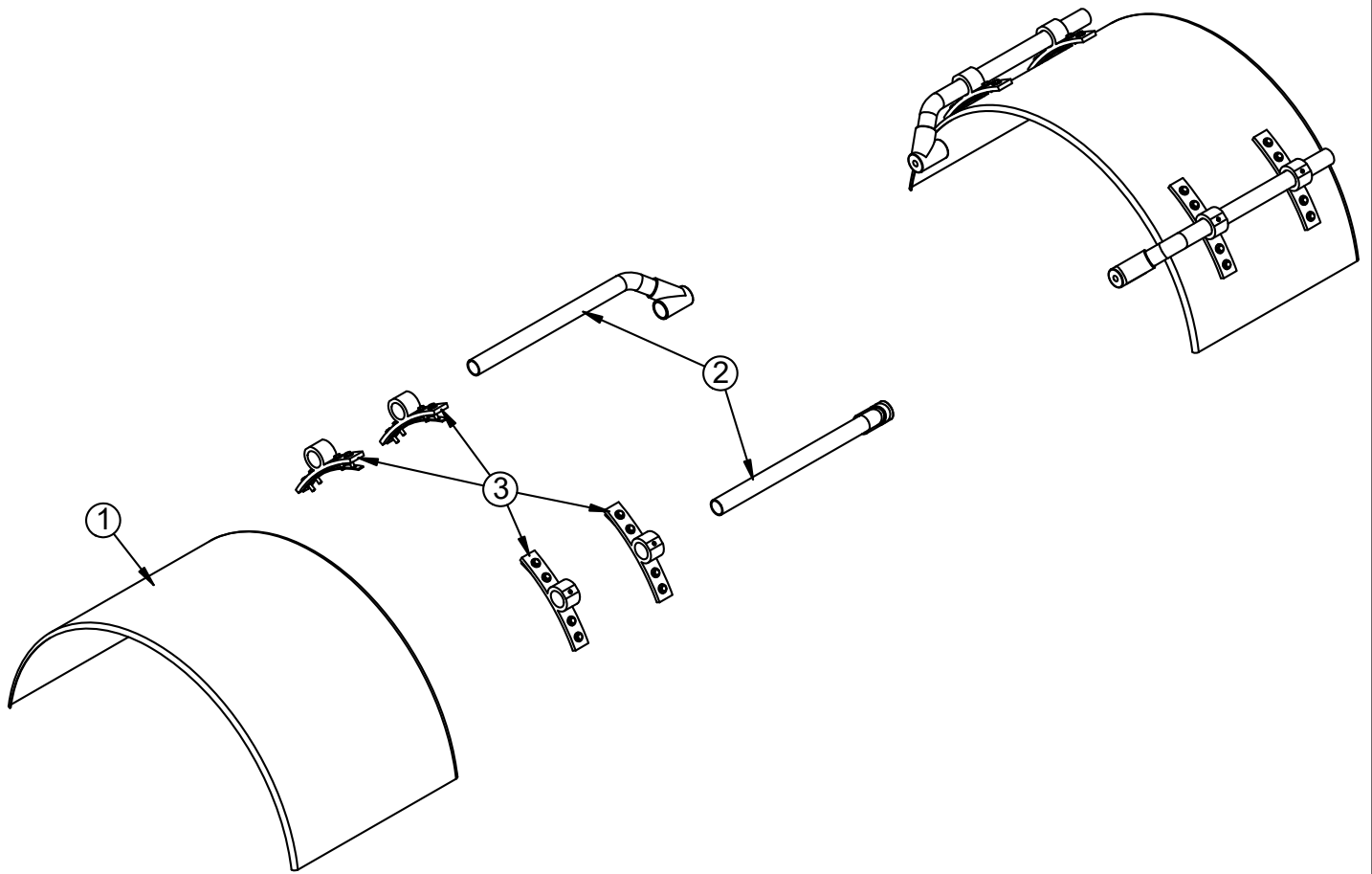
Fender Asm Single Steel 22.5 - PN 128015



Fender Asm Single Steel 22.5 - PN 128015 Parts List

PN 128015			
ITEM	PART	DESCRIPTION	QTY
1	46626	FENDER WLDMT STEEL SINGLE KPAC	2
2	0537	NUT 0.50-13 HH	4
3	46590	CAP SCR 0.50X1.50 SQ HD CP SS	4
4	127891	FENDER SUPPORT WELDMENT FOR NXT18	4
5	C1025	CAP SCR 0.63-11X2.00 HHGR8	8
6	C5902	WASHER 0.63 SAE FLAT YELLOW GR8	16
7	24868	NUT 0.63-11 HHGR8 NYLOC	8

Fender Asm AL Smooth Low-Pro - PN 66325

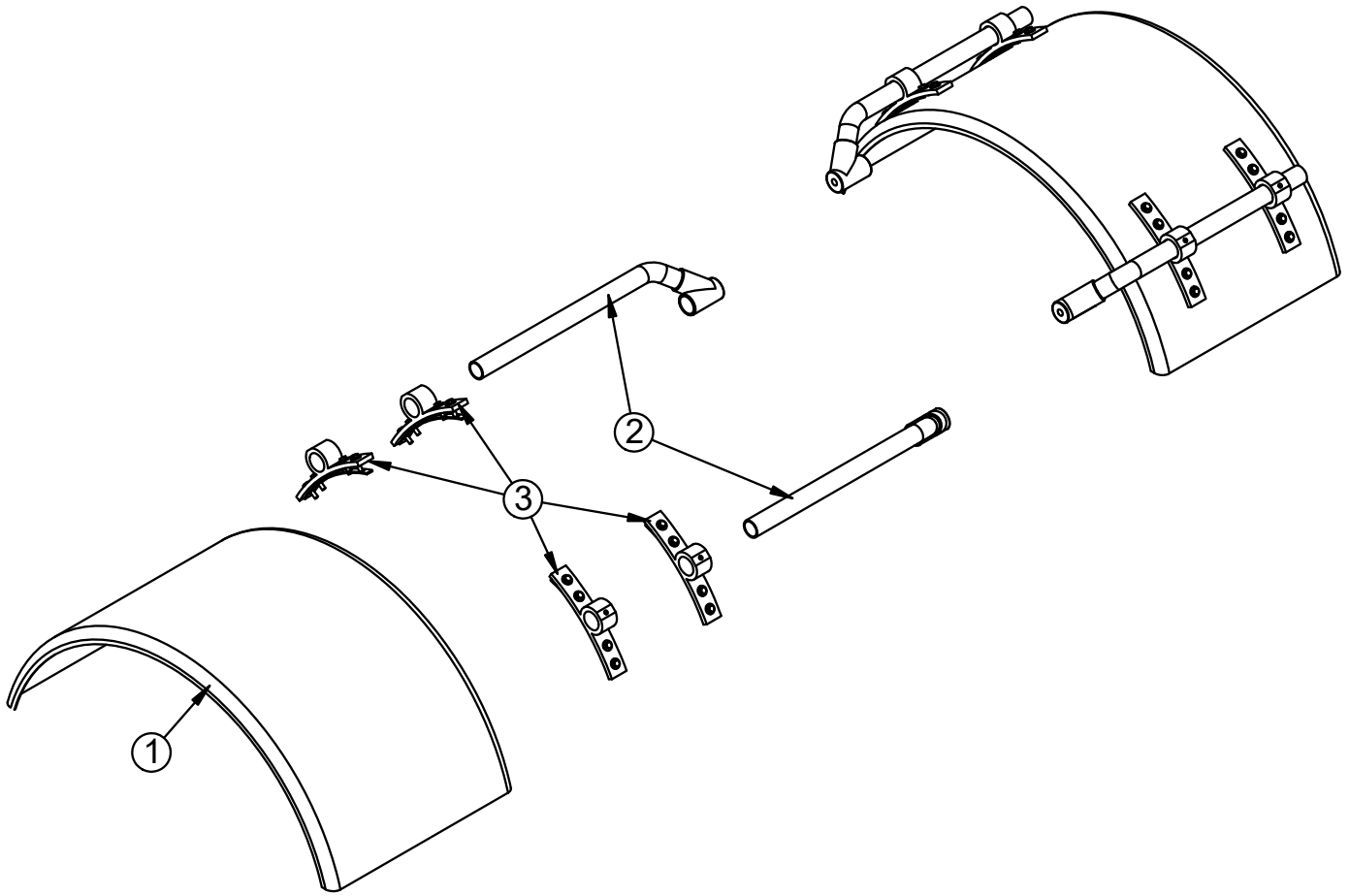


Fender Asm AL Smooth Low-Pro - PN 66325 Parts List

PN 66325

ITEM	PART	DESCRIPTION	QTY
1	66324	FENDER SINGLE AL SMOOTH LOW-PRO	2
2	5733	MTG KIT OFFSET POLY FENDER (FLEET)	2
3	7633	FENDER MOUNT ASM KIT	2

Fender Asm Single AL DPS - PN 127889

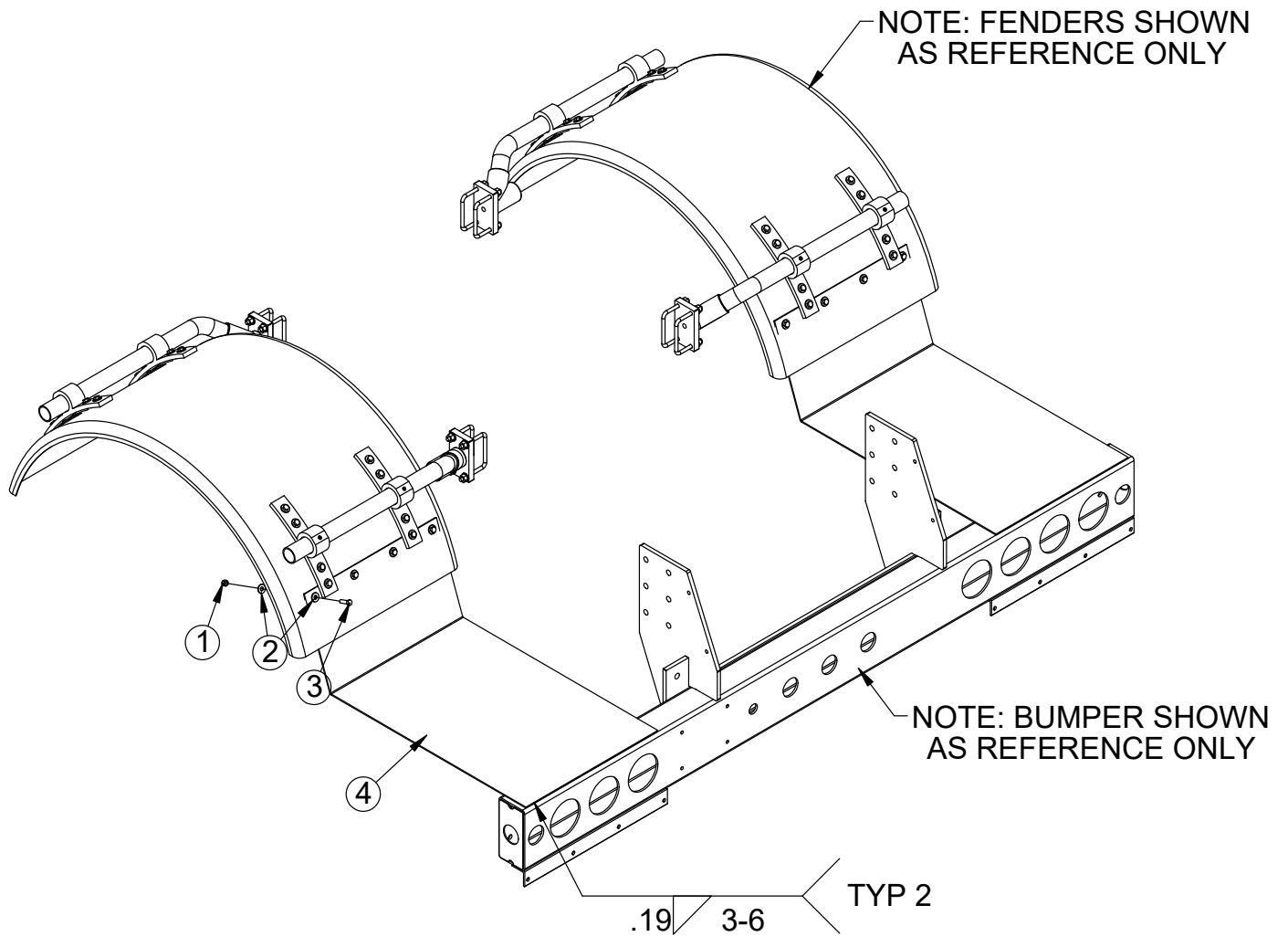


Fender Asm Single AL DPS - PN 127889 Parts List

PN 127889

ITEM	PART	DESCRIPTION	QTY
1	116165	FENDER SINGLE AL DPS CNE	2
2	5733	MTG KIT OFFSET POLY FENDER (FLEET)	2
3	7633	FENDER MOUNT ASM KIT	2

Kit Bumper Threshold Single Fender 30" - PN 119066



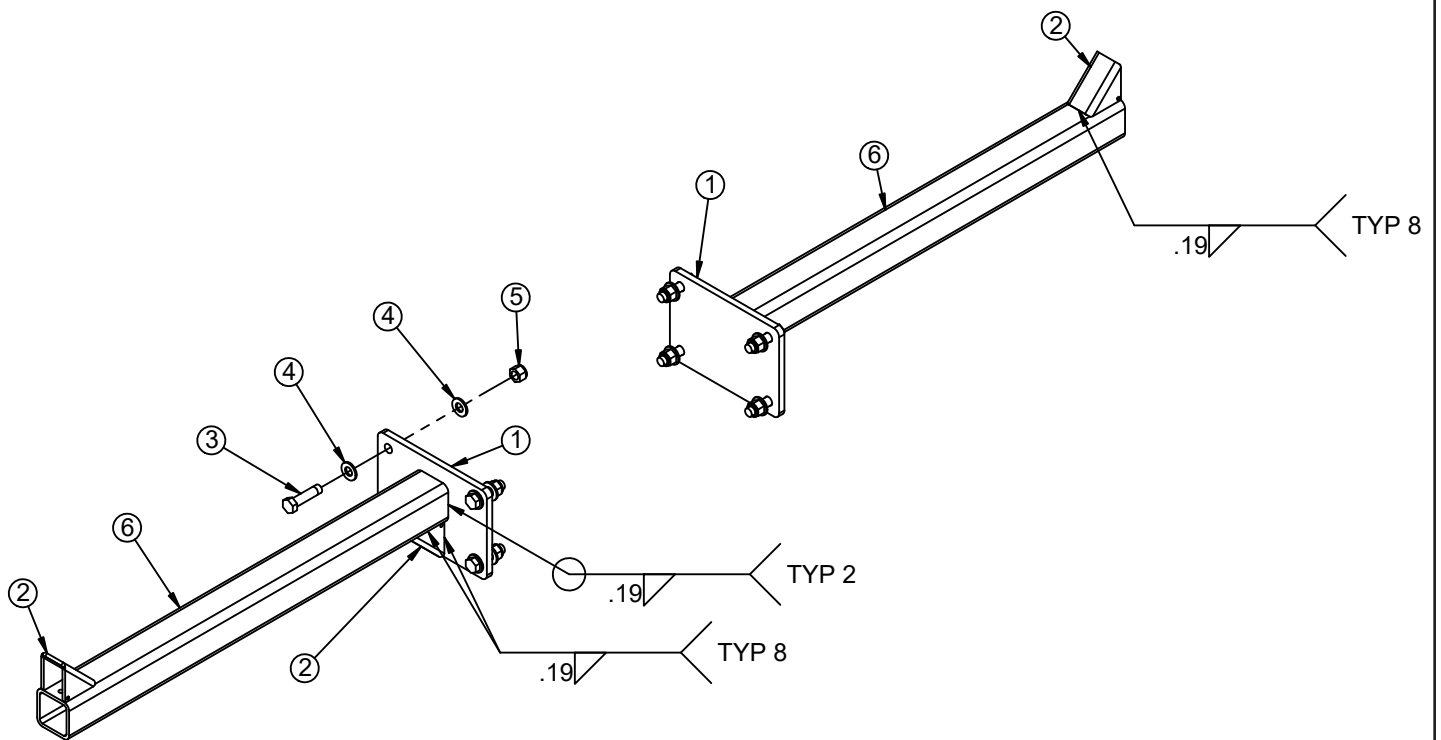
Kit Bumper Threshold Single Fender 30" - PN 119066

PN 119066

ITEM	PART	DESCRIPTION	QTY
1	0347	NUT 0.38-16 HHGR5 NYLOC	8
2	0346	WASHER 0.38 USS FLAT	16
3	0335	CAP SCR 0.38-16X1.25 HHGR5	8
4	116166	ANGLE FORMED 10GAX8.50X33.28X20.38	2

Mtg Kit Pioneer Tarper - PN 128210

SINGLE AXLE



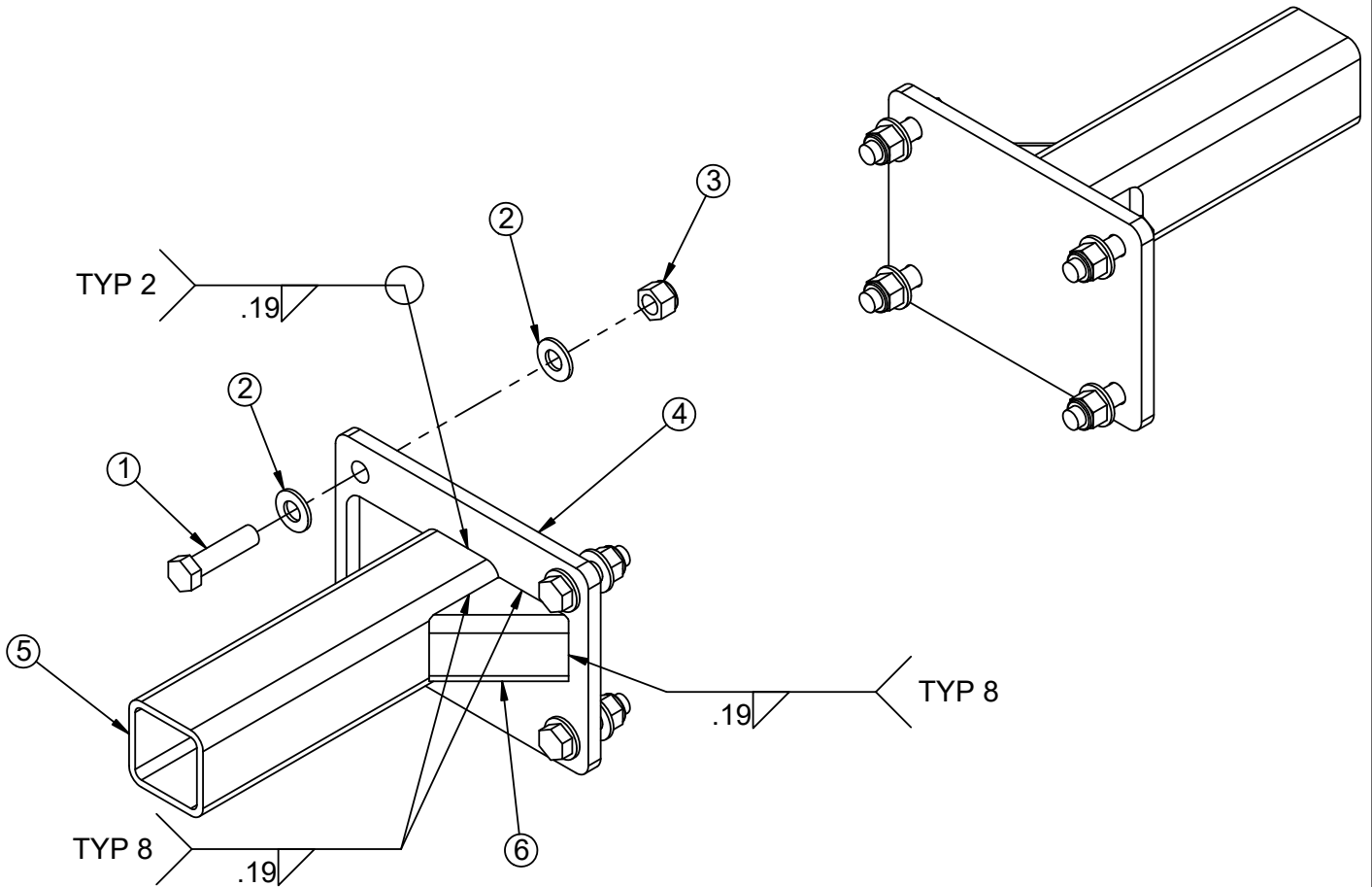
Mtg Kit Pioneer Tarper - PN 128210 Parts List

PN 128210

ITEM	PART	DESCRIPTION	QTY
1	128208	PLATE 0.50X7.19X10.25 HOLES	2
2	47209	BRKT FENDER KP60	4
3	C1026	CAP SCR 0.63-11X2.50 HHGR8	8
4	C5902	WASHER 0.63 SAE FLAT YELLOW GR8	16
5	24868	NUT 0.63-11 HHGR8 NYLOC	8
6	99676	TUBE 3.00X3.00X0.25WX35.59 W/HOLE	2

Mtg Kit Donovan Tarper - PN 128211

SINGLE AXLE



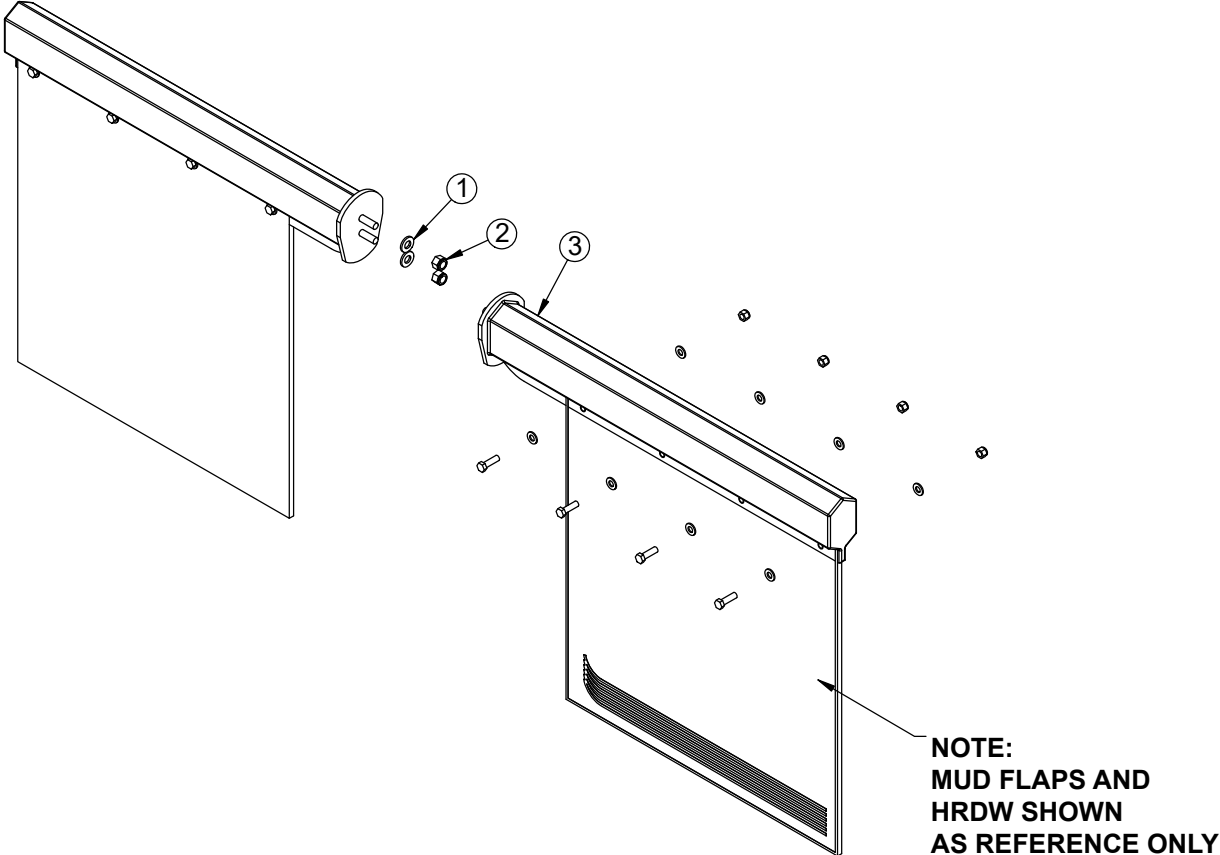
Mtg Kit Donovan Tarper - PN 128211 Parts List

PN 128211

ITEM	PART	DESCRIPTION	QTY
1	C1026	CAP SCR 0.63-11X2.50 HHGR8	8
2	C5902	WASHER 0.63 SAE FLAT YELLOW GR8	16
3	24868	NUT 0.63-11 HHGR8 NYLOC	8
4	128208	PLATE 0.50X7.19X10.25 HOLES	2
5	128212	TUBE 3.00X3.00X0.25WX12.00	2
6	47209	BRKT FENDER KP60	4

Mud Flap MNT Kit - PN 96895

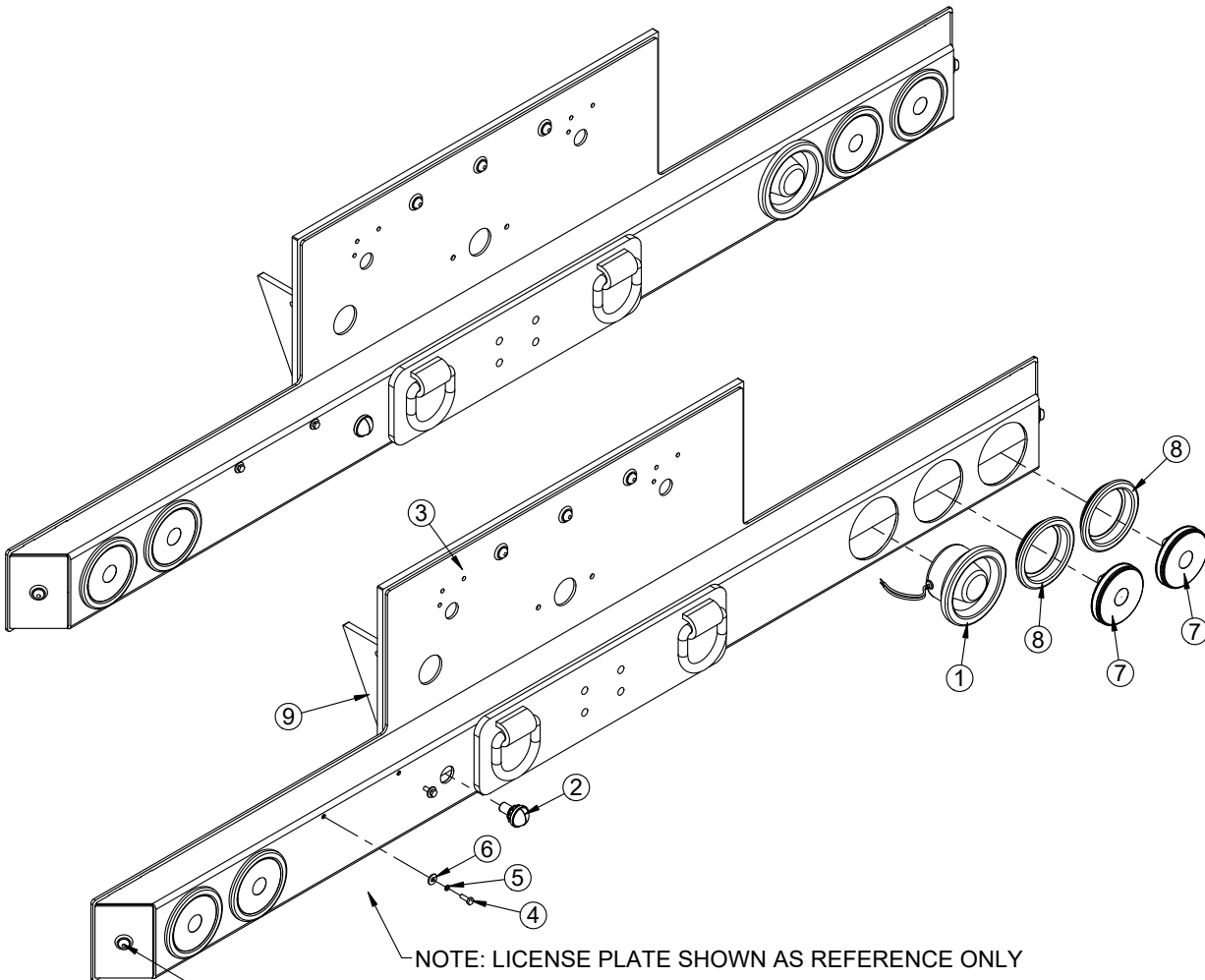
24X24 STELLAR WITH SPRING



Mud Flap MNT Kit - PN 96895 Parts List

PN 96895			
ITEM	PART	DESCRIPTION	QTY
1	D0790	WASHER 0.50 SAE FLAT YELLOW GR8	4
2	5468	NUT 0.50-13 HHGR8 NYLOC	4
3	96574	MUD FLAP MNT KIT W/SPRING (INCLUDES 2 MNTS)	1

Bumper Asm - 16K Pintle Flex - PN 81300



NOTE: LICENSE PLATE SHOWN AS REFERENCE ONLY

NOTE: (PN 56795 - LIGHT CLEARANCE RED .75IN MC L-11RKB) IS PART OF WIRE HARNESS (PN 82429) TYP 5

Bumper Asm - 16K Pintle Flex - PN 81300

PN 81300

ITEM	PART	DESCRIPTION	QTY
1	18742	BACKUP ALARM ACORN 97 DECIBAL	1
2	2320	LICENSE PLATE LIGHT ROUND 430 W	1
3	80563	BUMPER WLDMT FOR 30K PINTLE FLEX	1
4	0479	CAP SCR 0.25-20X0.75 HHGR5	2
5	0521	WASHER 0.25 LOCK	2
6	0340	WASHER 0.25 USS FLAT	2
7	82431	LIGHT STOP/TURN/TAIL/REV 4 RND GROTE LED	4
8	82430	GROMMET 4.00 ROUND LAMP (GROTE)	4
9	112272	GUSSET 0.50X4.00X4.00 W/HOLE	2

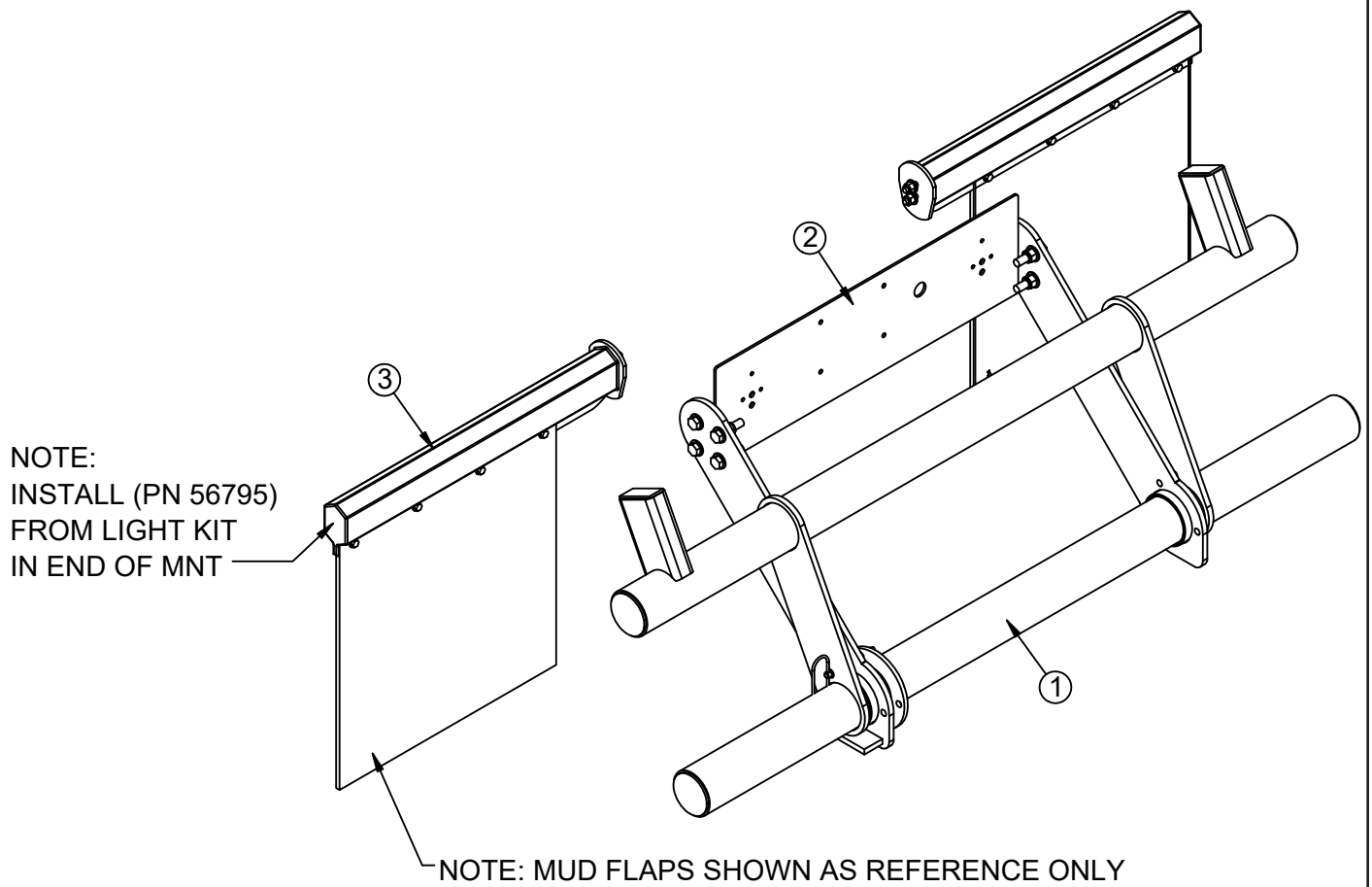
ITEMS NOT SHOWN

PART	DESCRIPTION	QTY
82429	WIRE HARNESS FMV108 HOOK LOADER GEN2	1
85371	WIRE HARNESS FMVSS108 CHASSIS GEN2	1
0540	REFLECTOR 3.00 AMBER	2
0541	REFLECTOR 3.00 RED	2

NOTES:

P / N 123761, LIGHT & INSTALL KIT BUMPER ASM 30K, INCLUDES ALL ITEMS EXCEPT BUMPER WELDMENT.

Bumper - Manual Fold Out w/Lights - PN 5348



Bumper - Manual Fold Out w/Lights PN 5348 Parts List

PN 5348

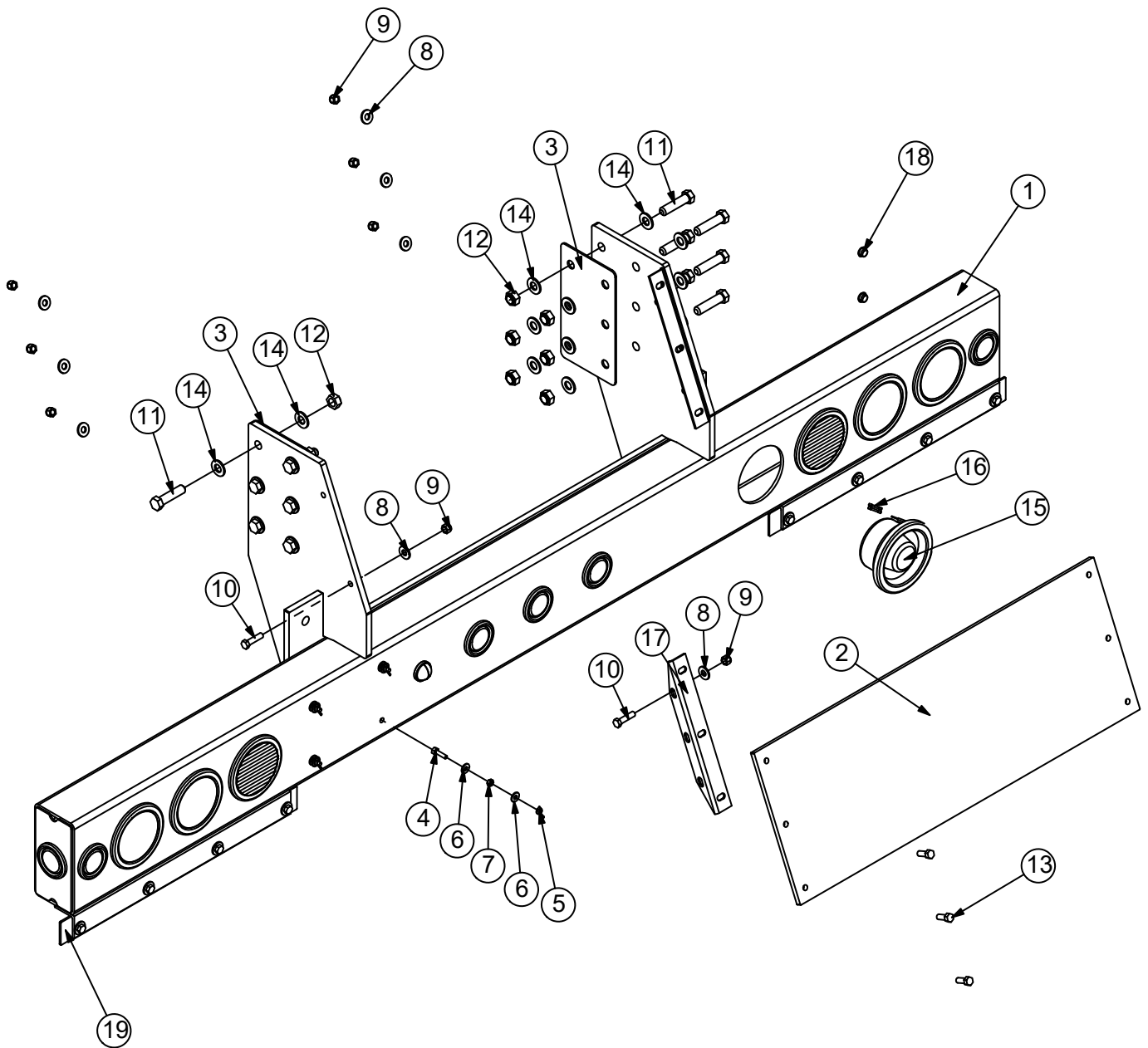
ITEM	PART	DESCRIPTION	QTY
1	4738	BUMPER FOLD DOWN 12000# LOADERS	1
2	98316	PLATE REAR LIGHT KIT MNT	1
3	96895	MUD FLAP MNT KIT 24X24 STELLAR W/SPRING	1
4	C5902	WASHER 0.63 SAE FLAT YELLOW GR8	16
5	24868	NUT 0.63-11 HHGR8 NYLOC	8
6	C1026	CAP SCR 0.63-11X2.50 HHGR8	8

NOTES:

ITEMS NOT SHOWN:

61732 - LIGHT KIT ICC BUMPER W/TARPER (QTY 1).

Bumper Asm HD 94.00 - PN 5407



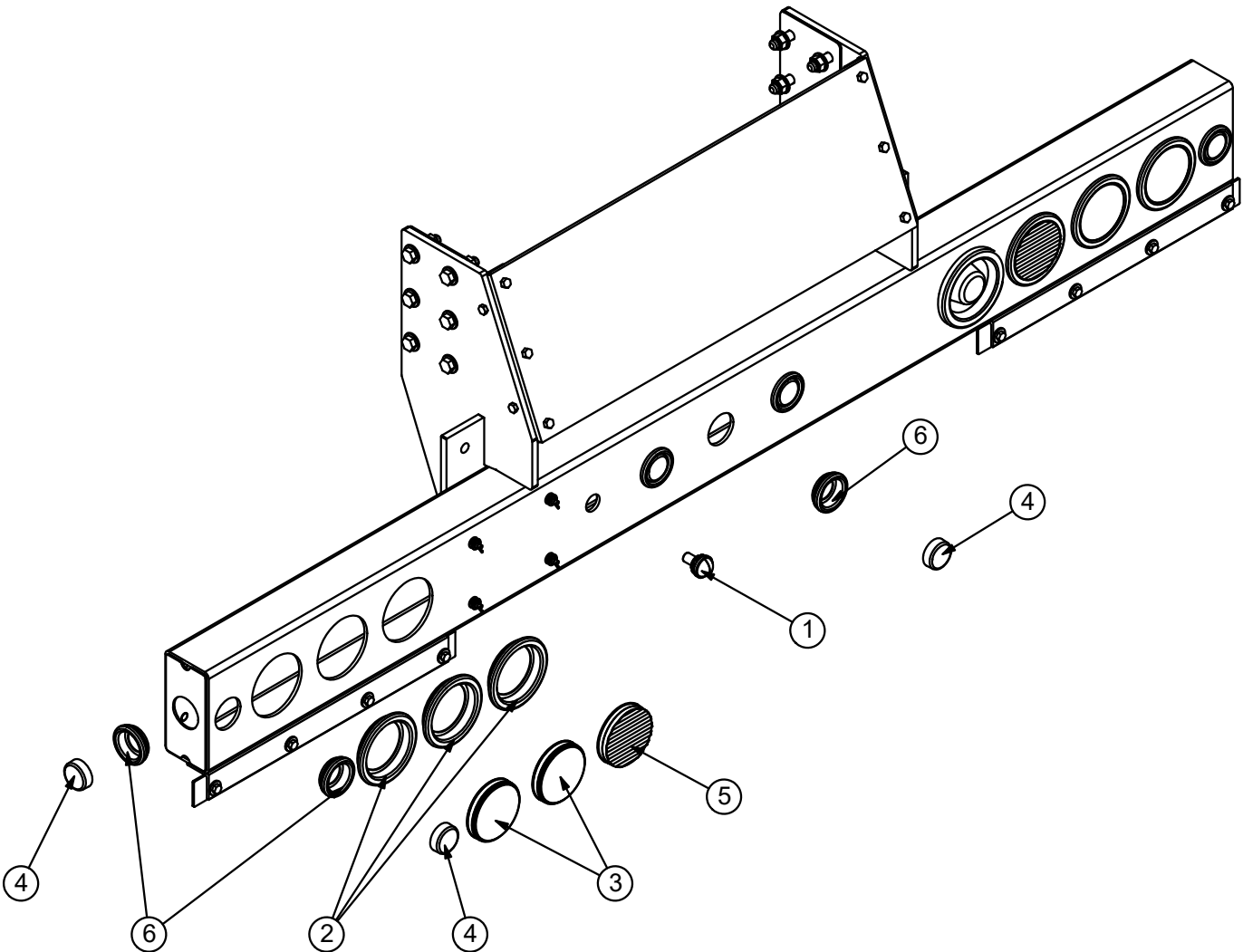
Bumper Asm HD 94.00 - PN 5407 Parts List

ITEM	PART	DESCRIPTION	QTY
1	B0734	BUMPER HOOK LOADER 94.00	1
2	31329	PLATE 0.38X12.00X34.50 PC BLACK	1
3	37699	SPACER .13 AL SHEAR PLATE BUMPER	2
4	0480	CAP SCR 0.25-20X1.00 HHGR5	4
5	0654	NUT 0.25-20 WING	4
6	0340	WASHER 0.25 FLAT	8
7	0533	NUT 0.25-20 HH	4
8	0346	WASHER 0.38 USS FLAT	10
9	0347	NUT 0.38-16 HHGR5 NYLOC	10
10	0345	CAP SCR 0.38-16X1.50 HHGR5	4
11	C1026	CAP SCR 0.63-11X2.50 HHGR8 ZY	12
12	24868	NUT 0.63-11 HHGR8 NYLOCK ZY	12
13	0351	CAP SCR 0.38-16X1.00 HHGR5	6
14	C5902	WASHER 0.63 SAE FLAT YELLOW GR8	24
15	18742	BACKUP ALARM ACORN 97 DECIBAL	1
16	C0073	TERML 16-14 BLUE BUTT WATER TIGHT	2
17	38861PC	ANGLE BRKT REAR PLT POWDERCOAT BLK	2
18	65956	PLUG PLASTIC 0.56 HOLE	4
19	119007	KIT MUD FLAP BACKING PLATES	1

ITEMS NOT SHOWN

PART	DESCRIPTION	QTY
45889	LIGHT KIT FMVSS108 CABLE HOIST	1
NOTE: LIGHT KIT ASSEMBLY (45889) SHOWN ON NEXT PAGE		

Bumper Asm HD 94.00 - PN 5407 (continued)



Bumper Asm HD 94.00 - PN 5407 Parts List (2)

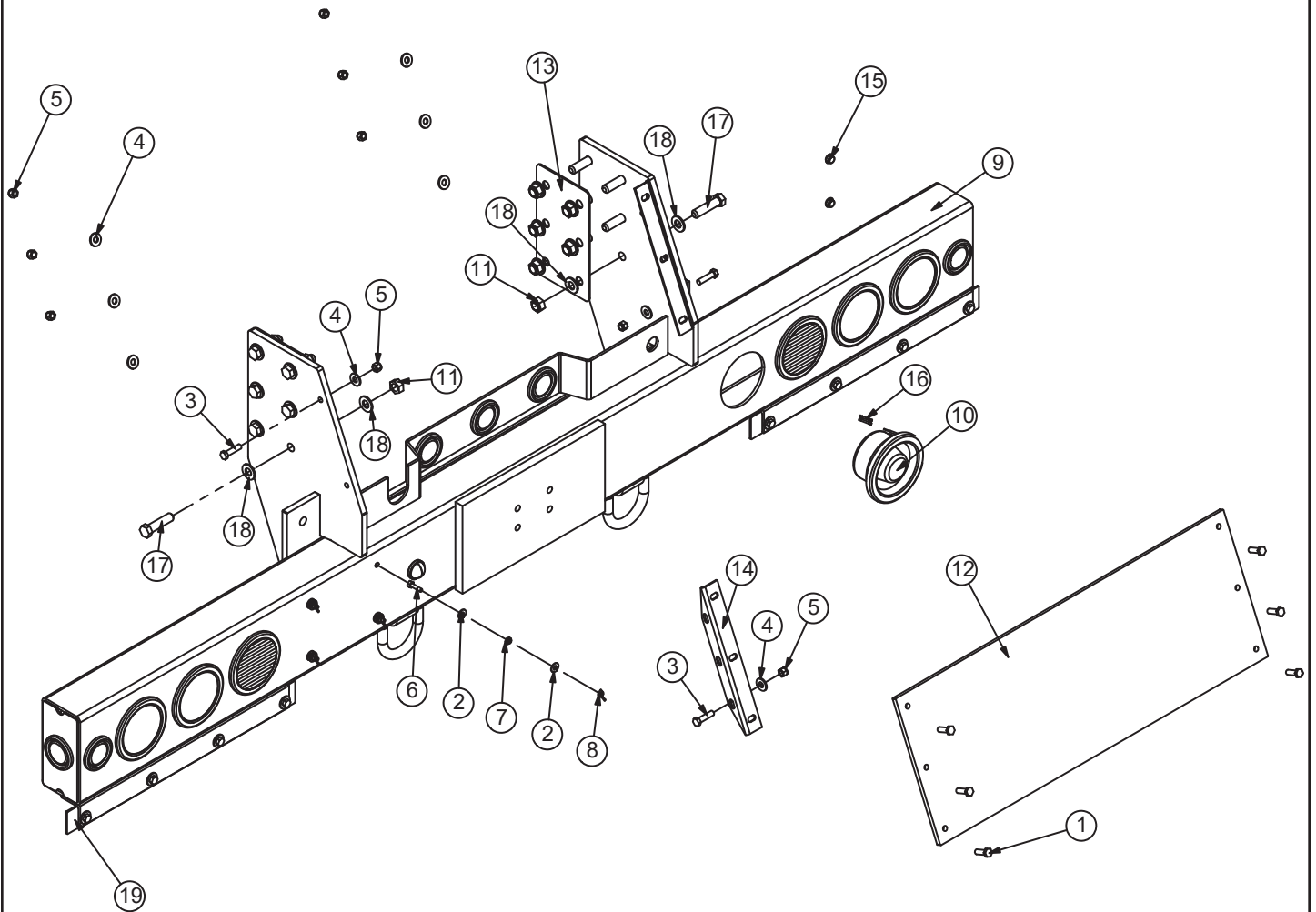
PN 5407

ITEM	PART	DESCRIPTION	QTY
1	2320	LICENSE PLATE LIGHT ROUND 430 W	1
2	10334	GROMMET 4.00 ROUND LAMP (PETERSON)	6
3	13143	LIGHT STOP/TURN/TAIL 4 RND LED	4
4	13145	LIGHT CLEARANCE RED RND 2 LED	7
5	27626	LIGHT BACKUP LED 62391	2
6	C4862	GROMMET FOR 2 CLEARANCE 30700	7

ITEMS NOT SHOWN

PART	DESCRIPTION	QTY
0540	REFLECTOR 3.00 AMBER	2
0541	REFLECTOR 3.00 RED	4
9464	PLUG MARKER LIGHT PL10 FEMALE	1
38056	WIRE HARNESS FMV108 HOOK LOADER	1
40310	WIRE HARNESS FMVSS108 CHASSIS	1

Bumper Asm Bolt On 30K Pintle - PN 17441



Bumper Asm Bolt On 30K Pintle - PN 17441 Parts List

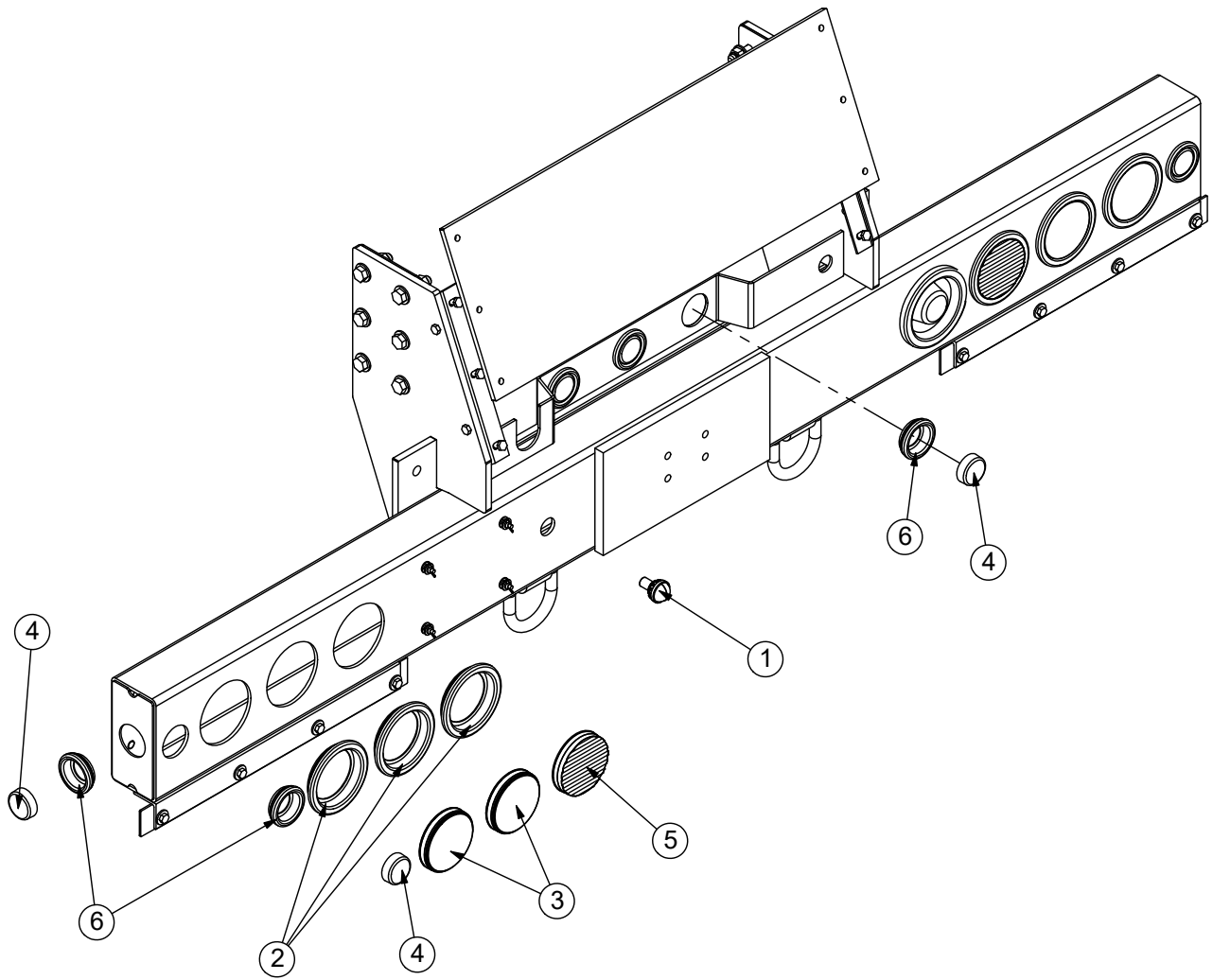
PN 17441

ITEM	PART	DESCRIPTION	QTY
1	0335	CAP SCR 0.38-16X1.25 HHGR5	6
2	0340	WASHER 0.25 FLAT	8
3	0345	CAP SCR 0.38-16X1.50 HHGR5	4
4	0346	WASHER 0.38 USS FLAT	10
5	0347	NUT 0.38-16 HHGR5 NYLOC	10
6	0480	CAP SCR 0.25-20X1.00 HHGR5	4
7	0533	NUT 0.25-20 HH	4
8	0654	NUT 0.25-20 WING	4
9	17413	BUMPER WLDMT FOR 30K PINTLE	1
10	18742	BACKUP ALARM ACORN 97 DECIBAL	1
11	24868	NUT 0.63-11 HHGR8 NYLOCK ZY	12
12	31329	PLATE 0.38X12.00X34.50 PC BLACK	1
13	37699	SPACER .13 AL SHEAR PLATE BUMPER	2
14	38861PC	ANGLE BRKT REAR PLT POWDERCOAT BLK	2
15	65956	PLUG PLASTIC 0.56 HOLE	4
16	C0073	TERML 16-14 BLUE BUTT WATER TIGHT	2
17	C1026	CAP SCR 0.63-11X2.50 HHGR8 ZY	12
18	C5902	WASHER 0.63 SAE FLAT YELLOW GR8	24
19	119007	KIT MUD FLAP BACKING PLATES	1

ITEMS NOT SHOWN

PART	DESCRIPTION	QTY
45889	LIGHT KIT FMVSS108 CABLE HOIST	1
NOTE: LIGHT KIT ASSEMBLY (45889) SHOWN ON NEXT PAGE		

Bumper Asm Bolt On 30K Pintle - PN 17441 (continued)



Bumper Asm Bolt On 30K Pintle - PN 17441 Parts List (2)

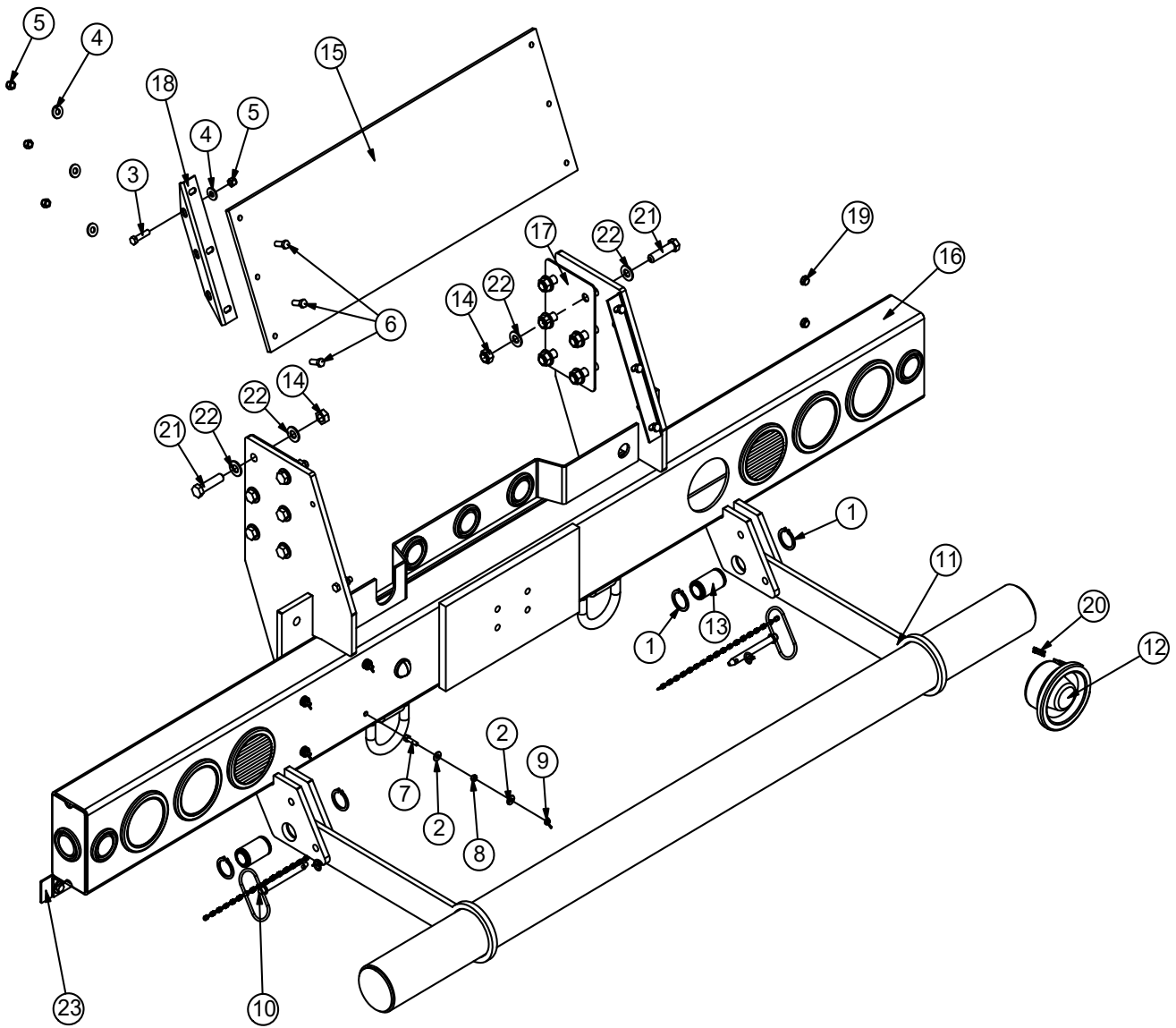
PN 17441

ITEM	PART	DESCRIPTION	QTY
1	2320	LICENSE PLATE LIGHT ROUND 430 W	1
2	10334	GROMMET 4.00 ROUND LAMP (PETERSON)	6
3	13143	LIGHT STOP/TURN/TAIL 4 RND LED	4
4	13145	LIGHT CLEARANCE RED RND 2 LED	7
5	27626	LIGHT BACKUP LED 62391	2
6	C4862	GROMMET FOR 2 CLEARANCE 30700	7

ITEMS NOT SHOWN

PART	DESCRIPTION	QTY
0540	REFLECTOR 3.00 AMBER	2
0541	REFLECTOR 3.00 RED	4
9464	PLUG MARKER LIGHT PL10 FEMALE	1
38056	WIRE HARNESS FMV108 HOOK LOADER	1
40310	WIRE HARNESS FMVSS108 CHASSIS	1

Bumper Asm Pintle w/Folding Bumper - PN 31920

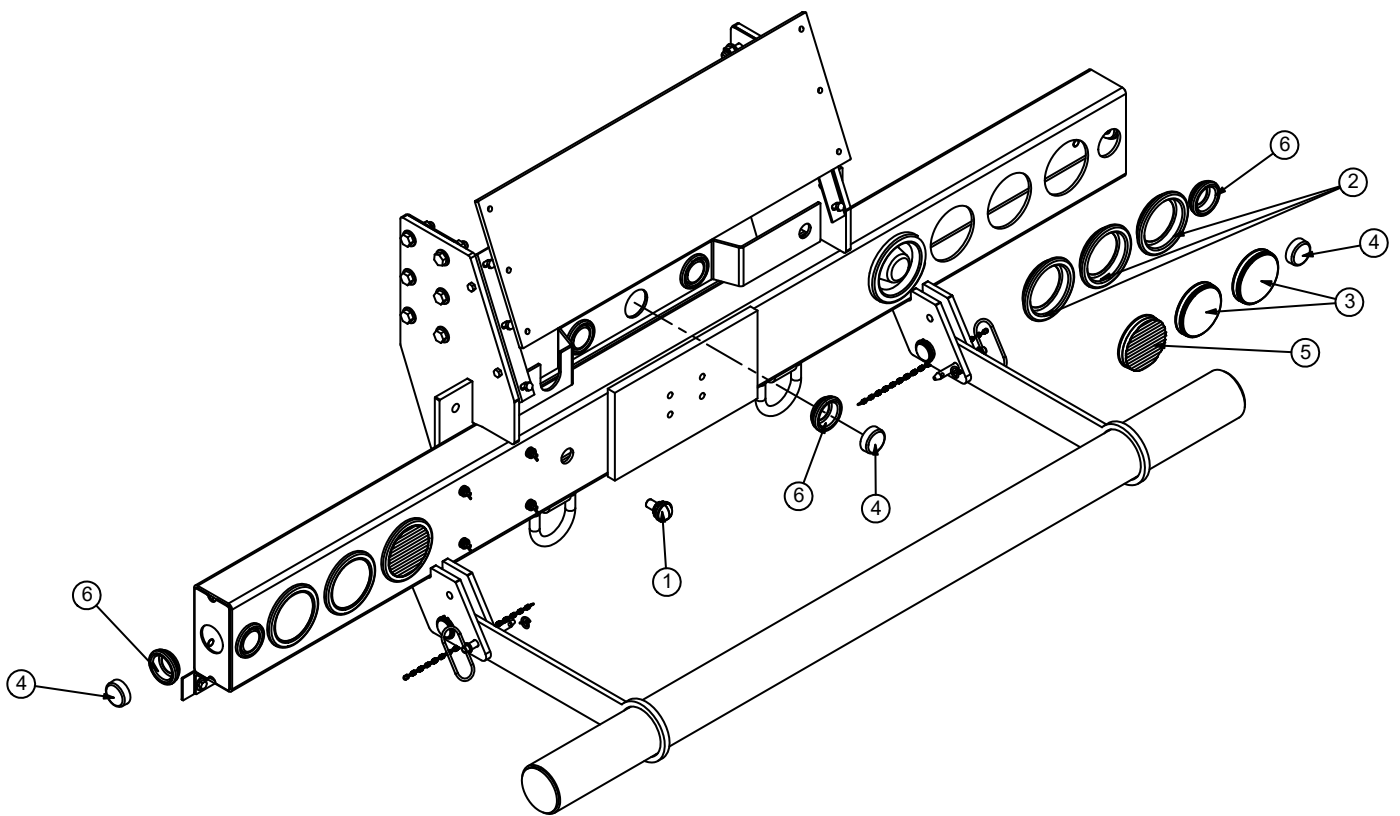


Bumper Asm Pintle w/Folding Bumper - PN 31920 Parts

PN 31920			
ITEM	PART	DESCRIPTION	QTY
1	0246	SNAP RING ID 7200 150	4
2	0340	WASHER 0.25 FLAT	8
3	0345	CAP SCR 0.38-16X1.50 HHGR5	4
4	0346	WASHER 0.38 USS FLAT	10
5	0347	NUT 0.38-16 HHGR5 NYLOC	10
6	0351	CAP SCR 0.38-16X1.00 HHGR5	6
7	0480	CAP SCR 0.25-20X1.00 HHGR5	4
8	0533	NUT 0.25-20 HH	4
9	0654	NUT 0.25-20 WING	4
10	C2036	PIN .50X4.00 W/LYNCH PIN (HITCH)	2
11	8130	BUMPER SPIDER FOLD DOWN	1
12	18742	BACKUP ALARM ACORN 97 DECIBAL	1
13	22730CR	PIN 1.50X2.63 ZC	2
14	24868	NUT 0.63-11 HHGR8 NYLOCK ZY	12
15	31329	PLATE 0.38X12.00X34.50 PC BLACK	1
16	31918	BUMPER PINTLE W/FOLDING BUMPER	1
17	37699	SPACER .13 AL SHEAR PLATE BUMPER	2
18	38861PC	ANGLE BRKT REAR PLT POWDERCOAT BLK	2
19	65956	PLUG PLASTIC 0.56 HOLE	4
20	C0073	TERML 16-14 BLUE BUTT WATER TIGHT	2
21	C1026	CAP SCR 0.63-11X2.50 HHGR8 ZY	12
22	C5902	WASHER 0.63 SAE FLAT YELLOW GR8	24
23	119007	KIT MUD FLAP BACKING PLATES	1

ITEMS NOT SHOWN		
PART	DESCRIPTION	QTY
45889	LIGHT KIT FMVSS108 CABLE HOIST	1
NOTE: LIGHT KIT ASSEMBLY (45889) SHOWN ON NEXT PAGE		

Bumper Asm Pintle w/Folding Bumper - PN 31920 (Cont.)



Bumper Asm Pintle w/Folding Bumper - PN 31920 Parts

PN 31920

ITEM	PART	DESCRIPTION	QTY
1	2320	LICENSE PLATE LIGHT ROUND 430 W	1
2	10334	GROMMET 4.00 ROUND LAMP (PETERSON)	6
3	13143	LIGHT STOP/TURN/TAIL 4 RND LED	4
4	13145	LIGHT CLEARANCE RED RND 2 LED	7
5	27626	LIGHT BACKUP LED 62391	2
6	C4862	GROMMET FOR 2 CLEARANCE 30700	7

ITEMS NOT SHOWN

PART	DESCRIPTION	QTY
0540	REFLECTOR 3.00 AMBER	2
0541	REFLECTOR 3.00 RED	4
9464	PLUG MARKER LIGHT PL10 FEMALE	1
38056	WIRE HARNESS FMV108 HOOK LOADER	1
40310	WIRE HARNESS FMVSS108 CHASSIS	1



Subject to Change without Notification.
© 2023 Stellar Industries, Inc.