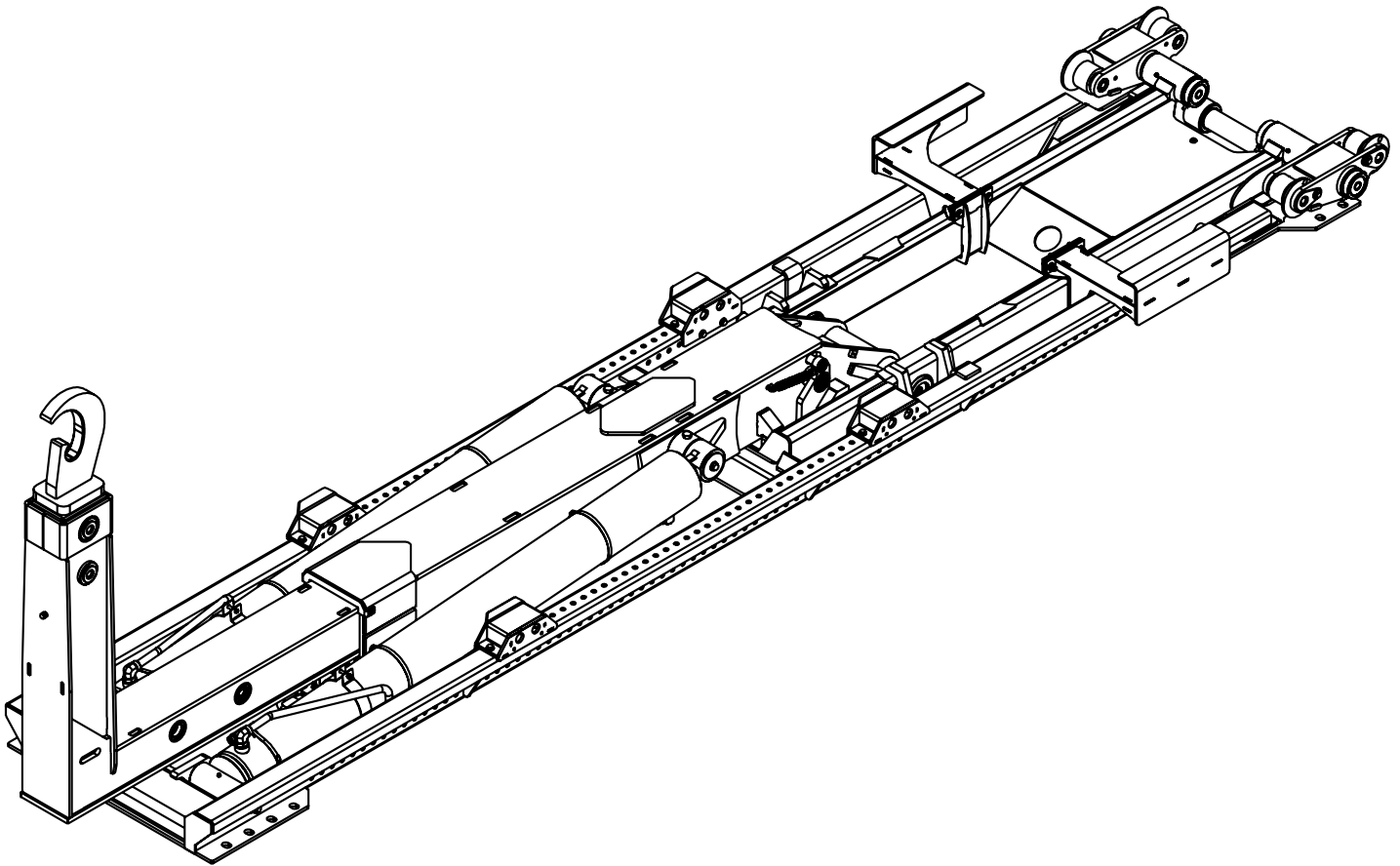




# NXT52 Hooklift Parts Manual

Installation • Assembly Drawings • Parts



**Stellar Industries, Inc.**

**190 State Street**

**PO Box 169**

**Garner, IA 50438**

**800-321-3741**

**Fax: 641-923-2811**

**[www.stellarindustries.com](http://www.stellarindustries.com)**

Subject to Change without Notification.  
© 2023 Stellar Industries, Inc.

REV1  
PN: 131926

# P65 Warning / Warranty Info / Cold Weather Notice

## **WARNING**

Operating, maintaining, and servicing a Stellar product may expose you to chemicals including, but not limited to, engine exhaust, carbon monoxide, phthalates, and lead. These chemicals are known to the State of California to cause cancer and birth defects (or other reproductive harm). To keep your exposure to a minimum, be sure to avoid breathing exhaust and service your Stellar product in a well-ventilated area while wearing gloves or washing your hands frequently. For more information, go to [www.P65Warnings.ca.gov/passenger-vehicle](http://www.P65Warnings.ca.gov/passenger-vehicle).



[www.p65warnings.ca.gov](http://www.p65warnings.ca.gov)

## **NOTICE**

### *Cold Weather Performance*

*Although clear data on cold weather performance from every steel manufacturer is not available for all types and thicknesses of steel, Stellar Industries is confident that the weldments on our products will operate to 100% of their intended purpose to temperatures down to -40° F / C.*

*It is recommended if Stellar manufactured equipment needs to be used in temperatures below -40° F / C, the operator should pull the unit into a climate-controlled area and allow the weldments to warm up to and then maintain a temperature above this level.*

**For Technical Questions, Information, Parts, or Warranty, Call Toll-Free at**

**800-321-3741**

Hours: Monday - Friday, 8:00 a.m. - 5:00 p.m. CST

Or email at the following addresses:

**Technical Questions, and Information**

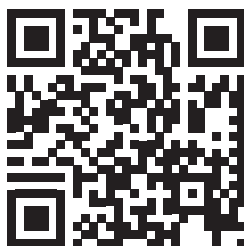
[service@stellarindustries.com](mailto:service@stellarindustries.com)

**Order Parts**

[parts@stellarindustries.com](mailto:parts@stellarindustries.com)

**Warranty Information**

[warranty@stellarindustries.com](mailto:warranty@stellarindustries.com)



[www.stellarindustries.com](http://www.stellarindustries.com)

# Table of Contents

Introduction .....	IV
<b>Chapter 1 - Specifications .....</b>	<b>1</b>
NXT 52 Specifications .....	2
NXT 52 Specifications - Continued .....	3
Serial Tag Location .....	4
<b>Chapter 2 - Assembly Drawings NXT52 .....</b>	<b>5</b>
NXT52 Base Assembly - PN 129228 .....	6
NXT52 Base Assembly - PN 129228 Parts List .....	7
NXT52 Dump Assembly - PN 128940 .....	8
NXT52 Dump Assembly - PN 128940 Parts List .....	9
NXT52 Secondary/Dump Latch Asm - PN 129351 .....	10
Secondary/Dump Latch Asm - PN 129351 Parts List .....	11
NXT52 Main Cylinder Assembly - PN 129352 .....	12
NXT52 Main Cylinder Assembly - PN 129352 Parts List .....	13
NXT52 Jib Asm 54/62HH, Manual PN 129059 .....	14
NXT52 Jib Asm 54/62HH, Manual PN 129059 Parts List .....	15
NXT52 Jib Asm 54/62HH, Hydraulic PN 129244 .....	16
NXT52 Jib Asm 54/62HH, Hydraulic PN 129244 .....	17
NXT52 Hose Track Assembly PN 130154 .....	18
NXT52 Hose Track Assembly PN 130154 Parts List .....	19
NXT52 Cylinder Assembly PN 127967 .....	20
NXT52 Cyl Asm 4.00 x 48.00 - PN 127968 .....	22
NXT52 Cyl Asm 4.00 x 48.00 - PN 127968 Parts List .....	23
<b>Chapter 3 - Auxillary Assemblies NXT52 .....</b>	<b>25</b>
Mounting Kit - PN 129440 .....	26
Mounting Kit - PN 129440 Parts List .....	27
Reservoir Assembly - PN 130144 .....	28
Reservoir Assembly - PN 130144 Parts List .....	29
Valve Bank - PN 129905 .....	30
Valve Bank - PN 129905 Parts List .....	31
Valve Bank - PN 132682 .....	32
3-Section Valve Bank Assembly- PN 132329 .....	34
3-Section Valve Bank Assembly- PN 132329 Parts List .....	35
3-Sect Valve Bank Asm w Port Relief - PN 132328 .....	36
3-Sect Valve Bank Asm w Port Relief - PN 132328 Parts .....	37
Hose Kit - PN 129649 .....	38
3-Section Hose Kit - PN 132321 .....	39
Controller Assembly PN 131283 .....	40
Controller Assembly PN 131283 Parts List .....	41
Controller Asm, 3-Sect w VB Asm PN 131705 .....	42
Controller Asm, 3-Sect w VB Asm PN 131705 Parts List .....	43
Air Schematic Control Tower Asm PN 132688 .....	44
Air Schematic Control Tower Asm PN 132688 Parts List .....	45
Electrical Schematic PN 132702 .....	46
Electrical Schematic PN 132702 Parts List .....	47
Face Seal / O-Ring Size Chart .....	48
Torque Data Chart .....	49
Torquing Information & Warnings .....	49
Raised Hoist Indicator Light Kit - PN 127153 .....	50
Raised Hoist Indicator Light Kit - PN 127153 Parts List .....	51
<b>Chapter 4 - Accessory Drawings .....</b>	<b>53</b>
Saddle Asm Skid Plate - PN 129504 .....	54
Saddle Asm Skid Plate - PN 129504 Parts List .....	55
Saddle Asm Roller - PN 129373 .....	56
Saddle Asm Roller - PN 129373 Parts List .....	57
NXT52 Outside Latch Asm Bolt On - PN 129856 .....	58
NXT52 Outside Latch Asm Bolt On - 129856 Parts List .....	59
Skid Drawing 61.75HH .....	60
Skid Drawing 54.00HH - PN 133932 .....	61
NXT52 Hooklift Decals - PN 127720 .....	62

# Introduction

A copy of this manual is provided with every hooklift and can be found in the hard plastic manual case that is installed on the chassis. A copy of this manual shall remain with the hooklift at all times.

Throughout the manual, three signal words will be used to bring attention to important items:

## **NOTICE**

**NOTICE** indicates a practice not related to physical injury.

## **⚠ WARNING**

**WARNING** indicates a hazardous situation which, if not avoided, could result in death or serious injury.

## **⚠ DANGER**

**DANGER** indicates a hazardous situation which, if not avoided, will result in death or serious injury.

Information contained within this manual does not cover operation, maintenance, or troubleshooting. Please refer to the General Hooklift Operator's Manual, part number 127718 for details on these items.

This manual is not binding. Stellar Industries, Inc. reserves the right to change, at any time, any or all of the items, components, and parts deemed necessary for product improvement or commercial/production purposes. This right is kept with no requirement or obligation for immediate mandatory updating of this manual.

If more information is required or technical assistance is needed, or if you feel that any part of this manual is unclear or incorrect, please contact the Stellar Customer Service Department by phone at 800-321-3741 or email at [service@stellarindustries.com](mailto:service@stellarindustries.com).



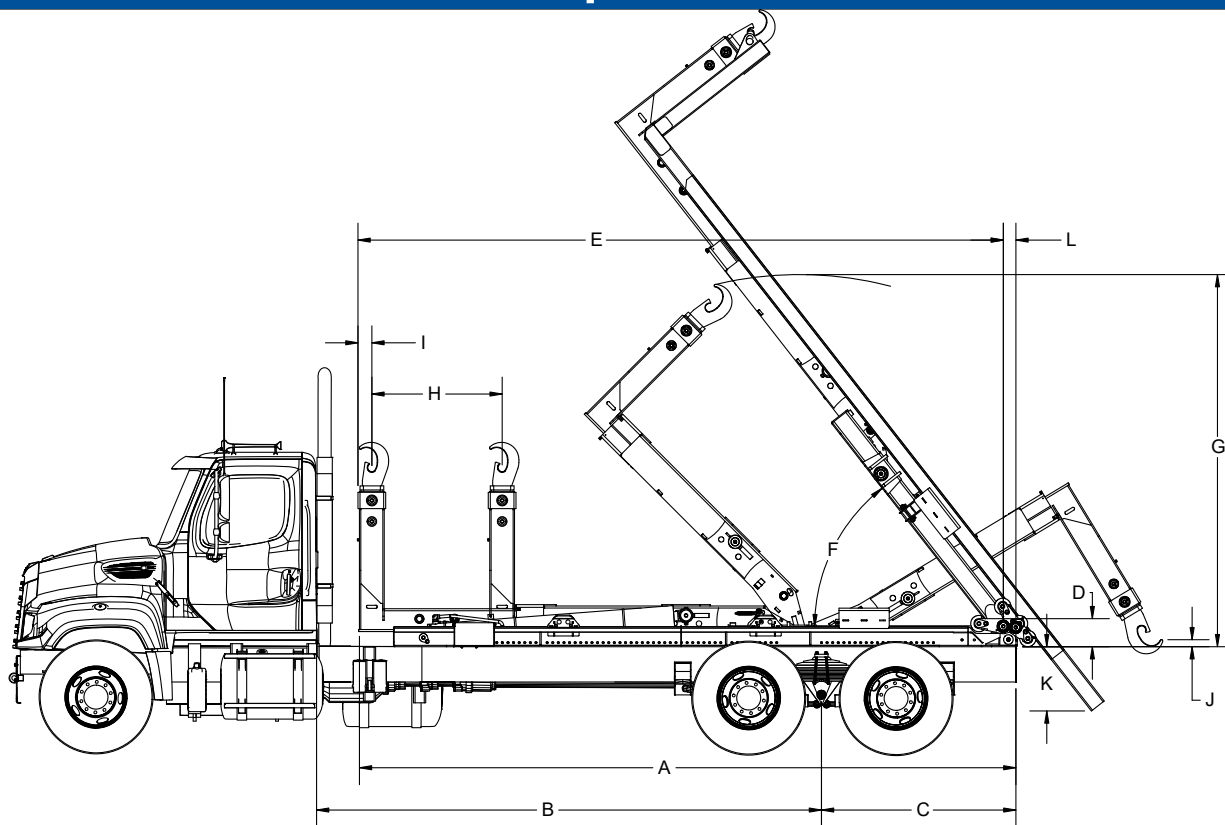
[www.stellarindustries.com](http://www.stellarindustries.com)

# Chapter 1 - Specifications

## Chapter Contents

NXT 52 Specifications .....	2
NXT 52 Specifications - Continued .....	3
Serial Tag Location.....	4

# NXT52 Specifications



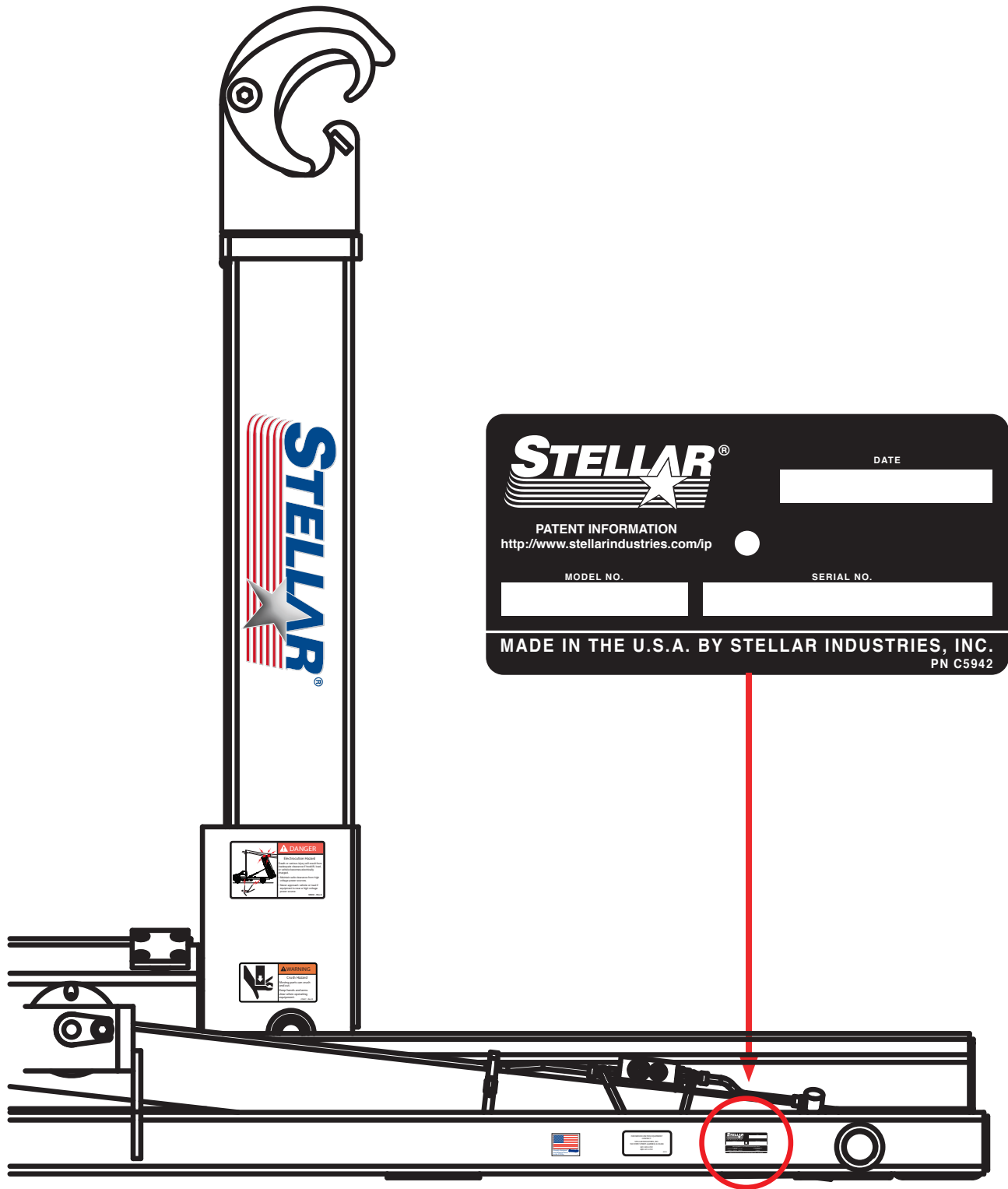
		NXT52S- 54" OR 62"	NXT52L 54" OR 62"
A	OVERALL LENGTH	229.50" (5,829 mm)	242.50" (6,160 mm)
B	CAB-TO-AXLE RANGE	174" TO 202" (4,449 to 5,181 mm)	182" TO 214" (4,623 TO 5,436 mm)
C	AFTER FRAME RANGE	59" (1,498 mm)	64" (1,626 mm)
D	LOADER HEIGHT	10.50" (267 mm)	
E	FRONT OF JIB TO CENTERLINE OF ROLLER	227" (5,766 mm)	240" (6,096 mm)
F	DUMP ANGLE	52°	
G	MAX TILT HEIGHT	54" HH: 137.13" (3,483 mm) 62" HH: 141.38" (3,591 mm)	
H	JIB TRAVEL	35" (889 mm)	48" (1,219 mm)
I	FRONT OF JIB TO CENTERLINE OF HOOK	5.19" (132 mm)	
J	HOOK BELOW FRAME	54" HH: 3" (76 mm) Above Frame 62" HH: 3.56" (90 mm) Below Frame	
K	LOWEST POINT OF DUMP*	23.63" (600 mm)	
L	CENTERLINE TO BACK OF ROLLER	6" (152 mm)	
*ASSUMES 3' OVERHANG FROM CENTER OF REAR ROLLER PIN. (BUMPER TYPICALLY 12" FROM CENTER OF ROLLER PIN)			

## NXT52 Specifications - Continued

<b>NXT52</b>	
HOOK HEIGHT:	54" (1,372 mm) OR 61.75" (1,568 mm)
LIFT CAPACITY	54" HH: 52,000 LB (23,587 kg)
	61.75": HH: 52,000 LBS (23,587 kg)
DUMP CAPACITY:	52,000 LB (23,587 kg)
CYCLE TIMES	TILT / DUMP EXTEND: 25 SECONDS
	TILT / DUMP RETRACT: 70 SECONDS
	JIB EXTEND - 11 SECONDS
	JIB RETRACT - 10 SECONDS
	(TIMES BASED ON 24 GPM OF OIL FLOW.)
SHIPPING WEIGHT:	LONG/SHORT VERSION - MANUAL JIB: 6,015 LBS (2,728 kg)
	LONG/SHORT VERSION- HYDRAULIC JIB: 6,120 LBS (2,776 kg)
	(WITHOUT RESERVOIR AND BODY LOCKS.)
BODY LENGTHS:	SHORT VERSION: 16' – 20' (4,877 – 6,096 mm)
	LONG VERSION: 16' – 22' (4,877 – 6,706 mm)
MIN. TRUCK GVWR:	54,000 LB (24,494 kg)
MAXIMUM HYDRAULIC FLOW:	24 GPM (90.8 Lpm)
OPERATING PRESSURE	4,500 PSI (310 Bar)
COMPONENTS	MAIN COMPONENTS ARE MANUFACTURED WITH HIGH-STRENGTH STEEL. GREASABLE BUSHINGS AT ALL PIVOT POINTS. ALL PINS ARE ZINC-PLATED CARBON STEEL AS STANDARD WITH AN OPTION TO UPGRADE TO TYPE 17-4 STAINLESS PINS.

# Serial Tag Location

The serial tag should be located on the right side (passenger side) of the base assembly:



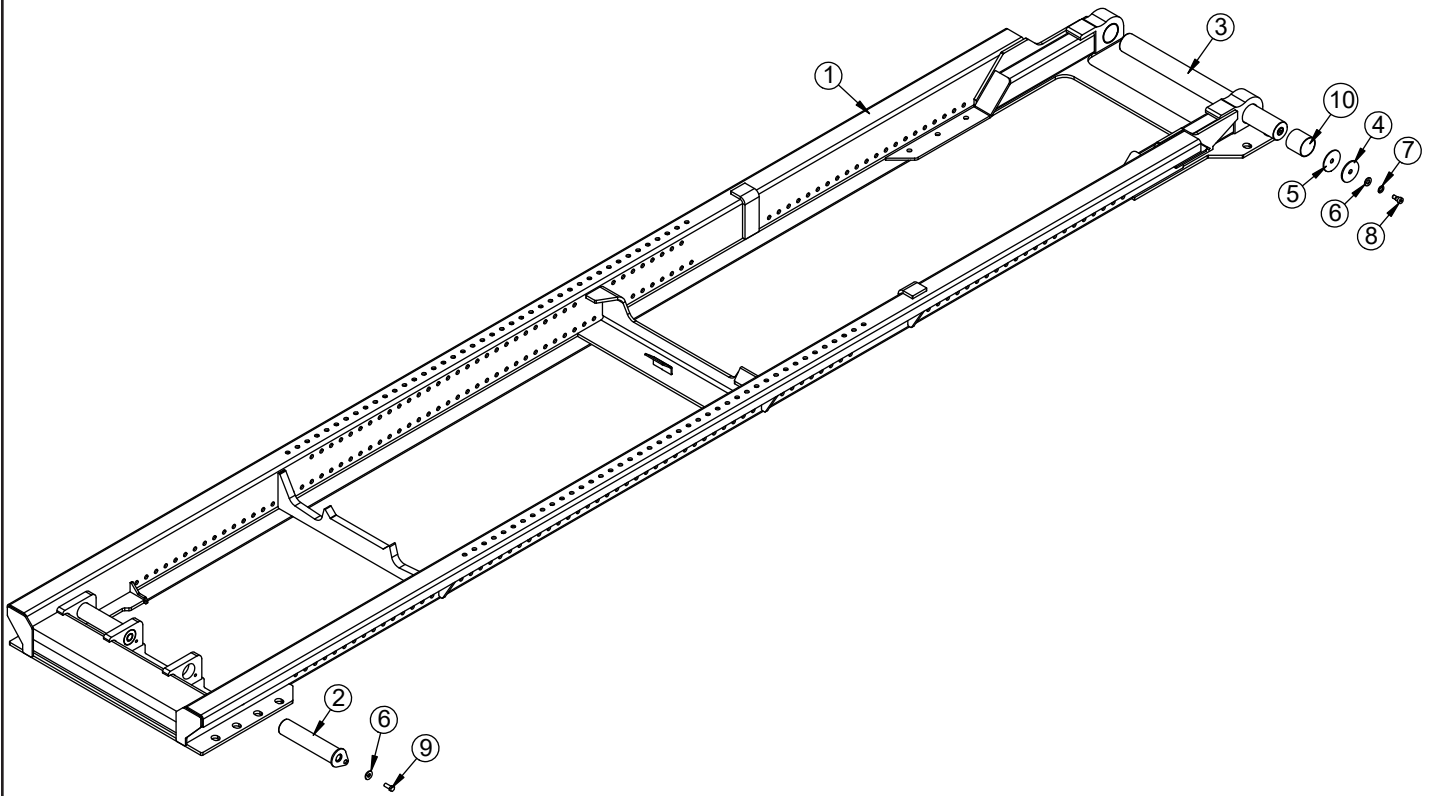


# Chapter 2 - Assembly Drawings NXT52

## Chapter Contents

NXT52 Base Assembly - PN 129228 .....	6
NXT52 Base Assembly - PN 129228 Parts List .....	7
NXT52 Dump Assembly - PN 128940.....	8
NXT52 Dump Assembly - PN 128940 Parts List.....	9
NXT52 Secondary/Dump Latch Asm - PN 129351 .....	10
NXT52 Secondary/Dump Latch Asm - PN 129351 Parts List .....	11
NXT52 Main Cylinder Assembly - PN 129352 .....	12
NXT52 Main Cylinder Assembly - PN 129352 Parts List .....	13
NXT52 Jib Asm 54/62HH, Manual PN 129059 .....	14
NXT52 Jib Asm 54/62HH, Manual PN 129059 Parts List .....	15
NXT52 Jib Asm 54/62HH, Hydraulic PN 129244 .....	16
NXT52 Jib Asm 54/62HH, Hydraulic PN 129244 .....	17
NXT52 Hose Track Assembly PN 130154 .....	18
NXT52 Hose Track Assembly PN 130154 Parts List .....	19
NXT52 Cylinder Assembly PN 127967 .....	20
NXT52 Cyl Asm 4.00 x 48.00 - PN 127968.....	22
NXT52 Cyl Asm 4.00 x 48.00 - PN 127968 Parts List.....	23

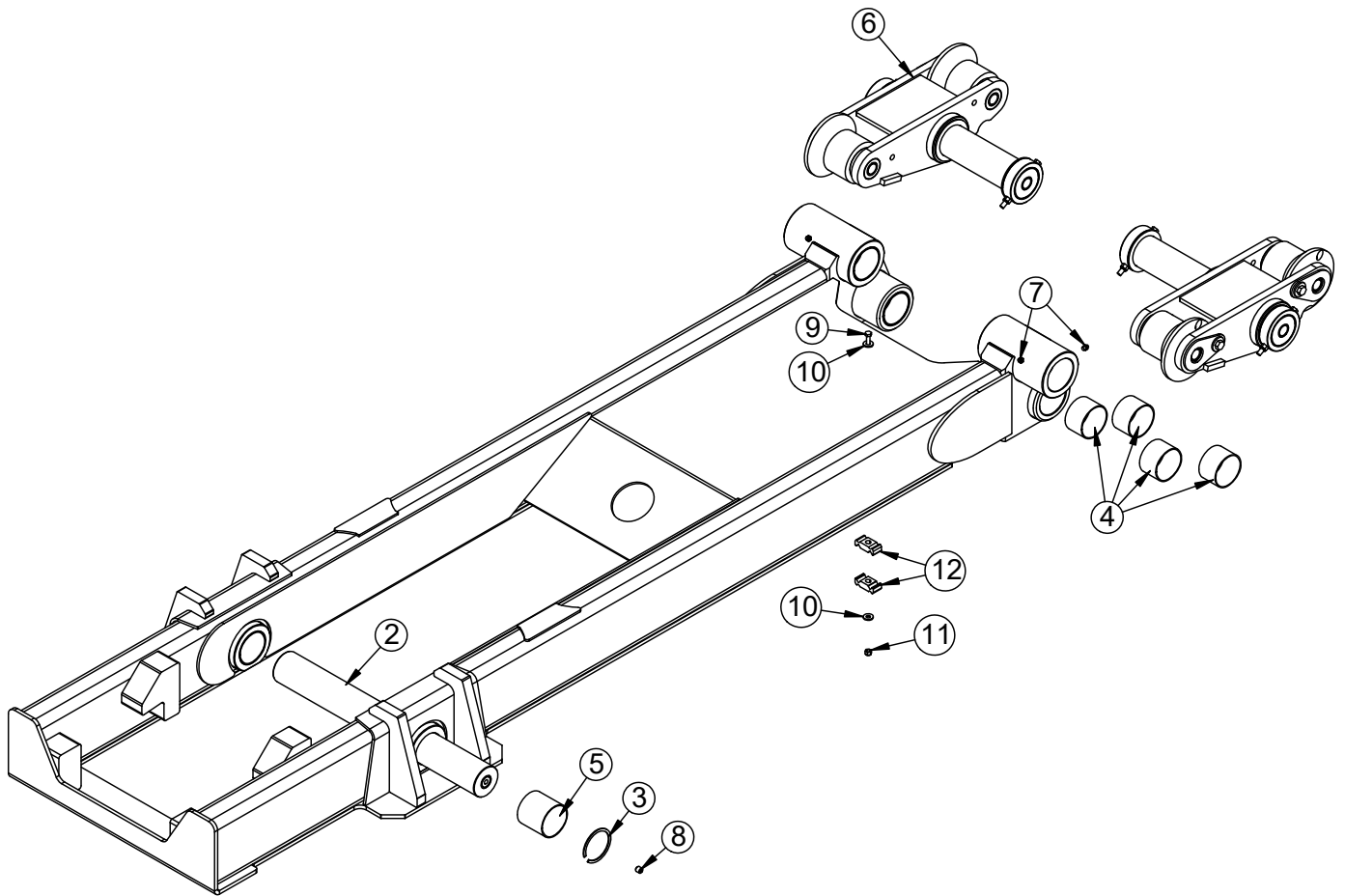
# NXT52 Base Assembly - PN 129228



# NXT52 Base Assembly - PN 129228 Parts List

PN 129228			
ITEM	PART	DESCRIPTION	QTY
1	129229	BASE NXT52	1
2	129433CR	PIN TEAR DROP 2.50X11.38 ZC	2
3	129370CR	PIN 3.00X32.63 D&T ZC	1
4	8455	PIN CAP 0.69X3.50X0.19 YZ	2
5	12921	THRUST WASHER 0.64X3.50X0.125	2
6	0352	WASHER 0.50 USS FLAT	4
7	12711	THRUST WASHER 0.63 DIA	2
8	12673	BOLT SHOULDER 0.63X0.50 0.50-13X0.75	2
9	0498	CAP SCR 0.50-13X1.25 HHGR5	2
10	2227	BUSHING BPC48DXR48 3.00X3.00	2
INITIAL RELEASE			

# NXT52 Dump Assembly - PN 128940

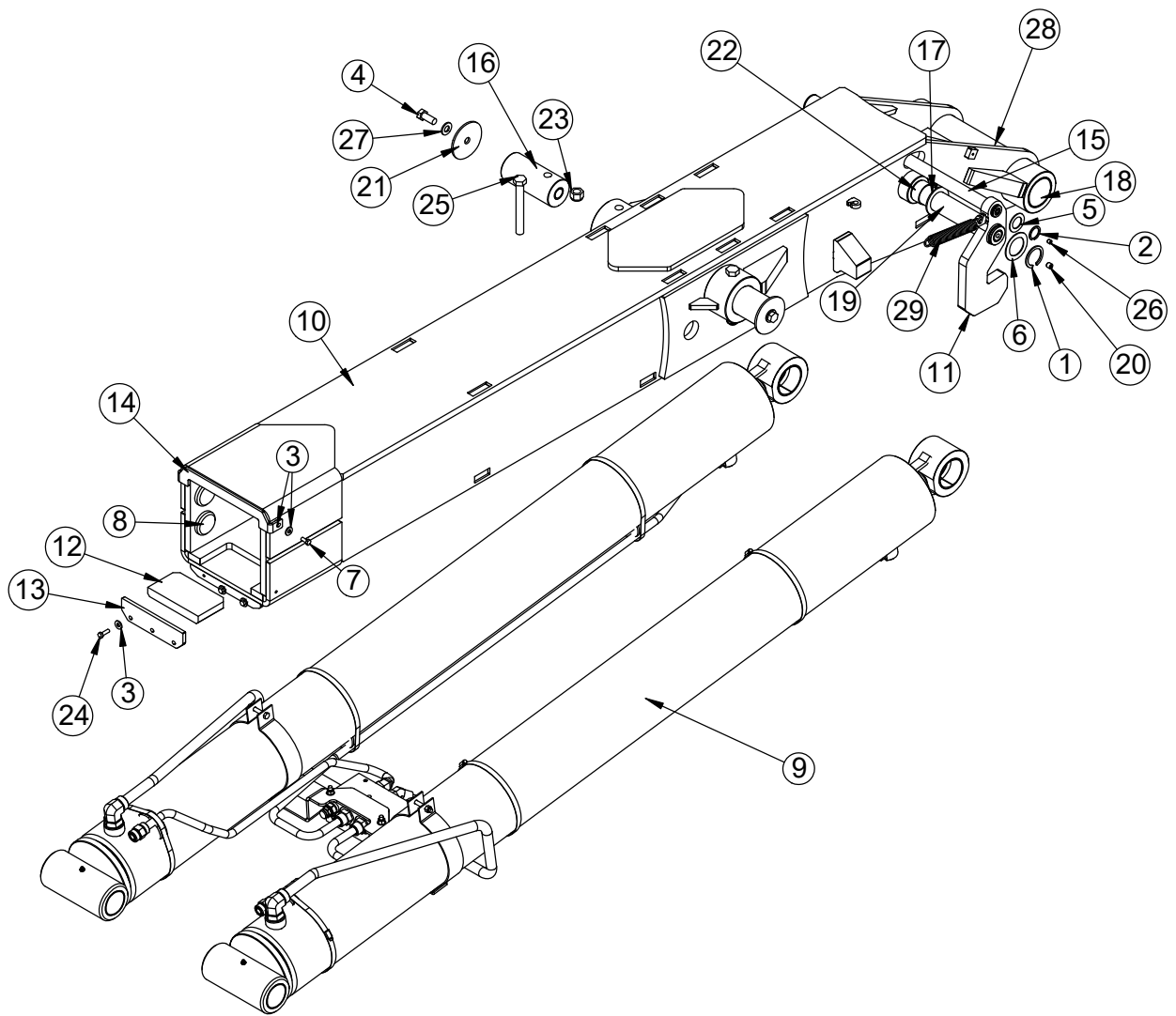


# NXT52 Dump Assembly - PN 128940 Parts List

PN 128940

ITEM	PART	DESCRIPTION	QTY
1	128941	DUMP NXT52	1
2	129439CR	PIN 3.00X24.88 D&T ZC	1
3	2200	SNAP RING INSIDE 3.00 3000-X300	2
4	0865	BUSHING BPC48DXR32 3.00X2.00	8
5	2227	BUSHING BPC48DXR48 3.00X3.00	2
6	129436	ROLLER ASM NXT52	1
7	C1592	ZERK 1/8 NPT STRAIGHT	4
8	58052	SET SCREW 0.50-13X0.50 W/ RED PATCH	1
9	C0929	CAP SCR 0.31-18X2.75 HHGR5	1
10	0343	WASHER 0.31 USS FLAT	2
11	0342	NUT 0.31-18 HHGR5 NYLOC	1
12	8622	CLAMP HOSE/TUBE AG-2	2
REV A			

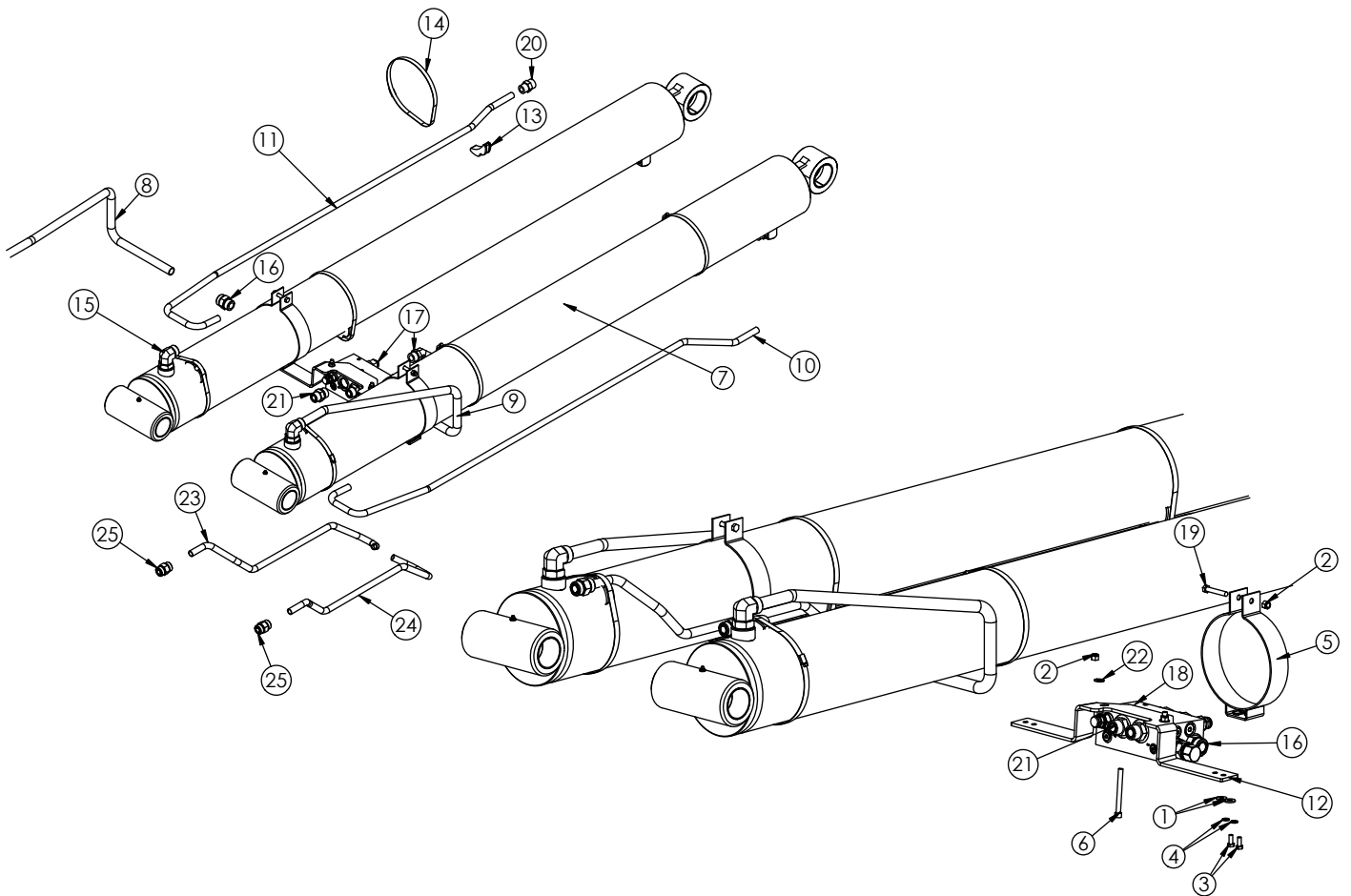
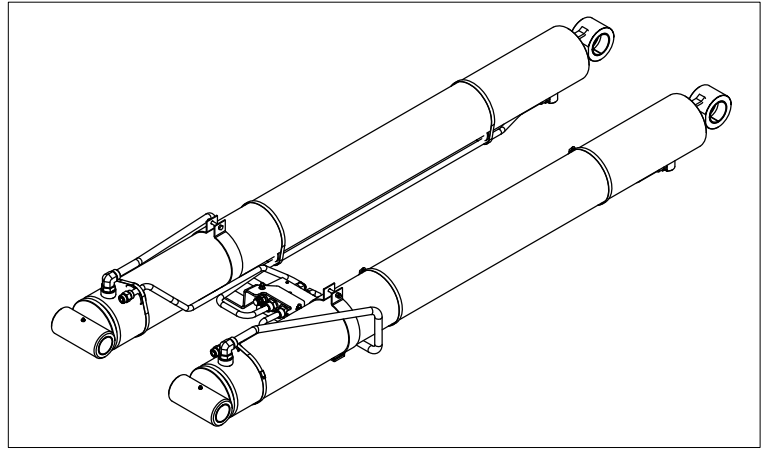
# NXT52 Secondary/Dump Latch Asm - PN 129351



# NXT52 Secondary/Dump Latch Asm - PN 129351 Parts

PN 129351			
ITEM	PART	DESCRIPTION	QTY
1	0108	SNAP RING 2.00 7200-200	2
2	0171	SNAP RING 1.25 ID 7200-125	2
3	0343	WASHER 0.31 USS FLAT	7
4	0356	CAP SCR 0.63-11X1.50 HHGR8	2
5	0374	MACHY WASHER 1.25ID 14GA	2
6	0377	MACHY WASHER 2.00ID 14GA	2
7	0420	CAP SCR 0.31-18X0.75 HHGR5	2
8	114019	WEAR PAD 0.50X2.50 RND NYLATRON	4
9	129352	CYLINDER ASM NXT52	1
10	129353	SECONDARY NXT52	1
11	129354	LATCH DUMP NXT52	2
12	129481	WEAR PAD 1.00IN NXT52 SECONDARY	2
13	129482	PLATE WEAR PAD COVER SEC NXT52	1
14	129483	PLATE WEAR PAD COVER NXT52	1
15	129484	PIN 1.25X16.63 SR ZP	1
16	129485CR	PIN 3.00X6.56 D&T W/HOLE ZP	2
17	1546	THRUST WASHER 2.01DIA UHMW .12THK	2
18	2227	BUSHING BPC48DXR48 3.00X3.00	2
19	24610CR	PIN 2.00X16.88 SR/D&T ZC	1
20	58052	SET SCREW 0.50-13X0.50 W/ RED PATCH	2
21	8597	PIN CAP 0.69X4.00X0.19 YZ	2
22	8819	BUSHING BPC32DXR16 2.00X1.00	2
23	C0538	NUT 0.75-10 HHGR8 NYLOC	2
24	C0922	CAP SCR 0.31-18X1.00 HHGR5	3
25	C1029	CAP SCR 0.75-10X6.00 HHGR8	2
26	C3397	SET SCREW 0.38-16X0.38 W/ RED PATCH	1
27	C5902	WASHER 0.63 SAE FLAT YELLOW GR8	2
28	C1592	ZERK 1/8 NPT STRAIGHT	3
29	54817	SPRING 1.00ODX0.125X4.50	2
REV. INITIAL RELEASE			

# NXT52 Main Cylinder Assembly - PN 129352



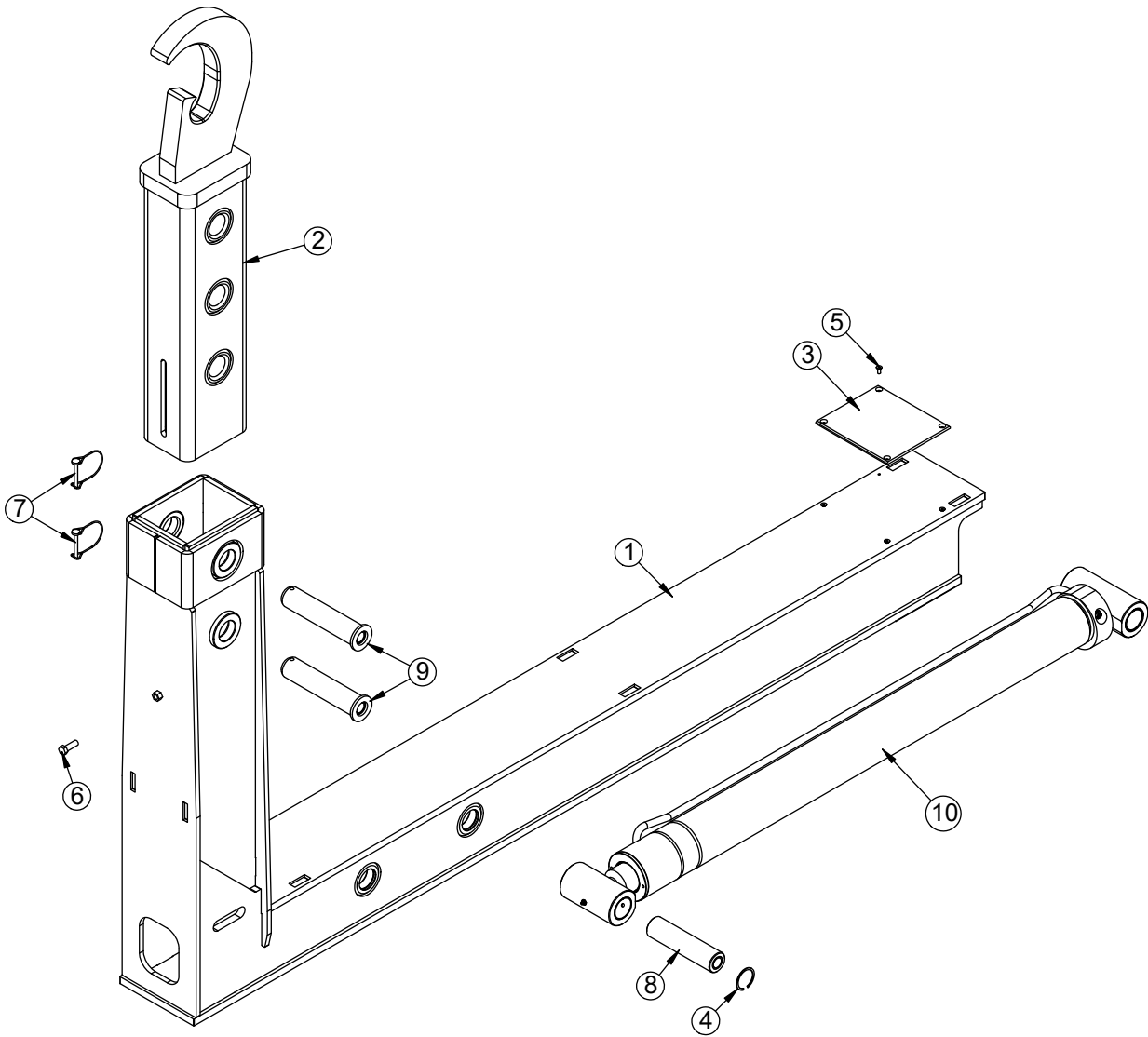


# NXT52 Main Cylinder Assembly - PN 129352 Parts List

PN 129352			
ITEM	PART	DESCRIPTION	QTY
1	343	WASHER 0.31 USS FLAT	4
2	347	NUT 0.38-16 HHGR5 NYLOC	4
3	420	CAP SCR 0.31-18X0.75 HHGR5	4
4	522	WASHER 0.31 LOCK	4
5	105849	WLDMT BRKT CYL MOUNT SHUTTLE65	2
6	11898	CAP SCR 0.38-16X3.75 SH	2
7	127963	CYLINDER 7.00X82.00 REGEN	2
8	129550	TUBE ASM 1.00 NXT52 CS ZC	1
9	129551	TUBE ASM 1.00 NXT52 SS ZC	1
10	129552	TUBE ASM 0.75 NXT52 SS ZC	1
11	129553	TUBE ASM 0.75 NXT52 CS ZC	1
12	129554	BRKT CYL CROSSMEMBER NXT52	1
13	18701	CLAMP PORT TUBE ZR518	6
14	19370	HOSE CLAMP 5.63-8.50 5416K39	6
15	59959	FTG 16-16 MFS-MAORB 90	2
16	63180	FTG 16-16 MFS-MORB STRAIGHT	2
17	7351	FTG ST TH ELBOW 45 DEG 12V5OLO	2
18	74788	VALVE REGEN SLIDER50	1
19	C0946	CAP SCR 0.38-16X2.25 HHGR5	2
20	C2142	FTG 12-12 MFS-MORB STRAIGHT	2
21	C2269	FTG 12-16 MFS-MORB STRAIGHT	2
22	C6353	WASHER 0.38 SAE FLAT YELLOW GR8	2
23	132686	TUBE ASM 0.75 NXT52 REGEN VALVE CS ZC	1
24	132687	TUBE ASM 0.75 NXT52 REGEN VALVE SS ZC	1
25	C4864	FTG 12-12 MFS-MFS STRAIGHT	2
REV. A			

**NOTE:**  
**SEAL KIT PN: 132900**

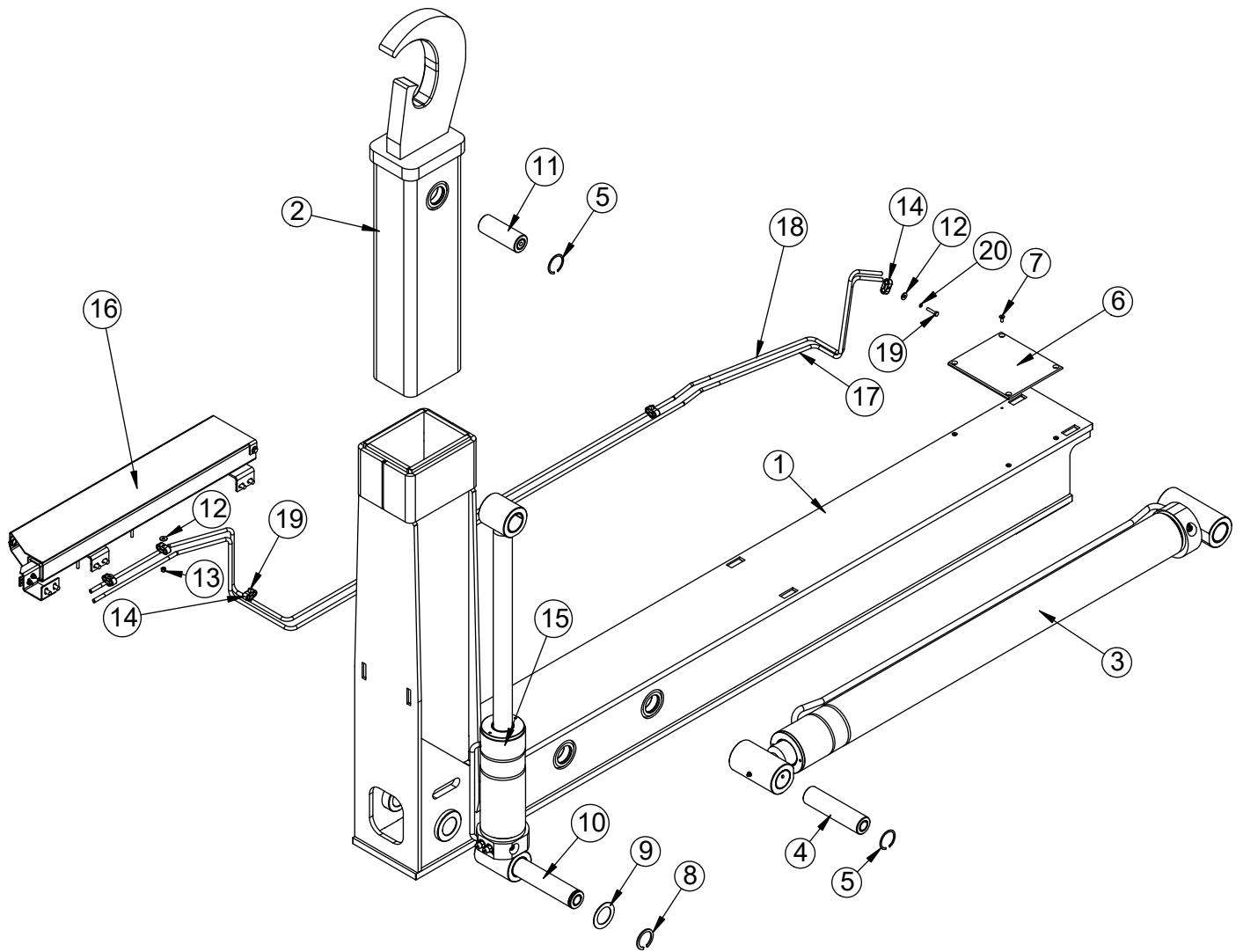
# NXT52 Jib Asm 54/62HH, Manual PN 129059



# NXT52 Jib Asm 54/62HH, Manual PN 129059 Parts List

PN 129059			
ITEM	PART	DESCRIPTION	QTY
1	129060	JIB NXT 52 MANUAL	1
2	129238	JIB TOP NXT52 MANUAL 54/62HH	1
3	129243	WEAR PAD JIB NXT52 0.25IN	2
4	2257	SNAP RING INSIDE 2.00	2
5	25741	CAP SCR 0.25-20X0.63 FSH SS	8
6	10548	CAP SCR 0.50-13X1.50 HHGR8	1
7	45216	PIN 0.31X2.75 WIRE LOCK	2
8	131913CR	PIN 2.00X8.00 D&T ZC	1
9	129241CR	PIN WLDMT 2.00X9.19 ZC	2
10	127968	CYLINDER ASM 4.00X48.00 NXT52	1
REV. A			

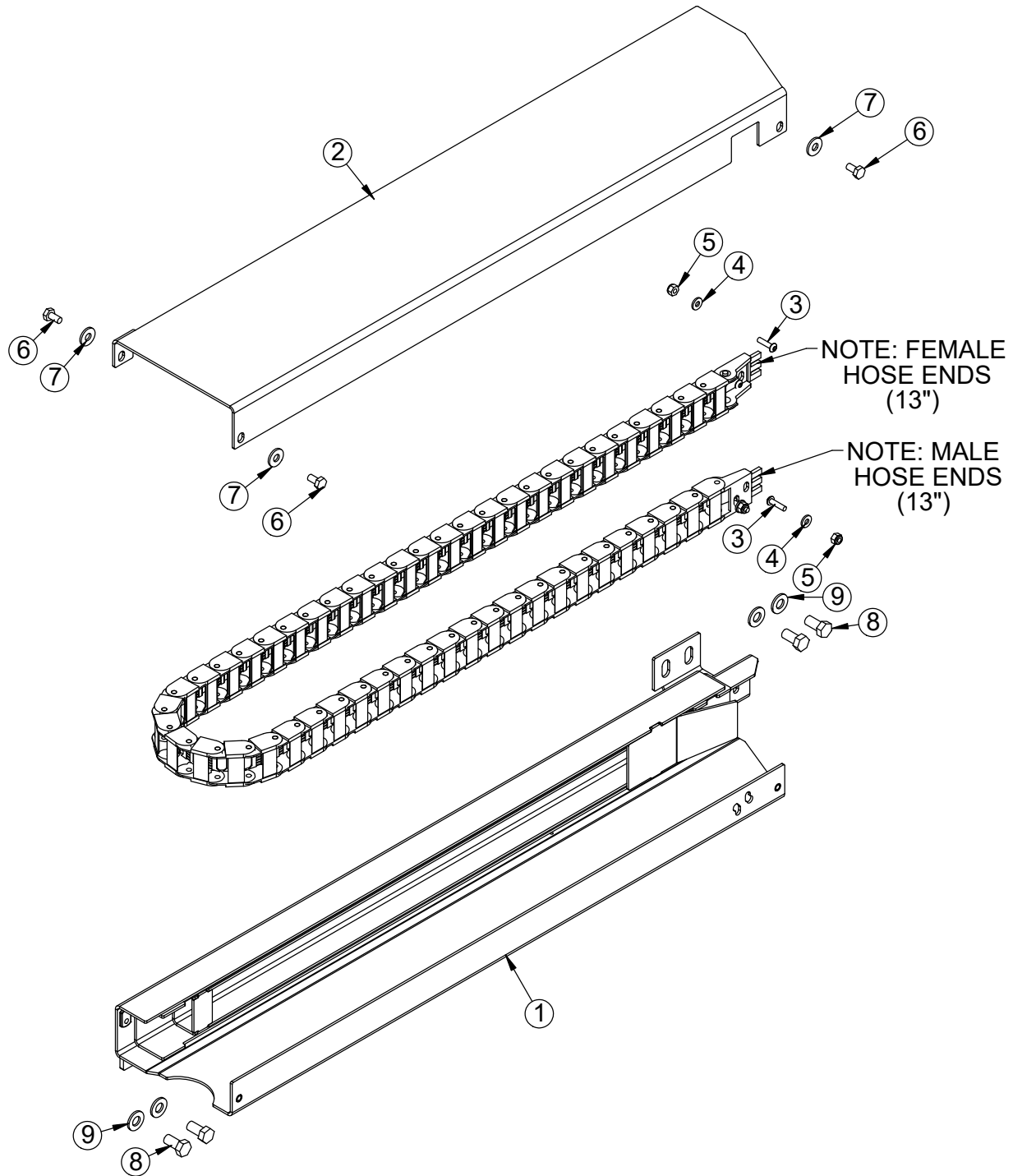
# NXT52 Jib Asm 54/62HH, Hydraulic PN 129244



# NXT52 Jib Asm 54/62HH, Hydraulic PN 129244

PN 129244			
ITEM	PART	DESCRIPTION	QTY
1	129245	JIB NXT 52 HYD	1
2	129246	JIB TOP NXT52 54/62HH HYD	1
3	127968	CYLINDER ASM 4.00X48.00 NXT52	1
4	131913CR	PIN 2.00X8.00 D&T ZC	1
5	2257	SNAP RING INSIDE 2.00	4
6	129243	WEAR PAD JIB NXT52 0.25IN	2
7	25741	CAP SCR 0.25-20X0.63 FSHH SS	8
8	0108	SNAP RING 2.00 7200-200	2
9	0377	MACHY WASHER 2.00ID 14GA	2
10	0862CR	PIN 2.00X10.50	1
11	129349CR	PIN 2.00X5.38 ZC	1
12	0340	WASHER 0.25 USS FLAT	5
13	0333	NUT 0.25-20 HHGR5 NYLOC	2
14	96567	CLAMP 0.38 PORT TUBE TWIN - STAUFF LNGF	5
15	127967	CYLINDER ASM 4.00X7.75 NXT52	1
16	130154	HOSE TRACK ASM NXT52	1
17	130146	TUBE ASM 0.38 JIB HH CS NXT52	1
18	130147	TUBE ASM 0.38 JIB HH SS NXT52	1
19	0437	CAP SCR 0.25-20X1.25 HHGR5	3
20	0521	WASHER 0.25 LOCK	3
REV. B			

# NXT52 Hose Track Assembly PN 130154



# NXT52 Hose Track Assembly PN 130154 Parts List

## PN 130154

ITEM	PART	DESCRIPTION	QTY
1	130155	HOSE TRACK WLDMT NXT52	1
2	130236	PLATE COVER HOSE TRACK NXT52	1
3	D0894	CAP SCR #10-24X0.75 BTNHD SS	4
4	D0178	WASHER #10 SAE FLAT	4
5	C4956	NUT #10-24 HH NYLOC SS	4
6	0478	CAP SCR 0.25-20X0.50 HHGR5	3
7	0340	WASHER 0.25 USS FLAT	3
8	9843	CAP SCR 0.38-16X0.75 HHGR8	6
9	C6353	WASHER 0.38 SAE FLAT YELLOW GR8	6

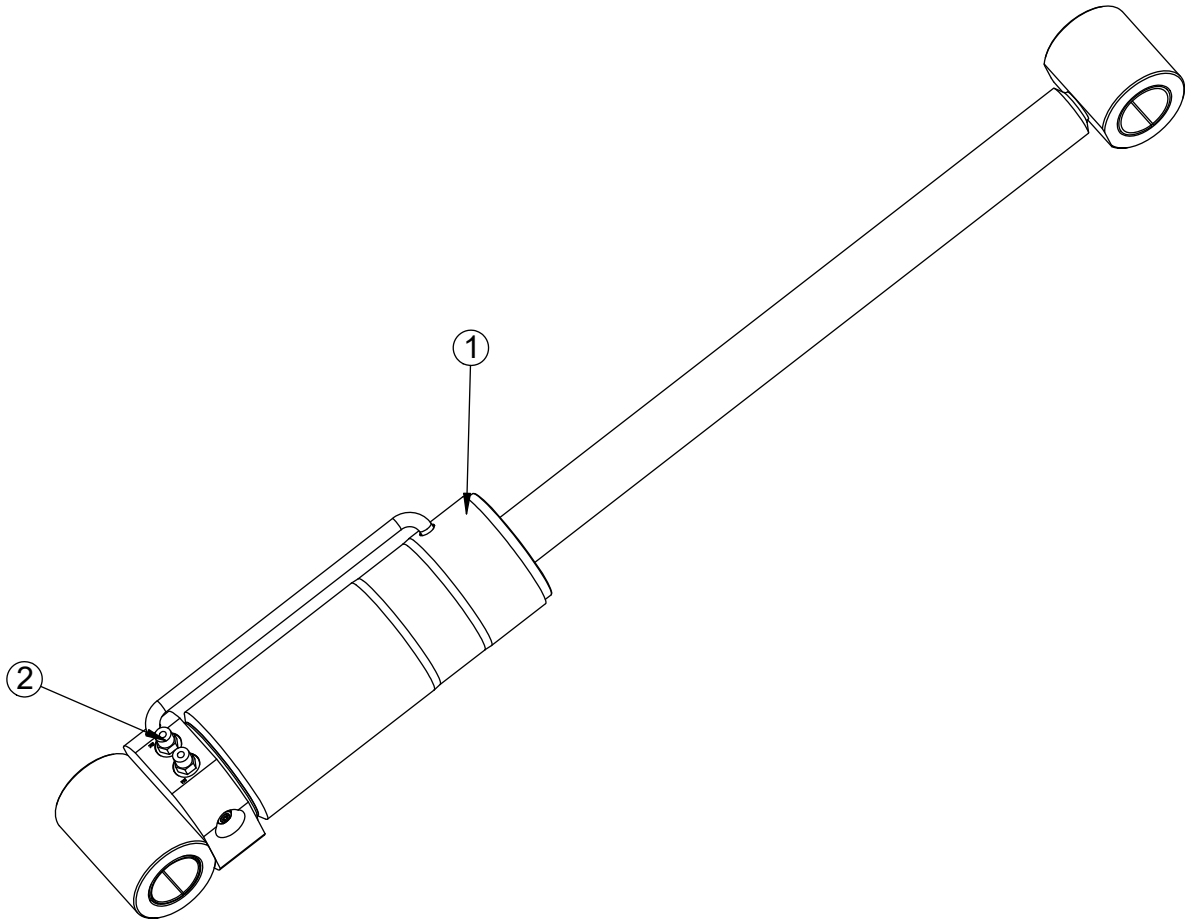
REV. B

**NOTES:**

**HOSE TRACK AND HOSE ASSEMBLY INCLUDED IN HOSE KIT: 132321.**

**WHEN PLACING HOSES INTO THE HOSE TRACK, LEAVE INDICATED LENGTH OF HOSE BEYOND EACH END.**

# NXT52 Cylinder Assembly PN 127967



## PN 127967

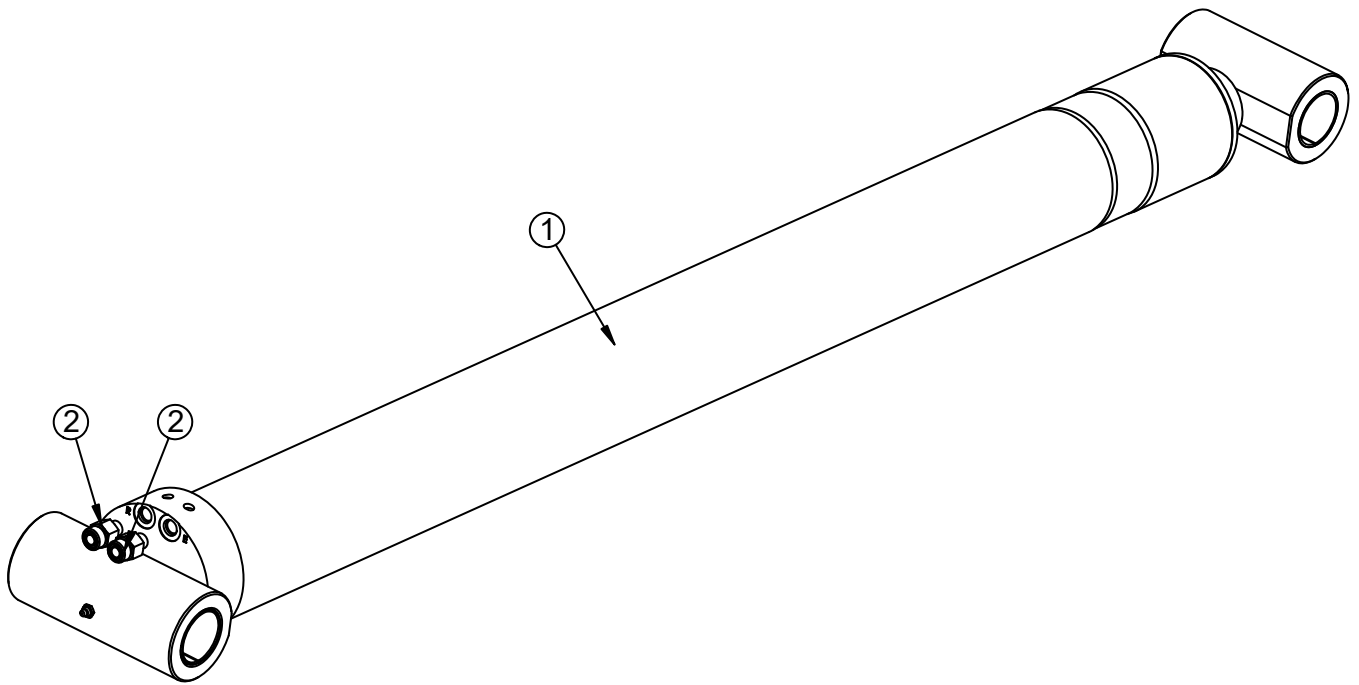
ITEM	PART	DESCRIPTION	QTY
1	127964	CYLINDER 4.00X7.75	1
2	0279	FTG 6-6 MFS-MORB STRAIGHT	2
REV. INITIAL RELEASE			

**NOTES:**  
**SEAL KIT: 32565**



**This page left intentionally blank.**

# NXT52 Cyl Asm 4.00 x 48.00 - PN 127968



# NXT52 Cyl Asm 4.00 x 48.00 - PN 127968 Parts List

## PN 127968

ITEM	PART	DESCRIPTION	QTY
1	127965	CYLINDER 4.00X48.00 NXT52	1
2	D1290	FTG 8-6 MFS-MORB STRAIGHT	2

INITIAL RELEASE

**NOTE:**

SEAL KIT PART NO:132901 - BOBALEE.

C-BALANCE VALVE PART NO: C6184 (X2)

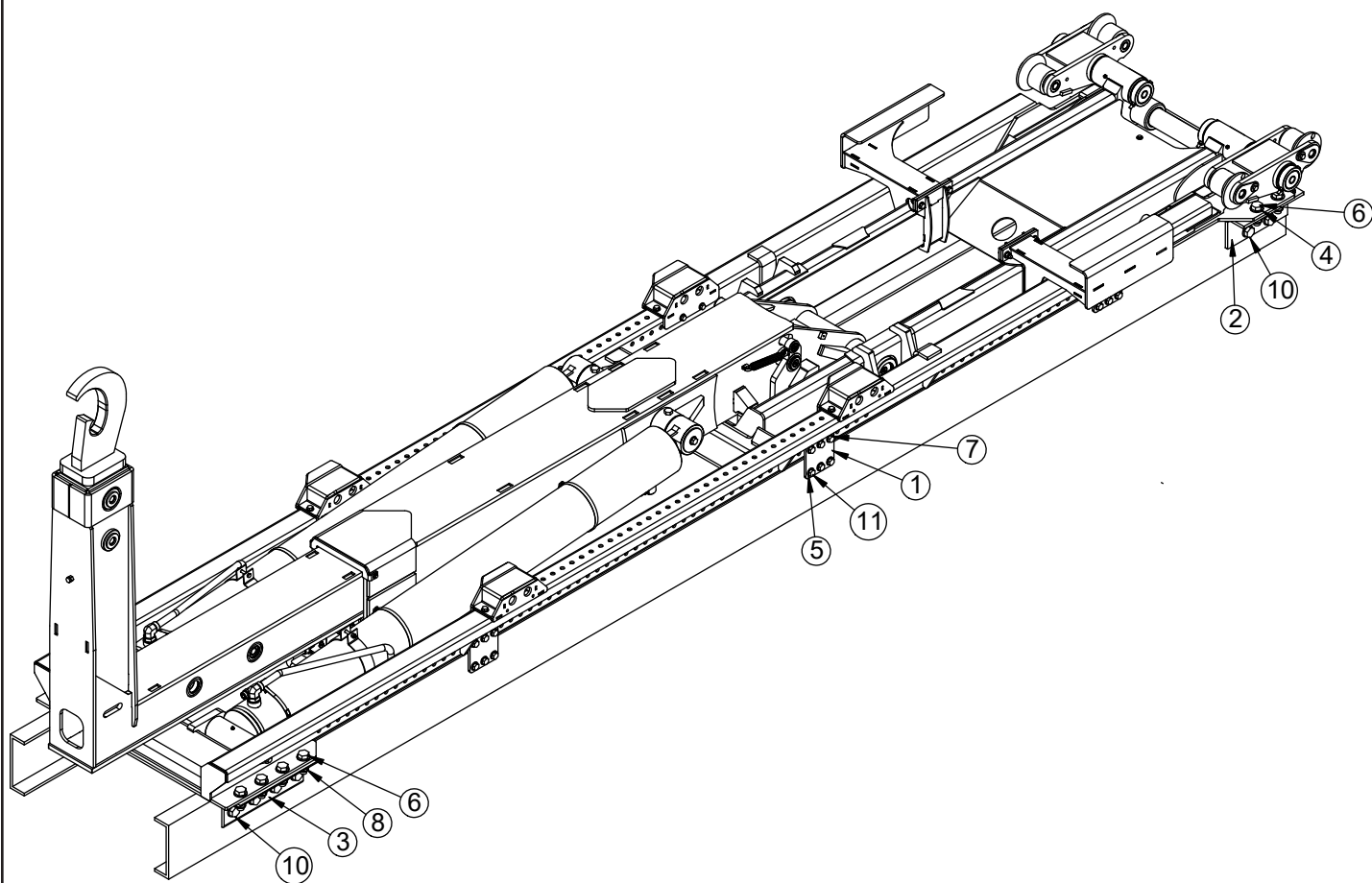
**This page left intentionally blank.**

# Chapter 3 - Auxillary Assemblies NXT52

## Chapter Contents

Mounting Kit - PN 129440 .....	26
Mounting Kit - PN 129440 Parts List .....	27
Reservoir Assembly - PN 130144 .....	28
Reservoir Assembly - PN 130144 Parts List .....	29
Valve Bank - PN 129905 .....	30
Valve Bank - PN 129905 Parts List .....	31
Valve Bank - PN 132682 .....	32
3-Section Valve Bank Assembly- PN 132329 .....	34
3-Section Valve Bank Assembly- PN 132329 Parts List .....	35
3-Sect Valve Bank Asm w Port Relief - PN 132328 .....	36
3-Sect Valve Bank Asm w Port Relief - PN 132328 Parts .....	37
Hose Kit - PN 129649 .....	38
3-Section Hose Kit - PN 132321 .....	39
Controller Assembly PN 131283 .....	40
Controller Assembly PN 131283 Parts List .....	41
Controller Asm, 3-Sect w VB Asm PN 131705 .....	42
Controller Asm, 3-Sect w VB Asm PN 131705 Parts List .....	43
Air Schematic Control Tower Asm PN 132688 .....	44
Air Schematic Control Tower Asm PN 132688 Parts List .....	45
Electrical Schematic PN 132702 .....	46
Electrical Schematic PN 132702 Parts List .....	47
Face Seal / O-Ring Size Chart .....	48
Torque Data Chart .....	49
Torquing Information & Warnings .....	49
Raised Hoist Indicator Light Kit - PN 127153 .....	50
Raised Hoist Indicator Light Kit - PN 127153 Parts List .....	51

# Mounting Kit - PN 129440

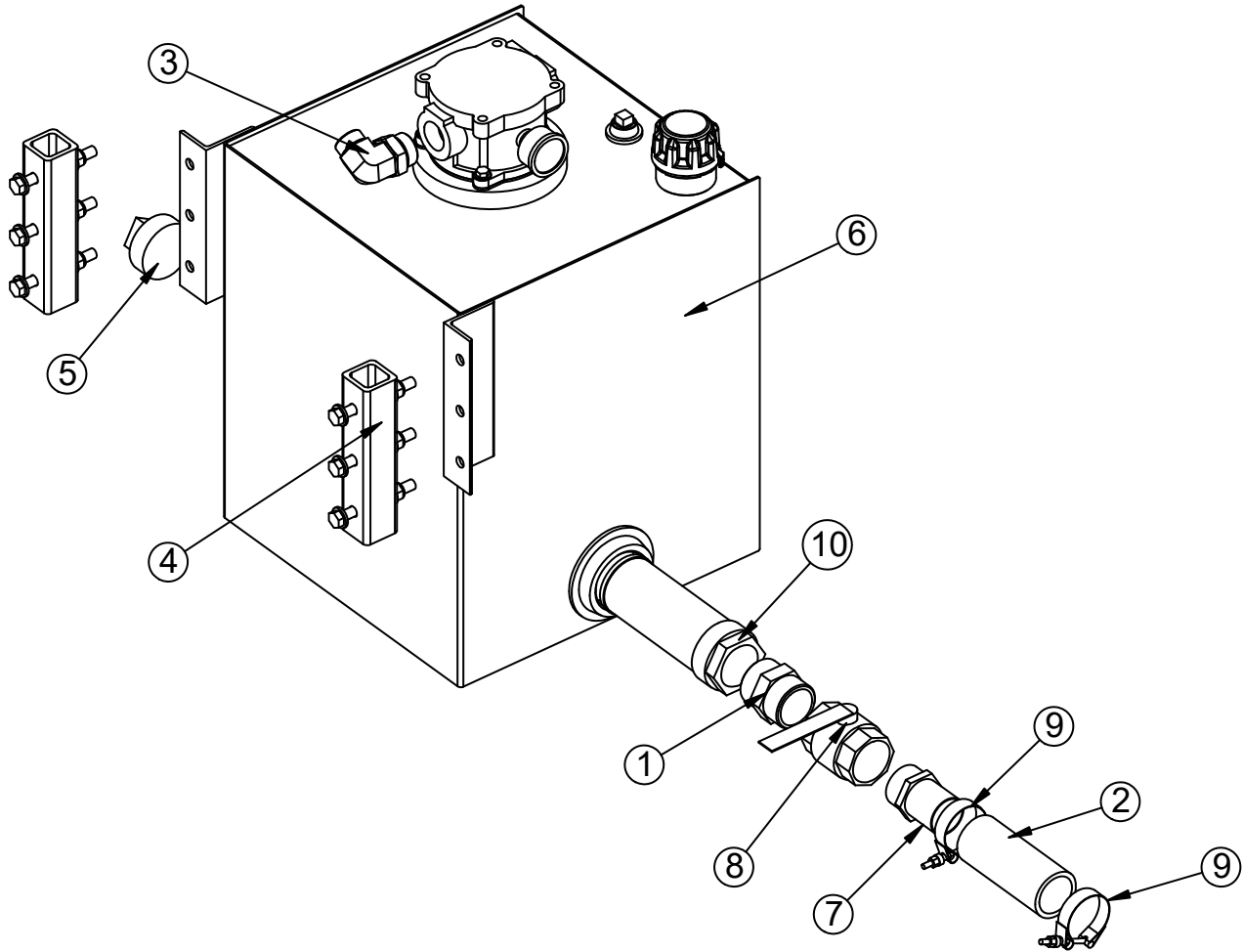


# Mounting Kit - PN 129440 Parts List

PN 129440			
ITEM	PART	DESCRIPTION	QTY
1	129435	PLATE 0.50X6.25X6.00 HOLES	6
2	132326	ANGLE FORMED 4.00X6.00X0.50X12.88 SLOTS	2
3	129502	ANGLE 4.00X6.00X.50WX17.00 SLOTS	2
4	6538	WASHER 1.00 SAE FLAT YELLOW GR8	48
5	C5902	WASHER 0.63 SAE FLAT YELLOW GR8	72
6	5199	CAP SCR 1.00-8X3.00 HHGR8	12
7	84053	CAP SCR 0.63-11X2.25 HHGR8	18
8	6294	NUT 1.00-8 HHGR8 NYLOC	24
9	24868	NUT 0.63-11 HHGR8 NYLOC	36
10	12169	CAP SCR 1.00-8X3.50 HHGR8	12
11	50375	CAP SCR 0.63-11X2.75 HHGR8	18
REV. B			

ITEMS NOT SHOWN		
PART	DESCRIPTION	QTY
130468	PLATE 0.25X2.00X6.00 HOLES	6
130469	PLATE 12GAX2.00X6.00 HOLES	6

# Reservoir Assembly - PN 130144





# Reservoir Assembly - PN 130144 Parts List

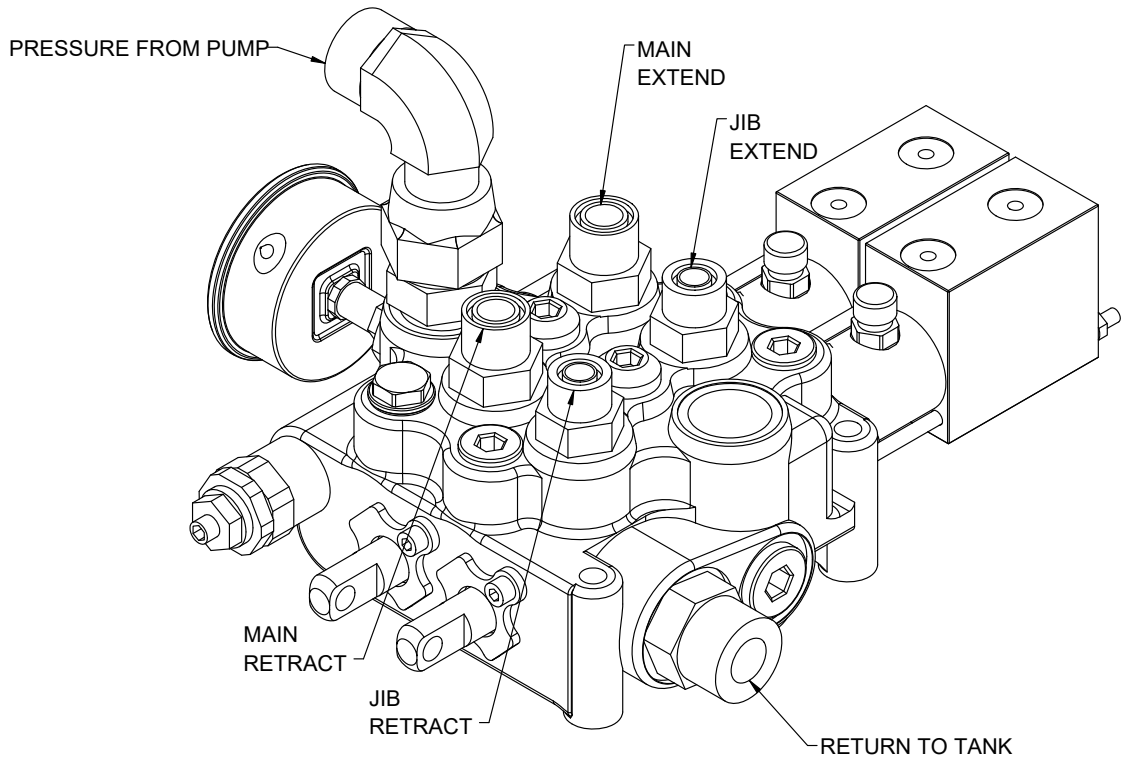
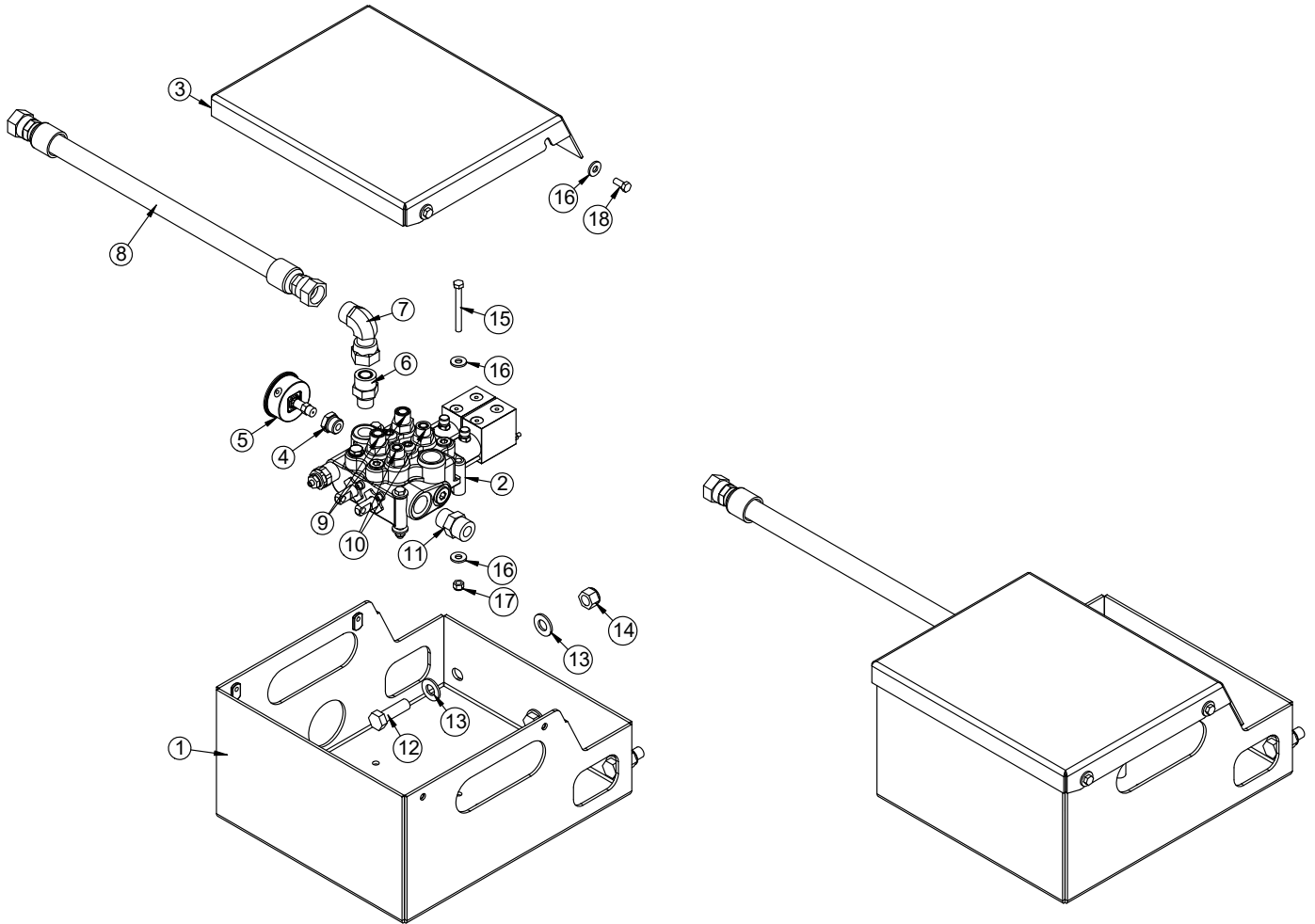
## PN 130144

ITEM	PART	DESCRIPTION	QTY
1	7353	FTG 32-32 MP-MP HEX NIPPLE STRAIGHT	1
2	17766	HOSE SUCT 2.00 10FT	1
3	60395	FTG 16-20 MFS-MAORB 90	1
4	83959	MNT KIT RSRVR 25G	1
5	5745	PLUG 3.00 NPT SQ HD CS BLK	1
6	130143	RSRVR ASM 25GAL SQUARE W/ TANK TOP FILTER	1
7	C4730	FTG 32-32 MP-HB STRAIGHT	1
8	C4750	VALVE BALL 2.00	1
9	C4819	HOSE CLAMP 2.00	2
10	C6327	FILTER STRAINER 35GAL TF-2030	1
INITIAL RELEASE			

## ITEMS NOT SHOWN

PART	DESCRIPTION	QTY
129652	HOSE 0.75 (300PSI) - 16FFSS SHORT-12FFSS 90 SHORT-48.00CL	
42971	DECAL OIL FILTER CHANGE X 1	1

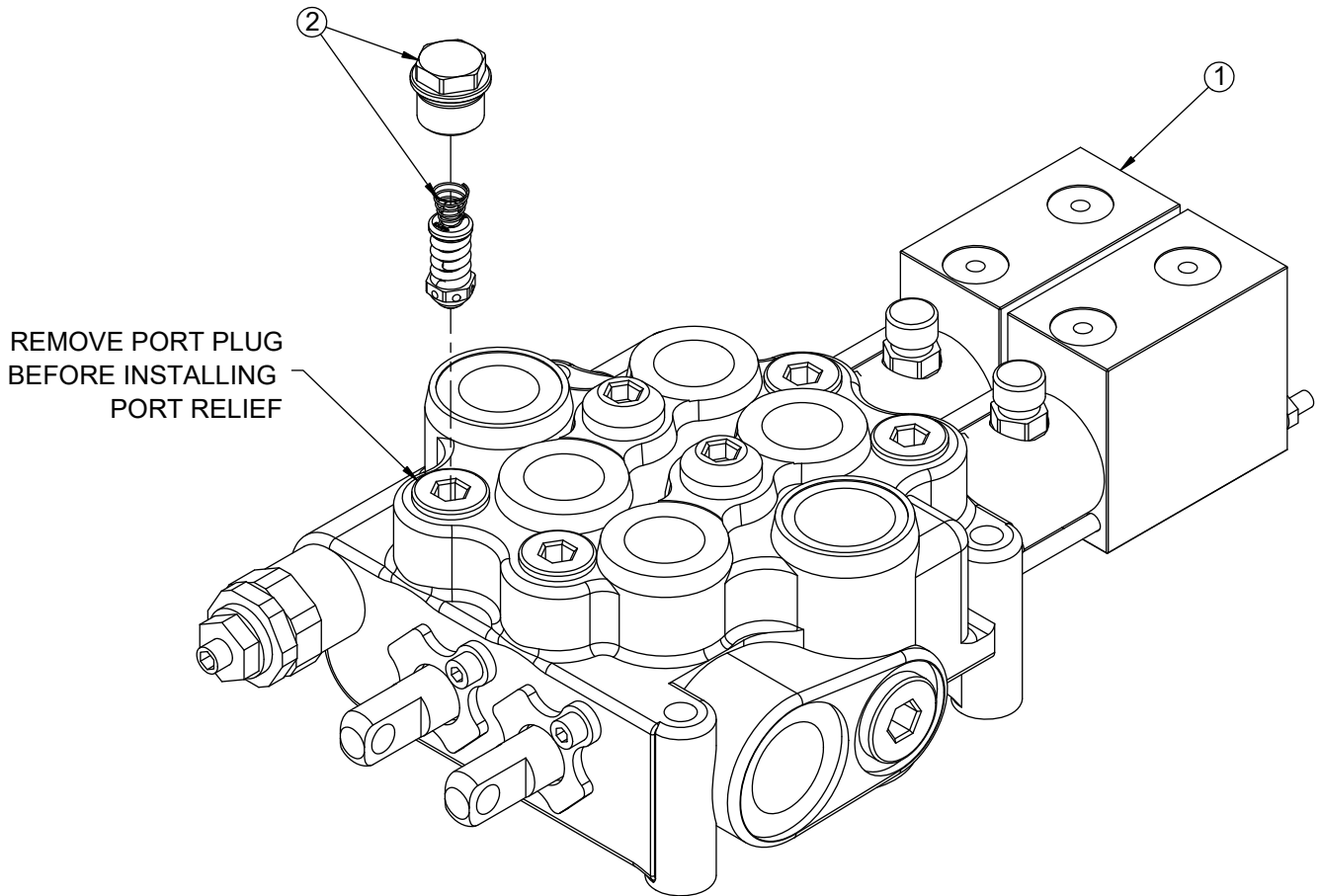
# Valve Bank - PN 129905



# Valve Bank - PN 129905 Parts List

PN 129905			
ITEM	PART	DESCRIPTION	QTY
1	129906	WLDMT VB MNT NXT52	1
2	132682	VB 2-SECT VDM8 PABS4-PABS4-4200MRV-LCHA-ZNCT W/PORT RELIEF	1
3	129908	COVER VB MNT NXT52	1
4	55833	FTG 10-4 MORB-FORB STRAIGHT REDUCER	1
5	39780	GAUGE OIL LF 2.5 0-6000 CBM SAE	1
6	D1435	FTG 12-10 MFS-MORB STRAIGHT	1
7	C4903	FTG 12-12 MFS-FFSS 90	1
8	27119	HOSE 0.75(5000PSI)-12FFSS SHORT-12FFSS SHORT-120CL	1
9	16152	FTG 10-10 MFS-MORB STRAIGHT	2
10	C2252	FTG 8-10 MFS-MORB STRAIGHT	2
11	C2142	FTG 12-12 MFS-MORB STRAIGHT	1
12	C1025	CAP SCR 0.63-11X2.00 HHGR8	3
13	C5902	WASHER 0.63 SAE FLAT YELLOW GR8	6
14	24868	NUT 0.63-11 HHGR8 NYLOC	3
15	C0930	CAP SCR 0.31-18X3.00 HHGR5	3
16	0343	WASHER 0.31 USS FLAT	10
17	0342	NUT 0.31-18 HHGR5 NYLOC	3
18	0420	CAP SCR 0.31-18X0.75 HHGR5	4
REV. A			

# Valve Bank - PN 132682

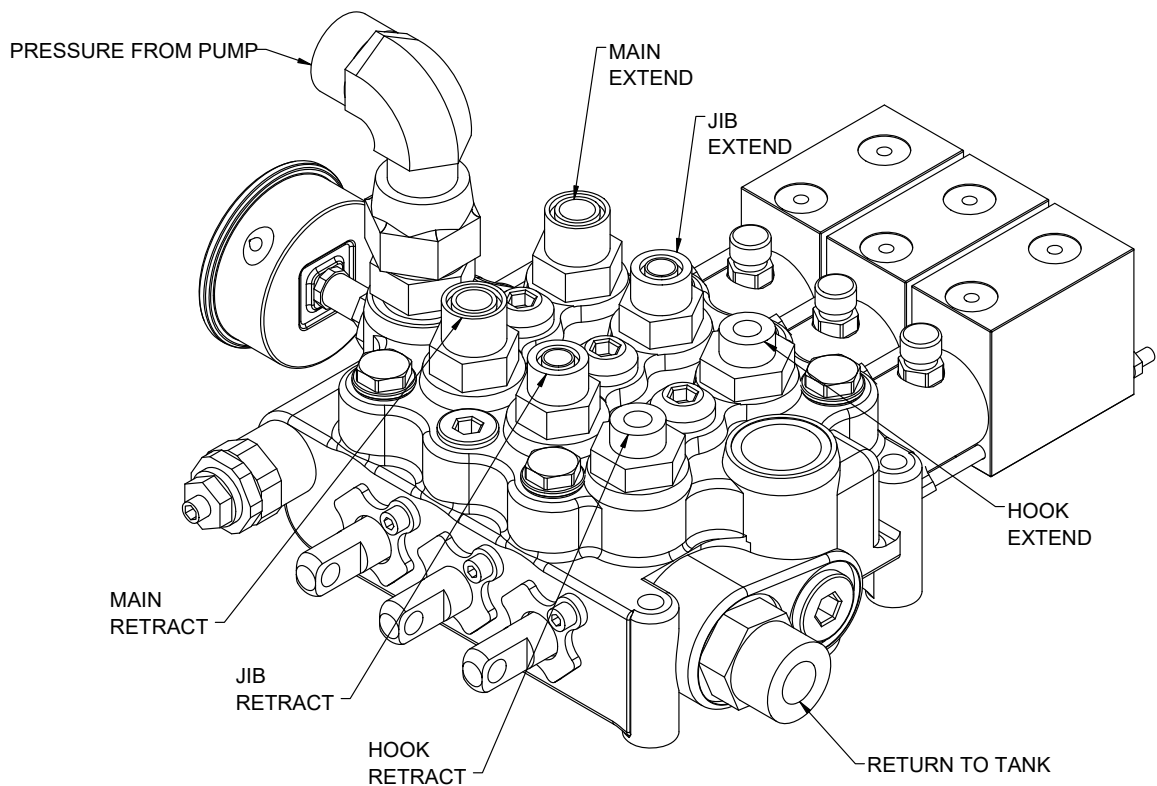
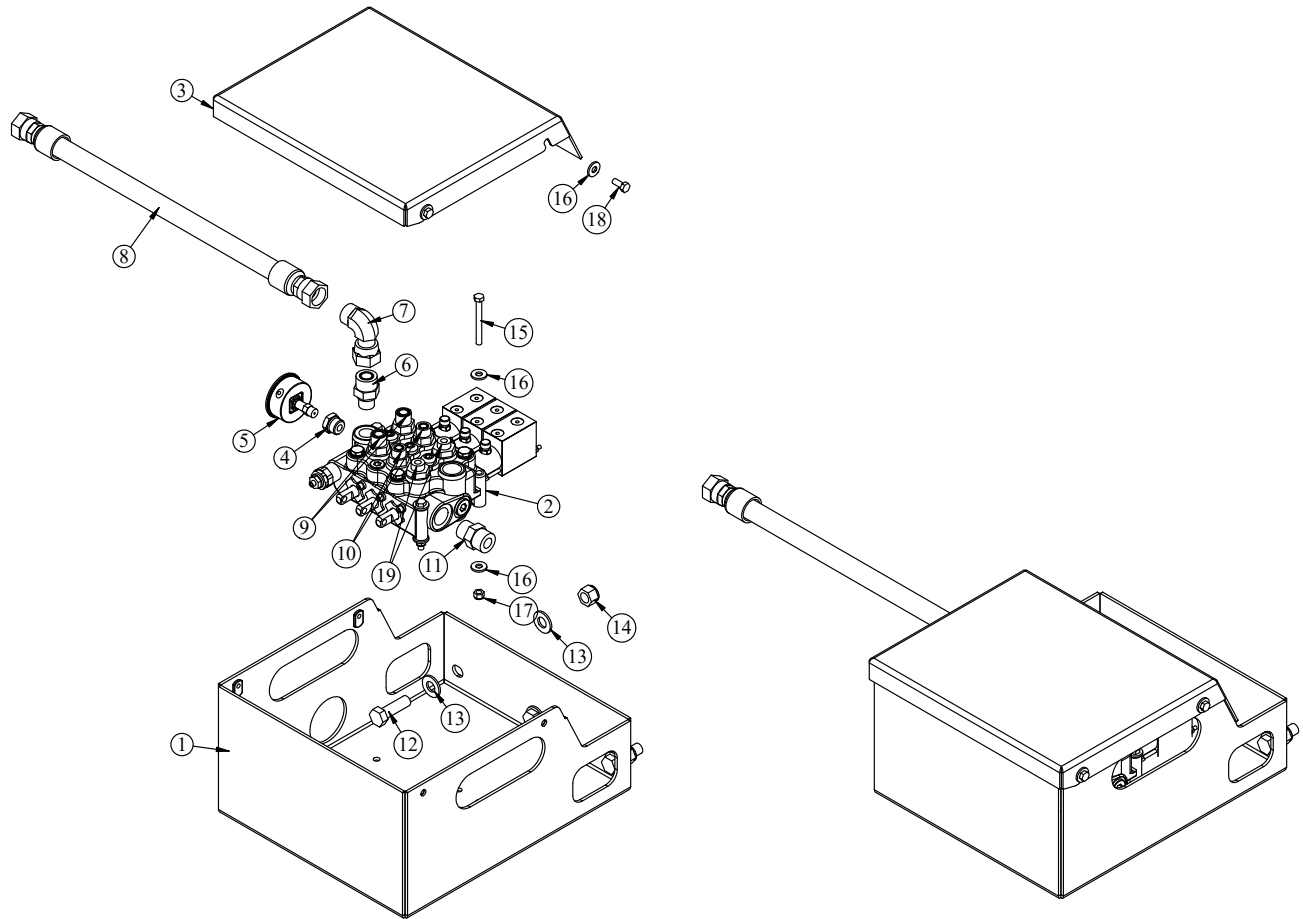


## PN 132682

ITEM	PART	DESCRIPTION	QTY
1	25940	VB 2-SECT VDM8 PAC4-PAC4-4200MRV-(1-A-B-2000-2-A-B-2500)-WLCHA-ZNCT	1
2	69172	PORT RELIEF VDM8 3600 PSI	1

**This page left intentionally blank.**

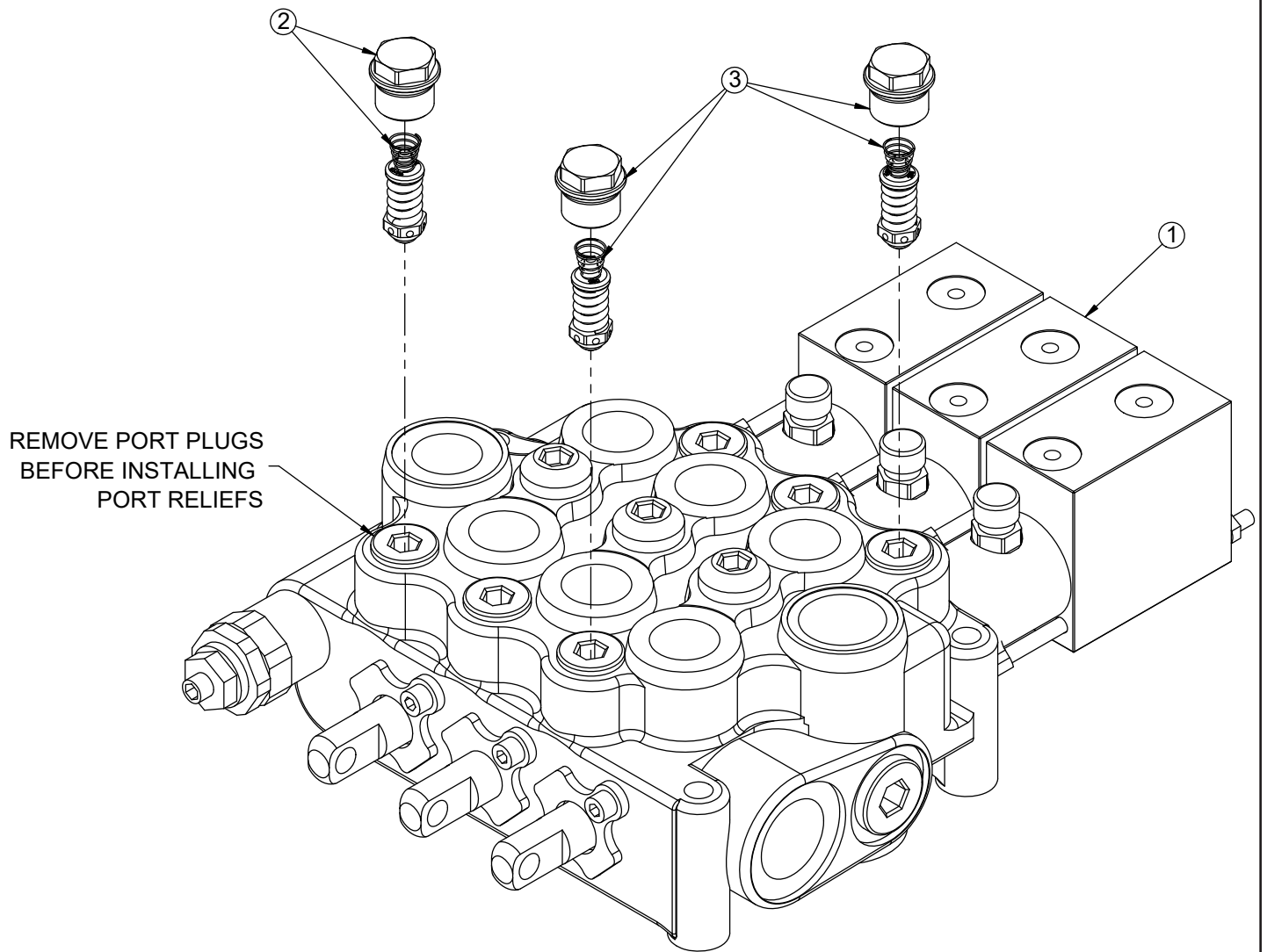
# 3-Section Valve Bank Assembly- PN 132329



## 3-Section Valve Bank Assembly- PN 132329 Parts List

PN 132329			
ITEM	PART	DESCRIPTION	QTY
1	129906	WLDMT VB MNT NXT52	1
2	132328	VB 3-SECT VDM8 PABS4-PABS4-PABS4-4200MRV-LCHA-ZNCT W/PORT RELIEF	1
3	129908	COVER VB MNT NXT52	1
4	55833	FTG 10-4 MORB-FORB STRAIGHT REDUCER	1
5	39780	GAUGE OIL LF 2.5 0-6000 CBM SAE	1
6	D1435	FTG 12-10 MFS-MORB STRAIGHT	1
7	C4903	FTG 12-12 MFS-FFSS 90	1
8	27119	HOSE 0.75(5000PSI)-12FFSS SHORT-12FFSS SHORT-120CL	1
9	16152	FTG 10-10 MFS-MORB STRAIGHT	2
10	C2252	FTG 8-10 MFS-MORB STRAIGHT	2
11	C2142	FTG 12-12 MFS-MORB STRAIGHT	1
12	C1025	CAP SCR 0.63-11X2.00 HHGR8	3
13	C5902	WASHER 0.63 SAE FLAT YELLOW GR8	6
14	24868	NUT 0.63-11 HHGR8 NYLOC	3
15	C0930	CAP SCR 0.31-18X3.00 HHGR5	3
16	0343	WASHER 0.31 USS FLAT	10
17	0342	NUT 0.31-18 HHGR5 NYLOC	3
18	0420	CAP SCR 0.31-18X0.75 HHGR5	4
19	C1855	FTG 6-10 MFS-MORB STRAIGHT	2
REV. INITIAL RELEASE			

# 3-Sect Valve Bank Asm w Port Relief - PN 132328





# 3-Sect Valve Bank Asm w Port Relief - PN 132328 Parts

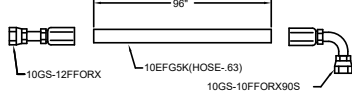
## PN 132328

ITEM	PART	DESCRIPTION	QTY
1	47562	VB 3-SECT VDM8 C4-C4-C4-3400MRV-WCHA-YE-BLK	1
2	69172	PORT RELIEF VDM8 3600 PSI	1
3	26182	PORT RELIEF VDM8 2530 PSI	2

REV. A

# Hose Kit - PN 129649

STELLAR #70410 -0.63(4500PSI)-12FFSS-10FFSS 90 SHORT-96CL  
QTY - 1



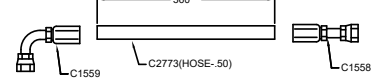
FUNCTION: MAIN CYL. TO VALVE BANK (MAIN EXTEND)

STELLAR #70411 -0.63(4500PSI)-12FFSS-10FFSS 90 LONG-96CL  
QTY - 1



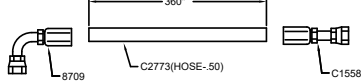
FUNCTION: MAIN CYL. TO VALVE BANK (MAIN RETRACT)

STELLAR #41121 -0.50(4500PSI)-8FFSS-8FFSS 90 SHORT-360CL  
QTY - 1

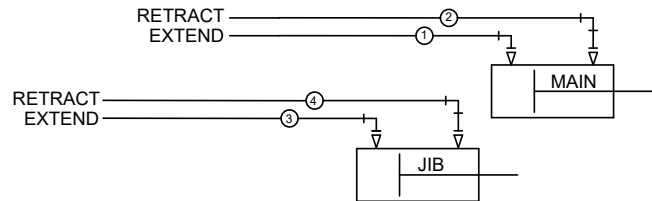
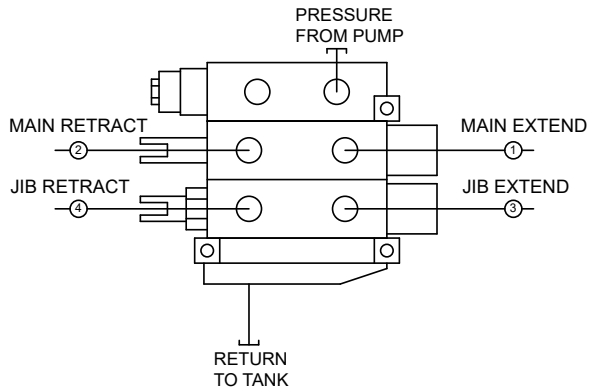


FUNCTION: VALVE BANK (JIB EXTEND) TO JIB CYL

STELLAR #129650 -0.50(4500PSI)-8FFSS-8FFSS 90 LONG-360CL  
QTY - 1



FUNCTION: VALVE BANK (JIB RETRACT) TO JIB CYL



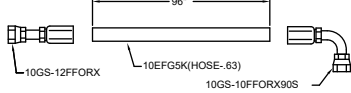
NOTE: SYSTEM PRESSURE IS 4500 psi

## PN 129649

ITEM	PART	DESCRIPTION	QTY
01	70410	HOSE 0.63(4500PSI)-12FFSS-10FFSS 90 SHORT-96CL	2
02	41121	HOSE 0.50(4500PSI)-8FFSS-8FFSS 90 SHORT -360CL	2
REV. A			

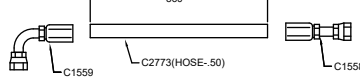
# 3-Section Hose Kit - PN 132321

STELLAR #70410 -0.63(4500PSI)-12FFSS-10FFSS 90 SHORT-96CL  
QTY - 2



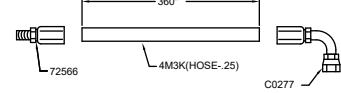
FUNCTION: MAIN CYL. TO VALVE BANK (MAIN EXTEND/RETRACT)

① STELLAR #41121 -0.50(4500PSI)-8FFSS-8FFSS 90 SHORT-360CL  
QTY - 2



FUNCTION: VALVE BANK (JIB EXTEND/RETRACT) TO JIB CYL

② STELLAR #132322 -0.25(3000PSI)-6MFS-6FFSS 90 SHORT-360CL  
QTY - 2



FUNCTION: HOOK PORT TUBE TO VALVE BANK (HOOK EXTEND/RETRACT)

STELLAR #130159 -HOSE TRACK NXT52  
QTY - 1

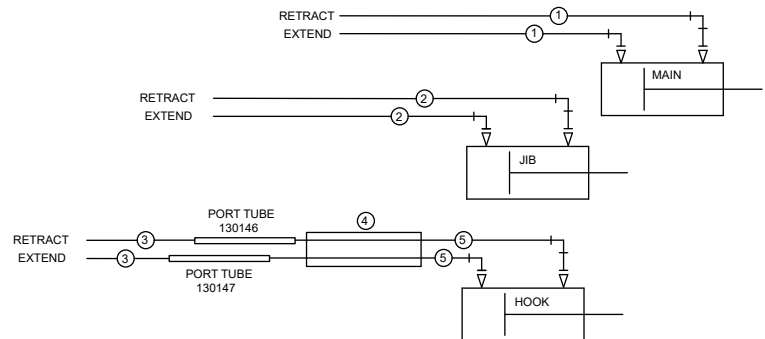
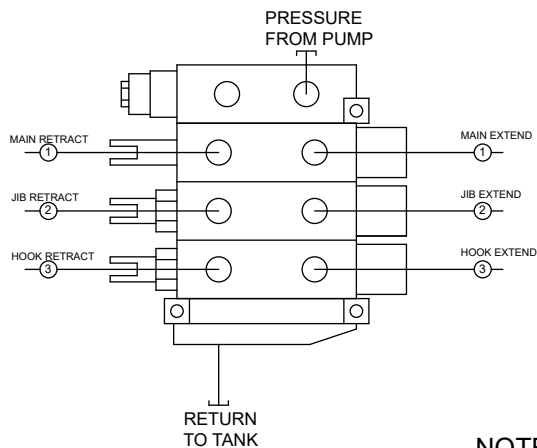


NOTE: BOTH HOOK HOSES TO STICK OUT 15" FROM EACH END OF HOSE TRACK

④ STELLAR #132323 -0.25(3000PSI)-6MFS-6FFSS-93CL  
QTY - 2



FUNCTION: HOOK CYL. TO PORT TUBE (HOOK EXTEND/RETRACT)



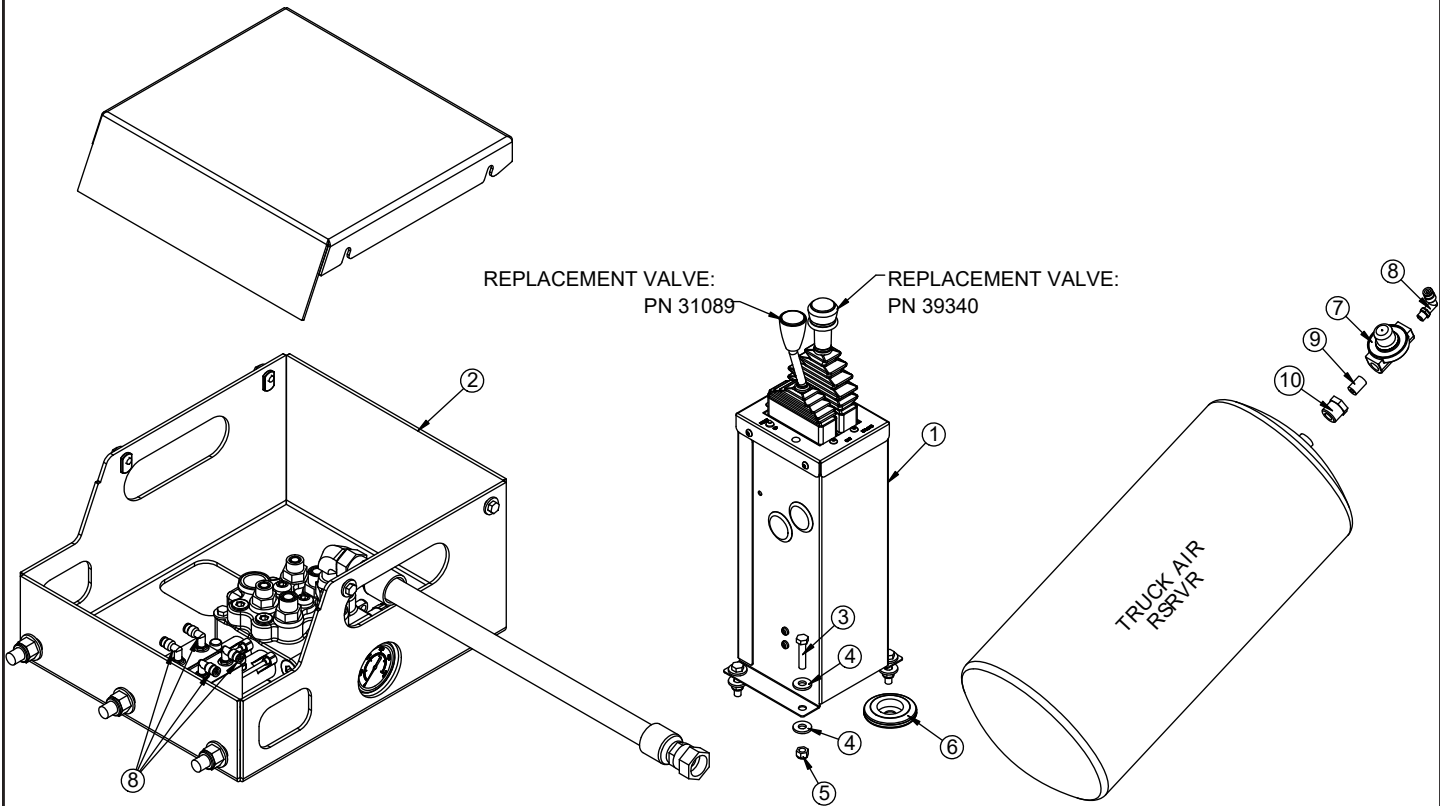
NOTE: SYSTEM PRESSURE IS 4500 psi

## PN 132321

ITEM	PART	DESCRIPTION	QTY
01	70410	HOSE 0.63(4500PSI)-12FFSS-10FFSS 90 SHORT-96CL	2
02	41121	HOSE 0.50(4500PSI)-8FFSS-8FFSS 90 SHORT-360CL	2
03	132322	HOSE 0.25(3000PSI)-6MFS-6FFSS 90 SHORT-360CL	2
04	130159	HOSE TRACK NXT52	1
05	132323	HOSE 0.25(3000PSI)-6MFS-6FFSS-93CL	2

REV. INITIAL RELEASE

# Controller Assembly PN 131283



# Controller Assembly PN 131283 Parts List

## PN 131283

ITEM	PART	DESCRIPTION	QTY
1	131279	CONTROLLER ASM AIR 2 SECT NXT52	1
2	129905	VB ASM 2S VDM8 NXT52	1
3	486	CAP SCR 0.31-18X1.50 HHGR5	4
4	343	WASHER 0.31 USS FLAT	8
5	342	NUT 0.31-18 HHGR5 NYLOC	4
6	16948	GROMMET 2.50ODX1.50GDX0.13X0.56ID	1
7	35211	PTO AIR REGULATOR 378414	1
8	45687	FTG 4-2 MP-PTC 90 BRASS 1169X4S	5
9	C5934	FTG 4-4XCLOSE MP-MP NIPPLE STRAIGHT BLK	1
10	C1065	BUSHING 0.50X0.25 BLK	1

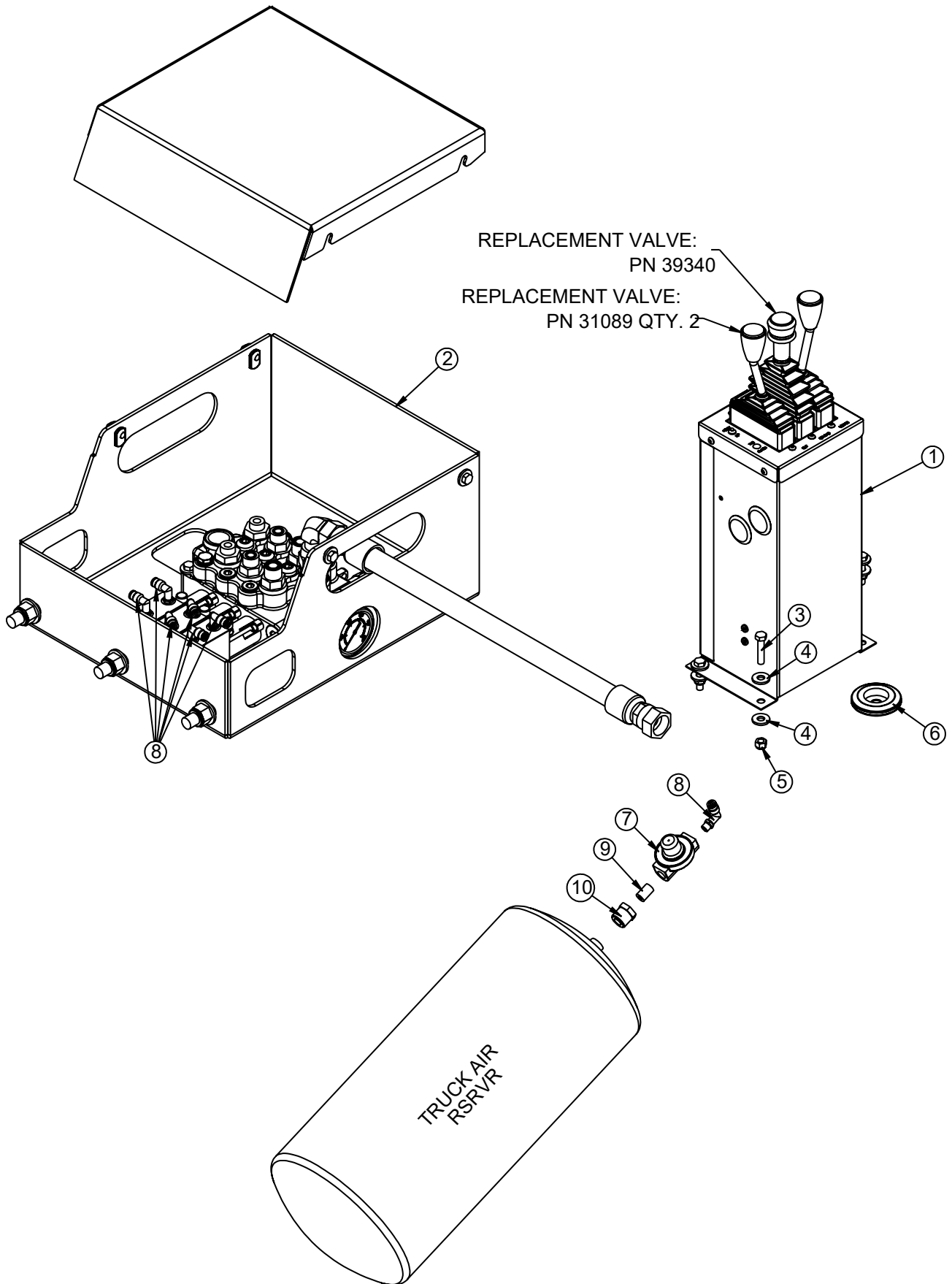
REV. INITIAL RELEASE

## ITEMS NOT SHOWN

PART	DESCRIPTION	QTY
132702	ELECTRICAL KIT AIR NXT 52	1
132688	AIR SCHEM CONTROL TOWER ASM NXT52	1

**NOTES:**  
**ITEMS 3-10 INCLUDED WITH 131279**

# Controller Asm, 3-Sect w VB Asm PN 131705



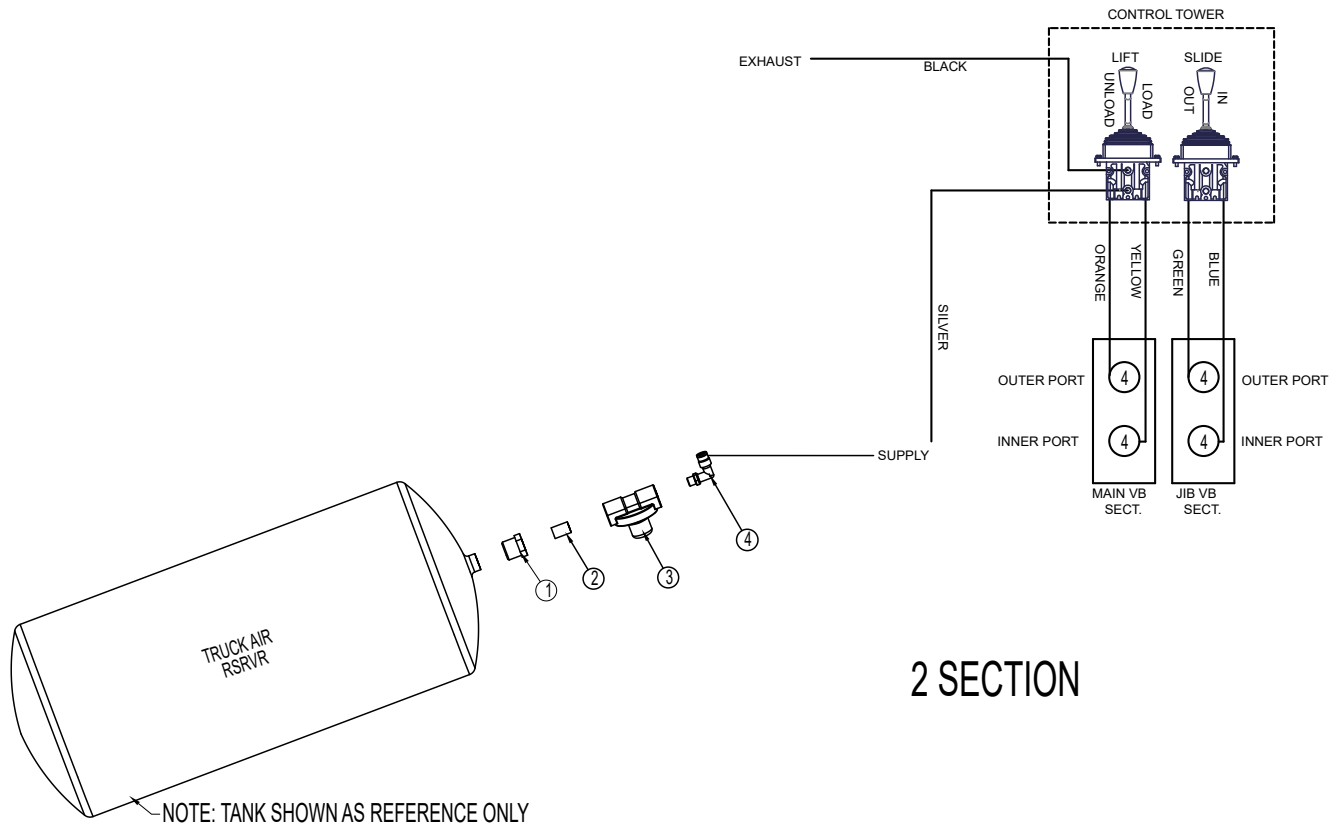
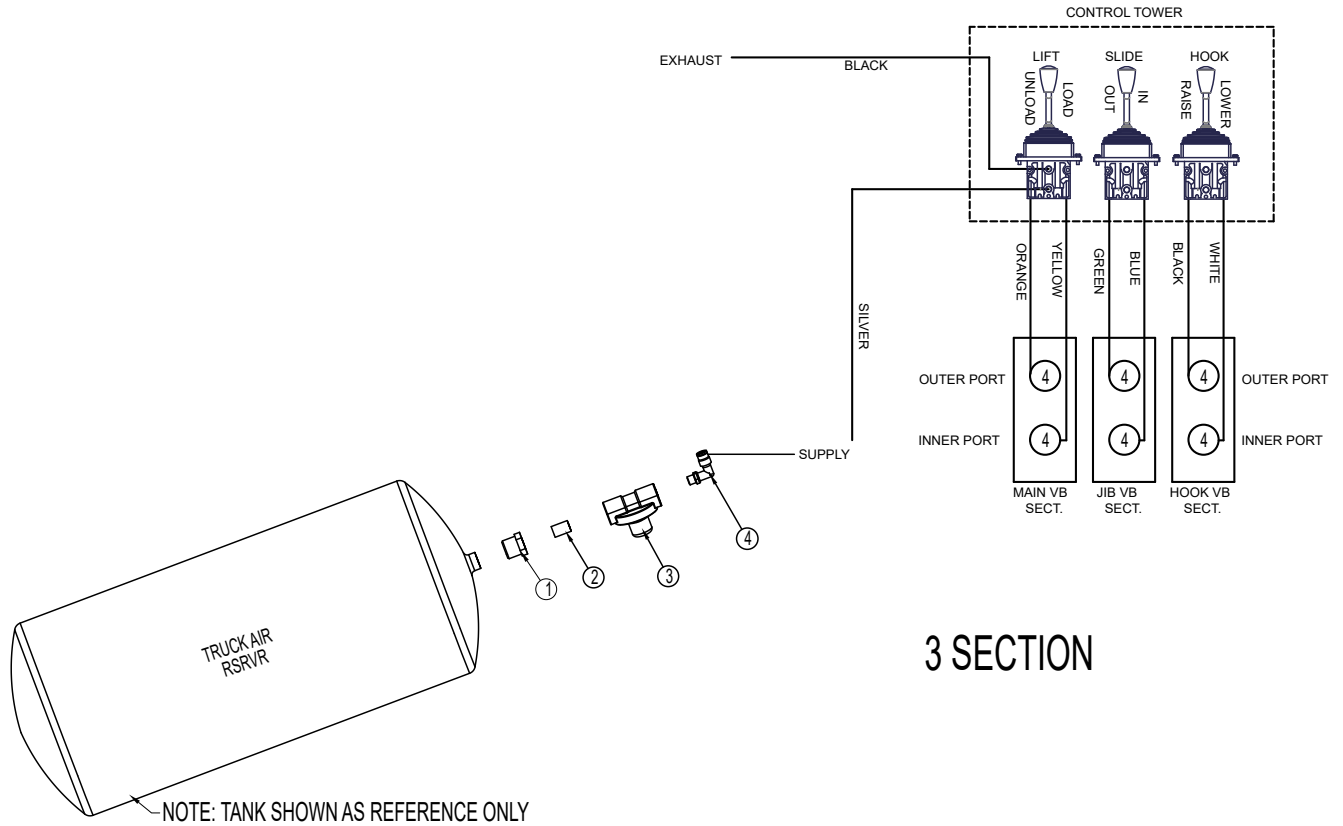
# Controller Asm, 3-Sect w VB Asm PN 131705 Parts List

PN 131705			
ITEM	PART	DESCRIPTION	QTY
1	131707	CONTROLLER ASM AIR 3 SECT NXT52	1
2	132329	VB ASM 3S VDM8 NXT52	1
3	0486	CAP SCR 0.31-18X1.50 HHGR5	4
4	0343	WASHER 0.31 USS FLAT	8
5	0342	NUT 0.31-18 HHGR5 NYLOC	4
6	16948	GROMMET 2.50ODX1.50GDX0.13X0.56ID	1
7	35211	PTO AIR REGULATOR 378414	1
8	45687	FTG 4-2 MP-PTC 90 BRASS 1169X4S	7
9	C5934	FTG 4-4XCLOSE MP-MP NIPPLE STRAIGHT BLK	1
10	C1065	BUSHING 0.50X0.25 BLK	1
REV. INITIAL RELEASE			

ITEMS NOT SHOWN		
PART	DESCRIPTION	QTY
132702	ELECTRICAL KIT AIR NXT 52	1
132688	AIR SCHEM CONTROL TOWER ASM NXT52	1

**NOTE:**  
ITEMS 3-10 INCLUDED WITH 131707.

# Air Schematic Control Tower Asm PN 132688





# Air Schematic Control Tower Asm PN 132688 Parts List

## 3-SECTION PN 132688

ITEM	PART	DESCRIPTION	QTY
1	C1065	BUSHING 0.50X0.25 BLK	1
2	C5934	FTG 4-4XCLOSE MP-MP NIPPLE STRAIGHT BLK	1
3	35211	PTO AIR REGULATOR 378414	1
4	45687	FTG 4-2 MP-PTC 90 BRASS 1169X4S1	7

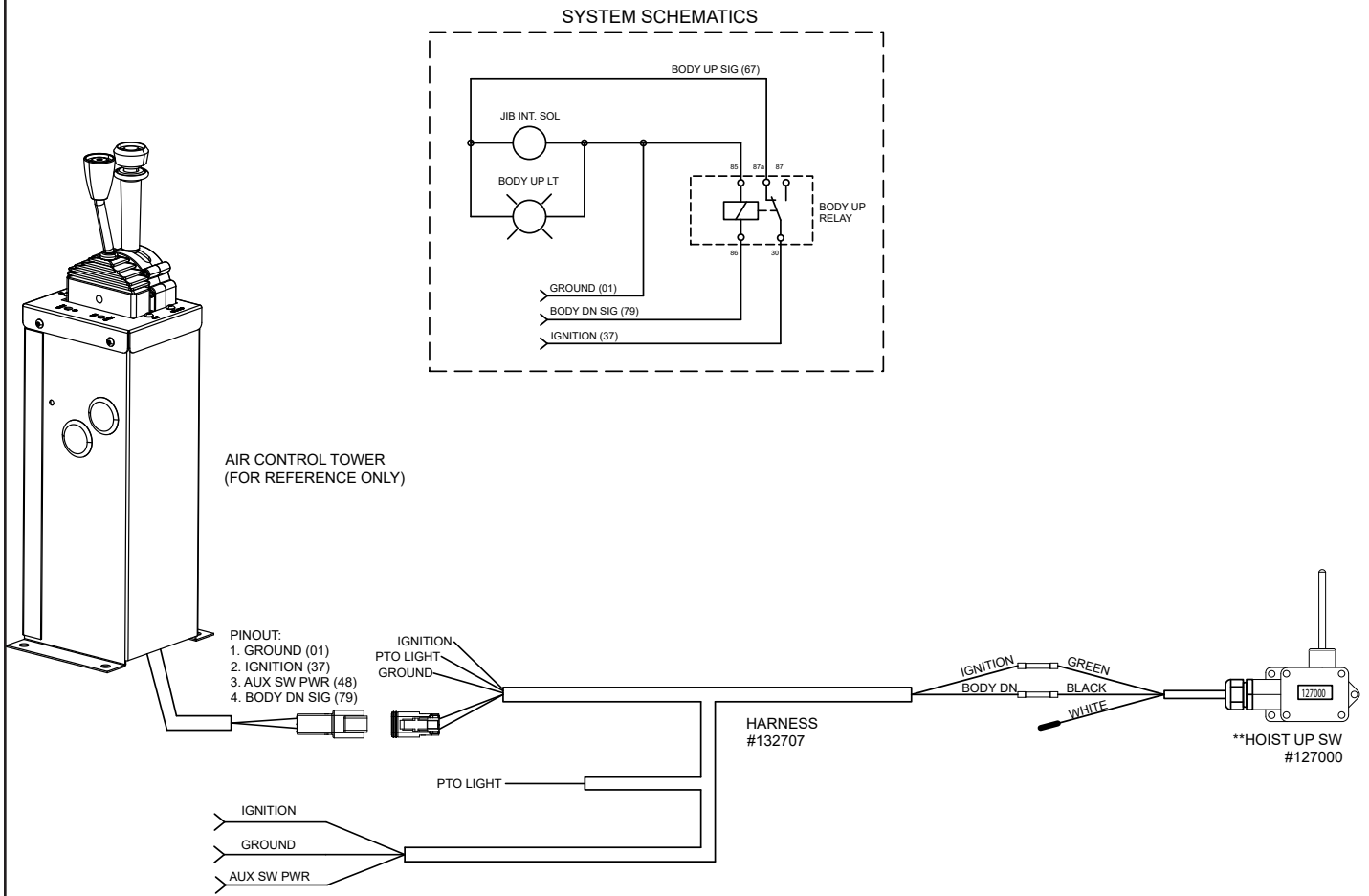
TUBING COLOR CODE	
COLOR	APPLICATION
SILVER	SUPPLY
BLACK	EXHAUST
GREEN	SLIDE OUT
BLUE	SLIDE IN
ORANGE	LIFT UNLOAD
YELLOW	LIFT LOAD
WHITE	HOOK LOWER
BLACK	HOOK RAISE

## 2-SECTION PN 132688

ITEM	PART	DESCRIPTION	QTY
1	C1065	BUSHING 0.50X0.25 BLK	1
2	C5934	FTG 4-4XCLOSE MP-MP NIPPLE STRAIGHT BLK	1
3	35211	PTO AIR REGULATOR 378414	1
4	45687	FTG 4-2 MP-PTC 90 BRASS 1169X4S1	7

TUBING COLOR CODE	
COLOR	APPLICATION
SILVER	SUPPLY
BLACK	EXHAUST
GREEN	SLIDE OUT
BLUE	SLIDE IN
ORANGE	LIFT UNLOAD
YELLOW	LIFT LOAD

# Electrical Schematic PN 132702

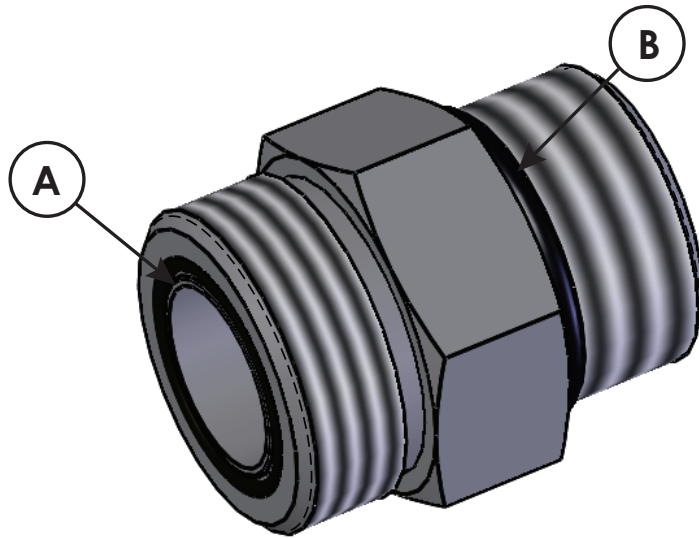


## PN 132702

PART	DESCRIPTION	QTY
132707	WIRE HRNS CHASSIS EXT NXT 52	1
127153	KIT RAISED HOIST INDICATOR LIGHT NXT	1
C0073	TERML BUTT 16-14GA HS BLUE	3
REV. B R880		

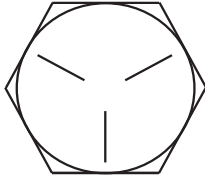
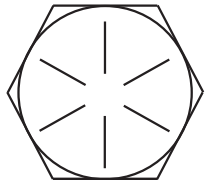
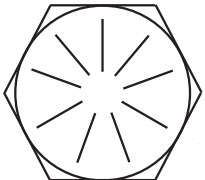
**This page left intentionally blank.**

## Face Seal / O-Ring Size Chart



HOSE SIZE	FITTING SIZE	FACE SEAL (A) STELLAR PART NUMBER	O-RING BOSS (B) STELLAR PART NUMBER
1/4"	#4	C2027	D1245
3/8"	#6	C2028	D1246
1/2"	#8	C2029	D1247
5/8"	#10	32223	D1248
3/4"	#12	D1244	D1249
1"	#16		D1250

# Torque Data Chart

		GRADE 5		GRADE 8		GRADE 9
						
SIZE (DIA - TPI)	BOLT DIA (INCHES)	PLAIN ( FT-LB)	PLATED (FT-LB)	PLAIN (FT-LB)	PLATED (FT-LB)	PLATED (FT-LB)
5/16-18	0.3125	17	13	25	18	22
3/8-16	0.3750	31	23	44	33	39
7/16-14	0.4375	49	37	70	52	63
1/2-13	0.5000	75	57	105	80	96
9/16-12	0.5625	110	82	155	115	139
5/8-11	0.6250	150	115	220	160	192
3/4-10	0.7500	265	200	375	280	340
7/8-9	0.8750	395	295	605	455	549
1-8	1.000	590	445	910	680	823
1 1/8-7	1.1250	795	595	1290	965	1167
1 1/4-7	1.2500	1120	840	1815	1360	1646
1 3/8-6	1.3750	1470	1100	2380	1780	2158
1 1/2-6	1.500	1950	1460	3160	2370	2865

## Torquing Information & Warnings

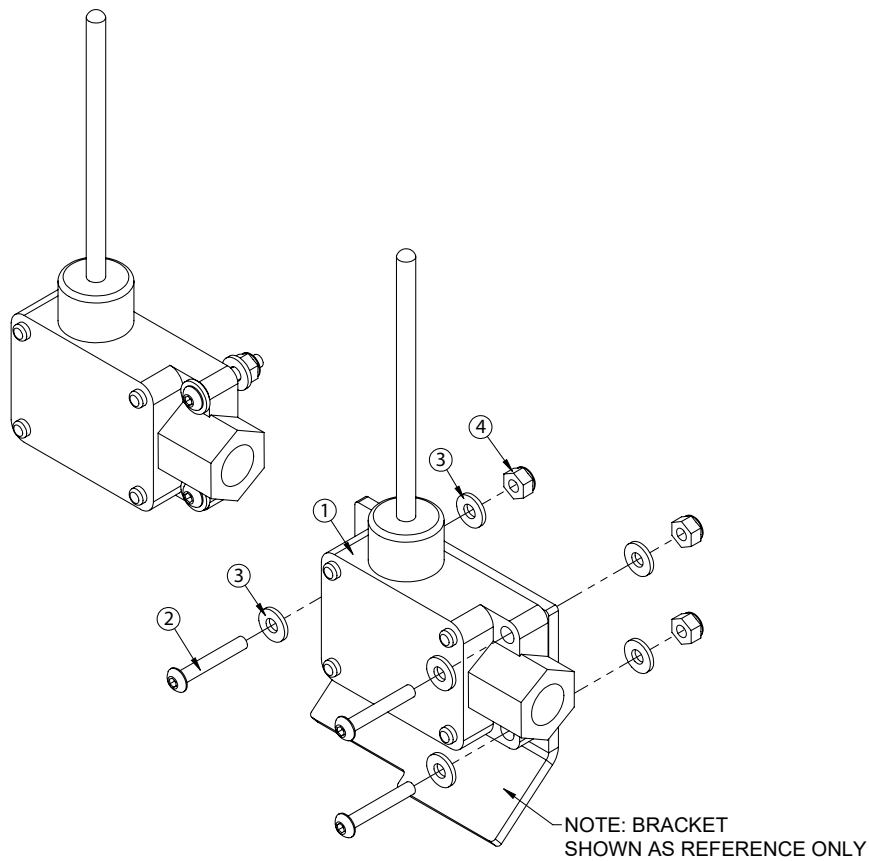
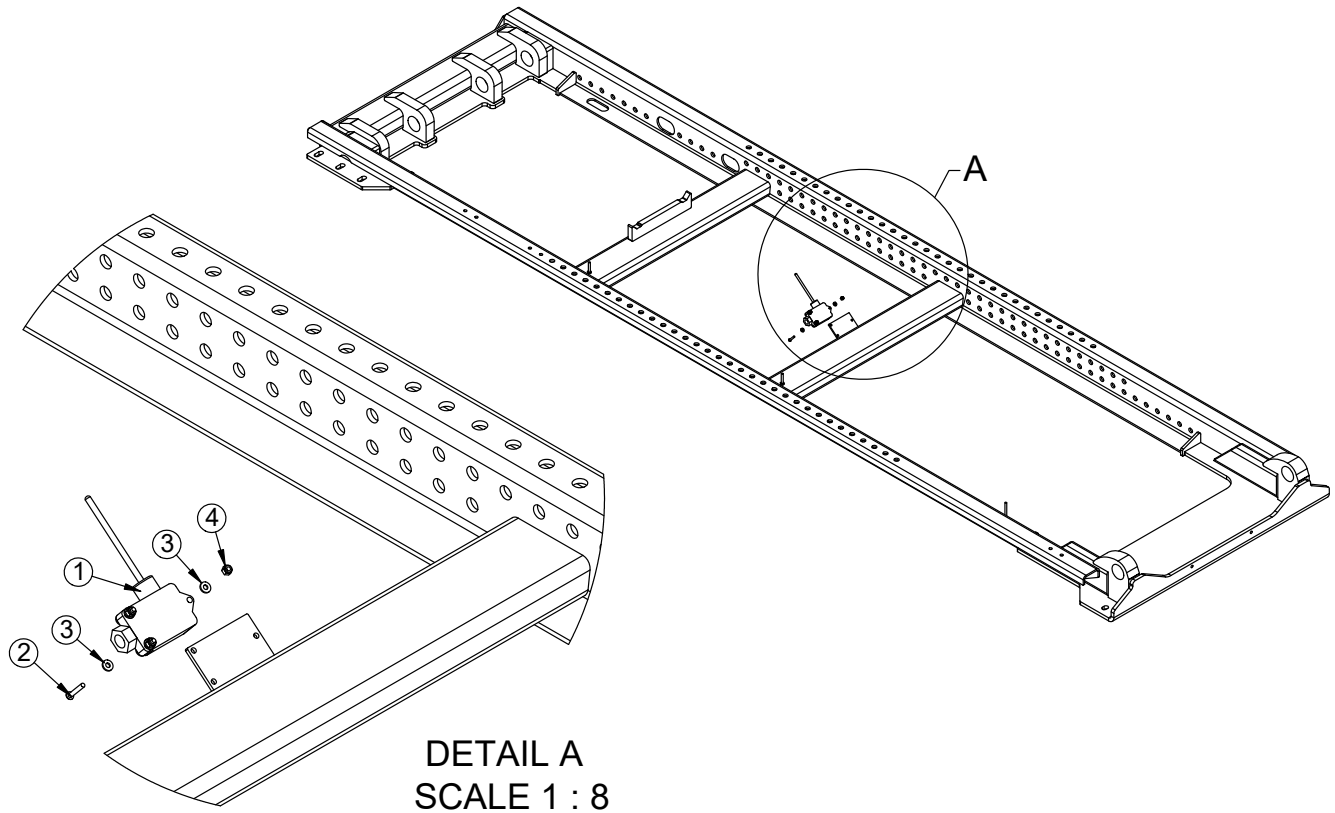
**⚠ WARNING** When using the torque data in the chart, the following rules should be observed:

- **Bolt manufacturer's** particular specifications should be consulted when provided.
- **Flat washers** of equal strength must be used.
- **All torque measurements** are given in foot-pounds. To convert to inch-pounds, multiply by 12.
- **Torque values** specified are for bolts with residual oils or no special lubricants\* applied. If special lubricants of high stress ability, such as Never-Seez compound graphite and oil, molybdenum disulphite, colloidal copper or white lead are applied, multiply the torque values in the charts by the factor .90. The use of Loctite does not affect the torque values listed above.
- **Torque values** for socket-head capscrews are the same as for Grade 8 capscrews.
- **Do not use these values** if a different torque value or tightening procedure is given for a specific application. Torque values listed are for general use only. Check tightness of fasteners periodically.
- **Shear bolts** are designed to fail under predetermined loads. Always replace shear bolts with identical grade.
- **Fasteners** should be replaced with the same or higher grade. If higher grade fasteners are used, these should only be tightened to the strength of the original.
- **Tighten** plastic insert or crimped steel-type lock nuts to approximately 110 percent of the dry torque values shown in the chart on page 8, applied to the nut, not to the bolt head. Tighten toothed or serrated-type lock nuts to the full torque value.

### NOTICE

*\*Lubricated means coated with a lubricant such as engine oil, or fasteners with phosphate and oil coatings. "Dry" means plain or zinc plated without lubrication. Tighten lubricated bolts to approximately 80% of dry bolts.*

# Raised Hoist Indicator Light Kit - PN 127153



# Raised Hoist Indicator Light Kit - PN 127153 Parts List

## PN 127153

ITEM	PART	DESCRIPTION	QTY
1	127000	SWITCH ASM HOIST UP NXT	1
2	30472	CAP SCR #10-24X1.25 BTNHD SS	3
3	D0178	WASHER #10 SAE FLAT	6
4	26034	NUT #10-24 HH NYLOC	3
INITIAL RELEASE			

### NOTES:

SEE CONTROLLER ASM FOR WIRING.

### FOR REFERENCE:

- GREEN TO IGNITION
- BLACK TO BODY DN
- WHITE TO BODY UP

**This page left intentionally blank.**

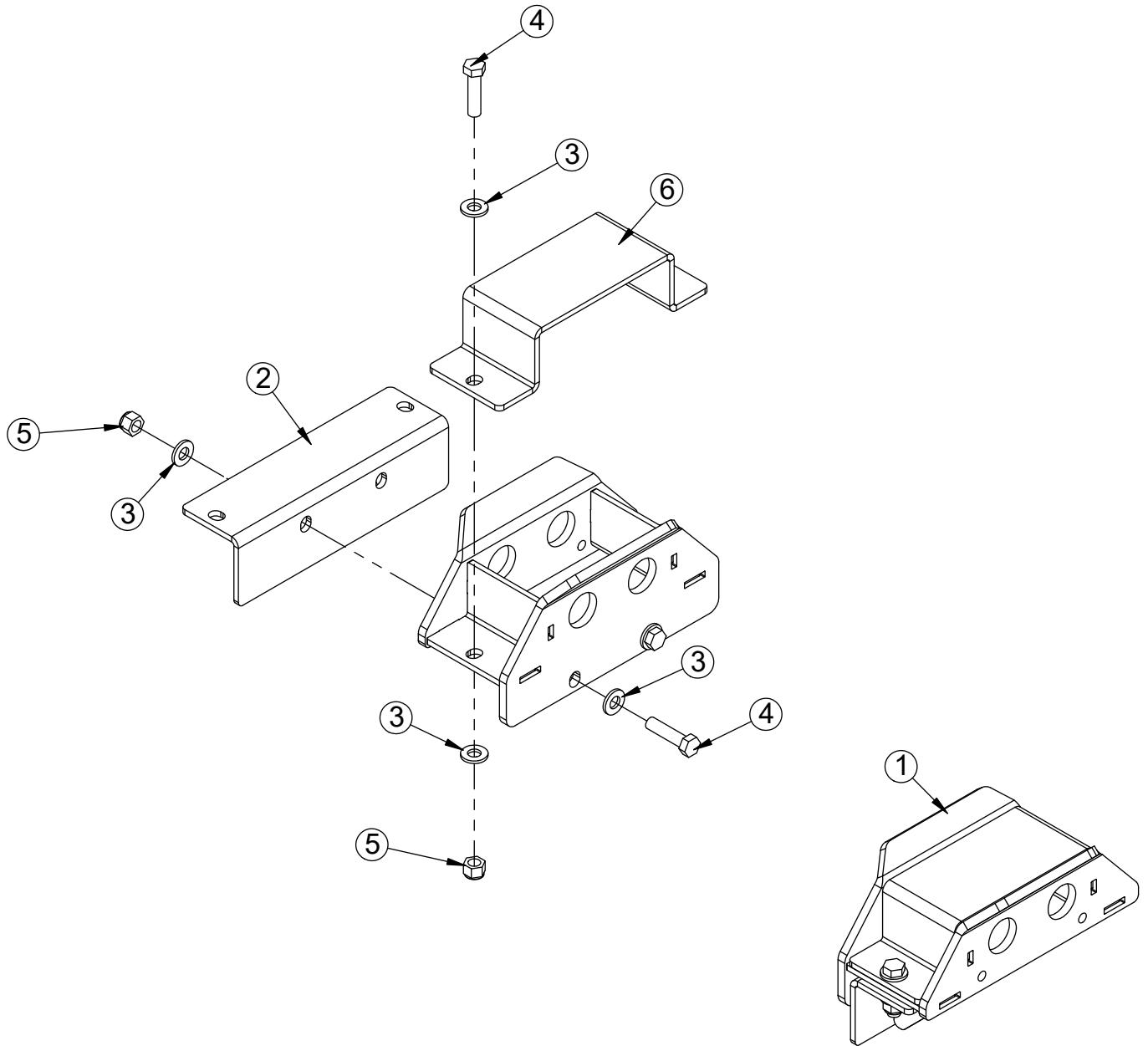


# Chapter 4 - Accessory Drawings

## CHAPTER CONTENTS

Saddle Asm Skid Plate - PN 129504.....	54
Saddle Asm Skid Plate - PN 129504 Parts List.....	55
Saddle Asm Roller - PN 129373 .....	56
Saddle Asm Roller - PN 129373 Parts List .....	57
NXT52 Outside Latch Asm Bolt On - PN 129856.....	58
NXT52 Outside Latch Asm Bolt On - 129856 Parts List.....	59
Skid Drawing 61.75HH - PN 132904.....	60
Skid Drawing 54.00HH - PN 133932.....	61
NXT52 Hooklift Decals - PN 127720.....	62

# Saddle Asm Skid Plate - PN 129504

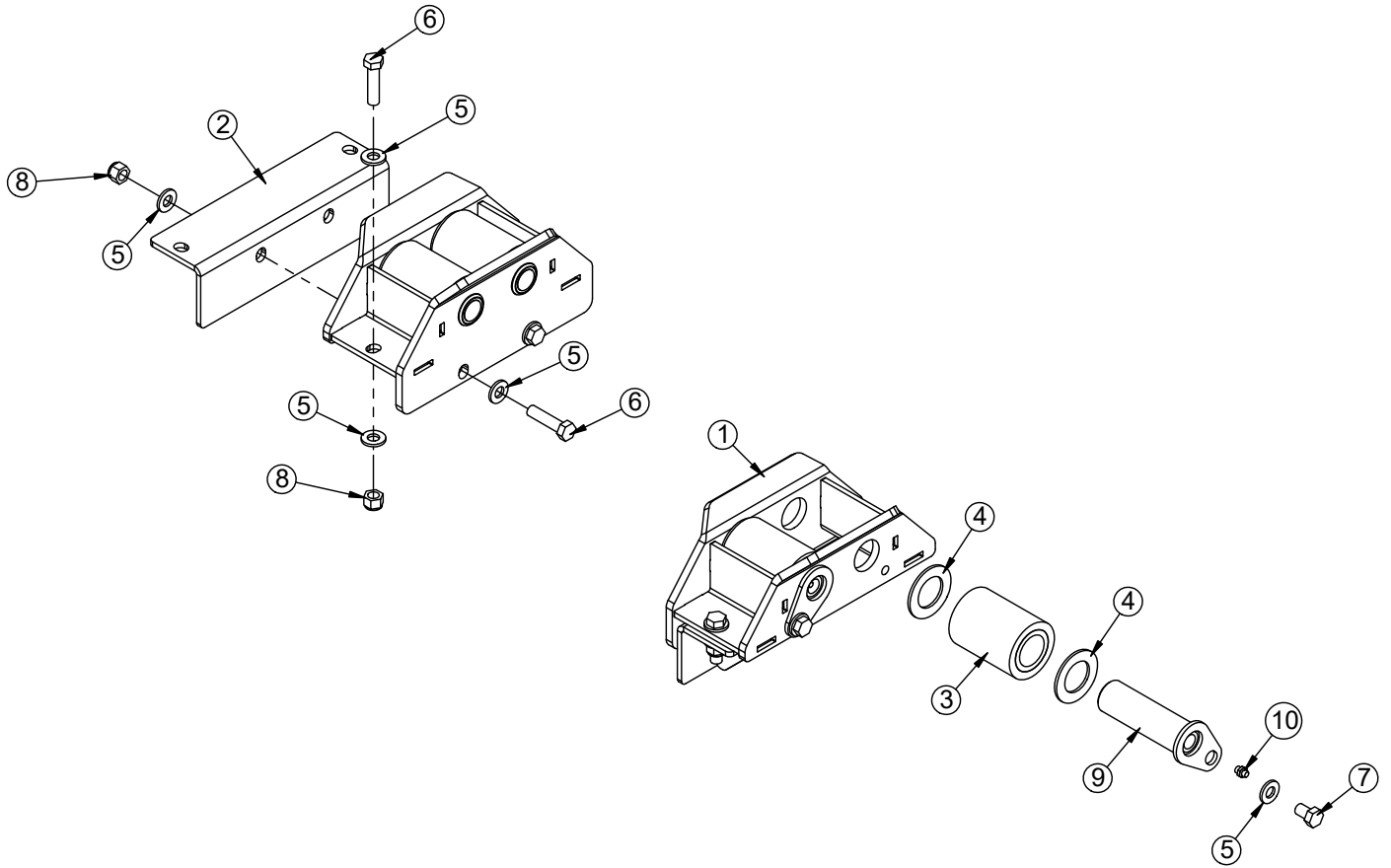


# Saddle Asm Skid Plate - PN 129504 Parts List

## PN 129504

ITEM	PART	DESCRIPTION	QTY
1	129374	WLDMT SADDLE CARRIAGE NXT52	2
2	129378	WLDMT SADDLE SUPPORT NXT52	2
3	D0790	WASHER 0.50 SAE FLAT YELLOW GR8	16
4	8833	CAP SCR 0.50-13X2.00 HHGR8	8
5	5468	NUT 0.50-13 HHGR8 NYLOC	8
6	129503	FORMED SADDLE WEAR PLATE NXT52	2
INITIAL RELEASE			

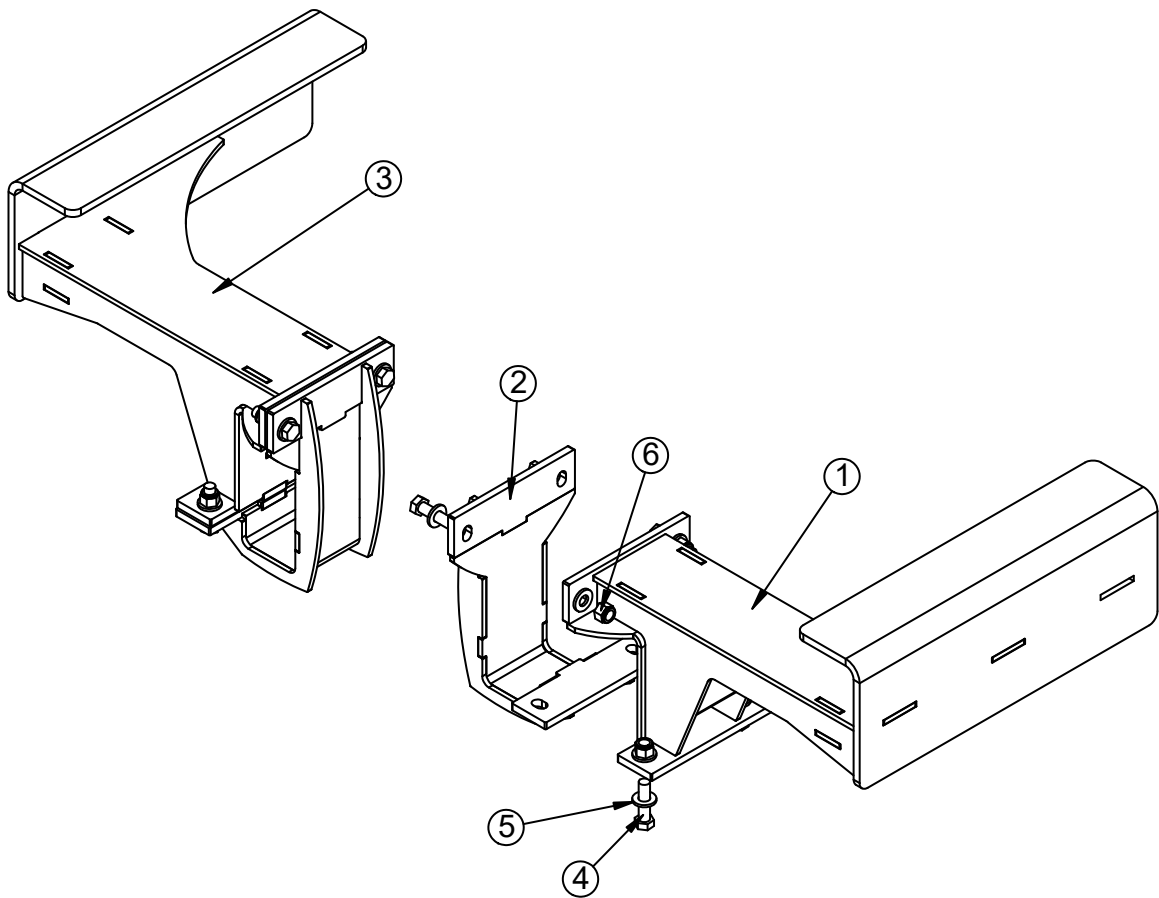
# Saddle Asm Roller - PN 129373



# Saddle Asm Roller - PN 129373 Parts List

PN 129373			
ITEM	PART	DESCRIPTION	QTY
1	129374	WLDMT SADDLE CARRIAGE NXT52	2
2	129378	WLDMT SADDLE SUPPORT NXT52	2
3	124209	ROLLER ASM 1.50X2.75X3.69	4
4	D0419	THRUST WASHER	8
5	D0790	WASHER 0.50 SAE FLAT YELLOW GR8	20
6	8833	CAP SCR 0.50-13X2.00 HHGR8	8
7	9844	CAP SCR 0.50-13X0.75 HHGR8	4
8	5468	NUT 0.50-13 HHGR8 NYLOC	8
9	123773CR	PIN TEAR DROP 1.50X4.94 W/ZERK ZC	4
10	C1592	ZERK 1/8 NPT STRAIGHT	4
INITIAL RELEASE			

# NXT52 Outside Latch Asm Bolt On - PN 129856

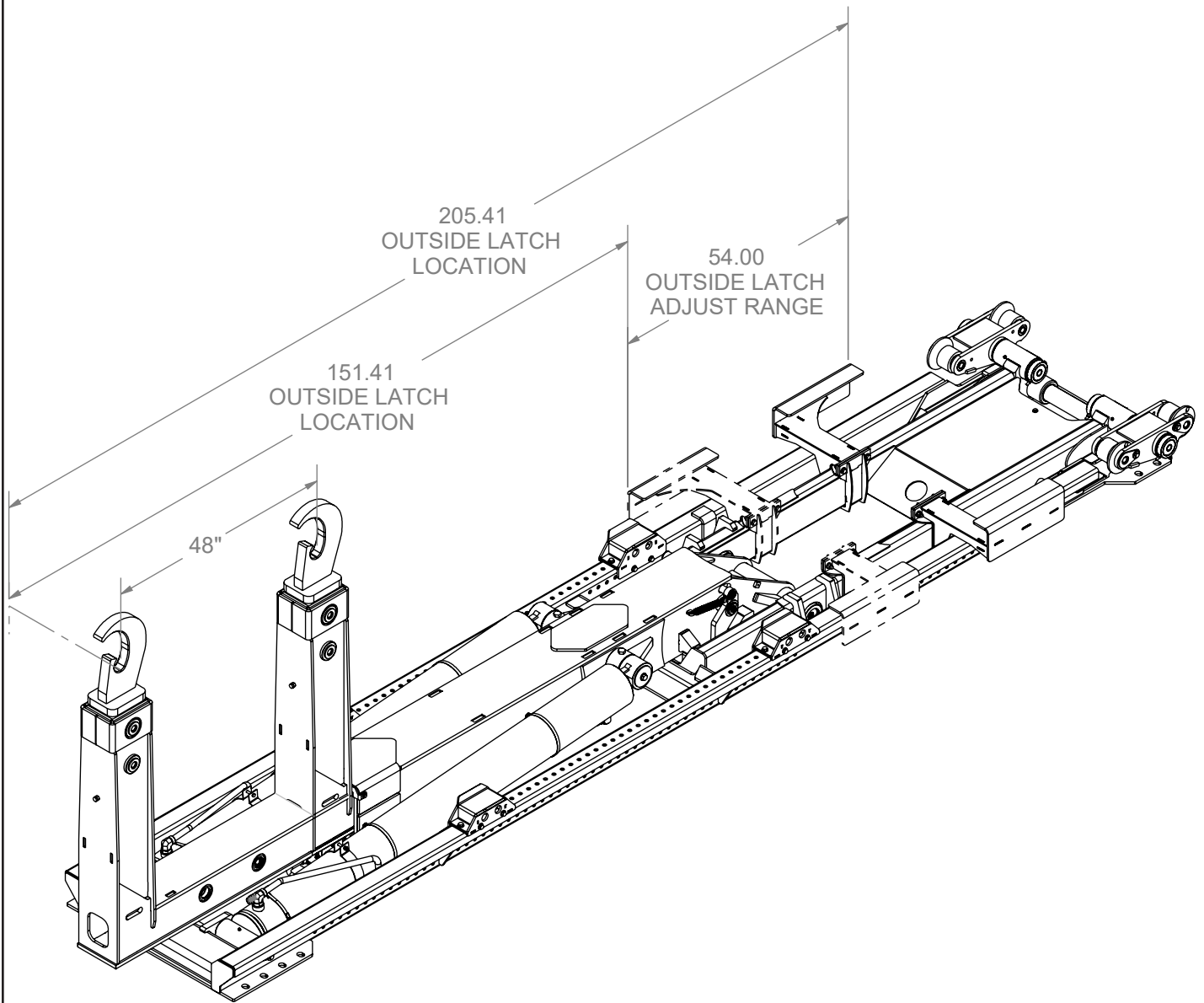


# NXT52 Outside Latch Asm Bolt On - 129856 Parts List

**PN 129856**

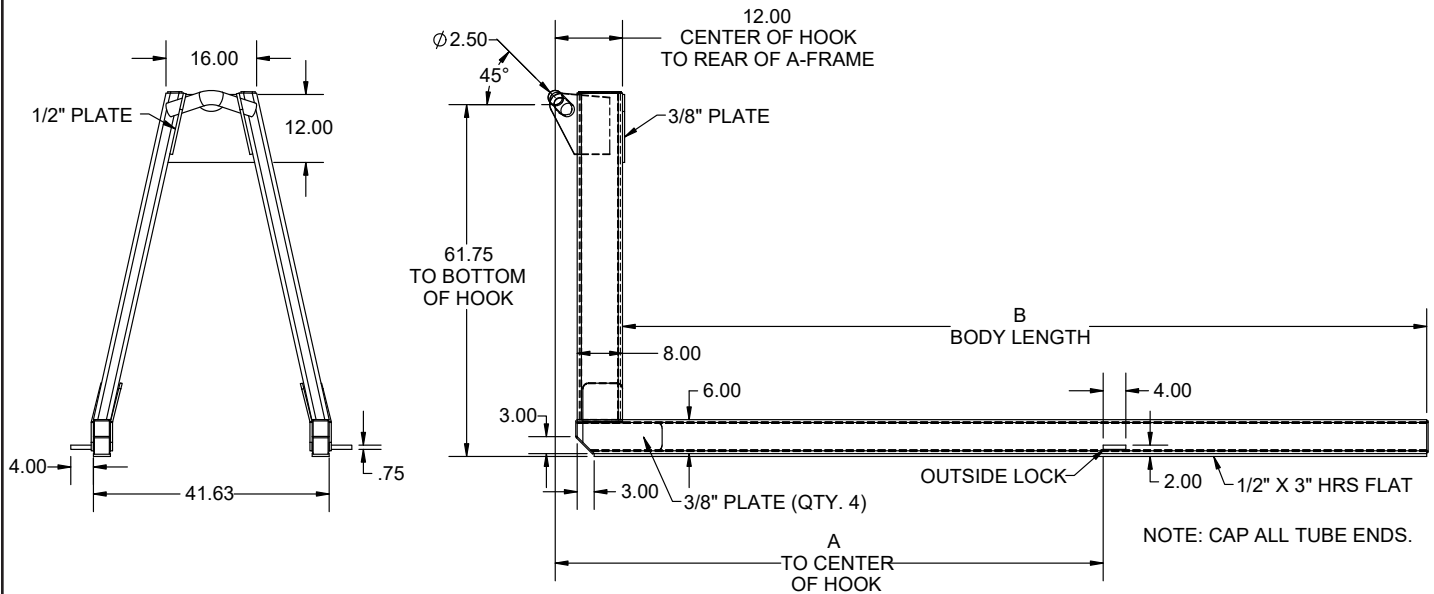
<b>ITEM</b>	<b>PART</b>	<b>DESCRIPTION</b>	<b>QTY</b>
1	129557	WLDMNT LOCK OUTER SS NXT52	1
2	129558	WLDMT SUPPORT LATCH INNER NXT52	2
3	129858	WLDMNT LOCK OUTER CS NXT52	1
4	8833	CAP SCR 0.50-13X2.00 HHGR8	8
5	D0790	WASHER 0.50 SAE FLAT YELLOW GR8	16
6	5468	NUT 0.50-13 HHGR8 NYLOC	8
REV. A			

# NXT52 Outside Latch Assembly Location





# Skid Drawing 61.75HH - PN 132904

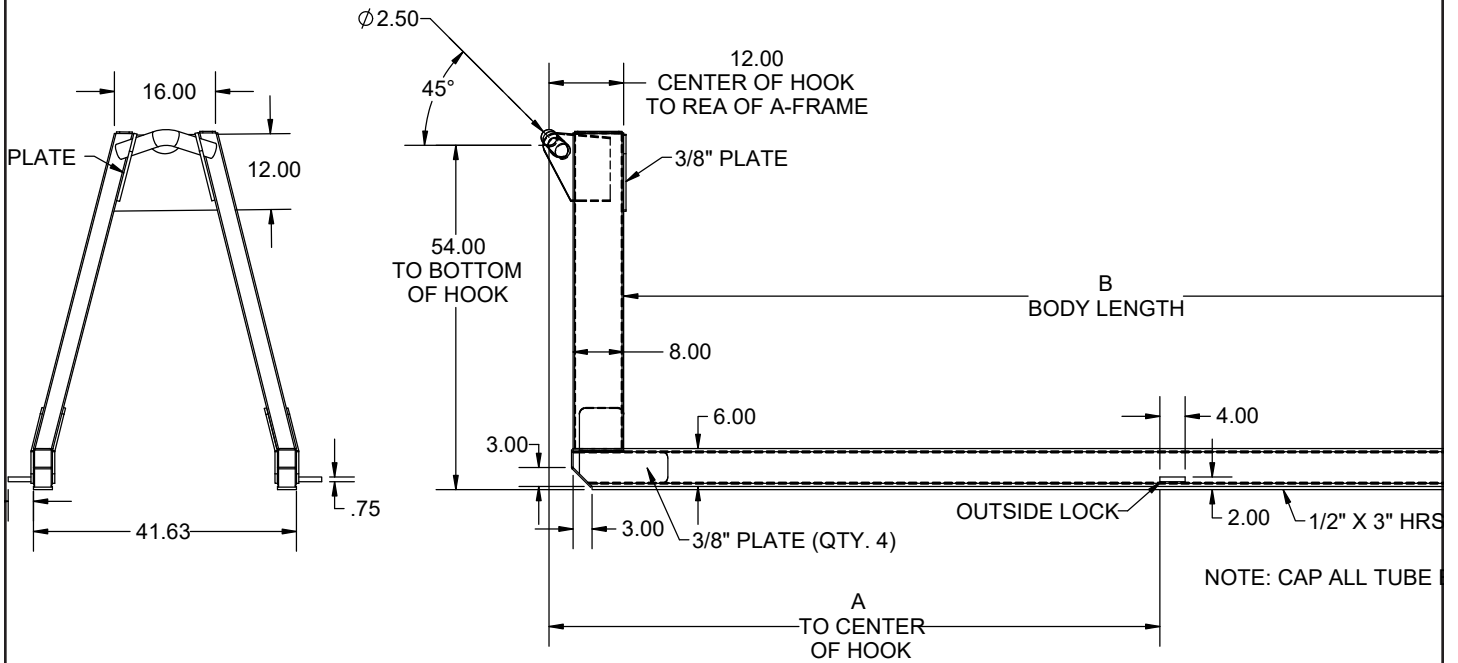


## PN 132904

PART NO.	DESCRIPTION	A	B
29147	SKID 61.75HH 8X3 16' 156" OUTSIDE LOCK	156	192
134159	SKID 61.75HH 8X3 17' 156" OUTSIDE LOCK	156	204
8584	SKID 61.75HH 8X3 18' 156" OUTSIDE LOCK	156	216
8585	SKID 61.75HH 8X3 19' 156" OUTSIDE LOCK	156	228
8586	SKID 61.75HH 8X3 20' 197.25" OUTSIDE LOCK	197.25	240
8587	SKID 61.75HH 8X3 21' 197.25" OUTSIDE LOCK	197.25	252
8588	SKID 61.75HH 8X3 22' 197.25" OUTSIDE LOCK	197.25	264

**NOTES:**  
**DRAWING FOR DIMENSIONAL PURPOSES ONLY.**  
**\*DIMENSIONS IN INCHES.**

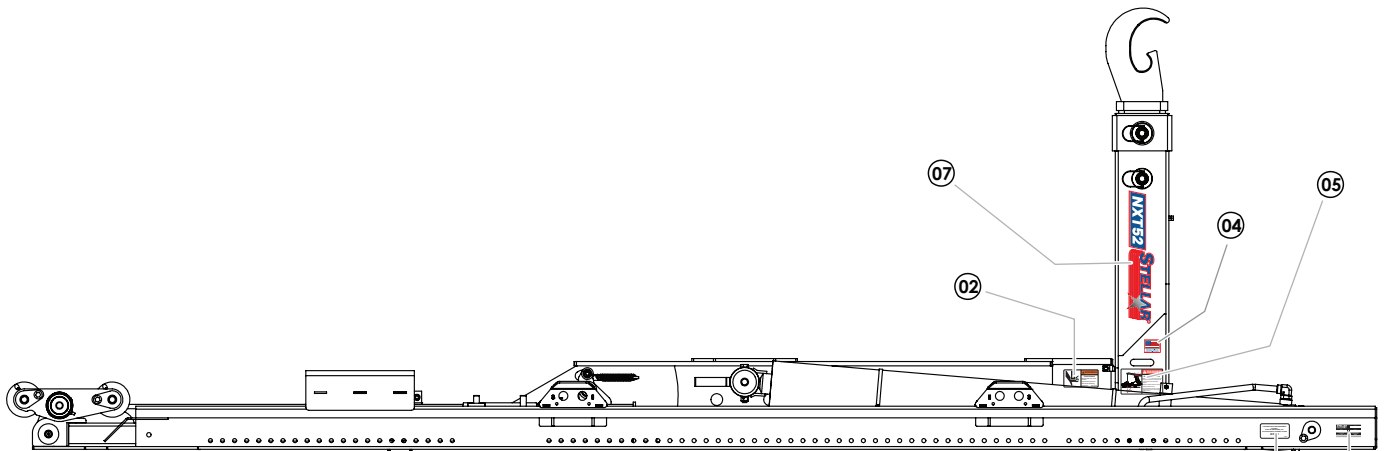
# Skid Drawing 54.00HH - PN 133932



PN 133932			
PART NO.	DESCRIPTION	A	B
134152	SKID 54.00HH 8X3 16' 156" OUTSIDE LOCK	156	192
134153	SKID 54.00HH 8X3 17' 156" OUTSIDE LOCK	156	204
134154	SKID 54.00HH 8X3 18' 156" OUTSIDE LOCK	156	216
134155	SKID 54.00HH 8X3 19' 156" OUTSIDE LOCK	156	228
134156	SKID 54.00HH 8X3 20' 197.25" OUTSIDE LOCK	197.25	240
134157	SKID 54.00HH 8X3 21' 197.25" OUTSIDE LOCK	197.25	252
134158	SKID 54.00HH 8X3 22' 197.25" OUTSIDE LOCK	197.25	264


**NOTES:**  
**DRAWING FOR DIMENSIONAL PURPOSES ONLY.**  
**\*DIMENSIONS IN INCHES.**

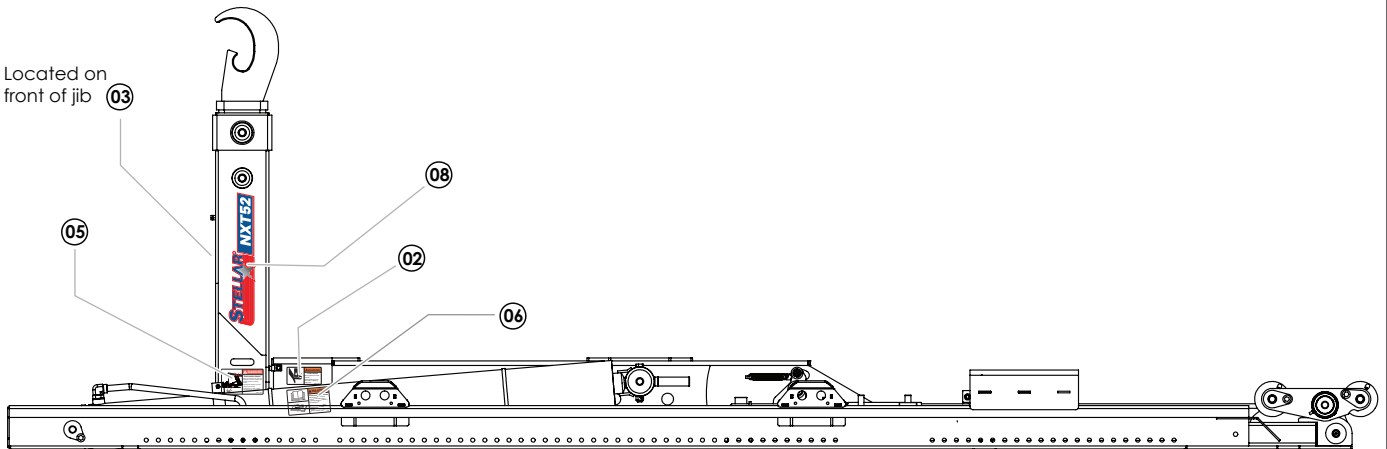
# NXT52 Hooklift Decals - PN 127720



**PN 127720**  
(Release - 04/03/23)

SERIAL PLATE (C5942)  
NOT INCLUDED  
WITH DECAL KIT

 Located on  
front of jib



ITEM	PN	DESCRIPTION	QTY
01	4214	DECAL CONTACT STELLAR	1
02	25627	DECAL WARNING CRUSH	2
03	45955	DECAL WARNING HOOK HEIGHT MATCH	1
04	35234	DECAL STELLAR MADE IN THE USA	1
05	55832	DECAL DANGER ELECTROCUTION HOOK	2
06	68024	DECAL WARNING UNTRAINED OPERATOR	1
07	131093	DECAL NXT52 STRIPE CS	1
08	131092	DECAL NXT52 STRIPE SS	1





Subject to Change without Notification.  
© 2023 Stellar Industries, Inc.