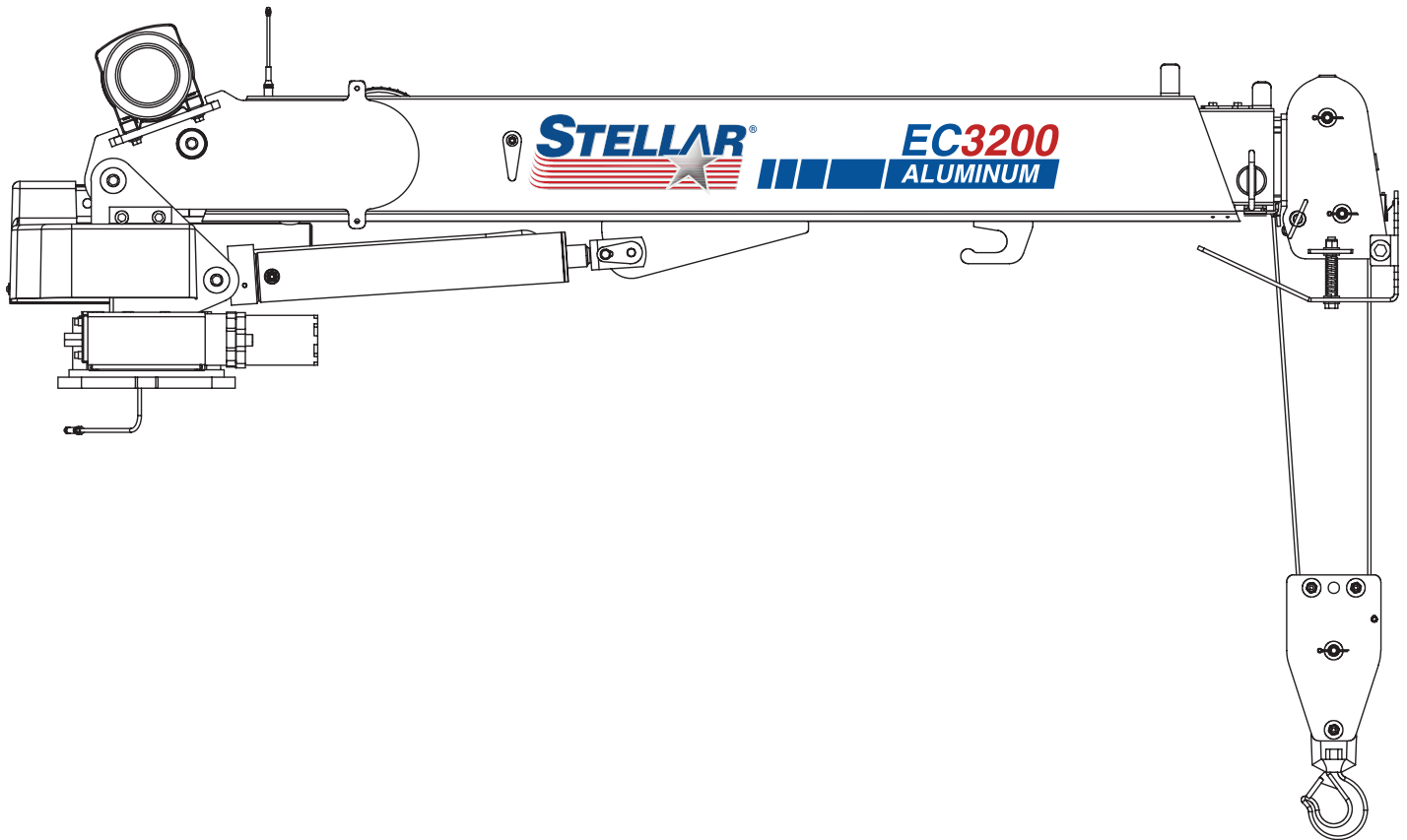




MODEL EC3200

ALUMINUM TELESCOPIC CRANE OPERATION MANUAL

Installation • Assembly Drawings • Parts



Notice: A copy of this manual must remain with the equipment at all times.
For a printable download copy, please visit: www.stellarindustries.com

Stellar Industries, Inc.

190 State Street

PO Box 169=

Garner, IA 50438

800-321-3741

Fax: 641-923-2811

www.stellarindustries.com

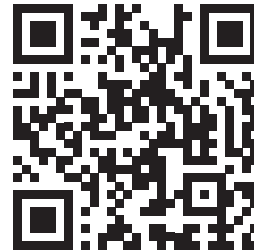
Subject to Change without Notification.
© 2023 Stellar Industries, Inc.

Rev 3
PN 95529

P65 Warning / Serial Tag Location / Cold Weather

⚠ WARNING

Operating, maintaining, and servicing a Stellar product may expose you to chemicals including, but not limited to, engine exhaust, carbon monoxide, phthalates, and lead. These chemicals are known to the State of California to cause cancer and birth defects (or other reproductive harm). To keep your exposure to a minimum, be sure to avoid breathing exhaust and service your Stellar product in a well-ventilated area while wearing gloves or washing your hands frequently. For more information, go to www.P65Warnings.ca.gov/passenger-vehicle.



www.p65warnings.ca.gov

NOTICE

Cold Weather Performance

Although clear data on cold weather performance from every steel manufacturer is not available for all types and thicknesses of steel, Stellar Industries is confident that the weldments on our products will operate to 100% of their intended purpose to temperatures down to -40° F / C.

It is recommended if Stellar manufactured equipment needs to be used in temperatures below -40° F / C, the operator should pull the unit into a climate-controlled area and allow the weldments to warm up to and then maintain a temperature above this level.

Serial Tag Location

STELLAR [®]		DATE
PATENT INFORMATION http://www.stellarindustries.com/ip		
MODEL NO.	SERIAL NO.	
MADE IN THE U.S.A. BY STELLAR INDUSTRIES, INC. PN C5942		

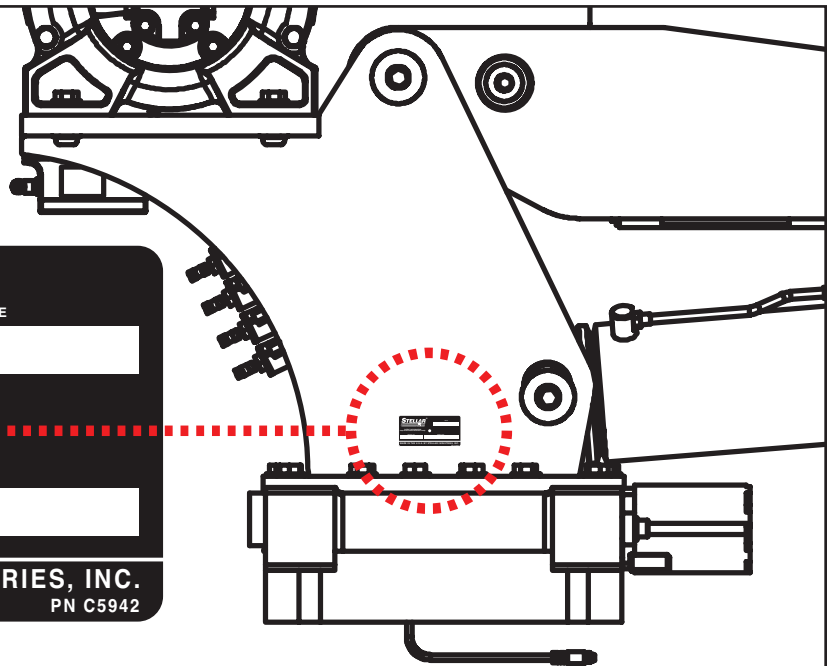


Table of Contents

Introduction	ii
Chapter 1 - Specifications	1
Specifications	2
Capacity Chart - Decal PN 42817	3
Chapter 2 - Installation	5
General Installation	6
Installer Notice	6
Torque Data Chart	7
Torquing Information & Warnings	7
Installation Overview	8
EC3200 Aluminum Mounting Detail	9
Flatbed Body Reinforcement	9
EC3200 Aluminum Installation Drawing	10
Hydraulic Kit - PN 93872	12
Hydraulic Kit - PN 93872 Parts List	13
Valve Bank Drawing	14
Control Kit - PN 42804	16
Control Kit - PN 42804 Parts List	17
EC3200 Aluminum Wiring Diagram (Two Battery)	18
EC3200 Aluminum Wiring Diagram (One Battery)	19
Electrical Circuit Grounding	20
Stability Procedure	21
Decal Kit Placement - PN 100112	22
Chapter 3 - Drawing Assembly	23
Base Assembly - PN 42525	24
Base Assembly - PN 42525 Parts List	25
Base Assembly (Narrow Version) - PN 44613	26
Base Assembly (Narrow Version) - PN 44613 Parts List	27
Mast Assembly - PN 42787	28
Mast Assembly - PN 42787 Parts List	29
Power Unit Assembly - PN 42513	30
Power Unit Assembly - PN 42513 Parts List	31
Winch DC 1600 W/65 FT Rope - PN 106133	32
Winch DC 1600 W/65 FT Rope - PN 106133 Parts List	33
Main Boom Assembly - PN 90396	34
Main Boom Assembly - PN 90396 Parts List	35
Extension Boom Assembly - PN 90397	36
Extension Boom Assembly - PN 90397 Parts List	37
Snatch Block Assembly - PN 82652	38
Snatch Block Assembly - PN 82652 Parts List	39
Boom Support Assembly - PN 95153	40
Radio Transmitter Assembly - PN 67894	41

Introduction

A copy of this manual is provided with every crane and can be found in the hard plastic manual case that is installed on the chassis. A copy of this manual shall remain with the crane at all times.

Throughout the manual, three signal words will be used to bring attention to important items:

NOTICE

A NOTICE signal word indicates a practice not related to physical injury.

⚠ WARNING

A WARNING signal word indicates a hazardous situation which, if not avoided, could result in death or serious injury.

⚠ DANGER

A DANGER signal word indicates a hazardous situation which, if not avoided, will result in death or serious injury.

Information contained within this manual does not cover operation, maintenance, or troubleshooting. Please refer to the General EC Crane Manual for details on these items.

This manual is not binding. Stellar Industries, Inc. reserves the right to change, at any time, any or all of the items, components, and parts deemed necessary for product improvement or commercial/production purposes. This right is kept with no requirement or obligation for immediate mandatory updating of this manual.

If more information is required or technical assistance is needed, or if you feel that any part of this manual is unclear or incorrect, please contact the Stellar Customer Service Department by phone at 800-321-3741 or email at service@stellarindustries.com.

**For Technical Questions, Information, Parts, or Warranty, Call Toll-Free at
800-321-3741**

Hours: Monday - Friday, 8:00 a.m. - 5:00 p.m. CST

Or email at the following addresses:

Technical Questions, and Information

service@stellarindustries.com

Order Parts

parts@stellarindustries.com

Warranty Information

warranty@stellarindustries.com

Chapter 1 - Specifications

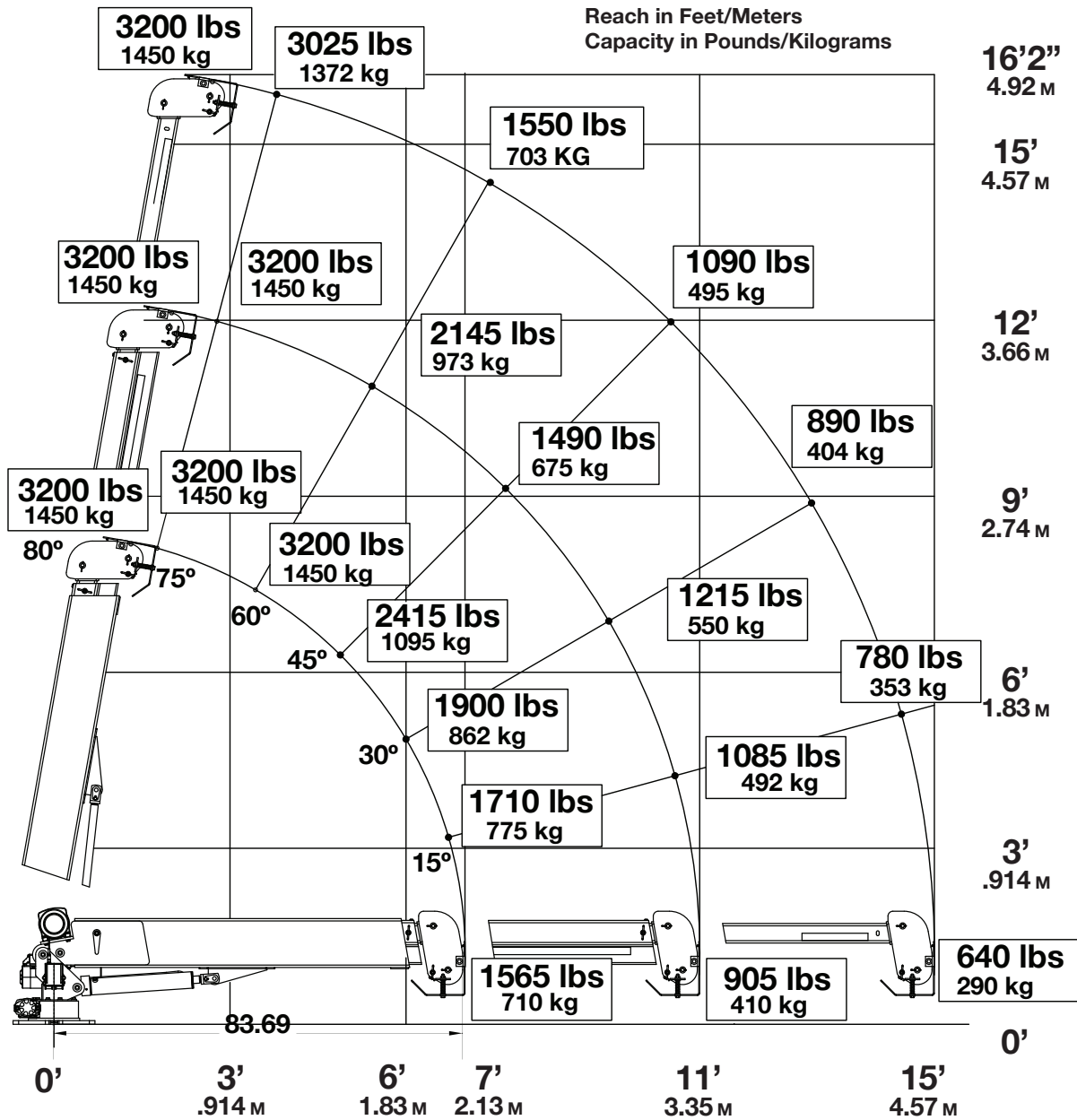
Chapter Contents

Model 7630 Specifications	2
Capacity Chart - Decal PN 118556	3
Dimensional Drawing 1	4
Dimensional Drawing 2	5

Specifications

SPECIFICATIONS 3200 LW	
CRANE RATING*	11,500 ft-lb (1.59 TM)
STANDARD BOOM LENGTH	7' (2.13 m) from CL of Crane
BOOM EXTENSION:	1ST STAGE: HYDRAULIC 48" (121.9 cm)
	2ND STAGE: MANUAL 48" (121.9 cm)
MAXIMUM HORIZONTAL REACH:	15' (4.57 m) FROM CL OF CRANE
MAXIMUM VERTICAL LIFT (FROM CRANE BASE)	16' 2" (4.93 m)
STOWED HEIGHT (CRANE ONLY)	24.7" (63.0 cm)
REQUIRED MOUNTING SPACE	18" x 15" (45.7 x 38.1 cm)
APPROXIMATE CRANE WEIGHT	500 LBS (227 kg)
CONTROLS	RADIO CONTROL STANDARD FOR ALL FUNCTIONS.
BOOM ELEVATION	-5° TO +80°
WINCH SPECIFICATIONS	
ROPE LENGTH:	65 FT (19.8 m)
ROPE DIAMETER	7/32" (.56 cm)
LINE PULL SPEED:	15 FT/MIN (4.6 m/min)
MAX. SINGLE PART LINE:	1,600 LBS (725 kg)
MAX. DOUBLE PART LINE	3,200 LBS (1450 kg)
ROTATION (WORM GEAR):	410 DEGREE POWER
LIFTING CAPACITY:	1625 LBS @ 7' (737 kg @ 2.1 m)
	905 LBS @ 11' (410 KG @ 3.35 M)
	640 LBS @ 15' (290 kg @ 4.6 m)
POWER SUPPLY:	12 VOLT POWER UNIT (2.0 GPM @ 2600 PSI) (7.57 lpm @ 179 Bar)
SUBJECT TO CHANGE WITHOUT NOTIFICATION	

Capacity Chart - Decal PN 42817



Weight of load handling devices are part of the load lifted and must be deducted from the capacity.

Maximum 1 - part line capacity is 1600lbs (725kg). For greater loads, use 2 - part line.



PN 42817

This page left intentionally blank.

Chapter 2 - Installation

Chapter Contents

General Installation	8
Installer Notice	8
Torque Data Chart.....	9
Installation Overview.....	10
Installation Overview - Continued	11
Control Kit - PN 118530	12
Control Kit - PN 118530 Parts List	13
Electrical Circuit Grounding.....	14
Valve Bank - PN 125254	16
Valve Bank - PN 125254 Parts List.....	17
Alternate Valve Bank - PN 44530.....	18
Alternate Valve Bank - PN 44530 Parts List.....	19
Hydraulic Kit - PN 107780.....	20
Hydraulic Kit - PN 107780 Parts List.....	21
Hydraulic Installation.....	22
Winch Case Drain Installation	23
Hydraulic System	24
Face Seal/O-Ring Size Chart.....	24
Stability Procedure	25
Crane Load Level Indicator	26
Decal Placement - PN 117183	27

General Installation

This chapter is designed to serve as a general guide for the installation of a EC3200 Aluminum crane. Each installation is considered unique so certain portions of this chapter may or may not apply to your direct application. If a question should arise during the installation process, please contact Stellar Customer Service at (800) 321 3741.

It is the installer's responsibility to assure that the crane is mounted on a platform that will support the maximum crane rating of this crane.

⚠ WARNING Do not install this crane on a body not capable of handling the loads imposed on it. Failure to do so may result in serious injury or death.

NOTICE When installing welder units to the service bodies, it is highly recommended that a surge protector is installed on the chassis batteries to protect the crane radio receiver, wiring and other electronic devices from an unexpected electrical spike or surge. Failure to do so could result in extensive damage to the service body and crane electrical circuit.

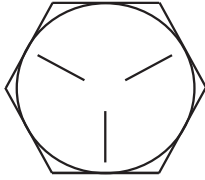
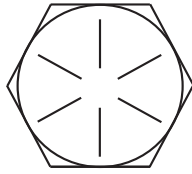
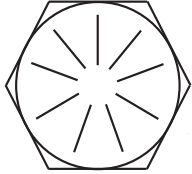
Installer Notice

According to Federal Law (49 cfr part 571), each final-stage manufacturer shall complete the vehicle in such a manner that it conforms to the standards in effect on the date of manufacture of the incomplete vehicle, the date of final completion, or a date between those two dates. This requirement shall, however, be superseded by any conflicting provisions of a standard that applies by its terms to vehicles manufactured in two or more stages.

Therefore, the installer of Stellar® Cranes and Bodies is considered one of the manufacturers of the vehicle. As such a manufacturer, the installer is responsible for compliance with all applicable federal and state regulations. They are required to certify that the vehicle is in compliance with the Federal Motor Vehicle Safety Standards and other regulations issued under the National Traffic and Motor Vehicle Safety Act.

Please reference the Code of Federal Regulations, title 49 - Transportation, Volume 5 (400-999), for further information, or visit <http://www.gpoaccess.gov/nara/index.html> for the full text of Code of Federal Regulations.

Torque Data Chart

		GRADE 5		GRADE 8		GRADE 9
						
SIZE (DIA - TPI)	BOLT DIA (INCHES)	PLAIN (FT-LB)	PLATED (FT-LB)	PLAIN (FT-LB)	PLATED (FT-LB)	PLATED (FT-LB)
5/16-18	0.3125	17	13	25	18	22
3/8-16	0.3750	31	23	44	33	39
7/16-14	0.4375	49	37	70	52	63
1/2-13	0.5000	75	57	105	80	96
9/16-12	0.5625	110	82	155	115	139
5/8-11	0.6250	150	115	220	160	192
3/4-10	0.7500	265	200	375	280	340
7/8-9	0.8750	395	295	605	455	549
1-8	1.000	590	445	910	680	823
1 1/8-7	1.1250	795	595	1290	965	1167
1 1/4-7	1.2500	1120	840	1815	1360	1646
1 3/8-6	1.3750	1470	1100	2380	1780	2158
1 1/2-6	1.500	1950	1460	3160	2370	2865

Torquing Information & Warnings

⚠ WARNING When using the torque data in the chart, the following rules should be observed:

- **Bolt manufacturer's** particular specifications should be consulted when provided.
- **Flat washers** of equal strength must be used.
- **All torque measurements** are given in foot-pounds. To convert to inch-pounds, multiply by 12.
- **Torque values** specified are for bolts with residual oils or no special lubricants* applied. If special lubricants of high stress ability, such as Never-Seez compound graphite and oil, molybdenum disulphite, colloidal copper or white lead are applied, multiply the torque values in the charts by the factor .90. The use of Loctite does not affect the torque values listed above.
- **Torque values** for socket-head capscrews are the same as for Grade 8 capscrews.
- **Do not use these values** if a different torque value or tightening procedure is given for a specific application. Torque values listed are for general use only. Check tightness of fasteners periodically.
- **Sheer bolts** are designed to fail under predetermined loads. Always replace shear bolts with identical grade.
- **Fasteners** should be replaced with the same or higher grade. If higher grade fasteners are used, these should only be tightened to the strength of the original.
- **Tighten** plastic insert or crimped steel-type lock nuts to approximately 110 percent of the dry torque values shown in the chart on page 8, applied to the nut, not to the bolt head. Tighten toothed or serrated-type lock nuts to the full torque value.

NOTICE

**Lubricated means coated with a lubricant such as engine oil, or fasteners with phosphate and oil coatings. "Dry" means plain or zinc plated without lubrication. Tighten lubricated bolts to approximately 80% of dry bolts.*

Installation Overview

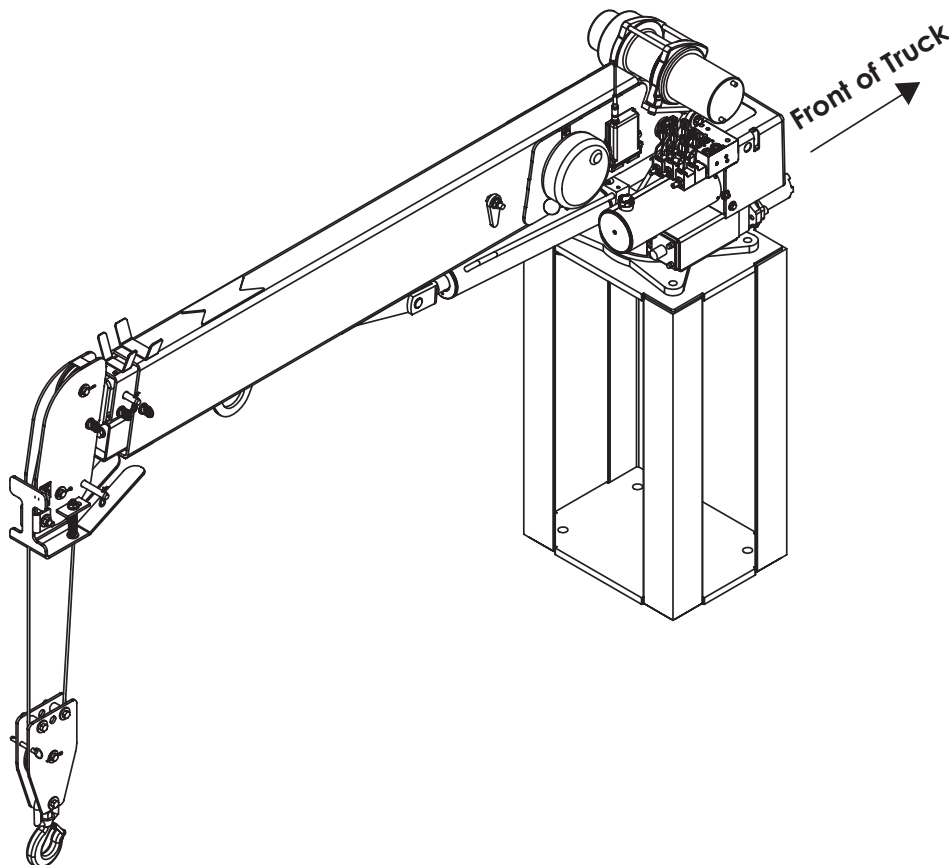
1. Determine that the mounting location for the EC3200 Aluminum crane is at least 18" x 15" (45.7 x 38.1 cm).
2. Use the detail on the following page to drill .938" diameter holes into the mounting plate. Run tap on the threads of the base to be sure they are clean.
3. Use a crane or lifting device capable of lifting the weight of the Stellar crane. The Stellar EC3200 Aluminum crane weighs approximately 550 lbs (250 kg). Note: cranes are shipped with rotation positioned at 180 degrees from normal stowed travel position. This will allow for easy installation of the crane and permanent connection of all hydraulic and electrical components prior to repositioning into the crane saddle.
4. Connect straps from the lifting device to the main boom of the Stellar EC3200 Aluminum crane.

⚠ WARNING When connecting straps to boom, make sure not to damage boom.

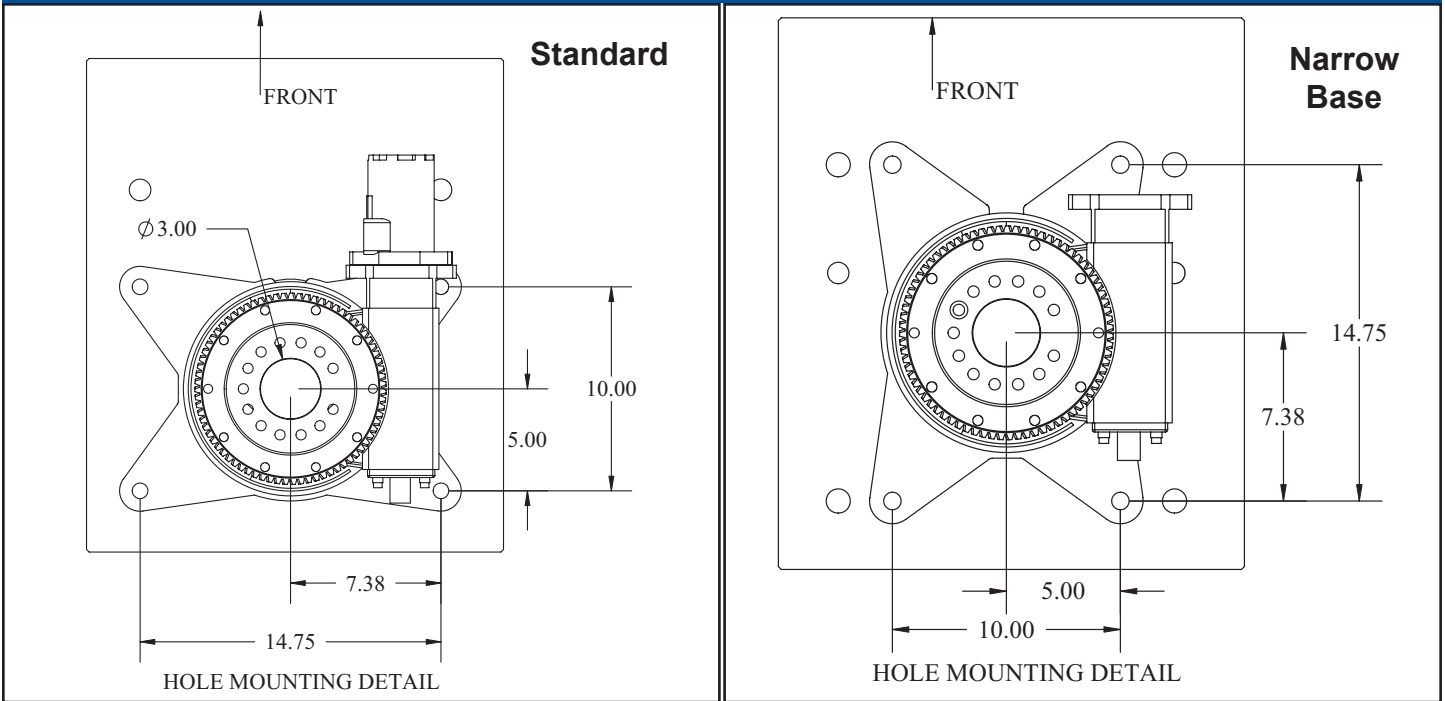
5. Use four (4) 7/8" x 1.75" Grade 8 bolts and four (4) 7/8" Grade 8 flat washers.
6. Install a washer on each bolt.
7. Apply Loctite Thread locker #277 to the bolts.
8. Using the lifting device, lower the Stellar EC3200 Aluminum crane just above the crane compartment and start the bolts. Have someone assist in leveling the crane.
9. Secure the crane using the mounting hardware provided. **Note: longer or shorter bolts may be required – recommended thread engagement into crane base is 0.75" – use grade 8, zinc plated bolts only.**
10. Torque the bolts to 455 ft-lbs.
11. Remove supporting crane.
12. Hook-up hydraulics and electrical using the schematics provided at the end of this chapter.

⚠ WARNING Do not expose aluminum crane booms to temperatures above 350 degrees Fahrenheit.

Note: If questions should arise during any portion of this installation, please contact Stellar Customer Service at (800) 321-3741.

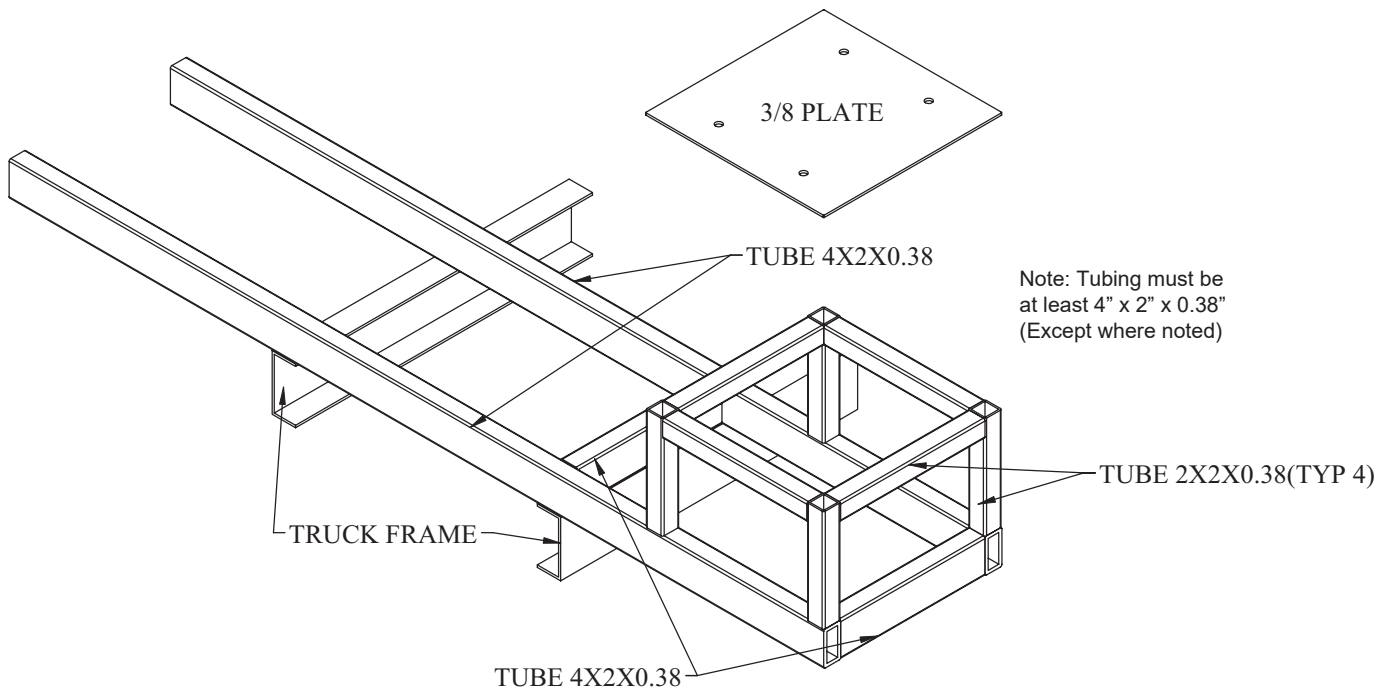


EC3200 Aluminum Mounting Detail

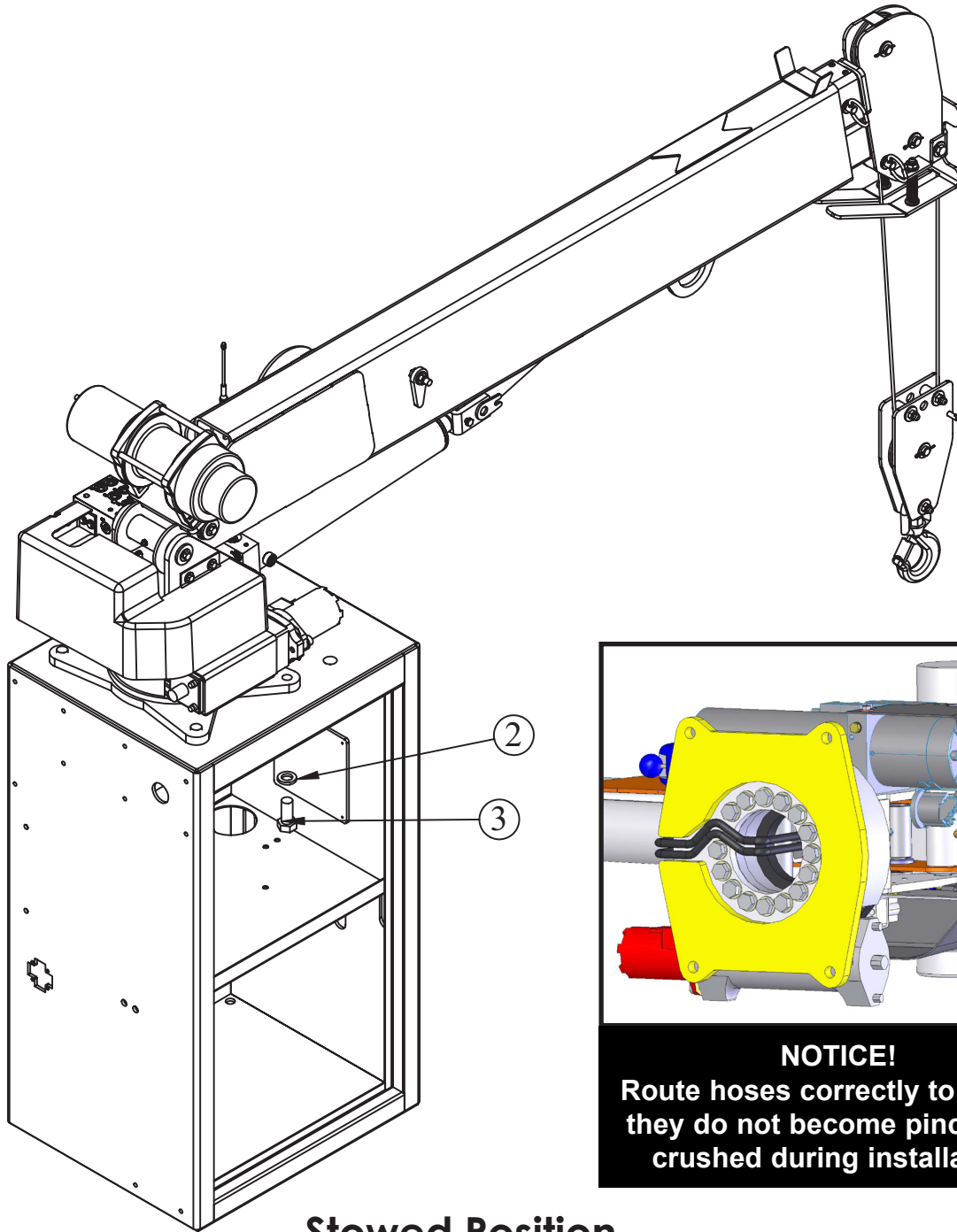


Flatbed Body Reinforcement

If it has been determined that the destination body won't support the crane with a fully rated load, the body must be reinforced. Use 1/4" fillet welds and an AWS qualified welder to proceed as shown in this drawing:



EC3200 Aluminum Installation Drawing



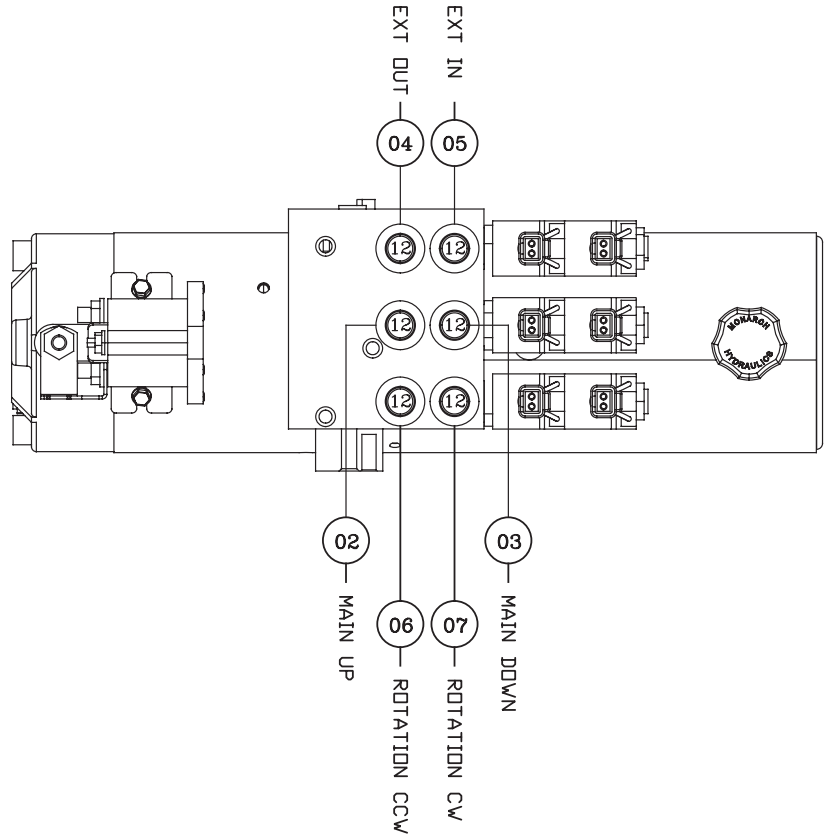
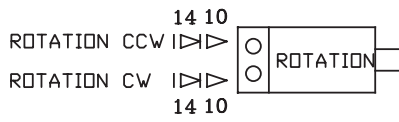
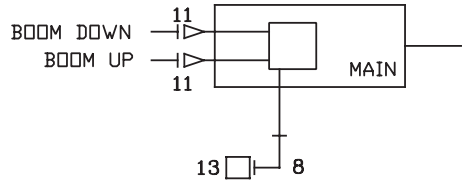
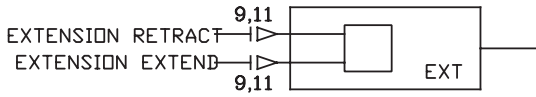
Stowed Position

ITEM	PART No.	DESCRIPTION	QTY.
02	8648	WASHER 0.88 SAE FLAT YELLOW GR8	4
03	42985	CAP SCR 0.88-9X1.75 HHGR8	4

NOTE:
STABILITY DECAL P/N 16881 IS PART OF THIS KIT

This page left intentionally blank.

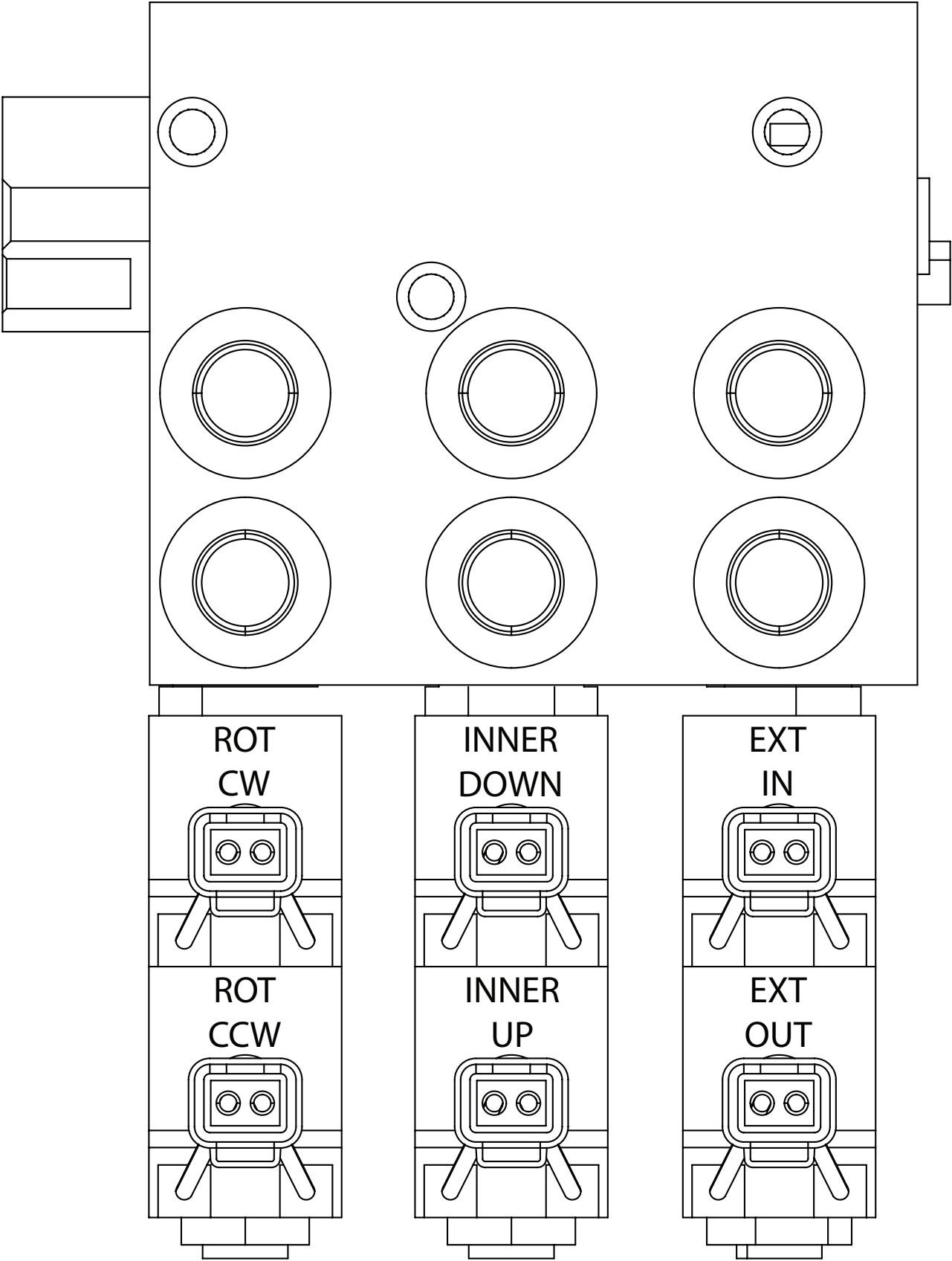
Hydraulic Kit - PN 93872



Hydraulic Kit - PN 93872 Parts List

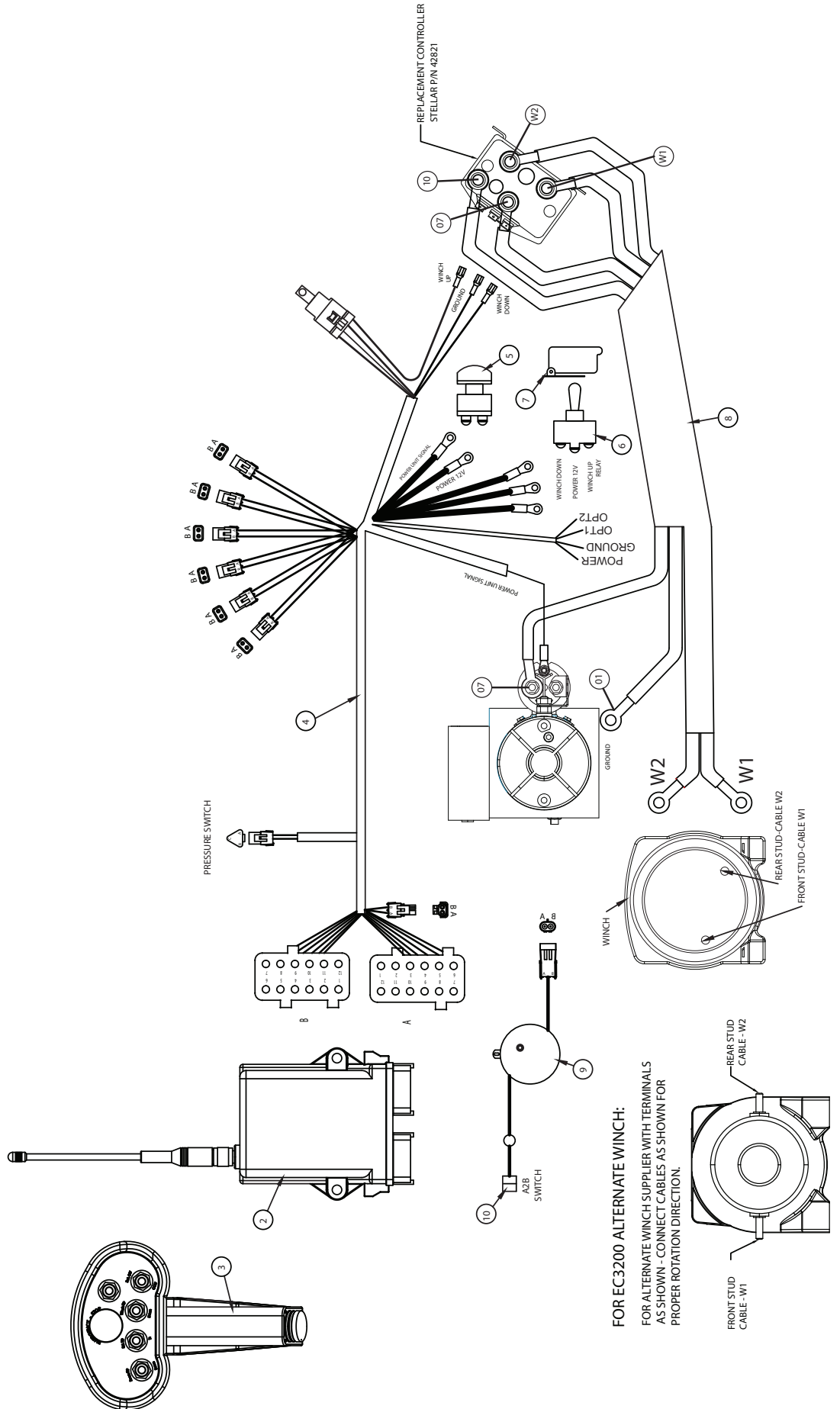
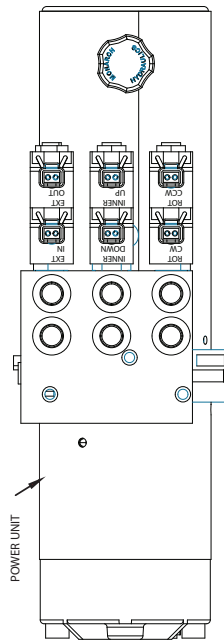
PN 93872			
ITEM	PART	DESCRIPTION	QTY
01	42800	HOSE KIT EC3200 (INCL:2-7)	1
02	42980	HOSE-HYD .25 X 22	1REF
03	42983	HOSE-HYD .25 X 23	1REF
04	42981	HOSE-HYD .25 X 19	1REF
05	43847	HOSE-HYD .25 X 20	1REF
06	42982	HOSE-HYD .25 X 23	1REF
07	42984	HOSE-HYD .25 X 43	1REF
08	3861	FTG 6-6 MAORB-FORB 90	1
09	93871	FTG 4-4 MFS-FFSS 45	2
10	C1111	FTG 10-6 MORB-FORB STRAIGHT REDUCER	2
11	D1291	FTG 4-4 MFS-MORB STRAIGHT	4
12	C4922	FTG 4-6 MFS-MORB STRAIGHT	6
13	49314	SWITCH PRES OVERLD CD-LLC-2600R/WD	1
14	108534	FTG 4-6 MFS-MORB STRAIGHT .046 ORIFICE BLK	2
REV. B			

Valve Bank Drawing

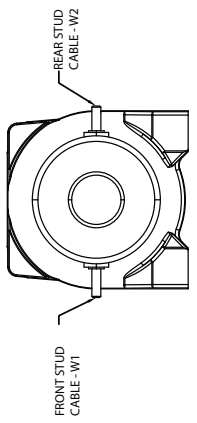


This page left intentionally blank.

Control Kit - PN 42804



FOR EC3200 ALTERNATE WINCH:
 FOR ALTERNATE WINCH SUPPLIER WITH TERMINALS AS SHOWN - CONNECT CABLES AS SHOWN FOR PROPER ROTATION DIRECTION.



Control Kit - PN 42804 Parts List

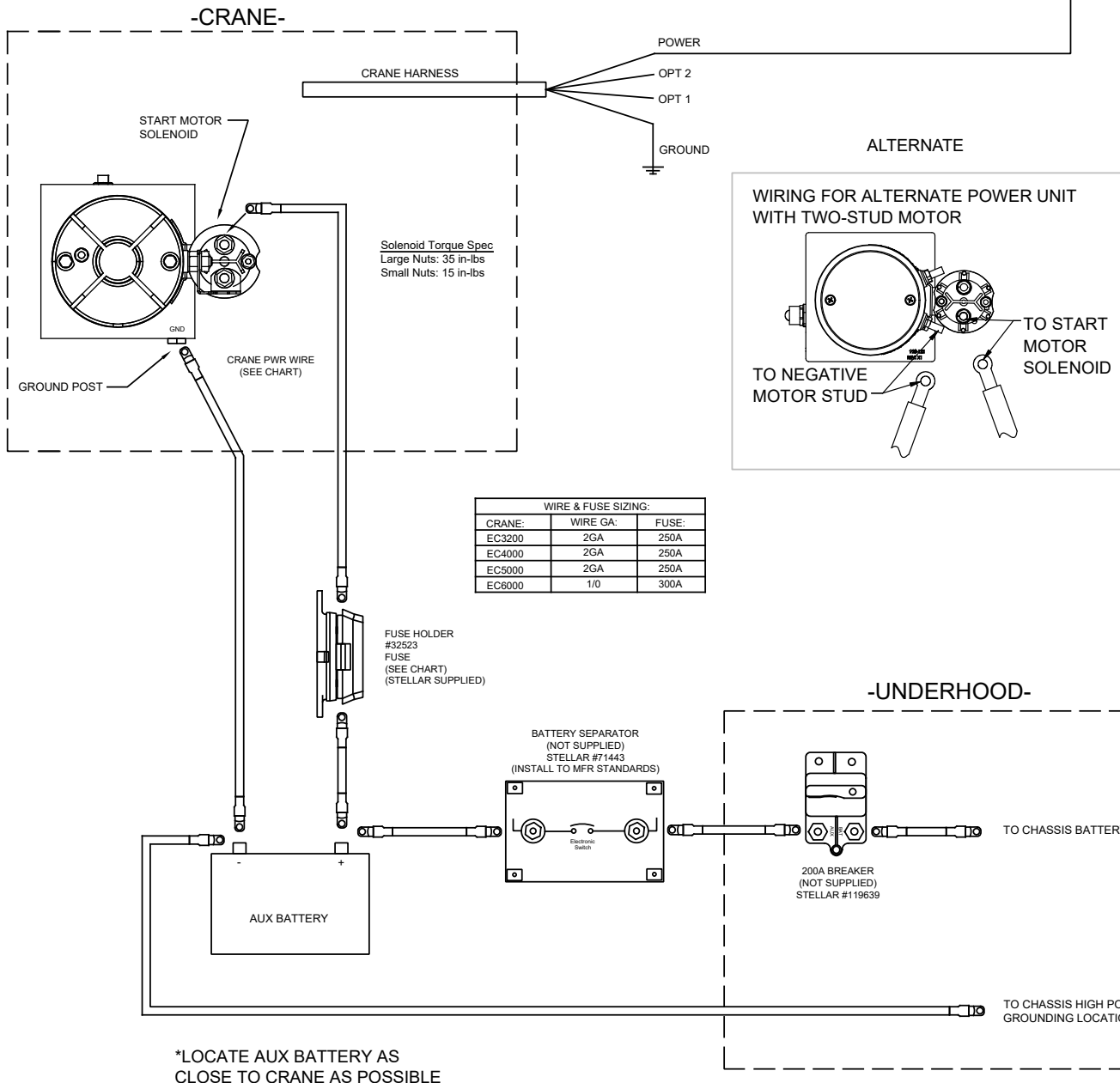
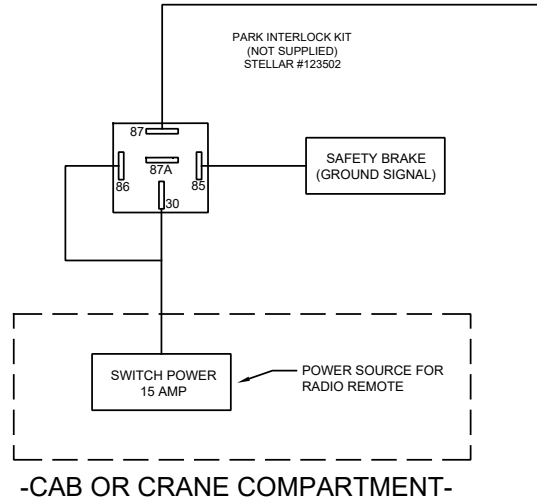
PN 42804			
ITEM	PART	DESCRIPTION	QTY
01	39784	RADIO CNTRL ASM 5 FCTN ON/OFF	1
02	—	RECEIVER-RADIO (PART OF 1)	REF
03	67894	TRANSMITTER-RADIO (PART OF 1)	1
04	42805	WIRE HARNESS EC3200	1
05	17771	SWITCH PUSH BUTTON 9216-03	1
06	47410	SWITCH MOM SPST 20A	1
07	47409	COVER SWITCH EC3200	1
08	47092	WIRE HARNESS EC3200 CONTROLLER	REF
09	72602	CORD REEL ASM 15/20/21 FT CRANE	REF
10	35105	SWITCH LIMIT (NO) ROLLER LVR LT BRKT	1
REV. C			

NOTES:

P/N 47092 INCLUDES HARNESS & WINCH CONTROLLER

EC3200 Wiring Diagram (Two Battery)

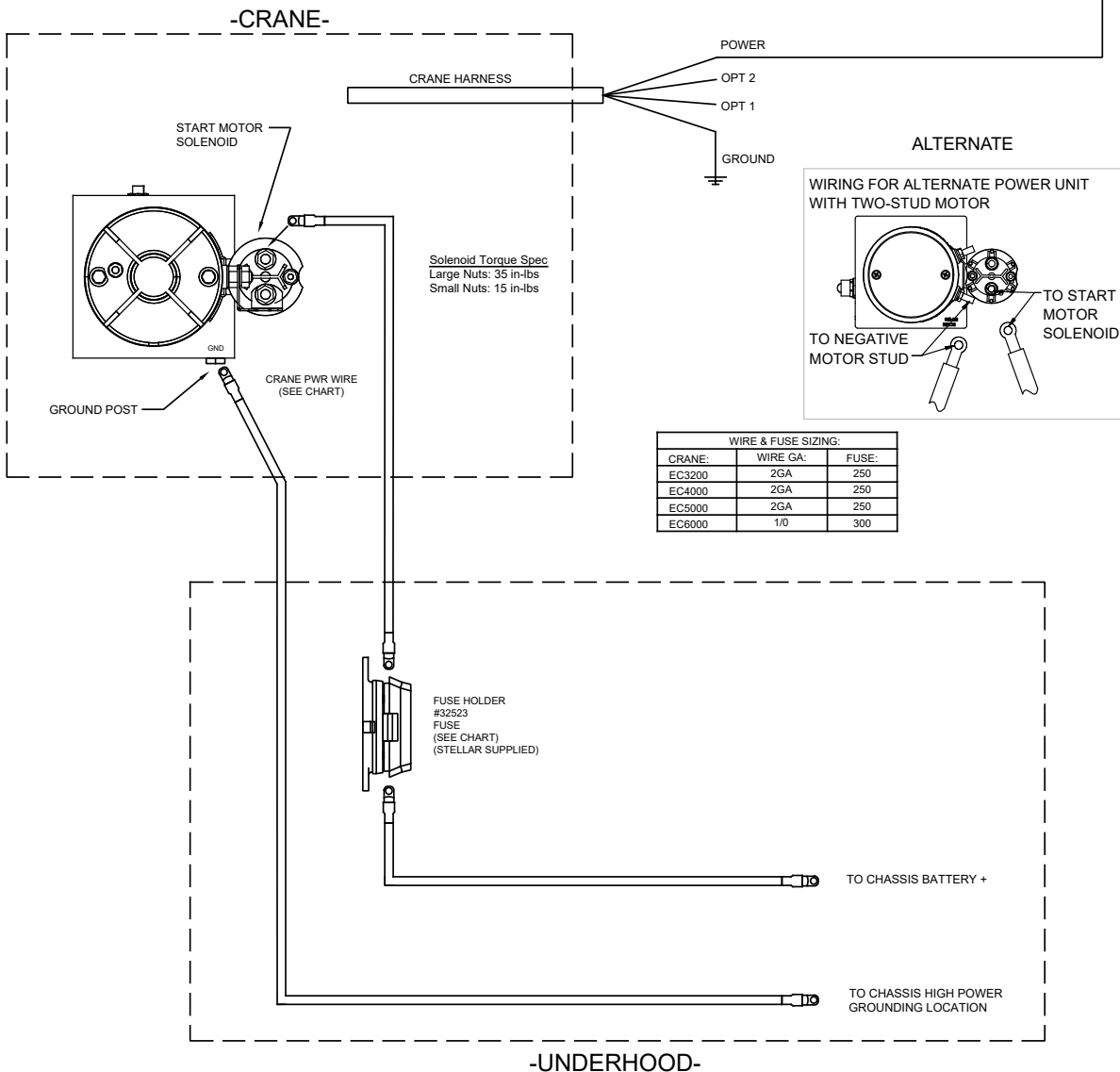
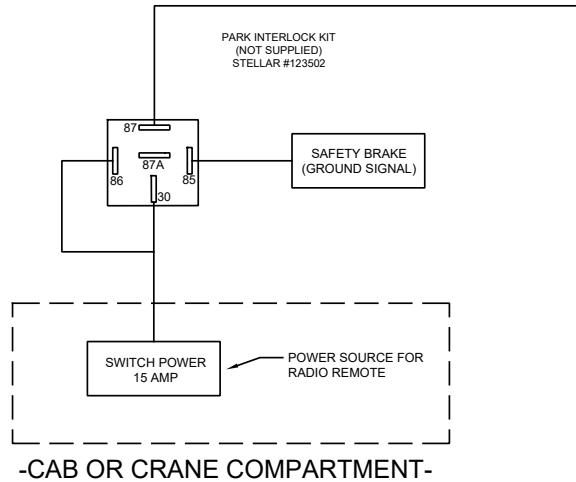
NOTICE Operating the crane without the truck engine running could allow the truck battery to be discharged below levels required for starter cranking power.



*LOCATE AUX BATTERY AS CLOSE TO CRANE AS POSSIBLE

EC3200 Wiring Diagram (One Battery)

NOTICE Operating the crane without the truck engine running could allow the truck battery to be discharged below levels required for starter cranking power.



Electrical Circuit Grounding

When installing the crane, always locate a good source for grounding the circuit. A majority of electrical failures are due to poor grounding. Poor grounding can cause intermittent operation of the equipment, electrical component failures and cause the equipment to not operate at all.

Chassis manufacturers usually will have a ground strap which ties into the truck frame from the battery, but it is always a good idea to check each individual model to verify where the ground is located. Never use the mechanic body as a ground source. Make sure the electrical grounds are routed to either the chassis frame rail or the chassis's main grounding source.

Stellar provides a stud (PN 40992) for grounding the crane to the chassis frame rail:



Inside Frame Rail



Outside Frame Rail

• Drill the hole to the frame rail in accordance with the chassis body builder's guide.

⚠ WARNING

- Hole size: 21/64"
- The hole location should allow for the shortest length of ground wire while keeping enough slack for flexibility.
- Be sure to grind the frame rail around the hole to ensure a proper ground connection.
- Frame rail thickness may require additional flat washers (as shown).
- Use an electrical coating on hardware to prevent corrosion.

Stability Procedure

Definition of Stability for the Stellar Telescopic Crane Products:

A truck is stable until the load cannot be lifted off the ground with the winch, without tipping over the truck. Every Stellar crane installed must be tested for stability to determine the actual load capacity of the final truck package. The actual test data must be recorded and supplied with the truck at the time of in-service and should be kept with the truck at all times. The following procedure will test the truck package for stability and will provide a stability capacity chart. The load limit information shown on the stability capacity chart is formulated on 85% tipping.

Set Up:

1. Locate the truck on a test course in position for loading and engage travel brakes.
2. Set stabilizers so that they make contact with firm, level footings.
3. Operate the crane under partial load to assure operator proficiency and proper machine function.

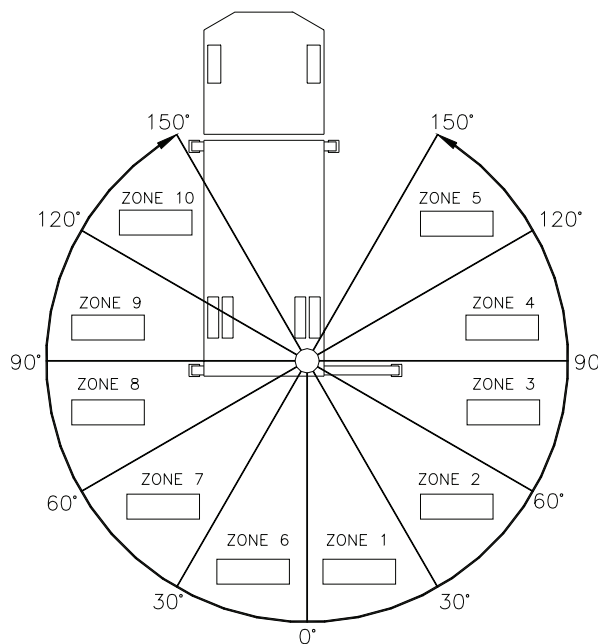
EC3200 Aluminum Stability Data

Max Horizontal Reach: 180" (From the center of rotation to boom tip)

Stability Test Weight: 755 lbs.

Test Procedure

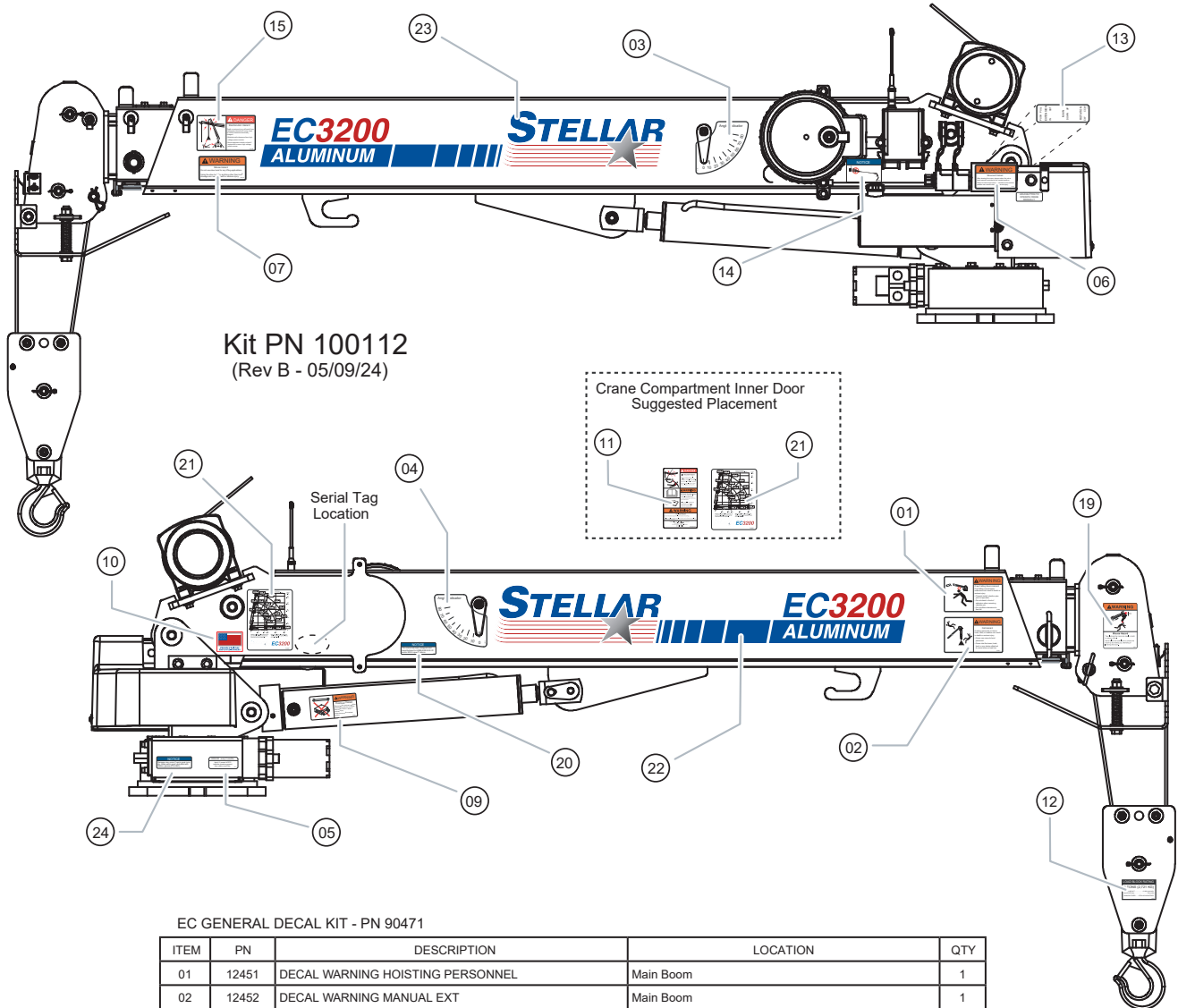
1. Rotate the crane into Zone 1 position.
2. With the crane fully retracted and the boom horizontal, winch the test weight off the ground.
Note: Keep weight within six inches of the ground at all times.
3. Extend the boom outward until full extension has been reached or until the truck becomes unstable (Again, use the winch to keep the weight within six inches of the ground.)
4. If the boom goes full extension without becoming unstable, the crane is termed stable for this zone and 100% can be written in the Zone 1 data box.
5. If the truck becomes unstable prior to going full extension, retract the boom until the truck becomes stable and measure the horizontal reach in this position (center of rotation to boom tip). This is the stable horizontal reach for this zone. Stable horizontal reach divided by Maximum horizontal reach multiplied by 100 equals the percentage of rated capacity for this zone. Use the following formula to determine the percentage of rated capacity:



$$\frac{\text{Stable Horizontal Reach}}{\text{Max Horizontal Reach}} \times 100 = \text{Percentage of Rated}$$

6. Record this number in the data box for Zone 1. This is the revised capacity due to stability for this zone.
7. Repeat this procedure for each zone until the worksheet is completed.
8. This is the revised capacity based on stability of this package.

Decal Kit Placement - PN 100112



Kit PN 100112
(Rev B - 05/09/24)

EC GENERAL DECAL KIT - PN 90471

ITEM	PN	DESCRIPTION	LOCATION	QTY
01	12451	DECAL WARNING HOISTING PERSONNEL	Main Boom	1
02	12452	DECAL WARNING MANUAL EXT	Main Boom	1
03	13819	DECAL ANGLE INDICATOR SS	Main Boom	1
04	13820	DECAL ANGLE INDICATOR CS	Main Boom	1
05	15171	DECAL GREASE WORM	Crane Base	1
06	18472	DECAL MANUAL OPERATION	Power unit cover	1
07	24712	DECAL WARNING STOW HOOK	Crane Boom above stow hook	1
08	25159	DECAL WARNING MANUAL OVERRIDES	Valve Bank	1
09	28256	DECAL WARNING OVERLOAD DEVICE	Main Cylinder	1
10	35234	DECAL STELLAR MADE IN THE USA	Main Boom	1
11	93936	DECAL SAFETY & SERVICE MECH BODY DOOR	Crane Compartment	1
12	116437	DECAL SNATCH BLOCK 3 TON	Snatch Block	1
13	42820	DECAL VB CONTROL EC SERIES	On top of valve bank	1
14	73929	DECAL PRESSURE WASH	Main Boom	1
15	C1179	DECAL DANGER ELECTROCUTION SMALL	Main Boom	1
16*	C4545	DECAL DANGER ELECTROCUTION LARGE	Four corners of the body/chassis	4
17*	C5910	DECAL STELLAR 4x9.5	Suggested: Rear body/tailgate	1
18*	C5911	DECAL STELLAR 2x4.5	Suggested: Side corners of body	3

EC3200 ALUM DECAL KIT - PN 100111

ITEM	PN	DESCRIPTION	LOCATION	QTY
19	12300	DECAL WARNING TWO BLOCKING	Crane Horse Head	1
20	15172	DECAL ASME/ANSI B30.22/B30.5	Main Boom	1
21	42817	DECAL CAPACITY EC3200	Main Boom and Crane Compartment	2
22	100109	DECAL IDENTIFICATION EC3200 CS	Main Boom	1
23	100110	DECAL IDENTIFICATION EC3200 SS	Main Boom	1
24	9188	DECAL ROTATE/GREASE	Crane Base	1

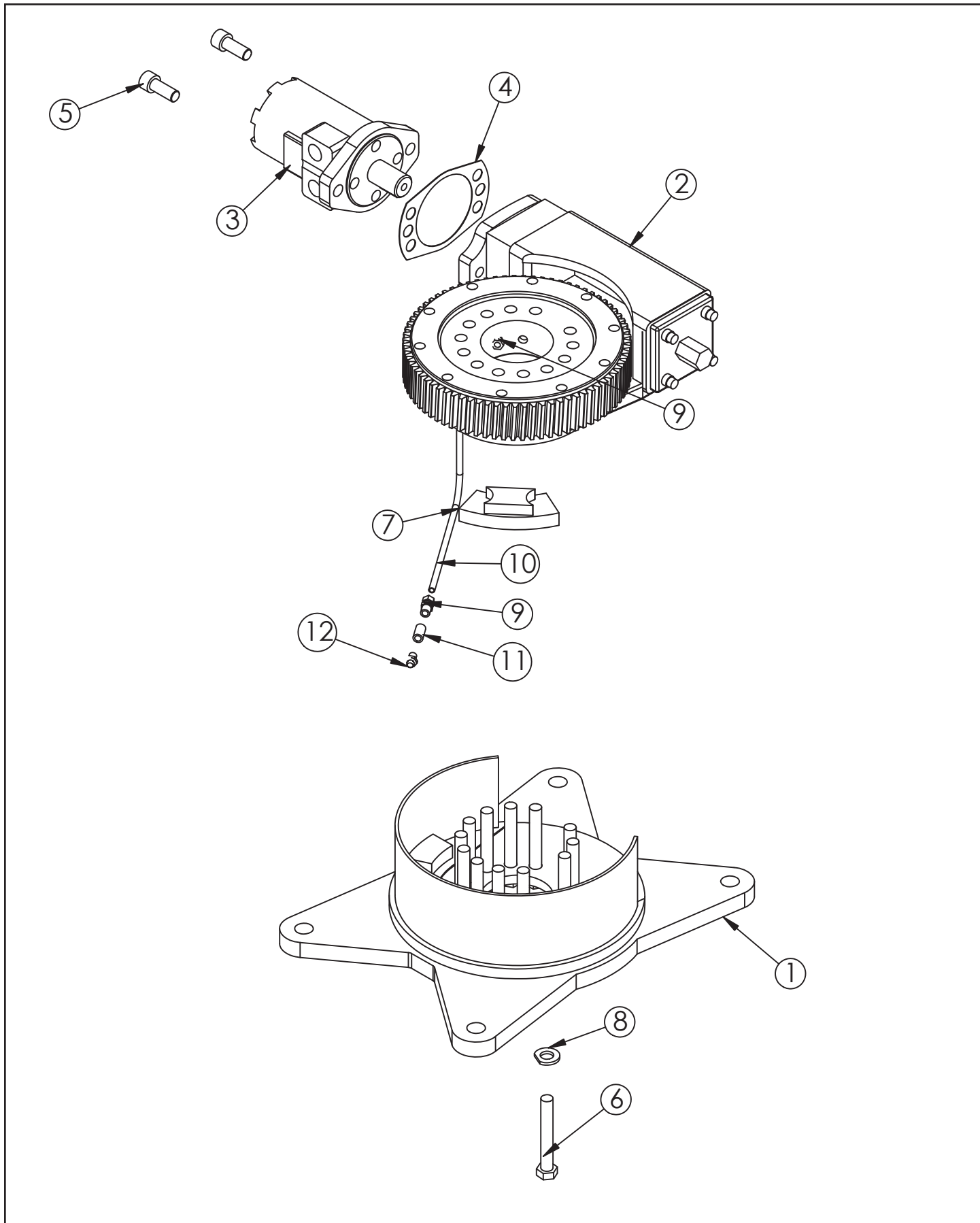
*Not Shown

Chapter 3 - Drawing Assembly

Chapter Contents

Base Assembly - PN 42525	24
Base Assembly - PN 42525 Parts List	25
Base Assembly (Narrow Version) - PN 44613	26
Base Assembly (Narrow Version) - PN 44613 Parts List	27
Mast Assembly - PN 42787	28
Mast Assembly - PN 42787 Parts List	29
Power Unit Assembly - PN 42513	30
Power Unit Assembly - PN 42513 Parts List	31
Winch DC 1600 W/65 FT Rope - PN 106133	32
Winch DC 1600 W/65 FT Rope - PN 106133 Parts List	33
Main Boom Assembly - PN 90396	34
Main Boom Assembly - PN 90396 Parts List	35
Extension Boom Assembly - PN 90397	36
Extension Boom Assembly - PN 90397 Parts List	37
Snatch Block Assembly - PN 82652	38
Snatch Block Assembly - PN 82652 Parts List	39
Boom Support Assembly - PN 95153	40
Radio Transmitter Assembly - PN 67894	41

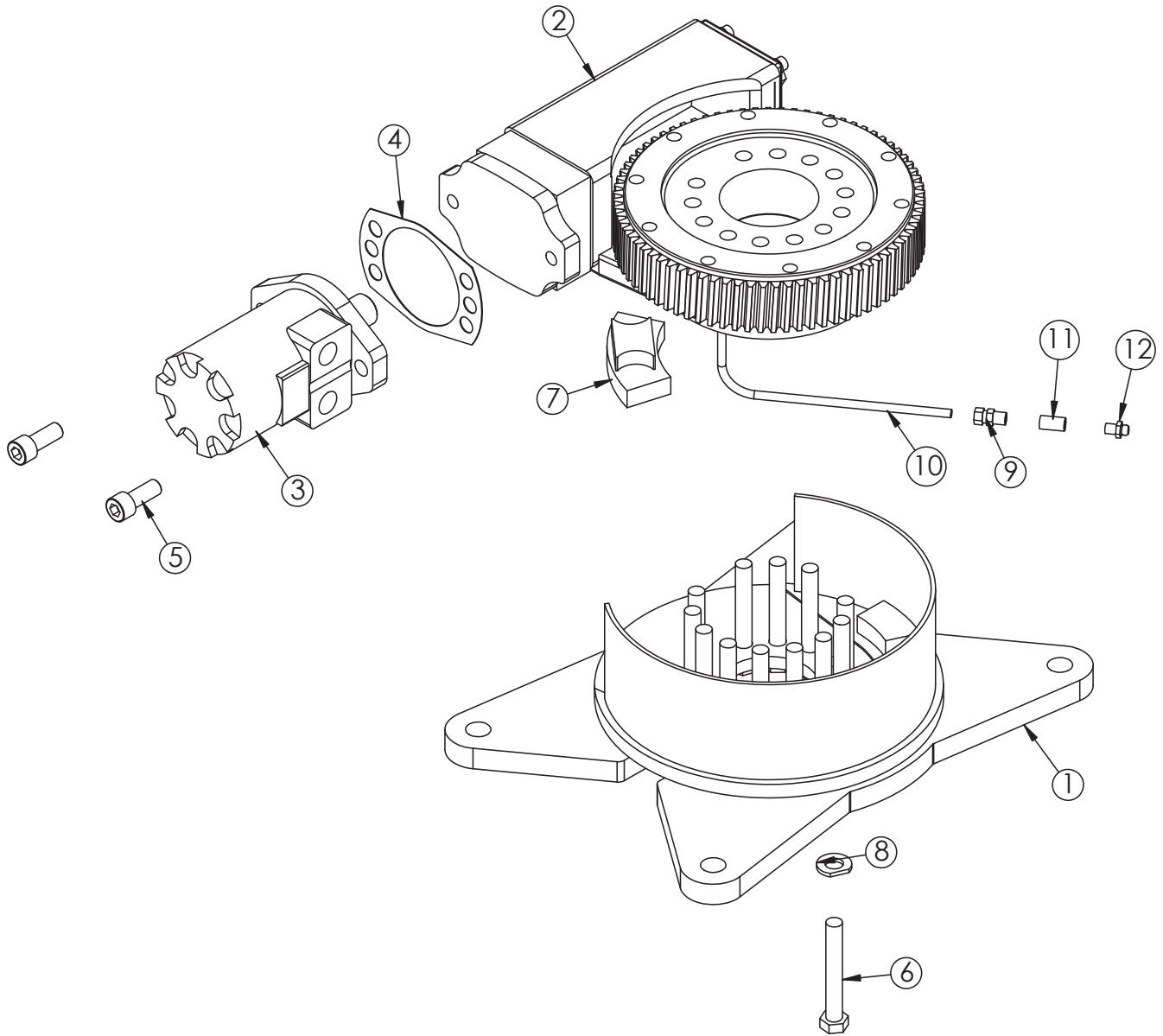
Base Assembly - PN 42525



Base Assembly - PN 42525 Parts List

PN 42525			
ITEM	PART	DESCRIPTION	QTY
1	42784	BASE EC3200	1
2	41640	BEARING SWING DRIVE 170-00058-1	1
3	109358	MOTOR 50CC 1 IN KEYED ROT FLANGE PNT BLK	1
4	21151	GASKET MOTOR 008-10056-1	1
5	D1307	CAP SCR 0.50-13X1.25 SHGR8 W/ RED PATCH	2
6	30750	CAP SCR 0.50-13X3.50 HHGR8	13
7	42795	STOP SLIDING EC3200	1
8	105771	WASHER 0.50 SAE FLAT YELLOW GR8 CLIPPED	13
9	D1345	FTG CPRSN 0.12NPT/0.25 TUBE	2
10	D1810	TBE AIR SAEJ844 TYPE A .25 (RM)	2.33
11	22161	FTG 2-2 FP-FP COUPLER STRAIGHT BRASS	1
12	56589	ZERK 1/8 NPT STRAIGHT LONG THREAD	1

Base Assembly (Narrow Version) - PN 44613



Base Assembly (Narrow Version) - PN 44613 Parts List

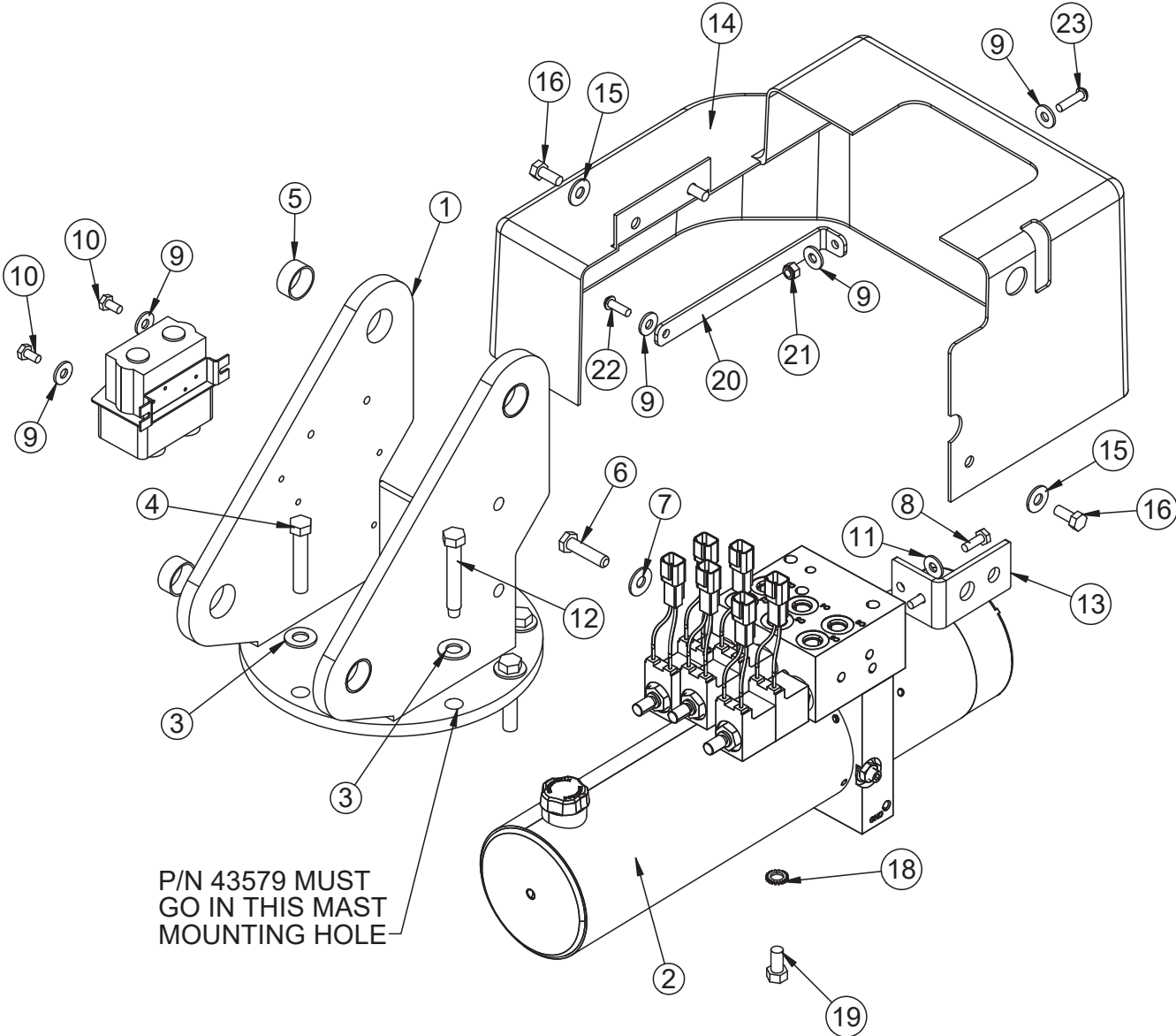
PN 44613

ITEM	PART	DESCRIPTION	QTY
1	44614	BASE EC3200 NARROW	1
2	41640	BEARING SWING DRIVE 170-00058-1	1
3	109358	MOTOR 50CC 1 IN KEYED ROT FLANGE PNT BLK	1
4	21151	GASKET MOTOR 008-10056-1	1
5	D1307	CAP SCR 0.50-13X1.25 SHGR8 W/ RED PATCH	2
6	30750	CAP SCR 0.50-13X3.50 HHGR8	13
7	42795	STOP SLIDING EC3200	1
8	105771	WASHER 0.50 SAE FLAT YELLOW GR8 CLIPPED	13
9	D1345	FTG CPRSN 0.12NPT/0.25 TUBE	2
10	D1810	TBE AIR SAEJ844 TYPE A .25 (RM)	2.33
11	22161	FTG 2-2 FP-FP COUPLER STRAIGHT BRASS	1
12	56589	ZERK 1/8 NPT STRAIGHT LONG THREAD	1
REV. E			

NOTES:

HARDWARE KITS: 92511, 96198

Mast Assembly - PN 42787



Mast Assembly - PN 42787 Parts List

PN 42787			
ITEM	PART	DESCRIPTION	QTY
1	42318	MAST EC3200	1
2	42513	POWER UNIT 12V EC3200	1
3	42788	WASHER 0.44 SAE FLAT YELLOW GR8	9
4	42789	CAP SCR 0.44-14X2.25 HHGR8 ZY	7
5	20362	BUSHING BPC16DXR08 1.00X.50	4
6	0345	CAP SCR 0.38-16X1.50 HHGR5	2
7	0346	WASHER 0.38 FLAT	2
8	0479	CAP SCR 0.25-20X0.75 HHGR5	2
9	D0917	WASHER 0.25 FLAT SS	6
10	0478	CAP SCR 0.25-20X0.50 HHGR5	3
11	0340	WASHER 0.25 FLAT	2
12	43579	CAP SCR 0.44-14X2.63 EC3200 STOP	1
13	47411	BRKT OVERRIDE BUTTON EC3200	1
14	44475	COVER EC3200 HDPE	1
15	0343	WASHER 0.31 USS FLAT ZINC	3
16	0420	CAP SCR 0.31-18X0.75 HHGR5	3
18	5870	WASHER 0.38 STAR EXTERNAL	1
19	0492	CAP SCR 0.38-16X0.75 HHGR5	1
20	51896	BRKT COVER EC CRANES	1
21	30659	NUT 0.25-20 HH NYLOC SS	1
22	C6021	CAP SCR 0.25-20X0.75 BTNHD SS	1
23	C6022	CAP SCR 0.25-20X1.00 BTNHD SS	1
REV. D			

NOTES:

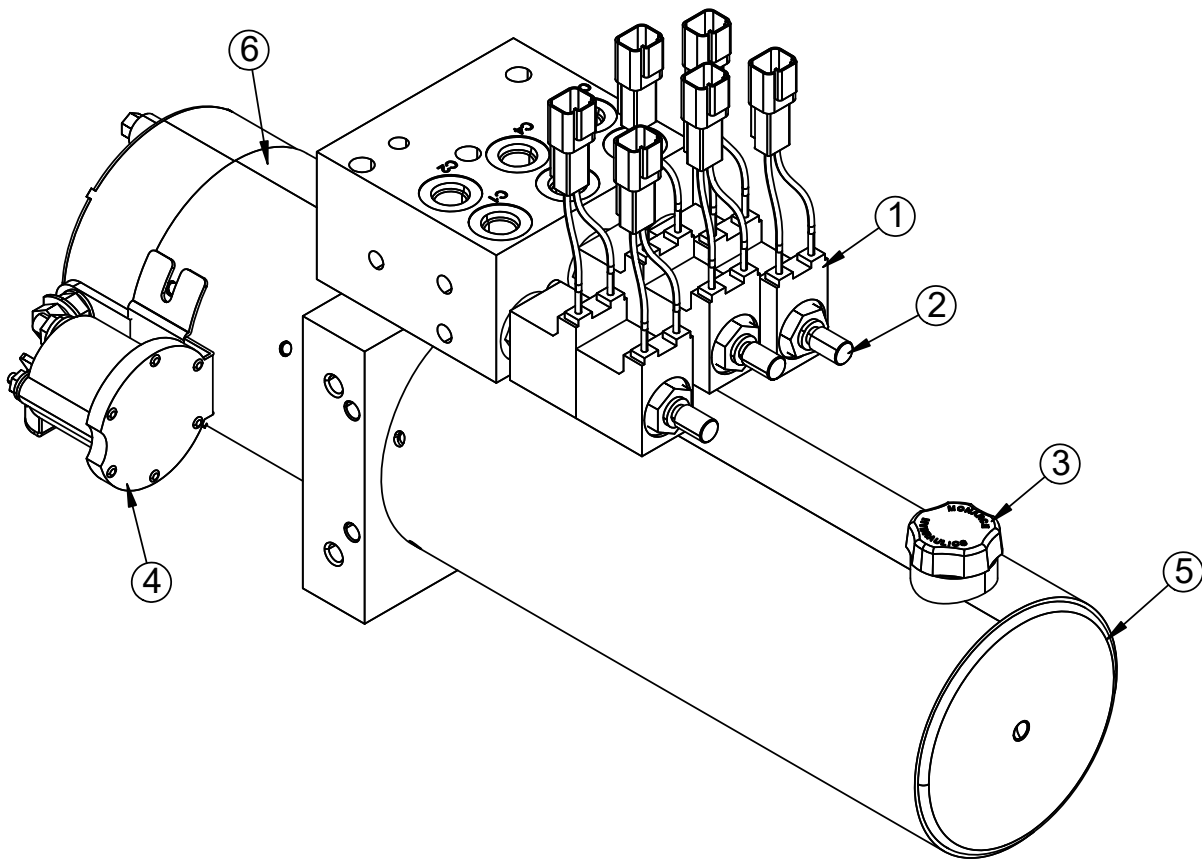
WINCH CONTROLLER (PN 42821) SHOWN FOR REFERENCE.

HARDWARE KITS:

92515

92513

Power Unit Assembly - PN 42513



Power Unit Assembly - PN 42513 Parts List

PN 42513

ITEM	PART	DESCRIPTION
1	44027	VALVE COIL EC3200 POWER UNIT
2	44028	VALVE CARTRIDGE EC3200 UNIT
REV. INITIAL RELEASE		

MANUFACTURER: BUCHER HYDRAULICS

ITEM	PART	DESCRIPTION
3	44025	FILL CAP- HYD RSRVR
4	44030	SOLENOID START EC3200 P-UNIT
5	44026	RSRVR EC3200 POWER UNIT
6	44029	MOTOR 12V EC3200 POWER UNIT
7	56648	ORING RSRVR EC3200 POWER UNIT

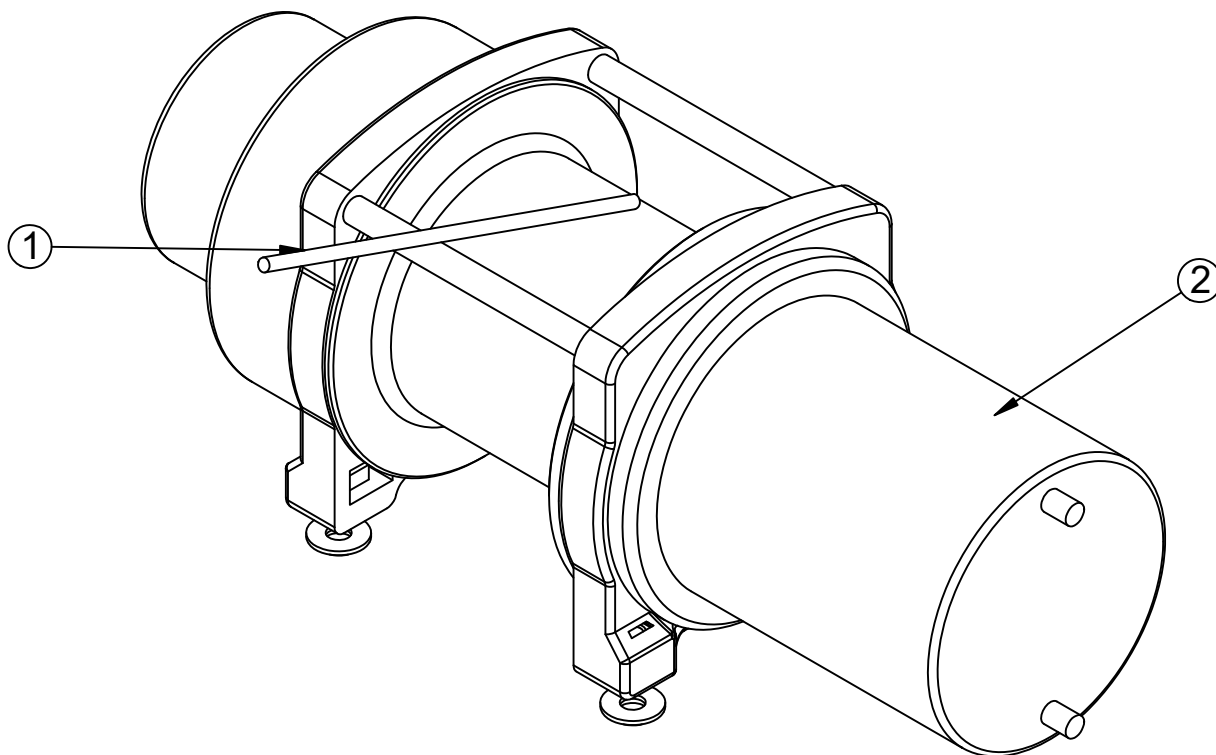
MANUFACTURER: MTE HYDRAULICS

ITEM	PART	DESCRIPTION
3	44025	FILL CAP- HYD RSRVR
4	44030	SOLENOID START EC3200 P-UNIT
5	99353	RSRVR EC3200 POWER UNIT
6	100734	MOTOR 12V EC3200 POWER UNIT
7	125086	ORING RSRVR EC3200 POWER UNIT

MANUFACTURER: KIT HYDRAULICS

ITEM	PART	DESCRIPTION
3	136638	FILL CAP- HYD RSRVR
4	136639	SOLENOID START EC3200 P-UNIT
5	136640	RSRVR EC3200 POWER UNIT
6	136641	MOTOR 12V EC3200 POWER UNIT
7	136642	ORING RSRVR EC3200 POWER UNIT

Winch DC 1600 W/65 FT Rope - PN 106133



Winch DC 1600 W/65 FT Rope - PN 106133 Parts List

PN 106133

ITEM	PART	DESCRIPTION
1	42316	WIRE ROPE 7/32 7X19 GAC 65FT

MANUFACTURER: WARN WINCH

ITEM	PART	DESCRIPTION
2	69303	SERVICE KIT MOTOR SPLINED 12V

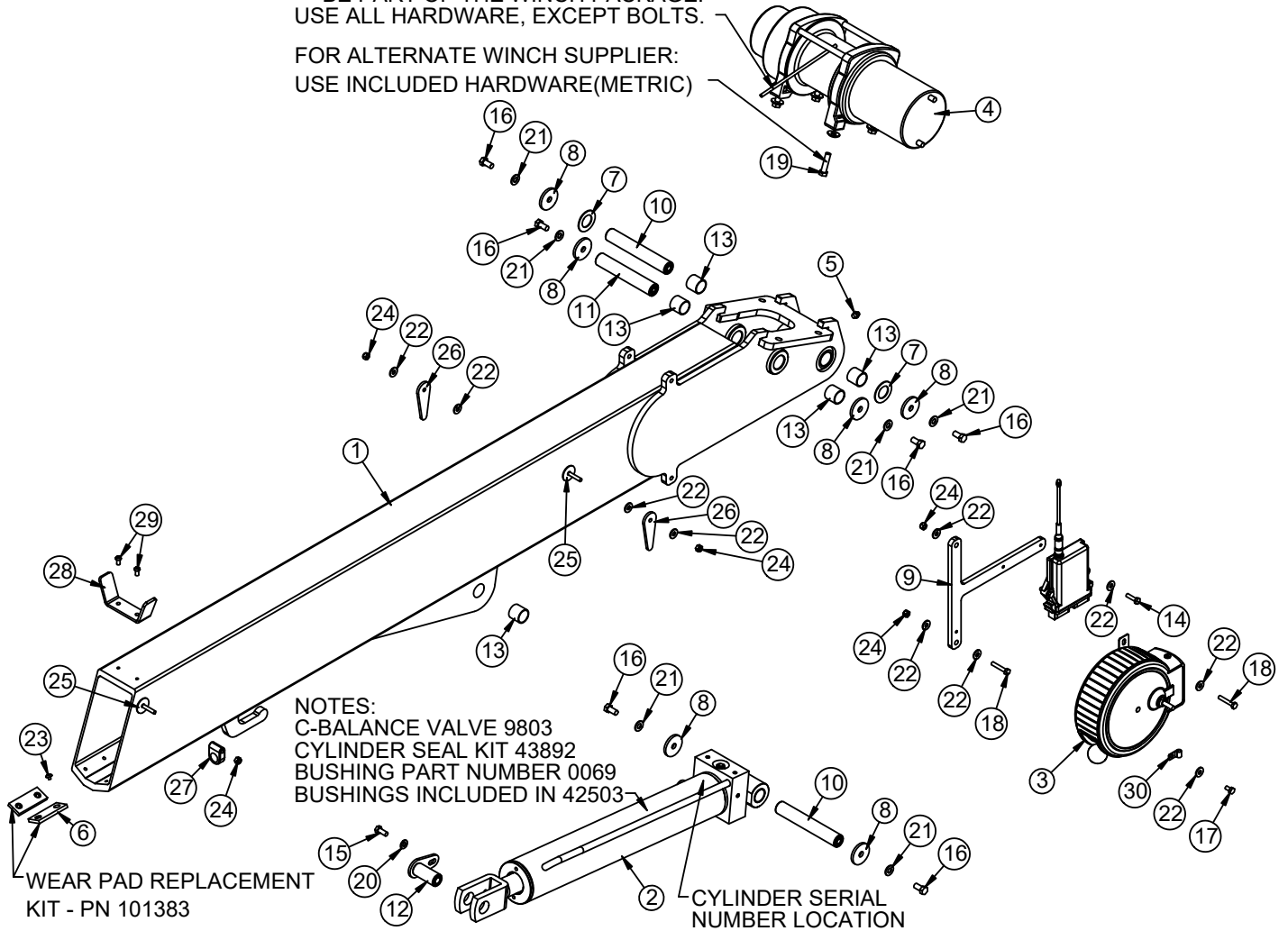
MANUFACTURER: COMEUP WINCH

ITEM	PART	DESCRIPTION
2	136643	SERVICE KIT MOTOR SPLINED 12V

Main Boom Assembly - PN 90396

MOUNTING HARDWARE WILL
BE PART OF THE WINCH PACKAGE.
USE ALL HARDWARE, EXCEPT BOLTS.

FOR ALTERNATE WINCH SUPPLIER:
USE INCLUDED HARDWARE(METRIC)



Main Boom Assembly - PN 90396 Parts List

PN 90396			
ITEM	PART	DESCRIPTION	QTY
1	134009	INNER BOOM EC3200 LW V2	1
2	42503	CYLINDER 3.00X13.00 EC3200	1
3	72602	CORD REEL ASM 15/21 FT CRANE	1
4	106133	WINCH DC1600 WARN W/65 FT ROPE	1
5	C1592	ZERK 1/8 NPT STRAIGHT	1
6	90415	WEAR PAD INNER EC3200 LW	2
7	87823	WASHER UHMW 1.025X1.75X0.06	2
8	9320	PIN CAP 0.44X1.75X0.19 YZ	6
9	88395	PLATE ACC MNT EC3200 LW	1
10	11688CR	PIN 1.00X6.31D&T ZC	2
11	90601CR	PIN 1.00X5.75 D&T ZC	1
12	42517CR	PIN TEAR DROP 1.00X2.19 ZC	1
13	0069	BUSHING BPC16DXR16 1.00X1.00	5
14	0480	CAP SCR 0.25-20X1.00 HHGR5	2
15	0420	CAP SCR 0.31-18X0.75 HHGR5	1
16	9843	CAP SCR 0.38-16X0.75 HHGR8	6
17	0478	CAP SCR 0.25-20X0.50 HHGR5	1
18	0220	CAP SCR 0.25-20X1.50 HHGR5	2
19	0345	CAP SCR 0.38-16X1.50 HHGR5	4
20	5591	WASHER 0.31 SAE FLAT YELLOW GR8	1
21	C6353	WASHER 0.38 SAE FLAT YELLOW GR8	6
22	0340	WASHER 0.25 USS FLAT	11
23	C4481	RIVET HCKPN MGP98TE610(ORDERW/C4486)	4
24	0333	NUT 0.25-20 HHGR5 NYLOC	5
25	95525	STUD 0.25-20X1.25 ADHESIVE MNT SS	3
26	19881PC	PLATE ANGLE INDICATOR 3315 PC BLACK	2
27	0337	HOSE CLAMP LN 3160 PP	1
28	90602	PLATE CABLE GUIDE MAIN BOOM EC3200 LW	1
29	D0561	CAP SCR 0.25-20X0.50 BTNHD SS	2
30	C5606	CLAMP 0.25 BLK VINYL	1

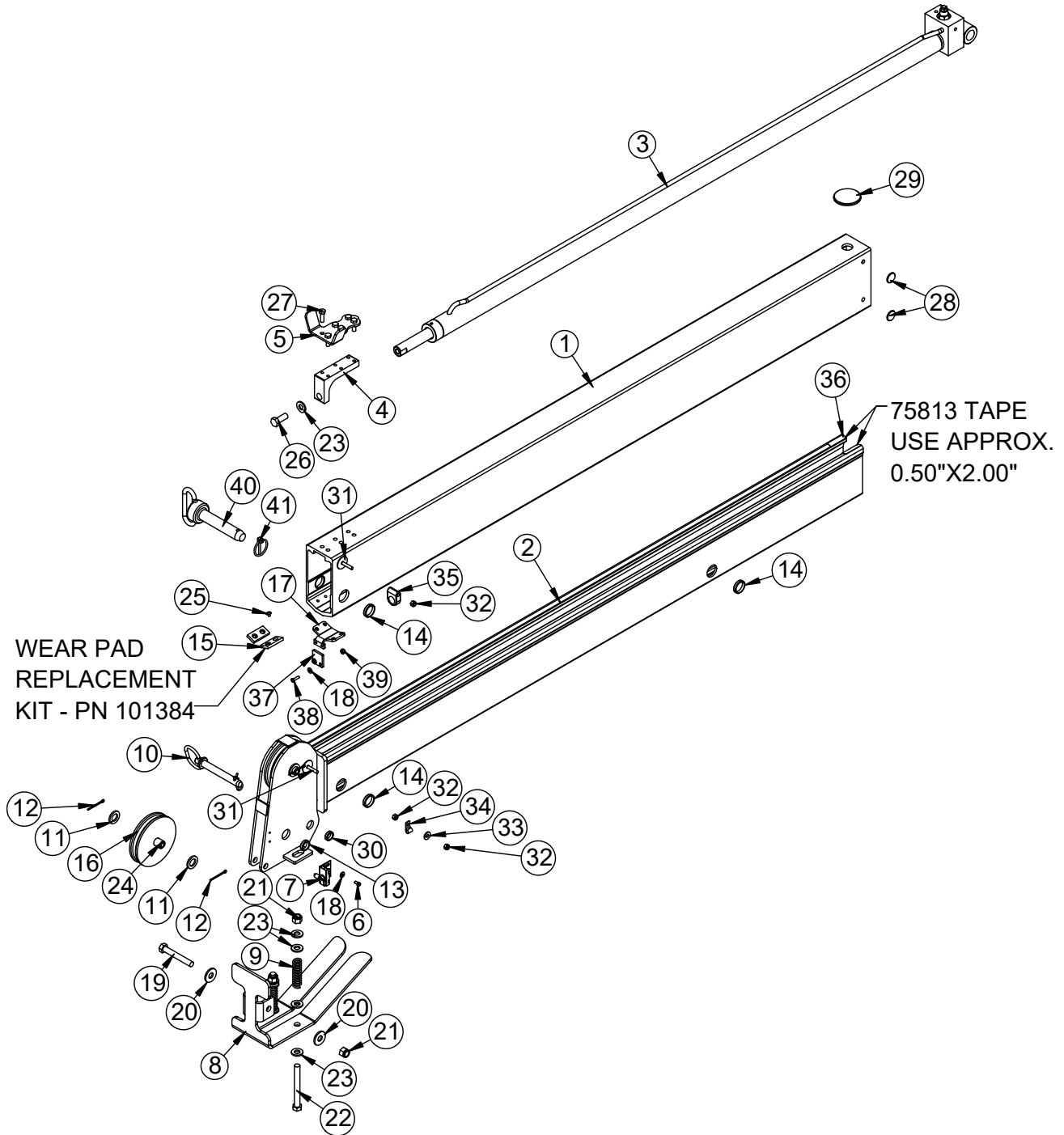
REV. E

NOTES:

**RADIO RECEIVER SHOWN FOR REFERENCE
HARDWARE INCLUDED WITH ALTERNATE WINCH:
4X CAP SCR M10X40L 8.8
4X WASHER LOCK 10MM
4X WASHER FLAT 10MM
4X NUT SQUARE 10MM**

HARDWARE KIT: 102328

Extension Boom Assembly - PN 90397



WEAR PAD
REPLACEMENT
KIT - PN 101384

7583 TAPE
USE APPROX.
0.50"X2.00"

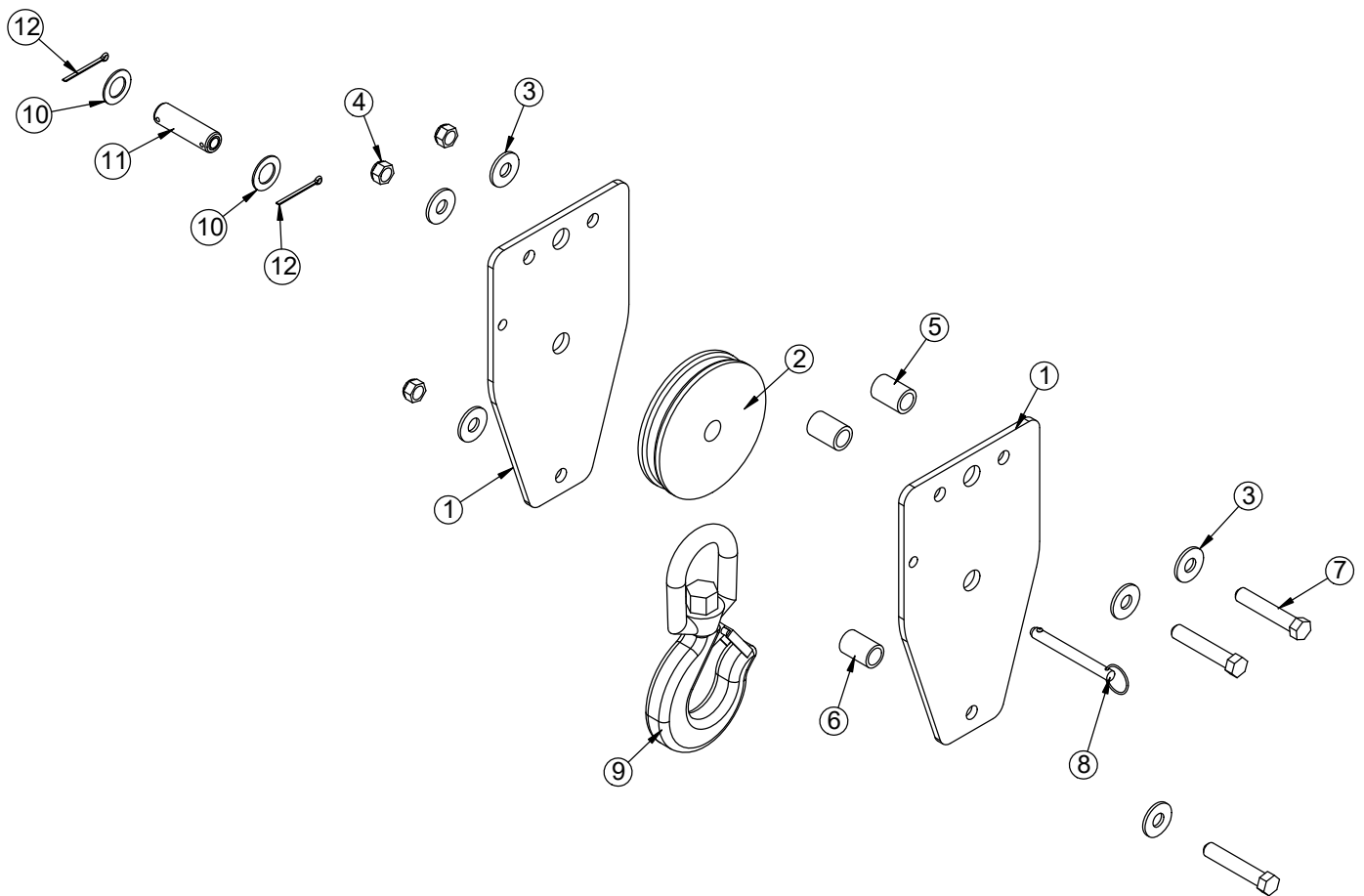
NOTES:
HARDWARE KIT: 102329

Extension Boom Assembly - PN 90397 Parts List

PN 90397			
ITEM	PART	DESCRIPTION	QTY
1	90407	EXT BOOM 1ST EC3200 LW	1
2	90408	EXT BOOM 2ND EC3200 LW	1
3	42507	CYLINDER 1.50X48.00	1
4	90952	PLATE EXT CYL MNT EC3200 LW	1
5	90413	PLATE EXT CYL MNT EC3200 LW	1
6	43846	SCREW #10-24X0.38 SH SS	2
7	35105	SWITCH LIMIT E1117-B9111-6C	1
8	42505	PLATE CRADLE EC3200 PC BLACK	1
9	27710	SPRING ANTI 2 BLOCK CRADLE A2B	2
10	42977	PIN HITCH 0.63X4.00	1
11	0423	MACHY WASHER 0.75ID 10GA	4
12	37824	COTTER PIN .125X1.00	4
13	87575	BUSHING BRONZE 0.75X0.25	4
14	88644	BUSHING BRONZE 1.06X0.25	6
15	90417	WEAR PAD 1ST EXT INSIDE EC3200 LW	2
16	42317	SHEAVE EC3200 5.00 DIA .22R/1.00THK	2
17	97331	PLATE STOP MNT 2ND EXT EC3200 LW	1
18	D0178	WASHER #10 SAE FLAT	4
19	0505	CAP SCR 0.50-13X3.50 HHGR5	1
20	0352	WASHER 0.50 USS FLAT	2
21	C6106	NUT 0.50-13 HHGR5 NYLOC	3
22	507	CAP SCR 0.50-13X4.50 HHGR5	2
23	D0790	WASHER 0.50 SAE FLAT YELLOW GR8	9
24	42524CR	PIN 0.75X2.50 COTTER ZC	2
25	C4481	RIVET HCKPN MGP98TE610(ORDERW/C4486)	4
26	10666	CAP SCR 0.50-13X1.25 HHGR8	1
27	21170	CAP SCR 0.31-18X1.00 HHGR8	6
28	97330	WEAR PAD 0.09X1.00 RND	4
29	9991	WEAR PAD 0.19X2.50 RND	1
30	94719	BUSHING BRONZE 0.66X0.25	2
31	95525	STUD 0.25-20X1.25 ADHESIVE MNT SS	2
32	0333	NUT 0.25-20 HHGR5 NYLOC	3
33	0340	WASHER 0.25 USS FLAT	1
34	C5606	CLAMP 0.25 BLK VINYL	1
35	0337	HOSE CLAMP LN 3160 PP	1
36	75813	TAPE UHMW 0.020X1.00(RM)	0.17
37	97332	PLATE STOP 2ND EXT EC3200 LW	1
38	D0894	CAP SCR #10-24X0.75 BTNHD SS	2
39	C4956	NUT #10-24 HH NYLOC SS	2
40	12824	PIN HITCH 1.00X4.50	1
41	5753	PIN 0.19X1.56 LYNCH	1

REV. C

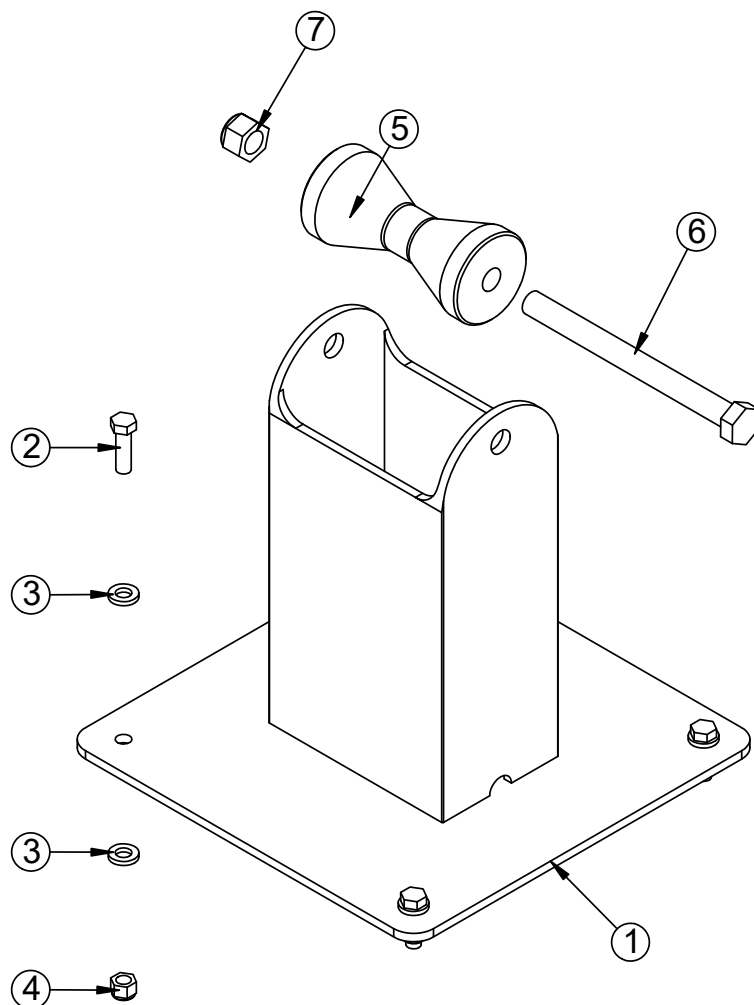
Snatch Block Assembly - PN 82652



Snatch Block Assembly - PN 82652 Parts List

PN 82652			
ITEM	PART	DESCRIPTION	QTY
1	42523PC	PLATE SNATCH BLOCK EC3200 PC RED ET-5391	2
2	42317	SHEAVE EC3200 5.00 DIA .22R/1.00THK	1
3	0352	WASHER 0.50 USS FLAT ZINC	6
4	5468	NUT 0.50-13 HHGR8 NYLOC	3
5	27810	SPACER 3315 SNATCH BLOCK UHMW	2
6	16607	SPACER 3315 SNATCH BLOCK BLACK	1
7	47868	CAP SCR 0.50-13X2.75 HHGR8	3
8	9263	PIN .38X3.00 QUICK RELEASE	1
9	C6018	HOOK CRANE-3 TON	1
10	0375	MACHY WASHER 0.75ID 14GA	2
11	42524CR	PIN 0.75X2.50 COTTER ZC	1
12	37824	COTTER PIN .125X1.00	2
REV. A			

Boom Support Assembly - PN 95153



NOTICE

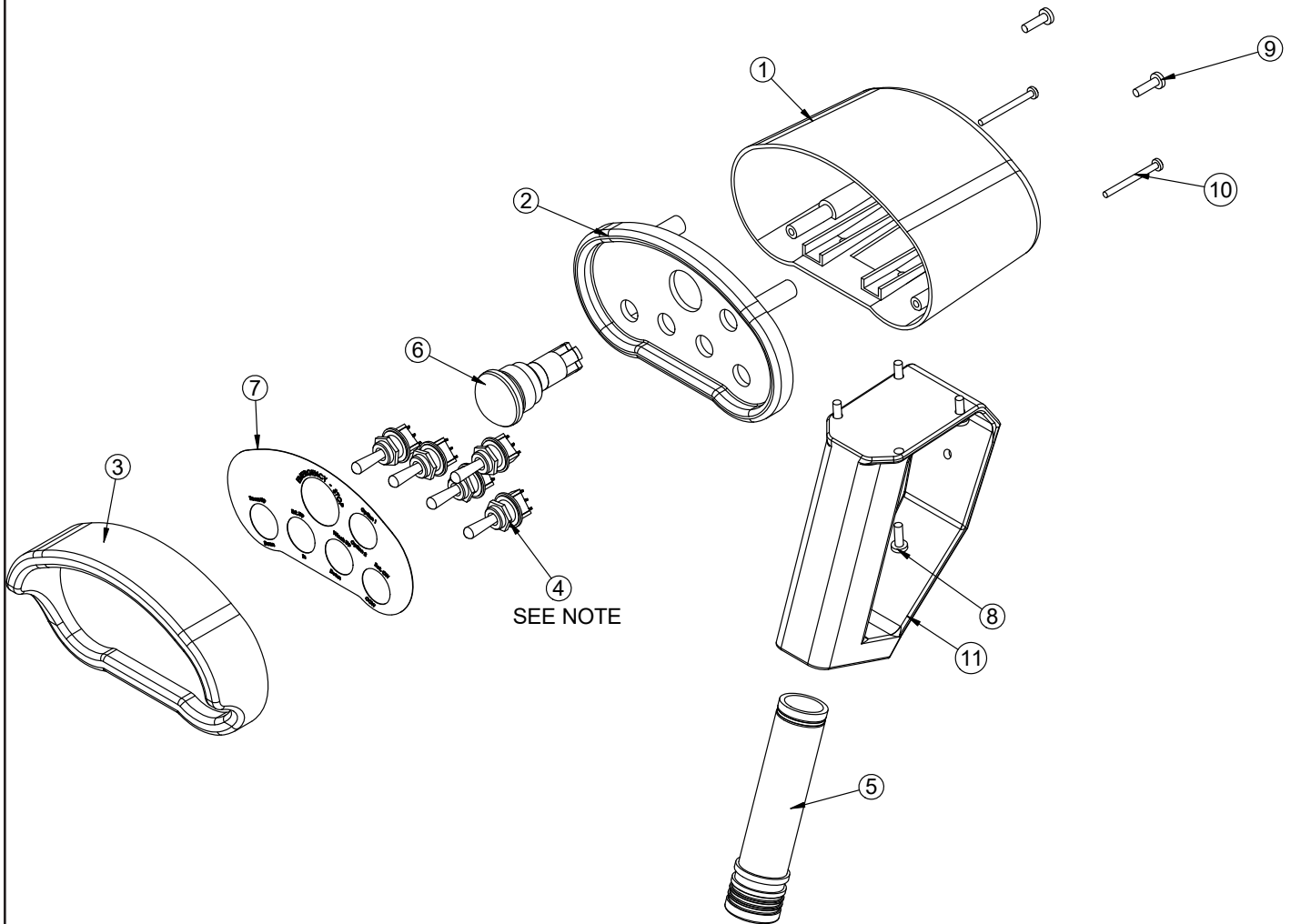
Avoid corrosion to boom material by ensuring boom support has a nonmetallic contact surface. See item 5 in drawing and parts list below.

PN 95153

ITEM	PART	DESCRIPTION	QTY
1	95154	BOOM SUPPORT WLDMT AL EC3200 LW	1
2	335	CAP SCR 0.38-16X1.25 HHGR5	4
3	66182	WASHER 0.38 BONDED SEALING NEO BACK	8
4	347	NUT 0.38-16 HHGR5 NYLOC	4
5	95159	ROLLER BOOM SUPPORT AL EC LW	1
6	C0969	CAP SCR 0.63-11X7.00 HHGR5	1
7	2826	NUT 0.63-11 HHGR5 NYLOC	1

REV. INITIAL RELEASE

Radio Transmitter Assembly - PN 67894



PN 67894

ITEM	PART	DESCRIPTION	QTY
1	20088	CONTROL HANDLE HOUSING 4 FCTN HET	1
2	51830	CONTROL HANDLE FACE PLT 5 FCTN	1
3	24385	GUARD RADIO SWITCH 4 FCTN	1
4	22600	SWITCH TOGGLE HET RADIO 63019300	5
5	35441	BATTERY TUBE AA HETRONIC RADIO	1
6	16975	SWITCH E STOP ASM HETRONIC RADIO	1
7	51831	DECAL CONTROL HANDLE 5 FCTN	1
8	38475	SCREW 4MMX12MM PHMS PH	4
9	36156	SCREW 4MMX14MM PHMS PH	2
10	29460	SCREW 3MMX35MM PHMS PH	2
11	50932	CONTROL HANDLE GRIP LESS TRIGGER HET H2	1

REV. INITIAL RELEASE



Subject to Change without Notification.
© 2024 Stellar Industries, Inc.