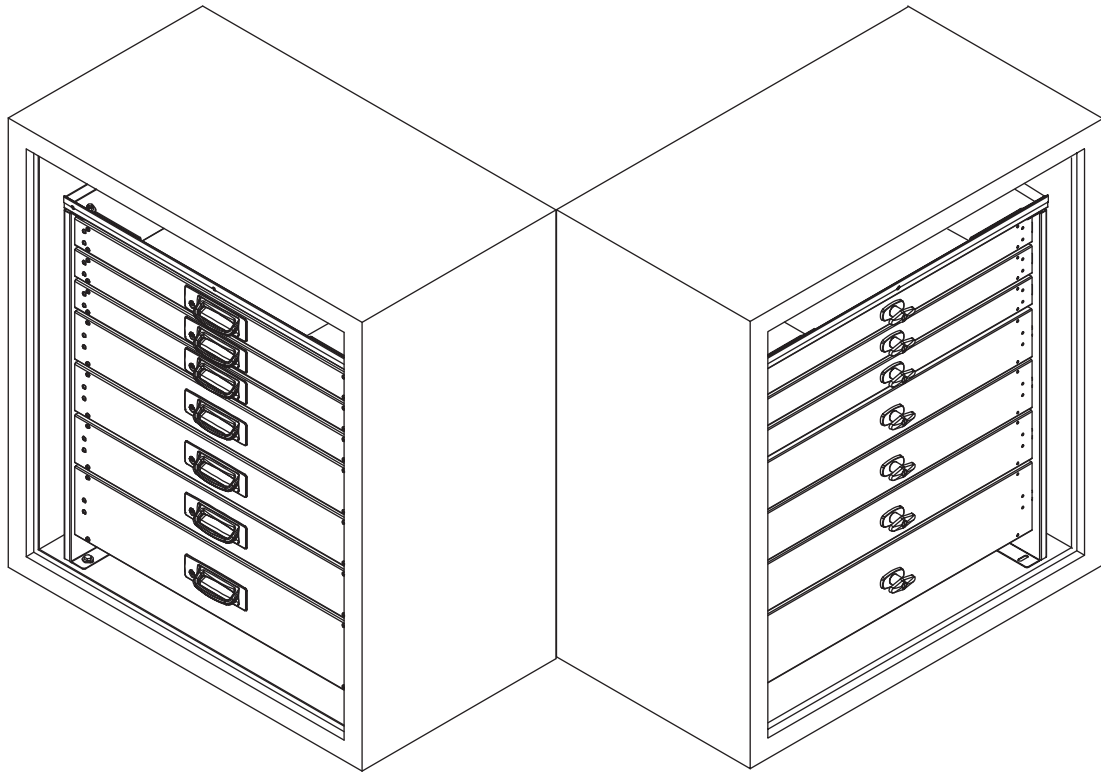


Installation Guide

Stellar® Mobile Toolbox System

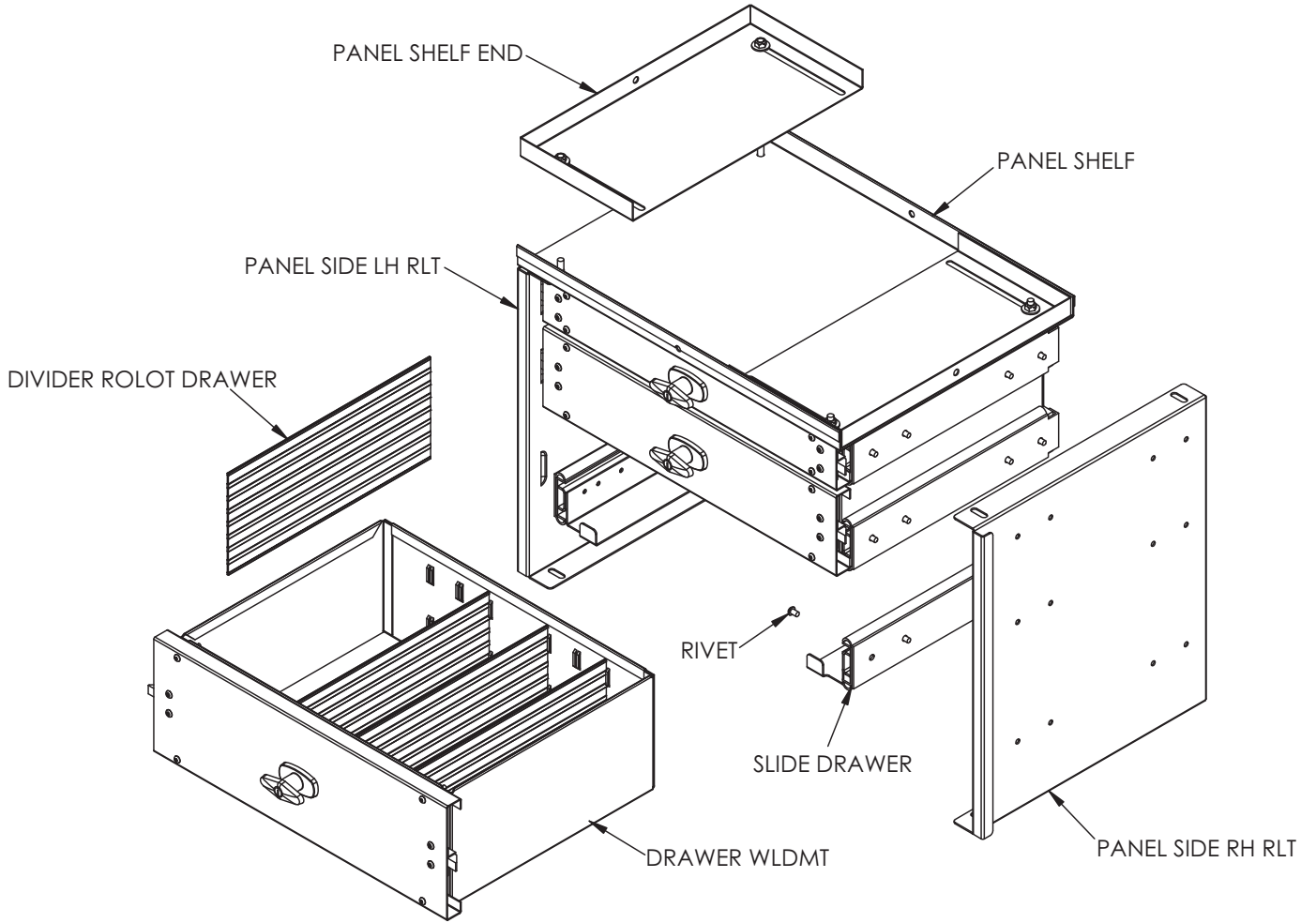


Stellar Industries
190 State Street
PO Box 169
Garner, IA 50438
800-321-3741
www.stellarindustries.com

Subject to Change without Notification.
© 2023 Stellar Industries

Manual Part No. 24265
Last Revision: 03/27/23

Nomenclature



Installation Overview



Note: Drawers are removable. Pull the drawer full out, hang onto the latch, and gently tap the bottom up. The drawer should pop out. This may aid in the installation process.

Step 1:

Compartment side and outer drawer side face should be flush. This will allow the drawers to open unobstructed by the compartment.

Step 2:

Push the drawer set tight to the back of the compartment. This allows for a 5/16-18 UNC cap screw to be used to tie the drawer shelf to the back wall.

Step 3:

Extend the adjustable drawer shelf end tight to the front wall of the compartment. This allows for a 5/16-18 UNC cap screw to be used to tie the drawer shelf to the side wall. Repeat for other shelf end if application allows.

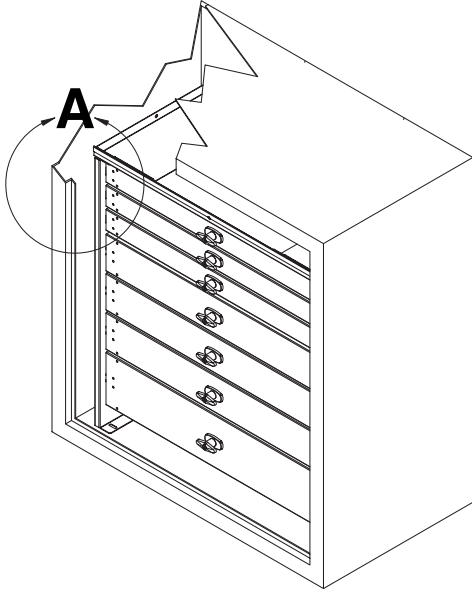
Step 4:

Drill four(4) .344 holes for mounting of the drawer set to the floor of the compartment. Use 5/16-18 UNC cap screws to fasten drawer set to floor.

Installation Details

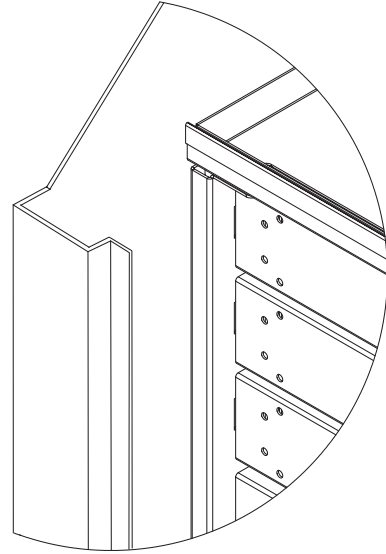
Step 1:

Compartment side and outer drawer side face should be flush. This will allow the drawers to open unobstructed by the compartment.



Drawer shown in compartment.

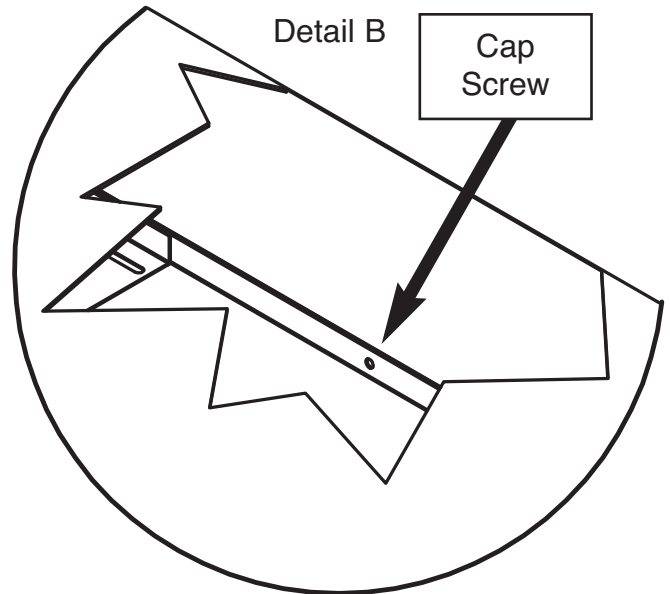
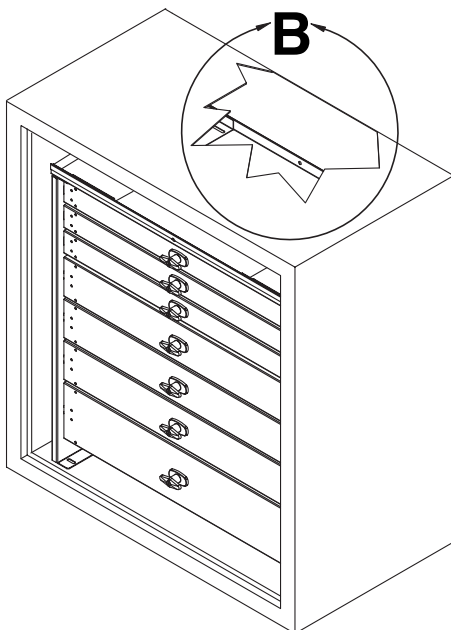
Detail A



Compartment side and outer drawer side face are flush

Step 2:

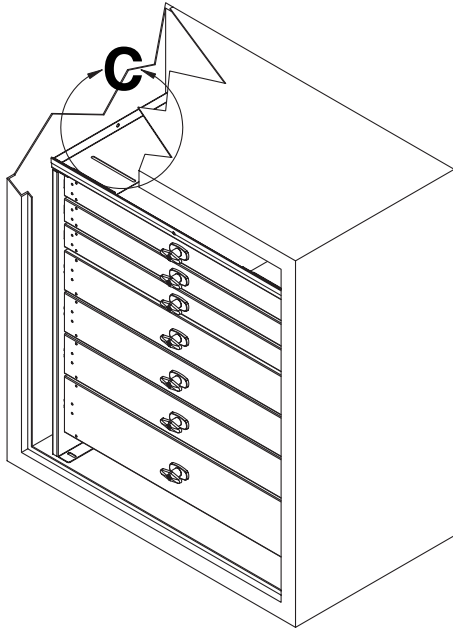
Push the drawer set tight to the back of the compartment. This allows for a 5/16-18 UNC cap screw to be used to tie the drawer shelf to the back wall.



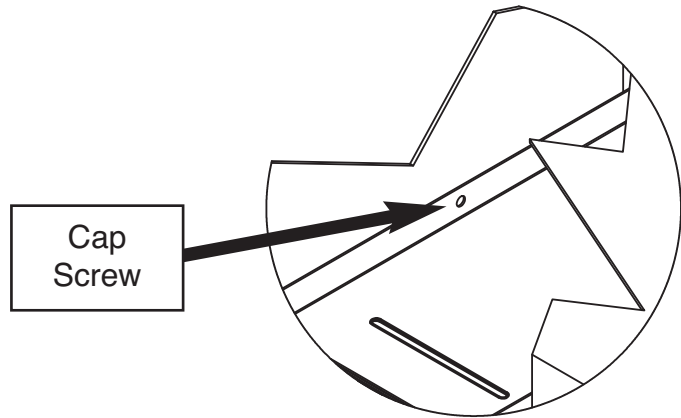
The drawer set is tight to the back of the compartment.

Step 3:

Extend the adjustable drawer shelf end tight to the front wall of the compartment. This allows for a 5/16-18 UNC cap screw to be used to tie the drawer shelf to the side wall. Repeat for other shelf end if application allows.



Detail C

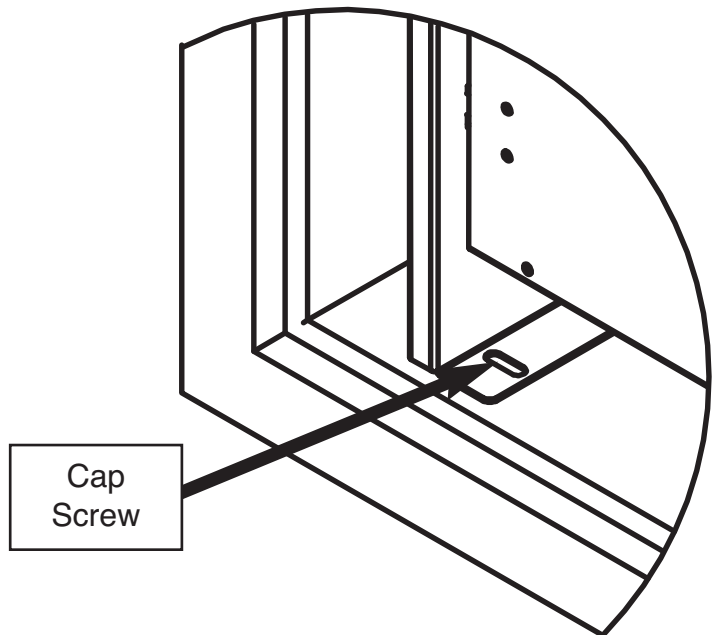
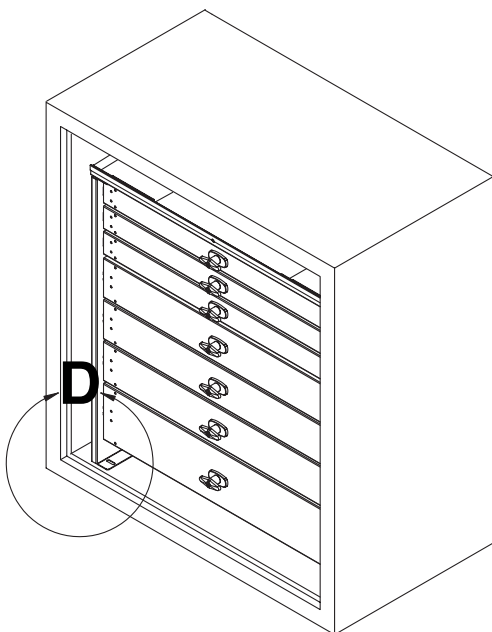


The drawer shelf is tight to the front wall of the compartment.

Step 4:

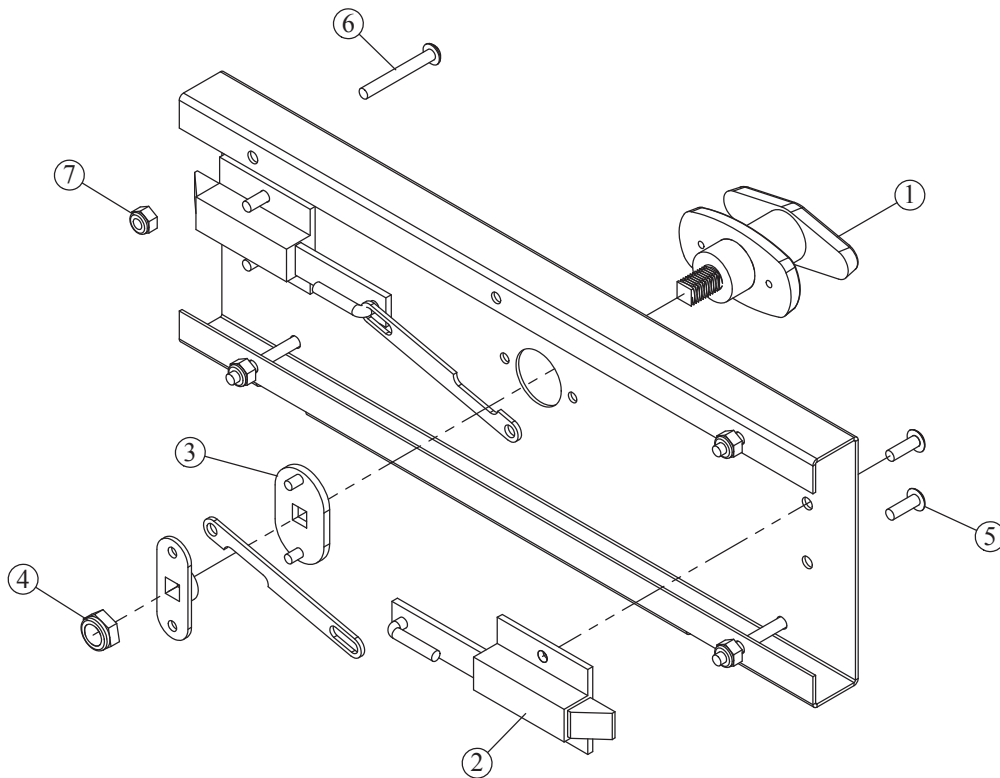
Drill four(4) .344 holes for mounting of the drawer set to the floor of the compartment. Use 5/16-18 UNC cap screws to

Detail D



Drill four holes into the bottom of the compartment.

Replacement Parts - T Handle

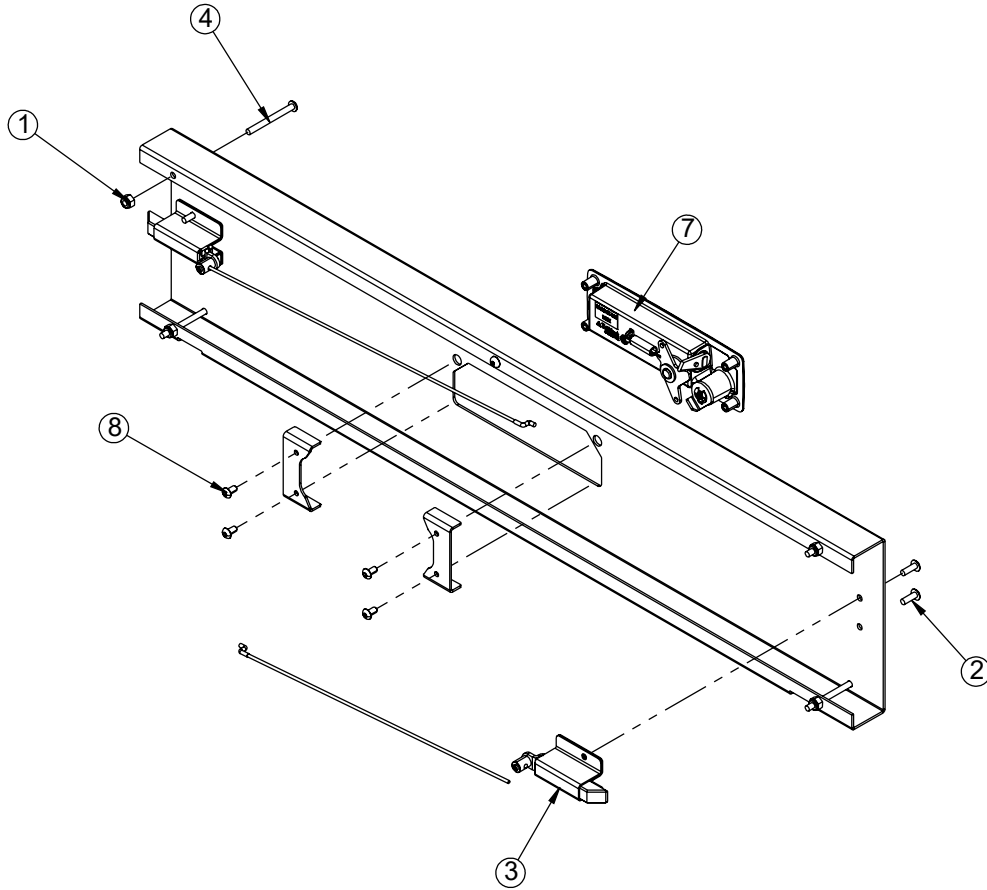


ITEM	PART No.	DESCRIPTION	QTY.
1	19598	HANDLE (T) ROLOT DRAWER AH112	1
2	19599	LATCH SPRING ROLOT DRAWER	2
3	20985	CAM T-HANDLE LATCH	1
4	81810	NUT 0.38-24 HH JAM NYLOC	1
5	11754	RIVET SS 0.19X0.063-0.437 MGLP-U6-E	4
6	21039	CAP SCR #10-24X1.50 BTNHD SS	4
7	C4956	NUT #10-24 HH NYLOC SS	4

Note: The parts listed on this page are common to all Stellar Industries Mobile Drawer Sets. For replacement parts needed for your specific drawer set, please con-tact Customer Service at

800-321-3741

Replacement Parts - Bale-Style Pull Handle



ITEM	PART	DESCRIPTION	QTY
1	C4956	NUT #10-24 HH NYLOC SS	4
2	11754	RIVET SS 0.19X0.063-0.437 MGLP-U6-E	4
3	130958	LATCH SPRING BH ROLOT DRAWER	2
4	C6343	CAP SCR #10-24X2.00 BTNHD SS	4
5	133091	PANEL FRONT BH 7HX34W ROLOT DRAWER PC GRAY ET-0502	1
6	82377	RIVET AL .19X.062-.270 MGLP-B6-4	1
7	126180	HANDLE (PULL) ROLOT DRAWER	1
8	134051	SCREW #10-24X0.38 BTNHD ZINC	4

Note: The parts listed on this page are common to all Stellar Industrie Mobile Drawer Sets. For replacement parts needed for your specific drawer set, please contact Customer Service at

800-321-3741



Subject to Change without Notification.
© 2023 Stellar Industries