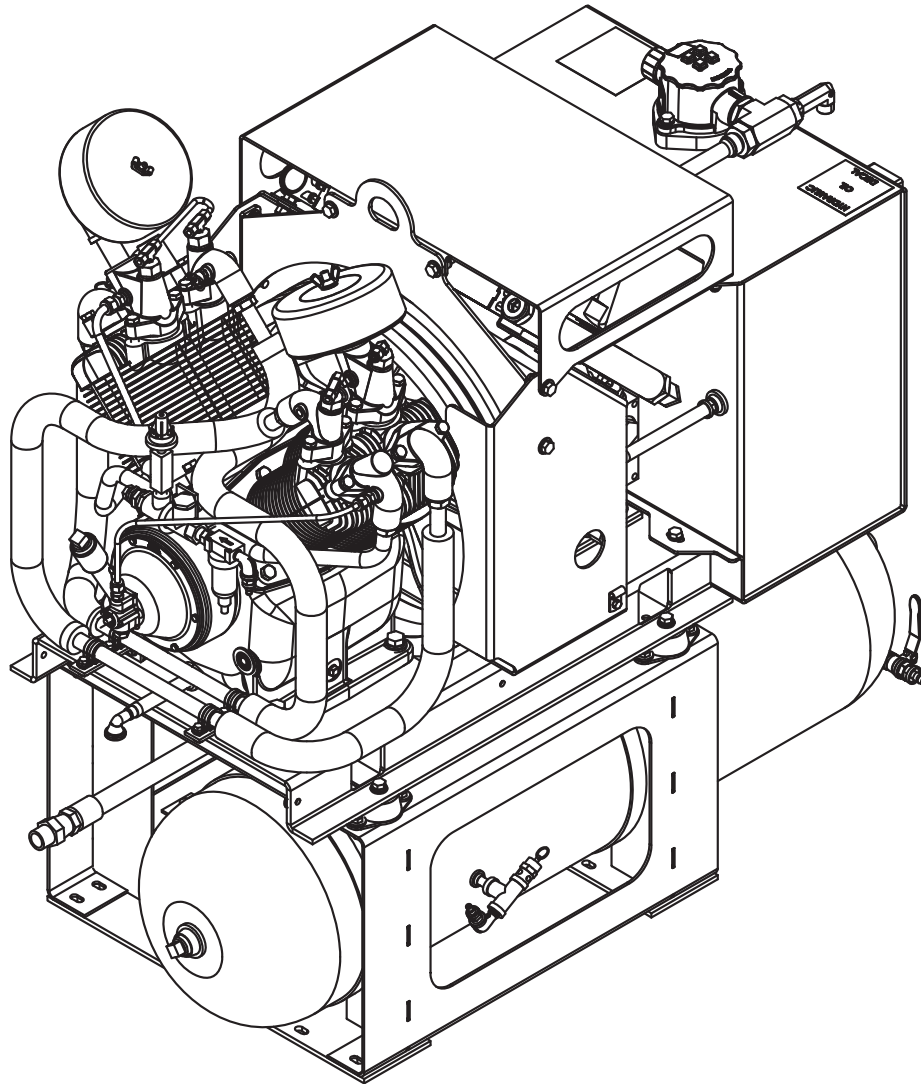




Model 46P

Tire Service Compressor Manual

Specifications • Installation • Assembly



Stellar Industries Inc.
740 North State Street
PO Box 169
Garner, IA 50438
800-392-3015

www.stellarindustries.com

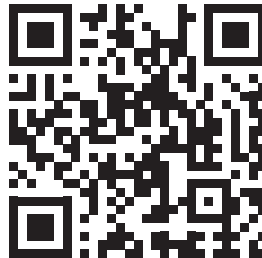
Subject to Change without Notification.
© 2024 Stellar Industries Inc

Rev1
134098

Warning / Notice / Serial Tag

WARNING

Operating, maintaining, and servicing a Stellar product may expose you to chemicals including, but not limited to, engine exhaust, carbon monoxide, phthalates, and lead. These chemicals are known to the State of California to cause cancer and birth defects (or other reproductive harm). To keep your exposure to a minimum, be sure to avoid breathing exhaust and service your Stellar product in a well-ventilated area while wearing gloves or washing your hands frequently. For more information, go to www.P65Warnings.ca.gov/passenger-vehicle.



www.p65warnings.ca.gov

NOTICE

Cold Weather Performance

Although clear data on cold weather performance from every steel manufacturer is not available for all types and thicknesses of steel, Stellar Industries is confident that the weldments on our products will operate to 100% of their intended purpose to temperatures down to -40° F / C.

It is recommended if Stellar manufactured equipment needs to be used in temperatures below -40° F / C, the operator should pull the unit into a climate-controlled area and allow the weldments to warm up to and then maintain a temperature above this level.


	MODEL <input type="text"/>
SERIAL NO. <input type="text"/>	
PATENT / IP INFORMATION: www.stellarindustries.com/ip	DATE <input type="text"/>
MADE IN THE USA by the Employee Owners of Stellar Industries PN 112060	

Table of Contents

Introduction	iv
Chapter 1 - Specifications	1
46P Crane Mount & Body Mount Dimensions	2
Chapter 2 - Intallation	3
Component Installation	4
46P Electrical Schematic	5
Hydraulic System	6
Air System.....	6
Head Unloading System	7
Typical Hydraulic Circuit for Single-Section Pump	8
Typical Hydraulic Circuit for Tandem (Two Part) Pump	9
Typical Hydraulic Circuit for Compressor w Aux. Cooler.....	10
Chapter 3 - Assemblies	11
CPRSR Asm 46P w/Hyd Rsrvr Body Mnt - 138764	12
CPRSR Asm 46P w/Hyd Rsrvr Body Mnt - 138764	13
46P CPRSR Asm w/Hyd RSRVR - PN 138764 Parts List	14
CPRSR Asm 46P w/Hyd RSRVR Crane Mnt - PN 133379.....	16
CPRSR Asm 46P w/Hyd RSRVR Crane Mnt - PN 133379.....	17
46P CPRSR Asm 20 Gal - PN 133379 Parts List - Cont.....	18
CPRSR Asm 46 w/Hyd RSRVR Body Mnt W/Air Tank - PN 138765	20
CPRSR Asm 46 w/Hyd RSRVR Body Mnt W/Air Tank - PN 138765 Parts List	21
CPRSR Asm 46P w/Hyd RSRV Crane Mnt W/Air Tank	22
CPRSR Asm 46P w/Hyd RSRV Crane Mnt W/Air Tank	23
CPRSR Asm 46P 9000 - PN 58970	24
CPRSR Asm 46P 9000 - PN 58970 Parts List.....	25
CPRSR Asm 46P 9000 - PN 58970 Parts List-continued	26
Air Tank Assembly - 20 Gal - PN 43906.....	28
Air Tank Assembly - 20 Gal - PN 43906 Parts List.....	29
Air Tank Assembly- 20 Gal - PN 43907	30
Air Tank Assembly- 20 Gal - PN 43907	31
Crankcase Group.....	32
Crankshaft Group.....	33
Centrifugal Unloader Group	34
Piston/Rod Group – Low Pressure	35
Piston/Rod Group – High Pressure.....	36
Piston/Rod Group – High Pressure Parts List.....	37
Cylinder Group – with Head Unloaders	38
Cylinder Group – with Head Unloaders Parts List	39
Tubing and Control Group – with Head Unloaders	40
Tubing and Control Group – with Head Unloaders	41

For Technical Questions, Information, Parts, or Warranty, Call Toll-Free at

800-321-3741

Hours: Monday - Friday, 8:00 a.m. - 5:00 p.m. CST

Or email at the following addresses:

Technical Questions, and Information:

service@stellarindustries.com

Order Parts:

parts@stellarindustries.com

Warranty Information:

warranty@stellarindustries.com

Introduction

Stellar Industries® Air Compressors are designed to provide safe and dependable service for a variety of operations. With proper use and maintenance, these air compressors will operate at peak performance for many years.

To promote this longevity, carefully study the information contained in this manual before putting the equipment into service. Though it is not intended to be a training manual for beginners, this manual should provide solid guidelines for the safe and proper usage of the air compressor.

Once you feel comfortable with the material contained in this manual, strive to exercise your knowledge as you safely operate and maintain the air compressor. This process is vital to the proper use of the unit.

A copy of this manual is provided with every air compressor and can be found in the hard plastic manual case that is installed on the chassis. A copy of this manual shall remain with the air compressor at all times.

Throughout the manual, three signal words will be used to bring attention to important items:

NOTICE

A NOTICE signal word indicates a practice not related to physical injury.

⚠ WARNING

A WARNING signal word indicates a hazardous situation which, if not avoided, could result in death or serious injury.

⚠ DANGER

A DANGER signal word indicates a hazardous situation which, if not avoided, will result in death or serious injury.

Information contained within this manual does not cover all maintenance, operating, or repair instructions pertinent to all possible situations. Please be aware that some sections of this manual contain information pertaining to Stellar Industries® manufactured air compressors in general and may or may not apply to your specific model.

This manual is not binding. Stellar Industries reserves the right to change, at any time, any or all of the items, components, and parts deemed necessary for product improvement or commercial/production purposes. This right is kept with no requirement or obligation for immediate mandatory updating of this manual.

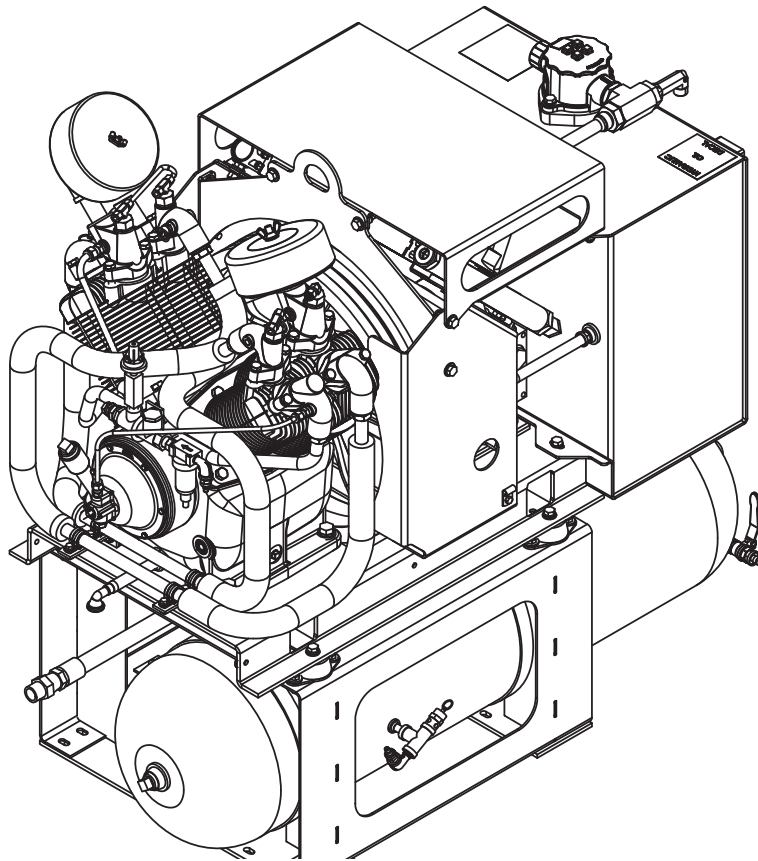
If more information is required or technical assistance is needed, or if you feel that any part of this manual is unclear or incorrect, please contact the Stellar Industries Customer Service Department by phone at 800-392-3015 or email at service@stellarindustries.com.

Chapter 1 - Specifications

Chapter Contents

46P Crane Mount & Body Mount Dimensions.....	2
--	---

46P Crane Mount & Body Mount Dimensions



SPECIFICATIONS	BODY MOUNT (138765)	CRANE MOUNT 134274)
Hydraulic System	18 GPM @ 2500 PSI	
Max Compressor Speed	1000 RPM	
Hydraulic Operating Pressure	2500 PSI	
Hydraulic Relief Pressure	3000 PSI	
Max Working Pressure	175 PSI	
Air Relief Valve	200 PSI	
Air Delivery (At Max Speed)	46 CFM @ 100 PSI	
Weight (Hydraulic Driven Asm)	470 lbs.	
Weight (Air Pump Only)	220 lbs.	
Dimensions (Length)	49.87"	48.16"
Dimensions (Width)	26.62"	23.19"
Dimensions (Height)	42.35"	45.52"
Electrical	12V DC	
Crankcase Oil Capacity	4 Quarts	
Cooler Fan	800 CFM, 12 Volt (Pull)	
Drive Type	Direct Driven	

NOTICE

Duty cycle on Piston Compressors is 50:50 over 10 minutes.

Chapter 2 - Intallation

Chapter Contents

Component Installation	4
46P Electrical Schematic	5
Hydraulic System	6
Air System.....	6
Head Unloading System	7
Typical Hydraulic Circuit for Single-Section Pump	8
Typical Hydraulic Circuit for Tandem (Two Part) Pump	9
Typical Hydraulic Circuit for Compressor w Aux. Cooler.....	10

Component Installation

This section pertains to the installation of the air compressor, PTO, pump and other related items. The instructions are intended as a guide to assist you with particular installation. These instructions will provide only general information.

Pump Assembly:

The pump assembly may either be installed directly on the PTO or as an optional method, may be driven by a driveline from the PTO. Pump manufacturers provide specific installation information for their products and should be consulted if questions arise. Note: A dual or tandem hydraulic pump is recommended when additional hydraulically operated equipment are added to the hydraulic system.

PTO Assembly:

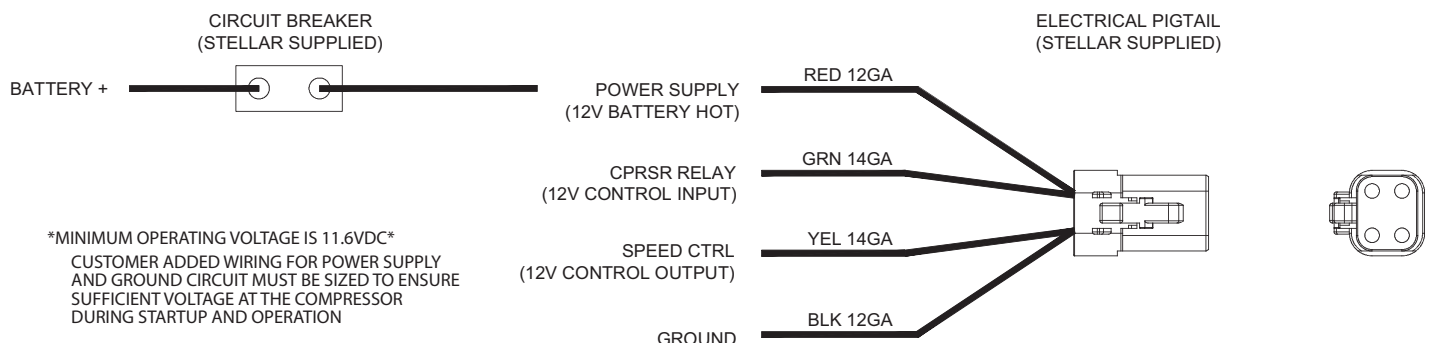
Check with the PTO manufacturer's representative for specific instructions regarding your particular make, model, and year of vehicle. As some trucks may require modification of the transmission cross member and the exhaust system, the manufacturer's instructions should be followed to ensure proper installation of the PTO.

Compressor Assembly:

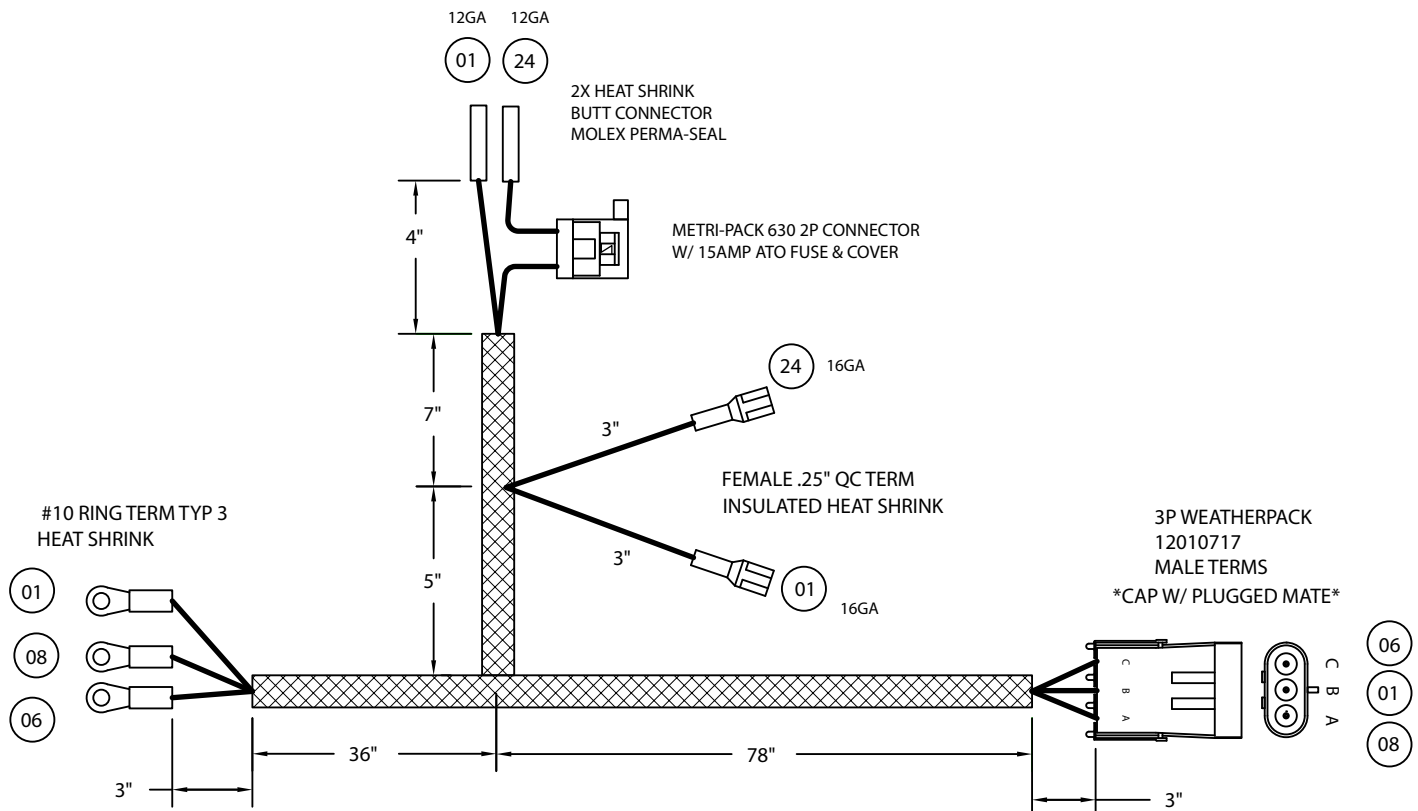
Prepare the mounting location of the compressor by locating and drilling four (4) holes, 1/2" diameter as per the mounting pattern of the air compressor base. Using four (4) 3/8" x 1.25 GR-5 cap screws, 3/8" flat washer, and 3/8" nyloc nut, secure the compressor in place. The compressor is air cooled, and must have a clean supply of cooling air to the fan with minimum restrictions. Adequate space must be provided for proper circulation of air.

Electric Speed Control:

An optional electric or electronic speed control must be used to maintain proper operating speed of the air compressor. The engine speed control will automatically increase from idle to preset speed when engaged and decrease when disengaged.



46P Electrical Schematic



PN 11144			
CIRCUIT NO.	CIRCUIT	WIRE GA	WIRE COLOR
01	GROUND	SEE DWG	BLACK WITH WHITE TEXT
06	COMPRESSOR	SEE DWG	GREEN WITH BLACK TEXT
08	SPEED CNTRL	16GA	GREEN WITH BLACK TEXT
24	FAN	SEE DWG	GREEN WITH BLACK TEXT
REV. H			

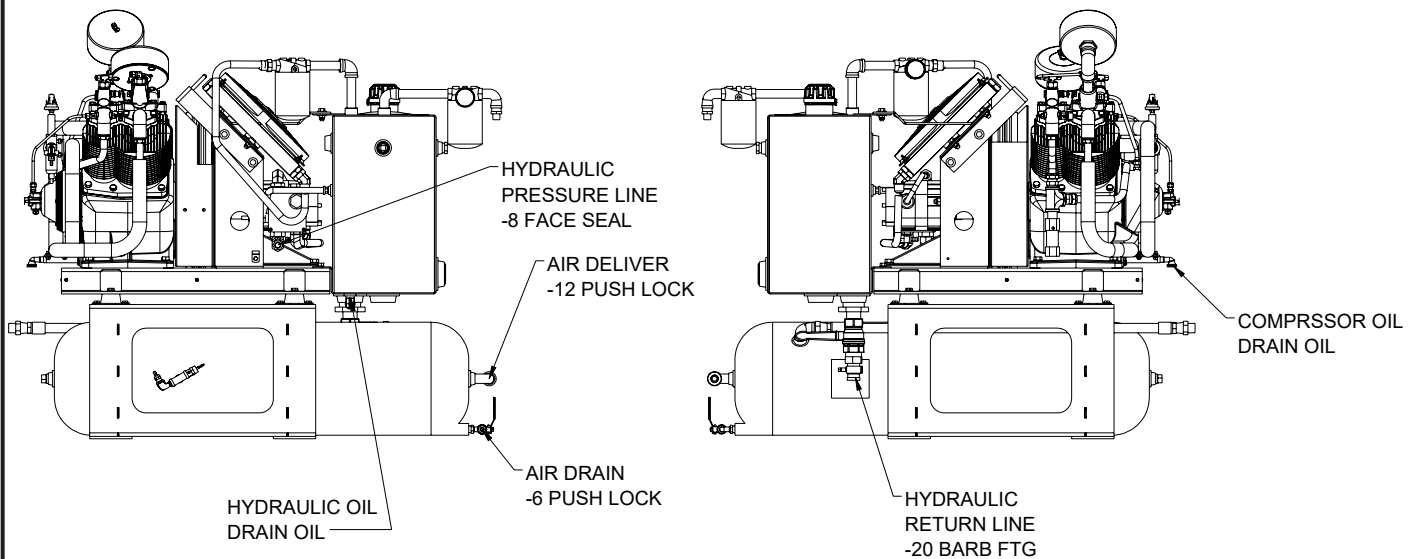
- NOTES:**
WIRE TO BE GXL NYLON YARN.
LOOM TO BE BRAIDED NYLON YARN.
CIRC 24 SPLICES TO CIRC 06 IN HARNESS.
APPLY PART NUMBER LABEL NEAR WEATHER PACK CONNECTOR END.

Hydraulic System

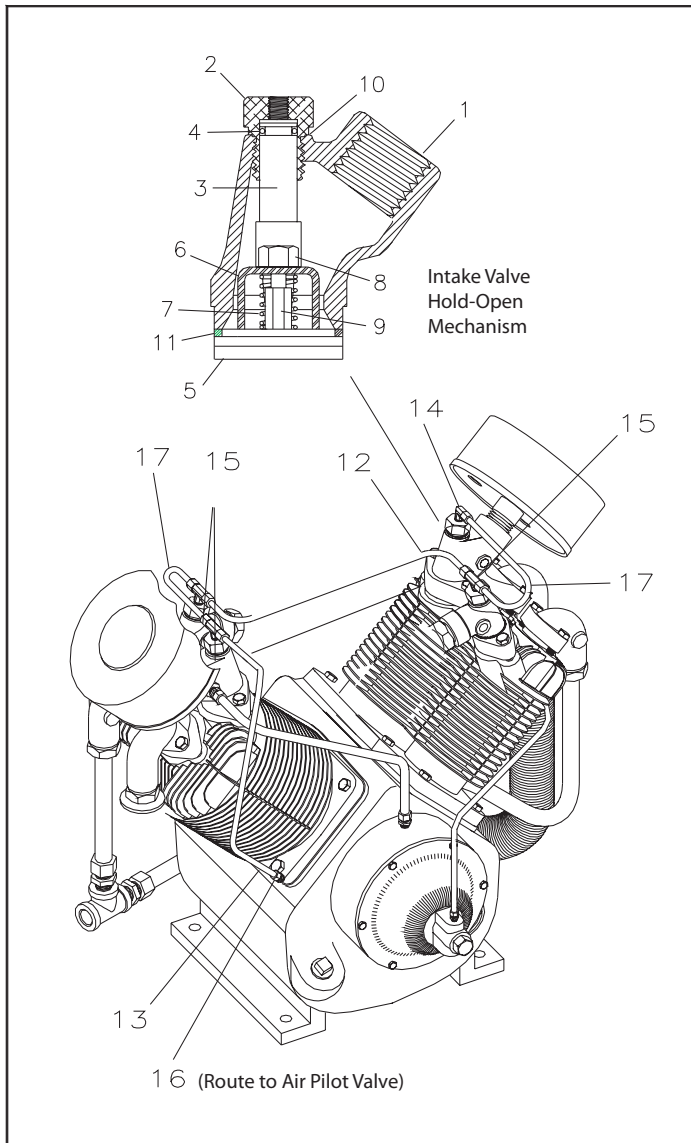
Installed on the compressor is a valve block assembly that controls the flow to the hydraulic motor. To this block, a 1/2" high-pressure hose must be attached. This hose comes from the hydraulic pumps pressure side. A 1-1/4" hydraulic suction hose must be installed from the hydraulic reservoir to the hydraulic pump. (See drawing above) Note: For compressors purchased without a reservoir a 3/4" minimum low-pressure return line is connected to the oil cooler outlet and is routed to the oil reservoir. The case drain line from the hydraulic motor is also routed to the oil reservoir. Stellar Industries recommends a sufficient sized reservoir be provided which includes the proper suction and return filters. The cooler on the compressor is designed and sized to cool the air compressor efficiently. An auxillary oil cooler is required when additional hydraulically operated equipment are added to the hydraulic system. Pressure on the return line exceeding 200 PSI can and will cause damage to the filter, cooler, and components of the compressor hydraulic system.

Air System

Two (2) airlines must be routed to the air tank for proper installation. The main airline is routed from the check valve to the air tank using a 3/4"(200psi) air hose. This is the main delivery line and should be free from all obstructions. A 1/4" line is routed from the air pressure valve to the air tank. This line senses the pressure in the tank and will engage and disengage the compressor automatically.



Head Unloading System



LOW PRESSURE MANIFOLD ASSEMBLY

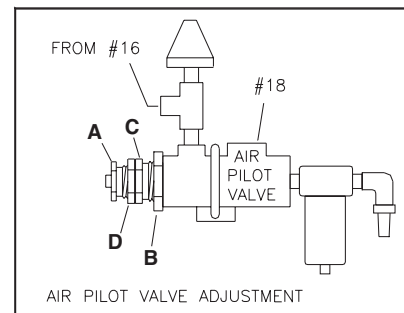
ITEM	PART No.	DESCRIPTION	QTY
01	7468	MANIFOLD, L.P. INTAKE	2
02	7481	CYLINDER	2
03	7482	PISTON	2
04	7483	O-RING	2
05	7471	VALVE ASSEMBLY	2
06	7444	CLAW	2
07	7445	SPRING	2
08	7491	NUT, HEX	2
09	7447	GUIDE STEM	2

HIGH PRESSURE MANIFOLD ASSEMBLY

ITEM	PART No.	DESCRIPTION	QTY
01	7469	MANIFOLD, H.P. INTAKE	2
02	7481	CYLINDER	2
03	7482	PISTON	2
04	7483	O-RING	2
05	7472	VALVE ASSEMBLY	2
06	7489	CLAW	2
07	7490	SPRING	2
08	7491	NUT, HEX	2
09	7492	GUIDE STEM	2
10	7493	GASKET	2
11	7494	GASKET	2

TUBING

ITEM	PART No.	DESCRIPTION	QTY
12	7495	INTERMEDIATE TUBE	1
13	7496	ACTUATING TUBE	1
14	7497	COMPRESSION FTG	1
15	7498	COMPRESSION TEE	3
16	7499	COMPRESSION FTG	1
17	7500	MANIFOLD TUBE	2
18	3853	AIR PILOT VALVE	1



Air Pilot Valve Adjustment

(See Air Pilot Valve Adjustment Detail)

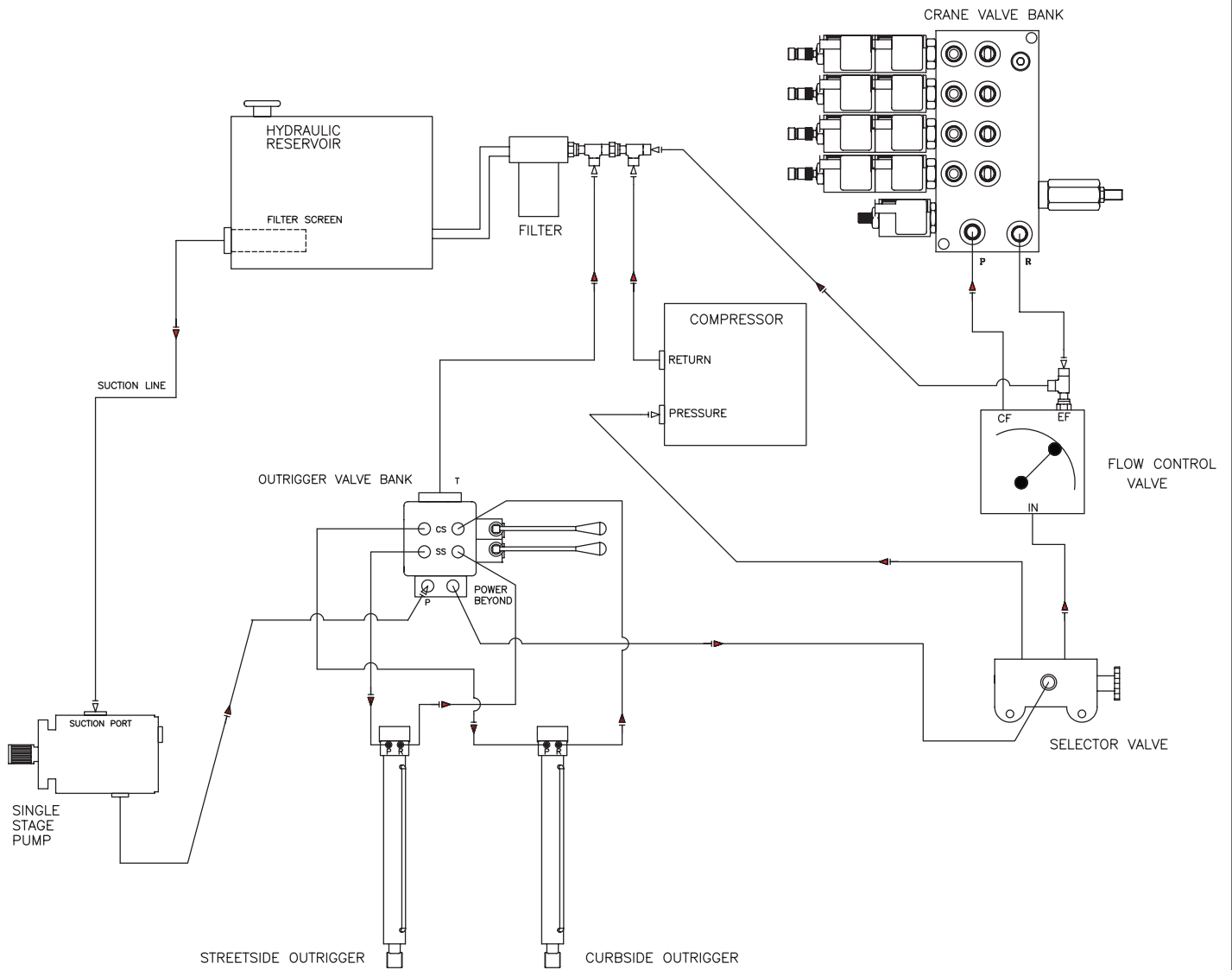
High Pressure Adjustment: Proceed with the following while the compressor is running.

- 1.) Loosen locknut (D) and back off several turns. Do not turn differential adjuster (C).
- 2.) Check reading on the tank pressure gauge. Set the compressor maximum pressure at 175 psi. Over pressurizing compressor will cause damage and void warranty. Turn threaded cap (A) clockwise to increase pressure or counterclockwise to decrease pressure.
- 3.) After pressure is set, tighten locknut (D). Be careful not to move the threaded cap (A).

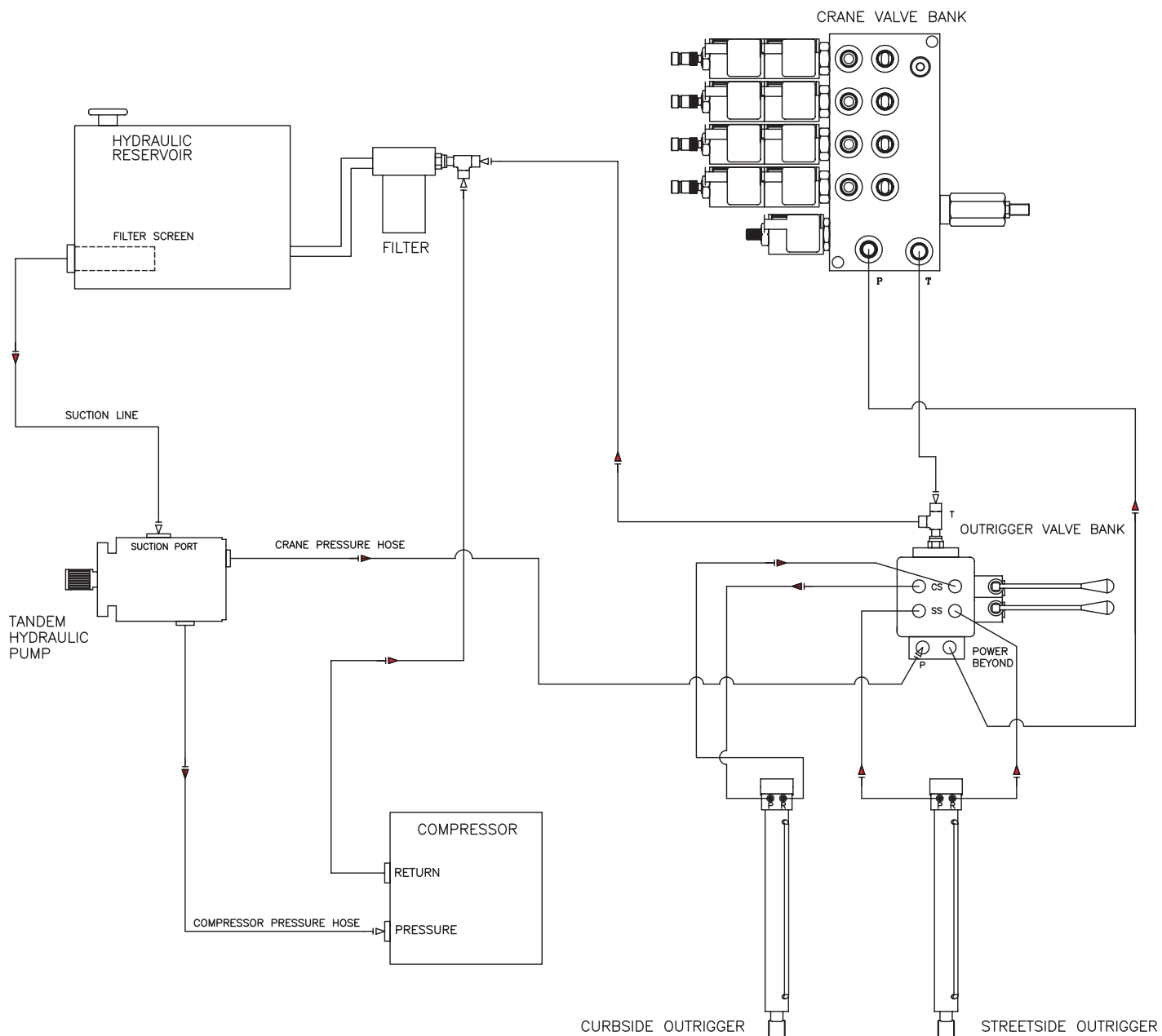
Differential Pressure Adjustment: Proceed with the following while the compressor is running.

- 1.) Loosen locknut (B) and back off several turns.
- 2.) Check reading on the tank pressure gauge. Set the pressure to 30 psi differential (unload at 175 psi, reload at 145 psi). Turn nut (C) clockwise to increase differential pressure or counterclockwise to decrease differential pressure.
- 3.) After pressure is set, tighten locknut (B). Be careful not to move nut (C)

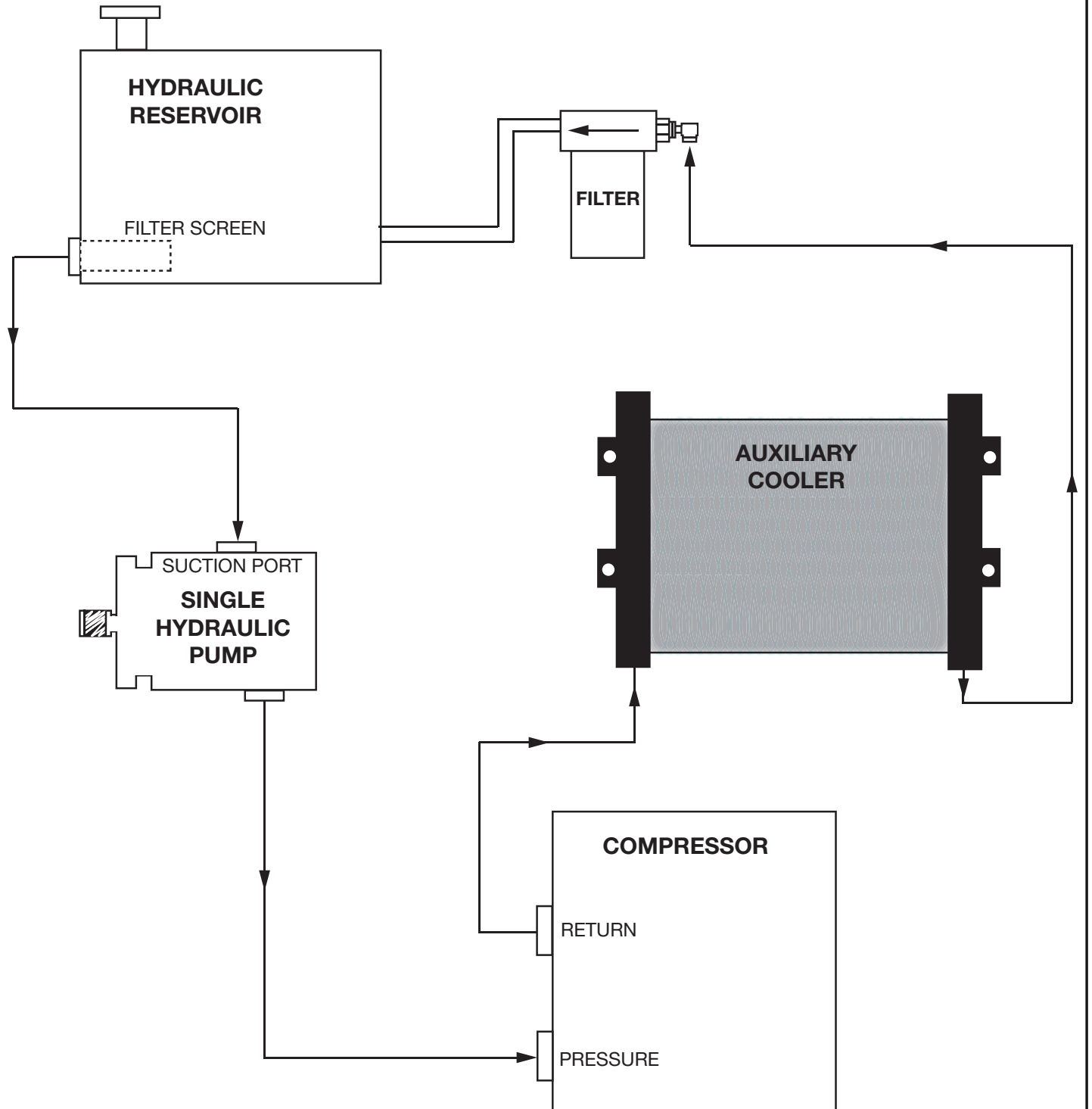
Typical Hydraulic Circuit for Single-Section Pump



Typical Hydraulic Circuit for Tandem (Two Part) Pump



Typical Hydraulic Circuit for Compressor w Aux. Cooler

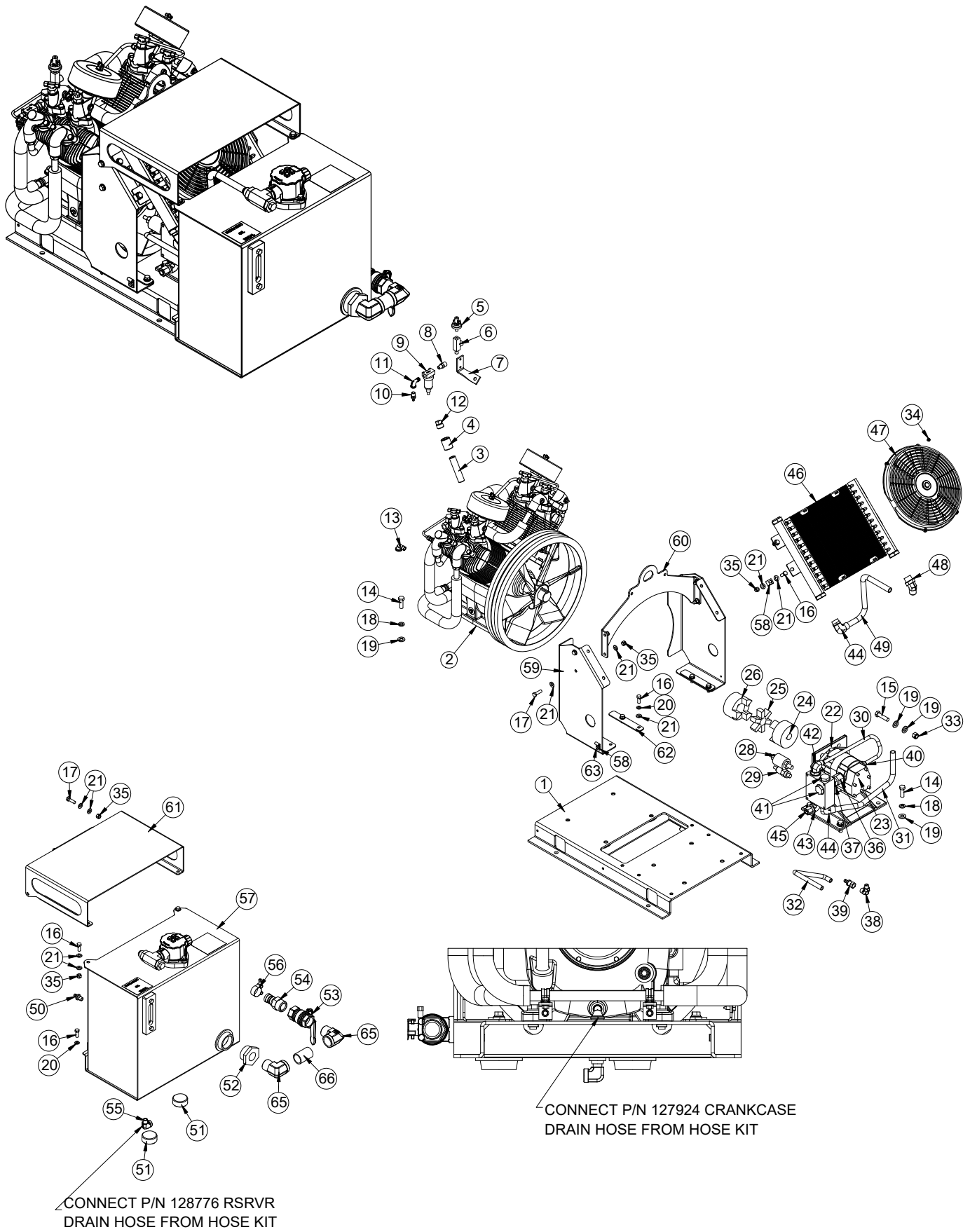


Chapter 3 - Assemblies

Chapter Contents

CPRSR Asm 46P w/Hyd Rsrvr Body Mnt - 138764	12
CPRSR Asm 46P w/Hyd Rsrvr Body Mnt - 138764	13
46P CPRSR Asm w/Hyd RSRVR - PN 138764 Parts List	14
CPRSR Asm 46P w/Hyd RSRVR Crane Mnt - PN 133379.....	16
CPRSR Asm 46P w/Hyd RSRVR Crane Mnt - PN 133379.....	17
46P CPRSR Asm 20 Gal - PN 133379 Parts List - Cont.....	18
CPRSR Asm 46 w/Hyd RSRVR Body Mnt W/Air Tank - PN 138765	20
CPRSR Asm 46 w/Hyd RSRVR Body Mnt W/Air Tank - PN 138765 Parts List	21
CPRSR Asm 46P w/Hyd RSRV Crane Mnt W/Air Tank	22
CPRSR Asm 46P w/Hyd RSRV Crane Mnt W/Air Tank	23
CPRSR Asm 46P 9000 - PN 58970	24
CPRSR Asm 46P 9000 - PN 58970 Parts List.....	25
CPRSR Asm 46P 9000 - PN 58970 Parts List-continued	26
Air Tank Assembly - 20 Gal - PN 43906	28
Air Tank Assembly - 20 Gal - PN 43906 Parts List.....	29
Air Tank Assembly- 20 Gal - PN 43907	30
Air Tank Assembly- 20 Gal - PN 43907	31
Crankcase Group.....	32
Crankshaft Group.....	33
Centrifugal Unloader Group	34
Piston/Rod Group – Low Pressure.....	35
Piston/Rod Group – High Pressure.....	36
Piston/Rod Group – High Pressure Parts List.....	37
Cylinder Group – with Head Unloaders.....	38
Cylinder Group – with Head Unloaders Parts List.....	39
Tubing and Control Group – with Head Unloaders	40
Tubing and Control Group – with Head Unloaders	41

CPRSR Asm 46P w/Hyd Rsrvr Body Mnt - 138764



CPRSR Asm 46P w/Hyd Rsrvr Body Mnt - 138764

PN 138764

ITEM	PART	DESCRIPTION	QTY
1	D0825	BASE WLDMT SHD66DD PC BLACK EL96-41688	1
2	D1346	CPRSR CHMP R30DHU SPECIAL	1
3	4581	FTG 12-12X4.00 MP-MP NIPPLE STRAIGHT BRASS	1
4	10659	CPLR 0.75 BRASS	1
5	C0864	SWITCH PRES HOBBS	1
6	8277	FTG ST L 0.25 MNPT/0.125 FNPT SPL	1
7	4703	BRKT UNLOADER VALVE MNT SHD66DD	1
8	20330	FTG 0.38-0.25 FF HEX NIPPLE	1
9	C5662	FILTER METAL BOWL 0.25	1
10	71406	FTG HOSE 4-4 PL-MP STRAIGHT BRASS	1
11	5418	ST EL 0.25 90 DEG BRASS 44-161	1
12	20327	PLUG 0.75 NPT SQ HD BRASS	1
13	5431	FTG 6-6 MP-FP STREET ELBOW 90 BRASS	1
14	0359	CAP SCR 0.50-13X1.50 HHGR5	8
15	0501	CAP SCR 0.50-13X2.00 HHGR5	2
16	0351	CAP SCR 0.38-16X1.00 HHGR5	12
17	0335	CAP SCR 0.38-16X1.25 HHGR5	6
18	0525	WASHER 0.50 LOCK	8
19	D0790	WASHER 0.50 SAE FLAT YELLOW GR8	12
20	0523	WASHER 0.38 LOCK	6
21	C6353	WASHER 0.38 SAE FLAT YELLOW GR8	28
22	19645	BRKT MOTOR MOUNT 19645 POWDERCOAT	1
23	57195	MOTOR HYD RSB04K-Y4500-A 4.0 CID	1
24	D0791	COUPG 1/4 KW L150-1.00	1
25	D0793	COUPG SPIDER L150-U BLUE URETHANE	1
26	D0792	COUPG 3/8 KW L150-1.75	1
27	C3075	BLOCK AL CPRSR SHD 66	1
28	C4913	VALVE SOLND	1
29	C4914	VALVE RELIEF CP-200-1-B-0-A-C	1
30	58821	TUBE ASM 0.50 PRES SHD66 W/RSMTR ZC	1
31	58822	TUBE ASM 0.75 BTTM CLR SHD66 W/RSMTR ZC	1
32	26480	HOSE 0.38X14.00 RED ORTAC GDYR	1
33	C6106	NUT 0.50-13 HHGR5 NYLOC	2
34	26034	NUT #10-24 HH NYLOC	4
35	0347	NUT 0.38-16 HHGR5 NYLOC	12
36	10973	FTG 12-12 MORB-FORB STRAIGHT REDUCER	1
37	C5549	FTG 12-12 MAORB-ORB STRAIGHT	1
38	C0338	FTG 6-6 MFS-MAORB 90	1
39	52474	FTG HOSE 6-6 FFSS-PL SHORT	1
40	D1189	FTG 8-12 MJ-MORB STRAIGHT	1
41	C6015	FTG 0.75 PLUG 12-P50N	2

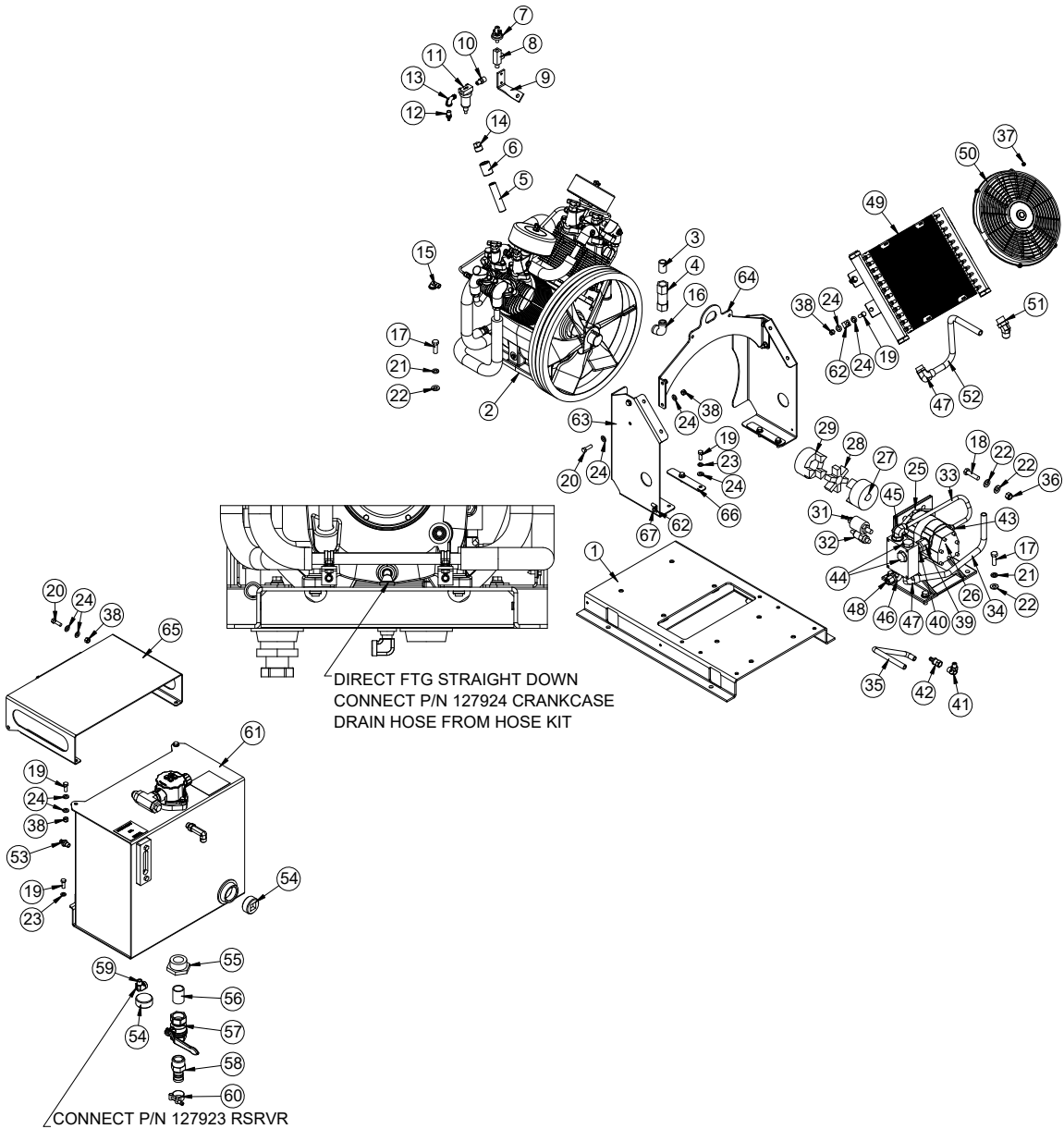
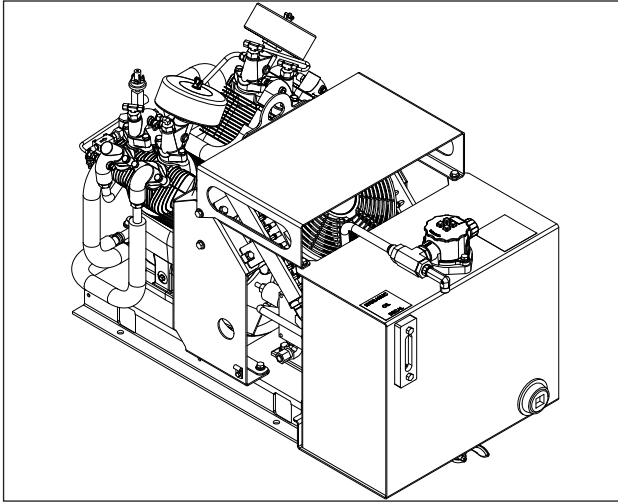
46P CPRSR Asm w/Hyd RSRVR - PN 138764 Parts List

PN 138764			
ITEM	PART	DESCRIPTION	QTY
42	C4671	FTG 8-12 MJ-MAORB 90	1
43	C4227	FTG 8-12 MFS-MAORB 90	1
44	C6145	FTG 12-12 MJ-MAORB 90	2
45	2772	CAP 8FNL-S	1
46	C1129	COOLER OIL 24 GPM MAX FLOW	1
47	D0840	FAN 12.00 PUSH 12 VOLT SPL 301003	1
48	D1116	FTG 12-12 MJ-MAORB 45	1
49	134006	TUBE ASM 0.75 RETURN 46P YZ	1
50	71403	FTG HOSE 6-4 PL-MP STRAIGHT BRASS	1
51	5594	PLUG 2.00 NPT SQ HD CS BLK	2
52	10967	FTG 32-20 MP-FP REDUCER BUSHING	1
53	C5511	VALVE BALL 1.25	1
54	C2282	FTG 1.25 NPT TO 1.25 BARB	1
55	0553	FTG 6-6 MP-FP STREET ELBOW 90	1
56	C0075	HOSE CLAMP HC125	1
57	133374	RSRVR ASM 16GAL 46P V2	1
58	31279	CLAMP 0.31D 0.75W 0.40HL GALV BLKVINYL	2
59	134002	PLATE SHROUD CPRSR ASM 46P LEFT	1
60	134004	PLATE LIFT EYE CPRSR ASM 46P	1
61	134005	PLATE COVER CPRSR ASM 46P	1
62	134008	PLATE WASHER CPRSR ASM 46P	2
63	D0613	SCREW SELF TAP #14X0.75 HWH SLOTTD	1
64	134003	PLATE SHROUD CPRSR ASM 46P RIGHT	1
65	C6152	FTG 20-20 MP-FP STREET ELBOW 90	2
66	20462	FTG 20-20X2.50 MP-MP NIPPLE STRAIGHT BRASS	1
REV. INITIAL RELEASE			

ITEMS NOT SHOWN IN DRAWING		
PART	DESCRIPTION	QTY
11144	WIRE HRNS CPRSR SHD66	1
128771	HOSE KIT 46P W/RSRVR 20GAL BODY MNT	1
12825	OIL HYD BULK	1

This page left intentionally blank.

CPRSR Asm 46P w/Hyd RSRVR Crane Mnt - PN 133379



CPRSR Asm 46P w/Hyd RSRVR Crane Mnt - PN 133379

PN 133379			
ITEM	PART	DESCRIPTION	QTY
1	D0825	BASE WLDMT SHD66DD PC BLACK EL96-41688	1
2	D1346	CPRSR CHMP R30DHU SPECIAL	1
3	D1264	FTG 0.75-CLOSE RED BRASS NIPPLE	1
4	5480	VALVE CHECK 0.75 STANDARD	1
5	4581	FTG 12-12X4.00 MP-MP NIPPLE STRAIGHT BRASS	1
6	10659	CPLR 0.75 BRASS	1
7	C0864	SWITCH PRES HOBBS	1
8	8277	FTG ST L 0.25 MNPT/0.125 FNPT SPL	1
9	4703	BRKT UNLOADER VALVE MNT SHD66DD	1
10	20330	FTG 0.38-0.25 FF HEX NIPPLE	1
11	C5662	FILTER METAL BOWL 0.25	1
12	71406	FTG HOSE 4-4 PL-MP STRAIGHT BRASS	1
13	5418	ST EL 0.25 90 DEG BRASS 44-161	1
14	20327	PLUG 0.75 NPT SQ HD BRASS	1
15	5431	FTG 6-6 MP-FP STREET ELBOW 90 BRASS	1
16	D1267	FTG .75X90 DEG ST EL BRASS 44164	1
17	0359	CAP SCR 0.50-13X1.50 HHGR5	8
18	0501	CAP SCR 0.50-13X2.00 HHGR5	2
19	0351	CAP SCR 0.38-16X1.00 HHGR5	12
20	0335	CAP SCR 0.38-16X1.25 HHGR5	6
21	0525	WASHER 0.50 LOCK	8
22	D0790	WASHER 0.50 SAE FLAT YELLOW GR8	12
23	0523	WASHER 0.38 LOCK	6
24	C6353	WASHER 0.38 SAE FLAT YELLOW GR8	28
25	19645	BRKT MOTOR MOUNT 19645 POWDERCOAT	1
26	57195	MOTOR HYD RSB04K-Y4500-A 4.0 CID	1
27	D0791	COUPG 1/4 KW L150-1.00	1
28	D0793	COUPG SPIDER L150-U BLUE URETHANE	1
29	D0792	COUPG 3/8 KW L150-1.75	1
30	C3075	BLOCK AL CPRSR SHD 66	1
31	C4913	VALVE SOLND	1
32	C4914	VALVE RELIEF CP-200-1-B-0-A-C	1
33	58821	TUBE ASM 0.50 PRES SHD66 W/RSMTR ZC	1
34	58822	TUBE ASM 0.75 BTTM CLR SHD66 W/RSMTR ZC	1
35	26480	HOSE 0.38X14.00 RED ORTAC GDYR	1
36	C6106	NUT 0.50-13 HHGR5 NYLOC	2
37	26034	NUT #10-24 HH NYLOC	4
38	0347	NUT 0.38-16 HHGR5 NYLOC	12
39	10973	FTG 12-12 MORB-FORB STRAIGHT REDUCER	1
40	C5549	FTG 12-12 MAORB-ORB STRAIGHT	1
41	C0338	FTG 6-6 MFS-MAORB 90	1
42	52474	FTG HOSE 6-6 FFSS-PL SHORT	1

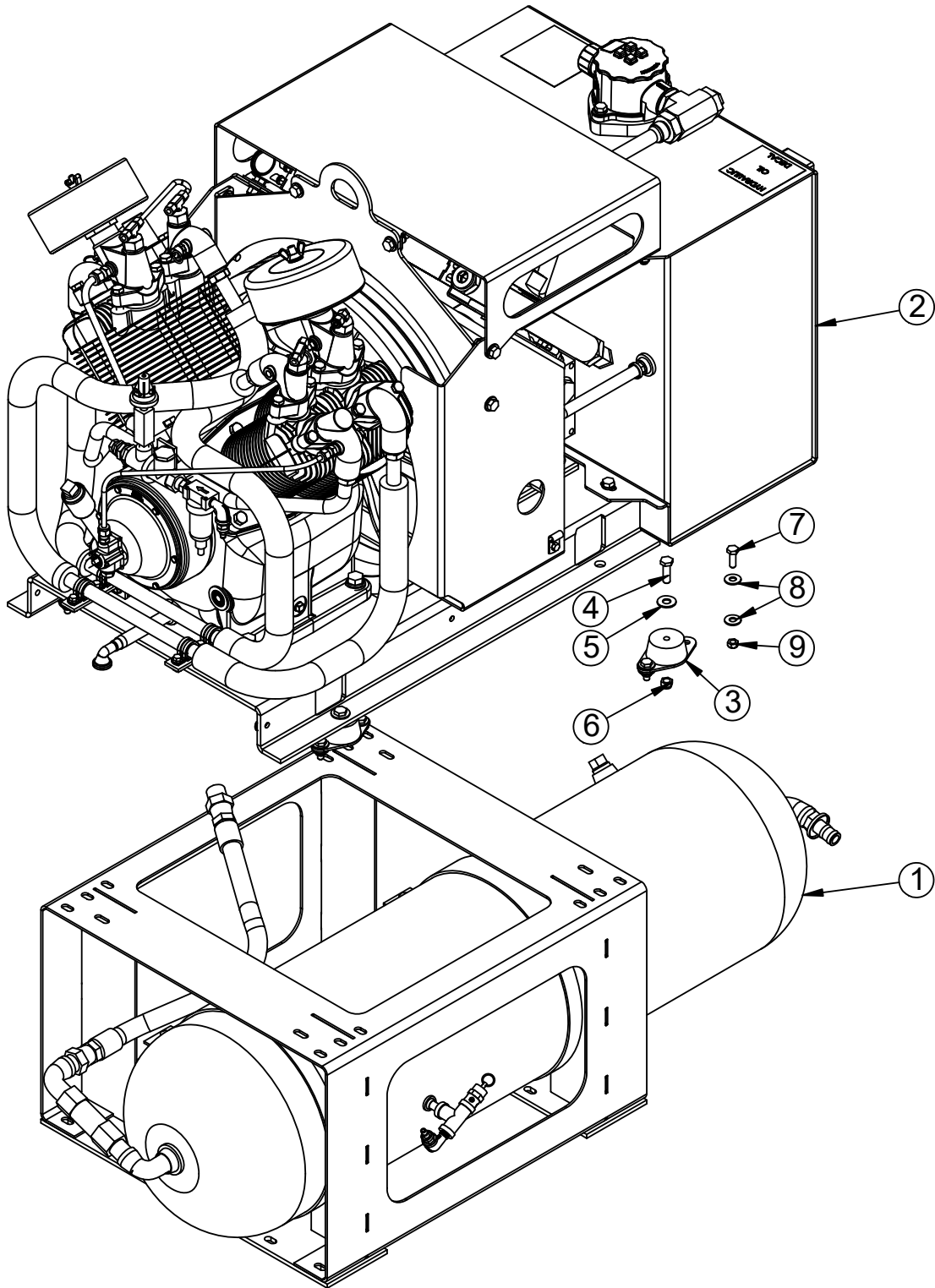
46P CPRSR Asm 20 Gal - PN 133379 Parts List - Cont.

PN 133379			
ITEM	PART	DESCRIPTION	QTY
43	D1189	FTG 8-12 MJ-MORB STRAIGHT	1
44	C6015	FTG 0.75 PLUG 12-P5ON	2
45	C4671	FTG 8-12 MJ-MAORB 90	1
46	C4227	FTG 8-12 MFS-MAORB 90	1
47	C6145	FTG 12-12 MJ-MAORB 90	2
48	2772	CAP 8FNL-S	1
49	C1129	COOLER OIL 24 GPM MAX FLOW	1
50	D0840	FAN 12.00 PUSH 12 VOLT SPL 301003	1
51	D1116	FTG 12-12 MJ-MAORB 45	1
52	134006	TUBE ASM 0.75 RETURN 46P YZ	1
53	71403	FTG HOSE 6-4 PL-MP STRAIGHT BRASS	1
54	5594	PLUG 2.00 NPT SQ HD CS BLK	2
55	10967	FTG 32-20 MP-FP REDUCER BUSHING	1
56	22870	FTG 20-20 MP-MP NIPPLE STRAIGHT BRASS	1
57	C5511	VALVE BALL 1.25	1
58	C2282	FTG 1.25 NPT TO 1.25 BARB	1
59	0553	FTG 6-6 MP-FP STREET ELBOW 90	1
60	C0075	HOSE CLAMP HC125	1
61	133374	RSRVR ASM 16GAL 46P V2	1
62	31279	CLAMP 0.31D 0.75W 0.40HL GALV BLK VINYL	2
63	134002	PLATE SHROUD CPRSR ASM 46P LEFT	1
64	134004	PLATE LIFT EYE CPRSR ASM 46P	1
65	134005	PLATE COVER CPRSR ASM 46P	1
66	134008	PLATE WASHER CPRSR ASM 46P	2
67	D0613	SCREW SELF TAP #14X0.75 HWH SLOTTD	1
68	101389	FTG 8-8 MFS-MAORB 90 LONG	1
69	134003	PLATE SHROUD CPRSR ASM 46P RIGHT	1
REV. INITIAL RELEASE			

ITEMS NOT SHOWN IN DRAWING		
PART	DESCRIPTION	QTY
11144	WIRE HRNS CPRSR SHD66	1
127818	HOSE KIT 46P W/RSRVR 20GAL CRN MNT	1
12825	OIL HYD BULK	1

This page left intentionally blank.

CPRSR Asm 46 w/Hyd RSRVR Body Mnt w/Air Tank - PN 138765



CPRSR Asm 46 w/Hyd RSRVR Body Mnt w/Air Tank - PN 138765 Parts List

PN 138765

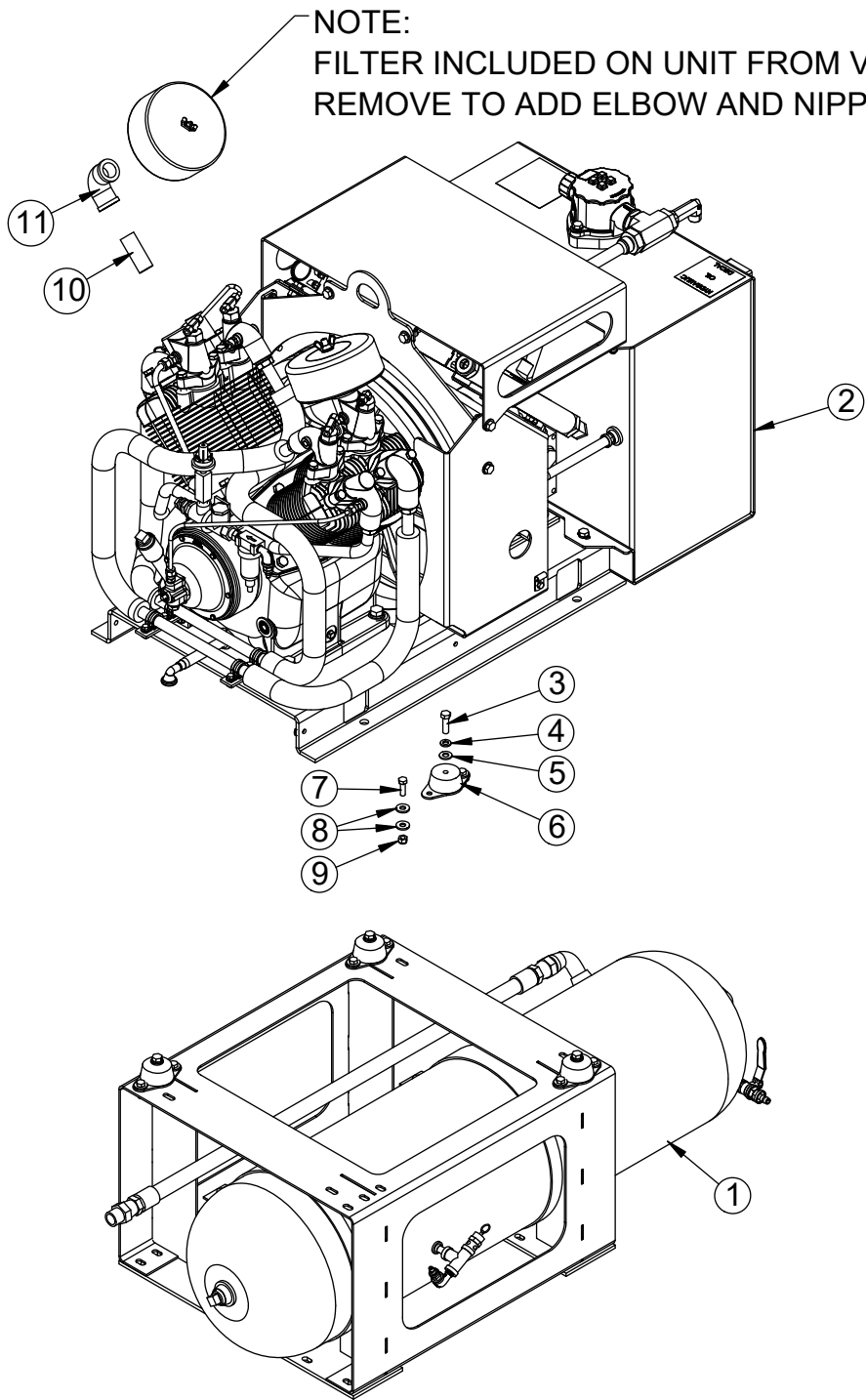
ITEM	PART	DESCRIPTION	QTY
1	43906	AIR TANK ASM 20 GAL W/FTG BODY MNT	1
2	138764	CPRSR ASM 46P W/HYD RSRVR 1302 MNT	1
3	6595	VIBRAT INSULATOR 250# MCMaster-CAR	4
4	0335	CAP SCR 0.38-16X1.25 HHGR5	4
5	C6353	WASHER 0.38 FLAT GR8	4
6	0347	NUT 0.38-16 HH NYLOC	4
7	C0922	CAP SCR 0.31-18X1.00 HHGR5	8
8	0343	WASHER 0.31 USS FLAT ZINC	16
9	0342	NUT 0.31-18 HH NYLOC	8

REV. INITIAL RELEASE

ITEMS NOT SHOWN

PART	DESCRIPTION	QTY.
8998	DECAL AIR DRAIN	1

CPRSR Asm 46P w/Hyd RSRV Crane Mnt W/Air Tank PN 134274

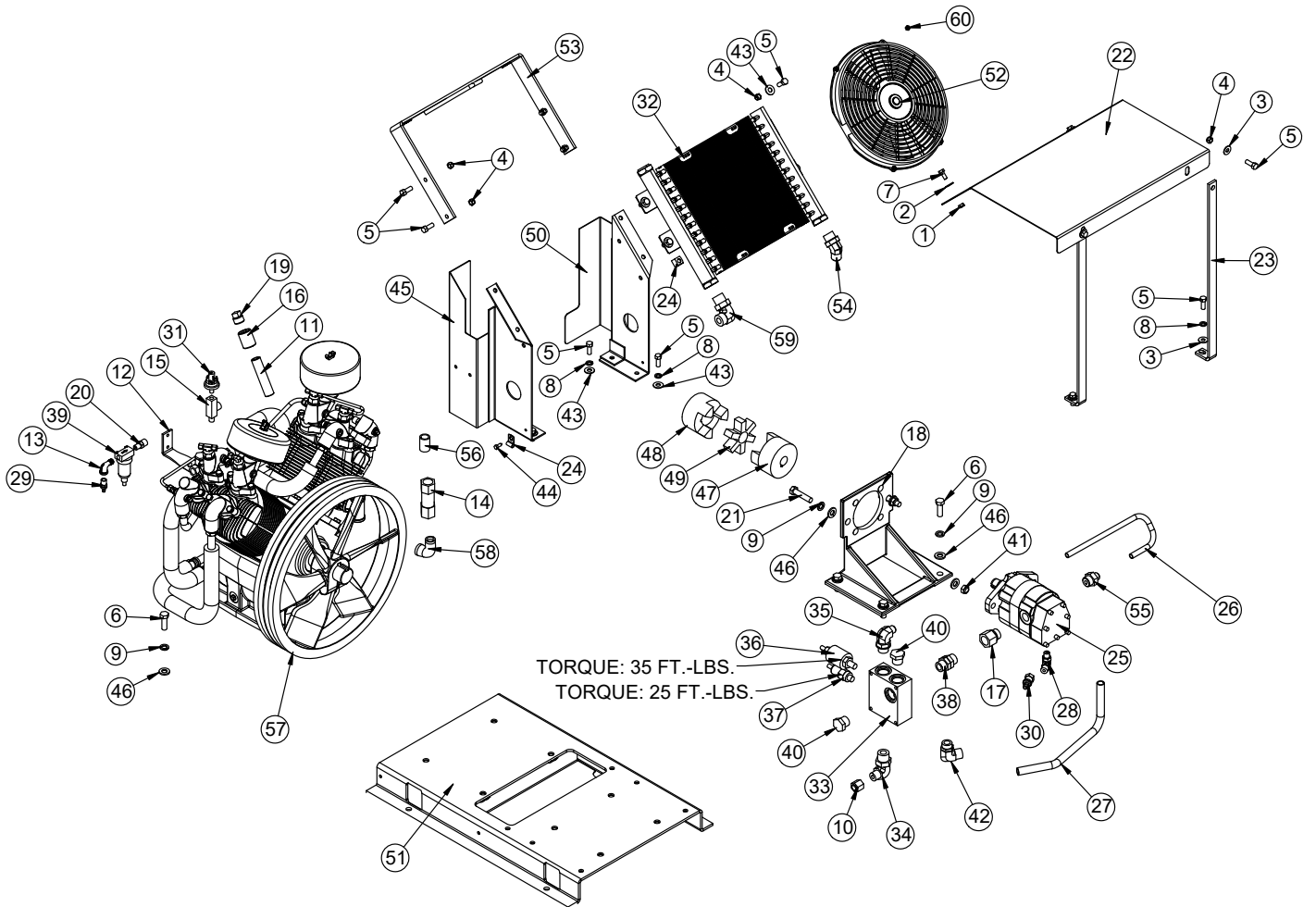
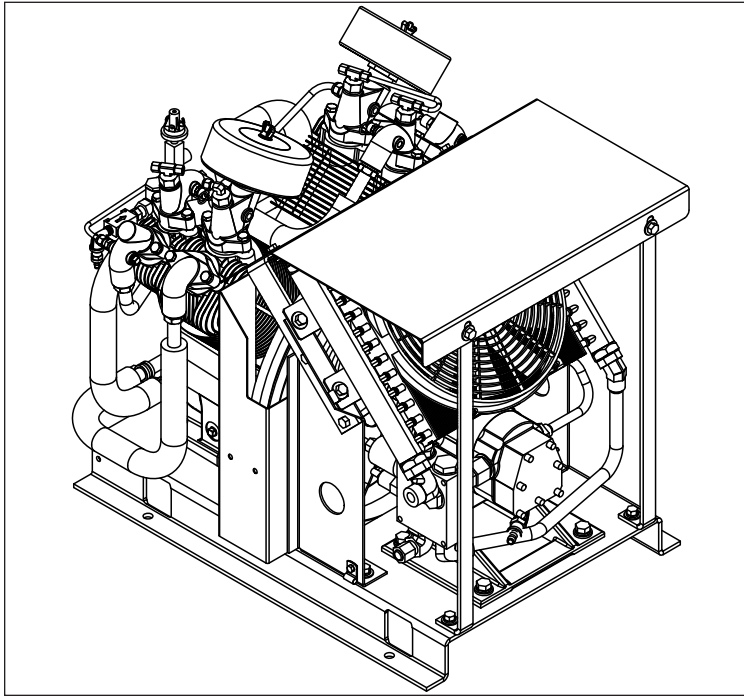


CPRSR Asm 46P w/Hyd RSRV Crane Mnt W/Air Tank PN 134274 Parts List

PN 134274			
ITEM	PART	DESCRIPTION	QTY
1	43907	AIR TANK ASM 20 GAL W/FTG CRANE MNT	1
2	133379	CPRSR ASM 46P W/RSM W/RSRVR V2 20 GAL	1
3	0335	CAP SCR 0.38-16X1.25 HHGR5	4
4	0523	WASHER 0.38 LOCK	4
5	C6353	WASHER 0.38 SAE FLAT YELLOW GR8	4
6	8656	VIBRAT INSULATOR 480# MCMASTER-CAR	4
7	C0922	CAP SCR 0.31-18X1.00 HHGR5	8
8	0343	WASHER 0.31 USS FLAT	16
9	0342	NUT 0.31-18 HHGR5 NYLOC	8
10	D1265	FTG 16-16X2.50 MP-MP NIPPLE STRAIGHT BRASS	1
11	4555	FTG 16-16 FP-FP 90 BRASS	1
REV. INITIAL RELEASE			

ITEMS NOT SHOWN		
PART	DESCRIPTION	QTY
8998	DECAL AIR DRAIN	1

CPRSR Asm 46P 9000 - PN 58970



CPRSR Asm 46P 9000 - PN 58970 Parts List

PN 58970			
ITEM	PART	DESCRIPTION	QTY
1	0342	NUT 0.31-18 HH NYLOC	2
2	0343	WASHER 0.31 USS FLAT ZINC	2
3	0346	WASHER 0.38 FLAT	4
4	0347	NUT 0.38-16 HH NYLOC	10
5	0351	CAP SCR 0.38-16X1.00 HHGR5	16
6	0359	CAP SCR 0.50-13X1.50 HHGR5	8
7	0420	CAP SCR 0.31-18X0.75 HHGR5	2
8	0523	WASHER 0.38 LOCK	6
9	0525	WASHER 0.50 LOCK	10
10	2772	CAP 8FNL-S	1
11	4581	FTG 12-12X4.00 MP-MP NIPPLE STRAIGHT BRASS	1
12	4703	BRKT UNLOADER VALVE MNT SHD66DD	1
13	5418	ST EL 0.25 90 DEG BRASS 44-161	1
14	5480	VALVE CHECK 0.75 STANDARD	1
15	8277	FTG ST L 0.25 MNPT/0.125 FNPT SPL	1
16	10659	CPLR 0.75 BRASS	1
17	10973	FTG 12-12 MORB-FORB STRAIGHT REDUCER	1
18	19645	BRKT MOTOR MOUNT 19645 POWDERCOAT	1
19	20327	PLUG 0.75 NPT SQ HD BRASS	1
20	20330	FTG 0.38-0.25 FF HEX NIPPLE	1
21	26025	CAP SCR 0.50-13X2.25 HHGR5	2
22	29227	COVER SHD66DD FAN 9000 PC BLACK	1
23	29228PC	BRKT CPRSR ASM SHD66 9000 PC BLACK	2
24	31279	CLAMP 0.31D 0.75W 0.40HL GALV BLK VINYL	2
25	57195	MOTOR HYD RSB04K-Y4500-A 4.0 CID	1
26	58821	TUBE ASM 0.50 PRES SHD66 W/RSMTR ZC	1
27	58822	TUBE ASM 0.75 BTM CLR SHD66 W/RSMTR ZC	1
28	C0338	FTG 6-6 MFS-MAORB 90	1
29	71406	FTG HOSE 4-4 PL-MP STRAIGHT BRASS	1
30	52474	FTG HOSE 6-6 FFSS-PL SHORT	1
31	C0864	SWITCH PRES HOBBS	1
32	C1129	COOLER OIL 24 GPM MAX FLOW	1
33	C3075	BLOCK AL CPRSR SHD 66	1
34	C4227	FTG 8-12 MFS-MAORB 90	1
35	C4671	FTG 8-12 MJ-MAORB 90	1
36	C4913	VALVE SOLND	1
37	C4914	VALVE RELIEF CP-200-1-B-0-A-C	1
38	C5549	FTG 12-12 MAORB-ORB STRAIGHT	1
39	C5662	FILTER METAL BOWL 0.25	1
40	C6015	FTG 0.75 PLUG 12-P5ON	2
41	C6106	NUT 0.50-13 HHGR5 NYLOC	2
42	C6145	FTG 12-12 MJ-MAORB 90	1

CPRSR Asm 46P 9000 - PN 58970 Parts List-continued

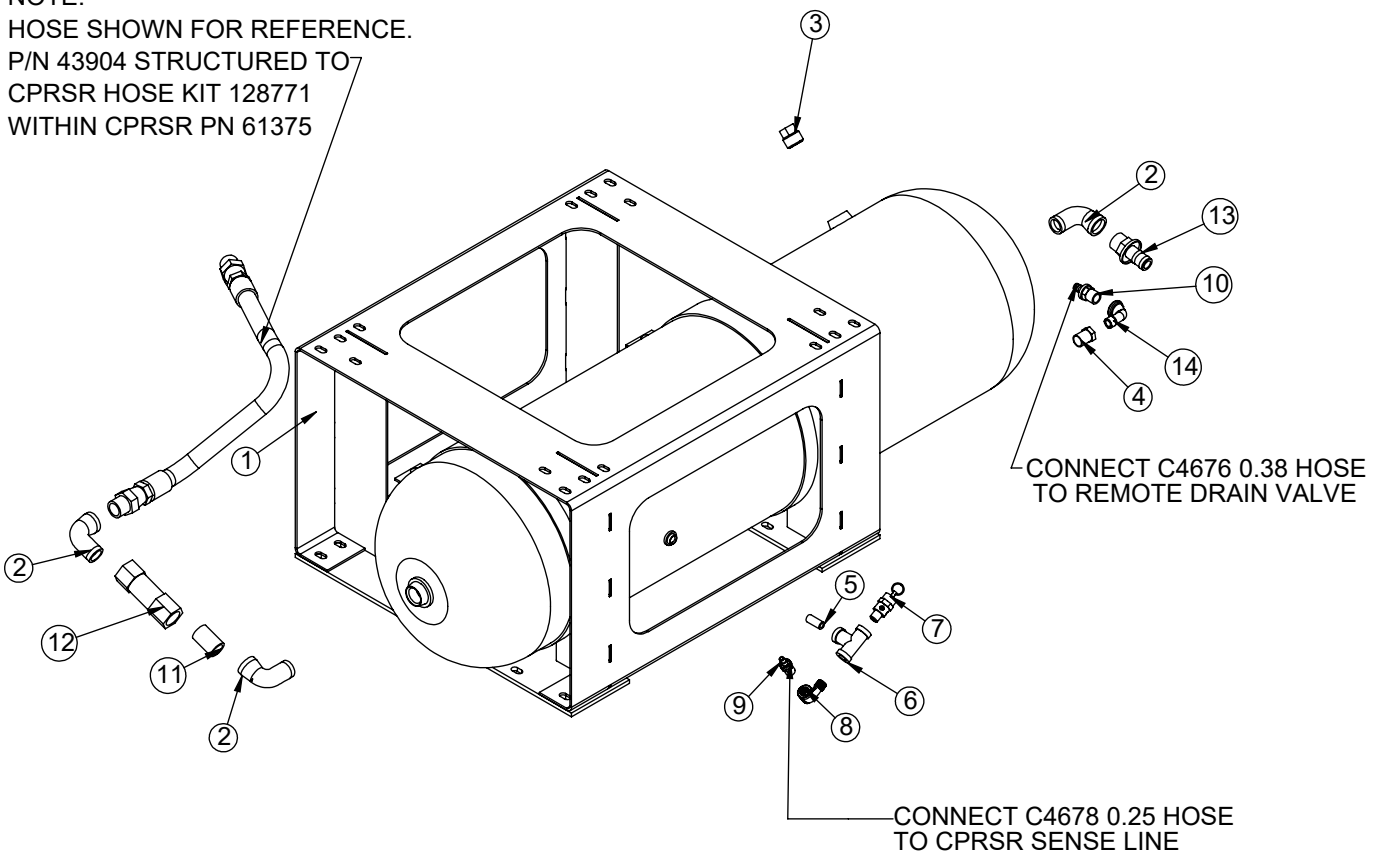
PN 58970			
ITEM	PART	DESCRIPTION	QTY
43	C6353	WASHER 0.38 FLAT GR8	8
44	D0613	SCREW SELF TAP #14X0.75 HWH SLOTTD	1
45	D0786	BRKT WLDMT COOLER MNT LH SHD66DD	1
46	D0790	WASHER 0.50 FLAT GR8	12
47	D0791	COUPG 1/4 KW L150-1.00 TWO SET SCREWS	1
48	D0792	COUPG 3/8 KW L150-1.75	1
49	D0793	COUPG SPIDER L150-U BLUE URETHANE	1
50	D0824	BRKT WLDMT COOLER MNT RH SHD66DD	1
51	D0825	BASE WLDMT SHD66DD PC BLACK EL96-41688	1
52	D0840	FAN 12.00 PUSH 12 VOLT SPL 301003	1
53	D0856	BRKT LIFT SHD66DD	1
54	D1116	FTG 12-12 MJ-MAORB 45	1
55	D1189	FTG 8-12 MJ-MORB STRAIGHT	1
56	D1264	FTG 0.75-CLOSE RED BRASS NIPPLE	1
57	D1346	CPRSR CHMP R30DHU SPECIAL	1
58	D1267	FTG .75X90 DEG ST EL BRASS 44164	1
59	C5968	FTG 12-12 MFS-MAORB 90	1
60	26034	NUT #10-24 HH NYLOC	4
REV. G			

ITEMS NOT SHOWN		
PART	DESCRIPTION	QTY
C4676	HOSE PL 0.38 (RM) MULTIPURPOSE BLACK	5
C4678	HOSE PL 0.25 (RM) MULTIPURPOSE BLACK	15
12825	OIL HYD BULK	1
11144	WIRE HRNS CPRSR SHD66	1

This page left intentionally blank.

Air Tank Assembly - 20 Gal - PN 43906

NOTE:
HOSE SHOWN FOR REFERENCE.
P/N 43904 STRUCTURED TO
CPRSR HOSE KIT 128771
WITHIN CPRSR PN 61375



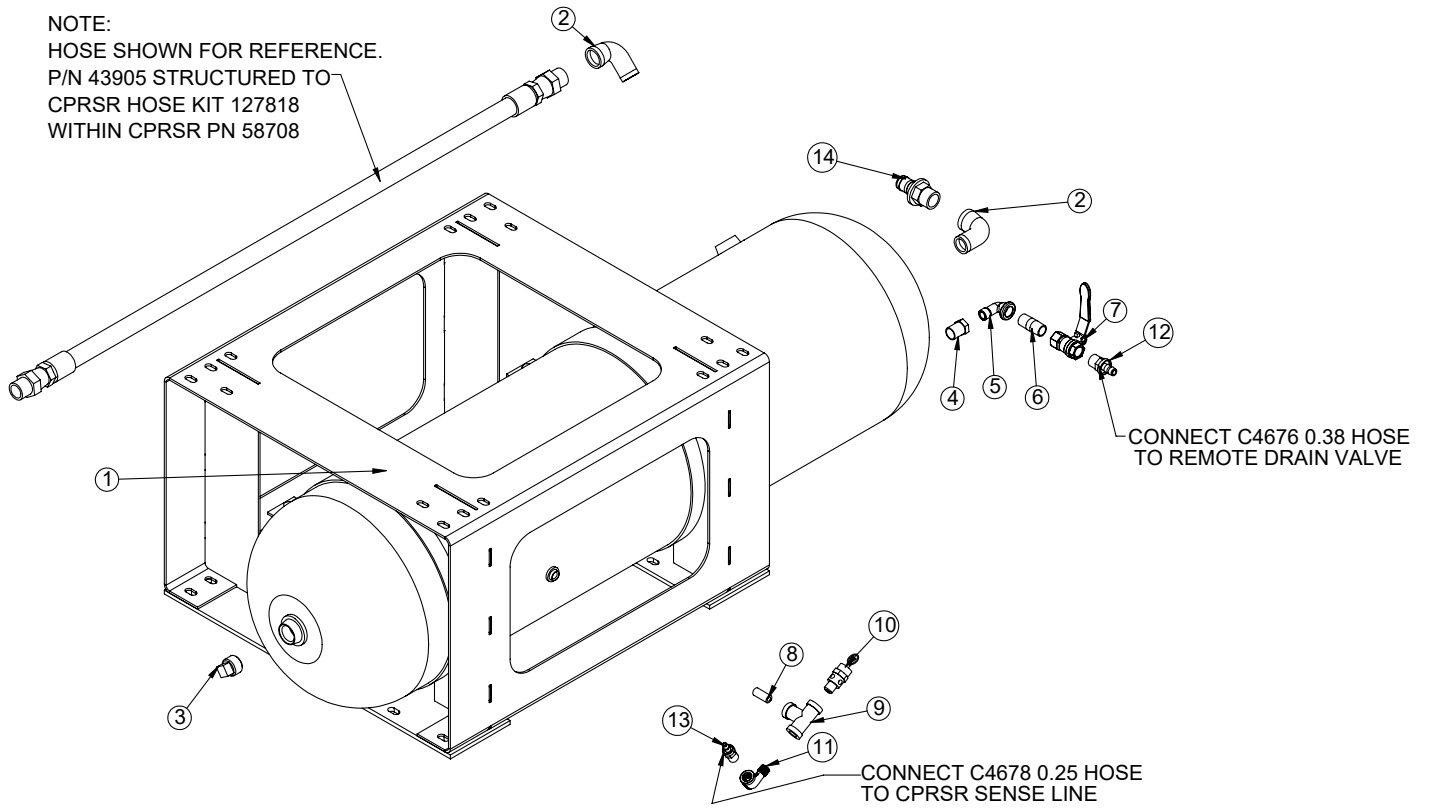
Air Tank Assembly - 20 Gal - PN 43906 Parts List

PN 43906			
ITEM	PART	DESCRIPTION	QTY
1	45384	AIR TANK 20G W STAND	1
2	D1267	FTG .75X90 DEG ST EL BRASS 44164	3
3	20327	PLUG 0.75 NPT SQ HD BRASS	1
4	30311	BUSHING 0.50X0.38 BRASS HEX	1
5	8158	FTG 4-4XCLOSE MP-MP NIPPLE STRAIGHT BRASS	1
6	5917	FTG 4-4-4 FP-FP-FP TEE BRASS	1
7	C5504	VALVE RELIEF 200#	1
8	5418	ST EL 0.25 90 DEG BRASS 44-161	1
9	71406	FTG HOSE 4-4 PL-MP STRAIGHT BRASS	1
10	71405	FTG HOSE 6-6 PL-MP STRAIGHT BRASS	1
11	D1264	FTG 0.75-CLOSE RED BRASS NIPPLE	1
12	5480	VALVE CHECK 0.75 STANDARD	1
13	71402	FTG HOSE 12-12 PL-MP STRAIGHT BRASS	1
14	5431	FTG 6-6 MP-FP STREET ELBOW 90 BRASS	1
REV. D			

ITEMS NOT SHOWN		
PART	DESCRIPTION	QTY
8843	DECAL EXPLODING TANK	1
C4676	HOSE PL 0.38 MULTIPURPOSE BLACK	8
C4678	HOSE PL 0.25 MULTIPURPOSE BLACK	6

Air Tank Assembly- 20 Gal - PN 43907

NOTE:
HOSE SHOWN FOR REFERENCE.
P/N 43905 STRUCTURED TO
CPRSR HOSE KIT 127818
WITHIN CPRSR PN 58708



Air Tank Assembly- 20 Gal - PN 43907

PN 43907

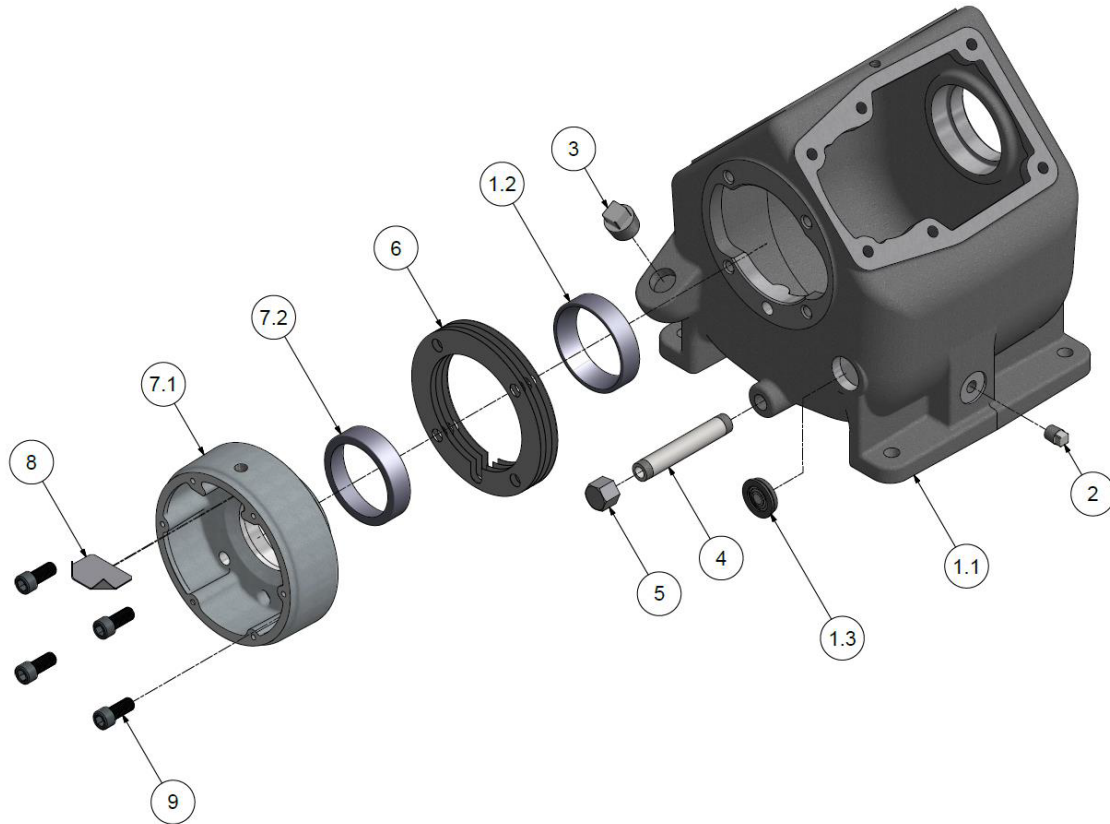
ITEM	PART	DESCRIPTION	QTY
1	45384	AIR TANK 20G W STAND	1
2	D1267	FTG .75X90 DEG ST EL BRASS 44164	2
3	20327	PLUG 0.75 NPT SQ HD BRASS	1
4	30311	BUSHING 0.50X0.38 BRASS HEX	1
5	5431	FTG 6-6 MP-FP STREET ELBOW 90 BRASS	1
6	21661	FTG 6-6XCLOSE MP-MP NIPPLE STRAIGHT BRASS	1
7	C5509	VALVE BALL 0.38 S95-C41	1
8	8158	FTG 4-4XCLOSE MP-MP NIPPLE STRAIGHT BRASS	1
9	5917	FTG 4-4-4 FP-FP-FP TEE BRASS	1
10	C5504	VALVE RELIEF 200#	1
11	5418	ST EL 0.25 90 DEG BRASS 44-161	1
12	71405	FTG HOSE 6-6 PL-MP STRAIGHT BRASS	1
13	71406	FTG HOSE 4-4 PL-MP STRAIGHT BRASS	1
14	71402	FTG HOSE 12-12 PL-MP STRAIGHT BRASS	1

REV. B

ITEMS NOT SHOWN

PART	DESCRIPTION	QTY
8843	DECAL EXPLODING TANK	1
C4676	HOSE PL 0.38 MULTIPURPOSE BLACK	8
C4678	HOSE PL 0.25 MULTIPURPOSE BLACK	6

Crankcase Group



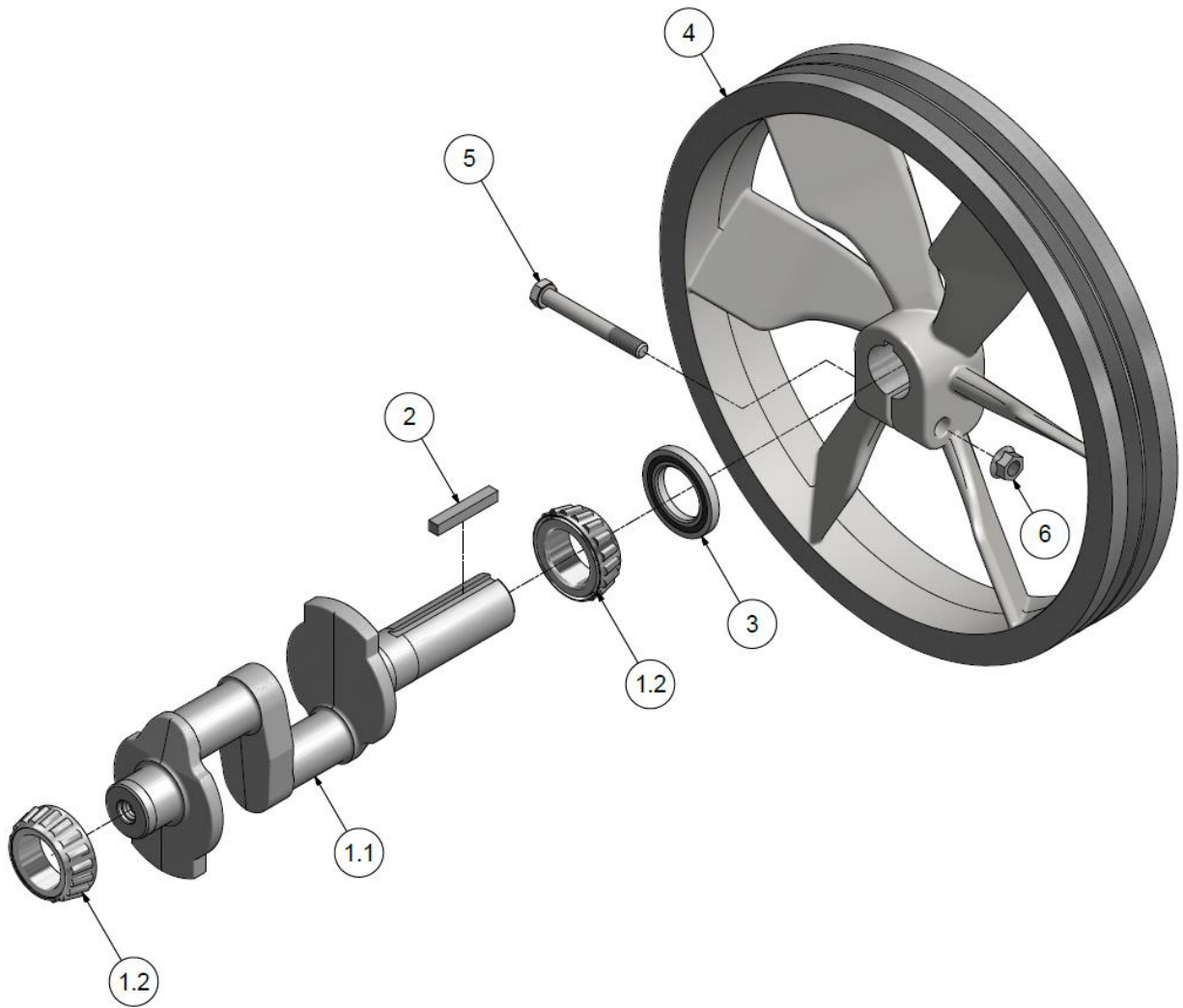
ITEM	PART	DESCRIPTION	QTY	STELLAR P/N
1.1	M1898	CRANKCASE	1	6082
1.2	NR2016*	MAIN BEARING, CUP	1	-
1.3	RE714	OIL LEVEL GAUGE	1	4561
2	64AA5	PLUG	1	-
3	64A5	PLUG	1	-
4	M492	NIPPLE	1	6085
5	M461	CAP	1	6086
6	SE3030*	GASKET, 0.032	1	-
6	SE3030A*	GASKET, 0.005	1	-
6	SE3030B*	GASKET, 0.010	1	-
6	SE3030C*	GASKET, 0.015	1	-
7.1	P12273C	GOVERNOR HOUSING	1	124237
7.2	NR2016*	MAIN BEARING, CUP	1	-
8	P12381A	PLATE, GOVERNOR BAFFLE	1	-
9	M3690	SCREW (TORQUE @ 550 IN-LBS)	4	-

***NOT SOLD SEPARATELY - SEE REPAIR PARTS LIST**

REPAIR PARTS LIST

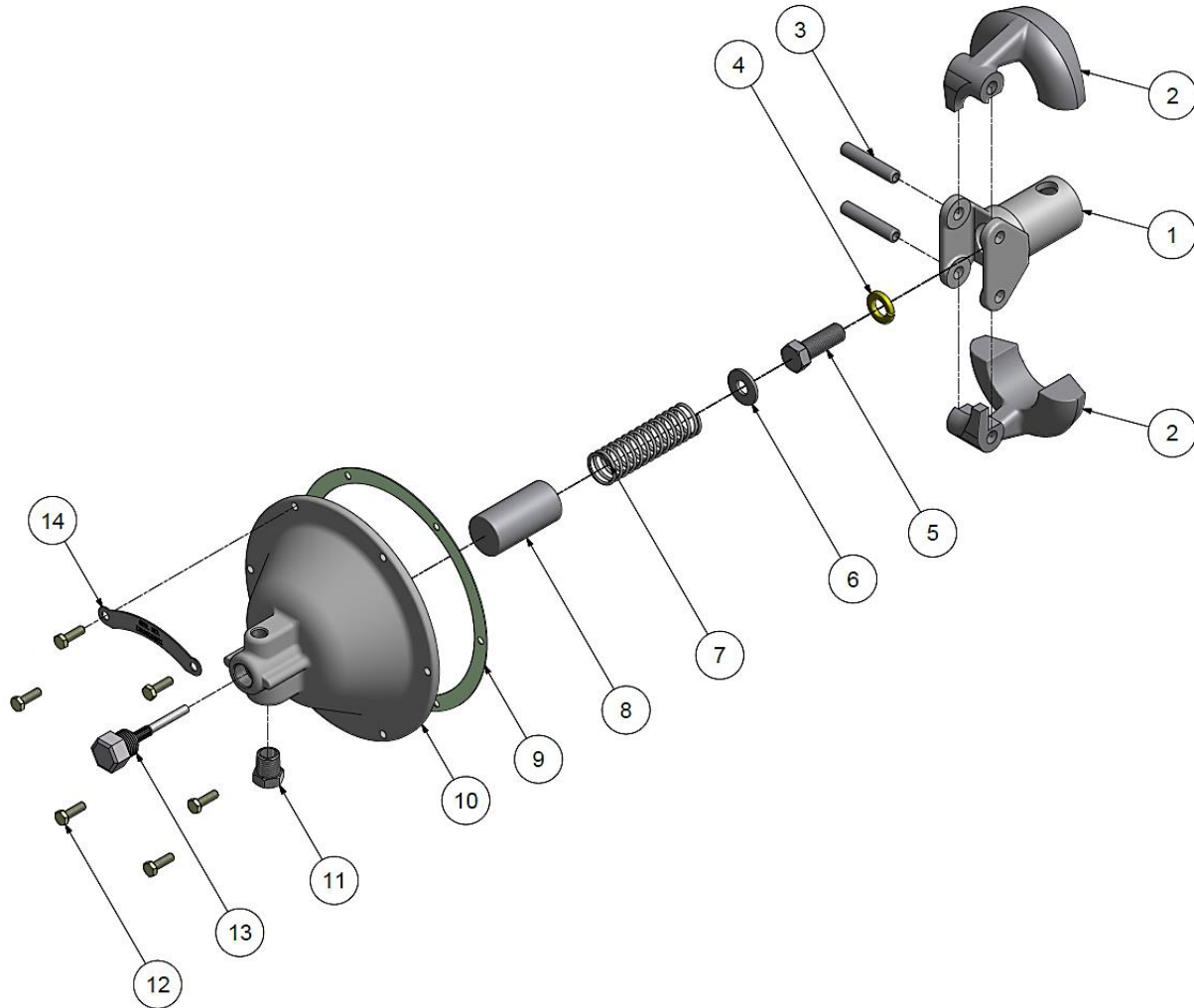
1.2	Z8981	MAIN BEARING	2	7429
7.2				
6	Z3030	GOVERNOR HOUSING GASKET SET	1	6087
	Z10887	COMPRESSOR GASKET SET (EXCLUDES VALVE GASKETS)	1	124238

Crankshaft Group



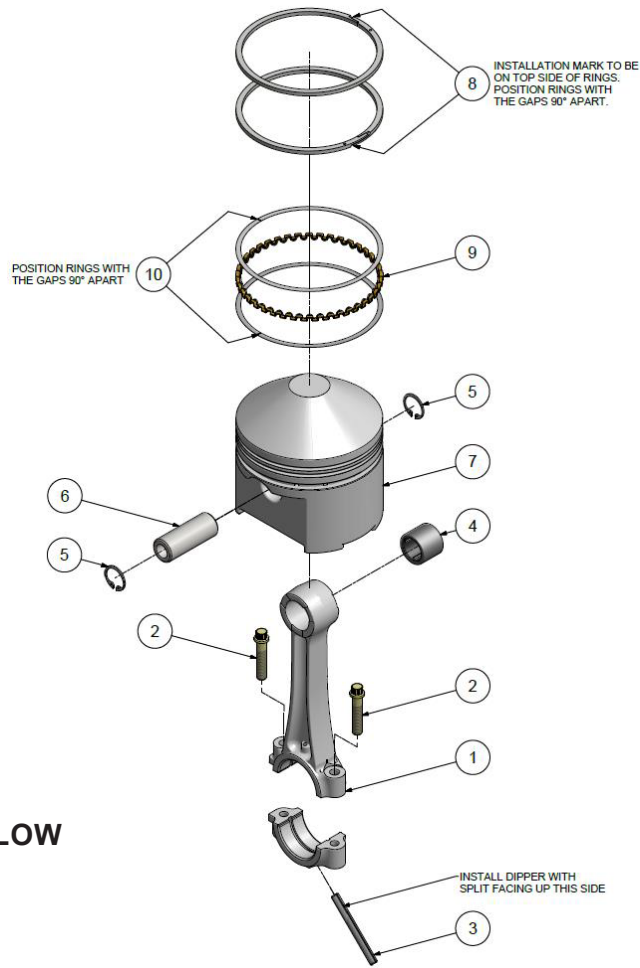
ITEM	PART	DESCRIPTION	QTY	STELLAR P/N
1.1	P12414B	CRANKSHAFT		7428
1.2	P12413A*	MAIN BEARING, CONE & ROLLER	1	-
2	RE208	KEY	1	6079
3	OSN36A	OIL SEAL	1	7430
4	NR367B	FLYWHEEL	1	D0827
5	655EE160	SCREW (TORQUE @ 600 IN-LBS)	1	-
6	M2955	NUT	1	-
*NOT SOLD SEPARATELY - SEE REPAIR PARTS LIST				
REPAIR PARTS LIST				
1.2	Z8981	MAIN BEARING	1	7429

Centrifugal Unloader Group



ITEM	PART	DESCRIPTION	QTY	STELLAR P/N
1	SE583B	SPINDLE,GOVERNOR	1	6096
2	SE582B	WEIGHT,GOVERNOR	2	6097
3	SE592A	PIN, GOVERNOR WEIGHT	2	6098
4	95B4Z	WASHER-LOCK	1	-
5	M2345	SCREW (TORQUE @ 470 IN-LBS)	1	-
6	M912A	SPACER,CENTRIFUGAL UNLOADER	1	7413
7	SE590	SPRING,GOVERNOR	1	7414
8	SE587	SLEEVE, SPRING	1	7415
9	SE1489	GASKET,GOVERNOR COVER	1	6097
10	RE10100A	GOVERNOR HOUSING COVER	1	124239
11	Z4593	BREATHER	1	7417
12	M3473	SCREW	6	7418
13	Z12414A	RELEASE VALVE KIT	1	C0896
14	M3658	SERIAL NUMBER PLATE	1	-
REPAIR PARTS LIST				
—	Z10887	COMPRESSOR GASKET SET (EXCLUDES VALVE GASKETS)	1	124238

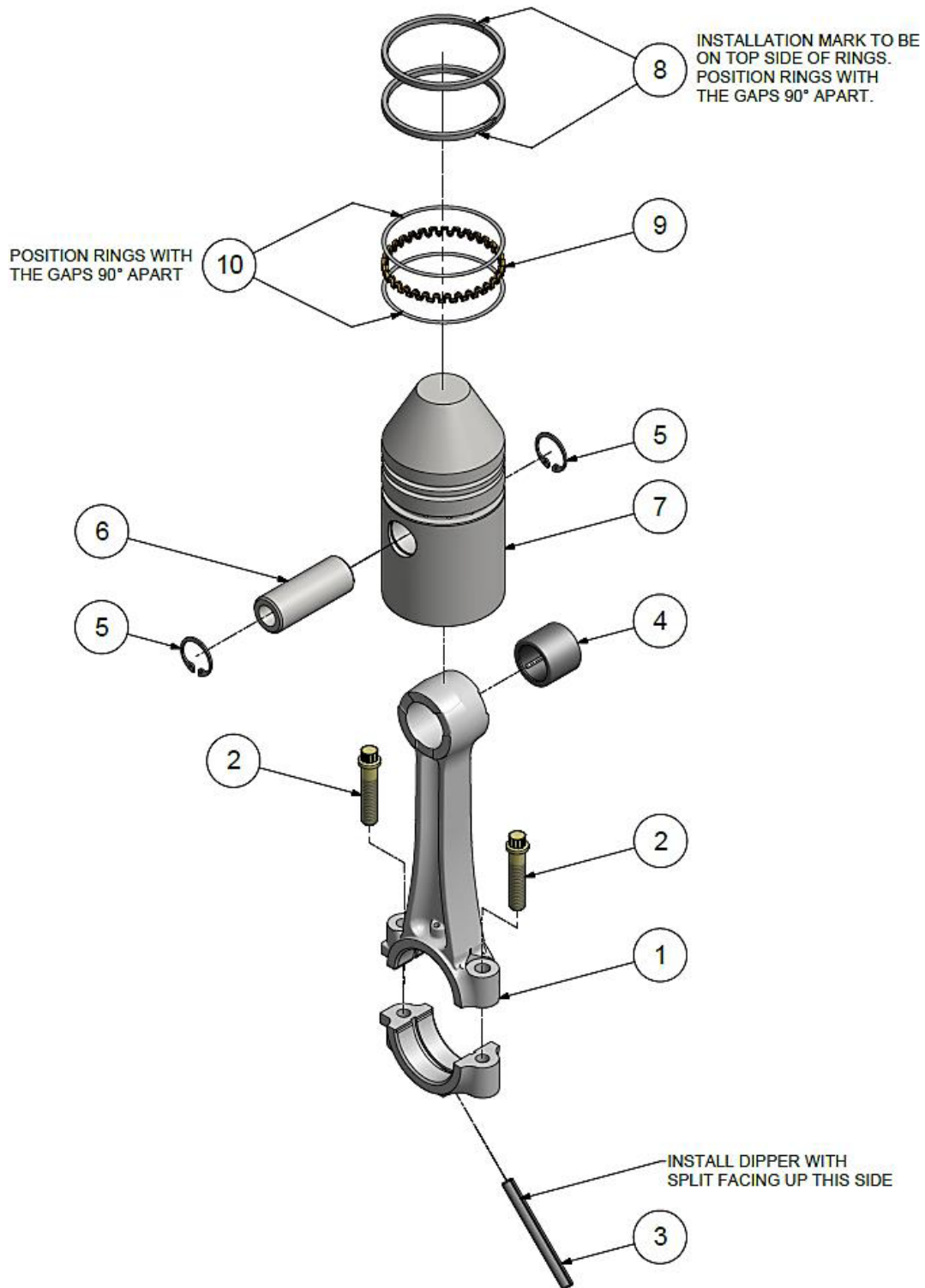
Piston/Rod Group – Low Pressure



NOTE:
PISTON / ROD GROUP - LOW
PRESSURE - QTY 2 PER
COMPRESSOR.

PISTON / ROD GROUP - LOW PRESSURE				
ITEM	PART	DESCRIPTION	QTY	STELLAR P/N
1	M1584*	CONNECTING ROD	1	—
2	M1583	SCREW (TORQUE @ 230 IN-LBS)	2	7433
3	R1024	OIL DIPPER	1	7432
4	R1037	BEARING,WRIST PIN	1	7434
5	R10102	RING,RETAINING	2	7438
6	R1021	PIN,PISTON	1	7437
7	R154	PISTON	1	—
8	P02788A*	RING,PISTON	2	—
9	RE1410D1*	RING,EXPANDER	1	—
10	RE1410D2*	RING,RAIL	2	—
*NOT SOLD SEPARATELY - SEE REPAIR PARTS LIST				
REPAIR PARTS LIST				
1-4	Z752	CONNECTING ROD ASSEMBLY KIT		7431
5-7	ZR154	PISTON KIT, LOW PRESSURE WITH PIN		7435
8-10	Z798	RING SET, LOW PRESSURE		—
5-10	Z9101	PISTON & RING KIT, LOW PRESSURE		—
—	Z9085	COMPLETE RING SET, HIGH & LOW PRESSURE X 2		124284

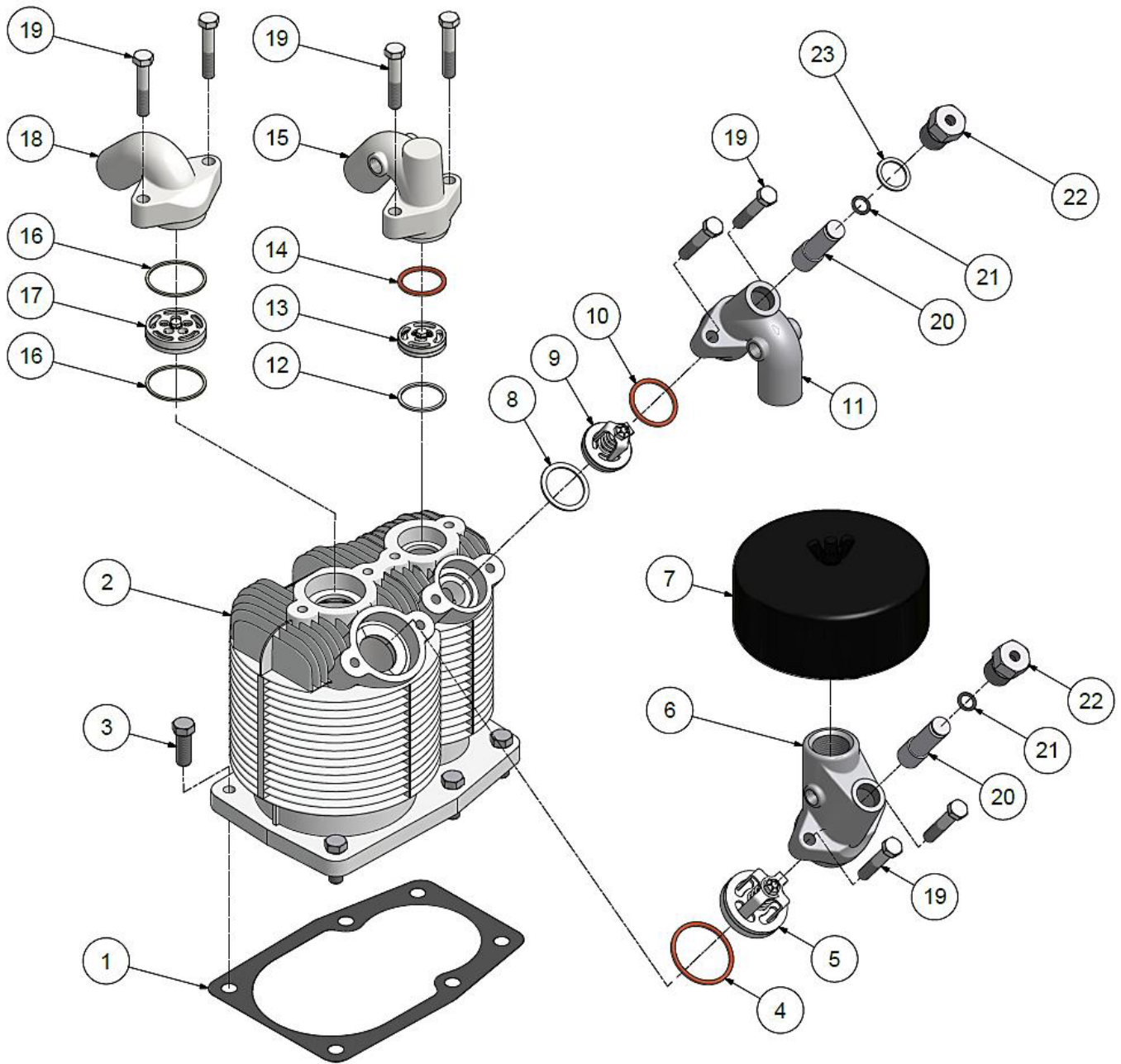
Piston/Rod Group – High Pressure



Piston/Rod Group – High Pressure Parts List

ITEM	PART	DESCRIPTION	QTY	STELLAR P/N
1	M1584*	CONNECTING ROD	1	–
2	M1583	SCREW (TORQUE @ 230 IN-LBS)	2	7433
3	R1024	OIL DIPPER	1	7432
4	R1037	BEARING,WRIST PIN	1	7434
5	R10102	RING,RETAINING	2	7438
6	R1021	PIN,PISTON	1	7437
7	P02709C	PISTON	1	–
8	P02785A*	RING,PISTON	2	–
9	RE3610D1*	RING,EXPANDER	1	–
10	RE3610D2*	RING,RAIL	2	–
*NOT SOLD SEPARATELY - SEE REPAIR PARTS LIST				
REPAIR PARTS LIST				
1-4	Z752	CONNECTING ROD ASSEMBLY KIT	1	7431
5-7	ZP2709C	PISTON KIT, HIGH PRESSURE WITH PIN	1	–
8-10	Z797	RING SET, HIGH PRESSURE	1	–
5-10	Z9100	PISTON & RING KIT, HIGH PRESSURE	1	–
—	Z9085	COMPLETE RING SET, HIGH & LOW PRESSURE X 2	1	124284

Cylinder Group – with Head Unloaders



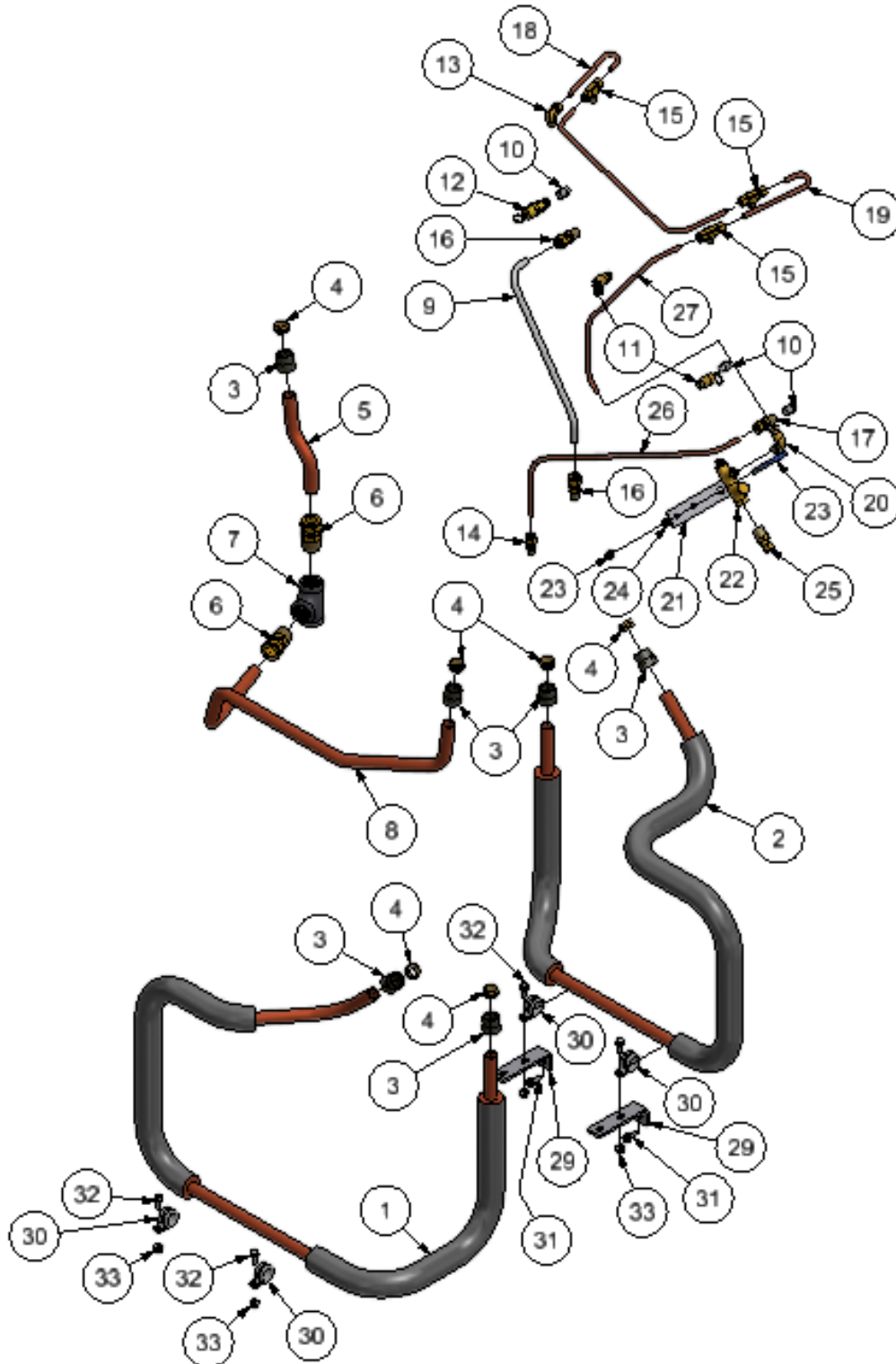
Cylinder Group – with Head Unloaders Parts List

CYLINDER GROUP - HEAD UNLOADERS				
ITEM	PART	DESCRIPTION	QTY	STELLAR P/N
1	NR29A	GASKET,CYLINDER FLANGE	1	6078
2	P12237D	CYLINDER	1	–
3	M2345	SCREW (TORQUE @ 400 IN-LBS)	6	6074
4	CQP14832A	GASKET,VALVE,LP,COPPER	1	124285
5	Z4877A	VALVE,LP,INTAKE,UNLOADER	1	7471
6	P09670C	MANIFOLD,LP INTAKE	1	7468
7	P04999A	FILTER SILENCER	1	6073
8	P09171A	GASKET,VALVE,HP,ALUMINUM	1	124286
9	Z11936	VALVE,HP,INTAKE,UNLOADER	1	7472
10	CQP14870A	GASKET,VALVE,HP,COPPER	1	124287
11	P12304B	MANIFOLD,HP INTAKE,HU	1	–
12	P04137A	GASKET,VALVE,HP,ALUMINUM	1	124288
13	Z115A	VALVE,HP,EXHAUST	1	C0894
14	CQP14869A	GASKET,VALVE,HP,COPPER	1	124289
15	P12303B	MANIFOLD,HP EXHAUST	1	–
16	P04135A	GASKET,VALVE,LP,ALUMINUM	2	124296
17	Z813A	VALVE,LP,EXHAUST,SUB-ASSY	1	C0891
18	RE102E	MANIFOLD,EXHAUST LP	1	7466
19	655ED080	SCREW (TORQUE @ 200 IN-LBS)	8	–
20	P09923A	UNLOADER PISTON	2	7482
21	P02547A	O-RING	2	7483
22	P02306B	VALVE,CYLINDER,FOR HU	2	7481
23	P00746A	GASKET	1	7493

***NOT SOLD SEPARATELY - SEE REPAIR PARTS LIST**

REPAIR PARTS LIST				
4,5,8,9, 10,12,13, 14,16,17	Z6796	COMPLETE VALVE SET, WITH GASKET SET	1	124291
4,8,10,12 14,16	Z5158	COMPLETE VALVE GASKET SET	1	4588
—	Z10887	COMPRESSOR GASKET SET (EXCLUDES VALVE GASKETS)	1	–
—	Z9145	KIT, HEAD UNLOADER CONVERSION (INCLUDES MANIFOLDS, UNLOADER VALVES ASSEMBLIES, PILOT VALVE, FITTINGS AND TUBING)	1	–

Tubing and Control Group – with Head Unloaders



Tubing and Control Group – with Head Unloaders

TUBING AND CONTROL GROUP - HEAD UNLOADERS				
ITEM	PART	DESCRIPTION	QTY	STELLAR P/N
1	313CAP272	INTERCOOLER,RIGHT,R30, STELLAR	1	104198
2	314CAP272	INTERCOOLER,LEFT,R30, STELLAR	1	104199
3	SE541	NUT	6	C0900
4	SE542	COMPRESSION FERRULE	6	C1147
5	301CAP857	TUBE	1	116645
6	M2867	TUBE FITTING	2	5593
7	M480	TEE	1	7479
8	300CAP857	TUBE, DISCHARGE	1	116644
9	UB375B	BREATHER TUBE	1	–
10	64AA5	PLUG	3	–
11	M3685	PRESSURE RELIEF VALVE	2	C1182
12	P12039A	SAFETY VALVE	1	124292
13	M2868	TUBE FITTING	1	7497
14	M2863	TUBE FITTING	1	7473
15	M2879	TUBE FITTING	3	7498
16	M2864	TUBE FITTING	2	7476
17	M2862	TUBE FITTING	1	–
18	302CAP294	TUBE, LEFT MANIFOLD	1	–
19	303CAP294	TUBE,RIGHT MANIFOLD	1	–
20	86A40	ELBOW	1	–
21	P09866A	PILOT VALVE BRACKET	1	–
22	P09865A	UNLOADER VALVE PILOT	1	–
23	M1893	U-BOLT	1	–
24	M919A	LOCK WASHER	2	–
25	M2884	TUBE FITTING	1	–
26	309CAP294	TUBE, RELEASE VALVE, R30, STELLAR	1	124293
27	310CAP294	TUBE, ACTUATING, R30, STELLAR	1	–
28	311CAP294	TUBE, INTERMEDIATE, R30, STELLAR	1	–
2	301CAP017	BRACKET, INTERCOOLER, R30 STELLAR	2	–
30	VP1180597	CLAMP	4	–
31	M1998	SCREW	2	–
32	75LM54	SCREW	4	–
33	50AW3	NUT	4	–



Subject to Change without Notification.
© 2024 Stellar Industries