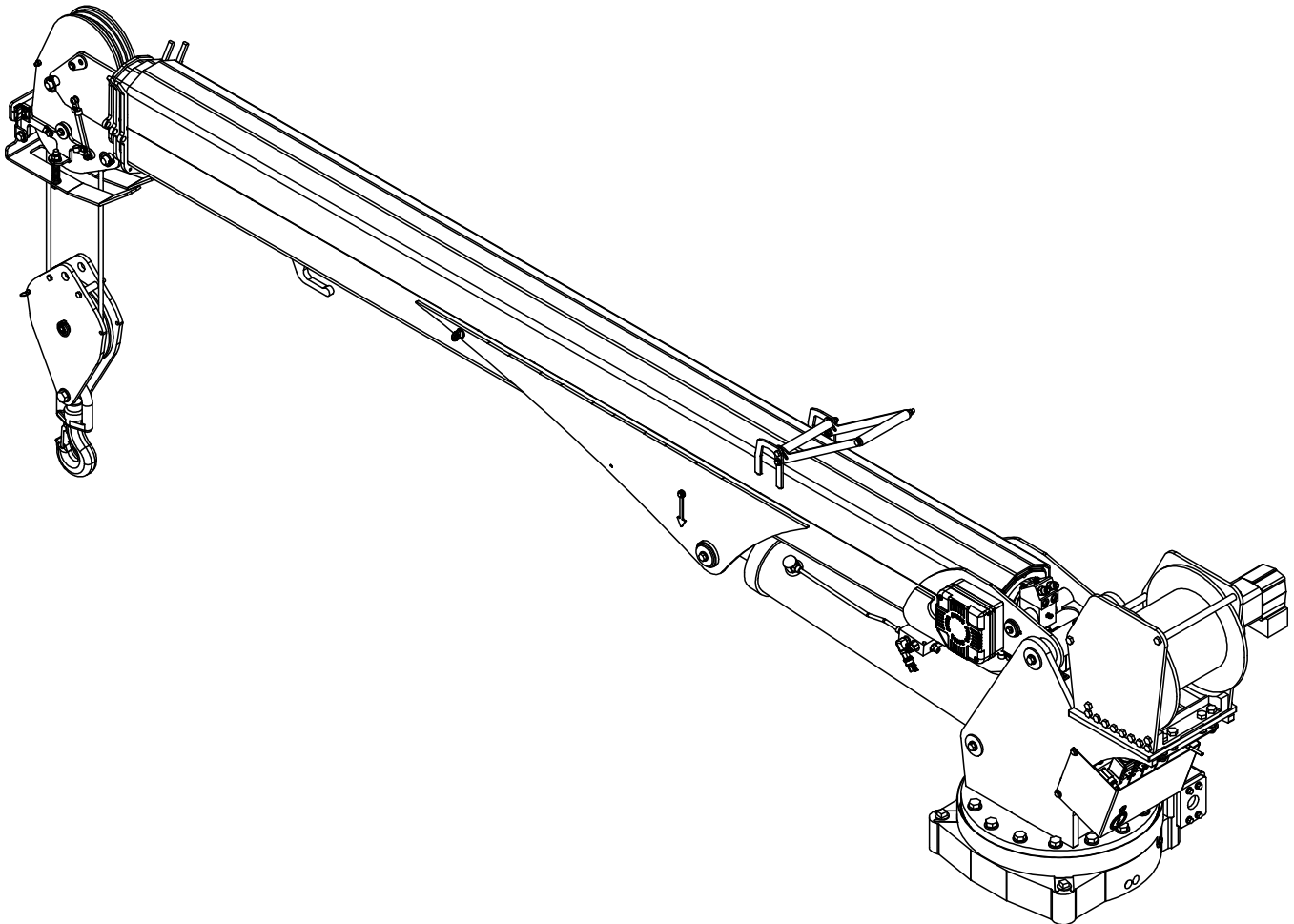




Model 14530 HSS Telescopic Crane Owner's Manual

Installation • Assembly Drawings • Parts



Notice: A copy of this manual must remain with the equipment at all times.
For a printable download copy, please visit: www.stellarindustries.com

Stellar Industries, Inc.

190 State Street

PO Box 169

Garner, IA 50438

800-321-3741

Fax: 641-923-2811

www.stellarindustries.com

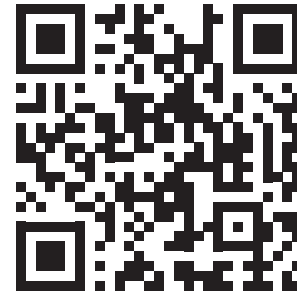
Subject to Change without Notification.
© 2025 Stellar Industries, Inc.

Rev 1.5
PN 127354

P65 Warning / Serial Tag Location / Cold Weather

WARNING

Operating, maintaining, and servicing a Stellar product may expose you to chemicals including, but not limited to, engine exhaust, carbon monoxide, phthalates, and lead. These chemicals are known to the State of California to cause cancer and birth defects (or other reproductive harm). To keep your exposure to a minimum, be sure to avoid breathing exhaust and service your Stellar product in a well-ventilated area while wearing gloves or washing your hands frequently. For more information, go to www.P65Warnings.ca.gov/passenger-vehicle.



www.p65warnings.ca.gov

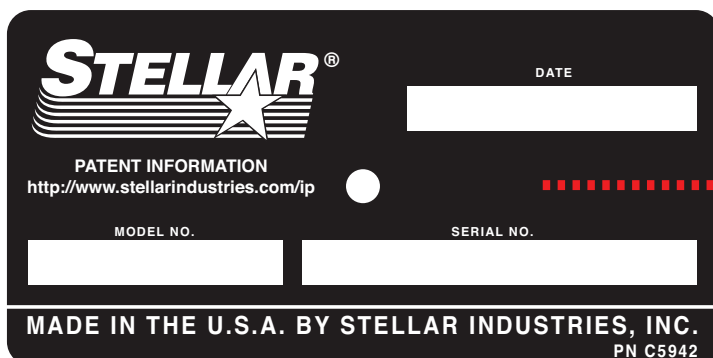
NOTICE

Cold Weather Performance

Although clear data on cold weather performance from every steel manufacturer is not available for all types and thicknesses of steel, Stellar Industries is confident that the weldments on our products will operate to 100% of their intended purpose to temperatures down to -40° F / C.

It is recommended if Stellar manufactured equipment needs to be used in temperatures below -40° F / C, the operator should pull the unit into a climate-controlled area and allow the weldments to warm up to and then maintain a temperature above this level.

Serial Tag Location



STELLAR[®]

PATENT INFORMATION
<http://www.stellarindustries.com/ip>

DATE

MODEL NO. SERIAL NO.

MADE IN THE U.S.A. BY STELLAR INDUSTRIES, INC.
PN C5942

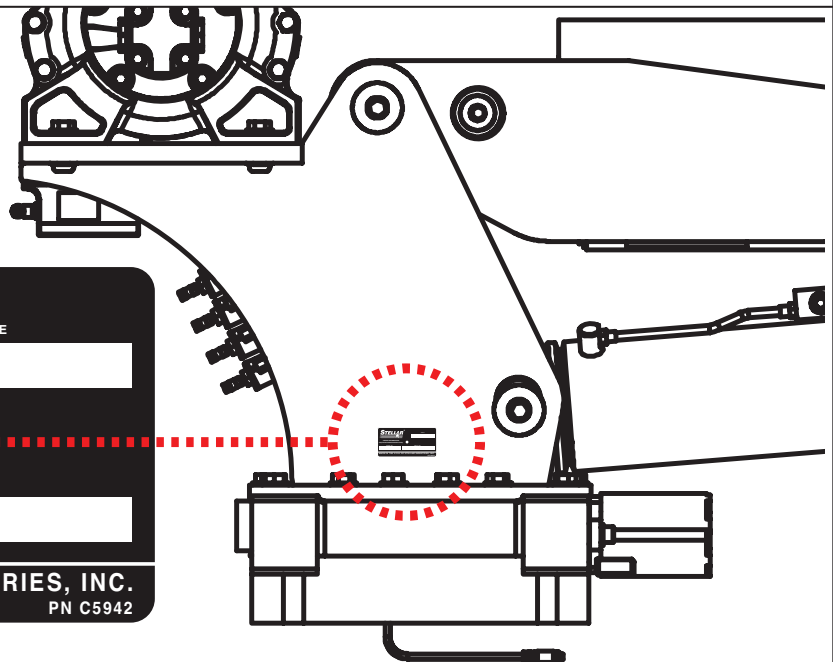


Table of Contents

| | |
|---|-----------|
| Introduction | iv |
| Chapter 1 - Specifications | 1 |
| Model 14530 Specifications | 2 |
| Capacity Chart - Decal PN 132722 | 3 |
| Dimensional Drawing 1 | 4 |
| Dimensional Drawing 2 | 5 |
| Chapter 2 - Installation | 7 |
| General Installation | 8 |
| Installer Notice | 8 |
| Torque Data Chart | 9 |
| Installation Overview | 10 |
| Installation Overview | 11 |
| Control Kit - PN 118530 | 12 |
| Control Kit - PN 118530 Parts List | 13 |
| Electrical Circuit Grounding | 14 |
| Hydraulic Kit - PN 128246 | 16 |
| Hydraulic Kit - PN 128246 Parts List | 17 |
| Valve Bank - PN 57572 | 18 |
| Valve Bank - PN 57572 Parts List | 19 |
| Hydraulic Installation | 20 |
| Winch Case Drain Installation | 21 |
| Hydraulic System | 22 |
| Face Seal/O-Ring Size Chart | 23 |
| Fittings | 24 |
| Flat Face O-Ring Seal - FFORX | 24 |
| SAE 37° JIC | 24 |
| Fittings - Continued | 25 |
| O-Ring Boss | 25 |
| Face Seal Female Swivel Fittings | 25 |
| Stability Procedure | 26 |
| Crane Load Level Indicator | 27 |
| Decal Kit - PN 128242 | 28 |
| Chapter 3 - Assembly Drawings | 29 |
| Base Assembly - PN 26205 | 30 |
| Base Assembly - PN 26205 Parts List | 31 |
| Gear Bearing - PN 25140 | 32 |
| Gear Bearing - PN 25140 | 33 |
| Mast Assembly - PN 128043 | 34 |
| Mast Assembly - PN 128043 Parts List | 35 |
| Main Boom Assembly - PN 127066 | 36 |
| Main Boom Assembly - PN 127066 Parts List | 37 |
| Extension Boom Assembly - PN 127211 | 38 |
| Extension Boom Assembly - PN 127211 Parts List | 39 |
| Extension Boom Assembly - PN 127211 Parts List Cont. | 40 |
| Main Cylinder Assembly - PN 127218 | 42 |
| Main Cylinder Assembly - PN 127218 Parts List | 43 |
| Extension Cylinder Assembly - PN 128041 | 44 |
| Extension Cylinder Assembly - PN 128041 Parts List | 45 |
| Cable & Hook Assembly - PN 56274 | 46 |
| Cable & Hook Assembly - PN 56274 Parts List | 47 |
| Wireless Remote Replacement Parts | 48 |
| Wireless Remote Replacement Parts List | 49 |

Introduction

A copy of this manual is provided with every crane and can be found in the hard plastic manual case that is installed on the chassis. A copy of this manual shall remain with the crane at all times.

Throughout the manual, three signal words will be used to bring attention to important items:

NOTICE

A NOTICE signal word indicates a practice not related to physical injury.

WARNING

A WARNING signal word indicates a hazardous situation which, if not avoided, could result in death or serious injury.

DANGER

A DANGER signal word indicates a hazardous situation which, if not avoided, will result in death or serious injury.

Information contained within this manual does not cover operation, maintenance, or troubleshooting. Please refer to the General Light Duty Crane Manual for details on these items.

This manual is not binding. Stellar Industries, Inc. reserves the right to change, at any time, any or all of the items, components, and parts deemed necessary for product improvement or commercial/production purposes. This right is kept with no requirement or obligation for immediate mandatory updating of this manual.

If more information is required or technical assistance is needed, or if you feel that any part of this manual is unclear or incorrect, please contact the Stellar Customer Service Department by phone at 800-321-3741 or email at service@stellarindustries.com.

**For Technical Questions, Information, Parts, or Warranty, Call Toll-Free at
800-321-3741**

Hours: Monday - Friday, 8:00 a.m. - 5:00 p.m. CST

Or email at the following addresses:

Technical Questions, and Information

service@stellarindustries.com

Order Parts

parts@stellarindustries.com

Warranty Information

warranty@stellarindustries.com

Chapter 1 - Specifications

Chapter Contents

| | |
|--|---|
| Model 14530 Specifications | 2 |
| Capacity Chart - Decal PN 132722 | 3 |
| Dimensional Drawing 1 | 4 |
| Dimensional Drawing 2 | 5 |

Model 14530 Specifications

| SPECIFICATIONS | |
|----------------------------|--|
| CRANE RATING* | 92,000 FT-LBS (12.72TM) |
| STANDARD BOOM LENGTH | 13' 3" (4.03 M) FROM CL OF CRANE |
| BOOM EXTENSION: | 1ST STAGE: HYDRAULIC 100" (254 CM) |
| | 2ND STAGE: HYDRAULIC 100" (254 CM) |
| MAXIMUM HORIZONTAL REACH: | 29' 11" (9.12 M) FROM CL OF CRANE |
| MAXIMUM VERTICAL LIFT | 31' 11" (9.73 M) FROM CRANE BASE |
| STOWED HEIGHT (CRANE ONLY) | 42.4" (108 CM) |
| REQUIRED MOUNTING SPACE | 25" x 22" (63.5 CM x 55.9 CM) |
| APPROXIMATE CRANE WEIGHT | 2,850 LBS (1,293 KG) |
| CONTROLS | RADIO CONTROL STANDARD FOR ALL FUNCTIONS. |
| WIRE ROPE | 1/2" (1.27 CM 6X25 IWRC-DGXIP X 120' (36.58 M) |
| BOOM ELEVATION | -10° TO +80° |
| WINCH SPECIFICATIONS | |
| LINE PULL SPEED: | 60 FT / MIN (18.29 M / MIN) |
| MAX. SINGLE PART LINE: | 7,000 LBS (3,175 KG) |
| MAX. DOUBLE PART LINE | 14,000 LBS (6,350 KG) |
| ROTATION (WORM GEAR): | 400° POWER |
| LIFTING CAPACITY** | 14,000 LBS @ 6'7" (6,350 KG @ 2.00 M) |
| | 3,145 LBS @ 29'3" (1,427 KG @ 8.92 M) |
| POWER SUPPLY | PTO & PUMP: 12 GPM @ 3,000 PSI (45.4 LPM @ 207 BAR) |

NOTES:

SPECIFICATIONS*CRANE RATING IN BOOST MODE. NORMAL CRANE RATING IS 78,000 FT-LB (10.78 TM).

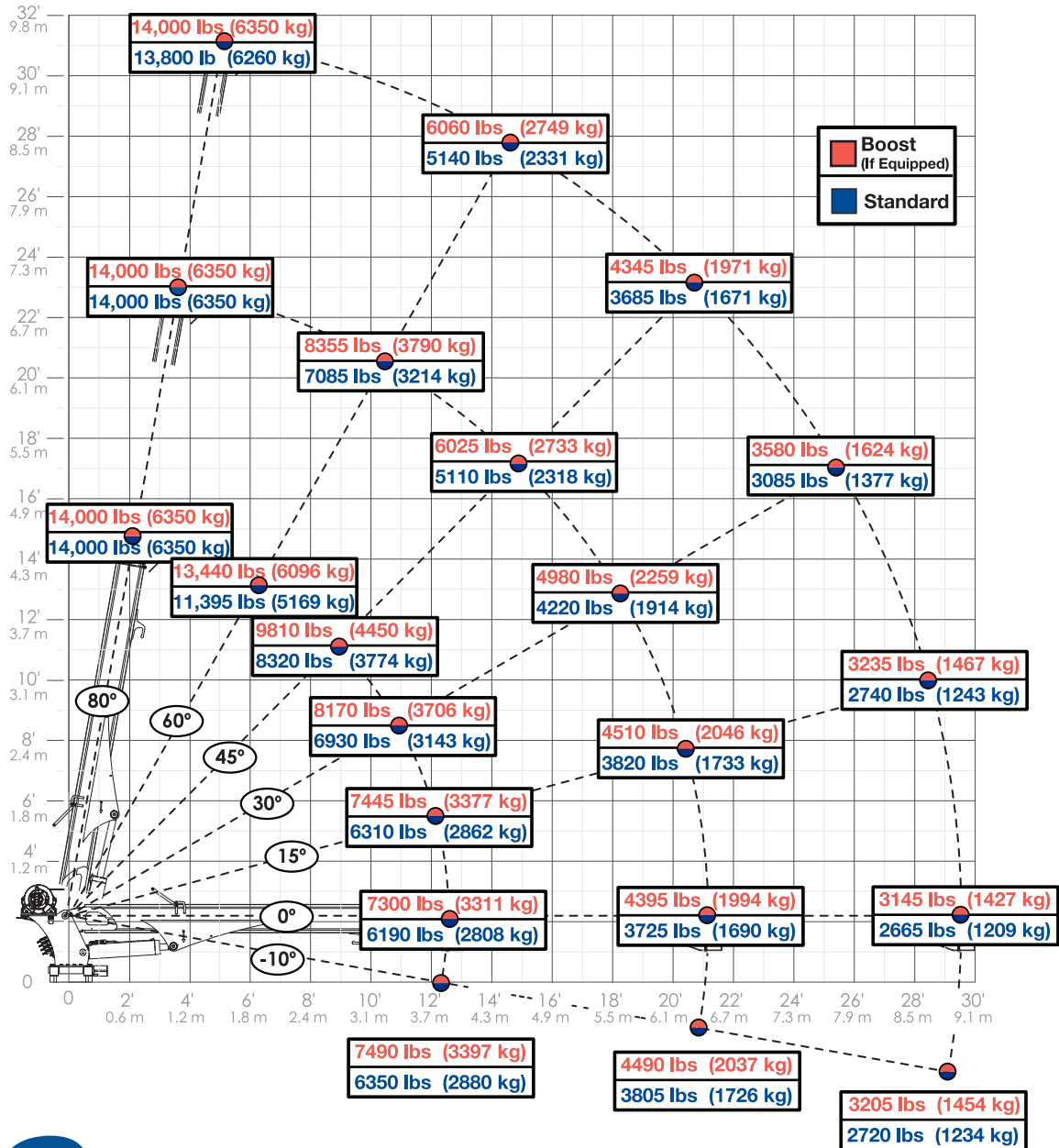
****MAXIMUM CAPACITIES IN BOOST MODE.**

Capacity Chart - Decal PN 132722

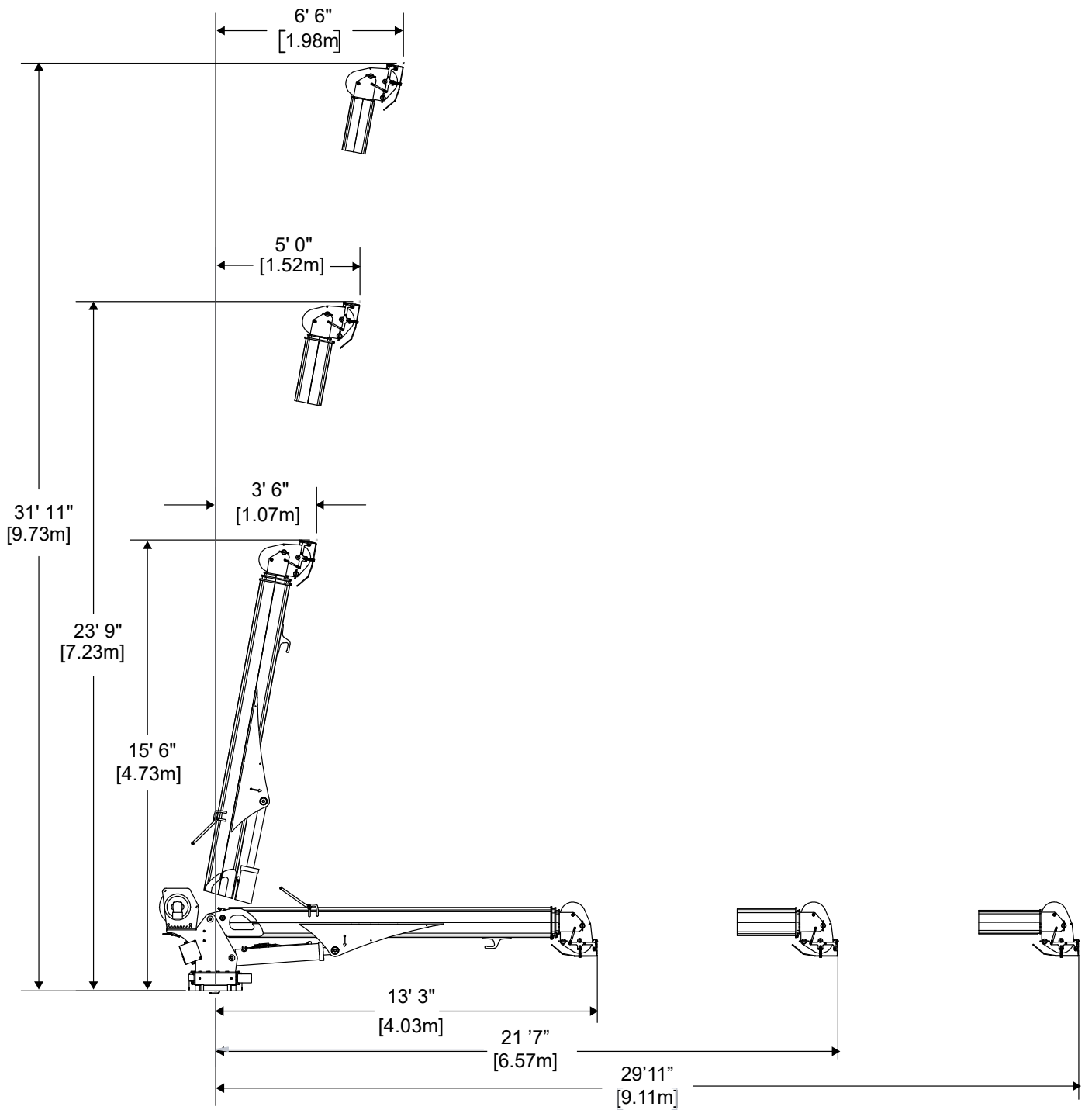
IMPORTANT

Weight of load handling devices are part of the load lifted and must be deducted from the capacity.

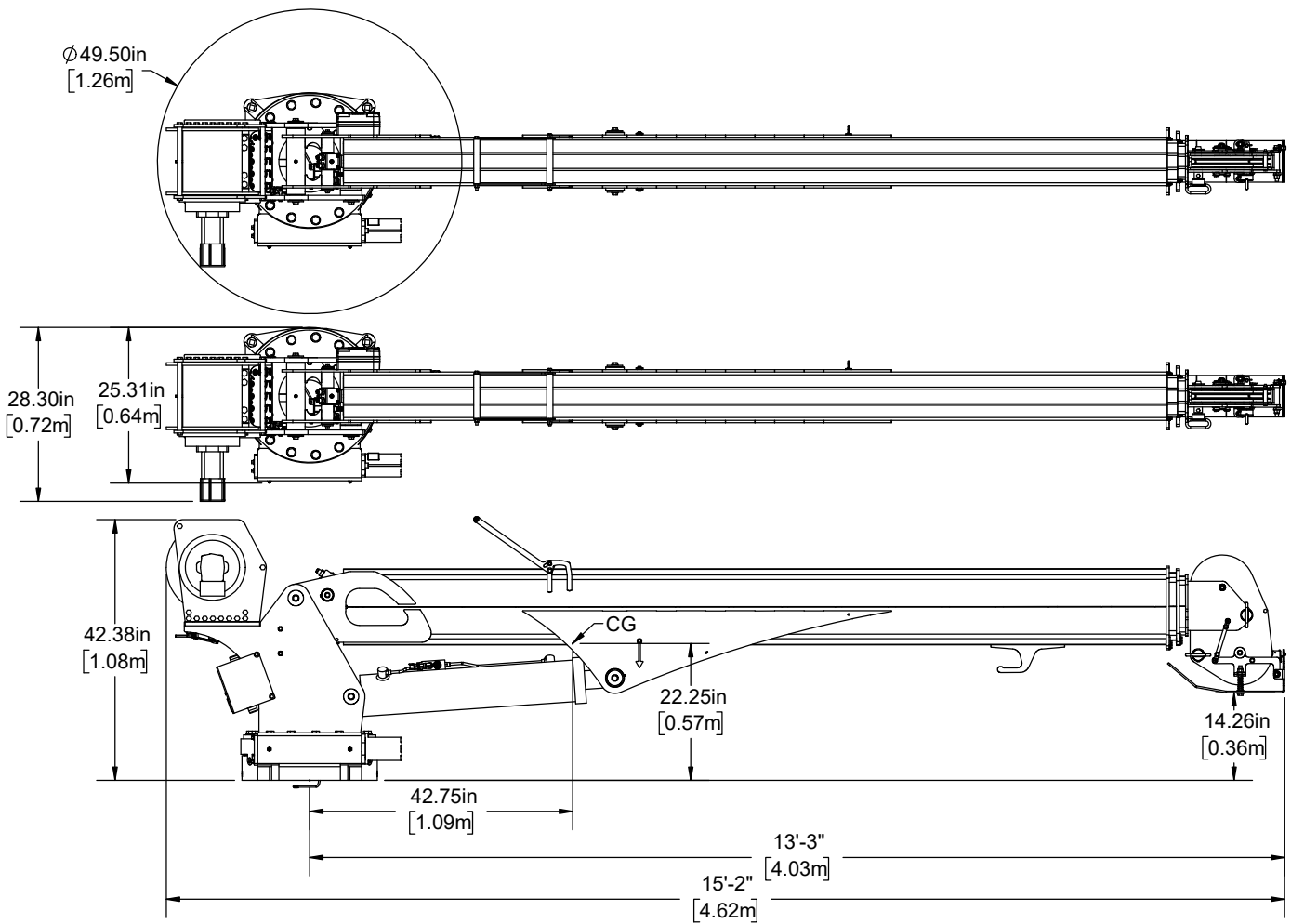
Maximum single-part line capacity is 7000 lbs (3175 kg). For greater loads, use two-part line.



Dimensional Drawing 1



Dimensional Drawing 2



This page left intentionally blank.

Chapter 2 - Installation

Chapter Contents

| | |
|---|----|
| General Installation | 8 |
| Installer Notice..... | 8 |
| Torque Data Chart..... | 9 |
| Installation Overview | 10 |
| Installation Overview | 11 |
| Control Kit - PN 118530 | 12 |
| Control Kit - PN 118530 Parts List | 13 |
| Electrical Circuit Grounding..... | 14 |
| Hydraulic Kit - PN 128246..... | 16 |
| Hydraulic Kit - PN 128246 Parts List..... | 17 |
| Valve Bank - PN 57572 | 18 |
| Valve Bank - PN 57572 Parts List | 19 |
| Hydraulic Installation..... | 20 |
| Winch Case Drain Installation | 21 |
| Hydraulic System | 22 |
| Face Seal/O-Ring Size Chart..... | 23 |
| Fittings | 24 |
| Flat Face O-Ring Seal - FFORX | 24 |
| SAE 37° JIC | 24 |
| Fittings - Continued..... | 25 |
| O-Ring Boss..... | 25 |
| Face Seal Female Swivel Fittings | 25 |
| Stability Procedure..... | 26 |
| Crane Load Level Indicator | 27 |
| Decal Kit - PN 128242..... | 28 |

General Installation

This chapter is designed to serve as a general guide for the installation of a Stellar 14530 Crane on a Stellar Service Body. Each installation is considered unique so certain portions of this chapter may or may not apply to your direct application. If a question should arise during the installation process, please contact Stellar Customer Service at (800) 321 3741.

This crane is designed for use with a Stellar Service Body installed on a vehicle that meets the minimum chassis requirements of the crane. It is the installer's responsibility to assure that the crane is mounted on a platform that will support the maximum crane rating of this crane.

⚠ WARNING Do not install this crane on a body not capable of handling the loads imposed on it. Failure to do so may result in serious injury or death.

NOTICE When installing welder units to the service bodies, it is highly recommended that a surge protector is installed on the chassis batteries to protect the crane radio receiver, wiring and other electronic devices from an unexpected electrical spike or surge. Failure to do so could result in extensive damage to the service body and crane electrical circuit.

Installer Notice

According to Federal Law (49 cfr part 571), each final-stage manufacturer shall complete the vehicle in such a manner that it conforms to the standards in effect on the date of manufacture of the incomplete vehicle, the date of final completion, or a date between those two dates. This requirement shall, however, be superseded by any conflicting provisions of a standard that applies by its terms to vehicles manufactured in two or more stages.

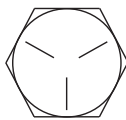
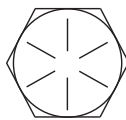
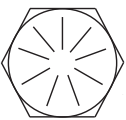
Therefore, the installer of Stellar® Cranes and Bodies is considered one of the manufacturers of the vehicle. As such a manufacturer, the installer is responsible for compliance with all applicable federal and state regulations. They are required to certify that the vehicle is in compliance with the Federal Motor Vehicle Safety Standards and other regulations issued under the National Traffic and Motor Vehicle Safety Act.

Please reference the Code of Federal Regulations, title 49 - Transportation, Volume 5 (400-999), for further information, or visit <http://www.gpoaccess.gov/nara/index.html> for the full text of Code of Federal Regulations.

Torque Data Chart

When using the torque data in the chart, the following rules should be observed:

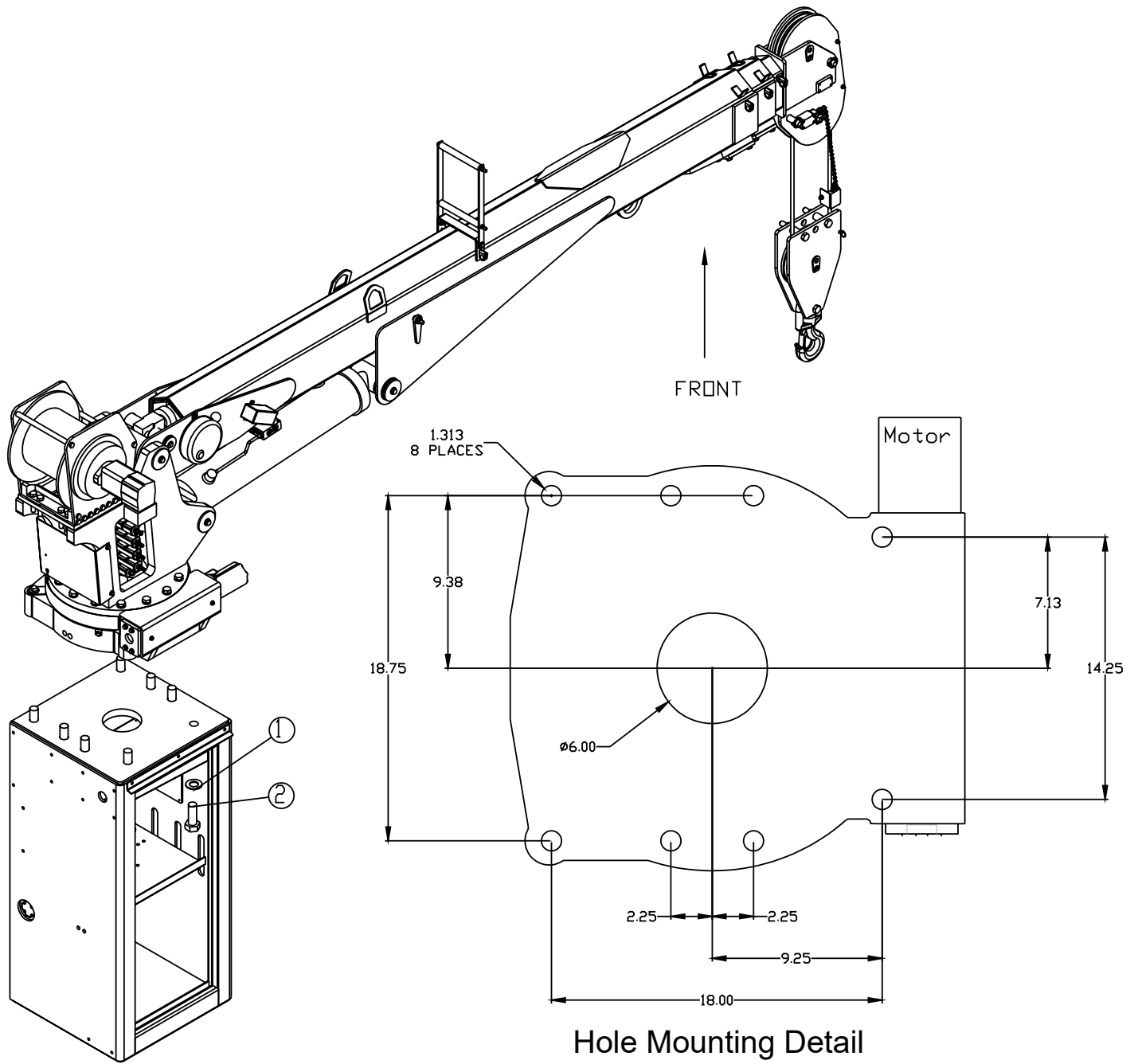
- Bolt manufacturer's particular specifications should be consulted when provided.
- Flat washers of equal strength must be used.
- All torque measurements are given in foot-pounds. To convert to inch-pounds, multiply by 12.
- Torque values specified are for bolts with residual oils or no special lubricants applied. If special lubricants of high stress ability, such as Never-Seez compound graphite and oil, molybdenum disulphite, colloidal copper or white lead are applied, multiply the torque values in the charts by the factor .90. The use of Loctite does not affect the torque values listed above.
- Torque values for socket-head capscrews are the same as for Grade 8 capscrews.
- Do not use these values if a different torque value or tightening procedure is given for a specific application. Torque values listed are for general use only. Check tightness of fasteners periodically.
- Shear bolts are designed to fail under predetermined loads. Always replace shear bolts with identical grade.
- Fasteners should be replaced with the same or higher grade. If higher grade fasteners are used, these should only be tightened to the strength of the original.
- Tighten plastic insert or crimped steel-type lock nuts to approximately 110 percent of the dry torque values shown in the chart below, applied to the nut, not to the bolt head. Tighten toothed or serrated-type lock nuts to the full torque value. *Note: "Lubricated" means coated with a lubricant such as engine oil, or fasteners with phosphate and oil coatings. "Dry" means plain or zinc plated without lubrication. Tighten lubricated bolts to approximately 80% of dry bolts.*

| | | GRADE 5 | | GRADE 8 | | GRADE 9 |
|----------------|-------------------|--|----------------|---|----------------|---|
| | |  | |  | |  |
| Size (DIA-TPI) | Bolt DIA (Inches) | Plain (Ft-Lb) | Plated (Ft-Lb) | Plain (Ft-Lb) | Plated (Ft-Lb) | Plated (Ft-Lb) |
| 5/16-18 | 0.3125 | 17 | 13 | 25 | 18 | 22 |
| 3/8-16 | 0.3750 | 31 | 23 | 44 | 33 | 39 |
| 7/16-14 | 0.4375 | 49 | 37 | 70 | 52 | 63 |
| 1/2-13 | 0.5000 | 75 | 57 | 105 | 80 | 96 |
| 9/16-12 | 0.5625 | 110 | 82 | 155 | 115 | 139 |
| 5/8-11 | 0.6250 | 150 | 115 | 220 | 160 | 192 |
| 3/4-10 | 0.7500 | 265 | 200 | 375 | 280 | 340 |
| 7/8-9 | 0.8750 | 395 | 295 | 605 | 455 | 549 |
| 1-8 | 1.000 | 590 | 445 | 910 | 680 | 823 |
| 1 1/8-7 | 1.1250 | 795 | 595 | 1290 | 965 | 1167 |
| 1 1/4-7 | 1.2500 | 1120 | 840 | 1815 | 1360 | 1646 |
| 1 3/8-6 | 1.3750 | 1470 | 1100 | 2380 | 1780 | 2158 |
| 1 1/2-6 | 1.500 | 1950 | 1460 | 3160 | 2370 | 2865 |

Installation Overview

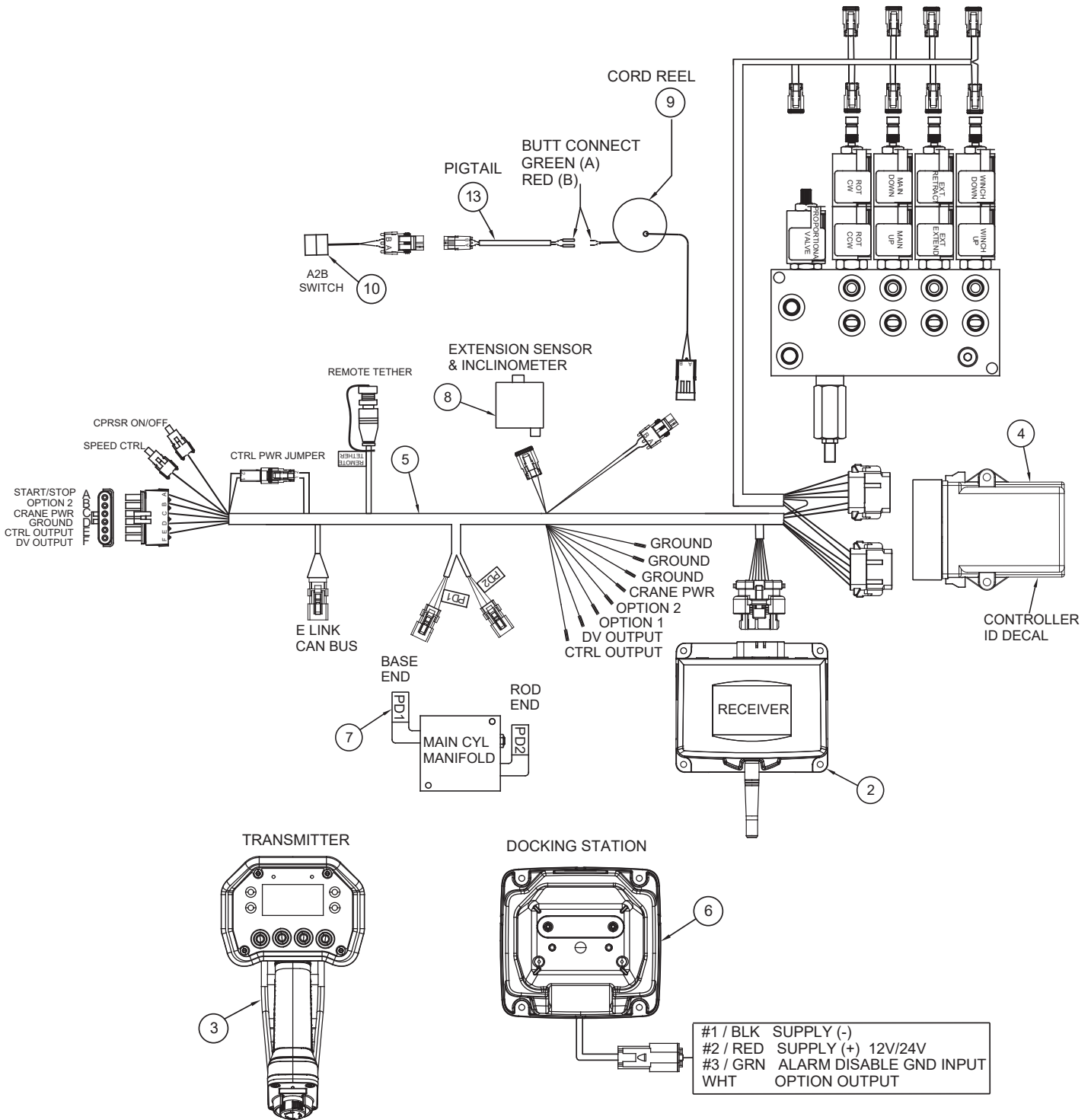
1. Determine that the mounting location for the 14530 crane is at least 25" x 22" (63.5 x 55.9 cm).
2. Use the detail below to drill 1.31" diameter holes into the mounting plate. Run tap on the threads of the base to be sure they are clean.
3. Use a crane or lifting device capable of lifting the weight of the Stellar® Crane. The Stellar 14530 weighs approximately 2850 lbs (1293 kg). **Note: cranes are shipped with rotation positioned at 200 degrees of 400 degree system.** This will allow for easy installation of the crane and permanent connection of all hydraulic and electrical components prior to repositioning into the crane saddle.
4. Connect straps or chain from the lifting device to the lifting rings on the 14530.
5. Use eight (8) 3.5" x 1.25" #8 bolts and eight (8) #8 flat washers.
6. Install a washer on each bolt.
7. Apply Loctite Thread locker #277 to the bolts.
8. Using the lifting device, lower the 14530 just above the crane compartment and start the bolts. Have someone assist in leveling the crane. **Note: the rotation motor should be to the door side of crane compartment and the boom should be extended back over the rear bumper.**
9. Secure the crane using the mounting hardware provided (see the detail below). **Note: longer or shorter cap screws may be required – recommended thread engagement into crane base is 1.75" – use grade 8, zinc plated cap screws only.**
10. Torque the cap screws to 950-1000 ft-lbs.
11. Remove supporting crane.
12. Hook-up hydraulics and electrical using the schematics provided in this chapter.

Installation Overview



| ITEM | PART | DESCRIPTION | QTY |
|------|-------|-----------------------------|-----|
| 1 | 9180 | WASHER 1.25 SAE FLAT YELLOW | 8 |
| 2 | 16654 | CAP SCR 1.25-7X3.50 GR8 | 8 |

Control Kit - PN 118530



NOTICE

Any modification to the crane control system (electrical and / or hydraulic) must be approved by Stellar.

Control Kit - PN 118530 Parts List

| PN 118530 | | | |
|-----------|--------|--|------|
| ITEM | PART | DESCRIPTION | QTY |
| 01 | 113550 | RADIO CTRL ASM 4 FCTN CDTPRO G6RC PG | 1 |
| 02 | 113569 | RECEIVER CDTPRO G6RC 2.4GHZ 14P | REF |
| 03 | 113568 | TRANSMITTER 4 FCTN MECH CDTPRO G6RC PG | REF |
| 04 | 113571 | CTRL MODULE MECH CRANE CDTPRO G6 | 1 |
| 05 | 113580 | WIRE HRNS MECH CRANE CDTPRO G6 451 | 1 |
| 06 | 113551 | DOCKING STATION RADIO TRANS CDTPRO | 1 |
| 07 | 108268 | TRANSDUCER PRESSURE 0-5000PSI #4 SAE DT | 2REF |
| 08 | 110460 | ENCODER BOOM VECTOR 6M CANOPEN | REF |
| 09 | 123760 | CORD REEL 29FT 4 WIRE SEALED | REF |
| 10 | 35105 | SWITCH LIMIT (NO) ROLLER LVR LT BRKT E1161 | REF |
| 11 | 89152 | TETHER CABLE 10M M-F M12 SCANRECO | 1 |
| 12 | 119851 | TAG QUICK START CDTPRO TX | 1 |
| 13 | 124587 | PIGTAIL ASM 14IN 2P WP SHRD | 1 |
| REV. A | | | |

Electrical Circuit Grounding

When installing the crane, always locate a good source for grounding the circuit. A majority of electrical failures are due to poor grounding. Poor grounding can cause intermittent operation of the equipment, electrical component failures and cause the equipment to not operate at all.

Chassis manufacturers usually will have a ground strap which ties into the truck frame from the battery, but it is always a good idea to check each individual model to verify where the ground is located. Never use the mechanic body as a ground source. Make sure the electrical grounds are routed to either the chassis frame rail or the chassis's main grounding source.

Stellar provides a stud (PN 40992) for grounding the crane to the chassis frame rail:



Inside Frame Rail



Outside Frame Rail

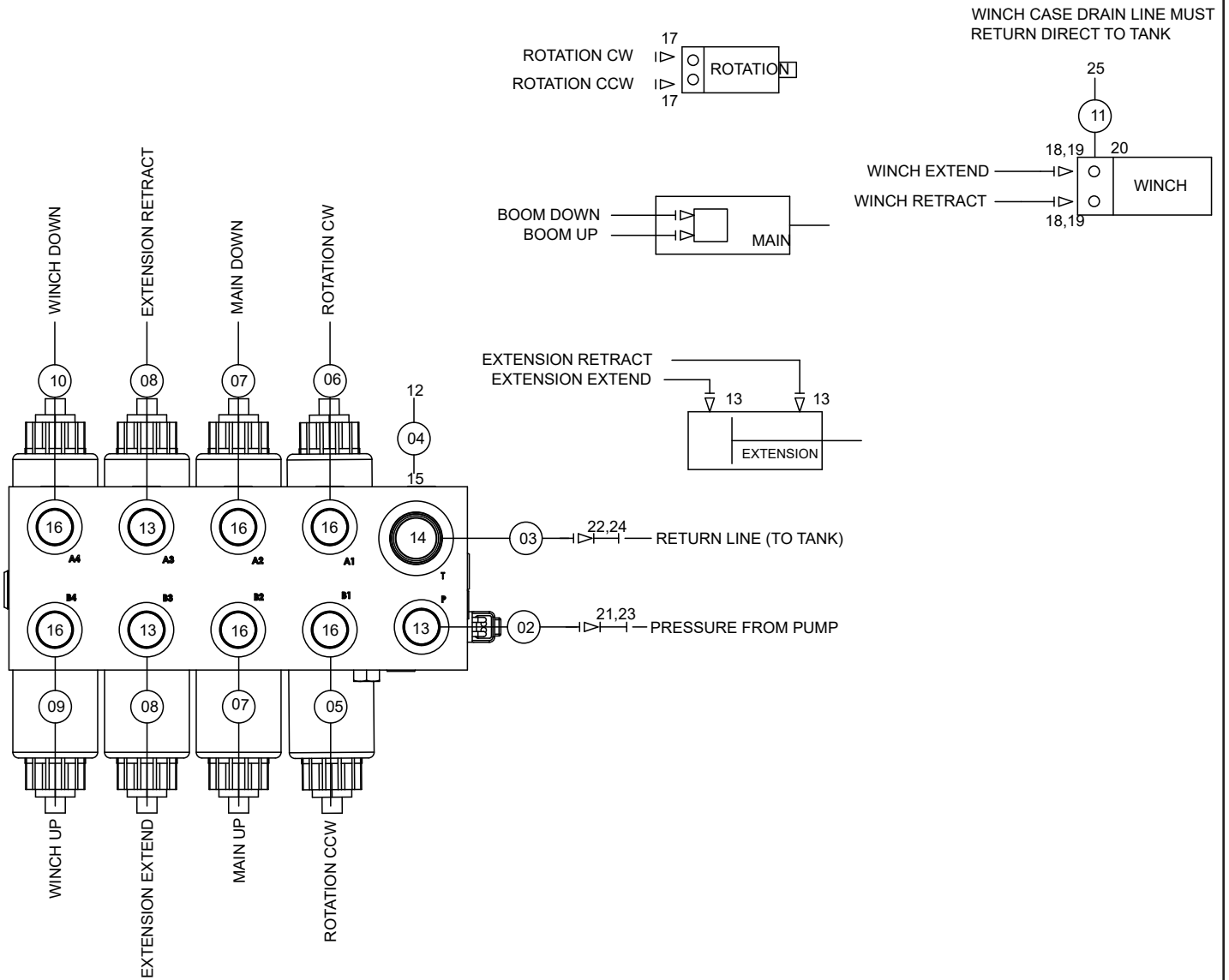
• Drill the hole to the frame rail in accordance with the chassis body builder's guide.

⚠ WARNING

- Hole size: 21/64"
- The hole location should allow for the shortest length of ground wire while keeping enough slack for flexibility.
- Be sure to grind the frame rail around the hole to ensure a proper ground connection.
- Frame rail thickness may require additional flat washers (as shown).
- Use an electrical coating on hardware to prevent corrosion.

This page left intentionally blank.

Hydraulic Kit - PN 128246

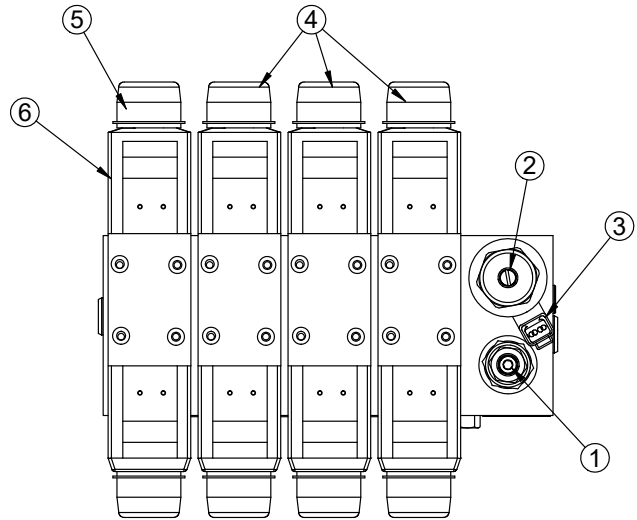
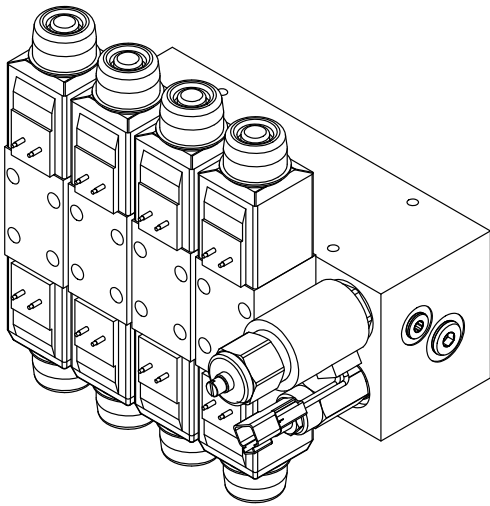


Hydraulic Kit - PN 128246 Parts List

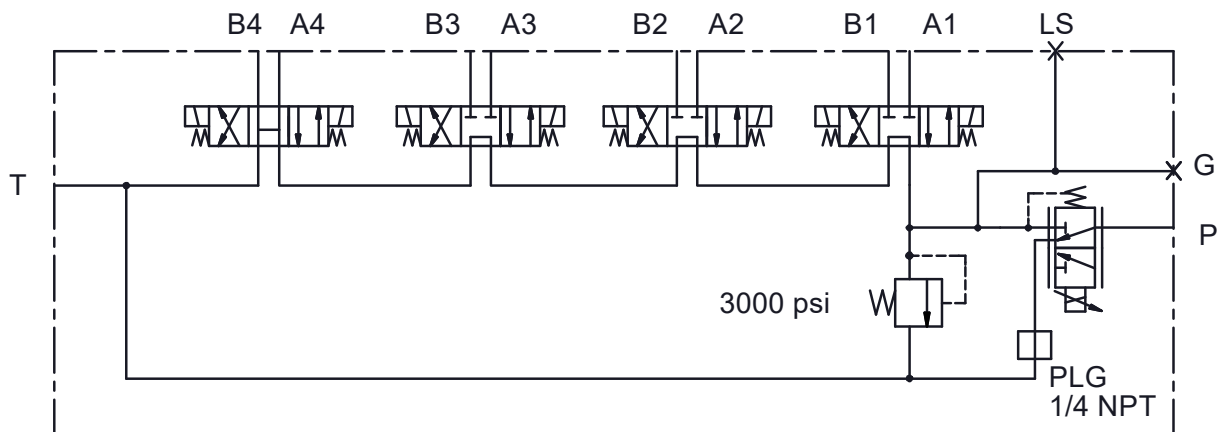
| PN 128246 | | | |
|-----------|--------|-----------------------------------|------|
| ITEM | PART | DESCRIPTION | QTY |
| 01 | 128247 | HOSE KIT 14530 HSS (INCL:2-11) | 1 |
| 02 | 59659 | HOSE-HYD .50 X 18 | 1REF |
| 03 | 59660 | HOSE-HYD .75 X 16 | 1REF |
| 04 | 26016 | HOSE-HYD .25 X 15 | 1REF |
| 05 | 59532 | HOSE-HYD .38 X 44 | 1REF |
| 06 | 59658 | HOSE-HYD .38 X 44 | 1REF |
| 07 | 55896 | HOSE-HYD .38 X 26 | 2REF |
| 08 | 128717 | HOSE-HYD .50 X 21 | 2REF |
| 09 | 59666 | HOSE-HYD .38 X 29 | 1REF |
| 10 | 59665 | HOSE-HYD .38 X 27 | 1REF |
| 11 | 59755 | HOSE-HYD .38 X 64 | 1REF |
| 12 | 25890 | GAUGE OIL 0-5000 1/4 NPT TOU | 1 |
| 13 | 1554 | FTG 8-8 MFS-MORB STRAIGHT | 5 |
| 14 | C2142 | FTG 12-12 MFS-MORB STRAIGHT | 1 |
| 15 | C1198 | FTG 4-4 MFS-MAORB 90 | 1 |
| 16 | C1854 | FTG 6-8 MFS-MORB STRAIGHT | 6 |
| 17 | D1302 | FTG 6-10 MFS-MAORB 90 | 2 |
| 18 | C1180 | FTG 8-12 MFS-MORB STRAIGHT | 2 |
| 19 | C2376 | FTG 8-8 MFS-FFSS 90 | 2 |
| 20 | C4929 | FTG 6-4 MFS-MORB STRAIGHT | 1 |
| 21 | 12172 | FTG 8-8 MFS-MFS SWIVEL STRAIGHT | 1 |
| 22 | 28383 | FTG 12-12 MFS-MFS SWIVEL STRAIGHT | 1 |
| 23 | 2772 | FTG 8 FFS CAP | 1 |
| 24 | C4934 | FTG 12 FFS CAP | 1 |
| 25 | 0882 | FTG 6 FFS CAP | 1 |
| REV. A | | | |

NOTE:
HYDRAULIC FITTING KIT: 133027

Valve Bank - PN 57572



HYDRAULIC SCHEMATIC



Valve Bank - PN 57572 Parts List

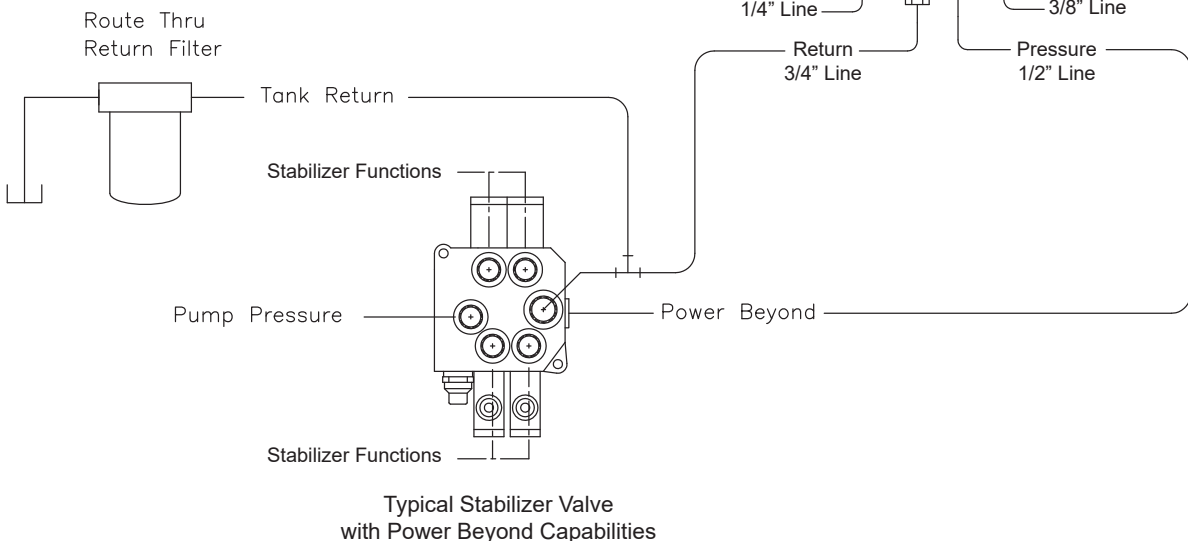
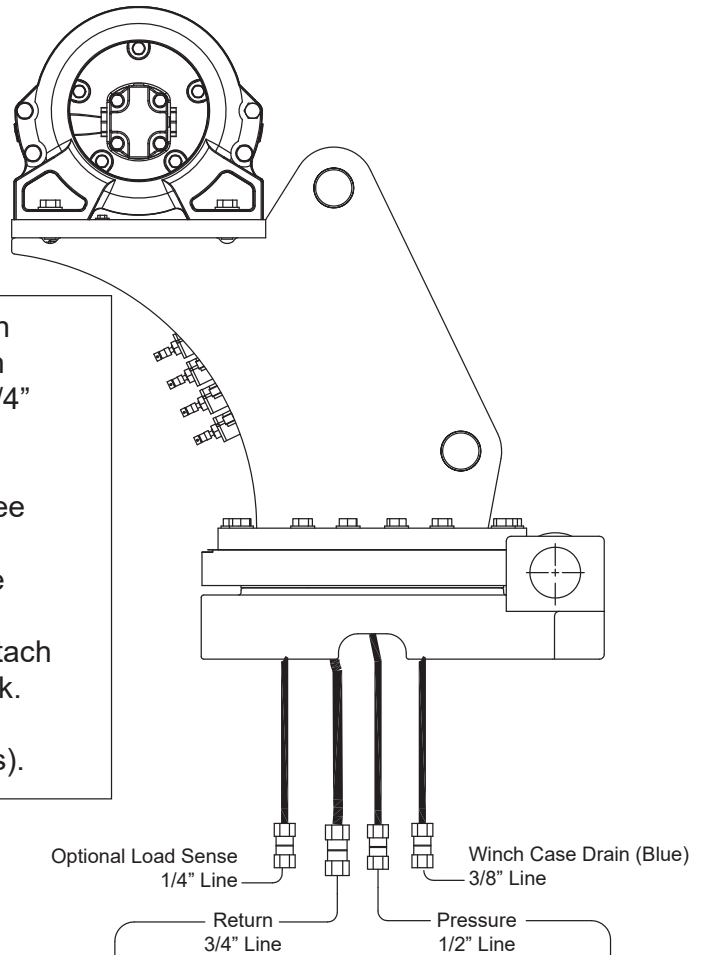
| PN 57572 | | | |
|----------|-------|---------------------------|-----|
| ITEM | PART | DESCRIPTION | QTY |
| 1 | 61059 | VALVE RELIEF 14528 D03 | 1 |
| 2 | 61060 | VALVE FLOW CTRL 14528 D03 | 1 |
| 3 | 61061 | COIL FLOW CTRL 14528 D03 | 1 |
| 4 | 61062 | VALVE TANDEM 14528 D03 | 3 |
| 5 | 61063 | VALVE OPEN 14528 D03 | 1 |
| 6 | 61064 | | 8 |

Hydraulic Installation

WARNING

Follow the instructions presented on this page. Failure to follow these instructions may result in death or serious injury.

1. After mounting, locate the pressure and return lines. Note: Pressure line is 1/2" hose; Winch Case Drain Line is 3/8" hose; Return line is 3/4" hose; Optional Load Sense Line is 1/4" hose. Hoses are terminated using swivel fittings.
2. Install hydraulic lines per diagram below. See next page for Case Drain Installation. Note: Stabilizer valve supplies oil to crane using the Power Beyond feature.
3. Install hydraulic reservoir with return filter. Attach pump pressure line to valve, return link to tank.
4. Fill system with hydraulic oil (See Stellar® Lubrication Recommendations for fluid details).



Winch Case Drain Installation

WARNING

Follow the instructions presented on this page. Failure to follow these instructions may result in death or serious injury.

Installing The Winch Case Drain

1. The winch case drain must run directly to the reservoir to ensure no back pressure in the line.
2. Use 3/8" hydraulic hose and fittings rated for a minimum of 300 psi.
3. Locate the winch case drain line at the bottom of the crane base as shown in Fig. 1 (Blue Hose). **Note: Both the main pressure and winch case drane line use a 3/8" swivel fitting. Verify the winch case drain is attached to the hose that is connected to the winch motor.**
4. Attach one end of the winch case drain to 3/8 swivel fitting located in step 3.
5. Route the winch case drain hose directly to the reservoir.
6. Connect the second end of the winch case drain to unshared fitting on the top of the reservoir as shown in Fig 2.

Fig.1

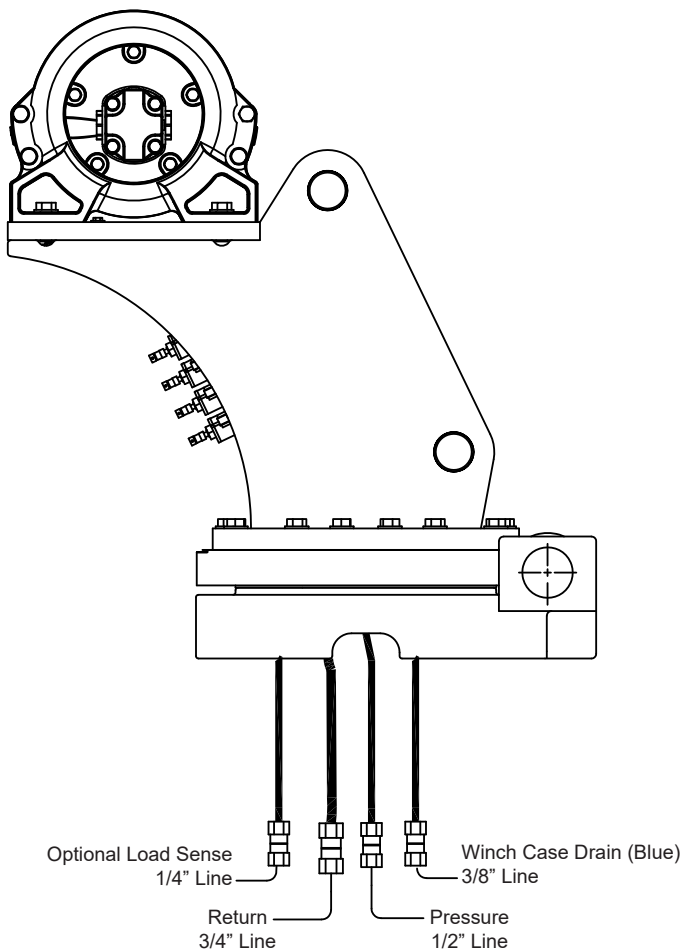
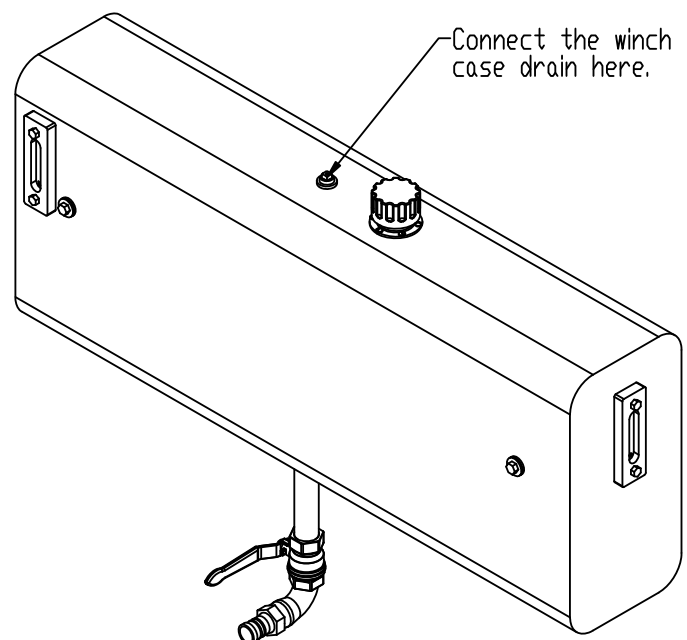
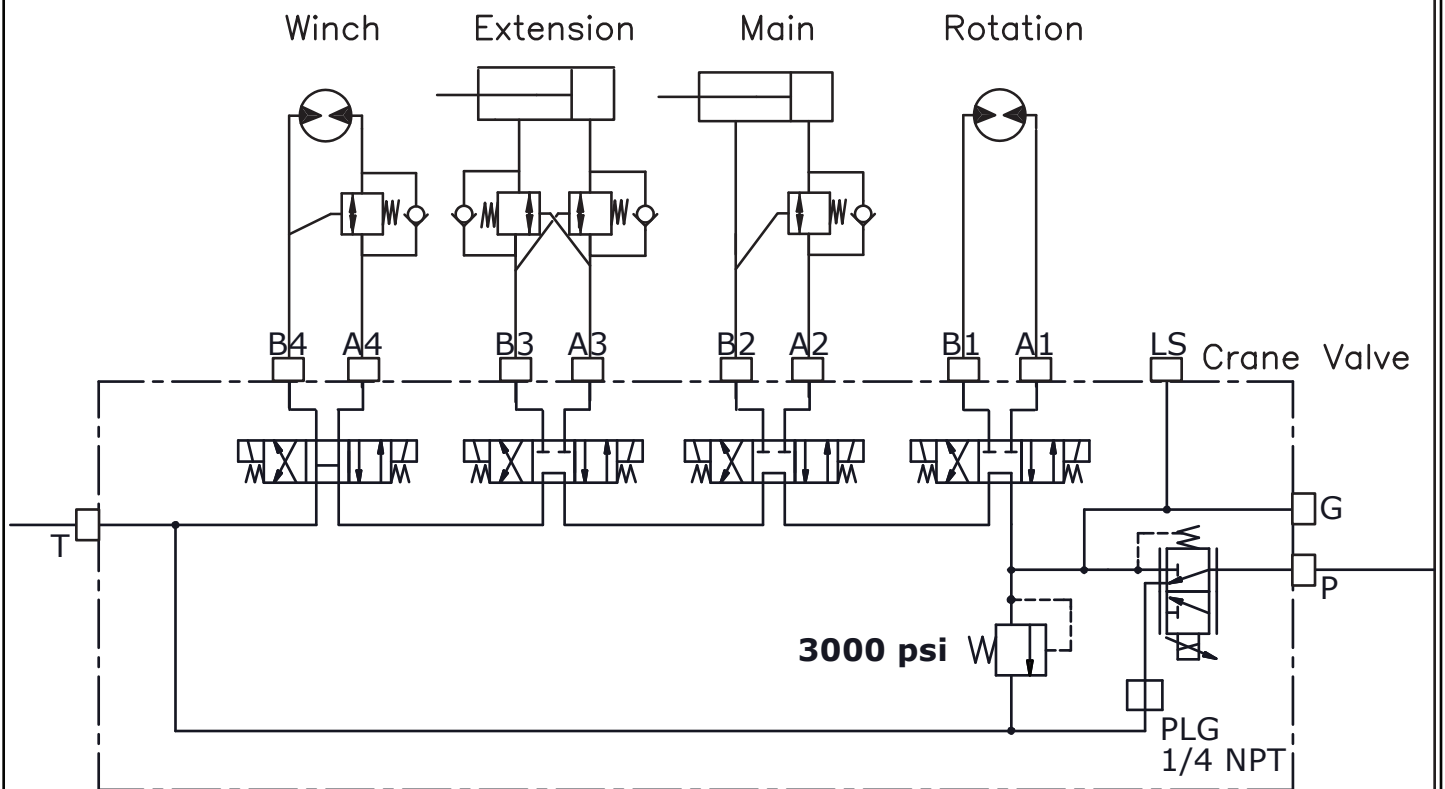


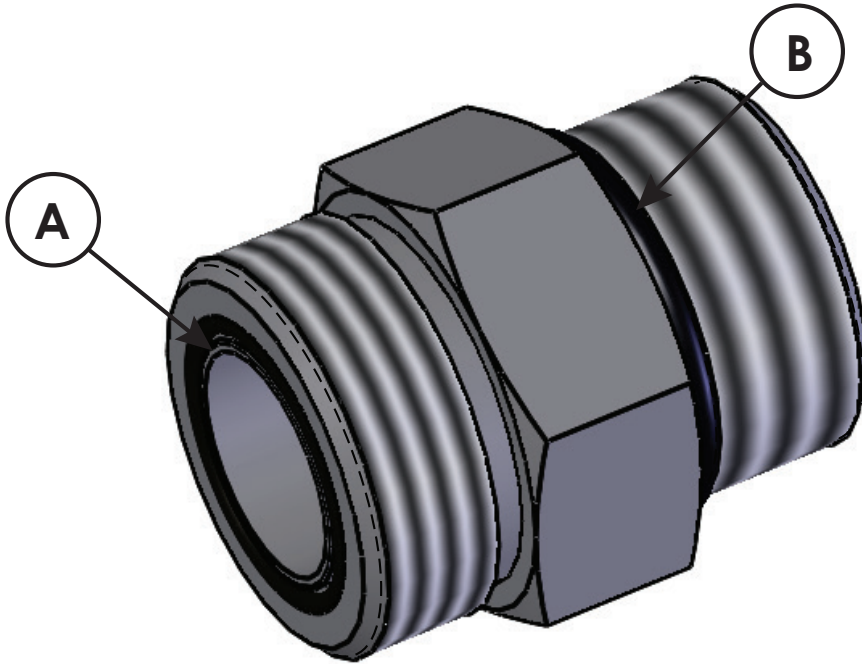
Fig. 2



Hydraulic System



Face Seal/O-Ring Size Chart



| Hose Size | Fitting Size | Face Seal (A) Stellar® PN | O-ring Boss (B) Stellar® PN |
|-----------|--------------|------------------------------|--------------------------------|
| 1/4" | #4 | C2027 | D1245 |
| 3/8" | #6 | C2028 | D1246 |
| 1/2" | #8 | C2029 | D1247 |
| 5/8" | #10 | 32223 | D1248 |
| 3/4" | #12 | D1244 | D1249 |
| 1" | #16 | | D1250 |

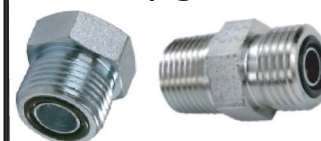
Fittings

Flat Face O-Ring Seal - FFORX

HOSE FITTING ONLY



FS



| SIZE | THREAD SIZE | LB-FT TORQUE |
|------|---------------|--------------|
| -4 | 9/16-18 UNF | 21 |
| -5 | 5/8-18 UNF | 25 |
| -6 | 11/16-16 UN | 40 |
| -8 | 13/16-16 UN | 46 |
| -10 | 1-14 UNS | 50 |
| -12 | 1-3/16-12 UN | 75 |
| -16 | 1-7/16-12 UN | 104 |
| -20 | 1-11/16-12 UN | 141 |
| -24 | 2-12 UN | 166 |
| -32 | 2-1/2-12 UN | 423 |

SAE 37° JIC

HOSE FITTING & FEMALE SWIVEL FITTINGS



JIC



| SIZE | THREAD SIZE | LB-FT TORQUE |
|------|---------------|--------------|
| -2 | 5/16-24 UNF | 7 |
| -3 | 3/8-24UNF | 9 |
| -4 | 9/16-18 UNF | 13 |
| -5 | 5/8-18 UNF | 16 |
| -6 | 11/16-16 UN | 20 |
| -8 | 13/16-16 UN | 41 |
| -10 | 1-14 UNS | 64 |
| -12 | 1-3/16-12 UN | 89 |
| -16 | 1-7/16-12 UN | 122 |
| -20 | 1-11/16-12 UN | 143 |
| -24 | 2-12 UN | 178 |
| -32 | 2-1/2-12 UN | 275 |

Fittings - Continued

O-Ring Boss

HYDRAULIC FITTING ONLY



| -SIZE | THREAD SIZE | ORB | AORB |
|-------|--------------|-----|------|
| -4 | 7/16-20 UNF | 15 | 23 |
| -6 | 9/16-18 UNF | 24 | 32 |
| -8 | 3/4-16 UNF | 40 | 55 |
| -10 | 7/8-14 UNF | 61 | 76 |
| -12 | 1-1/16-12 UN | 101 | 116 |
| -16 | 1-5/16-12 UN | 120 | 119 |
| -20 | 1/5/8-12 UN | 125 | 125 |
| -24 | 1-7/8-12 UN | 140 | 140 |
| -32 | 2-1/2-12 UN | 157 | 157 |

Face Seal Female Swivel Fittings

HYDRAULIC FITTING ONLY



| -SIZE | THREAD SIZE | LB-FT TORQUE |
|-------|---------------|--------------|
| -4 | 9/16-18 UNF | 13 |
| -6 | 11/16-16 UN | 23 |
| -8 | 13/16-16 UN | 40 |
| -10 | 1-14 UNS | 61 |
| -12 | 1-3/16-12 UN | 86 |
| -16 | 1-7/16-12 UN | 119 |
| -20 | 1-11/16-12 UN | 125 |
| -24 | 2-12 UN | 140 |

Stability Procedure

Definition of Stability for the Stellar Telescopic Crane Products:

A truck is stable until the load cannot be lifted off the ground with the winch, without tipping over the truck. Every Stellar crane installed must be tested for stability to determine the actual load capacity of the final truck package. The actual test data must be recorded and supplied with the truck at the time of in-service and should be kept with the truck at all times. The following procedure will test the truck package for stability and will provide a stability capacity chart. The load limit information shown on the stability capacity chart is formulated on 85% tipping.

Set Up:

1. Locate the truck on a test course in position for loading and engage travel brakes.
2. Set stabilizers so that they make contact with firm, level footing.
3. Operate the crane under partial load to assure operator proficiency and proper machine function.
4. Put the radio into Stability Test Mode:
 - A. Push the four crane function switches up and hold until the screen reads "STB" in the upper right corner (approximately 5 seconds.)



B. At this point, the crane will have enough capacity to handle the weight for the stability test.

C. The radio will timeout of stability mode after 30 minutes or when the E-Stop button is pushed.

NOTICE

The radio can only be put into stability mode five times. After that, the radio would have to be returned to Stellar to be reprogrammed to allow additional stability testing. All other radio functions will work properly even if stability mode is not available.

Stability Procedure Continued...

14530 Stability Data

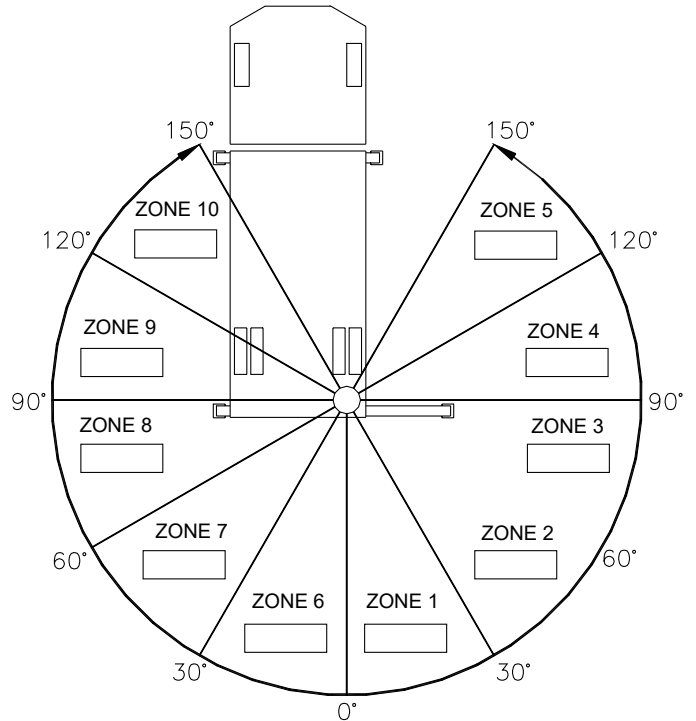
Max Horizontal Reach: 356" (From the center of rotation to boom tip)

Boost Stability Test Weight: 3,650 lbs.

Non-Boost Stability Test Weight: 3100 lbs.

Test Procedure

1. Rotate the crane into Zone 1 position.
2. With the crane fully retracted and the boom horizontal, winch the test weight off the ground.
Note: Keep weight within six inches of the ground at all times.
3. Extend the boom outward until full extension has been reached or until the truck becomes unstable (Again, use the winch to keep the weight within six inches of the ground.)
4. If the boom goes full extension without becoming unstable, the crane is termed stable for this zone and 100% can be written in the Zone 1 data box.
5. If the truck becomes unstable prior to going full extension, retract the boom until the truck becomes stable and measure the horizontal reach in this position (center of rotation to boom tip). This is the stable horizontal reach for this zone. Stable horizontal reach divided by Maximum horizontal reach multiplied by 100 equals the percentage of rated capacity for this zone. Use the following formula to determine the percentage of rated capacity:

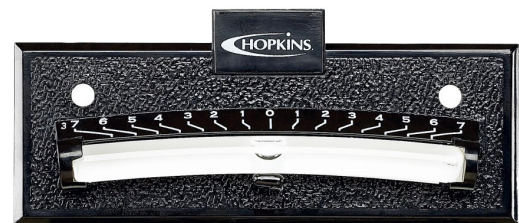


$$\frac{\text{Stable Horizontal Reach}}{\text{Max Horizontal Reach}} \times 100 = \text{Percentage of Rated Capacity}$$

6. Record this number in the data box for Zone 1. This is the revised capacity due to stability for this zone.
7. Repeat this procedure for each zone until the worksheet is completed.
8. This is the revised capacity based on stability of this package.

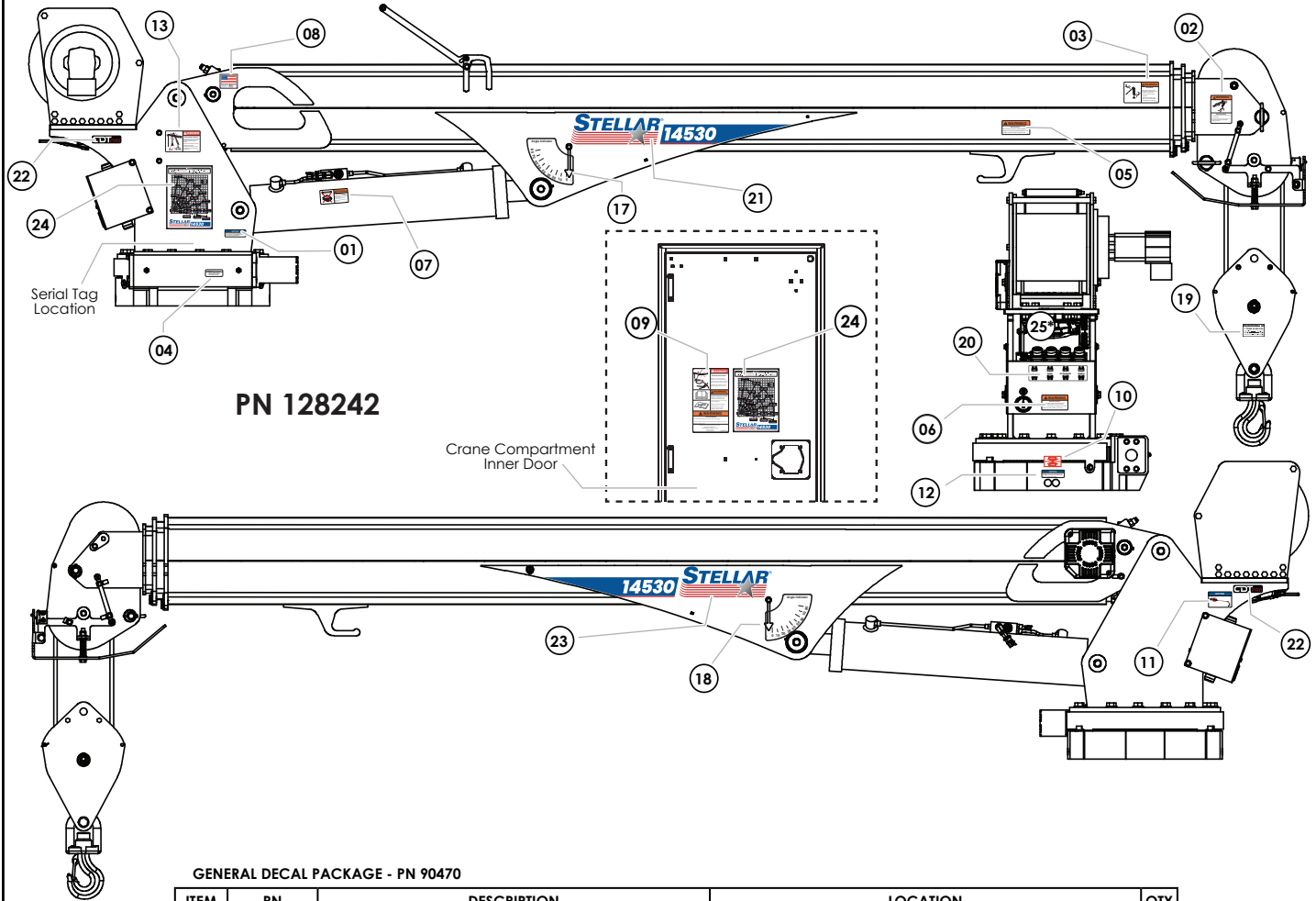
Crane Load Level Indicator

Stellar® Cranes are shipped with a load level indicator that is used to determine if the truck is level (side to side) before using the crane to pick/move a load. This level should be installed in the isolated crane compartment of the body. If level indicator is missing or damaged, please contact Stellar Customer Support for a replacement.



PN 76483

Decal Kit - PN 128242



PN 128242

GENERAL DECAL PACKAGE - PN 90470

| ITEM | PN | DESCRIPTION | LOCATION | QTY |
|------|-------|------------------------------------|----------------------------------|-----|
| 01 | 15172 | DECAL ASME/ANSI B30.22/B30.5 | Crane Mast | 1 |
| 02 | 12300 | DECAL WARNING TWO BLOCKING | Crane Horse Head | 1 |
| 03 | 12451 | DECAL WARNING HOISTING PERSONNEL | Main Boom | 1 |
| 04 | 15171 | DECAL GREASE WORM | Crane Base | 1 |
| 05 | 24712 | DECAL WARNING STOW HOOK | Crane Boom above stow hook | 1 |
| 06 | 25159 | DECAL WARNING MANUAL OVERRIDES | Under Valve Bank | 1 |
| 07 | 28256 | DECAL WARNING OVERLOAD DEVICE | Main Cylinder | 1 |
| 08 | 35234 | DECAL STELLAR MADE IN THE USA | Main Boom | 1 |
| 09 | 93936 | DECAL SAFETY & SERV MECH BODY DOOR | Crane Compartment | 1 |
| 10 | 4188 | DECAL ROTATION ALIGNMENT | Crane Base | 1 |
| 11 | 73929 | DECAL PRESSURE WASH | Crane Mast | 1 |
| 12 | 9188 | DECAL ROTATE/GREASE | Crane Base | 1 |
| 13 | C1179 | DECAL DANGER ELECTROCUTION SMALL | Crane Mast | 2 |
| 14** | C4545 | DECAL DANGER ELECTROCUTION LARGE | Four corners of the body/chassis | 3 |
| 15** | C5910 | DECAL STELLAR 4x9.5 | Suggested: Rear body/tailgate | 1 |
| 16** | C5911 | DECAL STELLAR 2x4.5 | Suggested: Side corners of body | 3 |
| 17 | D1196 | DECAL ANGLE INDICATOR CS | Main Boom | 1 |
| 18 | D1197 | DECAL ANGLE INDICATOR SS | Main Boom | 1 |

14530 DECAL PACKAGE - PN 128724

| ITEM | PN | DESCRIPTION | LOCATION | QTY |
|------|--------|----------------------------------|--|-----|
| 19 | 56486 | DECAL SNATCH BLOCK 7 TON | Snatch Block | 1 |
| 20 | 102469 | DECAL VB CONTROL 14530 | On side of Crane Mast | 1 |
| 21 | 132724 | DECAL ID 14530 HSS PRE-MASKED CS | Main Boom (Curb Side) | 1 |
| 22 | 122920 | DECAL CDT PRO MAST | Crane Mast (Both Sides) | 2 |
| 23 | 132723 | DECAL ID 14530 HSS PRE-MASKED SS | Main Boom (Street Side) | 1 |
| 24 | 132722 | DECAL CAPACITY 14530 HSS | Main Boom and Crane Compartment | 2 |
| 25* | 132725 | DECAL CNTRL ID 14530 V3 CDT PRO | CDT PRO ONLY - Valve controller inside mast | 1 |
| 25* | 132726 | DECAL ID 14530 V3 CDT PRO NB | CDT PRO NONBOOST ONLY - Valve controller inside mast | 1 |

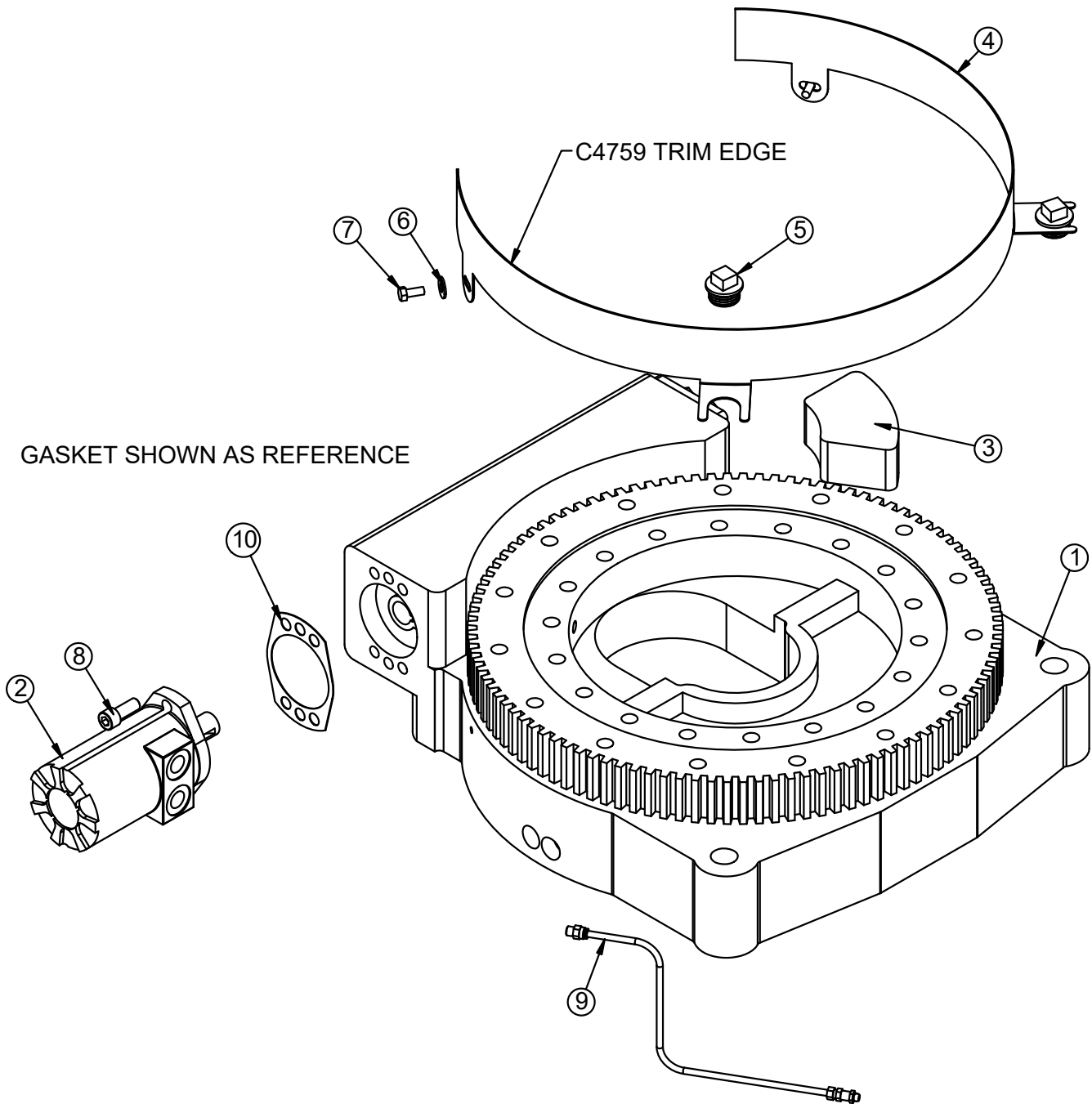
* For CDTpro™ equipped cranes, use PN 132725. For CDTprononboost™ equipped cranes, use PN 132726.

Chapter 3 - Assembly Drawings

Chapter Contents

| | |
|--|----|
| Base Assembly - PN 26205 | 30 |
| Base Assembly - PN 26205 Parts List | 31 |
| Gear Bearing - PN 25140..... | 32 |
| Gear Bearing - PN 25140..... | 33 |
| Mast Assembly - PN 128043..... | 34 |
| Mast Assembly - PN 128043 Parts List..... | 35 |
| Main Boom Assembly - PN 127066 | 36 |
| Main Boom Assembly - PN 127066 Parts List | 37 |
| Extension Boom Assembly - PN 127211..... | 38 |
| Extension Boom Assembly - PN 127211 Continued | 39 |
| Extension Boom Assembly - PN 127211 Parts List..... | 40 |
| Extension Boom Assembly - PN 127211 Parts List Cont..... | 41 |
| Main Cylinder Assembly - PN 127218..... | 42 |
| Main Cylinder Assembly - PN 127218 Parts List..... | 43 |
| Extension Cylinder Assembly - PN 128041..... | 44 |
| Extension Cylinder Assembly - PN 128041 Parts List..... | 45 |
| Cable & Hook Assembly - PN 56274 | 46 |
| Cable & Hook Assembly - PN 56274 Parts List | 47 |
| Wireless Remote Replacement Parts | 48 |
| Wireless Remote Replacement Parts List..... | 49 |

Base Assembly - PN 26205



Base Assembly - PN 26205 Parts List

PN 26205

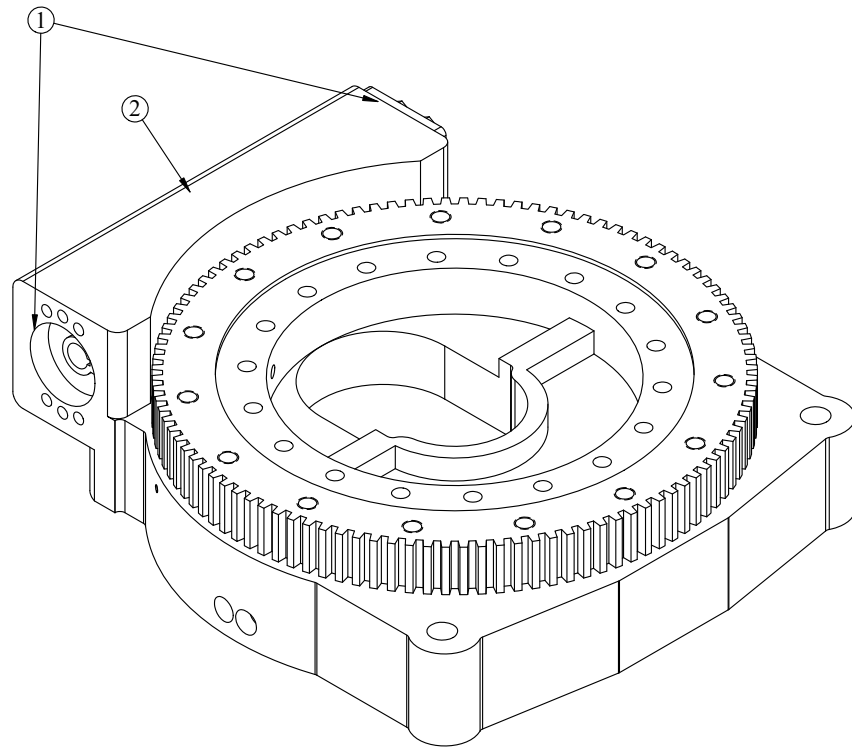
| ITEM | PART | DESCRIPTION | QTY |
|--------|--------|---|-----|
| 1 | 25140 | BEARING SWING DRIVE CAST BASE 14528 | 1 |
| 2 | 26206P | MOTOR HYD ROSS MK080613AAAB | 1 |
| 3 | 26207 | STOP 14528 400 SLIDE | 1 |
| 4 | 44554 | GUARD TTB 14528 CRANE LZR | 1 |
| 5 | 26774 | CAP SCR 1.25-7X0.63 PLASTIC | 2 |
| 6 | 0343 | WASHER 0.31 USS FLAT ZINC | 2 |
| 7 | 0420 | CAP SCR 0.31-18X0.75 HHGR5 | 2 |
| 8 | D1307 | CAP SCR 0.50-13X1.25 SHGR8 W/ RED PATCH | 2 |
| 9 | 104018 | HARDWARE KIT BASE ASM 30IN GREASE LINE | 1 |
| 10 | 21151 | GASKET MOTOR 008-10056-1 | 1 |
| REV. G | | | |

ITEMS NOT SHOWN

| PART | DESCRIPTION | QTY. |
|-------|---------------------------------------|---------|
| C4759 | TRIM EDGE 0.06X0.56 AL 0.44 BULB (RM) | 4.25 FT |

NOTE:
HARDWARE KIT: 133038

Gear Bearing - PN 25140



Gear Bearing - PN 25140

| PN 25140 | | | |
|----------|-------|------------------------------------|-----|
| ITEM | PART | DESCRIPTION | QTY |
| 1 | 38194 | BEARING AND SEAL KIT 14528 GP CAST | 1 |
| 2 | 38198 | WORM 14528 GP 170-10072-1 | 1 |

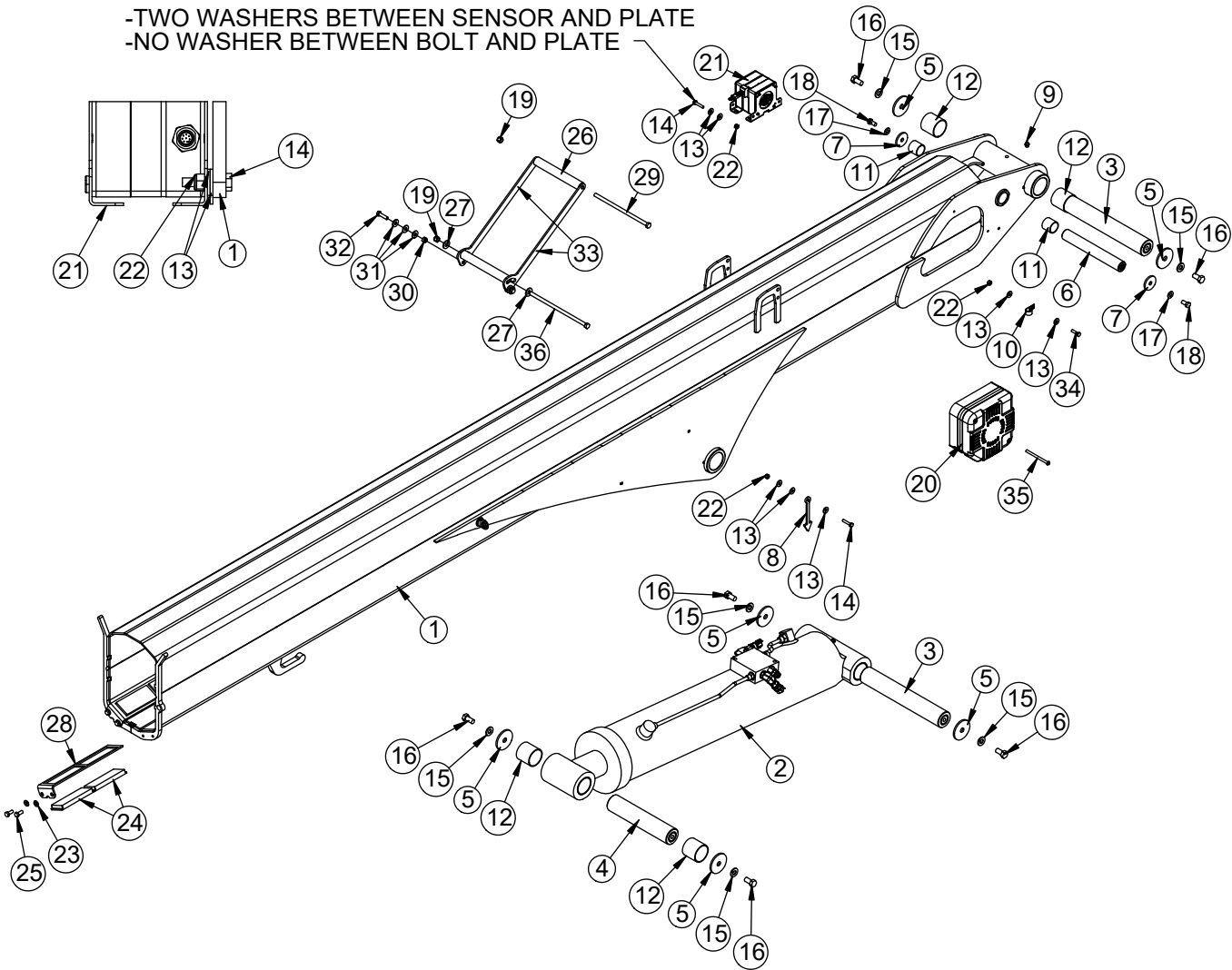
Mast Assembly - PN 128043 Parts List

| PN 128043 | | | |
|-----------|--------|-----------------------------------|-----|
| ITEM | PART | DESCRIPTION | QTY |
| 1 | 128044 | MAST 14530 HSS | 1 |
| 2 | C6219 | WASHER 0.75 SAE FLAT YELLOW GR8 | 13 |
| 3 | C1028 | CAP SCR 0.75-10X3.00 HHGR8 | 13 |
| 4 | 26775 | WINCH 7000 TULSA 707W | 1 |
| 5 | 128245 | PLATE RADIO MNT 145 HSS | 1 |
| 6 | 57572 | VB 4 EATON D03 14528 | 1 |
| 7 | 56661 | COVER VB 14528 | 1 |
| 8 | 44533 | BUSHING COMPOSITE FIBER 2.00X0.75 | 6 |
| 9 | 50375 | CAP SCR 0.63-11X2.75 HHGR8 | 2 |
| 10 | C5902 | WASHER 0.63 SAE FLAT YELLOW GR8 | 8 |
| 11 | 24868 | NUT 0.63-11 HHGR8 NYLOC | 8 |
| 12 | 53067 | NUT 0.63-11 JAM NYLOC | 2 |
| 13 | C0922 | CAP SCR 0.31-18X1.00 HHGR5 | 4 |
| 14 | 0343 | WASHER 0.31 USS FLAT | 8 |
| 15 | 0484 | CAP SCR 0.31-18X0.50 HHGR5 | 4 |
| 16 | 84053 | CAP SCR 0.63-11X2.25 HHGR8 | 6 |
| 17 | D0894 | CAP SCR #10-24X0.75 BTNHD SS | 4 |
| 18 | D0178 | WASHER #10 SAE FLAT | 4 |
| 19 | 26034 | NUT #10-24 HH NYLOC | 4 |
| 20 | 0481 | CAP SCR 0.25-20X2.00 HHGR5 | 2 |
| 21 | 0340 | WASHER 0.25 USS FLAT | 4 |
| 22 | 0333 | NUT 0.25-20 HHGR5 NYLOC | 2 |

REV. A

NOTES;
HARDWARE KITS: 132733, 132734

Main Boom Assembly - PN 127066

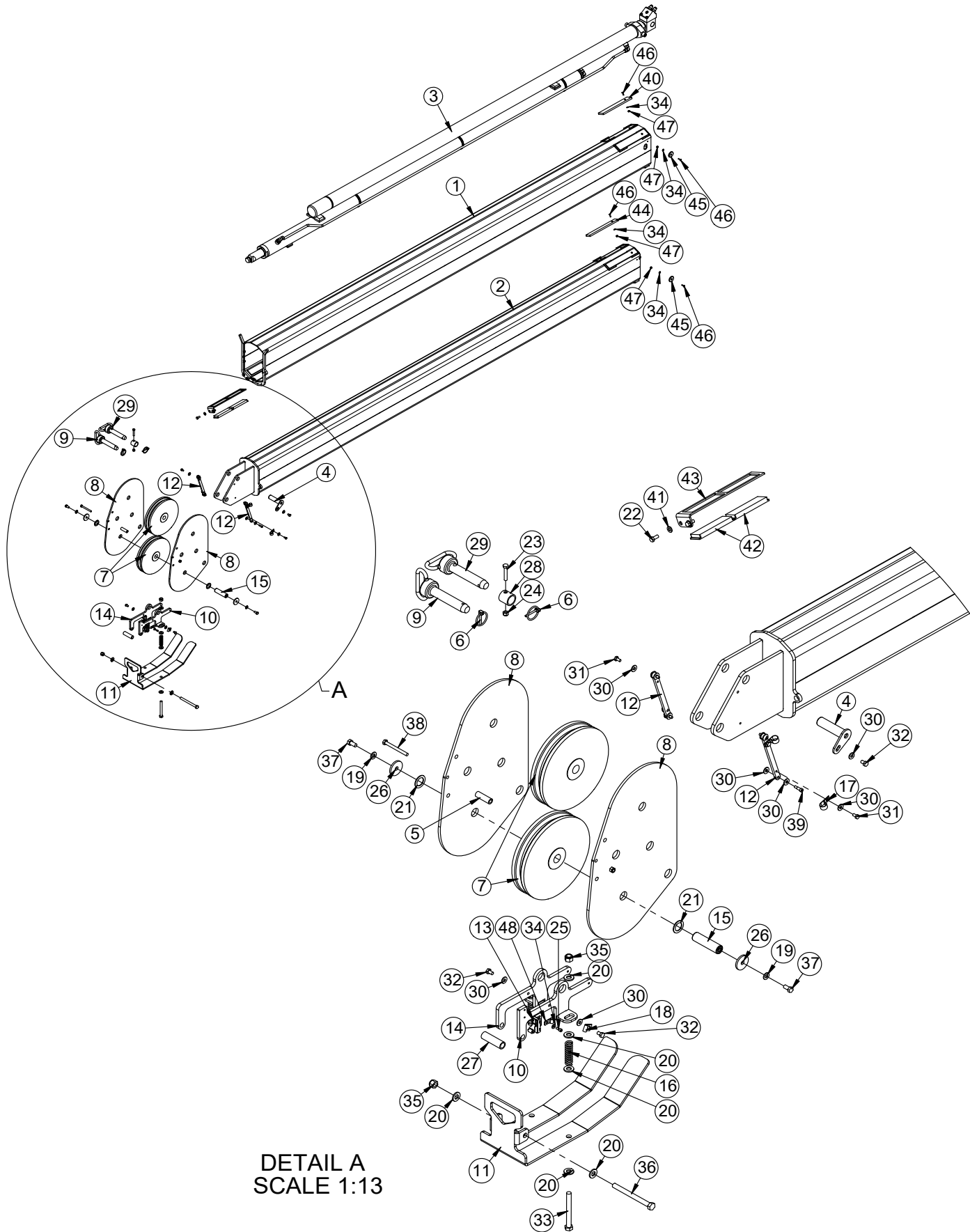


Main Boom Assembly - PN 127066 Parts List

| PN 127066 | | | |
|----------------|---------|------------------------------------|-----|
| ITEM | PART | DESCRIPTION | QTY |
| 1 | 127067 | INNER BOOM 14530 HSS | 1 |
| 2 | 127218 | CYLINDER ASM 14530 HSS | 1 |
| 3 | 13364CR | PIN 2.00X12.69 D&T ZC | 2 |
| 4 | 26213CR | PIN 2.00X9.63 D&T ZC | 1 |
| 5 | 9142 | PIN CAP 0.56X2.50X0.19 YZ | 6 |
| 6 | 26214CR | PIN 1.25X9.19 D&T ZC | 1 |
| 7 | 9320 | PIN CAP 0.44X1.75X0.19 YZ | 2 |
| 8 | 102289 | PLATE ANGLE INDICATOR 76 HSS BLACK | 2 |
| 9 | C1592 | ZERK 1/8 NPT STRAIGHT | 1 |
| 10 | C0078 | CLAMP 0.38 BLK VINYL | 1 |
| 11 | 0249 | BUSHING BPC20DXR20 1.25X1.25 | 4 |
| 12 | 4381 | BUSHING BPC32DXR32 2.00X2.00 | 4 |
| 13 | 0340 | WASHER 0.25 USS FLAT | 12 |
| 14 | 0437 | CAP SCR 0.25-20X1.25 HHGR5 | 4 |
| 15 | D0790 | WASHER 0.50 SAE FLAT YELLOW GR8 | 6 |
| 16 | 10172 | CAP SCR 0.50-13X1.00 HHGR8 | 6 |
| 17 | C6353 | WASHER 0.38 SAE FLAT YELLOW GR8 | 2 |
| 18 | 9843 | CAP SCR 0.38-16X0.75 HHGR8 | 2 |
| 19 | 0347 | NUT 0.38-16 HHGR5 NYLOC | 2 |
| 20 | 123760 | CORD REEL 29FT 4 WIRE SEALED | 1 |
| 21 | 110460 | ENCODER BOOM VECTOR 6M CANOPEN | 1 |
| 22 | 0333 | NUT 0.25-20 HHGR5 NYLOC | 5 |
| 23 | 5591 | WASHER 0.31 SAE FLAT YELLOW GR8 | 4 |
| 24 | 107026 | WEAR PAD INNER 76 HSS | 4 |
| 25 | 0420 | CAP SCR 0.31-18X0.75 HHGR5 | 4 |
| 26 | 127353 | SPACER ROPE GUIDE 145 HSS UHMW | 2 |
| 27 | 0346 | WASHER 0.38 USS FLAT | 2 |
| 28 | 106801 | PLATE WEAR PAD GUIDE INNER 76 HSS | 2 |
| 29 | 87979 | CAP SCR 0.38-16X8.50 HHGR5 | 1 |
| 30 | 0342 | NUT 0.31-18 HHGR5 NYLOC | 2 |
| 31 | 0343 | WASHER 0.31 USS FLAT | 6 |
| 32 | 0485 | CAP SCR 0.31-18X1.25 HHGR5 | 2 |
| 33 | 109670 | PLATE ROPE GUIDE 76 HSS SLOT BLACK | 2 |
| 34 | 0480 | CAP SCR 0.25-20X1.00 HHGR5 | 1 |
| 35 | 66795 | CAP SCR 0.25-20X3.50 BTNHD SS | 2 |
| 36 | 12168 | CAP SCR 0.38-16X9.00 HHGR5 | 1 |
| REV. A: REQ824 | | | |

NOTES;
HARDWARE KITS: 97628, 118559, 133026, 118868.

Extension Boom Assembly - PN 127211



DETAIL A
SCALE 1:13

Extension Boom Assembly - PN 127211 Parts List

| PN 127211 | | | |
|-----------|----------|---|-----|
| ITEM | PART | DESCRIPTION | QTY |
| 1 | 127212 | EXT BOOM 1ST 14530 HSS | 1 |
| 2 | 127215 | EXT BOOM 2ND 14530 HSS | 1 |
| 3 | 128041 | CYLINDER EXT ASM 14530 HSS | 1 |
| 4 | 13399ZP | PIN TEAR DROP 1.00X3.81 ZC | 1 |
| 5 | 27719 | SPACER BOOM TIP 6620 UHMW | 1 |
| 6 | 5753 | PIN 0.19X1.56 LYNCH | 2 |
| 7 | 24557 | SHEAVE 14528 10.00 DIA .50R/1.94 THK | 2 |
| 8 | 127255 | PLATE SHEAVE MOUNT 145 HSS PC BLACK | 2 |
| 9 | 12824 | PIN HITCH 1.00X4.50 | 1 |
| 10 | 131952 | MNT CRADLE LH FS/CRADLE A2B 145 HSS PC YELLOW | 1 |
| 11 | 128499 | PLATE CRADLE A2B 145 HSS PC YELLOW | 1 |
| 12 | 106982 | PLATE LINK FS/CRADLE 76 HSS TAPPED YELLOW | 2 |
| 13 | 29085 | SWITCH LIMIT E1117-B9111-6C | 1 |
| 14 | 131953 | MNT CRADLE RH FS/CRADLE A2B 145 HSS PC YELLOW | 1 |
| 15 | 106985CR | PIN 1.00X3.69 D&T | 1 |
| 16 | 27710 | SPRING ANTI 2 BLOCK CRADLE A2B | 2 |
| 17 | C0078 | CLAMP 0.38 BLK VINYL | 2 |
| 18 | 31279 | CLAMP 0.31D 0.75W 0.40HL GALV BLK VINYL | 1 |
| 19 | C6353 | WASHER 0.38 SAE FLAT YELLOW GR8 | 2 |
| 20 | D0790 | WASHER 0.50 SAE FLAT YELLOW GR8 | 10 |
| 21 | 0867 | MACHY WASHER 1.00ID 14GA | 2 |
| 22 | 0420 | CAP SCR 0.31-18X0.75 HHGR5 | 4 |
| 23 | 0487 | CAP SCR 0.31-18X1.75 HHGR5 | 1 |
| 24 | 0342 | NUT 0.31-18 HHGR5 NYLOC | 2 |
| 25 | 31132 | CAP SCR #10-24X0.550 SH SS 18-8 | 2 |
| 26 | 9320 | PIN CAP 0.56X3.50X.25 | 2 |
| 27 | 106986 | PIPE 0.50X2.81 SCH40 YELLOW | 1 |
| 28 | 106984 | TUBE SPACER HITCH PIN 1.00X1.38 BLACK | 1 |
| 29 | 45125 | PIN HITCH 1.00 FORK KPCC | 1 |
| 30 | 0340 | WASHER 0.25 USS FLAT | 15 |
| 31 | 0478 | CAP SCR 0.25-20X0.50 HHGR5 | 4 |
| 32 | 0484 | CAP SCR 0.31-18X0.50 HHGR5 | 3 |
| 33 | 0507 | CAP SCR 0.50-13X4.50 HHGR5 | 2 |
| 34 | D0178 | WASHER #10 SAE FLAT | 10 |
| 35 | C6106 | NUT 0.50-13 HHGR5 NYLOC | 3 |
| 36 | C1001 | CAP SCR 0.50-13X5.50 HHGR5 | 1 |
| 37 | 9843 | CAP SCR 0.38-16X0.75 HHGR8 | 2 |
| 38 | 12178 | CAP SCR 0.31-18X3.25 HHGR5 | 1 |
| 39 | 106806 | BOLT SHOULDER 0.25X0.50 0.25-20X0.38 | 4 |
| 40 | 106802 | WEAR PAD 1ST EXT TOP 76 HSS | 2 |
| 41 | 5591 | WASHER 0.31 SAE FLAT YELLOW GR8 | 4 |

Extension Boom Assembly - PN 127211 Parts List Cont.

| PN 127211 | | | |
|-------------------|--------|---------------------------------------|-----|
| ITEM | PART | DESCRIPTION | QTY |
| 42 | 107027 | WEAR PAD 1ST EXT BOTTOM 76 HSS | 4 |
| 43 | 106860 | PLATE WEAR PAD GUIDE 76 HSS 1ST FRONT | 2 |
| 44 | 106862 | WEAR PAD 2ND EXT TOP 76 HSS | 2 |
| 45 | 107029 | WEAR PAD 0.19X1.50 ROUND | 4 |
| 46 | D0896 | CAP SCR #10-24X0.75 FHSB SS | 8 |
| 47 | 26034 | NUT #10-24 HH NYLOC | 8 |
| 48 | C5606 | CLAMP 0.25 BLK VINYL | 1 |
| REV. B - 20260423 | | | |

NOTES:

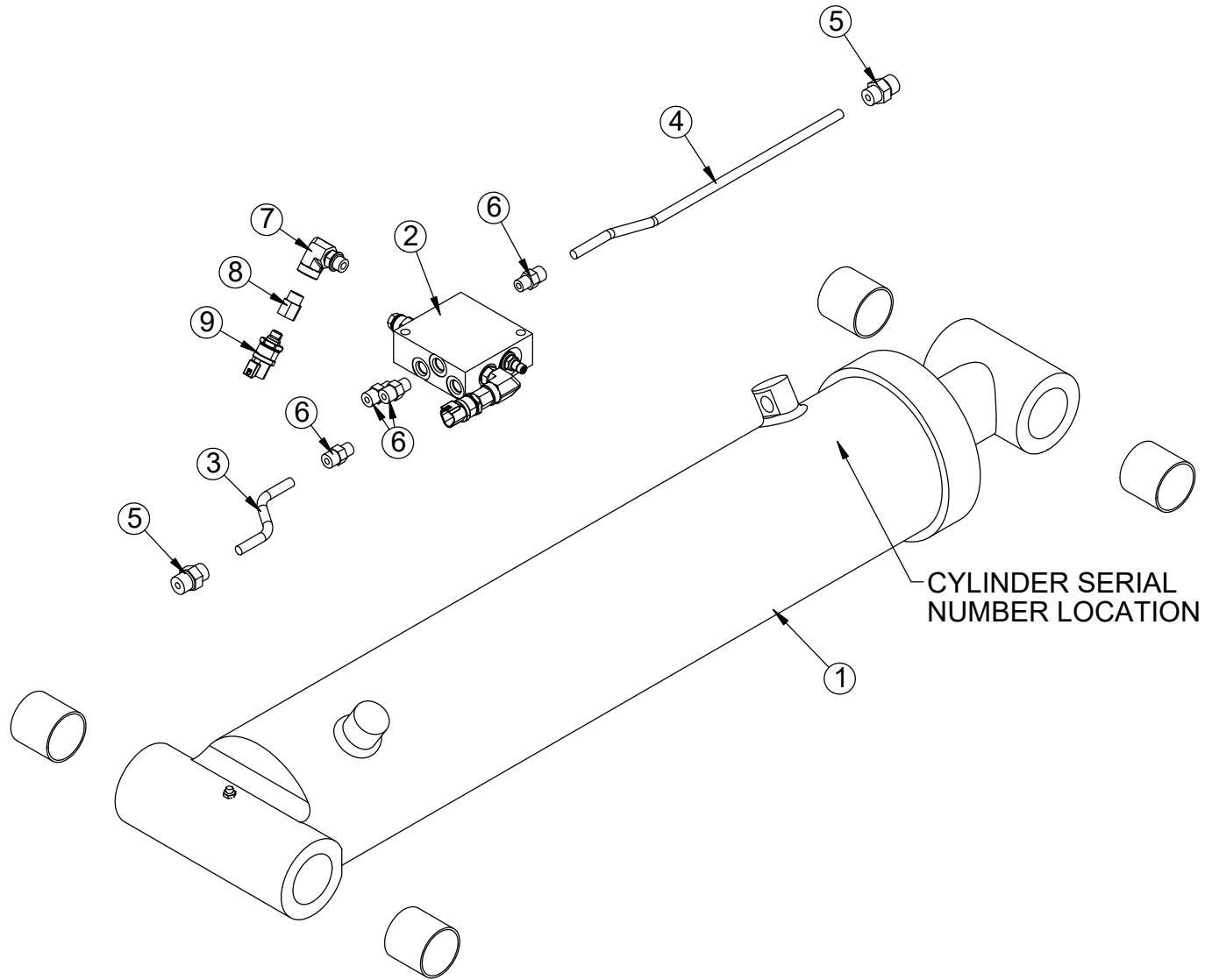
HARDWARE KITS:

118869

118870

THIS PAGE LEFT INTENTIONALLY BLANK.

Main Cylinder Assembly - PN 127218



Main Cylinder Assembly - PN 127218 Parts List

| PN 127218 | | | |
|-----------|--------|---|-----|
| ITEM | PART | DESCRIPTION | QTY |
| 1 | 26198 | CYLINDER INNER 6.00X25.75 | 1 |
| 2 | 113695 | MANIFOLD SINGLE LA C'BAL W/PRV | 1 |
| 3 | 128237 | TUBE ASM 0.38X4.37 MAIN CYL 14530 HSS YZ | 1 |
| 4 | 128238 | TUBE ASM 0.38X14.91 MAIN CYL 14530 HSS YZ | 1 |
| 5 | C1854 | FTG 6-8 MFS-MORB STRAIGHT | 2 |
| 6 | 0279 | FTG 6-6 MFS-MORB STRAIGHT | 4 |
| 7 | 3861 | FTG 6-6 MAORB-FORB 90 | 2 |
| 8 | 15111 | FTG 6-4 MORB-FORB STRAIGHT REDUCER | 2 |
| 9 | 108268 | TRANSDUCER PRESSURE 0-5000PSI #4 SAE DT | 2 |
| REV. A | | | |

NOTES:

C-BALANCE VALVE: 113696

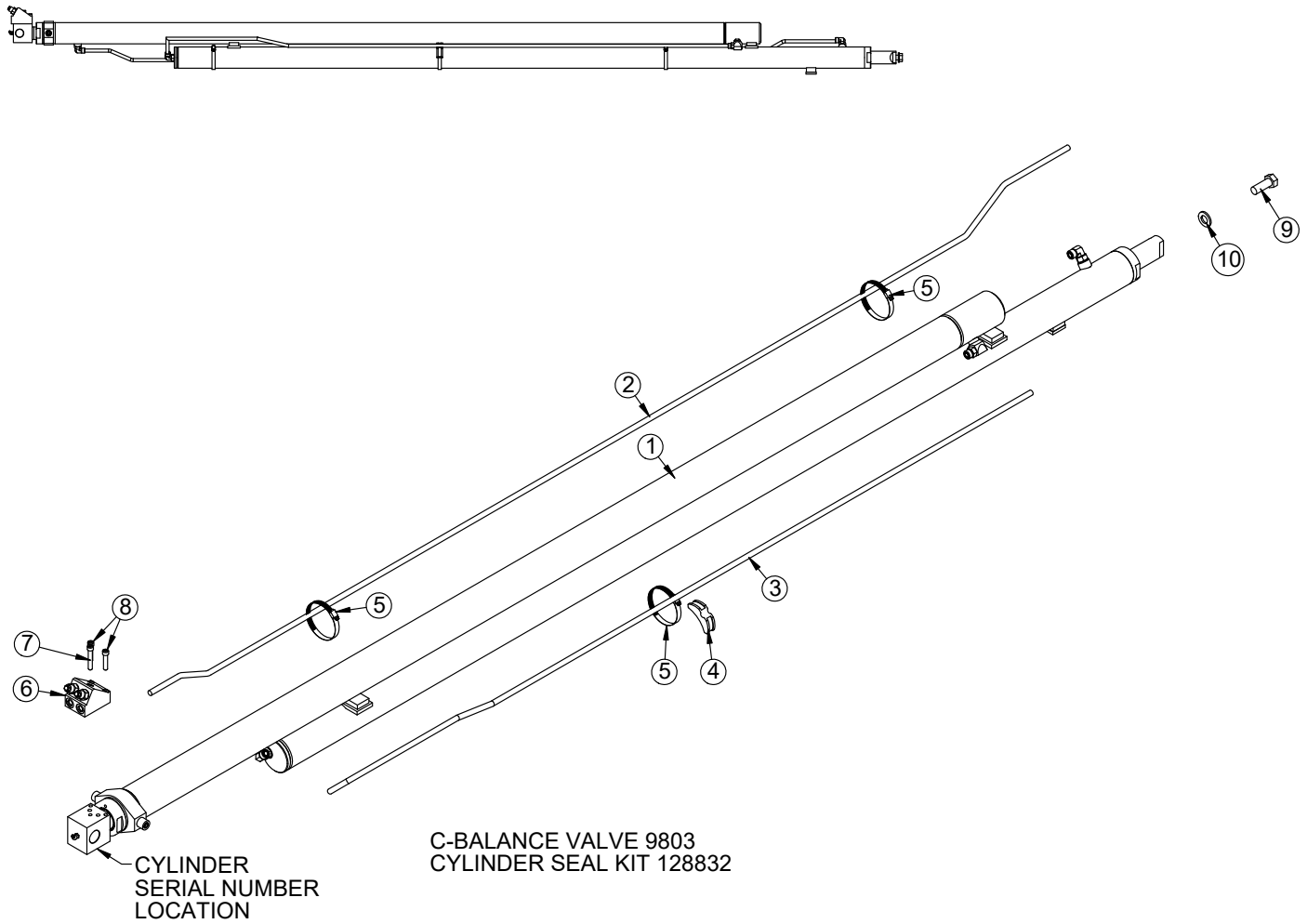
PRESSURE REDUCING VALVE: 35454

CYLINDER SEAL KIT: 65935

BUSHING PART NUMBER: 4381

BUSHINGS INCLUDED IN 26198.

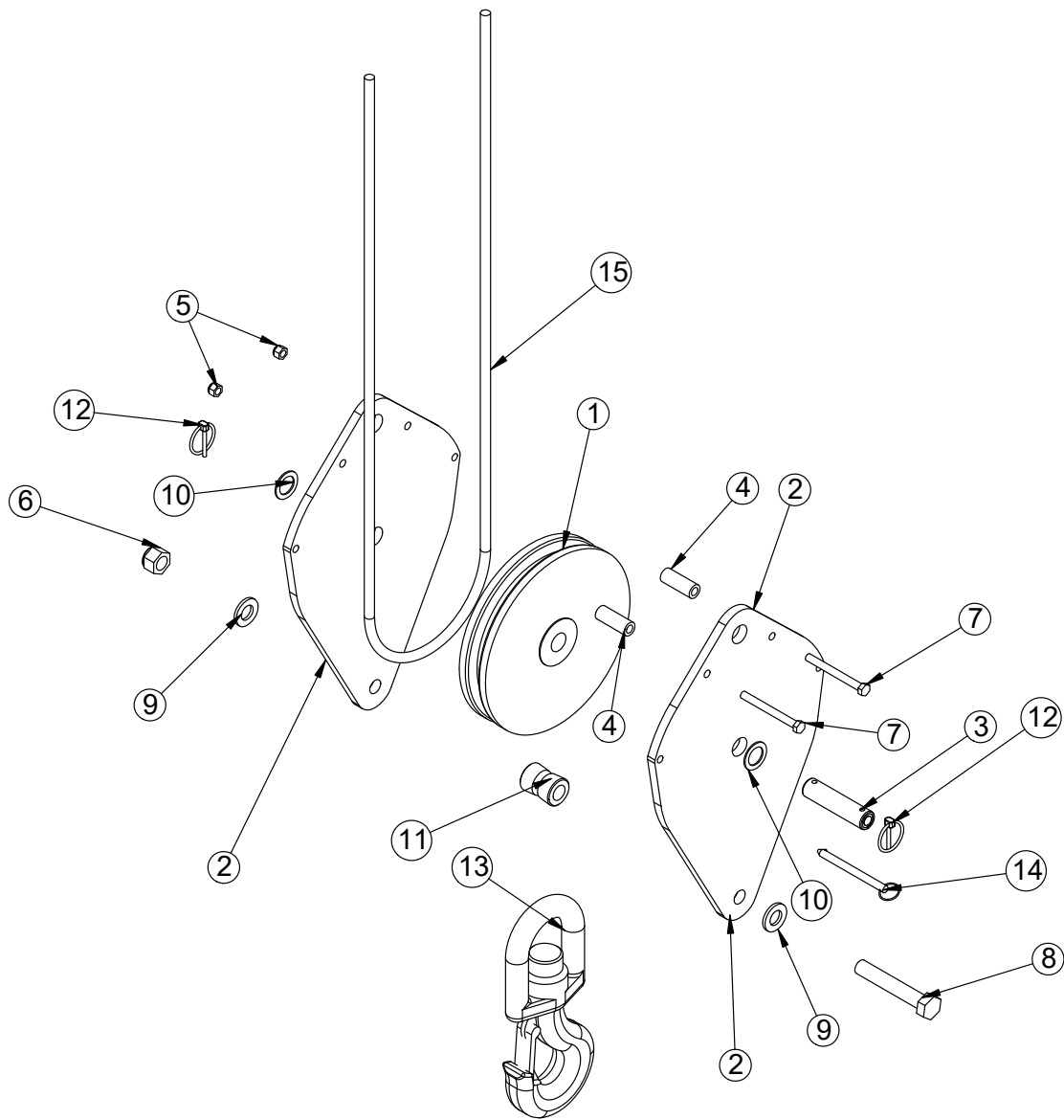
Extension Cylinder Assembly - PN 128041



Extension Cylinder Assembly - PN 128041 Parts List

| PN 128041 | | | |
|-----------|--------|--|-----|
| ITEM | PART | DESCRIPTION | QTY |
| 1 | 128042 | CYLINDER EXT 14530 HSS 2 STAGE 3.00/3.00 | 1 |
| 2 | 28843 | TUBE ASM 0.50X 119.75 EXT CYL 14528 YZ | 1 |
| 3 | 73490 | TUBE ASM 0.50X89.25 EXT CYL 14530 ZC | 1 |
| 4 | 18701 | CLAMP PORT TUBE ZR518 | 1 |
| 5 | 24729 | HOSE CLAMP #52 3.00 - 3.75 | 3 |
| 6 | 28840 | MANIFOLD ASM14528 EXT CBBB-LJN-XVO | 1 |
| 7 | 14601 | CAP SCR 0.38-16X2.25 SH ZC | 1 |
| 8 | 11882 | CAP SCR 0.38-16X1.75 SH ZC | 2 |
| 9 | 4543 | CAP SCR 0.75-10X2.00 HHGR8 | 1 |
| 10 | C6219 | WASHER 0.75 SAE FLAT YELLOW GR8 | 1 |

Cable & Hook Assembly - PN 56274

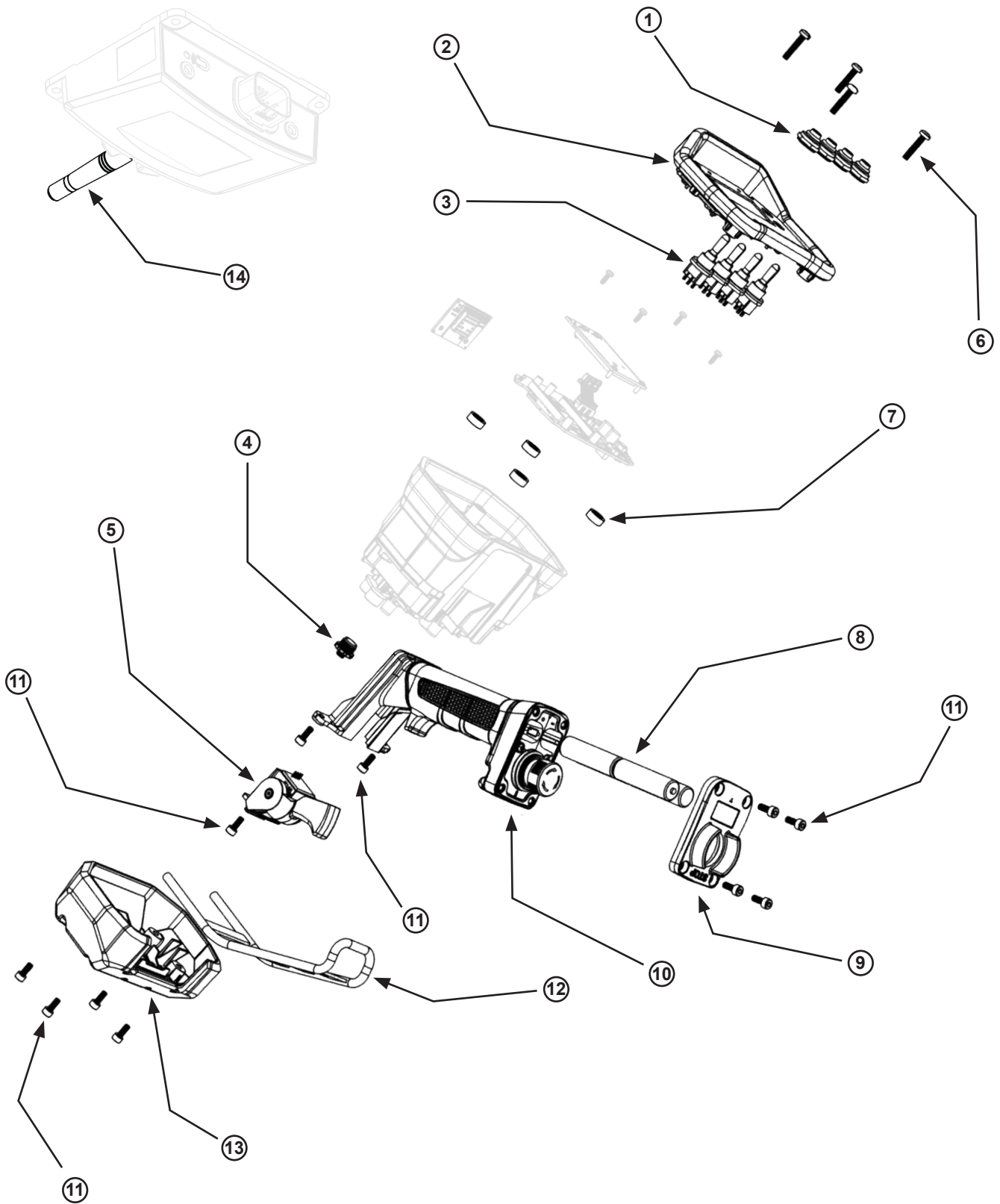


Cable & Hook Assembly - PN 56274 Parts List

| PN 56274 | | | |
|----------|---------|---|-----|
| ITEM | PART | DESCRIPTION | QTY |
| 1 | 24557 | SHEAVE 14528 10.00 DIA .50R/1.94 THK | 1 |
| 2 | 56272 | PLATE SNATCH BLOCK 14528 PC RED ET-5391 | 2 |
| 3 | 39874CR | PIN 1.00X4.06 COTTER ZC | 1 |
| 4 | 44643 | COLLAR 0.44X0.75X2.00 ZINC COATED | 2 |
| 5 | 0347 | NUT 0.38-16 HHGR5 NYLOC | 2 |
| 6 | C0538 | NUT 0.75-10 HHGR8 NYLOC | 1 |
| 7 | 0532 | CAP SCR 0.38-16X3.75 HHGR5 | 2 |
| 8 | 5841 | CAP SCR 0.75-10X4.50 HHGR8 | 1 |
| 9 | C6219 | WASHER 0.75 SAE FLAT YELLOW GR8 | 2 |
| 10 | 0867 | MACHY WASHER 1.00ID 14GA | 2 |
| 11 | 39844CR | BUSHING V HOOK SS ZC | 1 |
| 12 | 5753 | PIN 0.19X1.56 LYNCH | 2 |
| 13 | 26762 | HOOK 7 TON SWIVEL CROSBY 1028632 | 1 |
| 14 | 13436 | PIN .38X4.00 QUICK RELEASE | 1 |
| 15 | 26761 | WIRE ROPE .50 6X19 IWRC-XIP 120FT | 1 |
| REV. D | | | |

NOTE:
HARDWARE KIT: 97639

Wireless Remote Replacement Parts



Wireless Remote Replacement Parts List

| WIRELESS REMOTE REPLACEMENT PARTS | | |
|-----------------------------------|--------|--------------------------------------|
| ITEM | PART | DESCRIPTION |
| 1 | 113574 | SEALING BOOT TGL SWITCH HALF HEX M12 |
| 2 | 113560 | FACEPLATE ASM MECH G6 PG |
| 3 | 113561 | TOGGLE SWITCH M-0-M G6 PG |
| 4 | 125676 | DUST CAP M12 MALE W/RBR LEASH G6 PG |
| 5 | 113555 | TRIGGER ASM G6 PG |
| 6 | 125677 | SCREW M4 X 20MM PAN HD TORX A4 SS |
| 7 | 125675 | DUST CAP M12 MALE W/RBR LEASH G6 PG |
| 8 | 113552 | BATTERY RECHRG AA NIMH |
| 9 | 113558 | BATTERY COVER G6 PG |
| 10 | 113557 | HANDLE ASM G6 PG |
| 11 | 125678 | SCREW M4 X 10MM SHCS BLK STL |
| 12 | 113554 | GUARD FRAME G6 PG |
| 13 | 113556 | SHROUD ASM G6 PG |
| 14 | 113579 | ANTENNA 2.4GHZ TNC 80MM FLEX BLUE |



Subject to Change without Notification.
© 2025 Stellar Industries, Inc.