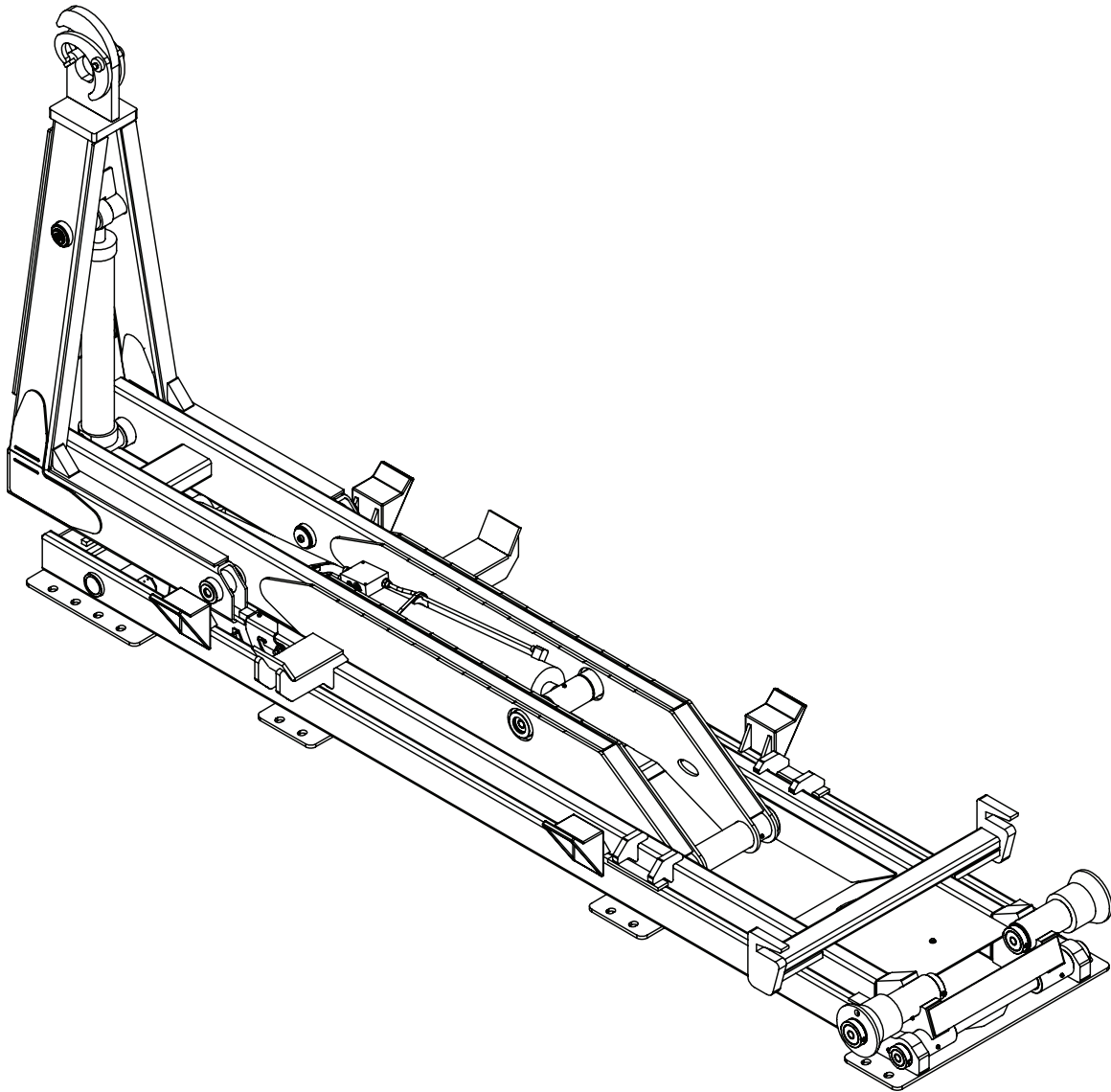




# 138-18-32 Shuttle Hooklift Owner's Manual

Installation • Assembly Drawings • Parts



**Stellar Industries, Inc.**  
190 State Street  
PO Box 169  
Garner, IA 50438  
800-321-3741  
Fax: 641-923-2811

[www.stellarindustries.com](http://www.stellarindustries.com)

Subject to Change without Notification.  
© 2022 Stellar Industries, Inc.

Rev 2  
PN 26569



# Table of Contents

---

|   |           |
|---|-----------|
| Introduction  | iv        |
| Hooklift Nomenclature                               | v         |
| Serial Tag Location                                 | vi        |
| <b>Chapter 1 - Specifications</b>                   | <b>1</b>  |
| Model 138-18-32 Shuttle Specifications              | 1         |
| Acceptable Subframe Dimensions - Model 138-18-32    | 2         |
| <b>Chapter 2 - Installation</b>                     | <b>3</b>  |
| General Installation                                | 3         |
| Installer Notice                                    | 3         |
| Torque Data Chart                                   | 4         |
| Installation Note                                   | 5         |
| Step 1: Set the hooklift onto the truck frame       | 5         |
| Step 2: Drill mounting holes                        | 6         |
| Step 3: Install bumper                              | 7         |
| Step 4: Install tie-downs                           | 7         |
| Step 5: Install taper tower (If applicable)         | 8         |
| Step 6: Install hydraulic reservoir and valve bank  | 8         |
| Reservoir Assembly with Cable Controls - PN 86463   | 9         |
| Reservoir Assembly with Air Controls - PN 86467     | 10        |
| Reservoir Subassembly - PN 86006                    | 11        |
| Valve Bank Parts Drawing                            | 12        |
| Step 7: Install PTO and pump                        | 13        |
| Face Seal/O-Ring Size Chart                         | 14        |
| Step 8: Route hydraulic hoses                       | 14        |
| Hose Kit - PN 98020                                 | 15        |
| Power Beyond VDM8 Valve                             | 16        |
| Step 9: Route Electrical Components                 | 17        |
| Step 10: Install cab and PTO controls               | 18        |
| Cable Controls                                      | 18        |
| Air Controls  | 19        |
| Step 11: Install Hoist Up Alarm - PN 83115          | 20        |
| Step 12: Install mud flaps and fenders              | 21        |
| Poly Tandem Fender Assembly - PN 58217              | 21        |
| Steel Tandem Fender Assembly - PN 100617            | 22        |
| Step 13A: Apply Hooklift Assembly Decals            | 23        |
| Step 13B: Apply Chassis Decals                      | 24        |
| Step 14: Fill reservoir and activate hydraulic flow | 25        |
| Step 15: Operate hooklift                           | 25        |
| Set System Relief Pressure                          | 26        |
| <b>Chapter 3 - Assembly Drawings</b>                | <b>27</b> |
| Base Assembly - PN 90450                            | 27        |
| Plunger Valve Assembly - PN 98018                   | 27        |
| Dump Assembly - PN 92702                            | 28        |
| Secondary Assembly - PN 26388                       | 29        |
| Tilt Assembly - PN 93510                            | 30        |
| Main Cylinder - PN 44340                            | 31        |
| Tilt Cylinder Assembly - PN 23456                   | 32        |
| Optional Tab Alarm Kit - PN 43120                   | 33        |
| Optional Tab Alarm Wire Harness - PN 26291          | 34        |
| Optional Proximity Switch Wire Harness - PN 26416   | 35        |
| Optional Fender Kit - PN 115695                     | 36        |
| Optional Fender Kit - PN 115695 cont.               | 37        |
| Optional Threshold Plate Kit - PN 118281            | 38        |

# Introduction

A copy of this manual is provided with every hooklift and can be found in the hard plastic manual case that is installed on the chassis. A copy of this manual shall remain with the hooklift at all times.

Throughout the manual, three signal words will be used to bring attention to important items:

## **NOTICE**

A NOTICE signal word indicates a practice not related to physical injury.

## **WARNING**

A WARNING signal word indicates a hazardous situation which, if not avoided, could result in death or serious injury.

## **DANGER**

A DANGER signal word indicates a hazardous situation which, if not avoided, will result in death or serious injury.

Information contained within this manual does not cover operation, maintenance, or troubleshooting. Please refer to the General Shuttle Hooklift Manual for details on these items.

This manual is not binding. Stellar Industries, Inc. reserves the right to change, at any time, any or all of the items, components, and parts deemed necessary for product improvement or commercial/production purposes. This right is kept with no requirement or obligation for immediate mandatory updating of this manual.

In closing:

If more information is required or technical assistance is needed, or if you feel that any part of this manual is unclear or incorrect, please contact the Stellar Customer Service Department by phone at 800-321-3741 or email at [service@stellarindustries.com](mailto:service@stellarindustries.com).

**For Technical Questions, Information, Parts, or Warranty, Call Toll-Free at  
800-321-3741**

Hours: Monday - Friday, 8:00 a.m. - 5:00 p.m. CST

Or email at the following addresses:

**Technical Questions, and Information**

[service@stellarindustries.com](mailto:service@stellarindustries.com)

**Order Parts**

[parts@stellarindustries.com](mailto:parts@stellarindustries.com)

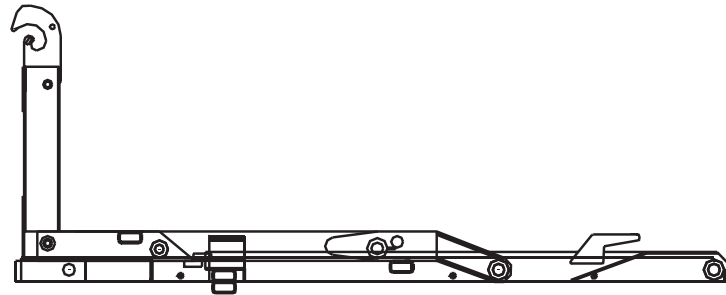
**Warranty Information**

[warranty@stellarindustries.com](mailto:warranty@stellarindustries.com)

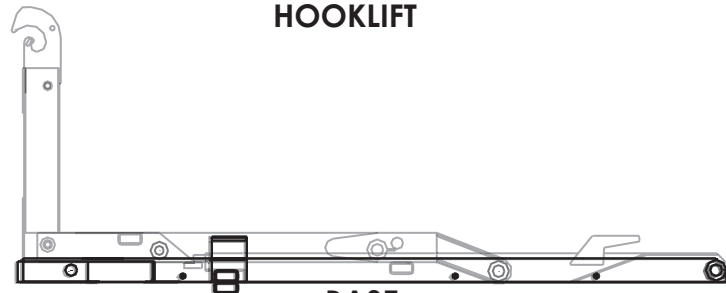
# Hooklift Nomenclature

The Stellar® Shuttle is a hydraulic, body-loading device when mounted on a truck chassis. It can handle a multitude of bodies ranging from flatbeds to recycling containers and dump bodies.

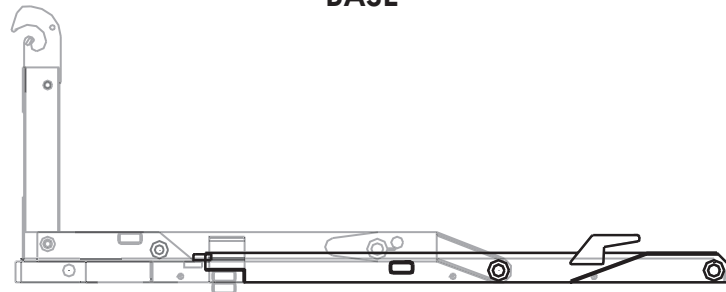
The Shuttle consists of four basic parts: the base, dump, secondary, and tilt sections. Please take the time to familiarize yourself with the various components. Knowing the proper terminology is necessary to get the full benefit of this manual.



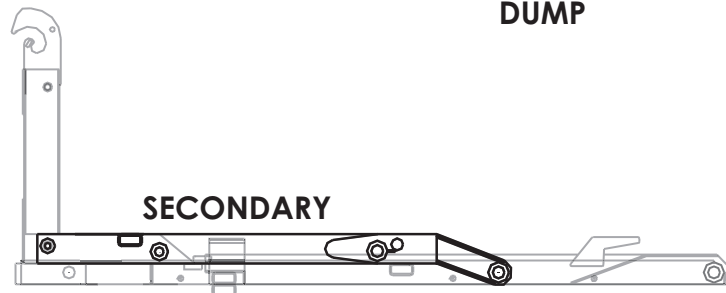
**HOOKLIFT**



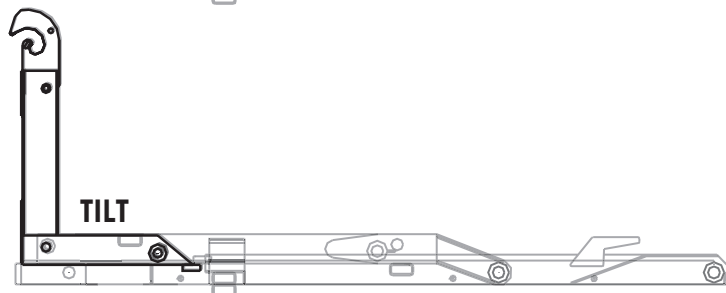
**BASE**



**DUMP**



**SECONDARY**



**TILT**

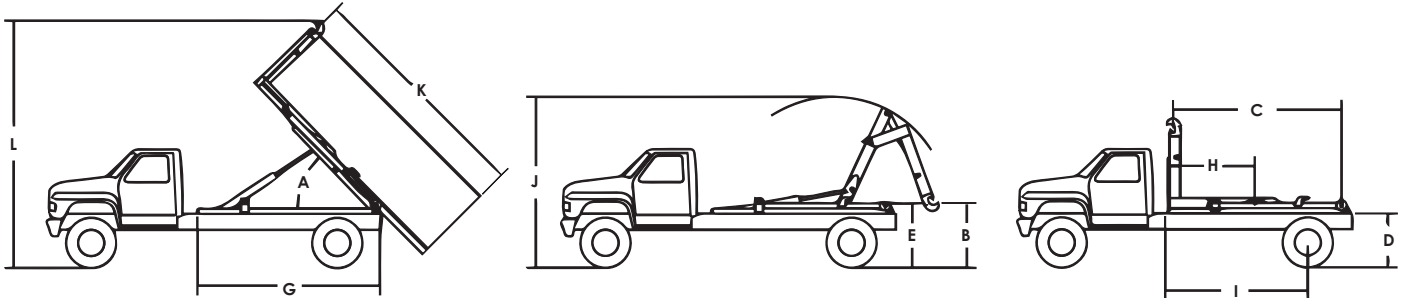
# Serial Tag Location

The serial tag should be located on the right side (passenger side) of the base assembly:



# Chapter 1 - Specifications

## Model 138-18-32 Shuttle Specifications

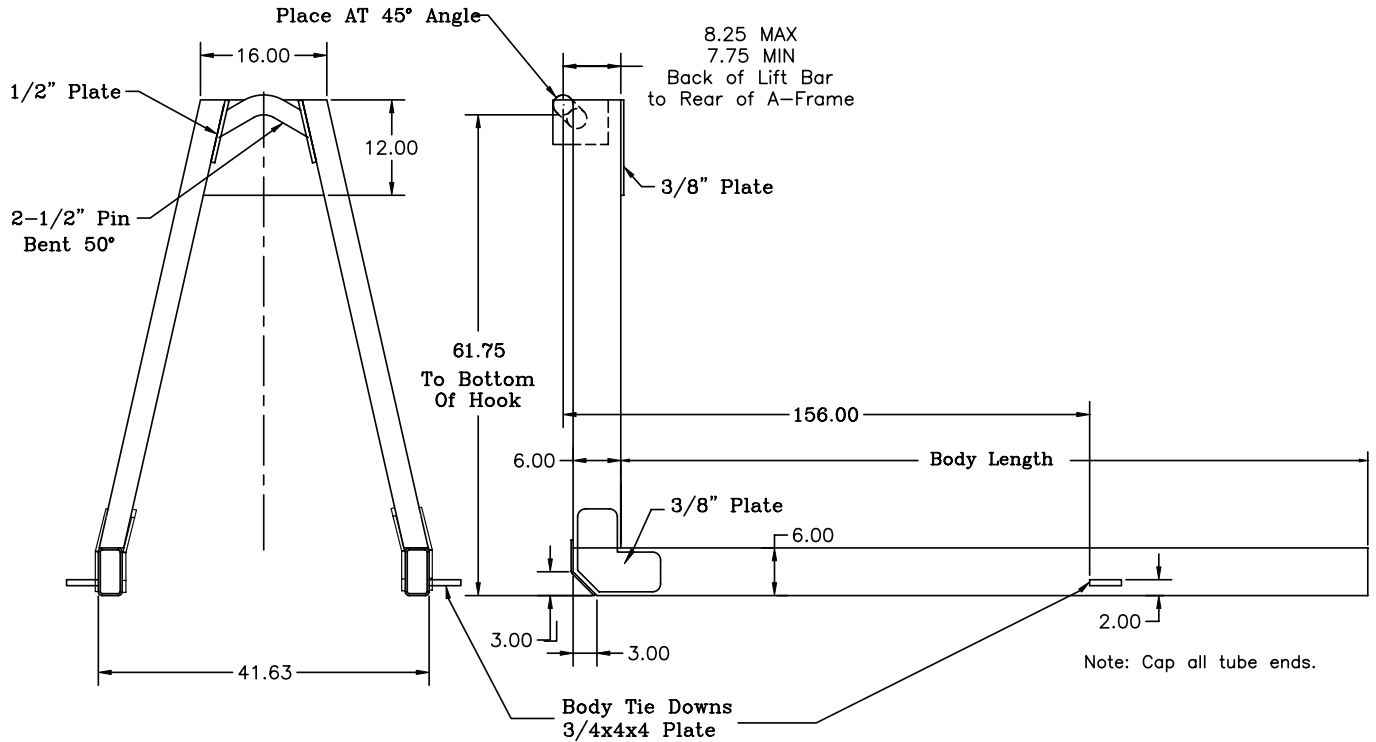


| Model 138-18-32 Shuttle |                                    |                               |
|-------------------------|------------------------------------|-------------------------------|
|                         | Lifting/Dumping Capacity           | 32,000 lb (14,515 kg)         |
| <b>A</b>                | Dump Angle                         | 50°                           |
| <b>B</b>                | Lowest hook Height                 | 51" (129.5 cm)                |
| <b>C</b>                | Effective Length                   | 176" (447 cm)                 |
| <b>D</b>                | Truck Frame Height                 | 41" (104 cm)                  |
| <b>E</b>                | Hooklift Height                    | 52.31" (132.87 cm)            |
| <b>G</b>                | Hooklift Length                    | 188" (478 cm)                 |
| <b>H</b>                | Hooklift Center of Gravity         | 81" (206 cm)                  |
| <b>I</b>                | Chassis Cab to Axle                | 150" to 158" (381 to 401 cm)  |
| <b>J</b>                | Max Height When Loading            | 171" (434 cm)                 |
| <b>K</b>                | Longest Body to Dump               | 234" (594 cm)                 |
| <b>L</b>                | Max Height when Dumping            | 235" (597 cm)                 |
|                         | Operating Pressure                 | 4200 psi                      |
|                         | Hydraulic Flow                     | Not to exceed 24 GPM          |
|                         | Shipping Weight                    | 3,900 lb (1,769 kg)           |
|                         | Hook Height                        | 61.75" (156.85 cm)            |
|                         | Shipping Dimensions (LxHxW)        | 188" x 83" x 49"              |
|                         | Minimum Truck GVWR                 | 32,000 lb (14,515 kg)         |
|                         | RBM                                | 1,600,000                     |
|                         | Load Angle w/Shortest Body Length  | 35°                           |
|                         | Recommended Body Lengths*          | 15' to 17.5' (4.57 to 5.33 m) |
|                         | Recommended Flatbed Body Lengths** | to 19.5' (5.94 m)             |

\* Assumes 3ft. overhang from center of rear roller pin.

\*\* Assumes 5ft. overhang from center of rear roller pin - May require bumper and latch options.

# Acceptable Subframe Dimensions - Model 138-18-32



| Minimum recommended rail construction<br>per number of rear rollers on loader. |                     |                     |
|--|---------------------|---------------------|
|  | Single              | Double              |
| 168-20-20  | 6x2x1/4             | 6x2x1/4             |
| 158-18-32  | 6x2x1/4 & 1/2x2 Plt | 6x2x1/4             |
| 138-18-32  | 6x2x1/4 & 1/2x2 Plt | 6x2x1/4             |
| 138-18-40  | 6x3x3/8 & 1/2x3 Plt | 6x3x3/8 & 1/2x3 Plt |
| 138-18-52  | 6x3x3/8 & 1/2x3 Plt | 6x3x3/8 & 1/2x3 Plt |
| 138-18-65  | 6x3x3/8 & 1/2x3 Plt | 6x3x3/8 & 1/2x3 Plt |
| Slider26   | 6x3x3/8 & 1/2x3 Plt | 6x3x3/8 & 1/2x3 Plt |
| Slider40   | 6x3x3/8 & 1/2x3 Plt | 6x3x3/8 & 1/2x3 Plt |



# Chapter 2 - Installation

## General Installation

This chapter is designed to serve as a general guide for the installation of a Stellar® Shuttle 138-18-32 Hooklift. Each installation is considered unique so certain portions of this chapter may or may not apply to your direct application. If a question should arise during the installation process, please contact Stellar Customer Service at (800) 321 3741.

PTO and Pump installation instructions are provided by the corresponding manufacturers. For more information on which PTO and Pump fit your application, please contact your local Stellar Distributor or Stellar Customer Service.

**⚠ WARNING** Do not install this hooklift on a chassis not capable of handling the loads imposed on it. Failure to do so may result in serious injury or death.

**NOTICE** Do not weld or drill holes into the side wall of the base tubes.

### Hooklift Mounting and Assembly

Study names and locations of the parts and familiarize yourself with the hooklift before starting the assembly. Reading the step-by-step instructions that follow will be helpful.

#### Assembly

Select an area for assembly that will be large enough to accommodate the completed unit. The surface of the work area should be as level as possible. Use the proper hand tools to ensure proper bolt tightness. Refer to the torque data chart in this chapter for the recommended torque values for different sizes of bolts.

#### Model Number

Know the model number of the Stellar® Hooklift being mounted. Use this model number whenever referring to the assembly or parts listing pages. The number is stamped on the name plate which is located on the front frame member.

## Installer Notice

According to Federal Law (49 cfr part 571), each final-stage manufacturer shall complete the vehicle in such a manner that it conforms to the standards in effect on the date of manufacture of the incomplete vehicle, the date of final completion, or a date between those two dates. This requirement shall, however, be superseded by any conflicting provisions of a standard that applies by its terms to vehicles manufactured in two or more stages.

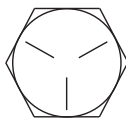
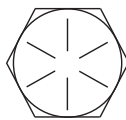
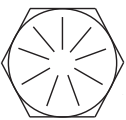
Therefore, the installer of Stellar® Hooklifts is considered one of the manufacturers of the vehicle. As such a manufacturer, the installer is responsible for compliance with all applicable federal and state regulations. They are required to certify that the vehicle is in compliance with the Federal Motor Vehicle Safety Standards and other regulations issued under the National Traffic and Motor Vehicle Safety Act.

Please reference the Code of Federal Regulations, title 49 - Transportation, Volume 5 (400-999), for further information, or visit <http://www.gpoaccess.gov/nara/index.html> for the full text of Code of Federal Regulations.

## Torque Data Chart

When using the torque data in the chart, the following rules should be observed:

- Bolt manufacturer's particular specifications should be consulted when provided.
- Flat washers of equal strength must be used.
- All torque measurements are given in foot-pounds. To convert to inch-pounds, multiply by 12.
- Torque values specified are for bolts with residual oils or no special lubricants applied. If special lubricants of high stress ability, such as Never-Seez compound graphite and oil, molybdenum disulphite, colloidal copper or white lead are applied, multiply the torque values in the charts by the factor .90. The use of Loctite does not affect the torque values listed above.
- Torque values for socket-head capscrews are the same as for Grade 8 capscrews.
- Do not use these values if a different torque value or tightening procedure is given for a specific application. Torque values listed are for general use only. Check tightness of fasteners periodically.
- Sheer bolts are designed to fail under predetermined loads. Always replace shear bolts with identical grade.
- Fasteners should be replaced with the same or higher grade. If higher grade fasteners are used, these should only be tightened to the strength of the original.
- Tighten plastic insert or crimped steel-type lock nuts to approximately 110 percent of the dry torque values shown in the chart below, applied to the nut, not to the bolt head. Tighten toothed or serrated-type lock nuts to the full torque value. *Note: "Lubricated" means coated with a lubricant such as engine oil, or fasteners with phosphate and oil coatings. "Dry" means plain or zinc plated without lubrication. Tighten lubricated bolts to approximately 80% of dry bolts.*

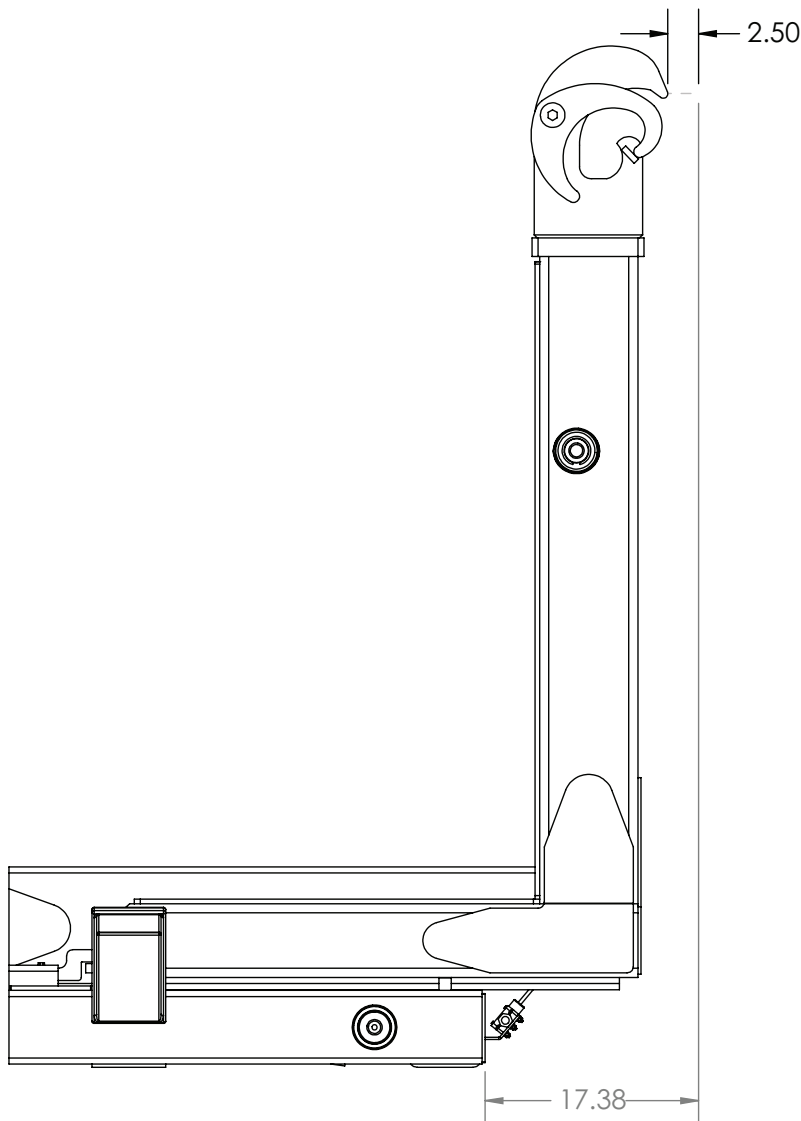
|                |                   | GRADE 5  |                | GRADE 8   |                | GRADE 9   |
|----------------|-------------------|--|----------------|---|----------------|---|
|                |                   |  |                |  |                |  |
| Size (DIA-TPI) | Bolt DIA (Inches) | Plain (Ft-Lb)  | Plated (Ft-Lb) | Plain (Ft-Lb)   | Plated (Ft-Lb) | Plated (Ft-Lb)  |
| 5/16-18        | 0.3125            | 17   | 13             | 25  | 18             | 22  |
| 3/8-16         | 0.3750            | 31   | 23             | 44  | 33             | 39  |
| 7/16-14        | 0.4375            | 49   | 37             | 70  | 52             | 63  |
| 1/2-13         | 0.5000            | 75   | 57             | 105   | 80             | 96  |
| 9/16-12        | 0.5625            | 110  | 82             | 155   | 115            | 139   |
| 5/8-11         | 0.6250            | 150  | 115            | 220   | 160            | 192   |
| 3/4-10         | 0.7500            | 265  | 200            | 375   | 280            | 340   |
| 7/8-9          | 0.8750            | 395  | 295            | 605   | 455            | 549   |
| 1-8            | 1.000             | 590  | 445            | 910   | 680            | 823   |
| 1 1/8-7        | 1.1250            | 795  | 595            | 1290  | 965            | 1167  |
| 1 1/4-7        | 1.2500            | 1120   | 840            | 1815  | 1360           | 1646  |
| 1 3/8-6        | 1.3750            | 1470   | 1100           | 2380  | 1780           | 2158  |
| 1 1/2-6        | 1.500             | 1950   | 1460           | 3160  | 2370           | 2865  |

## Installation Note

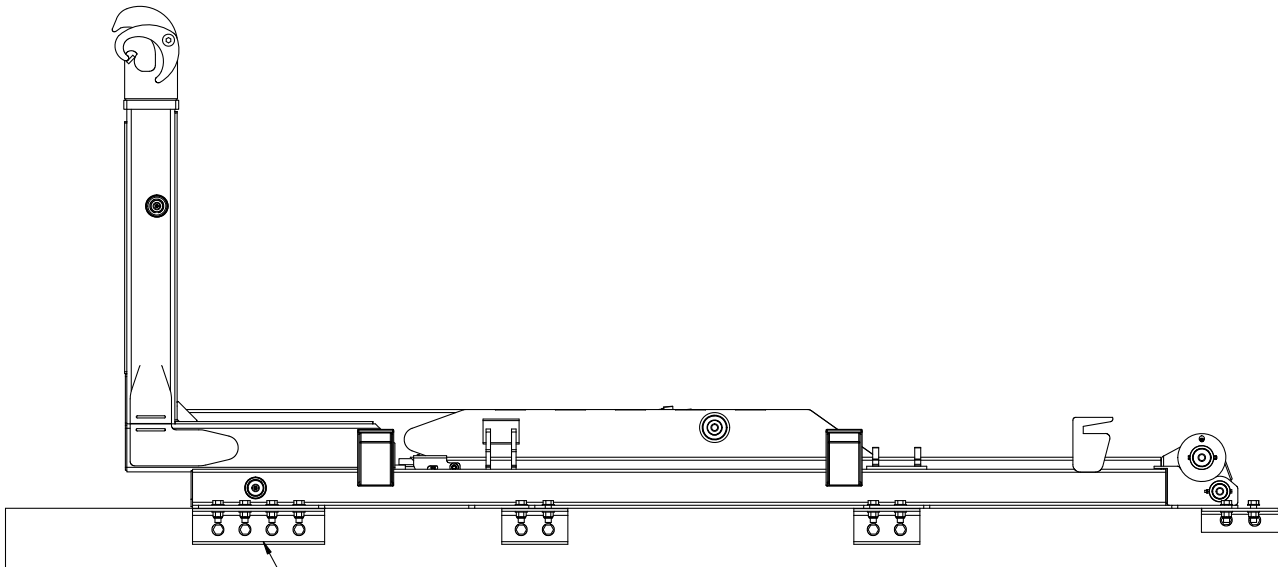
Every hooklift installation is unique. However, certain guidelines exist that apply to every model. Listed below is a general set of chronological steps that may be followed when installing a Stellar Hooklift. If any questions arise during the installation process, feel free to contact your local dealer or Stellar Customer Service at 800-321-3741.

### Step 1: Set the hooklift onto the truck frame.

- Visually inspect the truck and look for any potential issues. For example: Clearance problems, cross members extending too high, insufficient room in front of the hooklift for tarpers, exhaust manifolds, etc., or insufficient room in the rear to allow for bumper selection. *Note: Stellar Industries recommends allowing 12" behind the start of clear truck frame for installation of a tarping system.*
- Be sure to square the hooklift on the truck frame to allow for proper measurement. The front of the hooklift needs to be at least 2.50" behind the cab or any equipment mounted behind the cab.



## Step 2: Drill mounting holes.



NOTE: FOR THE FRONT MOUNT FOUR BOLTS ARE REQUIRED FOR MOUNTING THE ANGLE TO THE HOOKLIFT BASE MOUNT AND FOUR BOLTS TO MOUNT THE ANGLE TO THE TRUCK FRAME.

NOTE:

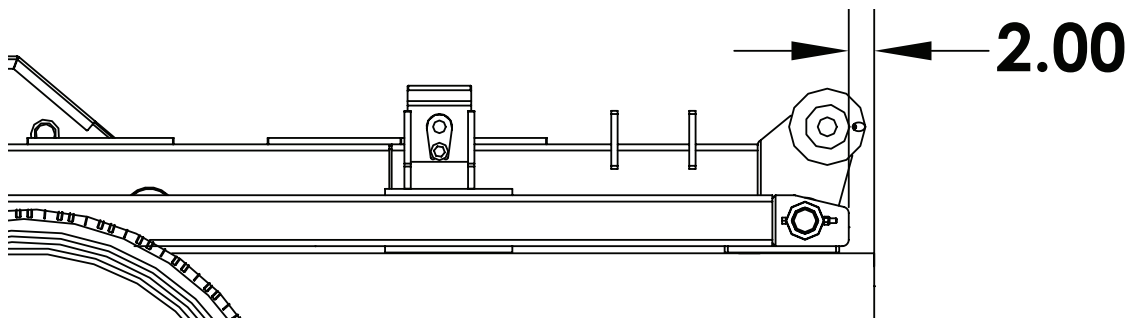
1. MULTIPLE HOLES ARE PREDRILLED ON THE BASE MOUNTING FLATS, ADDITIONAL HOLES MAY NOT BE ADDED.
2. ONLY THE FRONT ANGLE MOUNT REQUIRES 4 BOLTS TO INSTALL THE ANGLE MOUNT TO THE TRUCK FRAME AND 4 BOLTS TO INSTALL THE HOOK TO THE ANGLE MOUNT.
3. THE REAR 3 ANGLE MOUNTS REQUIRE 2 BOLTS EACH TO INSTALL THE ANGLE MOUNT TO THE TRUCK AND THE HOOKLIFT TO THE ANGLE MOUNT.

- When positioning mounts to frame, tie-down castings are bolted to the underside of each tie down plate located on the outside of the main rails of the base. The tie-down plate closest to the front of the base requires one mount on each side of the pin. This is the only time two tie down castings are required per a single tie-down plate. The tie-down plates are designed with multiple slots to offer more flexibility in mounting locations. Additional holes may not be added to the tie-down plates.

- Using the tie-down castings as a guide, drill 11/16" holes through the truck frame as shown.

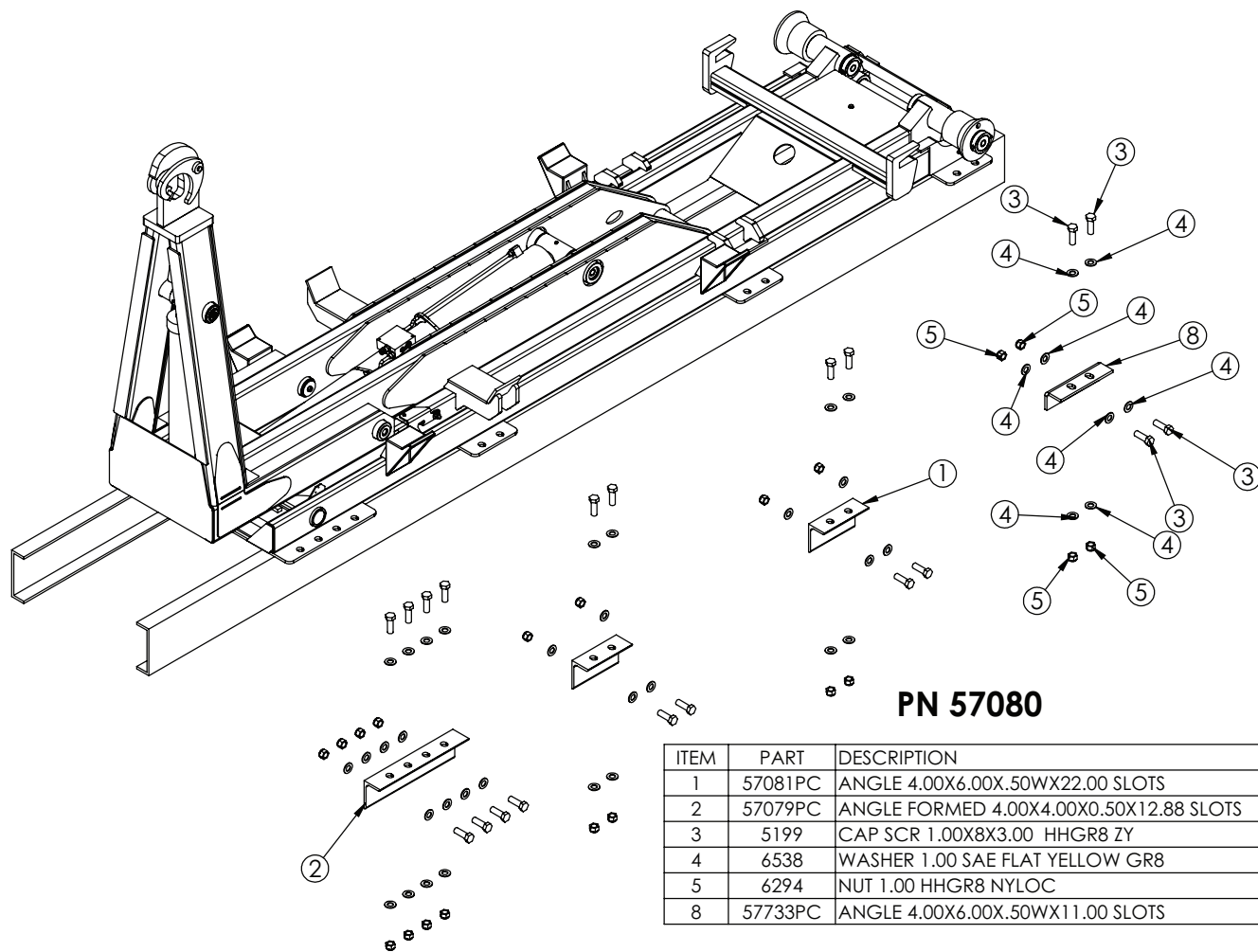
## Step 3: Install bumper.

- See NHTSA (National Highway Truck Safety Administration) Regulations for acceptable placement.
- Modify the truck frame as necessary so that it ends 2" from the rear of the hooklift.



## Step 4: Install tie-downs.

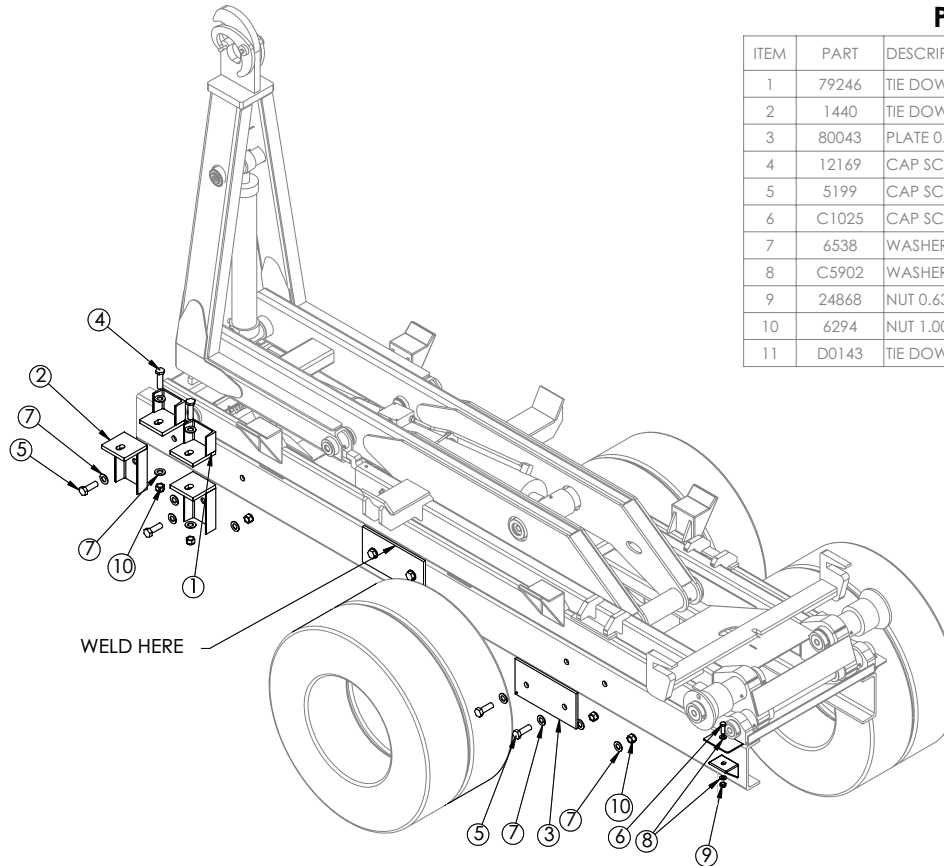
Note: See torque chart at beginning of chapter:



# Mounting Kit - PN 16898

## PN 16898

| ITEM | PART  | DESCRIPTION                     | QTY. |
|------|-------|---------------------------------|------|
| 1    | 79246 | TIE DOWN 40,000# PC BLACK       | 4    |
| 2    | 1440  | TIE DOWN, 40000#                | 4    |
| 3    | 80043 | PLATE 0.50X8.00X16.00 W/HOLE    | 4    |
| 4    | 12169 | CAP SCR 1.00-8X3.50 HHGR8       | 4    |
| 5    | 5199  | CAP SCR 1.00X8X3.00 HHGR8 ZY    | 12   |
| 6    | C1025 | CAP SCR 0.63-11X2.00 HHGR8 ZY   | 4    |
| 7    | 6538  | WASHER 1.00 SAE FLAT YELLOW GR8 | 32   |
| 8    | C5902 | WASHER 0.63 SAE FLAT YELLOW GR8 | 8    |
| 9    | 24868 | NUT 0.63-11 HHGR8 NYLOCK ZY     | 4    |
| 10   | 6294  | NUT 1.00 HHGR8 NYLOC            | 16   |
| 11   | D0143 | TIE DOWN CHANNEL                | 2    |



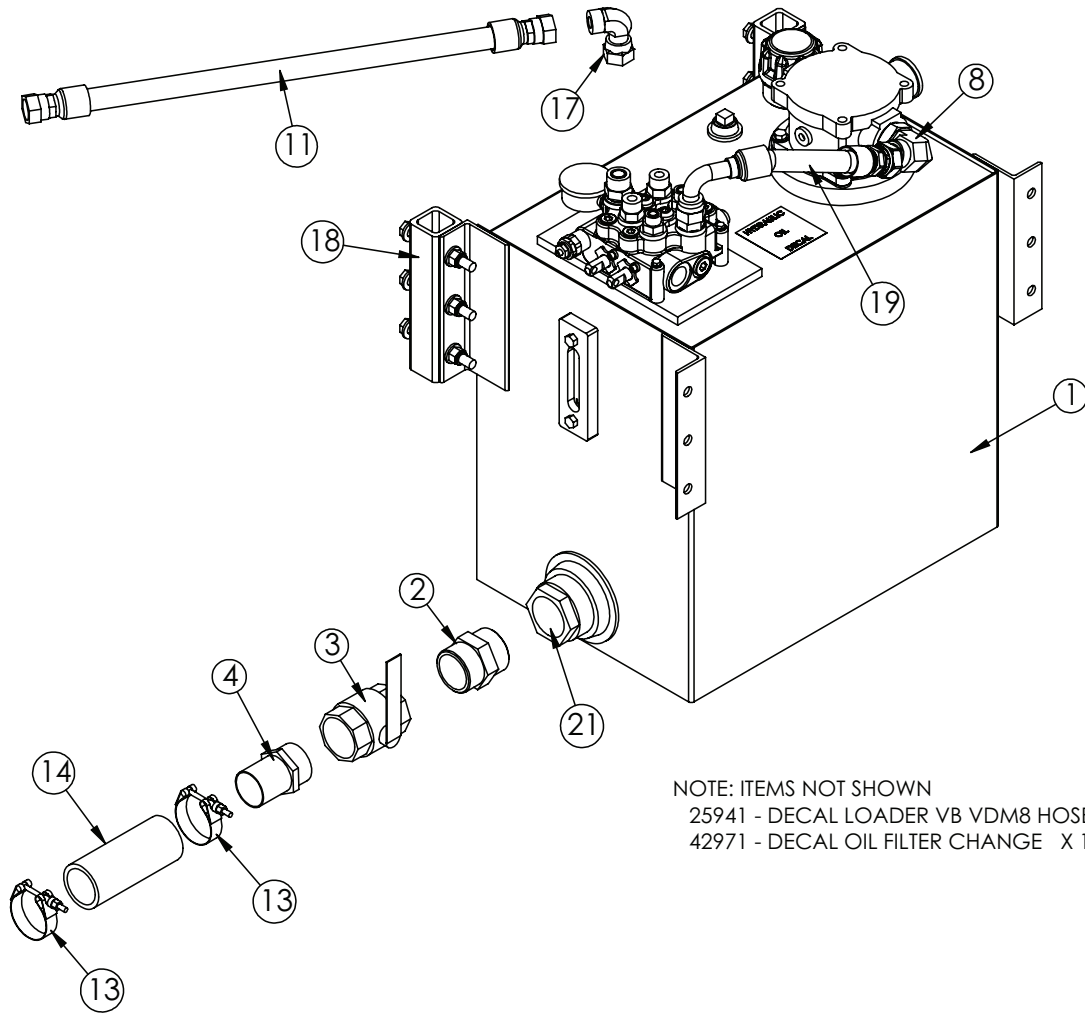
## Step 5: Install taper tower (If applicable).

See brand specific installation instructions.

## Step 6: Install hydraulic reservoir and valve bank.

- Before drilling and bolting to the frame, confirm adequate room for cable routing between in-cab controls and the valve bank. **Note: The top of the reservoir should not be above the truck frame. Refer to the Reservoir Assembly Drawings for details.**

# Reservoir Assembly with Cable Controls - PN 86463

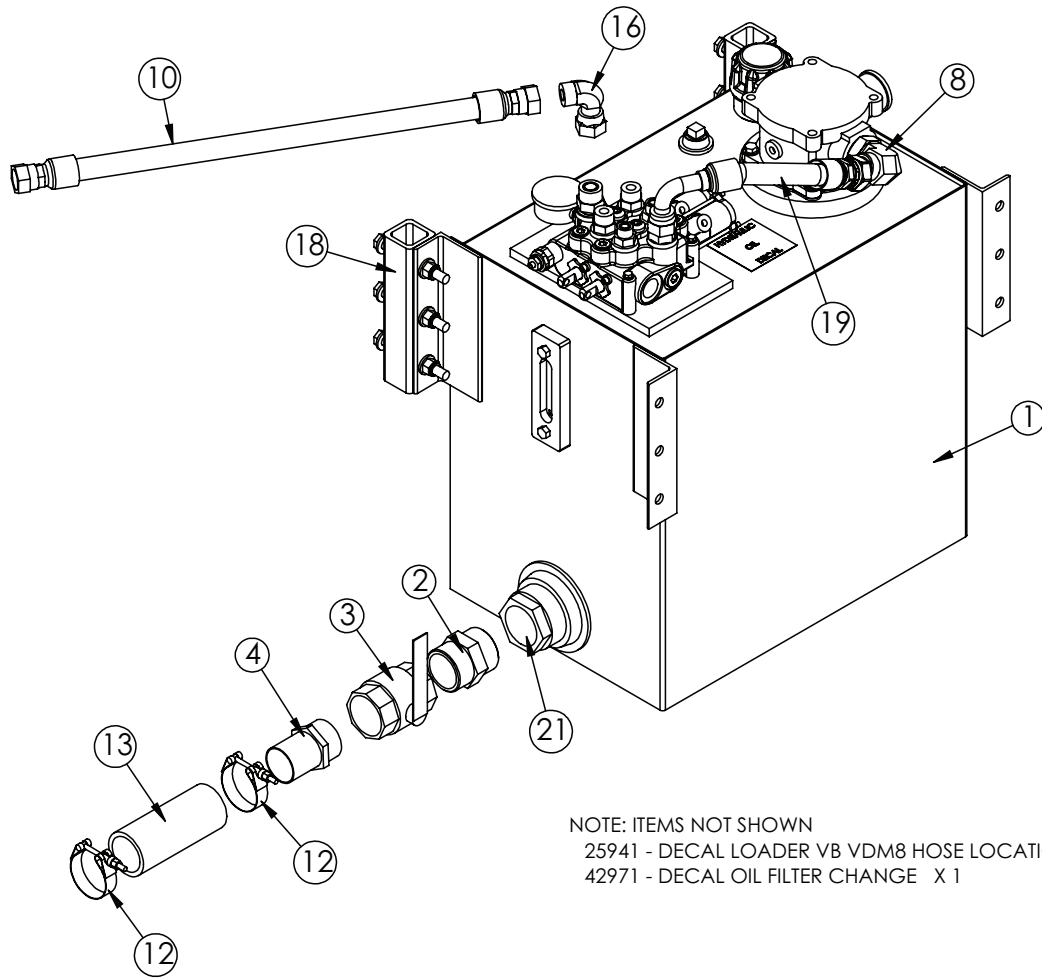


NOTE: ITEMS NOT SHOWN  
 25941 - DECAL LOADER VB VDM8 HOSE LOCATION X 1  
 42971 - DECAL OIL FILTER CHANGE X 1

## PN 86463

| ITEM | PART No. | DESCRIPTION   | QTY. |
|------|----------|---|------|
| 01   | 86006    | RSRVR ASM 25GAL K MODEL W/ TANK TOP FILTER            | 1    |
| 02   | 7353     | FTG 32-32 MP-MP HEX NIPPLE STRAIGHT                   | 1    |
| 03   | C4750    | VALVE BALL 2.00                                       | 1    |
| 04   | C4730    | FTG 32-32 MP-HB STRAIGHT                              | 1    |
| 05   | 24611    | VB 2-SECTION VDM8                                     | 1    |
| 06   | 0521     | WASHER 0.25 LOCK                                      | 3    |
| 07   | 0339     | CAP SCR 0.25-20X2.50 HHGR5                            | 3    |
| 08   | 60395    | FTG 16-20 MFS-MAORB 90                                | 1    |
| 09   | C2252    | FTG 8-10 MFS-MORB STRAIGHT                            | 2    |
| 10   | 16152    | FTG 10-10 MFS-MORB STRAIGHT                           | 2    |
| 11   | 27119    | HOSE 0.75(78C-12-JC-JC-12-12-120)                     | 1    |
| 12   | 10094    | GAUGE OIL LF 2.5" 0-5000 BM                           | 1    |
| 13   | C4819    | HOSE CLAMP 2.00                                       | 2    |
| 14   | 17766    | HOSE SUCT 2.00 10FT                                   | 1    |
| 15   | 25630    | FTG 10-4 MORB-FP STRAIGHT                             | 1    |
| 16   | D1435    | FTG 12-10 MFS-MORB STRAIGHT                           | 1    |
| 17   | C4903    | FTG 12-12 MFS-FFSS 90                                 | 1    |
| 18   | 83959    | MNT KIT RSRVR 25G                                     | 1    |
| 19   | 86168    | HOSE 0.75(300PSI)-16FFSS SHORT-12FFSS 90 SHORT-7.75CL | 1    |
| 20   | C2142    | FTG 12-12 MFS-MORB STRAIGHT                           | 1    |
| 21   | C6327    | FILTER STRAINER 35GAL TF-2030                         | 1    |

# Reservoir Assembly with Air Controls - PN 86467



NOTE: ITEMS NOT SHOWN  
 25941 - DECAL LOADER VB VDM8 HOSE LOCATION X 1  
 42971 - DECAL OIL FILTER CHANGE X 1

## PN 86467

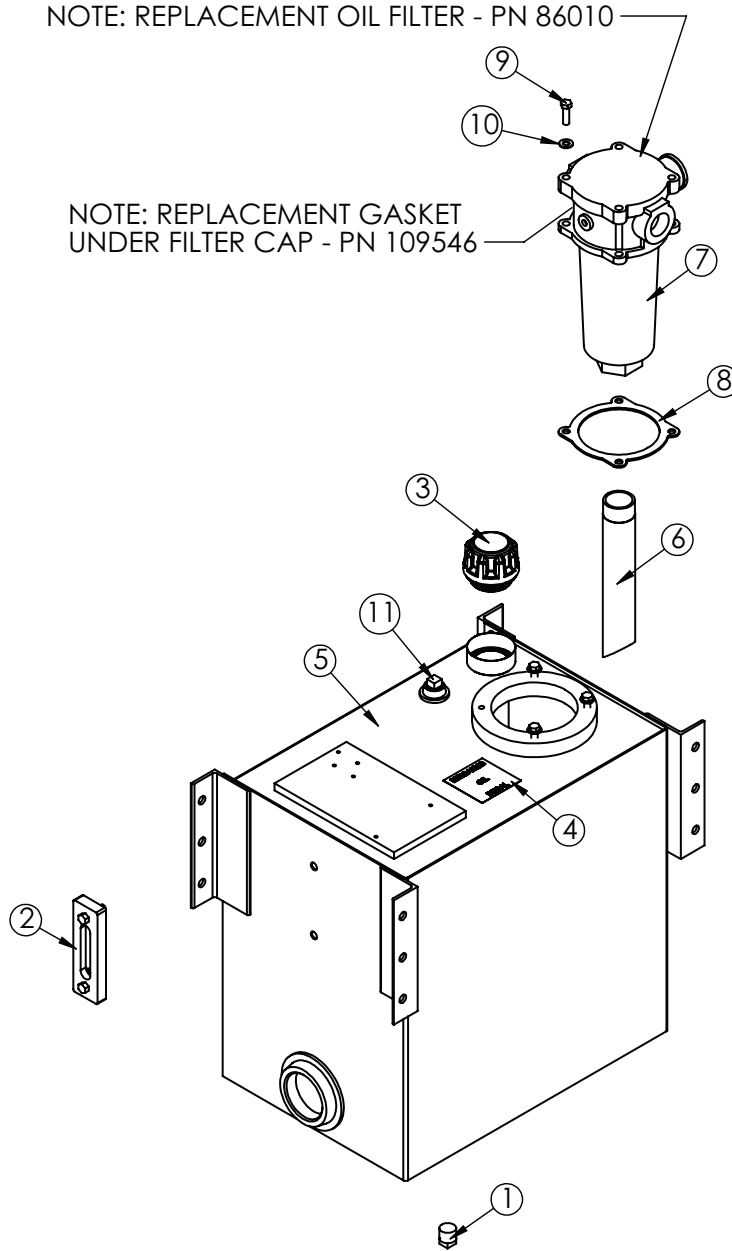
| ITEM | PART No. | DESCRIPTION   | QTY. |
|------|----------|---|------|
| 01   | 86006    | RSVR ASM 25GAL K MODEL W/ TANK TOP FILTER             | 1    |
| 02   | 7353     | FTG 32-32 MP-MP HEX NIPPLE STRAIGHT                   | 1    |
| 03   | C4750    | VALVE BALL 2.00                                       | 1    |
| 04   | C4730    | FTG 32-32 MP-HB STRAIGHT                              | 1    |
| 05   | 25940    | VB 2-SECTION VDM8 W/AIR ACTUATORS                     | 1    |
| 06   | 0521     | WASHER 0.25 LOCK                                      | 3    |
| 07   | 0339     | CAP SCR 0.25-20X2.50 HHGR5                            | 3    |
| 08   | 60395    | FTG 16-20 MFS-MAORB 90                                | 1    |
| 09   | C2252    | FTG 8-10 MFS-MORB STRAIGHT                            | 2    |
| 10   | 27119    | HOSE 0.75(78C-12-JC-JC-12-12-12-120)                  | 1    |
| 11   | 10094    | GAUGE OIL LF 2.5" 0-5000 BM                           | 1    |
| 12   | C4819    | HOSE CLAMP 2.00                                       | 2    |
| 13   | 17766    | HOSE SUCT 2.00 10FT                                   | 1    |
| 14   | 25630    | FTG 10-4 MORB-FP STRAIGHT                             | 1    |
| 15   | d1435    | FTG 12-10 MFS-MORB STRAIGHT                           | 1    |
| 16   | C4903    | FTG 12-12 MFS-FFSS 90                                 | 1    |
| 17   | 16152    | FTG 10-10 MFS-MORB STRAIGHT                           | 2    |
| 18   | 83959    | MNT KIT RSVR 25G                                      | 1    |
| 19   | 86168    | HOSE 0.75(300PSI)-16FFSS SHORT-12FFSS 90 SHORT-7.75CL | 1    |
| 20   | C2142    | FTG 12-12 MFS-MORB STRAIGHT                           | 1    |
| 21   | C6327    | FILTER STRAINER 35GAL TF-2030                         | 1    |



## Reservoir Subassembly - PN 86006

NOTE: REPLACEMENT OIL FILTER - PN 86010

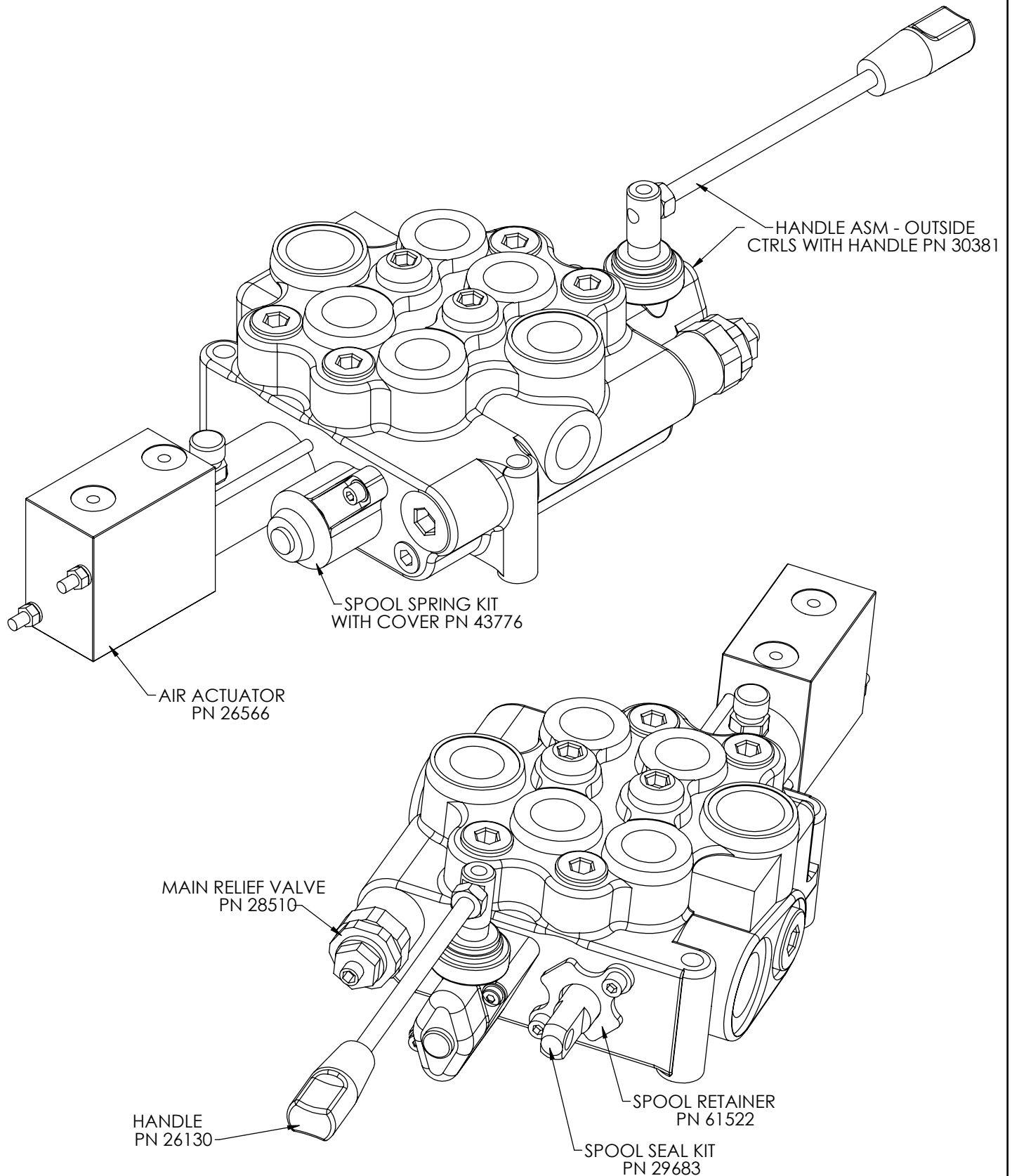
NOTE: REPLACEMENT GASKET UNDER FILTER CAP - PN 109546



### PN 86006

| ITEM | PART  | DESCRIPTION                            | QTY |
|------|-------|--|-----|
| 1    | C2126 | MAGNETIC PLUG DRAIN 3/4"               | 1   |
| 2    | 15463 | THERMO SIGHT GAUGE ZINGA SG-O5-A-T-N   | 1   |
| 3    | 73278 | CAP FILL 1PSI ZINGA THREADED           | 1   |
| 4    | 13002 | DECAL HYD OIL SPECIFICATION MOBIL      | 1   |
| 5    | 86007 | RSRVR 25GAL K MODEL W/ TANK TOP FILTER | 1   |
| 6    | 66656 | FILTER PIPE TANK TOP                   | 1   |
| 7    | 85928 | FILTER TANK TOP 20 FORB                | 1   |
| 8    | 58396 | GASKET RG-11 TANK TOP FILTER           | 1   |
| 9    | 0335  | CAP SCR 0.38-16X1.25 HHGR5             | 4   |
| 10   | C6353 | WASHER 0.38 SAE FLAT YELLOW GR8        | 4   |
| 11   | C4845 | PLUG 0.75 NPT SQ HD BLK                | 1   |

# Valve Bank Parts Drawing



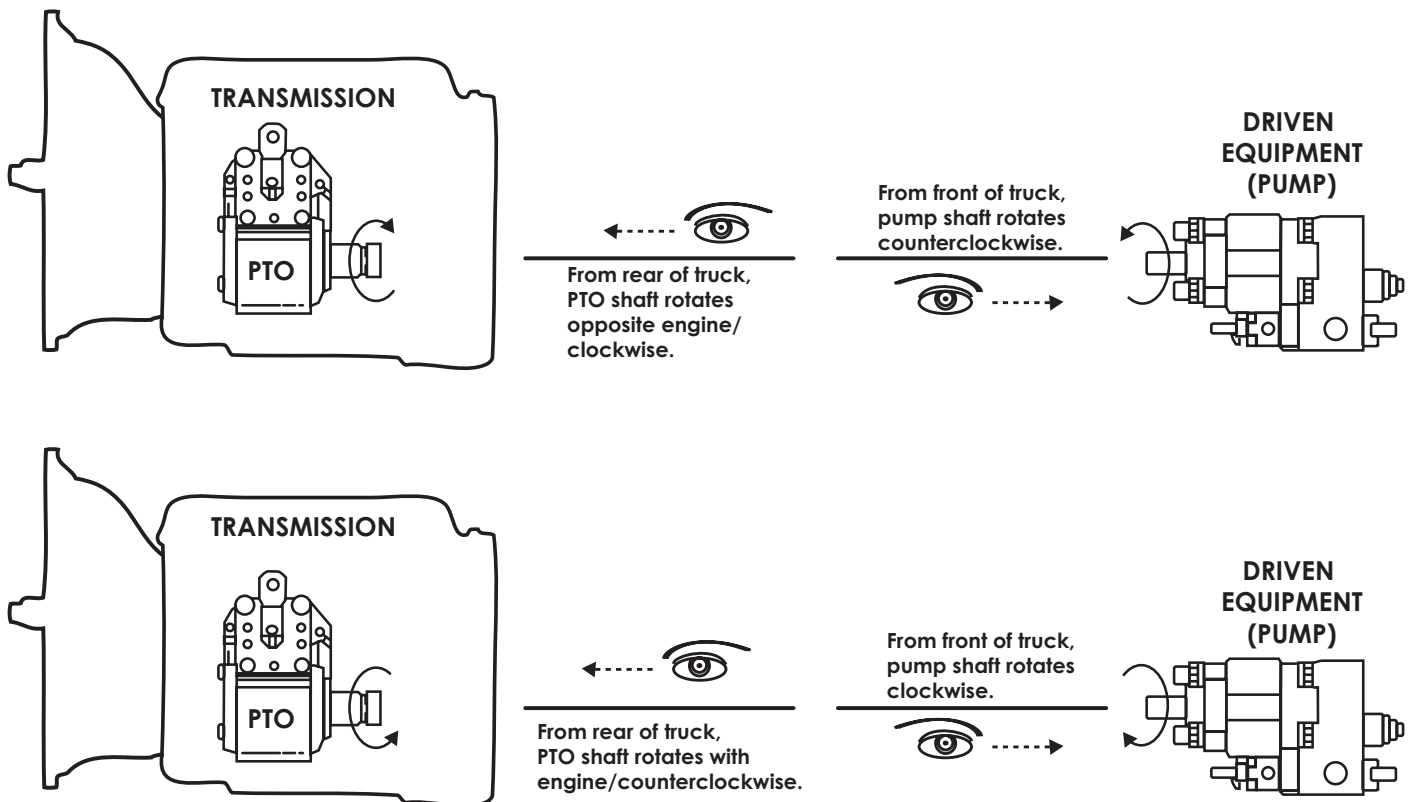
## Step 7: Install PTO and pump.

- Before installing the pump to the PTO, always check the direction of the PTO output shaft to determine which direction the hydraulic pump needs to rotate to operate the equipment. If this is not determined prior to installing the hydraulic pump, the hydraulic pump may rotate in the incorrect direction and damage the front shaft seal.

### PTO Direction of Rotation Tip:

Viewed by standing at the rear of the vehicle, looking forward at the PTO shaft, with the PTO shaft pointing toward the rear of the vehicle:

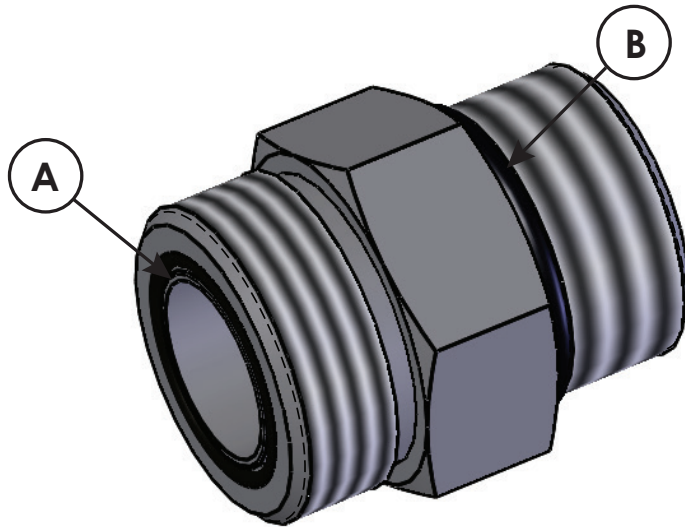
| P.T.O.  | Driven Equipment  |
|---|---|
| Rotates Opposite Engine<br>(looks "clockwise")    | Driven equipment must rotate counterclockwise (also called left-hand rotation, "A" for anti-clockwise or C.C.W. for counter clockwise). |
| Rotates With Engine<br>(looks "counterclockwise") | Driven equipment must rotate clockwise (also called right-hand rotation or "C" for clockwise).  |



*Remember that the PTO is specified by looking from the rear of the truck to the front of the truck. The driven equipment (pump) is specified by looking from the front of the truck to the rear of the truck.*

- Use the brand specific PTO/Pump installation instructions. If the directions are not quite clear, contact Stellar® Customer Service or consult with a hydraulic specialty house or company prior to installation.

## Face Seal/O-Ring Size Chart



| Hose Size | Fitting Size | Face Seal (A)<br>Stellar® PN | O-ring Boss (B)<br>Stellar® PN |
|-----------|--------------|------------------------------|--------------------------------|
| 1/4"      | #4           | C2027                        | D1245                          |
| 3/8"      | #6           | C2028                        | D1246                          |
| 1/2"      | #8           | C2029                        | D1247                          |
| 5/8"      | #10          | 32223                        | D1248                          |
| 3/4"      | #12          | D1244                        | D1249                          |
| 1"        | #16          |                              | D1250                          |

### Step 8: Route hydraulic hoses.

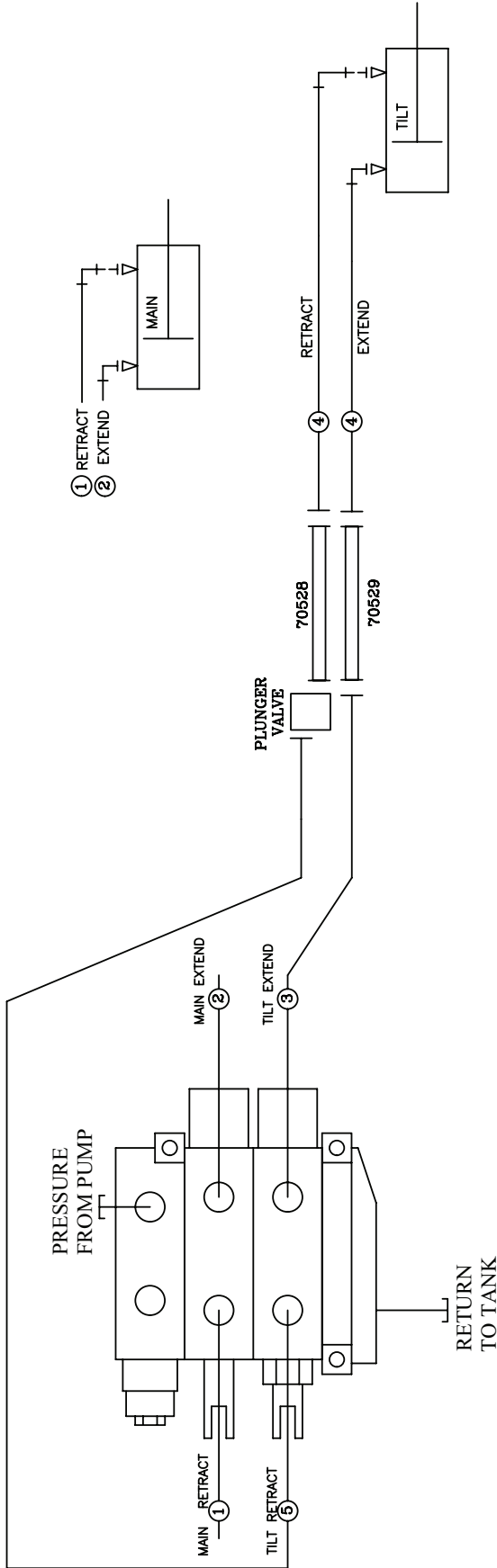
1. Route hose line from the reservoir to the pump (See hose kit drawing for details).
2. Route hose line from the pump to the valve bank (See hose kit drawing for details).
3. Route hose line from the valve bank to the reservoir (See hose kit drawing for details).
4. Route hose line from the valve bank and the hooklift (See hose kit drawing for details).

*Note: If using the Power Beyond feature for additional function, see "Power Beyond VDM8 Valve" later in this chapter for further details.*

#### Notes on hose line routing:

- Protect these lines with hose wrap when necessary.
- Keep these lines away from sharp edges.
- Keep these lines away from the exhaust or other temperature extreme items.
- Keep these lines away from the driveshaft or other moving items.

# Hose Kit - PN 98020



- ① RETRACT
- ② EXTEND

NOTE: SYSTEM PRESSURE IS 4500 P.S.I.

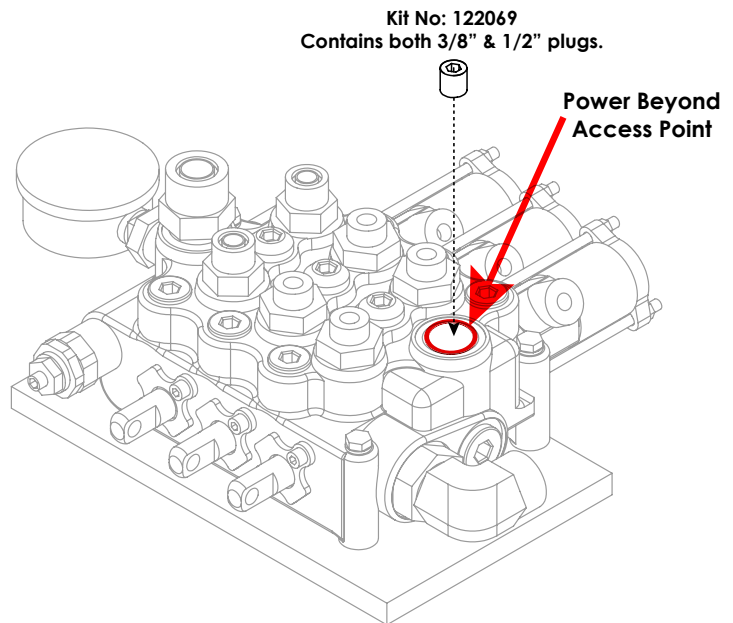
| ITEM | PART No. | DESCRIPTION                                    | QTY |
|------|----------|--|-----|
| 05   | 95600    | HOSE 0.50(4500PSI)-8FFSS-8FFSS 90 LONG-90CL    | 1   |
| 04   | 98024    | HOSE 0.50(4500PSI)-8MFS-8MBX90-238CL           | 2   |
| 03   | 95458    | HOSE 0.50(4500PSI)-8MFS-8FFSS 90 SHORT-90CL    | 1   |
| 02   | 41125    | HOSE 0.63(4500PSI)-10FFSS-10FFSS 90 SHORT-96CL | 1   |
| 01   | 41124    | HOSE 0.63(4500PSI)-10FFSS-10FFSS 90 LONG-96CL  | 1   |

|   |   |
|---|---|
| <p>STELLAR #41124- 0.63(4500PSI)-10FFSS-10FFSS 90 LONG-96CL<br/>QTY - 1</p> <p>FUNCTION: MAIN CYLINDER TO VB (MAIN RETRACT) ①</p> | <p>STELLAR #95458- 0.50(4500PSI)-8MFS-8FFSS 90 SHORT-90CL<br/>QTY - 1</p> <p>FUNCTION: PORT TUBE TO VB (TILT EXTEND) ③</p>            |
| <p>STELLAR #41125- 0.63(4500PSI)-10FFSS-10FFSS 90 SHORT-96CL<br/>QTY - 1</p> <p>FUNCTION: MAIN CYLINDER TO VB (MAIN EXTEND) ②</p> | <p>STELLAR #95600- 0.50(4500PSI)-8FFSS SHORT-8FFSS 90 LONG-90CL<br/>QTY - 1</p> <p>FUNCTION: PLUNGER VALVE TO VB (TILT RETRACT) ⑤</p> |
| <p>STELLAR #98024- 0.50(4500PSI)-8MFS-8MBX90-238CL<br/>QTY - 2</p> <p>FUNCTION: PORT TUBES TO TILT CYLINDER ④</p>                 |   |

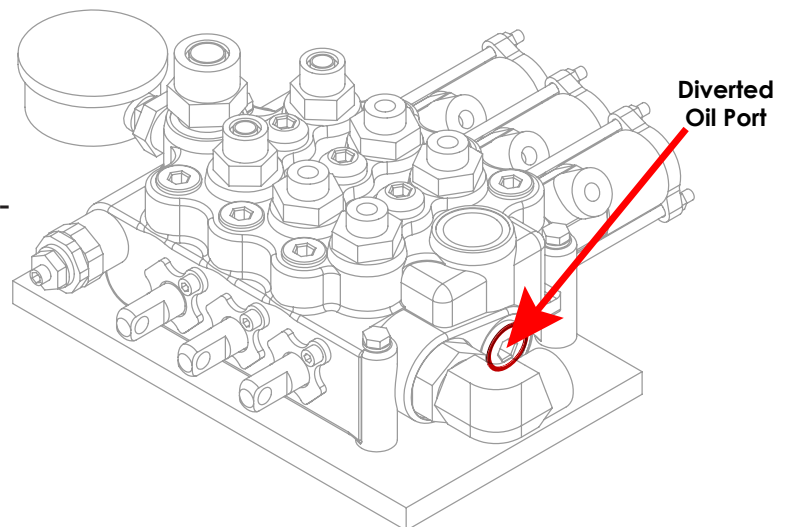
## Power Beyond VDM8 Valve

These instructions are intended for correct installation of power beyond on a Salami VDM8 valve bank. If any hydraulic component is integrated after this valve the power beyond must be installed correctly, or serious damage may incur to the hydraulic system.

1. Remove cover / access plug to reveal the power beyond access point. Can also be used as the Return / Tank port.
2. Install one (either 1/2" or 3/8") plug from kit number:122069 into lower portion of cavity to activate the power beyond feature. Use thread sealer. (Tape sealers not recommended.)



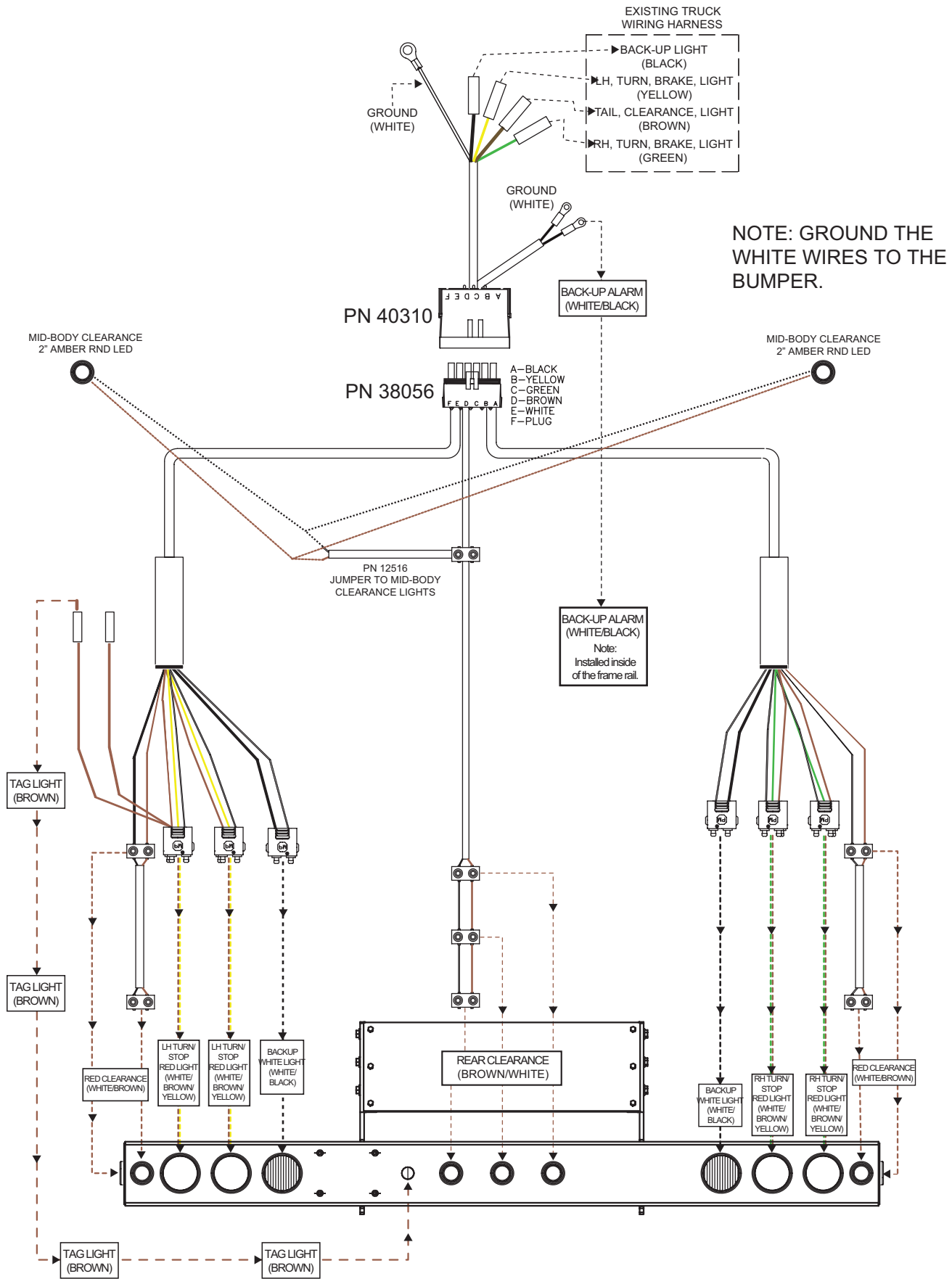
3. The Power Beyond feature is now activated and will divert oil to alternate system via the port shown.



### NOTES:

- THE RETURN / TANK LINE MUST BE CONNECTED TO THE TOP OR THE SIDE PORT, LABELED "T".
- USING THE RETURN LINE TO RUN AUXILIARY EQUIPMENT WILL DIRECTLY RESULT IN A FAILURE, AND WILL NOT IN ANY CIRCUMSTANCE, BE COVERED UNDER WARRANTY.
- A STANDARD STELLAR® HOOKLIFT WILL HAVE 6 HYDRAULIC LINES ATTACHED TO THE VALVE. WITH POWER BEYOND ACTIVATED, THEY WILL HAVE 7 HYDRAULIC LINES ATTACHED TO THE VALVE.

# Step 9: Route Electrical Components



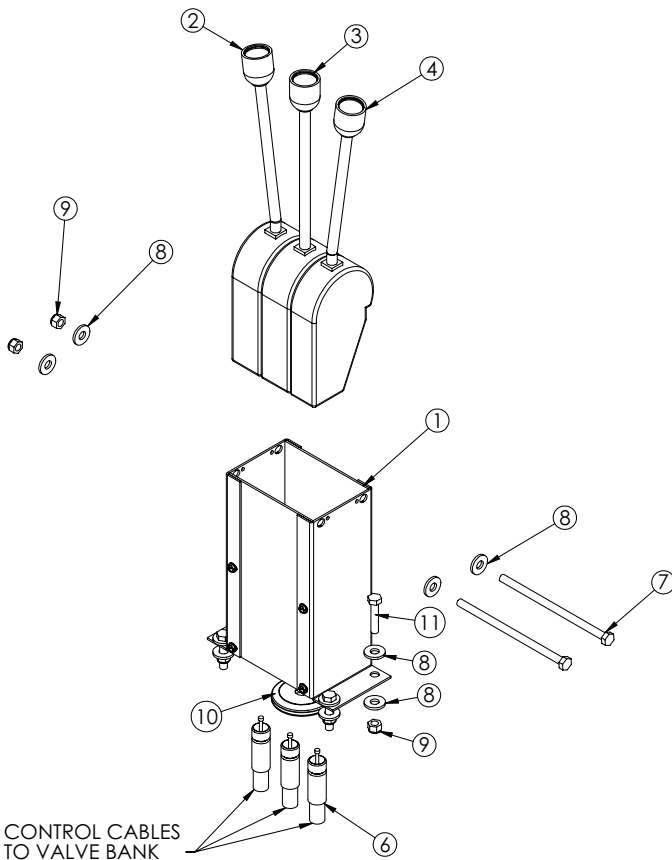
# Step 10: Install cab and PTO controls.

- Use PTO brand specific installation instructions.
- For cab controls, see controller assembly drawing for details:

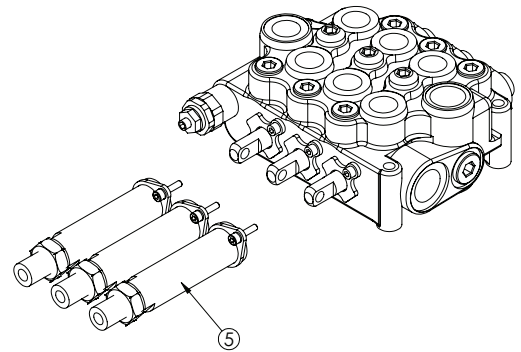
## Cable Controls

|                 | 2 SECTION | 3 SECTION |
|-----------------|-----------|-----------|
| <b>96 INCH</b>  | PN 50835  | PN 50836  |
| <b>144 INCH</b> | PN 53444  | PN 53445  |
| <b>192 INCH</b> | PN 50837  | PN 50838  |

In Cab Installation



At Valve Installation

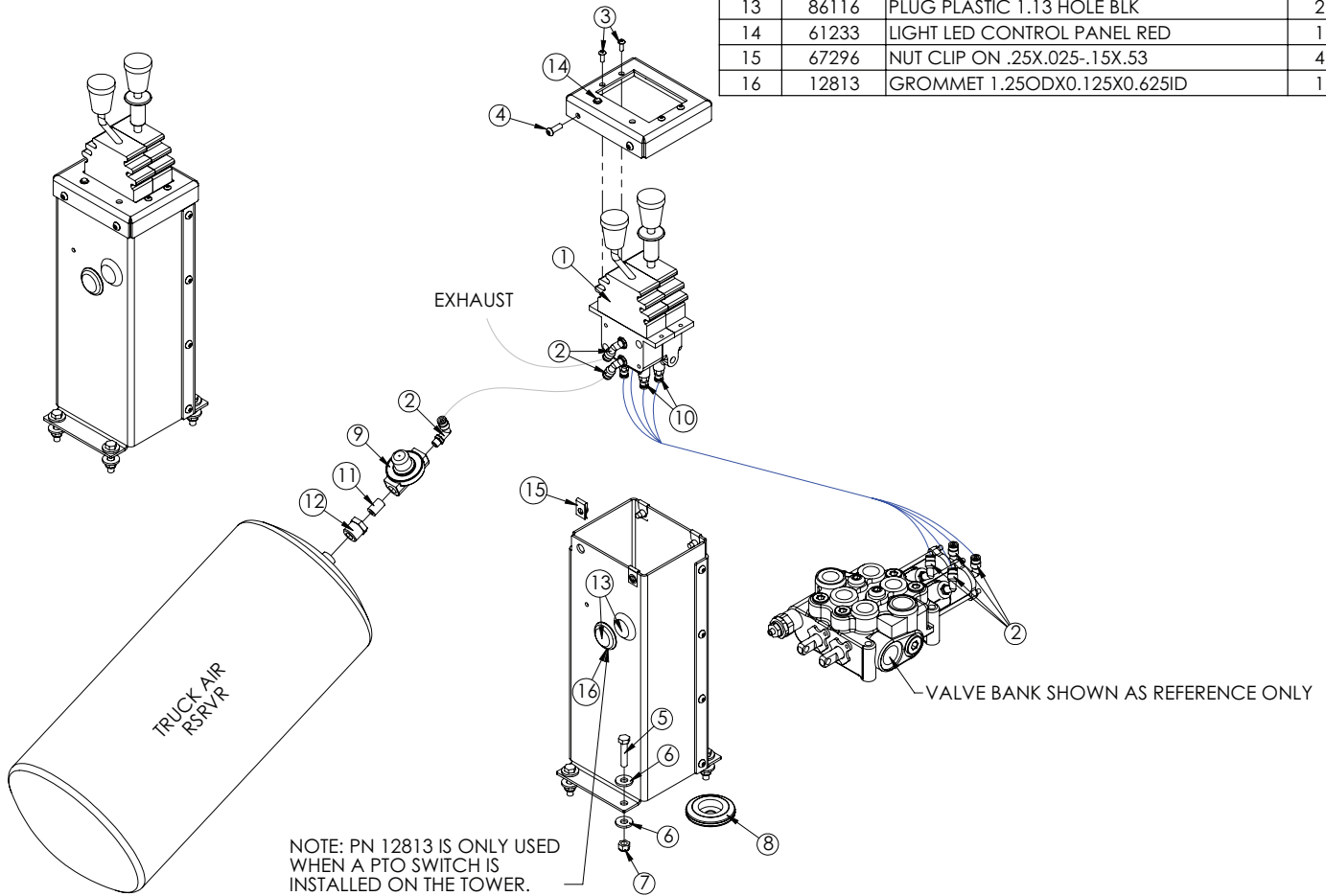


| ITEM | PART  | DESCRIPTION                   | QTY. |
|------|-------|-------------------------------|------|
| 1    | 38351 | VALVE CTRL CONSOLE 3LEVER RVC | 1    |
| 2    | 37475 | CTRL CNTR LOCK LEFT BEND      | 1    |
| 3    | 37476 | CTRL CNTR LOCK NO BEND        | 1    |
| 4    | 37474 | CTRL CNTR LOCK RIGHT BEND     | 1    |
| 5    | 37469 | CABLE CONN. KIT FOR VD8A/VDM8 | 3    |
| 6    | 37471 | CONTROL CABLE 96 IN WESCON    | 3    |
| 7    | 20057 | CAP SCR 0.31-18X6.50 HHGR5    | 2    |
| 8    | 0343  | WASHER 0.31 USS FLAT          | 12   |
| 9    | 0342  | NUT 0.31-18 HHGR5 NYLOC       | 6    |
| 10   | 16948 | GROMMET 2.50ODX0.125X0.25ID   | 1    |
| 11   | 0486  | CAP SCR 0.31-18X1.50 HHGR5    | 4    |



# Air Controls

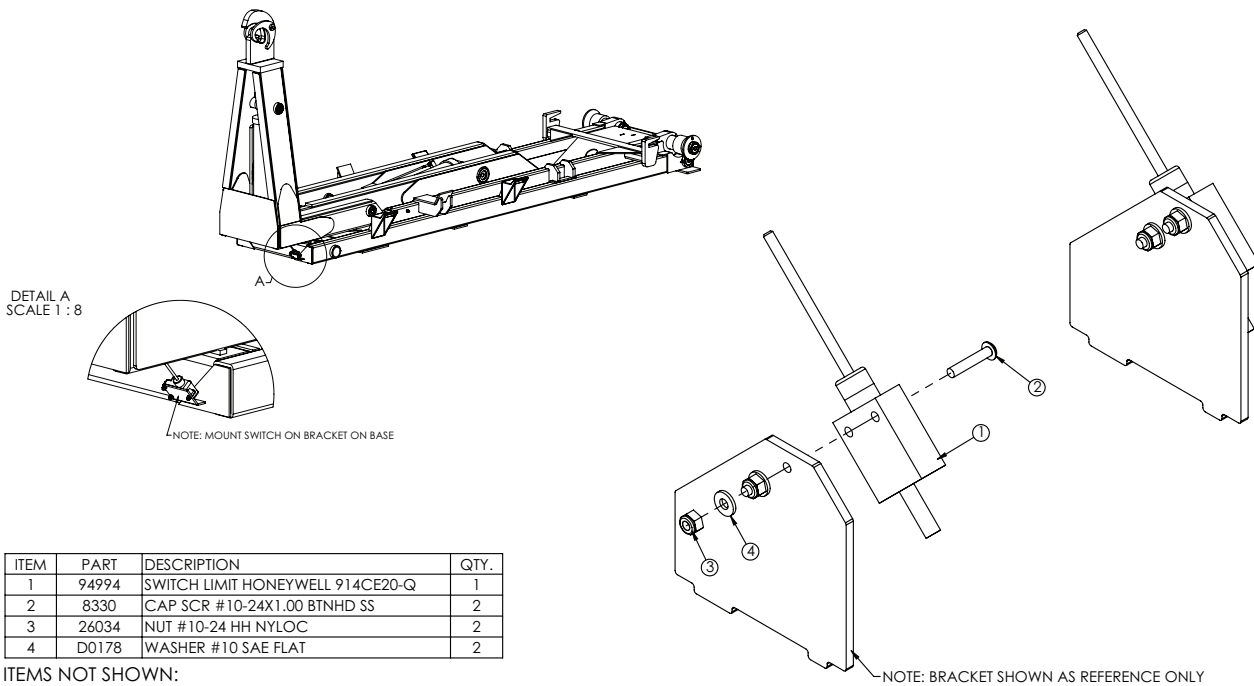
| ITEM | PART  | DESCRIPTION                             | QTY. |
|------|-------|---|------|
| 1    | 41988 | CTRL 2 BANK 4WAY AIR CNTR LOCK          | 1    |
| 2    | 45687 | FTG 4-2 MP-PTC 90 BRASS 1169X4S         | 7    |
| 3    | D1711 | CAP SCR #10-24X0.50 BTNHD SS            | 4    |
| 4    | C6021 | CAP SCR 0.25-20X0.75 BTNHD SS           | 4    |
| 5    | 0486  | CAP SCR 0.31-18X1.50 HHGR5              | 4    |
| 6    | 0343  | WASHER 0.31 USS FLAT                    | 8    |
| 7    | 0342  | NUT 0.31-18 HHGR5 NYLOC                 | 4    |
| 8    | 16948 | GROMMET 2.50ODX0.125X0.25ID             | 1    |
| 9    | 35211 | PTO AIR REGULATOR 378414                | 1    |
| 10   | 45333 | FTG 4-2 PC DOT-MP STRAIGHT              | 4    |
| 11   | C5934 | FTG 4-4XCLOSE MP-MP NIPPLE STRAIGHT BLK | 1    |
| 12   | C1065 | BUSHING 0.50X0.25 BLK                   | 1    |
| 13   | 86116 | PLUG PLASTIC 1.13 HOLE BLK              | 2    |
| 14   | 61233 | LIGHT LED CONTROL PANEL RED             | 1    |
| 15   | 67296 | NUT CLIP ON .25X.025-.15X.53            | 4    |
| 16   | 12813 | GROMMET 1.25ODX0.125X0.625ID            | 1    |



NOTE: PN 12813 IS ONLY USED WHEN A PTO SWITCH IS INSTALLED ON THE TOWER.

# Step 11: Install Hoist Up Alarm - PN 83115

Install the hoist up alarm onto the base of the hooklift as shown:

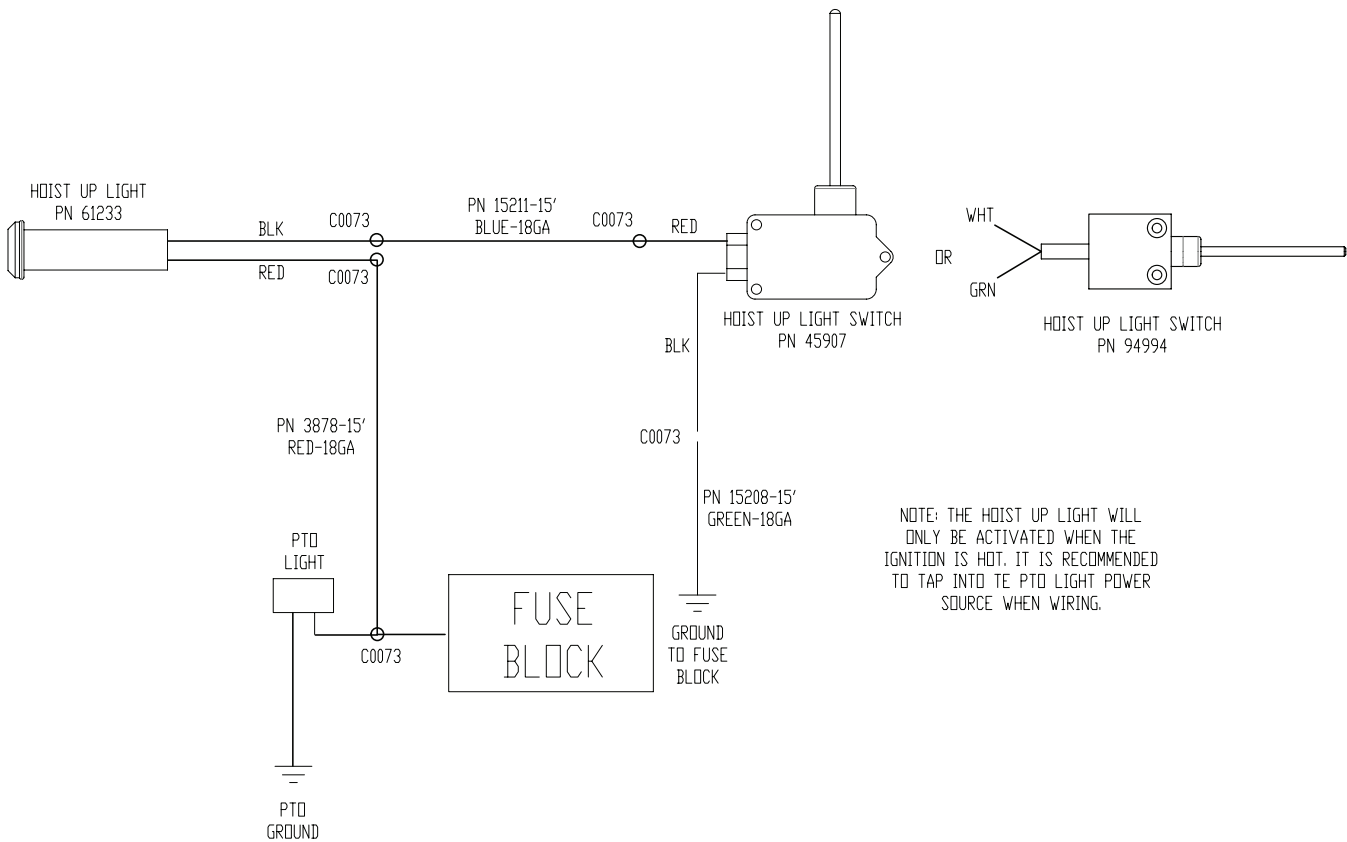


| ITEM | PART  | DESCRIPTION                      | QTY. |
|------|-------|----------------------------------|------|
| 1    | 94994 | SWITCH LIMIT HONEYWELL 914CE20-Q | 1    |
| 2    | 8330  | CAP SCR #10-24X1.00 BTNHD SS     | 2    |
| 3    | 26034 | NUT #10-24 HH NYLOC              | 2    |
| 4    | D0178 | WASHER #10 SAE FLAT              | 2    |

**ITEMS NOT SHOWN:**

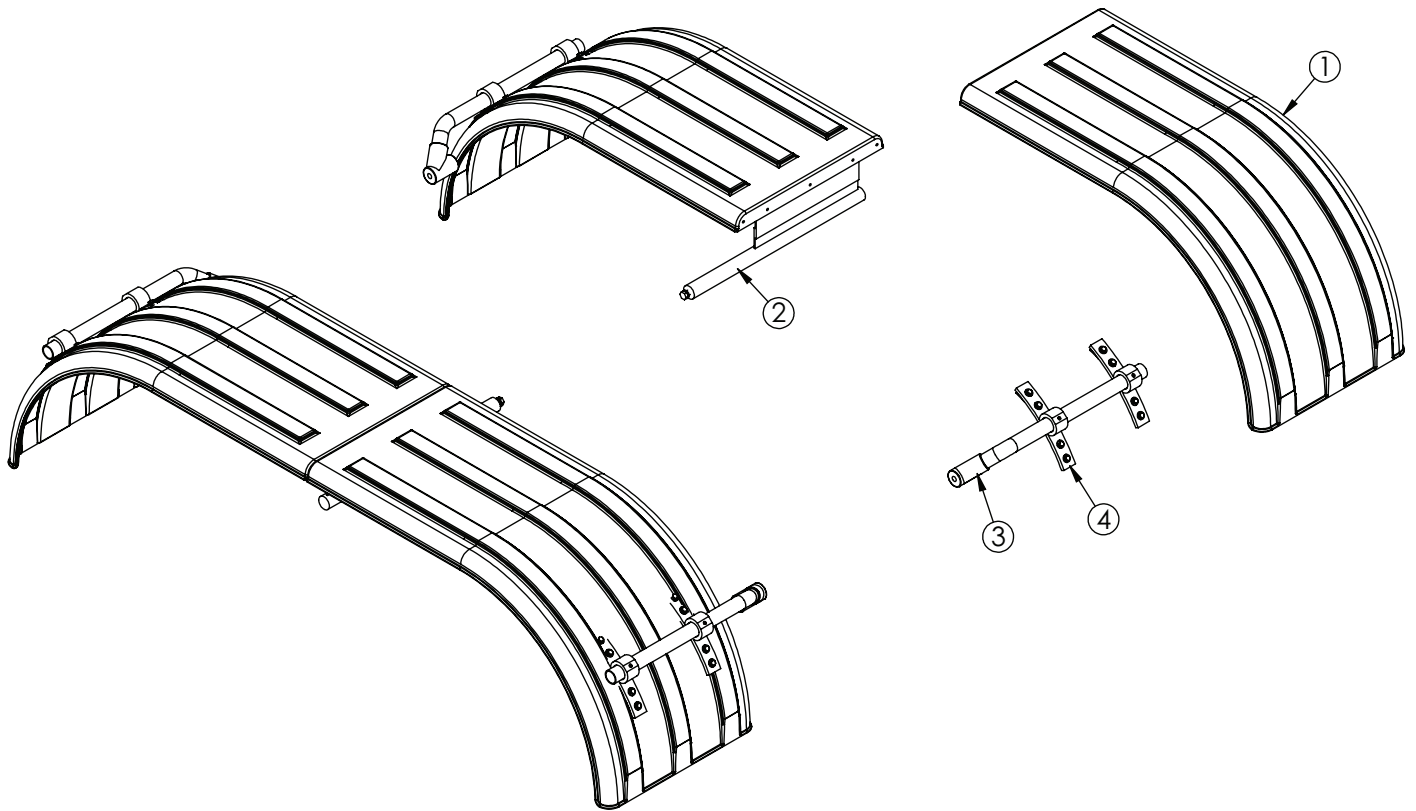
- C0073 - TERML 16-14 BUTT WATER TIGHT X 5
- 3878 - WIRE 18GA (RM) RED (PRIMARY) SAE J-1128 X 15FT
- 15211 - WIRE 18GA (RM) BLUE SAE J-1128 X 15FT
- 15208 - WIRE 18GA (RM) GREEN SAE J-1128 X 15FT
- 61233 - LIGHT LED CONTROL PANEL RED X 1
- 88324 - ELEC SCHEM CONTROL TOWER X 1

**NOTE:**  
INSTALL DUMP UP LIGHT (PN 61233) IN CONTROL TOWER IF AIR CONTROLS AND IN DASH ON STREET SIDE OF STEERING WHEEL IF CABLE OR ELECTRIC CONTROLS.



# Step 12: Install mud flaps and fenders.

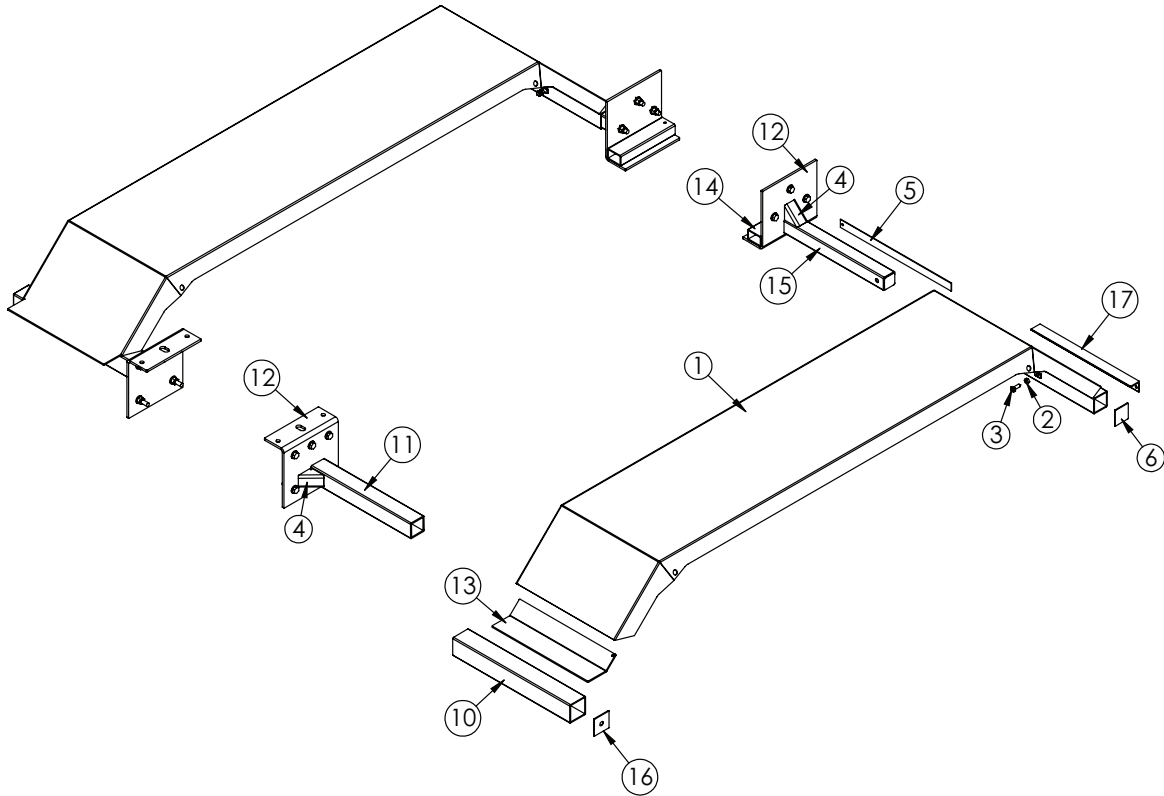
## Poly Tandem Fender Assembly - PN 58217



### PN 58217

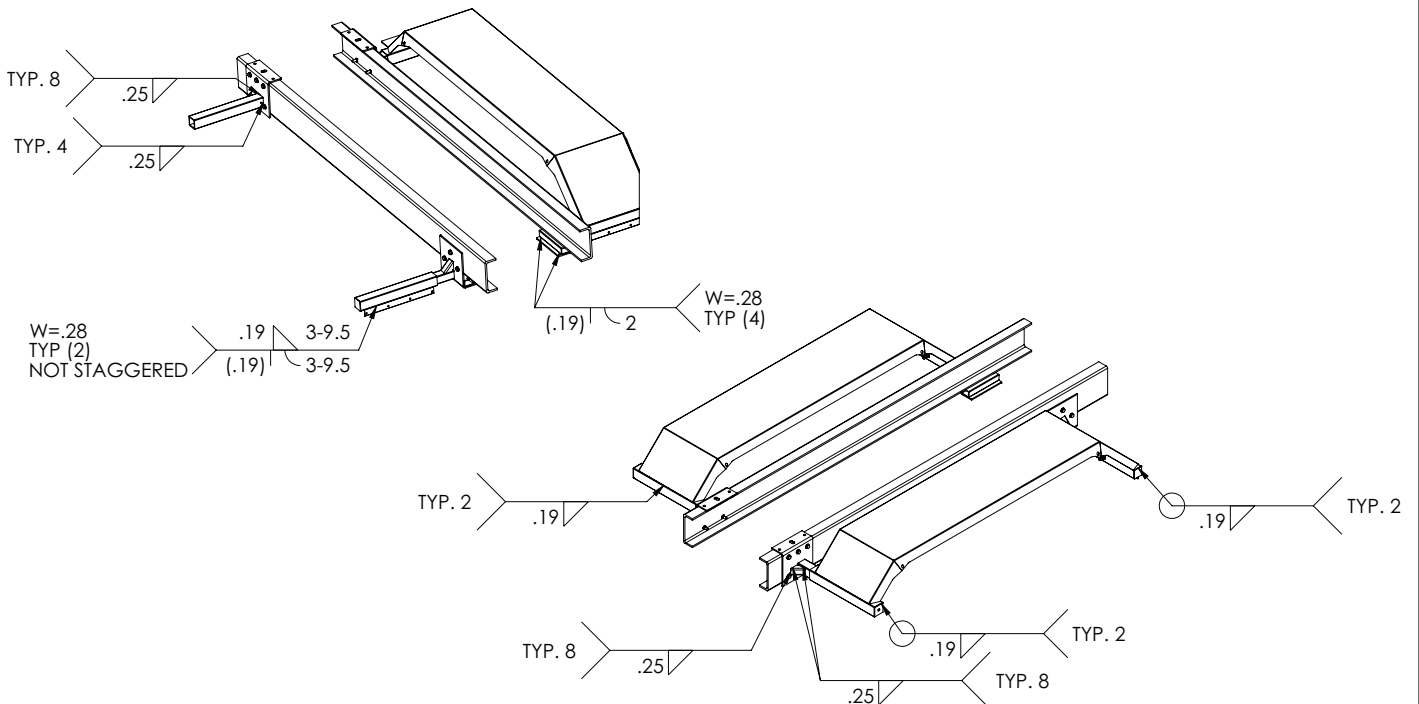
| ITEM | PART No. | DESCRIPTION                            | QTY. |
|------|----------|--|------|
| 1    | 64060    | FENDER POLY MIN 900 FRONT/REAR         | 4    |
| 2    | 102205   | MNT KIT FENDER MID SUPPORT TANDEM POLY | 1    |
| 3    | 5733     | MTG KIT OFFSET POLY FENDER (FLEET)     | 2    |
| 4    | 7633     | FENDER MOUNT ASM KIT                   | 2    |

# Steel Tandem Fender Assembly - PN 100617

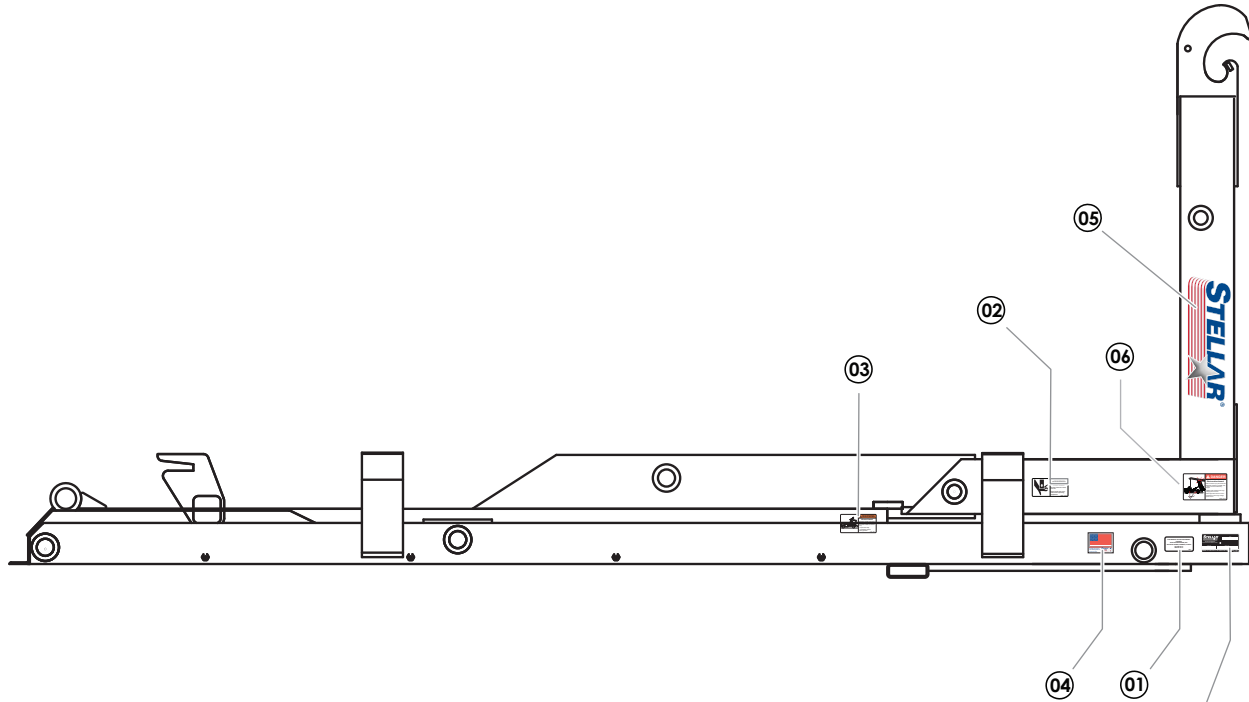


## PN 100617

| ITEM | PART No. | DESCRIPTION                     | QTY. | ITEM | PART No. | DESCRIPTION                                | QTY. |
|------|----------|---------------------------------|------|------|----------|--|------|
| 1    | 46121    | FENDER WLDMT STEEL TANDEM KP60  | 2    | 10   | 46119    | WLDMT TUBE FRONT FENDER PC BLACK           | 2    |
| 2    | 0537     | NUT 0.50-13 HH                  | 4    | 11   | 46117    | TUBE FRONT FENDER SUPPORT PC BLACK         | 2    |
| 3    | 46590    | CAP SCR 0.50X1.50 SQ HD CP SS   | 4    | 12   | 46906    | BRKT GANTRY MNT PC BLACK                   | 4    |
| 4    | 47209    | BRKT FENDER KP60                | 4    | 13   | 97704    | BRKT FENDER MNT FRONT SI60/75 TANDEM STEEL | 2    |
| 5    | 47210    | FLAT 0.13X1.50X24.50 HR W/HOLE  | 2    | 14   | 100828   | TUBE 3.00X2.00X0.19WX12.00 W/HOLE          | 2    |
| 6    | 47211    | CAP .10X3.00X2.88 FENDER SI60   | 2    | 15   | 101886   | WLDMT TUBE 2.50X2.50X0.19WX22.00           | 2    |
| 7    | C1026    | CAP SCR 0.63-11X2.50 HHGR8      | 16   | 16   | 101888   | CAP .10X3.25X3.25 FENDER SI60              | 2    |
| 8    | C5902    | WASHER 0.63 SAE FLAT YELLOW GR8 | 32   | 17   | 45688    | MOUNT MUD FLAP KP60                        | 2    |
| 9    | 24868    | NUT 0.63-11 HHGR8 NYLOC         | 16   |      |          |  |      |

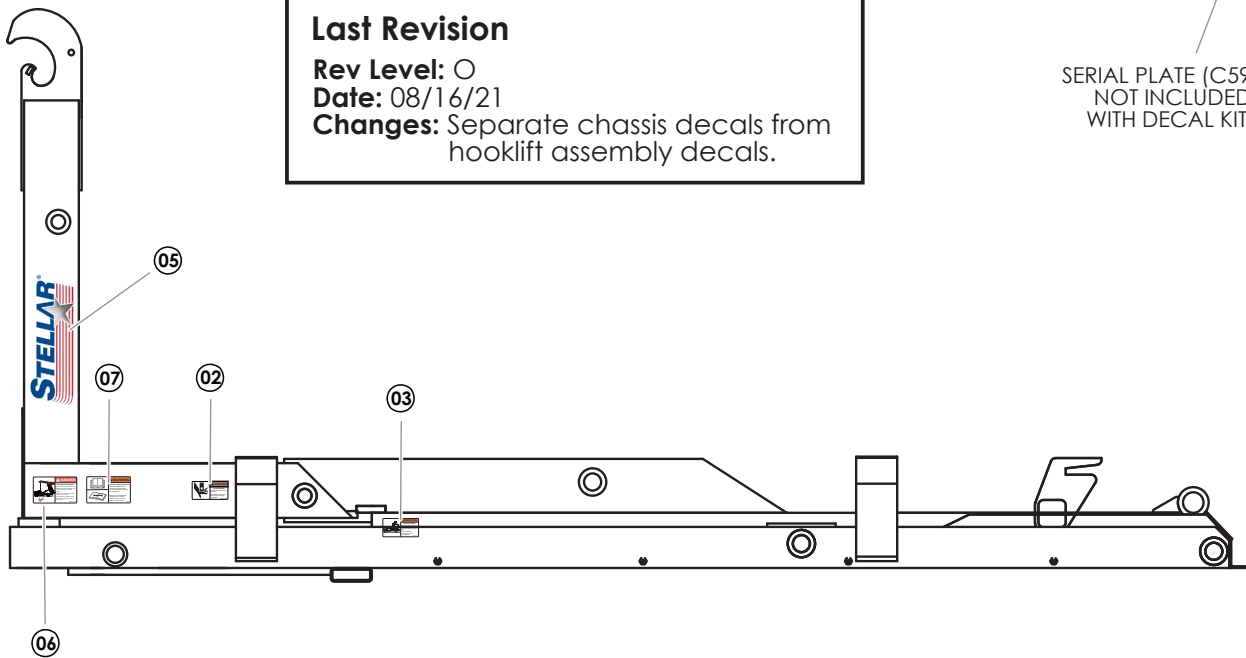


# Step 13A: Apply Hooklift Assembly Decals



**Last Revision**  
**Rev Level:** 0  
**Date:** 08/16/21  
**Changes:** Separate chassis decals from hooklift assembly decals.

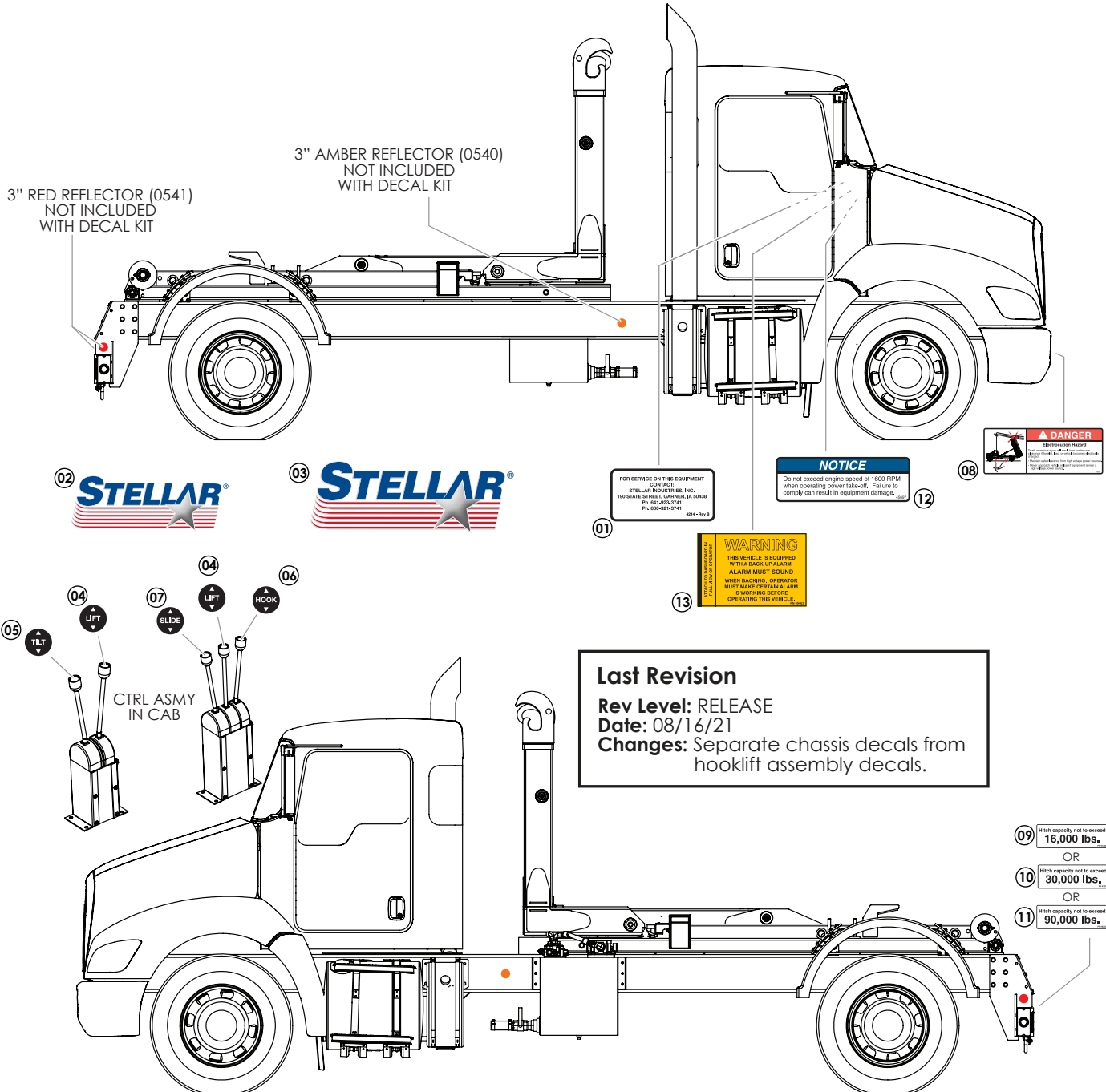
SERIAL PLATE (C5942)  
 NOT INCLUDED  
 WITH DECAL KIT



## PN D0779

| ITEM | PART No. | DESCRIPTION                      | QTY. |
|------|----------|----------------------------------|------|
| 01   | 4214     | DECAL CONTACT STELLAR            | 1    |
| 02   | 25627    | DECAL WARNING CRUSH              | 2    |
| 03   | 26134    | DECAL WARNING MISUSE TABS        | 2    |
| 04   | 35234    | DECAL STELLAR MADE IN THE USA    | 1    |
| 05   | 52681    | DECAL STELLAR LOGO 6.00X16.50    | 2    |
| 06   | 55832    | DECAL DANGER ELECTROCUTION HOOK  | 2    |
| 07   | 68024    | DECAL WARNING UNTRAINED OPERATOR | 1    |

# Step 13B: Apply Chassis Decals



**Last Revision**  
 Rev Level: RELEASE  
 Date: 08/16/21  
 Changes: Separate chassis decals from hooklift assembly decals.

## PN 121012

| ITEM | PART No. | DESCRIPTION                   | SUGGESTED LOCATION  | QTY. |
|------|----------|-------------------------------|---|------|
| 01   | 4214     | DECAL CONTACT STELLAR         | IN CAB  | 1    |
| 02   | 53850    | DECAL STELLAR LOGO 4.00X11.50 | SHIPPED LOOSE - OPTIMAL PLACEMENT   | 1    |
| 03   | 52681    | DECAL STELLAR LOGO 6.00X16.50 | SHIPPED LOOSE - OPTIMAL PLACEMENT   | 1    |
| 04   | 39211    | DECAL HOOKLIFT LEVER LIFT     | CONTROL TOWER   | 2    |
| 05   | 39212    | DECAL HOOKLIFT LEVER TILT     | CONTROL TOWER   | 2    |
| 06   | 55414    | DECAL HOOKLIFT LEVER HOOK     | CONTROL TOWER   | 2    |
| 07   | 55754    | DECAL HOOKLIFT LEVER SLIDE    | CONTROL TOWER   | 2    |
| 08   | 79983    | DECAL DANGER ELECTROCUTION    | FRONT BUMPER - STREET SIDE OR REAR BUMPER - CURB SIDE                                 | 1    |
| 09   | 91220    | DECAL HITCH CAPACITY 16K      | ] SELECT APPROPRIATE CAPACITY;<br>REAR BUMPER - ABOVE PINTLE LOCATION; DISCARD OTHERS | 1    |
| 10   | 91219    | DECAL HITCH CAPACITY 30K      |   | 1    |
| 11   | 68222    | DECAL HITCH CAPACITY 90K      |   | 1    |
| 12   | 45697    | ENGINE SPEED PTO CAUTION      | IN CAB  | 1    |
| 13   | 69463    | DECAL BACK-UP ALARM VERIFY    | IN CAB  | 1    |

## Step 14: Fill reservoir and activate hydraulic flow.

- Fill reservoir to site gauge, within 3" from the top (Roughly 10 Gallons). Note: ISO 32 hydraulic oil is recommended.
- When connections are secure, activate hydraulic flow by opening the ball valve on the bottom of the reservoir. This will allow oil to flow from the reservoir to the pump.

## Step 15: Operate hooklift.

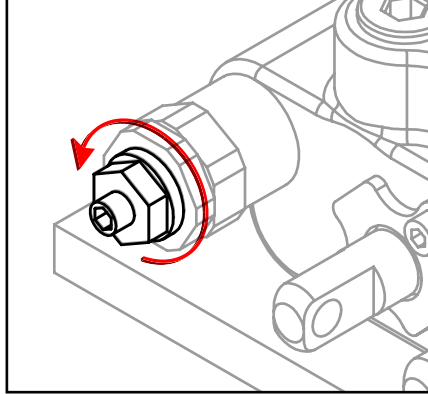
- **⚠ WARNING** Stellar® Hooklift operators must conform to the qualifications specified in the *Shuttle Hooklift Safety, Operation, Maintenance, Troubleshooting Manual*. Read and understand all manuals and safety signs before operating or servicing this equipment.
- Bleed the air out of the hydraulic system.
- Check the hydraulic oil level and add oil if needed. When checking hydraulic oil level, make certain that **all system cylinders** are fully retracted.
- Calibrate dump light system.
- Be sure to check all clearances.
- Be sure that relief pressure is no higher than 4200 PSI.

## Set System Relief Pressure

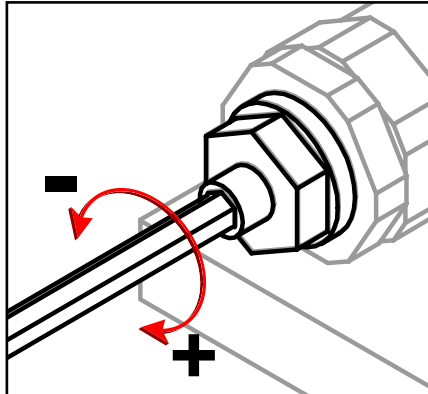
1. Engage the PTO. Run the PTO at 1200 RPM.

2. Push the lever labeled 'lift' until the boom bottoms out. Keep pushing the lever forward until the pressure is set.

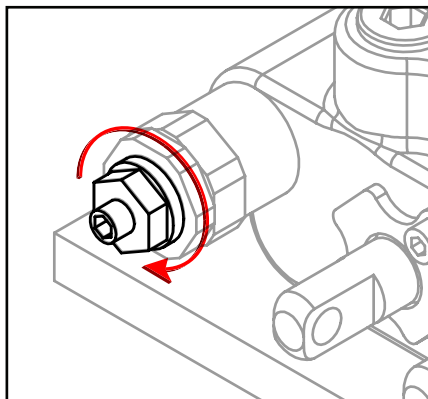
3. Locate the main relief valve and release the jam nut using a 13 mm wrench:



4. Adjust the system relief pressure using 4 mm allen wrench (See chart on previous page). Clockwise increases pressure, counter clockwise decreases pressure:



5. Once system pressure is set, tighten the jam nut to lock system pressure. Permanent thread lock should not be used:

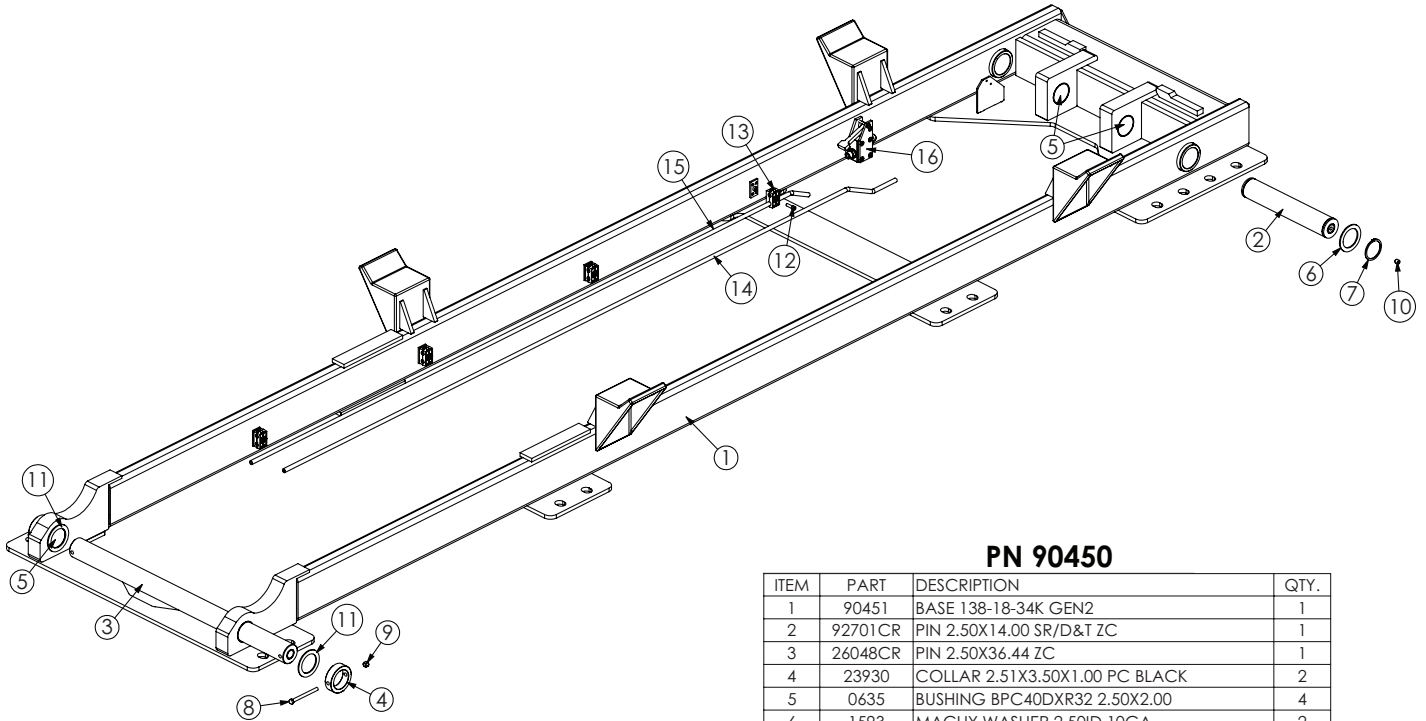


6. Release all functions and disengage the PTO. Snap tamper cap into position over the jam nut. The break away clip will be destroyed if the cap is removed.



# Chapter 3 - Assembly Drawings

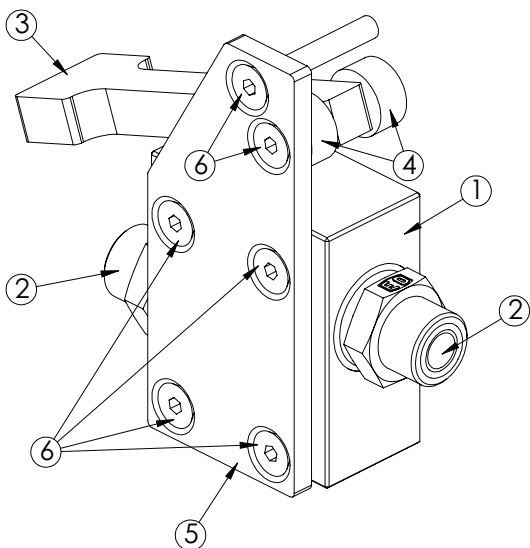
## Base Assembly - PN 90450



### PN 90450

| ITEM | PART    | DESCRIPTION                               | QTY. |
|------|---------|---|------|
| 1    | 90451   | BASE 138-18-34K GEN2                      | 1    |
| 2    | 92701CR | PIN 2.50X14.00 SR/D&T ZC                  | 1    |
| 3    | 26048CR | PIN 2.50X36.44 ZC                         | 1    |
| 4    | 23930   | COLLAR 2.51X3.50X1.00 PC BLACK            | 2    |
| 5    | 0635    | BUSHING BPC40DXR32 2.50X2.00              | 4    |
| 6    | 1593    | MACHY WASHER 2.50ID 10GA                  | 2    |
| 7    | 0636    | SNAP RING 2.50 HD                         | 2    |
| 8    | 32086   | CAP SCR 0.38-16X4.25 HHGR5                | 2    |
| 9    | 0347    | NUT 0.38-16 HHGR5 NYLOC                   | 2    |
| 10   | 58052   | SET SCREW 0.50-13X0.50 W/ RED PATCH       | 2    |
| 11   | 1547    | THRUST WASHER 2.51DIA UHMW .12THK         | 4    |
| 12   | 6034    | CAP SCR 0.31-18X1.00 SH                   | 4    |
| 13   | 92791   | CLAMP 0.50 PORT TUBE TWIN (1 SET)         | 4    |
| 14   | 70528   | TUBE ASM 0.50 120-14 FLEX TILT RETRACT ZC | 1    |
| 15   | 70529   | TUBE ASM 0.50 120-14 FLEX TILT EXTEND ZC  | 1    |
| 16   | 98018   | PLUNGER VALVE ASM 138-18-40               | 1    |

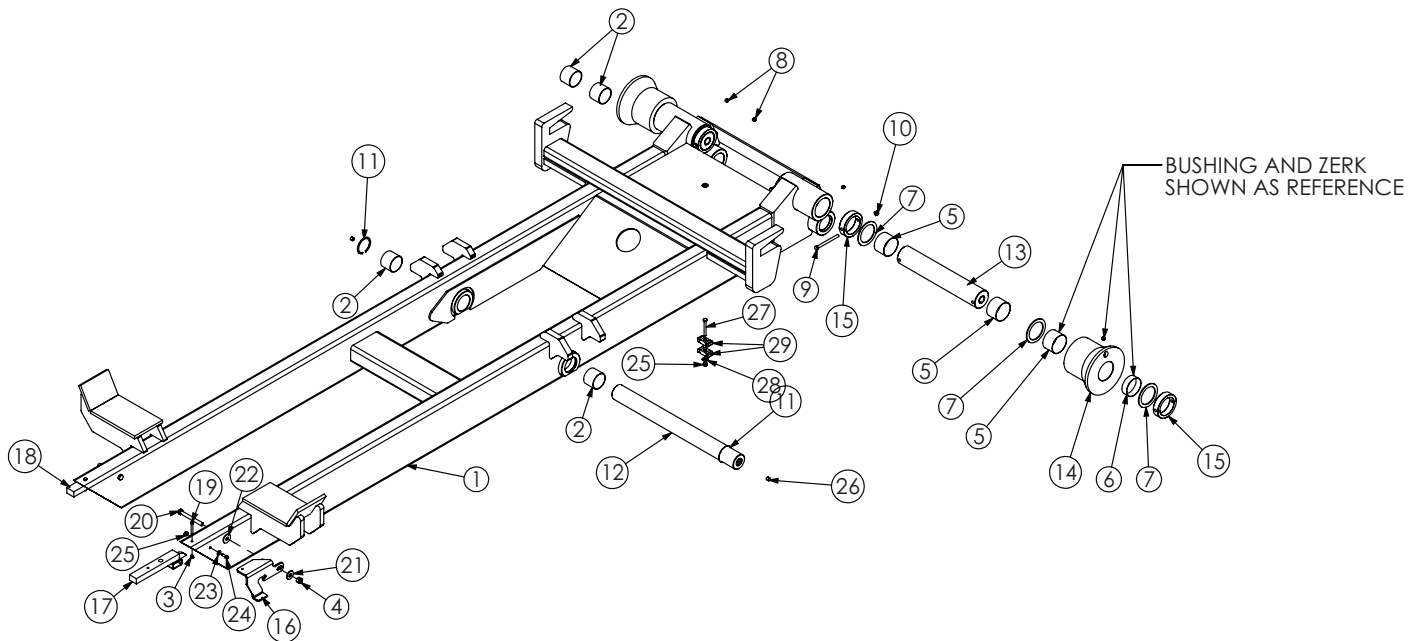
## Plunger Valve Assembly - PN 98018



### PN 98018

| ITEM | PART  | DESCRIPTION                             | QTY. |
|------|-------|---|------|
| 1    | 53853 | VALVE PLUNGER VILLA HYD NORMALLY CLOSED | 1    |
| 2    | 57735 | FTG 8-8 MBSPP-MFS STRAIGHT              | 2    |
| 3    | 70293 | LEVER PLUNGER VALVE FINGER              | 1    |
| 4    | 70294 | COLLAR 0.28X0.75X0.38 UHMW              | 2    |
| 5    | 77784 | PLATE MNT BRKT STOP SYSTEM CS HOLES     | 1    |
| 6    | 77785 | CAP SCR 0.25-20X1.75 FHSH               | 6    |

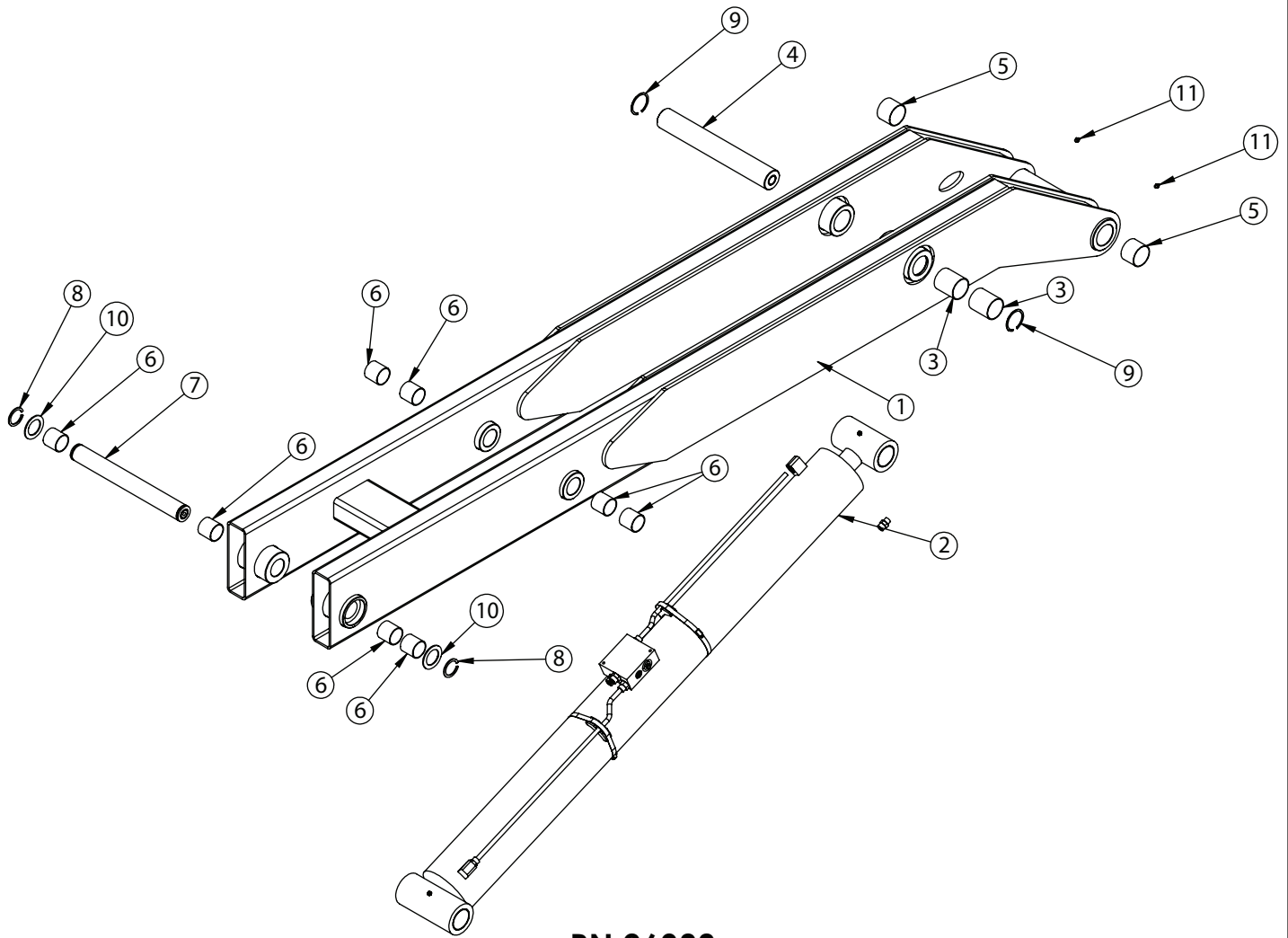
# Dump Assembly - PN 92702



## PN 92702

| ITEM | PART    | DESCRIPTION                              | QTY | ITEM | PART  | DESCRIPTION                           | QTY |
|------|---------|--|-----|------|-------|---------------------------------------|-----|
| 1    | 92703   | DUMP 138-18-34K GEN2                     | 1   | 16   | 93509 | LEVER PLUNGER VALVE FORMED SHUTTLE40  | 1   |
| 2    | 0635    | BUSHING 40DXR32 GARLOCK                  | 6   | 17   | 93507 | TAB LOADER WLDMT BREAK AWAY W/STOP    | 1   |
| 3    | 0333    | NUT 0.25-20 HHGR5 NYLOC                  | 2   | 18   | 95252 | TAB LOADER BREAK AWAY STRAIGHT W/STOP | 1   |
| 4    | C6106   | NUT 0.50-13 HHGR5 NYLOC                  | 2   | 19   | 0481  | CAP SCR 0.25-20X2.00 HHGR5            | 2   |
| 5    | 0865    | BUSHING BPC48DXR32 3.00X2.00             | 6   | 20   | 0507  | CAP SCR 0.50-13X4.50 HHGR5            | 2   |
| 6    | 13344   | BUSHING 48DXR32 GARLOCK                  | 2   | 21   | 0352  | WASHER 0.50 USS FLAT                  | 1   |
| 7    | 1548    | THRUST WASHER 3.01DIA UHMW .12 THK       | 6   | 22   | C4516 | WASHER 0.56IDX1.50ODX0.13 THK NYLON   | 1   |
| 8    | c1592   | ZERK 1/8 NPT STRAIGHT                    | 6   | 23   | 0340  | WASHER 0.25 USS FLAT                  | 1   |
| 9    | C0954   | CAP SCR 0.38-16X4.50 HHGR5               | 4   | 24   | 38263 | CAP SCR 0.31-18X0.75 SH               | 1   |
| 10   | 0347    | NUT 0.38-16 HHGR5 NYLOC                  | 4   | 25   | 0342  | NUT 0.31-18 HHGR5 NYLOC               | 2   |
| 11   | 22216   | SNAP RING INSIDE 2.50                    | 2   | 26   | 58052 | SET SCREW 0.50-13X0.50 W/ RED PATCH   | 2   |
| 12   | 27376CR | PIN 2.50X26.25 D&T ZC                    | 1   | 27   | C0929 | CAP SCR 0.31-18X2.75 HHGR5            | 1   |
| 13   | 26167CR | PIN 3.00X16.75 ZC                        | 2   | 28   | 0343  | WASHER 0.31 USS FLAT                  | 2   |
| 14   | 22432   | ROLLER 3.00X6.00X3.81X8.00               | 2   | 29   | 8622  | CLAMP HOSE/TUBE AG-2                  | 2   |
| 15   | 26168   | COLLAR RETAINING 3.01X4.00X1.00 PC BLACK | 4   |      |       |                                       |     |

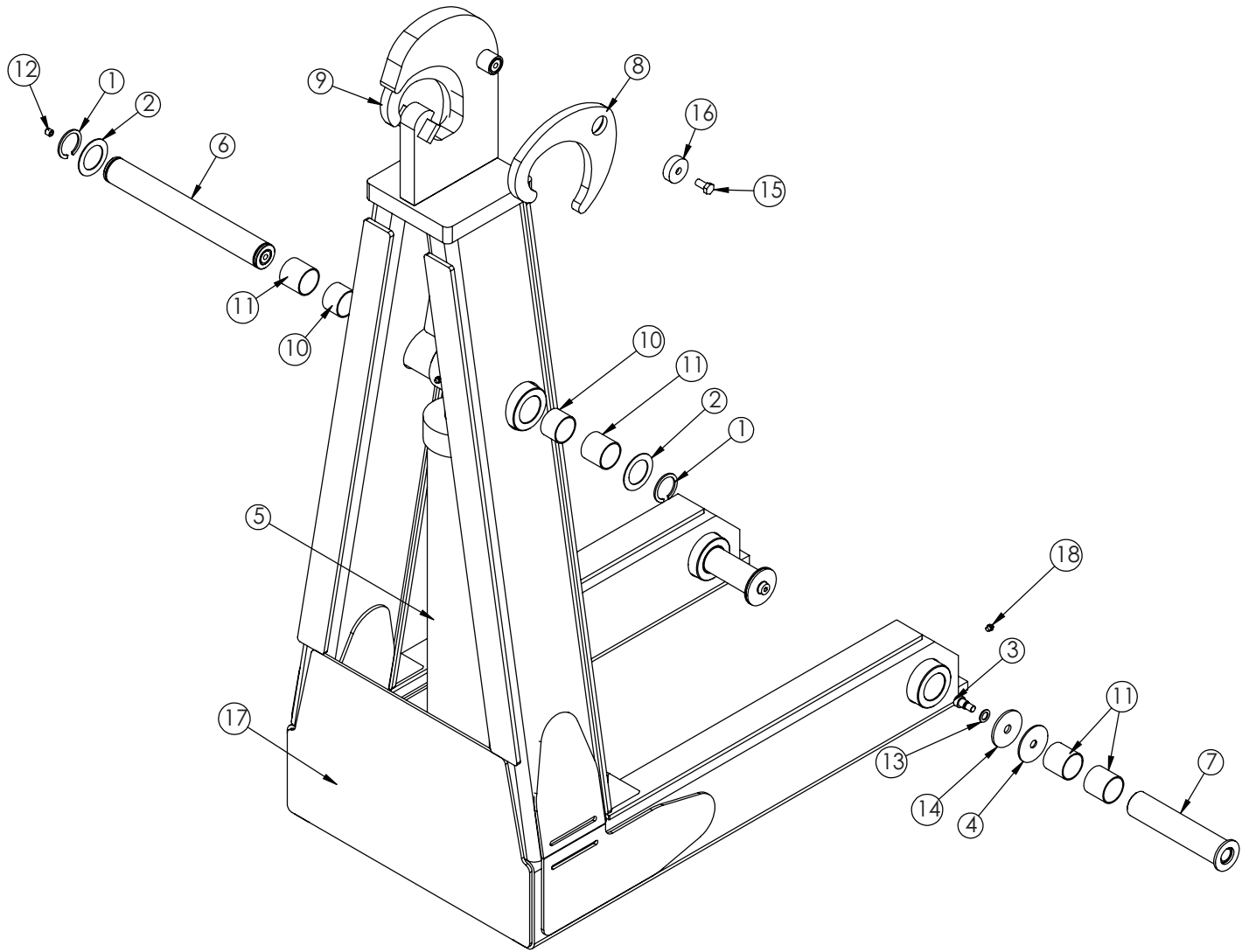
# Secondary Assembly - PN 26388



## PN 26388

| ITEM | PART    | DESCRIPTION                       | QTY |
|------|---------|-----------------------------------|-----|
| 1    | 26389   | SECONDARY 138-18-32K              | 1   |
| 2    | 44340   | CYLINDER ASM D1727 138-18-32K     | 1   |
| 3    | 5739    | BUSHING 40DXR48 GARLOCK           | 2   |
| 4    | 26378ZP | PIN 2.50X17.75                    | 1   |
| 5    | 0635    | BUSHING 40DXR32 GARLOCK           | 2   |
| 6    | 4381    | BUSHING 32DXR32 2.00X2.00 GARLOCK | 8   |
| 7    | 30243ZP | PIN 2.00X17.75 SR                 | 1   |
| 8    | 0108    | SNAP RING 2.00 7200-200           | 2   |
| 9    | 22216   | SNAP RING INSIDE 2.50             | 2   |
| 10   | 1546    | THRUST WASHER 2.01DIA UHMW .12THK | 2   |
| 11   | c1592   | ZERK 1/8 NPT STRAIGHT             | 2   |

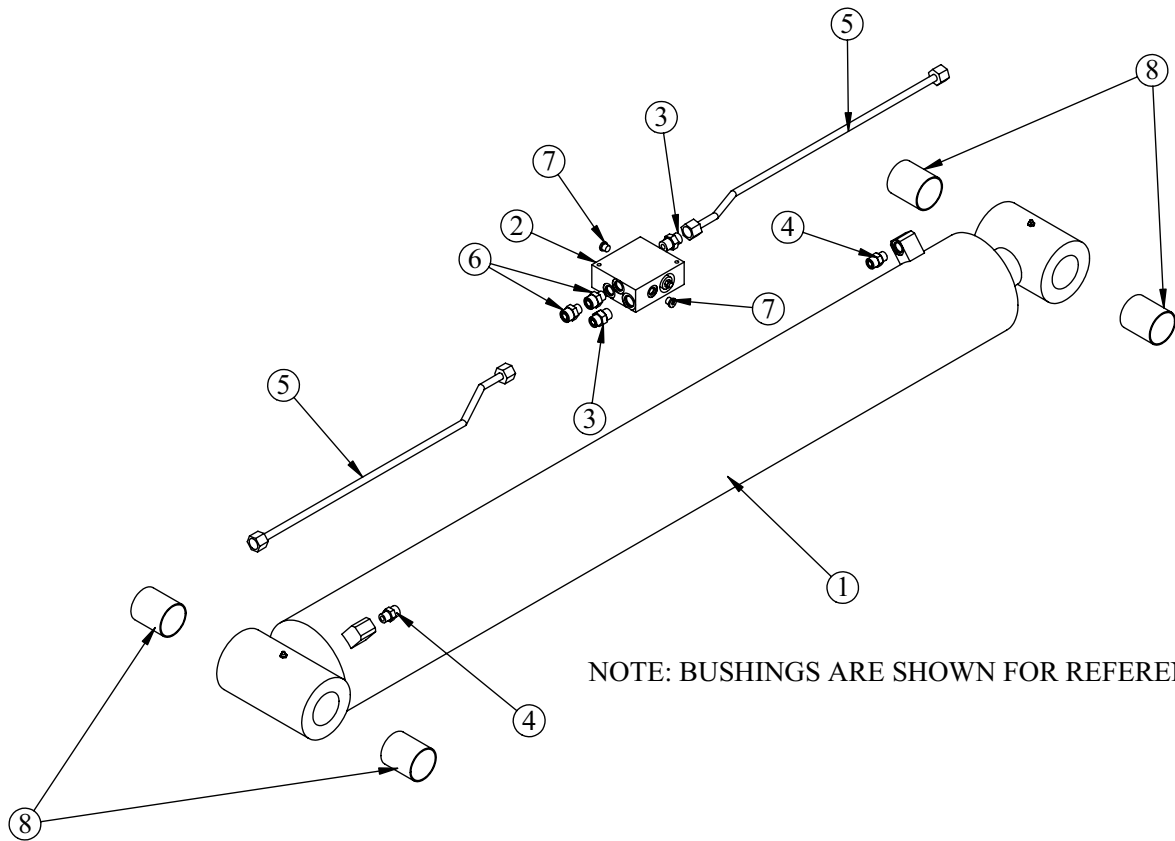
# Tilt Assembly - PN 93510



## PN 93510

| ITEM | PART    | DESCRIPTION                          | QTY |
|------|---------|--------------------------------------|-----|
| 1    | 0108    | SNAP RING 2.00 7200-200              | 2   |
| 2    | 0377    | MACHY WASHER 2.00ID 14GA             | 2   |
| 3    | 12673   | BOLT SHOULDER 0.63X0.50 0.50-13X0.75 | 2   |
| 4    | 12719   | THRUST WASHER 0.64X3.00X0.125        | 2   |
| 5    | 1748    | CYLINDER 4.00X24.50                  | 1   |
| 6    | 93863CR | PIN 2.00X16.06 SR/D&T ZC             | 1   |
| 7    | 27768CR | PIN WLDMT 2.00X9.38 ZC               | 2   |
| 8    | 28765   | LATCH SS 40000K PC BLACK             | 1   |
| 9    | 28766   | LATCH CS 40000K PC BLACK             | 1   |
| 10   | 4380    | BUSHING 32DXR24 2.00X1.50 GARLOCK    | 2   |
| 11   | 4381    | BUSHING 32DXR32 2.00X2.00 GARLOCK    | 6   |
| 12   | 58052   | SET SCREW 0.50-13X0.50 W/ RED PATCH  | 1   |
| 13   | 75007   | THRUST WASHER 0.63X1.13X0.09 MTI-10  | 2   |
| 14   | 8454    | PIN CAP 0.69X3.00X0.19 YZ            | 2   |
| 15   | 8457    | CAP SCR 0.50-13X1.00 SS              | 2   |
| 16   | 8818    | PIN CAP 0.55X2.00X0.63 YZ            | 2   |
| 17   | 93511   | TILT 108-14-32K GEN2                 | 1   |
| 18   | c1592   | ZERK 1/8 NPT STRAIGHT                | 2   |

# Main Cylinder - PN 44340

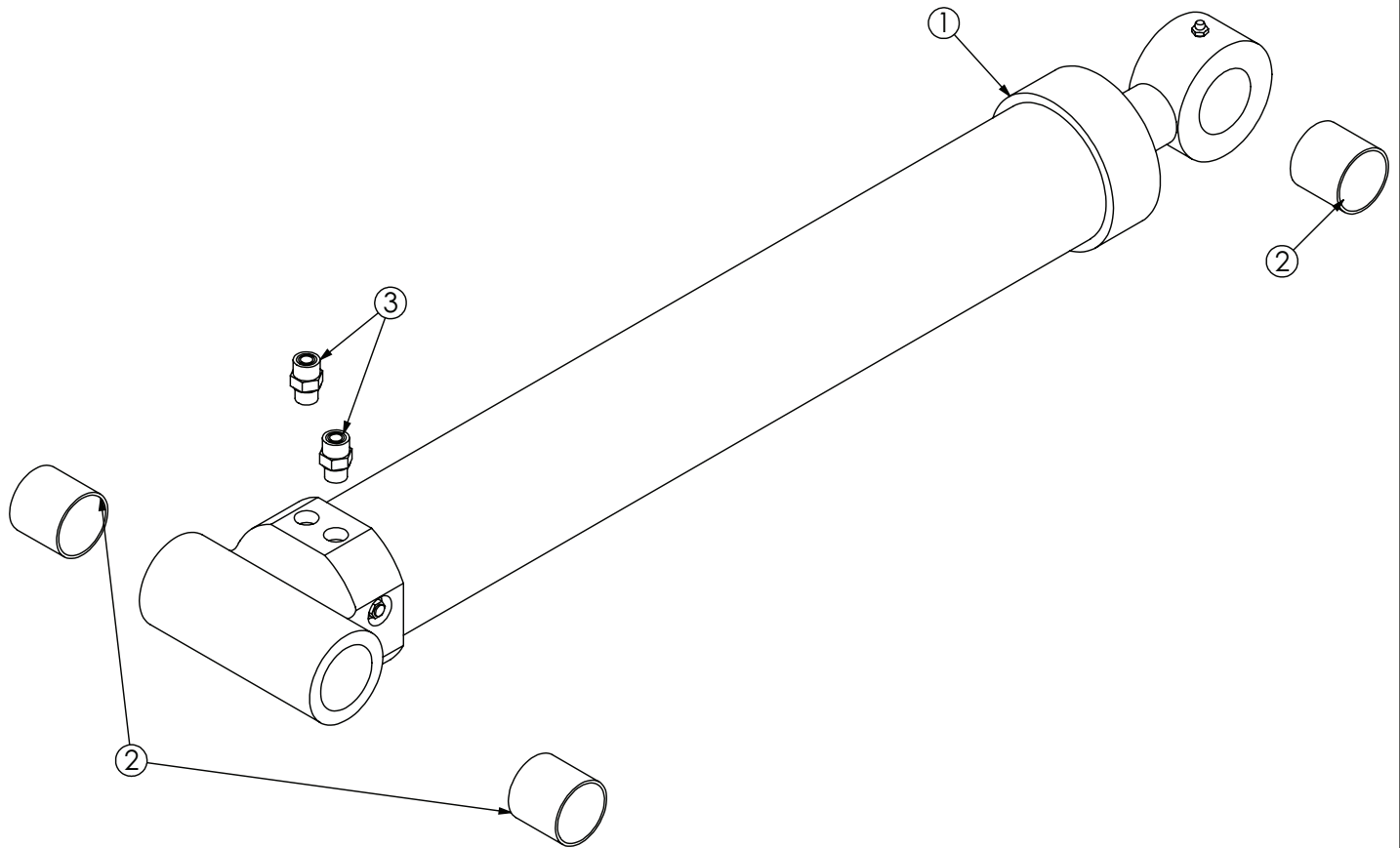


NOTE: BUSHINGS ARE SHOWN FOR REFERENCE.

## PN 44341

| ITEM | PART   | DESCRIPTION                      | QTY. |
|------|--------|----------------------------------|------|
| 1    | 31242P | CYLINDER 31242 7.00X57.50 PAINT  | 1    |
| 2    | 15995  | MANIFOLD ASM DUAL T2A 5000PSI    | 1    |
| 3    | C2252  | FTG ADAPT 8-10-F5OLO-S           | 2    |
| 4    | 1554   | FTG ADAPT 8-F5OLO-S              | 2    |
| 5    | 18396  | TUBE ASM 0.50X26.25              | 2    |
| 6    | 31053  | FTG ADAPT 10-8 F5OLO-S           | 2    |
| 7    | C4961  | PLUG STR HOLLOW HEX 0.38 6-HP5ON | 2    |
| 8    | 5739   | BUSHING 40DXR48 GARLOCK          | 4    |

# Tilt Cylinder Assembly - PN 23456



## PN 23456

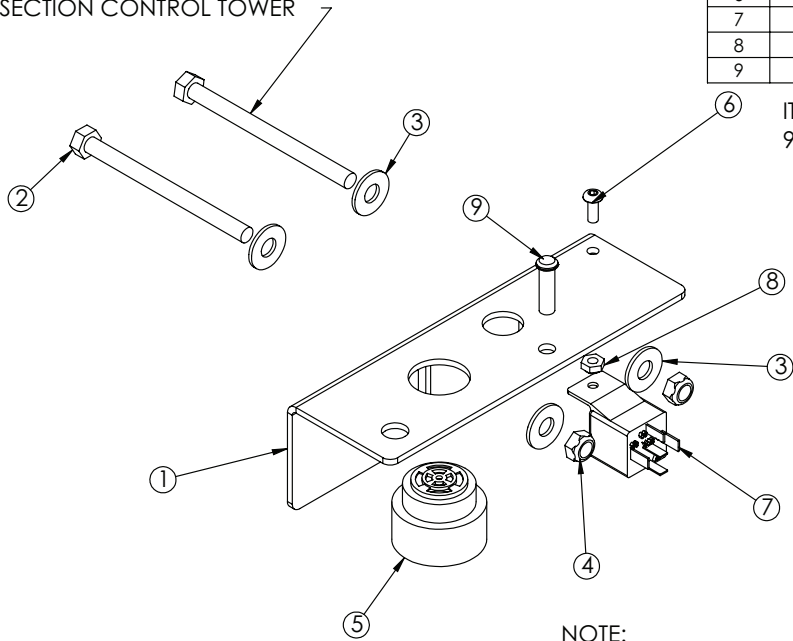
| ITEM | PART | DESCRIPTION                       | QTY. |
|------|------|-----------------------------------|------|
| 1    | 1748 | CYLINDER 4.00X24.50               | 1    |
| 2    | 4381 | BUSHING 32DXR32 2.00X2.00 GARLOCK | 3    |
| 3    | 1554 | FTG 8-8 MFS-MORB STRAIGHT         | 2    |

BUSHINGS SHOWN AS REFERENCE

# Optional Tab Alarm Kit - PN 43120

| ITEM | PART  | DESCRIPTION                      | QTY. |
|------|-------|----------------------------------|------|
| 1    | 26293 | PLATE TAB ALARM MNT              | 1    |
| 2    | 0491  | CAP SCR 0.31-18X4.00 HHGR5       | 2    |
| 3    | 0343  | WASHER 0.31 USS FLAT ZINC        | 4    |
| 4    | 0342  | NUT 0.31-18 HH NYLOC             | 2    |
| 5    | 26031 | BACKUP ALARM PIEZO JAMECO 123537 | 1    |
| 6    | D1711 | CAP SCR #10-24X0.50 BTNHD SS     | 1    |
| 7    | C6072 | RELAY BOSCH 20-30 AMP            | 1    |
| 8    | 26034 | NUT #10-24 HH NYLOC              | 1    |
| 9    | 61233 | LIGHT LED CONTROL PANEL RED      | 1    |

NOTE: USE PN 20057 WITH  
3 SECTION CONTROL TOWER

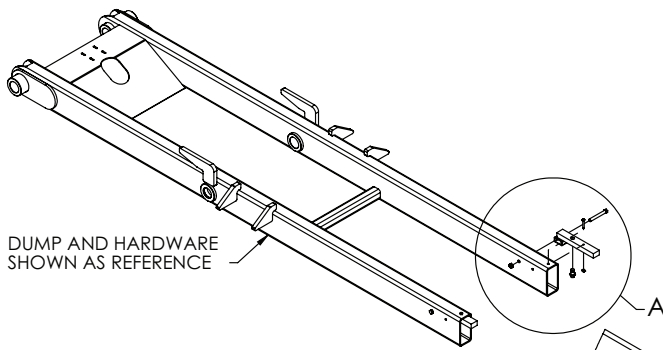


ITEMS NOT SHOWN:  
97097 -INSTRUCTIONS TAB ALARM KIT X 1

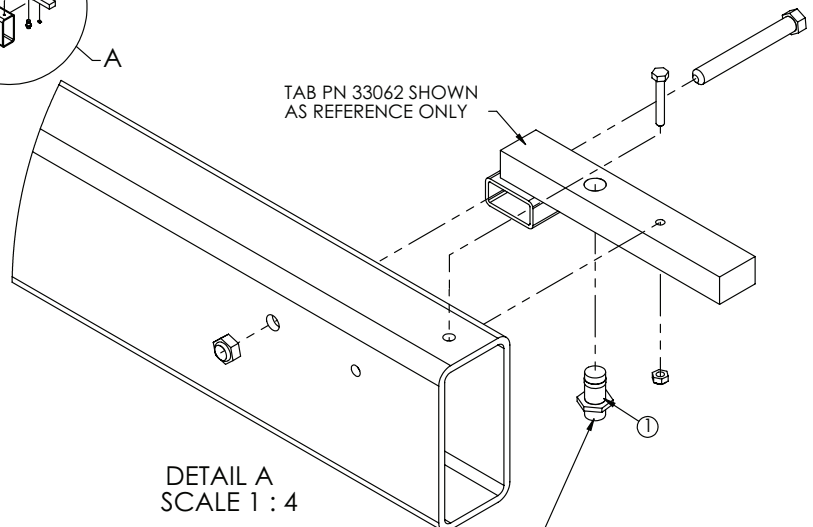
NOTE:  
WHEN USED WITH AIR CONTROL TOWERS BRACKET (PN 26293) IS NOT  
USED B/C COMPONENTS ARE TO BE INSTALLED IN TOWER ASSEMBLY

| ITEM | PART  | DESCRIPTION                    | QTY. |
|------|-------|--------------------------------|------|
| 1    | 26287 | SWITCH PROXIMITY CARLO GAVAZZI | 1    |

NOTE: WIRE HARNESS PN 26416 RUNS FROM THE  
PROX SWITCH THROUGH THE BACK END OF THE  
DUMP TUBE AND OUT. FROM THERE THE HARNESS  
RUNS TO THE FRONT OF THE TRUCK ATTACHING TO  
THE BASE OR INBETWEEN THE TRUCK FRAME RAILS  
TO BE CONNECTED TO WIRE HARNESS PN 26291.



DUMP AND HARDWARE  
SHOWN AS REFERENCE



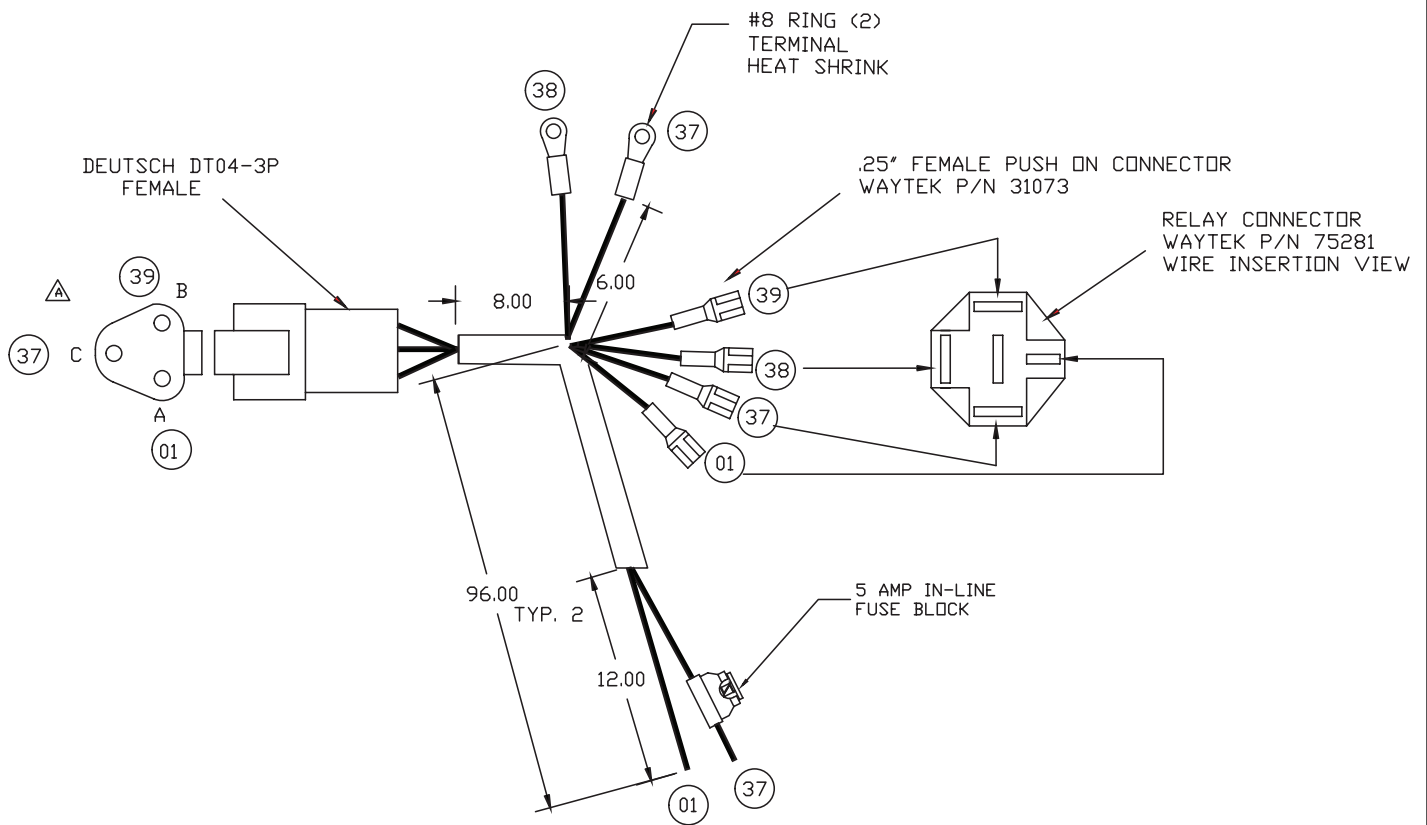
TAB PN 33062 SHOWN  
AS REFERENCE ONLY

DETAIL A  
SCALE 1 : 4

TO SET TAB ALARM ADJUST TO BE JUST FLUSH THEN  
UNSCREW 1/4 TURN AND TIGHTEN LOCK NUT.

# Optional Tab Alarm Wire Harness - PN 26291

- 1) ALL MEASUREMENTS ARE IN INCHES
- 2) ALL LOOM IS TO BE BRAIDED
- 3) EXCEPT WHERE NOTED ALL MEASUREMENTS ARE FROM THE BACK OF CONNECTORS TO THE CENTER OF HARNESS.
- 4) BRAIDING SHOULD BE 3' TO 4' BACK OF CONNECTORS EXCEPT WERE NOTED SO THAT THE CIRCUIT STAMPS ON THE WIRE ARE READABLE.
- 5) ALL LEADS ARE TO BE 16GA AND 6 INCHES UNLESS OTHERWISE NOTED.



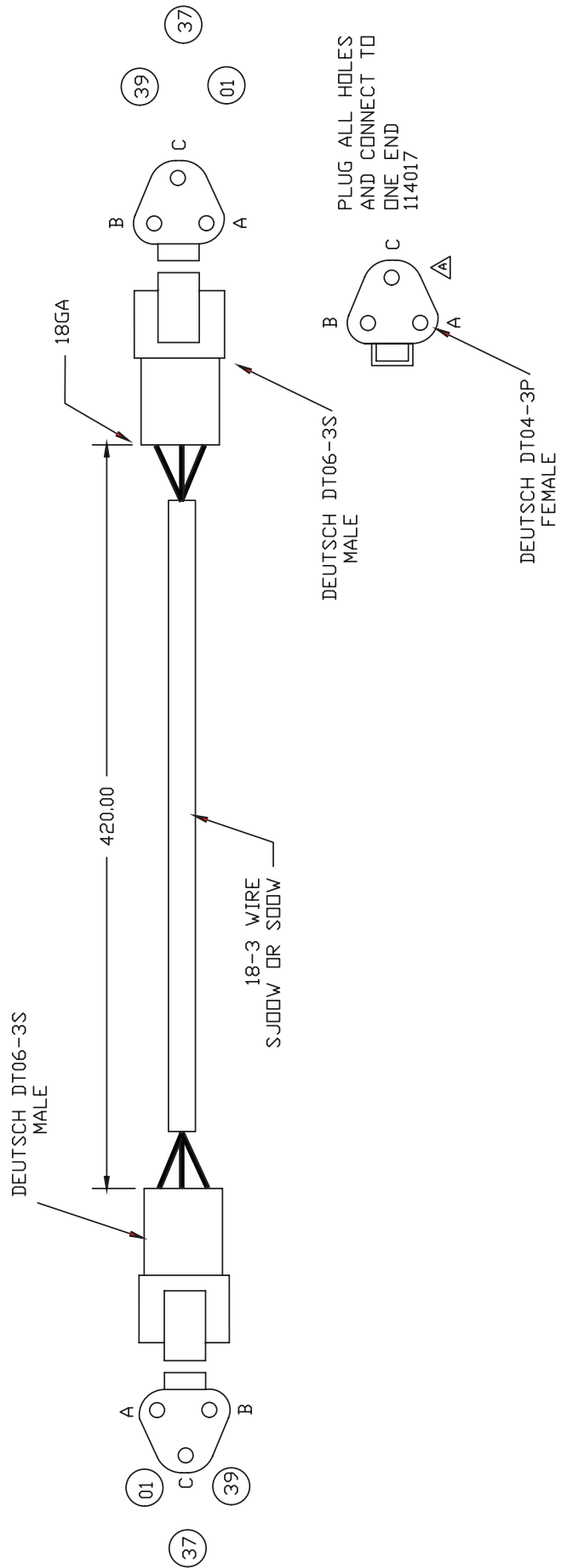
| CIRCUIT # | CIRCUIT       | WIRE GA | WIRE COLOR            |
|-----------|---------------|---------|-----------------------|
| 01        | GROUND        | 16GA    | BLACK WITH WHITE TEXT |
| 37        | IGNITION      | 16GA    | GREEN WITH WHITE TEXT |
| 38        | SAFETY GROUND | 16GA    | GREEN WITH WHITE TEXT |
| 39        | SAFETY SWITCH | 16GA    | GREEN WITH WHITE TEXT |



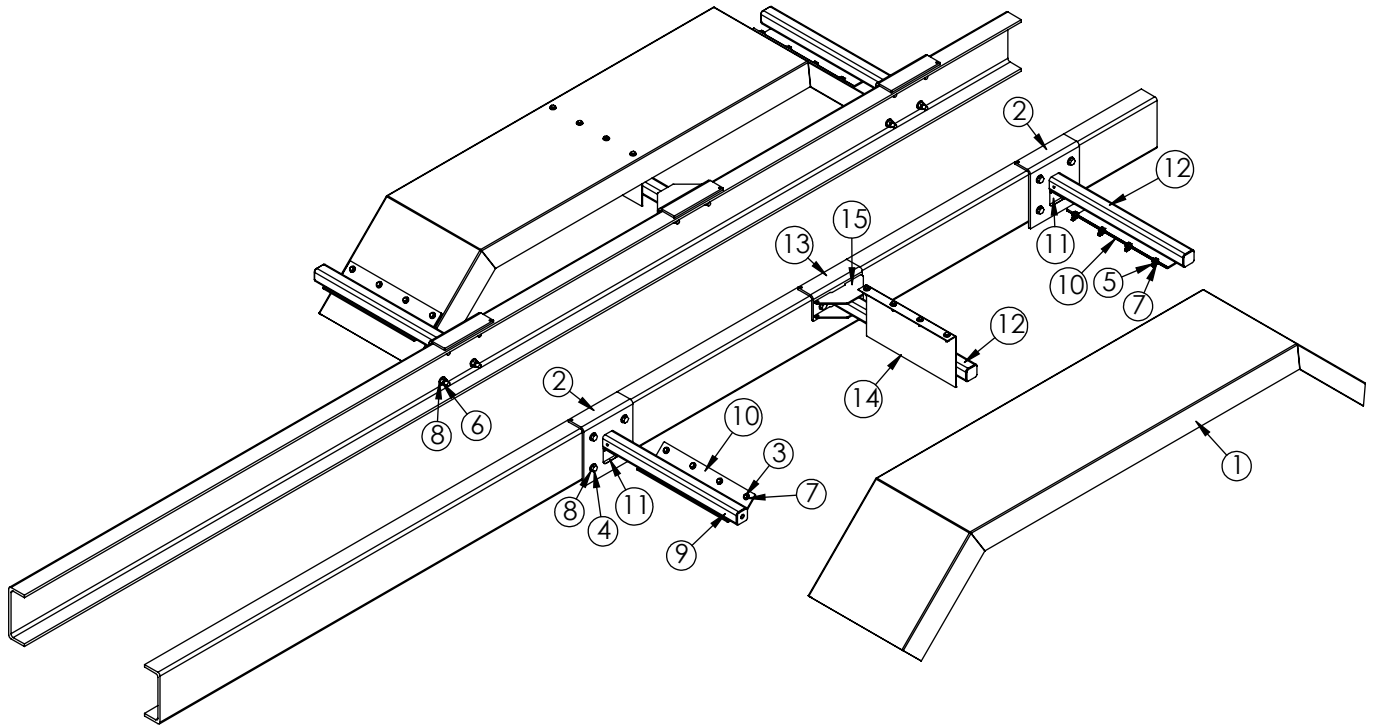
# Optional Proximity Switch Wire Harness - PN 26416

| CIRCUIT # | CIRCUIT       | WIRE GA | WIRE COLOR |
|-----------|---------------|---------|------------|
| 01        | GROUND        | 18GA    | BLACK      |
| 37        | IGNITION      | 18GA    | WHITE      |
| 39        | SAFETY SWITCH | 18GA    | GREEN      |

- 1) ALL MEASUREMENTS ARE IN INCHES
- 3) EXCEPT WHERE NOTED ALL MEASUREMENTS ARE FROM THE BACK OF CONNECTORS TO THE CENTER OF HARNESS.
- 4) JACKET SHOULD BE 3" TO 4" BACK OF CONNECTORS



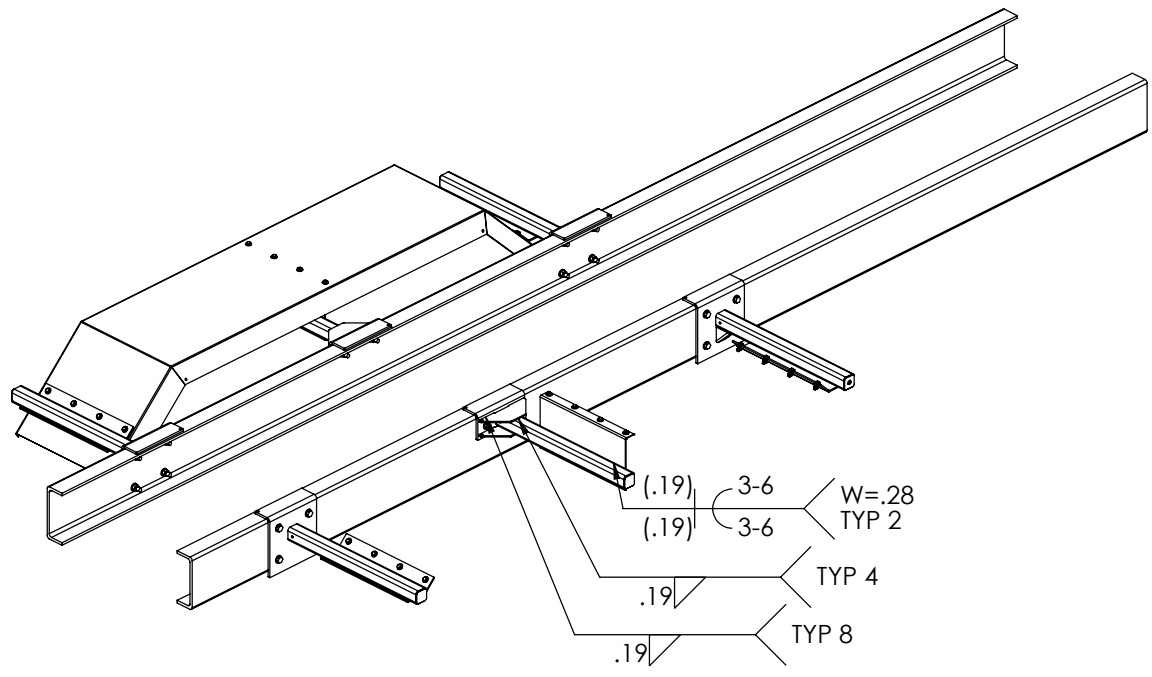
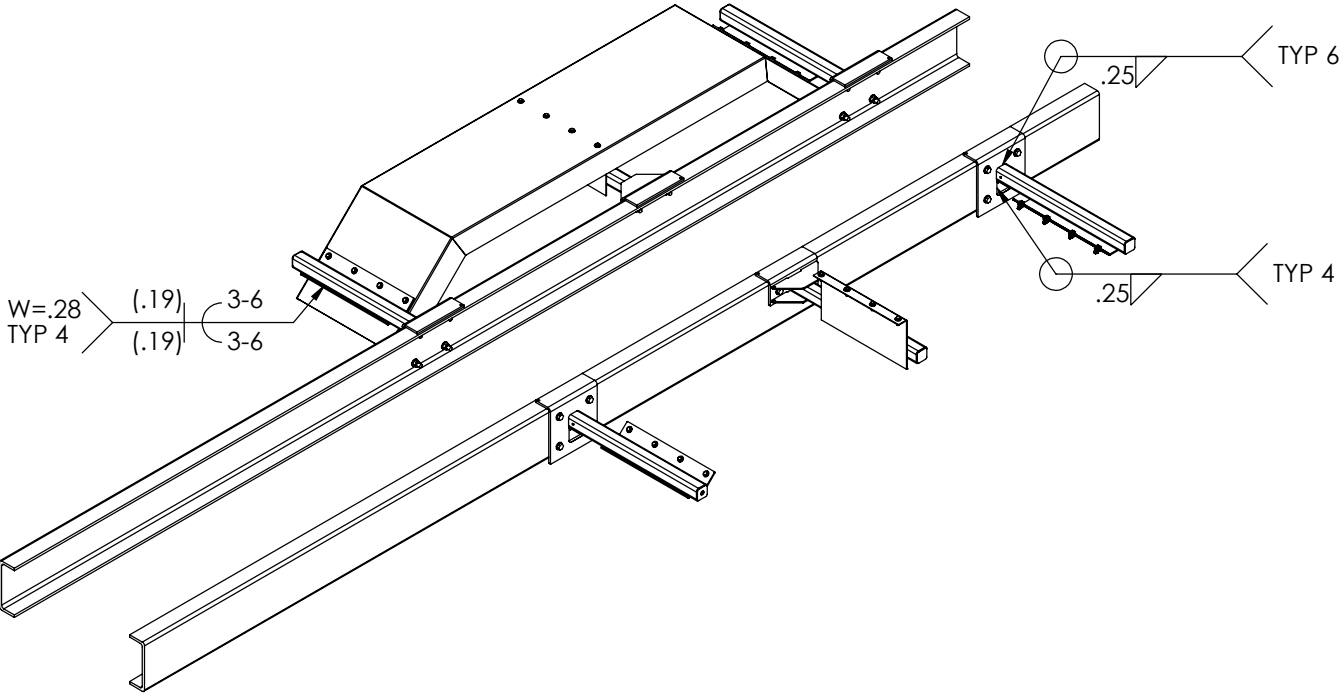
# Optional Fender Kit - PN 115695



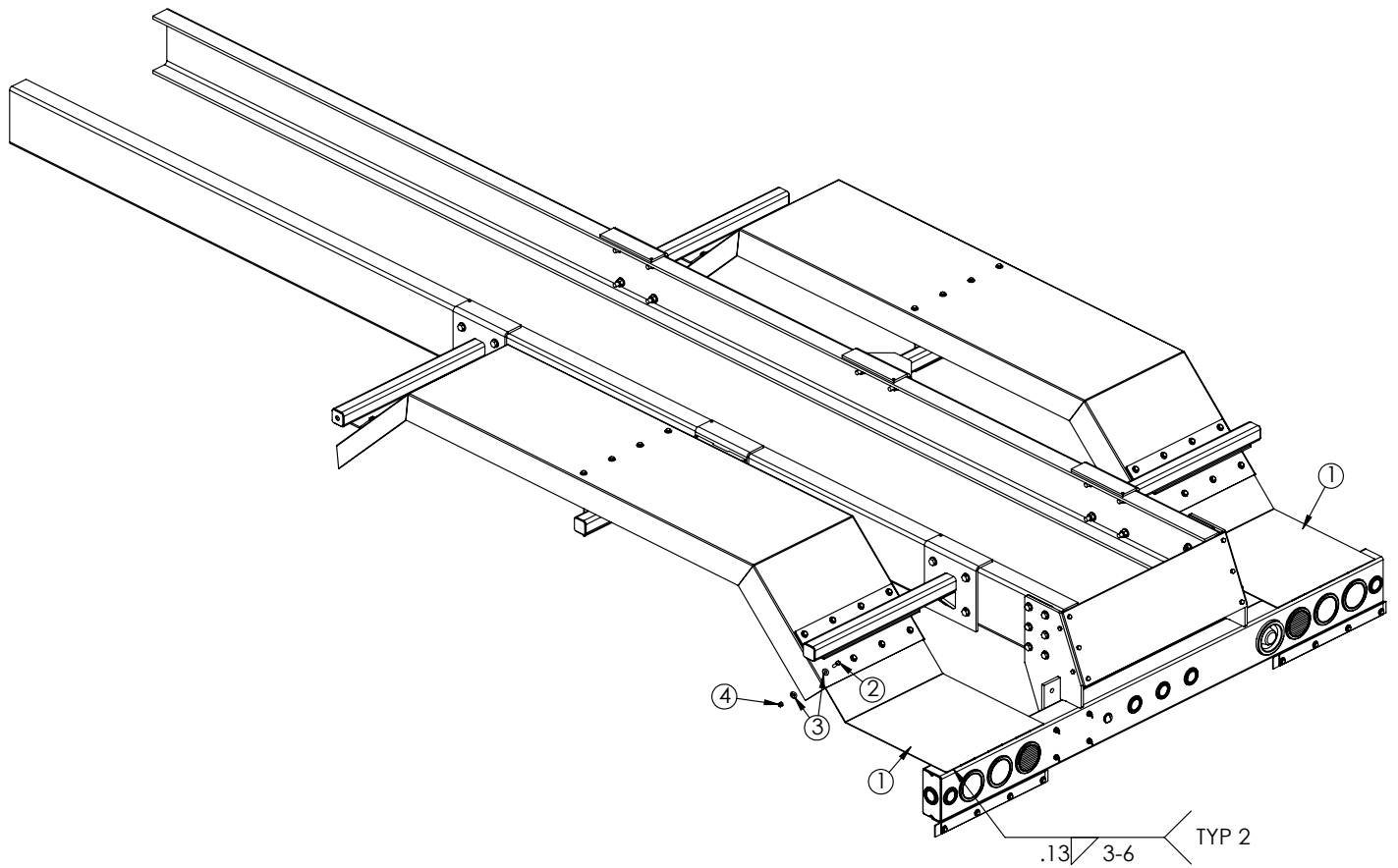
## PN 115695

| ITEM | PART No. | DESCRIPTION                                 | QTY. |
|------|----------|---|------|
| 01   | 118143   | FENDER TANDEM DPS CNE W/ PAINT              | 2    |
| 02   | 118842   | ANGLE FORMED 3.50X11.25X0.38X11.00          | 4    |
| 03   | 0335     | CAP SCR 0.38-16X1.25 HHGR5                  | 24   |
| 04   | C1026    | CAP SCR 0.63-11X2.50 HHGR8                  | 20   |
| 05   | 0347     | NUT 0.38-16 HHGR5 NYLOC                     | 24   |
| 06   | 24868    | NUT 0.63-11 HHGR8 NYLOC                     | 20   |
| 07   | 0346     | WASHER 0.38 USS FLAT                        | 48   |
| 08   | C5902    | WASHER 0.63 SAE FLAT YELLOW GR8             | 40   |
| 09   | 118839   | WLDMT TUBE 2.50X2.50X0.19WX30.00 W/HOLE     | 2    |
| 10   | 118676   | BRKT FENDER MNT FRONT HOOKLIFT TANDEM STEEL | 4    |
| 11   | 47209    | BRKT FENDER KP60                            | 3    |
| 12   | 118840   | WLDMT TUBE 2.50X2.50X0.19WX30.00            | 4    |
| 13   | 118843   | ANGLE FORMED 3.50X4.88X0.38X11.00           | 2    |
| 14   | 118837   | ANGLE FORMED 10GAX2.00X10.00X20.00          | 2    |
| 15   | 118841   | PLATE TAPPER TUBE MID MOUNT SUPPORT         | 4    |

# Optional Fender Kit - PN 115695 cont.



# Optional Threshold Plate Kit - PN 118281



## PN 118281

| ITEM | PART No. | DESCRIPTION                               | QTY. |
|------|----------|---|------|
| 01   | 118277   | PLATE BUMPER THRESHOLD TANDEM FENDER 24IN | 2    |
| 02   | 0335     | CAP SCR 0.38-16X1.25 HHGR5                | 8    |
| 03   | 0346     | WASHER 0.38 USS FLAT                      | 16   |
| 04   | 0347     | NUT 0.38-16 HHGR5 NYLOC                   | 8    |









Subject to Change without Notification.  
© 2022 Stellar Industries, Inc.