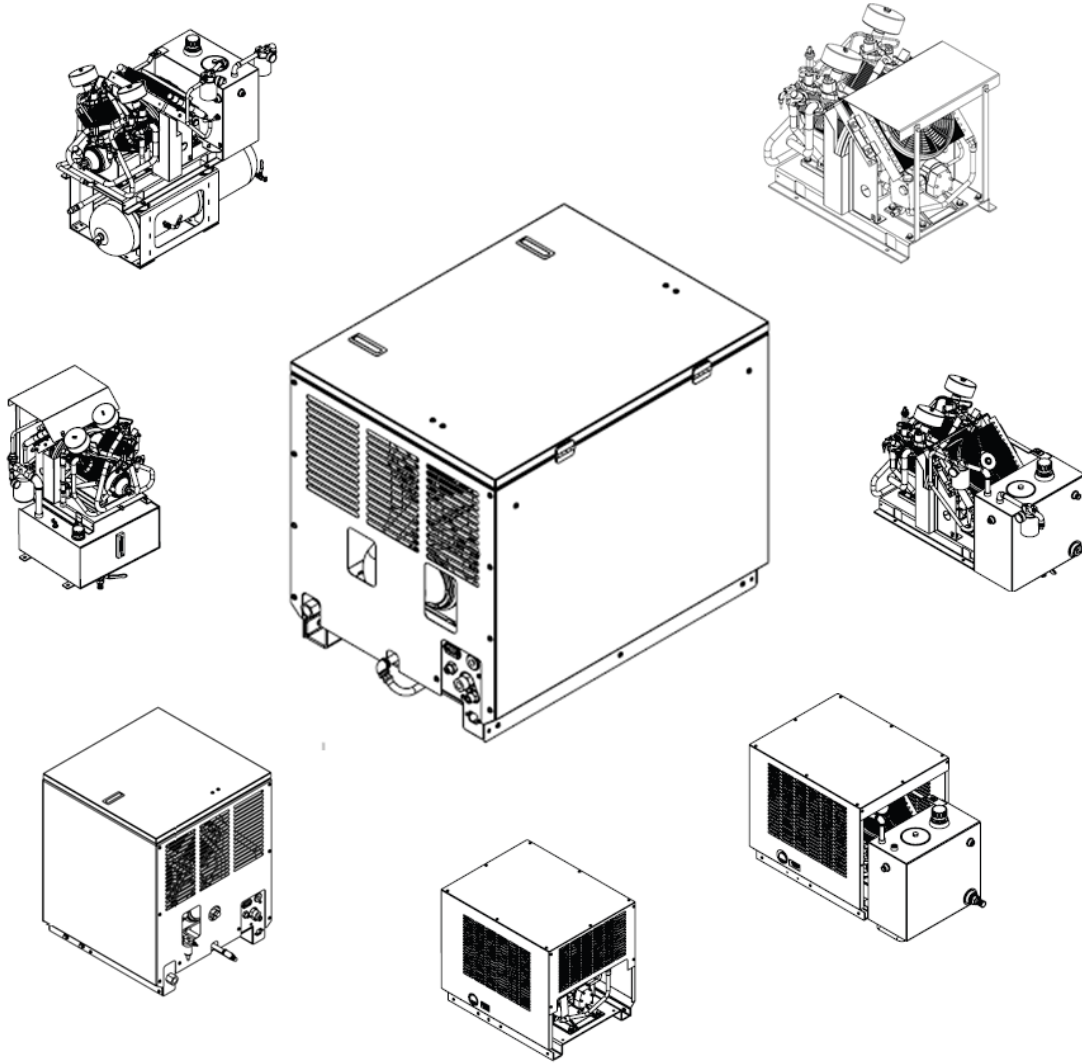




Model 46P Two-Stage Piston Compressor Manual

Specifications • Installation • Assembly



Stellar Industries Inc.
740 North State Street
PO Box 169
Garner, IA 50438
800-392-3015

www.stellarindustries.com

Subject to Change without Notification.
© 2023 Stellar Industries Inc

Rev 2
92624

P65 Warning / Serial Tag / Cold Weather

WARNING

Operating, maintaining, and servicing a Stellar product may expose you to chemicals including, but not limited to, engine exhaust, carbon monoxide, phthalates, and lead. These chemicals are known to the State of California to cause cancer and birth defects (or other reproductive harm). To keep your exposure to a minimum, be sure to avoid breathing exhaust and service your Stellar product in a well-ventilated area while wearing gloves or washing your hands frequently. For more information, go to www.P65Warnings.ca.gov/passenger-vehicle.



www.p65warnings.ca.gov

NOTICE

Cold Weather Performance

Although clear data on cold weather performance from every steel manufacturer is not available for all types and thicknesses of steel, Stellar Industries is confident that the weldments on our products will operate to 100% of their intended purpose to temperatures down to -40° F / C.

It is recommended if Stellar manufactured equipment needs to be used in temperatures below -40° F / C, the operator should pull the unit into a climate-controlled area and allow the weldments to warm up to and then maintain a temperature above this level.



MODEL

SERIAL NO.

DATE

PATENT / IP INFORMATION:
www.stellarindustries.com/ip

MADE IN THE USA
by the Employee Owners of Stellar Industries PN 112060

Table of Contents

Introduction	iv
Chapter 1 - Specifications	1
46P Direct Driven Dimensions	1
46P Belt Driven Dimensions	2
Chapter 2 - Installation.....	3
Component Installation.....	3
46P Electrical Schematic.....	4
Hydraulic System.....	5
Air System	5
Head Unloading System.....	6
Typical Hydraulic Circuit for Single-Section Pump	7
Typical Hydraulic Circuit for Tandem (Two Part) Pump	8
Typical Hydraulic Circuit for Compressor with Auxiliary Cooler	9
Chapter 3 - Assembly Drawings.....	11
46P Case Assembly - PN 70385	11
46P Direct Driven Assembly - PN 69645.....	12
46P Belt Driven Assembly - PN 76873	14
Crankcase Group	16
Crankshaft Group	17
Centrifugal Unloader Group.....	18
Piston/Rod Group – Low Pressure	19
Piston/Rod Group – High Pressure	20
Cylinder Group – with Head Unloaders	21
Tubing and Control Group – with Head Unloaders.....	22
Tubing and Control Group – with Head Unloaders.....	23

For Technical Questions, Information, Parts, or Warranty, Call Toll-Free at

800-321-3741

Hours: Monday - Friday, 8:00 a.m. - 5:00 p.m. CST

Or email at the following addresses:

Technical Questions, and Information:

service@stellarindustries.com

Order Parts:

parts@stellarindustries.com

Warranty Information:

warranty@stellarindustries.com

Introduction

Stellar Industries® Air Compressors are designed to provide safe and dependable service for a variety of operations. With proper use and maintenance, these air compressors will operate at peak performance for many years.

To promote this longevity, carefully study the information contained in this manual before putting the equipment into service. Though it is not intended to be a training manual for beginners, this manual should provide solid guidelines for the safe and proper usage of the air compressor.

Once you feel comfortable with the material contained in this manual, strive to exercise your knowledge as you safely operate and maintain the air compressor. This process is vital to the proper use of the unit.

A few notes on this manual:

A copy of this manual is provided with every air compressor and can be found in the hard plastic manual case that is installed on the chassis. A copy of this manual shall remain with the air compressor at all times.

Throughout the manual, three signal words will be used to bring attention to important items:

NOTICE

A NOTICE signal word indicates a practice not related to physical injury.

⚠ WARNING

A WARNING signal word indicates a hazardous situation which, if not avoided, could result in death or serious injury.

⚠ DANGER

A DANGER signal word indicates a hazardous situation which, if not avoided, will result in death or serious injury.

Information contained within this manual does not cover all maintenance, operating, or repair instructions pertinent to all possible situations. Please be aware that some sections of this manual contain information pertaining to Stellar Industries® manufactured air compressors in general and may or may not apply to your specific model.

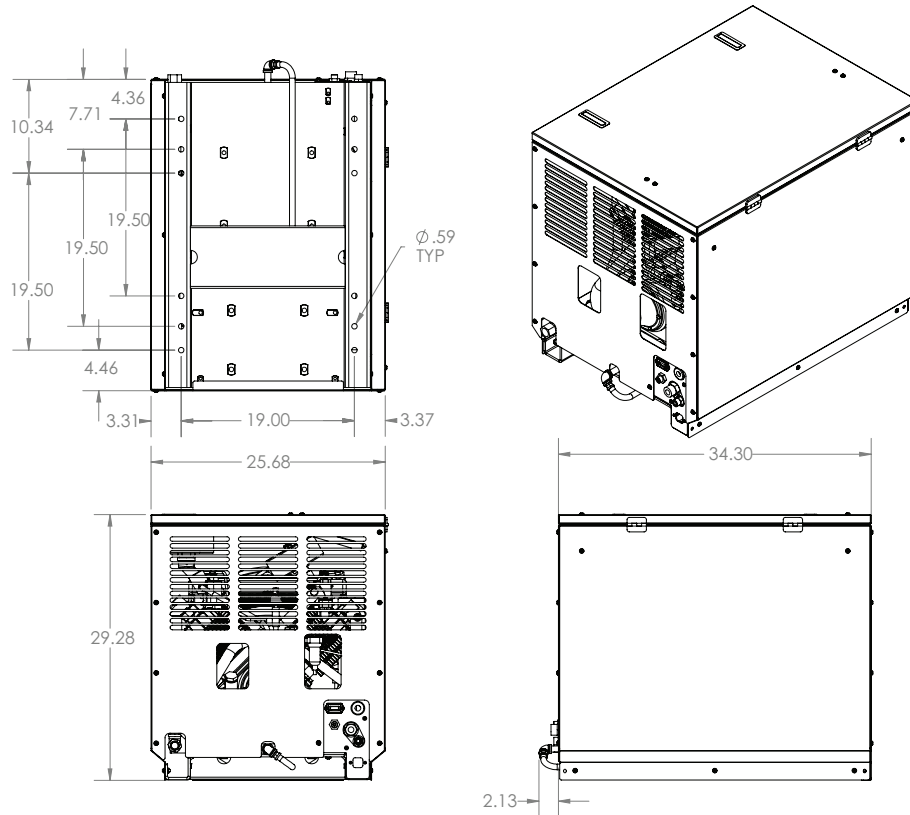
This manual is not binding. Stellar Industries reserves the right to change, at any time, any or all of the items, components, and parts deemed necessary for product improvement or commercial/production purposes. This right is kept with no requirement or obligation for immediate mandatory updating of this manual.

In closing:

If more information is required or technical assistance is needed, or if you feel that any part of this manual is unclear or incorrect, please contact the Stellar Industries Customer Service Department by phone at 800-392-3015 or email at service@stellarindustries.com.

Chapter 1 - Specifications

46P Direct Driven Dimensions

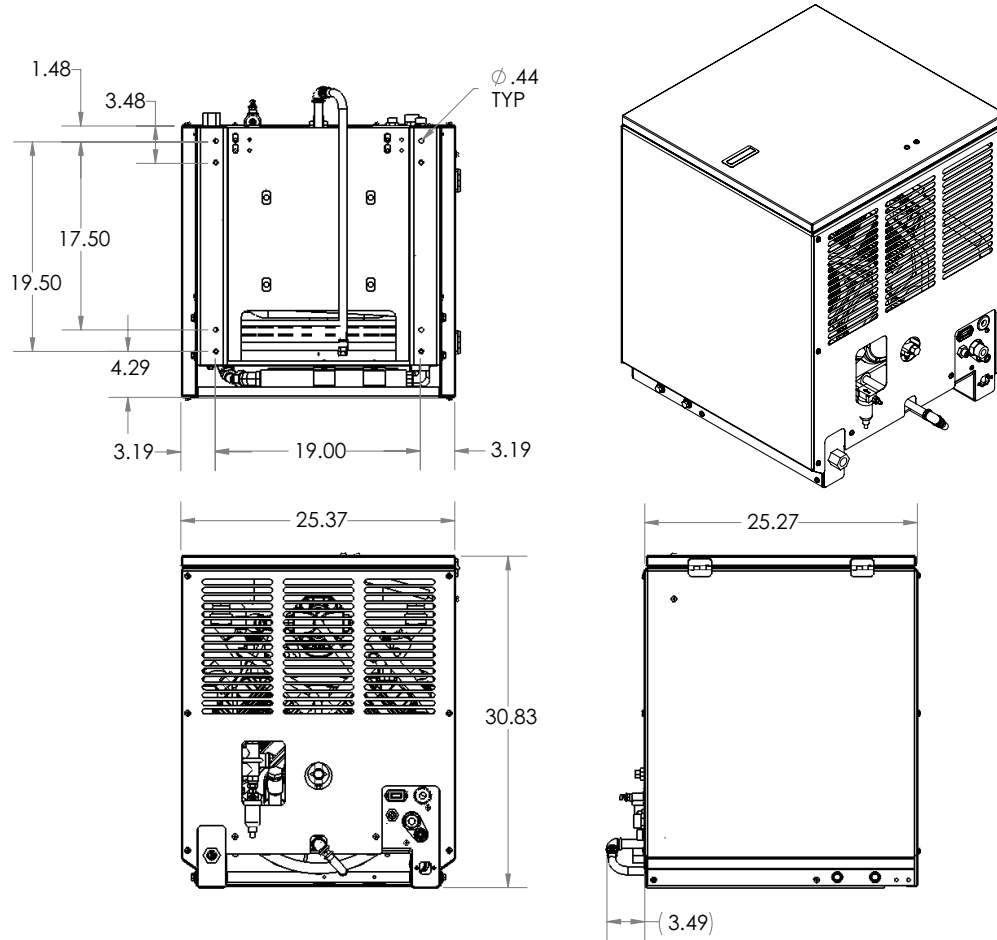


SPECIFICATIONS	46P Direct Driven
Hydraulic System	18 GPM @ 2500 PSI
Max Compressor Speed	1000 RPM
Hydraulic Operating Pressure	2500 PSI
Hydraulic Relief Pressure	3000 PSI
Max Working Pressure	175 PSI
Air Relief Valve	200 PSI
Air Delivery (At Max Speed)	46 CFM @ 100 PSI
Weight (Hydraulic Driven Asm)	470 lbs.
Weight (Air Pump Only)	220 lbs.
Dimensions (Length)	34.31"
Dimensions (Width)	25.79"
Dimensions (Height)	29.28"
Electrical	12V DC
Crankcase Oil Capacity	4 Quarts
Cooler Fan	800 CFM, 12 Volt (Pull)
Drive Type	Direct Driven

NOTICE

Duty cycle on Piston Compressors is 50:50 over 10 minutes.

46P Belt Driven Dimensions



SPECIFICATIONS	46P Belt Driven
Hydraulic System	15-16 GPM @ 2500 PSI
Max Compressor Speed	1000 RPM
Hydraulic Operating Pressure	2500 PSI
Hydraulic Relief Pressure	3000 PSI
Max Working Pressure	175 PSI
Air Relief Valve	200 PSI
Air Delivery (At Max Speed)	46 CFM @ 100 PSI
Weight (Hydraulic Driven Asm)	470 lbs.
Weight (Air Pump Only)	220 lbs.
Dimensions (Length)	25.28"
Dimensions (Width)	25.38"
Dimensions (Height)	30.88"
Electrical	12V DC
Crankcase Oil Capacity	4 Quarts
Cooler Fan	1450 CFM, Flywheel
Drive Type	Belt Driven

Chapter 2 - Installation

Component Installation

This section pertains to the installation of the air compressor, PTO, pump and other related items. The instructions are intended as a guide to assist you with particular installation. These instructions will provide only general information.

Pump Assembly:

The pump assembly may either be installed directly on the PTO or as an optional method, may be driven by a driveline from the PTO. Pump manufacturers provide specific installation information for their products and should be consulted if questions arise. Note: A dual or tandem hydraulic pump is recommended when additional hydraulically operated equipment are added to the hydraulic system.

PTO Assembly:

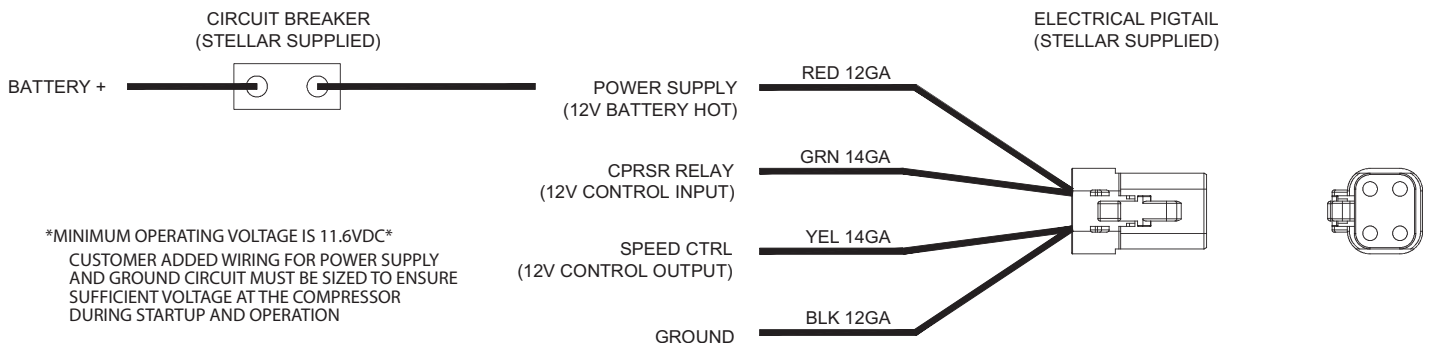
Check with the PTO manufacturer's representative for specific instructions regarding your particular make, model, and year of vehicle. As some trucks may require modification of the transmission cross member and the exhaust system, the manufacturer's instructions should be followed to ensure proper installation of the PTO.

Compressor Assembly:

Prepare the mounting location of the compressor by locating and drilling four (4) holes, 1/2" diameter as per the mounting pattern of the air compressor base. Using four (4) 3/8" x 1.25 GR-5 cap screws, 3/8" flat washer, and 3/8" nyloc nut, secure the compressor in place. The compressor is air cooled, and must have a clean supply of cooling air to the fan with minimum restrictions. Adequate space must be provided for proper circulation of air.

Electric Speed Control:

An optional electric or electronic speed control must be used to maintain proper operating speed of the air compressor. The engine speed control will automatically increase from idle to preset speed when engaged and decrease when disengaged.

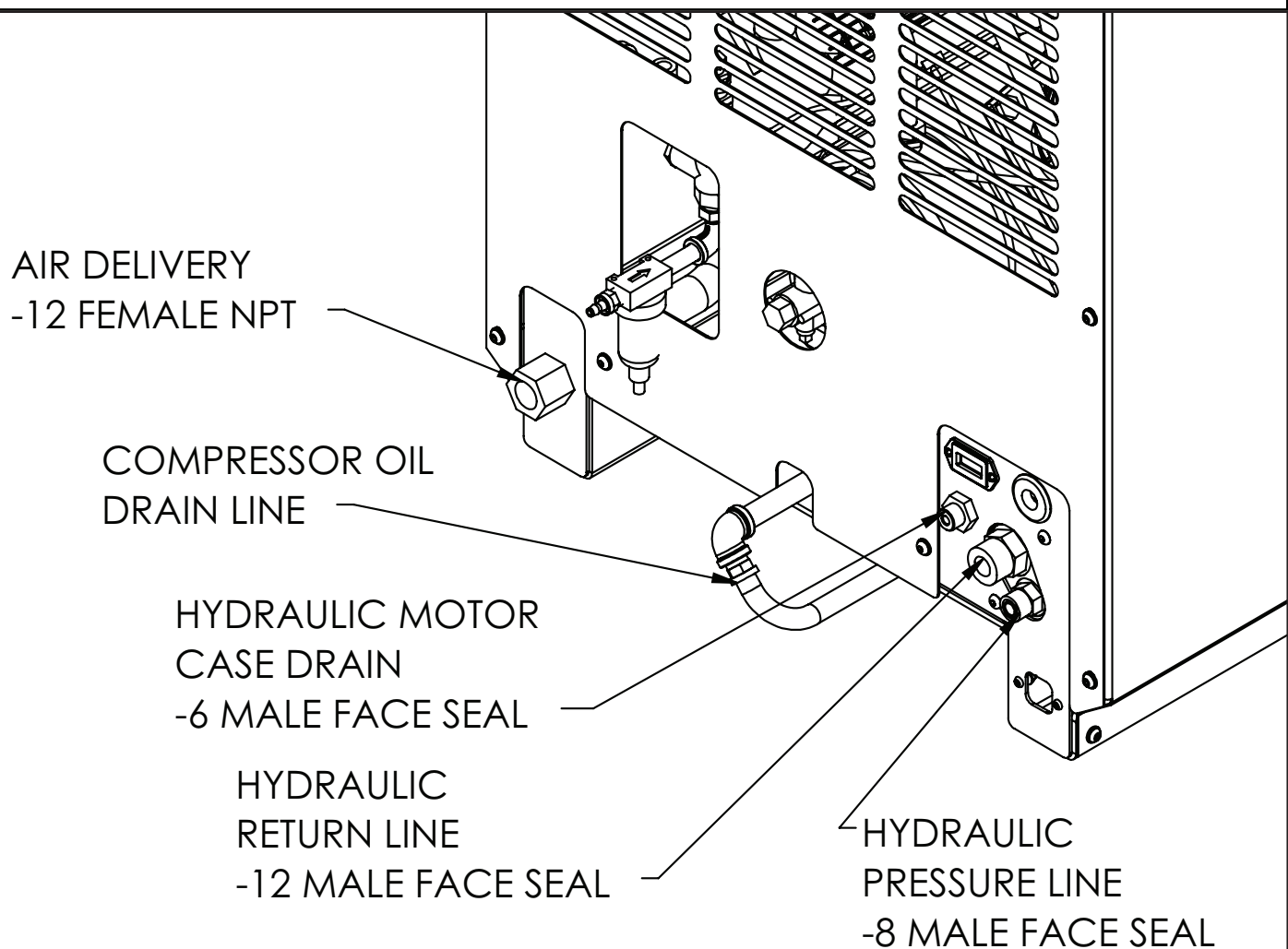


Hydraulic System

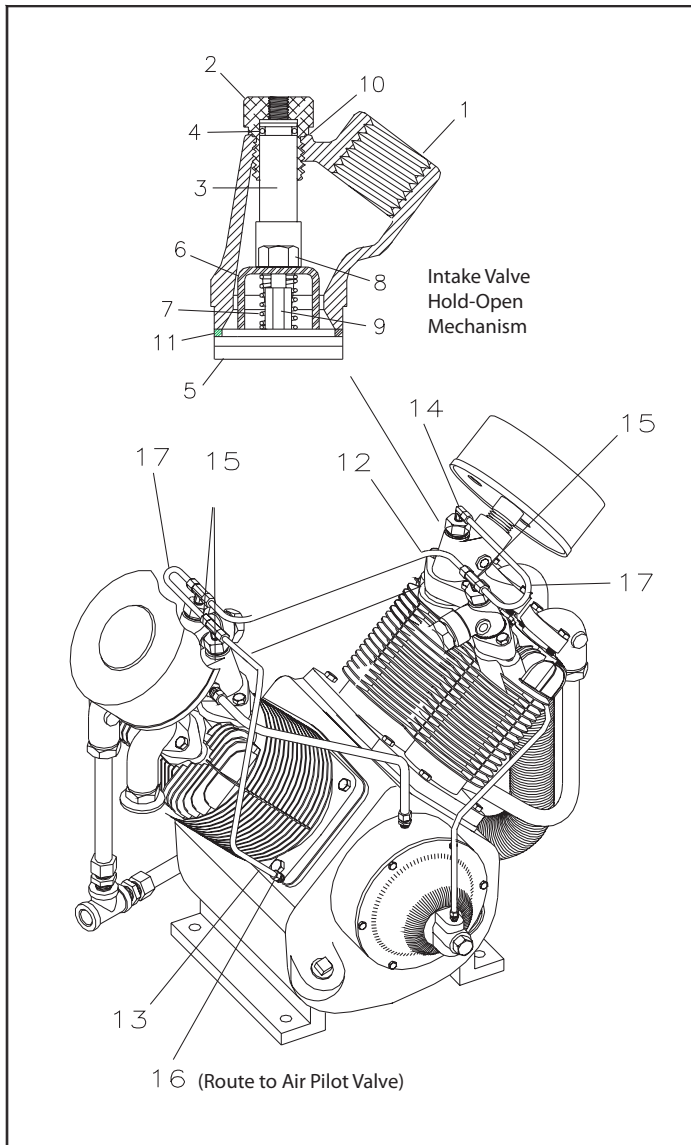
Installed on the compressor is a valve block assembly that controls the flow to the hydraulic motor. To this block, a 1/2" high-pressure hose must be attached. This hose comes from the hydraulic pumps pressure side. A 1-1/4" hydraulic suction hose must be installed from the hydraulic reservoir to the hydraulic pump. (See drawing above) Note: For compressors purchased without a reservoir a 3/4" minimum low-pressure return line is connected to the oil cooler outlet and is routed to the oil reservoir. The case drain line from the hydraulic motor is also routed to the oil reservoir. Stellar Industries recommends a sufficient sized reservoir be provided which includes the proper suction and return filters. The cooler on the compressor is designed and sized to cool the air compressor efficiently. An auxiliary oil cooler is required when additional hydraulically operated equipment are added to the hydraulic system. Pressure on the return line exceeding 200 PSI can and will cause damage to the filter, cooler, and components of the compressor hydraulic system.

Air System

Two (2) airlines must be routed to the air tank for proper installation. The main airline is routed from the check valve to the air tank using a 3/4"(200psi) air hose. This is the main delivery line and should be free from all obstructions. A 1/4" line is routed from the air pressure valve to the air tank. This line senses the pressure in the tank and will engage and disengage the compressor automatically.



Head Unloading System



LOW PRESSURE MANIFOLD ASSEMBLY

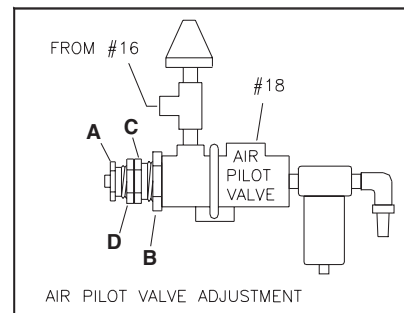
ITEM	PART No.	DESCRIPTION	QTY
01	7468	MANIFOLD, L.P. INTAKE	2
02	7481	CYLINDER	2
03	7482	PISTON	2
04	7483	O-RING	2
05	7471	VALVE ASSEMBLY	2
06	7444	CLAW	2
07	7445	SPRING	2
08	7491	NUT, HEX	2
09	7447	GUIDE STEM	2

HIGH PRESSURE MANIFOLD ASSEMBLY

ITEM	PART No.	DESCRIPTION	QTY
01	7469	MANIFOLD, H.P. INTAKE	2
02	7481	CYLINDER	2
03	7482	PISTON	2
04	7483	O-RING	2
05	7472	VALVE ASSEMBLY	2
06	7489	CLAW	2
07	7490	SPRING	2
08	7491	NUT, HEX	2
09	7492	GUIDE STEM	2
10	7493	GASKET	2
11	7494	GASKET	2

TUBING

ITEM	PART No.	DESCRIPTION	QTY
12	7495	INTERMEDIATE TUBE	1
13	7496	ACTUATING TUBE	1
14	7497	COMPRESSION FTG	1
15	7498	COMPRESSION TEE	3
16	7499	COMPRESSION FTG	1
17	7500	MANIFOLD TUBE	2
18	3853	AIR PILOT VALVE	1



Air Pilot Valve Adjustment

(See Air Pilot Valve Adjustment Detail)

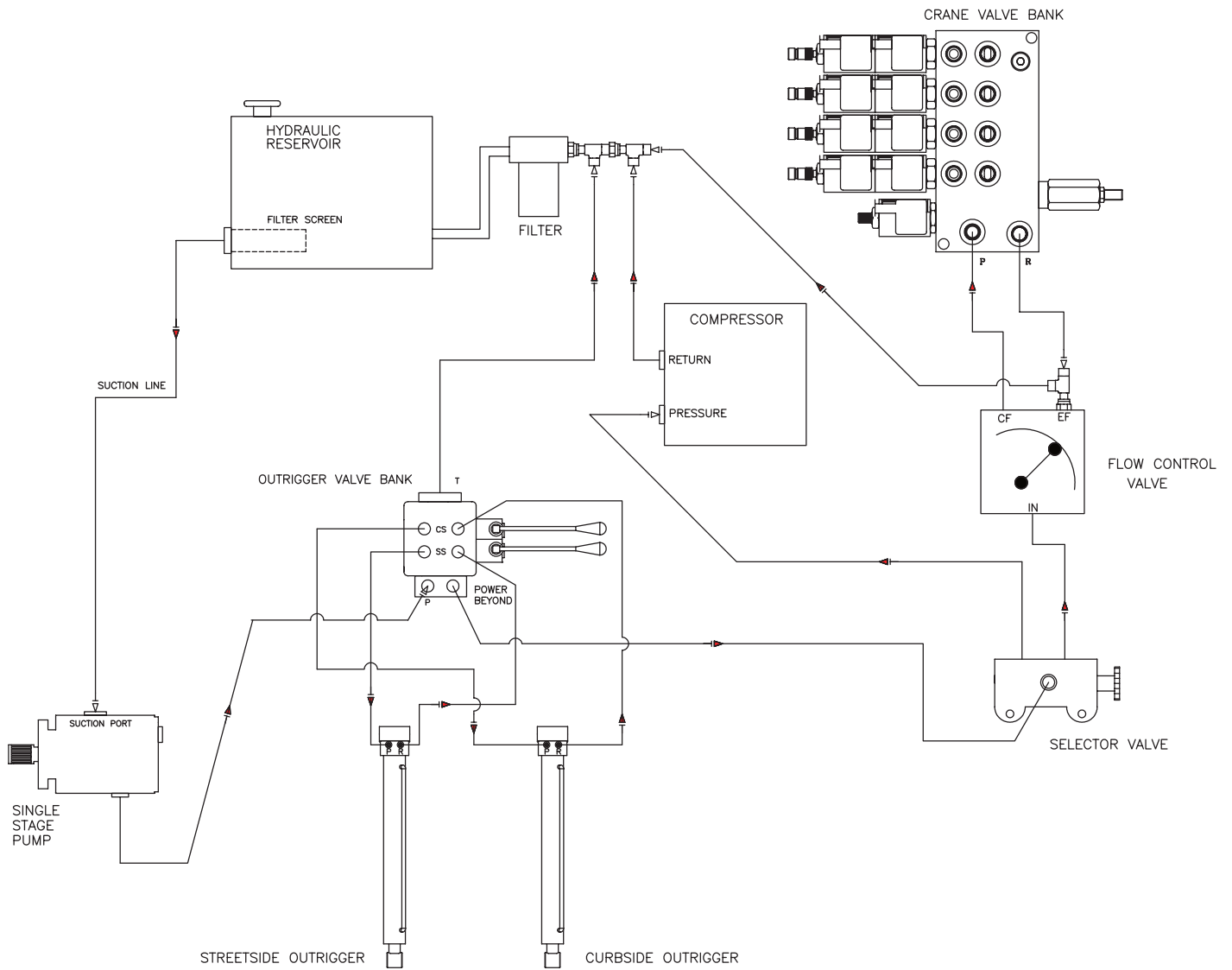
High Pressure Adjustment: Proceed with the following while the compressor is running.

- 1.) Loosen locknut (D) and back off several turns. Do not turn differential adjuster (C).
- 2.) Check reading on the tank pressure gauge. Set the compressor maximum pressure at 175 psi. Over pressurizing compressor will cause damage and void warranty. Turn threaded cap (A) clockwise to increase pressure or counterclockwise to decrease pressure.
- 3.) After pressure is set, tighten locknut (D). Be careful not to move the threaded cap (A).

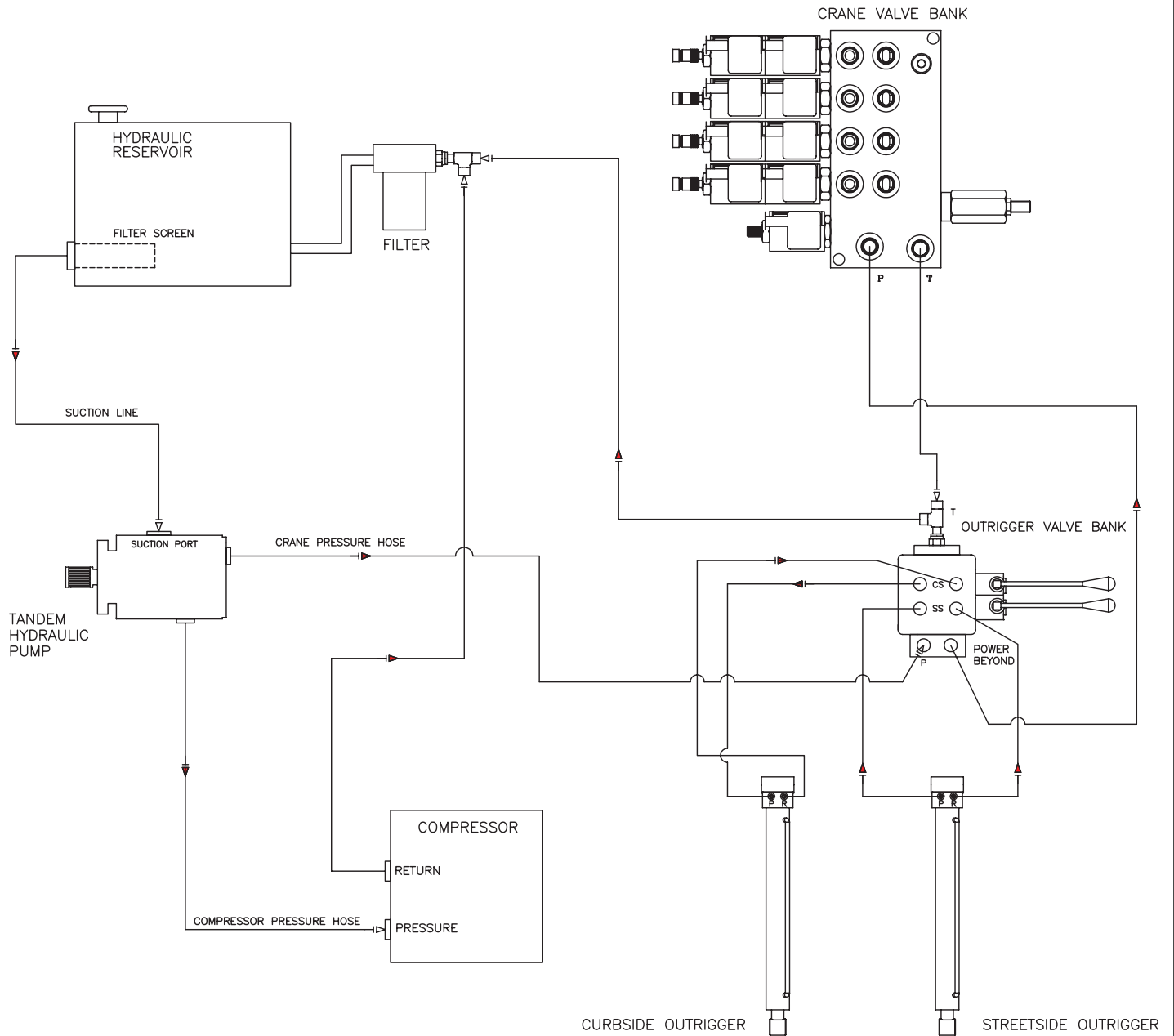
Differential Pressure Adjustment: Proceed with the following while the compressor is running.

- 1.) Loosen locknut (B) and back off several turns.
- 2.) Check reading on the tank pressure gauge. Set the pressure to 30 psi differential (unload at 175 psi, reload at 145 psi). Turn nut (C) clockwise to increase differential pressure or counterclockwise to decrease differential pressure.
- 3.) After pressure is set, tighten locknut (B). Be careful not to move nut (C)

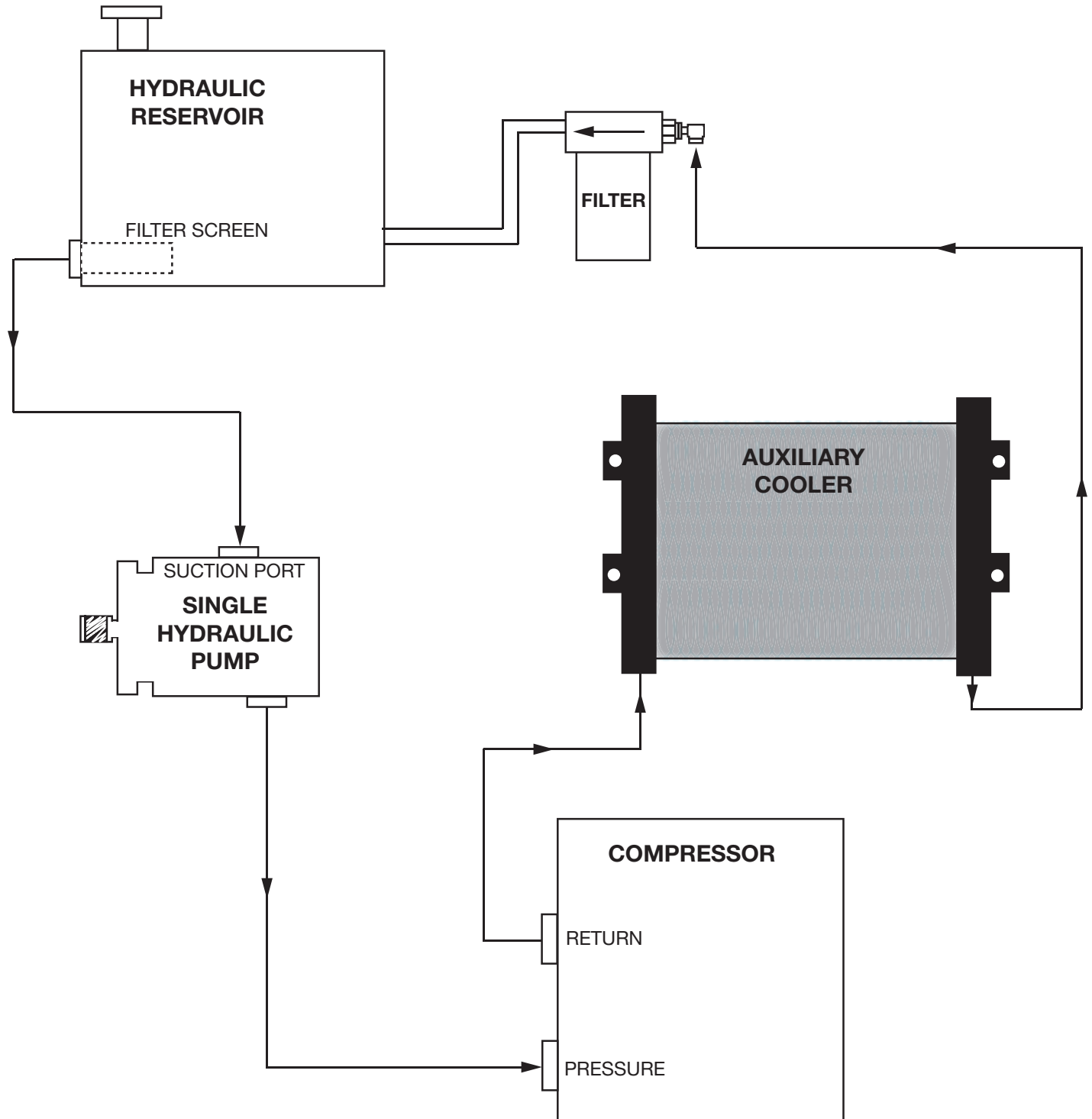
Typical Hydraulic Circuit for Single-Section Pump



Typical Hydraulic Circuit for Tandem (Two Part) Pump



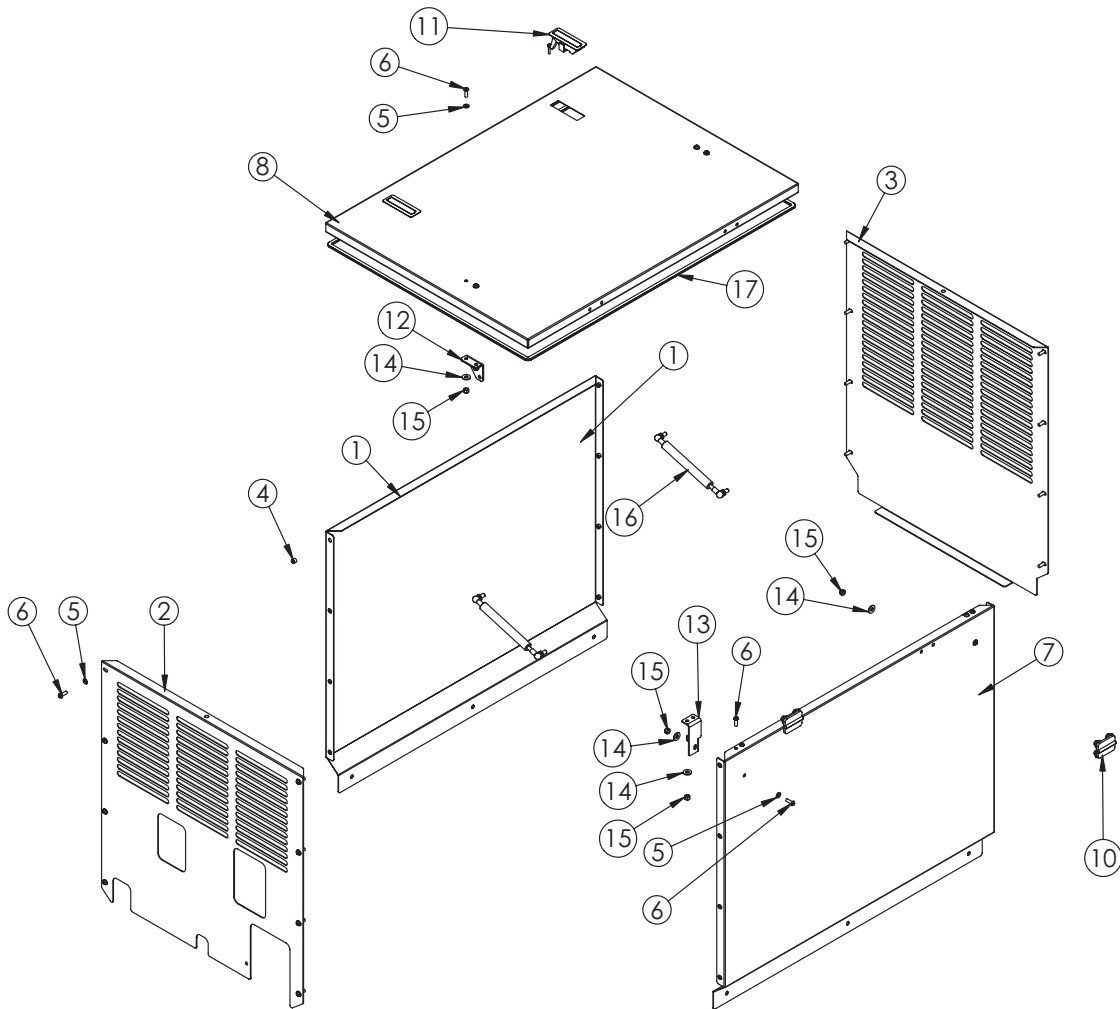
Typical Hydraulic Circuit for Compressor with Auxiliary Cooler



This page intentionally left blank.

Chapter 3 - Assembly Drawings

46P Case Assembly - PN 70385



ITEM	PART	DESCRIPTION	QTY.
1	65875	PANEL SIDE SHD66 SHROUD BH PC WHITE	1
2	69517	PANEL FRONT SHD66 SHROUD BULKHEAD PC WHITE	1
3	65877	PANEL REAR SHD66 SHROUD PC WHITE	1
4	19589	NUT SERT 0.25-20X0.38 OD	16
5	19592	WASHER 0.25 FLAT NYLON	22
6	C6021	CAP SCR 0.25-20X0.75 BTNHD SS	26
7	70473	PANEL SIDE RH SHD66 SHROUD BH V3 PC WHITE	1
8	70474	PANEL LID CPRSR SHD66 SHROUD PC WHITE	1
9	70379	HINGE ZINC BLK FLUSH SURFACE MNT DC-50-P8	1
10	70379	HINGE ZINC BLK FLUSH SURFACE MNT DC-50-P8	1
11	69101	LATCH SWING LEVER FLUSH TRIGGER 0.91-1.81	2
12	73654	BRKT LID GASPROP CPRSR SHROUD V2 PC WHITE	2
13	73653	BRKT LOWER GASPROP CPRSR SHROUD V2 PC WHITE	2
14	D0917	WASHER 0.25 FLAT SS	18
15	0333	NUT 0.25-20 HHGR5 NYLOC	18
16	70475	GAS SPRING 7.50-12.00 60# FORCE	2
17	73724	WEATHERSTRIP RIBBED 0.38X0.13X117.00	1

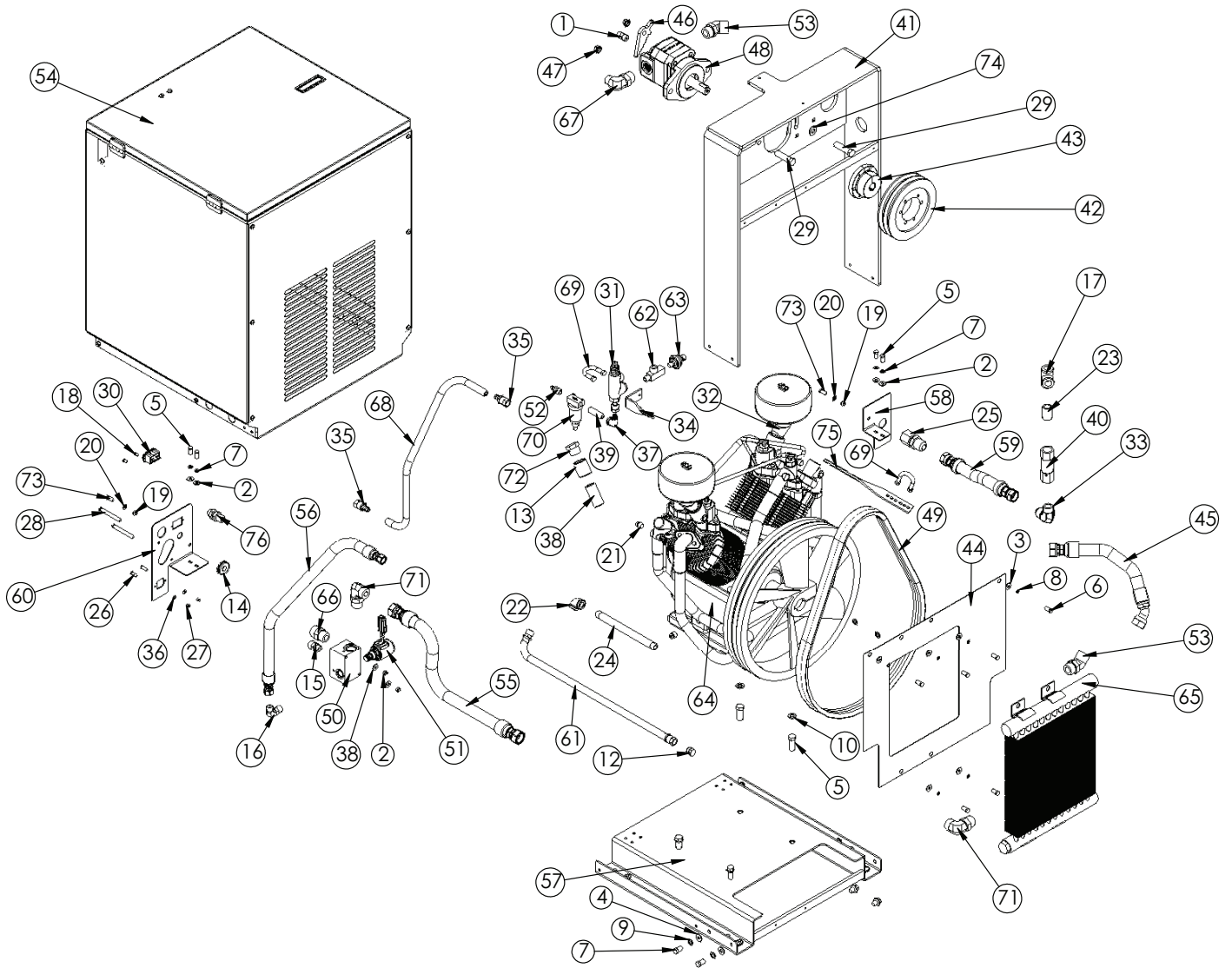
46P Direct Driven Assembly Bill - PN 69645

PN 69645

ITEM	PART	DESCRIPTION	QTY.
1	0279	FTG 6-6 MFS-MORB STRAIGHT	1
2	0333	NUT 0.25-20 HHGR5 NYLOC	2
3	0335	CAP SCR 0.38-16X1.25 HHGR5	2
4	0340	WASHER 0.25 USS FLAT	4
5	0347	NUT 0.38-16 HH NYLOC	8
6	0351	CAP SCR 0.38-16X1.00 HHGR5	10
7	0359	CAP SCR 0.50-13X1.50 HHGR5	8
8	0479	CAP SCR 0.25-20X0.75 HHGR5	2
9	0521	WASHER 0.25 LOCK	2
10	0523	WASHER 0.38 LOCK	4
11	0525	WASHER 0.50 LOCK	10
12	0560	FTG 6 MFS PLUG	1
13	10659	CPLR 0.75 BRASS	2
14	12813	GROMMET 1.50ODX1.25GDXX0.13X0.63ID	1
15	1554	FTG 8-8 MFS-MORB STRAIGHT	1
16	1556	FTG 8-8 MFS-MAORB 90	1
17	18611	SCREW #6-32X0.38 HH MACH SELF TAP	2
18	19589	NUT SERT 0.25-20X0.38 OD	1
19	19592	WASHER 0.25 FLAT NYLON	7
20	19645	BRKT MOTOR MOUNT 19645 POWDERCOAT	1
21	20330	FTG 0.38-0.25 FF HEX NIPPLE	1
22	20452	FTG 6-6 FP-FP ELBOW 90 BRASS	1
23	20458	FTG 6-6X3.00 MP-MP NIPPLE STRAIGHT BRASS	1
24	20884	FTG 12-12X6.00 MP-MP NIPPLE STRAIGHT BRASS	1
25	22183	SCREW #8-32X0.75 BTNHD SS	2
26	22186	NUT #8-32 HH NYLOC SS	2
27	24304	CAP SCR 0.25-20X3.00 BTNHD SS	2
28	26025	CAP SCR 0.50-13X2.25 HHGR5	2
29	28855	HOUR METER 12VDC TST 180-1911	1
30	3854	FTG ST L 45 DEG 44-205	1
31	4581	FTG 12-12X4.00 MP-MP NIPPLE STRAIGHT BRASS	3
32	4703	BRKT UNLOADER VALVE MNT SHD66DD	1
33	5290	WASHER #8 SAE FLAT	2
34	5418	ST EL 0.25 90 DEG BRASS 44-161	1
35	5480	VALVE CHECK 0.75 STANDARD	1
36	57195	MOTOR HYD RSB04K-Y4500-A 4.0 CID	1
37	65746	HOSE 0.75(200PSI)-12FFSS SHORT-12FFSS 90 SHORT 11.5 OAL	1

ITEM	PART	DESCRIPTION	QTY.
38	65873	BASE WLDMT SHD66DD ENCLOSURE BULKHD	1
39	69513	MANIFOLD CPRSR SHD66 BULKHEAD	1
40	69514	TUBE ASM 0.50 PRESSURE SHD66 BULKHEAD ZC	1
41	70144	VALVE SOLND W/ RELIEF 12V SVRV10-26B-0-N-12DW	1
42	70385	SHROUD ASM SHD66 BULKHEAD V3	1
43	71406	FTG HOSE 4-4 PL-MP STRAIGHT BRASS	1
44	7351	FTG ST TH ELBOW 45 DEG 12V5OLO	2
45	77504	PANEL BULKHEAD 46P DIRECT DRIVE PC BLACK	1
46	78190	HOSE 0.38(200PSI)-6PL SHORT-6PL STRAIGHT-23.SCL	1
47	8277	FTG ST L 0.25 MNPT/0.125 FNPT SPL	1
48	C0081	CLAMP 0.50 BLK VINYL	1
49	C0864	SWITCH PRES HOBBS	1
50	C1129	COOLER OIL 24 GPM MAX FLOW	1
51	C1180	FTG 8-12 MFS-MORB STRAIGHT	1
52	C2142	FTG 12-12 MFS-MORB STRAIGHT	1
53	C5662	FILTER METAL BOWL 0.25	1
54	C5968	FTG 12-12 MFS-MAORB 90	2
55	C6021	CAP SCR 0.25-20X0.75 BTNHD SS	7
56	C6106	NUT 0.50-13 HHGR5 NYLOC	2
57	C6353	WASHER 0.38 FLAT GR8	8
58	D0786	BRKT WLDMT COOLER MNT LH SHD66DD	1
59	D0790	WASHER 0.50 FLAT GR8	12
60	D0791	COUPG 1/4 KW L150-1.00	1
61	D0792	COUPG 3/8 KW L150-1.75	1
62	D0793	COUPG SPIDER L150-U BLUE URETHANE	1
63	D0824	BRKT WLDMT COOLER MNT RH SHD66DD	1
64	D0840	FAN 12.00 PUSH 12 VOLT SPL 301003	1
65	D0856	BRKT LIFT SHD66DD	1
66	D1266	FTG 12-12 FP-FP 90 BRASS	1
67	D1299	FTG 6-6 MFS-MFS BULKHEAD UNION	1
68	D1346	CPRSR CHMP R30DHU SPECIAL	1
69	98698	TUBE ASM 0.38 DRAIN 46P BULKHEAD ZC	1
70	98699	TUBE ASM 0.75 RETURN 46P BULKHEAD ZC	1
71	20327	PLUG 0.75 NPT SQ HD BRASS	1
72	D0178	WASHER #10 SAE FLAT	4
73	26034	NUT #10-24 HH NYLOC	4

46P Belt Driven Assembly - PN 76873

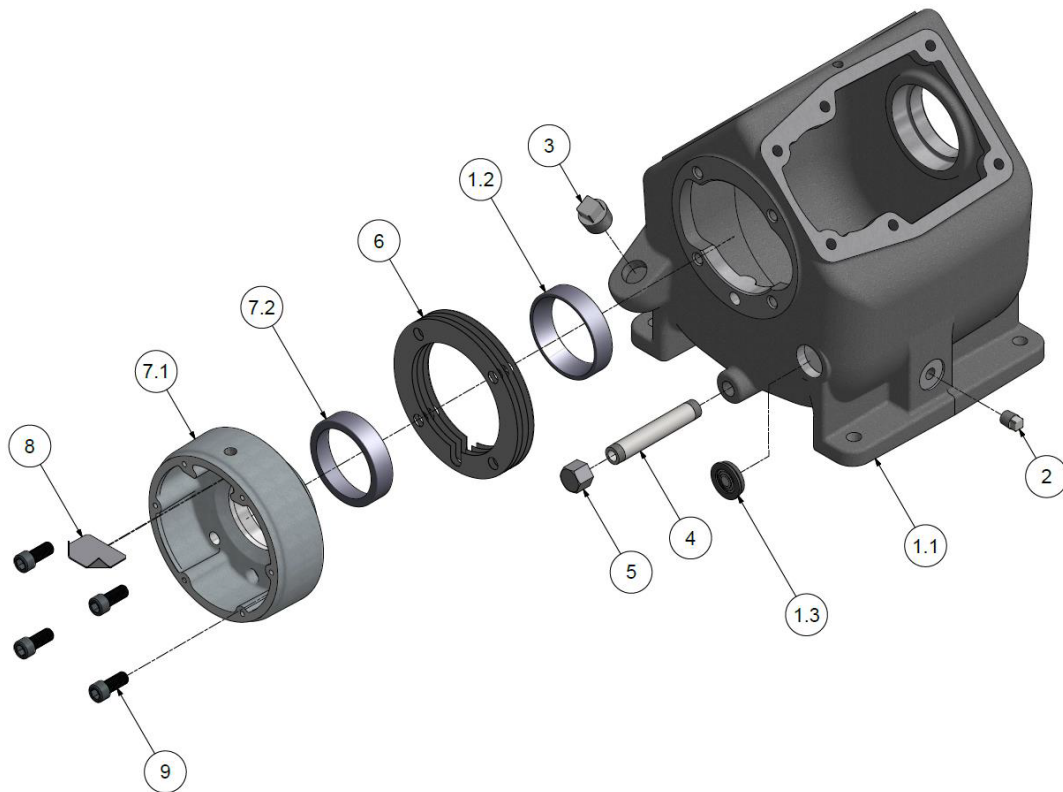


46P Belt Driven Assembly Bill - PN 76873

PN 76873

ITEM	PART No.	DESCRIPTION	QTY.	ITEM	PART No.	DESCRIPTION	QTY.
01	0279	FTG 6-6 MFS-MORB STRAIGHT	1	39	5465	FTG 4-4X2.00 MP-MP NIPPLE STRAIGHT BRASS	1
02	0333	NUT 0.25-20 HHGR5 NYLOC	2	40	5480	VALVE CHECK 0.75 STANDARD	1
03	0340	WASHER 0.25 USS FLAT	12	41	57697	SUPPORT WLDMT CPRSR MOTOR MT SHD66 BELT	1
04	0343	WASHER 0.31 USS FLAT	4	42	59533	PULLEY SHEAVE 2 GROOVE 2B70SK	1
05	0359	CAP SCR 0.50-13X1.50 HHGR5	4	43	60018	BUSHING 0.875 SK 1/4 KEYWAY	1
06	0479	CAP SCR 0.25-20X0.75 HHGR5	10	44	60403	FAN GUARD SHD66 BELT DRIVE PC WHITE	1
07	0492	CAP SCR 0.38-16X0.75 HHGR5	4	45	61466	HOSE 0.75(471TC-JC-J7-12-12-11.75)	1
08	0521	WASHER 0.25 LOCK	10	46	61468	LATCH PLATE HYD MOTOR POSITIONER PC WHITE	1
09	0523	WASHER 0.38 LOCK	4	47	61470	NUT 0.50-13 HHGR8 DISC LOCK	2
10	0525	WASHER 0.50 LOCK	4	48	61794	MOTOR HYD M124A885UQSPLDA10-55XL	1
11	0549	FTG 6-4 MP-FP REDUCER BUSHING	1	49	62684	BELT GATES POWERBAND 2/B68	1
12	0560	FTG 6 MFS PLUG	1	50	69513	MANIFOLD CPRSR SHD66 BULKHEAD	1
13	10659	CPLR 0.75 BRASS	1	51	70144	VLV SOLND W/ RELIEF 12V SVRV10-26B-0-N-12DW	1
14	12813	GROMMET 1.25ODX0.125X0.625ID	1	52	71406	FTG HOSE 4-4 PL-MP STRAIGHT BRASS	1
15	1554	FTG 8-8 MFS-MORB STRAIGHT	1	53	7351	FTG ST TH ELBOW 45 DEG 12V5OLO	2
16	1556	FTG 8-8 MFS-MAORB 90	1	54	76870	SHROUD ASM SHD66 BELT	1
17	16711	FTG 0.75-TEE BRASS 80101-12	1	55	76874	HOSE 0.75(200PSI)-12FFSS SHRT-12FFSS SHRT-21.75CL	1
18	18611	SCREW #6-32X0.38 HH MACH SELF TAP	2	56	76905	HOSE 0.50(3000PSI)-8FFSS SHRT-8FFSS SHRT-24.75CL	1
19	19589	NUT SERT 0.25-20X0.38 OD	2	57	76907	WLDMT CPRSR MNT SHD66BD PC BLACK	1
20	19592	WASHER 0.25 FLAT NYLON	2	58	76908	BRKT BULKHEAD AIR MOUNT SHD66BD PC WHITE	1
21	20326	PLUG 0.25 NPT SQ HD BRASS	4	59	76909	HOSE STEAM 0.75-12JS SHRT-12FFSS SHRT-7.5CL STST	1
22	20452	FTG 6-6 FP-FP ELBOW 90 BRASS	1	60	77505	PANEL BULKHEAD 46P BELT DRIVE PC WHITE	1
23	20453	FTG 12-12X1.50 MP-MP NIPPLE STRAIGHT BRASS	1	61	78190	HOSE 0.38(200PSI)-6PL SHRT-6PL STRAIGHT-23.5CL	1
24	20459	NIPPLE 0.38X8.00 BRASS	1	62	8277	FTG ST L 0.25 MNPT/0.125 FNPT SPL	1
25	21393	FTG 12-12 FP-MJ BULKHEAD STRAIGHT	1	63	C0864	SWITCH PRES HOBBS	1
26	22183	CAP SCR #8-32X0.75 BTNHD SS	2	64	C1087	CPRSR CHMP R30DHU SPECIAL	1
27	22186	NUT #8-32 HH NYLOC SS	2	65	C1129	COOLER OIL	1
28	24304	CAP SCR 0.25-20X3.00 BTNHD SS	2	66	C2142	FTG 12-12 MFS-MORB STRAIGHT	1
29	26025	CAP SCR 0.50-13X2.25 HHGR5	2	67	C4227	FTG 8-12 MFS-MAORB 90	1
30	28855	HOUR METER 12VDC TST 180-1911	1	68	C4676	HOSE 0.38 X 11FT LONG	1
31	3853	VALVE PILOT 145/175 PSI RCL-S	1	69	C4941	CLAMP MUFFLER 1 1/8	2
32	3854	FTG ST L 45 DEG 44-205	2	70	C5662	FILTER METAL BOWL 0.25	1
33	3864	FTG 12-12 MJ-MP 90	1	71	C5968	FTG 12-12 MFS-MAORB 90	2
34	4703	BRKT UNLOADER VALVE MNT SHD66DD	1	72	C6015	FTG 0.75 PLUG 12-P5ON	1
35	52474	FTG HOSE 6-6 FFSS-PL SHORT	2	73	C6021	CAP SCR 0.25-20X0.75 BTNHD SS	2
36	5290	WASHER #8 SAE FLAT ZP	2	74	D0790	WASHER 0.50 SAE FLAT YELLOW GR8	1
37	5418	ST EL 0.25 90 DEG BRASS 44-161	1	75	D0847	BRKT 11.00 TWIST 45 DEG SHD66DD	1
38	5425	FTG 12-12X2.50 MP-MP NIPPLE STRAIGHT BRASS	1	76	D1299	FTG 6-6 MFS-MFS BULKHEAD UNION	1

Crankcase Group



CRANKCASE GROUP

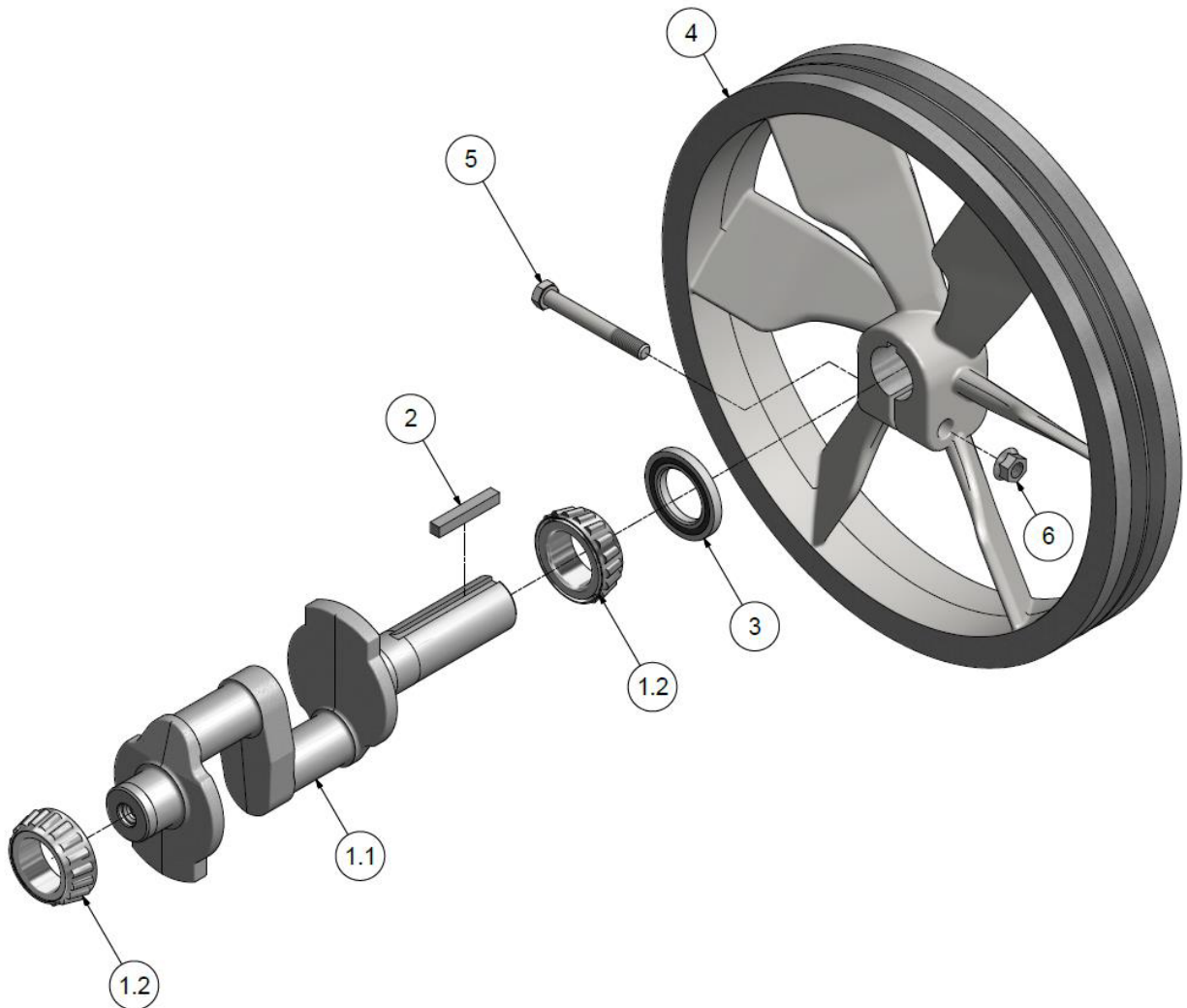
ITEM	PART No.	DESCRIPTION	QTY.	STELLAR P/N
1.1	M1898	CRANKCASE	1	6082
1.2	NR2016*	MAIN BEARING, CUP	1	-
1.3	RE714	OIL LEVEL GAUGE	1	4561
2	64AA5	PLUG	1	-
3	64A5	PLUG	1	-
4	M492	NIPPLE	1	6085
5	M461	CAP	1	6086
6	SE3030*	GASKET, 0.032	1	-
6	SE3030A*	GASKET, 0.005	1	-
6	SE3030B*	GASKET, 0.010	1	-
6	SE3030C*	GASKET, 0.015	1	-
7.1	P12273C	GOVERNOR HOUSING	1	124237
7.2	NR2016*	MAIN BEARING, CUP	1	-
8	P12381A	PLATE, GOVERNOR BAFFLE	1	-
9	M3690	SCREW (torque @ 550 in-lbs)	4	-

*not sold separately – see repair parts

REPAIR PARTS

1.2, 7.2	Z8981	MAIN BEARING	2	7429
6	Z3030	GOVERNOR HOUSING GASKET SET	1	6087
-	Z10887	COMPRESSOR GASKET SET (excludes valve gaskets)	1	124238

Crankshaft Group



CRANKSHAFT GROUP

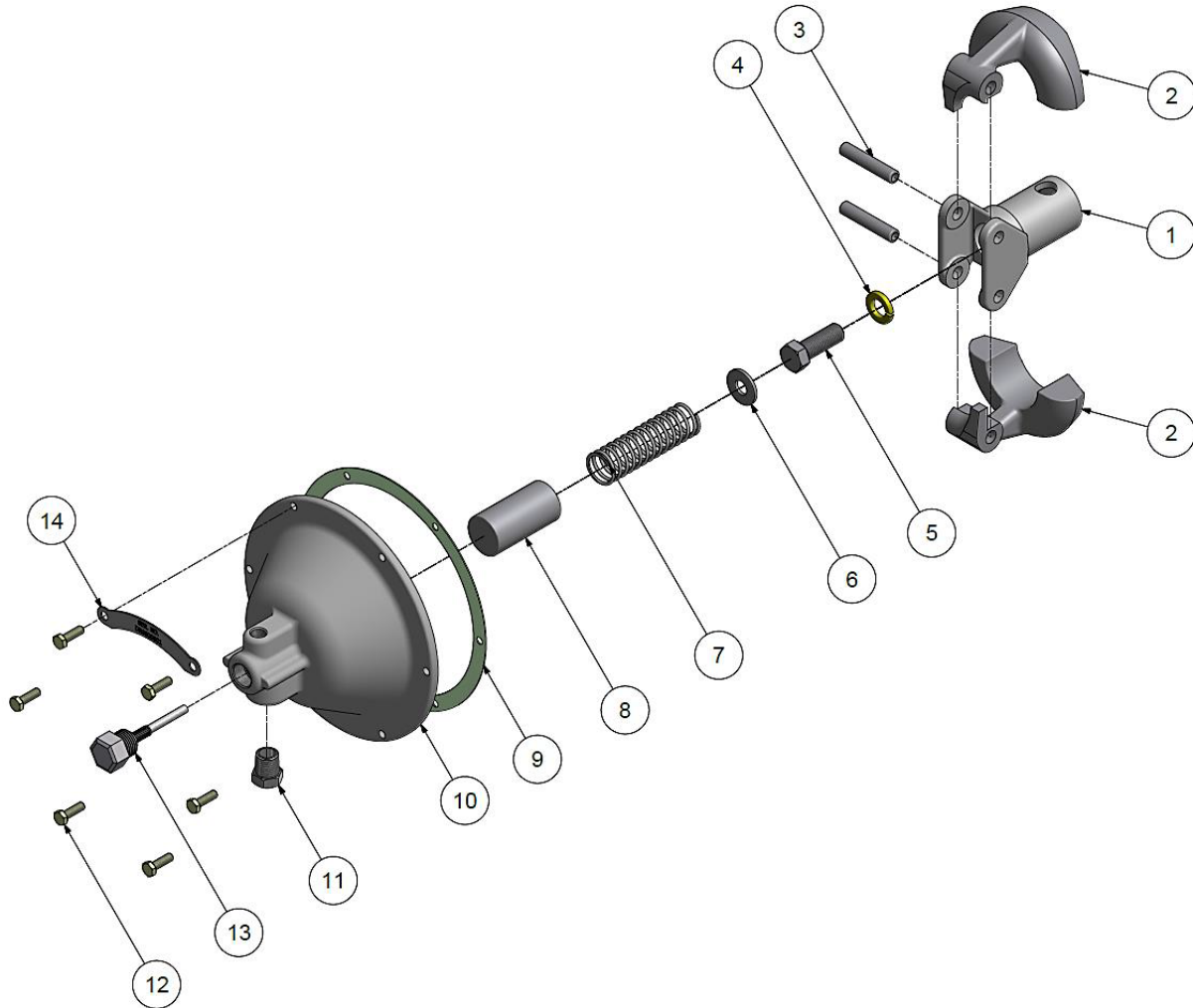
ITEM	PART No.	DESCRIPTION	QTY.	STELLAR P/N
1.1	P12414B	CRANKSHAFT	1	7428
1.2	P12413A*	MAIN BEARING, CONE & ROLLER	2	-
2	RE208	KEY	1	6079
3	OSN36A	OIL SEAL	1	7430
4	NR367B	FLYWHEEL	1	D0827
5	655EE160	SCREW (torque @ 600 in-lbs)	1	-
6	M2955	NUT	1	-

*not sold separately – see repair parts

REPAIR PARTS

1.2	Z8981	MAIN BEARING	1	7429
-----	-------	--------------	---	------

Centrifugal Unloader Group



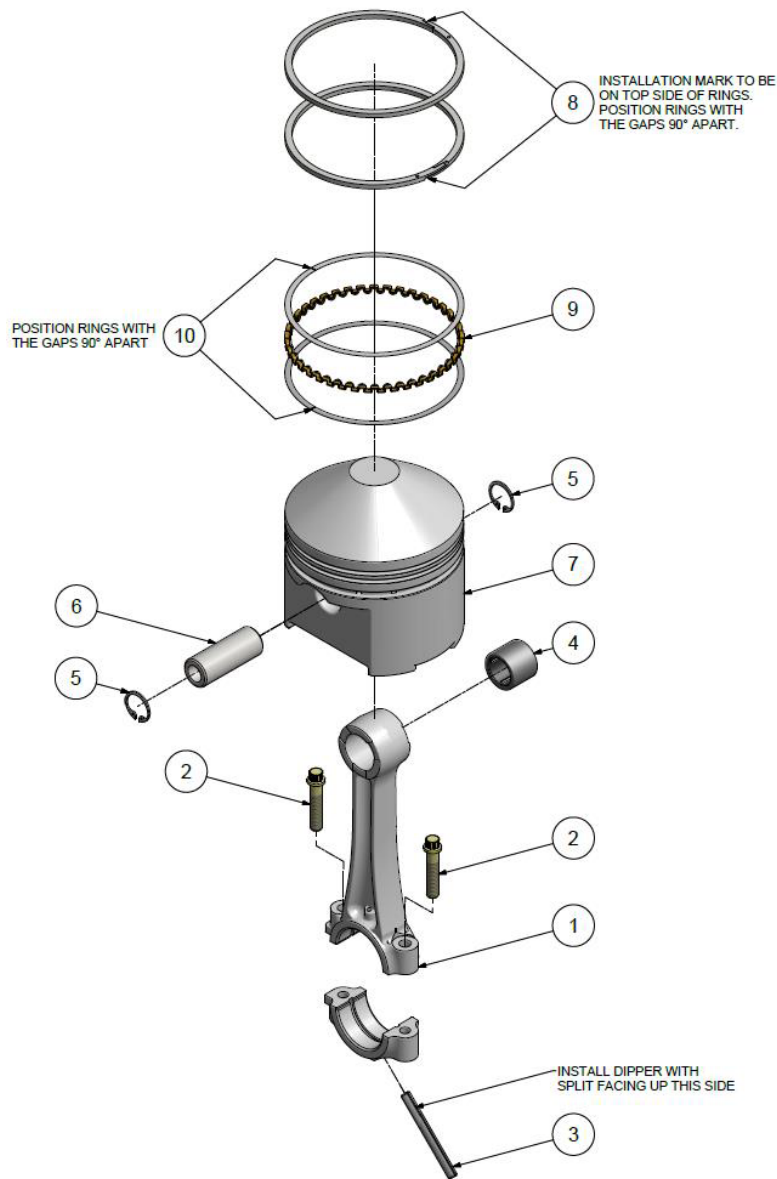
CENTRIFUGAL UNLOADER GROUP

ITEM	PART No.	DESCRIPTION	QTY.	STELLAR P/N
1	SE583B	SPINDLE,GOVERNOR	1	6096
2	SE582B	WEIGHT,GOVERNOR	2	6097
3	SE592A	PIN, GOVERNOR WEIGHT	2	6098
4	95B4Z	WASHER-LOCK	1	-
5	M2345	SCREW (torque @ 470 in-lbs)	1	-
6	M912A	SPACER,CENTRIFUGAL UNLOADER	1	7413
7	SE590	SPRING,GOVERNOR	1	7414
8	SE587	SLEEVE, SPRING	1	7415
9	SE1489	GASKET,GOVERNOR COVER	1	6094
10	RE10100A	GOVERNOR HOUSING COVER	1	124239
11	Z4593	BREATHER	1	7417
12	M3473	SCREW	6	7418
13	Z12414A	RELEASE VALVE KIT	1	C0896
14	M3658	SERIAL NUMBER PLATE	1	-

REPAIR PARTS

-	Z10887	COMPRESSOR GASKET SET (excludes valve gaskets)	1	124238
---	--------	--	---	--------

Piston/Rod Group – Low Pressure



Piston/Rod Group – Low Pressure (2 per compressor)

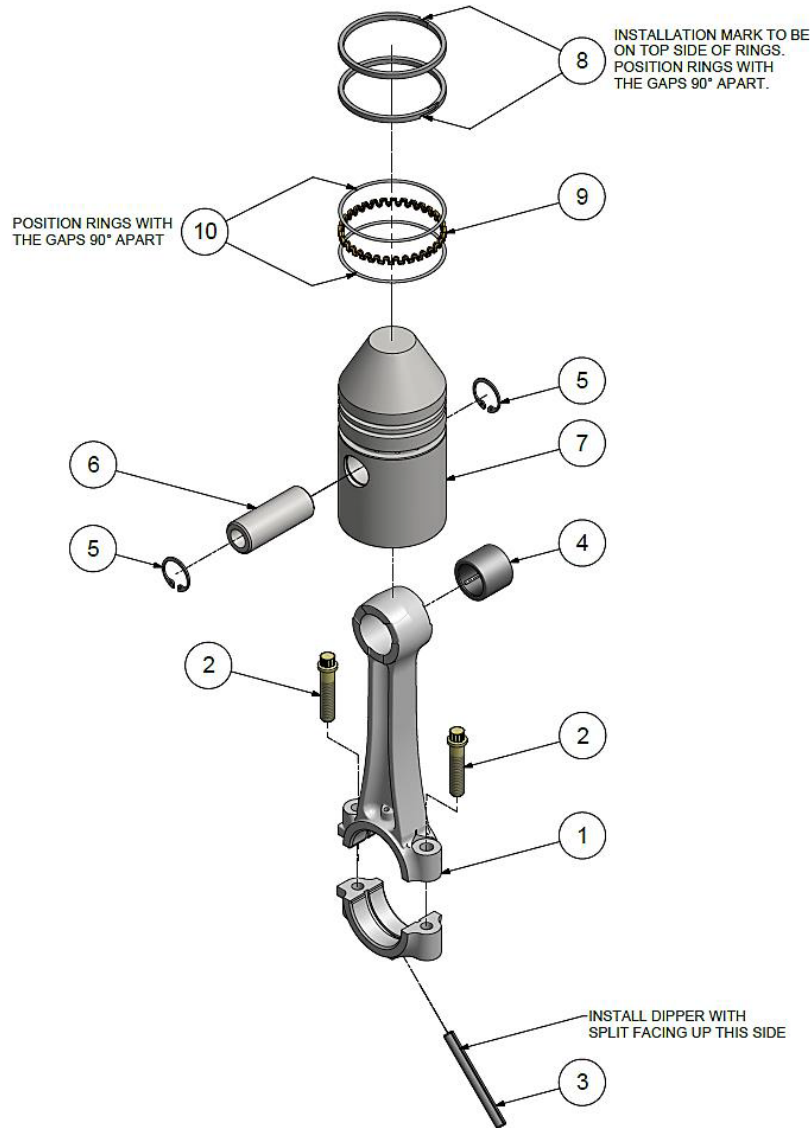
ITEM	PART No.	DESCRIPTION	QTY.	STELLAR P/N
1	M1584*	CONNECTING ROD	1	-
2	M1583	SCREW (torque @ 230 in-lbs)	2	7433
3	R1024	OIL DIPPER	1	7432
4	R1037	BEARING, WRIST PIN	1	7434
5	R10102	RING, RETAINING	2	7438
6	R1021	PIN, PISTON	1	7437
7	R154	PISTON	1	-
8	P02788A*	RING, PISTON	2	-
9	RE1410D1*	RING, EXPANDER	1	-
10	RE1410D2*	RING, RAIL	2	-

*not sold separately – see repair parts

REPAIR PARTS

1-4	Z752	CONNECTING ROD ASSEMBLY KIT	2	7431
5-7	ZR154	PISTON KIT, LOW PRESSURE WITH PIN	2	7435
8-10	Z798	RING SET, LOW PRESSURE	2	-
5-10	Z9101	PISTON & RING KIT, LOW PRESSURE	2	-
-	Z9085	COMPLETE RING SET, HIGH & LOW PRESSURE x 2	1	124284

Piston/Rod Group – High Pressure



Piston/Rod Group – High Pressure (2 per compressor)

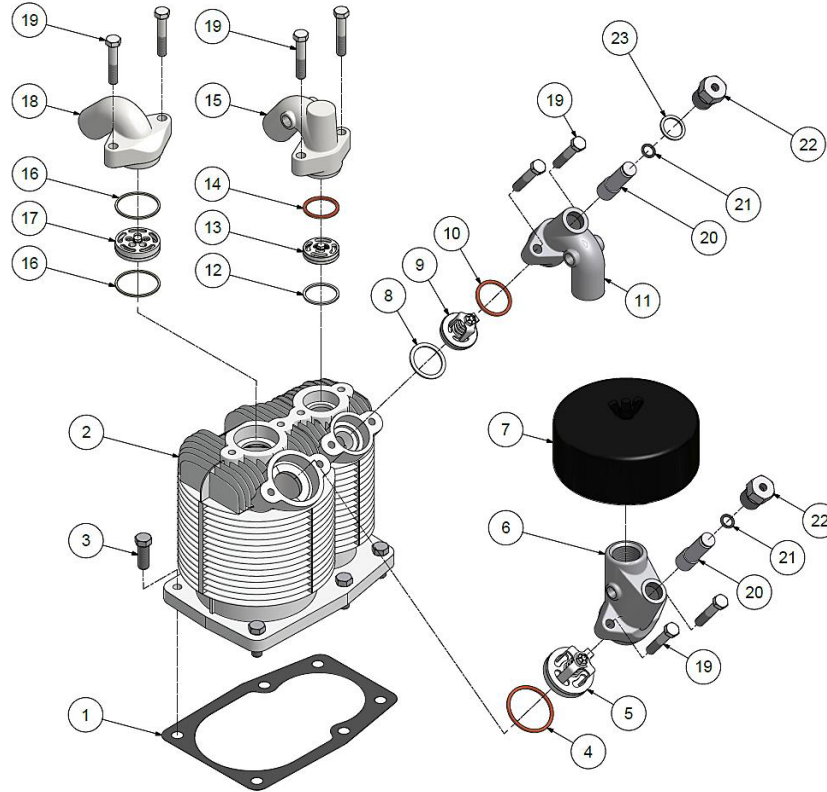
ITEM	PART No.	DESCRIPTION	QTY.	STELLAR P/N
1	M1584*	CONNECTING ROD	1	-
2	M1583	SCREW (torque @ 230 in-lbs)	2	7433
3	R1024	OIL DIPPER	1	7432
4	R1037	BEARING, WRIST PIN	1	7434
5	R10102	RING, RETAINING	2	7438
6	R1021	PIN, PISTON	1	7437
7	P02709C	PISTON	1	-
8	P02785A*	RING, PISTON	2	-
9	RE3610D1*	RING, EXPANDER	1	-
10	RE3610D2*	RING, RAIL	2	-

*not sold separately – see repair parts

REPAIR PARTS

1-4	Z752	CONNECTING ROD ASSEMBLY KIT	1	7431
5-7	ZP2709C	PISTON KIT, HIGH PRESSURE WITH PIN	1	-
8-10	Z797	RING SET, HIGH PRESSURE	1	-
5-10	Z9100	PISTON & RING KIT, HIGH PRESSURE	1	-
-	Z9085	COMPLETE RING SET, HIGH & LOW PRESSURE x 2	1	124284

Cylinder Group – with Head Unloaders



CYLINDER GROUP - HEAD UNLOADERS

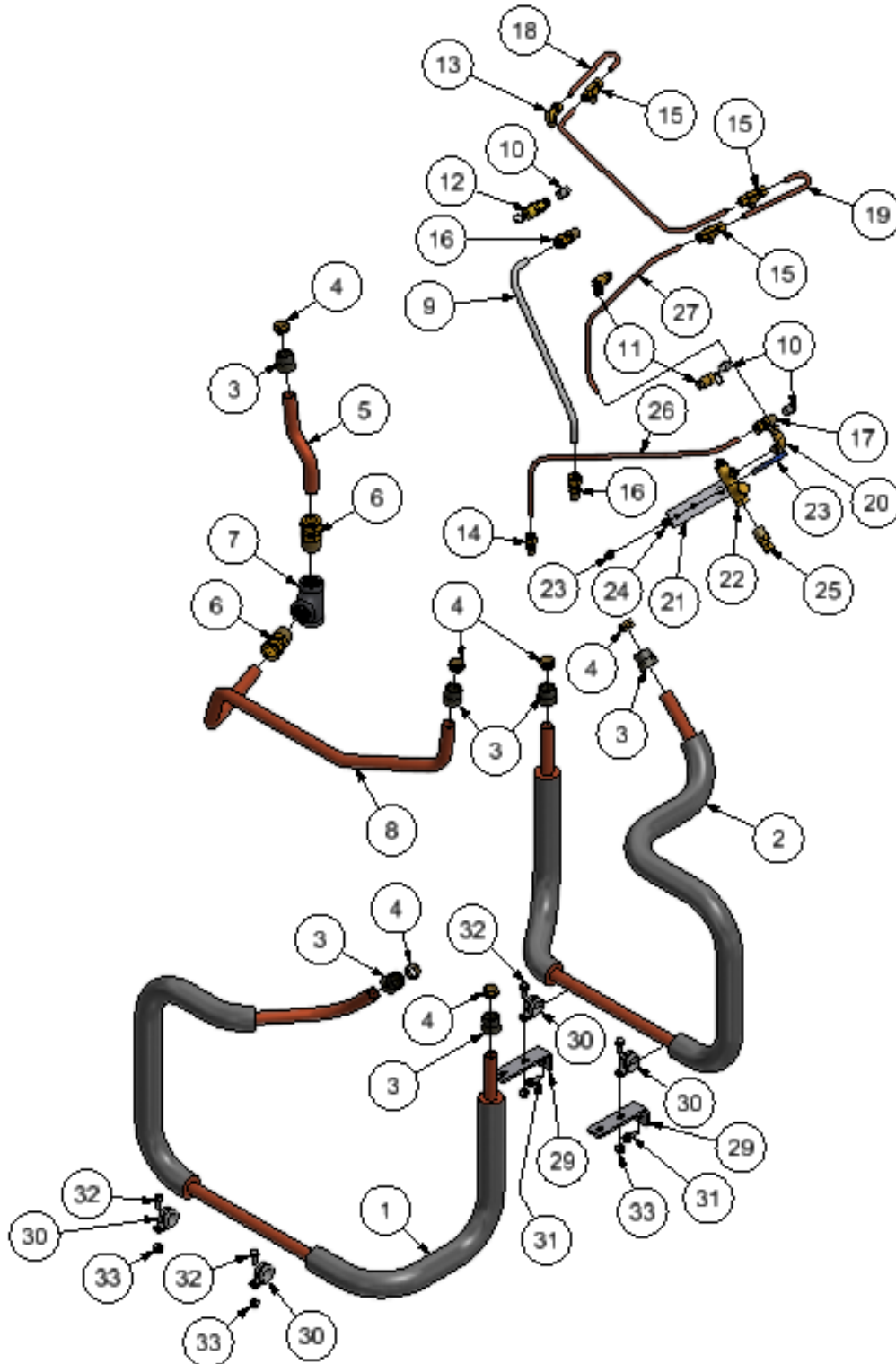
ITEM	PART No.	DESCRIPTION	QTY.	STELLAR P/N
1	NR29A	GASKET,CYLINDER FLANGE	1	6078
2	P12237D	CYLINDER	1	-
3	M2345	SCREW (torque @ 400 in-lbs)	6	6074
4	CQP14832A	GASKET,VALVE,LP,COPPER	1	124285
5	Z4877A	VALVE,LP,INTAKE,UNLOADER	1	7471
6	P09670C	MANIFOLD,LP INTAKE	1	7468
7	P04999A	FILTER SILENCER	1	6073
8	P09171A	GASKET,VALVE,HP,ALUMINUM	1	124286
9	Z11936	VALVE,HP,INTAKE,UNLOADER	1	7472
10	CQP14870A	GASKET,VALVE,HP,COPPER	1	124287
11	P12304B	MANIFOLD,HP INTAKE,HU	1	-
12	P04137A	GASKET,VALVE,HP,ALUMINUM	1	124288
13	Z115A	VALVE,HP,EXHAUST	1	C0894
14	CQP14869A	GASKET,VALVE,HP,COPPER	1	124289
15	P12303B	MANIFOLD,HP EXHAUST	1	-
16	P04135A	GASKET,VALVE,LP,ALUMINUM	2	124296
17	Z813A	VALVE,LP,EXHAUST,SUB-ASSY	1	C0891
18	RE102E	MANIFOLD,EXHAUST LP	1	7466
19	655ED080	SCREW (torque @ 200 in-lbs)	8	-
20	P09923A	UNLOADER PISTON	2	7482
21	P02547A	O-RING	2	7483
22	P02306B	VALVE,CYLINDER,FOR HU	2	7481
23	P00746A	GASKET	1	7493

*not sold separately – see repair parts

REPAIR PARTS

4, 5, 8, 9, 10, 12, 13, 14, 16, 17	Z6796	COMPLETE VALVE SET, WITH GASKET SET	1	124291
4, 8, 10, 12, 14, 16	Z5158	COMPLETE VALVE GASKET SET	1	4588
-	Z10887	COMPRESSOR GASKET SET (excludes valve gaskets)	1	-
-	Z9145	KIT, HEAD UNLOADER CONVERSION (includes manifolds, unloader valves assemblies, pilot valve, fittings and tubing)	1	-

Tubing and Control Group – with Head Unloaders



Tubing and Control Group – with Head Unloaders

TUBING AND CONTROL GROUP - HEAD UNLOADERS

ITEM	PART No.	DESCRIPTION	QTY.	STELLAR P/N
1	313CAP272	INTERCOOLER,RIGHT,R30, STELLAR	1	104198
2	314CAP272	INTERCOOLER,LEFT,R30, STELLAR	1	104199
3	SE541	NUT	6	C0900
4	SE542	COMPRESSION FERRULE	6	C1147
5	301CAP857	TUBE	1	116645
6	M2867	TUBE FITTING	2	5593
7	M480	TEE	1	7479
8	300CAP857	TUBE, DISCHARGE	1	116644
9	UB375B	BREATHER TUBE	1	-
10	64AA5	PLUG	3	-
11	M3685	PRESSURE RELIEF VALVE	2	C1182
12	P12039A	SAFETY VALVE	1	124292
13	M2868	TUBE FITTING	1	7497
14	M2863	TUBE FITTING	1	7473
15	M2879	TUBE FITTING	3	7498
16	M2864	TUBE FITTING	2	7476
17	M2862	TUBE FITTING	1	-
18	302CAP294	TUBE, LEFT MANIFOLD	1	-
19	303CAP294	TUBE,RIGHT MANIFOLD	1	-
20	86A40	ELBOW	1	-
21	P09866A	PILOT VALVE BRACKET	1	-
22	P09865A	UNLOADER VALVE PILOT	1	-
23	M1893	U-BOLT	1	-
24	M919A	LOCK WASHER	2	-
25	M2884	TUBE FITTING	1	-
26	309CAP294	TUBE, RELEASE VALVE, R30, STELLAR	1	124293
27	310CAP294	TUBE, ACTUATING, R30, STELLAR	1	-
28	311CAP294	TUBE, INTERMEDIATE, R30, STELLAR	1	-
29	301CAP017	BRACKET, INTERCOOLER, R30 STELLAR	2	-
30	VP1180597	CLAMP	4	-
31	M1998	SCREW	2	-
32	75LM54	SCREW	4	-
33	50AW3	NUT	4	-



Subject to Change without Notification.
© 2023 Stellar Industries