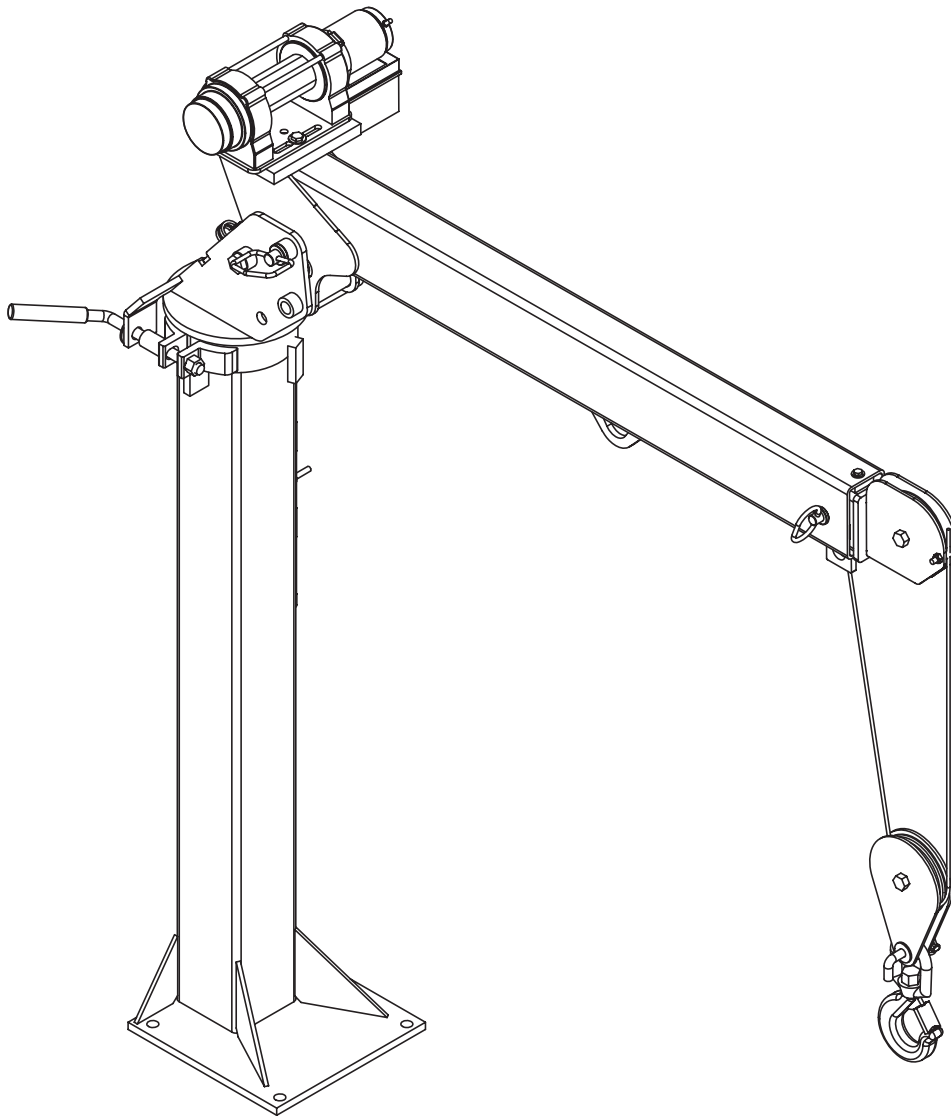


# **STELLAR<sup>®</sup> MODEL EC2000**

## **TELESCOPIC CRANE**

### **OWNERS' MANUAL**

**Installation • Assembly Drawings • Parts**



**Notice: A copy of this manual must remain with the equipment at all times.  
For a printable download copy, please visit: [www.stellarindustries.com](http://www.stellarindustries.com)**

**Stellar Industries, Inc.**

190 State Street

PO Box 169

Garner, IA 50438

800-321-3741

Fax: 641-923-2811

[www.stellarindustries.com](http://www.stellarindustries.com)

Subject to Change without Notification.  
© 2024 Stellar Industries, Inc.

Rev 2  
PN 90037

# EC2000 Manual Revisions

## ⚠ WARNING

Operating, maintaining, and servicing a Stellar product may expose you to chemicals including, but not limited to, engine exhaust, carbon monoxide, phthalates, and lead. These chemicals are known to the State of California to cause cancer and birth defects (or other reproductive harm). To keep your exposure to a minimum, be sure to avoid breathing exhaust and service your Stellar product in a well-ventilated area while wearing gloves or washing your hands frequently. For more information, go to [www.P65Warnings.ca.gov/passenger-vehicle](http://www.P65Warnings.ca.gov/passenger-vehicle).



[www.p65warnings.ca.gov](http://www.p65warnings.ca.gov)

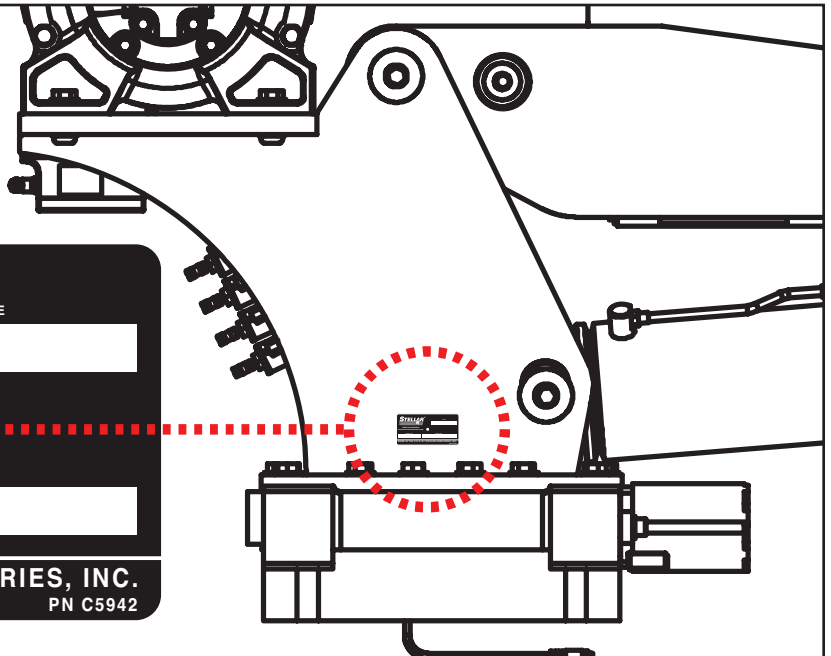
## NOTICE

### *Cold Weather Performance*

*Although clear data on cold weather performance from every steel manufacturer is not available for all types and thicknesses of steel, Stellar Industries is confident that the weldments on our products will operate to 100% of their intended purpose to temperatures down to -40° F / C.*

*It is recommended if Stellar manufactured equipment needs to be used in temperatures below -40° F / C, the operator should pull the unit into a climate-controlled area and allow the weldments to warm up to and then maintain a temperature above this level.*

## Serial Tag Location



<b>STELLAR</b> <sup>®</sup>		DATE
PATENT INFORMATION <a href="http://www.stellarindustries.com/ip">http://www.stellarindustries.com/ip</a>		
MODEL NO.	SERIAL NO.	
MADE IN THE U.S.A. BY STELLAR INDUSTRIES, INC. PN C5942		

# Table of Contents

---

Introduction .....	ii
<b>Chapter 1 - Specifications .....</b>	<b>1</b>
Specifications .....	2
Capacity Chart - Decal PN 18039 .....	3
<b>Chapter 2 - Installation .....</b>	<b>5</b>
General Installation.....	6
Installer Notice .....	6
Torque Data Chart .....	7
Torquing Information & Warnings .....	7
Installation and Mounting Instructions .....	8
Installation Kit - PN 19177 .....	9
Wiring Diagram .....	10
Control Kit Power Rotation - PN 70117 .....	12
Control Kit Power Rotation - PN 70117 Parts List .....	13
Control Kit Manual Rotation - PN 111837 .....	14
Control Kit Manual Rotation - PN 111837 Parts List .....	15
Electrical Circuit Grounding .....	16
Stability Procedure .....	17
Decal Kit - PN 18776 .....	18
<b>Chapter 3 - Drawing Assembly.....</b>	<b>19</b>
Standard Crane Assembly - PN 17631.....	20
Standard Crane Assembly - PN 17631 Parts List.....	21
50' Wire Rope Crane Assembly - PN 33939.....	22
50' Wire Rope Crane Assembly - PN 33939 Parts List.....	23
Short Mast Crane Assembly - PN 19146.....	24
Short Mast Crane Assembly - PN 19146 Parts List.....	25
Power Rotation Crane Assembly - PN 22601.....	26
Power Rotation Crane Assembly - PN 22601 Parts List.....	27
Power Rotation Short Mast Crane Assembly - PN 24906 .....	28
Power Rotation Short Mast Crane Asm - PN 24906 Parts .....	29
LH Mount Crane Assembly - PN 56658.....	30
LH Mount Crane Assembly - PN 56658 Parts List.....	31
Crane EC2000 Power Special Stop - PN 134347 .....	32
Crane EC2000 Power Special Stop - PN 134347 Parts .....	33

# Introduction

A copy of this manual is provided with every crane and can be found in the hard plastic manual case that is installed on the chassis. A copy of this manual shall remain with the crane at all times.

Throughout the manual, three signal words will be used to bring attention to important items:

## **NOTICE**

A NOTICE signal word indicates a practice not related to physical injury.

## **⚠ WARNING**

A WARNING signal word indicates a hazardous situation which, if not avoided, could result in death or serious injury.

## **⚠ DANGER**

A DANGER signal word indicates a hazardous situation which, if not avoided, will result in death or serious injury.

Information contained within this manual does not cover operation, maintenance, or troubleshooting. Please refer to the General EC Crane Manual for details on these items.

This manual is not binding. Stellar Industries, Inc. reserves the right to change, at any time, any or all of the items, components, and parts deemed necessary for product improvement or commercial/production purposes. This right is kept with no requirement or obligation for immediate mandatory updating of this manual.

If more information is required or technical assistance is needed, or if you feel that any part of this manual is unclear or incorrect, please contact the Stellar Customer Service Department by phone at 800-321-3741 or email at [service@stellarindustries.com](mailto:service@stellarindustries.com).

**For Technical Questions, Information, Parts, or Warranty, Call Toll-Free at  
800-321-3741**

Hours: Monday - Friday, 8:00 a.m. - 5:00 p.m. CST

Or email at the following addresses:

**Technical Questions, and Information**

[service@stellarindustries.com](mailto:service@stellarindustries.com)

**Order Parts**

[parts@stellarindustries.com](mailto:parts@stellarindustries.com)

**Warranty Information**

[warranty@stellarindustries.com](mailto:warranty@stellarindustries.com)

# Chapter 1 - Specifications

## Chapter Contents

Specifications .....	2
Capacity Chart - Decal PN 18039 .....	3

# Specifications

## SPECIFICATIONS EC2000

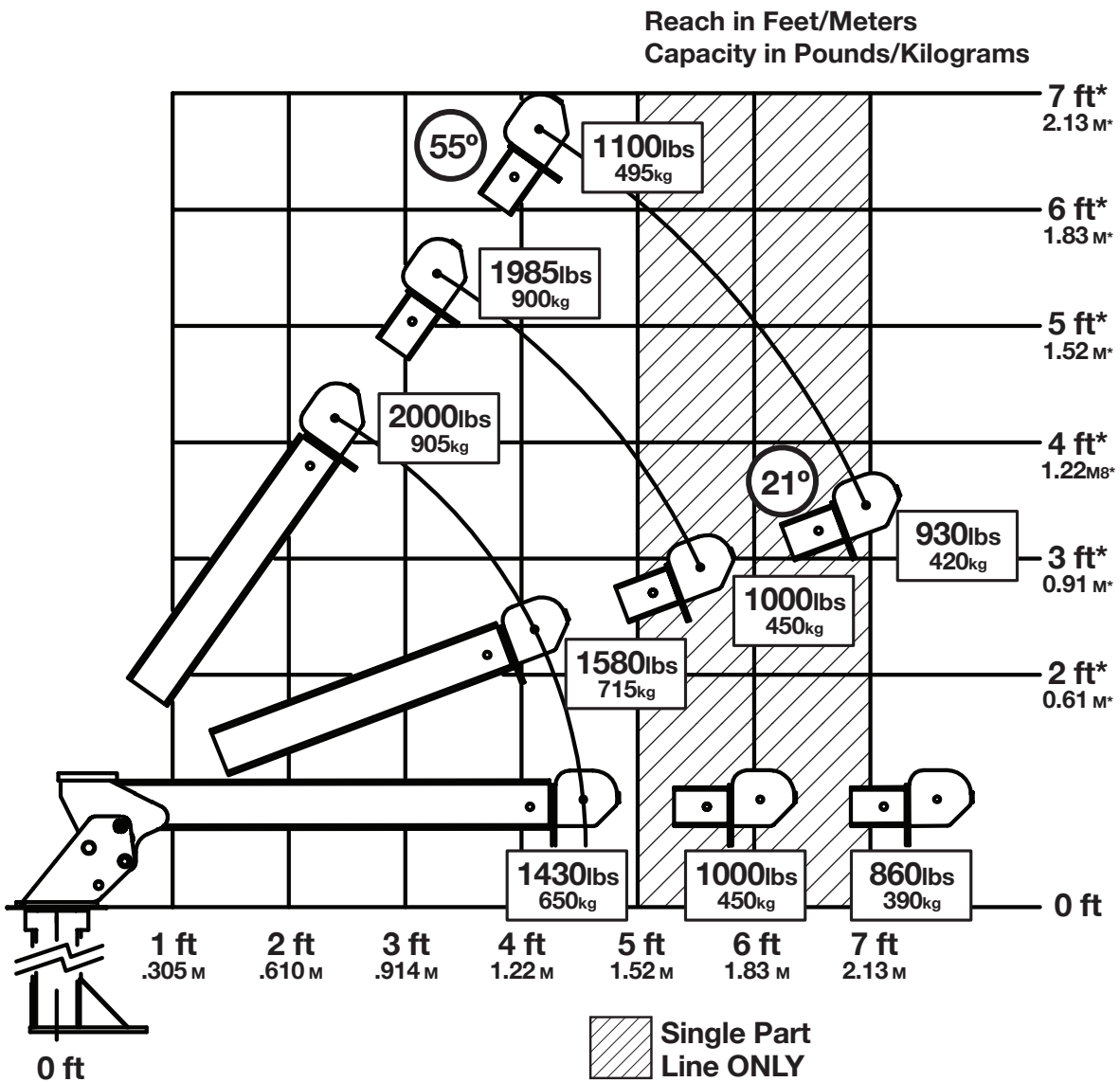
CRANE RATING	6,500 ft-lb (.99 ton meters)
STANDARD BOOM LENGTH	4' (1.219 m) FROM CL OF CRANE
BOOM EXTENSION:	1ST POSITION: MANUAL 18" (45.7 cm)
	2ND POSITION: MANUAL 18" (45.7 cm)
MAXIMUM HORIZONTAL REACH:	7' (2.13 m) FROM CL OF CRANE
MAXIMUM VERTICAL LIFT (FROM CRANE BASE)	10' 9" (3.28 m)
STOWED HEIGHT	60" (152.4 cm)
CRANE ONLY	30" (76.2 cm) - Short Mast
REQUIRED MOUNTING SPACE	12" X 12" (30.5 cm x 30.5 cm)
APPROXIMATE CRANE WEIGHT	275 LB (124.7 kg)
	230 LB (104.3 kg) - SHORT MAST
	300 LB (136.1 kg) - POWER ROTATION
BOOM ELEVATION	0 TO +21 TO +56 DEGREES

## WINCH SPECIFICATIONS

ROPE DIAMETER	3 / 16" (.476 cm)
LINE PULL SPEED:	20 FT / MIN (6.10 m)
MAX. SINGLE PART LINE:	1100 LB (495 kg)
MAX. DOUBLE PART LINE	2000 LB (905 kg)
ROTATION (WORM GEAR):	314° POWER
LIFTING CAPACITY:	1580 LB @ 4' (715 kg @ 1.219 m)
	1190 LB @ 5' 6" (540 kg @ 1.676 m)
	930 LB @ 7' (420 kg @ 2.13 m)

**SUBJECT TO CHANGE WITHOUT NOTIFICATION**

# Capacity Chart - Decal PN 18039



Weight of load handling devices are part of the load lifted and must be deducted from the capacity.

Maximum 1 - part line capacity is 1100lbs (495kg). For greater loads, use 2 - part line.

\*Height depends on base:

Tall base - add 4 ft (122 cm).

Short base power rot. - add 1 ft 8 in (51 cm).

Short base manual rot. - add 1 ft (30 cm).



## EC2000

PN 104236





# Chapter 2 - Installation

## Chapter Contents

General Installation .....	6
Installer Notice .....	6
Torque Data Chart.....	7
Torquing Information & Warnings.....	7
Installation and Mounting Instructions.....	8
Installation Kit - PN 19177.....	9
Wiring Diagram .....	10
Control Kit Power Rotation - PN 70117.....	12
Control Kit Power Rotation - PN 70117 Parts List.....	13
Control Kit Manual Rotation - PN 111837 .....	14
Control Kit Manual Rotation - PN 111837 Parts List .....	15
Electrical Circuit Grounding.....	16
Stability Procedure.....	17
Decal Kit - PN 18776.....	18

# General Installation

This chapter is designed to serve as a general guide for the installation of a EC2000 Crane. Each installation is considered unique so certain portions of this chapter may or may not apply to your direct application. If a question should arise during the installation process, please contact Stellar Customer Service at (800) 321 3741.

It is the installer's responsibility to assure that the crane is mounted on a platform that will support the maximum crane rating of this crane.

**⚠ WARNING** Do not install this crane on a body not capable of handling the loads imposed on it. Failure to do so may result in serious injury or death.

**NOTICE** When installing welder units to the service bodies, it is highly recommended that a surge protector is installed on the chassis batteries to protect the crane radio receiver, wiring and other electronic devices from an unexpected electrical spike or surge. Failure to do so could result in extensive damage to the service body and crane electrical circuit.

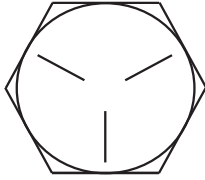
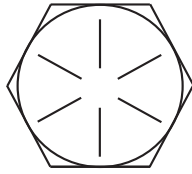
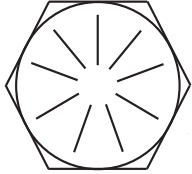
## Installer Notice

According to Federal Law (49 cfr part 571), each final-stage manufacturer shall complete the vehicle in such a manner that it conforms to the standards in effect on the date of manufacture of the incomplete vehicle, the date of final completion, or a date between those two dates. This requirement shall, however, be superseded by any conflicting provisions of a standard that applies by its terms to vehicles manufactured in two or more stages.

Therefore, the installer of Stellar® Cranes and Bodies is considered one of the manufacturers of the vehicle. As such a manufacturer, the installer is responsible for compliance with all applicable federal and state regulations. They are required to certify that the vehicle is in compliance with the Federal Motor Vehicle Safety Standards and other regulations issued under the National Traffic and Motor Vehicle Safety Act.

Please reference the Code of Federal Regulations, title 49 - Transportation, Volume 5 (400-999), for further information, or visit <http://www.gpoaccess.gov/nara/index.html> for the full text of Code of Federal Regulations.

# Torque Data Chart

		GRADE 5		GRADE 7		GRADE 9
						
SIZE (DIA - TPI)	BOLT DIA (INCHES)	PLAIN ( FT-LB)	PLATED (FT-LB)	PLAIN (FT-LB)	PLATED (FT-LB)	PLATED (FT-LB)
5/16-18	0.3125	17	13	25	18	22
3/8-16	0.3750	31	23	44	33	39
7/16-14	0.4375	49	37	70	52	63
1/2-13	0.5000	75	57	105	80	96
9/16-12	0.5625	110	82	155	115	139
5/8-11	0.6250	150	115	220	160	192
3/4-10	0.7500	265	200	375	280	340
7/8-9	0.8750	395	295	605	455	549
1-8	1.000	590	445	910	680	823
1 1/8-7	1.1250	795	595	1290	965	1167
1 1/4-7	1.2500	1120	840	1815	1360	1646
1 3/8-6	1.3750	1470	1100	2380	1780	2158
1 1/2-6	1.500	1950	1460	3160	2370	2865

## Torquing Information & Warnings

**⚠ WARNING** When using the torque data in the chart, the following rules should be observed:

- **Bolt manufacturer's** particular specifications should be consulted when provided.
- **Flat washers** of equal strength must be used.
- **All torque measurements** are given in foot-pounds. To convert to inch-pounds, multiply by 12.
- **Torque values** specified are for bolts with residual oils or no special lubricants\* applied. If special lubricants of high stress ability, such as Never-Seez compound graphite and oil, molybdenum disulphite, colloidal copper or white lead are applied, multiply the torque values in the charts by the factor .90. The use of Loctite does not affect the torque values listed above.
- **Torque values** for socket-head capscrews are the same as for Grade 8 capscrews.
- **Do not use these values** if a different torque value or tightening procedure is given for a specific application. Torque values listed are for general use only. Check tightness of fasteners periodically.
- **Sheer bolts** are designed to fail under predetermined loads. Always replace shear bolts with identical grade.
- **Fasteners** should be replaced with the same or higher grade. If higher grade fasteners are used, these should only be tightened to the strength of the original.
- **Tighten** plastic insert or crimped steel-type lock nuts to approximately 110 percent of the dry torque values shown in the chart on page 8, applied to the nut, not to the bolt head. Tighten toothed or serrated-type lock nuts to the full torque value.

### NOTICE

*\*Lubricated means coated with a lubricant such as engine oil, or fasteners with phosphate and oil coatings. "Dry" means plain or zinc plated without lubrication. Tighten lubricated bolts to approximately 80% of dry bolts.*

# Installation and Mounting Instructions

## Installation Instructions:

### Prepare Platform For Crane Installation (Not Supplied)

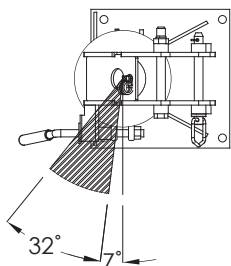
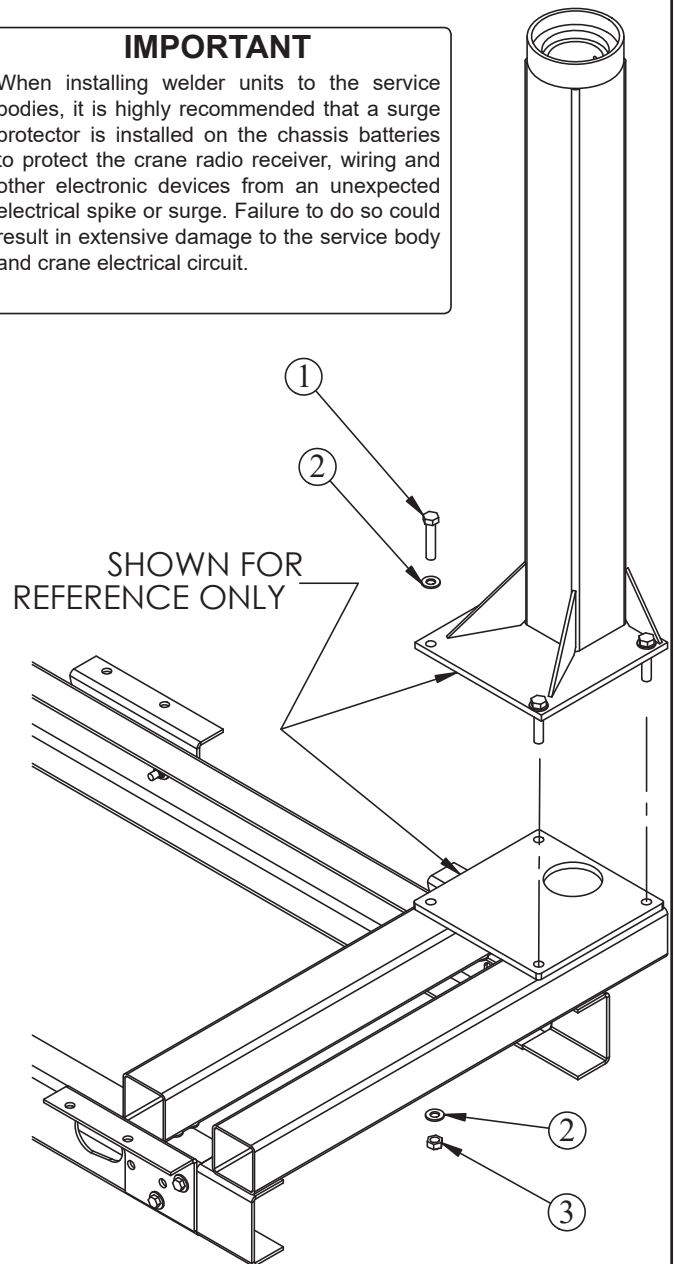
1. When designing the platform, maintain a proper clearance for the crane mounting and operation.
2. The platform must be strong enough to support the crane and rated load.
3. Platform/crane support minimum requirements: Top plate should be made from 0.50" grade 50 plate. The structure should be supported by 4 x 4 x 3/16 tubing.

## Mounting Instructions:

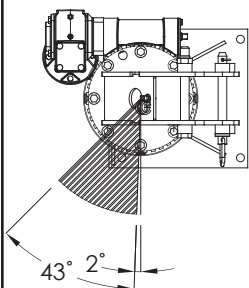
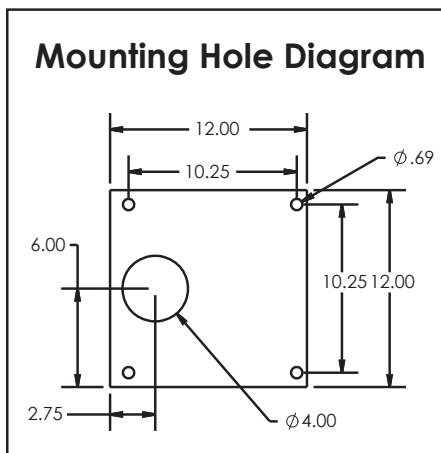
1. Lower the crane onto the mounting platform.
2. Mount the crane using 5/8" grade 8 bolts, flat washers, and nyloc nuts.
3. Connect the power supply and control wiring per recommendations as shown on the wiring diagrams in this chapter.
4. Operate the crane for several cycles.

### IMPORTANT

When installing welder units to the service bodies, it is highly recommended that a surge protector is installed on the chassis batteries to protect the crane radio receiver, wiring and other electronic devices from an unexpected electrical spike or surge. Failure to do so could result in extensive damage to the service body and crane electrical circuit.



STOP POSITION -  
MANUAL ROTATION



STOP POSITION -  
POWER ROTATION

# Installation Kit - PN 19177

## PN 19177

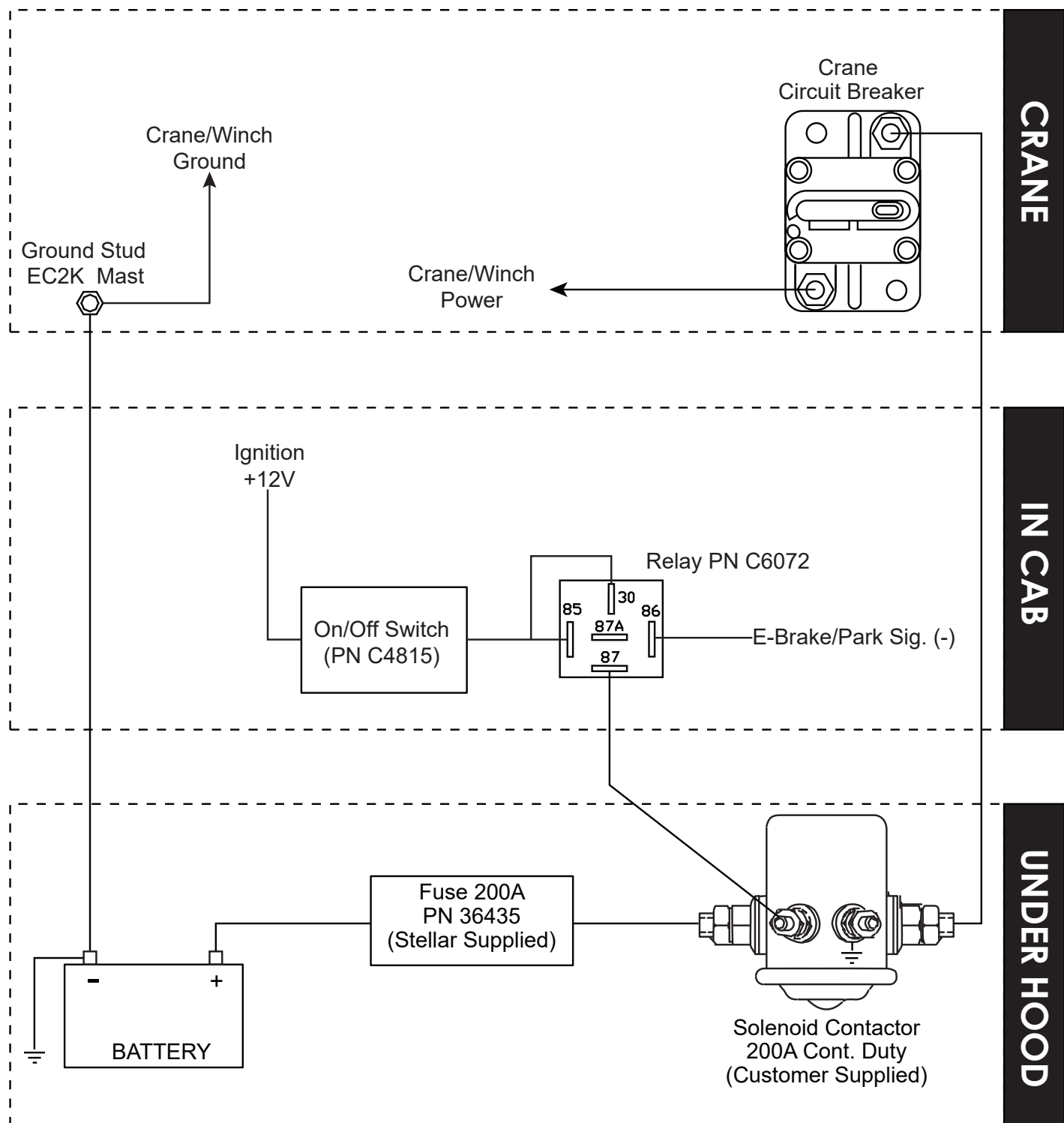
ITEM	PART	DESCRIPTION	QTY
1	D1034	CAP SCR 0.63-11 X 3.00 HHGR8 ZY	4
2	C5902	WASHER 0.63 SAE FLAT YELLOW GR8	8
3	24868	NUT 0.63-11 HHGR8 NYLOCK ZY	4

REV. B

**NOTES:**

PLACE ELECTRICAL ITEMS P/N'S C4815, C6072, 36435, 32523 IN A SEALED BAG AND SHIP WITH CRANE.

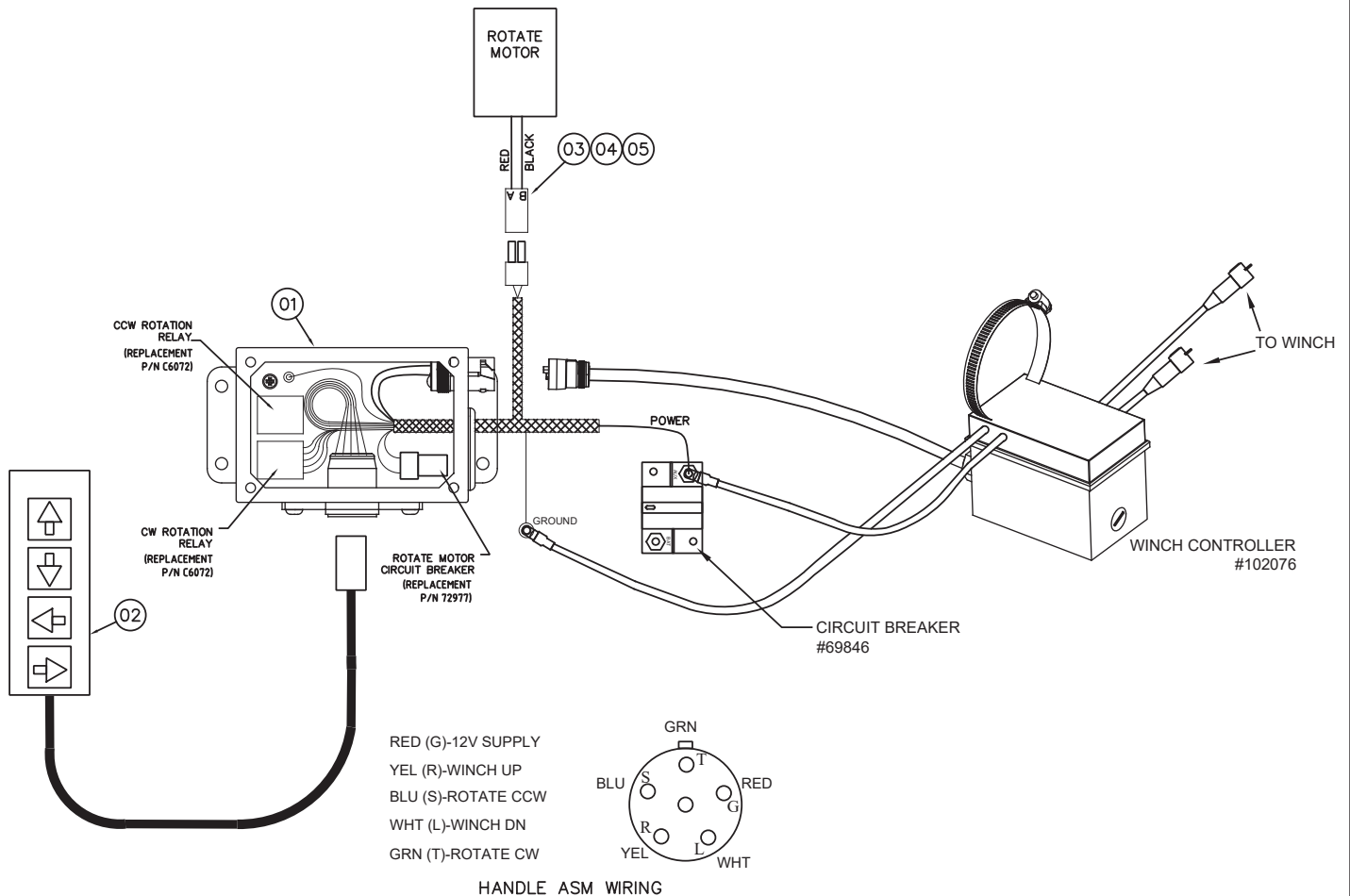
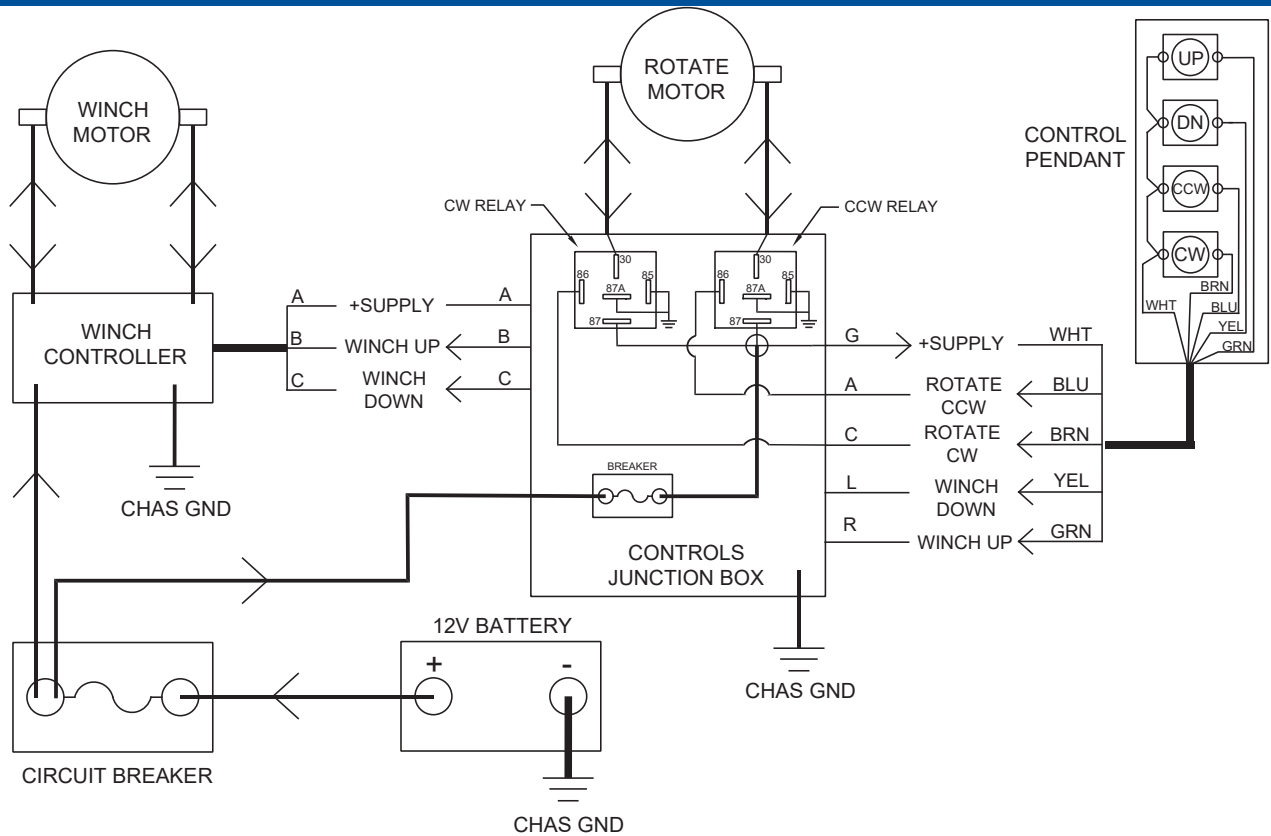
# Wiring Diagram



\* Minimum wire size for power and ground cables: #4

**This page left intentionally blank.**

# Control Kit Power Rotation - PN 70117



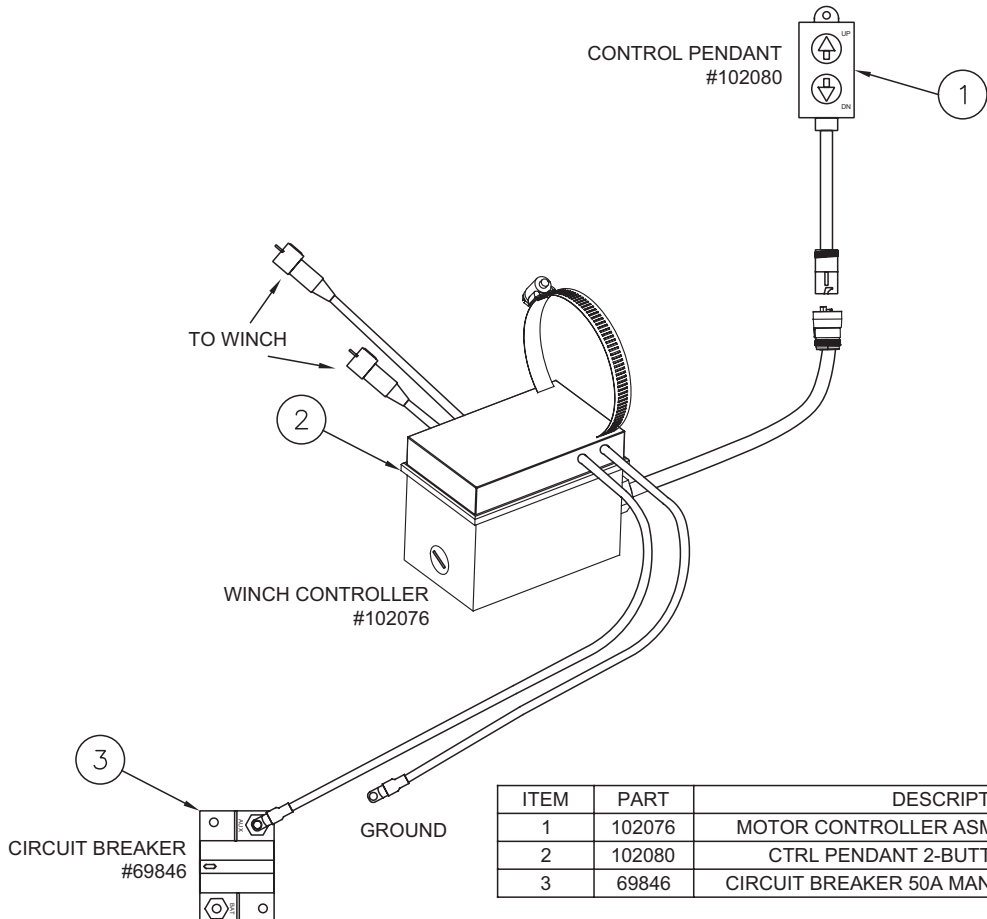
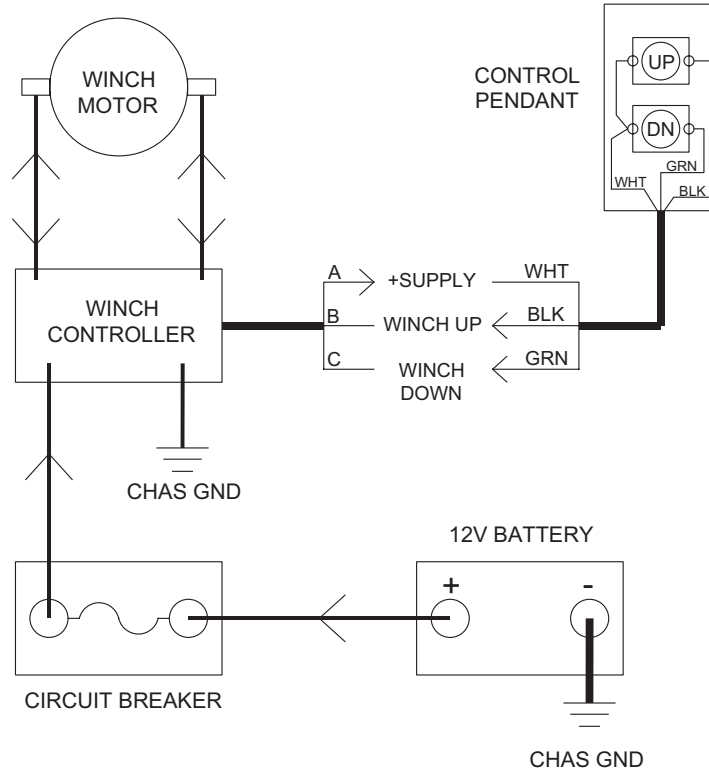


# Control Kit Power Rotation - PN 70117 Parts List

## PN 70117

ITEM	PART	DESCRIPTION	QTY
01	70073	CONTROL JBOX ASM EC2K PWR ROT	1
02	86044	HANDLE ASM 2 FCTN EC2K POWER	1
03	9752	CONNECTOR 2 PIN SHROUD WEATHERPACK	1
04	13564	CONTACT MALE TERMINAL	2
05	11359	CABLE SEAL 14-16GA	2
06	102076	MOTOR CONTROLLER ASM ELEC WINCH EC2K	1
07	69846	CIRCUIT BREAKER 50A MAN RESET	1
REV. B			

# Control Kit Manual Rotation - PN 111837



ITEM	PART	DESCRIPTION	QTY
1	102076	MOTOR CONTROLLER ASM ELEC WINCH EC2K	1
2	102080	CTRL PENDANT 2-BUTTON EC2K WINCH	1
3	69846	CIRCUIT BREAKER 50A MAN RESET PTT SRFMNT	1

# Control Kit Manual Rotation - PN 111837 Parts List

# Electrical Circuit Grounding

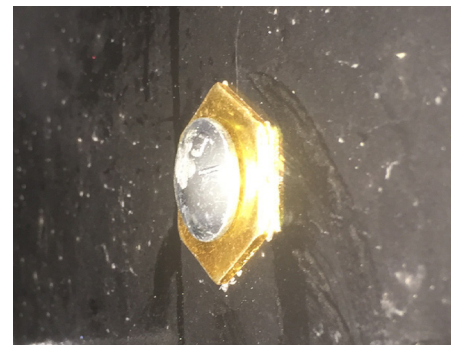
When installing the crane, always locate a good source for grounding the circuit. A majority of electrical failures are due to poor grounding. Poor grounding can cause intermittent operation of the equipment, electrical component failures and cause the equipment to not operate at all.

Chassis manufacturers usually will have a ground strap which ties into the truck frame from the battery, but it is always a good idea to check each individual model to verify where the ground is located. Never use the mechanic body as a ground source. Make sure the electrical grounds are routed to either the chassis frame rail or the chassis's main grounding source.

Stellar provides a stud (PN 40992) for grounding the crane to the chassis frame rail:



Inside Frame Rail



Outside Frame Rail

• Drill the hole to the frame rail in accordance with the chassis body builder's guide.

## **⚠ WARNING**

- Hole size: 21/64"
- The hole location should allow for the shortest length of ground wire while keeping enough slack for flexibility.
- Be sure to grind the frame rail around the hole to ensure a proper ground connection.
- Frame rail thickness may require additional flat washers (as shown).
- Use an electrical coating on hardware to prevent corrosion.

# Stability Procedure

## Definition of Stability for the Stellar Telescopic Crane Products:

A truck is stable until the load cannot be lifted off the ground with the winch, without tipping over the truck. Every Stellar crane installed must be tested for stability to determine the actual load capacity of the final truck package. The actual test data must be recorded and supplied with the truck at the time of in-service and should be kept with the truck at all times. The following procedure will test the truck package for stability and will provide a stability capacity chart. The load limit information shown on the stability capacity chart is formulated on 85% tipping.

### Set Up:

1. Locate the truck on a test course in position for loading and engage travel brakes.
2. Set stabilizers so that they make contact with firm, level footings.
3. Operate the crane under partial load to assure operator proficiency and proper machine function.

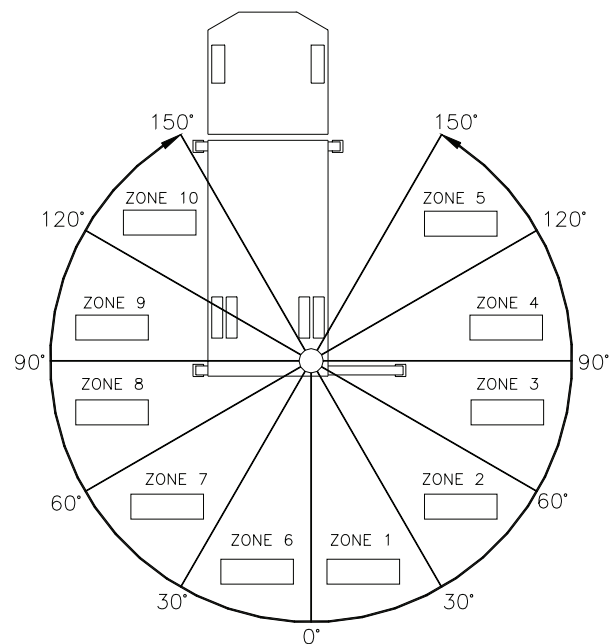
## EC2000 Stability Data

**Max Horizontal Reach:** 180" (From the center of rotation to boom tip)

**Stability Test Weight:** 875 lbs.

### Test Procedure

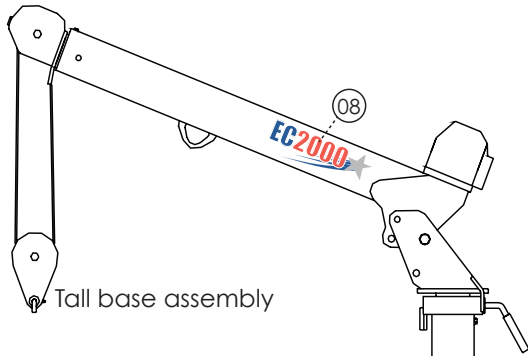
1. Rotate the crane into Zone 1 position.
2. With the crane fully retracted and the boom horizontal, winch the test weight off the ground.  
Note: Keep weight within six inches of the ground at all times.
3. Extend the boom outward until full extension has been reached or until the truck becomes unstable (Again, use the winch to keep the weight within six inches of the ground.)
4. If the boom goes full extension without becoming unstable, the crane is termed stable for this zone and 100% can be written in the Zone 1 data box.
5. If the truck becomes unstable prior to going full extension, retract the boom until the truck becomes stable and measure the horizontal reach in this position (center of rotation to boom tip). This is the stable horizontal reach for this zone. Stable horizontal reach divided by Maximum horizontal reach multiplied by 100 equals the percentage of rated capacity for this zone. Use the following formula to determine the percentage of rated capacity:



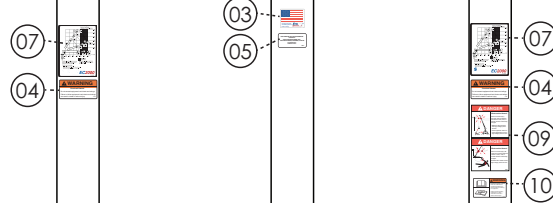
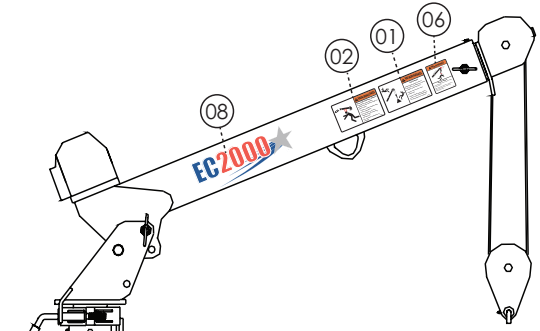
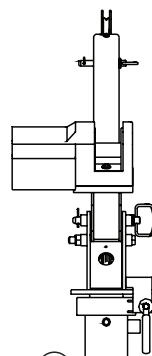
$$\frac{\text{Stable Horizontal Reach}}{\text{Max Horizontal Reach}} \times 100 = \text{Percentage of Rated}$$

6. Record this number in the data box for Zone 1. This is the revised capacity due to stability for this zone.
7. Repeat this procedure for each zone until the worksheet is completed.
8. This is the revised capacity based on stability of this package.

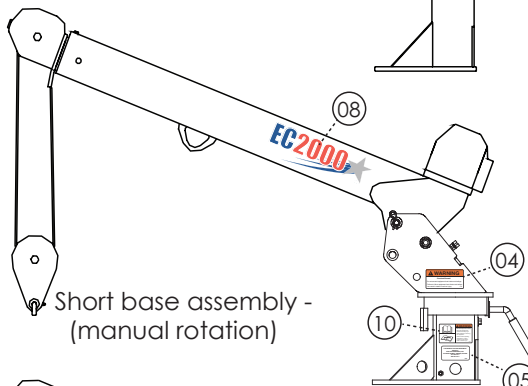
# Decal Kit - PN 18776



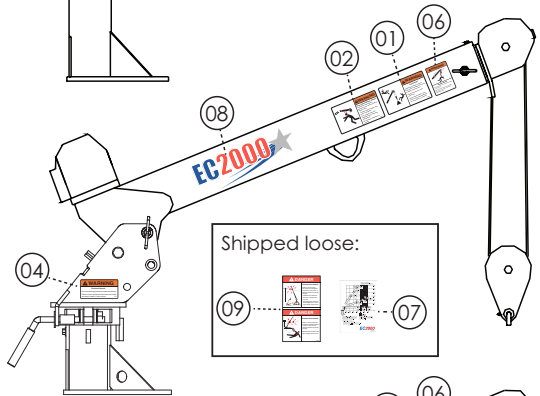
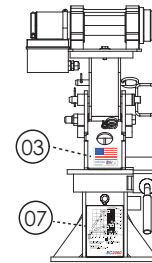
Tall base assembly



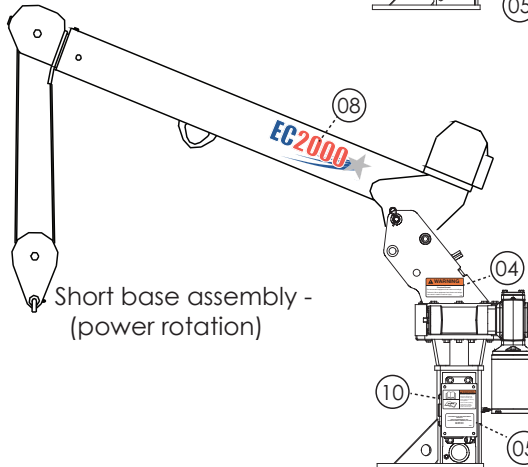
**PN 18776**  
(Rev D - 09/20/19)  
Added short base crane views



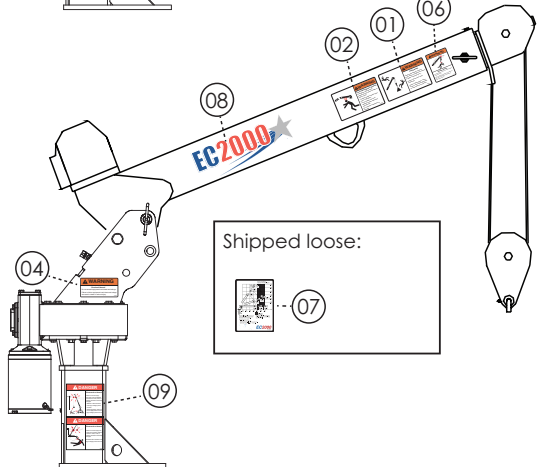
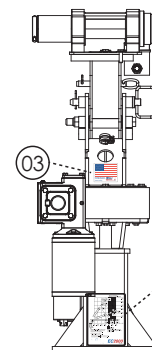
Short base assembly -  
(manual rotation)



Shipped loose:  
09 07



Short base assembly -  
(power rotation)



Shipped loose:  
07

**EC2000 DECAL KIT**

ITEM	PN	DESCRIPTION	LOCATION	QTY	ITEM	PN	DESCRIPTION	LOCATION	QTY
01	12451	DECAL WARNING HOISTING PERSONNEL	Main Boom	1	06	12300	DECAL WARNING TWO BLOCKING	Main Boom	1
02	12452	DECAL WARNING MANUAL EXT	Main Boom	1	07	104236	DECAL CAPACITY EC2000	Various (See Drawing)	2
03	35234	DECAL STELLAR MADE IN THE USA	Main Boom	1	08	18040	DECAL IDENTIFICATION EC2000	Main Boom (Both Sides)	2
04	4189	DECAL WARNING OVERLOAD	Various (See Drawing)	2	09	6727	DECAL DANGER ELECTROCUTION VERT	Various (See Drawing)	1
05	4214	DECAL SERVICE	Various (See Drawing)	1	10	77734	DECAL WARNING UNTRAINED OPERATOR	Various (See Drawing)	1

# Chapter 3 - Drawing Assembly

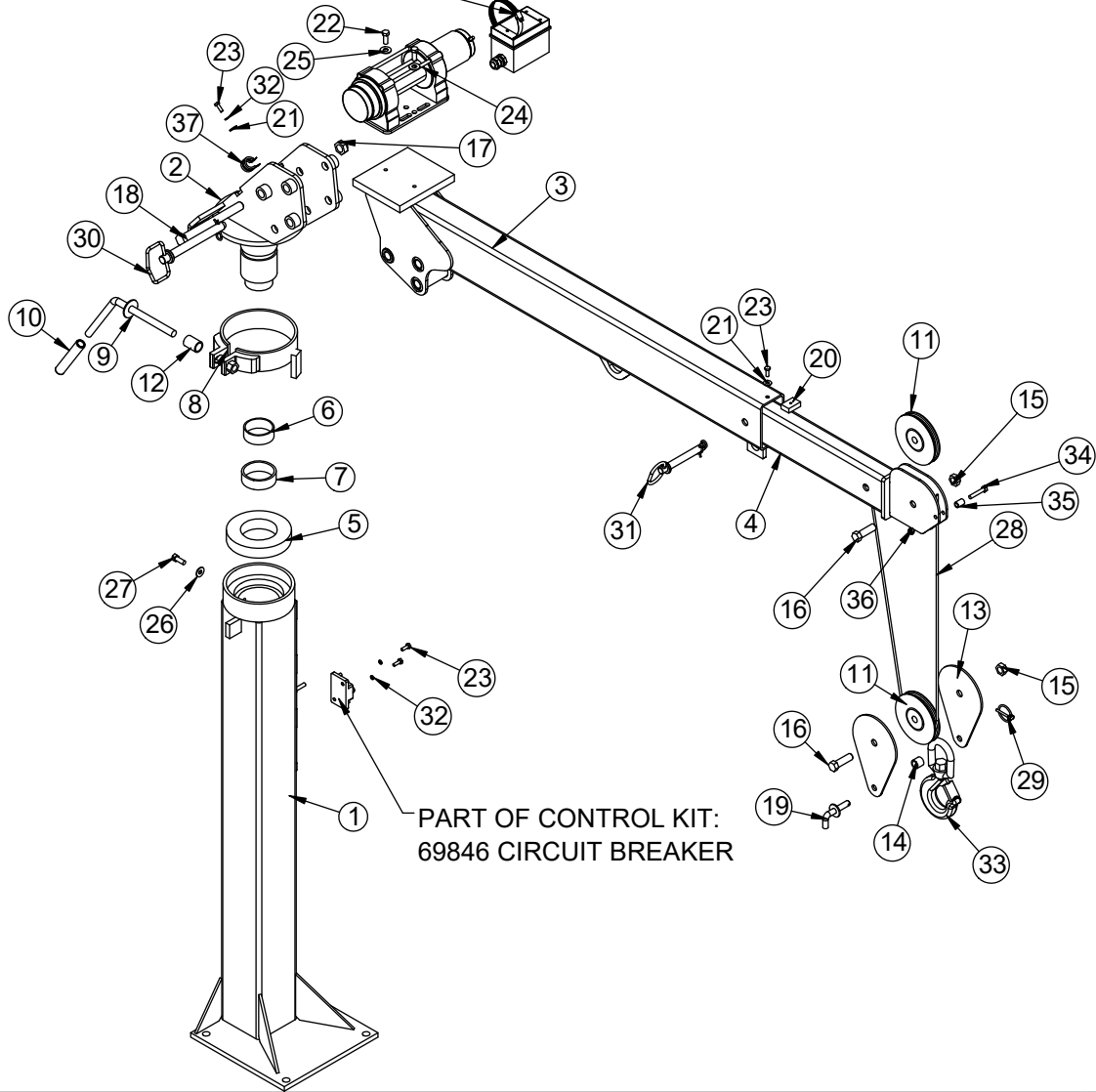
## Chapter Contents

Standard Crane Assembly - PN 17631 .....	20
Standard Crane Assembly - PN 17631 Parts List .....	21
50' Wire Rope Crane Assembly - PN 33939 .....	22
50' Wire Rope Crane Assembly - PN 33939 Parts List .....	23
Short Mast Crane Assembly - PN 19146 .....	24
Short Mast Crane Assembly - PN 19146 Parts List .....	25
Power Rotation Crane Assembly - PN 22601 .....	26
Power Rotation Crane Assembly - PN 22601 Parts List .....	27
Power Rotation Short Mast Crane Assembly - PN 24906 .....	28
Power Rotation Short Mast Crane Asm - PN 24906 Parts .....	29
LH Mount Crane Assembly - PN 56658 .....	30
LH Mount Crane Assembly - PN 56658 Parts List .....	31
Crane EC2000 Power Special Stop - PN 134347 .....	32
Crane EC2000 Power Special Stop - PN 134347 Parts .....	33

# Standard Crane Assembly - PN 17631

PART OF CONTROL KIT:

102076 WINCH CONTROLLER



## ITEMS NOT SHOWN - 17631

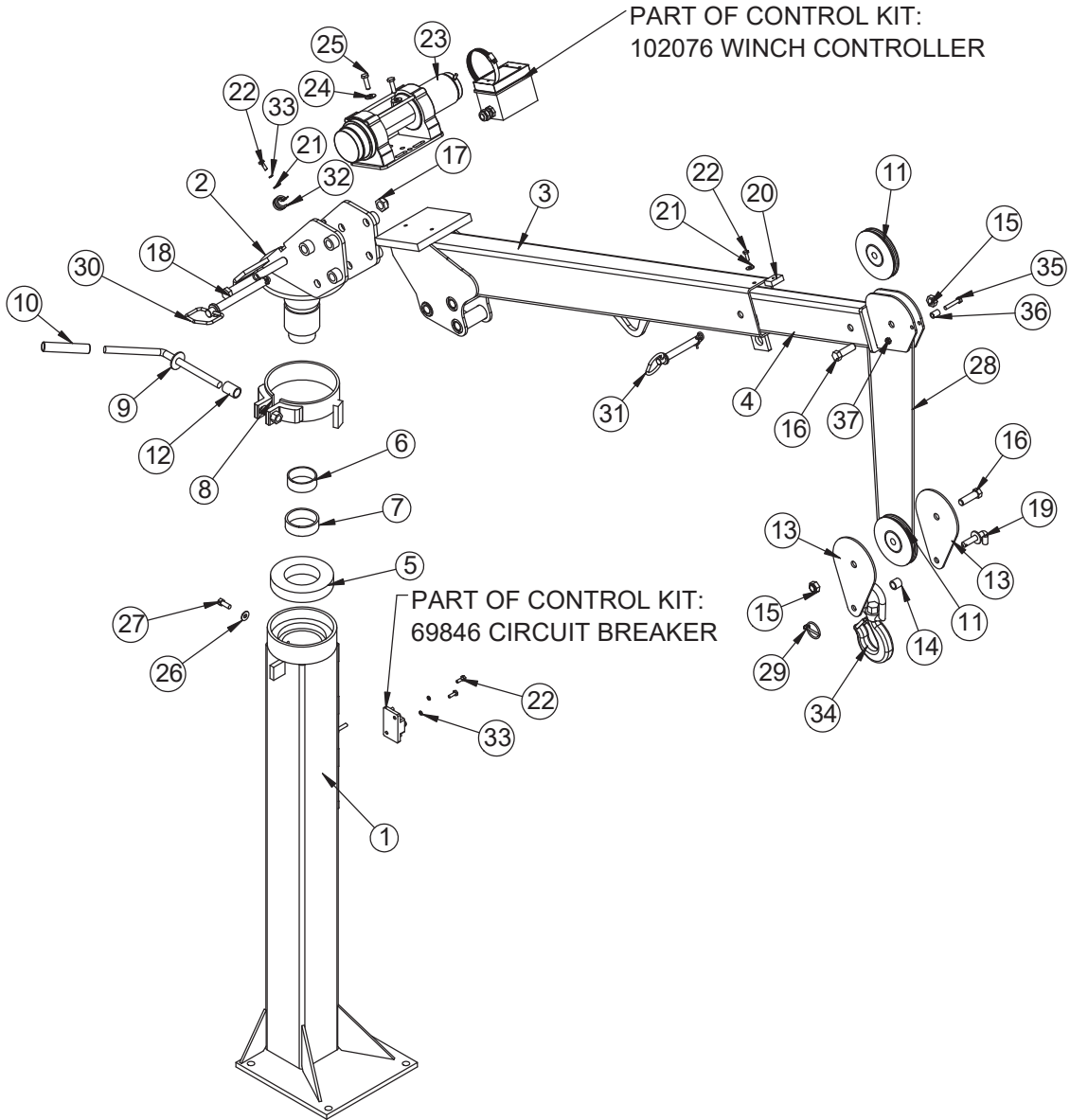
PART	DESCRIPTION	QTY
111837	CONTROL KIT EC2000 MAN ROT	1
18776	DECAL KIT EC2000	1
19177	INST KIT EC2000	1
76334	MANUAL KIT	1
90037	MANUAL CRANE EC2000	1
19375	BOX SHIPPING EC2K	1
61506	PALLET EC2K SHIPPING	1
63572	CONTAINER 5 GAL BUCKET	1
63573	CONTAINER 5 GAL BUCKET LID	1



# Standard Crane Assembly - PN 17631 Parts List

PN 17631			
ITEM	PART	DESCRIPTION	QTY
1	39693	BASE EC2K PC WHITE	1
2	17600	MAST EC2K PC WHITE	1
3	39691	MAIN BOOM EC2000 PC WHITE	1
4	39690	EXT BOOM EC2K PC WHITE	1
5	18069	BEARING RADIAL BALL 6" BRB6217-2RS	1
6	18068	RACE INNER 2.50" TORIR-4016	1
7	18067	BEARING DRAWN CUP NEEDLE 2.75" TORB-4416	1
8	18475	BRAKE WELDMENT EC2K PC WHITE	1
9	18483	HANDLE WELDMENT EC2K PC WHITE	1
10	18485	HANDLE GRIP EC2K	1
11	17222	SHEAVE EC2K 5.00 DIA .19R/.75 THK	2
12	18711	PIPE 0.75 SCH40X1.44	1
13	17965	PLATE EC2K SNATCH BLOCK PC RED ET-5391	2
14	18036	SPACER SNATCH BLOCK EC2K PC RED	1
15	2826	NUT 0.63-11 HH NYLOC	2
16	0399	CAP SCR 0.63-11X2.00 HHGR5	2
17	C0538	NUT 0.75-10 HHGR8 NYLOC	1
18	18712	CAP SCR 0.75-10X7.50 HHGR8 ZY	1
19	18714	PIN WLDMT LATCHING PC RED ET-5391	1
20	18715	STOP EXT EC2K	1
21	0340	WASHER 0.25 FLAT	2
22	13573	CAP SCR 0.38-16X1.00 HHGR8	2
23	0479	CAP SCR 0.25-20X0.75 HHGR5	4
24	101889	WINCH 1200 EC2000	1
25	C6353	WASHER 0.38 FLAT GR8	2
26	0346	WASHER 0.38 FLAT	1
27	0351	CAP SCR 0.38-16X1.00 HHGR5	1
28	18773	WIRE ROPE 3/16 7X19 GAC 40FT W/1 TON HOOK	1
29	5753	PIN 0.19X1.56 LYNCH	1
30	18778	PIN HITCH 0.75X6.25 W\ LANYARD	1
31	18777	PIN HITCH 0.63X4.00 W\ LANYARD	1
32	0521	WASHER 0.25 LOCK	3
33	C6018	HOOK CRANE-3 TON	1
34	0487	CAP SCR 0.31-18X1.75 HHGR5	1
35	19374	SPACER BOOM TIP EC2K PC BLACK	1
36	0342	NUT 0.31-18 HH NYLOC	1
37	7623	CLAMP 1.00 RUBBER	1
REV. J			

# 50' Wire Rope Crane Assembly - PN 33939



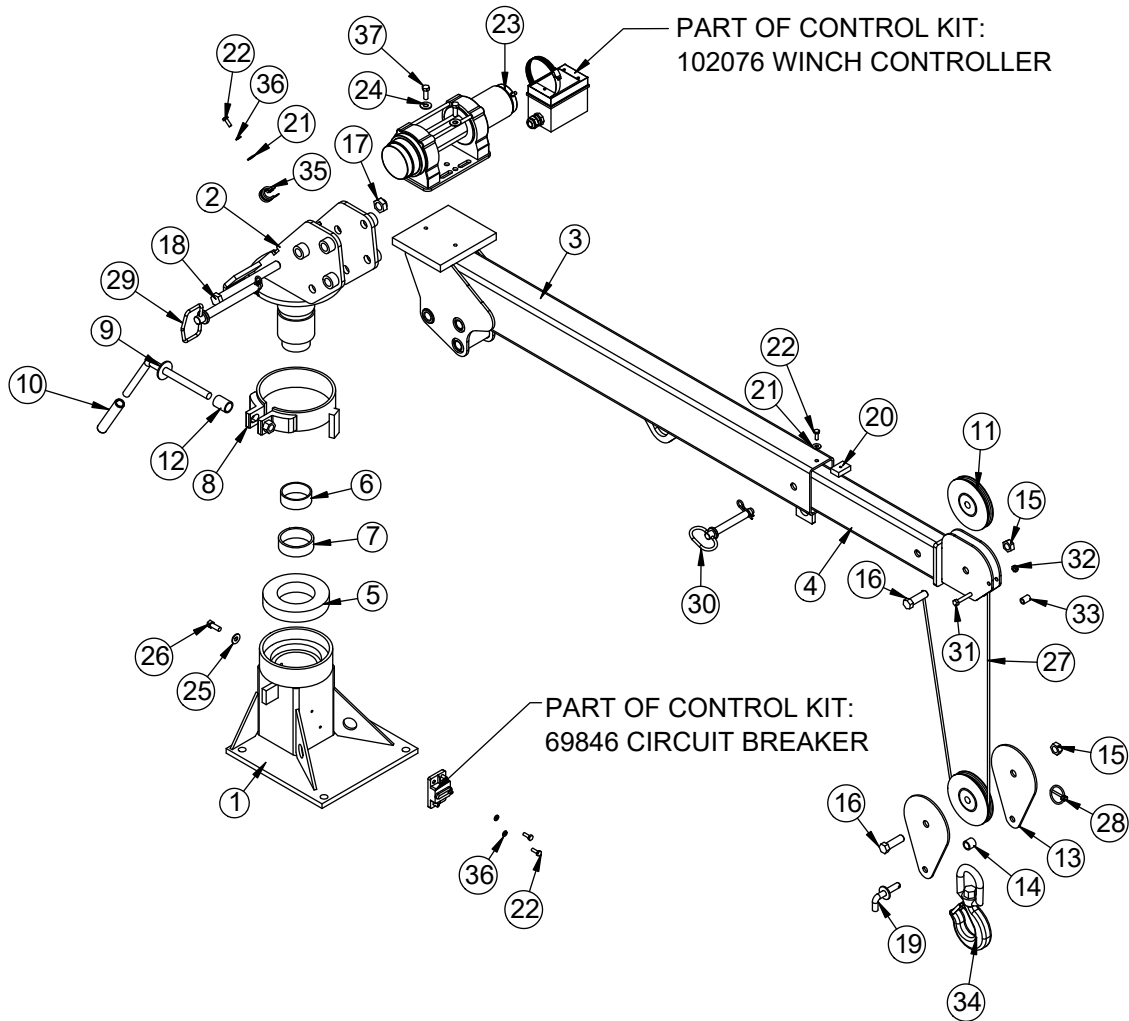
## ITEMS NOT SHOWN - 33939

PART	DESCRIPTION	QTY
111837	CONTROL KIT EC2000 MAN ROT	1
18776	DECAL KIT EC2000	1
19177	INST KIT EC2000	1
76334	MANUAL KIT	1
90037	MANUAL CRANE EC2000	1
19375	BOX SHIPPING EC2K	1
61506	PALLET EC2K SHIPPING	1

# 50' Wire Rope Crane Assembly - PN 33939 Parts List

PN 33939			
ITEM	PART	DESCRIPTION	QTY
1	39693	BASE EC2K PC WHITE	1
2	17600	MAST EC2K PC WHITE	1
3	39691	MAIN BOOM EC2000 PC WHITE	1
4	39690	EXT BOOM EC2K PC WHITE	1
5	18069	BEARING RADIAL BALL 6" BRB6217-2RS	1
6	18068	RACE INNER 2.50" TORIR-4016	1
7	18067	BEARING DRAWN CUP NEEDLE 2.75" TORB-4416	1
8	18475	BRAKE WELDMENT EC2K PC WHITE	1
9	18483	HANDLE WELDMENT EC2K PC WHITE	1
10	18485	HANDLE GRIP EC2K	1
11	17222	SHEAVE EC2K 5.00 DIA .19R/.75 THK	2
12	18711	PIPE 0.75 SCH40X1.44	1
13	17965	PLATE EC2K SNATCH BLOCK PC RED ET-5391	2
14	18036	SPACER SNATCH BLOCK EC2K PC RED	1
15	2826	NUT 0.63-11 HH NYLOC	2
16	0399	CAP SCR 0.63-11X2.00 HHGR5	2
17	C0538	NUT 0.75-10 HHGR8 NYLOC	1
18	18712	CAP SCR 0.75-10X7.50 HHGR8 ZY	1
19	18714	PIN WLDMT LATCHING PC RED ET-5391	1
20	18715	STOP EXT EC2K	1
21	0340	WASHER 0.25 FLAT	2
22	13573	CAP SCR 0.38-16X1.00 HHGR8	2
23	0479	CAP SCR 0.25-20X0.75 HHGR5	4
24	101889	WINCH 1200 EC2000	1
25	C6353	WASHER 0.38 FLAT GR8	2
26	0346	WASHER 0.38 FLAT	1
27	0351	CAP SCR 0.38-16X1.00 HHGR5	1
28	33940	WIRE ROPE 3/16 7X19 IWRC-XIP 50 FT	1
29	5753	PIN 0.19X1.56 LYNCH	1
30	18778	PIN HITCH 0.75X6.25 W\ LANYARD	1
31	18777	PIN HITCH 0.63X4.00 W\ LANYARD	1
32	7623	CLAMP 1.00 RUBBER	1
33	0521	WASHER 0.25 LOCK	3
34	C6018	HOOK CRANE-3 TON	1
35	0487	CAP SCR 0.31-18X1.75 HHGR5	1
36	19374	SPACER BOOM TIP EC2K PC BLACK	1
37	0342	NUT 0.31-18 HH NYLOC	1
REV. F			

# Short Mast Crane Assembly - PN 19146



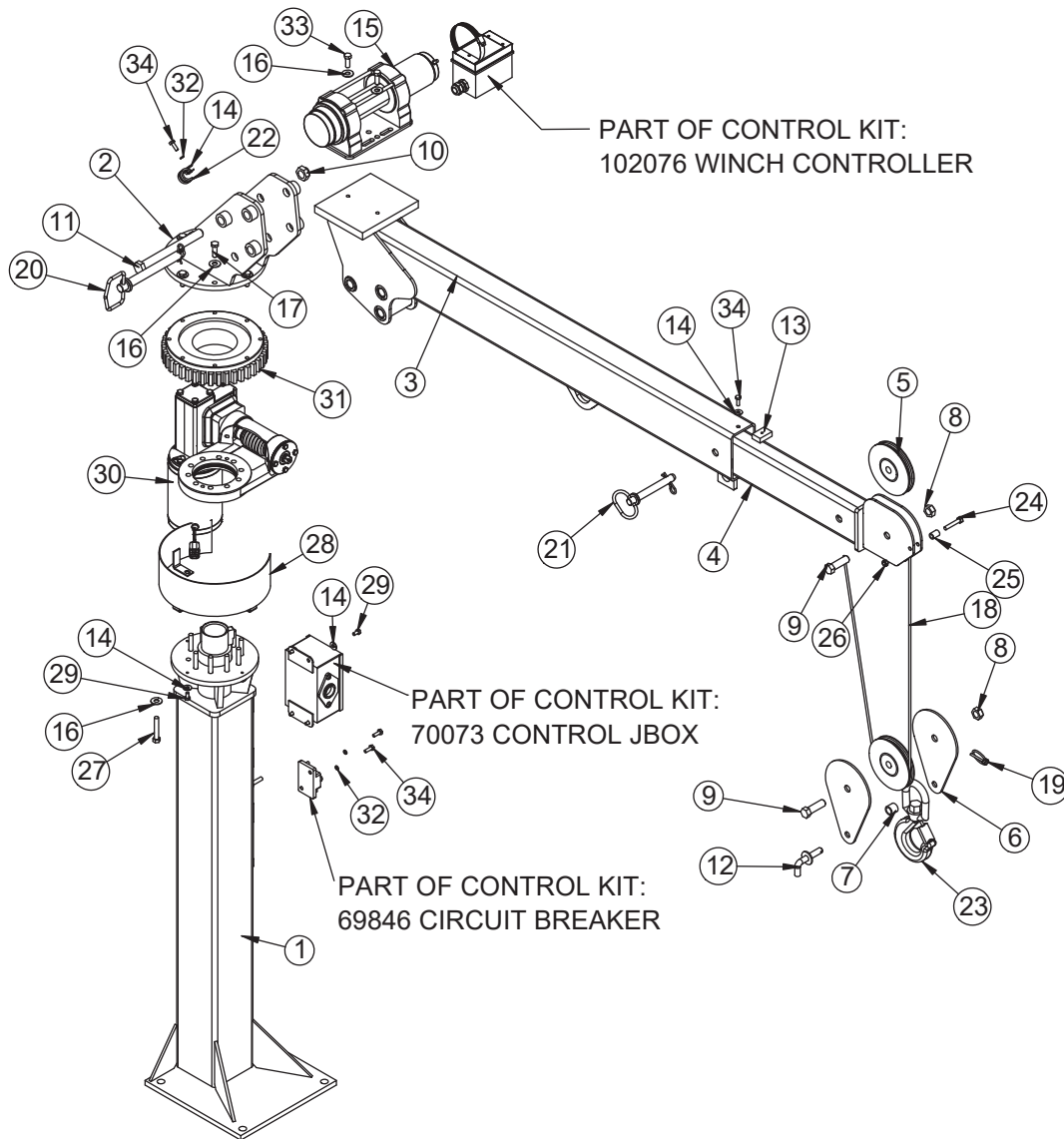
## ITEMS NOT SHOWN - 19146

PART	DESCRIPTION	QTY
111837	CONTROL KIT EC2000 MAN ROT	1
18776	DECAL KIT EC2000	1
19177	INST KIT EC2000	1
76334	MANUAL KIT	1
90037	MANUAL CRANE EC2000	1
19375	BOX SHIPPING EC2K	1
61506	PALLET EC2K SHIPPING	1
63572	CONTAINER 5 GAL BUCKET	1
63573	CONTAINER 5 GAL BUCKET LID	1

# Short Mast Crane Assembly - PN 19146 Parts List

PN 19146			
ITEM	PART	DESCRIPTION	QTY
1	39703	BASE EC2K SHORT PC WHITE	1
2	17600	MAST EC2K PC WHITE	1
3	39691	MAIN BOOM EC2000 PC WHITE	1
4	39690	EXT BOOM EC2K PC WHITE	1
5	18069	BEARING RADIAL BALL 6" BRB6217-2RS	1
6	18068	RACE INNER 2.50" TORIR-4016	1
7	18067	BEARING DRAWN CUP NEEDLE 2.75" TORB-4416	1
8	18475	BRAKE WELDMENT EC2K PC WHITE	1
9	18483	HANDLE WELDMENT EC2K PC WHITE	1
10	18485	HANDLE GRIP EC2K	1
11	17222	SHEAVE EC2K 5.00 DIA .19R/.75 THK	2
12	18711	PIPE 0.75 SCH40X1.44	1
13	17965	PLATE EC2K SNATCH BLOCK PC RED ET-5391	2
14	18036	SPACER SNATCH BLOCK EC2K PC RED	1
15	2826	NUT 0.63-11 HH NYLOC	2
16	0399	CAP SCR 0.63-11X2.00 HHGR5	2
17	C0538	NUT 0.75-10 HHGR8 NYLOC	1
18	18712	CAP SCR 0.75-10X7.50 HHGR8 ZY	1
19	18714	PIN WLDMT LATCHING PC RED ET-5391	1
20	18715	STOP EXT EC2K	1
21	0340	WASHER 0.25 FLAT	2
22	0479	CAP SCR 0.25-20X0.75 HHGR5	4
23	101889	WINCH 1200 EC2000	1
24	C6353	WASHER 0.38 FLAT GR8	2
25	0346	WASHER 0.38 FLAT	1
26	0351	CAP SCR 0.38-16X1.00 HHGR5	1
27	18773	WIRE ROPE 3/16 7X19 GAC 40FT W/1 TON HOOK	1
28	5753	PIN 0.19X1.56 LYNCH	1
29	18778	PIN HITCH 0.75X6.25 W\ LANYARD	1
30	18777	PIN HITCH 0.63X4.00 W\ LANYARD	1
31	0487	CAP SCR 0.31-18X1.75 HHGR5	1
32	0342	NUT 0.31-18 HH NYLOC	1
33	19374	SPACER BOOM TIP EC2K PC BLACK	1
34	C6018	HOOK CRANE-3 TON	1
35	7623	CLAMP 1.00 RUBBER	1
36	0521	WASHER 0.25 LOCK	3
37	13573	CAP SCR 0.38-16X1.00 HHGR8	2
REV. G			

# Power Rotation Crane Assembly - PN 22601



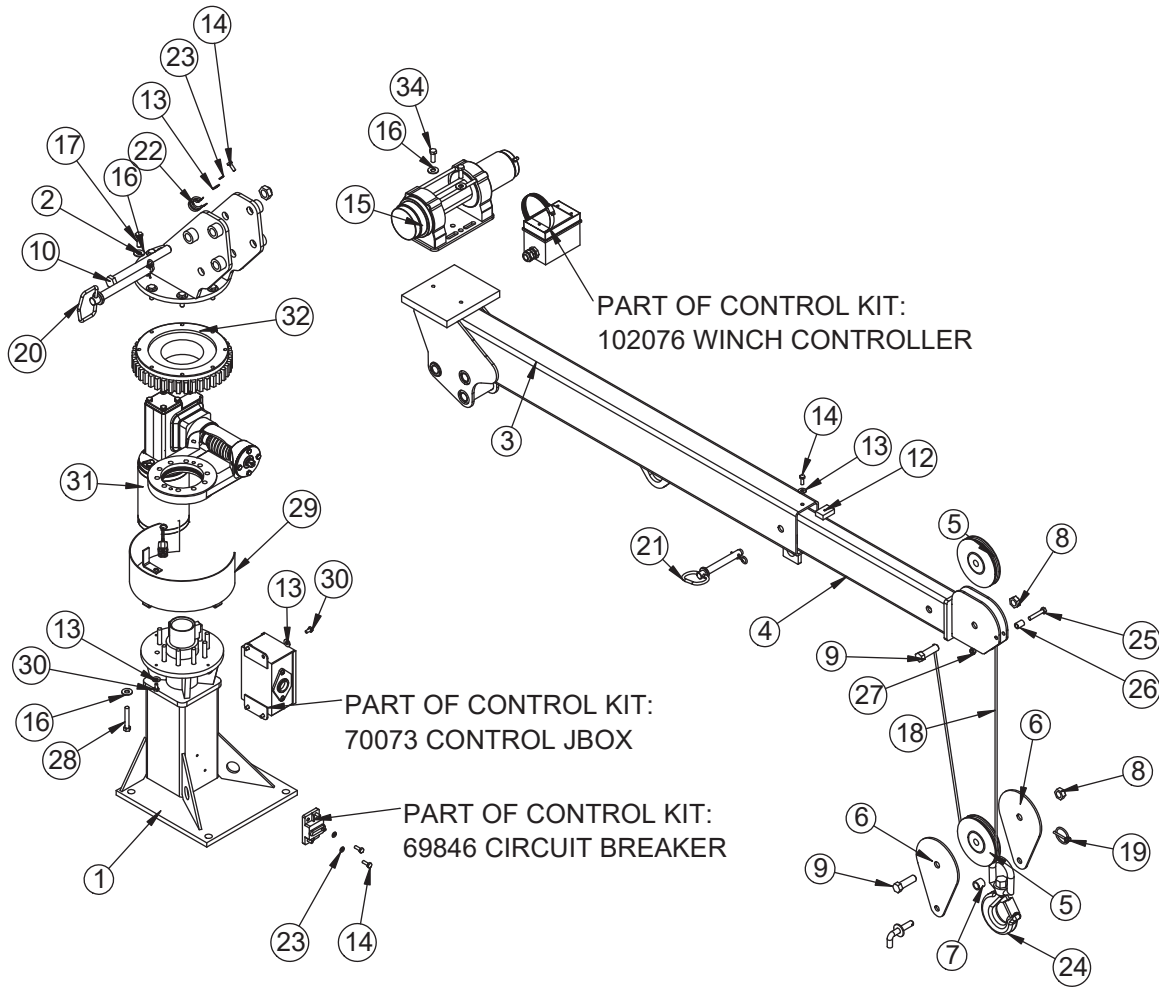
## ITEMS NOT SHOWN - 22601

PART	DESCRIPTION	QTY
70117	70117 CONTROL KIT EC2K PWR ROT	1
18776	DECAL KIT EC2000	1
19177	INST KIT EC2000	1
76334	MANUAL KIT	1
90037	MANUAL CRANE EC2000	1
19375	BOX SHIPPING EC2K	1
61506	PALLET EC2K SHIPPING	1
63572	CONTAINER 5 GAL BUCKET	1
63573	CONTAINER 5 GAL BUCKET LID	1

# Power Rotation Crane Assembly - PN 22601 Parts List

PN 22601			
ITEM	PART	DESCRIPTION	QTY
1	39688	BASE EC2K POWER PC WHITE	1
2	22608	MAST EC2K POWER PC WHITE	1
3	39691	MAIN BOOM EC2000 PC WHITE	1
4	39690	EXT BOOM EC2K PC WHITE	1
5	17222	SHEAVE EC2K 5.00 DIA .19R/.75 THK	2
6	17965	PLATE EC2K SNATCH BLOCK PC RED ET-5391	2
7	18036	SPACER SNATCH BLOCK EC2K PC RED	1
8	2826	NUT 0.63-11 HH NYLOC	2
9	0399	CAP SCR 0.63-11X2.00 HHGR5	2
10	C0538	NUT 0.75-10 HHGR8 NYLOC	1
11	18712	CAP SCR 0.75-10X7.50 HHGR8 ZY	1
12	18714	PIN WLDMT LATCHING PC RED ET-5391	1
13	18715	STOP EXT EC2K	1
14	0340	WASHER 0.25 FLAT	9
15	101889	WINCH 1200 EC2000	1
16	C6353	WASHER 0.38 FLAT GR8	20
17	13576	CAP SCR 0.38-16X1.25 HHGR8	8
18	18773	WIRE ROPE 3/16 7X19 GAC 40FT W/1 TON HOOK	1
19	5753	PIN 0.19X1.56 LYNCH	1
20	18778	PIN HITCH 0.75X6.25 W\ LANYARD	1
21	18777	PIN HITCH 0.63X4.00 W\ LANYARD	1
22	7623	CLAMP 1.00 RUBBER	1
23	C6018	HOOK CRANE-3 TON	1
24	0487	CAP SCR 0.31-18X1.75 HHGR5	1
25	19374	SPACER BOOM TIP EC2K PC BLACK	1
26	0342	NUT 0.31-18 HH NYLOC	1
27	22924	CAP SCR 0.38-16X2.25 HHGR8	10
28	22616	GUARD TTB EC2K PC WHITE	1
29	0478	CAP SCR 0.25-20X0.50 HHGR5	7
30	79699	BEARING HOUSING EC2000 V2	1
31	22613	BEARING GEAR SY7B0101N-10-B	1
32	0521	WASHER 0.25 LOCK	3
33	13573	CAP SCR 0.38-16X1.00 HHGR8	2
34	0479	CAP SCR 0.25-20X0.75 HHGR5	4
REV. J			

# Power Rotation Short Mast Crane Assembly - PN 24906



## ITEMS NOT SHOWN - 24906

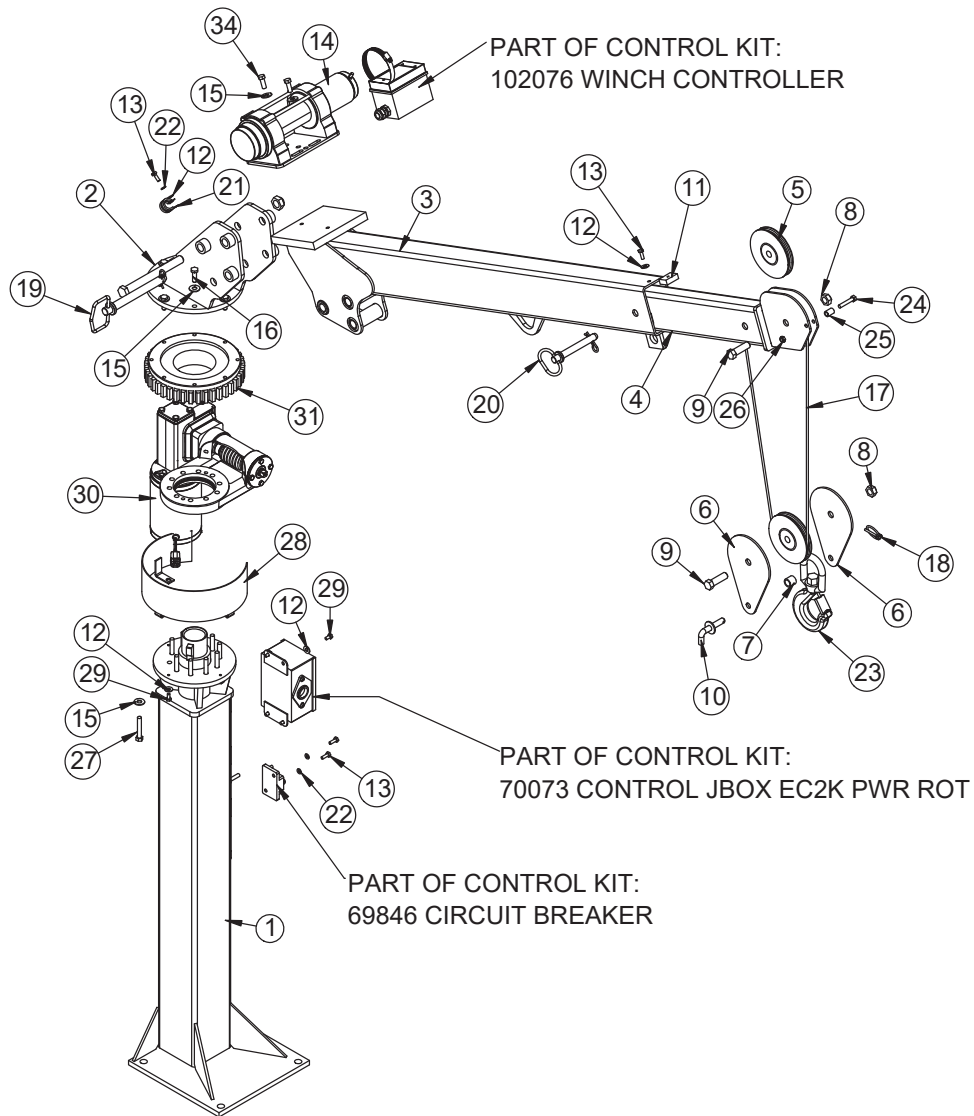
PART	DESCRIPTION	QTY
70117	70117 CONTROL KIT EC2K PWR ROT	1
18776	DECAL KIT EC2000	1
19177	INST KIT EC2000	1
76334	MANUAL KIT	1
90037	MANUAL CRANE EC2000	1
19375	BOX SHIPPING EC2K	1
61506	PALLET EC2K SHIPPING	1
63572	CONTAINER 5 GAL BUCKET	1
63573	CONTAINER 5 GAL BUCKET LID	1



# Power Rotation Short Mast Crane Asm - PN 24906 Parts

PN 24906			
ITEM	PART	DESCRIPTION	QTY
1	39696	BASE EC2K POWER SHORT PC WHITE	1
2	22608	MAST EC2K POWER PC WHITE	1
3	39691	MAIN BOOM EC2000 PC WHITE	1
4	39690	EXT BOOM EC2K PC WHITE	1
5	17222	SHEAVE EC2K 5.00 DIA .19R/.75 THK	2
6	17965	PLATE EC2K SNATCH BLOCK PC RED ET-5391	2
7	18036	SPACER SNATCH BLOCK EC2K PC RED	1
8	2826	NUT 0.63-11 HH NYLOC	2
9	0399	CAP SCR 0.63-11X2.00 HHGR5	2
10	18712	CAP SCR 0.75-10X7.50 HHGR8 ZY	1
11	18714	PIN WLDMT LATCHING PC RED ET-5391	1
12	18715	STOP EXT EC2K	1
13	0340	WASHER 0.25 FLAT	9
14	0479	CAP SCR 0.25-20X0.75 HHGR5	4
15	101889	WINCH 1200 EC2000	1
16	C6353	WASHER 0.38 FLAT GR8	20
17	13576	CAP SCR 0.38-16X1.25 HHGR8	8
18	18773	WIRE ROPE 3/16 7X19 GAC 40FT W/1 TON HOOK	1
19	5753	PIN 0.19X1.56 LYNCH	1
20	18778	PIN HITCH 0.75X6.25 W\ LANYARD	1
21	18777	PIN HITCH 0.63X4.00 W\ LANYARD	1
22	7623	CLAMP 1.00 RUBBER	1
23	0521	WASHER 0.25 LOCK	3
24	C6018	HOOK CRANE-3 TON	1
25	0487	CAP SCR 0.31-18X1.75 HHGR5	1
26	19374	SPACER BOOM TIP EC2K PC BLACK	1
27	0342	NUT 0.31-18 HH NYLOC	1
28	22924	CAP SCR 0.38-16X2.25 HHGR8	10
29	22616	GUARD TTB EC2K PC WHITE	1
30	0478	CAP SCR 0.25-20X0.50 HHGR5	7
31	79699	BEARING HOUSING EC2000 V2	1
32	22613	BEARING GEAR SY7B0101N-10-B	1
33	C0538	NUT 0.75-10 HHGR8 NYLOC	1
34	13573	CAP SCR 0.38-16X1.00 HHGR8	2
REV. I			

# LH Mount Crane Assembly - PN 56658



## ITEMS NOT SHOWN - 56658

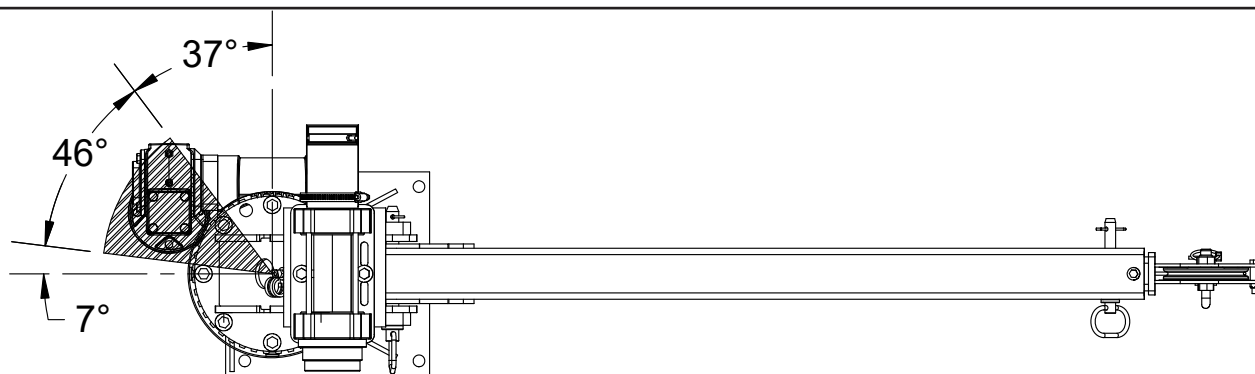
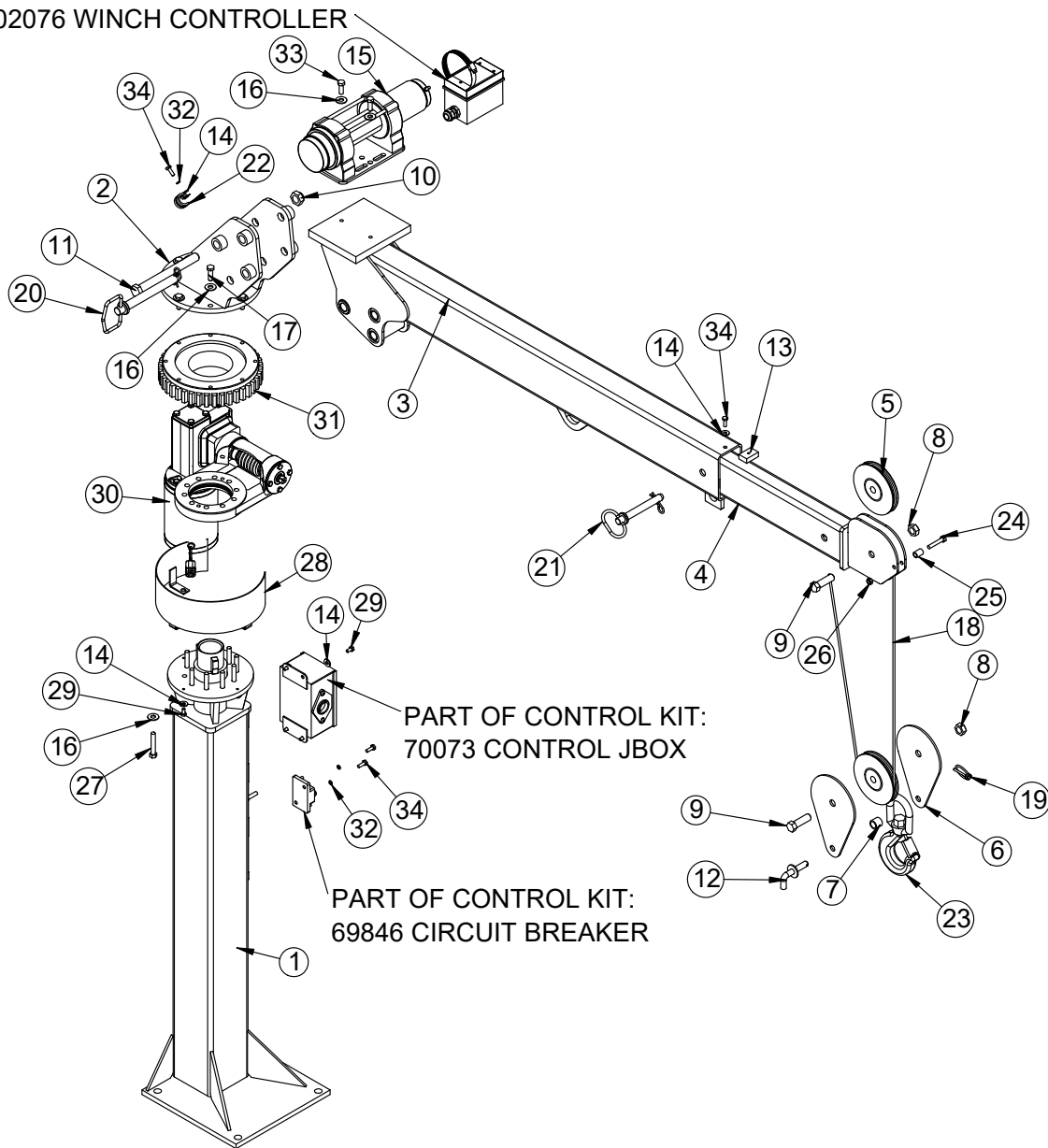
PART	DESCRIPTION	QTY
70117	70117 CONTROL KIT EC2K PWR ROT	1
18776	DECAL KIT EC2000	1
19177	INST KIT EC2000	1
76334	MANUAL KIT	1
90037	MANUAL CRANE EC2000	1
19375	BOX SHIPPING EC2K	1
61506	PALLET EC2K SHIPPING	1

# LH Mount Crane Assembly - PN 56658 Parts List

PN 56658			
ITEM	PART	DESCRIPTION	QTY
1	56659	BASE EC2K POWER LH MNT	1
2	22608	MAST EC2K POWER PC WHITE	1
3	39691	MAIN BOOM EC2000 PC WHITE	1
4	39690	EXT BOOM EC2K PC WHITE	1
5	17222	SHEAVE EC2K 5.00 DIA .19R/.75 THK	2
6	17965	PLATE EC2K SNATCH BLOCK PC RED ET-5391	2
7	18036	SPACER SNATCH BLOCK EC2K PC RED	1
8	2826	NUT 0.63-11 HH NYLOC	2
9	0399	CAP SCR 0.63-11X2.00 HHGR5	2
10	18714	PIN WLDMT LATCHING PC RED ET-5391	1
11	18715	STOP EXT EC2K	1
12	0340	WASHER 0.25 FLAT	9
13	0479	CAP SCR 0.25-20X0.75 HHGR5	4
14	101889	WINCH 1200 EC2000	1
15	C6353	WASHER 0.38 FLAT GR8	20
16	13576	CAP SCR 0.38-16X1.25 HHGR8	8
17	18773	WIRE ROPE 3/16 7X19 GAC 40FT W/1 TON HOOK	1
18	5753	PIN 0.19X1.56 LYNCH	1
19	18778	PIN HITCH 0.75X6.25 W\ LANYARD	1
20	18777	PIN HITCH 0.63X4.00 W\ LANYARD	1
21	7623	CLAMP 1.00 RUBBER	1
22	0521	WASHER 0.25 LOCK	3
23	C6018	HOOK CRANE-3 TON	1
24	0487	CAP SCR 0.31-18X1.75 HHGR5	1
25	19374	SPACER BOOM TIP EC2K PC BLACK	1
26	0342	NUT 0.31-18 HH NYLOC	1
27	22924	CAP SCR 0.38-16X2.25 HHGR8	10
28	22616	GUARD TTB EC2K PC WHITE	1
29	0478	CAP SCR 0.25-20X0.50 HHGR5	7
30	79699	BEARING HOUSING EC2000 V2	1
31	22613	BEARING GEAR SY7B0101N-10-B	1
32	C0538	NUT 0.75-10 HHGR8 NYLOC	1
33	18712	CAP SCR 0.75-10X7.50 HHGR8 ZY	1
34	13573	CAP SCR 0.38-16X1.00 HHGR8	2
REV. G			

# Crane EC2000 Power Special Stop - PN 134347

PART OF CONTROL KIT:  
102076 WINCH CONTROLLER



SPECIAL STOP POSITION  
POWER ROTATION

# Crane EC2000 Power Special Stop - PN 134347 Parts

## PN 134347

ITEM	PART	DESCRIPTION	QTY
1	134348	BASE EC2K POWER SPECIAL STOP	1
2	22608	MAST EC2K POWER PC WHITE	1
3	39691	MAIN BOOM EC2000 PC WHITE	1
4	39690	EXT BOOM EC2K PC WHITE	1
5	17222	SHEAVE EC2K 5.00 DIA .19R/.75 THK	2
6	17965	PLATE EC2K SNATCH BLOCK PC RED ET-5391	2
7	18036	SPACER SNATCH BLOCK EC2K PC RED	1
8	2826	NUT 0.63-11 HH NYLOC	2
9	0399	CAP SCR 0.63-11X2.00 HHGR5	2
10	C0538	NUT 0.75-10 HHGR8 NYLOC	1
11	18712	CAP SCR 0.75-10X7.50 HHGR8 ZY	1
12	18714	PIN WLDMT LATCHING PC RED ET-5391	1
13	18715	STOP EXT EC2K	1
14	0340	WASHER 0.25 FLAT	9
15	101889	WINCH 1200 EC2000	1
16	C6353	WASHER 0.38 FLAT GR8	20
17	13576	CAP SCR 0.38-16X1.25 HHGR8	8
18	18773	WIRE ROPE 3/16 7X19 GAC 40FT W/1 TON HOOK	1
19	5753	PIN 0.19X1.56 LYNCH	1
20	18778	PIN HITCH 0.75X6.25 W\ LANYARD	1
21	18777	PIN HITCH 0.63X4.00 W\ LANYARD	1
22	7623	CLAMP 1.00 RUBBER	1
23	C6018	HOOK CRANE-3 TON	1
24	0487	CAP SCR 0.31-18X1.75 HHGR5	1
25	19374	SPACER BOOM TIP EC2K PC BLACK	1
26	0342	NUT 0.31-18 HH NYLOC	1
27	22924	CAP SCR 0.38-16X2.25 HHGR8	10
28	22616	GUARD TTB EC2K PC WHITE	1
29	0478	CAP SCR 0.25-20X0.50 HHGR5	7
30	79699	BEARING HOUSING EC2000 V2	1
31	22613	BEARING GEAR SY7B0101N-10-B	1
32	0521	WASHER 0.25 LOCK	3
33	13573	CAP SCR 0.38-16X1.00 HHGR8	2
34	0479	CAP SCR 0.25-20X0.75 HHGR5	4

### ITEMS NOT SHOWN

70117	CONTROL KIT EC2K PWR ROT	1
18776	DECAL KIT EC2000	1
19177	INST KIT EC2000	1
76334	MANUAL KIT	1
90037	MANUAL CRANE EC2000	1
19375	BOX SHIPPING EC2K	1
61506	PALLET EC2K SHIPPING	1
63572	CONTAINER 5 GAL BUCKET	1
63573	CONTAINER 5 GAL BUCKET LID	1





Subject to Change without Notification.  
© 2024 Stellar Industries, Inc.